

7. SPARE PARTS

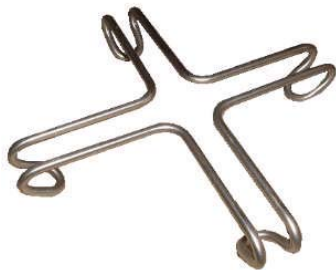
PART NO	DESCRIPTION
<u>Open Burners</u>	
004573	Burner Front
004574	Burner Rear
004078	Burner Cap
037210	Injector Nat Gas 2.10mm
037130	Injector LPG 1.30mm
018680	Gas Control (Std Only)
017801	Gas Control (-FFP Only)
018788	Gas Control (-P Only)
013000K	Pilot Burner Kit (-P and -FFP Only)
011651	Pilot Orifice Nat Gas .018" (-P and -FFP Only)
011650	Pilot Orifice LPG .010" (-P and -FFP Only)
013848	Thermocouple - Front (-FFP Only)
017617 + 013154	Thermocouple - Rear + Split Nut (-FFP Only)
019371	Pressure Test Point
<u>Griddle</u>	
014105	Burner
032210	Injector Nat Gas 2.10mm
032130	Injector LPG 1.30mm
017801	Gas Control
019215K	Pilot Burner Kit
018693	Pilot Orifice Nat Gas 0.32mm
018692	Pilot Orifice LPG 0.20mm
019428	Thermocouple
020119	Piezo Ignitor
018095	Piezo H.T Lead
018744	Piezo Ignition Electrode
016385	Griddle 300mm
<u>Oven</u>	
018694	Oven Burner
018691K	Oven Pilot Kit
018744	Ignition Electrode
018682	Oven Thermocouple
032235	Oven Burner Injector Nat Gas - Oven 2.35mm
032145	Oven Burner Injector LPG - Oven 1.45mm
018692	Pilot Orifice LPG - 0.20mm
018693	Pilot Orifice Nat Gas - 0.32mm
228703	Eurosit Gas Control / Thermostat Kit (From S/N 126758)
022194	Low Fire screw 1.1mm - Nat Gas (Eurosit - from S/N 126758)
022193	Low Fire screw 0.7mm - LPG (Eurosit - from S/N 126758)
021792	Pintossi 25ST Oven Gas Control Kit (Up to S/N 126757)
018684	Low Fire screw 0.75mm - Nat Gas (Pintossi - to S/N 126757)
021788	Low Fire screw 0.45mm - LPG (Pintossi 25ST - to S/N 126757)
020119	Piezo Ignitor
018095	Piezo H.T Lead
018375	Flame Baffle
004563	Oven Tray
024352	Oven Door Seal (Side) (From S/N 218641)
024039	Oven Door Seal (Top) (From S/N 218641)
019157	Oven Seal Assembly - One Piece (To S/N 218640)

General

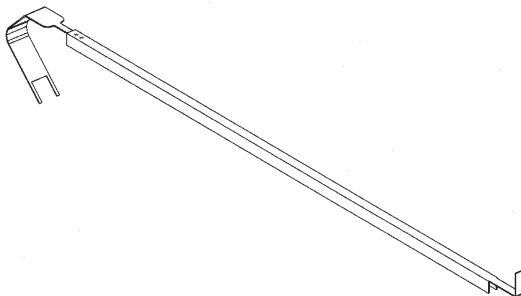
004125	Pot Stand / Trivet
016659	Pot Stand Spider
004158	Hob Spillage Tray
013202	Knob - Open Burner / Griddle
011853	Regulator ¾" - (Natural Gas only)
011005	Ball Catch Assembly
018131	Handle
018081	Handle End Cap
018797	Door Bush
018804	Door Catch Top
018805	Door Catch Bottom
018675	Side Rack LH
018676	Side Rack RH
018677	Oven Rack
018723	Leg Mounting Plate (Adjustable Leg)
014872	Leg Assy 6" (Adjustable)
015139	Castor Assy
004634	Foot Plate
022196	Instruction Book

8. ACCESSORIES

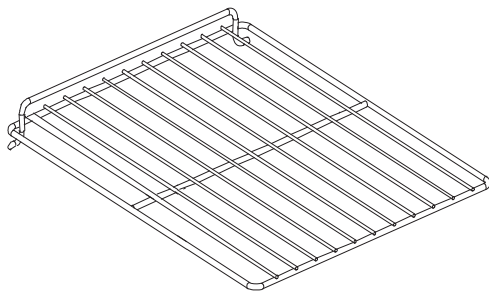
POT STAND SPIDER (PART NO 016659)



JOINING STRIP (PART NO 13068 + 13071)

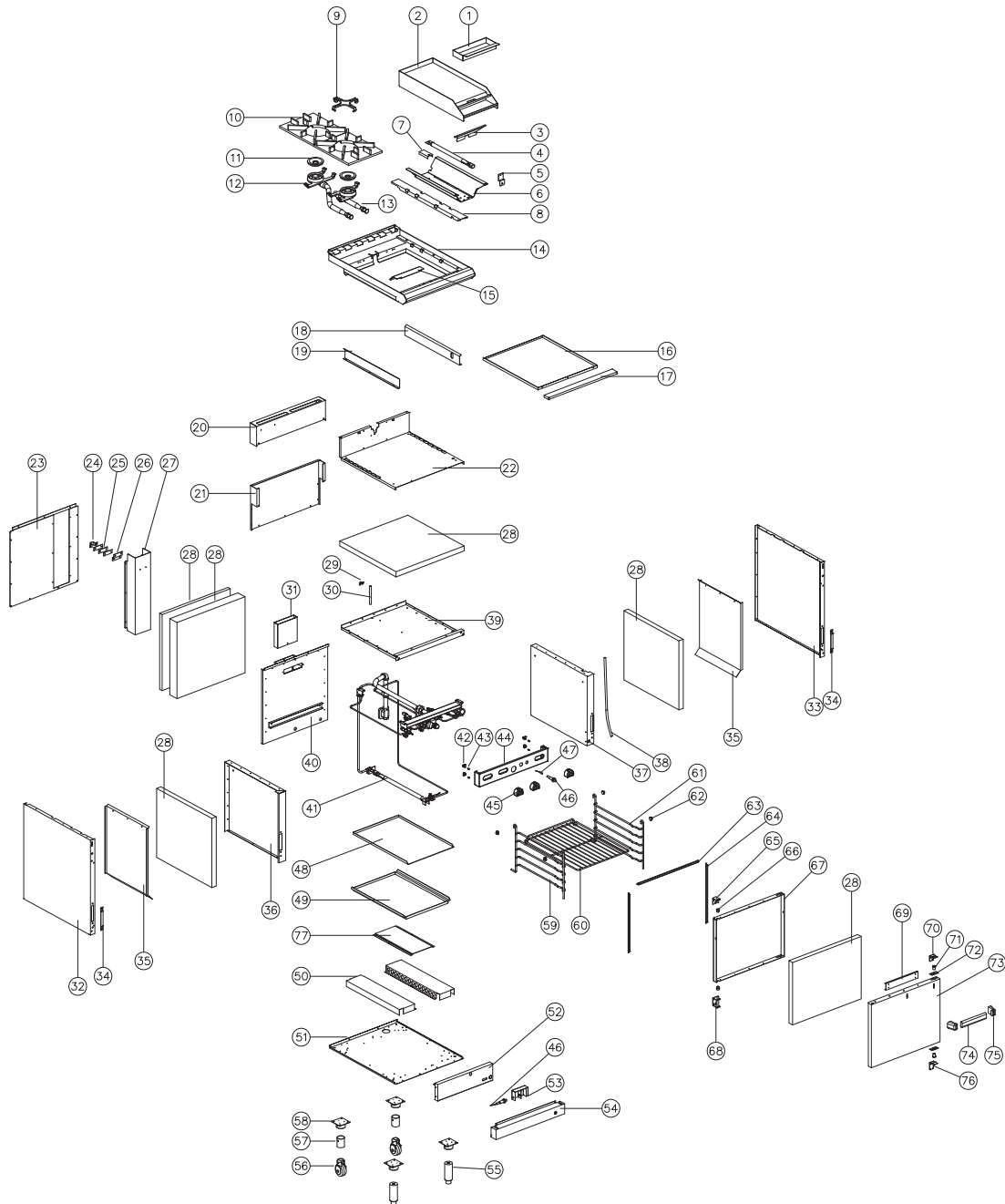


OVEN RACK (PART NO 18677)



9. PARTS DIAGRAM

9.1 MAIN ASSEMBLY



Pos	Part No	Description
1	016511	TROUGH TRAY
2	016385	GRIDDLE ('C' OPTION)
3	019424	HEAT SHIELD
4	014105	GRIDDLE BURNER
5	018781	INJECTOR SUPPORT BRACKET
6	019431	GRIDDLE REFLECTOR
7	014106	GRIDDLE BURNER BRACKET
8	018713	POT SUPPORT
9	016659	POT STAND SPIDER
10	004125	POT STAND
11	004078	BURNER CAP
12	004574	REAR BURNER
13	004573	FRONT BURNER
14	018377	HOB
15	017609	HEAT SHIELD (-FFP ONLY)
16	004571	DRIP TRAY
17	018697	DRIP TRAY FRONT
18	018753	HOB TRAY GUIDE - R.H
19	018752	HOB TRAY GUIDE - L.H
20	012860	SPLASHBACK
21	018393	HOB BACK PANEL
22	018380	HOB BASE PANEL
23	018396	BACK PANEL
24	010023	SADDLE CLAMP
25	011842	PIPE SPACER
26	018714	GAS ENTRY BRACKET
27	018715	GAS HOUSING
28	-----	INSULATION
29	018690	SADDLE CLAMP
30	018678	THERMOSTAT TUBE
31	018669	FLUE
32	018387	SIDE PANEL - L.H
33	018388	SIDE PANEL - R.H
34	018806	BLANKING PLATE
35	018754	SIDE INSULATION PANEL
36	004556	OVEN SIDE - L.H
37	004557	OVEN SIDE - R.H
38	018679	THERMOCOUPLE TUBE
39	004560	OVEN TOP
40	004559	OVEN BACK
41	-----	GAS CONTROL ASSEMBLY (SEE SECTION 6.2 & 6.3)
42	018717	SPRING LATCH - CLIP
43	018718	SPRING LATCH - STUD
44	004814	CONTROL PANEL G50-4C
	004813	CONTROL PANEL G50-4D
	004815	CONTROL PANEL G50-4C LH
	004817	CONTROL PANEL G50-4C FFP
	004816	CONTROL PANEL G50-4D FFP
	004818	CONTROL PANEL G50-4C LH FFP
45	013202	KNOB ASSEMBLY
	018812	OVEN KNOB ASSEMBLY (PRE S/N 126757 ONLY)
46	020119	PIEZO IGNITOR
47	018095	H.T LEAD
48	004563	OVEN TRAY
49	018375	FLAME BAFFLE
50	004561	DRAUGHT BOX
51	018360	BASE PANEL
52	004558	OVEN FRONT

53	025360	PIEZO MOUNTING BRACKET
	025361	PIEZO HEAT SHIELD
	SA1662	PIEZO MOUNTING BRACKET AND HEAT SHIELD ASSEMBLY
54	018803	BOTTOM LINTEL
55	014872	LEG ASSEMBLY - C/W FOOT
	010990	ADJUSTABLE FOOT
56	012776	CASTOR ASSEMBLY
57	013661	LEG TUBE
	015139	CASTOR LEG ASSEMBLY (56 & 57 ASSEMBLED)
58	004634	LEG MOUNTING PLATE
59	018675	SIDE RACK - L.H
60	018677	OVEN RACK
61	018676	SIDE RACK - R.H
62	018716	HANGER STUD
63	024039	DOOR TOP SEAL (FROM S/N 218641)
64	024352	DOOR SIDE SEAL (FROM S/N 218641)
	019157	OVEN SEAL ASSEMBLY – ONE PIECE (TO S/N 218640)
	018033	SEAL RETAINING CLIP (TO S/N 218640)
65	018809	TOP PIVOT W.A
66	018797	DOOR BUSH
67	004584	DOOR INNER
68	018810	BOTTOM PIVOT W.A
69	018138	HANDLE STIFFENER
70	018804	DOOR CATCH - TOP
71	011005	BALL CATCH & NUT
72	018789	BALL CATCH PLATE
73	018800	DOOR OUTER LH
	018801	DOOR OUTER RH (OPTIONAL ALTERNATIVE)
74	018131	DOOR HANDLE
75	018081	HANDLE END CAP
76	018805	DOOR CATCH – BOTTOM
77	024024	RADIATION PANEL

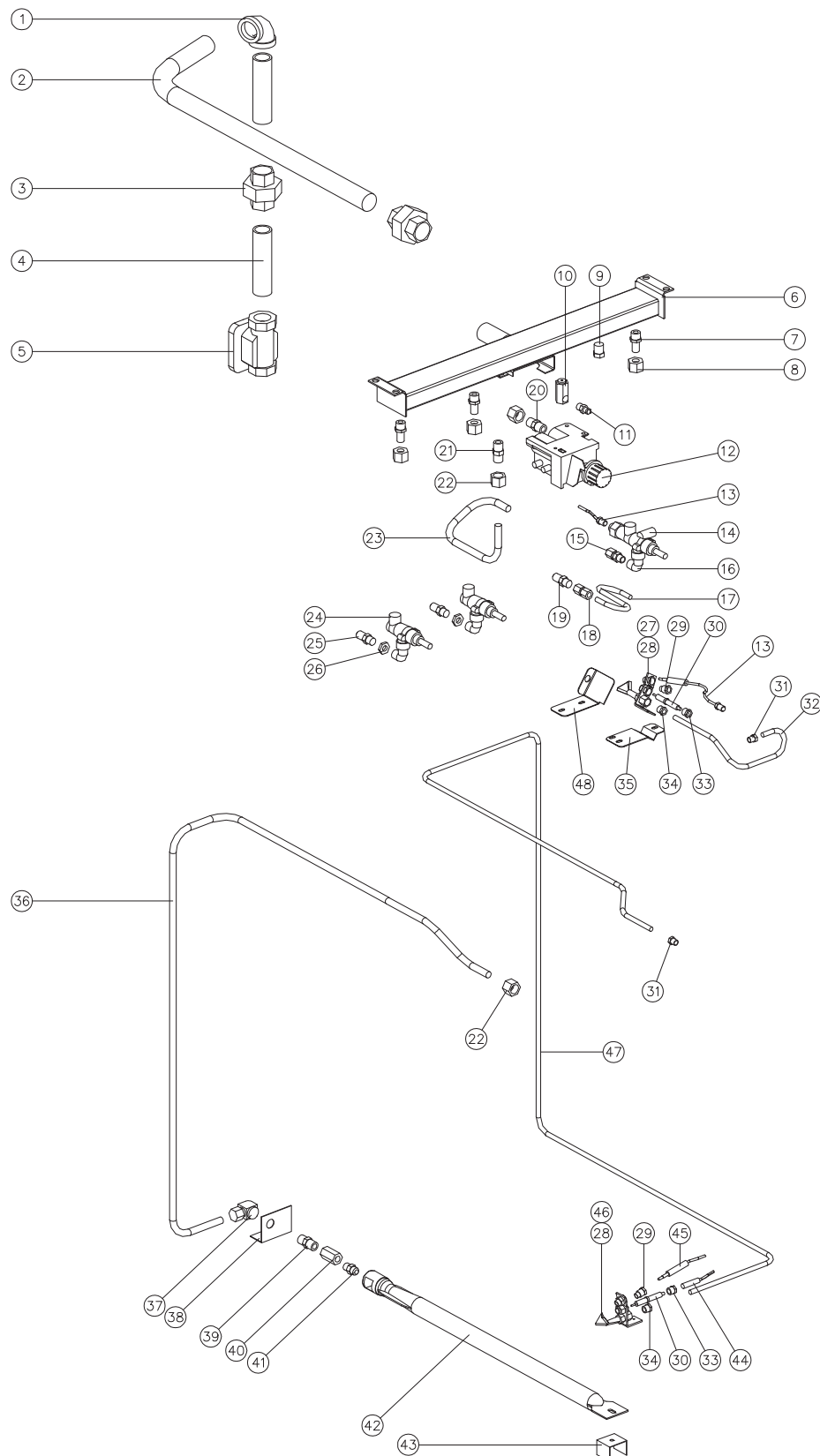
HOB TYPE CONVERSION KITS

022200	G50-4 C -> D
022201	G50-4 D -> CLH
022202	G50-4 D -> C

GAS TYPE CONVERSION KITS

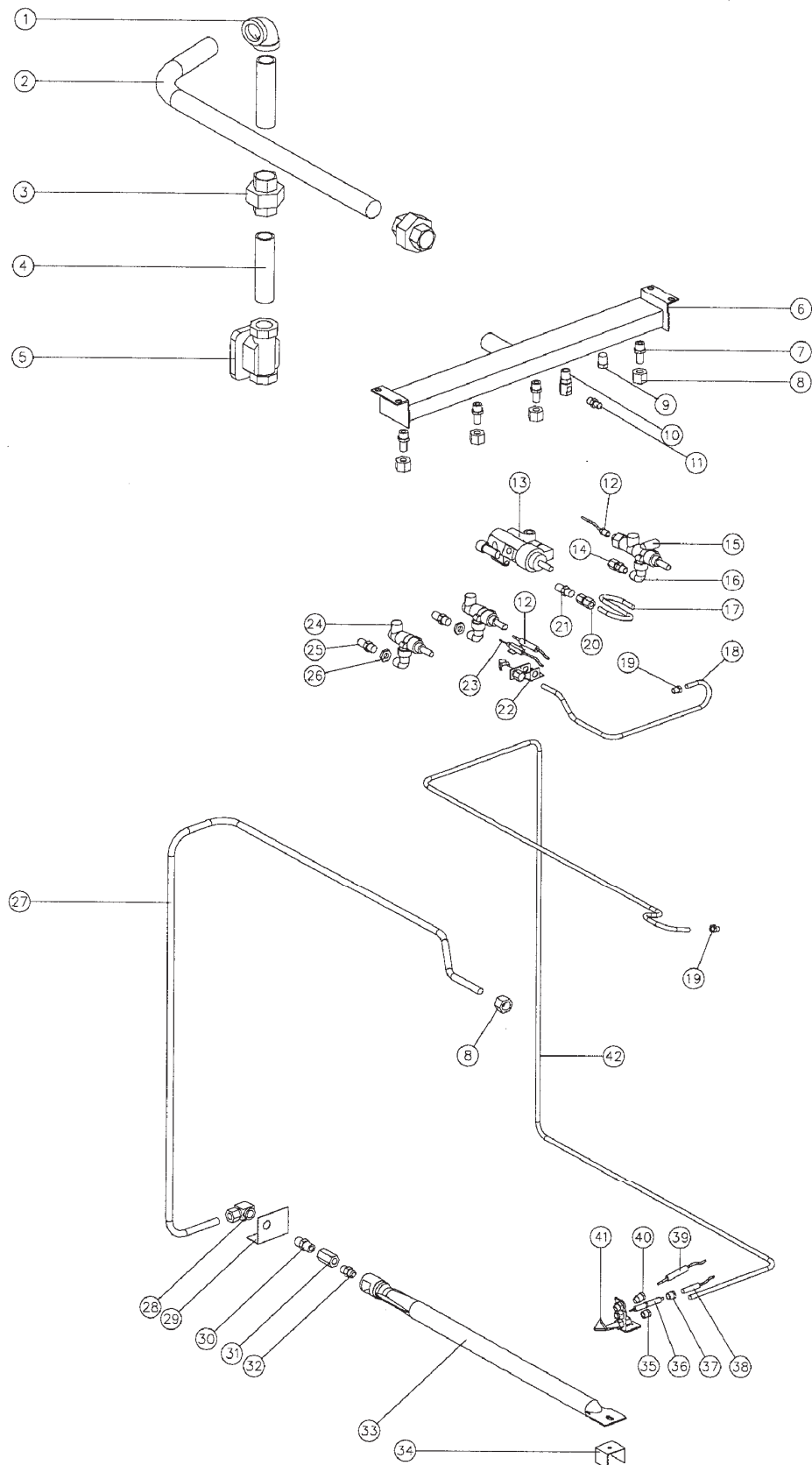
Model	Serial Numbers		Country	Conversion Kit		
	From	To		→ LPG	→ Butane	→ Natural
G50-4 B	←	126757		19422	On request	19419
G50-4 C	126758	→	Australia only	22217	Use NZ LPG kit	22219
			NZ / Other countries	26241		
	←	126757		19421	On request	19418
G50-4 D	126758	→	Australia only	22216	Use NZ LPG kit	22218
			NZ / Other countries	26240		
	←	126757		19420	On request	19417
G52-4 B	←	126757		19416	On request	19031
G52-4 C	126758	→	Australia only	22221	Use NZ LPG kit	22235
			NZ / Other countries	26243		
	←	126757		19415	On request	19030
G52-4 D	126758	→	Australia only	22220	Use NZ LPG kit	22234
			NZ / Other countries	26242		
	←	126757		19414	On request	19029

9.2.1 GAS PIPING ASSEMBLY - STD (FROM S/N 126757)



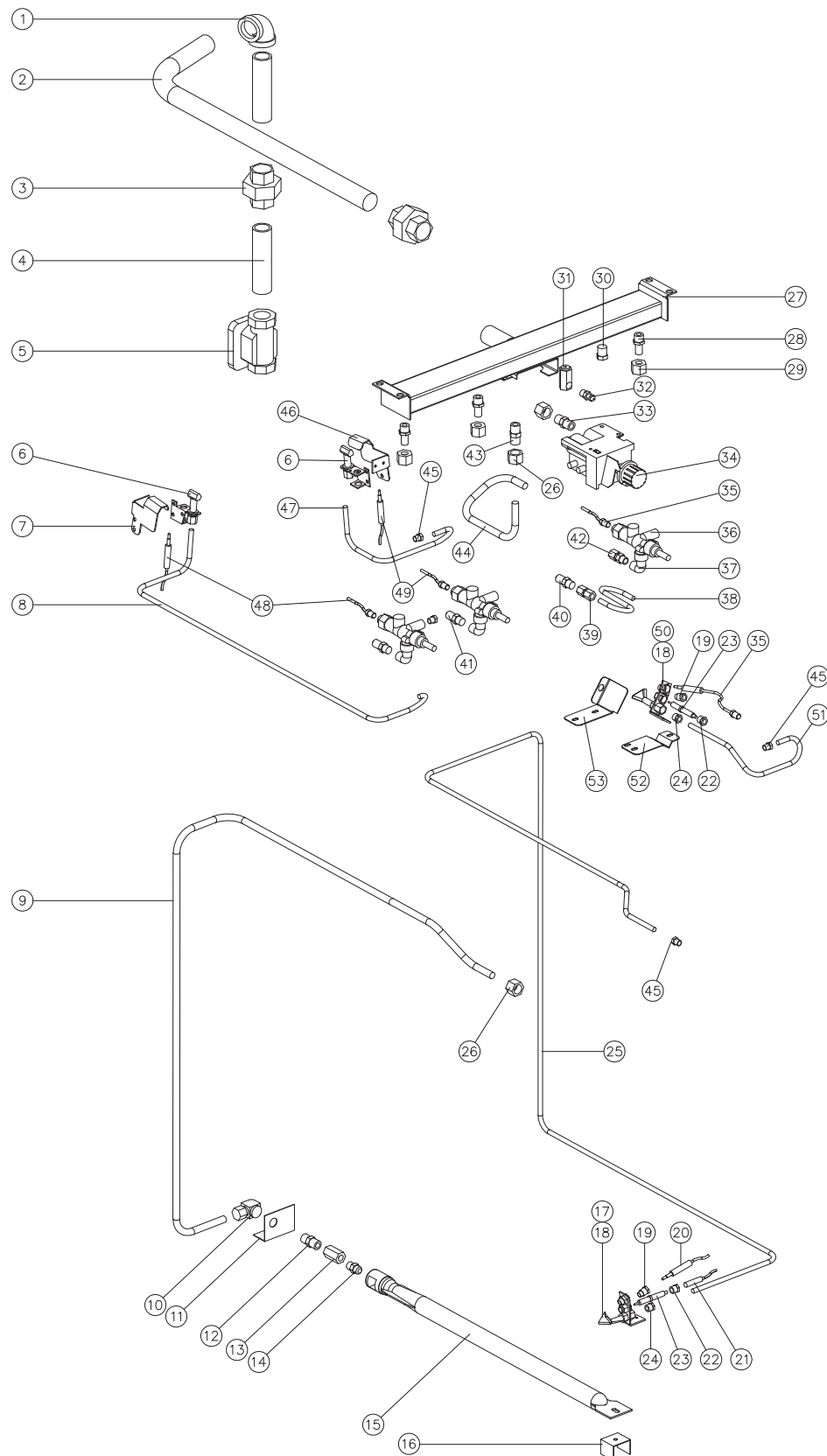
Pos	Part No	Description
1	011830	ELBOW - 3/4" BSP
2	018722	SUPPLY PIPE
3	011827	MAC UNION - 3/4" BSP
4	011835	NIPPLE - 4"
5	011853	REGULATOR (NATURAL GAS ONLY)
6	004819	MANIFOLD
7	017802	INLET SPIGOT
8	017804	SPIGOT NUT
	017803	SPIGOT OLIVE (NOT ILLUSTRATED)
9	011148	PLUG - 1/4"
10	011741	PRESSURE ADAPTOR
11	019371	PRESSURE TEST POINT
12	228703	GAS CONTROL KIT - OVEN
	022193	BYPASS SCREW Ø0.70mm LPG
	022194	BYPASS SCREW Ø1.10mm NATURAL GAS
13	019428	THERMOCOUPLE - 320mm
15	012753	CONNECTOR
14	017801	GAS CONTROL (GRIDDLE ONLY) (ASSEMBLED WITH ITEM 16)
16	018359	ELBOW - 1/8" x 1/4" (PART OF ITEM 15 & 24)
17	018784	INJECTOR SUPPLY TUBE
18	011742	CONNECTOR
19	032130	GRIDDLE INJECTOR Ø1.30mm - LPG
	032210	GRIDDLE INJECTOR Ø2.10mm - NATURAL GAS
20	021288	CONNECTOR 3/8" BSP x 3/8" COMPRESSION
21	022172	CONNECTOR 1/4" BSP x 3/8" COMPRESSION
22	018097	NUT & OLIVE
23	022171	CONTROL SUPPLY TUBE
24	018680	GAS CONTROL (OPEN BURNERS ONLY)(ASSEMBLED WITH ITEM 16)
25	037130	OPEN BURNER INJECTOR Ø1.30mm - LPG
	037210	OPEN BURNER INJECTOR Ø2.10mm - NATURAL GAS
26	011740	JET BACKNUT (UP TO S/N 246144)
27	019215K	GRIDDLE PILOT KIT (ASSEMBLED WITH ITEMS 28,29,30,33,34)
28	018692	PILOT INJECTOR - LPG
	018693	PILOT INJECTOR - NATURAL GAS
29	018741	CLAMP NUT
30	018744	IGNITOR ELECTRODE
31	011286	OLIVE 1/4"
	011287	NUT - 1/4" COMPRESSION
32	019432	GRIDDLE PILOT TUBE - R.H
	019801	GRIDDLE PILOT TUBE - L.H (NOT ILLUSTRATED)
33	018742	ELECTRODE NUT
34	018739	PILOT OLIVE (NOT ILLUSTRATED)
	018740	PILOT NUT
35	019425	GRIDDLE PILOT BRACKET
36	022170	OVEN SUPPLY PIPE
37	015155	ELBOW - 1/4" BSP x 3/8"
38	018734	INJECTOR BRACKET
39	017815	HEX NIPPLE - 1/4" BRASS
40	012918	OUTLET CONNECTOR
41	032145	OVEN INJECTOR Ø1.45 mm - LPG
	032235	OVEN INJECTOR Ø2.35 mm - NATURAL GAS
42	018694	OVEN BURNER
43	018735	BURNER SUPPORT BRACKET
44	018095	H.T LEAD - OVEN
45	018682	THERMOCOUPLE
46	018691K	OVEN PILOT BURNER KIT (ASSEMBLED WITH ITEMS 28,29,30,33,34)
47	022169	PILOT SUPPLY TUBE
48	023863	GRIDDLE PILOT DRAFT BAFFLE (FROM S/N 215176)

9.2.2 GAS PIPING ASSEMBLY - STD (TO S/N 126756)



Pos	Part No	Description
1	011830	ELBOW - 3/4" BSP
2	018722	SUPPLY PIPE
3	011827	MAC UNION - 3/4" BSP
4	011835	NIPPLE - 4"
5	011853	REGULATOR (NATURAL GAS ONLY)
6	004564	MANIFOLD
7	017802	INLET SPIGOT
8	017804	SPIGOT NUT
	017803	SPIGOT OLIVE (NOT ILLUSTRATED)
9	011148	PLUG - 1/4"
10	011741	PRESSURE ADAPTOR
11	019371	PRESSURE TEST POINT
12	013848	THERMOCOUPLE
13	021792	OVEN GAS CONTROL KIT 25ST
	018812	KNOB ASSY – OVEN (NOT ILLUSTRATED)
	021788	BYPASS SCREW Ø0.45mm LPG
	018684	BYPASS SCREW Ø0.75mm NATURAL GAS
	023987	EUROSIT UPGRADE KIT
14	012753	CONNECTOR
15	017801	GAS CONTROL (GRIDDLE ONLY) (ASSEMBLED WITH ITEM 16)
16	018359	ELBOW - 1/8" x 1/4" (ASSEMBLED WITH ITEM 15 & 24)
17	018784	INJECTOR SUPPLY TUBE
18	018785	GRIDDLE PILOT TUBE - R.H
	019801	GRIDDLE PILOT TUBE - L.H (NOT ILLUSTRATED)
19	017805	PILOT NUT
	017806	PILOT OLIVE (NOT ILLUSTRATED)
20	011742	CONNECTOR
21	032130	GRIDDLE INJECTOR Ø1.30mm - LPG
	032210	GRIDDLE INJECTOR Ø2.10mm - NATURAL GAS
22	012699K	PILOT BURNER KIT
	011650	PILOT INJECTOR - LPG
	011651	PILOT INJECTOR - NATURAL GAS
23	013801	IGNITOR ELECTRODE
24	018680	GAS CONTROL (OPEN BURNERS ONLY) (ASSEMBLED WITH ITEM 16)
25	034130	OPEN BURNER INJECTOR Ø1.30mm - LPG
	034210	OPEN BURNER INJECTOR Ø2.10mm - NATURAL GAS
26	011740	JET BACKNUT
27	018719	OVEN SUPPLY PIPE
28	015155	ELBOW - 1/4" BSP X 3/8"
29	018734	INJECTOR BRACKET
30	017815	HEX NIPPLE - 1/4" BRASS
31	012918	OUTLET CONNECTOR
32	032145	OVEN INJECTOR Ø1.45 mm - LPG
	032235	OVEN INJECTOR Ø2.35 mm - NATURAL GAS
33	018694	OVEN BURNER
34	018735	BURNER SUPPORT BRACKET
35	018740	NUT 1/4" (INCLUDED AS PART OF ITEM 41)
	018739	OLIVE (NOT ILLUSTRATED)(INCLUDED AS PART OF ITEM 41)
36	018744	PILOT ELECTRODE (INCLUDED AS PART OF ITEM 41)
37	018742	ELECTRODE NUT (INCLUDED AS PART OF ITEM 41)
38	018095	H.T LEAD - OVEN
39	018682	THERMOCOUPLE
40	018741	CLAMP NUT (INCLUDED AS PART OF ITEM 41)
41	018691K	OVEN PILOT BURNER KIT (INCLUDES ITEMS 35,36,37,40)
	018692	PILOT INJECTOR Ø0.20mm - LPG
	018693	PILOT INJECTOR Ø0.32mm - NATURAL GAS
42	018674	PILOT SUPPLY TUBE

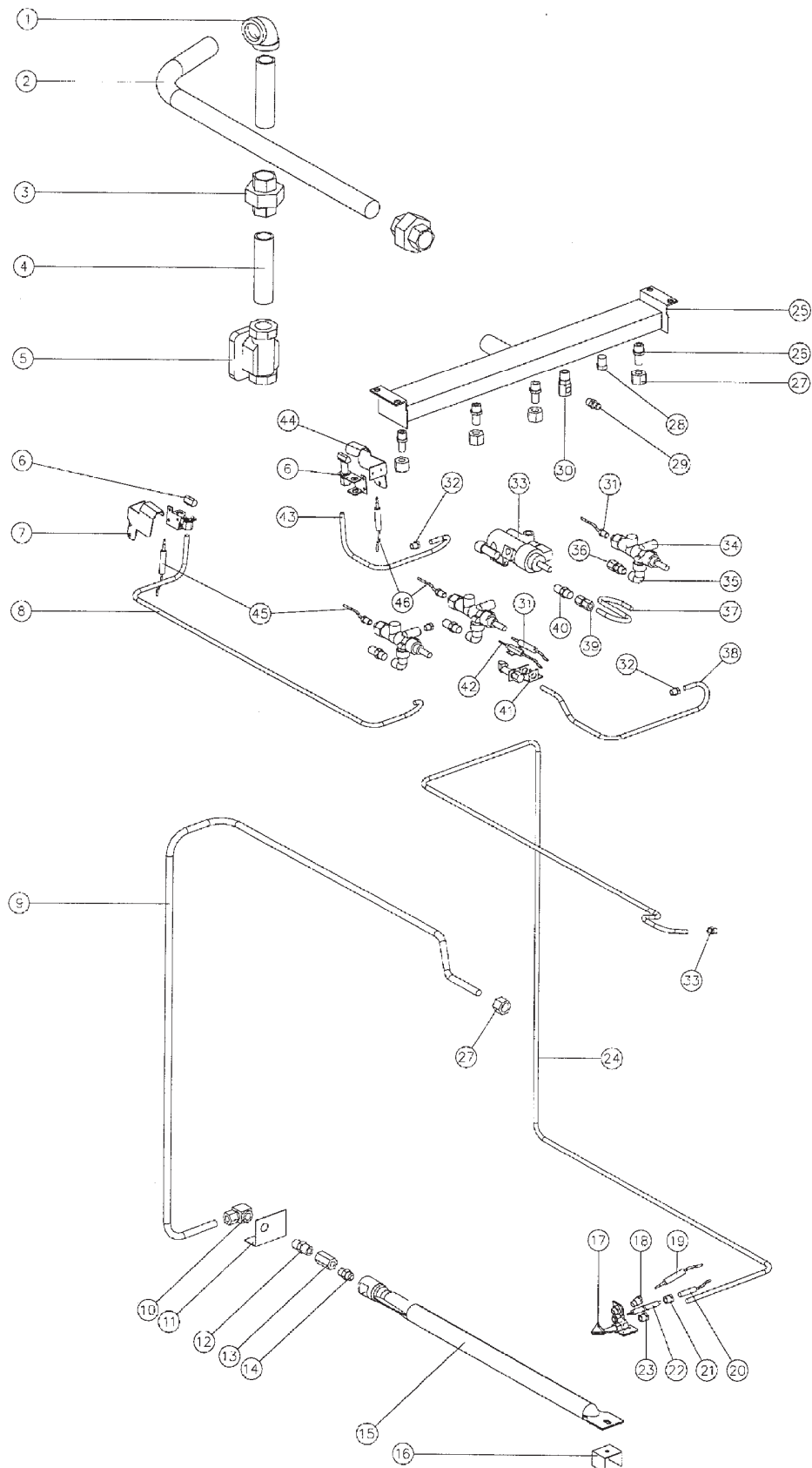
9.3.1 GAS PIPING ASSEMBLY - FFP (FROM S/N 126757)



Pos	Part No	Description
1	011830	ELBOW - 3/4" BSP
2	018722	SUPPLY PIPE
3	011827	MAC UNION - 3/4" BSP
4	011835	NIPPLE - 4"
5	011853	REGULATOR (NATURAL GAS ONLY)
6	013000K	PILOT BURNER KIT
	011650	PILOT INJECTOR - LPG
	011651	PILOT INJECTOR - NATURAL GAS
7	017608	PILOT SHROUD - REAR
8	018782	PILOT TUBE - REAR
9	022170	OVEN SUPPLY PIPE
10	015155	ELBOW - 1/4" BSP x 3/8"
11	018734	INJECTOR BRACKET
12	017815	HEX NIPPLE - 1/4" BRASS
13	012918	OUTLET CONNECTOR
14	032145	OVEN INJECTOR Ø1.45 mm - LPG
	032235	OVEN INJECTOR Ø2.35 mm - NATURAL GAS
15	018694	OVEN BURNER
16	018735	BURNER SUPPORT BRACKET
17	018691K	OVEN PILOT BURNER KIT (INCLUDES ITEMS 18,19,22,23,24)
18	018692	PILOT INJECTOR Ø0.20mm - LPG
		(INCLUDED AS PART OF ITEMS 17,50)
	018693	PILOT INJECTOR Ø0.32mm - NATURAL GAS
		(INCLUDED AS PART OF ITEMS 17,50)
19	018741	CLAMP NUT (INCLUDED AS PART OF ITEMS 17,50)
20	018682	THERMOCOUPLE
21	018095	H.T LEAD - OVEN
22	018742	ELECTRODE NUT (INCLUDED AS PART OF ITEMS 17,50)
23	018744	PILOT ELECTRODE (INCLUDED AS PART OF ITEMS 17,50)
	018740	NUT 1/4" (INCLUDED AS PART OF ITEMS 17,50)
24	018739	OLIVE (NOT ILLUSTRATED)(INCLUDED AS PART OF ITEMS 17,50)
25	022169	PILOT SUPPLY TUBE
26	018097	NUT & OLIVE
27	004819	MANIFOLD
28	017802	INLET SPIGOT
29	017804	SPIGOT NUT
	017803	SPIGOT OLIVE (NOT ILLUSTRATED)
30	011148	PLUG - 1/4"
31	019371	PRESSURE TEST POINT
32	011741	PRESSURE ADAPTOR
33	021288	CONNECTOR 3/8" BSP x 3/8" COMPRESSION
34	228703	OVEN GAS CONTROL KIT
35	019428	THERMOCOUPLE
36	017801	GAS CONTROL
	018788	GAS CONTROL (-P MODELS ONLY) (NOT ILLUSTRATED)
37	018359	ELBOW
38	018784	INJECTOR SUPPLY TUBE
39	011742	CONNECTOR
40	032130	GRIDDLE INJECTOR Ø1.30mm - LPG
	032210	GRIDDLE INJECTOR Ø2.10mm - NATURAL GAS
41	037130	OPEN BURNER INJECTOR Ø1.30 - LPG
	037210	OPEN BURNER INJECTOR Ø2.10 - NATURAL GAS
42	012753	CONNECTOR
43	021288	CONNECTOR 3/8" BSP x 3/8" COMPRESSION
44	022171	CONTROL SUPPLY TUBE
45	017805	PILOT NUT
	017806	PILOT OLIVE (NOT ILLUSTRATED)

46	017607	PILOT SHROUD - FRONT
47	018783	PILOT TUBE - FRONT
48	017617	THERMOCOUPLE - REAR
	024573	THERMOCOUPLE LOCK-NUT (NOT ILLUSTRATED)
49	013848	THERMOCOUPLE - FRONT
	024573	THERMOCOUPLE LOCK-NUT (NOT ILLUSTRATED)
50	019215K	GRIDDLE PILOT BURNER KIT (INCLUDES ITEMS 18,19,22,23,24)
51	019432	GRIDDLE PILOT TUBE - R.H
	019801	GRIDDLE PILOT TUBE - L.H (NOT ILLUSTRATED)
52	019425	GRIDDLE PILOT BRACKET
53	023863	GRIDDLE PILOT DRAFT BAFFLE (FROM S/N 215176)

9.3.2 GAS PIPING ASSEMBLY - FFP (TO S/N 126756)



Pos	Part No	Description
1	011830	ELBOW - 3/4" BSP
2	018722	SUPPLY PIPE
3	011827	MAC UNION - 3/4" BSP
4	011835	NIPPLE - 4"
5	011853	REGULATOR (NATURAL GAS ONLY)
6	013000K	PILOT BURNER KIT
	011650	PILOT INJECTOR - LPG
	011651	PILOT INJECTOR - NATURAL GAS
7	017608	PILOT SHROUD - REAR
8	018782	PILOT TUBE - REAR
9	018719	OVEN SUPPLY PIPE
10	015155	ELBOW - 1/4" BSP x 3/8"
11	018734	INJECTOR BRACKET
12	017815	HEX NIPPLE - 1/4" BRASS
13	012918	OUTLET CONNECTOR
14	032150	OVEN INJECTOR Ø1.50 mm - LPG
	032230	OVEN INJECTOR Ø2.30 mm - NATURAL GAS
15	018694	OVEN BURNER
16	018735	BURNER SUPPORT BRACKET
17	018691K	OVEN PILOT BURNER KIT (INCLUDES ITEMS 18,21,22,23)
	018692	PILOT INJECTOR Ø0.20mm - LPG
	018693	PILOT INJECTOR Ø0.32mm - NATURAL GAS
18	018741	CLAMP NUT (INCLUDED AS PART OF ITEM 17)
19	018682	THERMOCOUPLE
20	018095	H.T LEAD - OVEN
21	018742	ELECTRODE NUT (INCLUDED AS PART OF ITEM 17)
22	018744	PILOT ELECTRODE (INCLUDED AS PART OF ITEM 17)
23	018740	NUT 1/4" (INCLUDED AS PART OF ITEM 17)
	018739	OLIVE (NOT ILLUSTRATED) (INCLUDED AS PART OF ITEM 17)
24	018674	PILOT SUPPLY TUBE
25	004564	MANIFOLD
26	017802	INLET SPIGOT
27	017804	SPIGOT NUT
	017803	SPIGOT OLIVE (NOT ILLUSTRATED)
28	011148	PLUG - 1/4"
29	019371	PRESSURE TEST POINT
30	011741	PRESSURE ADAPTOR
31	013848	THERMOCOUPLE
32	017805	PILOT NUT
	017806	PILOT OLIVE (NOT ILLUSTRATED)
33	021792	OVEN GAS CONTROL KIT 25ST
	018812	KNOB ASSEMBLY – OVEN (NOT ILLUSTRATED)
	018685	BYPASS SCREW Ø0.45mm LPG
	018684	BYPASS SCREW Ø0.75mm NATURAL GAS
	023987	EUROSIT UPRGRADE KIT
34	017801	GAS CONTROL (-FFP, GRIDDLE ONLY) (ASSEMBLED WITH ITEM 35)
	018788	GAS CONTROL (-P MODELS ONLY) (NOT ILLUSTRATED)
35	018359	ELBOW (PART OF ITEM 34)
36	012753	CONNECTOR
37	018784	INJECTOR SUPPLY TUBE
38	018785	GRIDDLE PILOT TUBE - R.H
	019801	GRIDDLE PILOT TUBE - L.H (NOT ILLUSTRATED)
39	011742	CONNECTOR
40	034130	OPEN BURNER INJECTOR Ø1.30 - LPG
	034210	OPEN BURNER INJECTOR Ø2.10 - NATURAL GAS
	032130	GRIDDLE INJECTOR Ø1.30 - LPG
	032210	GRIDDLE INJECTOR Ø2.10 - NATURAL GAS

41	012699K	GRIDDLE PILOT BURNER KIT
	011650	PILOT INJECTOR - LPG
	011651	PILOT INJECTOR - NATURAL GAS
42	013801	IGNITOR ELECTRODE
43	018783	PILOT TUBE - FRONT
44	017607	PILOT SHROUD - FRONT
45	017617	THERMOCOUPLE - REAR
	024573	THERMOCOUPLE LOCK-NUT (NOT ILLUSTRATED)
46	013848	THERMOCOUPLE - FRONT
	024573	THERMOCOUPLE LOCK-NUT (NOT ILLUSTRATED)