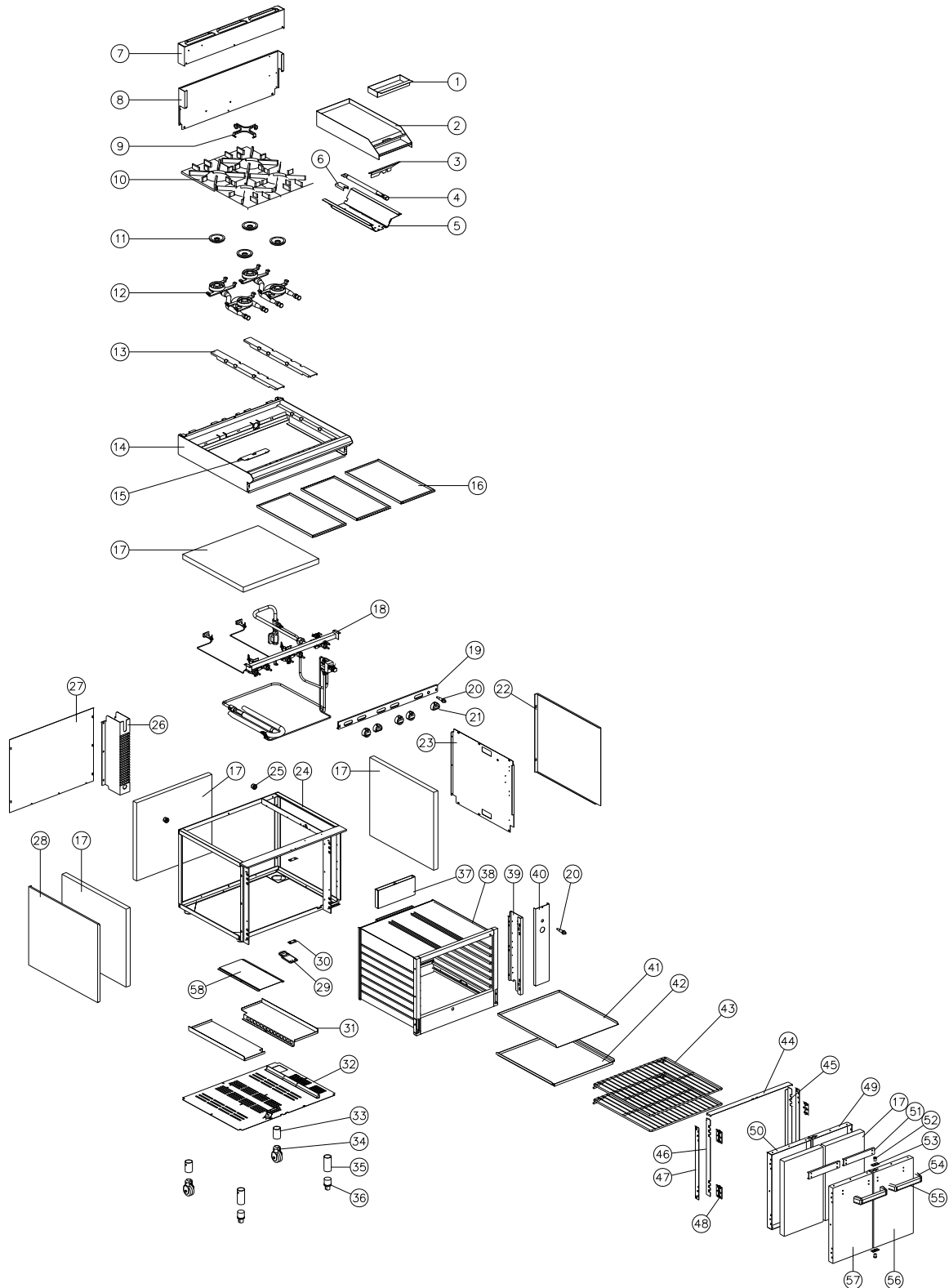


9. PARTS DIAGRAMS

9.1 MAIN ASSEMBLY



Pos	Part No	Description
1	016511	TROUGH TRAY
2	016387	GRIDDLE ('A' OPTION)
	016386	GRIDDLE ('B' OPTION)
	016385	GRIDDLE ('C' OPTION)
3	019424	HEAT SHIELD
4	014105	GRIDDLE BURNER
5	019431	GRIDDLE REFLECTOR
6	014106	GRIDDLE BURNER BRACKET
7	012862	SPLASHBACK G50
	012863	SPLASHBACK G50-8
	004656	BLUE SEAL BADGE (NOT SHOWN)
8	012849	HOB BACK PANEL
9	016659	POT STAND SPIDER
10	004125	POT STAND
11	004078	BURNER CAP
12	004079	FRONT BURNER ASSEMBLY
	004080	REAR BURNER ASSEMBLY
13	015439	POT SUPPORT
14	012856	HOB - G50
	012858	HOB - G50-8
15	017609	HEAT SHIELD (-FFP UNITS ONLY)
16	004158	HOB TRAY
17	-----	INSULATION
18	014932	GAS PIPING ASSEMBLY (SEE SECTION 9.2 & 9.3)
19	004407	HOB CONTROL PANEL G50A (to S/N 125326)
	004683	HOB CONTROL PANEL G50A (from S/N 125327)
	004408	HOB CONTROL PANEL G50B (to S/N 125326)
	004684	HOB CONTROL PANEL G50B (from S/N 125327)
	004409	HOB CONTROL PANEL G50C (to S/N 125326)
	004685	HOB CONTROL PANEL G50C (from S/N 125327)
	004410	HOB CONTROL PANEL G50D (to S/N 1253266)
	004686	HOB CONTROL PANEL G50D (from S/N 125327)
	004488	HOB CONTROL PANEL G50B -FFP
	004487	HOB CONTROL PANEL G50C -FFP
	004486	HOB CONTROL PANEL G50D -FFP
19	004411	HOB CONTROL PANEL G50-8A (to S/N 125326)
	004748	HOB CONTROL PANEL G50-8A (from S/N 125327)
	004412	HOB CONTROL PANEL G50-8B (to S/N 125326)
	004749	HOB CONTROL PANEL G50-8B (from S/N 125327)
	004413	HOB CONTROL PANEL G50-8C (to S/N 125326)
	004750	HOB CONTROL PANEL G50-8C (from S/N 125327)
	004414	HOB CONTROL PANEL G50-8D (to S/N 125326)
	004751	HOB CONTROL PANEL G50-8D (from S/N 125327)
	004492	HOB CONTROL PANEL G50-8A -FFP
	004491	HOB CONTROL PANEL G50-8B -FFP
	004492	HOB CONTROL PANEL G50-8C -FFP
	004489	HOB CONTROL PANEL G50-8D -FFP
19	004454	HOB CONTROL PANEL G50B LH (to S/N 125326)
	004753	HOB CONTROL PANEL G50B LH (from S/N 125327)
	004455	HOB CONTROL PANEL G50C LH (to S/N 125326)
	004754	HOB CONTROL PANEL G50C LH (from S/N 125327)
	004507	HOB CONTROL PANEL G50B -FFP LH
	004506	HOB CONTROL PANEL G50C -FFP LH
19	004456	HOB CONTROL PANEL G50-8B LH (to S/N 125326)
	004755	HOB CONTROL PANEL G50-8B LH (from S/N 125327)
	004457	HOB CONTROL PANEL G50-8C LH (to S/N 125326)
	004756	HOB CONTROL PANEL G50-8C LH (from S/N 125327)

	004509	HOB CONTROL PANEL G50-8B -FFP LH
	004508	HOB CONTROL PANEL G50-8C -FFP LH
20	020119	PIEZO IGNITOR
21	013202	KNOB ASSEMBLY
22	015045	SIDE PANEL - R.H
23	015042	SIDE INSULATION PANEL
24	004257	CHASSIS G50
	004258	CHASSIS G50-8
25	014157	SPACER FOOT
26	014798	GAS HOUSING
27	014804	BACK PANEL
28	013249	SIDE PANEL - LH
29	004338	STRIKER PLATE EXTENSION
30	010254	STRIKER PLATE
31	004157	DRAUGHT BOX
32	014927	BOTTOM INSULATION PANEL
33	013661	LEG TUBE - CASTOR
	015139	CASTOR LEG ASSEMBLY (33 & 34 ASSEMBLED)
34	012776	CASTOR ASSEMBLY
	015652	CASTOR YOKE
	011046	WHEEL - 75mm
	014854	WHEEL PIN
35	014873	LEG TUBE - ADJUSTABLE
	014872	ADJUSTABLE LEG ASSEMBLY (35 & 36 ASSEMBLED)
36	010990	ADJUSTABLE FOOT
37	012233	VENT
38	004259	OVEN
39	013247	SPACER PANEL
40	004612	OVEN CONTROL PANEL (FROM S/N 126757)
	004328	OVEN CONTROL PANEL (UP TO S/N 126756)
41	004156	OVEN TRAY
42	011186	FLAME BAFFLE
43	010377	OVEN RACK
44	014314	OVEN TRIM - TOP
45	014356	OVEN TRIM - R.H
46	014355	OVEN TRIM - L.H
47	013248	HINGE PLATE
48	016406	BUTT HINGE
49	004334	DOOR INNER - R.H
50	004333	DOOR INNER - L.H
51	018138	HANDLE STIFFENER
52	011005	BALL & LOCKNUT
53	018789	BALL CATCH PLATE
54	018081K	HANDLE END CAP
55	018131	DOOR HANDLE
56	013243	DOOR OUTER - R.H
	SA1435	RIGHT HAND DOOR ASSEMBLY (WITHOUT M/SWITCH PIN)
57	013244	DOOR OUTER - L.H
	SA1434	LEFT HAND DOOR ASSEMBLY
58	024023	RADIATION PANEL

HOB TYPE CONVERSIONS KITS

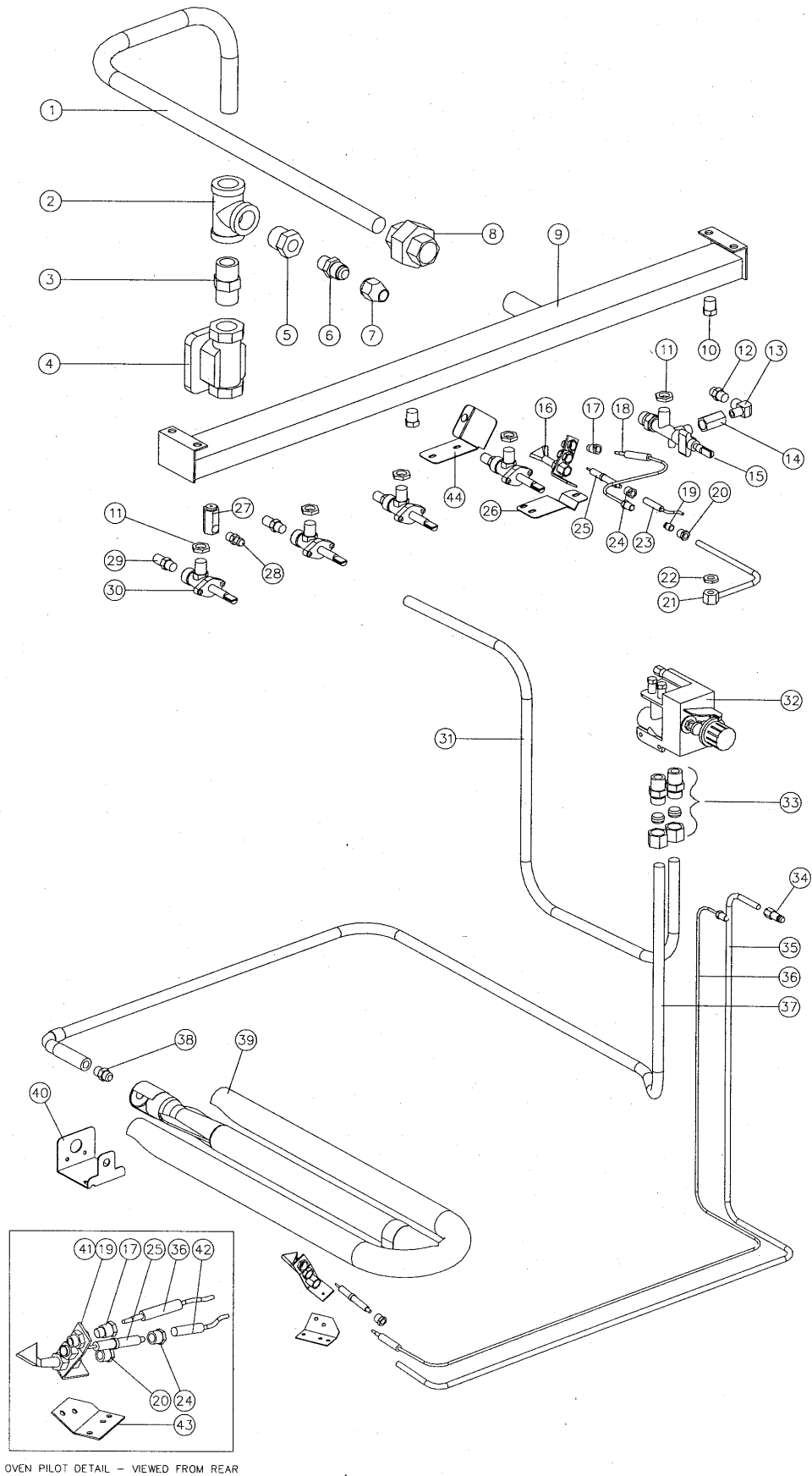
FROM:	A	B	C	D
TO A	-	022247	022246	022245
TO B	022244	-	022243	022242
TO C	022241	022240	-	022239
TO D	022238	022237	022236	-

GAS TYPE CONVERSION KITS

Model	Serial Numbers		Country	Conversion Kit		
	From	To		→ LPG	→ Butane	→ Natural
G50 A	119888	→	Australia only	22947 & 20146	Use NZ LPG kit	22960 & 20145
			NZ / Other countries	26259 & 20146		
	←	119887		16766 & 12465	On request	16754 & 12517
G50 B	119888	→	Australia only	22948 & 20146	Use NZ LPG kit	22961 & 20145
			NZ / Other countries	26260 & 20146		
	←	119887		16767 & 12465	On request	16755 & 12517
G50 C	119888	→	Australia only	22949 & 20146	Use NZ LPG kit	22962 & 20145
			NZ / Other countries	26261 & 20146		
	←	119887		16768 & 12465	On request	16756 & 12517
G50 D	119888	→	Australia only	22950 & 20146	Use NZ LPG kit	22963 & 20145
			NZ / Other countries	26262 & 20146		
	←	119887		16769 & 12465	On request	16757 & 12517
G50-8 A	119888	→	Australia only	22951 & 20146	Use NZ LPG kit	22964 & 20145
			NZ / Other countries	26263 & 20146		
	←	119887		16770 & 12465	On request	16758 & 12517
G50-8 B	119888	→	Australia only	22952 & 20146	Use NZ LPG kit	22965 & 20145
			NZ / Other countries	26264 & 20146		
	←	119887		16771 & 12465	On request	16759 & 12517
G50-8 C	119888	→	Australia only	22953 & 20146	Use NZ LPG kit	22966 & 20145
			NZ / Other countries	26265 & 20146		
	←	119887		16772 & 12465	On request	16760 & 12517
G50-8 D	119888	→	Australia only	22954 & 20146	Use NZ LPG kit	22967 & 20145
			NZ / Other countries	26266 & 20146		
	←	119887		16773 & 12465	On request	16761 & 12517

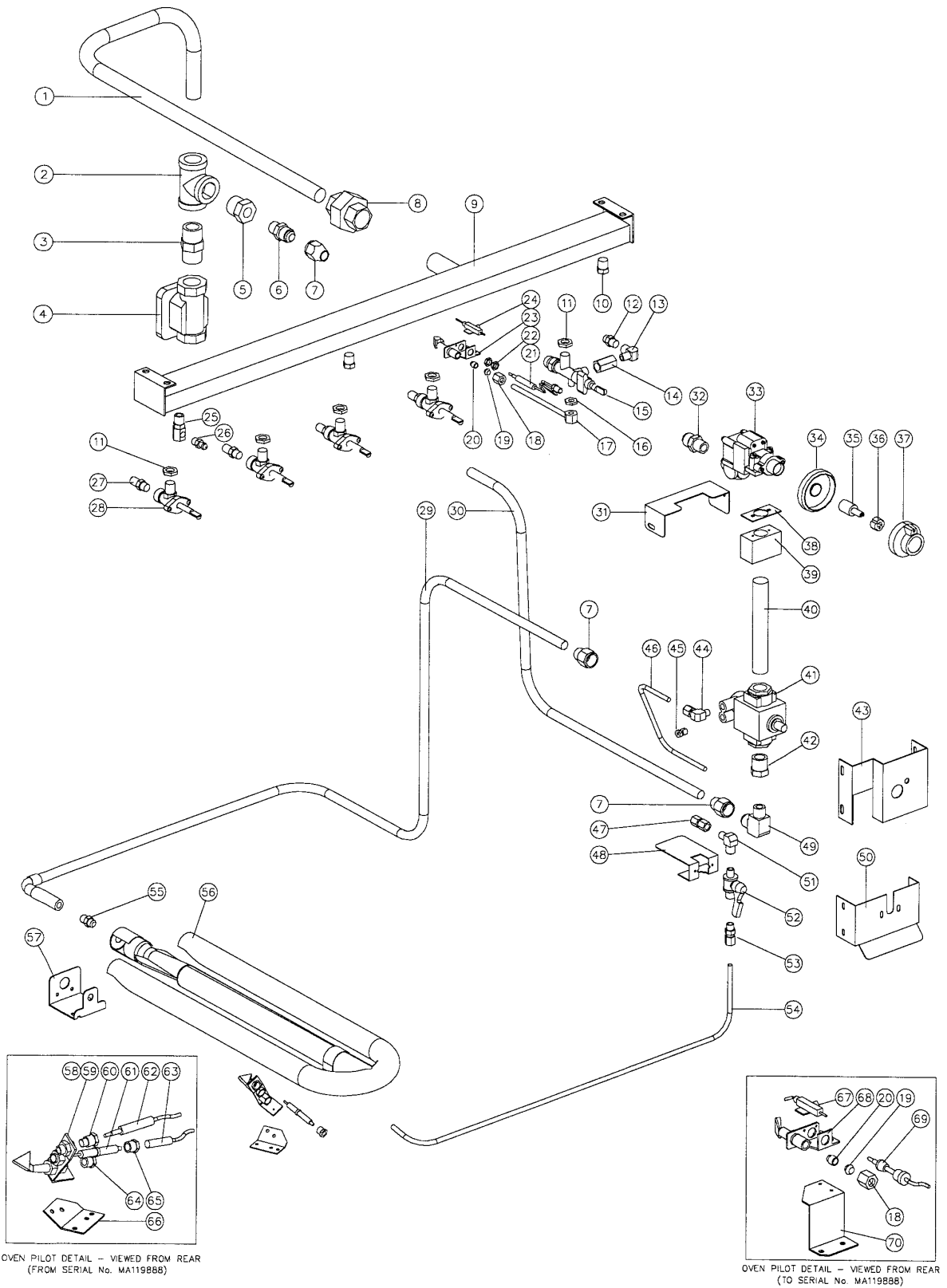
9.2.1 GAS PIPING ASSEMBLY - STD

From s/n 126757



Pos	Part No	Description
1	014803	HOB SUPPLY PIPE
2	011833	TEE - 3/4"
3	013473	NIPPLE - 3/4" HEX
4	011853	REGULATOR (NATURAL GAS ONLY)
5	012048	REDUCING BUSH - 3/8" x 3/4"
6	011003	CONNECTOR - 1/2" x 3/8"
7	011002	CONE NUT
8	011827	MACK UNION - 3/4"
9	004147	MANIFOLD G50
10	011148	PLUG - 1/4"
11	013215	BACKNUT - 1/4" BSP
12	032130	GRIDDLE INJECTOR Ø1.30mm - LP GAS
	032210	GRIDDLE INJECTOR Ø2.10mm - NATURAL GAS
13	011634	PILOT ELBOW (UP TO S/N 278399) (NOT AVAILABLE REFER ITEM 15, 016518)
	026022	PILOT ELBOW (FROM S/N 278400) (NOT AVAILABLE REFER ITEM 15, 016518)
14	012918	OUTLET CONNECTOR (NOT AVAILABLE REFER ITEM 15, 016518)
15	016518	GRIDDLE TAP ASSEMBLY (INCLUDES ITEMS 11,13,14,22)
16	019215K	GRIDDLE PILOT BURNER KIT (INCLUDES ITEMS 17,19,20,24,25)
17	018741	CLAMP NUT
18	019428	THERMOCOUPLE - GRIDDLE
	019575	M10 THERMOCOUPLE SPLIT NUT
19	018692	PILOT INJECTOR Ø0.20mm - LP GAS (GRIDDLE)
	019217	PILOT INJECTOR Ø0.23mm - LP GAS (OVEN)
	018693	PILOT INJECTOR Ø0.32mm - NATURAL GAS
20	018740	COMPRESSION NUT 1/4"
	018739	OLIVE
21	020656	GRIDDLE PILOT SUPPLY TUBE
22	012919	BACKNUT
23	018095	HIGH TENSION LEAD
24	018742	ELECTRODE NUT
25	018744	PILOT ELECTRODE
26	019425	GRIDDLE PILOT BRACKET
27	011741	PRESSURE ADAPTER
28	019371	PRESSURE TEST POINT
29	034130	OPEN BURNER INJECTOR Ø1.30mm - LP GAS
	034210	OPEN BURNER INJECTOR Ø2.10mm - NATURAL GAS
30	020639	GAS CONTROL - OPEN BURNERS
31	019255	CONTROL SUPPLY PIPE
32	228703	GAS CONTROL KIT - OVEN THERMOSTAT
	022409	LOW FIRE SCREW - LPG 1.0mm
	022408	LOW FIRE SCREW - NAT 1.5mm
	019260	CONTROL BRACKET RH
	019259	CONTROL BRACKET LH
33	013837	CONNECTOR - 3/8" x 1/2"
34	018097	1/4" NUT & OLIVE
35	019258	PILOT TUBE
36	020253	THERMOCOUPLE - OVEN
37	019256	OVEN SUPPLY PIPE
38	032150	OVEN INJECTOR Ø1.50mm - PROPANE GAS
	032250	OVEN INJECTOR Ø2.50mm - NATURAL GAS
39	011310	OVEN BURNER
40	012254	INJECTOR SUPPORT BRACKET
41	018691K	OVEN PILOT BURNER KIT (INCLUDES ITEMS 17,19,20,24,25)
42	019407	HIGH TENSION LEAD
43	019330	OVEN PILOT BRACKET
44	023863	GRIDDLE PILOT DRAFT BAFFLE (FROM S/N 215176)

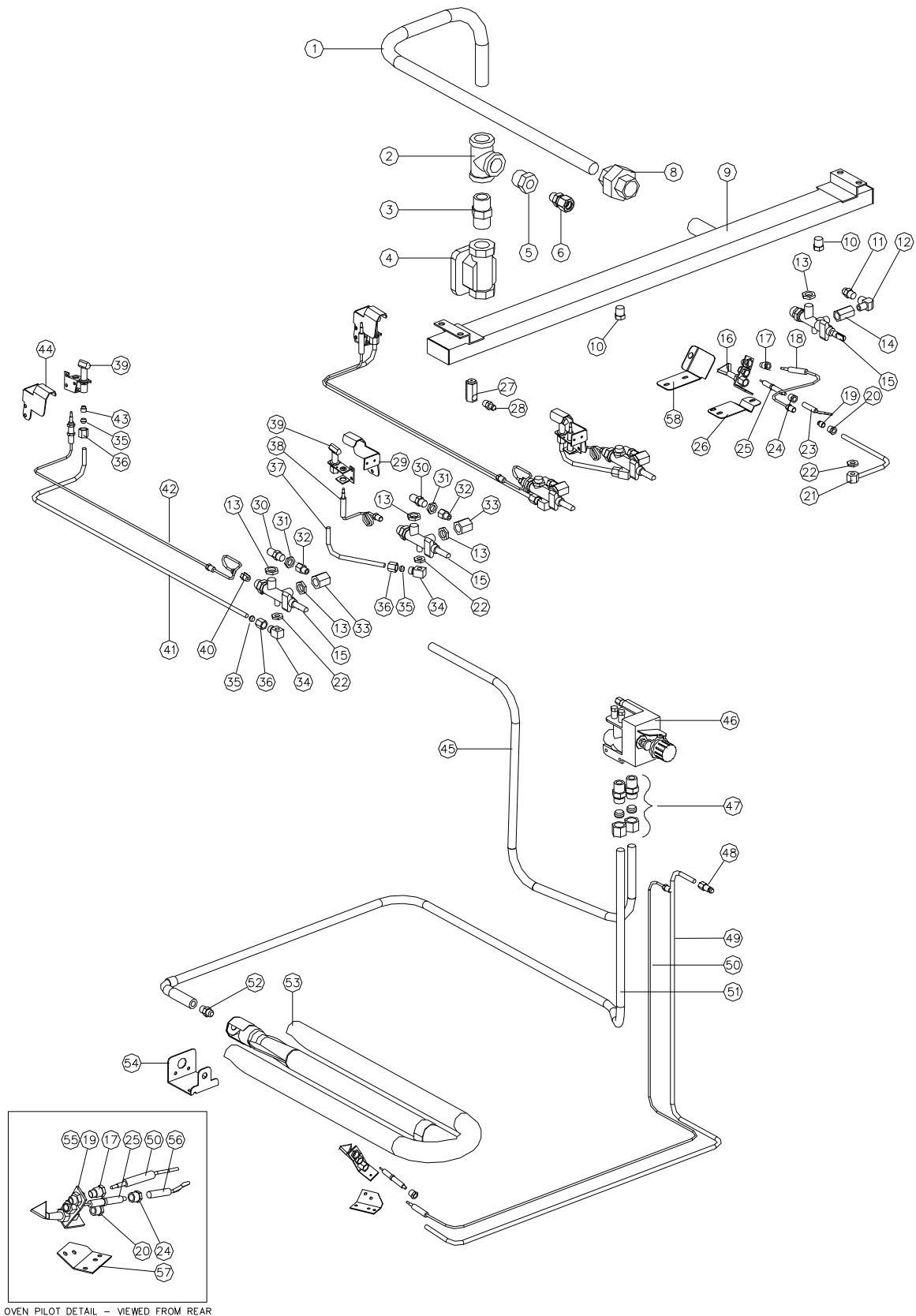
9.2.2 GAS PIPING ASSEMBLY - STD To s/n 126756



Pos	Part No	Description
1	014803	HOB SUPPLY PIPE
2	011833	TEE - 3/4"
3	013473	NIPPLE
4	011853	REGULATOR (NATURAL GAS ONLY)
5	012048	REDUCING BUSH - 3/8" x 3/4"
6	011003	CONNECTOR - 1/2" x 3/8"
7	011002	CONE NUT
8	011827	MACK UNION
9	004147	MANIFOLD G50
	004148	MANIFOLD G50-8
10	011148	PLUG - 1/4"
11	013215	BACKNUT - 1/4" BSP
12	032130	GRIDDLE INJECTOR Ø1.30 mm - LPG
	032210	GRIDDLE INJECTOR Ø2.10 mm - NATURAL GAS
13	011634	PILOT ELBOW (UP TO S/N 278399)(NOT AVAILABLE REFER ITEM 15, 016518)
	026022	PILOT ELBOW (FROM S/N 278400)(NOT AVAILABLE REFER ITEM 15, 016518)
14	012918	OUTLET CONNECTOR (NOT AVAILABLE REFER ITEM 15, 016518)
15	016518	GRIDDLE TAP ASSEMBLY (ASSEMBLED WITH ITEMS 11,13,14,16)
16	012919	BACKNUT- 5/16" UNF
17	012921	PILOT TUBE ASSEMBLY
18	011287	NUT (PART OF ITEM 23,68)
19	011286	OLIVE (PART OF ITEM 23,68)
20	011650	PILOT SPUD - LPG
	011651	PILOT SPUD - NATURAL
21	012916	THERMOCOUPLE - 300 mm
22	-----	THERMOCOUPLE NUTS (PART OF ITEM 21)
23	012699K	GRIDDLE PILOT KIT (ASSEMBLED WITH ITEMS 18,19,20)
24	013801	PIEZO ELECTRODE
	016512	H.T LEAD (NOT ILLUSTRATED)
25	011741	PRESSURE ADAPTOR
26	011337	PRESSURE TEST POINT
27	034130	OPEN BURNER INJECTOR Ø1.30 mm - LPG
	034210	OPEN BURNER INJECTOR Ø2.10 mm - NATURAL GAS
28	020639	GAS TAP (FROM S/N 125327)
	011154	GAS TAP (TO S/N 125326)
29	012060	OVEN SUPPLY PIPE
30	014801	SAFETY SUPPLY PIPE
31	015174	CLAMP BRACKET
32	011643	STRAIGHT CONNECTOR
33	011648	THERMOSTAT ASSEMBLY (ASSEMBLED WITH ITEMS 34,35,36,38)
34		ESCUTCHEON (PART OF ITEM 33)
35		SHAFT (PART OF ITEM 33)
36		SHAFT BUSH (PART OF ITEM 33)
37	011725	THERMOSTAT KNOB (°F)
38		GASKET (PART OF ITEM 33)
39	015109	THERMOSTAT MOUNTING BLOCK
40	015173	NIPPLE - 1/2" x 140 mm
41	013153	FLAME FAILURE CONTROL
42	011656	REDUCING BUSH - 3/8" x 1/2"
43	013182	SAFETY MOUNTING BRACKET
44	011634	ELBOW
45	013154	THERMOCOUPLE SPLIT NUT
46	013190	PILOT SUPPLY TUBE
47	011742	CONNECTOR - 1/8"F x 1/4" COMPRESSION
48	013184	CLAMP BRACKET

49	011747	ELBOW - 3/8" x 1/2"
50	013183	BALL VALVE MOUNTING BRACKET
51	011634	ELBOW
52	013155	BALL VALVE
53	012753	CONNECTOR - 1/8"M x 1/4" COMPRESSION
54	020144	PILOT TUBE
55	032150	OVEN INJECTOR Ø1.50 mm - LPG
	032230	OVEN INJECTOR Ø2.30 mm - NATURAL GAS
56	011310	OVEN BURNER
57	012254	INJECTOR SUPPORT BRACKET
58	018691K	OVEN PILOT BURNER KIT (INCLUDES ITEMS 59,60,61,64,65)(FROM S/N 119888)
59	018692	OVEN PILOT INJECTOR Ø0.20mm - PROPANE GAS
	018693	OVEN PILOT INJECTOR Ø0.32mm - NATURAL GAS
60	018741	CLAMP NUT (INCLUDED AS PART OF ITEM 58)
61	018744	PILOT ELECTRODE (INCLUDED AS PART OF ITEM 58)
62	019429	THERMOCOUPLE (FROM S/N 119888)
63	019407	H.T LEAD (FROM S/N 119888)
64	018740	COMPRESSION NUT (INCLUDED AS PART OF ITEM 58)
	018739	OLIVE (NOT ILLUSTRATED) (INCLUDED AS PART OF ITEM 58)
65	018742	ELECTRODE NUT (INCLUDED AS PART OF ITEM 58)
66	019330	OVEN PILOT BRACKET (FROM S/N 119888)
67	018347	IGNITOR ELECTRODE - OVEN (TO S/N 119887)
	018252	ELECTRODE / HT LEAD ASSEMBLY (NOT ILLUSTRATED)
68	012331K	OVEN PILOT KIT (ASSEMBLED WITH ITEMS 18,19,20)(TO S/N 119887)
69	011771	THERMOCOUPLE (TO S/N 119887)
70	012253	PILOT BRACKET (TO S/N 119887)

9.3.1 GAS PIPING ASSEMBLY - FFP From s/n 126757

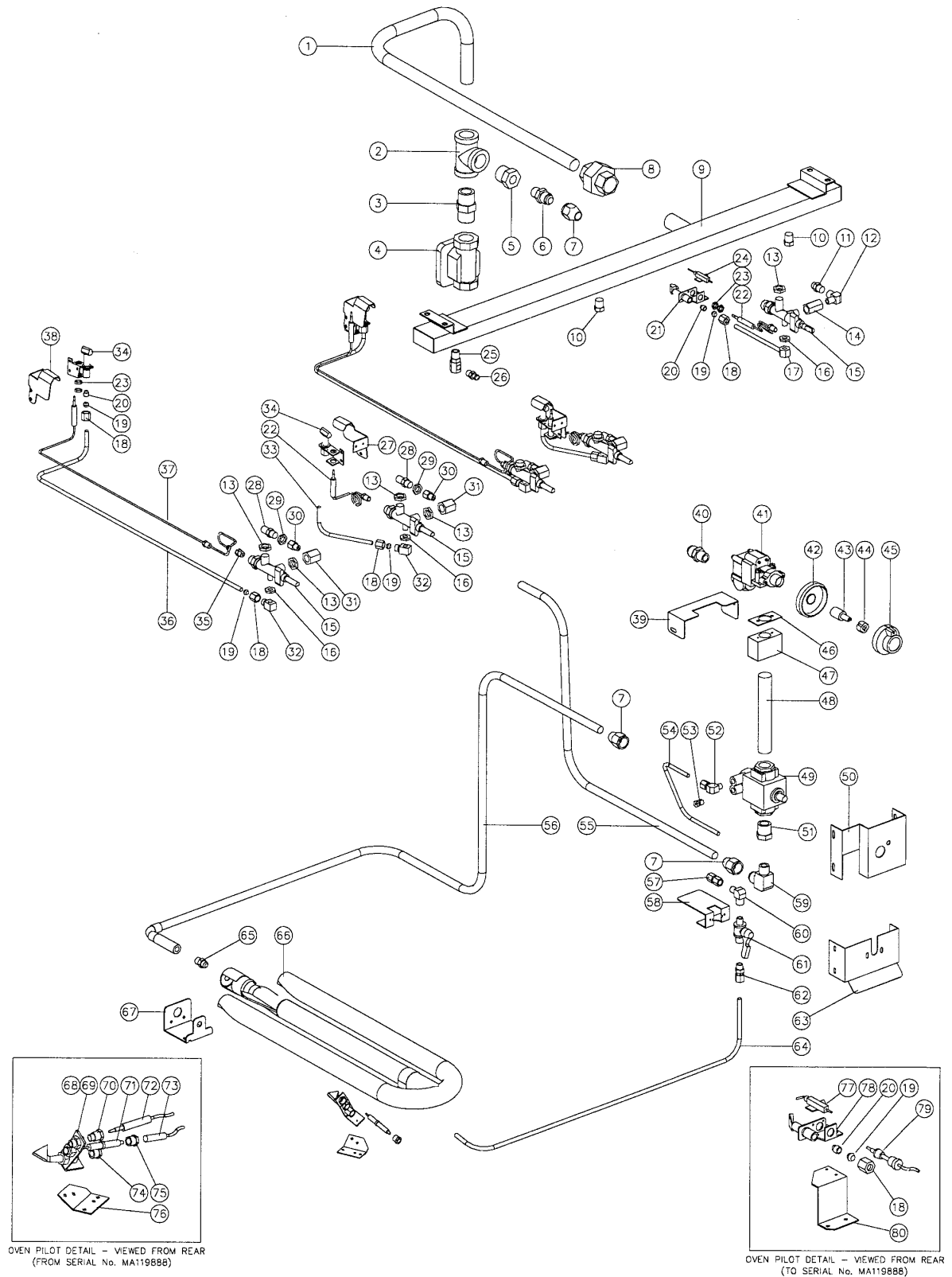


Pos	Part No	Description
1	014803	HOB SUPPLY PIPE
2	011833	TEE - 3/4"
3	013473	NIPPLE - 3/4" HEX
4	011853	REGULATOR (NATURAL GAS ONLY)
5	012048	REDUCING BUSH - 3/8" x 3/4"
6	011003	CONNECTOR - 1/2" x 3/8"
7	011002	CONE NUT
8	011827	MACK UNION - 3/4"
9	004480	MANIFOLD G50
	004481	MANIFOLD G50-8
10	011148	PLUG - 1/4"
11	032130	GRIDDLE INJECTOR Ø1.30mm - LP GAS
	032210	GRIDDLE INJECTOR Ø2.10mm - NATURAL GAS - 1/4" BSP
12	011634	PILOT ELBOW (UP TO S/N 278399) (NOT AVAILABLE REFER ITEM 15, 016518)
	026022	PILOT ELBOW (FROM S/N 278400) (NOT AVAILABLE REFER ITEM 15, 016518)
13	013215	BACKNUT
14	012918	OUTLET CONNECTOR (NOT AVAILABLE REFER ITEM 15, 016518)
15	016518	GRIDDLE GAS CONTROL ASSEMBLY (INCLUDES ITEMS 12,13,14,22)
	017611	OPEN BURNER GAS CONTROL ASSY (INCLUDES ITEMS 13,22,33)
16	019215K	GRIDDLE PILOT BURNER KIT (INCLUDES ITEMS 17,19,20,24,25)
17	018741	CLAMP NUT
18	019428	THERMOCOUPLE - GRIDDLE
	019575	M10 THERMOCOUPLE SPLIT NUT
19	018692	PILOT INJECTOR Ø0.20mm - LP GAS (GRIDDLE)
	019217	PILOT INJECTOR Ø0.23mm - LP GAS (OVEN)
	018693	PILOT INJECTOR Ø0.32mm - NATURAL GAS
20	018740	COMPRESSION NUT 1/4"
	018739	OLIVE
21	020656	GRIDDLE PILOT SUPPLY TUBE
22	012919	BACKNUT
23	018095	HIGH TENSION LEAD
24	018742	ELECTRODE NUT
25	018744	PILOT ELECTRODE
26	019425	GRIDDLE PILOT BRACKET
27	011741	PRESSURE ADAPTOR
28	019371	PRESSURE TEST POINT
29	017607	PILOT SHROUD - FRONT
30	034130	OPEN BURNER INJECTOR Ø1.30 mm - LPG
	034210	OPEN BURNER INJECTOR Ø2.10 mm - NATURAL GAS
31	011740	JET BACKNUT (UP TO S/N 246144)
32	017613	ADAPTOR - 1/8" BSP M/F (NOT AVAILABLE, REFER TO ITEM 15, 017611 ASSEMBLY)
33	017612	INJECTOR ELBOW (UP TO S/N 278399)(NOT AVAILABLE, REFER TO ITEM 15, 017611 ASSEMBLY)
	026023	INJECTOR ELBOW (FROM S/N 278400)(NOT AVAILABLE, REFER TO ITEM 15, 017611 ASSEMBLY)
34	017079	PILOT OUTLET FITTING
35	011286	OLIVE
36	011287	NUT
37	017614	PILOT TUBE FRONT
38	012916	THERMOCOUPLE - 300mm
	024573	THERMOCOUPLE LOCK-NUT (NOT ILLUSTRATED)
39	013000K	PILOT BURNER KIT (INCLUDES ITEMS 43)
40	019575	THERMOCOUPLE SPLIT NUT
41	017615	PILOT TUBE REAR
42	017617	THERMOCOUPLE - 750 mm

	024573	THERMOCOUPLE LOCK-NUT (NOT ILLUSTRATED)
43	011650	PILOT SPUD - LPG
	011651	PILOT SPUD - NAT
44	017608	PILOT SHROUD - REAR
45	019255	CONTROL SUPPLY PIPE
46	228703	GAS CONTROL KIT - OVEN THERMOSTAT
	022409	LOW FIRE SCREW - LPG 1.0mm
	022408	LOW FIRE SCREW - NAT 1.5mm
47	013837	CONNECTOR - 3/8" x 1/2"
48	018097	1/4" NUT & OLIVE
49	019258	PILOT TUBE
50	020253	THERMOCOUPLE - OVEN
51	019256	OVEN SUPPLY PIPE
52	032150	OVEN INJECTOR Ø1.50mm - LP GAS
	032250	OVEN INJECTOR Ø2.50mm - NATURAL GAS
53	011310	OVEN BURNER
54	012254	INJECTOR SUPPORT BRACKET
55	018691K	OVEN PILOT BURNER KIT (INCLUDES ITEMS 17,19,20,24,25)
56	019407	HIGH TENSION LEAD
57	019330	OVEN PILOT BRACKET
58	023863	GRIDDLE PILOT DRAFT BAFFLE (FROM S/N 215176)

9.3.2 GAS PIPING ASSEMBLY - FFP

To s/n 126756



Pos	Part No	Description
1	014803	HOB SUPPLY PIPE
2	011833	TEE - 3/4"
3	013473	NIPPLE
4	011853	REGULATOR (NATURAL GAS ONLY)
5	012048	REDUCING BUSH - 3/8" x 3/4"
6	011003	CONNECTOR - 1/2" x 3/8"
7	011002	CONE NUT
8	011827	MACK UNION
9	004480	MANIFOLD G50
	004481	MANIFOLD G50-8
10	011148	PLUG - 1/4"
11	032130	GRIDDLE INJECTOR Ø1.30 mm - LPG
	032210	GRIDDLE INJECTOR Ø2.10 mm - NATURAL GAS
12	011634	PILOT ELBOW (UP TO S/N 278399) (NOT AVAILABLE REFER ITEM 15, 016518)
	026022	PILOT ELBOW (FROM S/N 278400) (NOT AVAILABLE REFER ITEM 15, 016518)
13	013215	BACKNUT - 1/4" BSP
14	012918	OUTLET CONNECTOR (NOT AVAILABLE REFER ITEM 15, 016518)
15	016518	GRIDDLE TAP ASSEMBLY (ASSEMBLED WITH ITEMS 12,13,14,16)
	017611	OPEN BURNER GAS CONTROL ASSY (INCLUDES ITEMS 13,16,31)
16	012919	BACKNUT- 5/16" UNF
17	012921	PILOT TUBE ASSEMBLY
18	011287	NUT (PART OF ITEM 21,78)
19	011286	OLIVE (PART OF ITEM 21,78)
20	011650	PILOT SPUD - LPG
	011651	PILOT SPUD - NATURAL
21	012699K	GRIDDLE PILOT BURNER KIT (ASSEMBLED WITH ITEMS 18,19,20)
22	012916	THERMOCOUPLE - 300 mm
23	024573	THERMOCOUPLE LOCK-NUT
24	013801	PIEZO ELECTRODE
	016512	H.T LEAD (NOT ILLUSTRATED)
25	011741	PRESSURE ADAPTOR
26	011337	PRESSURE TEST POINT
27	017607	PILOT SHROUD - FRONT
28	034130	OPEN BURNER INJECTOR Ø1.30 mm - LPG
	034210	OPEN BURNER INJECTOR Ø2.10 mm - NATURAL GAS
29	011740	JET BACKNUT
30	017613	ADAPTOR - 1/8" BSP M/F (NOT AVAILABLE, REFER TO ITEM 15, 017611 ASSEMBLY)
31	017612	INJECTOR ELBOW (UP TO S/N 278399)(NOT AVAILABLE, REFER TO ITEM 15, 017611 ASSEMBLY)
	026023	INJECTOR ELBOW (FROM S/N 278400)(NOT AVAILABLE, REFER TO ITEM 15, 017611 ASSEMBLY)
32	017079	PILOT OUTLET FITTING
33	017614	PILOT TUBE FRONT
34	013000K	PILOT BURNER KIT (USES ITEM 20 PILOT SPUDS)
35	019575	THERMOCOUPLE SPLIT NUT
36	017615	PILOT TUBE REAR
37	017617	THERMOCOUPLE - 750 mm
	024573	THERMOCOUPLE LOCK-NUT (NOT ILLUSTRATED)
38	017608	PILOT SHROUD - REAR
39	015174	CLAMP BRACKET
40	011643	STRAIGHT CONNECTOR
41	011648	THERMOSTAT ASSEMBLY (ASSEMBLED WITH ITEMS 42,43,44,46)
42		ESCUTCHEON (PART OF ITEM 41)
43		SHAFT (PART OF ITEM 41)
44		SHAFT BUSH (PART OF ITEM 41)

45	011725	THERMOSTAT KNOB °F
46		GASKET (PART OF ITEM 41)
47	015109	THERMOSTAT MOUNTING BLOCK
48	015173	NIPPLE - 1/2" x 140 mm
49	013153	FLAME FAILURE CONTROL
50	013182	SAFETY MOUNTING BRACKET
51	011656	REDUCING BUSH - 3/8" x 1/2"
52	011634	ELBOW
53	013154	THERMOCOUPLE SPLIT NUT
54	013190	PILOT SUPPLY TUBE
55	014801	SAFETY SUPPLY PIPE
56	012060	OVEN SUPPLY PIPE
57	011742	CONNECTOR - 1/8"F x 1/4" COMPRESSION
58	013184	CLAMP BRACKET
59	011747	ELBOW - 3/8" x 1/2"
60	011634	ELBOW
61	013155	BALL VALVE
62	012753	CONNECTOR - 1/8"M x 1/4" COMPRESSION
63	013183	BALL VALVE MOUNTING BRACKET
64	020144	PILOT TUBE
65	032150	OVEN INJECTOR Ø1.50 mm - LPG
	032230	OVEN INJECTOR Ø2.30 mm - NATURAL GAS
66	011310	OVEN BURNER
67	012254	INJECTOR SUPPORT BRACKET
68	018691K	OVEN PILOT KIT (INCLUDES ITEMS 69,70,71,74,75)(FROM S/N 119888)
69	018692	OVEN PILOT INJECTOR Ø0.20mm - PROPANE GAS
	018693	OVEN PILOT INJECTOR Ø0.32mm - NATURAL GAS
70	018741	CLAMP NUT (INCLUDED AS PART OF ITEM 68)
71	018744	PILOT ELECTRODE (INCLUDED AS PART OF ITEM 68)
72	019429	THERMOCOUPLE (FROM S/N 119888)
73	019407	H.T LEAD (FROM S/N 119888)
74	018740	COMPRESSION NUT (INCLUDED AS PART OF ITEM 68)
	018739	OLIVE (NOT ILLUSTRATED) (INCLUDED AS PART OF ITEM 68)
75	018742	ELECTRODE NUT (INCLUDED AS PART OF ITEM 68)
76	019330	OVEN PILOT BRACKET (FROM S/N 119888)
77	018347	IGNITOR ELECTRODE - OVEN (TO S/N 119887)
	018252	ELECTRODE / HT LEAD ASSEMBLY (NOT ILLUSTRATED)
78	012331K	OVEN PILOT KIT (ASSEMBLED WITH ITEMS 18,19,20)(TO S/N 119887)
79	011771	THERMOCOUPLE (TO S/N 119887)
80	012253	PILOT BRACKET (TO S/N 119887)