

# G32 SPARE PARTS LIST



Page2/4

## 3.1 MAIN ASSEMBLY

| Pos | Part No. | Description   |
|-----|----------|---|
| 1   | 004237   | OVEN INNER  |
| 2   | -----    | INSULATION  |
| 3   | -----    | INSULATION  |
| 4   | 014031   | OVEN BAFFLE STUD  |
|     | 019367   | OVEN BAFFLE STUD (UK ONLY)  |
| 5   | 013951   | HINGE PLATE   |
| 6   | 013987   | INSULATOR   |
| 7   | 018033   | SEAL RETAINING CLIP (USED WITH 018032 / 018969 SEALS)   |
| 8   | 018969   | OVEN SEAL (1PIECE - FROM S/N 25263)   |
|     | 018032   | OVEN SEAL (1PIECE CONTINUOUS - FROM JUNE 1994 TO S/N 25262)<br>(NOT ILLUSTRATED) (SEAL KIT UPGRADE TO 018969 AVAILABLE) |
|     | 014226   | OVEN SEAL - HORIZONTAL (2 PER - TO JUNE 1994)(NOT<br>ILLUSTRATED)   |
|     | 014227   | OVEN SEAL - VERTICAL (2 PER - TO JUNE 1994)(NOT ILLUSTRATED)  |
| 9   | 013974   | PHIAL GUARD   |
| 10  | 015930   | BAFFLE LOCATING BRACKET   |
| 11  | 004397   | RADIATION BAFFLE  |
| 12  | 016243   | VENT TUBE   |
| 13  | 016245   | HOOD SPACER   |
| 14  | 016241   | VENT HOOD PLATE   |
| 15  | 004238   | BOTTOM PANEL  |
| 16  | 004351   | INJECTOR ACCESS PANEL   |
| 17  | 004350   | SIDE SERVICE PANEL  |
| 18  | 014950   | BASE PANEL  |
| 19  | 004352   | PIPE MOUNTING BRACKET   |
| 20  | 013986   | REAR VERTICAL   |
| 21  | 013975   | FRONT VERTICAL  |
| 22  | 013978   | L.H INSULATION PLATE  |
| 23  | 014727   | SIDE INSULATION PANEL   |
| 24  | 013968   | TOP INSULATION PANEL  |
| 25  | 014941   | INSULATION - SNORKEL  |
| 26  | 013976   | HEAT BLOCK PLATE  |
| 27  | 013972   | CATCH PLATE   |
| 28  | 013893   | DOOR SPRING CATCH   |
| 29  | 013985   | MICRO SWITCH BRACKET  |
| 30  | 016242   | WRAPPER   |
| 31  | 017872   | INSPECTION PANEL  |
| 32  | 015589   | REAR SERVICE PANEL - BOTTOM   |
| 33  | 015590   | REAR SERVICE PANEL - TOP  |
| 34  | 015591   | JUNCTION BOX  |
| 35  | 015114   | BURNER BOX REFLECTOR  |
| 36  | 014700   | INSULATION - BURNER BOX   |
| 37  | 014701   | INSULATION - BURNER BOX FRONT/REAR  |
| 38  | 014702   | INSULATION - BURNER BOX LONG  |
| 39  | 014703   | INSULATION - BURNER BOX SHORT   |

# G32 SPARE PARTS LIST

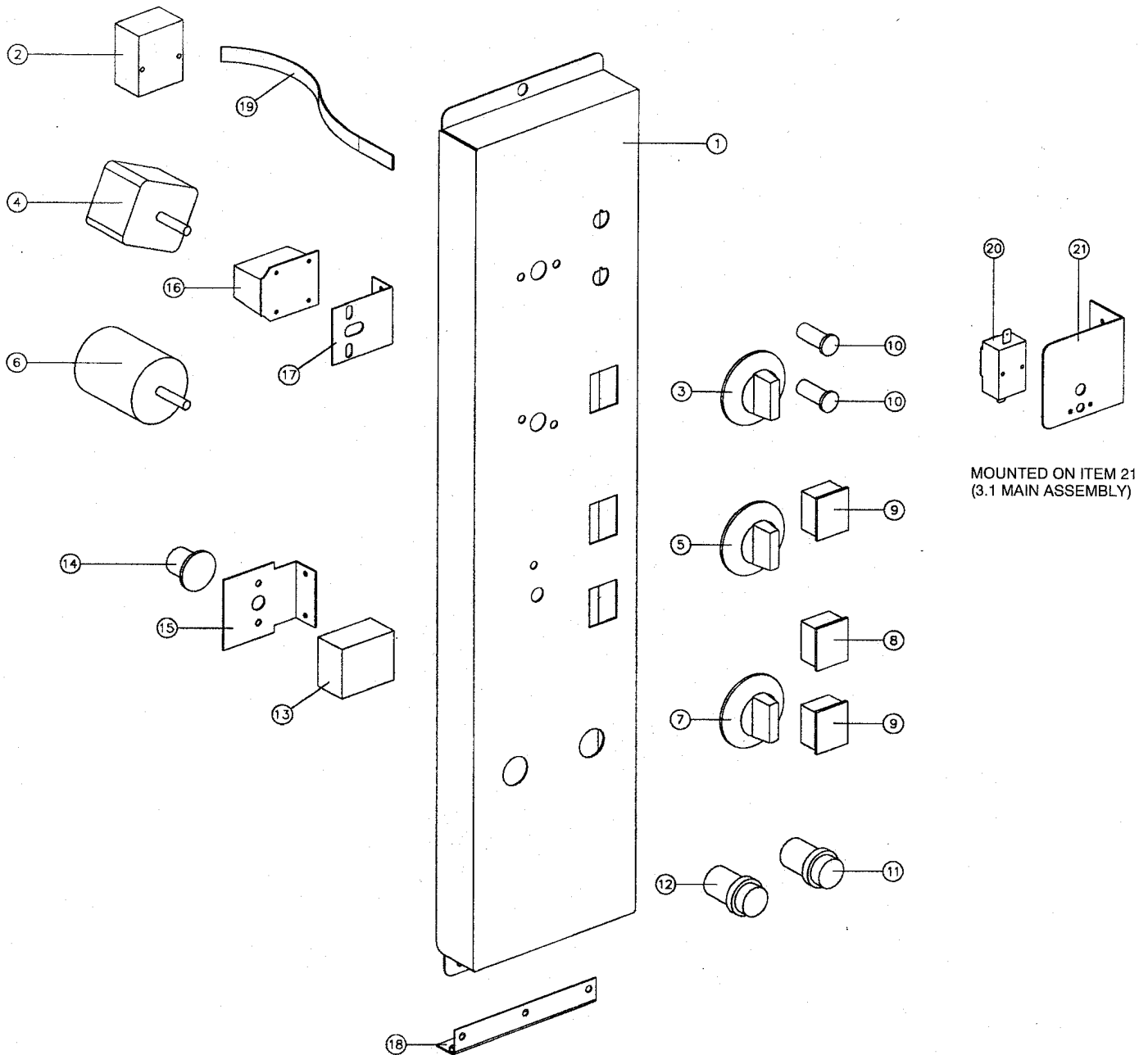


Page3/4

## 3.1 MAIN ASSEMBLY

| Pos | Part No. | Description   |
|-----|----------|---|
| 40  | 014940   | INSULATION - BURNER BOX                             |
| 41  | 004280   | BURNER BOX BOTTOM                                   |
| 42  | 015327   | BURNER SUPPORT BRACKET                              |
| 43  | 014728   | BURNER BOX DEFLECTOR                                |
| 44  | 004312   | BURNER  |
| 45  | 014888   | HEAT BOX - FRONT                                    |
| 46  | 014889   | HEAT BOX - REAR                                     |
| 47  | 014890   | HEAT BOX - L.H SIDE                                 |
| 48  | 014891   | HEAT BOX - R.H SIDE                                 |
| 49  | 014892   | HEAT BOX - R.H OUTER                                |
| 50  | 014977   | INSULATION KEEP CHANNEL - FRONT                     |
| 51  | 015537   | INSULATION KEEP CHANNEL - REAR                      |
| 52  | 014943   | INSULATION - HEAT BOX                               |
| 53  | 014944   | INSULATION - HEAT BOX INNER                         |
| 54  | -----    | INSULATION  |
| 55  | -----    | INSULATION  |
| 56  | -----    | CONTROL ASSEMBLY (SEE SECTION 3.2)                  |
| 57  | 013996   | MICROSWITCH (UP TO S/N 27916)                       |
|     | 019491   | MICROSWITCH (FROM S/N 27916)                        |
| 58  | 013977   | INSULATOR   |
| 59  | 013520   | OVEN LIGHT ASSEMBLY                                 |
|     | 003002   | LIGHT GLASS   |
|     | 003434   | SILK GASKET   |
|     | 013521   | LAMP 40W (240V)                                     |
|     | 015825   | LAMP 40W (110V USA/CANADA ONLY)                     |
| 60  | 015598   | FAN   |
| 61  | 014672   | MOTOR (240V)  |
|     | 015821   | MOTOR (110V USA/CANADA ONLY)                        |
| 62  | 014694   | MOTOR MOUNTING BOX                                  |
| 63  | 015947   | MOTOR SPACER STUD                                   |
| 64  | 018758   | CONTROL MOUNTING PANEL                              |
| 65  | 014983   | IGNITION BOX (ALL MARKETS EXCEPT USA/CANADA/UK)     |
|     | 014982   | IGNITION BOX (USA/CANADA ONLY)                      |
|     | 018730   | IGNITION BOX (UK ONLY)(NOT ILLUSTRATED)             |
|     | 014984   | TRANSFORMER (USA/CANADA ONLY)                       |
| 66  | 015115   | IGNITION ELECTRODE ASSEMBLY (ALL MARKETS EXCEPT UK) |
|     | 018760   | IGNITION ELECTRODE ASSEMBLY (UK ONLY)               |
| 67  | 015324   | GAS VALVE BRACKET                                   |
| 68  | 015090   | GAS PIPING ASSEMBLY (SEE SECTION 3.4)               |
| 69  | 012782   | HOSE CONNECTOR (ALL MARKETS EXCEPT UK)              |
|     | 019376   | HOSE ADAPTER (UK ONLY)                              |
| 70  | 015592   | WATER TUBE  |
| 71  | 015653   | SPRAY NOZZLE ASSEMBLY                               |
| 72  | 015588   | WATER SOLENOID BRACKET                              |
| 73  | 012781   | WATER SOLENOID 240V (EXCEPT USA/CANADA)             |

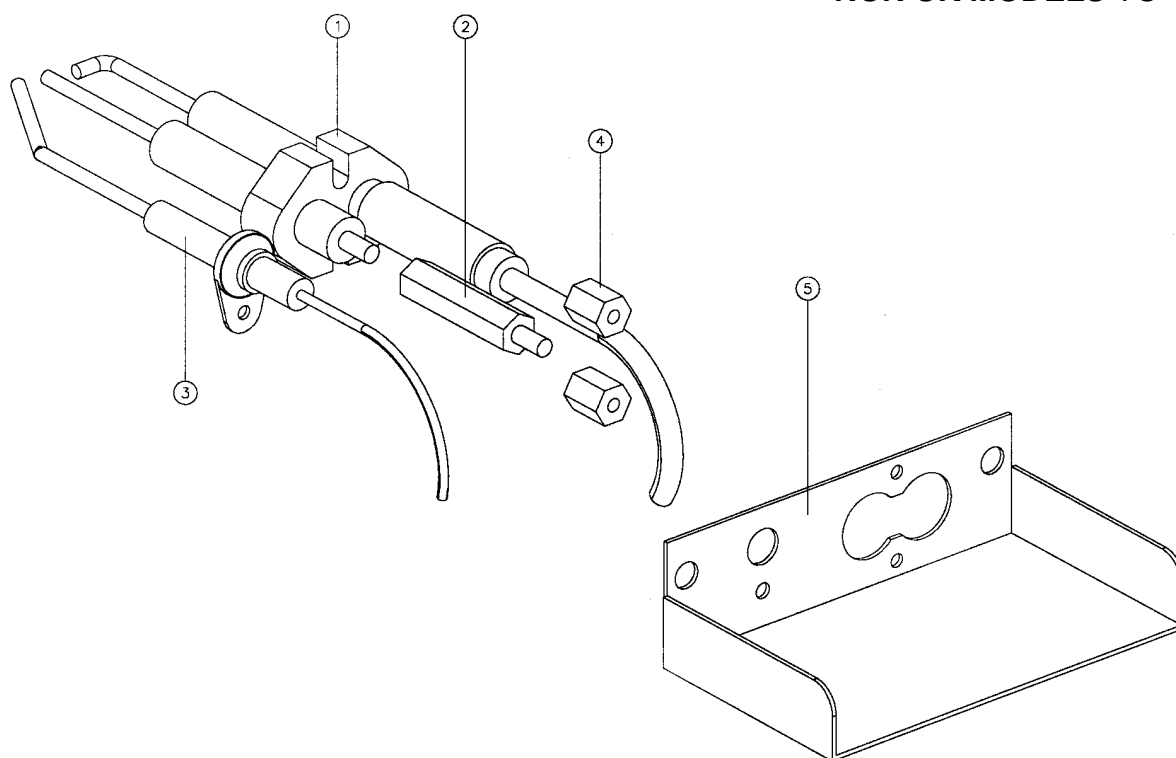
| Pos | Part No. | Description                      |
|-----|----------|----------------------------------|
|     | 015824   | WATER SOLENOID 110V (USA/CANADA) |
| 74  | 004353   | DOOR INNER                       |
| 75  | 002340   | DOOR INNER GLASS                 |
| 76  | 015349   | DOOR OUTER GLASS                 |
| 77  | 004451   | GLASS CLAMP ANGLE                |
| 78  | 015595   | DOOR TRIM                        |
| 79  | 015639   | DOOR HANDLE BRACKET              |
| 80  | 013892   | HANDLE                           |
| 81  | 020082   | TOP PIVOT BRACKET                |
|     | 017905   | BUSH                             |
| 82  | 020083   | BOTTOM PIVOT BRACKET             |
|     | 017905   | BUSH                             |
| 83  | 015168   | OVEN RACK                        |
| 84  | 015575   | SIDE RACK L.H                    |
| 85  | 015656   | FAN BAFFLE                       |
| 86  | 015274   | LEG ASSEMBLY                     |



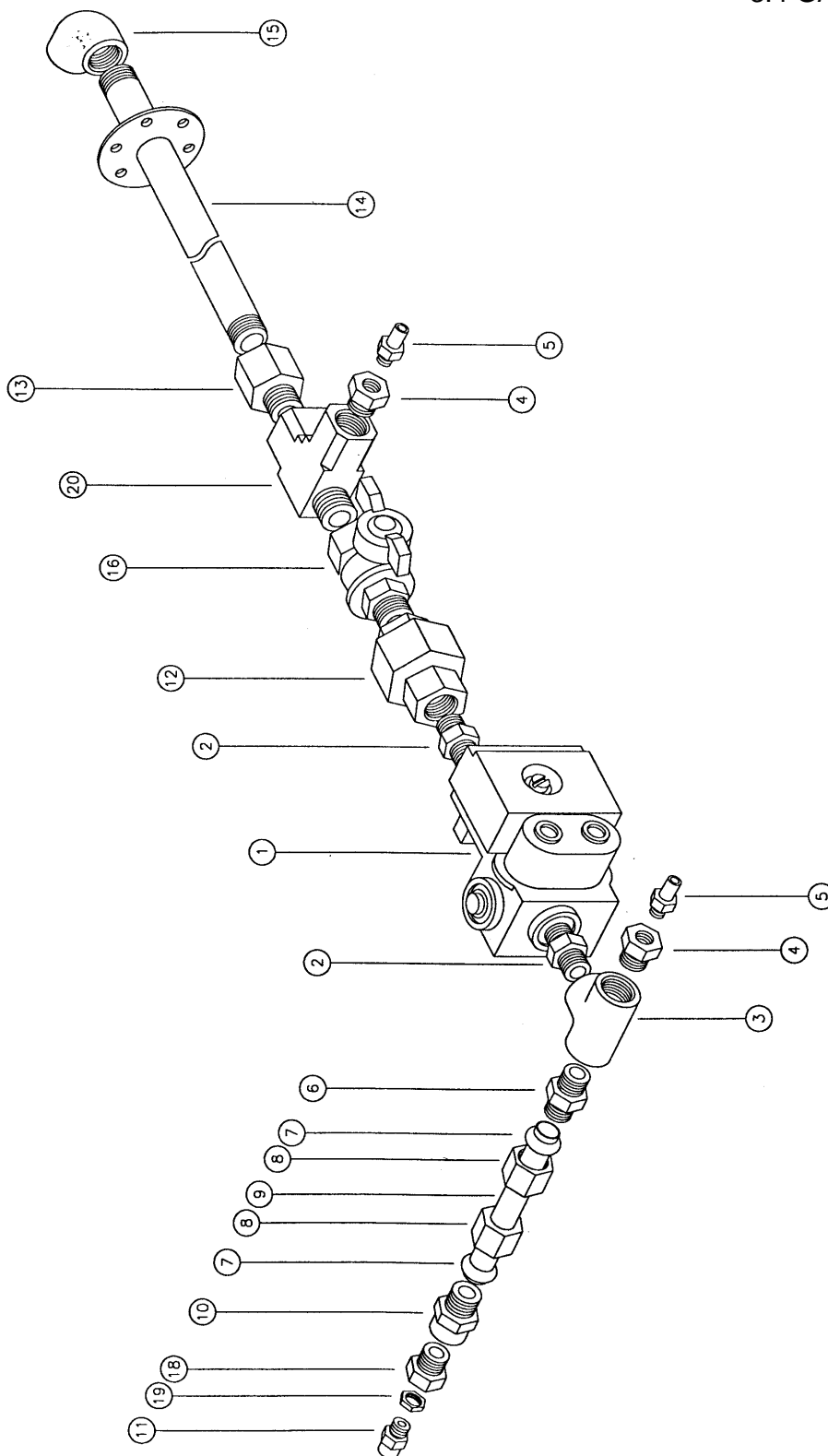
| Pos | Part No. | Description                                  |
|-----|----------|--|
| 1   | 004052   | CONTROL PANEL                                |
| 2   | 011987   | THERMOSTAT 50-320 °C                         |
| 3   | 015563   | KNOB °C                                      |
|     | 015566   | KNOB °F                                      |
| 4   | 011760   | TIMER - 1 Hr                                 |
| 5   | 015560   | TIMER KNOB - 1 Hr                            |
| 6   | 011419   | TIMER - 3 Hr (240V 50 Hz)                    |
|     | 011983   | TIMER - 3 Hr (240V 60 Hz)                    |
|     | 015823   | TIMER - 3 Hr (110V USA/CANADA ONLY)          |
| 7   | 015567   | TIMER KNOB - 3 Hr                            |
| 8   | 013543   | START SWITCH                                 |
| 9   | 013542   | INDICATOR LIGHT                              |
| 10  | 013528   | PILOT LIGHT                                  |
| 11  | 013891   | LIGHT SWITCH (ORANGE BUTTON)                 |
| 12  | 012895   | WATER SWITCH (BLUE BUTTON)                   |
| 13  | 018223   | HOLD THERMOSTAT                              |
| 14  | 018224   | HOLD THERMOSTAT KNOB                         |
| 15  | 017859   | HOLD THERMOSTAT BRACKET (AFFIX 018209 LABEL) |
| 16  | 011794   | BUZZER (240V)                                |
|     | 015822   | BUZZER (110V USA/CANADA ONLY)                |
| 17  | 014032   | BUZZER MOUNTING BRACKET                      |
| 18  | 016579   | HINGE  |
| 19  | 016602   | RETAINING STRAP                              |
| 20  | 019369   | OVER-TEMPERATURE THERMOSTAT (UK ONLY)        |
| 21  | 019380   | OVER-TEMP BRACKET (UK ONLY)                  |

## 3.3 IGNITION ELECTRODE ASSEMBLY

NON UK MODELS TO 10/1999



| Pos | Part No. | Description  |
|-----|----------|--|
|     | 015115   | IGNITION ELECTRODE ASSEMBLY (COMPLETE) - <b>OBSOLETE</b><br>- REPLACE WITH 022909 ELECTRODE ASSEMBLY UPGRADE KIT |
| 1   | 015316   | IGNITION SPARK ROD   |
| 2   | 016051   | ELECTRODE EXTENSION  |
| 3   | 015315   | FLAME SENSOR<br>(USE 022902 FLAME SENSOR)  |
| 4   | 016050   | ELECTRODE SPACER   |
| 5   | 015329   | IGNITION ELECTRODE BRACKET   |
| 6   | 090127   | VIDAFLEX SLEEVING  |





| Pos | Part No. | Description   |
|-----|----------|---|
| 1   | 019370   | GAS CONTROL VALVE <b>(240V ONLY)</b>  |
|     | 015626   | GAS CONTROL VALVE <b>(110V USA/CANADA ONLY)</b>   |
|     | 015541   | GAS CONTROL VALVE KIT <b>(240V - REPLACES VALVE TYPE 25M02 WITH 19370 - GAS VALVE TYPE 25M42)</b> |
|     | 019338   | ELECTRICAL CONNECTOR <b>(NOT ILLUSTRATED)</b>   |
| 2   | 015542   | CONNECTOR 3/8" BSP x 3/8" BSP   |
| 3   | 014989   | TEE 3/8" BSP  |
| 4   | 011601   | JET HOLDER 3/8" BSP x 1/8" BSP  |
| 5   | 019371   | PRESSURE TEST POINT   |
| 6   | 013837   | CONNECTOR MALE 1/2" TUBE x 3/8" BSP   |
| 7   | 013857   | OLIVE 1/2"  |
| 8   | 013858   | COMPRESSION NUT 1/2"  |
| 9   | 015308   | INJECTOR TUBE   |
| 10  | 014961   | CONNECTOR 1/2" TUBE x 3/8" BSP FEMALE   |
| 11  | 032170   | INJECTOR Ø1.70 mm - LPG/PROPANE GAS   |
|     | 032155   | INJECTOR Ø1.55 mm -G31 PROPANE GAS <b>(UK ONLY)</b>   |
|     | 032270   | INJECTOR Ø2.70 mm - NATURAL GAS   |
|     | 032260   | INJECTOR Ø2.60 mm - G20 NATURAL GAS <b>(UK ONLY)</b>  |
| 12  | 015313   | MACK UNION 3/8" BSP   |
| 13  | 015309   | ADAPTOR 3/8" BSP MALE x 1/2" BSP FEMALE   |
| 14  | 004383   | SUPPLY PIPE   |
| 15  | 015176   | ELBOW 1/2" BSP FEMALE   |
| 16  | 015310   | BALL VALVE 3/8" BSP   |
| 17  | 015314   | ADAPTOR 1/2" BSP x 1/2" NPT FEMALE  |
| 18  | 011601   | JET HOLDER 3/8" BSP x 1/8" BSP  |
| 19  | 011740   | BACK NUT 1/8" BSP   |
| 20  | 018108   | TEE 3/8" BSP MALE/FEMALE <b>(UK ONLY)</b>   |
|     | 015910   | CONVERSION KIT - NATURAL GAS TO LPG   |
|     | 019379   | CONVERSION KIT - NATURAL GAS TO PROPANE <b>(UK ONLY)</b>  |
|     | 016403   | CONVERSION KIT - LPG TO NATURAL GAS   |
|     | 019378   | CONVERSION KIT - PROPANE TO NATURAL GAS <b>(UK ONLY)</b>  |