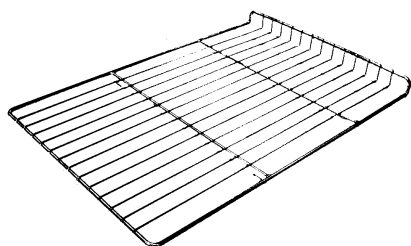

10. ACCESSORIES

OVEN RACKS (PART NO 015168)



**COOKIE KIT—SIX TRAY OPTION
(PART NOS 017156 & 017157)**



A25 STAINLESS STEEL STAND



**DOUBLE STACKING KIT
(PART NO 021545)**

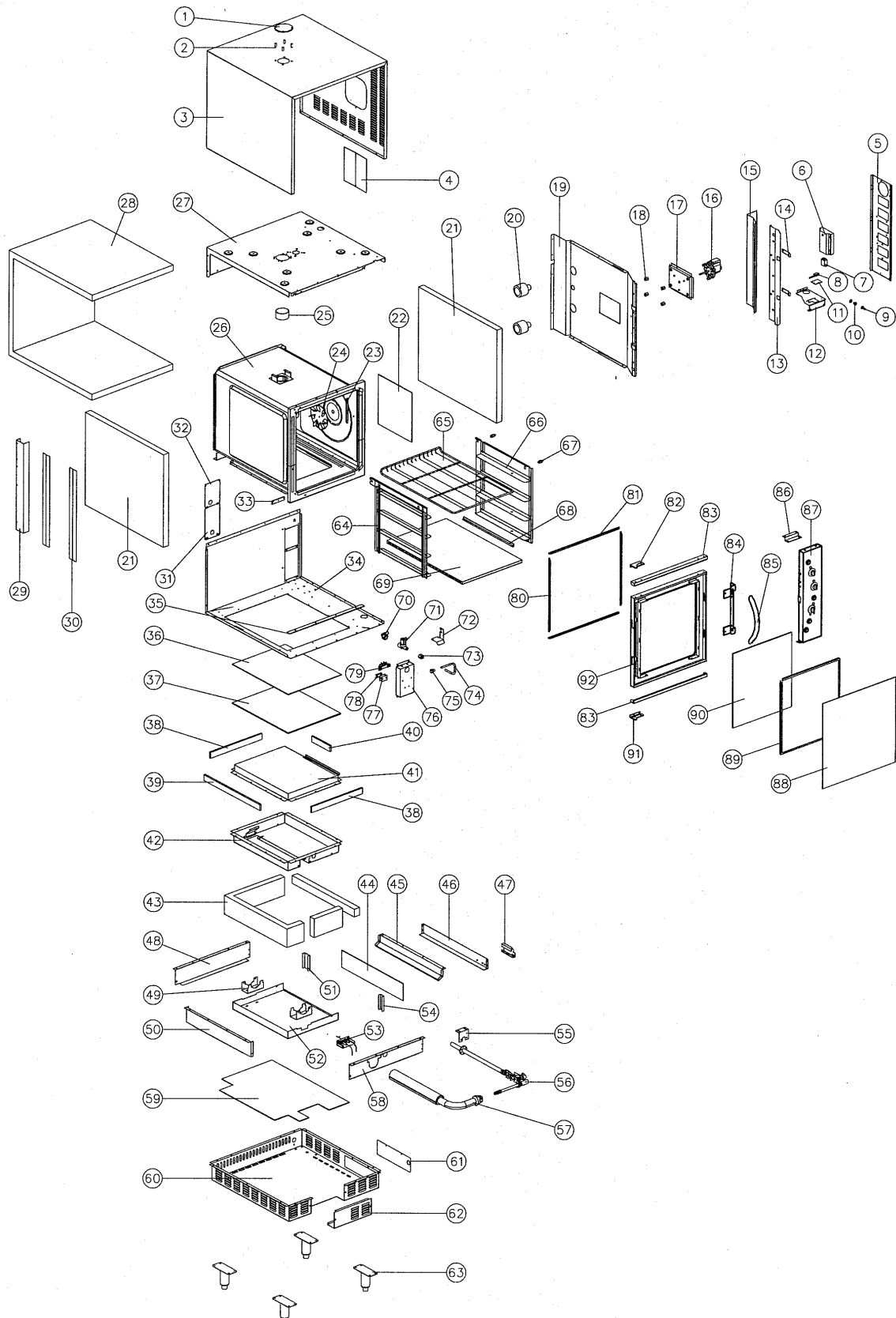


**STAINLESS STEEL DOOR OPTION
(PART NO SA1060)**



11. PARTS DIAGRAMS

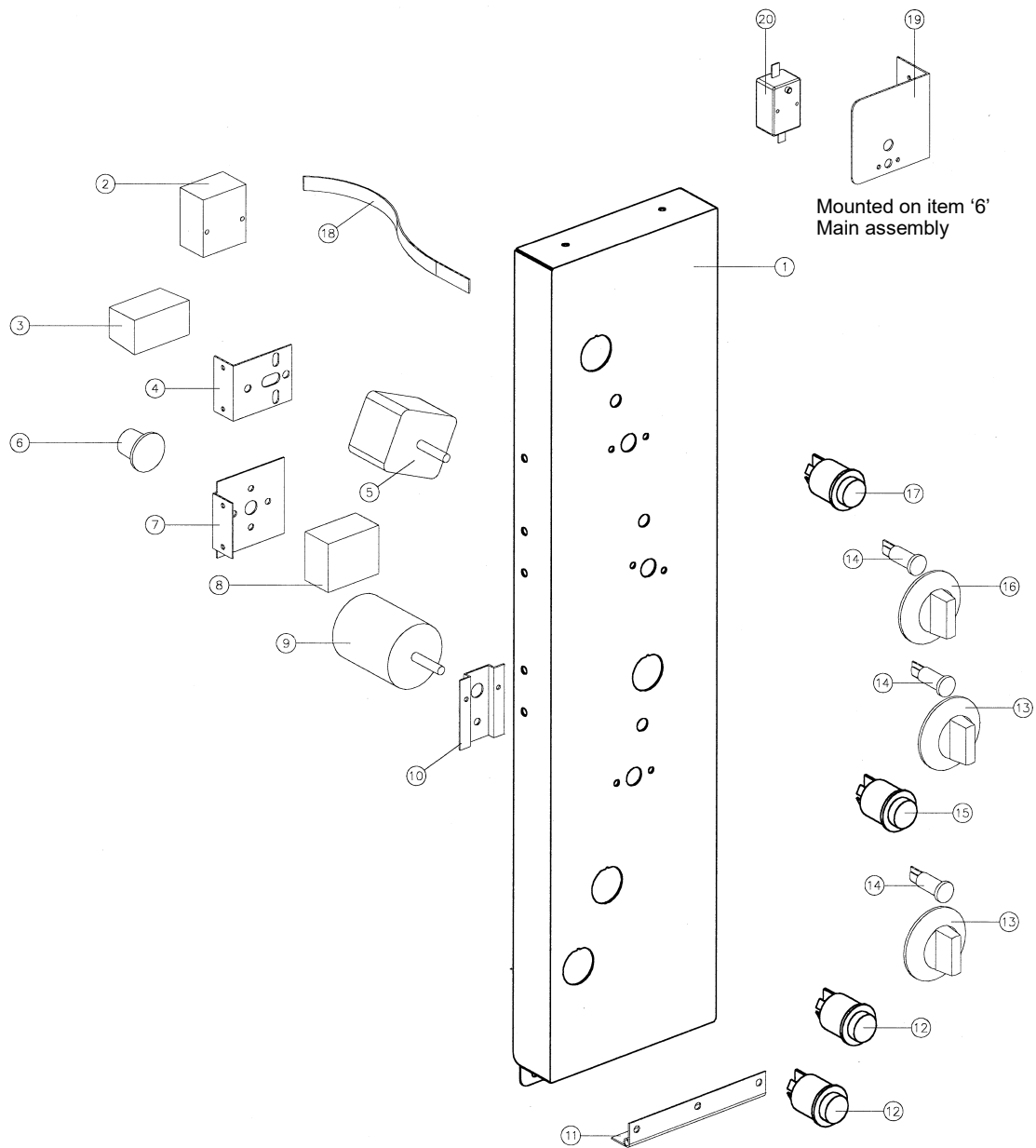
11.1 MAIN ASSEMBLY



Pos	Part No.	Description
1	016241	VENT HOOD PLATE
2	016245	HOOD SPACER
3	021449	WRAPPER
4	017872	INSPECTION PANEL
5	021173	FRONT VERTICAL
6	014983	IGNITION BOX - SCARICO (ALL MARKETS EXCEPT USA / CANADA / UK) (TO S/N 203926)
	018730	IGNITION BOX - TEKNIGAS (UK ONLY) (TO S/N 203926)
	023025	IGNITION BOX - SIT (ALL MARKETS EXCEPT USA/CANADA) (FROM S/N 203927)
	014982	IGN BOX - WHITE RODGERS (USA/CANADA) (TO S/N 203926)
	023024	IGN BOX - FENWAL (USA/CANADA) (FROM S/N 203927)
	023373	TRANSFORMER (USA/CANADA)
7	021534	RELAY -240V
	021535	RELAY -110V (USA/CANADA)
8	003004	MICROSWITCH
9	021637	MICROSWITCH BUTTON
10	013610	DOOR BUSH
11	013977	INSULATOR
12	021636	MICROSWITCH BRACKET
13	021467	CATCH PLATE - PLATED
14	013893	DOOR SPRING CATCH
15	023011	HEAT BLOCK PLATE
16	015821K	MOTOR - 110V (USA/CANADA)
	014672K	MOTOR - 240V
17	014694	MOTOR MOUNTING BOX
18	015947	MOTOR SPACER STUD
19	014727	SIDE INSULATION PANEL
20	013520	OVEN LIGHT ASSY - 240V
	019482	OVEN LIGHT ASSY - 110V (USA/CANADA)
	013521	LAMP 40W - 240V
	015825	LAMP 40W - 110V (USA/CANADA)
	003002	LIGHT GLASS
	003434	SILK GASKET
21	090424	FIBREGLASS 38mm
22	014941	INSULATION SNORKEL
23	013974	PHIAL GUARD
24	015598	FAN
25	016243	VENT TUBE
26	004728	OVEN ENAMELLED
27	021549	TOP INSULATION PANEL
28	090424	38mm FIBREGLASS
29	013986	REAR VERTICAL
30	013978	L.H INSULATION PLATE
31	015589	REAR SERVICE PANEL- BOTTOM
32	021619	REAR SERVICE PANEL - TOP
33	013951	HINGE PLATE BOTTOM
34	014950	BASE PANEL
35	013987	INSULATOR
36	014940	INSULATION - BURNER BOX
37	014700	INSULATION - BURNER BOX
38	014701	INSULATION - BURNER BOX FRONT/REAR
39	014702	INSULATION - BURNER BOX LONG
40	014703	INSULATION - BURNER BOX SHORT
41	015114	BURNER BOX REFLECTOR
42	004280	BURNER BOX BOTTOM
43	090424	FIBREGLASS 38mm
	076300	ALUMINIUM FOIL (NOT ILLUSTRATED)
44	014944	INSULATION - HEAT BOX INNER
45	014891	HEAT BOX R.H SIDE
46	014892	HEAT BOX R.H OUTER
47	015324	GAS VALVE BRACKET
48	014889	HEAT BOX REAR
49	015327	BURNER SUPPORT BRACKET
50	014890	HEAT BOX L.H SIDE

51	015537	INSULATION KEEP CHANNEL REAR
52	014728	BURNER BOX DEFLECTOR
53	022909	IGNITION ELECTRODE KIT COMPLETE ASSEMBLY
	015115	IGNITION ELECTRODE ASSEMBLY (TO S/N B47875) (SEE SECTION 11.3.3) - OBSOLETE: UPGRADE WITH SA1530
	018760	IGNITION ELECTRODE ASSEMBLY (UK ONLY TO S/N B47875) (SEE SECTION 11.3.4) - OBSOLETE: UPGRADE WITH SA1530
	SA1021	IGNITION ELECTRODE ASSEMBLY (ALL FROM S/N B47875 TO S/N 218595) (SEE SECTION 11.3.2) OBSOLETE: UPGRADE WITH SA1530
54	014977	INSULATION KEEP CHANNEL FRONT
55	004352	PIPE MOUNTING BRACKET
56	015090	GAS PIPING ASSEMBLY (SEE SECTION 11.4)
57	004312	BURNER
58	014888	HEAT BOX FRONT
59	014943	INSULATION - HEAT BOX
60	004713	BOTTOM PANEL
61	004733	SIDE SERVICE PANEL
62	004714	INJECTOR ACCESS PANEL
63	015274	LEG ASSEMBLY 6"
	015275	LEG TUBE WA - PLATED
	010990	ADJUSTABLE FOOT
64	015575	SIDE RACK L.H
65	015168	OVEN RACK
66	015656	FAN BAFFLE
67	014031	OVEN BAFFLE STUD
	019367	OVEN BAFFLE STUD (UK ONLY)
68	015930	BAFFLE LOCATING BRACKET
69	004397	RADIATION BAFFLE ENAMELLED
70	021526	WATER INLET ELBOW
	021527	WATER INLET WASHER
71	020851	WATER SOLENOID - 240V
	021617	WATER SOLENOID - 110V (USA/CANADA)
72	021618	WATER SOLENOID BRACKET
73	020869	CONNECTOR - 3/8"F x 1/4" COMPRESSION
74	021058	WATER TUBE
75	021057	SPRAY NOZZLE ASSEMBLY
76	015591	JUNCTION BOX
77	002441	INSULATOR
78	002138	CABLE CLAMP
79	014185	MAINS TERMINAL BLOCK
80	021520	OVEN SEAL ASSEMBLY - VERTICAL
	021522	SIDE SEAL - 0.55M
81	021517	OVEN SEAL ASSEMBLY - HORIZONTAL
	021519	TOP SEAL - 0.52M
82	020082	TOP HINGE ASSEMBLY
	017905	BUSH
83	021532	DOOR TRIM
84	021466	DOOR HANDLE BRACKET PLATED
85	021468	HANDLE
86	021441	CONTROL PANEL MOUNTING BRACKET
87	-----	CONTROL ASSEMBLY (SEE SECTION 11.2)
88	021443	DOOR OUTER GLASS
	090225	SILICONE EXTRUSION - 1.2M
89	004451	GLASS CLAMP ANGLE PAINTED
90	002340	DOOR INNER GLASS
	090201	SILICONE EXTRUSION - 1.74M
91	020083	BOTTOM HINGE ASSEMBLY
	017905	BUSH
92	004725	DOOR INNER

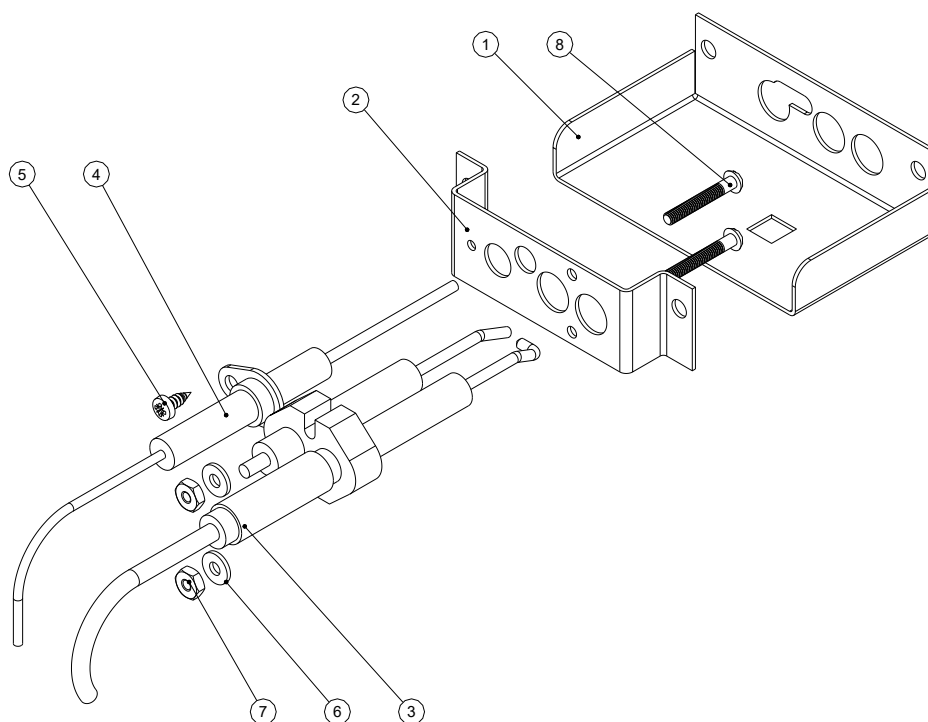
11.2 CONTROL PANEL ASSEMBLY



Pos	Part No.	Description
1	004723	CONTROL PANEL °C (except UK)
	004730	CONTROL PANEL °F
	004804	CONTROL PANEL °C (UK only)
2	011987	THERMOSTAT 50-320 °C
3	011794	BUZZER (240V)
	015822	BUZZER (110V USA/CANADA ONLY)
4	021537	BUZZER MOUNTING BRACKET
5	011760	TIMER - 1 Hr
6	018224	HOLD THERMOSTAT KNOB
7	021538	HOLD THERMOSTAT BRACKET (AFFIX 018209 LABEL)
8	018223	HOLD THERMOSTAT
9	011419	TIMER - 3 Hr (240V 50 Hz)
	011983	TIMER - 3 Hr (240V 60 Hz)
	015823	TIMER - 3 Hr (110V USA/CANADA ONLY)
10	021442	TIMER MOUNTING PANEL
11	016579	HINGE
12	021474	LIGHT/STEAM SWITCH
13	020823	TIMER KNOBS
14	020849	INDICATOR LIGHT (240V)
	023857	INDICATOR LIGHT (110V)
15	021476	SWITCH - ROAST 'N' HOLD (240V)
	021515	SWITCH - ROAST 'N' HOLD (110V)
16	021472	THERMOSTAT KNOB
17	021473	POWER SWITCH (240V)
	021514	POWER SWITCH (110V)
18	016602	RETAINING STRAP
19	019380	OVER-TEMP BRACKET (UK ONLY)
20	019369K	OVER-TEMPERATURE THERMOSTAT KIT (UK ONLY)

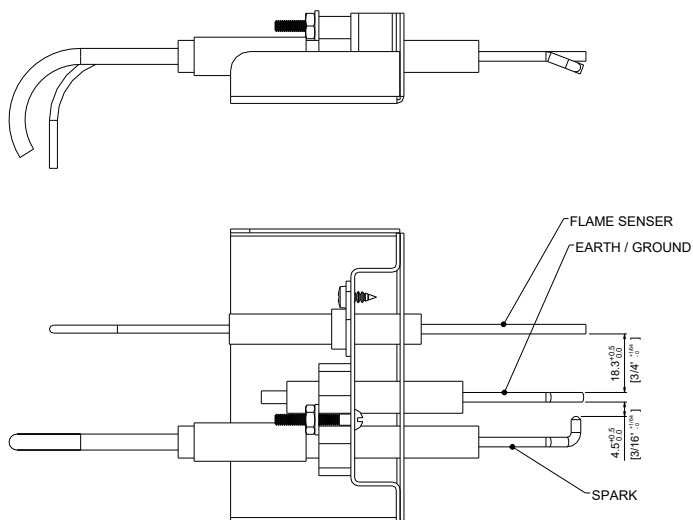
11.3.1 IGNITION ELECTRODE ASSEMBLY - FROM SERIAL NO 218596

For units pre serial no 218596 refer section 11.3.2.



Pos	Part No.	Description
1	024105	IGNITION ELECTRODE BRACKET
2	024106	ELECTRODE MOUNTING BRACKET
3	024127	SPARK ELECTRODE
4	022902	FLAME ELECTRODE
5	041022	SCREW
6	045011	WASHER FLAT
7	044001	NUT
8	041218	SCREW
	022909	IGNITION ELECTRODE KIT COMPLETE ASSEMBLY (UPGRADE KIT)

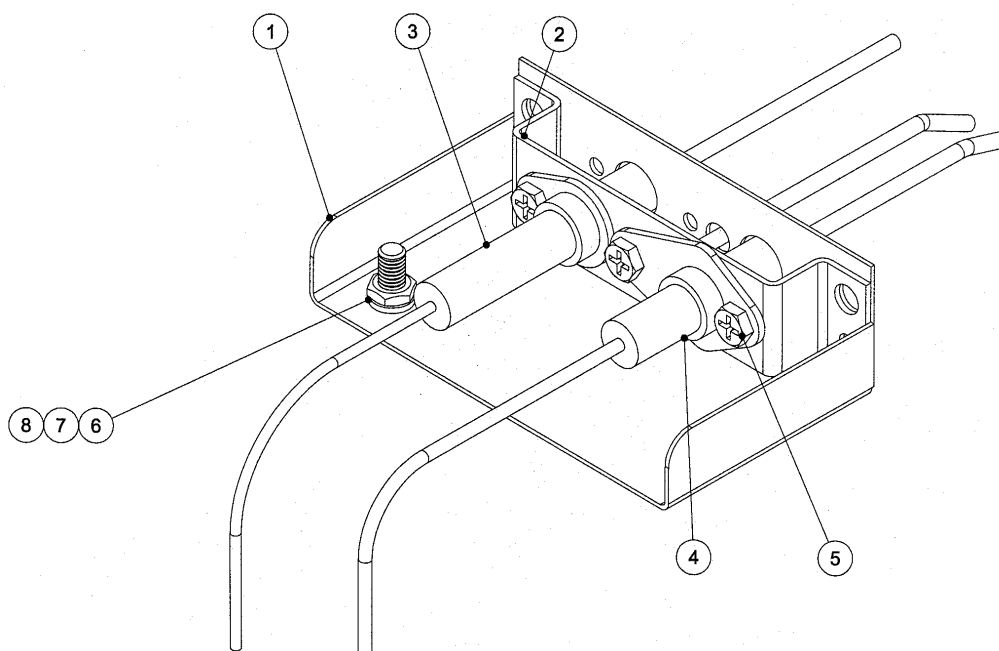
ELECTRODE SETTINGS



11.3.2 IGNITION ELECTRODE ASSEMBLY - FROM S/N 47875 TO 218595

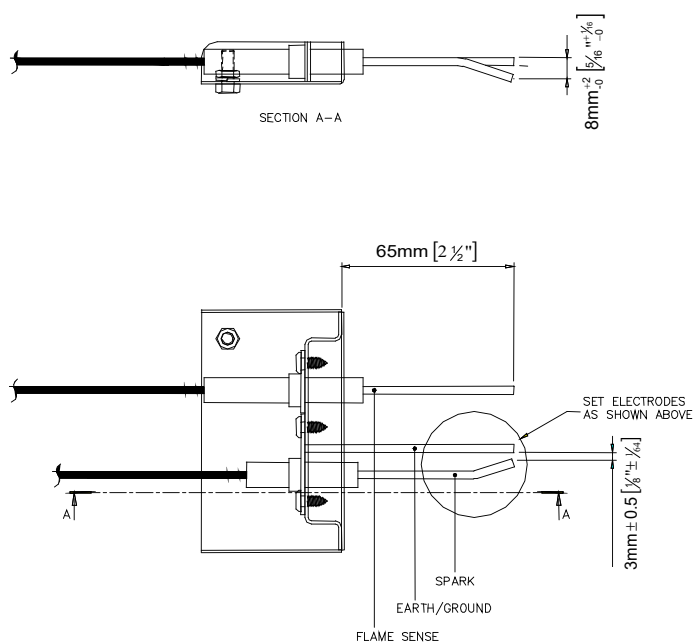
For units pre serial no 47875 refer section 11.3.3 / 11.3.4.

For units after serial number 218595 refer section 11.3.1



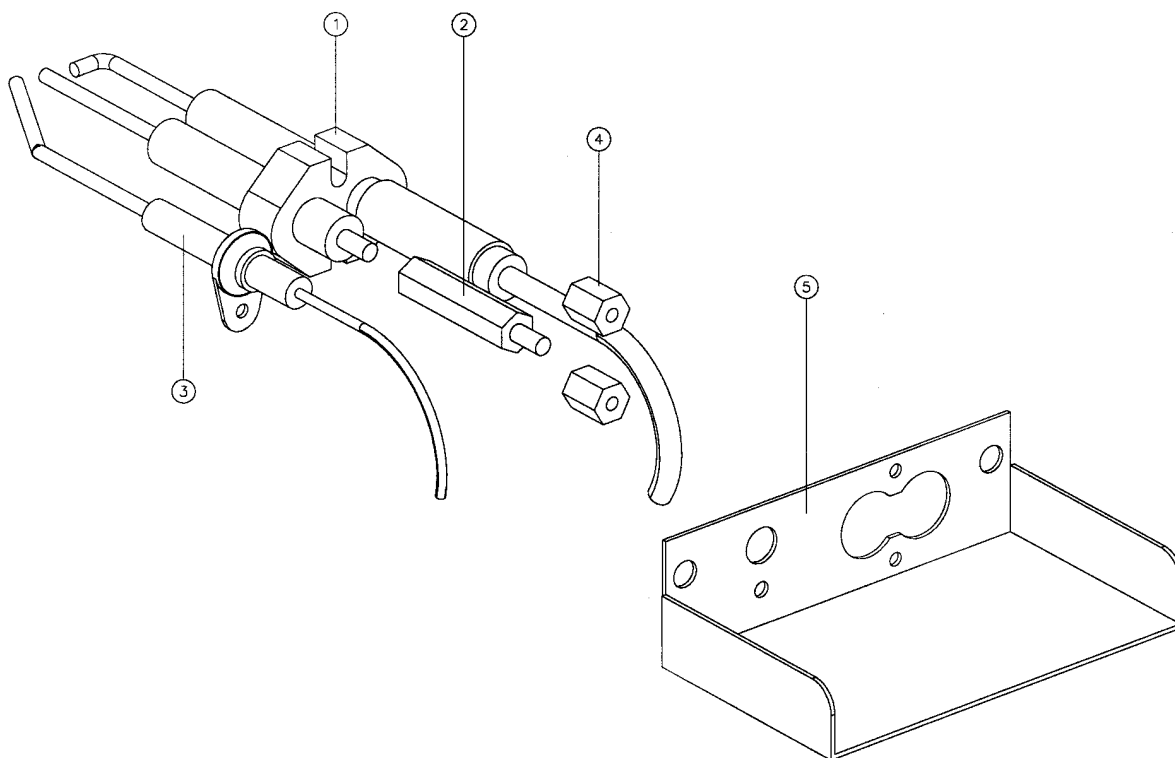
Pos	Part No.	Description
	SA 1021	IGNITION ELECTRODE ASSEMBLY (COMPLETE) - OBSOLETE - REPLACE WITH 022909 ELECTRODE ASSEMBLY UPGRADE KIT
1	022903	IGNITION ELECTRODE BRACKET
2	023221	ELECTRODE MOUNTING BRACKET
3	022902	FLAME ELECTRODE
4	022901	SPARK ELECTRODE
5	041044	SCREW
6	041600	SCREW
7	045410	WASHER
8	044010	NUT

ELECTRODE SETTINGS



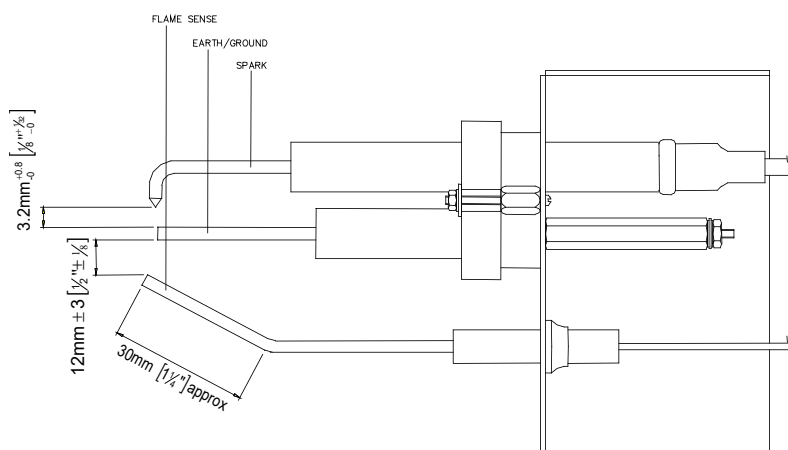
11.3.3 IGNITION ELECTRODE ASSEMBLY (NOT UK) - TO SERIAL NO 47875

For units after serial number 47875 refer section 11.3.2



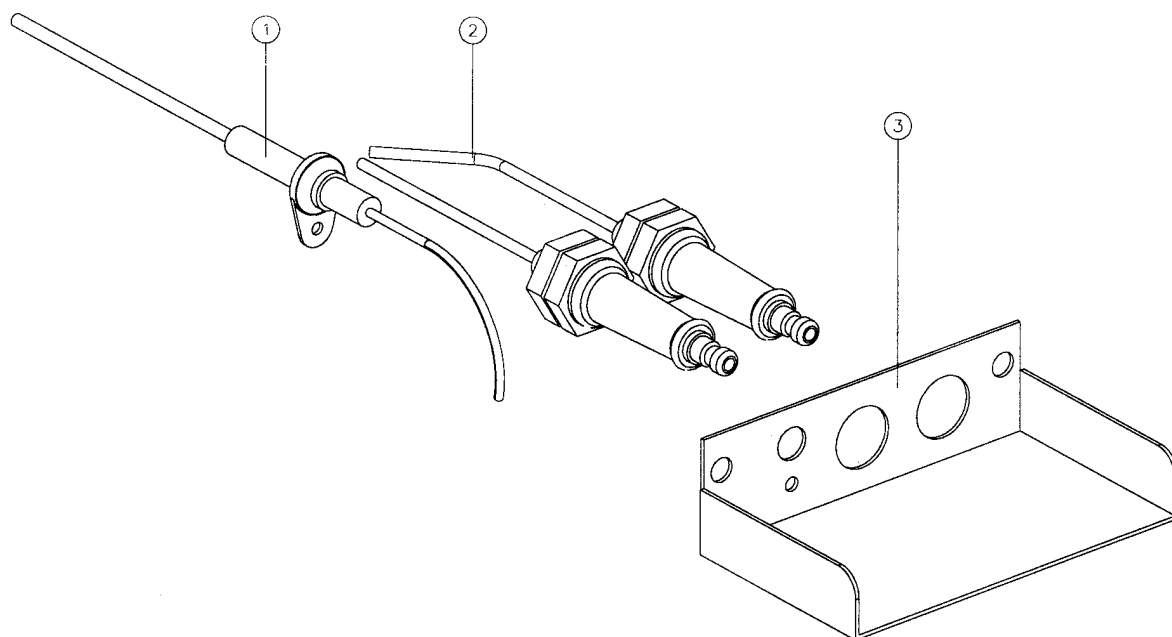
Pos	Part No.	Description
	015115	IGNITION ELECTRODE ASSEMBLY (COMPLETE) - OBSOLETE - REPLACE WITH 022909 ELECTRODE ASSEMBLY UPGRADE KIT
1	015316	IGNITION SPARK ROD
2	016051	ELECTRODE EXTENSION
3	015315	FLAME SENSOR - USE 022902 FLAME SENSOR
4	016050	ELECTRODE SPACER
5	015329	IGNITION ELECTRODE BRACKET
6	090127	VIDAFLEX SLEEVING

ELECTRODE SETTINGS



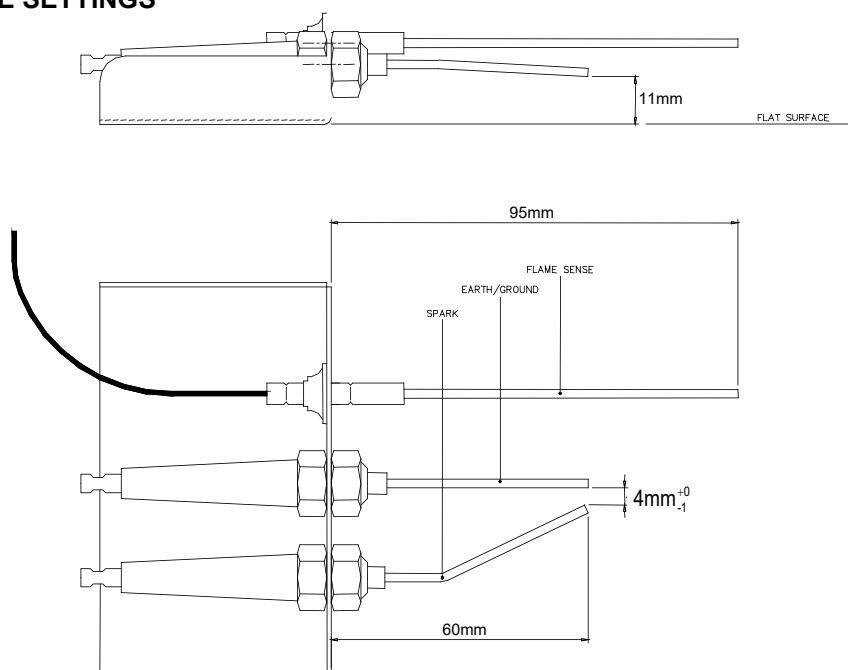
11.3.4 IGNITION ELECTRODE ASSEMBLY (UK ONLY) - TO SERIAL NO 47875

For units after serial number 47875 refer section 11.3.2



Pos	Part No.	Description
	018760	IGNITION ELECTRODE ASSEMBLY (COMPLETE) - OBSOLETE - REPLACE WITH 022909 ELECTRODE ASSEMBLY UPGRADE KIT
1	015315	FLAME SENSOR - USE 022902 FLAME SENSOR
2	018732	IGNITION ELECTRODE
3	018759	IGNITION ELECTRODE BRACKET

ELECTRODE SETTINGS





Pos	Part No.	Description
1	019370	GAS CONTROL VALVE (240V ONLY)
	015626K	GAS CONTROL VALVE (110V USA/CANADA ONLY)
	241775	24V SOLENOID COIL (110v UNITS ONLY) (Part of Item 1 above)
	015541	GAS CONTROL VALVE KIT (240V - REPLACES VALVE TYPE 25M02 WITH 19370 - GAS VALVE TYPE 25M42)
	019338	ELECTRICAL CONNECTOR (NOT ILLUSTRATED)
2	015542	CONNECTOR 3/8" BSP x 3/8" BSP
3	014989	TEE 3/8" BSP
4	011601	JET HOLDER 3/8" BSP x 1/8" BSP
5	019371	PRESSURE TEST POINT
6	013837	CONNECTOR MALE 1/2" TUBE x 3/8" BSP
7	013857	OLIVE 1/2"
8	013858	COMPRESSION NUT 1/2"
9	015308	INJECTOR TUBE
10	014961	CONNECTOR 1/2" TUBE x 3/8" BSP FEMALE
11	032170	INJECTOR Ø1.70 mm - LPG/PROPANE GAS
	032155	INJECTOR Ø1.55 mm - G31 PROPANE GAS (UK ONLY)
	032270	INJECTOR Ø2.70 mm - NATURAL GAS
	032260	INJECTOR Ø2.60 mm - G20 NATURAL GAS (UK ONLY)
12	015313	MACK UNION 3/8" BSP
13	015309	ADAPTOR 3/8" BSP MALE x 1/2" BSP FEMALE
14	004383	SUPPLY PIPE
15	015176	ELBOW 1/2" BSP FEMALE
16	025076	BALL VALVE 3/8" MALE x 1/2" BSP FEMALE
	015310	BALL VALVE 3/8" BSP (USA / CANADA ONLY)
17	015314	ADAPTOR 1/2" BSP x 1/2" NPT FEMALE
18	011601	JET HOLDER 3/8" BSP x 1/8" BSP
19	011740	BACK NUT 1/8" BSP
20	018108	TEE 3/8" BSP MALE/FEMALE (UK ONLY)
	015910	CONVERSION KIT - NATURAL GAS TO LPG
	019379	CONVERSION KIT - NATURAL GAS TO PROPANE (UK ONLY)
	016403	CONVERSION KIT - LPG TO NATURAL GAS
	019378	CONVERSION KIT - PROPANE TO NATURAL GAS (UK ONLY)