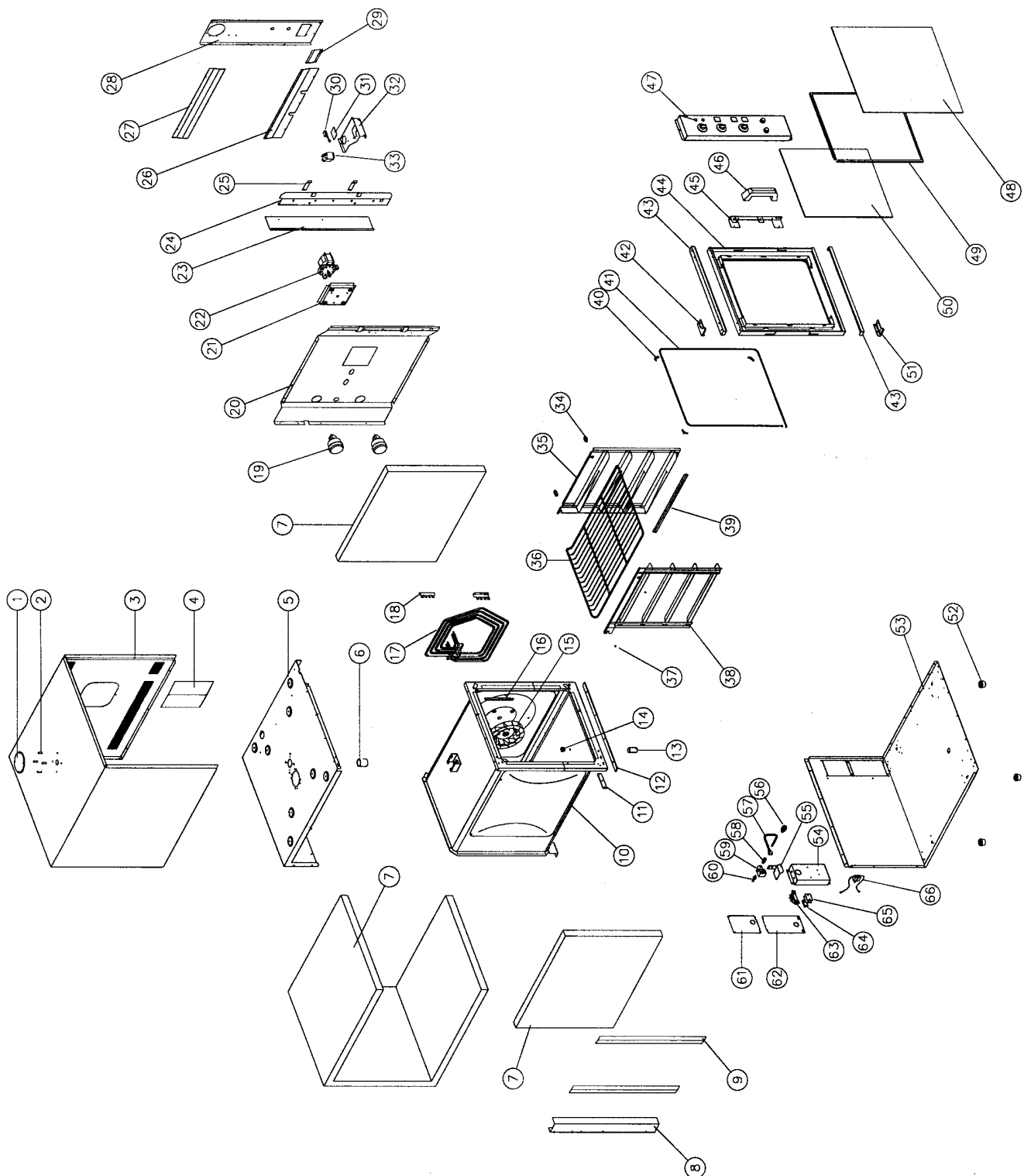


E32 SPARE PARTS LIST



Page 1/3
2.1 MAIN ASSEMBLY



E32 SPARE PARTS LIST



Page2/3

2.1 MAIN ASSEMBLY

Pos	Part No.	Description
1	016241	VENT HOOD PLATE
2	016245	HOOD SPACER
3	013969	WRAPPER
4	017872	INSPECTION PANEL
5	013968	TOP INSULATION PANEL
6	014954	VENT TUBE
7	-----	INSULATION
8	013986	REAR VERTICAL
9	013978	L.H INSULATION PLATE
10	004053	OVEN INNER
11	013951	HINGE PLATE
12	013987	INSULATOR
13	013941	DRAIN TUBE
14	002247	DRAIN PLUG
15	015597	FAN
16	013974	PHIAL GUARD
17	015360	ELEMENT ASSEMBLY (208 - 220V)
	015363	ELEMENT ASSEMBLY (240V)
18	015581	ELEMENT BRACKET
19	013520	OVEN LIGHT ASSEMBLY
	003002	LIGHT GLASS
	003434	SILK GASKET
	013521	LAMP 40W (240V)
20	013967	SIDE INSULATION PANEL
21	013965	MOTOR MOUNTING PLATE
22	013431	MOTOR
23	013976	HEAT BLOCK PLATE
24	013972	CATCH PLATE
25	013893	DOOR SPRING CATCH
26	014262	BOTTOM VENT BAFFLE - LONG (USA/CANADA ONLY)
27	014264	TOP VENT BAFFLE (USA/CANADA ONLY)
28	013975	FRONT VERTICAL
29	014263	BOTTOM VENT BAFFLE - SHORT (USA/CANADA ONLY)
30	013996	MICROSWITCH (UP TO S/N 27916)
	019491	MICROSWITCH (FROM S/N 27916)
31	013977	INSULATOR
32	013985	MICRO SWITCH BRACKET
33	017297	RELAY
	018954	RELAY - SOLID STATE (UK ONLY)
	018955	HEAT SINK (UK ONLY)
34	014031	OVEN BAFFLE STUD
	019367	OVEN BAFFLE STUD (UK ONLY)
35	015656	FAN BAFFLE
36	015168	OVEN RACK
37	003397	SPACER

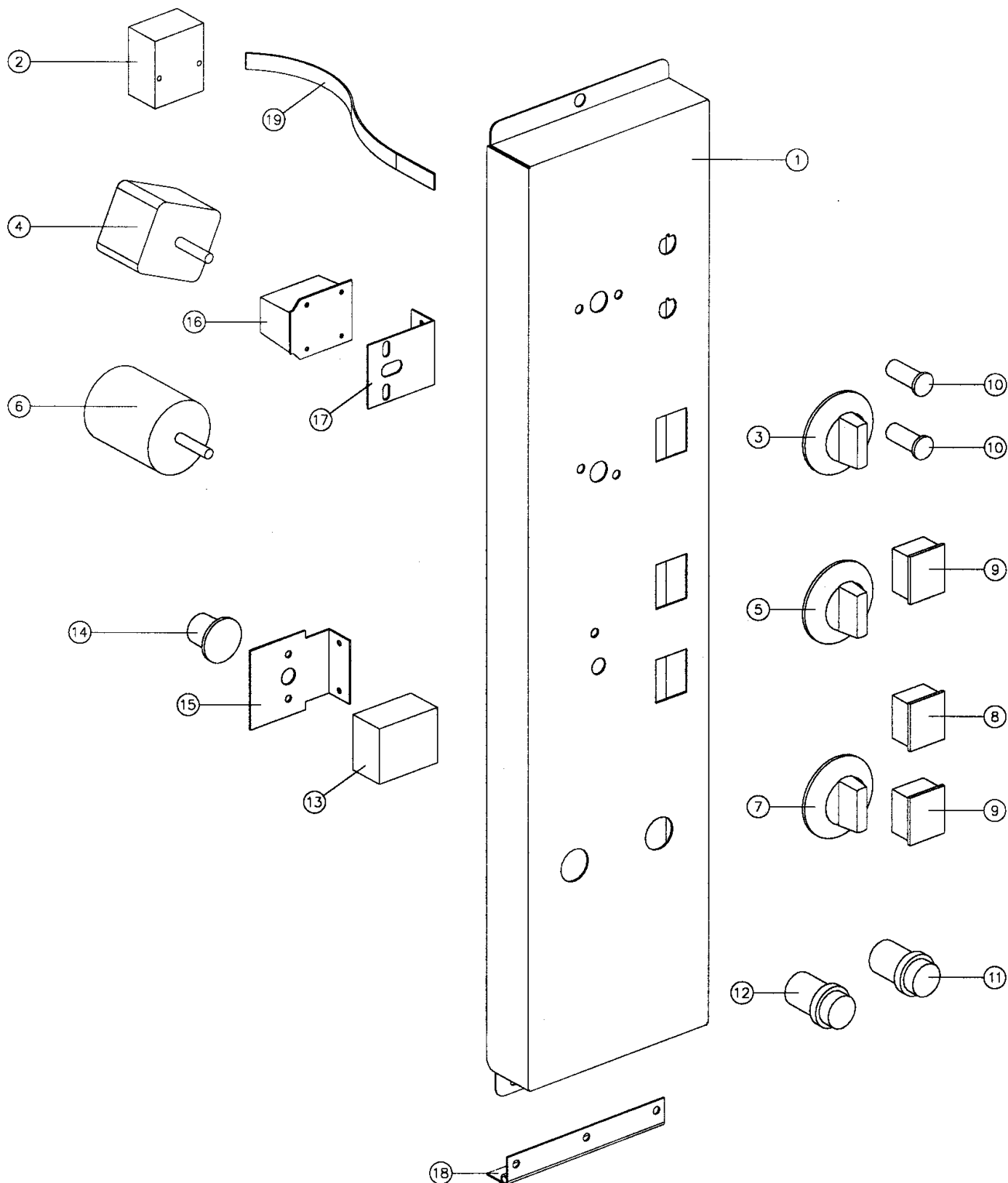
E32 SPARE PARTS LIST



Page3/3

2.1 MAIN ASSEMBLY

Pos	Part No.	Description
38	015575	SIDE RACK LIGHT
39	015930	BAFFLE LOCATING BRACKET
40	018033	SEAL RETAINING CLIP (USED WITH 018032 / 018969 SEALS)
41	018969	OVEN SEAL (1 PIECE - FROM S/N 25263)
	018032	OVEN SEAL (1 PIECE CONTINUOUS - FROM JUNE 1994 TO S/N 25262) (NOT ILLUSTRATED) (SEAL KIT UPGRADE TO 018969 AVAILABLE)
	014226	OVEN SEAL - HORIZONTAL (2 PER - TO JUNE 1994)(NOT ILLUSTRATED)
	014227	OVEN SEAL - VERTICAL (2 PER - TO JUNE 1994)(NOT ILLUSTRATED)
42	020082	TOP PIVOT BRACKET
	017905	BUSH
43	015595	DOOR TRIM
44	004353	DOOR INNER
45	015639	DOOR HANDLE BRACKET
46	013892	HANDLE
47	-----	CONTROL ASSEMBLY (SEE SECTION 2.2)
48	015349	DOOR OUTER GLASS
49	004451	GLASS CLAMP ANGLE
50	002340	DOOR INNER GLASS
51	020083	BOTTOM PIVOT BRACKET
	017905	BUSH
52	013908	FOOT ASSEMBLY - 1" (25 mm)
	013048	LEG - 4" (100mm)
53	013966	BASE PANEL
54	015591	JUNCTION BOX
55	015588	WATER SOLENOID BRACKET
56	015653	SPRAY NOZZLE ASSEMBLY
57	015592	WATER TUBE
58	012753	CONNECTOR
59	012781	WATER SOLENOID
60	012782	HOSE CONNECTOR
61	015590	REAR SERVICE PANEL - TOP
62	015589	REAR SERVICE PANEL - BOTTOM
63	014185	MAINS TERMINAL BLOCK
64	002138	CABLE CLAMP
65	002441	INSULATOR
66	018959	CAPACITOR ASSEMBLY (UK ONLY)



Pos	Part No.	Description
1	004052	CONTROL PANEL
2	011987	THERMOSTAT 50-320 °C
3	015563	THERMOSTAT KNOB 50-320 °C
4	011760	TIMER - 1 Hr
5	015560	TIMER KNOB - 1 Hr
6	011419	TIMER - 3 Hr (240V 50 Hz)
	011983	TIMER - 3 Hr (240V 60 Hz)
7	015567	TIMER KNOB - 3 Hr
8	013542	INDICATOR LIGHT
9	013543	START SWITCH
10	013528	PILOT LIGHT
11	012895	WATER SWITCH (BLUE BUTTON)
12	013891	LIGHT SWITCH (ORANGE BUTTON)
13	018223	HOLD THERMOSTAT
14	017859	HOLD THERMOSTAT BRACKET(AFFIX 018209 LABEL)
15	018224	HOLD THERMOSTAT KNOB
16	011794	BUZZER
17	014032	BUZZER MOUNTING BRACKET
18	016579	HINGE
19	016602	RETAINING STRAP