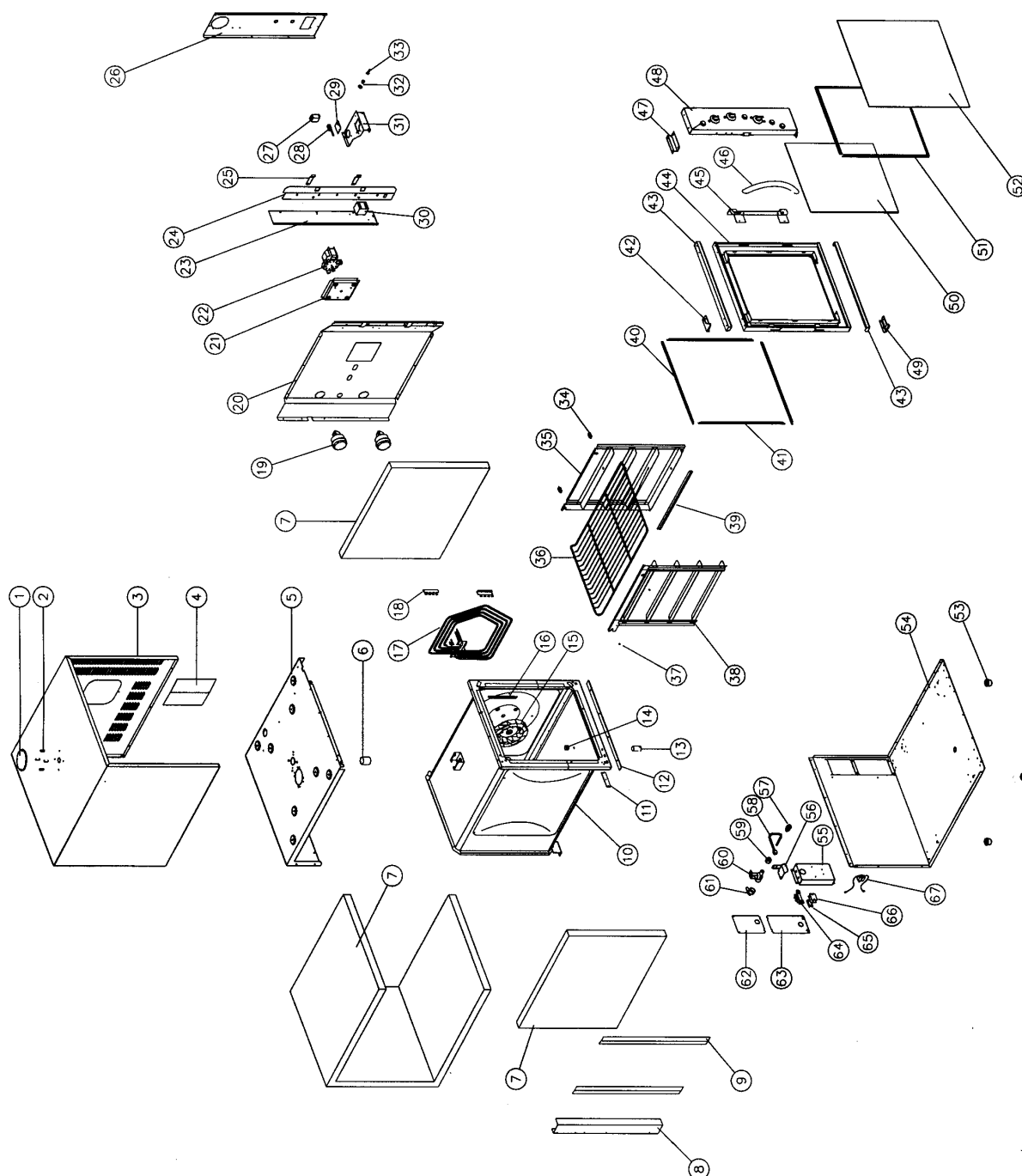


11. PARTS DIAGRAMS

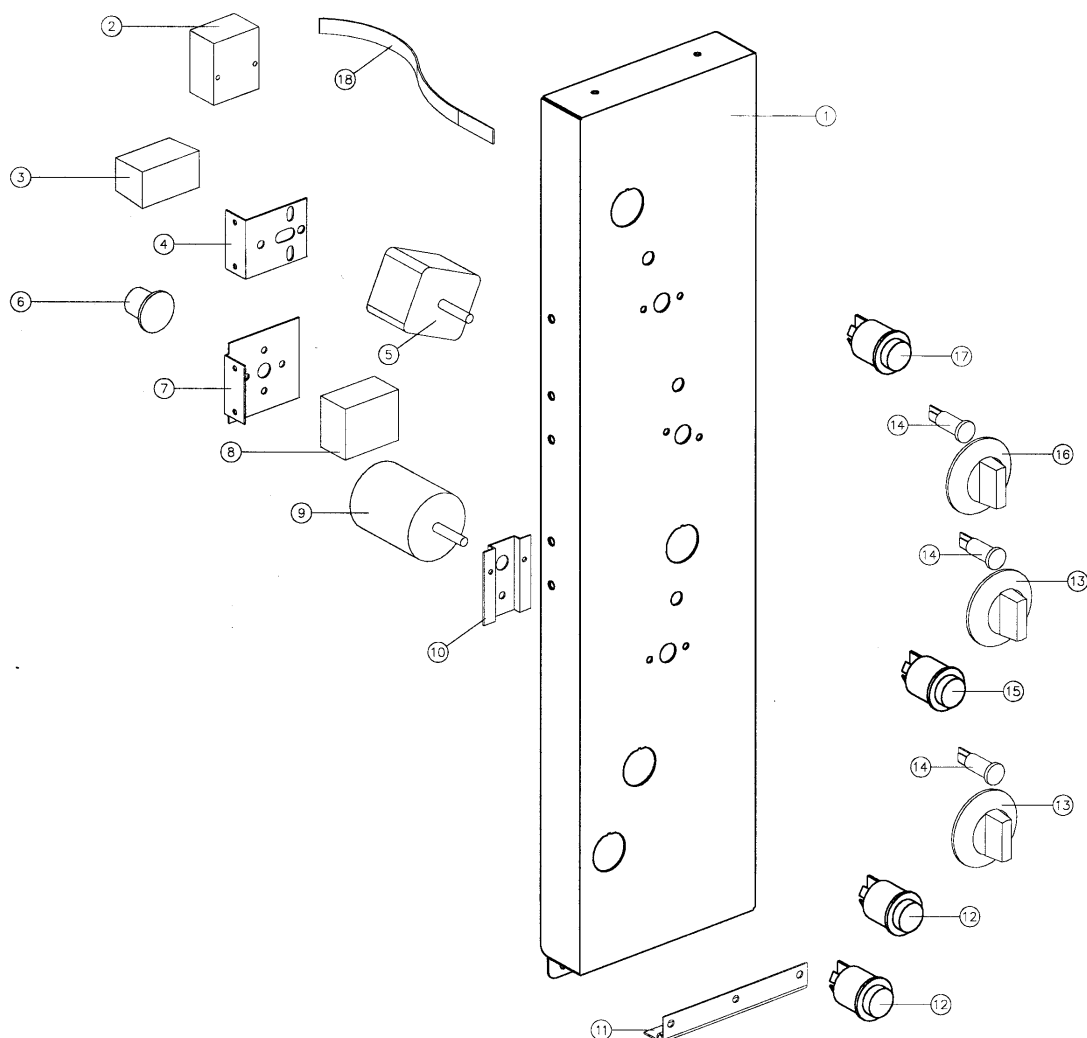
11.1 MAIN ASSEMBLY



Pos	Part No.	Description
1	016241	VENT HOOD PLATE
2	016245	HOOD SPACER
3	021448	WRAPPER
4	017872	INSPECTION PANEL
5	021549	TOP INSULATION PANEL
6	014954	VENT TUBE
7	090424	FIBREGLASS - 38mm
8	013986	REAR VERTICAL
9	013978	LH INSULATION PLATE
10	004727	OVEN - ENAMELLED
11	013951	HINGE PLATE BOTTOM
12	013987	INSULATOR OVEN
13	013941	DRAIN TUBE (to 12/98)
14	002247	DRAIN PLUG (to 12/98)
15	015597	FAN
16	013974	PHIAL GUARD
17	015360	ELEMENT ASSEMBLY 220V
	015363	ELEMENT ASSEMBLY 240V
18	015581	ELEMENT BRACKET
19	013520	OVEN LIGHT ASSY
	003434	SILK GASKET
	013521	LAMP - 40W
	003002	LIGHT GLASS
20	013967	SIDE INSULATION PANEL
21	013965	MOTOR MOUNTING PLATE
22	013431K	MOTOR
23	021172	HEAT BLOCK PLATE
24	021467	CATCH PLATE
25	013893	DOOR SPRING CATCH
26	021173	FRONT VERTICAL
27	021534	RELAY
28	003004	MICROSWITCH
29	013977	INSULATOR
30	015966	CONTACTOR
	022993	CONTACTOR MOUNTING BRACKET
	022994	CONTACTOR UPGRADE KIT (TO S/N 47670)
31	021636	MICROSWITCH BRACKET
32	013610	DOOR BUSH
33	021637	MICROSWITCH BUTTON
34	014031	OVEN BAFFLE STUD
35	015656	FAN BAFFLE
36	015168	OVEN RACK
37	041405	SCREW
	003397	SPACER
38	015575	SIDE RACK LH
39	015930	BAFFLE LOCATING BRACKET
40	021517	HORIZONTAL SEAL ASSEMBLY
	021519	HORIZONTAL SEAL - 0.52M
41	021520	VERTICAL OVEN SEAL ASSEMBLY
	021522	VERTICAL SEAL - 0.55M
42	020082	TOP HINGE ASSEMBLY
	017905	BUSH
43	021532	DOOR TRIM
44	004725	DOOR INNER ENAMELLED
45	021466	DOOR HANDLE BRACKET
46	021468	HANDLE
47	021441	CONTROL PANEL MOUNTING BRACKET

48	-----	CONTROL PANEL (REFER SECTION 11.2)
49	020083	BOTTOM HINGE ASSEMBLY
	017905	BUSH
50	002340	DOOR INNER GLASS
	090201	SILICONE EXTRUSION - 1.74M (NOT ILLUSTRATED)
51	004451	GLASS CLAMP ANGLE PAINTED
52	021443	DOOR OUTER GLASS
	090225	SILICONE EXTRUSION - 1.2M (NOT ILLUSTRATED)
53	013908	FOOT ASSEMBLY $\frac{3}{8}$ "
	013048	LEG - 4" HI-TEMP PLASTIC (NOT ILLUSTRATED)
54	013966	BASE PANEL
55	015591	JUNCTION BOX
56	021618	WATER SOLENOID BRACKET
57	021057	SPRAY NOZZLE ASSEMBLY
58	021058	WATER TUBE W.A
59	020869	CONNECTOR - $\frac{3}{8}$ "F x $\frac{1}{4}$ " COMPRESSION
60	020851	SOLENOID
61	021526	WATER INLET ELBOW
	021527	WATER INLET WASHER
62	021619	REAR SERVICE PANEL - TOP
63	015589	REAR SERVICE PANEL - BOTTOM
64	014185	MAINS TERMINAL BLOCK
65	002138	CABLE CLAMP
66	002441	INSULATOR
67	018959	CAPACITOR ASSEMBLY (UK ONLY)

11.2 CONTROL PANEL ASSEMBLY



Pos	Part No.	Description
1	004723	CONTROL PANEL - BAKBAR °C
	004804	CONTROL PANEL - BLUE SEAL °C
	004730	CONTROL PANEL - MOFFAT °F
2	011987	THERMOSTAT 50 - 320°C
3	011794	BUZZER
4	021537	BUZZER MOUNTING BRACKET
5	011760	TIMER – 1 HOUR
6	018224	HOLD STAT KNOB
7	021538	HOLD STAT BRACKET (AFFIX 018209 LABEL)
8	018223	HOLD STAT - ADJUSTABLE
9	011419	3 HOUR TIMER 50Hz
	011983	3 HOUR TIMER 60Hz
10	021442	TIMER MOUNTING PANEL
11	016579	HINGE
12	021474	LIGHT / STEAM SWITCH
13	020823	TIMER KNOBS
14	020849	PILOT LIGHT
15	021476	ROAST 'N' HOLD SWITCH
16	021472	THERMOSTAT KNOB
17	021473	SWITCH - POWER
18	016602	RETAINING STRAP