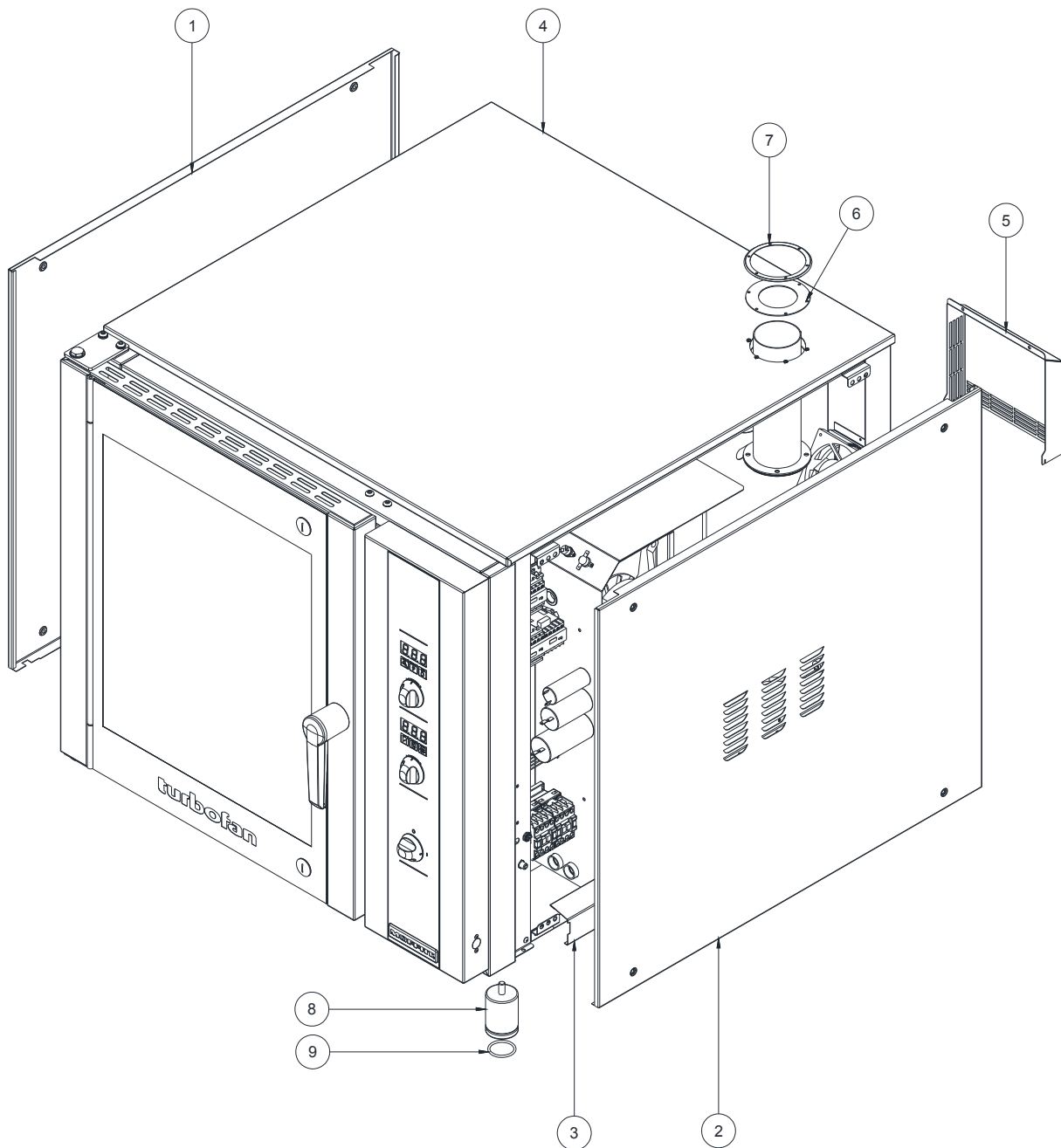


## 9 Exploded Parts Listings

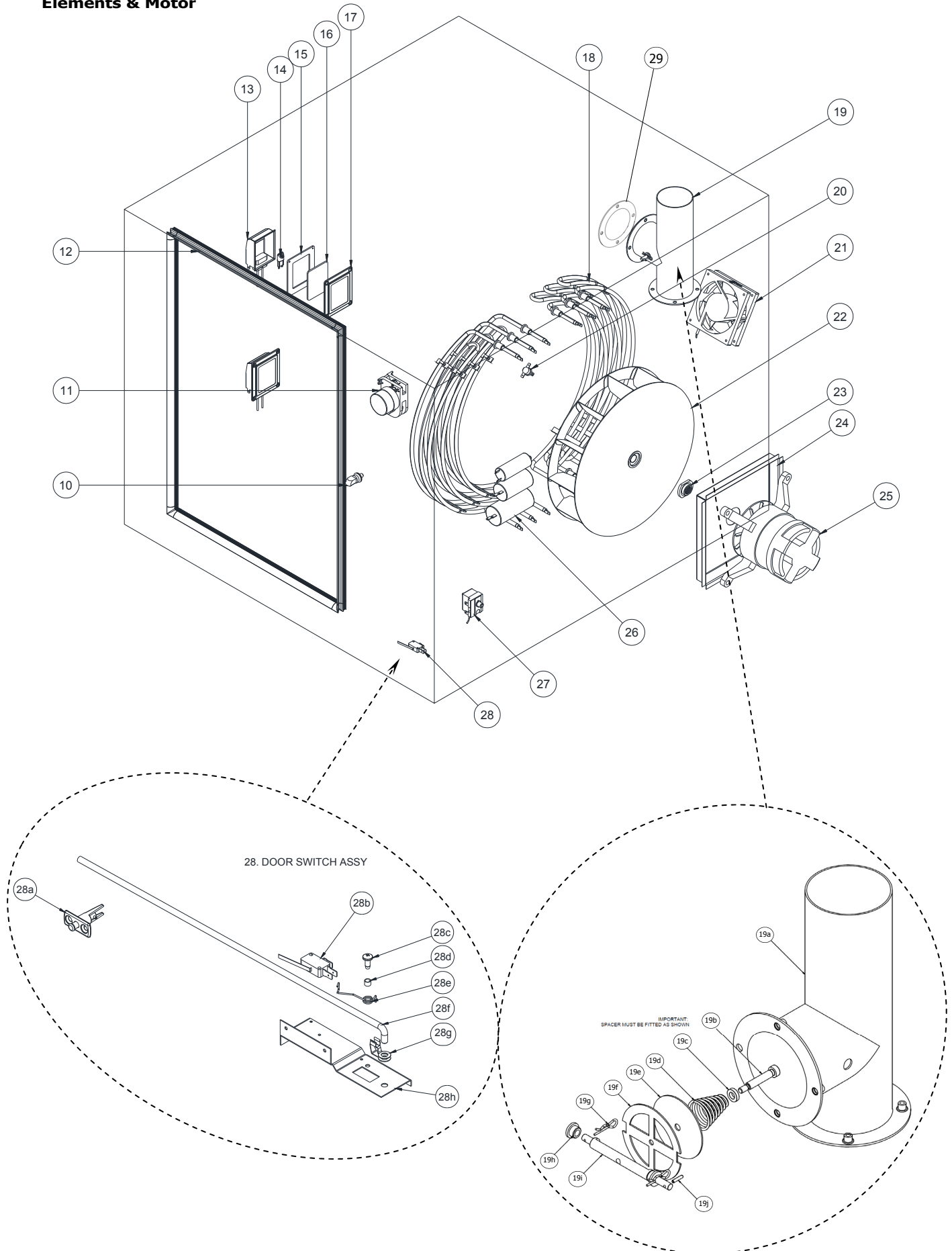
### Outer Assembly



ITEM	PART No.	DESCRIPTION	*RPL
1	239615	SIDE COVER LH 30"	D
	239614	SIDE COVER LH 26"	D
2	239439	SIDE COVER RH 30"	D
	239438	SIDE COVER RH 26"	D
3	240008	SIDE PANEL BAFFLE	D
4	239441	TOP COVER 30"	D
	239440	TOP COVER 26"	D
5	239862	COOLING FAN COVER	D
6	022425	VENT SEAL	C
7	022426	VENT SEAL FLANGE PLATE	
8	232379	ADJUSTABLE LEG 73 - 80mm	D
9	232380	FOOT O-RING	C

* Recommended Parts Level	
RPL	Number of Units In-Service.
A	1-5
A+B	5-10
A+B+C	10-50
A+B+C+D	50+

## Elements & Motor



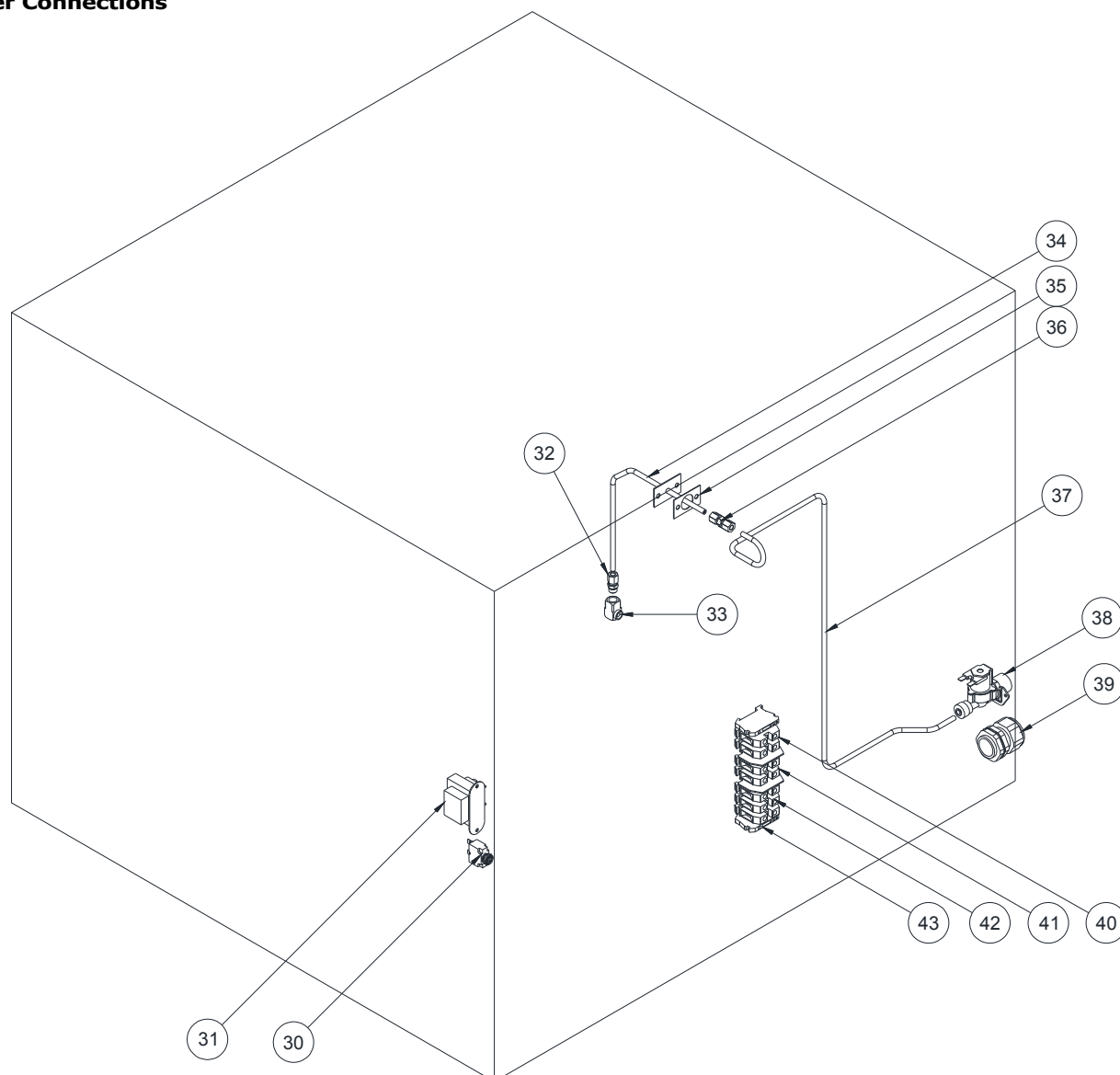
## 9 Exploded Parts Listings

### Elements & Motor - Parts List

ITEM	PART No.	DESCRIPTION	*RPL
10	231804	LOCKING DOG	C
11	239581	VENT ACTUATOR	
12	231438	DOOR SEAL	A
13	232108	LAMP HOLDER G9 HALOGEN	B
14	231814	LAMP G9/25W 230V HALOGEN	A
15	021354	GASKET	A
16	021352	GLASS LENS	A
17	021353	SUPPORT FRAME.	A
18	020762K	OVEN ELEMENT KIT 2000W 240V.	B
	020763K	OVEN ELEMENT KIT 2000W 220V.	B
	239341	<i>Earth Tag (Supplied as part of Kits 020762K / 020763K)</i>	D
	015292	<i>Element Gasket (Supplied as part of Kits 020762K / 020763K)</i>	C
19	240347	VENT TEE ASSY (which includes the following:-)	D
19a	025397	VENT TEE	D
19b	041706	SCREW SKT HEAD SHOULDER M5 x 30	D
19c	237482	SPACER	D
19d	020819	OVER-PRESSURE SPRING	D
19e	020828	VENT OVER PRESSURE PLATE	D
19f	020827	VENT FLAP	D
19g	240045	'R' CLIP M8	D
19h	228301	HINGE BUSH	D
19i	240028	VENT PIVOT SHAFT	D
19j	240046	BISSELL PIN	D
20	240034	THERMAL SWITCH 70°C	B
21	239860	COOLING FAN	B
22	239317	FAN Ø350 x 80	C
23	020896	MOTOR SHAFT SEAL (included in Motor Kits)	B
24	020778	MOTOR MOUNTING PANEL	D
25	240017	MOTOR L9EB40 380-415V 50Hz (3 Phase) KIT	C
	240018	MOTOR L9EB50 220-240V 50Hz (1 Phase / 3 Phase) KIT	C
	240019	MOTOR L9EB40 208-240V 60Hz (1 Phase / 3 Phase) KIT	C
26	232555	MOTOR CAPACITOR 35µF (60Hz Only)	B
	232551	MOTOR CAPACITOR 10µF (50Hz Only)	B
	232552	MOTOR CAPACITOR 12µF (60Hz Only)	B
	232553	MOTOR CAPACITOR 20µF (50Hz Only)	B
	232554	MOTOR CAPACITOR 30µF (50Hz Only)	B
27	020883K	OVERTEMP PROBE KIT	A
28	-----	DOOR MICROSWITCH ASSEMBLY	--
28a	236880	MICROSWITCH BUTTON ASSY	D
28b	024802	MICROSWITCH	A
28c	041043	SCREW M5 x 12 TAPTITE PH NP	D
28d	003397	SPACER PLATED	D
28e	235354	MICROSWITCH RETURN SPRING	B
28f	239786	MICROSWITCH ROD	D
28g	017929	DAMPER ROD CLIP	D
28h	239584	MICROSWITCH BRACKET	D
29	020824	VENT GASKET	D

* Recommended Parts Level	
RPL	Number of Units In-Service.
A	1-5
A+B	5-10
A+B+C	10-50
A+B+C+D	50+

## Water Connections

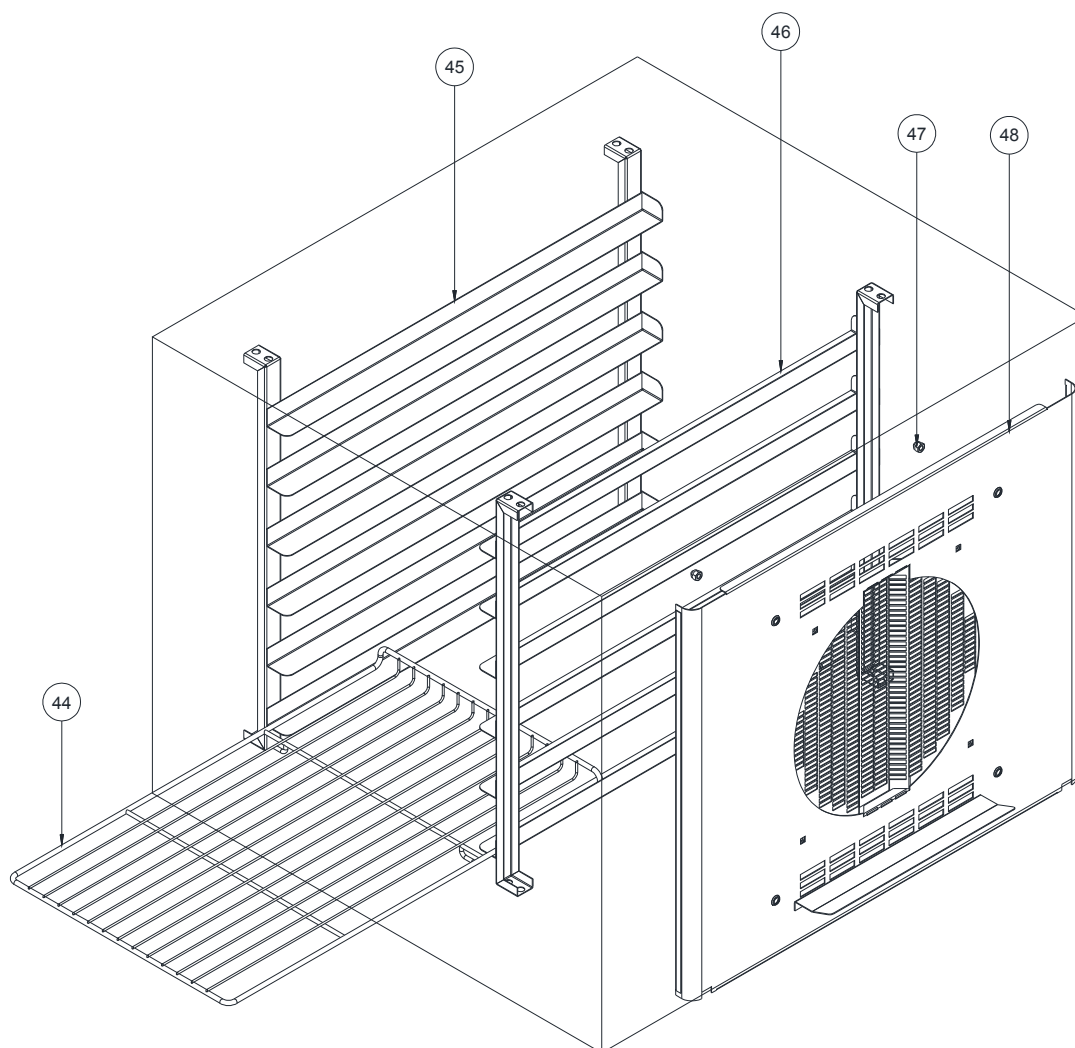


ITEM	PART No.	DESCRIPTION	*RPL
30	239834	CIRCUIT BREAKER1P 5A W57	A
31	234429	TRANSFORMER 208/240V x 12VAC	A
32	012753	CONNECTOR 68 x 4 x 4	D
33	020853	WHIRLJET SPRAY BODY	C
34	020858	STEAM TUBE	D
35	020856	GASKET	D
36	020861	COMPRESSION UNION 62 x 4 x 4	D
37	239865	WATER SUPPLY TUBE	D
38	238981	WATER SOLENOID 3/4" BSP	A
Not Shown	025922	ADAPTOR 3/4" BSP/GHT Brass (USA/Can/Mexico Only)	D
Not Shown	021527	WASHER RUBBER 23 x 14.5 x 1.5mm (USA/Can/Mexico Only)	D
39	021233	CABLE ENTRY BUSH	D
40	231760	TERMINAL BLOCK GREEN	D
41	022295	TERMINAL BLOCK GREY	D
42	231759	TERMINAL BLOCK RED	D
43	020995	END ANCHOR	D

* Recommended Parts Level	
RPL	Number of Units In-Service.
A	1-5
A+B	5-10
A+B+C	10-50
A+B+C+D	50+

## 9 Exploded Parts Listings

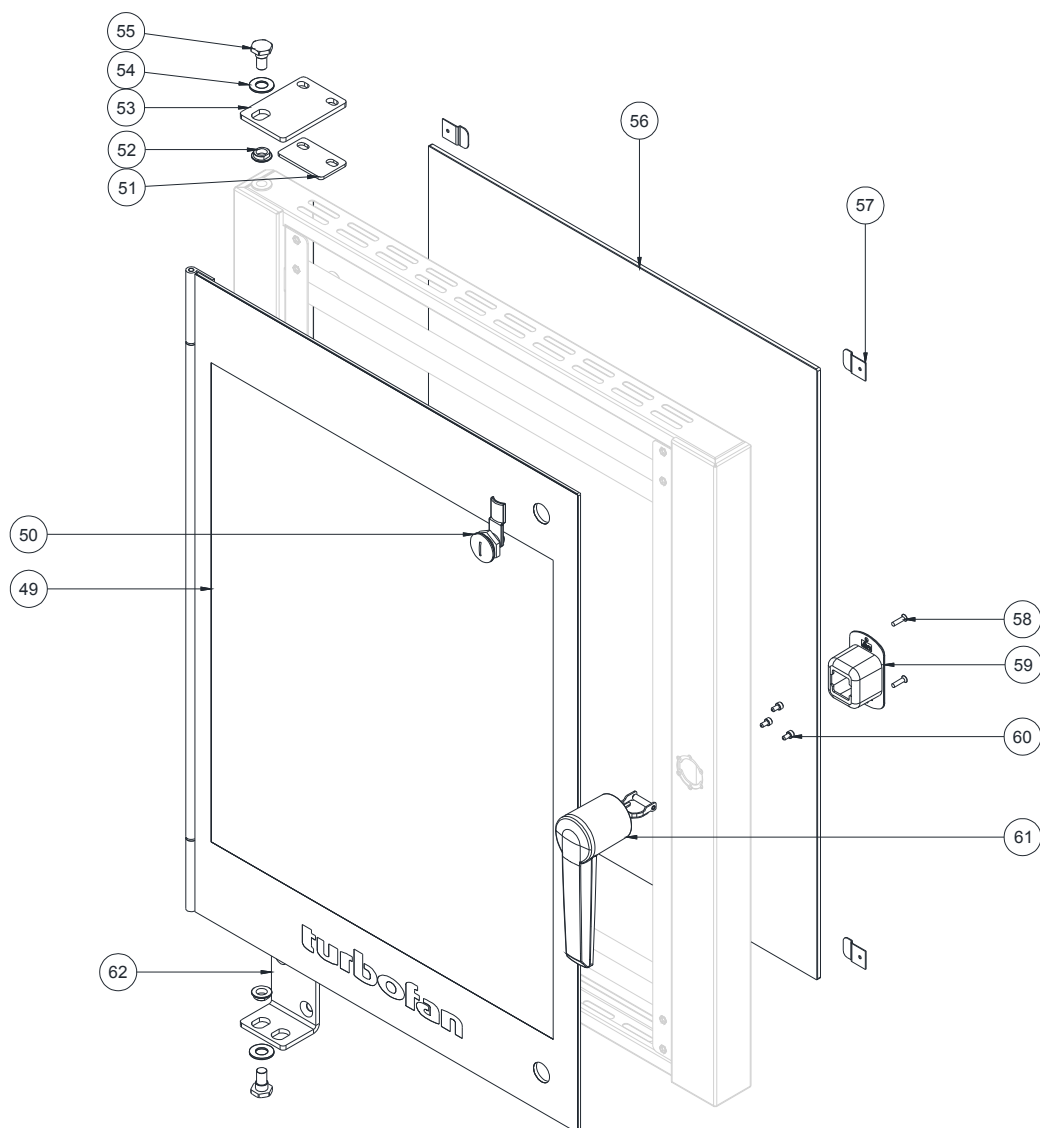
### Oven Racks



ITEM	PART No.	DESCRIPTION	*RPL
44	020993	OVEN RACK E35 - 30"	D
	015168	OVEN RACK E35 - 26"	D
45	025916	Rack Runner LH WA <b>4 Tray</b> (26" Only)	D
	026127	Rack Runner LH WA <b>5 Tray</b> (26" Only)	D
	020809	Rack Runner LH WA <b>6 Tray</b> (26" Only)	D
	025089	Rack Runner LH WA <b>8 Tray</b> (26" Only)	D
	026590	Rack Runner LH WA <b>4 Tray</b> (30" Only)	D
	026789	Rack Runner LH WA <b>5 Tray</b> (30" Only)	D
	020811	Rack Runner LH WA <b>6 Tray</b> (30" Only)	D
	023018	Rack Runner LH WA <b>8 Tray</b> (30" Only)	D
46	025917	Rack Runner RH WA <b>4 Tray</b> (26" Only)	D
	026128	Rack Runner RH WA <b>5 Tray</b> (26" Only)	D
	020810	Rack Runner RH WA <b>6 Tray</b> (26" Only)	D
	025090	Rack Runner RH WA <b>8 Tray</b> (26" Only)	D
	026591	Rack Runner RH WA <b>4 Tray</b> (30" Only)	D
	026787	Rack Runner RH WA <b>5 Tray</b> (30" Only)	D
	020812	Rack Runner RH WA <b>6 Tray</b> (30" Only)	D
	023019	Rack Runner RH WA <b>8 Tray</b> (30" Only)	D
47	047735	NUT M8 DOME	D
48	026655	FAN BAFFLE ASSY 30"	D
	026654	FAN BAFFLE ASSY 26"	D

* Recommended Parts Level	
RPL	Number of Units In-Service.
<b>A</b>	1-5
<b>A+B</b>	5-10
<b>A+B+C</b>	10-50
<b>A+B+C+D</b>	50+

## Door Assembly

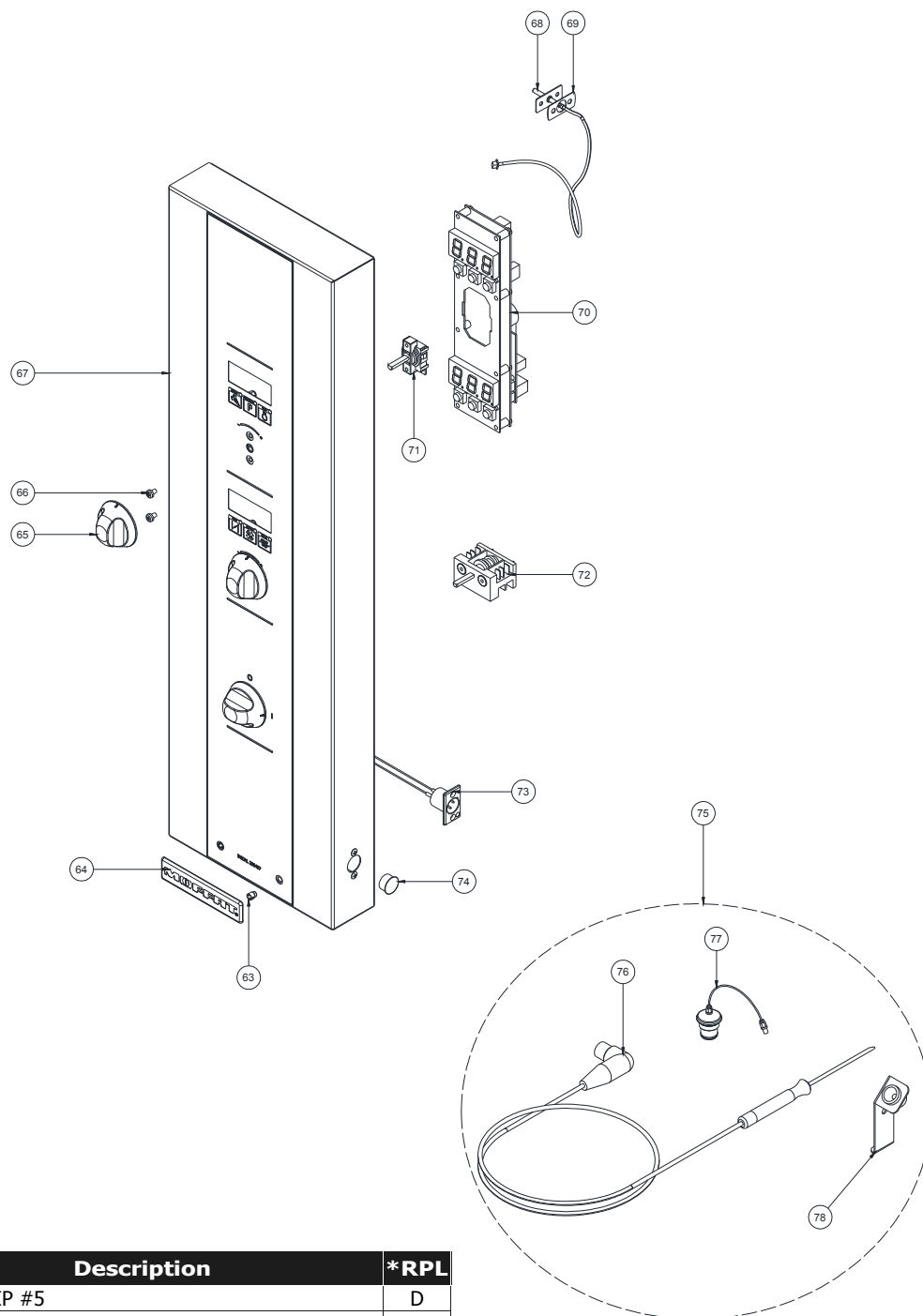


ITEM	PART No.	DESCRIPTION	*RPL
49	239512	DOOR OUTER GLASS ASSEMBLY	C
50	232588	QUAD CATCH	D
51	239525	HINGE BRACKET TOP SPACER	D
52	239528	HINGE PIVOT NUT	D
53	239523	HINGE BRACKET TOP	D
54	748072	WASHER M12	D
55	239527	HINGE PIVOT PIN	B
56	239519	DOOR INNER GLASS	C
57	239516	DOOR GLASS CLIP	D
58	041444	SCREW M4 x 16 CSK POSI HD NP	D
59	236198	DOOR LATCH COVER	D
60	748065	SCREW M4 x 8 SKT HD CAP ZP	D
61	235859	DOOR HANDLE ASSEMBLY	A
62	239524	HINGE BRACKET BOTTOM	D

* Recommended Parts Level	
RPL	Number of Units In-Service.
A	1-5
A+B	5-10
A+B+C	10-50
A+B+C+D	50+

## 9 Exploded Parts Listings

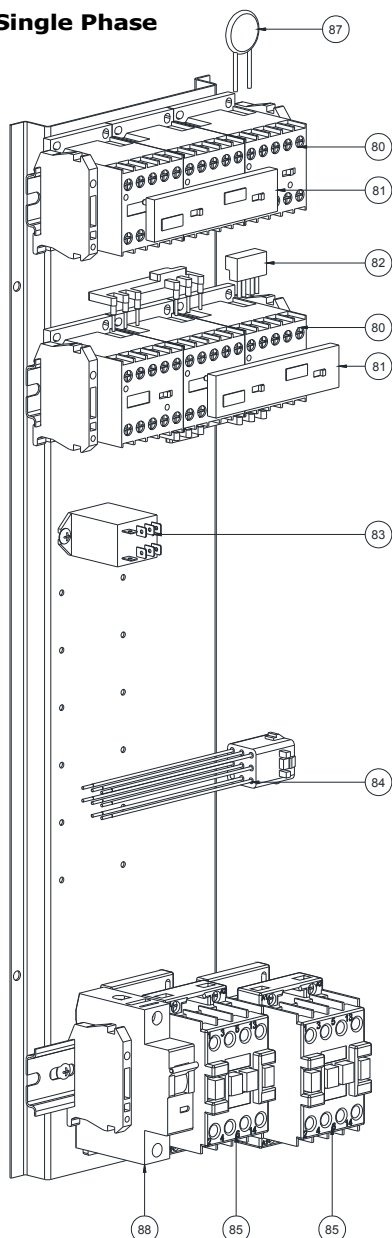
### Control Panel



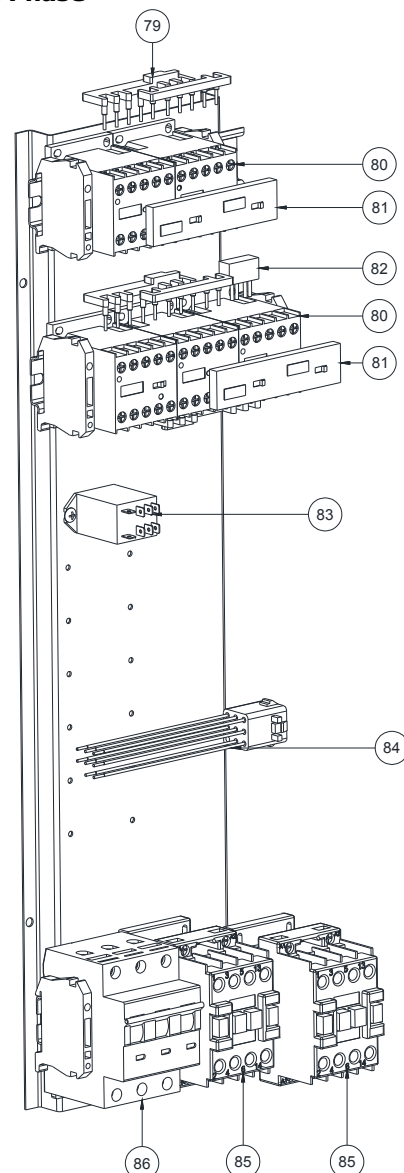
Item	Part No.	Description	*RPL
63	228132	TUBE CLIP #5	D
64	233865	BADGE MOFFAT	D
65	234447	KNOB TURBOFAN INDEX	D
66	041425	SCREW M4 X 6 PAN HD PHIL NP	D
67	239445	CONTROL PANEL LAMINATED (E35D)	D
68	237447K	OVEN TEMPERATURE PROBE (PT1000)	B
69	236885	GASKET - Oven Temp Probe ( <i>included in 237447K</i> )	D
70	240119	DIGITAL CONTROLLER KIT	A
	234450K	ENCODER KIT	B
71	Kit includes the following:	- Encoder	--
		- Knob Stop Plate	--
		- Screws M4 x 6Pan HD Phil NP	--
		- Knob Index	--
72	020822	SELECTOR SWITCH POWER	A
73	235846	PANEL SOCKET CORE TEMP - D SERIES	C
74	236192	DOME PLUG 15.9MM	D
75	236060	CORE TEMP PROBE KIT ( <i>which includes:-</i> )	B
76	235845	CORE TEMP PROBE (PT1000)	B
77	235847	DUST CAPE CORE TEMP SOCKET	D
78	236486	CORE TEMP PROBE HOLDER	C
Not Shown	748019	SCREW M4 x 10 TAPTITE PAN POZI ZP	D

* Recommended Parts Level	
RPL	Number of Units In-Service.
A	1-5
A+B	5-10
A+B+C	10-50
A+B+C+D	50+

## Gear Tray - Single Phase



## Gear Tray - Three Phase

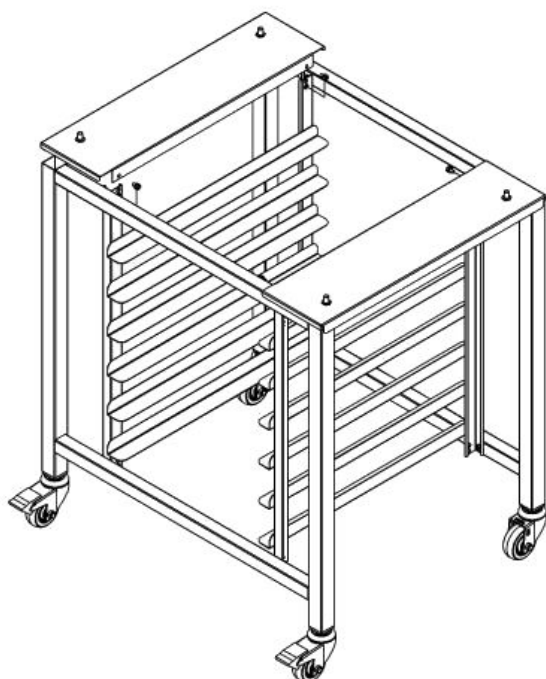


Item	Part No.	Description	*RPL
79	231745	REVERSING STARTER KIT SMX9022	D
80	231742	CONTACTOR NC 11BG0601A230	A
81	231743	CONTACTOR INTERLOCK 11BGX5000	D
82	231744	STAR DELTA KIT SMX9021	D
83	021534	RELAY 240V LY1F	A
84	239836	MOTOR WIRING LOOM	D
85	231739	HEAT / SAFETY CONTACTOR (3 PHASE, 380-415V MODELS, 1 PHASE MODELS)	A
	231740	HEAT / SAFETY CONTACTOR (3 PHASE, 208-240V MODELS)	A
86	305449	CIRCUIT BREAKER 10 AMP	A
87	240109	THERMISTOR 10 OHM	D
88	239833	CIRCUIT BREAKER 1P, 15A	A

* Recommended Parts Level	
RPL	Number of Units In-Service.
A	1-5
A+B	5-10
A+B+C	10-50
A+B+C+D	50+



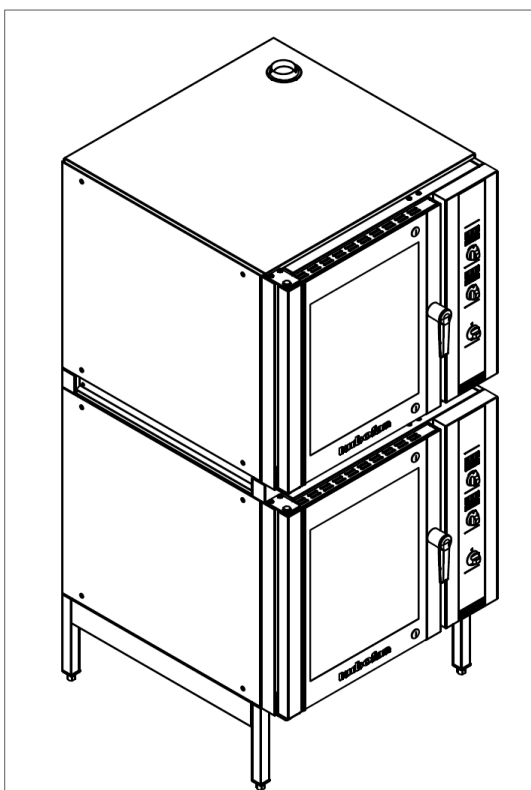
### SK35 Stand



#### SK35 - Stand for E35D6-26 / E35D6-30 Ovens

Width = 910mm ( $35\frac{7}{8}$ "').  
Depth = 773mm ( $30\frac{3}{8}$ "').  
Height = 880mm ( $34\frac{5}{8}$ "').

#### DSKE35-26 / DSKE35-30 Double Stacking Kit - with adjustable Feet.



#### DSKEC35-26 / DSKEC35-30 Double Stacking Kit - with Castors.

