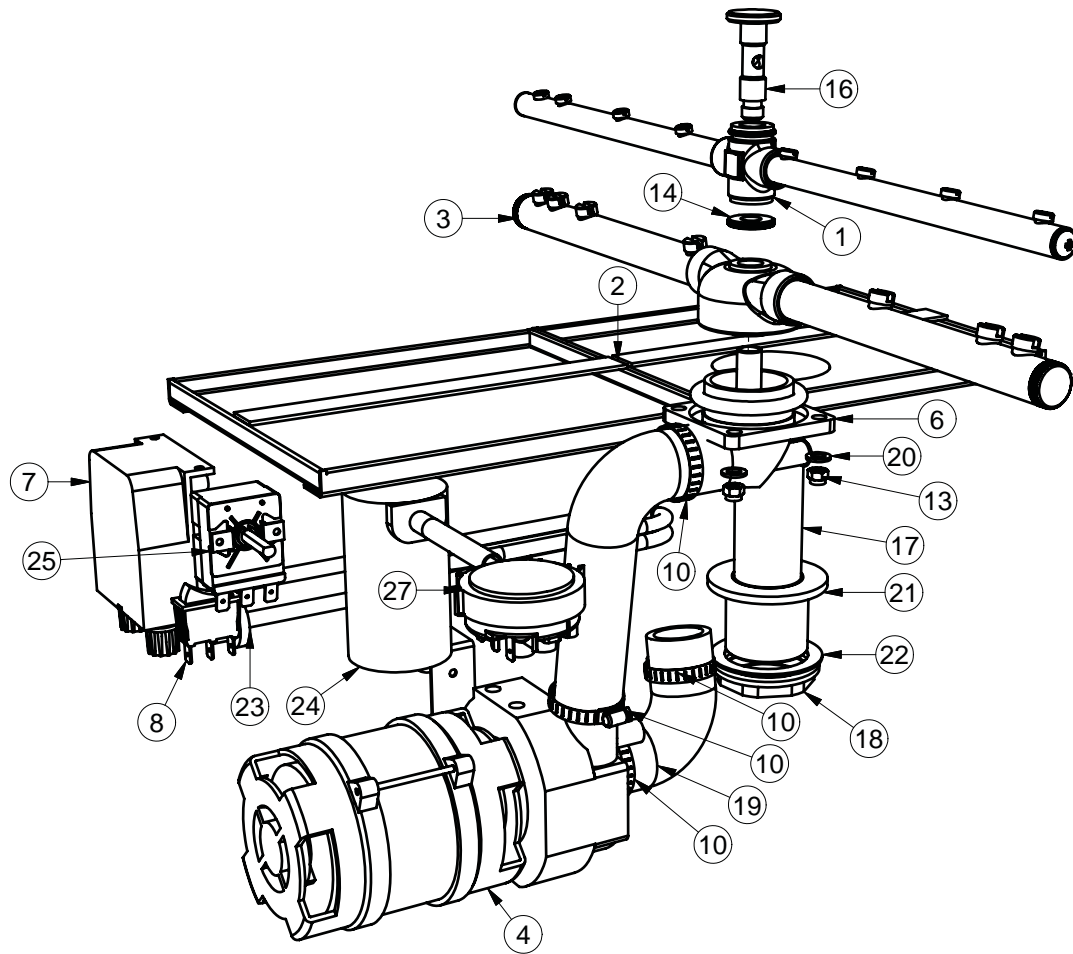
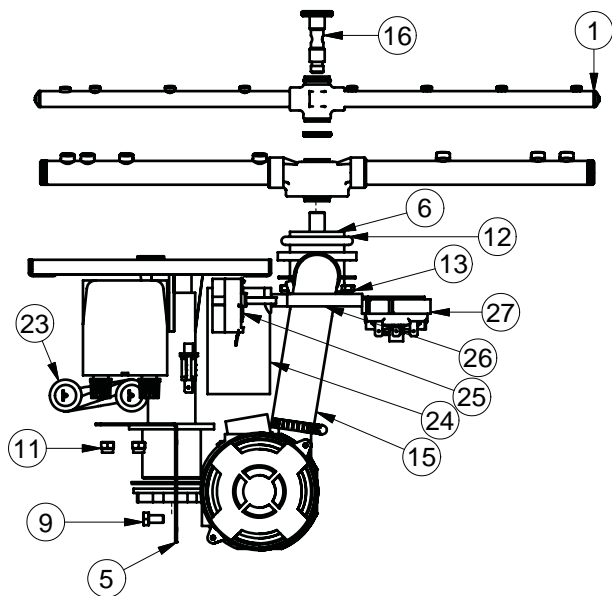


GM4 WASH SYSTEM

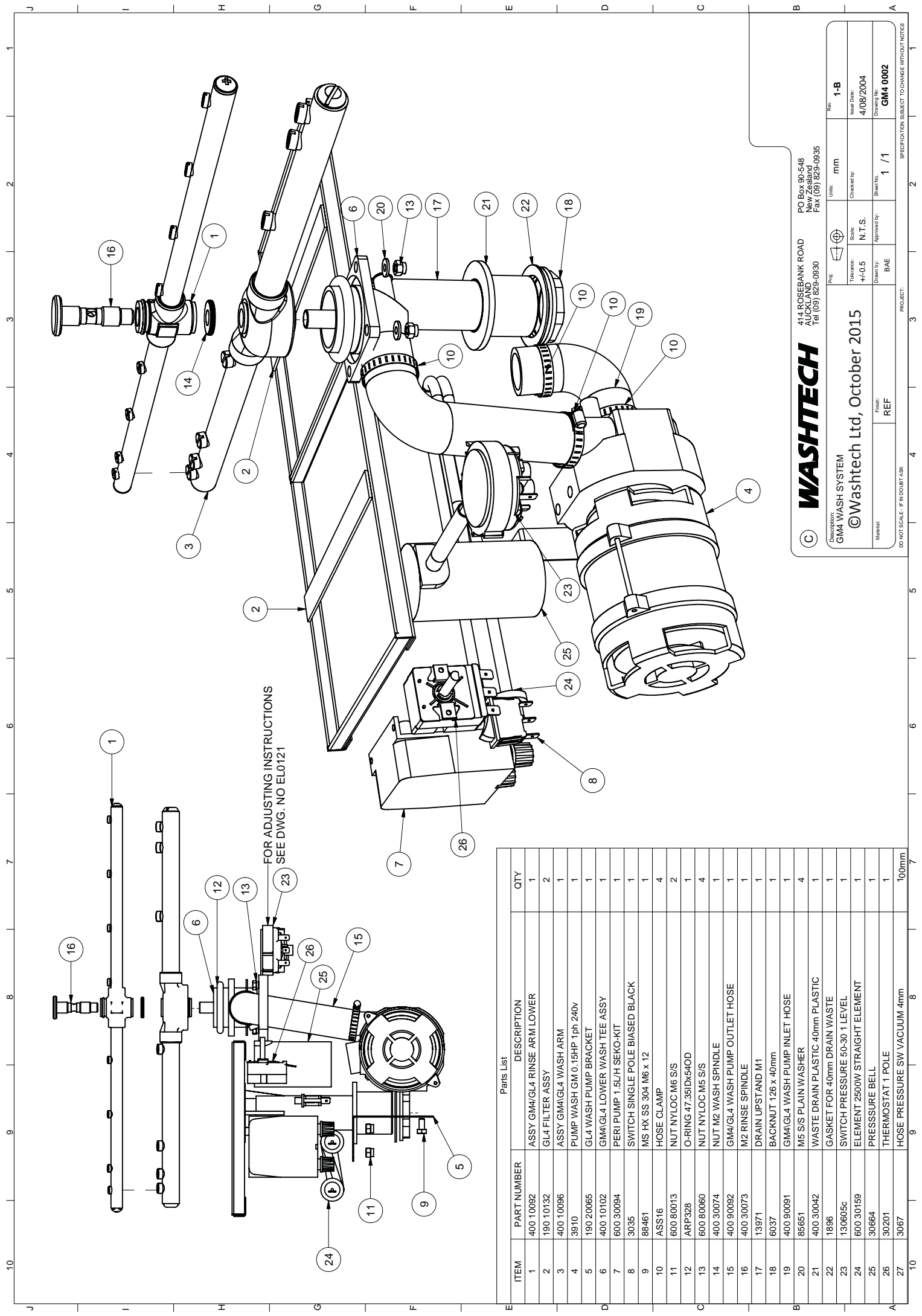
GM4 0002 26/01/2006 REV 1-C



Parts List			
ITEM	PART NUMBER	DESCRIPTION	QTY
1	400 10092	ASSY GM4/GL4 RINSE ARM LOWER	1
2	190 10132	GL4 FILTER ASSY	2
3	400 10096	ASSY GM4/GL4 WASH ARM	1
4	3910	PUMP WASH GM 0.15HP 1ph 240v	1
5	190 20065	GL4 WASH PUMP BRACKET	1
6	400 10102	GM4/GL4 LOWER WASH TEE ASSY	1
7	600 30094	PERI PUMP 1.5L/H SEKO-KIT	1
8	3035	SWITCH SINGLE POLE BIASED BLACK	1
9	88461	MS HX SS 304 M6 x 12	1
10	ASS16	HOSE CLAMP	4
11	600 80013	NUT NYLOC M6 S/S	2
12	ARP328	O-RING 47.35IDx54OD	1
13	600 80060	NUT NYLOC M5 S/S	4
14	400 30074	NUT M2 WASH SPINDLE	1
15	400 90092	GM4/GL4 WASH PUMP OUTLET HOSE	1
16	400 30073	M2 RINSE SPINDLE	1
17	13971	DRAIN UPSTAND M1	1
18	6037	BACKNUT 126 x 40mm	1
19	400 90091	GM4/GL4 WASH PUMP INLET HOSE	1
20	85651	M5 S/S PLAIN WASHER	4
21	400 30042	WASTE DRAIN PLASTIC 40mm PLASTIC	1
22	1896	GASKET FOR 40mm DRAIN WASTE	1
23	600 30159	ELEMENT 2500W STRAIGHT ELEMENT	1
24	30664	PRESSURE BELL	1
25	30201	THERMOSTAT 1 POLE	1
26	3067	HOSE PRESSURE SW VACUUM 4mm	1
27	600 30252	PRESSURE SWITCH 50/25mm	1



DATE	DESCRIPTION	REV
26/01/2006	CHANGE PRESSURE SWITCH	1-C



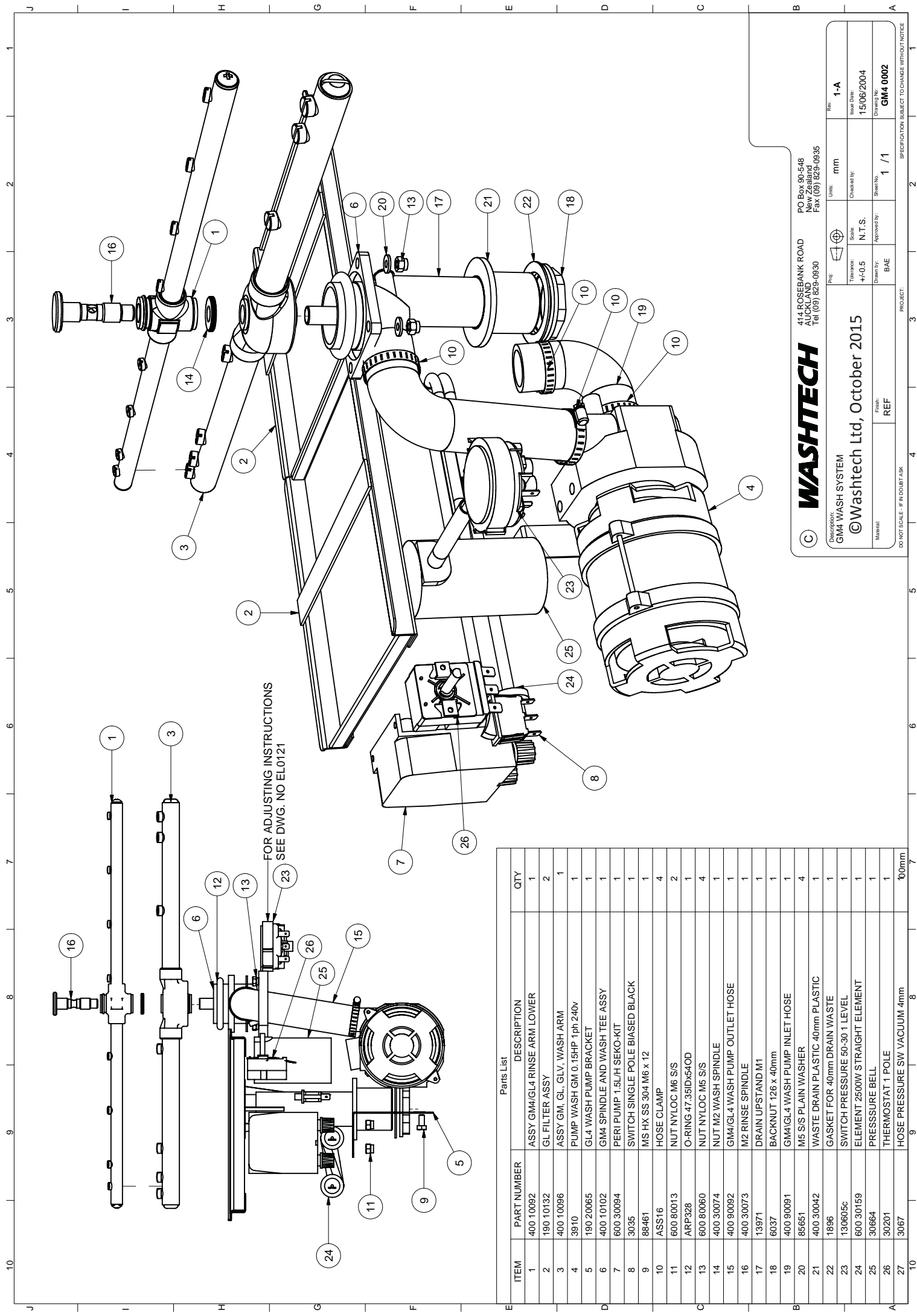
WASHTECH
414 ROSEBANK ROAD
AUCKLAND
Tel (09) 829-0930
PO Box 90-548
New Zealand
Fax (09) 829-0935

© **WASHTECH**
Description: GM4 WASH SYSTEM
©Washtech Ltd, October 2015

Proj:	Units:	mm	Rev:	1-B
Tolerance:	Scale:	N.T.S.	Issue Date:	4/08/2004
Drawn by:	Approved by:	BAE	Sheet No:	1 / 1
Material:	Finish:	REF	Drawing No:	GM4 0002

DO NOT SCALE - IF IN DOUBT ASK PROJECT: SPECIFICATIONS SUBJECT TO CHANGE WITHOUT NOTICE

Parts List			
ITEM	PART NUMBER	DESCRIPTION	QTY
1	400 10092	ASSY GM4/GL4 RINSE ARM LOWER	1
2	190 10132	GL4 FILTER ASSY	2
3	400 10096	ASSY GM4/GL4 WASH ARM	1
4	3910	PUMP WASH GM 0.15HP 1ph 240v	1
5	190 20065	GL4 WASH PUMP BRACKET	1
6	400 10102	GM4/GL4 LOWER WASH TEE ASSY	1
7	600 30094	PERI PUMP 1.5L/H SEKO-KIT	1
8	3035	SWITCH SINGLE POLE BIASED BLACK	1
9	88461	MS HX SS 304 M6 x 12	1
10	ASS16	HOSE CLAMP	4
11	600 80013	NUT NYLOC M6 S/S	2
12	ARP328	O-RING 47.35IDx64OD	1
13	600 80060	NUT NYLOC M5 S/S	4
14	400 30074	NUT M2 WASH SPINDLE	1
15	400 90092	GM4/GL4 WASH PUMP OUTLET HOSE	1
16	400 30073	M2 RINSE SPINDLE	1
17	13971	DRAIN UPSTAND M1	1
18	6037	BACKNUT 126 x 40mm	1
19	400 90091	GM4/GL4 WASH PUMP INLET HOSE	1
20	85651	M5 S/S PLAIN WASHER	4
21	400 30042	WASTE DRAIN PLASTIC 40mm PLASTIC	1
22	1896	GASKET FOR 40mm DRAIN WASTE	1
23	130605c	SWITCH PRESSURE 50-30 1 LEVEL	1
24	600 30159	ELEMENT 2500W STRAIGHT ELEMENT	1
25	30664	PRESSURE BELL	1
26	30201	THERMOSTAT 1 POLE	1
27	3067	HOSE PRESSURE SW VACUUM 4mm	100mm



WASHTECH
414 ROSEBANK ROAD
AUCKLAND
Tel (09) 829-0930
PO Box 90-548
New Zealand
Fax (09) 829-0935

© **WASHTECH**
Description:
GM4 WASH SYSTEM
©Washtech Ltd, October 2015

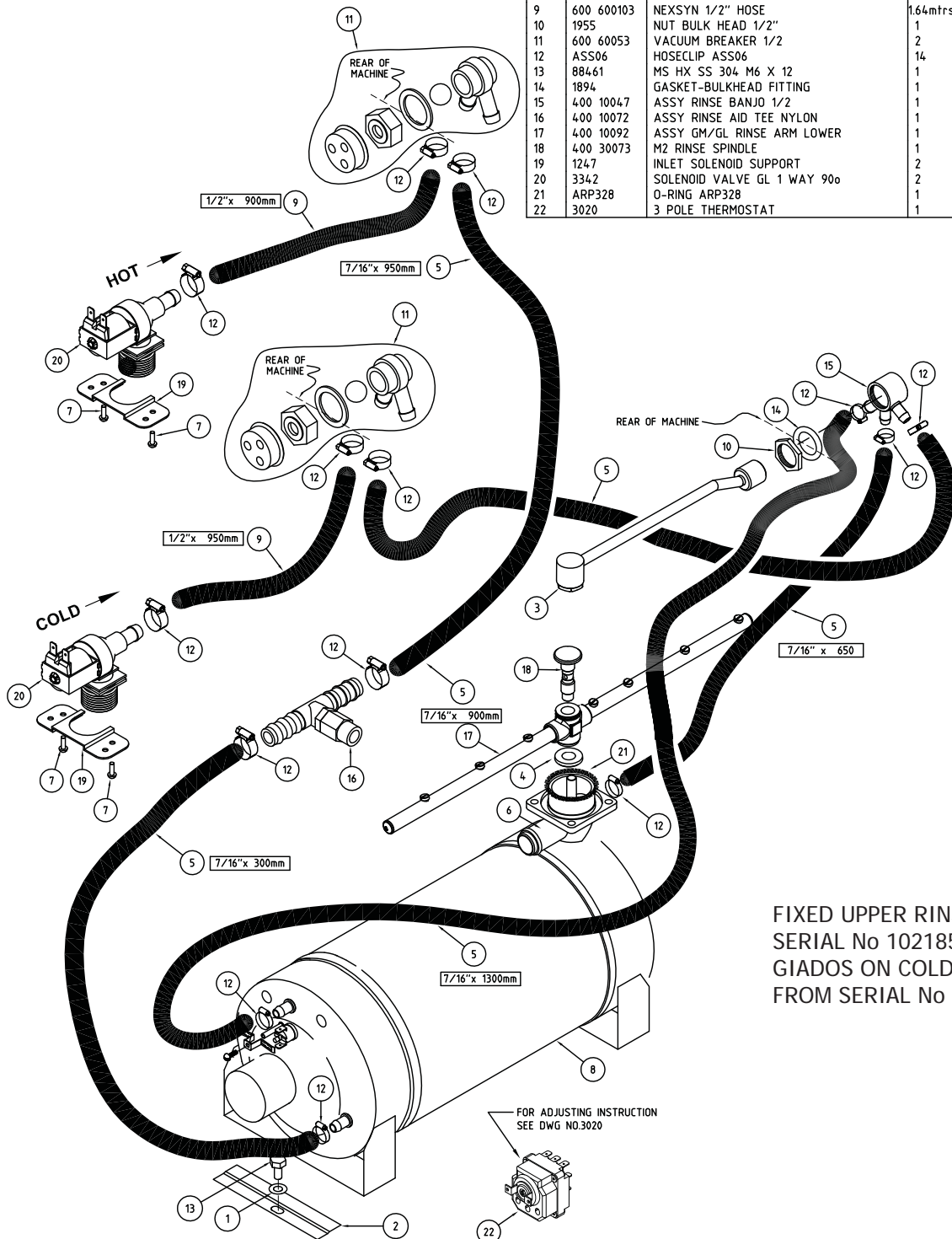
Proj:	Units:	Rev:
Scale:	mm	1-A
Tolerance:	Checked by:	Issue Date:
±0.5	N.T.S.	15/06/2004
Drawn by:	Approved by:	Drawing No:
BAE		GM4 0002
Sheet No:	1 / 1	

DO NOT SCALE - IF IN DOUBT ASK PROJECT: 1 2 3 4 5 6 7 8 9 10

GM(W) RINSE SYSTEM

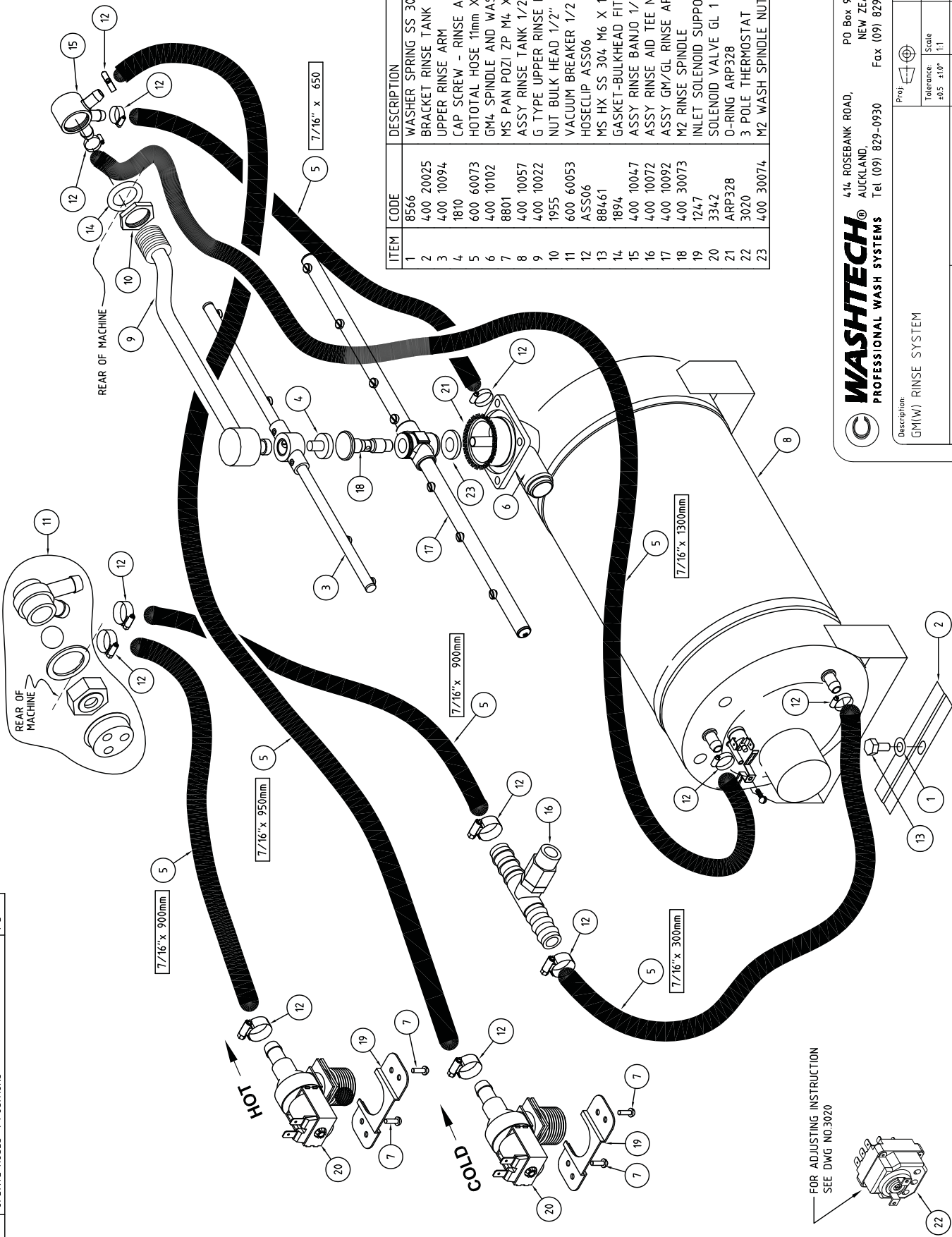
GM4 0003 21-02-05 1 C

ITEM	CODE	DESCRIPTION	QTY
1	8566	WASHER SPRING SS 304 M6	2
2	400 20025	BRACKET RINSE TANK CLAMP	1
3	400 10108	FIXED JET RINSE ARM ASSY	1
4	400 30074	M2 WASH SPINDLE NUT	1
5	600 60073	HOTOTAL HOSE 11mm X 12mm	1
6	400 10102	GM4 SPINDLE AND WASH TEE ASSY	1
7	8801	MS PAN POZI ZP M4 X 12	4
8	400 10057	ASSY RINSE TANK 1/2	1
9	600 600103	NEXSYN 1/2" HOSE	1.64mtrs
10	1955	NUT BULK HEAD 1/2"	1
11	600 60053	VACUUM BREAKER 1/2	2
12	ASS06	HOSECLIP ASS06	14
13	88461	MS HX SS 304 M6 X 12	1
14	1894	GASKET-BULKHEAD FITTING	1
15	400 10047	ASSY RINSE BANJO 1/2	1
16	400 10072	ASSY RINSE AID TEE NYLON	1
17	400 10092	ASSY GM/GL RINSE ARM LOWER	1
18	400 30073	M2 RINSE SPINDLE	1
19	1247	INLET SOLENOID SUPPORT	2
20	3342	SOLENOID VALVE GL 1 WAY 90o	2
21	ARP328	O-RING ARP328	1
22	3020	3 POLE THERMOSTAT	1



FIXED UPPER RINSE FROM
SERIAL No 102185
GIADOS ON COLD RINSE
FROM SERIAL No 101855

Date	Change	Issue
05-10-04	UPDATE HOSES \ POSITIONS	1-B



ITEM	CODE	DESCRIPTION	QTY
1	8566	WASHER SPRING SS 304 M6	2
2	400 20025	BRACKET RINSE TANK CLAMP	1
3	400 10094	UPPER RINSE ARM	1
4	1810	CAP SCREW - RINSE ARM SECURING	1
5	600 60073	HOTOTAL HOSE 11mm X 12mm	1
6	400 10102	GM4 SPINDLE AND WASH TEE ASSY	1
7	8801	MS PAN POZI ZP M4 X 12	4
8	400 10057	ASSY RINSE TANK 1/2	1
9	400 10022	G TYPE UPPER RINSE PIPE ASSY	1
10	1955	NUT BULK HEAD 1/2"	1
11	600 60053	VACUUM BREAKER 1/2	1
12	ASS06	HOSECLIP ASS06	12
13	88461	MS HX SS 304 M6 X 12	1
14	1894	GASKET-BULKHEAD FITTING	1
15	400 10047	ASSY RINSE BANJO 1/2	1
16	400 10072	ASSY RINSE AID TEE NYLON	1
17	400 10092	ASSY GM/GL RINSE ARM LOWER	1
18	400 30073	M2 RINSE SPINDLE	1
19	1247	INLET SOLENOID SUPPORT	1
20	3342	SOLENOID VALVE GL 1 WAY 90o	2
21	ARP328	O-RING ARP328	1
22	3020	3 POLE THERMOSTAT	1
23	400 30074	M2 WASH SPINDLE NUT	1

WASHTECH
PROFESSIONAL WASH SYSTEMS

414 ROSEBANK ROAD,
AUCKLAND
PO Box 90-548
NEW ZEALAND
Tel (09) 829-0930 Fax (09) 829-0935

Description:
GM(W) RINSE SYSTEM

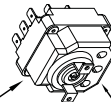
Units:
mm
Tolerance:
+0.5 +10"
Scale:
1:1
Drawn by:
BAE
Sheet No:
1 of 1
Approved by:
GM4 0003

ISSUE NO:
1
Issue Date:
05-10-04
Drawing No:
GM4 0003

DO NOT SCALE - IF IN DOUBT ASK DWG SIZE A3 (390x265)

SPECIFICATION SUBJECT TO CHANGE WITHOUT NOTICE.

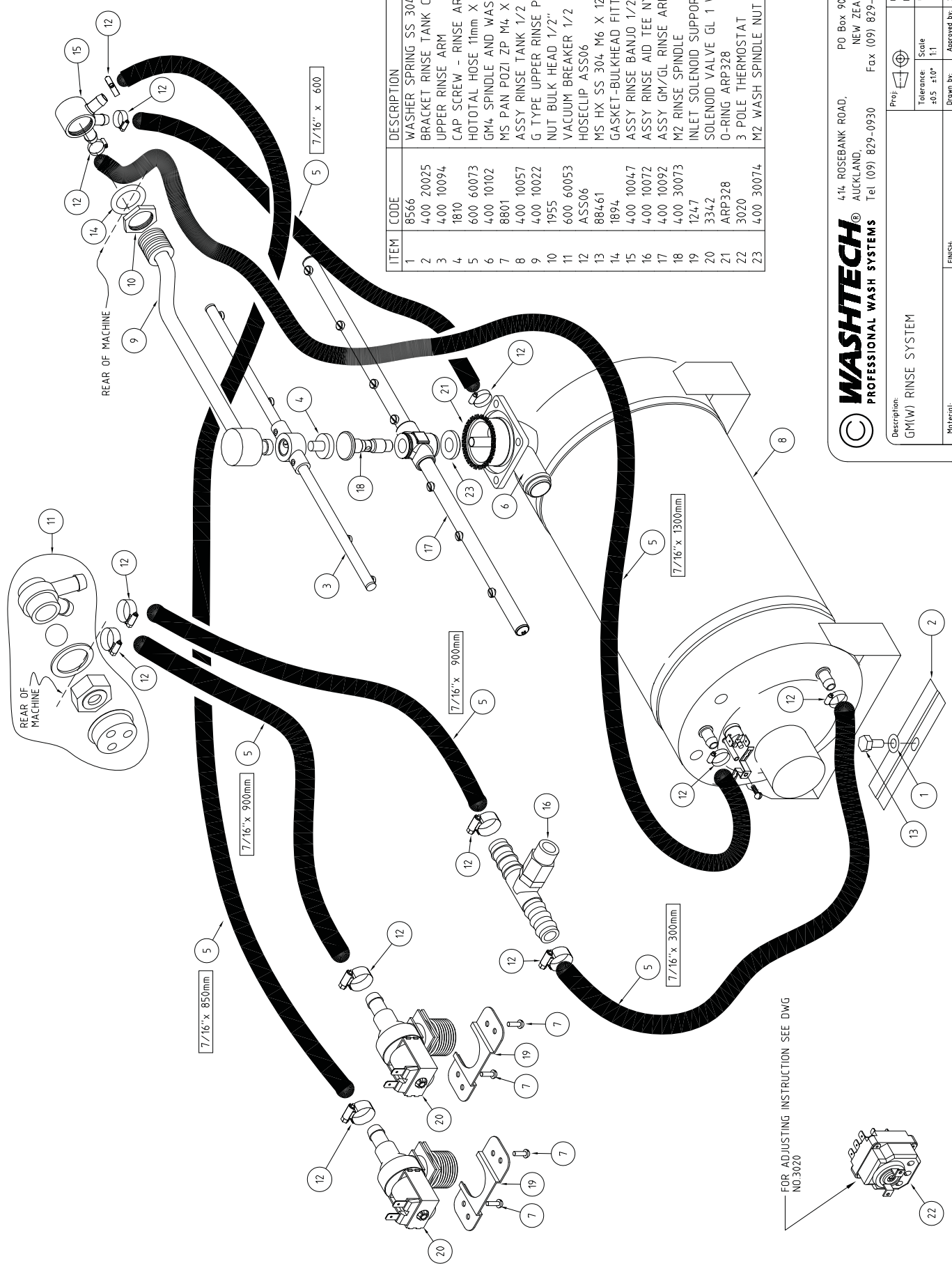
FOR ADJUSTING INSTRUCTION
SEE DWG NO.3020



Drawing No:
GM4 0003

@Washtech Ltd, October 2015

©Washtech Ltd, October 2015



ITEM	CODE	DESCRIPTION	QTY
1	8566	WASHER SPRING SS 304 M6	2
2	400 20025	BRACKET RINSE TANK CLAMP	1
3	400 10094	UPPER RINSE ARM	1
4	1810	CAP SCREW - RINSE ARM SECURING	1
5	600 60073	HOTOTAL HOSE 11mm X 12mm	1
6	400 10102	GM4 SPINDLE AND WASH TEE ASSY	1
7	8801	MS PAN POZI ZP M4 X 12	4
8	400 10057	ASSY RINSE TANK 1/2	1
9	400 10022	G TYPE UPPER RINSE PIPE ASSY	1
10	1955	NUT BULK HEAD 1/2"	1
11	600 60053	VACUUM BREAKER 1/2	1
12	ASS06	HOSECLIP ASS06	12
13	88461	MS HX SS 304 M6 X 12	1
14	1894	GASKET-BULKHEAD FITTING	1
15	400 10047	ASSY RINSE BANJO 1/2	1
16	400 10072	ASSY RINSE AID TEE NYLON	1
17	400 10092	ASSY GM/GL RINSE ARM LOWER	1
18	400 30073	M2 RINSE SPINDLE	1
19	1247	INLET SOLENOID SUPPORT	1
20	3342	SOLENOID VALVE GL 1 WAY 90o	2
21	ARP328	O-RING ARP328	1
22	3020	3 POLE THERMOSTAT	1
23	400 30074	M2 WASH SPINDLE NUT	1

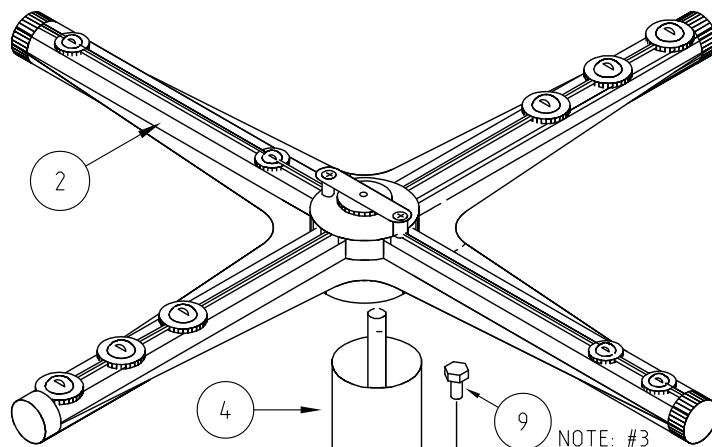


414 ROSEBANK ROAD,
AUCKLAND
PO Box 90-548
NEW ZEALAND
Tel (09) 829-0930
Fax (09) 829-0935

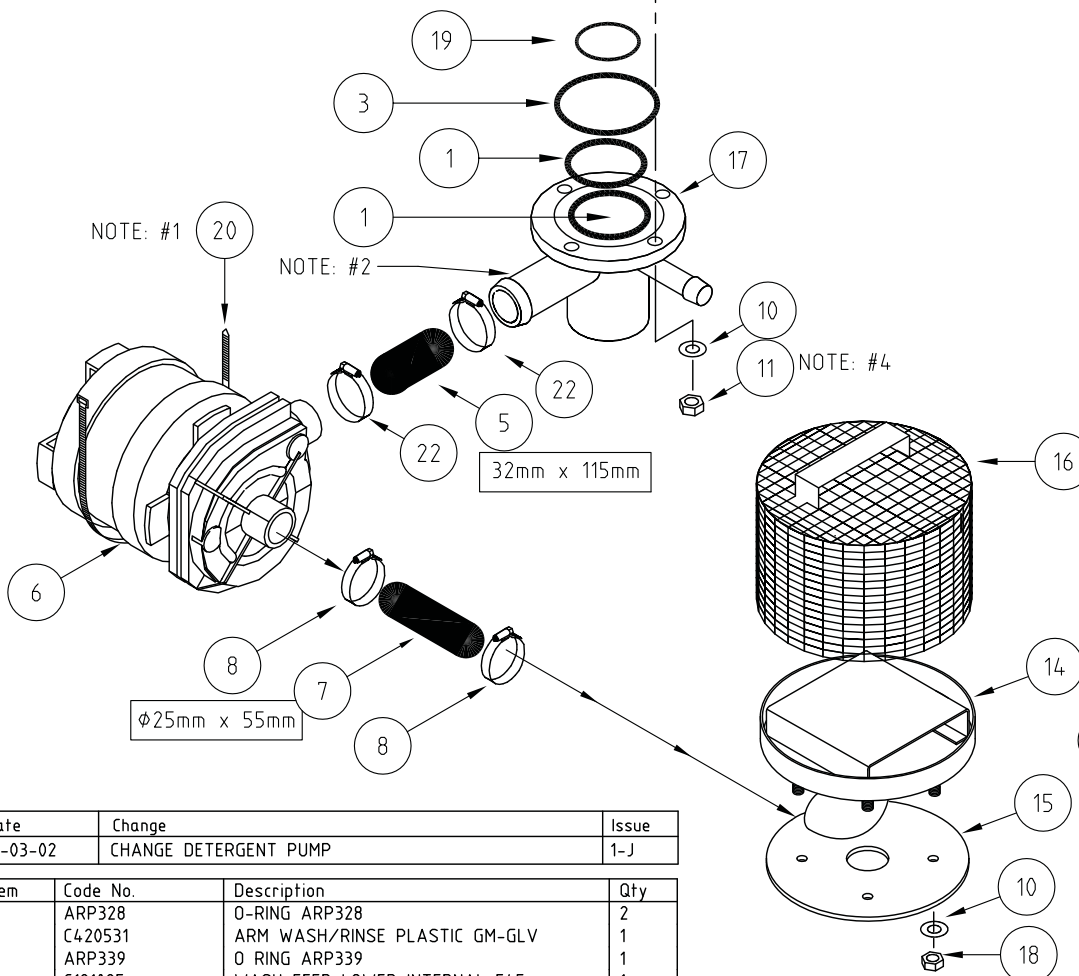
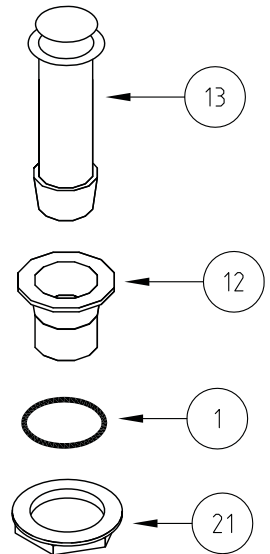
Description: GM(W) RINSE SYSTEM		Proj:	Units: mm	ISSUE NO. 1	Rev. A
Material:		Tolerance: +05 ±10"	Scale: 11	Issue Date: 18-06-04	
FINISH:		Drawn by: B.A.E.	Checked by:	Sheet No. 1 of 1	Drawing No. GM4 0003

Drawing No:
GM4 0003

FOR ADJUSTING INSTRUCTION SEE DWG
NO 3020



- NOTE #1. INSTALL PUMP BY TYING WITH 2 CABLE TIES
 NOTE #2. ENSURE ITEM 15 - LARGE FITTING IS FACING RIGHTSIDE (LOOKING FROM FRONT). BOTTOM HOLE MUST BE FITTED WITH PLASTIC PLUG.
 NOTE #3. ENSURE BOLT DOES NOT TURN IN POSITION WHEN TIGHTENING
 NOTE #4. USE 243 OR 290 LOCTITE ON NUTS BEFORE TIGHTENING



Date	Change	Issue
12-03-02	CHANGE DETERGENT PUMP	1-J

Item	Code No.	Description	Qty
1	ARP328	O-RING ARP328	2
2	C420531	ARM WASH/RINSE PLASTIC GM-GLV	1
3	ARP339	O RING ARP339	1
4	C191025	WASH FEED LOWER INTERNAL F45	1
5	2043	HOSE GM WASH OUTLET 1.0	1
6	3910	PUMP WASH GM 0.15hp 1ph 240v	1
7	2044	HOSE GM WASH INLET	1
8	ASS16	HOSECLIP ASS16	2
9	8846	MS HX SS 304 M6 X 25	4
10	8504	WASHER FL SS 304 M6 x 12.5 x 0.9	12
11	8106	NUT HX SS 304 M6	4
12	400 30042	WASTE DRAIN PLASTIC 40mm WASHTECH	1
13	20131	UPSTAND GM DRAIN (REVISED WASTE)	1
14	177 10002	ASSY GM WASH INLET ELBOW	1
15	177 90003	GASKET WASH INLET TUBE(NEW)	1
16	1239	FILTER WASH INLET ROUND (W/O) 70mm	1
17	2036	ASSY GM LOWER WASH TEE	1
18	600 80013	NUT NYLOC SS M6	4

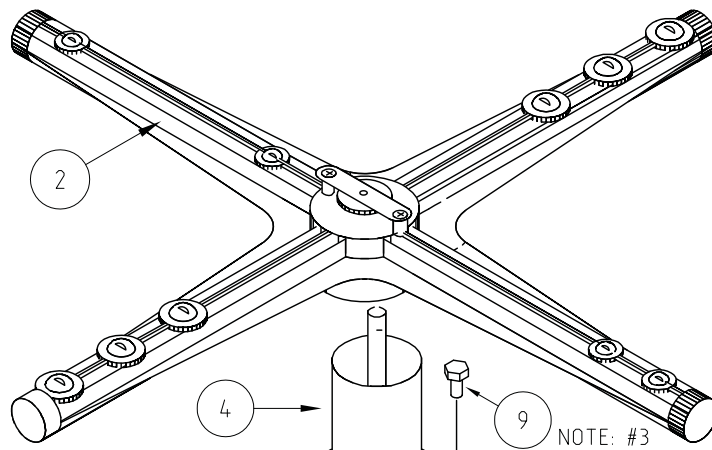
Item	Code No.	Description	Qty
19	ARP113	O RING ARP113	1
20	3207	CABLE TIE 338mm TY527MX	2
21	1953	BACKNUT 40mm PLASTIC	1
22	ASS20	HOSECLIP ASS20	2
23	400 10016	ASSY SEKO DETERGENT PUMP	1

UNIT 1, 27 ALLGAS STREET, SLACKS CREEK,
 QUEENSLAND 4127, AUSTRALIA
 PH: (07) 3290-2877 FX: (07) 3290-2974

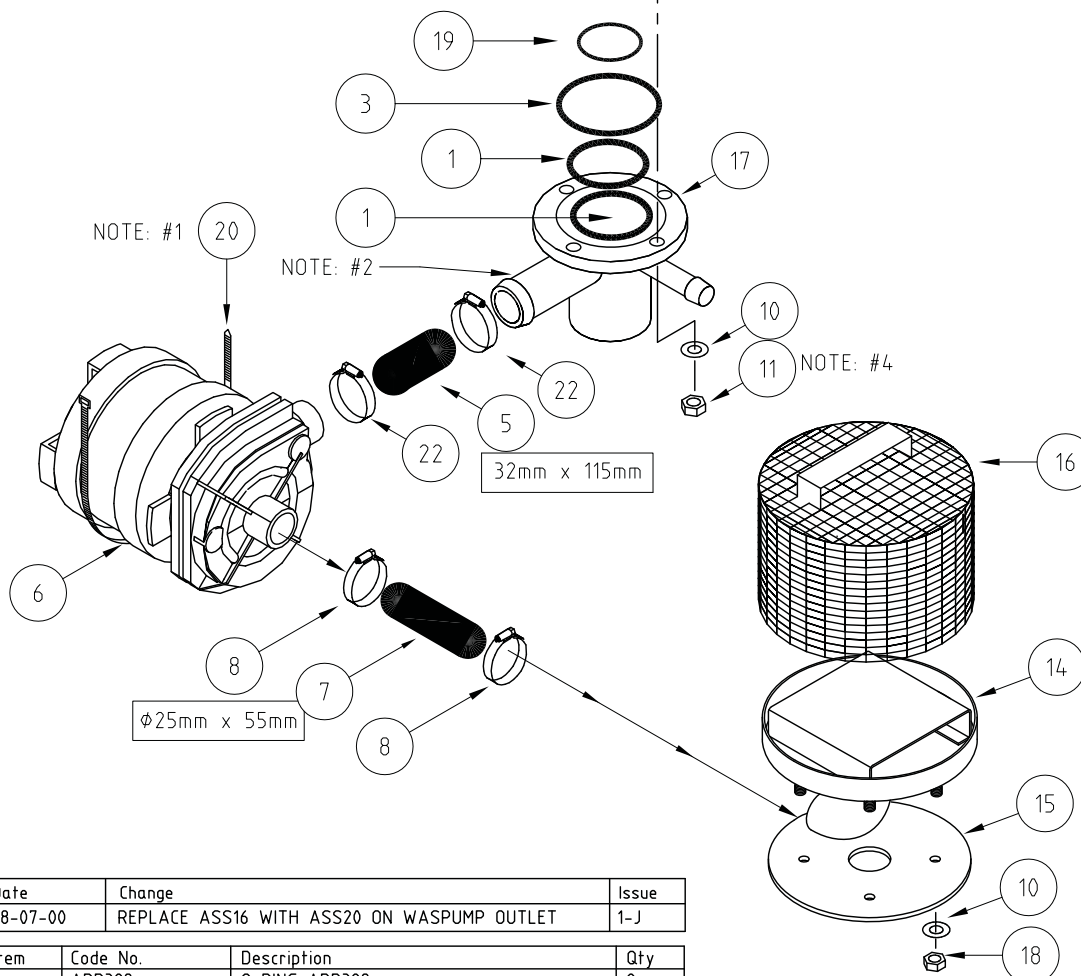
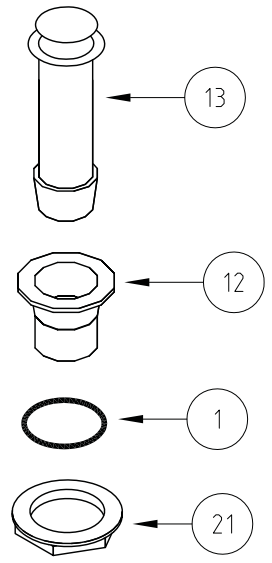
WashTech

9 CORBAN AVENUE, PO Box 21-342
 HENDERSON, AUCKLAND, NEW ZEALAND
 PH: (09) 837-2372 FX: (09) 837-0880

Drawing No: GM0019	ISSUE NO: 1	Rev. J	Description: WASH SYSTEM GM	Scale NTS	Units: mm	Proj. 	Tolerance: ±0.5 ±1.0	Checked by:
	Issue Date: 12-03-02			Material:				Drawn by: S.F.C
	©Washtech Ltd, October 2015			FINISH:				Drawing No: GM0019



- NOTE #1. INSTALL PUMP BY TYING WITH 2 CABLE TIES
- NOTE #2. ENSURE ITEM 15 - LARGE FITTING IS FACING RIGHTSIDE (LOOKING FROM FRONT). BOTTOM HOLE MUST BE FITTED WITH PLASTIC PLUG.
- NOTE #3. ENSURE BOLT DOES NOT TURN IN POSITION WHEN TIGHTENING
- NOTE #4. USE 243 OR 290 LOCTITE ON NUTS BEFORE TIGHTENING



Date	Change	Issue
28-07-00	REPLACE ASS16 WITH ASS20 ON WASPUMP OUTLET	1-J

Item	Code No.	Description	Qty
1	ARP328	O-RING ARP328	2
2	C420531	ARM WASH/RINSE PLASTIC GM-GLV	1
3	ARP339	O RING ARP339	1
4	C191025	WASH FEED LOWER INTERNAL F45	1
5	2043	HOSE GM WASH OUTLET 1.0	1
6	3910	PUMP WASH GM 0.15hp 1ph 240v	1
7	2044	HOSE GM WASH INLET	1
8	ASS16	HOSECLIP ASS16	2
9	8846	MS HX SS 304 M6 X 25	4
10	8504	WASHER FL SS 304 M6 x 12.5 x 0.9	12
11	8106	NUT HX SS 304 M6	4
12	400 30042	WASTE DRAIN PLASTIC 40mm WASHTech	1
13	20131	UPSTAND GM DRAIN (REVISED WASTE)	1
14	177 10002	ASSY GM WASH INLET ELBOW	1
15	177 90003	GASKET WASH INLET TUBE(NEW)	1
16	1239	FILTER WASH INLET ROUND (W/O) 70mm	1

Item	Code No.	Description	Qty
17	2036	ASSY GM LOWER WASH TEE	1
18	600 80013	NUT NYLOC SS M6	4
19	ARP113	O RING ARP113	1
20	3207	CABLE TIE 338mm TY527MX	2
21	1953	BACKNUT 40mm PLASTIC	1
22	ASS20	HOSECLIP ASS20	2

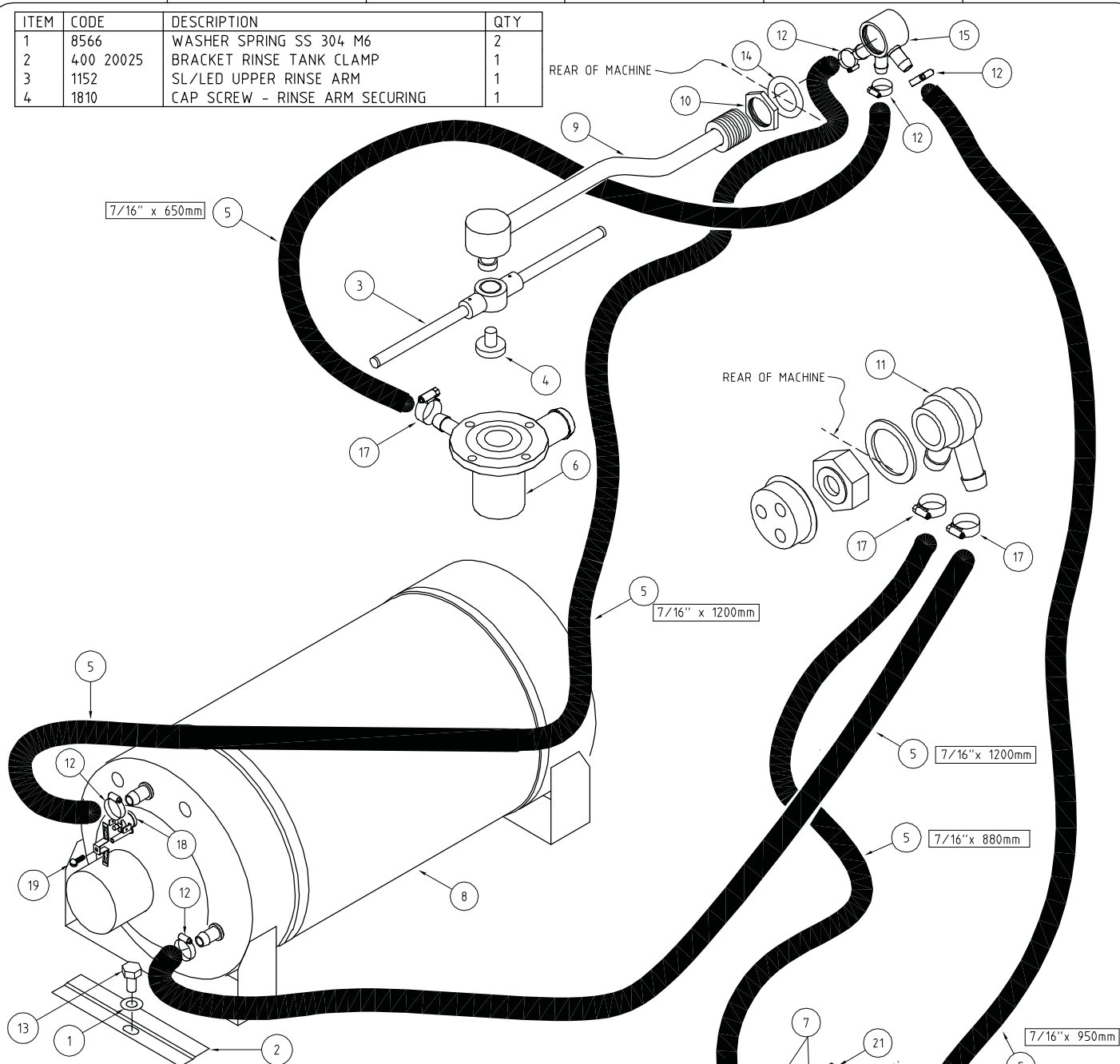
UNIT 1, 27 ALLGAS STREET, SLACKS CREEK,
QUEENSLAND 4127, AUSTRALIA
PH: (07) 3290-2877 FX: (07) 3290-2974

WashTech

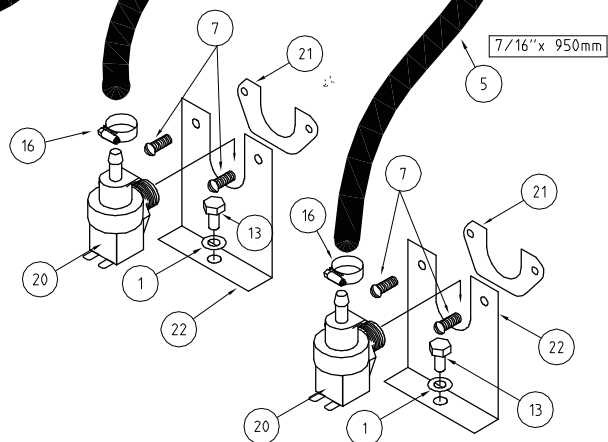
9 CORBAN AVENUE, PO Box 21-342
HENDERSON, AUCKLAND, NEW ZEALAND
PH: (09) 837-2372 FX: (09) 837-0880

Drawing No: GM0019	ISSUE NO. 1	Rev. 1	Description: WASH SYSTEM GM	Scale NTS	Units: mm	Proj. 	Tolerance: ±0.5 ±1.0	Checked by:
	Issue Date: 28-07-00			Material:			Drawn by: S.F.C	
	©Washtech Ltd, October 2015			FINISH:			Drawing No: GM0019	

ITEM	CODE	DESCRIPTION	QTY
1	8566	WASHER SPRING SS 304 M6	2
2	400 20025	BRACKET RINSE TANK CLAMP	1
3	1152	SL/LED UPPER RINSE ARM	1
4	1810	CAP SCREW - RINSE ARM SECURING	1



ITEM	CODE	DESCRIPTION	QTY
5	600 60073	HOTOTAL HOSE 11mm X 19mm	1
6	2036	ASSY GM LOWER WASH TEE	4
7	8800	MS PAN POZI ZP M4 X 6	1
8	400 10057	ASSY RINSE TANK 1/2	1
9	400 10022	ASSY G TYPE UPPER RINSE PIPE	1
10	400 80002	NUT 1/2 BSP SS RINSE BANJO	1
11	600 60053	VACUUM BREAKER 1/2	1
12	600 90028	HOSECLIP COBRA CLIP NO. 17	5
13	88461	MS HX SS 304 M6 X 12	3
14	1894	GASKET-BULKHEAD FITTING	2
15	400 10047	ASSY RINSE BANJO 1/2	1
16	ASS 6	HOSECLIP ASS 6	2
17	600 90024	HOSECLIP COBRA CLIP NO.16	3
18	600 30088	THERMOSTAT TY60/R-95C [with E bracket]	1
19	600 80052	MS PAN SLOT ZP M3X6	1
20	3342	SOLENOID VALVE GL 1 WAY 90o	2
21	1247	INLET SOLENOID SUPPORT	2
22	1246	BRACKET SOLENOID SUPPORT	2



Date	Change	Issue
18-02-03	CHANGE HOSECLIP COBRA CLIPS	1-N



WASHTECH®
PROFESSIONAL WASH SYSTEMS

414 ROSEBANK ROAD,
AUCKLAND,
Tel (09) 829-0930

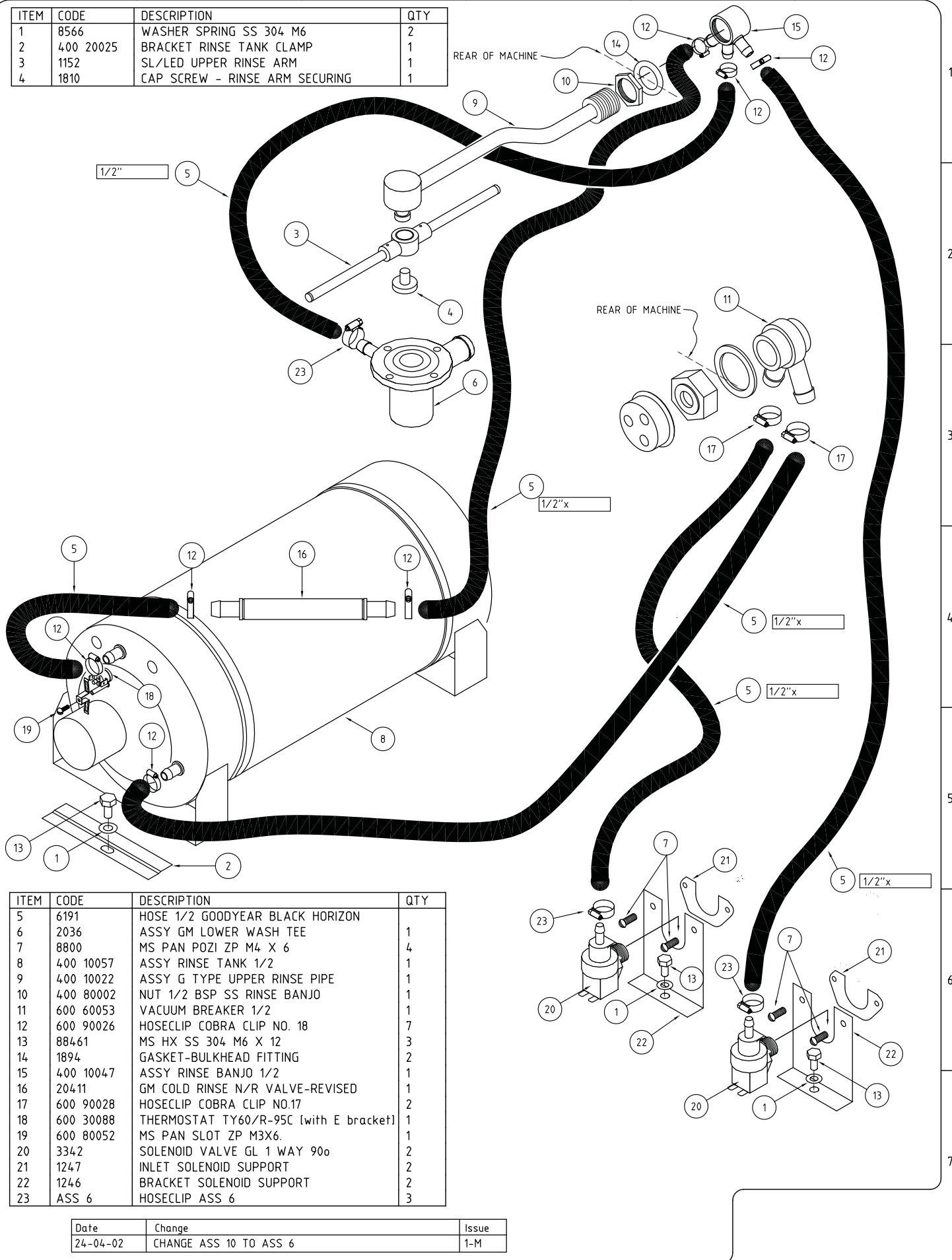
PO Box 90-548
NEW ZEALAND
Fax (09) 829-0930

Drawing No: GM0021

ISSUE NO. 1	Rev. N	Description: RINSE SYSTEM GLASSWASHER GM WASHTECH ©Washtech Ltd, October 2015	Scale 1:1	Units: mm	Proj. 	Tolerance: ±0.5 ±1.0	Checked by:	Approved by:
Issue Date: 18-02-03			Material:			FINISH:		
						Drawn by: B.A.E. Drawing No: GM0021		

DO NOT SCALE - IF IN DOUBT ASK DWG SIZE A4 (180x265)

ITEM	CODE	DESCRIPTION	QTY
1	8566	WASHER SPRING SS 304 M6	2
2	400 20025	BRACKET RINSE TANK CLAMP	1
3	1152	SL/LED UPPER RINSE ARM	1
4	1810	CAP SCREW - RINSE ARM SECURING	1



ITEM	CODE	DESCRIPTION	QTY
5	6191	HOSE 1/2 GOODYEAR BLACK HORIZON	1
6	2036	ASSY GM LOWER WASH TEE	1
7	8800	MS PAN POZI ZP M4 X 6	4
8	400 10057	ASSY RINSE TANK 1/2	1
9	400 10022	ASSY G TYPE UPPER RINSE PIPE	1
10	400 80002	NUT 1/2 BSP SS RINSE BANJO	1
11	600 60053	VACUUM BREAKER 1/2	1
12	600 90026	HOSECLIP COBRA CLIP NO. 18	7
13	88461	MS HX SS 304 M6 X 12	3
14	1894	GASKET-BULKHEAD FITTING	2
15	400 10047	ASSY RINSE BANJO 1/2	1
16	20411	GM COLD RINSE N/R VALVE-REVISED	1
17	600 90028	HOSECLIP COBRA CLIP NO.17	2
18	600 30088	THERMOSTAT TY60/R-95C [with E bracket]	1
19	600 80052	MS PAN SLOT ZP M3X6	1
20	3342	SOLENOID VALVE GL 1 WAY 90o	2
21	1247	INLET SOLENOID SUPPORT	2
22	1246	BRACKET SOLENOID SUPPORT	2
23	ASS 6	HOSECLIP ASS 6	3

Date	Change	Issue
24-04-02	CHANGE ASS 10 TO ASS 6	1-M



WASHTECH®
PROFESSIONAL WASH SYSTEMS

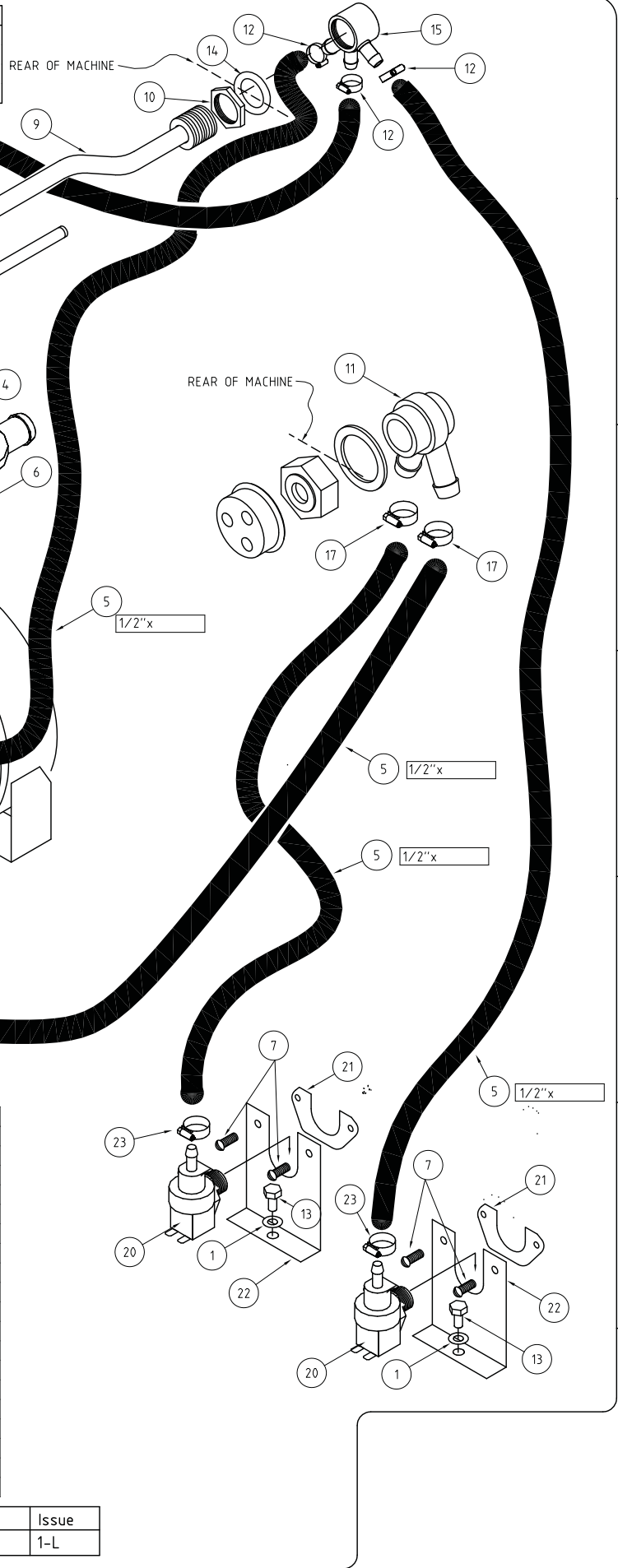
414 ROSEBANK ROAD,
AUCKLAND,
Tel (09) 829-0930

PO Box 90-548
NEW ZEALAND
Fax (09) 829-0930

GM0021

ISSUE NO. 1	Rev. M	Description: RINSE SYSTEM GLASSWASHER GM WASHTECH ©Washtech Ltd, October 2015	Scale 1:1	Units: mm	Proj: 	Tolerance: ±0.5 ±1.0	Checked by:	Approved by:
Issue Date: 24-04-02			Material:				Drawn by: B.A.E	
			FINISH:				Drawing No: GM0021	

ITEM	CODE	DESCRIPTION	QTY
1	8566	WASHER SPRING SS 304 M6	2
2	400 20025	BRACKET RINSE TANK CLAMP	1
3	1152	SL/LED UPPER RINSE ARM	1
4	1810	CAP SCREW - RINSE ARM SECURING	1



ITEM	CODE	DESCRIPTION	QTY
5	6191	HOSE 1/2 GOODYEAR BLACK HORIZON	1
6	2036	ASSY GM LOWER WASH TEE	1
7	8800	MS PAN POZI ZP M4 X 6	4
8	400 10057	ASSY RINSE TANK 1/2	1
9	400 10022	ASSY G TYPE UPPER RINSE PIPE	1
10	400 80002	NUT 1/2 BSP SS RINSE BANJO	1
11	600 60053	VACUUM BREAKER 1/2	1
12	600 90026	HOSECLIP COBRA CLIP NO. 18	7
13	88461	MS HX SS 304 M6 X 12	3
14	1894	GASKET-BULKHEAD FITTING	2
15	400 10047	ASSY RINSE BANJO 1/2	1
16	20411	GM COLD RINSE N/R VALVE-REVISED	1
17	600 90028	HOSECLIP COBRA CLIP NO.17	3
18	600 30088	THERMOSTAT TY60/R-95C (with E bracket)	1
19	600 80052	MS PAN SLOT ZP M3X6	1
20	3342	SOLENOID VALVE GL 1 WAY 90o	2
21	1247	INLET SOLENOID SUPPORT	2
22	1246	BRACKET SOLENOID SUPPORT	2
23	600 90024	HOSECLIP COBRA CLIP NO. 16	2

Date	Change	Issue
21-01-02	CHANGE ITEM 3 TO 1152	1-L

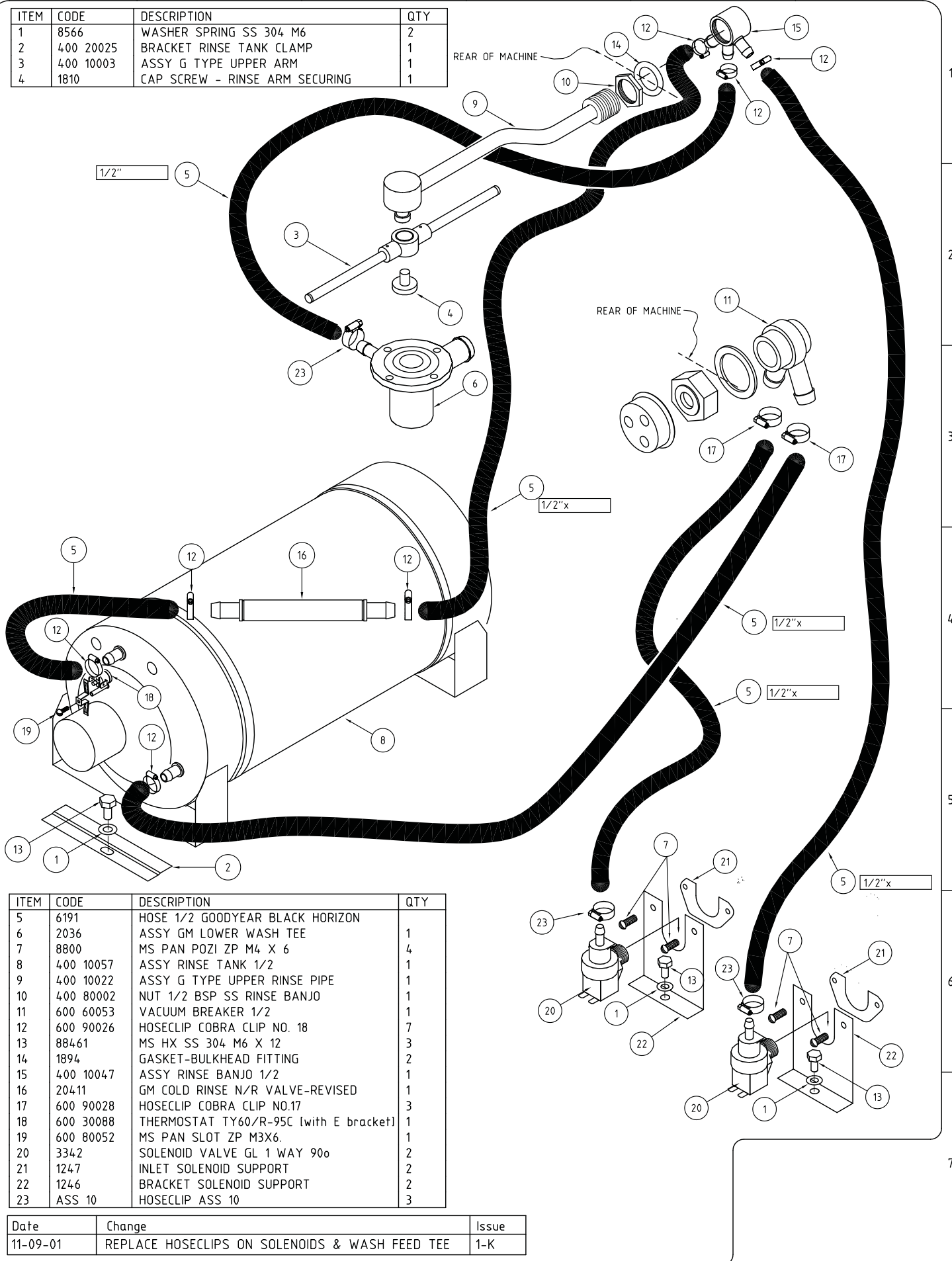

5 CRONULLA CT, SLACKS CREEK, QUEENSLAND 4127, AUSTRALIA
WASHTECH®
414 ROSEBANK ROAD, PO Box 90-548 AUCKLAND, NEW ZEALAND
PH (07) 3290-2877 FAX (07) 3290-2974
PROFESSIONAL WASH SYSTEMS PH (09) 829-0930 FAX (09) 829-0935

GM0021

ISSUE NO.	Rev.	Description:	Scale	Units:	Proj:	Tolerance:	Checked by:	Approved by:
1	L	RINSE SYSTEM GLASSWASHER GM WASHTECH	1:1	mm		±0.5 ±1.0		
Issue Date:		©Washtech Ltd, October 2015	Material:					Drawn by:
21-01-02			FINISH:					B.A.E
								Drawing No:
								GM0021

DO NOT SCALE - IF IN DOUBT ASK DWG SIZE A4 (180x265)

ITEM	CODE	DESCRIPTION	QTY
1	8566	WASHER SPRING SS 304 M6	2
2	400 20025	BRACKET RINSE TANK CLAMP	1
3	400 10003	ASSY G TYPE UPPER ARM	1
4	1810	CAP SCREW - RINSE ARM SECURING	1



ITEM	CODE	DESCRIPTION	QTY
5	6191	HOSE 1/2 GOODYEAR BLACK HORIZON	1
6	2036	ASSY GM LOWER WASH TEE	1
7	8800	MS PAN POZI ZP M4 X 6	4
8	400 10057	ASSY RINSE TANK 1/2	1
9	400 10022	ASSY G TYPE UPPER RINSE PIPE	1
10	400 80002	NUT 1/2 BSP SS RINSE BANJO	1
11	600 60053	VACUUM BREAKER 1/2	1
12	600 90026	HOSECLIP COBRA CLIP NO. 18	7
13	88461	MS HX SS 304 M6 X 12	3
14	1894	GASKET-BULKHEAD FITTING	2
15	400 10047	ASSY RINSE BANJO 1/2	1
16	20411	GM COLD RINSE N/R VALVE-REVISED	1
17	600 90028	HOSECLIP COBRA CLIP NO.17	3
18	600 30088	THERMOSTAT TY60/R-95C (with E bracket)	1
19	600 80052	MS PAN SLOT ZP M3X6.	1
20	3342	SOLENOID VALVE GL 1 WAY 90o	2
21	1247	INLET SOLENOID SUPPORT	2
22	1246	BRACKET SOLENOID SUPPORT	2
23	ASS 10	HOSECLIP ASS 10	3

Date	Change	Issue
11-09-01	REPLACE HOSECLIPS ON SOLENOIDS & WASH FEED TEE	1-K

UNIT 1, 27 ALLGAS STREET, SLACKS CREEK,
QUEENSLAND 4127, AUSTRALIA
PH: (07) 3290-2877 FX: (07) 3290-2974

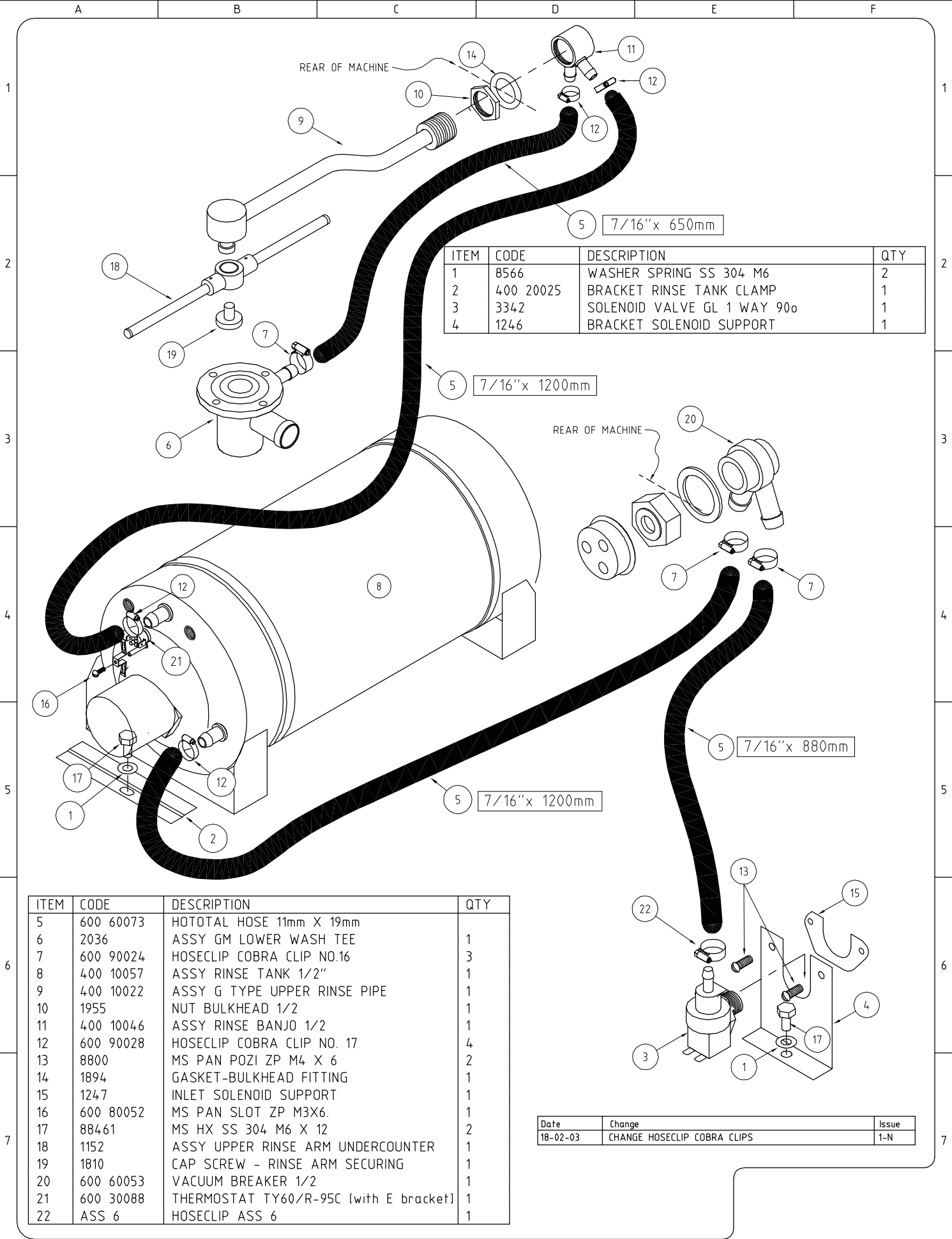
WashTech ©

9 CORBAN AVENUE, PO Box 21-342
HENDERSON, AUCKLAND, NEW ZEALAND
PH: (09) 837-2372 FX: (09) 837-0880

GM0021

ISSUE NO. 1	Rev. K	Description: RINSE SYSTEM GLASSWASHER GM WASHTECH
Issue Date: 11-09-01		©Washtech Ltd, October 2015

Scale 1:1	Units: mm	Proj: 	Tolerance: ±0.5 ±1.0	Checked by:
Material:				Drawn by: B.A.E
FINISH:				Drawing No: GM0021



WASHTECH®
PROFESSIONAL WASH SYSTEMS

414 ROSEBANK ROAD,
AUCKLAND,
Tel (09) 829-0930

PO Box 90-548
NEW ZEALAND
Fax (09) 829-0930

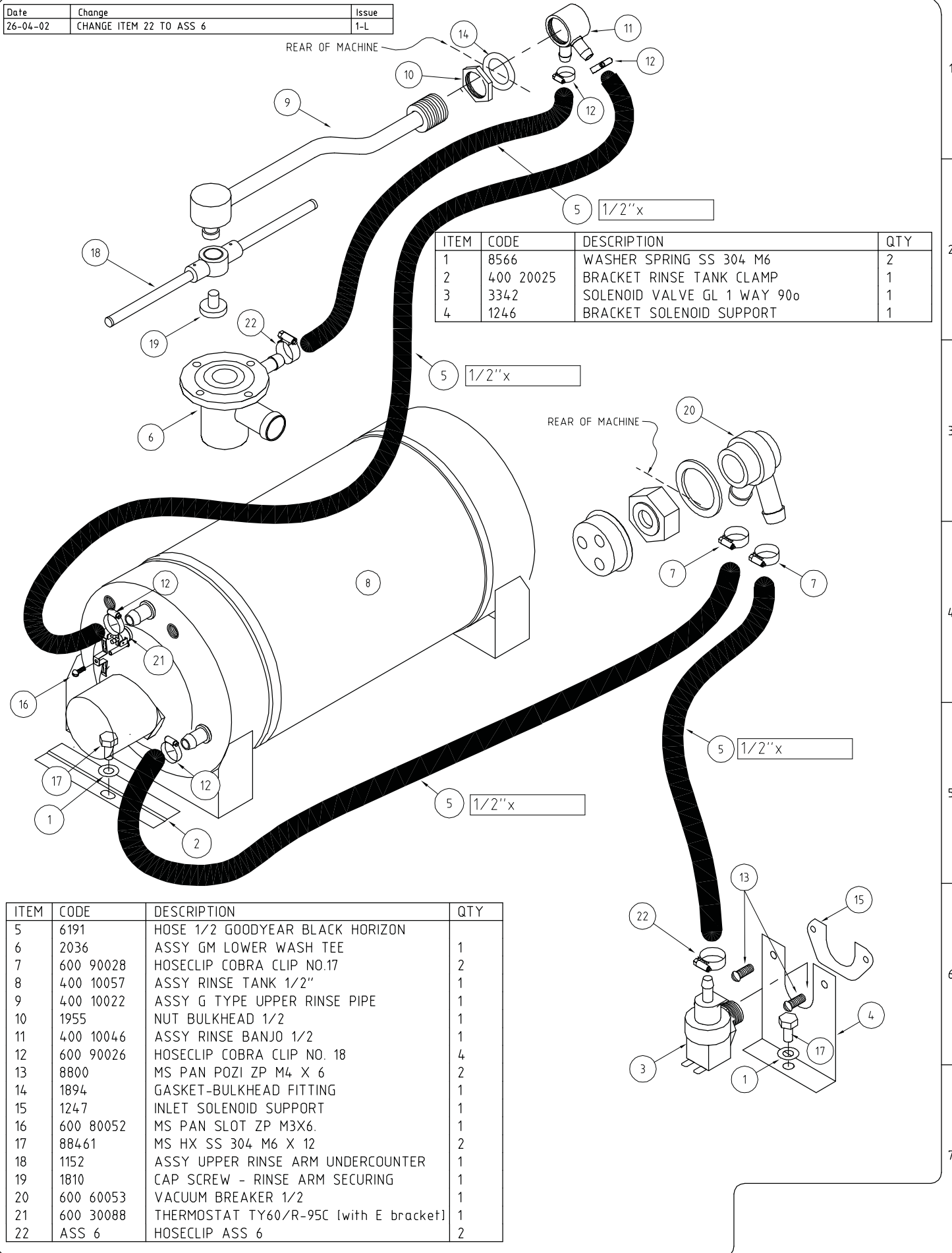
GM0020

ISSUE NO. 1 Rev. M	Description: RINSE SYSTEM GM(W) DISHWASHER	Scale NTS	Units: mm		Proj	Tolerance: ±0.5 ±1.0	Checked by:	Approved by:
Issue Date: 18-02-03	©Washtech Ltd, October 2015	Material:	FINISH:					Drawn by: B.A.E. Drawing No: GM0020

Date	Change	Issue
26-04-02	CHANGE ITEM 22 TO ASS 6	1-L

REAR OF MACHINE

ITEM	CODE	DESCRIPTION	QTY
1	8566	WASHER SPRING SS 304 M6	2
2	400 20025	BRACKET RINSE TANK CLAMP	1
3	3342	SOLENOID VALVE GL 1 WAY 90o	1
4	1246	BRACKET SOLENOID SUPPORT	1



ITEM	CODE	DESCRIPTION	QTY
5	6191	HOSE 1/2 GOODYEAR BLACK HORIZON	1
6	2036	ASSY GM LOWER WASH TEE	1
7	600 90028	HOSECLIP COBRA CLIP NO.17	2
8	400 10057	ASSY RINSE TANK 1/2"	1
9	400 10022	ASSY G TYPE UPPER RINSE PIPE	1
10	1955	NUT BULKHEAD 1/2	1
11	400 10046	ASSY RINSE BANJO 1/2	1
12	600 90026	HOSECLIP COBRA CLIP NO. 18	4
13	8800	MS PAN POZI ZP M4 X 6	2
14	1894	GASKET-BULKHEAD FITTING	1
15	1247	INLET SOLENOID SUPPORT	1
16	600 80052	MS PAN SLOT ZP M3X6.	1
17	88461	MS HX SS 304 M6 X 12	2
18	1152	ASSY UPPER RINSE ARM UNDERCOUNTER	1
19	1810	CAP SCREW - RINSE ARM SECURING	1
20	600 60053	VACUUM BREAKER 1/2	1
21	600 30088	THERMOSTAT TY60/R-95C [with E bracket]	1
22	ASS 6	HOSECLIP ASS 6	2



WASHTECH®
PROFESSIONAL WASH SYSTEMS

414 ROSEBANK ROAD,
AUCKLAND,
Tel (09) 829-0930

PO Box 90-548
NEW ZEALAND
Fax (09) 829-0930

GM0020

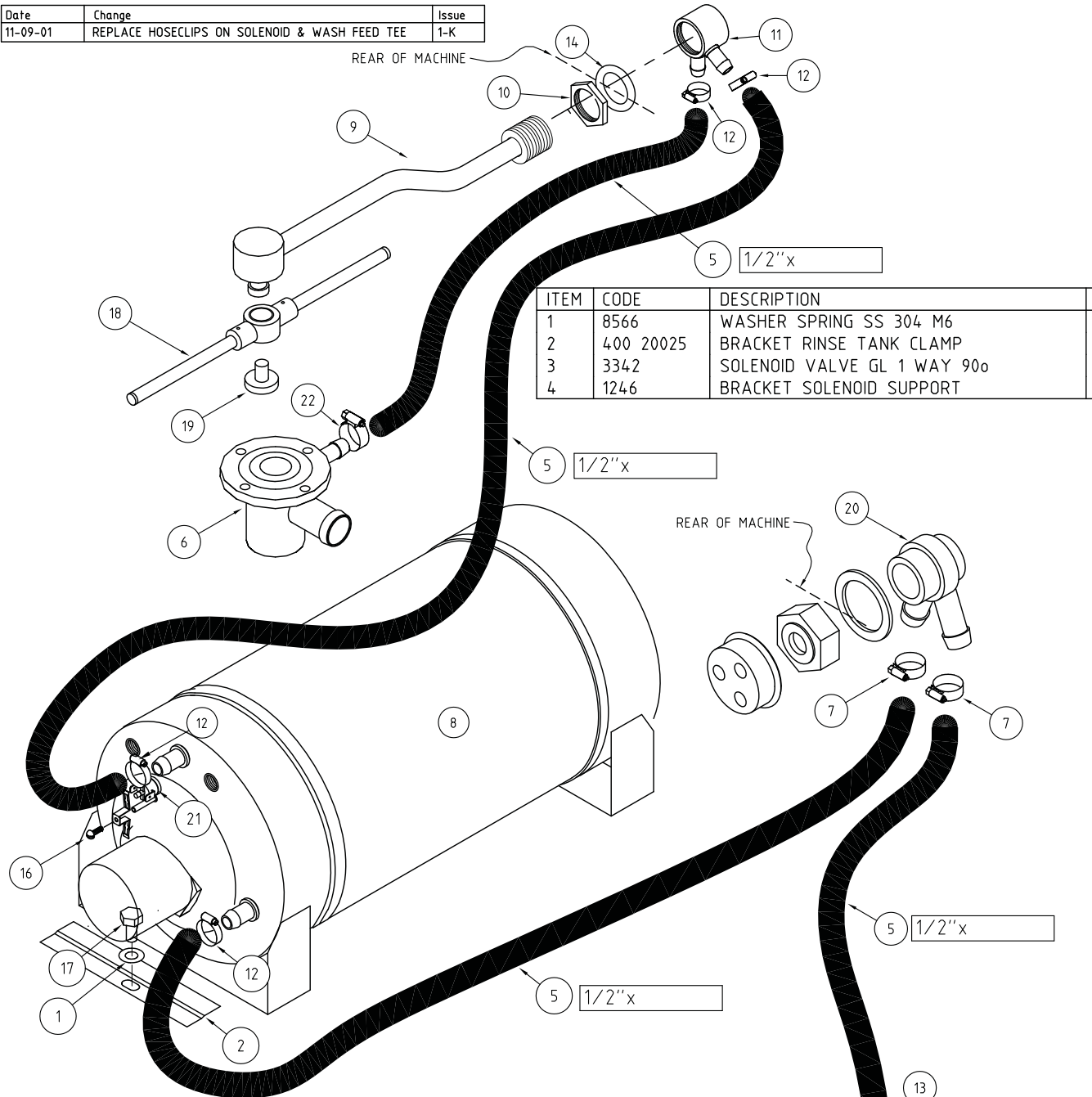
ISSUE NO. 1	Rev. L	Description: RINSE SYSTEM GM(W) DISHWASHER	Scale NTS	Units: mm	Proj. 	Tolerance: ±0.5 ±1.0	Checked by:	Approved by:
Issue Date: 26-04-02		©Washtech Ltd, October 2015	Material:		FINISH:			Drawn by: B.A.E
							Drawing No: GM0020	

DO NOT SCALE - IF IN DOUBT ASK DWG SIZE A4 (180x265)

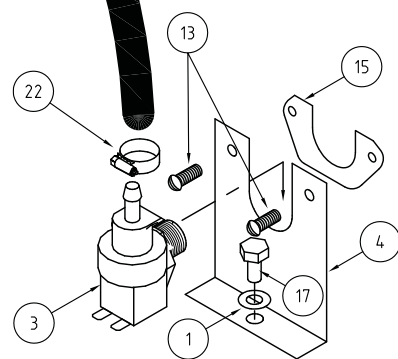
Date	Change	Issue
11-09-01	REPLACE HOSECLIPS ON SOLENOID & WASH FEED TEE	1-K

REAR OF MACHINE

ITEM	CODE	DESCRIPTION	QTY
1	8566	WASHER SPRING SS 304 M6	2
2	400 20025	BRACKET RINSE TANK CLAMP	1
3	3342	SOLENOID VALVE GL 1 WAY 90o	1
4	1246	BRACKET SOLENOID SUPPORT	1



ITEM	CODE	DESCRIPTION	QTY
5	6191	HOSE 1/2 GOODYEAR BLACK HORIZON	1
6	2036	ASSY GM LOWER WASH TEE	1
7	600 90028	HOSECLIP COBRA CLIP NO.17	2
8	400 10057	ASSY RINSE TANK 1/2"	1
9	400 10022	ASSY G TYPE UPPER RINSE PIPE	1
10	1955	NUT BULKHEAD 1/2	1
11	400 10046	ASSY RINSE BANJO 1/2	1
12	600 90026	HOSECLIP COBRA CLIP NO. 18	4
13	8800	MS PAN POZI ZP M4 X 6	2
14	1894	GASKET-BULKHEAD FITTING	1
15	1247	INLET SOLENOID SUPPORT	1
16	600 80052	MS PAN SLOT ZP M3X6.	1
17	88461	MS HX SS 304 M6 X 12	2
18	1152	ASSY UPPER RINSE ARM UNDERCOUNTER	1
19	1810	CAP SCREW - RINSE ARM SECURING	1
20	600 60053	VACUUM BREAKER 1/2	1
21	600 30088	THERMOSTAT TY60/R-95C [with E bracket]	1
22	ASS 10	HOSECLIP ASS 10	2



UNIT 1, 27 ALLGAS STREET, SLACKS CREEK,
QUEENSLAND 4127, AUSTRALIA
PH: (07) 3290-2877 FX: (07) 3290-2974

WashTech ©

9 CORBAN AVENUE, PO Box 21-342
HENDERSON, AUCKLAND, NEW ZEALAND
PH: (09) 837-2372 FX: (09) 837-0880

GM0020

ISSUE NO. 1	Rev. K	Description: RINSE SYSTEM GM(W) DISHWASHER	Scale NTS	Units: mm	Proj. Tolerance: ±0.5 ±1.0	Checked by:
Issue Date: 11-09-01	©Washtech Ltd, October 2015		Material:			Drawn by: B.A.E
			FINISH:			Drawing No: GM0020

DO NOT SCALE - IF IN DOUBT ASK DWG SIZE A4 (180x265)