

GM

Series 5

UNDERCOUNTER GLASSWASHER



Parts Manual

Spare Parts

DESCRIPTION	PART NO
Cabinet & Door	
Control Panel Label	173 71001
Door Assembly	123 10014
Door Catch Cap Nut	400 30031
Door Catch Coil Spring	400 90024
Door Catch Face Bolt	400 30030
Door Catch Plunger	400 30032
Door Seal Adhesive Strip (500mm long)	600 90066
Door Seal Retainer Bracket	123 10044
Rack Adaptor	173 30001
Controls & Indicators	
Cold Rinse Switch	600 30102
Cord Set 15A	600 30255
Door Reed Switch	600 30183
Power Light	600 30161
Power Switch	600 30214
Pressure Switch	600 30266
Ready Light	600 30162
Relay	600 30080
Relay Base	600 30081
Run Light	600 30163
Start Switch	600 30101
Test Switch	3035
Timer	32621 001
Heating Components	
Over Temperature Thermostat	600 30088
Rinse Element 3 KW	600 30249
Rinse Tank Assembly	400 10129
Rinse Thermostat	3020
Wash Element 2.5 KW	600 30160
Wash Thermostat	30201

Spare Parts

DESCRIPTION	PART NO
Hoses & Fittings	
Hose Clamp 6 mm	ASS 6
Hose Clamp 16 mm	ASS 16
Pressure Switch Hose (specify length)	3067
Rinse Hose (specify length)	600 60073
Wash Pump Inlet Hose UHB 25	600 90074
Wash Pump Outlet Hose	400 90121
Pumps & Solenoids	
Detergent Pump	600 30094
Solenoid Valve	3342
Wash Pump	3910
Wash Tank Components	
Drain Upstand	400 90119
Fixed Jet Rinse Arm Assembly	400 10108
Pressure Bell	400 90093
Pressure Bell O Ring	ARP 205
Rinse Banjo 1/2 Assembly	400 10047
Rinse Nozzle Closed Head	600 40050
Rinse Nozzle Opened Head	600 40049
Rinse Nozzle O-Ring (OR R6 NBR)	600 40051
Wash Arm Column Assembly	173 10009
Wash/Lower Rinse Arm Assembly	600 40005
Wash Nozzle Closed Head	600 40047
Wash Nozzle Opened head	600 40046
Wash Nozzle O-Ring (OR 2050 NBR)	600 40048
Wash Pump Inlet Filter	600 40001

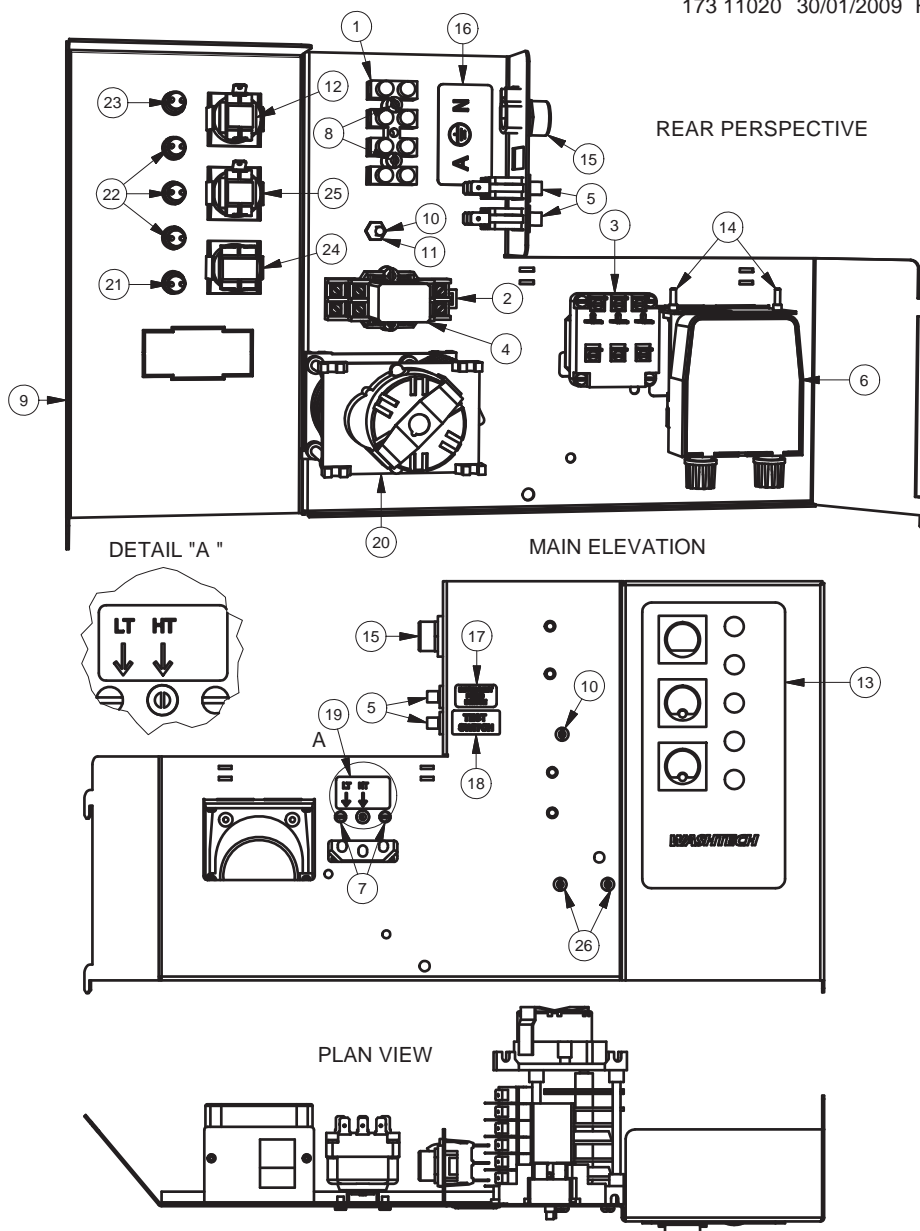
Note:

For more parts look in the section “Assembly Diagrams”.

Assembly Diagrams

WASHTECH GM5 WIRING TRAY ASSEMBLY

173 11020 30/01/2009 REV 3-D

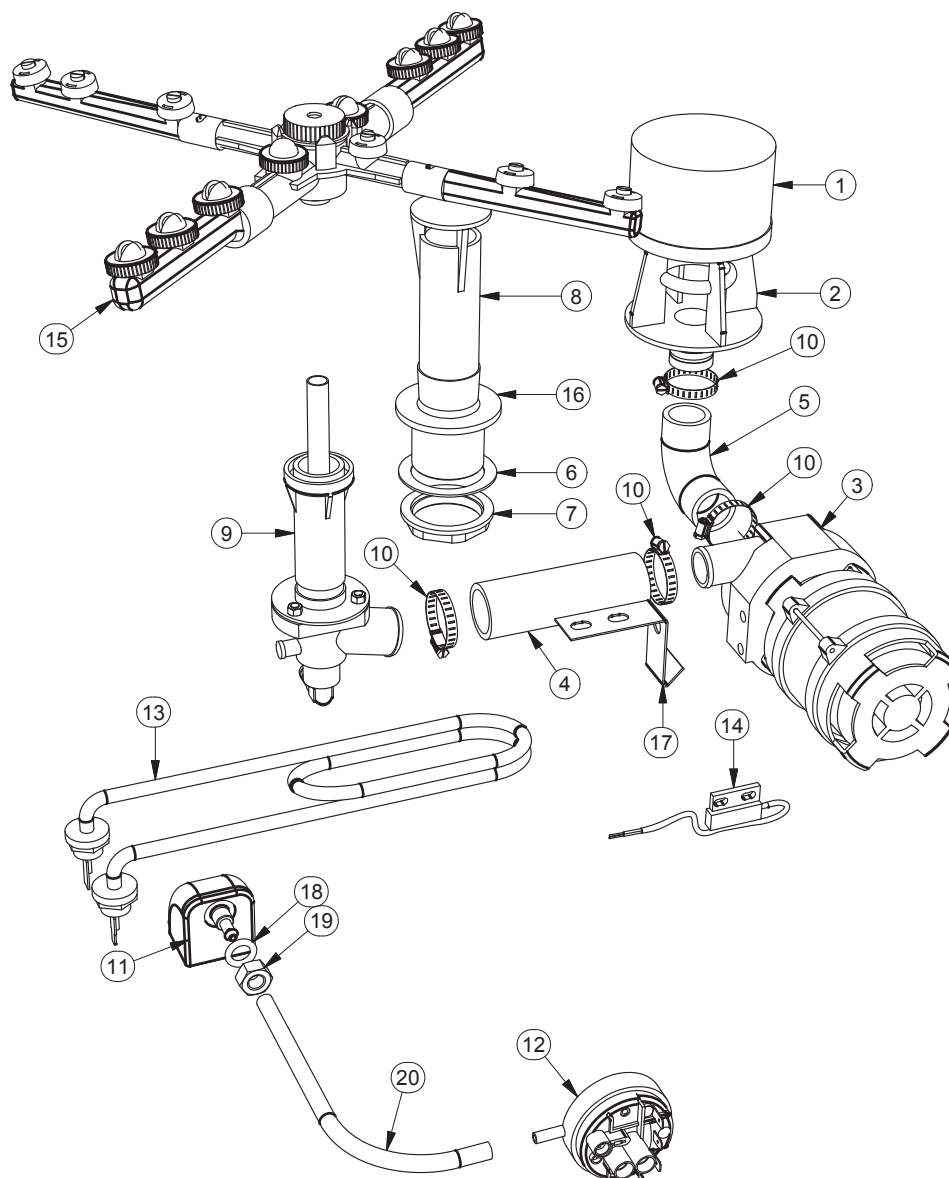


Parts List			
ITEM	PART NUMBER	DESCRIPTION	QTY
1	32271	TERMINAL STRIP 4 WAY	1
2	600 30081	BASE 2 POLE RELAY	1
3	3020	3 POLE THERMOSTAT	1
4	600 30080	RELAY 2 POLE (240VAC)	1
5	3035	SWITCH SINGLE POLE BIASED BLACK	2
6	600 30094	PERI PUMP 1.5L/H SEKO-KIT	1
7	8800	MS PAN POZI ZP M4x6	2
8	8802	MS PAN POZI ZP M4x25	4
9	173 10005	GM WIRING TRAY SUB-ASSY	1
10	8816	MS RH BRASS 3/16 X 3/4	1
11	8151	NUT HX BRASS 3/16" PRESSED	1
12	600 30101	SWITCH START ROLD-SP MOMENTARY	1

Parts List			
ITEM	PART NUMBER	DESCRIPTION	QTY
13	173 71001	GM5 (W) CONTROL PANEL LABEL	1
14	600 80018	MS RH ZP M3x16	2
15	3222	LITTLE GRIPPERS 5/8 + NUT	1
16	REF	POWER TERMINAL LABEL	1
17	REF	LABEL DETERGENT PRIME SWITCH	1
18	REF	LABEL TEST SWITCH	1
19	REF	LABEL THERMOSTAT ADJUSTMENTS	1
20	32621 001	TIMER 60SEC 6 CAM RAPID START	1
21	600 30161	LENS & NEON ASSY (RED) 12mm	1
22	600 30162	LENS & NEON ASSY (AMBER) 12mm	3
23	600 30163	LENS & NEON ASSY (GREEN) 12mm	1
24	600 30214	SWITCH POWER 2P NO/NO LATCHED	1
25	600 30102	SWITCH C/RINSE ROLD SPCO	1
26	8801	MS PAN POZI ZP M4x12	2

GM5 WASH ASSEMBLY

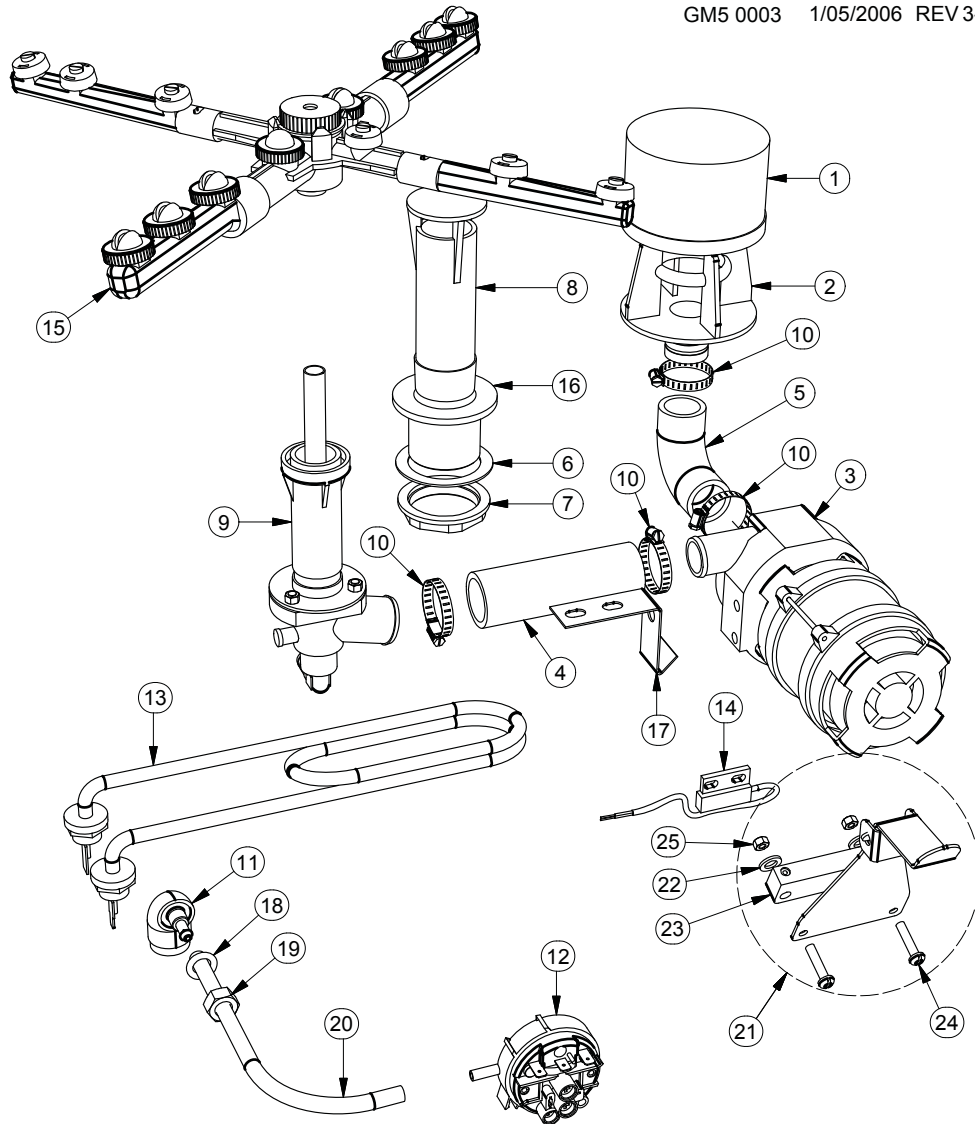
GM5 0003 5/08/2008 REV 3-E



Parts List			
ITEM	PART NUMBER	DESCRIPTION	QTY
1	600 40001	GM5 WASH PUMP FILTER	1
2	600 40002	GM5 WASH PUMP INLET	1
3	3910	PUMP WASH GM 0.15HP 1ph 240v	1
4	400 90121	HOSE GM5 WASH PUMP OUTLET	1
5	400 90012	HOSE GLV & UD UPPER WASH	0.5
6	1896	GASKET FOR 40mm DRAIN WASTE	1
7	6037	BACKNUT 126 x 40mm	1
8	400 90119	GM5 UPSTAND 132mm LONG	1
9	173 10009	GM5/GH WASH COLUMN ASSY	1
10	ASS16	HOSE CLAMP	4
11	400 90135	SQUARE PRESSURE BELL CASTING	1
12	600 30266	METAFLEX PRESSURE SWITCH	1
13	600 30160	ELEMENT 2500W BENT ELEMENT	1
14	600 30183	REED SWITCH STEM	1
15	600 40005	KROMO WASH ARM ASSEMBLY	1
16	400 30042	WASTE DRAIN PLASTIC 40mm PLASTIC	1
17	173 20005	GM WASH PUMP BRACKET	1
18	ARP 205	O-RING	1
19	600 80009	M10 SS HX NUT	1
20	3067	PRESSURE SWITCH HOSE	110mm

GM5 WASH ASSEMBLY

GM5 0003 1/05/2006 REV 3-B



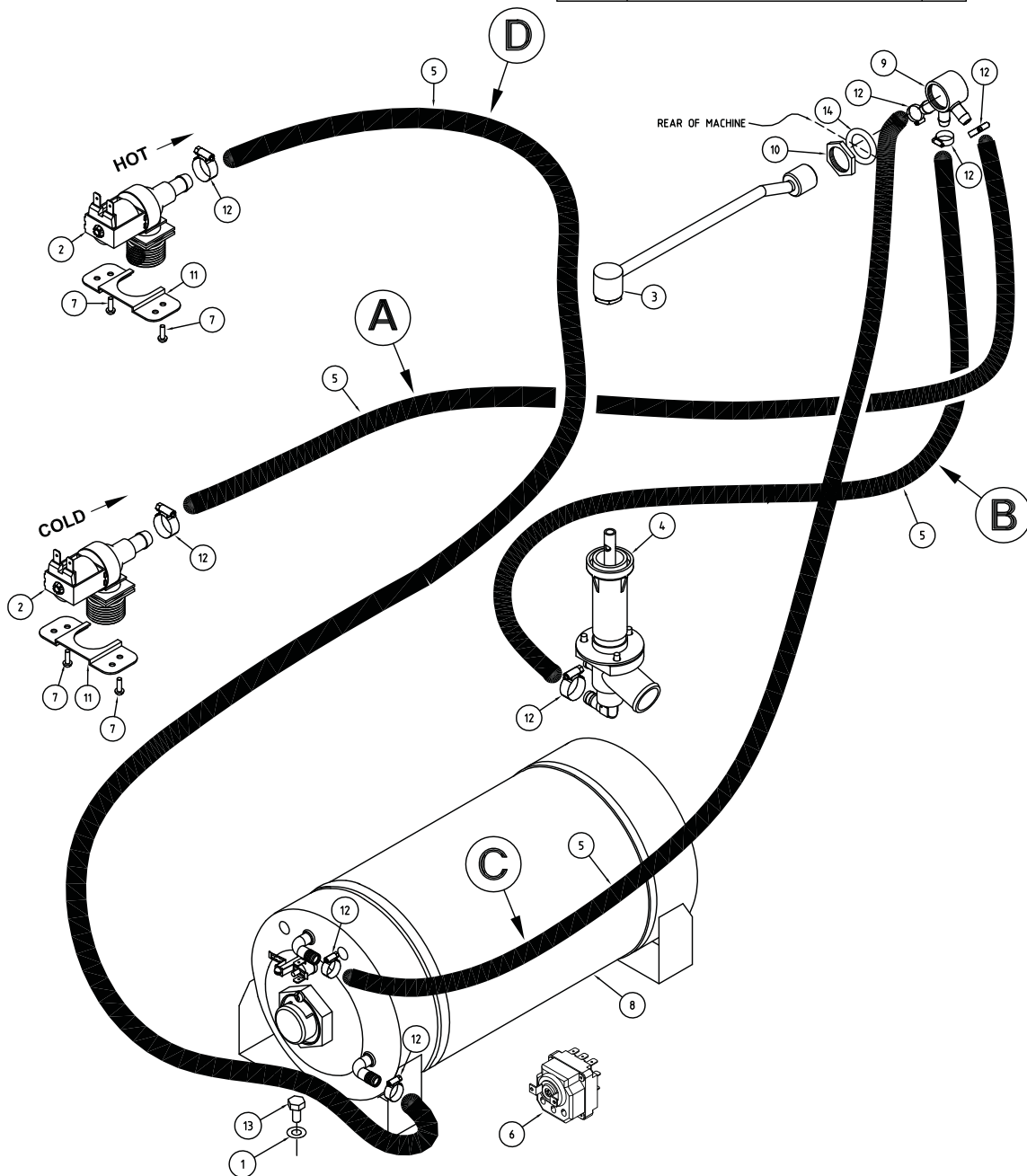
Parts List			
ITEM	PART NUMBER	DESCRIPTION	QTY
1	600 40001	GM5 WASH PUMP FILTER	1
2	600 40002	GM5 WASH PUMP INLET	1
3	3910	PUMP WASH GM 0.15HP 1ph 240v	1
4	400 90121	HOSE GM5 WASH PUMP OUTLET	1
5	600 90074	HOSE WASH PUMP UHB25	1
6	1896	GASKET FOR 40mm DRAIN WASTE	1
7	6037	BACKNUT 126 x 40mm	1
8	400 90119	GM5 UPSTAND 132mm LONG	1
9	173 10009	KROMO WASH ARM SPIGOT ASSY	1
10	ASS16	HOSE CLAMP	4
11	400 90093	PRESSURE BELL CAP	1
12	600 30252	PRESSURE SWITCH 50/25mm	1
13	600 30160	ELEMENT 2500W BENT ELEMENT	1
14	600 30183	REED SWITCH STEM	1
15	600 40005	KROMO WASH ARM ASSEMBLY	1
16	400 30042	WASTE DRAIN PLASTIC 40mm PLASTIC	1
17	173 20005	GM WASH PUMP BRACKET	1
18	ARP 205	O-RING	1
19	600 80009	M10 SS HX NUT	1
20	3067	PRESSURE SWITCH HOSE	110mm
21	173 10041	GM5 DOOR MAGNET ASSY	1
22	85651	M5 S/S PLAIN WASHER	2
23	600 30182	MAGNET	1
24	600 80089	MS SS RH M4x20	2
25	600 80079	M4 SS NYLOC NUT	2

GM5 (W) RINSE SYSTEM

GM5 0002 31-10-06 3D

ITEM	CODE	DESCRIPTION	QTY
1	8566	WASHER SPRING SS 304 M6	1
2	3342	SOLENOID VALVE GL 1 WAY 90o	2
3	400 10108	FIXED JET RINSE ARM ASSY	1
4	173 10009	GM5 WASH COLUMN ASSY	1
5	600 60073	HOTOTAL HOSE 11mm X 12mm	1
6	3020	3 POLE THERMOSTAT	1
7	8801	MS PAN POZI ZP M4 X 12	4
8	400 10129	3KW ASSY R/TANK 1/2" 1 THERMOSTAT	1
9	400 10047	ASSY RINSE BANJO 1/2"	1
10	1955	NUT BULK HEAD 1/2"	1
11	1247	INLET SOLENOID SUPPORT	2
12	ASS06	HOSECLIP ASS06	8
13	88461	MS HX SS 304 M6 X 12	1
14	1894	GASKET-BULKHEAD FITTING	1

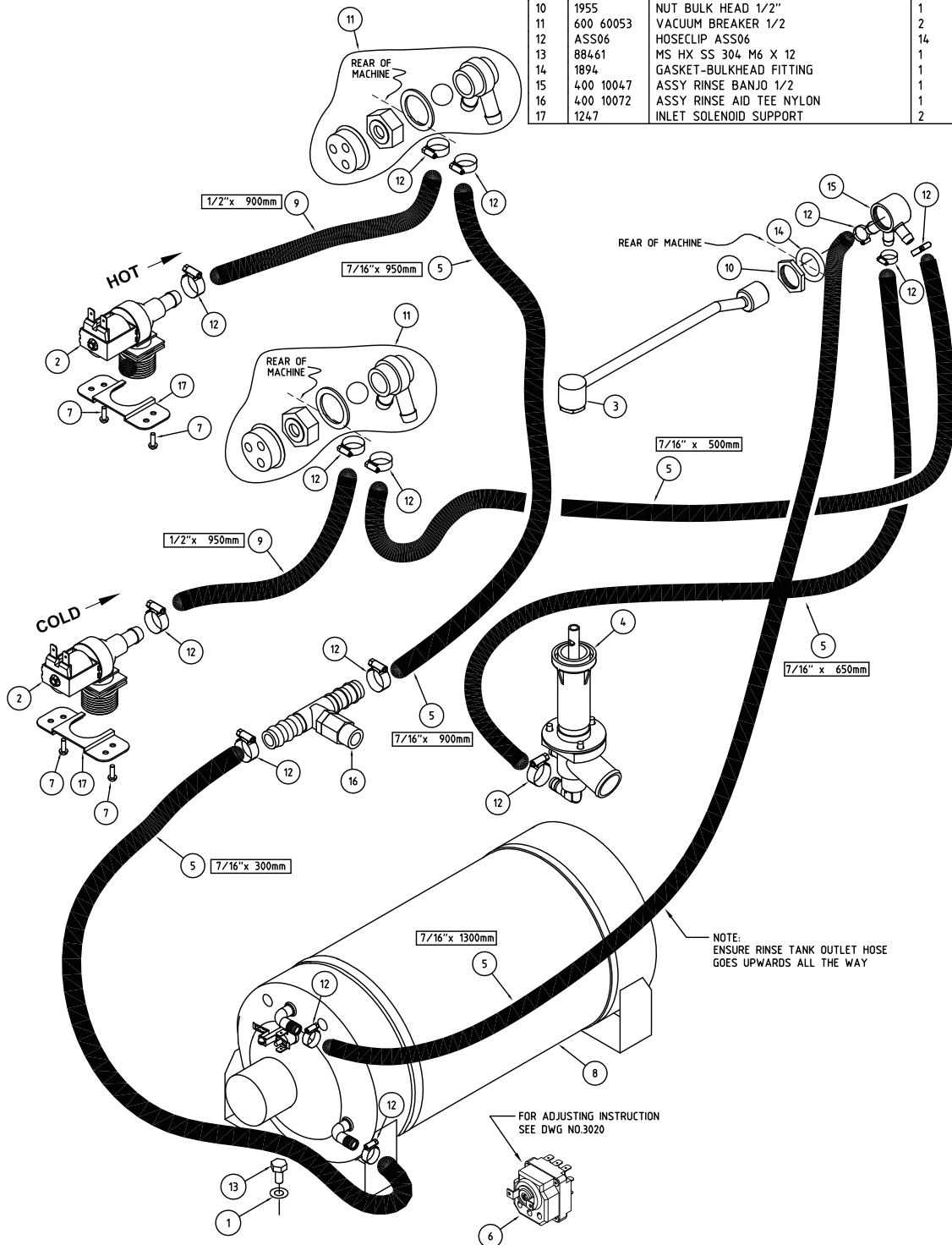
Date	Change	Issue
31-10-06	CHANGE RINSE TANK	3-D



GM5 (W) RINSE SYSTEM

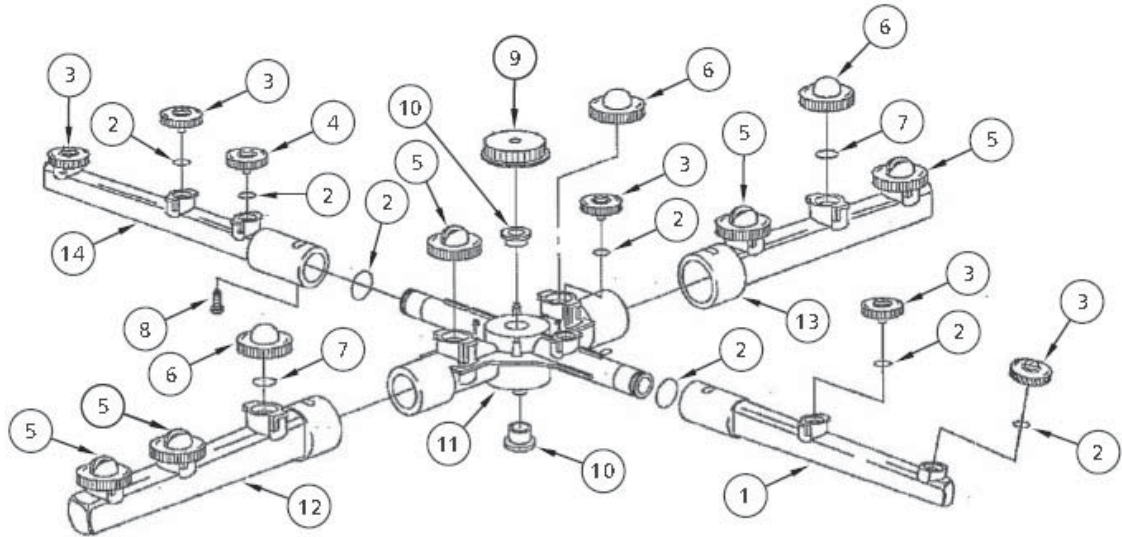
GM5 0002 22-09-05 3 A

ITEM	CODE	DESCRIPTION	QTY
1	8566	WASHER SPRING SS 304 M6	1
2	3342	SOLENOID VALVE GL 1 WAY 90°	2
3	400 10108	FIXED JET RINSE ARM ASSY	1
4	173 10009	KROMO WASH ARM SPIGOT ASSY	1
5	600 60073	HOTOTAL HOSE 11mm X 12mm	3.7M
6	3020	3 POLE THERMOSTAT	1
7	8801	MS PAN POZI ZP M4 X 12	4
8	173 10008	GM5 ASSY R/TANK 1/2" 1 THERMOSTAT	1
9	600 60103	NEXSYN 1/2" HOSE	1.85M
10	1955	NUT BULK HEAD 1/2"	1
11	600 60053	VACUUM BREAKER 1/2	2
12	ASS06	HOSECLIP ASS06	14
13	88461	MS HX SS 304 M6 X 12	1
14	1894	GASKET-BULKHEAD FITTING	1
15	400 10047	ASSY RINSE BANJO 1/2	1
16	400 10072	ASSY RINSE AID TEE NYLON	1
17	1247	INLET SOLENOID SUPPORT	2



GM/GH/GL6 WASH ARM ASSY

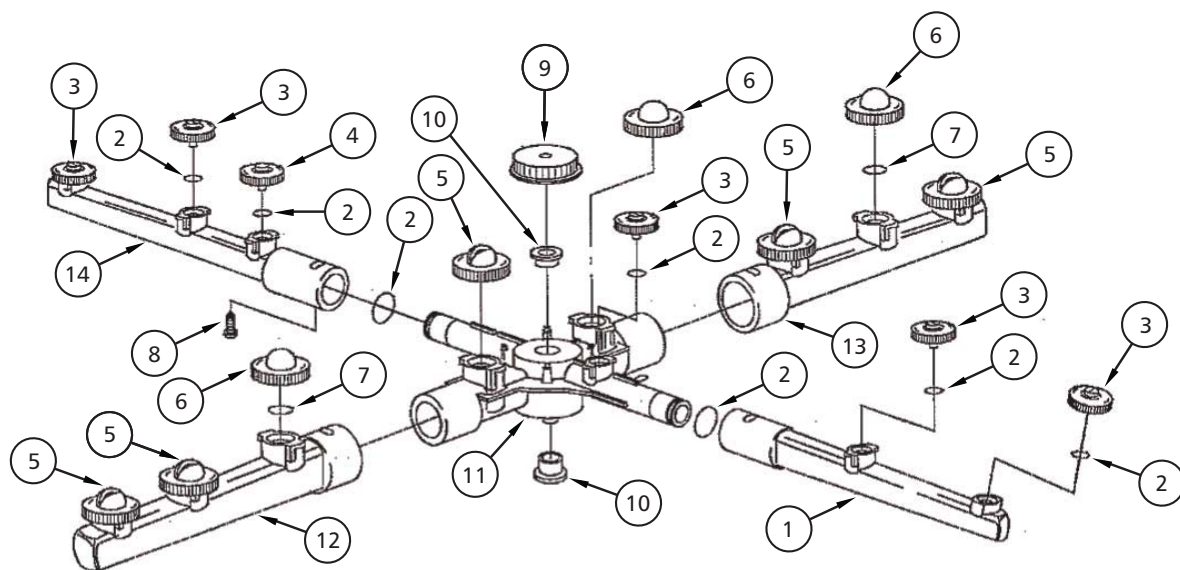
600 40005 06-10-09 1C



ITEM	CODE	DESCRIPTION	QTY
1	REF	2 JET RINSE ARM	1
2	600 40051	011 O-RING	7
3	600 40049	GM5 RINSE JET	4
4	600 40050	GM5 BLIND RINSE JET	1
5	600 40046	GM5 WASH JET	4
6	600 40047	BLIND WASH JET	2
7	600 40048	014 O-RING	6
8	600 40063	ARM SECURING SCREW	1
9	600 40062	THUMB SCREW	1
10	600 40064	BUSH	1
11	REF	WASH ARM CENTRAL CROSS	1
12	REF	WASH ARM "A"	1
13	REF	WASH ARM "B"	1
14	REF	3 JET RINSE ARM	1

GM/GH WASH ARM ASSY

600 40005 24-04-08 1B



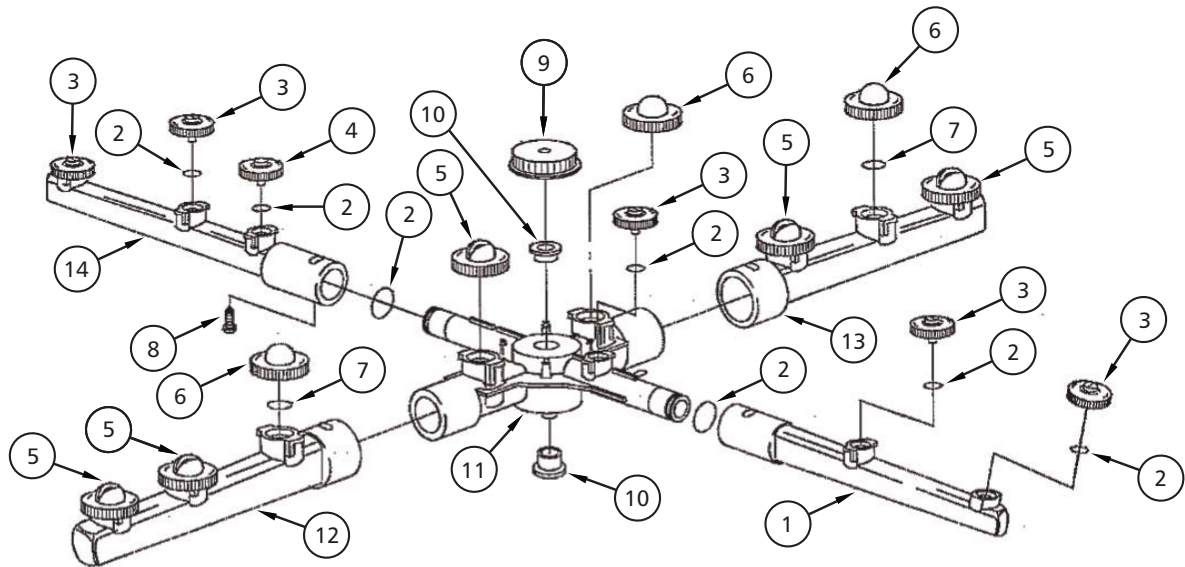
ITEM	CODE	DESCRIPTION	QTY
1	REF	2 JET RINSE ARM	1
2	600 40051	011 O-RING	7
3	600 40049	GM5 RINSE JET	4
4	600 40050	GM5 BLIND RINSE JET	1
5	600 40046	GM5 WASH JET	4
6	600 40047	BLIND WASH JET	2
7	600 40048	014 O-RING	6
8	REF	ARM SECURING SCREW	1
9	REF	THUMB SCREW	1
10	REF	BUSH	1
11	REF	WASH ARM CENTRAL CROSS	1
12	REF	WASH ARM "A"	1
13	REF	WASH ARM "B"	1
14	REF	3 JET RINSE ARM	1

APPROVED
By Alexander Jouk at 11:24 am, 4/24/08

GM WASH ARM ASSY

APPROVED
By idm at 3:55 pm, 10/27/06

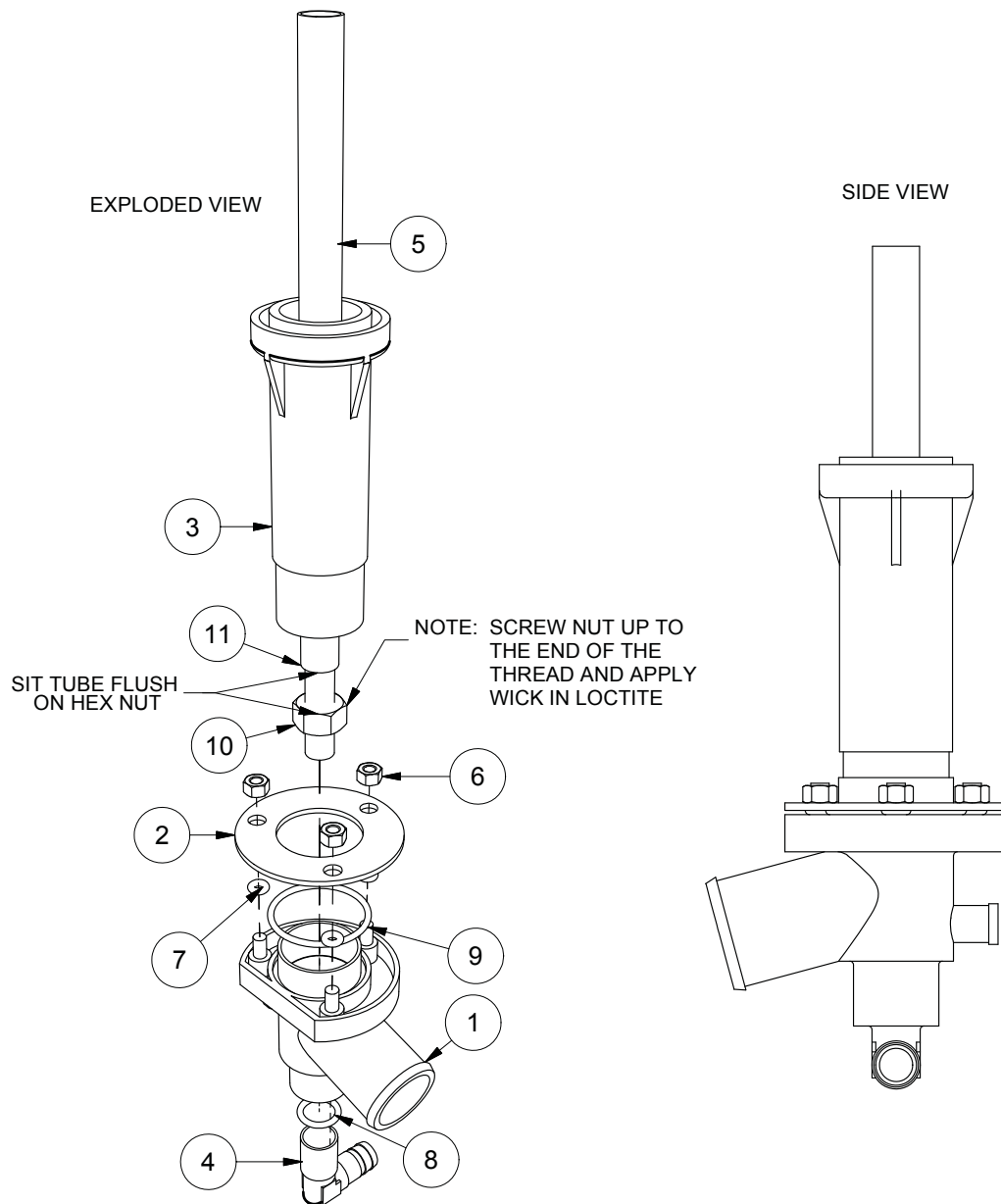
600 40005 27-10-06 1A



ITEM	CODE	DESCRIPTION	QTY
1	REF	2 JET RINSE ARM	1
2	600 40051	011 O-RING	7
3	600 40049	GM5 RINSE JET	4
4	600 40050	GM5 BLIND RINSE JET	1
5	600 40046	GM5 WASH JET	4
6	600 40047	BLIND WASH JET	2
7	600 40048	014 O-RING	6
8	REF	ARM SECURING SCREW	1
9	REF	THUMB SCREW	1
10	REF	BUSH	1
11	REF	WASH ARM CENTRAL CROSS	1
12	REF	WASH ARM "A"	1
13	REF	WASH ARM "B"	1
14	REF	3 JET RINSE ARM	1

GM5/GL6 WASH COLUMN ASSY

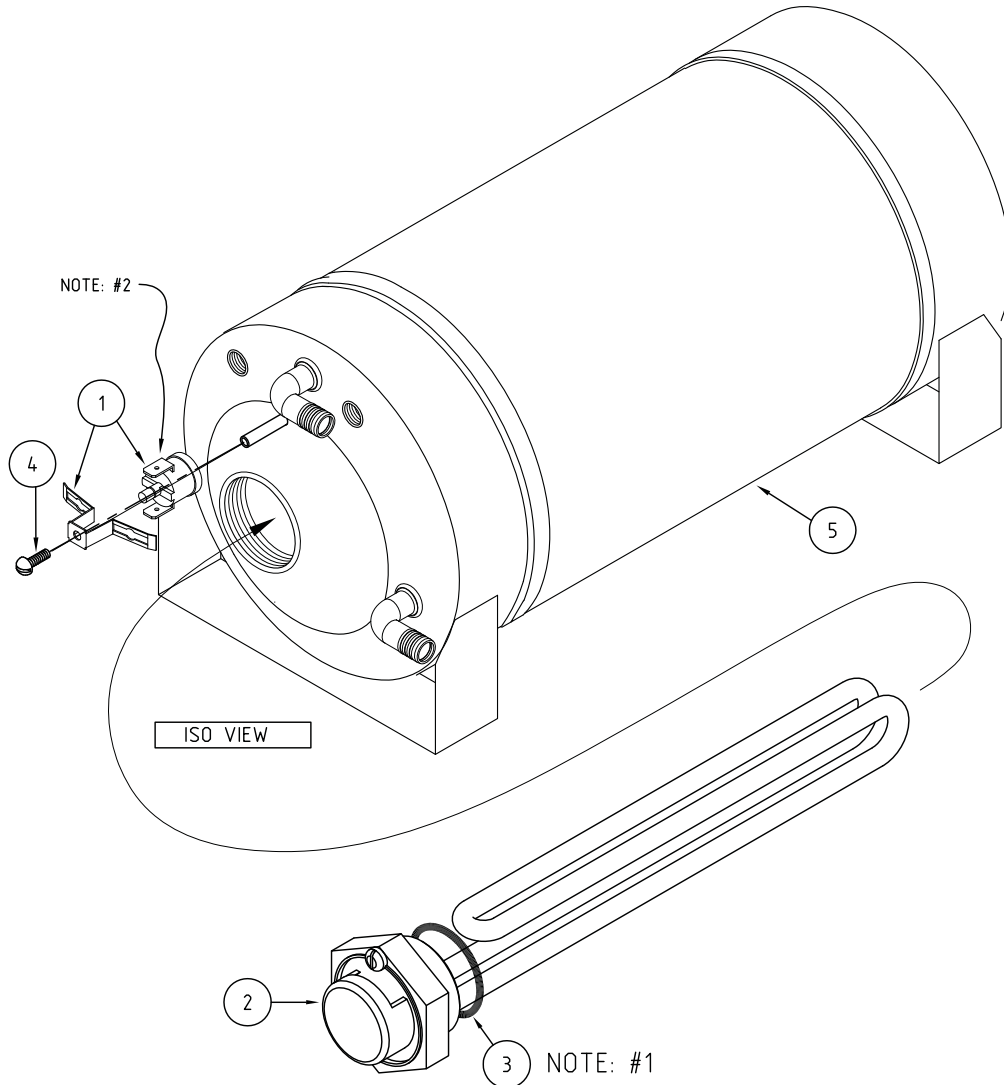
173 10009 23/04/2008 REV 3-E



Parts List			
ITEM	PART NUMBER	DESCRIPTION	QTY
1	600 40012	GM5 LOWER WASH TEE	1
2	600 40009	GM5 WASH TEE FLANGE	1
3	600 40008	GM5 WASH COLUMN	1
4	600 40014	GM5 3/8" ELBOW	1
5	600 40007	GM5 WASH/RINSE SPINDLE	1
6	8110	M5 SS HEX NUT	3
7	600 40011	O RING 5x2 N70	3
8	ARP110	O RING ARP110	1
9	ARP123	O RING ARP123	1
10	600 80090	M10 x1mm PITCH S/S NUT	1
11	4009	TUBE SS 12.7 x 0.9 #304 POL x 113mm LONG	1

3KW ASSY R/TANK 1/2" 1 THERMOSTAT

400 10129 30-10-06 3 A



ITEM	CODE	DESCRIPTION	QTY
1	600 30088	THERMOSTAT TY60/R-95C [with E bracket]	1
2	600 30249	ELEMENT 3kW RINSE	1
3	3006	GASKET ELEMENT 54.0:1.6mm	1
4	600 80052	MS PAN SLOT ZP M3X6.	1
5	400 10114	RINSE TANK NEW SUB ASSY 1/2"	1

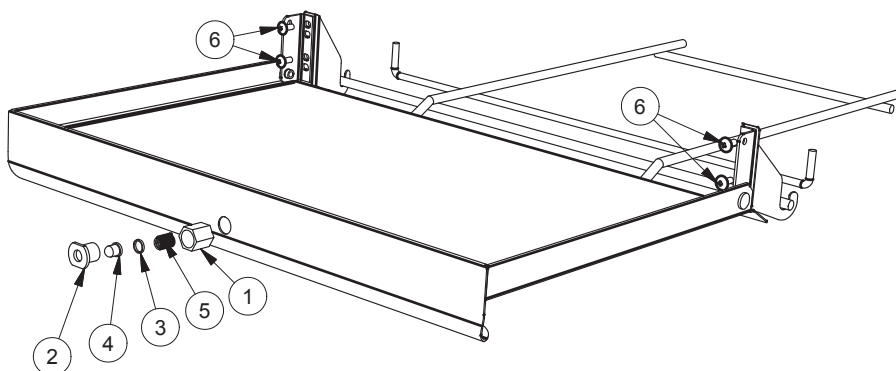
NOTE: 1. USE GRAPHITE JOINING COMPOUND ON BOTH SIDES OF GASKET BEFORE INSERTING ONTO ELEMENT.

NOTE: 2. USE HEAT TRANSFER COMPOUND UNDER THERMOSTAT HEAD.

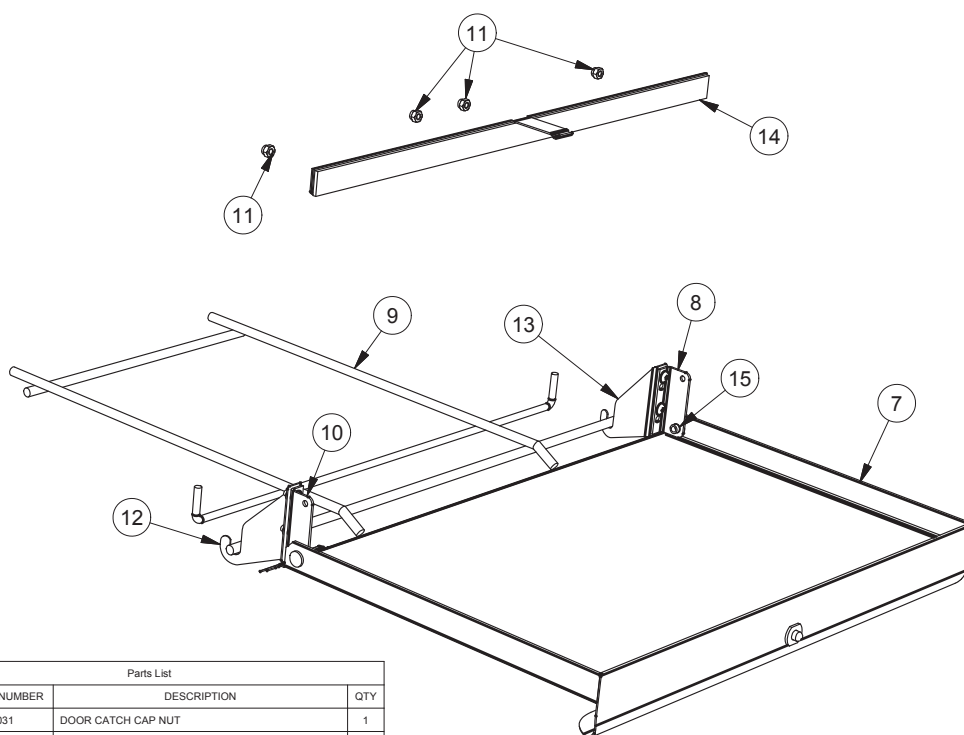
GE5/GM5/GH/GL6 DOOR & RACK ASSEMBLY

123 10001 29/04/2008 REV 3-C

EXPLODED PERSPECTIVE VIEW



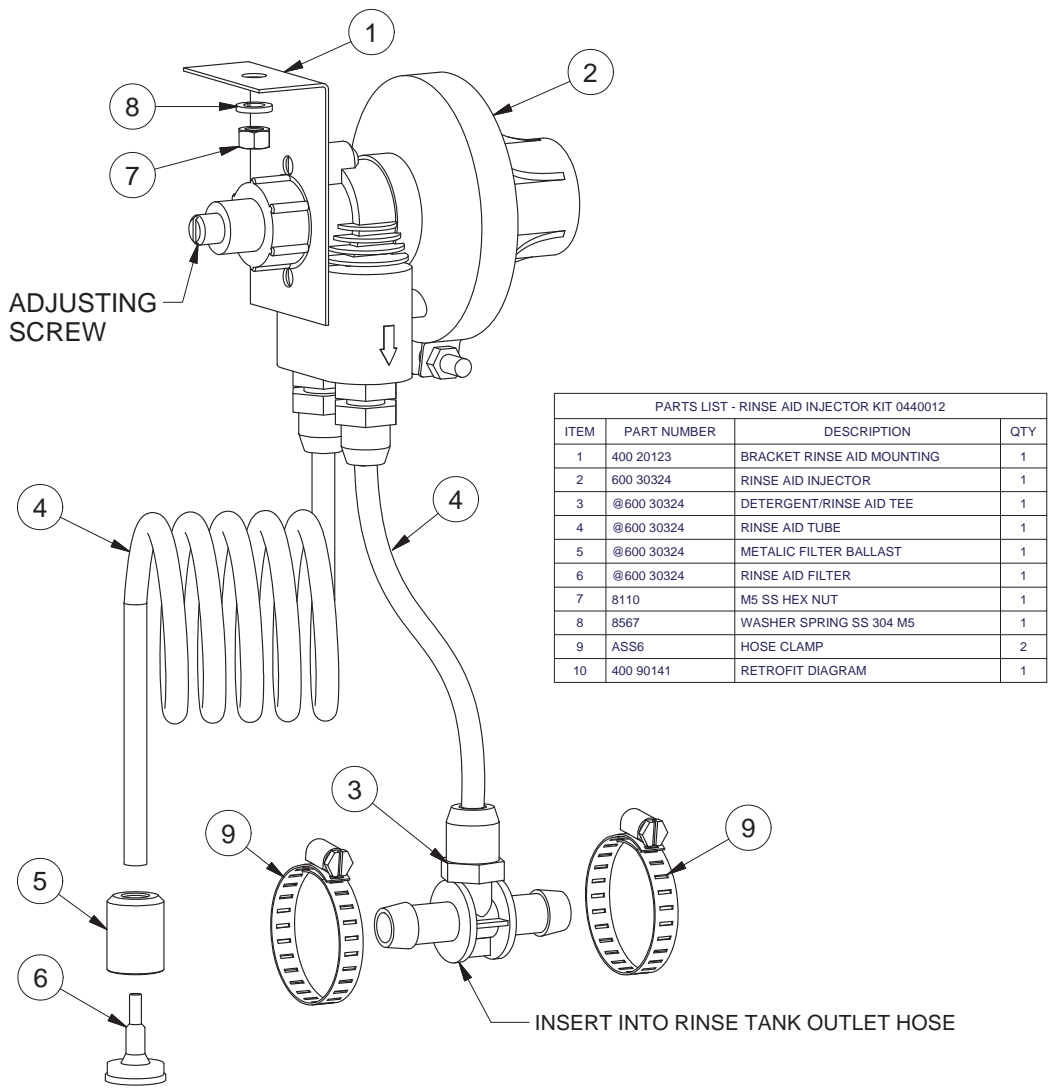
PERSPECTIVE VIEW



Parts List			
ITEM	PART NUMBER	DESCRIPTION	QTY
1	400 30031	DOOR CATCH CAP NUT	1
2	400 30030	DOOR CATCH FACE BOLT	1
3	400 30033	DOOR CATCH SPACER FOR PLUNGER	1
4	40030032	DOOR CATCH PLUNGER	1
5	400 90024	DOOR CATCH COIL SPRING S/S	1
6	600 80017	M5 x 12 SS TRUSS HEAD SCREW	4
7	123 10014	GE5/GM5 DOOR ASSEMBLY	1
8	173 20008	BRKT GM5 RIGHT DOOR HINGE	1
9	173 30001	GM RACK ADAPTOR	1
10	173 20009	BRKT GM5 LEFT DOOR HINGE	1
11	600 80060	NUT NYLOC M5 S/S	4
12	173 10042	GM5 RACK HOLDER ASSEMBLY (LEFT)	1
13	173 10043	GM5 RACK HOLDER ASSEMBLY (RIGHT)	1
14	123 10044	GE5/GM5 DOOR SEAL RETAINER BRKT ASSY	1
15	11154	BUSH DOOR HINGE BRACKET-LONG	2

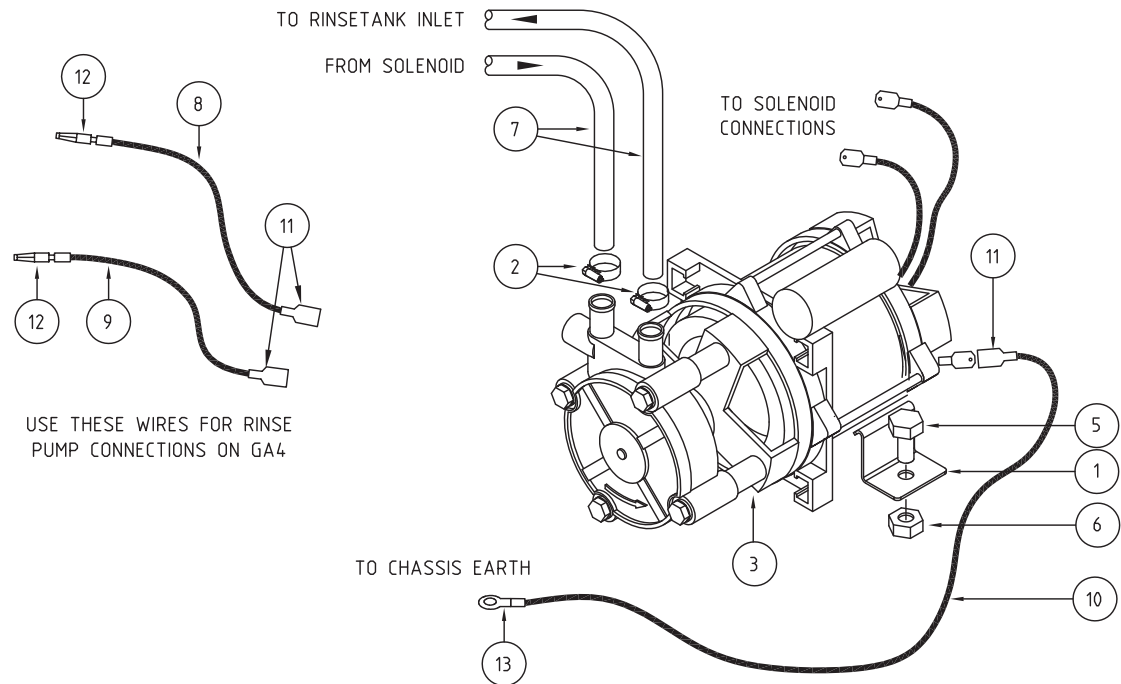
RINSE AID INJECTOR KIT 0440012

400 90141 9/03/2010 REV 1-E



RINSE PUMP KIT 0440021

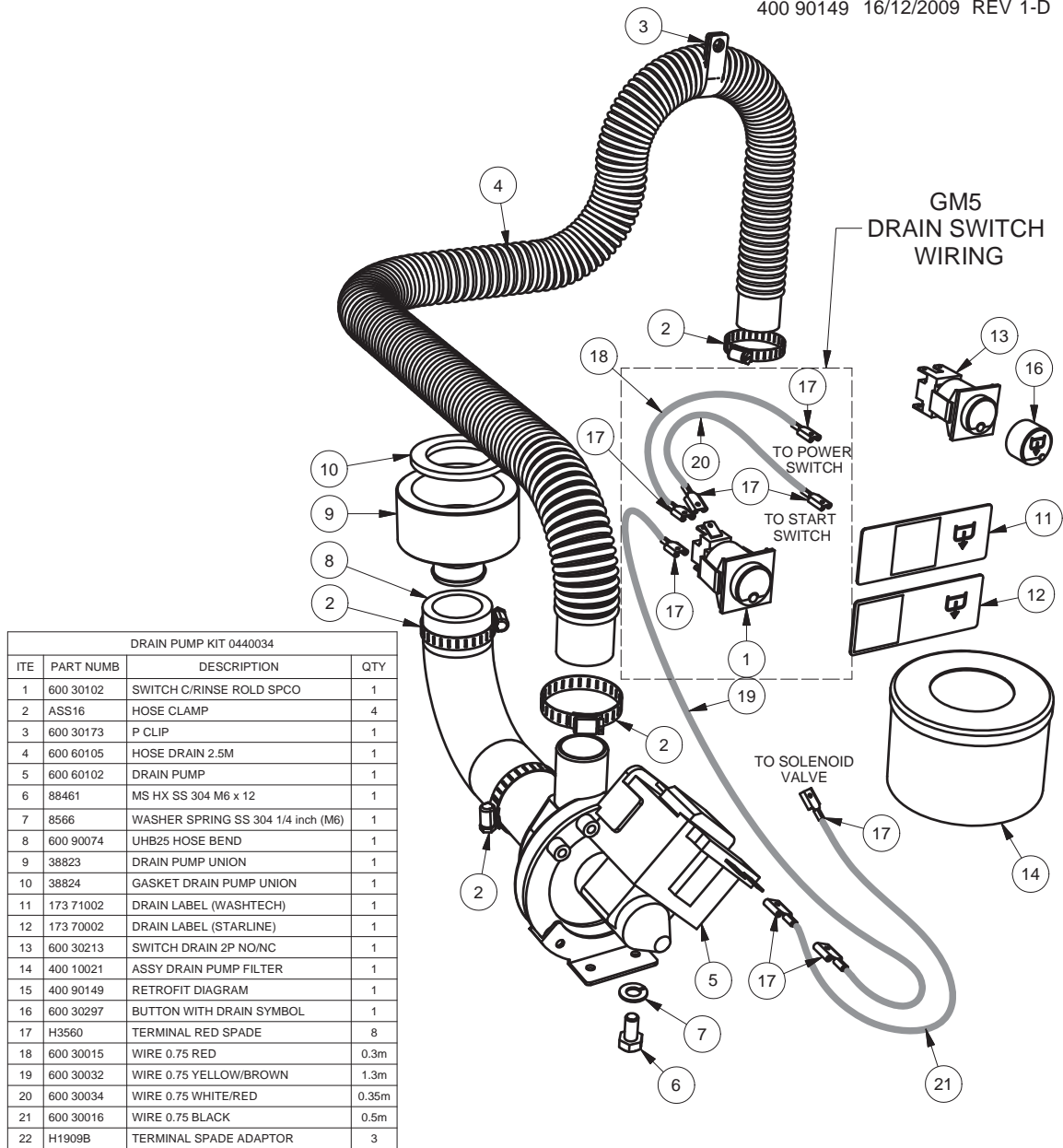
400 90142-1 15-09-09 1G



PARTS LIST - LGB RINSE PUMP KIT 0440021			
ITEM	CODE	DESCRIPTION	QTY
1	400 20043	BRACKET -RINSE PUMP	2
2	ASS06	HOSE CLIP ASS6	3
3	600 30116	0.46kW RINSE PUMP WITH CAPACITOR 10uf	1
4	H1909B	DOUBLE ADAPTOR	2
5	88461	BOLT M6 x 12 S/S HEX	2
6	8106	NUT M6 HEX SS	2
7	600 60073	HOSE HOTAL 11mm x 19mm	0.7M
8	600 30016	WIRE 0.75mm BLACK	0.5M
9	600 30021	WIRE 0.75mm PINK	0.5M
10	600 30014	WIRE 0.75mm GREEN/YELLOW	0.5M
11	H3560	TERMINAL SPADE RED	3
12	H3919	BULLET MALE RED	2
13	H4115	RING TERMINAL RED	1
14	600 60111	NIPPLE 3/4" WASHING MACHINE	1
15	400 90142	RINSE PUMP KIT RETROFIT DIAGRAM	1

DRAIN PUMP KIT 0440034 - GM5/UE5/GH/GL6

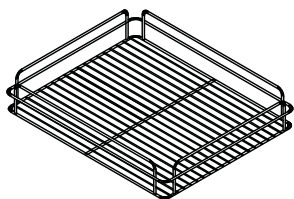
400 90149 16/12/2009 REV 1-D



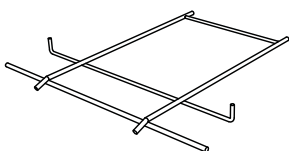
Accessories

WASHTECH GM5 ACCESSORIES

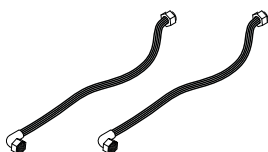
GM5 ACW 23-05-06 1B



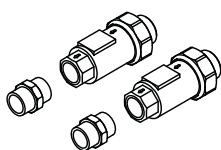
0401
GLASS RACK 365mm



173 30001
GM5 RACK ADAPTOR



600 60100
1m HOSE ANGLE END



600 60108
DUAL CHECK VALVE

600 60111
3/8-3/8 HEX NIPPLE FITTING

Information supplied in this manual is copyright. No part of this work may be reproduced or copied in any form or by any means, electronic or mechanical without the express permission of the author / publisher.



Distributed In
Australia by

MOFFAT®

740 Springvale Road, Mulgrave 3170, Victoria, Tel 03 9518 3888 Fax 03 9518 3818

Service 1 800 622 216
Parts 1 800 337 963

