

GM

Series 6

UNDERCOUNTER GLASSWASHER



Parts Manual

Spare Parts

DESCRIPTION	PART NO
Cabinet & Door	
Control Panel Label	400 70066
Door Assembly	123 10014
Door Catch Cap Nut	400 30031
Door Catch Coil Spring	400 90024
Door Catch Face Bolt	400 30030
Door Catch Plunger	400 30032 *
Door Seal Adhesive Strip (500mm long)	600 90066 *
Door Seal Retainer Bracket	123 10044
Rack Adaptor	173 30001
Controls & Indicators	
Cold Rinse Switch	600 30215 *
Cord Set 15A	600 30255
Door Reed Switch	600 30183 *
Power Switch	600 30214 *
Pressure Switch	600 30266 *
Ready Light	600 30162 *
Relay	600 30080 *
Relay Base	600 30081 *
Run Light	600 30163
Start Buttons 3 Bank	600 30212 *
Test /Detergent Prime Switch	3035
Timer	32822 *
Heating Components	
Over Temperature Thermostat	600 30088
Rinse Element 3 KW	600 30249 *
Rinse Tank Assembly	400 10129
Rinse Thermostat	3020 *
Wash Element 2.5 KW	600 30160 *
Wash Thermostat	30201 *
Hoses & Fittings	
Hose Clamp 6 mm	ASS 06
Hose Clamp 16 mm	ASS 16
Pressure Switch Hose (specify length)	3067 *
Rinse Hose (specify length)	600 60073
Wash Pump Inlet Hose UHB 25	600 90074
Wash Pump Outlet Hose	400 90121

Spare Parts

DESCRIPTION	PART NO
Pumps & Solenoids	
Detergent Pump	600 30094 *
Solenoid Valve	3342 *
Wash Pump FIR	3910
Wash Pump CRC-L	600 30327 *
Wash Tank Components	
Drain Upstand	400 90119 *
Pressure Bell	400 90135 *
Pressure Bell O Ring	ARP 205 *
Rinse Jet	600 40049 *
Rinse Jet Blind	600 40050 *
Rinse Jet O-Ring (OR R6 NBR)	600 40051 *
Upper Rinse Arm Assembly	600 41081 *
Upper Wash Arm Assembly	180 10010
Wash Jet Upper	600 41078 *
Wash Arm Column Assembly	173 10009
Wash Jet Lower	600 40046 *
Wash Jet Lower Blind	600 40047 *
Wash Jet O-Ring (OR 2050 NBR)	600 40048 *
Wash Pump Inlet Filter	600 40001 *
Wash/Rinse Arm Assembly	600 40005 *

Note:

For more parts look in the section “Assembly Diagrams”.

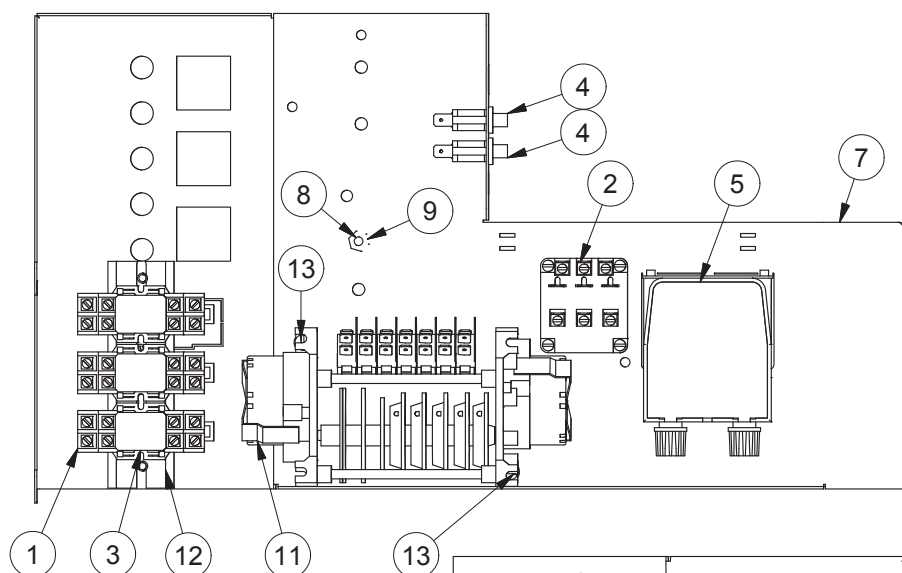
* Recommended part for remote locations and service stations.

Assembly Diagrams

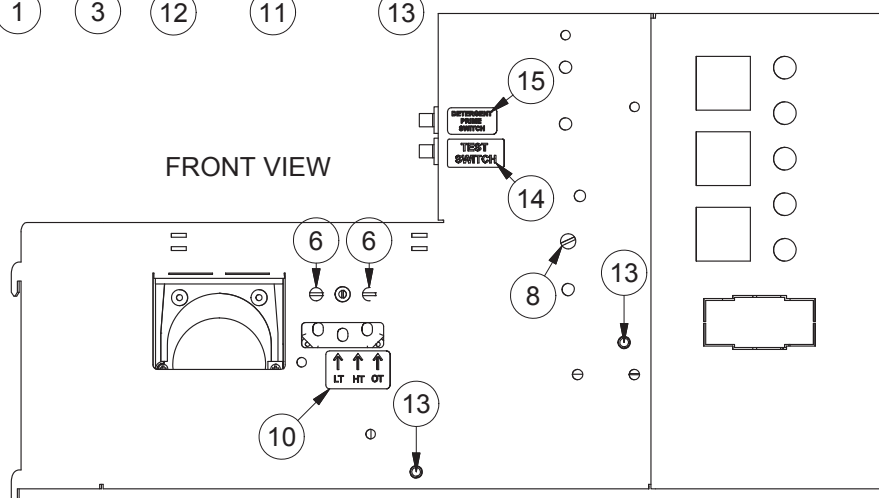
GM6 WIRING TRAY ASSEMBLY

204 10120 19/04/2010 REV 3-A

REAR VIEW



FRONT VIEW

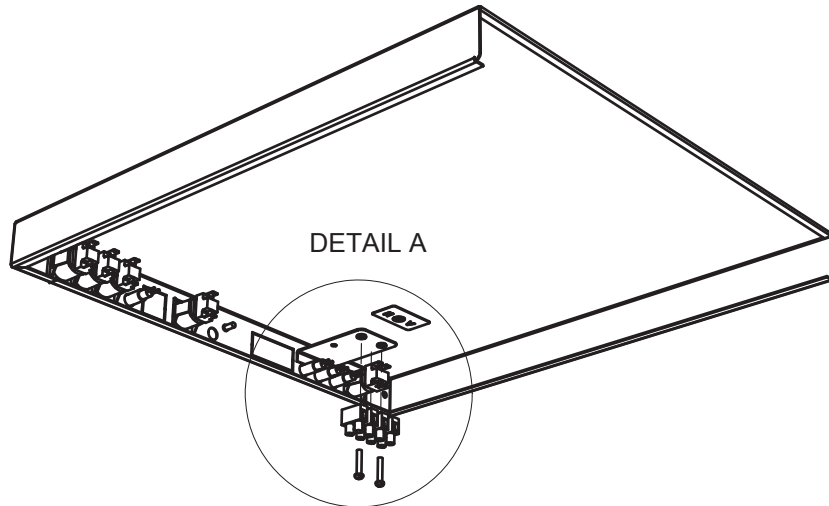


Parts List			
ITEM	PART NUMBER	DESCRIPTION	QTY
1	600 30081	BASE 2 POLE RELAY	3
2	3020	3 POLE THERMOSTAT	1
3	600 30080	RELAY 2 POLE (240VAC)	3
4	3035	SWITCH SINGLE POLE BIASED BLACK	2
5	600 30094	PERI PUMP 1.5L/H SEKO-KIT	1
6	8800	MS PAN POZI ZP M4x6	2
7	204 10105	GM6 WIRING TRAY SUB-ASSY	1
8	8816	MS RH BRASS 3/16 X 3/4	1
9	8151	NUT HX BRASS 3/16" PRESSED	1
10	REF	LABEL THERMOSTAT ADJUSTMENT	1
11	32822	TIMER4907DV(180/6 SEC)3 CYCLE	1
12	3231	DIN RAIL ONLY	120mm
13	8801	MS PAN POZI ZP M4x12	2
14	REF	LABEL TEST SWITCH	1
15	REF	LABEL DETERGENT PRIME SWITCH	1

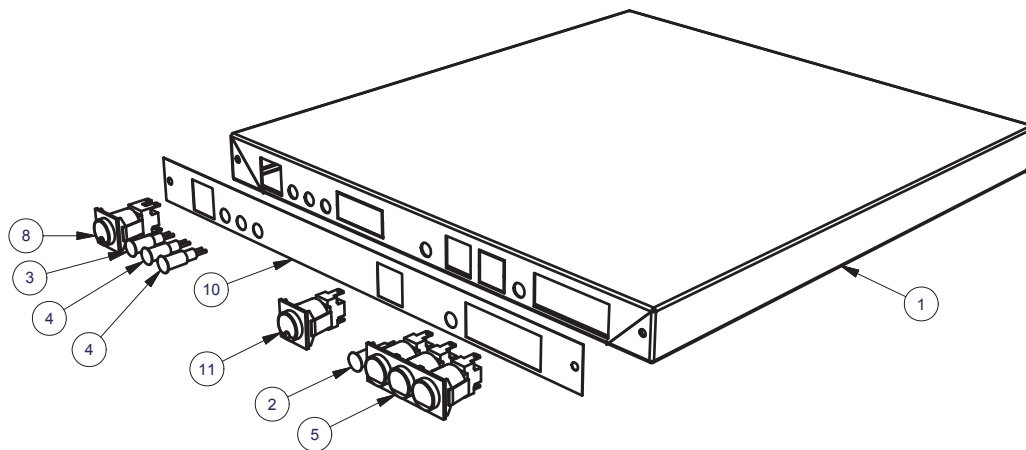
GM6 CONTROL PANEL ASSY

204 10104 29/03/2010 REV 3-A

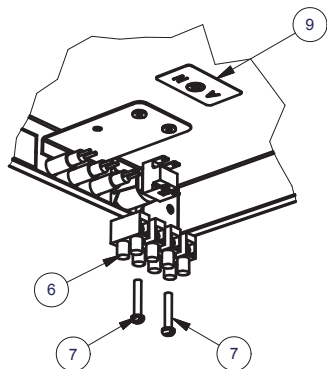
REAR VIEW



PERSPECTIVE VIEW



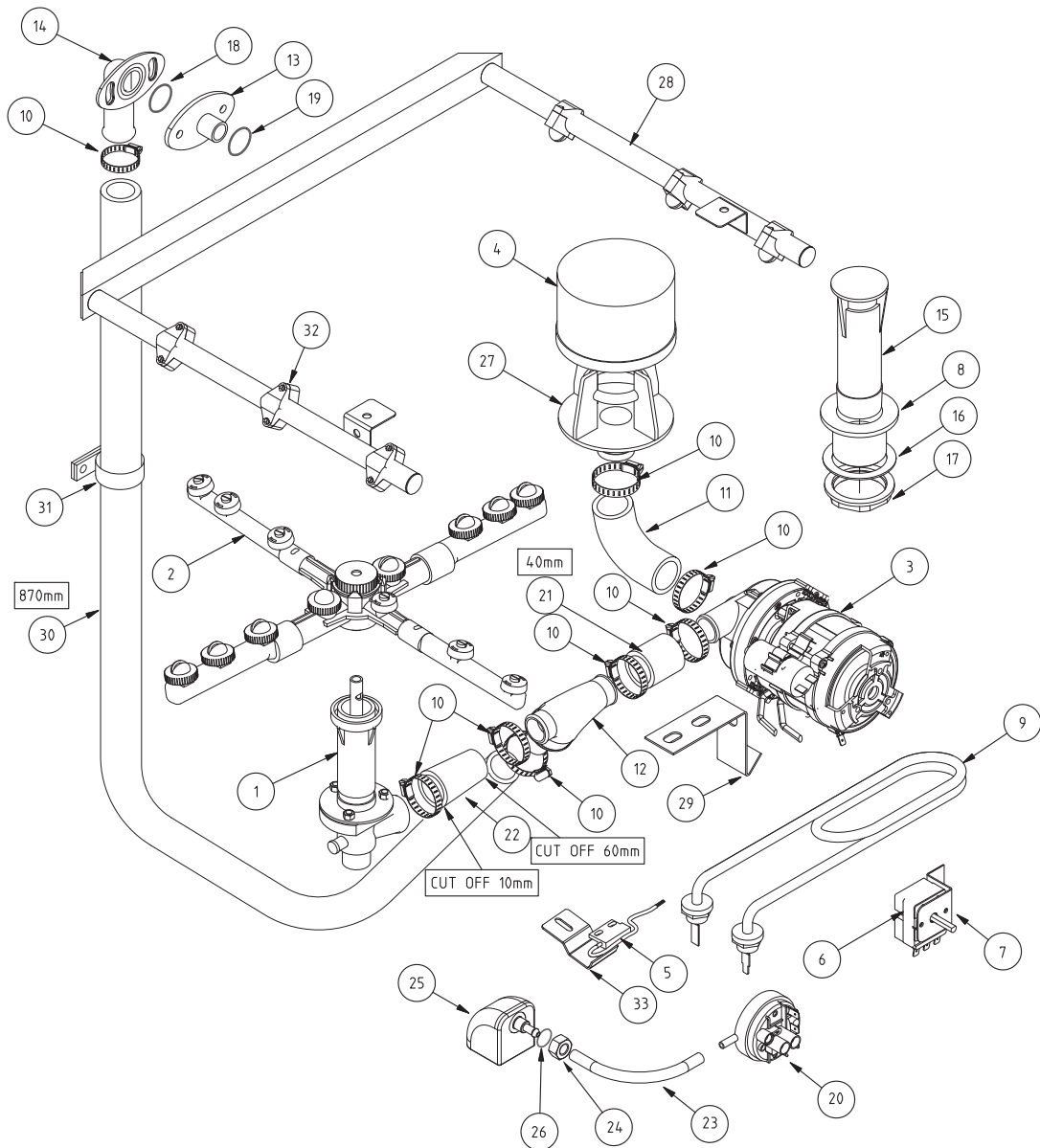
DETAIL A



Parts List			
ITEM	PART NUMBER	DESCRIPTION	QTY
1	180 10042	GL6 & GM6 CONTROL PANEL SUB ASSY	1
2	600 30163	LENS & NEON ASSY (GREEN) 12mm	1
3	600 30161	LENS & NEON ASSY (RED) 12mm	1
4	600 30162	LENS & NEON ASSY (AMBER) 12mm	2
5	600 30212	3 BANK 1 POLE MOMENTARY SWITCH	1
6	32271	TERMINAL STRIP 4 WAY	1
7	8802	MS PAN POZI ZP M4x25	2
8	600 30214	SWITCH POWER 2P NO/NO LATCHED	1
9	REF	POWER TERMINAL LABEL	1
10	400 70066	WASHTECH GL5 CONTROL LABEL	1
11	600 30215	SWITCH NO 1 POLE LATCHED	1

GL6/GM6 WASH SYSTEM

GL6 0003 18-11-10 3 C

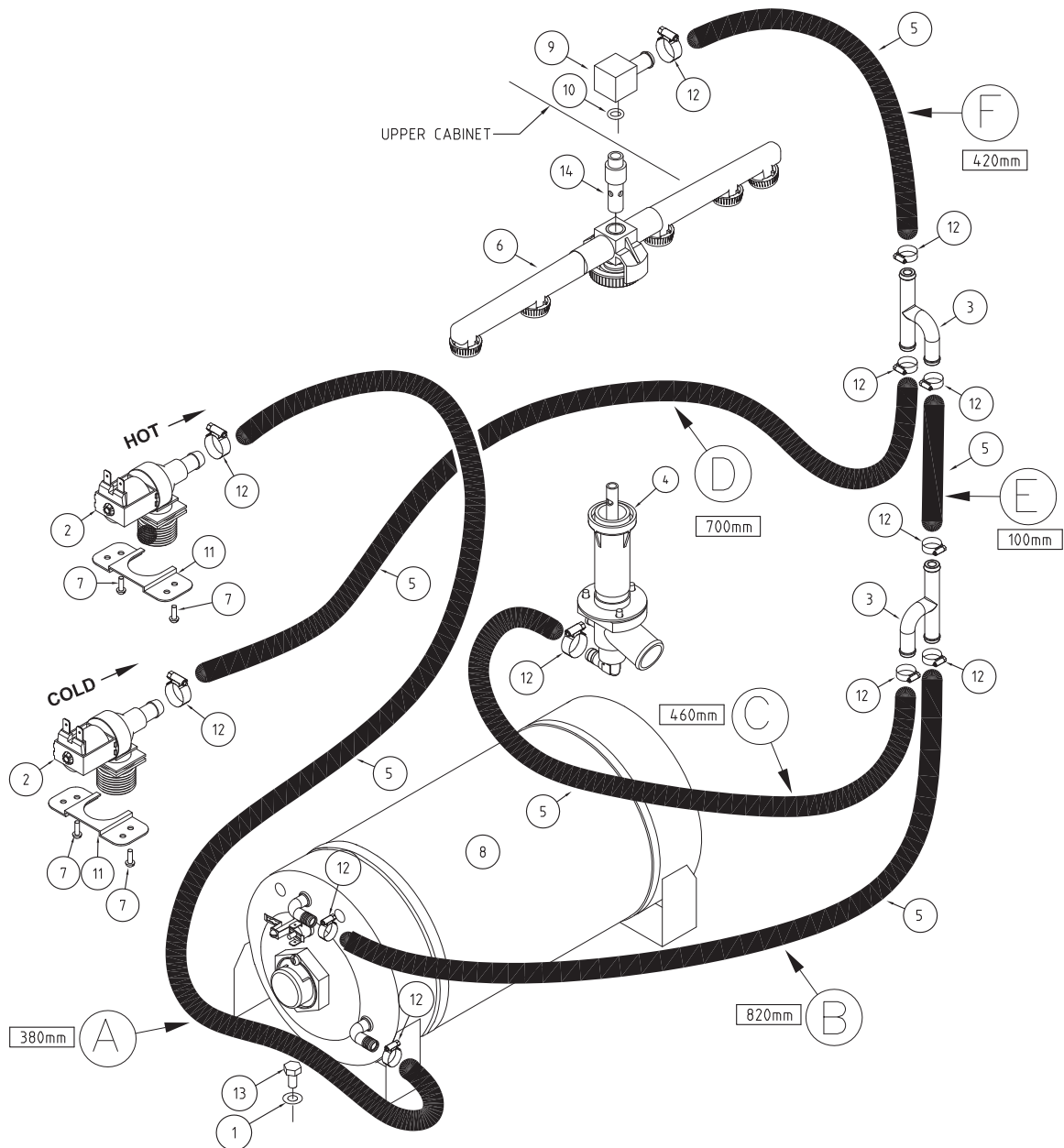


ITEM	PART #	DESCRIPTION	QTY
1	173 10009	GM5 WASH COLOUMN ASSY	1
2	600 40005	KROMO WASH ARM ASSEMBLY	1
3	600 30327	GM WASH PUMP CRC-L/SX 1ph 240v	1
4	600 40001	FILTER GM5 WASH PUMP	1
5	600 30183	REED SWITCH STEM	1
6	30201	THERMOSTAT 1 POLE	1
7	190 20082	GL THERMOSTAT BRKT	1
8	400 30042	WASTE DRAIN PLASTIC 40mm PLASTIC	1
9	600 30160	ELEMENT 2500W BENT ELEMENT	1
10	ASS16	HOSECLIP ASS16	8
11	400 90012	HOSE GLV & UD UPPER WASH	0.5
12	180 10006	GH WASH TEE ASSY	1
13	180 10007	GH UPPER WASH SPIGOT ASSY	1
14	400 90123	DRAIN PUMP INLET CASTING	1
15	400 90119	UPSTAND GM5 132mm LONG	1
16	1896	GASKET FOR 40mm DRAIN WASTE	1
17	6037	BACKNUT 126 X 40mm	1

ITEM	PART #	DESCRIPTION	QTY
18	ARP214	O RING BS214	1
19	ARP22X2.5	O RING 22x2.5 N70	1
20	600 30266	PRESSURE SWITCH METAFLEX 50/25	1
21	6196	HOSE 25mm 2 PLY RADIATOR	40mm
22	400 90121	HOSE GM5 WASH PUMP OUTLET	1
23	3067	HOSE PRESSURE SW VACUUM 4mm	110mm
24	600 80009	NUT SS304 HEX M10	1
25	400 90135	CASTING SQUARE PRESSURE BELL	1
26	ARP205	O RING 205 N70	1
27	600 40002	INLET GM5 WASH PUMP	1
28	180 10009	GH UPPER WASHARM SUB-ASSY	1
29	173 20005	BRKT GM5 WASH PUMP	1
30	6197	HOSE 22mm	870mm
31	600 30173	P CLIP	1
32	600 41078	GH UPPER WASH JET	6
33	400 20115	DOOR SWITCH MAGNET CLAMP	1

GM6 RINSE SYSTEM

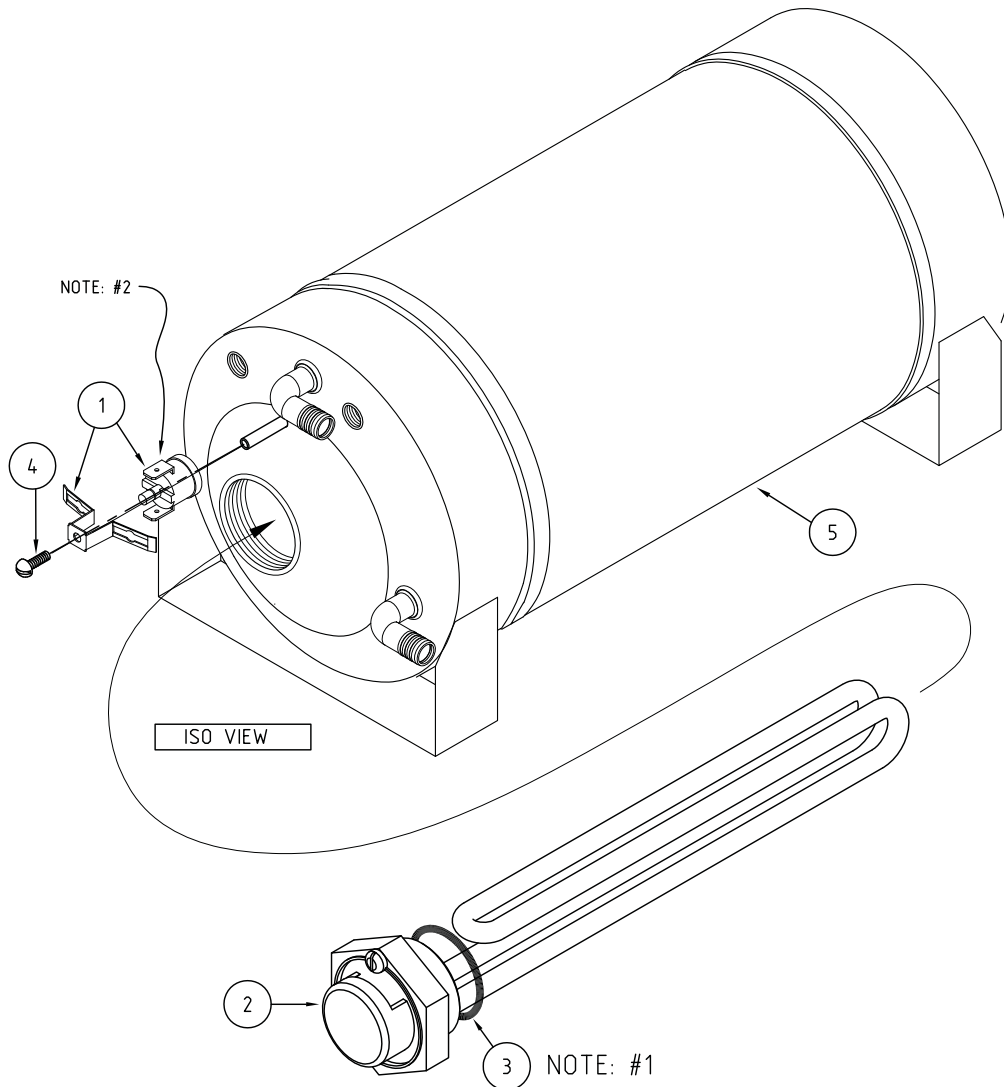
GM6 0002 19-04-10 3 A



ITEM	CODE	DESCRIPTION	QTY
1	8566	WASHER SPRING SS 304 M6	1
2	3342	SOLENOID VALVE GL 1 WAY 90°	2
3	400 90076	SS RINSE TEE	2
4	173 10009	GM5 WASH COLUMN ASSY	1
5	600 60073	HOT/COLD HOSE 11mm X 12mm	
6	600 41081	GH UPPER RINSE ARM	1
7	8801	MS PAN POZI ZP M4 X 12	4
8	400 10129	3KW ASSY R/TANK 1/2" 1 THERMOSTAT	1
9	600 41080	GH UPPER RINSE ELBOW	1
10	ARP110	O-RING ARP110	1
11	1247	INLET SOLENOID SUPPORT	2
12	ASS06	HOSECLIP ASS06	12
13	88461	MS HX SS 304 M6 X 12	1
14	600 41079	GH UPPER RINSE SPINDLE	1

3KW ASSY R/TANK 1/2" 1 THERMOSTAT

400 10129 30-10-06 3 A



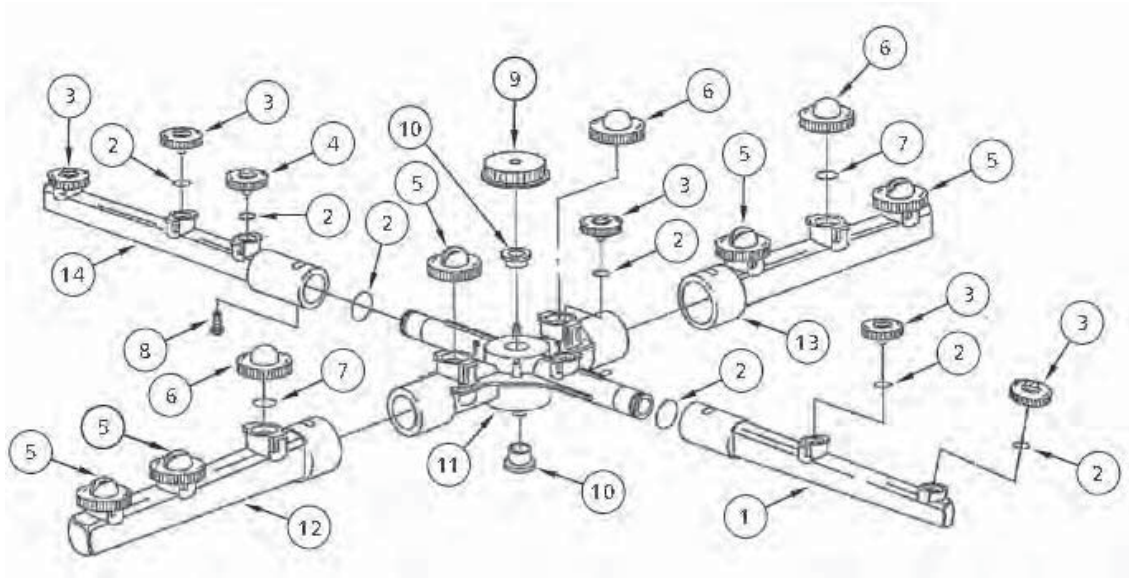
ITEM	CODE	DESCRIPTION	QTY
1	600 30088	THERMOSTAT TY60/R-95C [with E bracket]	1
2	600 30249	ELEMENT 3kW RINSE	1
3	3006	GASKET ELEMENT 54.0:1.6mm	1
4	600 80052	MS PAN SLOT ZP M3X6.	1
5	400 10114	RINSE TANK NEW SUB ASSY 1/2"	1

NOTE: 1. USE GRAPHITE JOINING COMPOUND ON BOTH SIDES OF GASKET BEFORE INSERTING ONTO ELEMENT.

NOTE: 2. USE HEAT TRANSFER COMPOUND UNDER THERMOSTAT HEAD.

GM/GH/GL6 WASH ARM ASSY

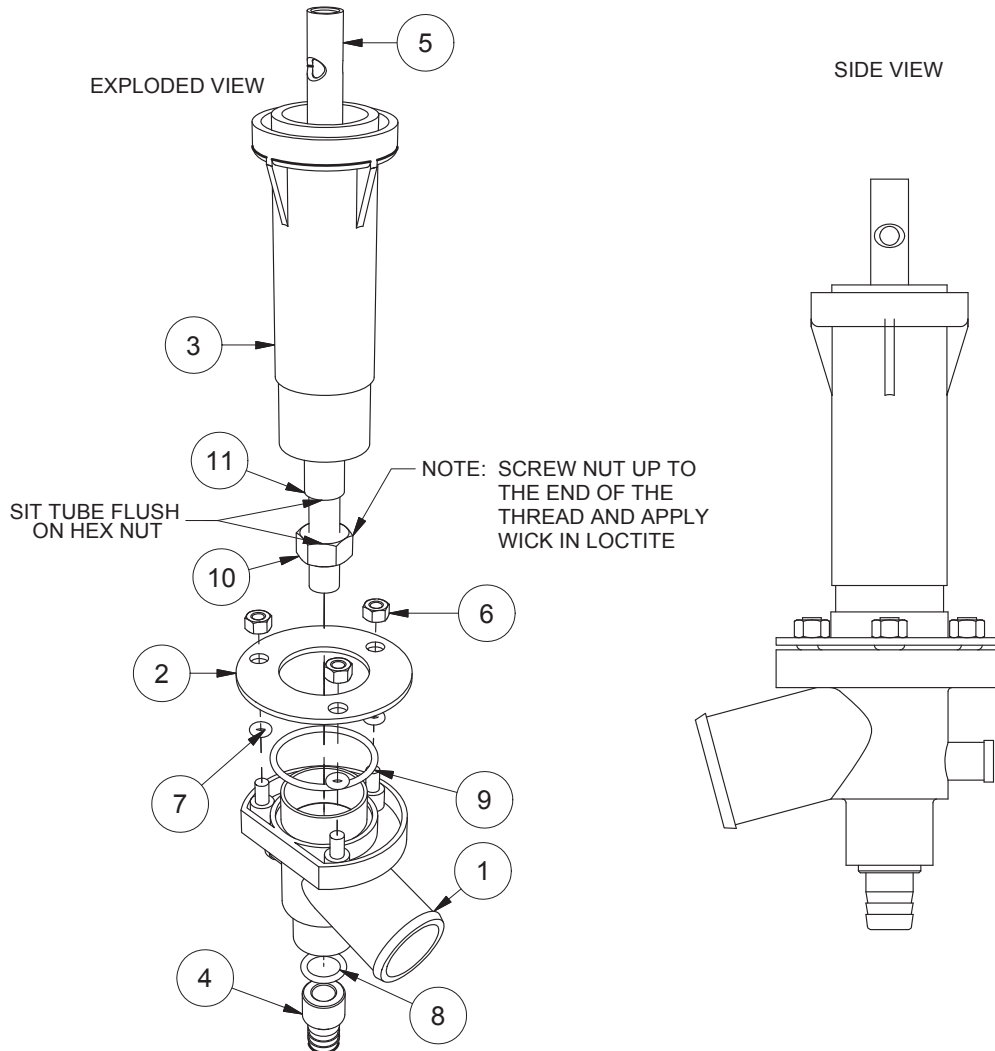
600 40005 06-10-09 1C



ITEM	CODE	DESCRIPTION	QTY
1	REF	2 JET RINSE ARM	1
2	600 40051	011 O-RING	7
3	600 40049	GM5 RINSE JET	4
4	600 40050	GM5 BLIND RINSE JET	1
5	600 40046	GM5 WASH JET	4
6	600 40047	BLIND WASH JET	2
7	600 40048	014 O-RING	6
8	600 40063	ARM SECURING SCREW	1
9	600 40062	THUMB SCREW	1
10	600 40064	BUSH	1
11	REF	WASH ARM CENTRAL CROSS	1
12	REF	WASH ARM "A"	1
13	REF	WASH ARM "B"	1
14	REF	3 JET RINSE ARM	1

GM6/GL6/XG WASH COLUMN ASSY

173 10009 8/06/2010 REV 3-F

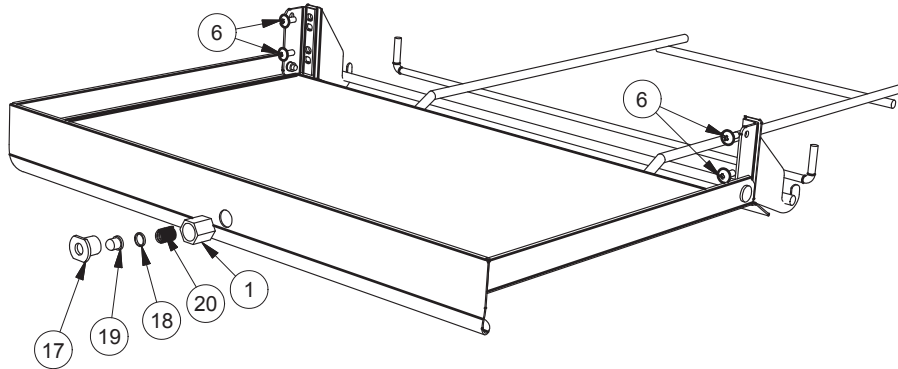


Parts List			
ITEM	PART NUMBER	DESCRIPTION	QTY
1	600 40012	TEE GM5 LOWER WASH	1
2	600 40009	FLANGE GM5 WASH TEE	1
3	600 40008	COLUMN GM5 WASH	1
4	400 30208	G SERIES RINSE CONNECTOR	1
5	600 40007	SPINDLE GM5 WASH	1
6	8110	M5 SS HEX NUT	3
7	600 40011	O RING 5x2 N70	3
8	ARP110	O RING ARP110	1
9	ARP123	O RING ARP123	1
10	600 80090	M10 x1mm PITCH S/S NUT	1
11	4009	TUBE SS 12.7 x 0.9 #304 POL x 113mm LONG	1

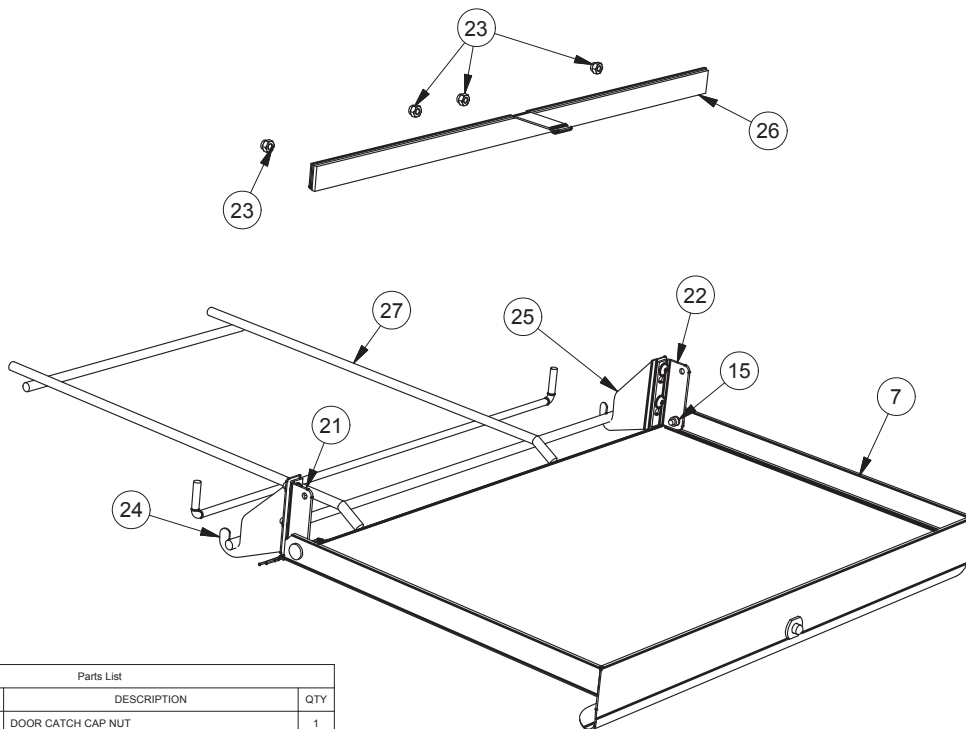
GE5/GM/GL6 DOOR & RACK ASSEMBLY

123 10001 29/04/2008 REV 3-C

EXPLODED PERSPECTIVE VIEW



PERSPECTIVE VIEW

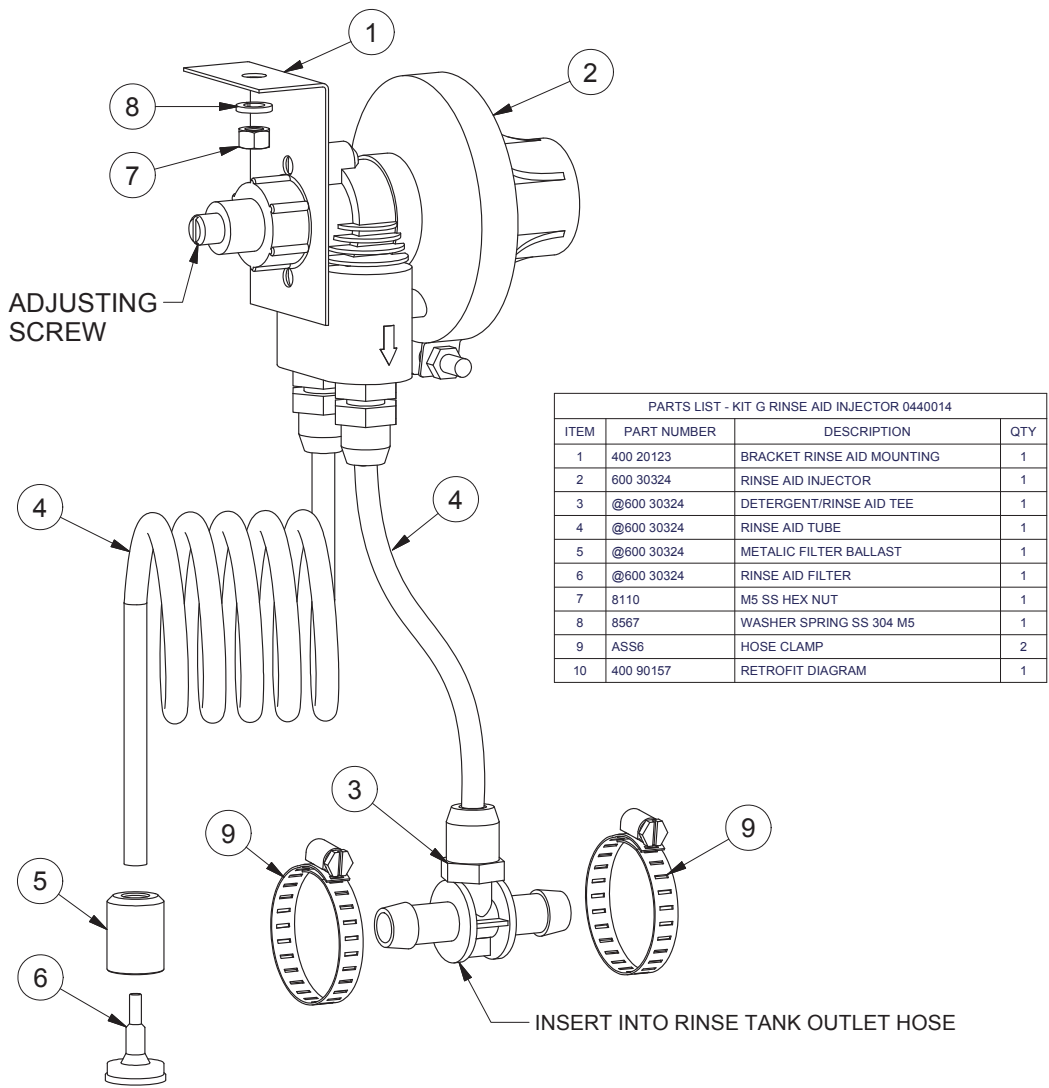


Parts List			
ITEM	PART NUMBER	DESCRIPTION	QTY
1	400 30031	DOOR CATCH CAP NUT	1
6	600 80017	M5 x 12 SS TRUSS HEAD SCREW	4
7	123 10014	GE5/GM5 DOOR ASSEMBLY	1
15	11154	BUSH DOOR HINGE BRACKET-LONG	2
17	400 30030	DOOR CATCH FACE BOLT	1
18	400 30033	DOOR CATCH SPACER FOR PLUNGER	1
19	40030032	DOOR CATCH PLUNGER	1
20	400 90024	DOOR CATCH COIL SPRING S/S	1
21	173 20009	BRKT GM5 LEFT DOOR HINGE	1
22	173 20008	BRKT GM5 RIGHT DOOR HINGE	1
23	600 80060	NUT NYLOC M5 S/S	4
24	173 10042	GM5 RACK HOLDER ASSEMBLY (LEFT)	1
25	173 10043	GM5 RACK HOLDER ASSEMBLY (RIGHT)	1
26	123 10044	GE5/GM5 DOOR SEAL RETAINER BRKT ASSY	1
27	173 30001	GM RACK ADAPTOR	1

Appendices

KIT G RINSE AID INJECTOR 0440014

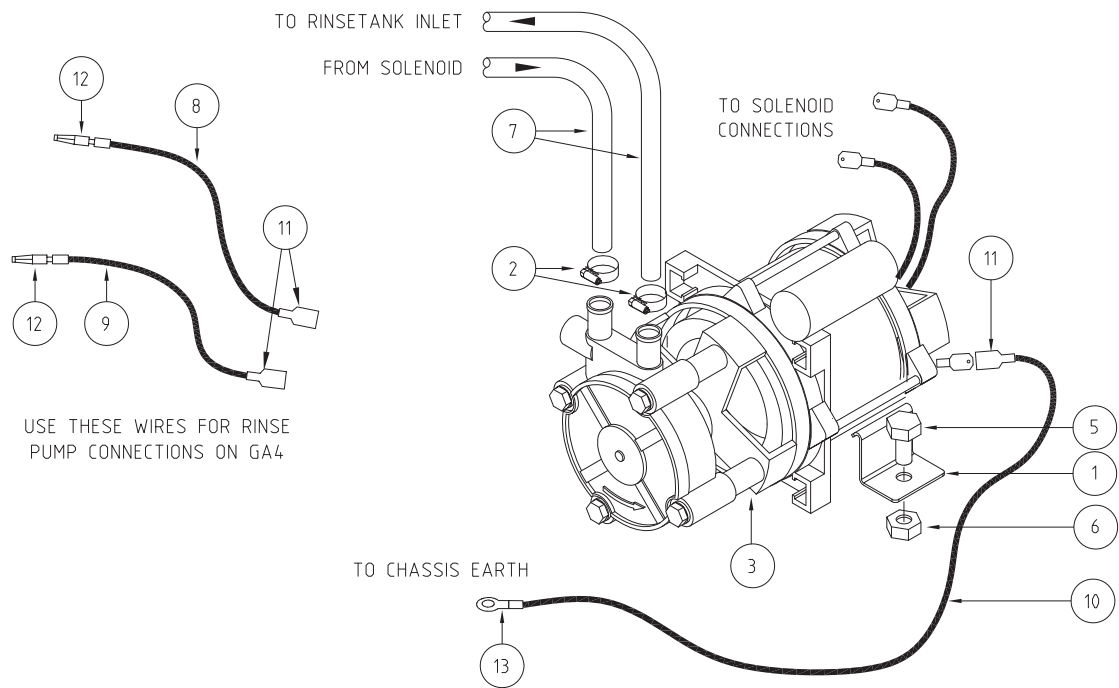
400 90157 9/03/2010 REV 1-A



INSTALLATION

RINSE PUMP KIT TYPE L - P/N 0440021

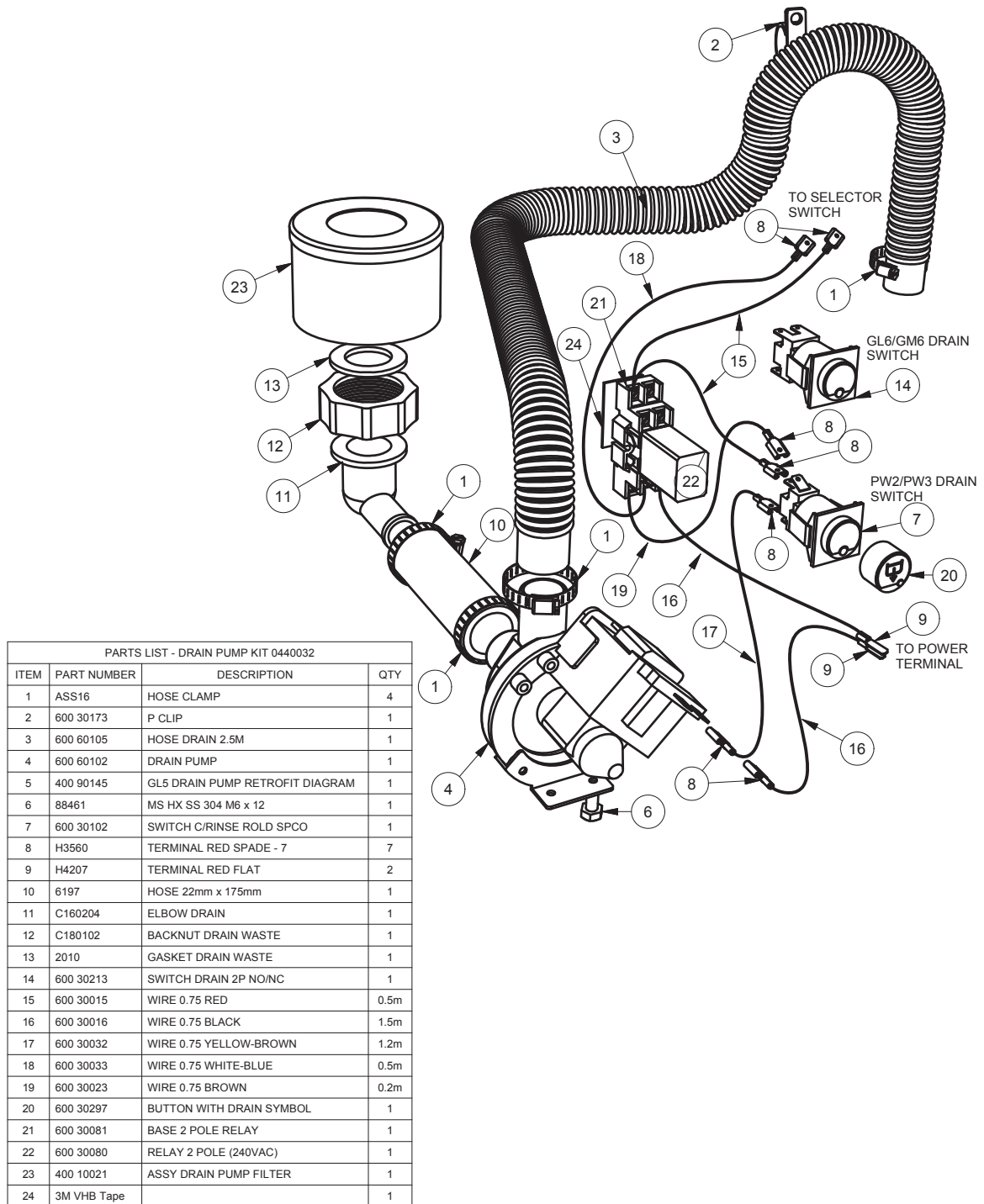
400 90142-1 31-05-10 1H



PARTS LIST - LGB RINSE PUMP KIT 0440021			
ITEM	CODE	DESCRIPTION	QTY
1	400 20043	BRACKET -RINSE PUMP	2
2	ASS06	HOSE CLIP ASS6	3
3	600 30116	0.46kW RINSE PUMP WITH CAPACITOR 10uf	1
4	H1909B	DOUBLE ADAPTOR	2
5	88461	BOLT M6 x 12 S/S HEX	2
6	8106	NUT M6 HEX SS	2
7	600 60073	HOSE HOTAL 11mm x 19mm	0.7M
8	600 30016	WIRE 0.75mm BLACK	0.5M
9	600 30021	WIRE 0.75mm PINK	0.5M
10	600 30014	WIRE 0.75mm GREEN/YELLOW	0.5M
11	H3560	TERMINAL SPADE RED	3
12	H3919	BULLET MALE RED	2
13	H4115	RING TERMINAL RED	1
14	600 60111	NIPPLE 3/4" WASHING MACHINE	1
15	400 90142	RINSE PUMP KIT RETROFIT DIAGRAM	1

DRAIN PUMP KIT 0440032-GL6/GM6/PW2/PW3

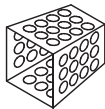
400 90145 25/11/2010 REV 1-H



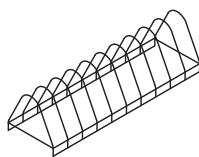
Accessories

WASHTECH GM6 ACCESSORIES

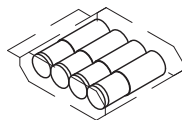
GM6 ACW 06/12/11 1B



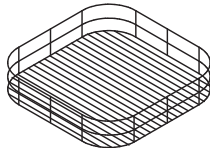
C660503
CUTLERY CONTAINER G



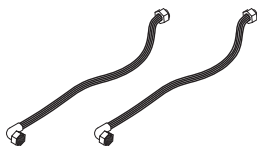
K040601
INSERT FOR PLATES & SAUCERS



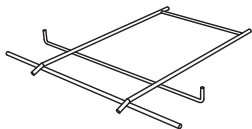
600 90021
ASSY GA/GM LEG (INOX 32x180xM10)
7026@
BAG MINIGRIP 230 x 305 x 70mu



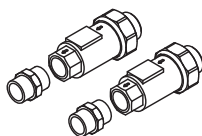
K0404
CUP/GLASS RACK 435 WIRE/PLAST.



600 60080
2m HOSE ANGLE END



174 30001
GM4 RACK ADAPTOR



600 60108
DUAL CHECK VALVE

600 60111
3/8-3/8 HEX NIPPLE FITTING

Information supplied in this manual is copyright. No part of this work may be reproduced or copied in any form or by any means, electronic or mechanical without the express permission of the author / publisher.



Distributed In
Australia by

MOFFAT®

740 Springvale Road, Mulgrave 3170, Victoria, Tel 03 9518 3888 Fax 03 9518 3818

Service 1 800 622 216
Parts 1 800 337 963

