

XG

UNDERCOUNTER GLASSWASHER



Parts Manual

Spare Parts

DESCRIPTION	PART NO
Cabinet & Door	
Control Panel Label	173 70001
Door Assembly	205 10014
Splash Baffle	205 20017
Controls & Indicators	
Cord Set 15A	600 30255
Door Reed Switch	600 30183
Power Light	600 30161
Power Switch	600 30214
Pressure Switch	600 30266
Ready Light	600 30162
Relay	600 30080
Relay Base	600 30081
Run Light	600 30163
Start Switch	600 30101
Test Switch	3035
Timer	32621 001
Heating Components	
Over Temperature Thermostat	600 30088
Rinse Element 3 KW	600 30249
Rinse Tank Assembly	205 10205
Rinse / Wash Thermostat	30201
Wash Element 2.5 KW	600 30160
Hoses & Fittings	
Hose Clamp 6 mm	ASS 6
Hose Clamp 16 mm	ASS 16
Pressure Switch Hose (100mm)	3067
Rinse Hose (specify length)	600 60073
Wash Pump Inlet Hose (0.5)	400 90012
Wash Pump Outlet Hose	400 90121

Spare Parts

DESCRIPTION	PART NO
Pumps & Solenoids	
Detergent Pump	600 30094
Flow Restrictor 6.7L.min	600 30310
Solenoid Valve	3342
Wash Pump	600 30327
Wash Tank Components	
Drain Upstand	400 90119
Fixed Jet Rinse Arm Assembly	205 10108
Pressure Bell	400 90135
Pressure Bell O Ring	ARP 205
Rinse Nozzle Closed Head	600 40050
Rinse Nozzle Opened Head	600 40049
Rinse Nozzle O-Ring (OR R6 NBR)	600 40051
Wash Arm Column Assembly	173 10009
Wash/Lower Rinse Arm Assembly	600 40005
Wash Nozzle Closed Head	600 40047
Wash Nozzle Opened head	600 40046
Wash Nozzle O-Ring (OR 2050 NBR)	600 40048
Wash Pump Inlet Filter	205 40001

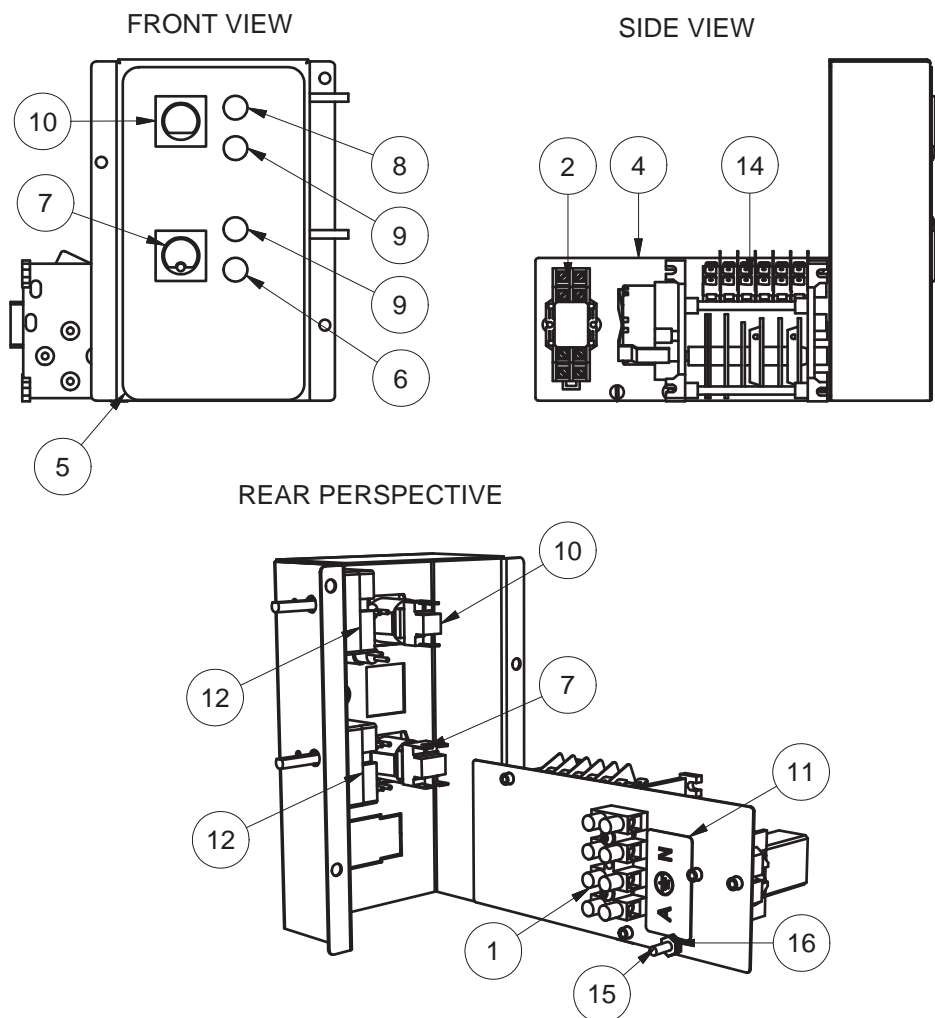
Note:

For more parts look in the section “Assembly Diagrams”.

Assembly Diagrams

XG WIRING TRAY ASSEMBLY

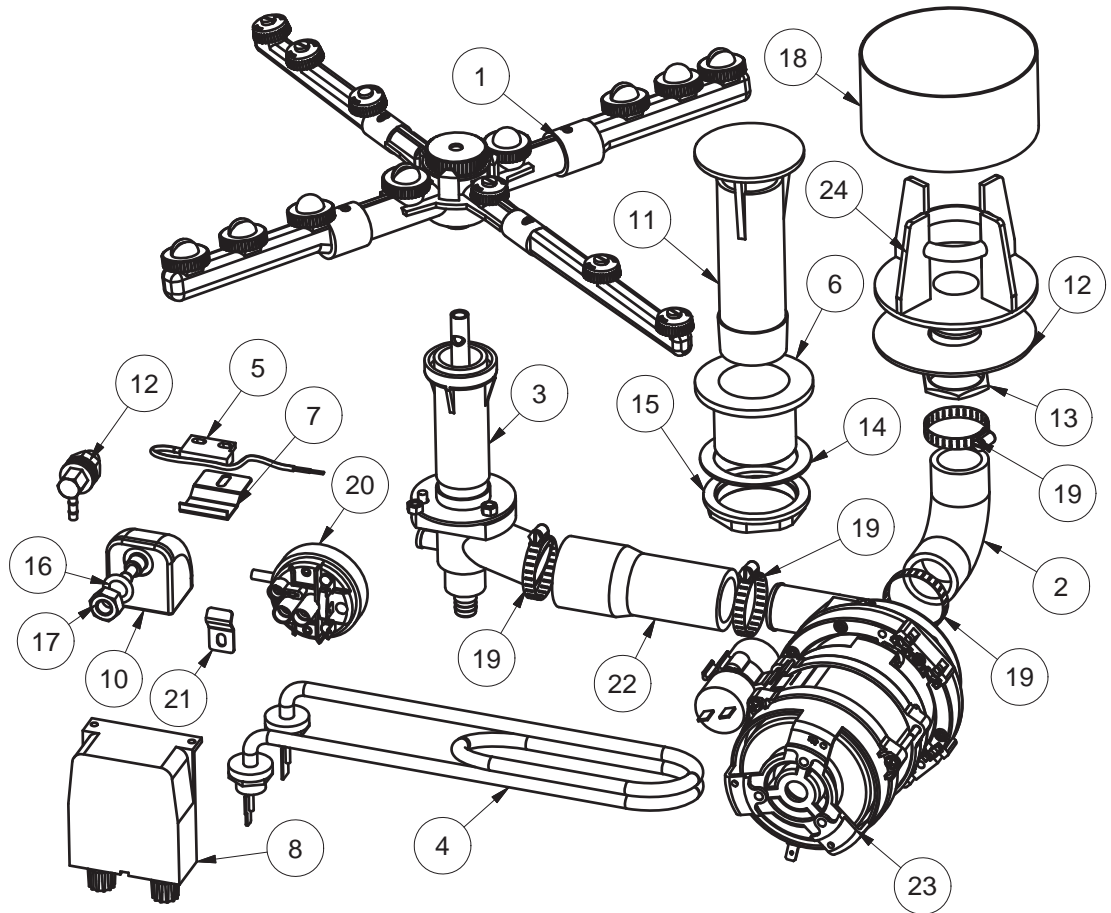
205 10020 14/05/2010 REV 3-B



Parts List			
ITEM	PART NUMBER	DESCRIPTION	QTY
1	32271	TERMINAL STRIP 4 WAY	1
2	600 30081	BASE 2 POLE RELAY	1
3	600 30080	RELAY 2 POLE (240VAC)	1
4	205 10005	XG WIRING TRAY SUB-ASSY	1
5	173 70001	GM5 CONTROL PANEL LABEL	1
6	600 30161	LENS & NEON ASSY (RED) 12mm	1
7	600 30214	SWITCH POWER 2P NO/NO LATCHED	1
8	600 30163	LENS & NEON ASSY (GREEN) 12mm	1
9	600 30162	LENS & NEON ASSY (AMBER) 12mm	2
10	600 30101	SWITCH START ROLD-SP MOMENTARY	1
11	Power Terminal Label	POWER TERMINAL LABEL	1
12	30201	THERMOSTAT 1 POLE	2
13	8802	MS PAN POZI ZP M4x25	2
14	32621 001	TIMER 60SEC 6 CAM RAPID START	1
15	8816	MS RH BRASS 3/16 X 3/4	1
16	8151	NUT HX BRASS 3/16" PRESSED	2

XG WASH SYSTEM

XG 0002 20/12/2010 REV 3-C



Parts List			
ITEM	PART NUMBER	DESCRIPTION	QTY
1	600 40005	ASSEMBLY GM5 WASH ARM	1
2	400 90012	HOSE GLV & UD UPPER WASH	0.5
3	173 10009	GM6/GL6/XG WASH COLUMN ASSY	1
4	600 30160	ELEMENT 2500W BENT ELEMENT	1
5	600 30183	REED SWITCH STEM	1
6	400 30042	WASTE DRAIN PLASTIC 40mm PLASTIC	1
7	400 20115	DOOR SWITCH MAGNET CLAMP	1
8	600 30094	PERI PUMP 1.5L/H SEKO-KIT	1
9	30201	WASH THERMOSTAT	1
10	400 90135	SQUARE PRESSURE BELL CASTING	1
11	400 90119	GM5 UPSTAND 132mm LONG	1
12	600 40003	DRAIN ELBOW GASKET 44 x 32 x 3	1
13	600 40004	STAINLESS STEEL NUT	1
14	1896	GASKET FOR 40mm DRAIN WASTE	1
15	6037	BACKNUT 126 x 40mm	1
16	ARP205	O-RING 11IDx18OD	1
17	600 80009	M10 SS HX NUT	1
18	205 40001	XG WASH PUMP FILTER	1
19	ASS16	HOSE CLAMP	4
20	600 30266	PRESSURE SWITCH 50/25MM	1
21	400 20066	TEMPERATURE GAUGE PROBE CLAMP	1
22	400 90121	GN5 WASH PUMP OUTLET HOSE	1
23	600 30327	WASH PUMP GM	1

Wash Pump

Part Number

600 30327

Function

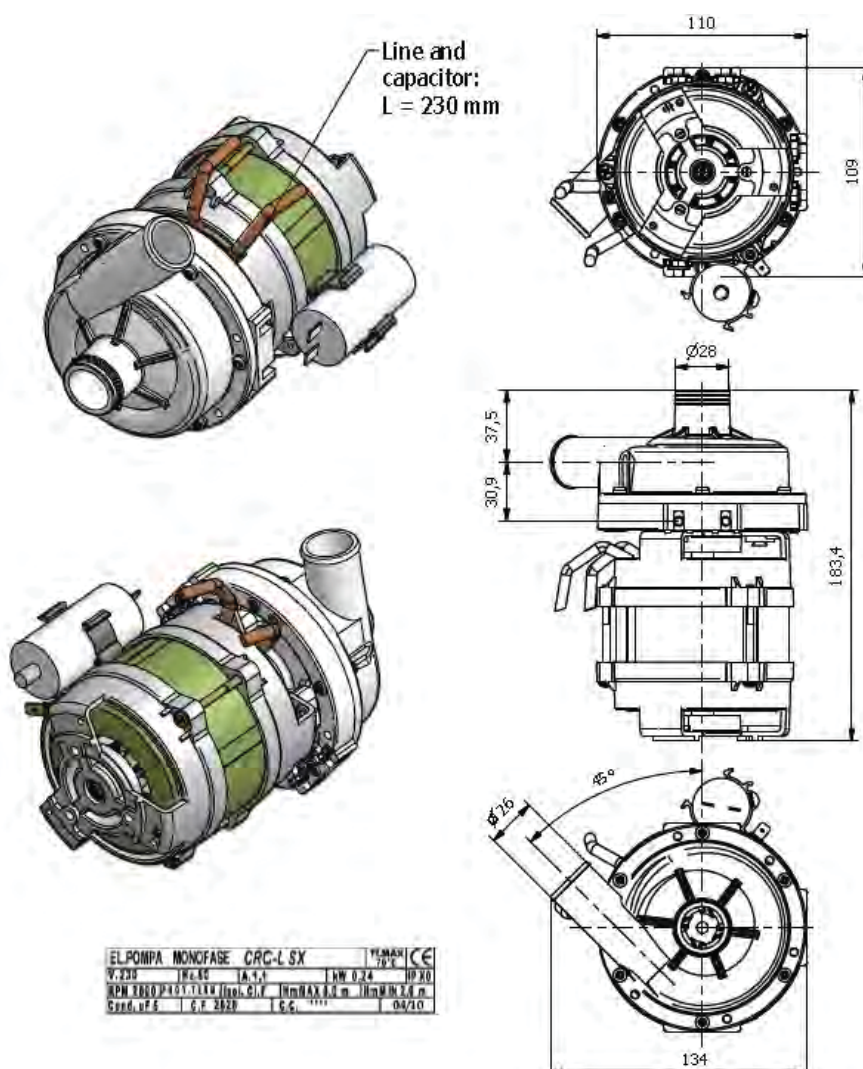
Pumps water from the wash tank to the wash arms providing a recirculating wash cycle.

Description

Electric Pump CRC-L/SX

Power:	0.24 kW	Speed:	2800 rpm
Voltage:	230 V	Amperes:	1.1 A
Frequency:	50 Hz	Capacitor:	5 uF

Diagram

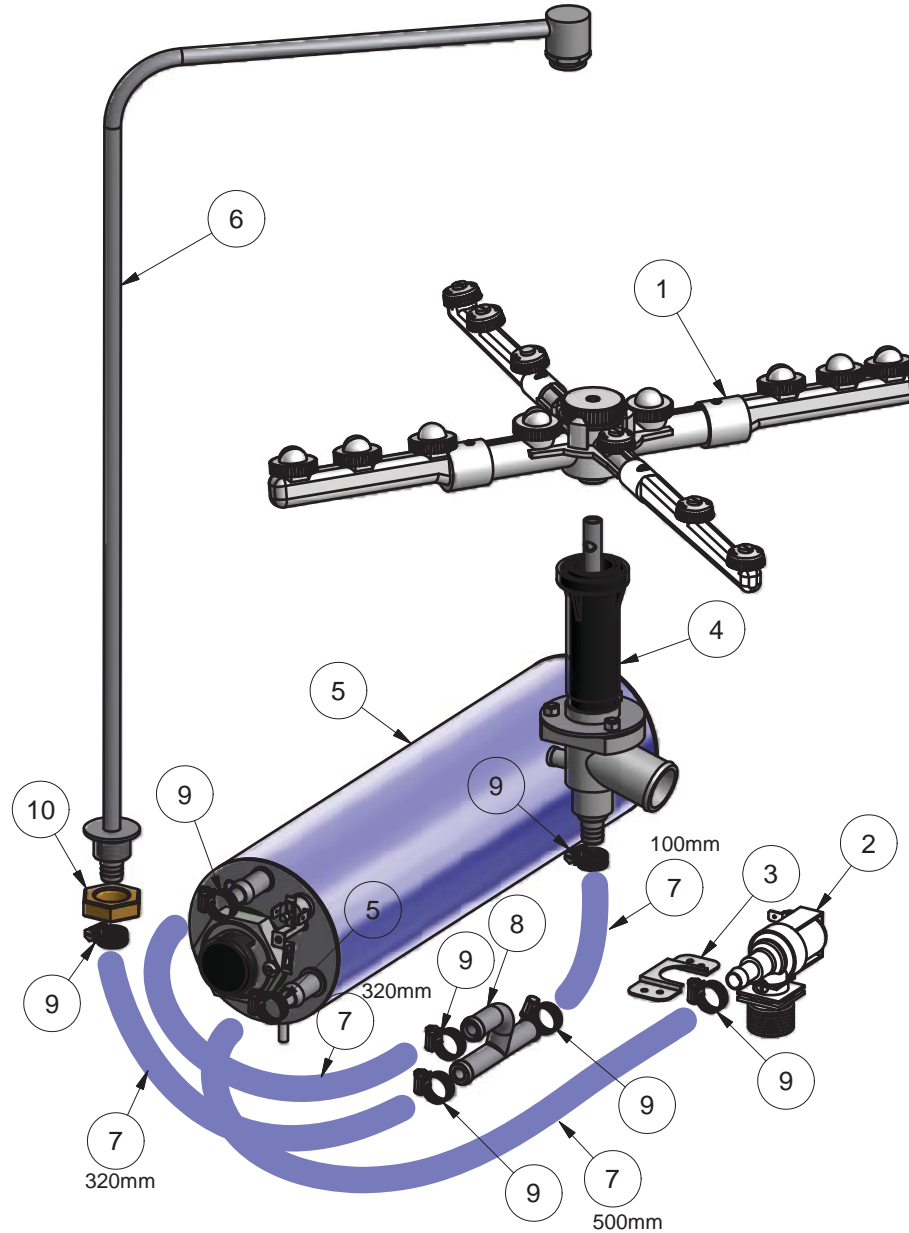


Replacement

Drain the wash tank and switch off the power.
Disconnect the wires from the wash pump connectors.
Release the hose clamps on the inlet and outlet pump hoses and remove the pump.
Replace in reverse order.

XG RINSE SYSTEM

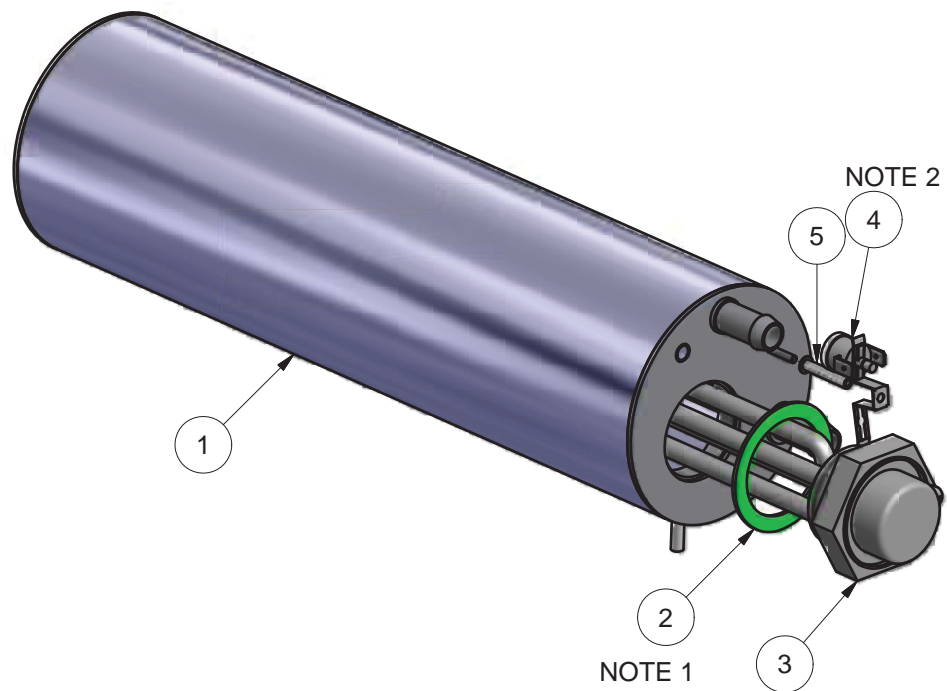
XG 0003 29/09/2011 REV 3-B



Parts List			
ITEM	PART NUMBER	DESCRIPTION	QTY
1	600 40005	ASSEMBLY GM5 WASH ARM	1
2	3342	SOLENOID VALVE GL1 WAY 90 DEG	1
3	1247	INLET SOLENOID SUPPORT	1
4	173 10009	GM6/GL6/XG WASH COLUMN ASSY	1
5	205 10205	XG RINSE TANK ASSEMBLY	1
6	205 10108	XG FIXED JET UPPER RINSE ASSY	1
7	600 60073	HOSE HOTOTAL 11x 19 MM	1
8	400 90076	SS RINSE TEE	1
9	ASS06	HOSE CLAMP	8
10	1955	NUT BULK HEAD 1/2"	1

XG RINSE TANK ASSEMBLY

205 10205 3/02/2011 REV 3-C



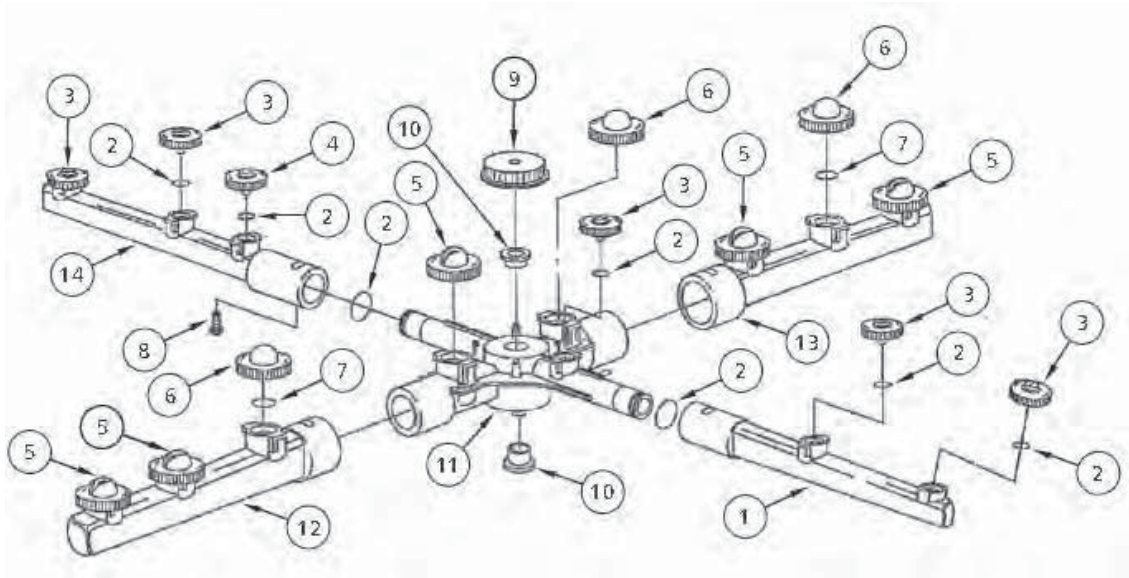
NOTE 1: USE GRAPHITE JOINING COMPOUND ON BOTH SIDES OF GASKET BEFORE INSERTING ONTO ELEMENT

NOTE 2: USE HEAT TRANSFER COMPOUND UNDER THERMOSTAT HEAD

Parts List			
ITEM	PART NUMBER	DESCRIPTION	QTY
1	205 10200	XG RINSE TANK SUB ASSEMBLY	1
2	3006	ELEMENT GASKET	1
3	600 30249	3KW ELEMENT	1
4	600 30088	TSTAT TY60/R-110C [WITH E BKT]	1
5	600 80064	STANDOFF M3 x 12	1

GM/GL6/XG WASH ARM ASSY

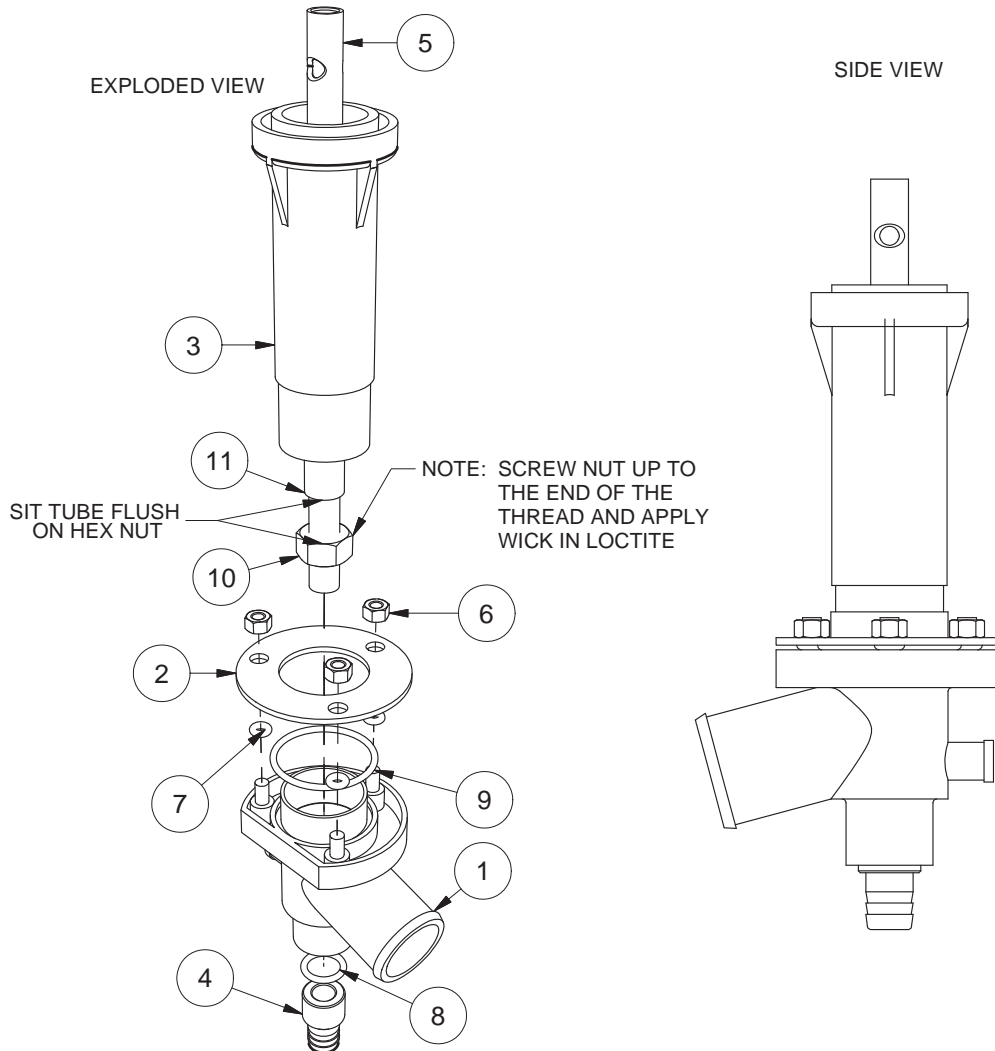
600 40005 06-10-09 1C



ITEM	CO	DE	DESCRIPTION	QTY
1	REF		2 JET RINSE ARM	1
2	600 40051		011 O-RING	7
3	600 40049		GM5 RINSE JET	4
4	600 40050		GM5 BLIND RINSE JET	1
5	600 40046		GM5 WASH JET	4
6	600 40047		BLIND WASH JET	2
7	600 40048		014 O-RING	6
8	600 40063		ARM SECURING SCREW	1
9	600 40062		THUMB SCREW	1
10	600 40064		BUSH	1
11	REF		WASH ARM CENTRAL CROSS	1
12	REF		WASH ARM "A"	1
13	REF		WASH ARM "B"	1
14	REF		3 JET RINSE ARM	1

GM6/GL6/XG WASH COLUMN ASSY

173 10009 8/06/2010 REV 3-F

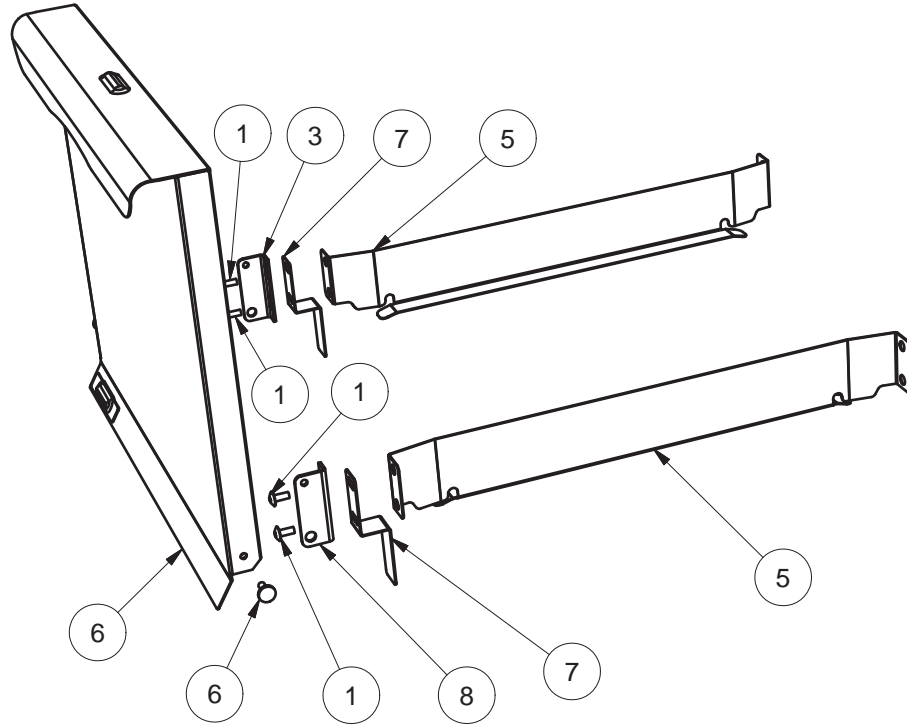


Parts List			
ITEM	PART NUMBER	DESCRIPTION	QTY
1	600 40012	TEE GM5 LOWER WASH	1
2	600 40009	FLANGE GM5 WASH TEE	1
3	600 40008	COLUMN GM5 WASH	1
4	400 30208	G SERIES RINSE CONNECTOR	1
5	600 40007	SPINDLE GM5 WASH	1
6	8110	M5 SS HEX NUT	3
7	600 40011	O RING 5x2 N70	3
8	ARP110	O RING ARP110	1
9	ARP123	O RING ARP123	1
10	600 80090	M10 x1mm PITCH S/S NUT	1
11	4009	TUBE SS 12.7 x 0.9 #304 POL x 113mm LONG	1

GX DOOR & RACK SLIDES ASSEMBLY

205 10001 2/03/2010 REV 3-A

PERSPECTIVE EXPLODED VIEW

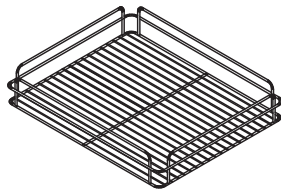


Parts List			
ITEM	PART NUMBER	DESCRIPTION	QTY
1	600 80017	M5 x 12 SS TRUSS HEAD SCREW	4
2	11153	BUSH DOOR HINGE BRACKET	2
3	173 20009	BRKT GM5 LEFT DOOR HINGE	1
4	123 20004	DOOR MAGNET DIMPLE BRKT	1
5	205 20001	XG RACKSLIDE	2
6	205 10014	GX DOOR ASSEMBLY	1
7	205 20017	XG SPLASH BAFFLE	2
8	173 20008	BRKT GM5 RIGHT DOOR HINGE	1
9	600 30257	DIA 6x30mm MAGNET	1

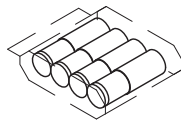
Accessories

WASHTECH XG ACCESSORIES

XG ACW 15-07-10 1 A



K0401
GLASS RACK 365mm

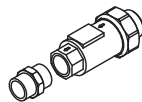


600 90021
ASSY GA/GM LEG (INOX 32x180xM10)

7026@
BAG MINIGRIP 230 x 305 x 70mu



600 60080
2m HOSE ANGLE END



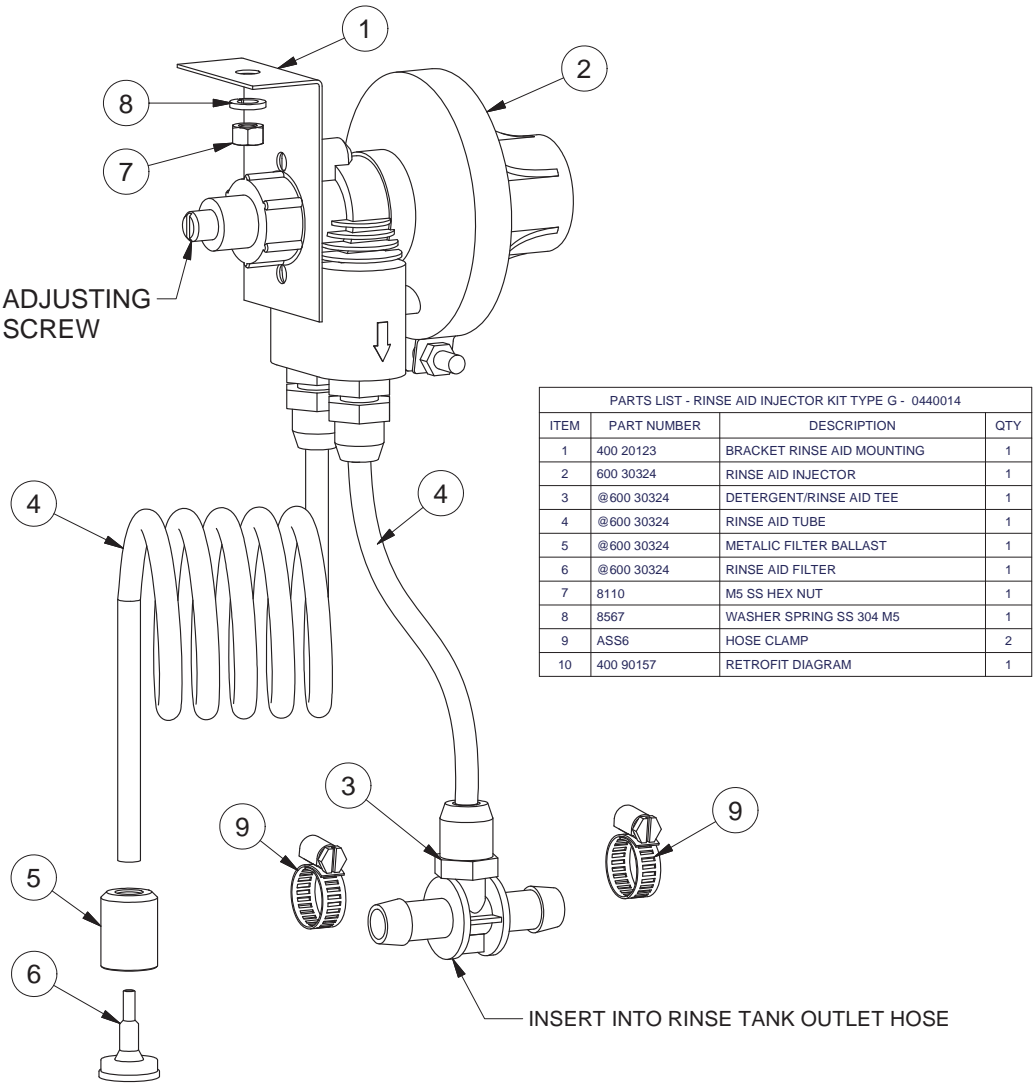
600 60108
DUAL CHECK VALVE

600 60111
3/8-3/8 HEX NIPPLE FITTING

Appendices

R/AID INJECTOR KIT TYPE G - P/N 0440014

400 90157 9/03/2010 REV 1-A



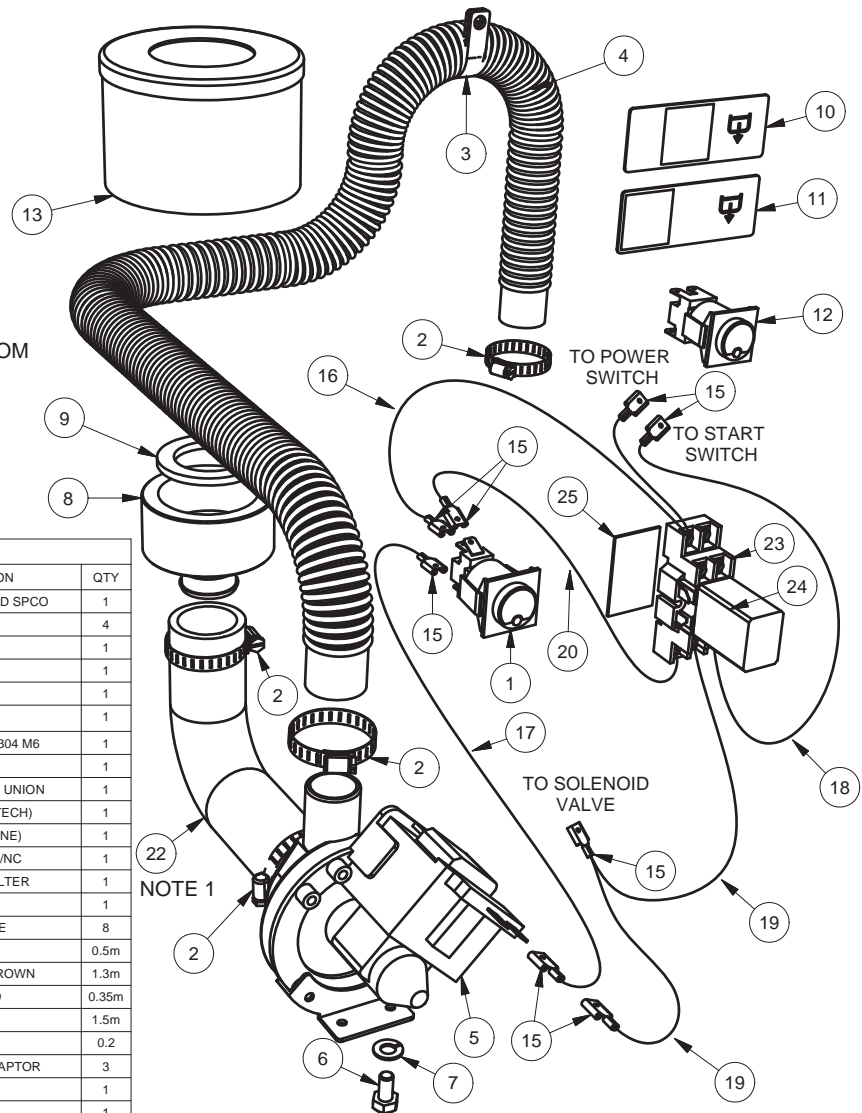
I

DRAIN PUMP KIT 0440034 - GM5/UE5/XG

400 90149 21/12/2010 REV 1-F

NOTE 1:
FOR XG CUT OFF 60MM FROM
EACH SIDE OF HOSE #22

DRAIN PUMP KIT 0440034			
ITE	PART NUMBER	DESCRIPTION	QTY
1	600 30102	SWITCH C/RINSE ROLD SPCO	1
2	ASS16	HOSE CLAMP	4
3	600 30173	P CLIP	1
4	600 60105	HOSE DRAIN 2.5M	1
5	600 60102	DRAIN PUMP	1
6	88461	MS HX SS 304 M6 x 12	1
7	8566	WASHER SPRING SS 304 M6	1
8	38823	DRAIN PUMP UNION	1
9	38824	GASKET DRAIN PUMP UNION	1
10	173 71002	DRAIN LABEL (WASHTECH)	1
11	173 70002	DRAIN LABEL (STARLINE)	1
12	600 30213	SWITCH DRAIN 2P NO/NC	1
13	400 10021	ASSY DRAIN PUMP FILTER	1
14	400 90149	RETROFIT DIAGRAM	1
15	H3560	TERMINAL RED SPADE	8
16	600 30015	WIRE 0.75 RED	0.5m
17	600 30032	WIRE 0.75 YELLOW/BROWN	1.3m
18	600 30034	WIRE 0.75 WHITE/RED	0.35m
19	600 30016	WIRE 0.75 BLACK	1.5m
20	600 30023	WIRE 0.75 BROWN	0.2
21	H1909B	TERMINAL SPADE ADAPTOR	3
22	600 90074	UHB25 HOSE BEND	1
23	600 30081	BASE 2 POLE RELAY	1
24	600 30080	RELAY 2 POLE (240VAC)	1
25	REF	3M VHB TAPE x 40mm	1



Information supplied in this manual is copyright. No part of this work may be reproduced or copied in any form or by any means, electronic or mechanical without the express permission of the author / publisher.



Distributed In
Australia by

MOFFAT®

740 Springvale Road, Mulgrave 3170, Victoria, Tel 03 9518 3888 Fax 03 9518 3818

Service 1 800 622 216
Parts 1 800 337 963

