

XG

Series 2

UNDERCOUNTER GLASSWASHER



Parts Manual

Spare Parts

DESCRIPTION	PART NO
Cabinet & Door	
Control Panel Label	205 70002
Door Assembly	205 11014
Door Latch	205 20046
Front Panel	205 21016
Rear Safety Panel	205 20018
Controls & Indicators	
Cord Set 15A	600 30255
Door Reed Switch	600 30183
Drain Switch	600 30102
Power Light	600 30161
Power Switch	600 30214
Pressure Switch	600 30266
Ready Light	600 30162
Relay	600 30080
Relay Base	600 30081
Run Light	600 30163
Start Switch	600 30101
Timer	32621 001
Heating Components	
Over Temperature Thermostat	600 30088
Rinse Element 3 KW	600 30249
Rinse Tank Assembly	205 10205
Rinse / Wash Thermostat	30201
Wash Element 2.5KW	60030160
Hoses & Fittings	
Drain Hose 2.5m	600 60105
Hose Clamp 6 mm	ASS 6
Hose Clamp 16 mm	ASS 16
Pressure Switch Hose (135mm)	3067
Rinse Hose (specify length)	600 60073
Wash Pump Inlet Hose (65mm)	6196
Wash Pump Outlet Hose	400 90121

Spare Parts

DESCRIPTION	PART NO
Pumps & Solenoids	
Detergent Pump	600 30094
Detergent Pump Hose	600 30148
Detergent Squeeze Tube	600 30134
Drain Pump	600 60102
Flow Restrictor 6.7L.min	600 30310
Rinse Aid Injector	600 30324
Solenoid Valve	3342
Wash Pump	600 30327
Wash Tank Components	
Drain Upstand	279 10018
Fixed Jet Rinse Arm Assembly	205 10108
Pressure Bell	400 90135
Pressure Bell O Ring	ARP 205
Rinse Nozzle Closed Head	600 40050
Rinse Nozzle Opened Head	600 40049
Rinse Nozzle O-Ring (OR R6 NBR)	600 40051
Wash Arm Column Assembly	173 10009
Wash / Lower Rinse Arm Assembly	600 40005
Wash Nozzle Closed Head	600 40047
Wash Nozzle Opened head	600 40046
Wash Nozzle O-Ring (OR 2050 NBR)	600 40048
Wash /Drain Pump Inlet Filter	400 10038

Note:

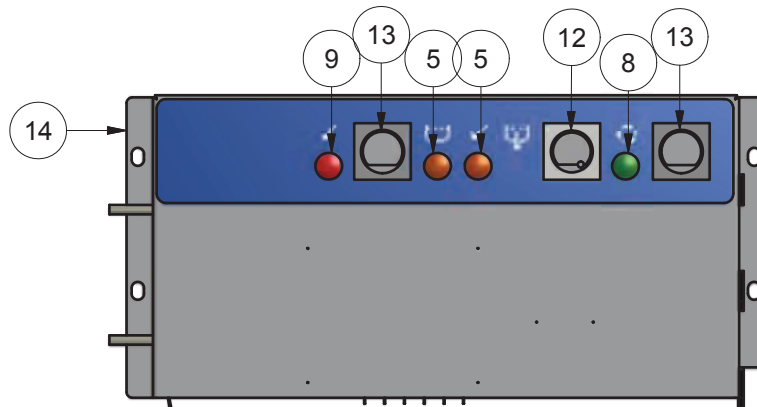
For more parts look in the section “Assembly Diagrams”.

Assembly Diagrams

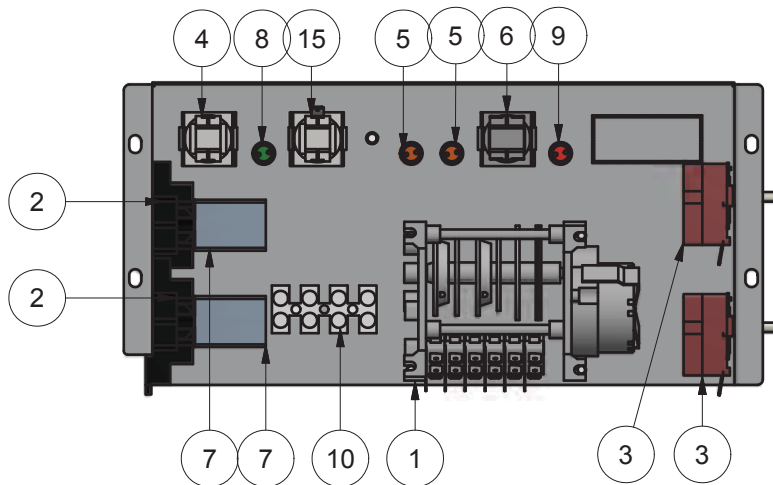
XG-2 WIRING TRAY ASSEMBLY

205 12020 19/07/2013 REV 3-A

FRONT VIEW



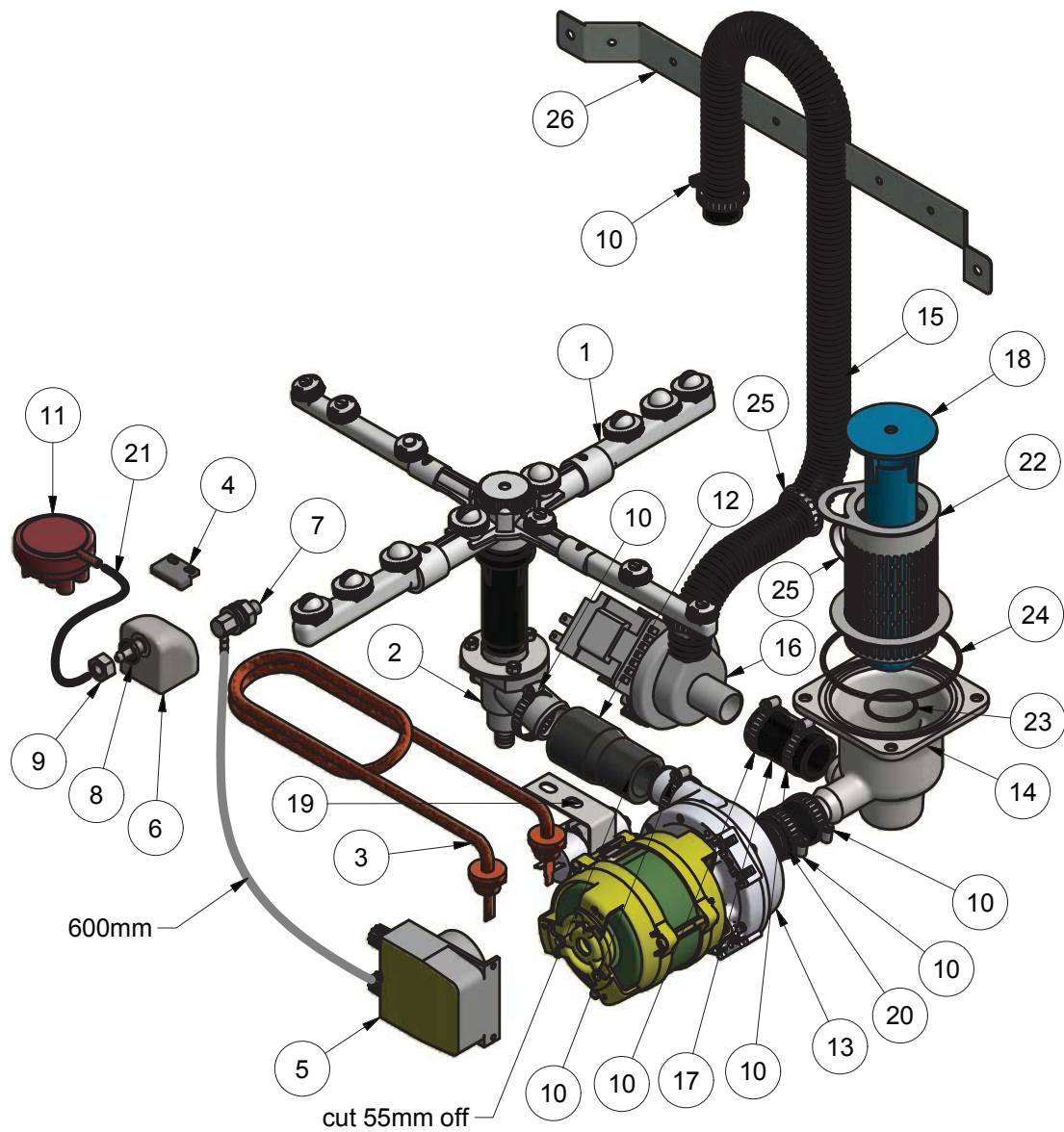
REAR VIEW



Parts List			
ITEM	PART NUMBER	DESCRIPTION	QTY
1	32621 001	TIMER 60SEC 6 CAM RAPID START	1
2	600 30081	BASE 2 POLE RELAY	2
3	30201	THERMOSTAT 1 POLE	2
4	600 30101	SWITCH START ROLD-SP MOMENTARY	1
5	600 30162	LENS & NEON ASSY (AMBER) 12mm	2
6	600 30214	SWITCH POWER 2P NO/NO LATCHED	1
7	600 30080	RELAY 2 POLE (240VAC)	2
8	600 30163	LENS & NEON ASSY (GREEN) 12mm	1
9	600 30161	LENS & NEON ASSY (RED) 12mm	1
10	32271	TERMINAL STRIP 4 WAY	1
11	205 70002	XG-2 CONTROL PANEL LABEL	1
12	600 30463	ROUND GREY BUTTON WITH WINDOW	1
13	600 30464	ROUND GREY BUTTON	2
14	205 12016	XG-2 WIRING TRAY SUB ASSEMBLY	1
15	600 30102	SWITCH C/RINSE ROLD SPCO	1

XG-2 WASH SYSTEM

XG 0004 27/09/2013 REV 3-A



Parts List				Parts List			
ITEM	PART NUMBER	DESCRIPTION	QTY	ITEM	PART NUMBER	DESCRIPTION	QTY
1	600 40005	GM5 WASH ARM ASSEMBLY	1	14	400 90158	CASTING XG/GM WASH & DRAIN SUMP	1
2	173 10009	GM6/GL6/XG WASH COLUMN ASSY	1	15	600 60105	HOSE DRAIN PUMP 2.5M	1
3	600 30160	ELEMENT 2500W BENT ELEMENT	1	16	600 60102	DRAIN PUMP B20-6 220-240V 50Hz	1
4	600 30183	REED SWITCH STEM	1	17	6197	HOSE 22mm	65mm
5	600 30094	PERI PUMP 1.5L/H SEKO-KIT	1	18	279 10018	UPSTAND UD6 DRAIN	1
6	400 90135	SQUARE PRESSURE BELL CASTING	1	19	214 20005	WASH PUMP BRACKET	1
7	INJECTOR	DETRGENT INJECTOR @600 30094	1	20	6196	HOSE 25mm 2 PLY RADIATOR	65mm
8	ARP205	O-RING 11IDx18OD	1	21	3067	HOSE PRESSURE SWITCH	135mm
9	600 80009	M10 SS HX NUT	1	22	400 10038	XG/GM Filter Assy	1
10	ASS16	HOSE CLAMP	8	23	ARP38x2	O-RING ARP38x2 N70	1
11	600 30266	PRESSURE SWITCH 50/25MM	1	24	ARP89x4	89 x 4 N70 O Ring	1
12	400 90121	WASH PUMP OUTLET HOSE	1	25	600 30331	GROMMET 31.8 MM	2
13	600 30327	WASH PUMP GM	1	26	211 20019	HOSE SUPPORT BRACKET	1

Wash Pump

Part Number

600 30327

Function

Pumps water from the wash tank to the wash arms providing a recirculating wash cycle.

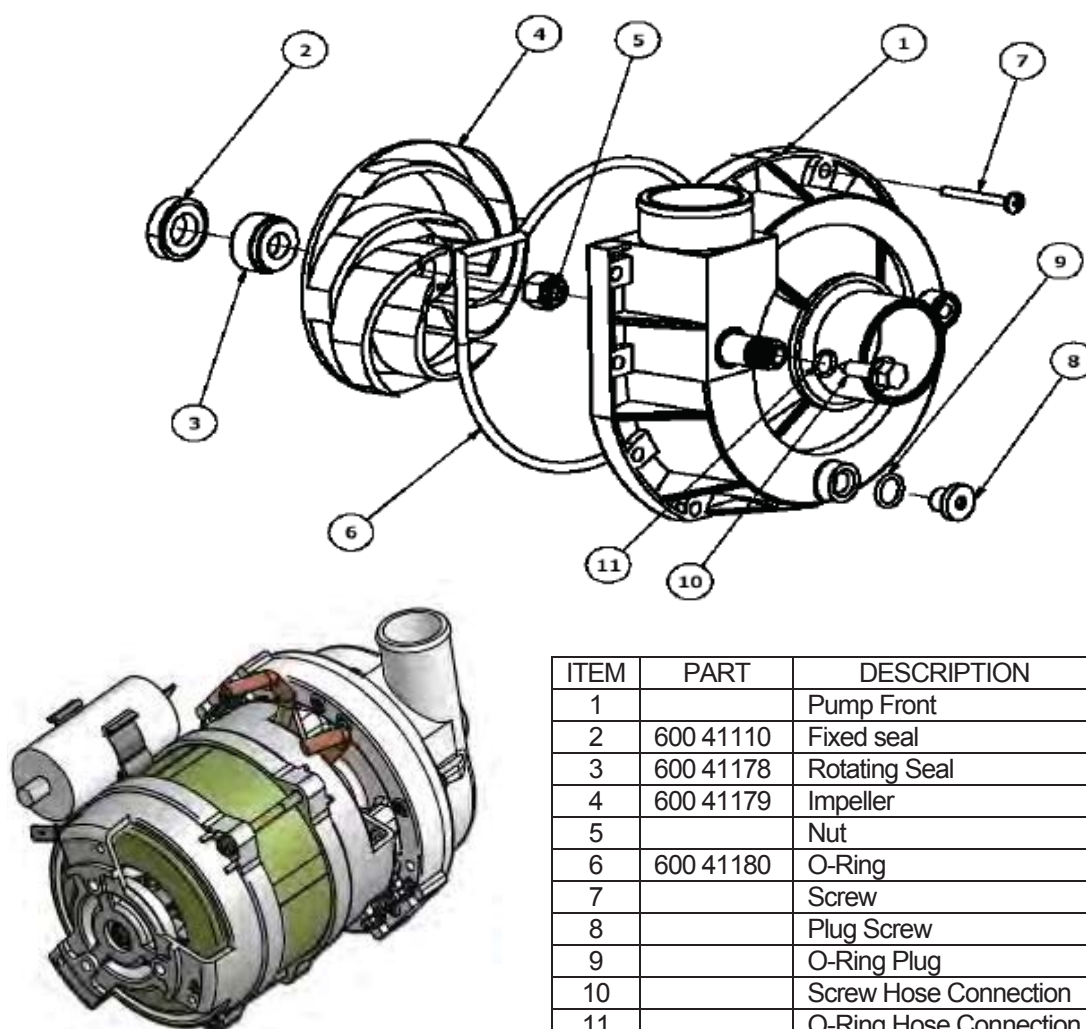
Description

Electric Pump CRC-L/SX

Power: 0.24 kW
Voltage: 230 V
Frequency: 50 Hz

Speed: 2800 rpm
Amperes: 1.1 A
Capacitor: 5 uF

Diagram

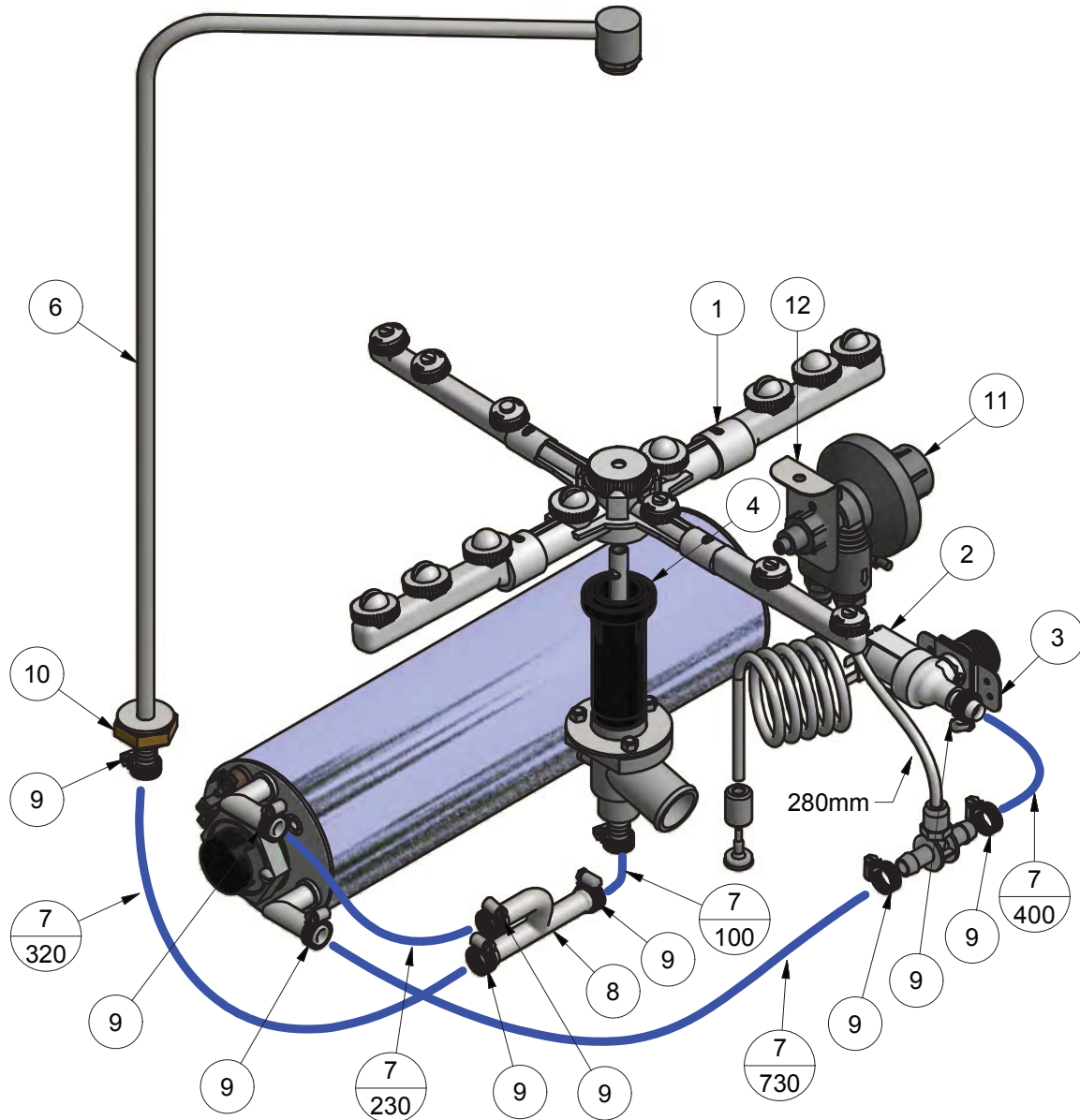


Replacement

Drain the wash tank and switch off the power.
Disconnect the wires from the wash pump connectors.
Release the hose clamps on the inlet and outlet pump hoses and remove the pump.
Replace in reverse order.

XG-2 RINSE SYSTEM

XG 0005 15/07/2013 REV 3-A

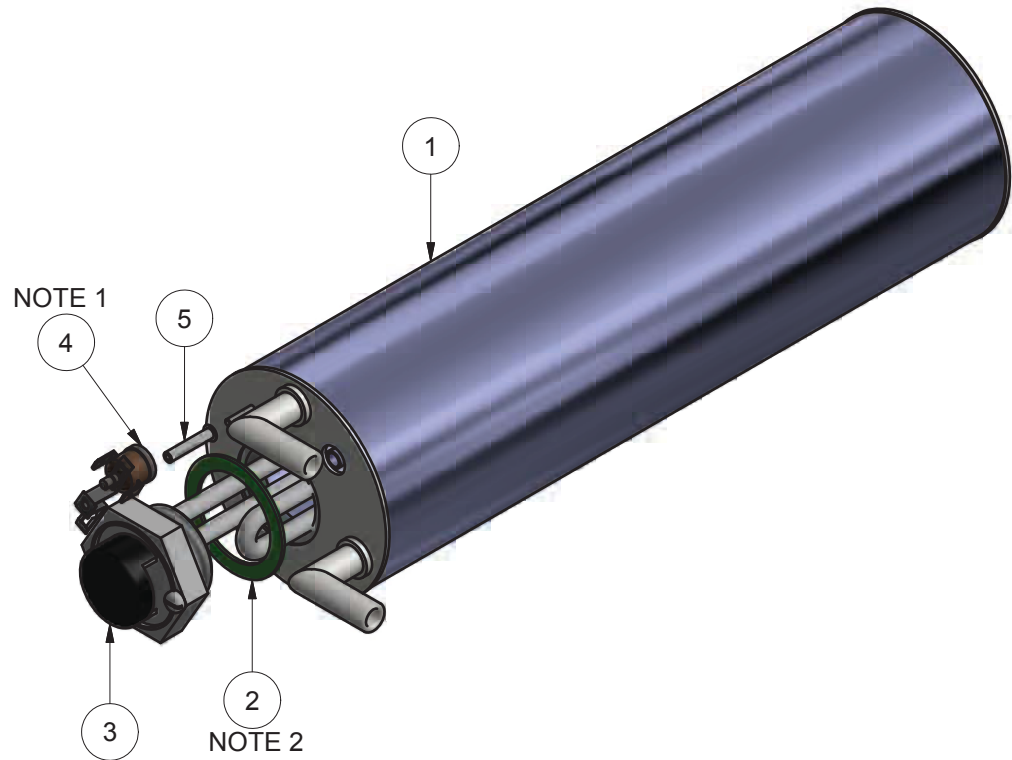


Parts List

ITEM	PART NUMBER	DESCRIPTION	QTY
1	600 40005	GM5 WASH ARM ASSEMBLY	1
2	3342	SOLENOID VALVE 1 WAY 90 DEG	1
3	1247	INLET SOLENOID SUPPORT	1
4	173 10009	GM6/GL6/XG WASH COLUMN ASSY	1
5	205 10205	XG RINSE TANK ASSEMBLY	1
6	205 10108	XG FIXED JET UPPER RINSE ASSY	1
7	600 60073	HOSE HOTOTAL 11x 19 MM	1.6
8	400 90076	SS RINSE TEE	1
9	ASS06	HOSE CLAMP	10
10	1955	NUT BULK HEAD 1/2"	1
11	600 30324	RINSE AID INJECTOR KIT	1
12	400 20123	BRACKET RINSE AID MOUNTING	1

XG RINSE TANK ASSEMBLY

205 10205 19/09/2013 REV 3-D



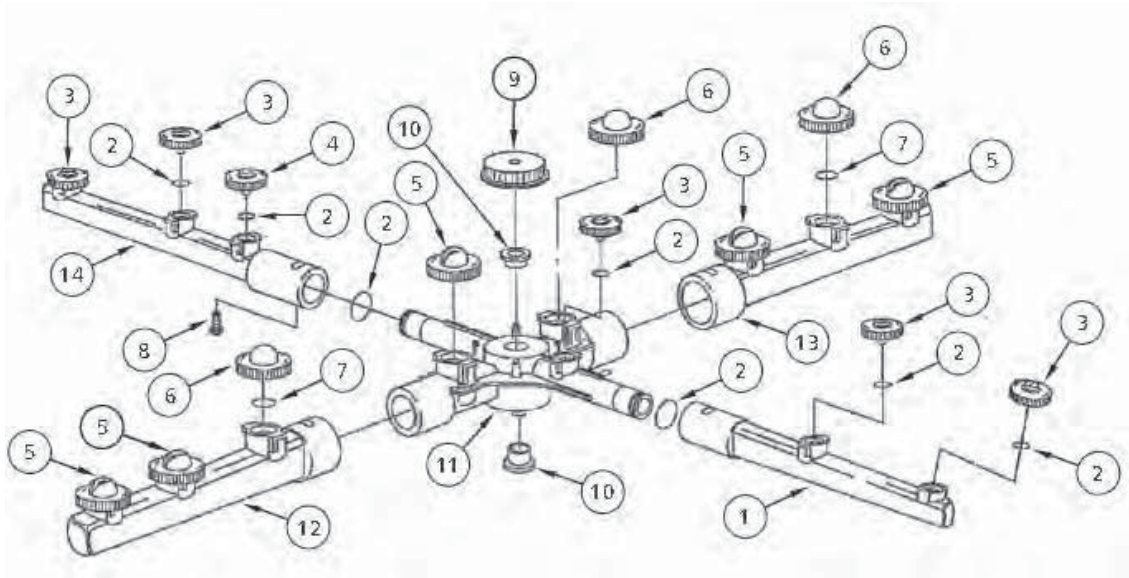
NOTE 1: USE GRAPHITE JOINING COMPOUND ON BOTH SIDES OF GASKET BEFORE INSERTING ONTO ELEMENT

NOTE 2: USE HEAT TRANSFER COMPOUND UNDER THERMOSTAT HEAD

Parts List			
ITEM	PART NUMBER	DESCRIPTION	QTY
1	205 10200	XG RINSE TANK SUB ASSEMBLY	1
2	3006	ELEMENT GASKET	1
3	600 30249	3KW ELEMENT	1
4	600 30088	THERMOSTAT TY60/R-110C [With E Bkt]	1
5	600 80064	STANDOFF M3 x 12	1

GM/GL6/XG WASH ARM ASSY

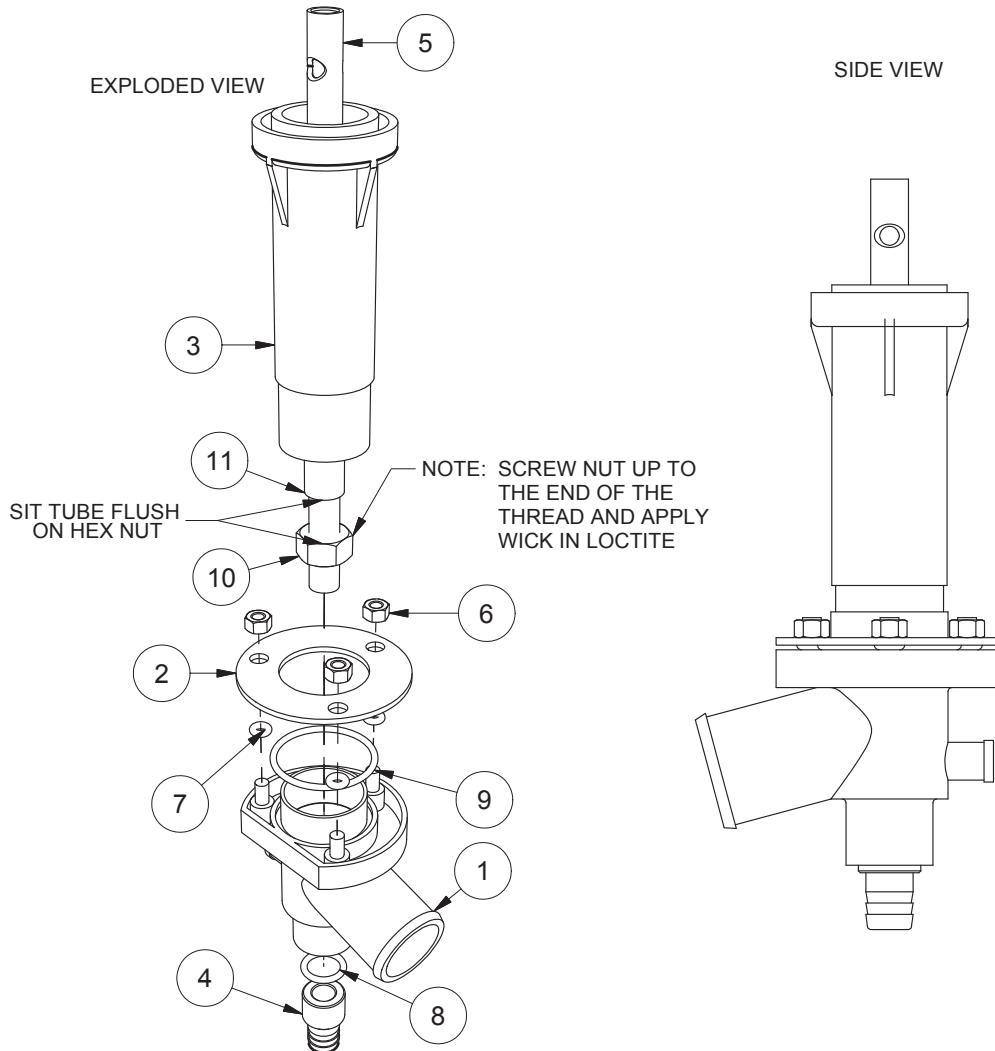
600 40005 06-10-09 1C



ITEM	CO	DE	DESCRIPTION	QTY
1	REF		2 JET RINSE ARM	1
2	600 40051		011 O-RING	7
3	600 40049		GM5 RINSE JET	4
4	600 40050		GM5 BLIND RINSE JET	1
5	600 40046		GM5 WASH JET	4
6	600 40047		BLIND WASH JET	2
7	600 40048		014 O-RING	6
8	600 40063		ARM SECURING SCREW	1
9	600 40062		THUMB SCREW	1
10	600 40064		BUSH	1
11	REF		WASH ARM CENTRAL CROSS	1
12	REF		WASH ARM "A"	1
13	REF		WASH ARM "B"	1
14	REF		3 JET RINSE ARM	1

GM6/GL6/XG WASH COLUMN ASSY

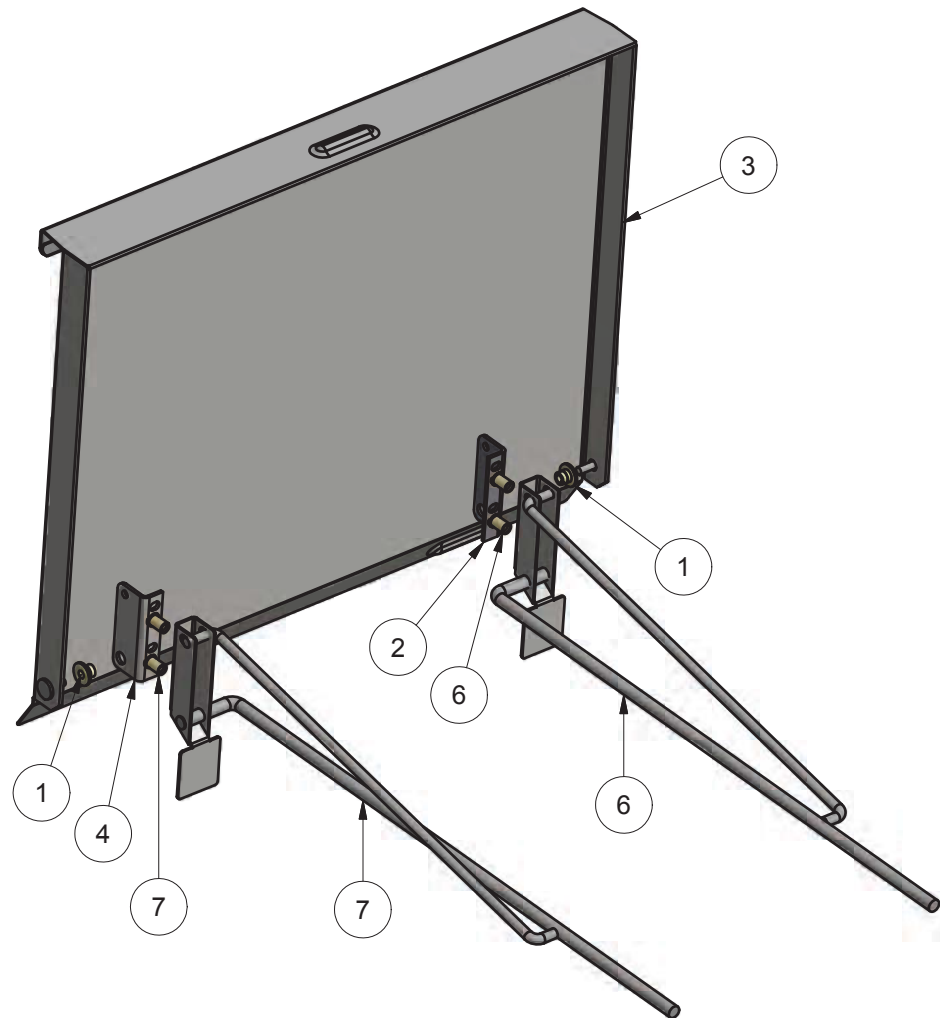
173 10009 8/06/2010 REV 3-F



Parts List			
ITEM	PART NUMBER	DESCRIPTION	QTY
1	600 40012	TEE GM5 LOWER WASH	1
2	600 40009	FLANGE GM5 WASH TEE	1
3	600 40008	COLUMN GM5 WASH	1
4	400 30208	G SERIES RINSE CONNECTOR	1
5	600 40007	SPINDLE GM5 WASH	1
6	8110	M5 SS HEX NUT	3
7	600 40011	O RING 5x2 N70	3
8	ARP110	O RING ARP110	1
9	ARP123	O RING ARP123	1
10	600 80090	M10 x1mm PITCH S/S NUT	1
11	4009	TUBE SS 12.7 x 0.9 #304 POL x 113mm LONG	1

XG-2 DOOR & RACK ASSEMBLY

205 11001 10/04/2013 REV 3-A

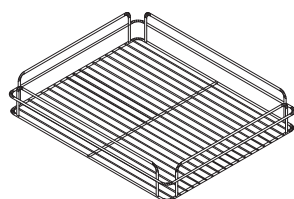


Parts List			
ITEM	PART NUMBER	DESCRIPTION	QTY
1	11154	BUSH DOOR HINGE BRACKET-LONG	2
2	173 20009	BRKT GM5 LEFT DOOR HINGE	1
3	205 11014	XG-2 DOOR ASSEMBLY	1
4	173 20008	BRKT GM5 RIGHT DOOR HINGE	1
5	600 30257	DIA 6x30mm MAGNET	1
6	205 12018	XG-2 RACK SLIDE ASSEMBLY LH	1
7	205 12019	XG-2 RACK SLIDE ASSEMBLY RH	1

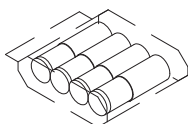
Asseccories

WASHTECH XG-2 ACCESSORIES

XG-2 ACW 18/09/13 1A

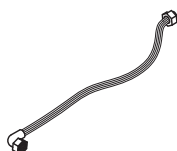


K0401
GLASS RACK 365mm

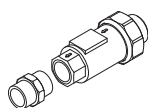


600 90021
ASSY GA/GM LEG (INOX 32x180xM10)

7026@
BAG MINIGRIP 230 x 305 x 70mu



600 60080
2m HOSE ANGLE END



600 60108
DUAL CHECK VALVE

600 60111
3/8-3/8 HEX NIPPLE FITTING

Information supplied in this manual is copyright. No part of this work may be reproduced or copied in any form or by any means, electronic or mechanical without the express permission of the author / publisher.



Distributed In
Australia by

MOFFAT®

740 Springvale Road, Mulgrave 3170, Victoria, Tel 03 9518 3888 Fax 03 9518 3818

Service 1 800 622 216
Parts 1 800 337 963

