

ITEM	CODE	DESCRIPTION	QTY
1	275 90010	HOSE UD WASH PUMP OUTLET	1
2	ASS28	HOSECLIP ASS28	4
3	ASS16	HOSECLIP ASS16	2
4	ARP113	O RING ARP113	1
5	3888	PUMP WASH GL GLV SL M1 0.5hp	1
6	6037	BACKNUT 126 X 40mm	1
7	1896	GASKET FOR 40mm DRAIN WASTE	1
8	C190205	UPPER TEE W/R ARM F45 GLV	1
9	ARP328	O-RING ARP328	3
10	C420526	ARM WASH/RINSE F45 PLASTIC M2	2
11	2010	GASKET GM/GLV/UD WASH INLET 45x33x3	1
12	1262	HOSE WASH PUMP INLET UHB44	1
13	ARP339	O RING ARP339	1
14	C191025	WASH FEED LOWER INTERNAL F45	1
15	C160301	DRAIN OUTLET 1-1/2	1
16	276 10006	ASSY UD W'TECH DRAIN UPSTAND	1
17	C160204	ELBOW F.DRAIN-GLASS WASHER	1

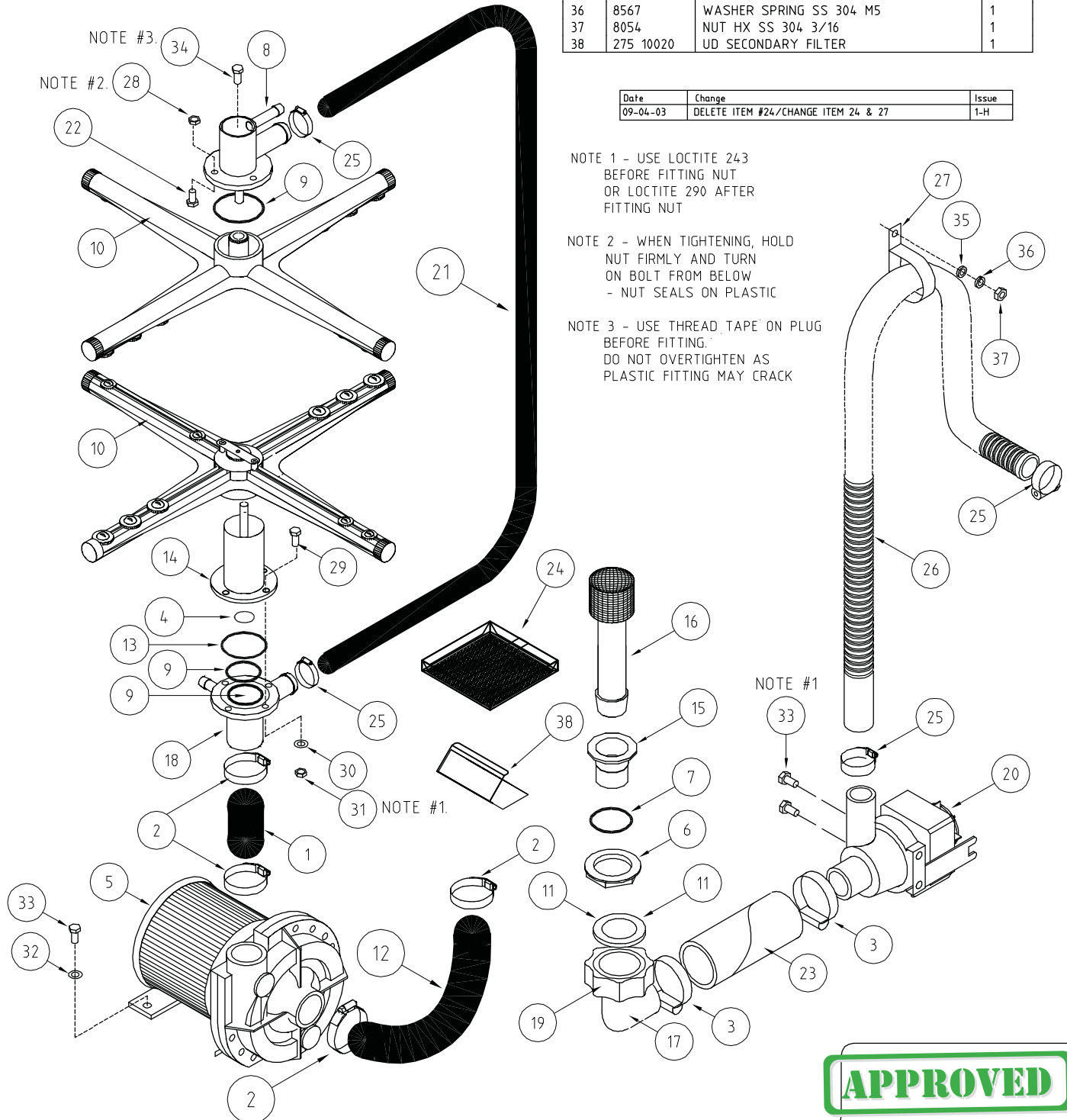
ITEM	CODE	DESCRIPTION	QTY
18	C190203	WASH FEED EXTERNAL TEE F45	1
19	C180102	BACKNUT DRAIN WASTE 15	1
20	388344	PUMP HANNING DRAIN	1
21	400 90012	HOSE GLV & UD UPPER WASH	1
22	600 80015	MS HX SS 304 M6 X 16	4
23	275 90011	HOSE UD DRAIN PUMP INLET	1
24	275 10021	UD PRIMARY FILTER	1
25	ASS16	HOSECLIP ASS16	4
26	473345	HOSE DRAIN PUMP	1
27	600 30173	P-CLIP 30	1
28	600 80013	NUT NYLOC SS M6	4
29	8846	MS HX SS 304 M6 X 25	4
30	8504	WASHER FL SS 304 M6	4
31	8106	NUT HX SS 304 M6	4
32	8566	WASHER SPRING SS 304 1/4	1
33	88461	MS HX SS 304 M6 X 12	3
34	6023	PLUG WASH T BOTTOM (M10 X 8mm)	1
35	600 80026	WASHER FL SS 304 M5	1
36	8567	WASHER SPRING SS 304 M5	1
37	8054	NUT HX SS 304 3/16	1
38	275 10020	UD SECONDARY FILTER	1

Date	Change	Issue
09-04-03	DELETE ITEM #24/CHANGE ITEM 24 & 27	1-H

NOTE 1 - USE LOCTITE 243  
BEFORE FITTING NUT  
OR LOCTITE 290 AFTER  
FITTING NUT

NOTE 2 - WHEN TIGHTENING, HOLD  
NUT FIRMLY AND TURN  
ON BOLT FROM BELOW  
- NUT SEALS ON PLASTIC

NOTE 3 - USE THREAD TAPE ON PLUG  
BEFORE FITTING.  
DO NOT OVERTIGHTEN AS  
PLASTIC FITTING MAY CRACK



**WASHTECH**  
PROFESSIONAL WASH SYSTEMS

414 ROSEBANK ROAD,  
AUCKLAND,  
Tel (09) 829-0930

PO Box 90-548  
NEW ZEALAND  
Fax (09) 829-0930

**APPROVED**

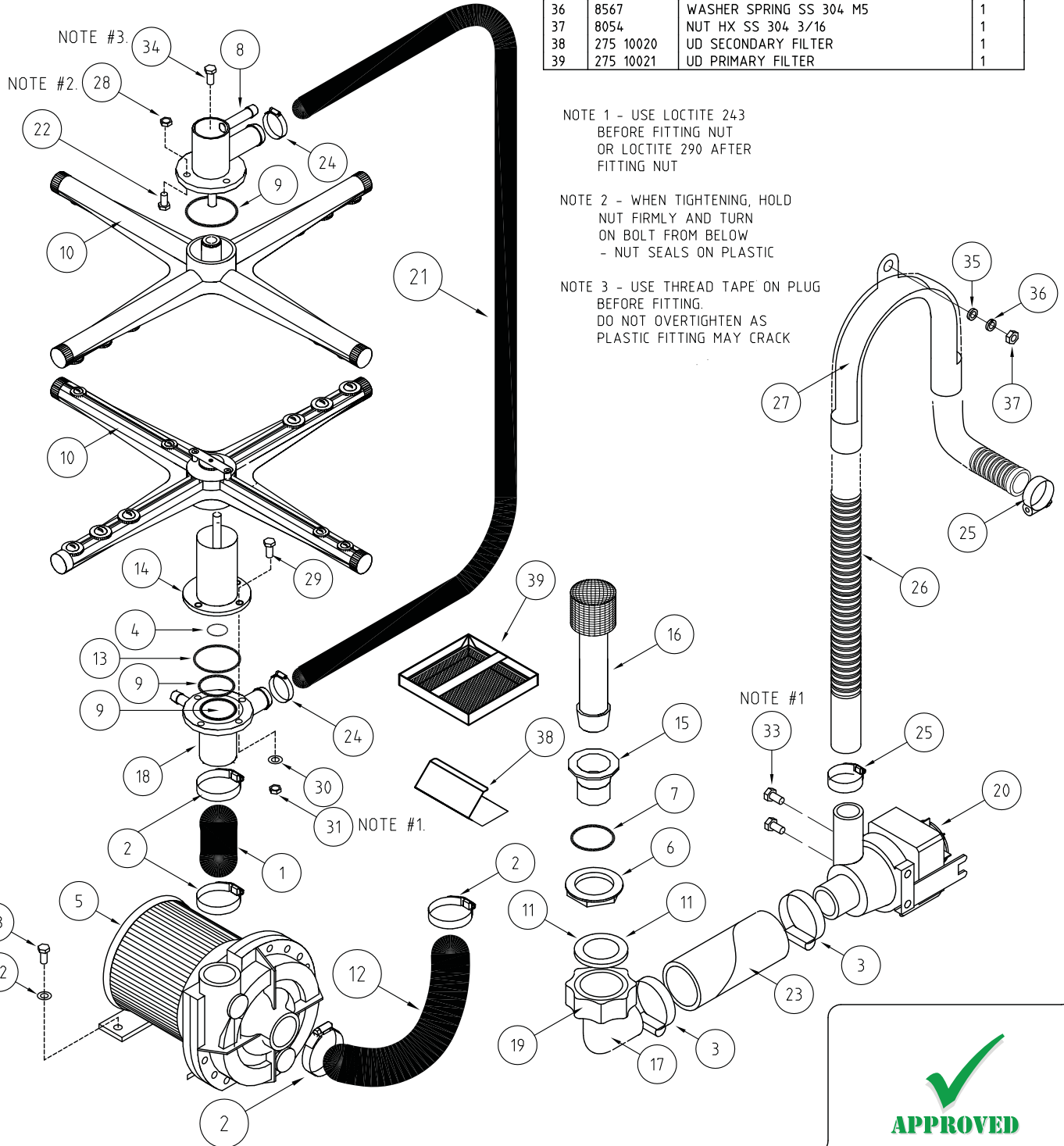
**Alexander Jouk**

UD00001

ISSUE NO. <b>1</b>	Rev. <b>H</b>	Description: WASH SYSTEM UD	Scale REF	Units: mm	Proj. 	Tolerance: REF	Checked by:	Approved by:
Issue Date: 09-04-03		©Washtech Ltd, October 2015	Material: AS SPECIFIED			Drawing No: UD00001		
			FINISH:					

ITEM	CODE	DESCRIPTION	QTY
1	275 90010	HOSE UD WASH PUMP OUTLET	1
2	ASS28	HOSECLIP ASS28	4
3	ASS16	HOSECLIP ASS16	2
4	ARP113	O RING ARP113	1
5	3888	PUMP WASH GL GLV SL M1 0.5hp	1
6	6037	BACKNUT 126 X 40mm	1
7	1896	GASKET FOR 40mm DRAIN WASTE	1
8	C190205	UPPER TEE W/R ARM F45 GLV	1
9	ARP328	O-RING ARP328	3
10	C420526	ARM WASH/RINSE F45 PLASTIC M2	2
11	2010	GASKET GM/GLV/UD WASH INLET 45x33x3	1
12	1262	HOSE WASH PUMP INLET UHB44	1
13	ARP339	O RING ARP339	1
14	C191025	WASH FEED LOWER INTERNAL F45	1
15	C160301	DRAIN OUTLET 1-1/2	1
16	276 10006	ASSY UD W'TECH DRAIN UPSTAND	1
17	C160204	ELBOW F.DRAIN-GLASS WASHER	1

ITEM	CODE	DESCRIPTION	QTY
18	C190203	WASH FEED EXTERNAL TEE F45	1
19	C180102	BACKNUT DRAIN WASTE 15	1
20	388344	PUMP HANNING DRAIN	1
21	400 90012	HOSE GLV & UD UPPER WASH	1
22	600 80015	MS HX SS 304 M6 X 16	4
23	275 90011	HOSE UD DRAIN PUMP INLET	1
24	ASS24	HOSECLIP ASS24	2
25	ASS10	HOSECLIP ASS10	2
26	473345	HOSE DRAIN PUMP	1
27	473352	DRAIN HOSE SUPPORT	1
28	600 80013	NUT NYLOC SS M6	4
29	8846	MS HX SS 304 M6 X 25	4
30	8504	WASHER FL SS 304 M6	4
31	8106	NUT HX SS 304 M6	4
32	8566	WASHER SPRING SS 304 1/4	1
33	88461	MS HX SS 304 M6 X 12	3
34	6023	PLUG WASH T BOTTOM (M10 X 8mm)	1
35	600 80026	WASHER FL SS 304 M5	1
36	8567	WASHER SPRING SS 304 M5	1
37	8054	NUT HX SS 304 3/16	1
38	275 10020	UD SECONDARY FILTER	1
39	275 10021	UD PRIMARY FILTER	1



UNIT 1, 27 ALLGAS STREET, SLACKS CREEK,  
QUEENSLAND 4127, AUSTRALIA  
PH: (07) 3290-2877 FX: (07) 3290-2974

**WashTech** <sup>©</sup>

9 CORBAN AVENUE, PO Box 21-342  
HENDERSON, AUCKLAND, NEW ZEALAND  
PH: (09) 837-2372 FX: (09) 837-0880

UD0001

ISSUE NO. **1**  
Rev. **G**  
Issue Date:  
28-06-00

Description:  
WASH SYSTEM UD  
©Washtech Ltd, October 2015

Scale  
REF

Units:  
mm

Proj:

Tolerance:  
REF

Checked by:

Material: AS SPECIFIED

FINISH:

Drawn by:  
S.F.C

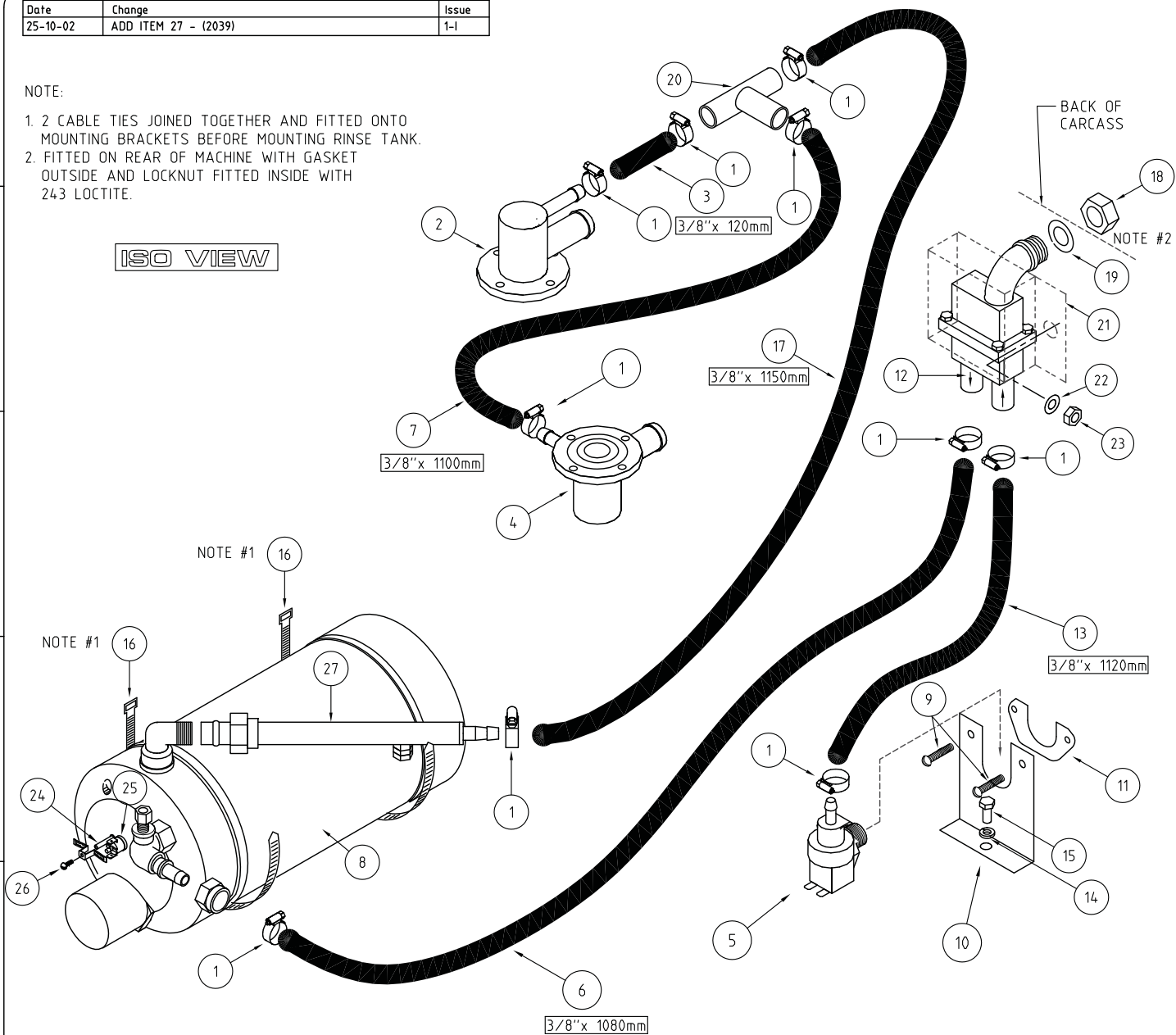
Drawing No:  
UD0001

Date	Change	Issue
25-10-02	ADD ITEM 27 - (2039)	1-I

NOTE:

- 2 CABLE TIES JOINED TOGETHER AND FITTED ONTO MOUNTING BRACKETS BEFORE MOUNTING RINSE TANK.
- FITTED ON REAR OF MACHINE WITH GASKET OUTSIDE AND LOCKNUT FITTED INSIDE WITH 243 LOCTITE.

ISO VIEW



ITEM	CODE	DESCRIPTION	QTY
1	600 90024	HOSECLIP COBRA CLIP NO. 16	10
2	C190205	UPPER TEE W/R ARM F45 GLV	1
3	400 90018	HOSE UD/GLV UPPER RINSE FEED	1
4	C190203	WASH FEED EXTERNAL TEE F45	1
5	3342	SOLENOID VALVE GL 1 WAY 90o	1
6	276 90011	HOSE UD RINSE TANK INLET	1
7	275 90018	HOSE UD LOWER RINSE FEED	1
8	276 10005	ASSY UD W'TECH RINSE TANK	1
9	8800	MS PAN POZI ZP M4 X 6	2
10	1246	BRACKET SOLENOID SUPPORT	1
11	1247	BRACKET INLET SOLENOID	1
12	400 10014	ASSY ATMOSPHERIC VACUUM BREAK	1
13	275 90013	HOSE UD VACUUM BREAK INLET	1
14	8566	WASHER SPRING SS 304 1/4 inch (M6)	1
15	88461	MS HX SS 304 M6 X 12	1
16	3207	CABLE TIE 338mm TY527MX	4
17	275 90016	HOSE UD RINSE TANK OUTLET	1
18	600 60033	BACKNUT 1/2 BSP PLASTIC	1
19	1894	GASKET-BULKHEAD FITTING	1
20	600 60020	TEE HOSE CONNECTOR 203x6	1

ITEM	CODE	DESCRIPTION	QTY
21	400 20028	VACUUM BREAK COVER	1
22	8567	WASHER SPRING SS 304 M5	1
23	8110	NUT HX SS 304 M5	1
24	400 30046	BRASS STANDOFF	1
25	600 30088	THERMOSTAT TY60/R	1
26	600 80052	M3 x 6 ZP SCREW	1
27	2039	GLV/UD RINSE TANK OUTLET PIPE	1

APPROVED

Ian Mcleod



**WASHTECH®**  
PROFESSIONAL WASH SYSTEMS

414 ROSEBANK ROAD,  
AUCKLAND,  
Tel (09) 829-0930

PO Box 90-548  
NEW ZEALAND  
Fax (09) 829-0930

UD00006

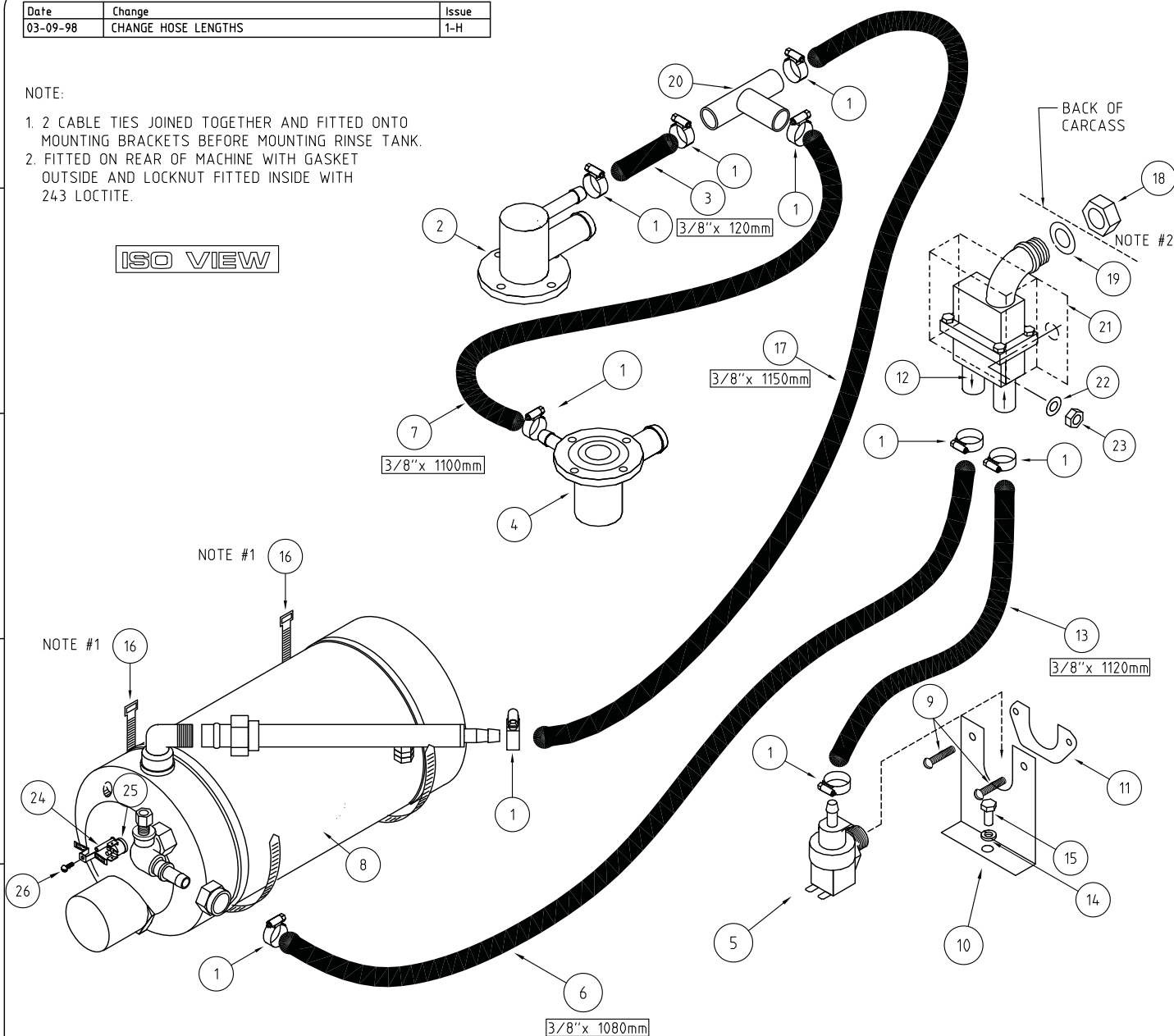
ISSUE NO: <b>1</b>	Rev: <b>1</b>	Description: RINSE SYSTEM UD W'TECH	Scale: NTS	Units: mm	Proj: 	Tolerance: REF	Checked by:	Approved by:
Issue Date: 25-10-02	©Washtech Ltd, October 2015		Material:					Drawn by: B.A.E
			FINISH:					Drawing No: UD00006

Date	Change	Issue
03-09-98	CHANGE HOSE LENGTHS	1-H

NOTE:

1. 2 CABLE TIES JOINED TOGETHER AND FITTED ONTO MOUNTING BRACKETS BEFORE MOUNTING RINSE TANK.
2. FITTED ON REAR OF MACHINE WITH GASKET OUTSIDE AND LOCKNUT FITTED INSIDE WITH 243 LOCTITE.

ISO VIEW



ITEM	CODE	DESCRIPTION	QTY
1	600 90024	HOSECLIP COBRA CLIP NO. 16	10
2	C190205	UPPER TEE W/R ARM F45 GLV	1
3	400 90018	HOSE UD/GLV UPPER RINSE FEED	1
4	C190203	WASH FEED EXTERNAL TEE F45	1
5	3342	SOLENOID VALVE GL 1 WAY 90o	1
6	276 90011	HOSE UD RINSE TANK INLET	1
7	275 90018	HOSE UD LOWER RINSE FEED	1
8	276 10005	ASSY UD W'TECH RINSE TANK	1
9	8800	MS PAN POZI ZP M4 X 6	2
10	1246	BRACKET SOLENOID SUPPORT	1
11	1247	BRACKET INLET SOLENOID	1
12	400 10014	ASSY ATMOSPHERIC VACUUM BREAK	1
13	275 90013	HOSE UD VACUUM BREAK INLET	1
14	8566	WASHER SPRING SS 304 1/4 inch (M6)	1
15	88461	MS HX SS 304 M6 X 12	1
16	3207	CABLE TIE 338mm TY527MX	4
17	275 90016	HOSE UD RINSE TANK OUTLET	1
18	600 60033	BACKNUT 1/2 BSP PLASTIC	1
19	1894	GASKET-BULKHEAD FITTING	1
20	600 60020	TEE HOSE CONNECTOR 203x6	1

ITEM	CODE	DESCRIPTION	QTY
21	400 20028	VACUUM BREAK COVER	1
22	8567	WASHER SPRING SS 304 M5	1
23	8110	NUT HX SS 304 M5	1
24	400 30046	BRASS STANDOFF	1
25	600 30088	THERMOSTAT TY60/R	1
26	600 80052	M3 x 6 ZP SCREW	1



UNIT 1, 27 ALLGAS STREET, SLACKS CREEK,  
QUEENSLAND 4127, AUSTRALIA  
PH: (07) 3290-2877 FX: (07) 3290-2974

**Wash<sup>®</sup>tech**

9 CORBAN AVENUE, PO Box 21-342  
HENDERSON, AUCKLAND, NEW ZEALAND  
PH: (09) 837-2372 FX: (09) 837-0880

UD00006

ISSUE NO: <b>1</b>	Rev: <b>H</b>	Description: RINSE SYSTEM UD W'TECH
Issue Date: 03-09-98		©Washtech Ltd, October 2015

Scale NTS	Units: mm	Proj: 	Tolerance: REF	Checked by:
Material:				Drawn by: B.A.E
FINISH:				Drawing No: UD00006