

UD

Series 4

UNDERCOUNTER DISHWASHER



Parts Manual

Spare Parts

DESCRIPTION	PART NO
Controls & Indicators	
Power Switch	600 30214
Start Switch	600 30212
Drain Switch	600 30213
Power Light	600 30161
Ready Light	600 30162
Run Light	600 30163
Timer	32822
Relay	600 30080
Relay Base	600 30081
Pressure Switch	130605C
Door Reed Switch	600 30183
Door Switch Magnet	600 30182
Heating Components	
Rinse Tank Assembly	400 10057
Rinse Thermostat	3020
Wash Thermostat	30201
Over Temperature Thermostat	600 30088
Wash Element	600 30226
Rinse Element	3005
Pumps & Solenoids	
Wash Pump	3888
Drain Pump	388344
Solenoid Valve	3342
Hoses	
Wash Pump Inlet Hose	277 90003
Wash Pump Outlet Hose (105 mm long)	6195
Drain Pump Inlet Hose (70 mm long)	6196
Drain Pump Outlet Hose	473345
Upper Wash Hose	277 90002
Lower Wash Hose (40 mm long)	6196
Pressure Switch Hose (specify length)	3067
Rinse Hose (specify length)	600 60073

Spare Parts

DESCRIPTION	PART NO
Wash Tank Components	
Giados Vacuum Breaker	600 90053
Wash Arm	260 10096
Wash Arm Bush	C190624
Wash Arm Jet	400 30088
Wash Arm End Screw Plug	600 80072
Wash Arm Securing Nut	400 30074
Rinse Arm	260 10095
Rinse Arm Bush	C190624
Rinse Arm Jet	400 30087
Rinse Arm End Screw Plug	600 80017
Rinse Spindle	400 30073
Pressure Bell	30664
Wash Pump Inlet Filter	277 20161
Scrap Tray	260 10132

Cabinet & Door

Front Panel Assembly	277 10014
Control panel Assembly	277 10035
Control panel label	400 70048
Rear Wheel	600 90003
Wheel Axle	600 80086
Star Fastener	80002
Door assembly	277 10015
Door Hinge L/H	174 20042
Door Hinge R/H	174 20006
Door Hinge Pin	174 30004
Door Stay Assembly	400 10106
Door Stay Guide Circlip	600 80083
Door Stay Stopper	277 30004
Door Catch Assembly	400 10104

Note:

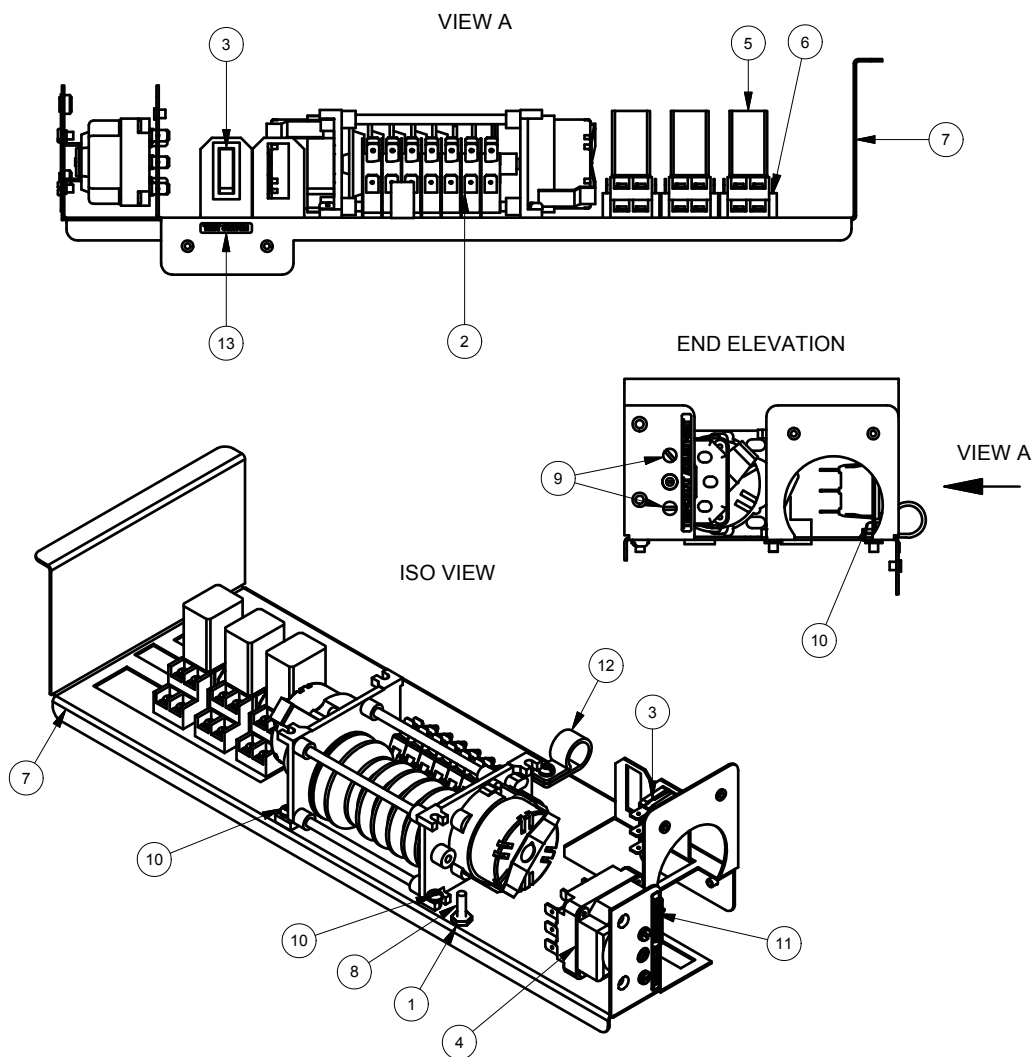
For more parts look in the section “Assembly Diagrams”.

Assembly Diagrams

GLV4\UD4 WASHTECH WIRING TRAY

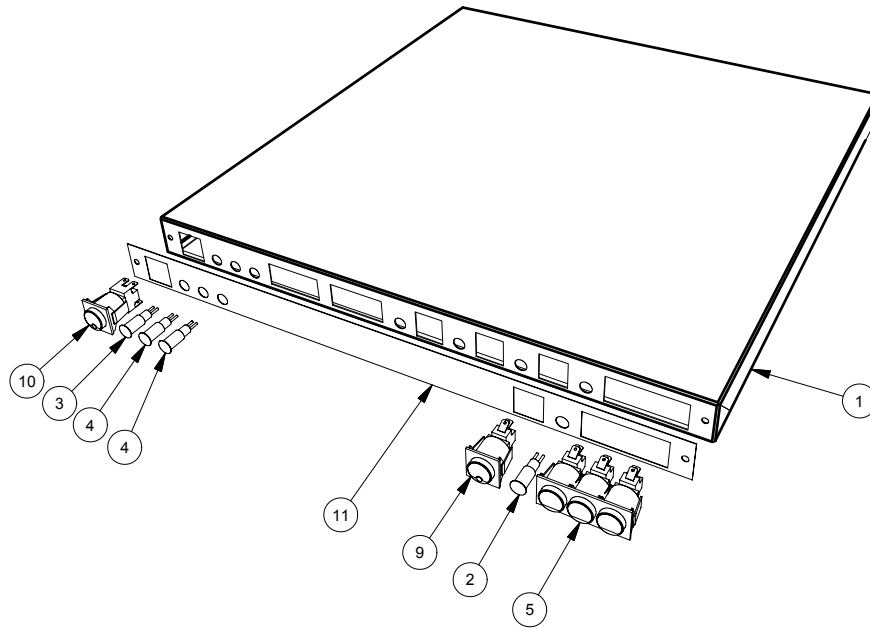
251 10035 15/10/2004 REV 1-B

Parts List			
ITEM	PART NUMBER	DESCRIPTION	QTY
1	8151	NUT HX BRASS 3/16" PRESSED	1
2	32822	TIMER4907DV(180/6 SEC)3 CYCLE	1
3	3035	SWITCH SINGLE POLE BIASED BLACK	1
4	3020	3 POLE THERMOSTAT	1
5	600 30080	RELAY 2 POLE (240VAC)	3
6	600 30081	BASE POLE RELAY	3
7	251 10005	GLV4\UD4 STARLINEWASHTECH WIRING TRAY SUB ASSEMBLY	1
8	8816	MS RH BRASS 3/16 X 3/4	1
9	8800	MS PAN POZI ZP M4x6	2
10	8801	MS PAN POZI ZP M4x12	5
11	REF	LABEL THERMOSTAT ADJUSTMENT	1
12	600 30131	P CLIP 20.8mm	1
13	REF	LABEL TEST SWITCH	1

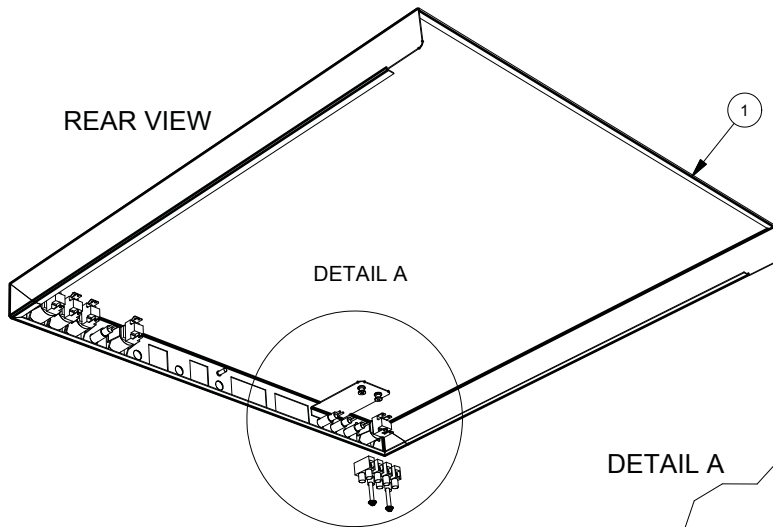


UD4 WASHTECH CONTROL PANEL ASSY

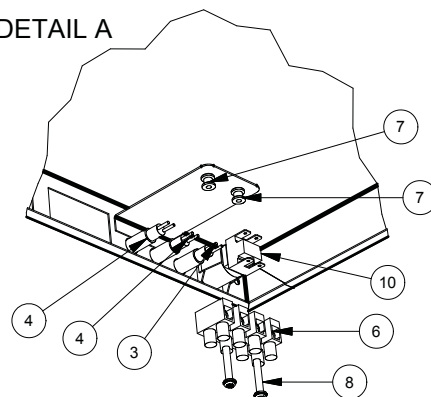
UD4 0004 29/10/2004 REV 1-A



REAR VIEW



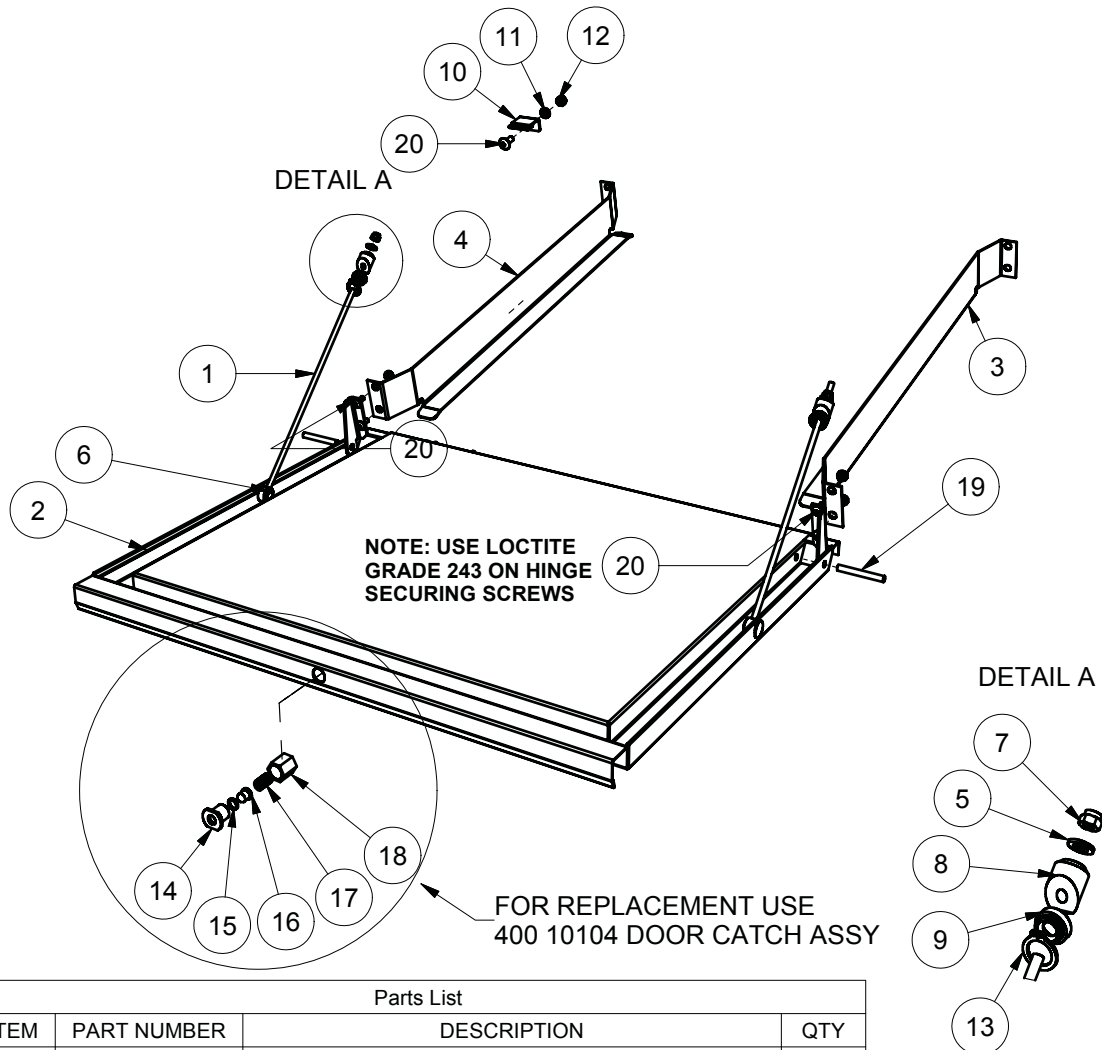
DETAIL A



Parts List			
ITEM	PART NUMBER	DESCRIPTION	QTY
1	277 10035	UD4 CONTROL PANEL SHEET METAL ASSY	1
2	600 30163	LENS & NEON ASSY (GREEN) 12mm	1
3	600 30161	LENS & NEON ASSY (RED) 12mm	1
4	600 30162	LENS & NEON ASSY (AMBER) 12mm	2
5	600 30212	3 BANK 1 POLE MOMENTARY SWITCH	1
6	32271	TERMINAL STRIP 4 WAY	1
7	600 80003	M4 NUTSERT	2
8	8802	MS PAN POZI ZP M4x25	2
9	600 30215	SWITCH CIRINSE 1P NO	1
10	600 30214	SWITCH POWER 2P NO/NO LATCHED	1
11	400 70048	WASHTECH UD CONTROL PANEL LABEL	1

UD DOOR, RACK AND STAY ASSY

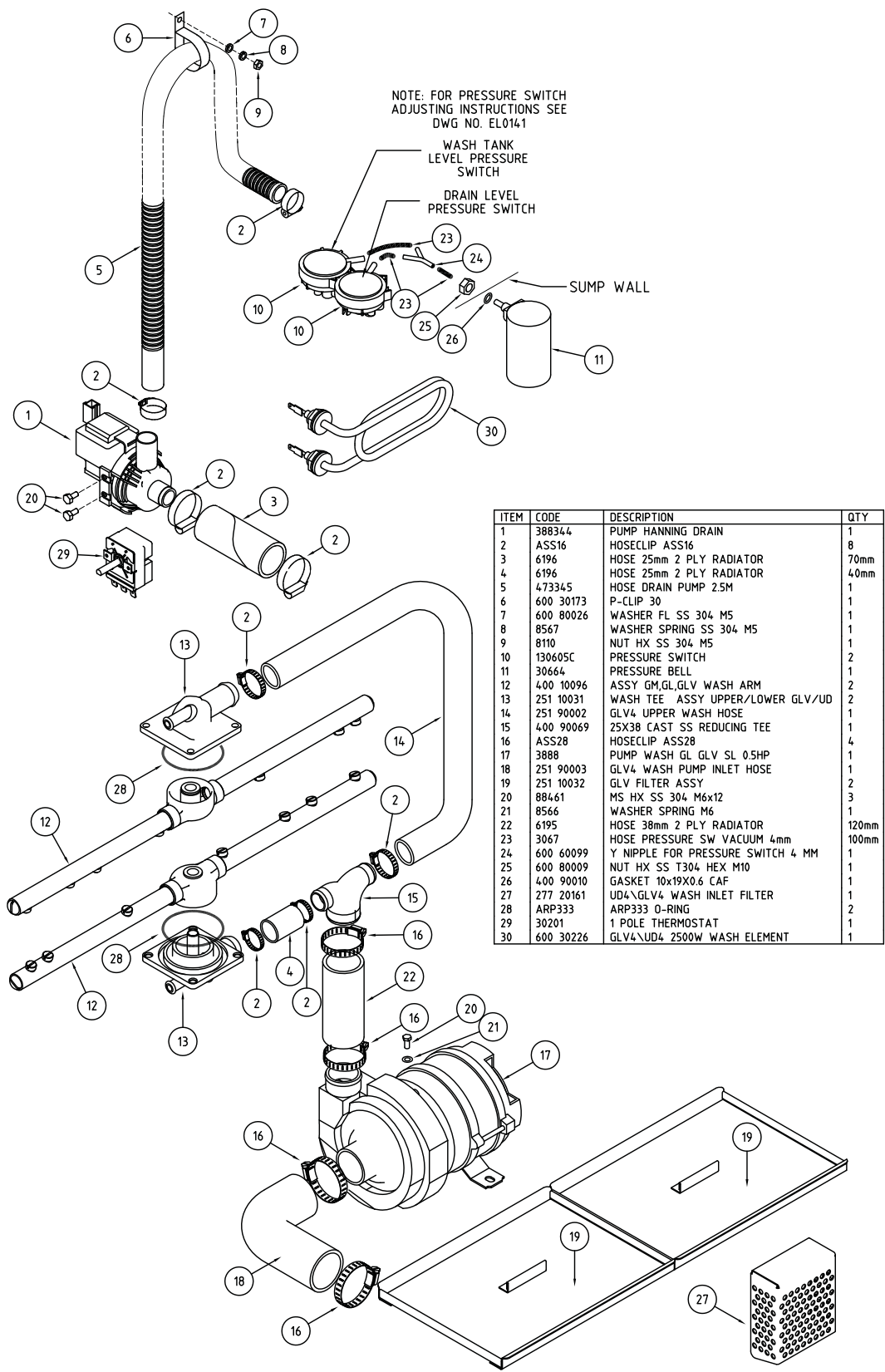
277 10013 8/11/2004 REV 1-D



Parts List			
ITEM	PART NUMBER	DESCRIPTION	QTY
1	400 10106	DOOR STRUT ROD ASSY	2
2	277 10015	UD DOOR ASSY	1
3	277 10096	UD RACK ASSY (RH)	1
4	277 10095	UD RACK ASSY (LH)	1
5	85651	M5 S/S PLAIN WASHER	2
6	600 80082	8mm SS EXTERNAL CIRCLIP	2
7	600 80060	NUT NYLOC M5 S/S	2
8	277 30004	REAR DOOR GUSSET SPACER UE\UD\GLV	2
9	260 30003	DOOR GUIDE BUSH	2
10	277 20072	GLV4\UD DOOR LATCH	1
11	8567	WASHER SPRING SS 304 M5	1
12	8110	M5 SS HEX NUT	1
13	600 80083	13mm SS EXTERNAL CIRCLIP	2
14	400 30030	DOOR CATCH FACE BOLT	1
15	400 30033	DOOR CATCH SPACER FOR PLUNGER	1
16	400 30032	DOOR CATCH PLUNGER	1
17	400 90024	DOOR CATCH COIL SPRING S/S	1
18	400 30031	DOOR CATCH CAP NUT	1
19	174 30004	GM DOOR PIN	2
20	600 80017	M5 x 12 SS TRUSS HEAD SCREW	5

GLV4 WASH ASSY

GLV4 0004 04-10-04 1B



Wash Pump

Part Number

3888

Function

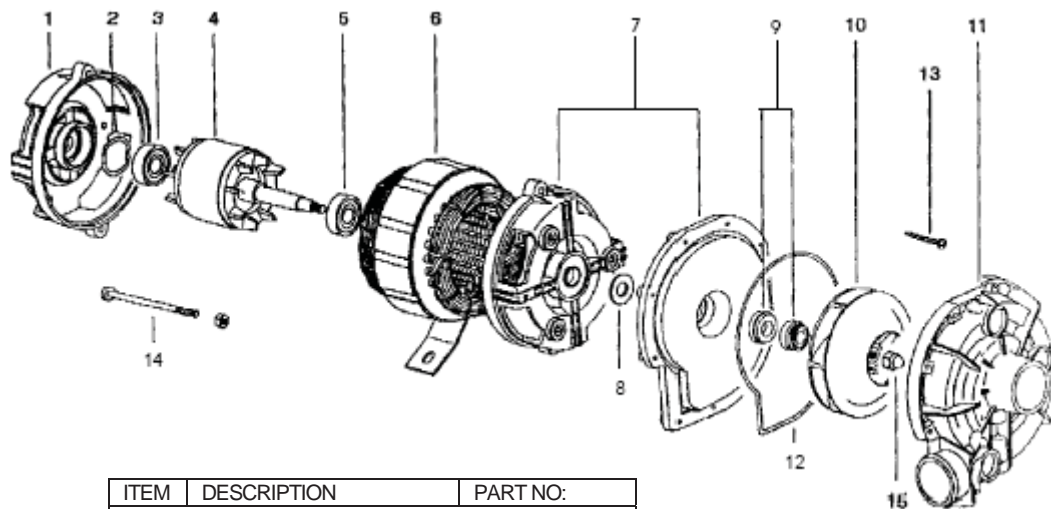
Pumps water from the wash tank to the wash arms providing a recirculating wash cycle.

Description

Electric Pump FIR 3983

Power:	HP 0.5 Kw 0.37	Speed:	2800 rpm
Voltage:	220 V	Amperes:	2.6 A
Frequency:	50 Hz	Capacitor:	12.5 uF/400 V

Diagram



ITEM	DESCRIPTION	PART NO:
1	Housing	
2	Compensation Ring	
3	Ball Bearing	6201
4	Rotor	
5	Ball Bearing	6201
6	Stator	
7	Pump Support	38885
8	Water Protect.Ring	
9	Seal	C630510
10	Impeller	38882
11	Volute	38884
12	Gasket	38886
13	Pump Housing Screw	
14	Tie Rod	
15	Impeller Nut	

Replacement

Drain the wash tank and switch off the power.

Disconnect the wires from the pump connectors and the pump capacitor.

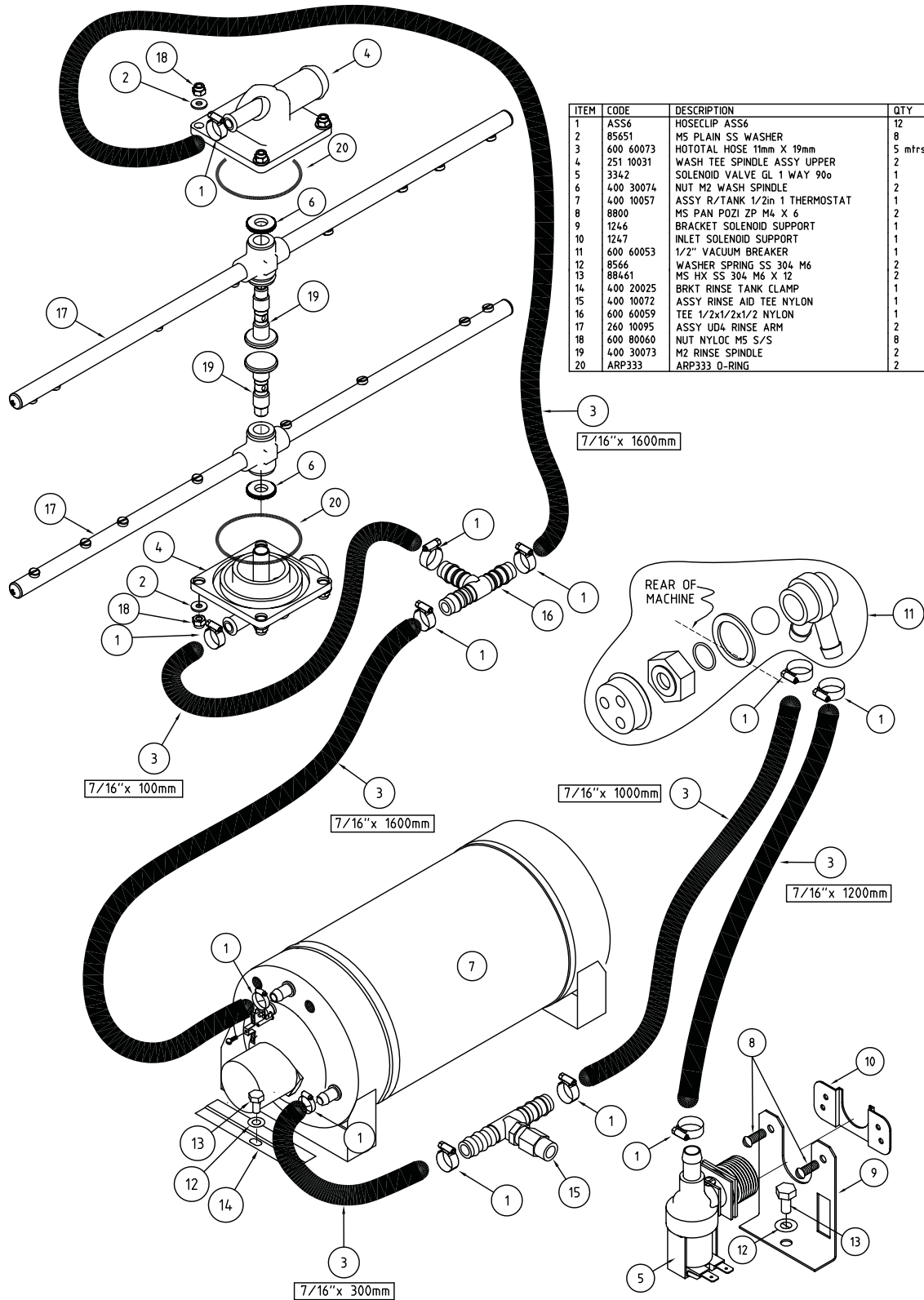
Remove M6 bolt that fastens the pump to the floor of the machine.

Release the hose clamps on the inlet and outlet pump hoses and remove the pump.

Replace in reverse order.

WASHTECH UD4 RINSE ASSY

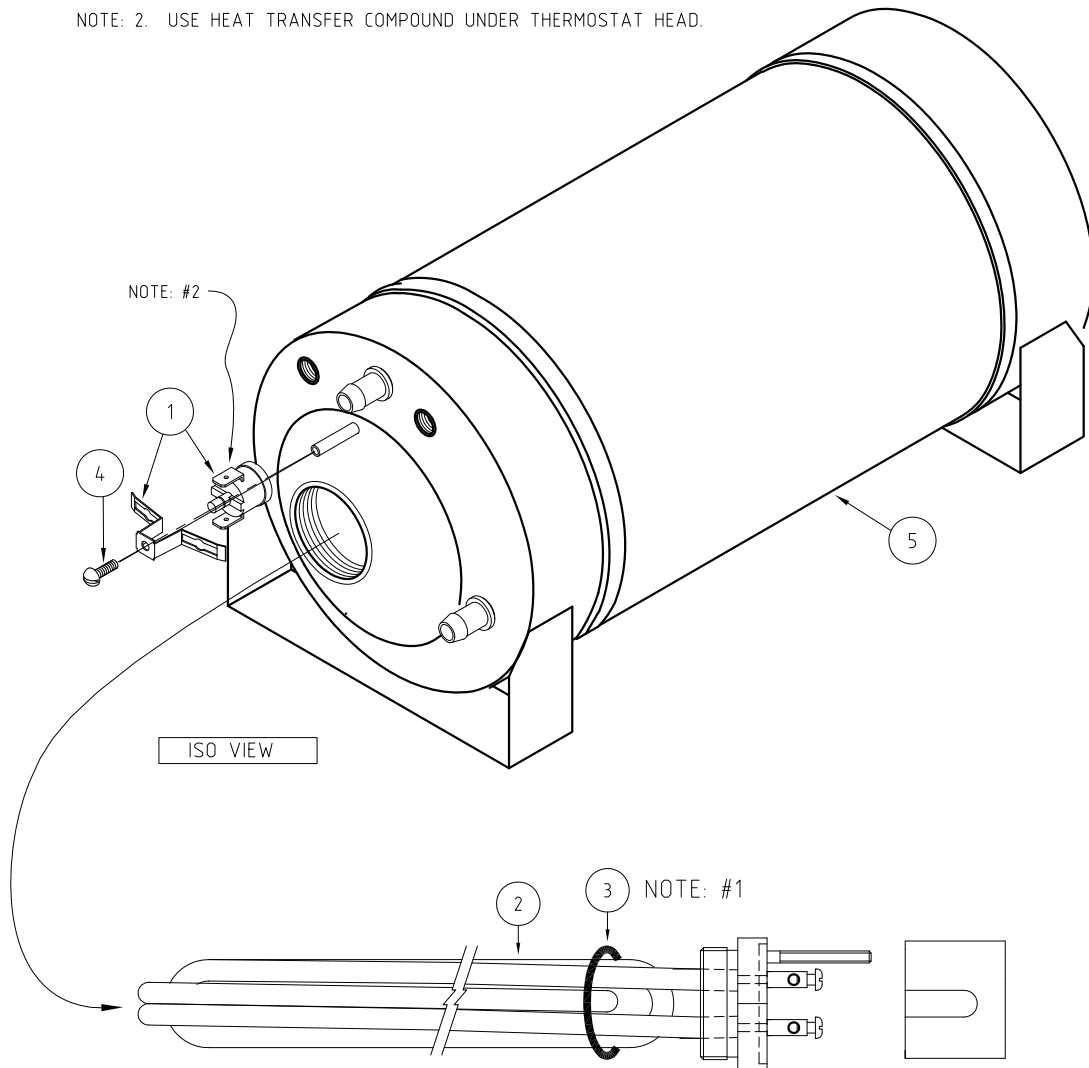
UD4 0003 28-10-04 1A



ASSY R/TANK 1/2" 1 THERMOSTAT

400 10057 23-07-01 1B

NOTE: 2. USE HEAT TRANSFER COMPOUND UNDER THERMOSTAT HEAD.

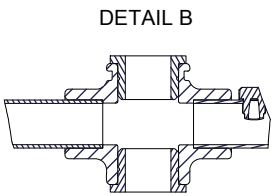
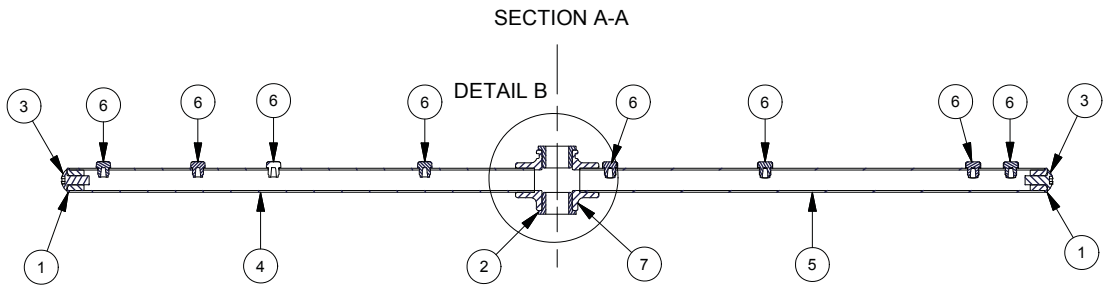


ITEM	CODE	DESCRIPTION	QTY
1	600 30088	THERMOSTAT TY60/R-95C [with E bracket]	1
2	3005	ELEMENT 5kw RINSE	1
3	3006	GASKET ELEMENT 54.0:1.6mm	1
4	600 80052	MS PAN SLOT ZP M3X6.	1
5	400 10042	RINSE TANK NEW SUB ASSY 1/2"	1

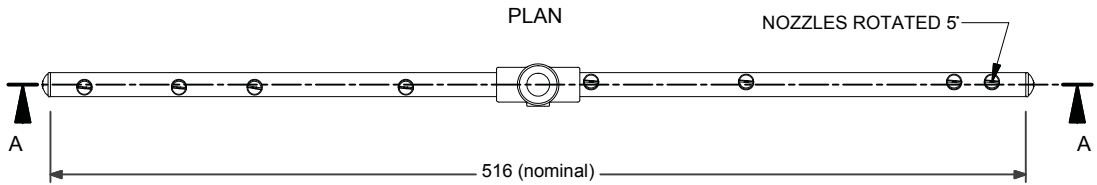
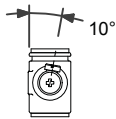
NOTE: 1. USE GRAPHITE JOINING COMPOUND ON BOTH SIDES OF GASKET BEFORE INSERTING ONTO ELEMENT.

ASSY UD RINSE ARM

260 10095 28/10/2004 REV 1-D



END ELEVATION

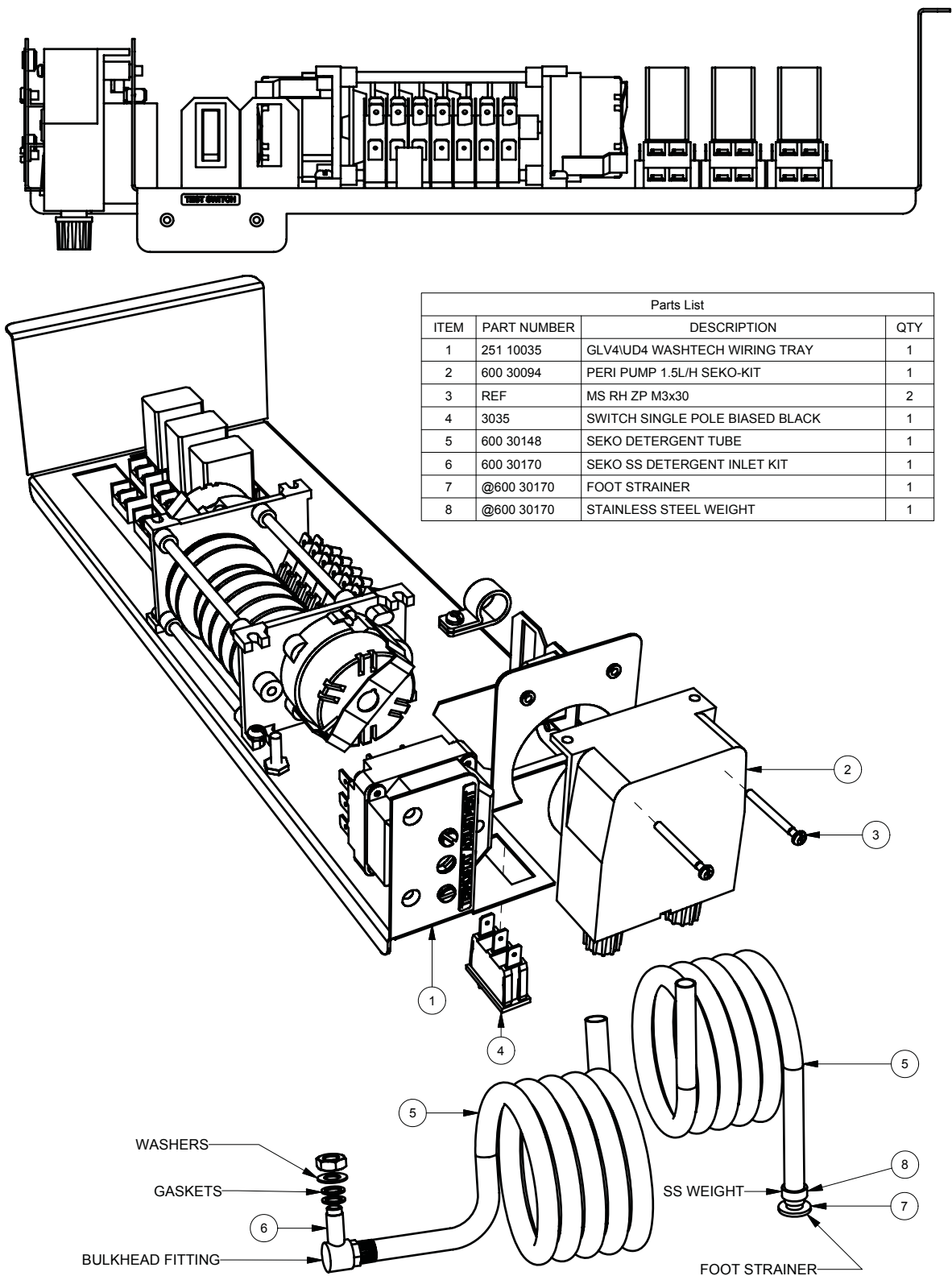


Parts List			
ITEM	PART NUM	DESCRIPTION	QTY
1	400 30010	PLUG G TYPE RINSE ARM END PLUG	2
2	C190624	WASH/RINSE ARM BUSH	2
3	600 80017	M5 x 12 SS TRUSS HEAD SCREW	2
4	260 30180	UD4 TYPE B RINSE ARM	1
5	260 30181	UD4 TYPE A RINSE ARM	1
6	400 30087	G4 MACHINED RINSE JET	8
7	400 90067	HUB G TYPE RINSE ARM HUB CASTING	1

Appendices

GLV4/UD4 RETROFIT DETERGENT PUMP ASSY

400 90026 12/11/2004 REV 1-A

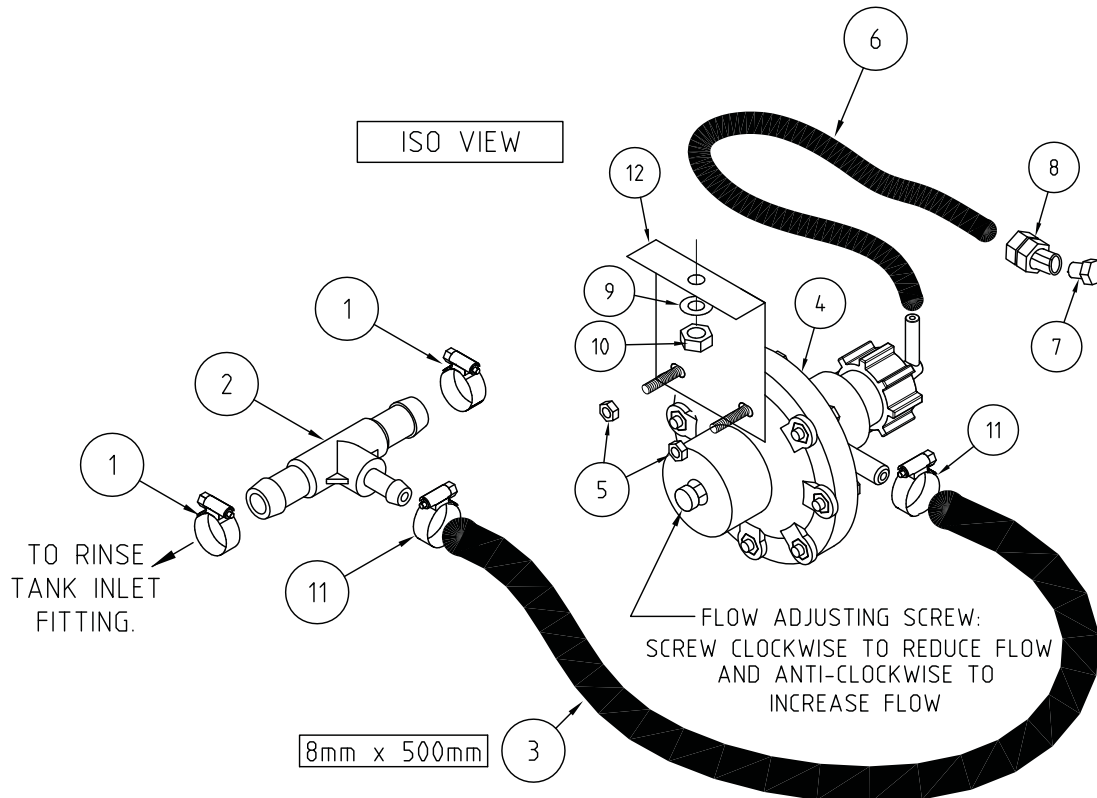


RINSE AID INJECTOR RETROFIT

400 90141 19-10-06 1A

INSTALLATION

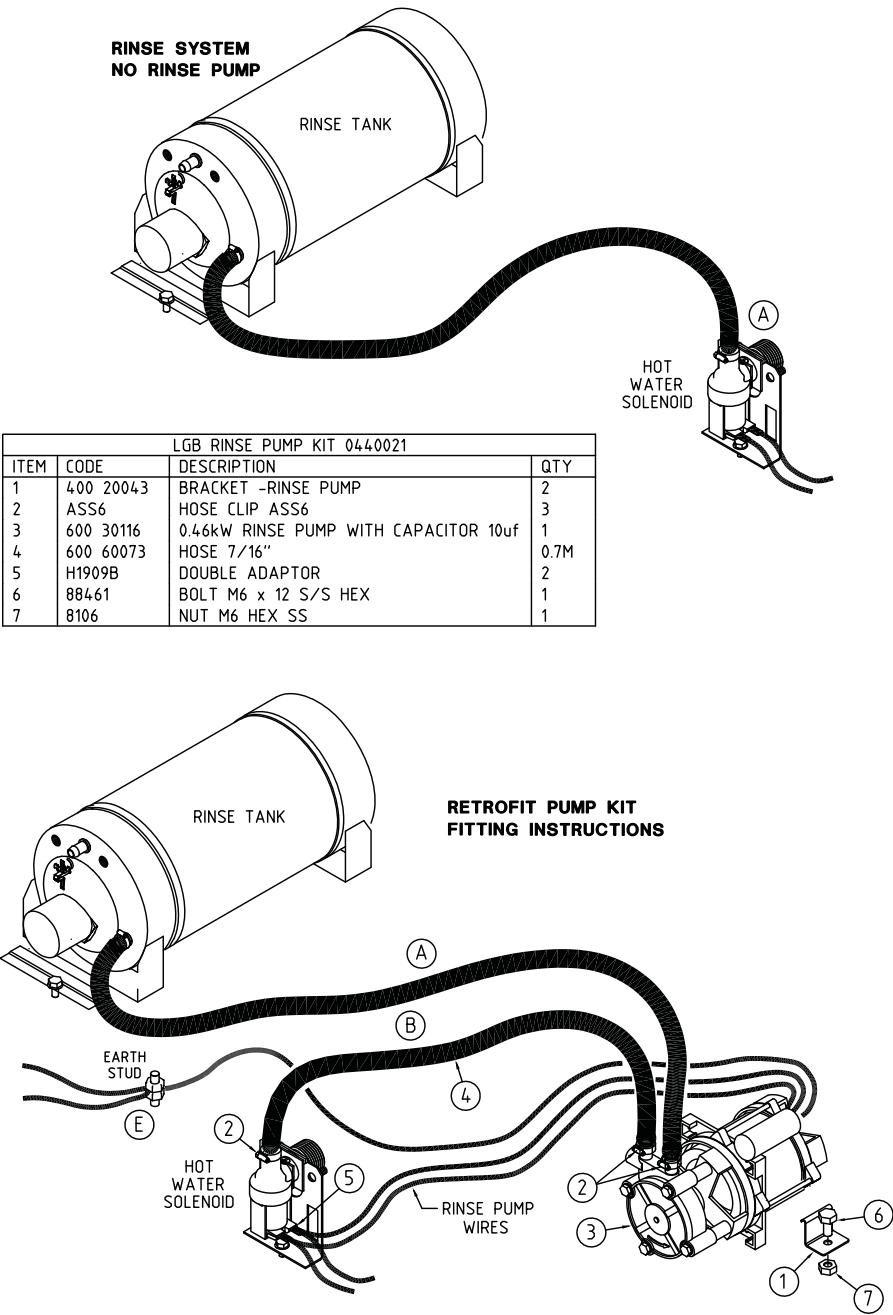
1. MOUNT BRACKET/PUMP INSIDE FRONT OF BASE OF MACHINE
2. REPLACE BLUE TEE FITTED ON RINSE TANK INLET HOSE WITH GREY TEE ②. (ALTERNATIVELY CUT RINSE TANK INLET HOSE AT AN APPROPRIATE POINT AND INSERT PLASTIC TEE ② BETWEEN HOSE ENDS)
3. ASSEMBLE ALL OTHER COMPONENTS AS SHOWN BELOW AND INSERT HOSE ⑥ INTO CHEMICAL CONTAINER.
4. SETUP IS NOW COMPLETED AND WILL REQUIRE ADJUSTMENT VIA FLOW ADJ. SCREW. THE VOLUME OF RINSE FLUID WILL VARY FOR DIFFERENT PRODUCT, BUT TYPICALLY 5 MLS PER CYCLE IS REQUIRED.



HYDRAULIC RINSE AID INJECTOR KIT 0440012			
ITEM	CODE	DESCRIPTION	QTY
1	ASS06	HOSECLIP ASS06	2
2	C180408	T-NIPPLE F.INJECT.W/CEN REDUC.	1
3	600 60101	HOSE 8mm	0.5
4	C620120	RINSE AID INJECTOR	1
5	8152	NUT HX ZP M4	2
6	D24-10	TUBING D260 .25 OD 8FT	1
7	D24-11SP	FOOT STRAINER	1
8	600 80009	M10 SS HEX NUT	2
9	8566	WASHER SPRING SS 304 M6	1
10	8106	NUT Hx SS M6	1
11	ASS04	HOSECLIP ASS04	2
12	275 20048	RINSE AID INJECTOR MOUNTING BRACKET	1

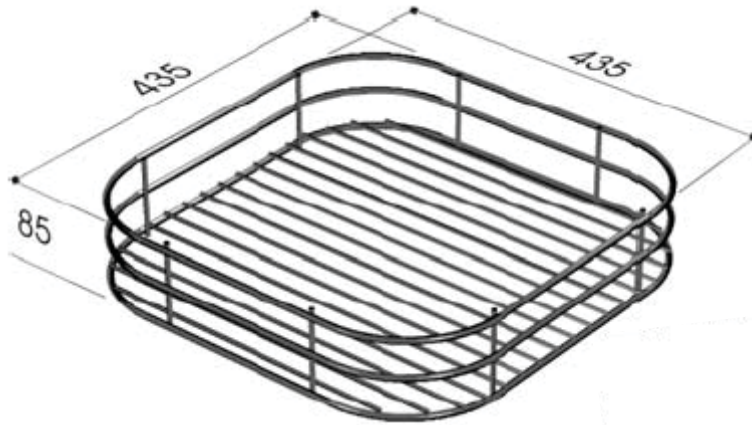
RINSE PUMP RETROFIT

400 90142 19-10-06 1A

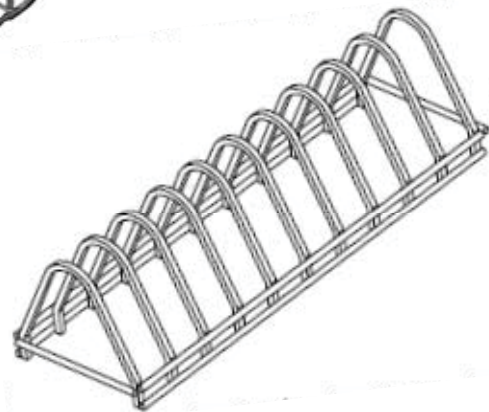


1. Install rinse pump using the bracket and bolt provided
 2. Remove hose A from solenoid and reconnect to rinse pump outlet using hose clamp provided
 3. Connect hose B supplied in kit from pump inlet to solenoid using hose clamp provided
 4. Earth pump on chasis earth stud with green wire provided in wiring loom
 5. Connect pump wiring to solenoid connections using double adaptors provided.
- xxxxxx IMPORTANT hoses must be connected as shown. xxxxxxxx

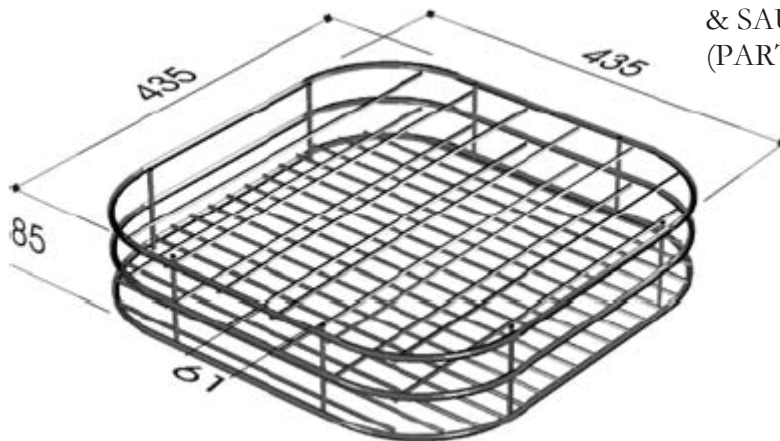
Accessories



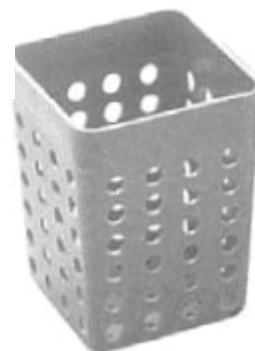
CUP/GLASS WIRE RACK
(PART NO: 0404)



INSERTS FOR PLATES
& SAUCERS
(PART NO: 040601)



DISHRACK WIRE RACK 7 DIVISIONS
(PART NO: 0406)



CUTLERY CONTAINER
(PART NO: C660503)

Information supplied in this manual is copyright. No part of this work may be reproduced or copied in any form or by any means, electronic or mechanical without the express permission of the author / publisher.



Distributed In
Australia by

MOFFAT®

740 Springvale Road, Mulgrave 3170, Victoria, Tel 03 9518 3888 Fax 03 9518 3818

Service 1 800 622 216
Parts 1 800 337 963

