

UD

Series 5

UNDERCOUNTER DISHWASHER



Parts Manual

Spare Parts

| DESCRIPTION | PART NO |
|-------------------------------|-----------|
| Cabinet & Door | |
| Control Panel Sub-Assembly | 278 10042 |
| Control Panel Label | 400 70050 |
| Door Assembly | 278 10015 |
| Door Catch Assembly | 400 10104 |
| Door Hinge Locknut | 255 30002 |
| Door Hinge Pin | 255 30001 |
| Door Latch | 255 20058 |
| Door Seal Gasket (600mm long) | 600 90064 |
| Door Seal Support | 278 20009 |
| Door Switch Magnet | 600 30182 |
| Front Panel Assembly | 278 20016 |
| Rear Wheel | 600 90003 |
| Spine Cover Panel | 278 20020 |
| Star Fastener | 80002 |

Controls & Indicators

| | |
|-------------------------|-----------|
| Cord Set 15A | 600 30255 |
| Cord Set 10A | 600 30171 |
| Door Reed Switch | 600 30183 |
| Drain Switch | 600 30213 |
| Power Light | 600 30161 |
| Power Switch | 600 30214 |
| Pressure Switch 50/25mm | 600 30266 |
| Ready Light | 600 30162 |
| Relay | 600 30080 |
| Relay Base | 600 30081 |
| Run Light | 600 30163 |
| Start Switch | 600 30212 |
| Test Switch | 3035 |
| Timer | 32822 |

Heating Components

| | |
|-----------------------------|-----------|
| Over Temperature Thermostat | 600 30088 |
| Rinse Element 3 KW | 600 30249 |
| Rinse Element 1.5 KW x 2 | 600 30169 |
| Rinse Tank Assembly | 400 10129 |
| Rinse Thermostat | 3020 |
| Wash Element 2.5 KW | 600 30159 |
| Wash Element 1.5 KW | 600 30172 |
| Wash Thermostat | 30201 |

Spare Parts

| DESCRIPTION | PART NO |
|---------------------------------------|-----------|
| Hoses | |
| Drain Pump Inlet Hose (UHB 25) | 600 90074 |
| Drain Pump Outlet Hose | 600 60105 |
| Lower Wash Hose (70 mm long) | 6196 |
| Pressure Switch Hose (specify length) | 3067 |
| Rinse Hose (specify length) | 600 60073 |
| Upper Wash Hose | 400 90012 |
| Wash Pump Inlet Hose | 251 90003 |
| Wash Pump Outlet Hose (90 mm long) | 6195 |
| Pumps & Solenoids | |
| Drain Pump 50 HZ | 600 60102 |
| Drain Pump 60 HZ | 600 60107 |
| Solenoid Valve | 3342 |
| Wash Pump 50 HZ | 3888 |
| Wash Pump 60 HZ | 38881 |
| Wash Tank Components | |
| Pressure Bell | 400 90135 |
| Rinse Arm | 260 10095 |
| Rinse Arm Bush | C190624 |
| Rinse Arm End Screw Plug | 600 80017 |
| Rinse Arm Jet | 400 30087 |
| Rinse Spindle | 400 30073 |
| Scrap Tray | 278 10003 |
| Slip Ring Black Acetal | 400 30190 |
| Wash Arm | 260 10096 |
| Wash Arm Bush | C190624 |
| Wash Arm End Screw Plug | 600 80072 |
| Wash Pump Inlet Filter | 278 20100 |
| Wash Arm Jet | 400 30088 |
| Wash Arm Securing Nut | 400 30074 |

Note:

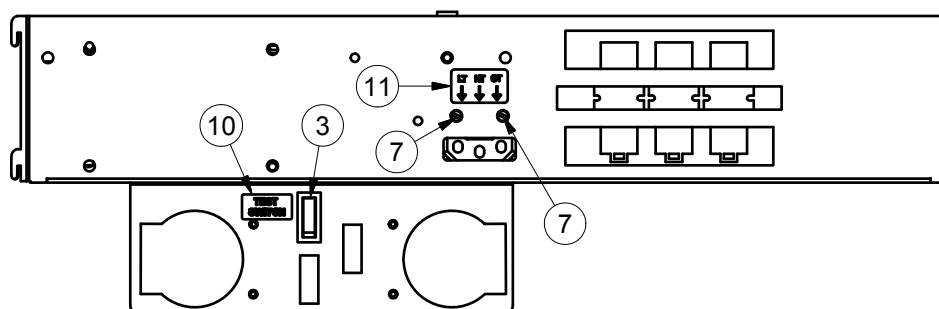
For more parts look in the section “Assembly Diagrams”.

Assembly Diagrams

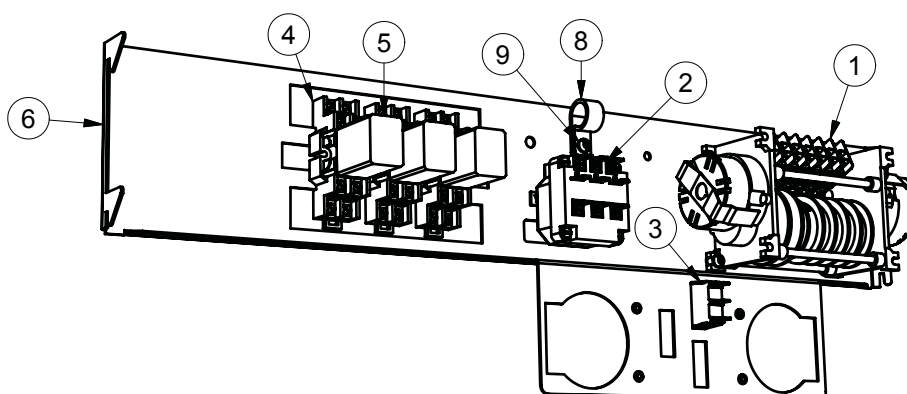
UD5 WIRING TRAY ASSEMBLY WASHTECH

278 10020 14/06/2007 REV 3-A

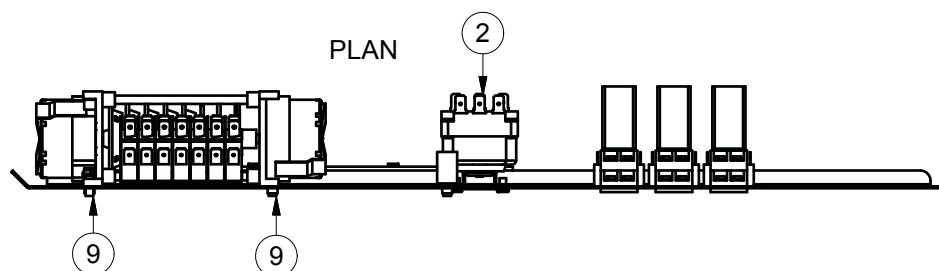
MAIN ELEVATION



PERSPECTIVE VIEW



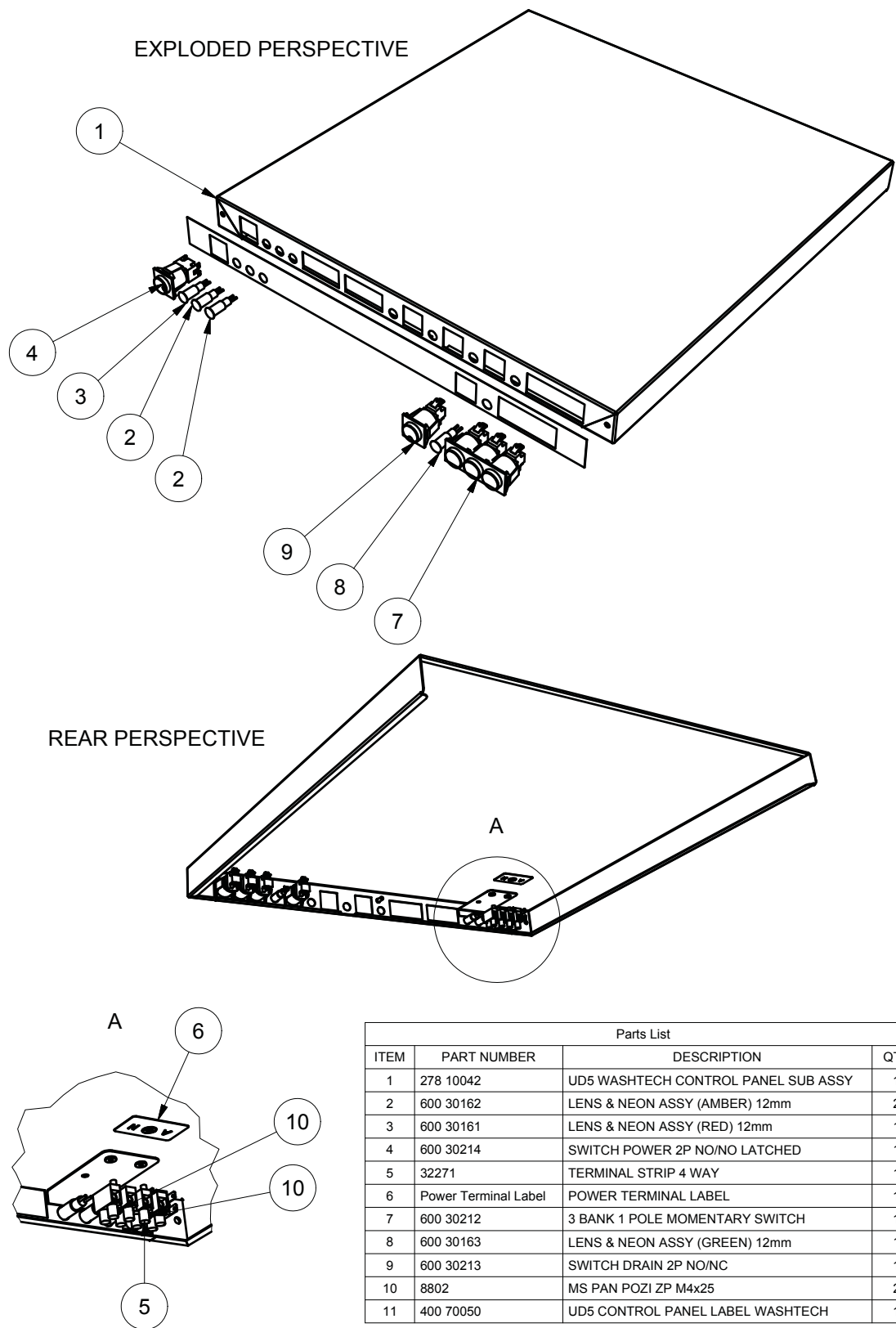
PLAN



| Parts List | | | |
|------------|-------------|---------------------------------------|-----|
| ITEM | PART NUMBER | DESCRIPTION | QTY |
| 1 | 32822 | TIMER4907DV(180/6 SEC)3 CYCLE | 1 |
| 2 | 3020 | 3 POLE THERMOSTAT | 1 |
| 3 | 3035 | SWITCH SINGLE POLE BIASED BLACK | 1 |
| 4 | 600 30081 | BASE 2 POLE RELAY | 3 |
| 5 | 600 30080 | RELAY 2 POLE (240VAC) | 3 |
| 6 | 278 10005 | UD5 WIRING TRAY SUB ASSEMBLY WASHTECH | 1 |
| 7 | 8800 | MS PAN POZI ZP M4x6 | 2 |
| 8 | 600 30131 | P CLIP 20.8mm | 1 |
| 9 | 8801 | MS PAN POZI ZP M4x12 | 3 |
| 10 | REF | LABEL TEST SWITCH | 1 |
| 11 | REF | Label THERMSTAT ADJUSTMENT | 1 |

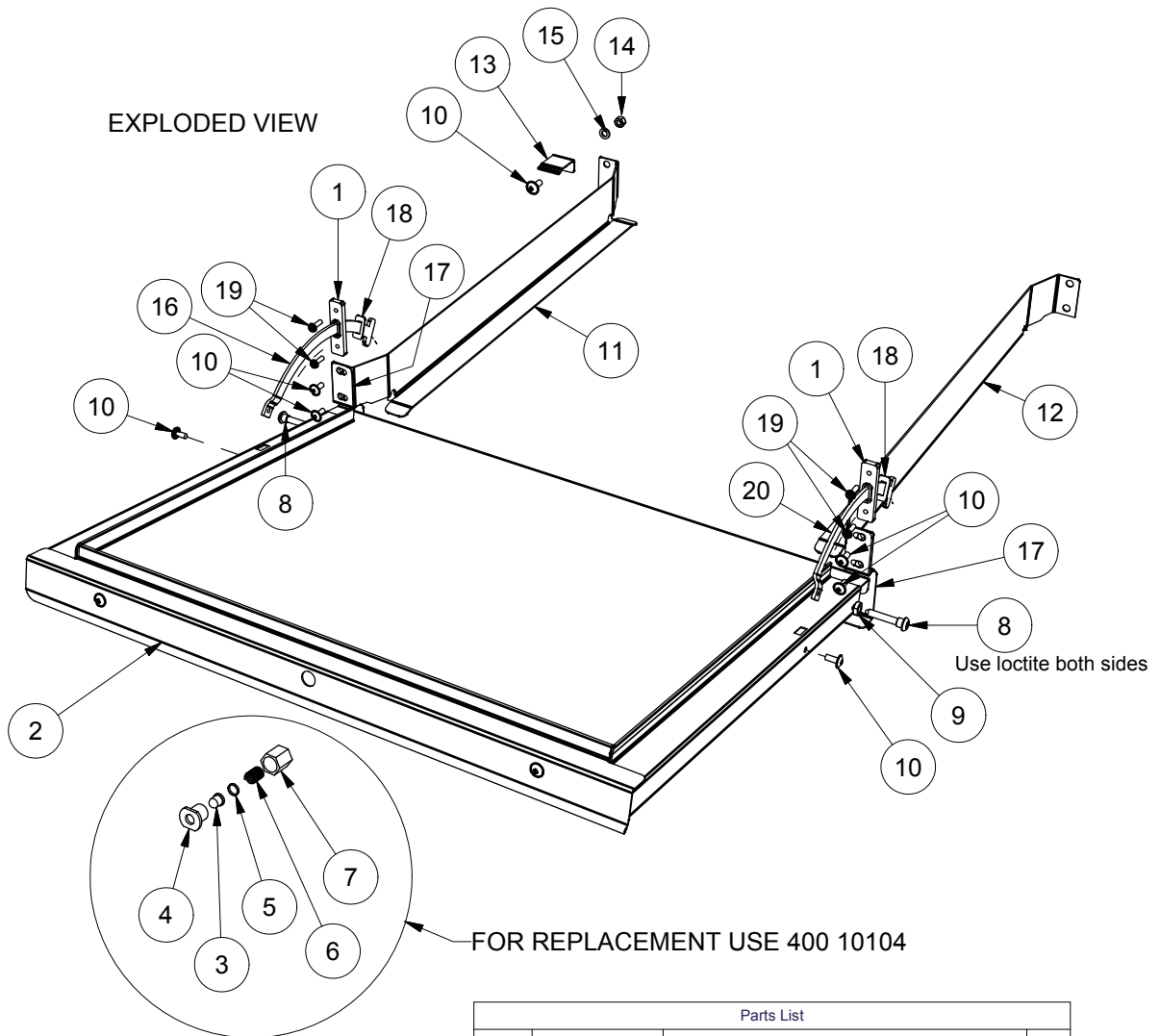
UD5 WASHTECH CONTROL PANEL ASSY

278 10043 10/05/2005 REV 3-B



UD5 DOOR ASSEMBLY

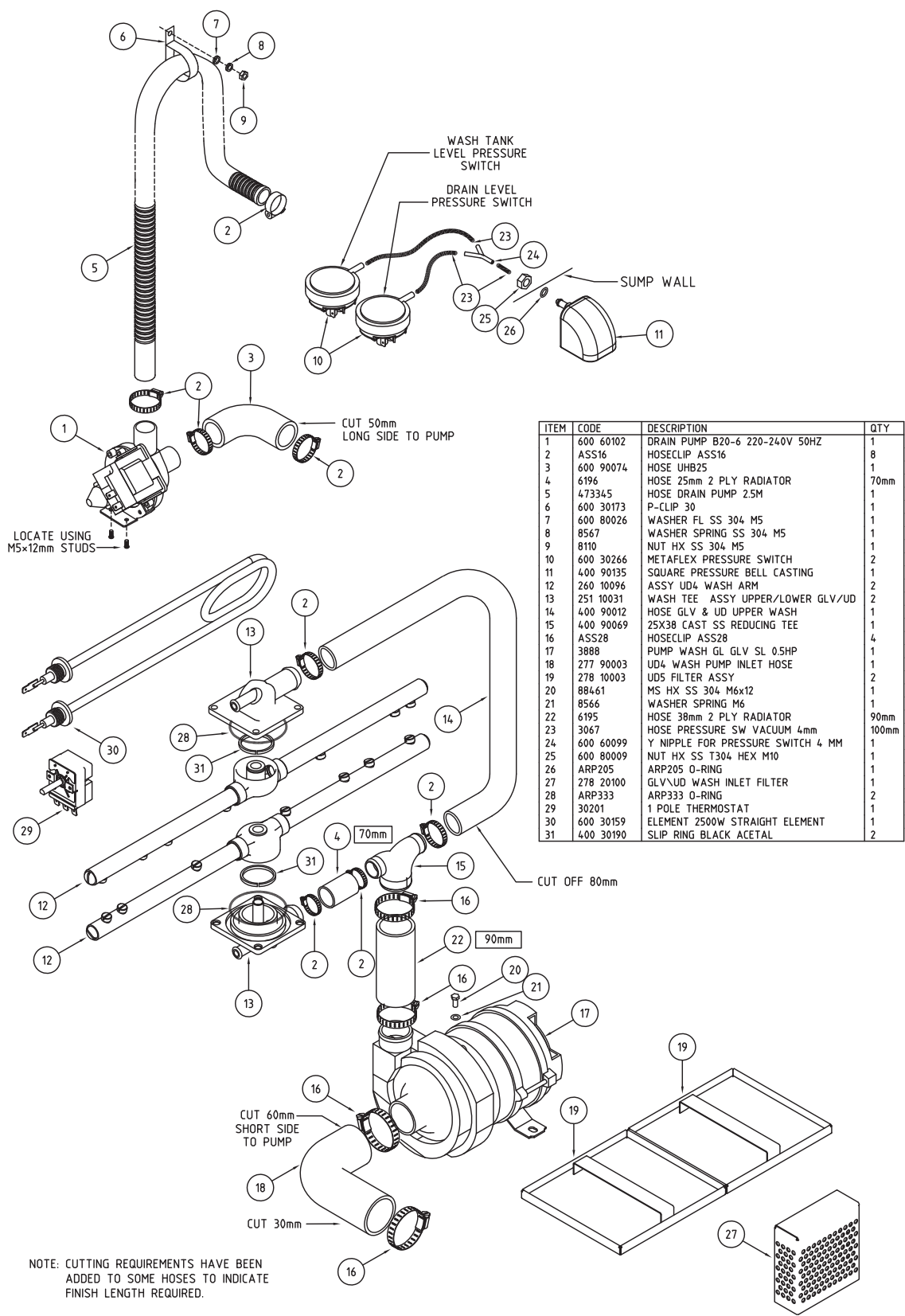
278 10001 7/12/2005 REV 3-C



| Parts List | | | |
|------------|-------------|-----------------------------------|----|
| ITEM | PART NUMBER | DESCRIPTION | QT |
| 1 | 400 90113 | HINGE GUIDE | 2 |
| 2 | 278 10015 | UD5 DOOR ASSEMBLY | 1 |
| 3 | 40030032 | DOOR CATCH PLUNGER | 1 |
| 4 | 400 30030 | DOOR CATCH FACE BOLT | 1 |
| 5 | 400 30033 | DOOR CATCH SPACER FOR PLUNGER | 1 |
| 6 | 400 90024 | DOOR CATCH COIL SPRING S/S | 1 |
| 7 | 400 30031 | DOOR CATCH CAP NUT | 1 |
| 8 | 255 30001 | GLV DOOR HINGE PIN | 2 |
| 9 | 255 30002 | GLV HINGE LOCKNUT | 2 |
| 10 | 600 80017 | M5 x 12 SS TRUSS HEAD SCREW | 7 |
| 11 | 278 10045 | UD5 RACK SLIDE ASSY (LH) | 1 |
| 12 | 278 10046 | UD5 RACK SLIDE ASSY (RH) | 1 |
| 13 | 255 20058 | GLV5 DOOR LATCH | 1 |
| 14 | 8110 | M5 SS HEX NUT | 1 |
| 15 | 8567 | WASHER SPRING SS 304 M5 | 1 |
| 16 | 278 20065 | UD5\GLV5\GL5 DOOR STAY LH | 1 |
| 17 | 255 20116 | GLV5 SPLASH BAFFLE | 2 |
| 18 | 278 20066 | GLV5\UD5\GL5 DOOR STOP BRKT | 2 |
| 19 | 600 80059 | PAN HEAD POZI DRIVE SCREW 6g x 12 | 4 |
| 20 | 278 20067 | GLV5\UD5\GL5 DOOR STAY RH | 1 |

UD5 WASH ASSY

UD5 0004 14-01-08 1 E



Wash Pump

Part Number

3888

Function

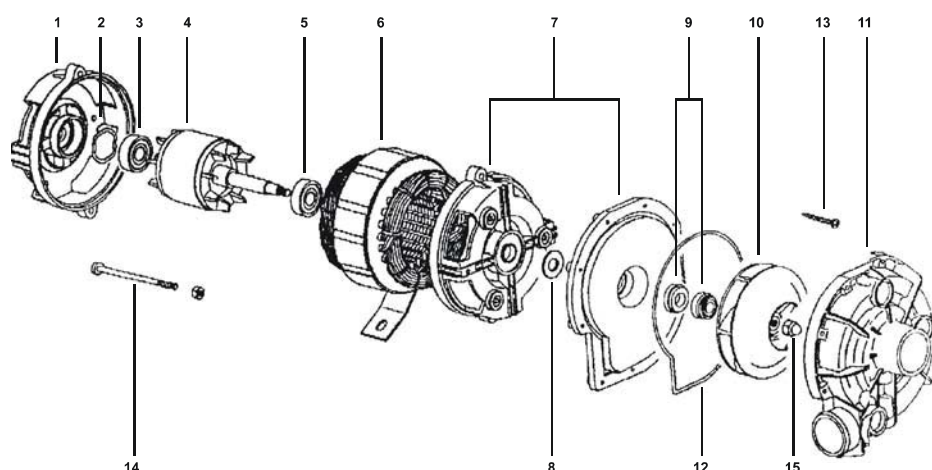
Pumps water from the wash tank to the wash arms providing a recirculating wash cycle.

Description

Electric Pump FIR

| | | | |
|------------|----------------|------------|---------------|
| Power: | HP 0.5 Kw 0.37 | Speed: | 2800 rpm |
| Voltage: | 220 V | Amperes: | 2.6 A |
| Frequency: | 50 Hz | Capacitor: | 12.5 uF/400 V |

Diagram



| ITEM | DESCRIPTION | PART NO: | ITEM | DESCRIPTION | PART NO: |
|------|--------------------|----------|------|--------------------|----------|
| 1 | Housing | | 9 | Seal | C630510 |
| 2 | Compensation Ring | | 10 | Impeller | 38882 |
| 3 | Ball Bearing | 6201 | 11 | Volute | 38884 |
| 4 | Rotor | | 12 | Gasket | 38886 |
| 5 | Ball Bearing | 6201 | 13 | Pump Housing Screw | |
| 6 | Stator | | 14 | Tie Rod | |
| 7 | Pump Support | 38885 | 15 | Impeller Nut | |
| 8 | Water Protect.Ring | | | | |

Replacement

Drain the wash tank and switch off the power.

Disconnect the wires from the pump connectors and the pump capacitor.

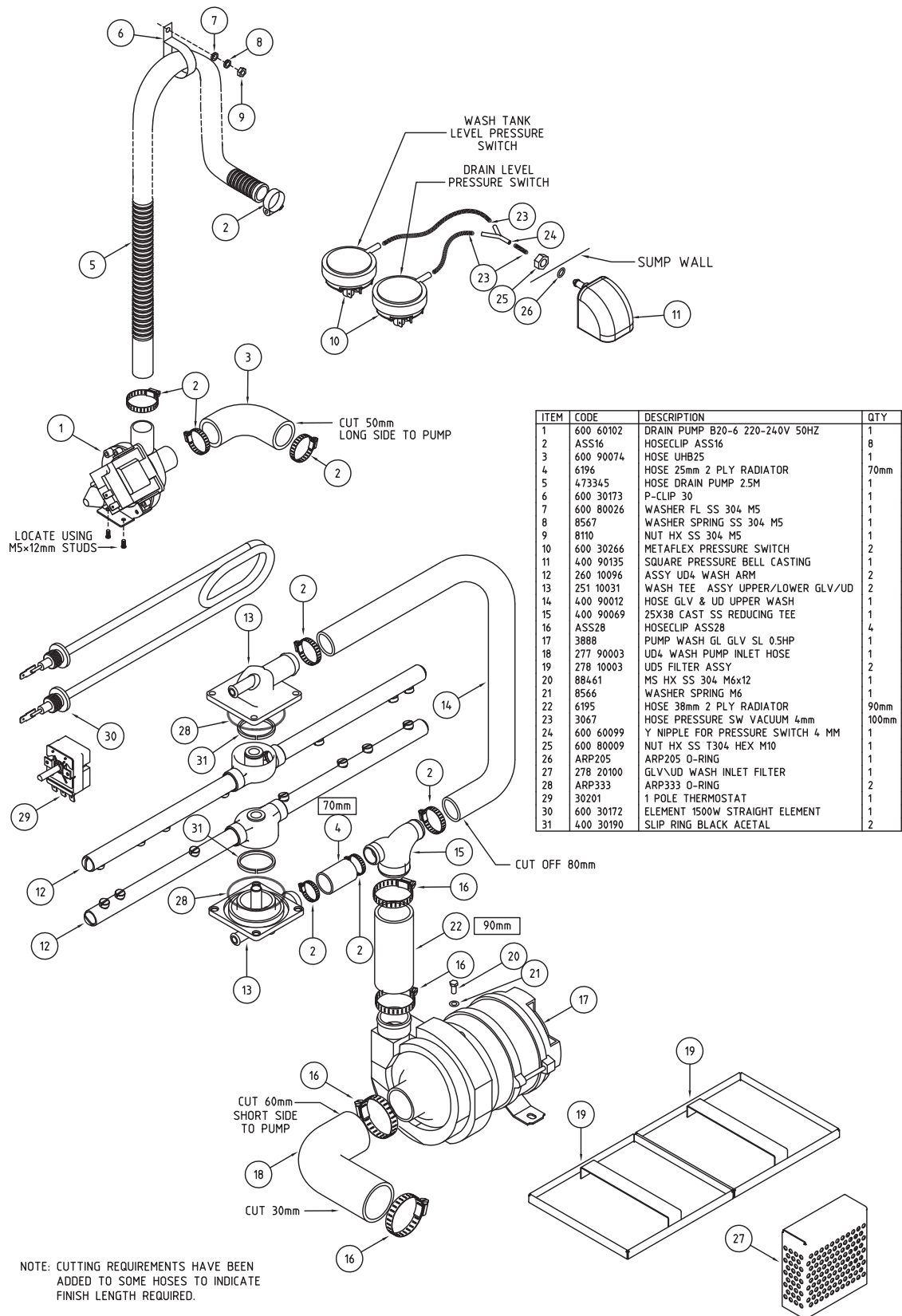
Remove M6 bolt that fastens the pump to the floor of the machine.

Release the hose clamps on the inlet and outlet pump hoses and remove the pump.

Replace in reverse order.

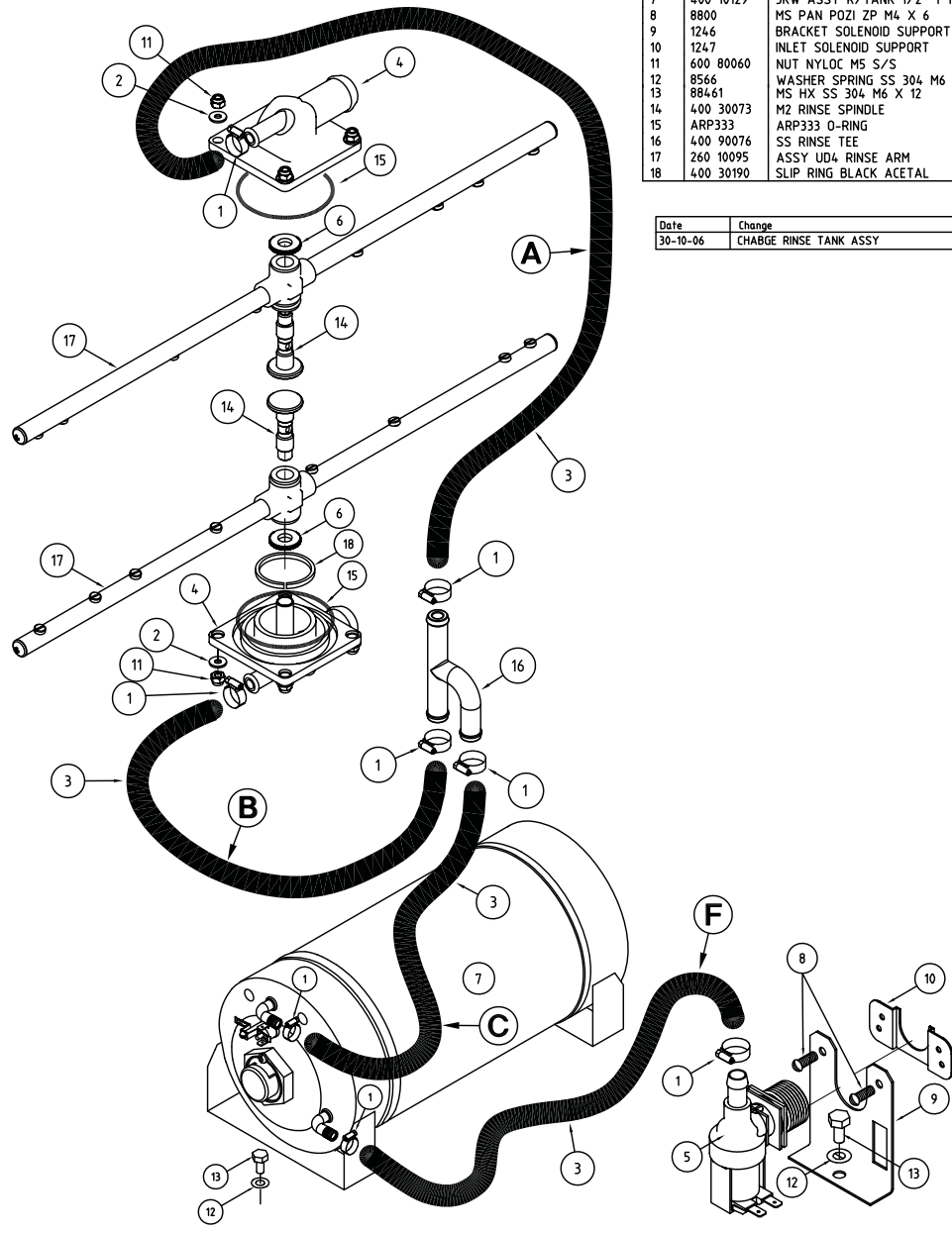
UD5 10A WASH ASSY

UD5 0010 21-01-08 3 E



WASHTECH UD5 RINSE ASSY.

UD5 0005 30-10-06 3 C

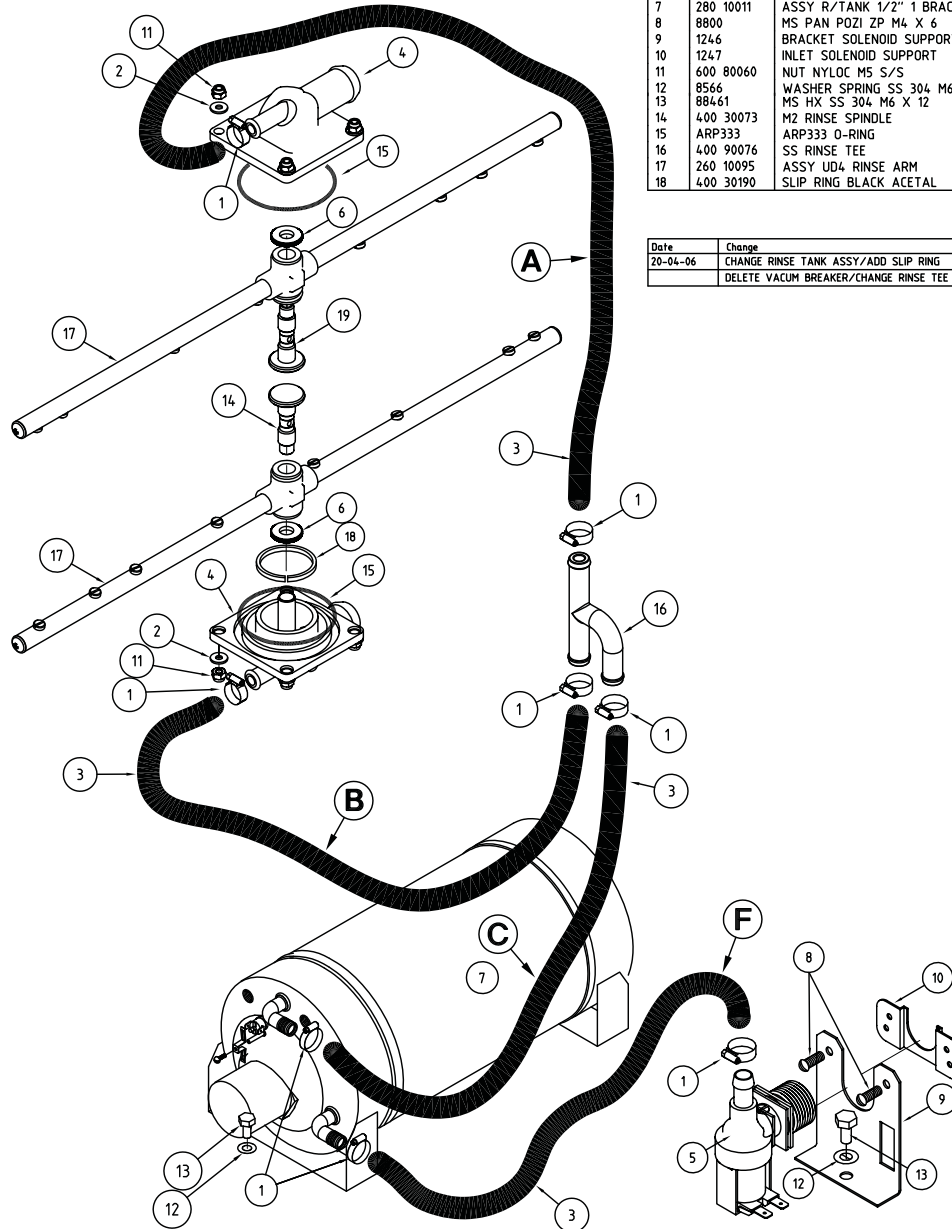


| ITEM | CODE | DESCRIPTION | QTY |
|------|-----------|-----------------------------------|-----|
| 1 | ASS6 | HOSECLIP ASS6 | 8 |
| 2 | 85651 | MS PLAIN SS WASHER | 8 |
| 3 | 600 60073 | HOTOTAL HOSE 11mm X 19mm | |
| 4 | 251 10031 | WASH TEE SPINDLE ASSY UPPER | 2 |
| 5 | 3342 | SOLENOID VALVE GL 1 WAY 90o | 1 |
| 6 | 400 30074 | NUT M2 WASH SPINDLE | 2 |
| 7 | 400 10129 | 3KW ASSY R/TANK 1/2" 1 THERMOSTAT | 1 |
| 8 | 8800 | MS PAN POZI ZP M4 X 6 | 2 |
| 9 | 1246 | BRACKET SOLENOID SUPPORT | 1 |
| 10 | 1247 | INLET SOLENOID SUPPORT | 1 |
| 11 | 600 80060 | NUT NYLOC M5 S/S | 8 |
| 12 | 8566 | WASHER SPRING SS 304 M6 | 3 |
| 13 | 88461 | MS HX SS 304 M6 X 12 | 3 |
| 14 | 400 30073 | M2 RINSE SPINDLE | 2 |
| 15 | ARP333 | ARP333 O-RING | 2 |
| 16 | 400 90076 | SS RINSE TEE | 1 |
| 17 | 260 10095 | ASSY UD4 RINSE ARM | 2 |
| 18 | 400 30190 | SLIP RING BLACK ACETAL | 1 |

| Date | Change | Issue |
|----------|------------------------|-------|
| 30-10-06 | CHABGE RINSE TANK ASSY | 3-C |

WASHTECH UD5 10A RINSE ASSY.

UD5 0011 05-05-06 3 B

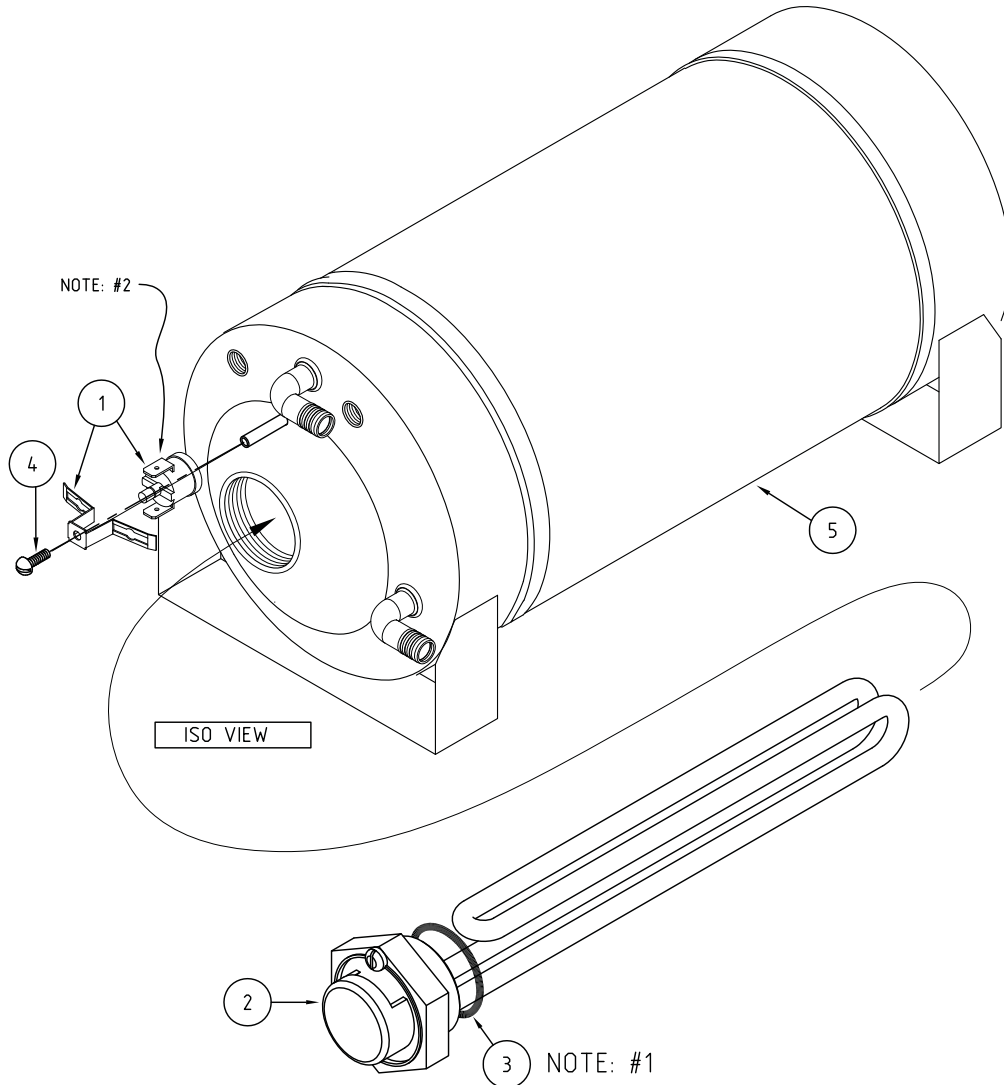


| ITEM | CODE | DESCRIPTION | QTY |
|------|-----------|-----------------------------|-----|
| 1 | ASS6 | HOSECLIP ASS6 | 8 |
| 2 | 85651 | M5 PLAIN SS WASHER | 8 |
| 3 | 600 60073 | HOTOTAL HOSE 11mm X 19mm | 1 |
| 4 | 251 10031 | WASH TEE SPINDLE ASSY UPPER | 2 |
| 5 | 3342 | SOLENOID VALVE GL 1 WAY 90o | 1 |
| 6 | 400 30074 | NUT M2 WASH SPINDLE | 2 |
| 7 | 280 10011 | ASSY R/TANK 1/2" 1 BRACON | 1 |
| 8 | 8800 | MS PAN POZI ZP M4 X 6 | 2 |
| 9 | 1246 | BRACKET SOLENOID SUPPORT | 1 |
| 10 | 1247 | INLET SOLENOID SUPPORT | 1 |
| 11 | 600 80060 | NUT NYLOC M5 S/S | 8 |
| 12 | 8566 | WASHER SPRING SS 304 M6 | 3 |
| 13 | 88461 | MS HX SS 304 M6 X 12 | 3 |
| 14 | 400 30073 | M2 RINSE SPINDLE | 2 |
| 15 | ARP333 | ARP333 O-RING | 2 |
| 16 | 400 90076 | SS RINSE TEE | 1 |
| 17 | 260 10095 | ASSY UD4 RINSE ARM | 2 |
| 18 | 400 30190 | SLIP RING BLACK ACETAL | 1 |

| Date | Change | Issue |
|----------|---------------------------------------|-------|
| 20-04-06 | CHANGE RINSE TANK ASSY/ADD SLIP RING | 3-B |
| | DELETE VACUM BREAKER/CHANGE RINSE TEE | |

3KW ASSY R/TANK 1/2" 1 THERMOSTAT

400 10129 30-10-06 3 A



| ITEM | CODE | DESCRIPTION | QTY |
|------|-----------|--|-----|
| 1 | 600 30088 | THERMOSTAT TY60/R-95C [with E bracket] | 1 |
| 2 | 600 30249 | ELEMENT 3kW RINSE | 1 |
| 3 | 3006 | GASKET ELEMENT 54.0:1.6mm | 1 |
| 4 | 600 80052 | MS PAN SLOT ZP M3X6. | 1 |
| 5 | 400 10114 | RINSE TANK NEW SUB ASSY 1/2" | 1 |

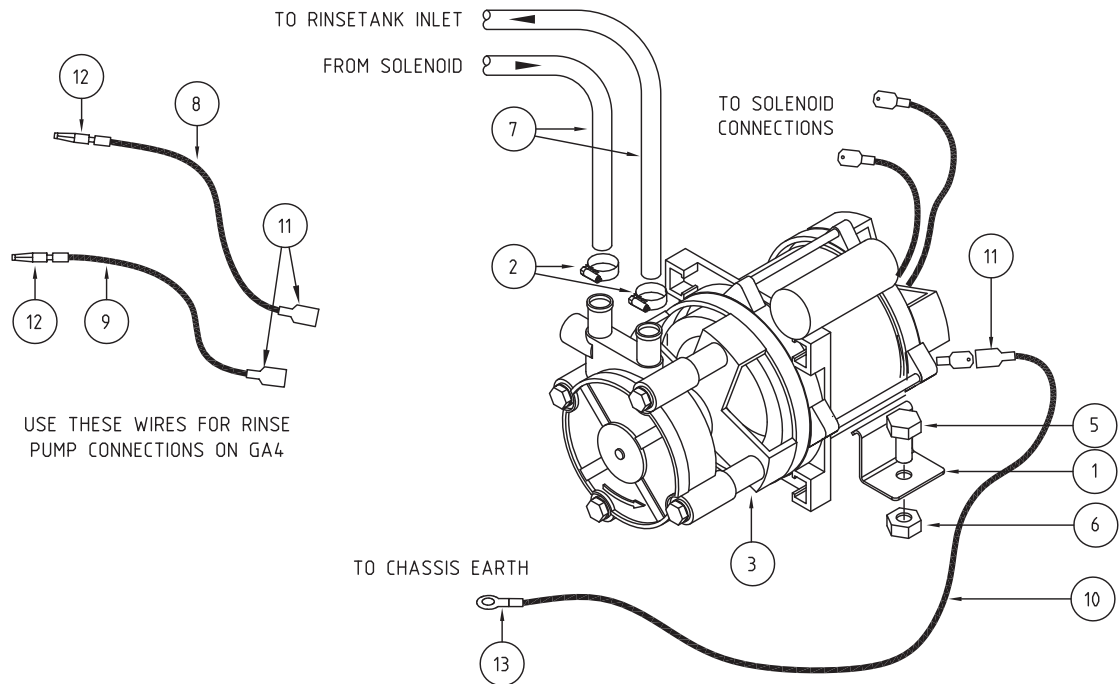
NOTE: 1. USE GRAPHITE JOINING COMPOUND ON BOTH SIDES OF GASKET BEFORE INSERTING ONTO ELEMENT.

NOTE: 2. USE HEAT TRANSFER COMPOUND UNDER THERMOSTAT HEAD.

Appendices

RINSE PUMP KIT 0440021

400 90142-1 29-11-07 1D



| PARTS LIST - LGB RINSE PUMP KIT 0440021 | | | |
|---|-----------|---------------------------------------|------|
| ITEM | CODE | DESCRIPTION | QTY |
| 1 | 400 20043 | BRACKET -RINSE PUMP | 2 |
| 2 | ASS06 | HOSE CLIP ASS6 | 3 |
| 3 | 600 30116 | 0.46kW RINSE PUMP WITH CAPACITOR 10uf | 1 |
| 4 | H1909B | DOUBLE ADAPTOR | 2 |
| 5 | 88461 | BOLT M6 x 12 S/S HEX | 2 |
| 6 | 8106 | NUT M6 HEX SS | 2 |
| 7 | 600 60073 | HOSE HOTAL 11mm x 19mm | 0.7M |
| 8 | 600 30016 | WIRE 0.75mm BLACK | 0.5M |
| 9 | 600 30021 | WIRE 0.75mm PINK | 0.5M |
| 10 | 600 30014 | WIRE 0.75mm GREEN/YELLOW | 0.5M |
| 11 | H3560 | TERMINAL SPADE RED | 3 |
| 12 | H3919 | BULLET MALE RED | 2 |
| 13 | H4115 | RING TERMINAL RED | 1 |
| 14 | 400 90142 | UNDERCOUNTERS RETROFIT DIAGRAM | 1 |
| 15 | 400 90143 | PASSTHROUGHS RETROFIT DIAGRAM | 1 |
| 16 | GA40010 | GA4 SUBSTITUTE DIAGRAM | 1 |

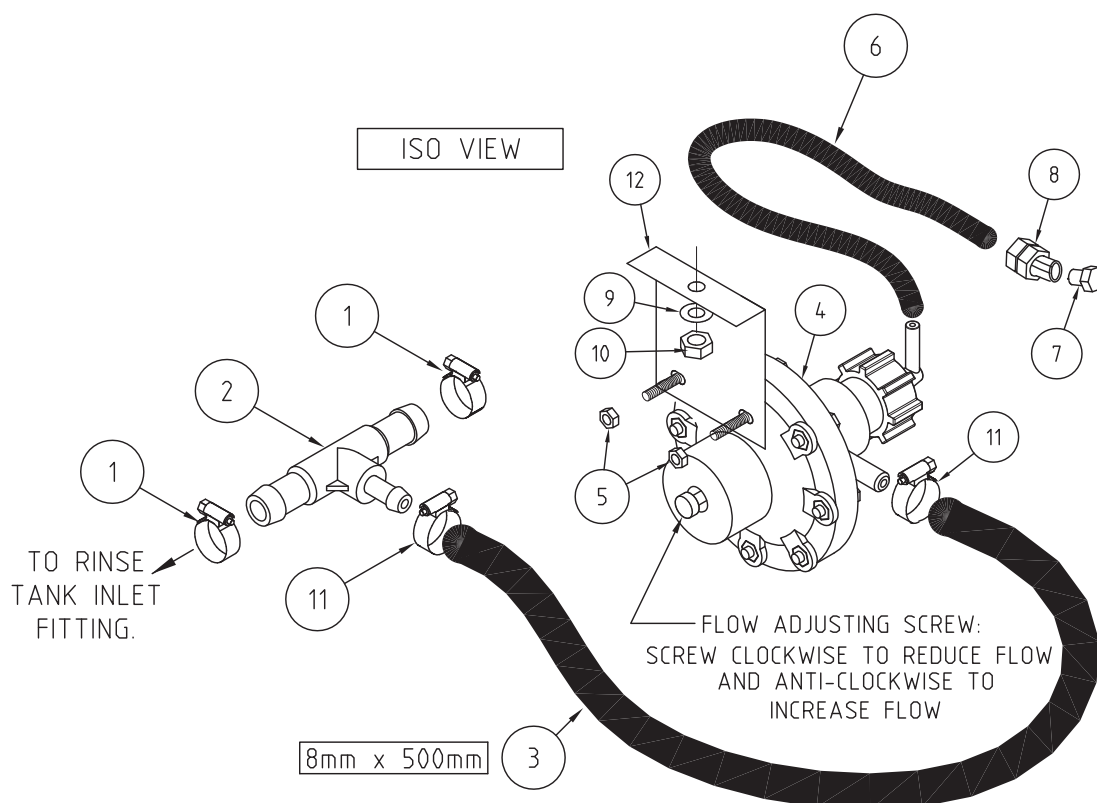
1. Install rinse pump using the brackets and bolts provided
2. Remove hose from solenoid and reconnect it to rinse pump outlet using hose clamp provided
3. Connect hose #7 supplied in kit from pump inlet to solenoid using hose clamp provided
4. Earth pump on chasis earth stud with green\yellow wire provided in wiring loom.
5. Connect pump wiring according to electrical diagrams provided in service manual or schematic diagram, supplied with the machine.

RINSE AID INJECTOR KIT 0440012 - GENERAL

400 90141 16-10-07 1B

INSTALLATION

1. MOUNT BRACKET/PUMP INSIDE FRONT OF BASE OF MACHINE
2. REPLACE BLUE TEE FITTED ON RINSE TANK INLET HOSE WITH GREY TEE ②. (ALTERNATIVELY CUT RINSE TANK INLET HOSE AT AN APPROPRIATE POINT AND INSERT PLASTIC TEE ② BETWEEN HOSE ENDS)
3. ASSEMBLE ALL OTHER COMPONENTS AS SHOWN BELOW AND INSERT HOSE ⑥ INTO CHEMICAL CONTAINER.
4. SETUP IS NOW COMPLETED AND WILL REQUIRE ADJUSTMENT VIA FLOW ADJ. SCREW. THE VOLUME OF RINSE FLUID WILL VARY FOR DIFFERENT PRODUCT, BUT TYPICALLY 5 MLS PER CYCLE IS REQUIRED.



| PARTS LIST - HYDRAULIC RINSE AID INJECTOR KIT 0440012 | | | |
|---|-----------|-------------------------------------|-----|
| ITEM | CODE | DESCRIPTION | QTY |
| 1 | ASS06 | HOSECLIP ASS06 | 2 |
| 2 | C180408 | T-NIPPLE F.INJECT.W/CEN REDUC. | 1 |
| 3 | 600 60101 | HOSE 8mm | 0.5 |
| 4 | C620120 | RINSE AID INJECTOR | 1 |
| 5 | 8152 | NUT HX ZP M4 | 2 |
| 6 | D24-10 | TUBING D260 .25 OD 8FT | 1 |
| 7 | D24-11SP | FOOT STRAINER | 1 |
| 8 | 600 80009 | M10 SS HEX NUT | 2 |
| 9 | 8566 | WASHER SPRING SS 304 M6 | 1 |
| 10 | 8106 | NUT Hx SS M6 | 1 |
| 11 | ASS04 | HOSECLIP ASS04 | 2 |
| 12 | 275 20048 | RINSE AID INJECTOR MOUNTING BRACKET | 1 |
| 13 | 400 90141 | RINSE AID INJECTOR RETROFIT DIAGRAM | 1 |

400 90033-1 15/01/2008 REV 1-E



Installation

1. Fit Detergent pump #1 and detergent prime switch #2 on base of machine (for standalone installation) or on wiring tray (see page 2 for installation variants).
2. Remove bolt and nut plug, blocking hole in rear wall of wash tank cabinet and fit detergent inlet kit #5 as shown.
3. Connect one end of the detergent tube #4 to the bulkhead fitting of the detergent inlet kit and route the pipe to the detergent pump keeping it away from the hot components such as rinse tank. Cut the tube when it reaches detergent pump and connect it to the outlet connector of the detergent pump.
4. Connect one end of the left over tube #4 to inlet connector of the detergent pump. Fit ballast #6 and filter #7 to the free end of the tube and insert it into container of commercial low foam detergent.
5. Using spare wires, supplied in wiring loom connect detergent pump and prime switch according to electrical diagrams provided in service manual or schematic diagram, supplied with the machine.
6. Detergent pump is set to operate for 10 seconds during wash cycle. Vary detergent injection time if required by adjusting appropriate cam on timer - see Timer section of Service Manual for adjustment procedure.
7. Open machine door, turn on power to machine, press and hold detergent prime switch until chemical flows into machine.

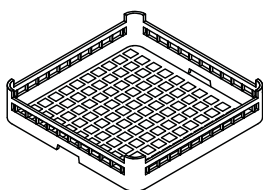
Accessories

WASHTECH UD5 ACCESSORIES

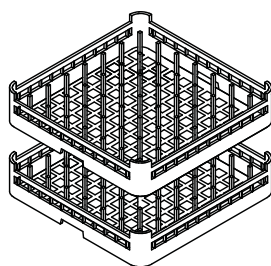
UD5W ACS 19-05-06 3 C



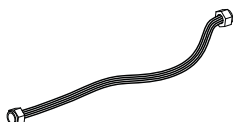
C440201
RUBBER FOOT D.60 X 10



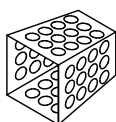
C660702
CUPRACK CB 500mm X 75mm high



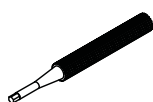
C660312
DISHRACK P12/18 500mm 18 DISH



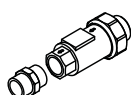
600 60005
HOSE SS 2M



C660503
CUTLERY CONTAINER G



TIMER ADJUSTMENT TOOL



600 60108
DUAL CHECK VALVE

600 60111
3/8-3/8 HEX NIPPLE FITTING

Information supplied in this manual is copyright. No part of this work may be reproduced or copied in any form or by any means, electronic or mechanical without the express permission of the author / publisher.



Distributed In
Australia by

MOFFAT®

740 Springvale Road, Mulgrave 3170, Victoria, Tel 03 9518 3888 Fax 03 9518 3818

Service 1 800 622 216
Parts 1 800 337 963

