

UD

Series 6

UNDERCOUNTER DISHWASHER



Parts Manual

Spare Parts

DESCRIPTION	PART NO
Cabinet & Door	
Control Panel Sub-Assembly	278 10042
Control Panel Label	279 70001
Control Panel Label UDCMD	260 70002
Door Assembly	278 10015
Door Catch Assembly	400 10104
Door Hinge Locknut	255 30002
Door Hinge Pin	255 30001
Door Latch	255 20058
Door Seal Gasket (600mm long)	600 90064
Door Seal Support	278 20009
Door Switch Magnet	600 30182
Front Panel Assembly	278 20016
Front Roller UDCMD	279 30001
Rear Wheel	600 90003
Spine Cover Panel	278 20020
Star Fastener	80002
Controls & Indicators	
Cord Set 15A	600 30255
Cord Set 10A	600 30171
Detergent Prime Switch UDCMD	600 30225
Detergent/Rinse Aid level Sensor	600 30294
Door Reed Switch	600 30183
Drain Switch	600 30213
Power Light	600 30161
Power Switch	600 30214
Pressure Switch 50/25mm	600 30266
Ready Light	600 30162
Relay	600 30080
Relay Base	600 30081
Run Light	600 30163
Start Switch	600 30212
Temperature Gauge	600 90080
Test Switch	3035
Timer	32822
Heating Components	
Over Temperature Thermostat	600 30088
Rinse Element 3 KW	600 30249
Rinse Tank Assembly	400 10129
Rinse Thermostat	3020
Wash Element 2.5 KW	600 30226
Wash Thermostat	30201

Spare Parts

	DESCRIPTION	PART NO
Hoses		
	Drain Pump Inlet Hose (UHB 25)	600 90074
	Drain Pump Outlet Hose	600 60105
	Lower Wash Hose (70 mm long)	6196
	Pressure Switch Hose (specify length)	3067
	Rinse Hose (specify length)	600 60073
	Upper Wash Hose	400 90012
	Wash Pump Inlet Hose (UHB 44)	1262
	Wash Pump Outlet Hose (90 mm long)	6195
Pumps & Solenoids		
	Detergent Pump Head Anko	3653
	Detergent Pump Motor Anko	3651
	Detergent Pump Seko	600 30094
	Drain Pump 50 HZ	600 60102
	Drain Pump 60 HZ	600 60107
	Rinse Aid Injector G	600 30324
	Solenoid Valve	3342
	Wash Pump FIR 50 HZ	3888
	Wash Pump FIR 60 HZ	38881
	Wash Pump ZF 270SX	600 30298
Wash Tank Components		
	Drain Upstand Assembly	279 10044
	Pressure Bell	400 90135
	Rinse Arm Assembly	260 10097
	Rinse Arm Bush	C190624
	Rinse Arm End Plug	400 30200
	Rinse Arm Jet	400 30087
	Rinse Spindle	400 30073
	Scrap Tray Large	279 10052
	Scrap Tray Small	279 10009
	Slip Ring Black Acetal	400 30190
	UD5 Wash Arm Assembly	260 10096
	UD6 Wash Arm Assembly	326 10030
	Wash Arm Bush	C190624
	Wash Arm Jet	400 30088
	Wash Arm Securing Nut	400 30074
	Wash /Drain Inlet Filter	279 20041

Note:

For more parts look in the section “Assembly Diagrams”.

Wash Pump

Part Number

600 30298

Function

Pumps water from the wash tank to the wash arms providing a recirculating wash cycle.

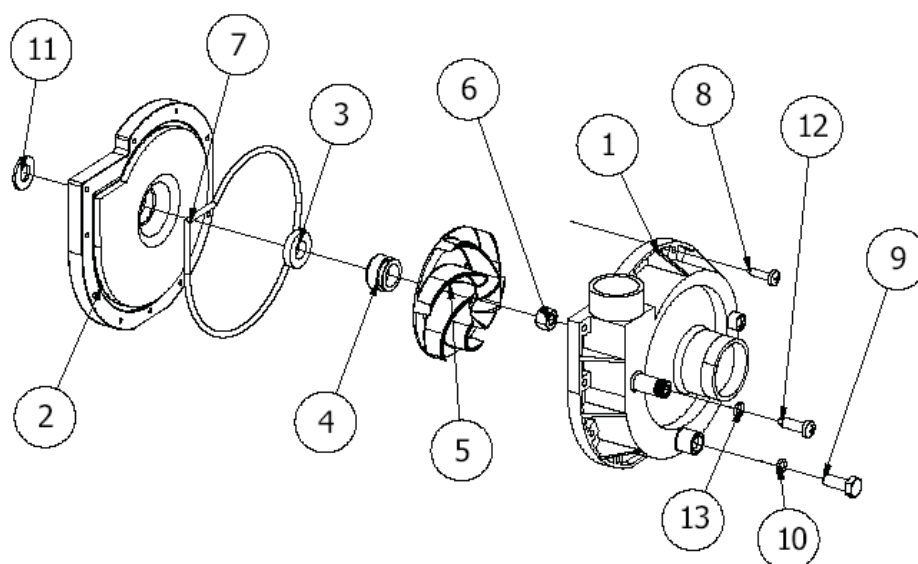
Description

Electric Pump ZF 270 SX

Power:	HP 0.62 Kw 0.45	Speed	2800 rpm
Voltage:	230 V 50Hz	Protection:	IP 20
Amperes:	2.0 A	Hm Min:	0.9 m
Capacitor:	12.5 uF	Hm Max:	9.4 m

Diagram

Hydraulic parts



ITEM	DESCRIPTION	PART #	ITEM	DESCRIPTION	PART #
1	Volute	600 41116	7	O-ring	600 41113
2	Pump flange	600 41117	8	Screw	-
3	Fixed seal	600 41110	9	Plug screw	-
4	Rotating seal	600 41111	10	O-ring plug	-
5	Impeller	600 41114	12	Screw hose connector	-
6	Nut	600 41112	13	O-ring hose connector	-

Replacement

Drain the wash tank and switch off the power.

Disconnect the wires from the pump connectors and the pump capacitor. .

Release the hose clamps on the inlet and outlet pump hoses and remove the pump.

Replace in reverse order.

Wash Pump

Part Number

3888

Function

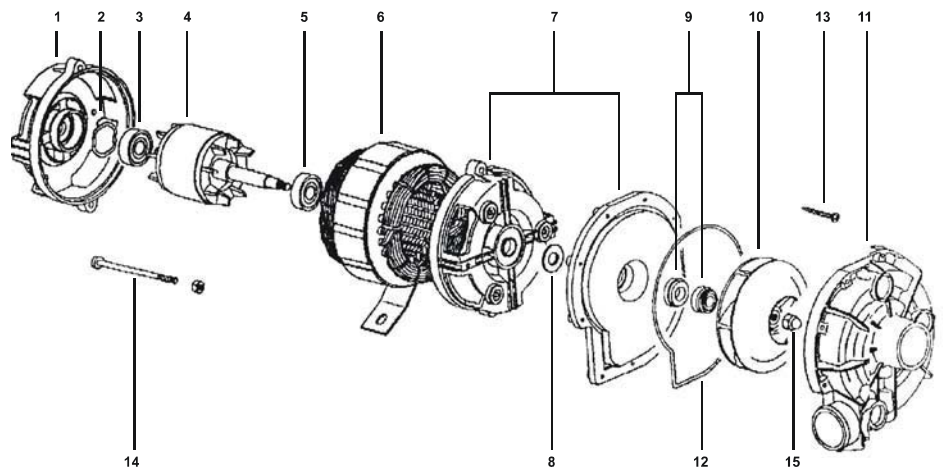
Pumps water from the wash tank to the wash arms providing a recirculating wash cycle.

Description

Electric Pump FIR

Power:	HP 0.5 Kw 0.37	Speed:	2800 rpm
Voltage:	220 V	Amperes:	2.6 A
Frequency:	50 Hz	Capacitor:	12.5 uF/400 V

Diagram



ITEM	DESCRIPTION	PART NO:	ITEM	DESCRIPTION	PART NO:
1	Housing		9	Seal	C630510
2	Compensation Ring		10	Impeller	38882
3	Ball Bearing	6201	11	Volute	38884
4	Rotor		12	Gasket	38886
5	Ball Bearing	6201	13	Pump Housing Screw	
6	Stator		14	Tie Rod	
7	Pump Support	38885	15	Impeller Nut	
8	Water Protect.Ring				

Replacement

Drain the wash tank and switch off the power.

Disconnect the wires from the pump connectors and the pump capacitor.

Remove M6 bolt that fastens the pump to the floor of the machine.

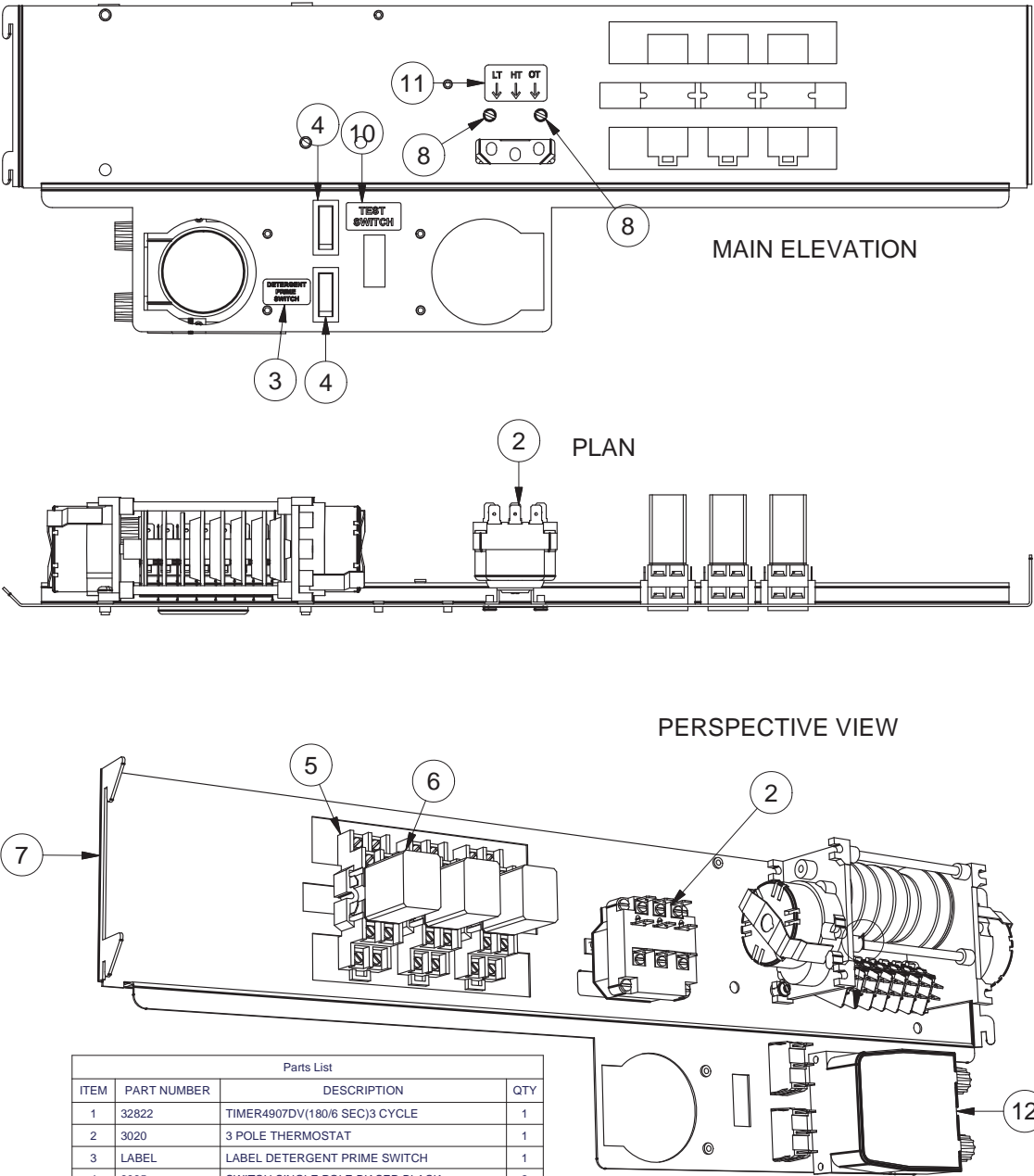
Release the hose clamps on the inlet and outlet pump hoses and remove the pump.

Replace in reverse order.

Assembly Diagrams

UD6 WIRING TRAY ASSEMBLY WASHTECH

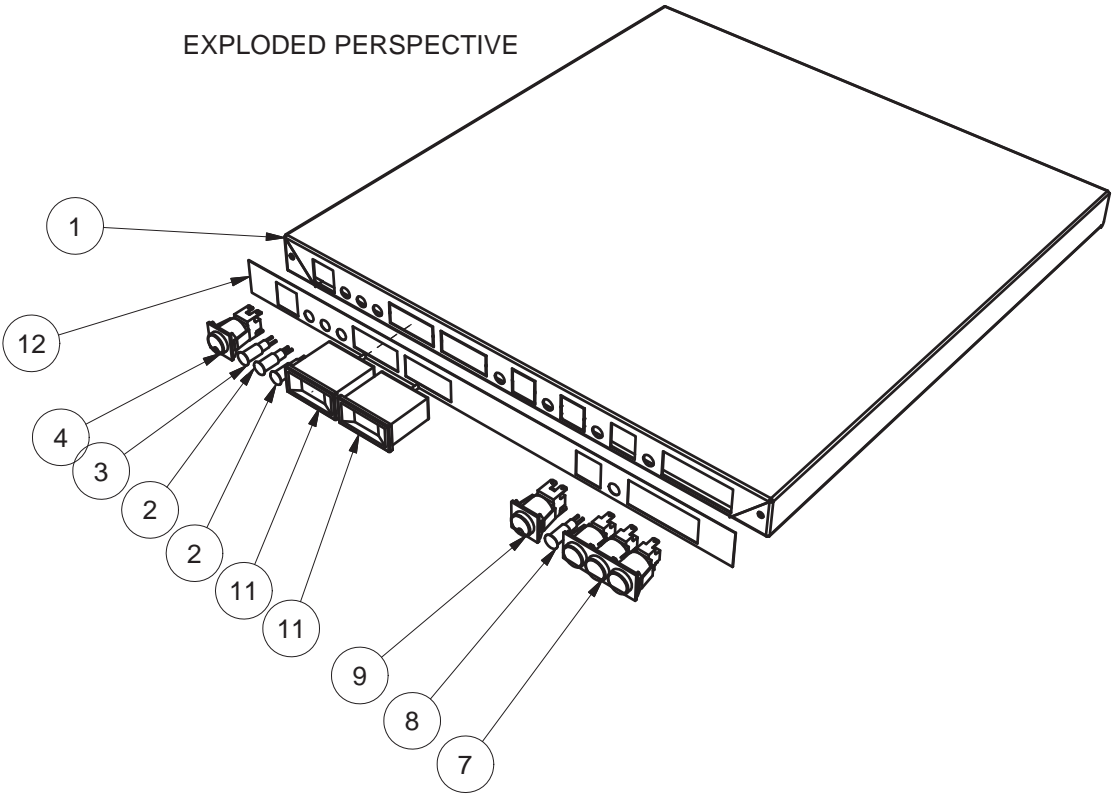
279 10020 5/02/2010 REV 3-C



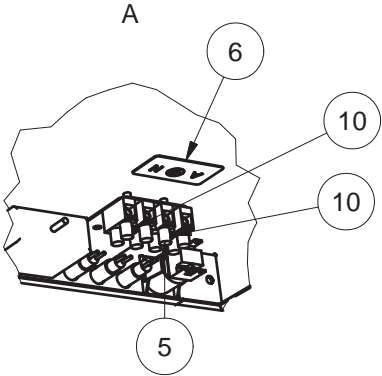
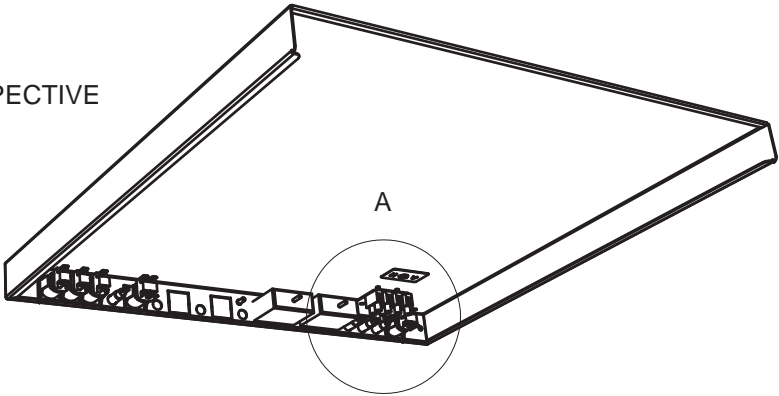
UD6 CONTROL PANEL ASSY

279 10043 9/08/2008 REV 3-A

EXPLODED PERSPECTIVE



REAR PERSPECTIVE

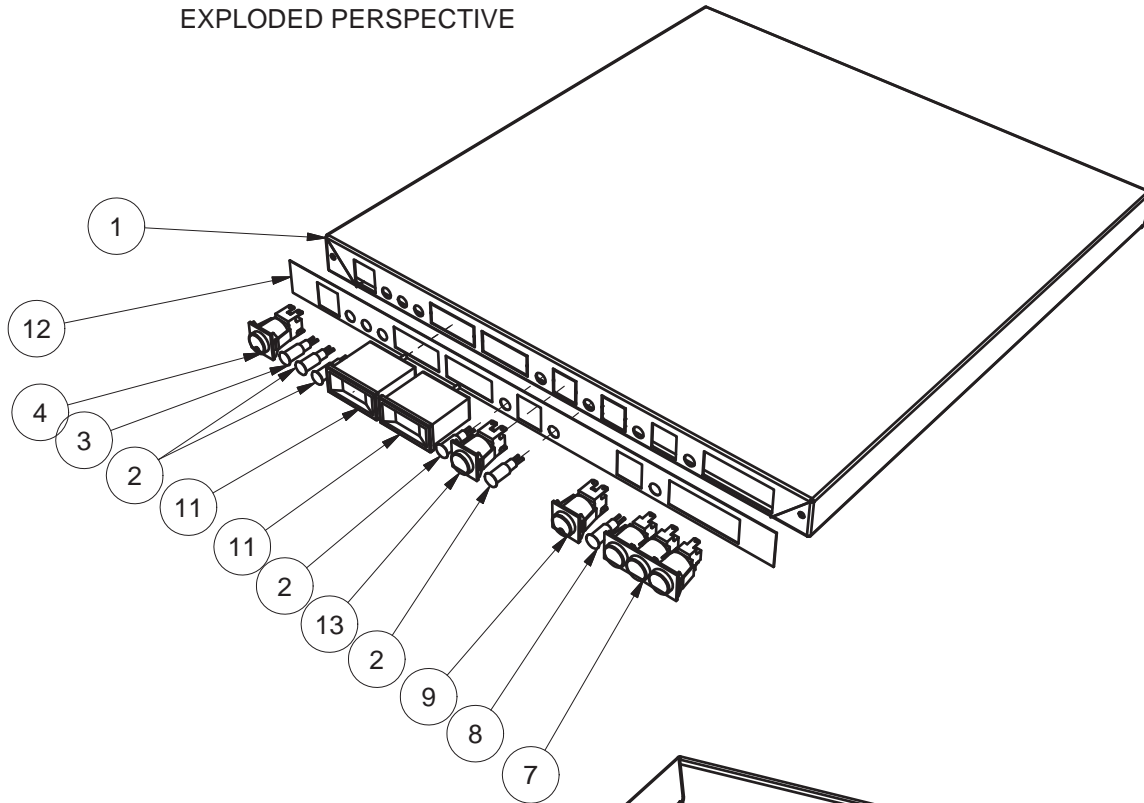


Parts List			
ITEM	PART NUMBER	DESCRIPTION	QTY
1	278 10042	UD5 WASHTECH CONTROL PANEL SUB ASSY	1
2	600 30162	LENS & NEON ASSY (AMBER) 12mm	2
3	600 30161	LENS & NEON ASSY (RED) 12mm	1
4	600 30214	SWITCH POWER 2P NO/NO LATCHED	1
5	32271	TERMINAL STRIP 4 WAY	1
6	Power Terminal Label	POWER TERMINAL LABEL	1
7	600 30212	3 BANK 1 POLE MOMENTARY SWITCH	1
8	600 30163	LENS & NEON ASSY (GREEN) 12mm	1
9	600 30213	SWITCH DRAIN 2P NO/NC	1
10	8802	MS PAN POZI ZP M4x25	2
11	600 90080	TEMP GAUGE RECTANGULAR 58x25	2
12	279 70001	UD6 CONTROL PANEL LABEL WASHTECH	1

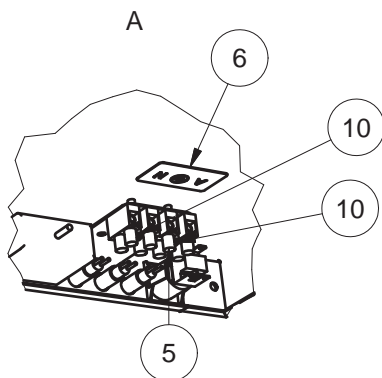
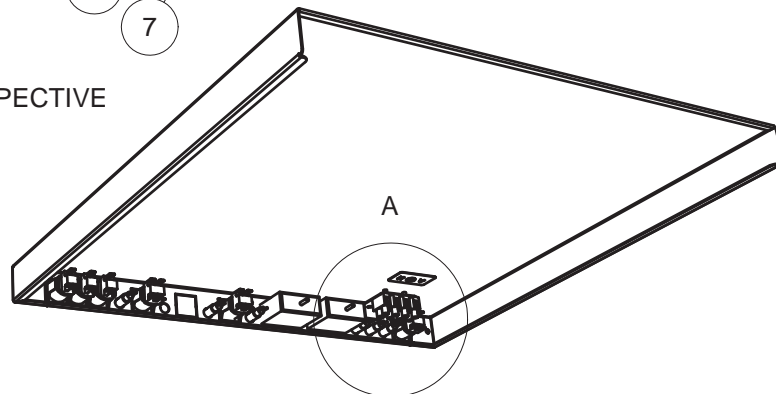
UD MCD WASHTECH CONTROL PANEL ASSY

279 10046 23/09/2009 REV 2-A

EXPLODED PERSPECTIVE



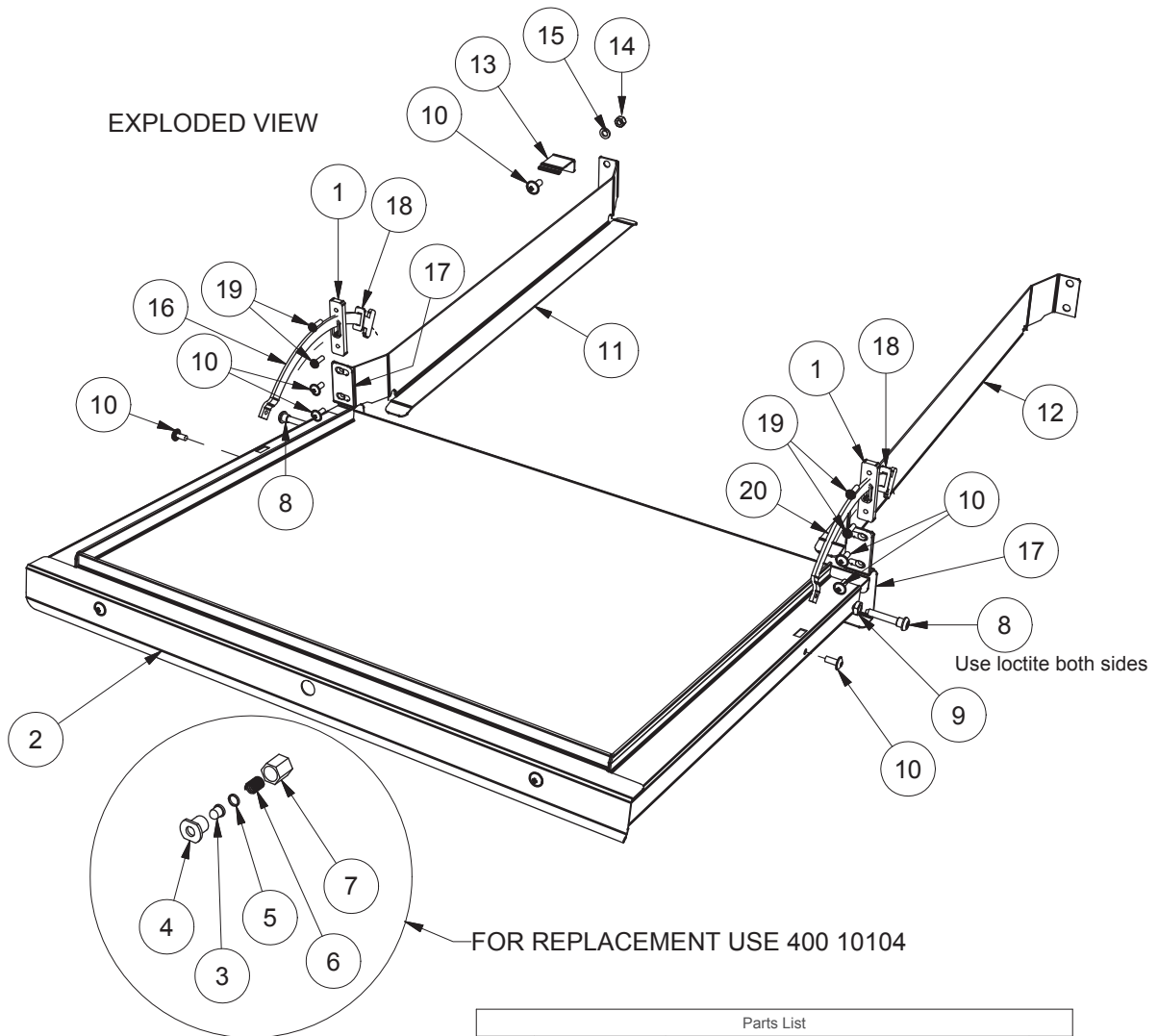
REAR PERSPECTIVE



Parts List			
ITEM	PART NUMBER	DESCRIPTION	QTY
1	278 10042	UD5 WASHTECH CONTROL PANEL SUB ASSY	1
2	600 30162	LENS & NEON ASSY (AMBER) 12mm	4
3	600 30161	LENS & NEON ASSY (RED) 12mm	1
4	600 30214	SWITCH POWER 2P NO/NO LATCHED	1
5	32271	TERMINAL STRIP 4 WAY	1
6	Power Terminal Label	POWER TERMINAL LABEL	1
7	600 30212	3 BANK 1 POLE MOMENTARY SWITCH	1
8	600 30163	LENS & NEON ASSY (GREEN) 12mm	1
9	600 30213	SWITCH DRAIN 2P NO/NC	1
10	8802	MS PAN POZI ZP M4x25	2
11	600 90080	TEMP GAUGE RECTANGULAR 58x25	2
12	260 70002	UDC5 CONTROL PANEL LABEL	1
13	600 30225	SWITCH PRIME 2P NO/NC MOMENTORY	1

UD6 DOOR ASSEMBLY

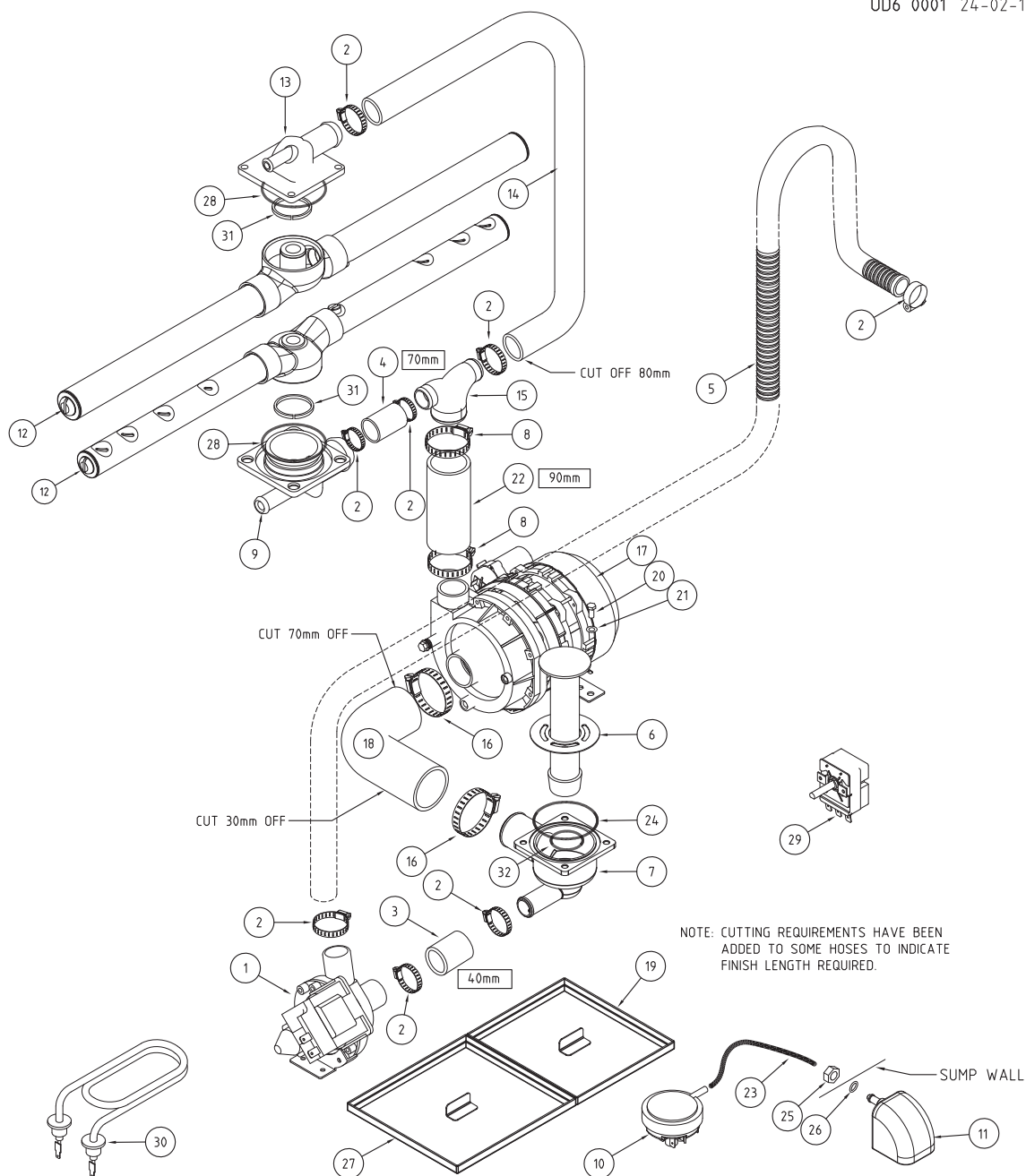
279 10001 5/05/2008 REV 3-A



Parts List			
ITEM	PART NUMBER	DESCRIPTION	QT
1	400 90113	HINGE GUIDE	2
2	278 10015	UD5 DOOR ASSEMBLY	1
3	40030032	DOOR CATCH PLUNGER	1
4	400 30030	DOOR CATCH FACE BOLT	1
5	400 30033	DOOR CATCH SPACER FOR PLUNGER	1
6	400 90024	DOOR CATCH COIL SPRING S/S	1
7	400 30031	DOOR CATCH CAP NUT	1
8	255 30001	GLV DOOR HINGE PIN	2
9	255 30002	GLV HINGE LOCKNUT	2
10	600 80017	M5 x 12 SS TRUSS HEAD SCREW	7
11	278 10045	UD5 RACK SLIDE ASSY (LH)	1
12	278 10046	UD5 RACK SLIDE ASSY (RH)	1
13	255 20058	GLV5 DOOR LATCH	1
14	8110	M5 SS HEX NUT	1
15	8567	WASHER SPRING SS 304 M5	1
16	278 20065	UD5/GLV5/GL5 DOOR STAY LH	1
17	255 20116	GLV5 SPLASH BAFFLE	2
18	278 20066	GLV5/UD5/GL5 DOOR STOP BRKT	2
19	600 80059	PAN HEAD POZI DRIVE SCREW 6g x 12	4
20	278 20067	GLV5/UD5/GL5 DOOR STAY RH	1
21	279 20037	TOP WRAP UD6	1

UD6 WASH ASSY

UD6 0001 24-02-10 3 E

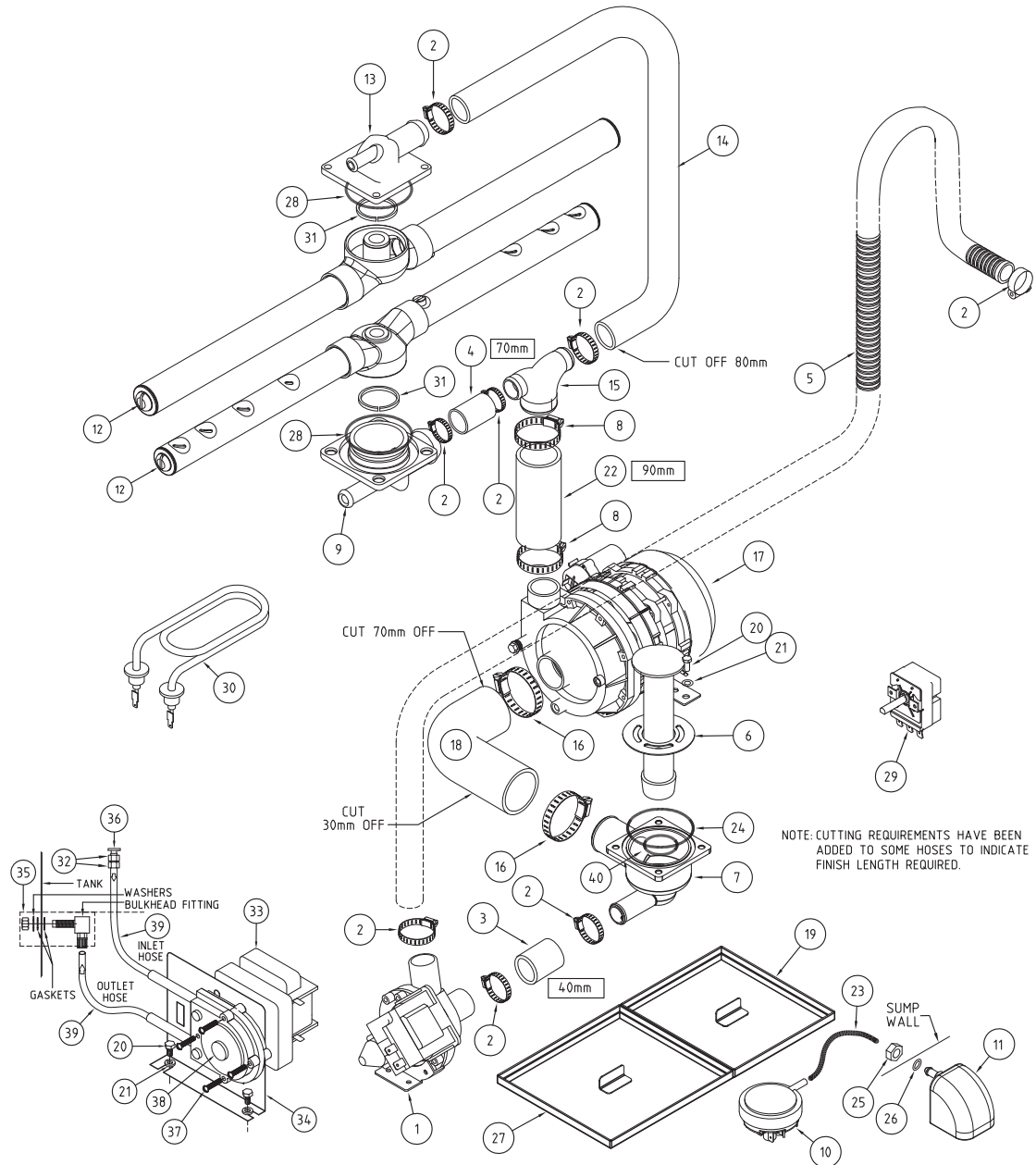


ITEM	CODE	DESCRIPTION	QTY
1	600 60102	DRAIN PUMP B20-6 220-240V 50HZ	1
2	ASS16	HOSECLIP ASS16	8
3	6196	HOSE 25mm 2 PLY RADIATOR	130mm
4	6196	HOSE 25mm 2 PLY RADIATOR	70mm
5	600 60105	HOSE DRAIN PUMP 25M	1
6	279 10044	UD6 UPSTAND ASSY	1
7	400 30202	GLV6/UD6 WASH SUMP CASTING	1
8	ASS24	ASS24 HOSE CLAMP	2
9	400 90078	CASTING GM/GL WASH TEE	1
10	600 30266	METAFLEX PRESSURE SWITCH	2
11	400 90135	SQUARE PRESSURE BELL CASTING	1
12	360 10030	M2/ME/UD ALL SS WASH ARM ASSY	2
13	251 10031	WASH TEE ASSY UPPER/LOWER GLV/UD	1
14	400 90012	HOSE GLV & UD UPPER WASH	1
15	400 90069	25X38 CAST SS REDUCING TEE	1
16	ASS28	HOSECLIP ASS28	2

ITEM	CODE	DESCRIPTION	QTY
17	600 30298	PUMP WASH 0.5HP ZF 270 SX	1
18	1262	HOSE WASH PUMP INLET UHB44	1
19	279 10009	UD6 FILTER ASSY	1
20	88461	MS HX SS 304 M6x12	1
21	8566	WASHER SPRING M6	1
22	6195	HOSE 38mm 2 PLY RADIATOR	90mm
23	3067	HOSE PRESSURE SW VACUUM 4mm	210mm
24	ARP336	ARP336 O-RING	1
25	600 80009	NUT HX SS T304 HEX M10	1
26	ARP205	ARP205 O-RING	1
27	279 10052	UD6 LARGE FILTER ASSY	1
28	ARP333	ARP333 O-RING	2
29	30201	1 POLE THERMOSTAT	1
30	600 30226	ELEMENT 2500W 240V (THREE LOOP)	1
31	400 30190	SLIP RING BLACK ACETAL	2
32	ARP38X2	O-RING 38X2 N70	1

UD6 MCD WASH ASSY

UD6 0008 24-02-10 1D

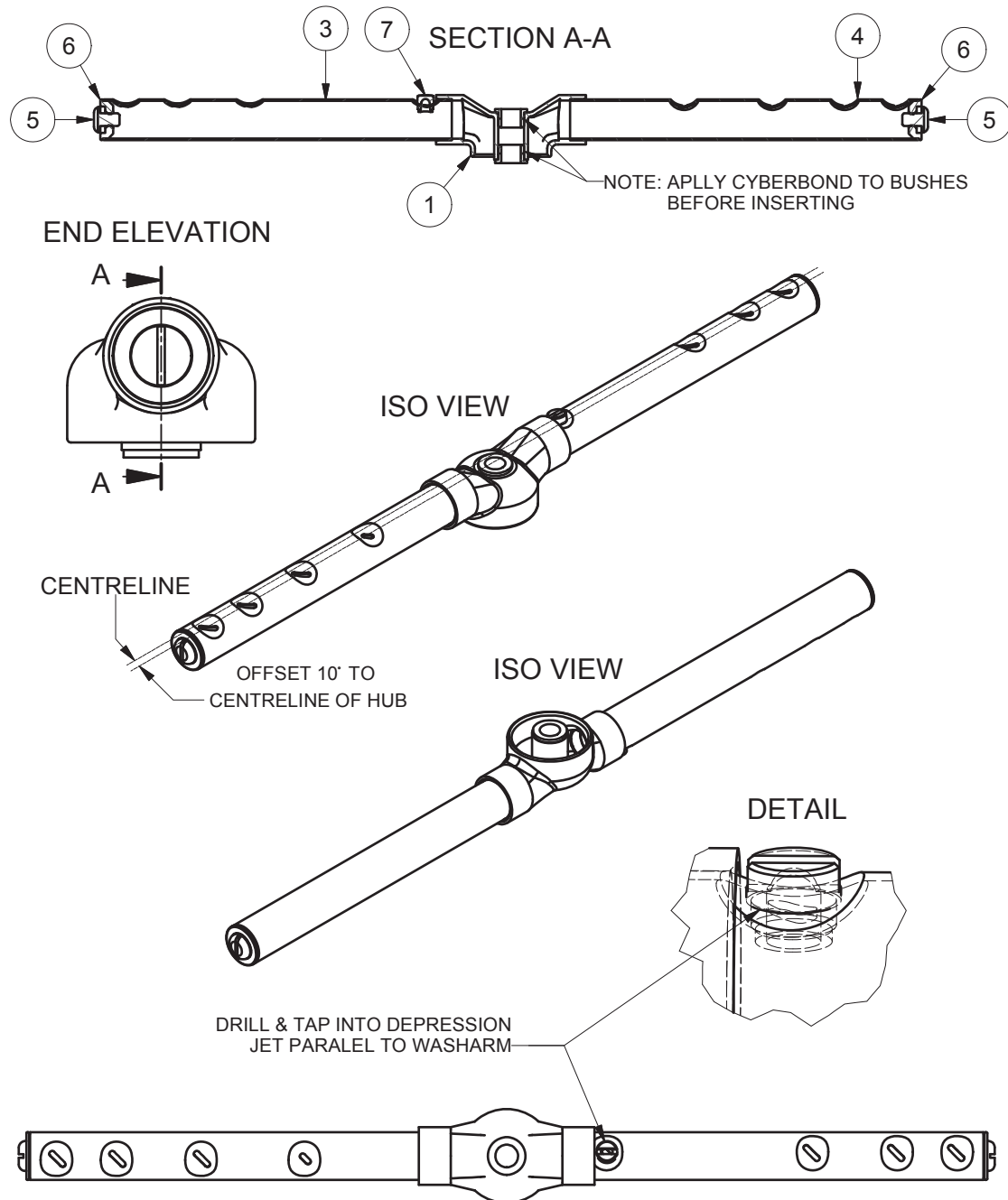


ITEM	CODE	DESCRIPTION	QTY
1	600 60102	DRAIN PUMP B20-6 220-240V 50HZ	1
2	ASS16	HOSECLIP ASS16	8
3	6196	HOSE 25mm 2 PLY RADIATOR	130mm
4	6196	HOSE 25mm 2 PLY RADIATOR	70mm
5	600 60105	HOSE DRAIN PUMP 2.5M	1
6	279 10044	UD6 UPSTAND ASSY	1
7	400 30202	GLV6/UD6 WASH SUMP CASTING	1
8	ASS24	ASS24 HOSE CLAMP	2
9	400 90078	CASTING GM/GL WASH TEE	1
10	600 30266	METAFLEX PRESSURE SWITCH	2
11	400 90135	SQUARE PRESSURE BELL CASTING	1
12	326 10030	M2/ME/UD ALL SS WASH ARM ASSY	2
13	251 10031	WASH TEE ASSY UPPER/LOWER GLV/UD	1
14	400 90012	HOSE GLV & UD UPPER WASH	1
15	400 90069	25X38 CAST SS REDUCING TEE	1
16	ASS28	HOSECLIP ASS28	2
17	600 30298	PUMP WASH 0.5HP ZF 270 SX	1
18	1262	HOSE WASH PUMP INLET UHB44	1
19	279 10009	UD6 FILTER ASSY	1
20	88461	MS HX SS 304 M6x12	2

ITEM	CODE	DESCRIPTION	QTY
21	8566	WASHER SPRING M6	2
22	6195	HOSE 38mm 2 PLY RADIATOR	90mm
23	3067	HOSE PRESSURE SW VACUUM 4mm	210mm
24	ARP336	ARP336 O-RING	1
25	600 80009	NUT HX SS T304 HEX M10	1
26	ARP205	ARP205 O-RING	1
27	279 10052	UD6 LARGE FILTER ASSY	1
28	ARP333	ARP333 O-RING	2
29	30201	1 POLE THERMOSTAT	1
30	600 30226	ELEMENT 2500W 240V (THREE LOOP)	1
31	400 30190	SLIP RING BLACK ACETAL	2
32	600 80009	M10 304 HEX NUT	2
33	3651	PERI MOTOR 820-30/36 RPM	1
34	400 10012	CHEMICAL PUMP BRACKET	1
35	600 30170	SEKO SS DETERGENT INLET KIT	1
36	D24-11SP	FOOT STRAINER (D260)	1
37		SCREWS AS SUPPLIED	4
38	3653	PERI PUMP HEAD	1
39	6199	TUBE POLY 1/4" WHITE	2m
40	ARP38X2	O-RING ARP38X2	1

ASSY M2/ME/UD SS WASH ARM ASSY

326 10030 8/08/2008 REV 3-C



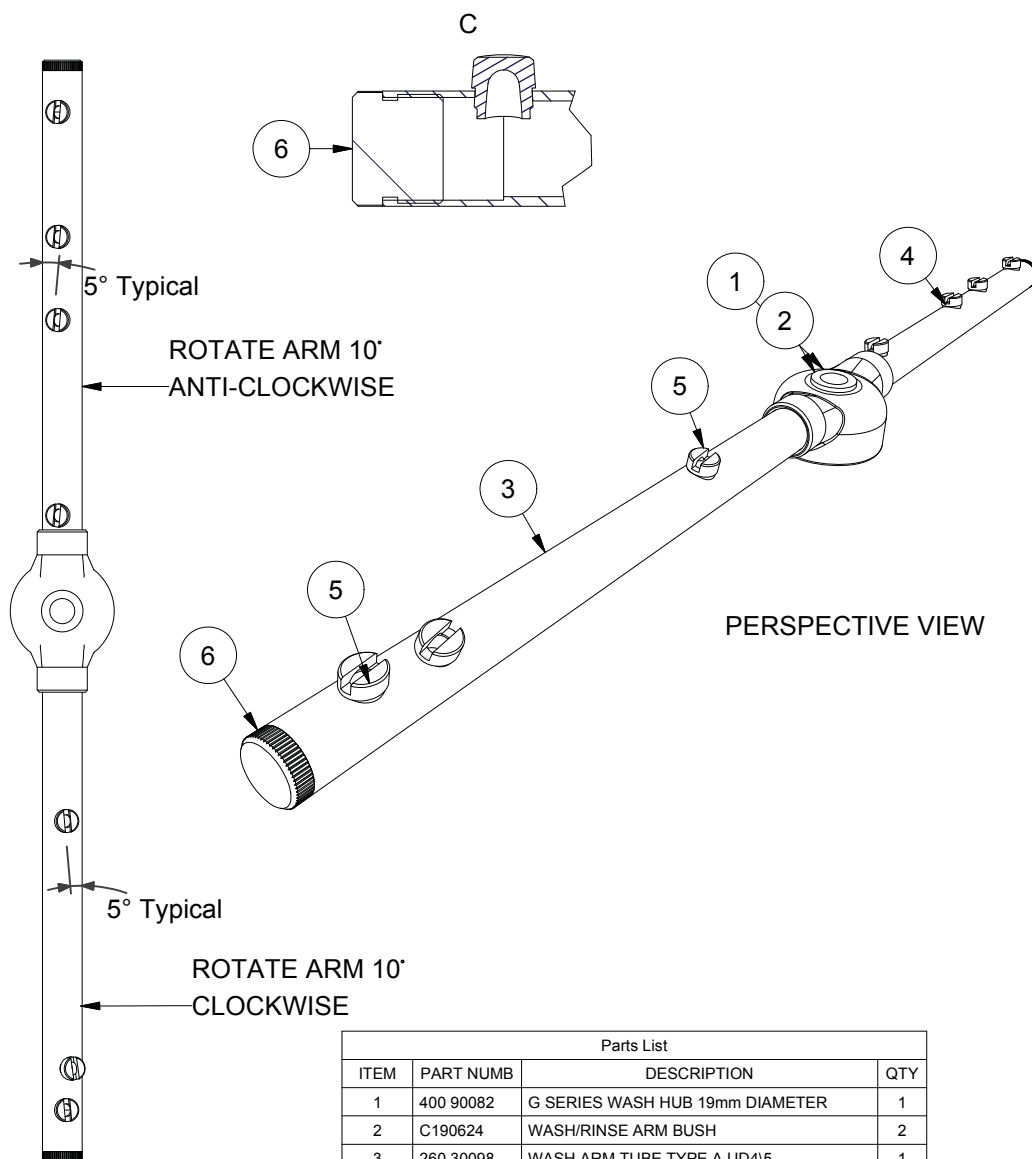
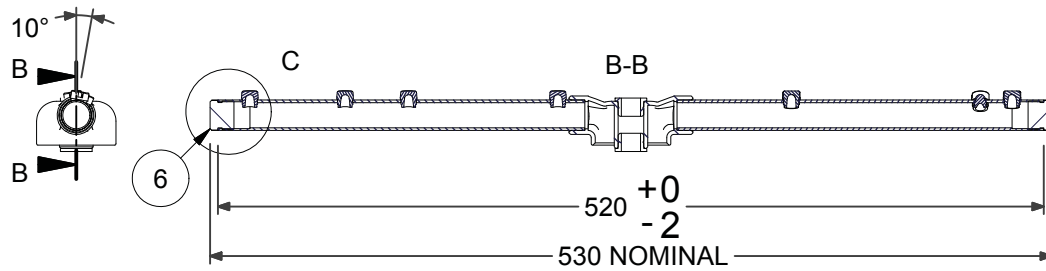
Parts List			
ITEM	PART NUMBER	DESCRIPTION	QTY
1	400 90068	WASH HUB M2	1
3	400 30068	WASH ARM SS TUBE AL8/PW/M2(3) TYPE A	1
4	400 30067	WASH ARM SS TUBE AL8/PW/M2(3) TYPE B	1
5	600 80072	M8 x 12 PAN SLOT SS MACHINE SCREW	2
6	400 30101	1" WASH ARM END PLUG	2
6	190624C	BUSH FOR PLASTIC ARM F45	2
7	400 30088	MACHINED WASH JET	1

DATE	DESCRIPTION	REV
18/08/2005	UPDATE WASHARMS	2-D
30/08/2005	PRODUCTION RUN	3-A
29/09/2005	ADD NOTE	3-B
08-08-08	ADD JET	3-C

ASSY UD5 WASH ARM

260 10096 23/01/2006 REV 1-F

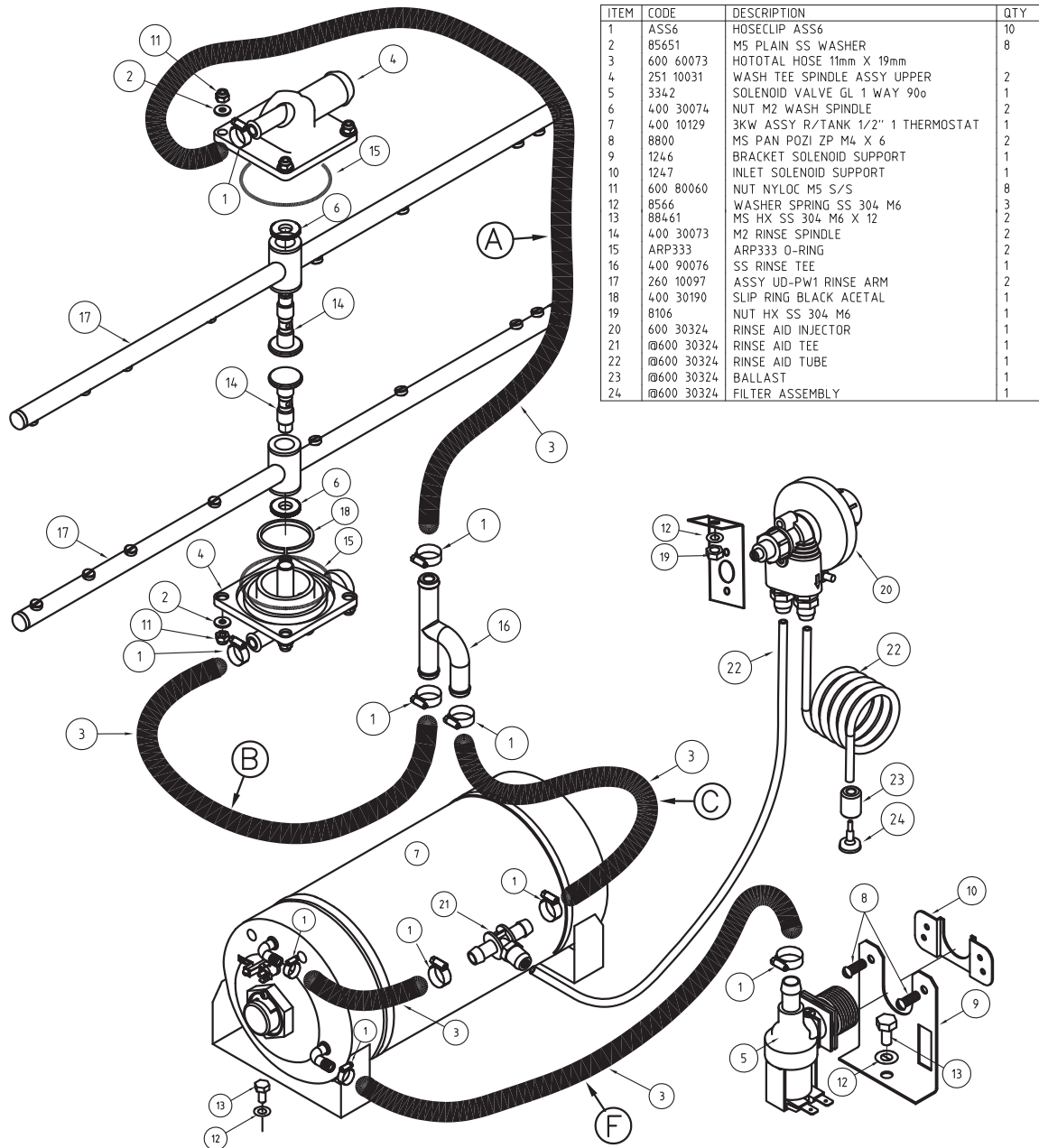
MAIN ELEVATION



Parts List			
ITEM	PART NUMB	DESCRIPTION	QTY
1	400 90082	G SERIES WASH HUB 19mm DIAMETER	1
2	C190624	WASH/RINSE ARM BUSH	2
3	260 30098	WASH ARM TUBE TYPE A UD4/5	1
4	260 30099	WASH ARM TUBE TYPE B UD4/5	1
5	400 30088	MACHINED WASH JET	7
6	400 30187	WASH ARM END	2

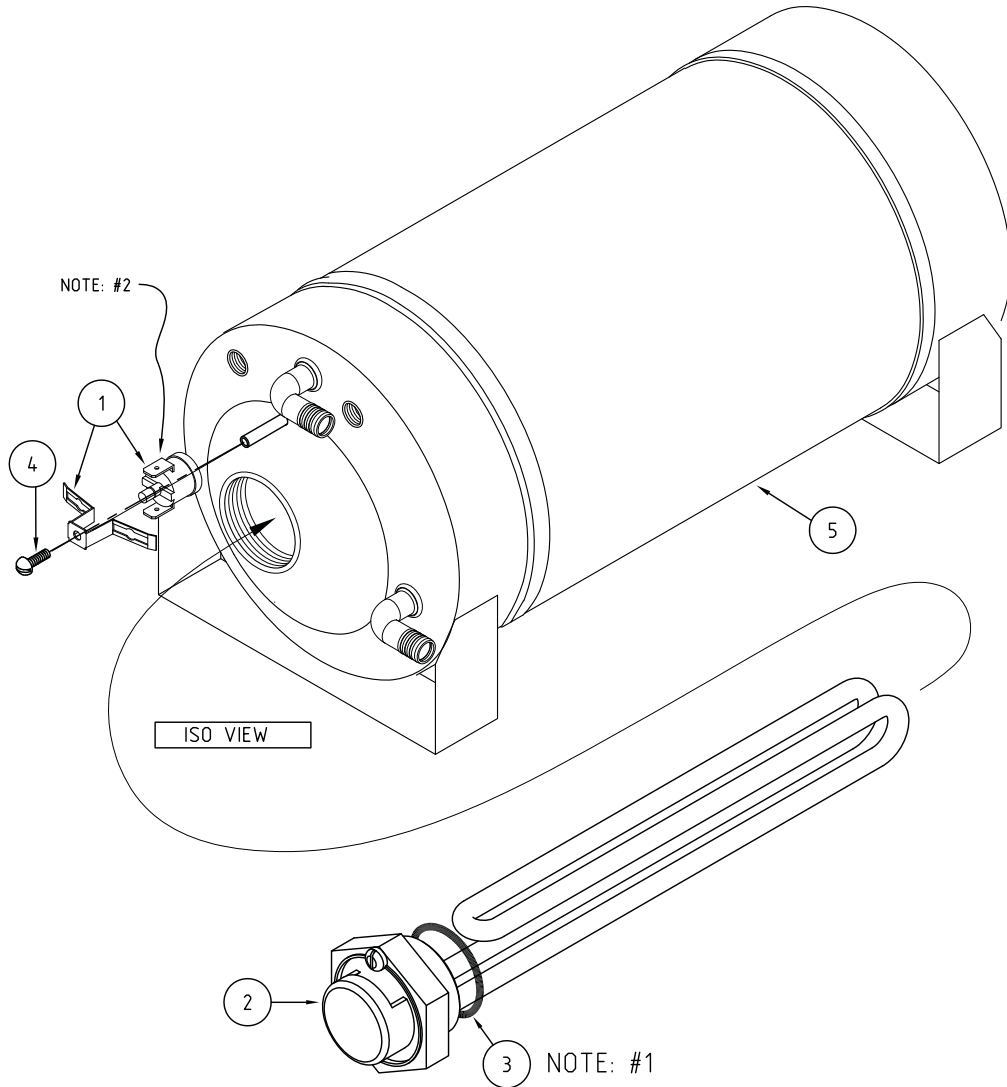
WASHTECH UD6 RINSE ASSEMBLY

UD6 0005 5-03-10 30



3KW ASSY R/TANK 1/2" 1 THERMOSTAT

400 10129 30-10-06 3 A



ITEM	CODE	DESCRIPTION	QTY
1	600 30088	THERMOSTAT TY60/R-95C [with E bracket]	1
2	600 30249	ELEMENT 3kW RINSE	1
3	3006	GASKET ELEMENT 54.0:1.6mm	1
4	600 80052	MS PAN SLOT ZP M3X6.	1
5	400 10114	RINSE TANK NEW SUB ASSY 1/2"	1

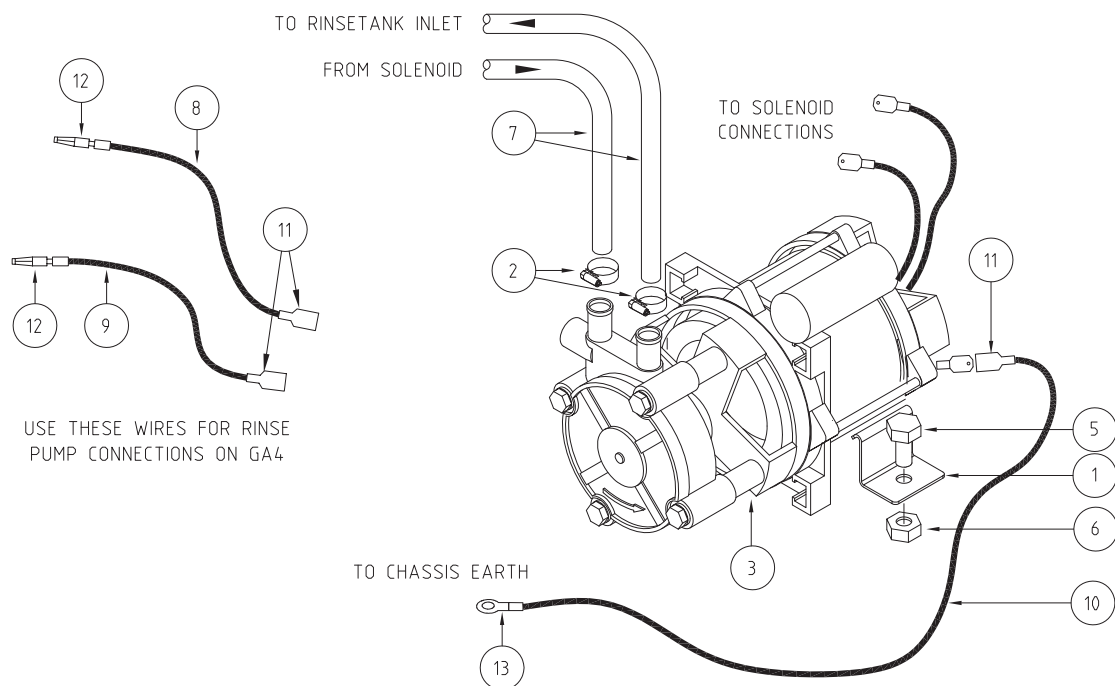
NOTE: 1. USE GRAPHITE JOINING COMPOUND ON BOTH SIDES OF GASKET BEFORE INSERTING ONTO ELEMENT.

NOTE: 2. USE HEAT TRANSFER COMPOUND UNDER THERMOSTAT HEAD.

Appendices

RINSE PUMP KIT TYPE L - P/N 0440021

400 90142-1 31-05-10 1H



PARTS LIST - LGB RINSE PUMP KIT 0440021				
ITEM	CODE	DESCRIPTION	QTY	
1	400 20043	BRACKET -RINSE PUMP	2	
2	ASS06	HOSE CLIP ASS6	3	
3	600 30116	0.46kW RINSE PUMP WITH CAPACITOR 10uf	1	
4	H1909B	DOUBLE ADAPTOR	2	
5	88461	BOLT M6 x 12 S/S HEX	2	
6	8106	NUT M6 HEX SS	2	
7	600 60073	HOSE HOTAL 11mm x 19mm	0.7M	
8	600 30016	WIRE 0.75mm BLACK	0.5M	
9	600 30021	WIRE 0.75mm PINK	0.5M	
10	600 30014	WIRE 0.75mm GREEN/YELLOW	0.5M	
11	H3560	TERMINAL SPADE RED	3	
12	H3919	BULLET MALE RED	2	
13	H4115	RING TERMINAL RED	1	
14	600 60111	NIPPLE 3/4" WASHING MACHINE	1	
15	400 90142	RINSE PUMP KIT RETROFIT DIAGRAM	1	

1. Install rinse pump using the brackets and bolts provided
2. Remove hose from solenoid and reconnect it to rinse pump outlet using hose clamp provided
3. Connect hose #7 supplied in kit from pump inlet to solenoid using hose clamp provided
4. Earth pump on chasis earth stud with green\yellow wire provided in wiring loom.
5. Connect pump wiring according to electrical diagrams provided in service manual or schematic diagram, supplied with the machine.

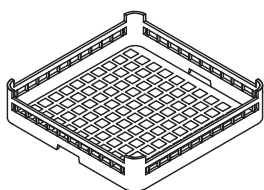
Accessories

WASHTECH UD6 ACCESSORIES

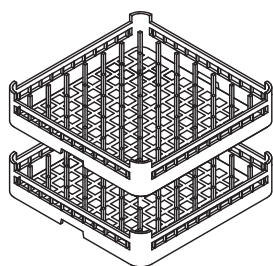
UD6W ACS 06/12/11 3 B



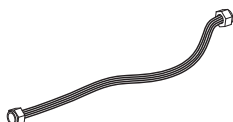
C440201
RUBBER FOOT D.60 X 10



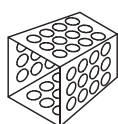
600 70029
CUPRACK CB 500mm X 75mm high



600 70028
DISHRACK P12/18 500mm 18 DISH



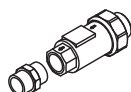
600 60080
HOSE SS 2M



C660503
CUTLERY CONTAINER G



TIMER ADJUSTMENT TOOL



600 60108
DUAL CHECK VALVE

600 60111
3/8-3/8 HEX NIPPLE FITTING

Information supplied in this manual is copyright. No part of this work may be reproduced or copied in any form or by any means, electronic or mechanical without the express permission of the author / publisher.



Distributed In
Australia by

MOFFAT®

740 Springvale Road, Mulgrave 3170, Victoria, Tel 03 9518 3888 Fax 03 9518 3818

Service 1 800 622 216
Parts 1 800 337 963
