

**UD-E**

**Series 7**

**UNDERCOUNTER DISHWASHER**



# Parts Manual

# Spare Parts

---

DESCRIPTION	PART NO
<b>Cabinet &amp; Door</b>	
Door Assembly	207 10015
Door Catch Plunger Assembly	400 10104
Door Seal Gasket (540mm)	600 90064
Front Panel	207 20016
Hinge Guide	400 90113
Rear Safety Panel	207 20021
Rear Wheel	600 90003
<b>Controls &amp; Indicators</b>	
Cord Set 15A	600 30452
Digital Temperature Sensor 500mm	600 30429
Digital Temperature Sensor 1000mm	600 30430
Door Reed Switch	600 30183
LED Diffuser Button	600 30421
Loom LCD Interface 2.5m	600 30426
WI200 Controller PCBA	600 40081
WI200 Keypad Membrane	400 70160
WI200 LCD Interface PCBA	600 30420
<b>Heating Components</b>	
Over Temperature Thermostat	600 30088
Rinse Element 3 KW	600 30249
Rinse Tank Assembly	400 10205
Wash Element 2.5KW	600 30226
<b>Hoses &amp; Fittings</b>	
Hose Clamp 6 mm	ASS 06
Hose Clamp 16 mm	ASS 16
Hose Drain Pump 2.5m	600 60105
Hose Drain Pump Inlet (110mm)	6196
Pressure Switch Hose (530mm)	3067
Rinse Hose (specify length)	600 60073
Wash Pump Inlet Hose	1262
Wash Pump Outlet Hose (75mm)	6195
Lower Wash Connection Hose (65mm)	6196
Upper Wash Hose	400 90012

# Spare Parts

---

DESCRIPTION	PART NO
<b>Pumps &amp; Solenoids</b>	
Detergent Pump	600 30094
Detergent Pump Hose	600 30148
Detergent Squeeze Tube	600 30134
Drain Pump	600 60102
Rinse Aid Injector	600 30324
Solenoid Valve	3342
Wash Pump	3888
<b>Wash Tank Components</b>	
Drain Upstand	400 30301
Filter Assembly	207 10004
Pressure Bell	400 90135
Pressure Bell O Ring	ARP 205
Rinse Arm Assembly	260 10097
Rinse Spindle	400 30073
Scrap Tray	207 20059
Wash Arm Assembly	326 10030
Wash Spindle	400 30072
Wash Spindle Nut	400 30074

**Note:**

For more parts look in the section “Assembly Diagrams”

# Assembly Diagrams

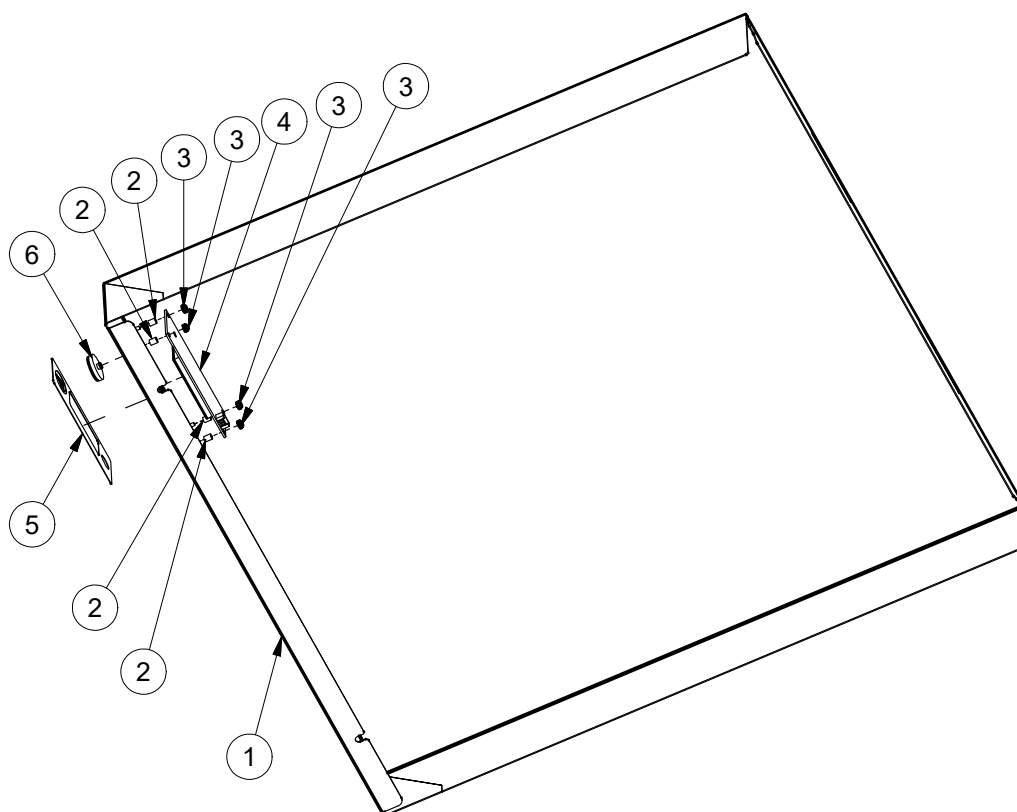
## EU/UD7 CONTROL PANEL ASSEMBLY

207 11043 4/12/2012 REV 1-A

FRONT VIEW



EXPLODED VIEW

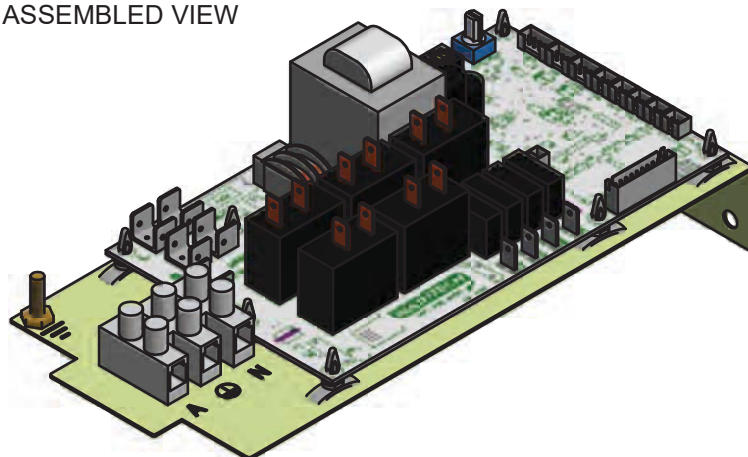


Parts List			
ITEM	PART NUMBER	DESCRIPTION	QTY
1	207 10018	CONTROL PANEL SUB-ASSEMBLY	1
2	600 30450	SPACER RETAINING M3 x 6.35MM	4
3	600 80122	M3 SS HEX NYLON NUT T304	4
4	KIT0440069	LCD INTERFACE PCBA	1
5	KIT0440047	WASHTECH KEYPAD MEMBRANE c/w item	1
6	600 30421	LED DIFFUSER BUTTON	1

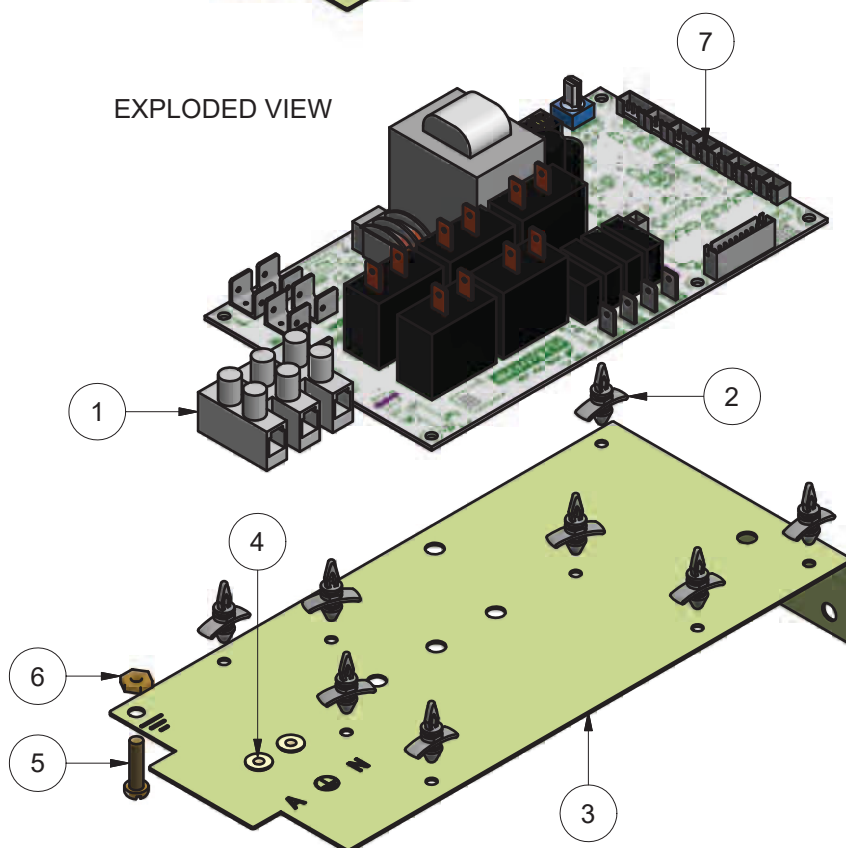
# EP/EU/UD7 WIRING TRAY ASSEMBLY

208 10017 20/11/2012 REV 1-A

ASSEMBLED VIEW



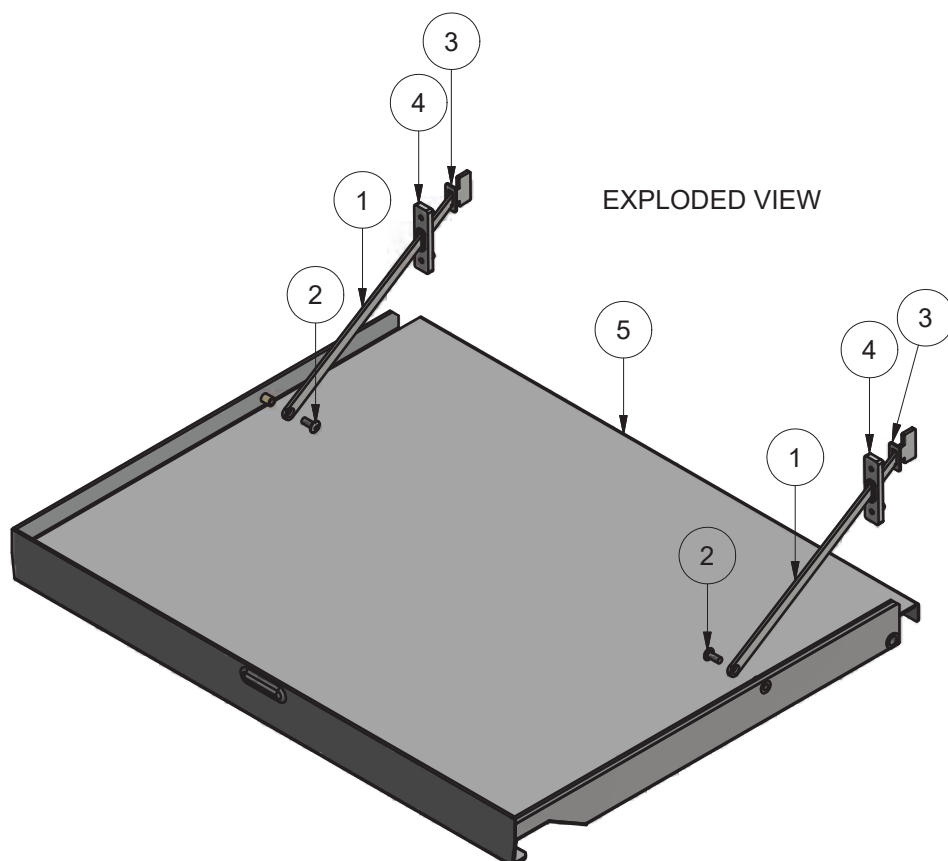
EXPLODED VIEW



Parts List			
ITEM	PART NUMBER	DESCRIPTION	QTY
1	3227	TERMINAL STRIP 4 WAY	1
2	600 30449	PCB SUPPORT NYLON 6.3MM	8
3	208 20005	EP/EU/XP/XU WIRING TRAY	1
4	600 80003	M4 NUTSERT	2
5	8816	MS RH BRASS 3/16 X 3/4	1
6	8151	NUT HX BRASS 3/16" PRESSED	1
7	KIT0440067	ELECTRONICS CONTROLLER KIT V2	1

## EU/ XU/ UD7 DOOR & STAYS ASSEMBLY

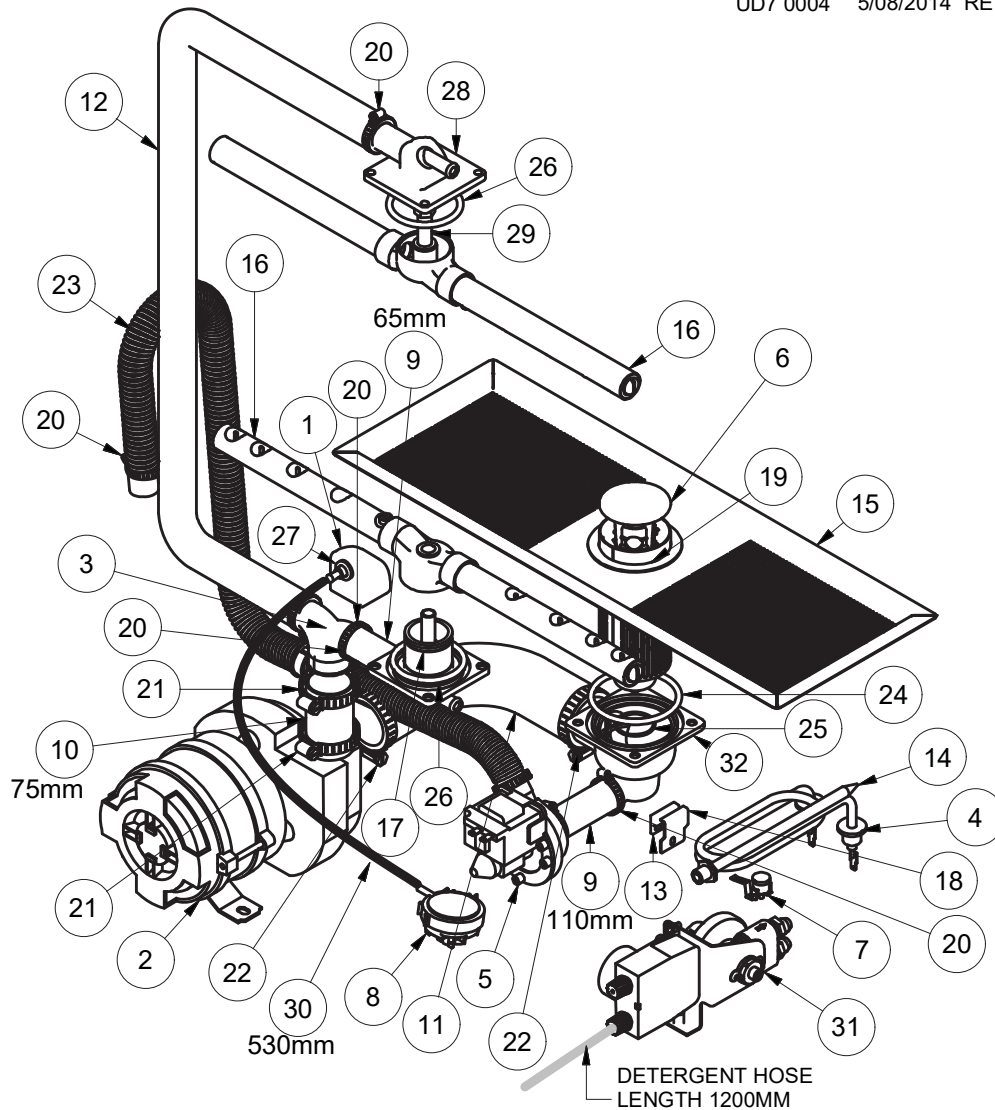
207 10020 23/09/2013 REV 3-A



Parts List			
ITEM	PART NUMBER	DESCRIPTION	QTY
1	207 20054	XU DOOR STAY	2
2	600 80017	M5 x 12 SS TRUSS HEAD SCREW	2
3	278 20066	GLV5\UD5\GL5 DOOR STOP BRKT	2
4	400 90113	HINGE GUIDE	2
5	207 10015	EU/ XU/ UD7 DOOR ASSEMBLY	1

# UD7 WASH SYSTEM

UD7 0004 5/08/2014 REV 3-A

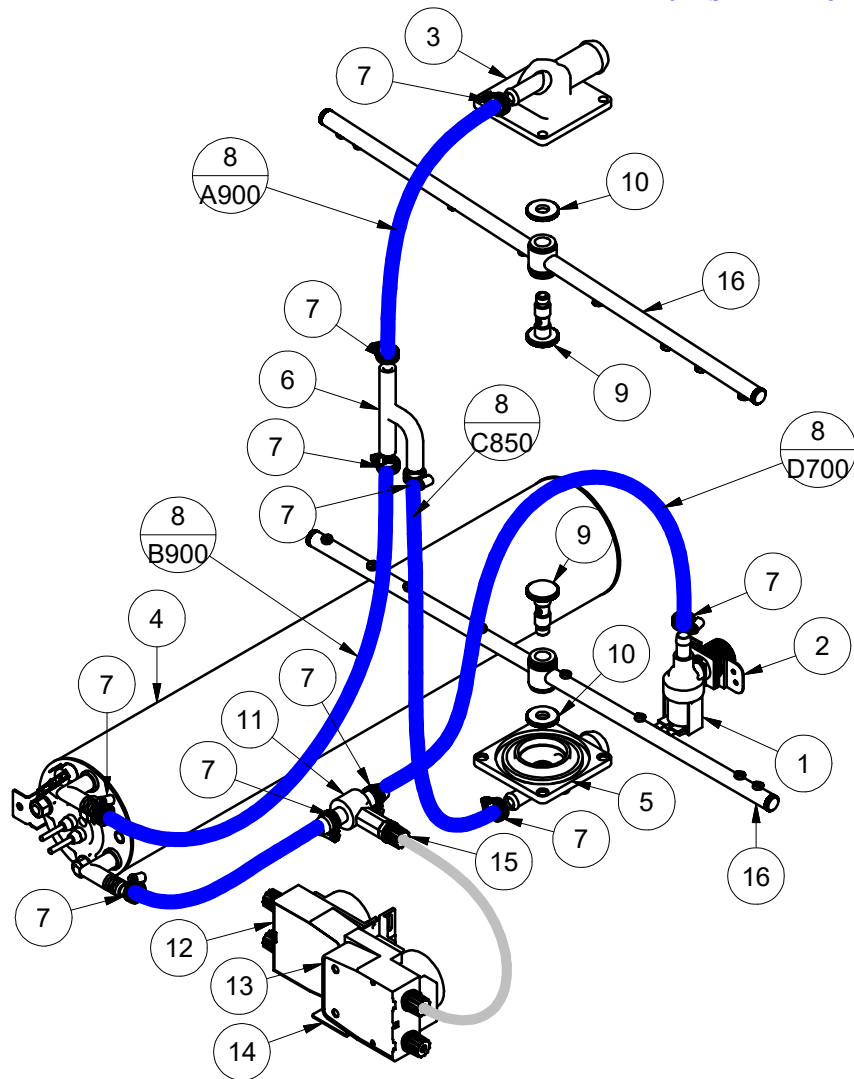


Parts List				Parts List			
ITEM	PART No	DESCRIPTION	QTY	ITEM	PART No	DESCRIPTION	QTY
1	400 90135	PRESSURE BELL CASTING	1	17	400 10216	WASH TEE ASSY LOWER	1
2	3888	PUMP WASH FIR 0.5HP	1	18	400 20157	DOOR SWITCH CLAMP BRKT	1
3	400 90069	38mm x 25mm REDUCER TEE	1	19	207 10004	XU/eU/UD Filter	1
4	600 30226	ELEMENT 2500W 240V	1	20	ASS16	HOSE CLAMP	12
5	600 60102	DRAIN PUMP B20-6	1	21	ASS24	HOSE CLAMP ASS24	2
6	400 30301	UD7 GREY UPSTAND w HOLES	1	22	ASS28	HOSE CLAMP ASS28	2
7	600 30088	TSTAT TY60/R-110C	1	23	600 60105	HOSE DRAIN PUMP 2.5M	1
8	600 30478	PRESSURE SWITCH 50/20MM	1	24	ARP336	O-RING ARP336	1
9	6196	HOSE 25mm 2 PLY RADIATOR	2	25	ARP38x2	O-RING ARP38x2 N70	1
10	6195-70	HOSE 38mm 2 PLY RADIATOR	1	26	ARP333	O-RING ARP333	2
11	1262	UHB44 W/PUMP INLET HOSE	1	27	ARP205	O-RING 11IDx18OD	1
12	400 90012	HOSE UPPER WASH	1	28	400 90077	GLV/UD/UDC WASH TEE	1
13	600 30183	REED SWITCH STEM	1	29	400 30072	M2 WASH SPINDLE	1
14	400 10065	ASSY THERM PROBE POCKET	1	30	3067	HOSE PRESSURE SWITCH	1
15	207 20059	UD7 SCRAP TRAY	1	31	0440014	RINSE AID HYDRAULIC KIT	1
16	326 10030	ASSY SS WASH ARM	2	32	400 30202	GLV/UD WASH SUMP CASTING	1

\* 3892 Wash Pump Capacitor 12.5uF (not shown)

# UD7 (W) RINSE SYSTEM

UD7 0003 11/04/2016 REV 3-E  
FROM SERIAL NUMBER 144621

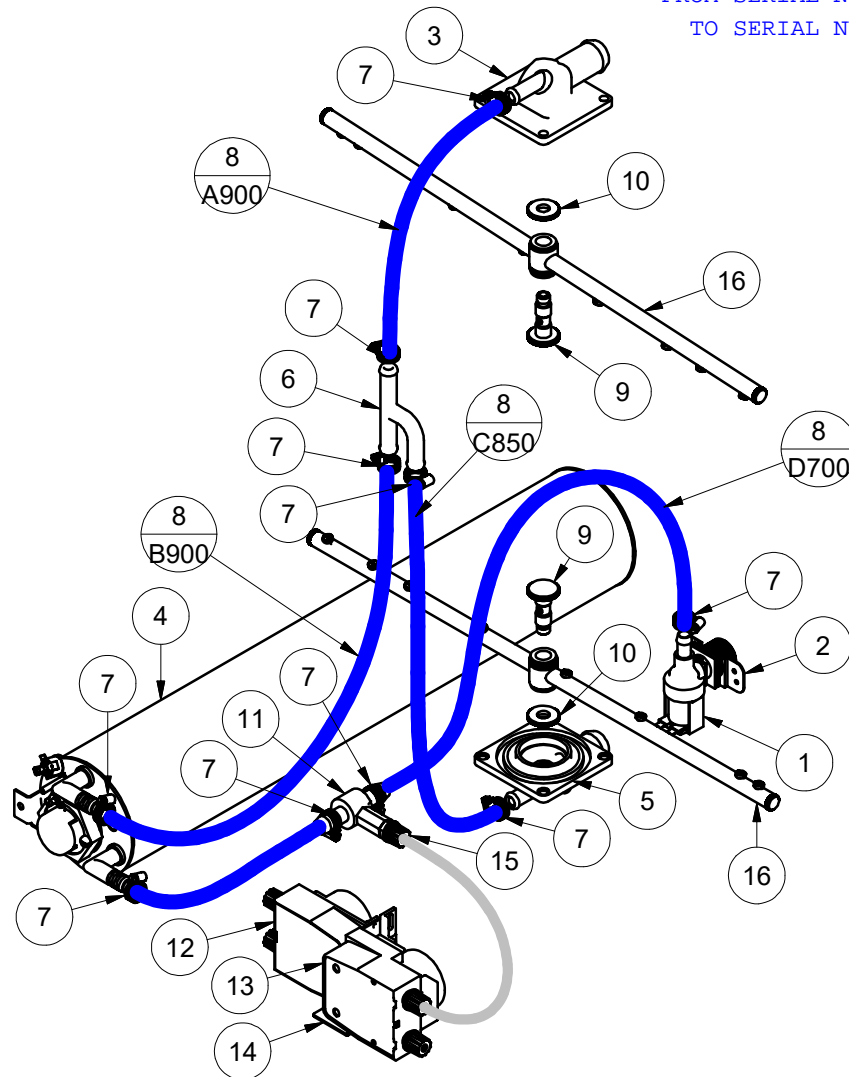


Parts List			
ITEM	PART NUMBER	DESCRIPTION	QTY
1	3342	SOLENOID VALVE 1 WAY	1
2	1247	INLET SOLENOID SUPPORT	1
3	400 90077	GLVUD\UDC WASH TEE	1
4	400 10243	XU2/UD7 RINSE TANK 550MM ASSEMBLY V2	1
5	400 30194	UE(5)/M1(3) LOWER WASH TEE	1
6	600 60230	HOSE TEE SS 12 X 12 X 12MM	1
7	ASS05	HOSE CLAMP	10
8	600 60073	HOSE HOTOTAL 11mm x 19mm	5
9	400 30339	RINSE SPINDLE SHORT	2
10	400 30074	NUT M2 WASH SPINDLE	2
11	280 30003	TEE BRACTON RINSE AID	1
12	600 30094	PERI PUMP 1.5L/H SEKO-KIT	1
13	600 30480	PERI PUMP RA ADJUSTABLE	1
14	400 20182	PERISTALTIC PUMPS BRACKET	1
15	@600 30480	NON RETURN VALVE	1
16	400 10230	UD/UL/M2 RINSE ARM ASSY	2

# UD7 (W) RINSE SYSTEM

UD7 0003 21/04/2015 REV 3-D

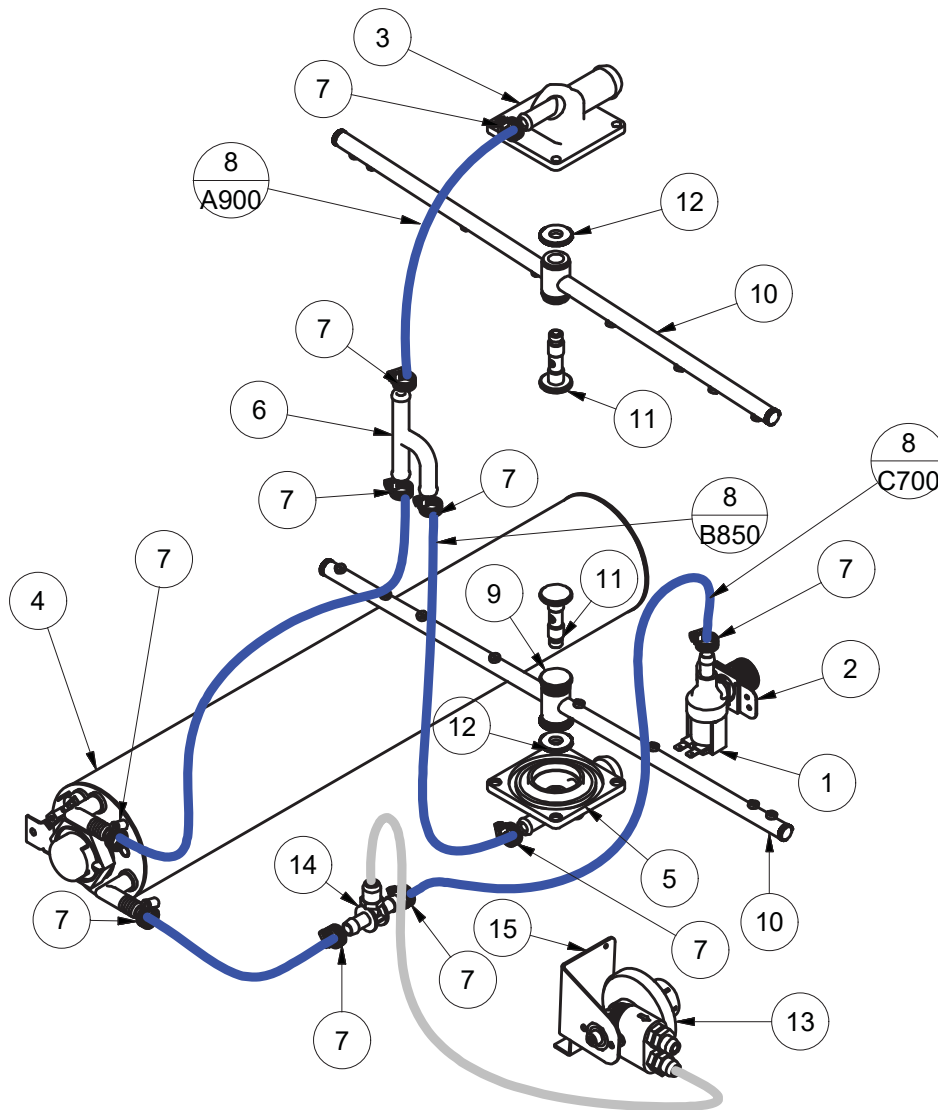
FROM SERIAL NUMBER 139527  
TO SERIAL NUMBER 144620



Parts List			
ITEM	PART NUMBER	DESCRIPTION	QTY
1	3342	SOLENOID VALVE 1 WAY	1
2	1247	INLET SOLENOID SUPPORT	1
3	400 90077	GLVUD\UDC WASH TEE	1
4	400 10205	RINSE TANK SS 550MM ASSEMBLY	1
5	400 30194	UE(5)/M1(3) LOWER WASH TEE	1
6	400 90076	SS RINSE TEE	1
7	ASS05	HOSE CLAMP	10
8	600 60073	HOSE HOTOTAL 11mm x 19mm	5
9	400 30339	RINSE SPINDLE SHORT	2
10	400 30074	NUT M2 WASH SPINDLE	2
11	280 30003	TEE BRACTON RINSE AID	1
12	600 30094	PERI PUMP 1.5L/H SEKO-KIT	1
13	600 30480	PERI PUMP RA ADJUSTABLE	1
14	400 20182	PERISTALTIC PUMPS BRACKET	1
15	@600 30480	NON RETURN VALVE	1
16	400 10230	UD/UL/M2 RINSE ARM ASSY	2

# UD7 (W) RINSE SYSTEM

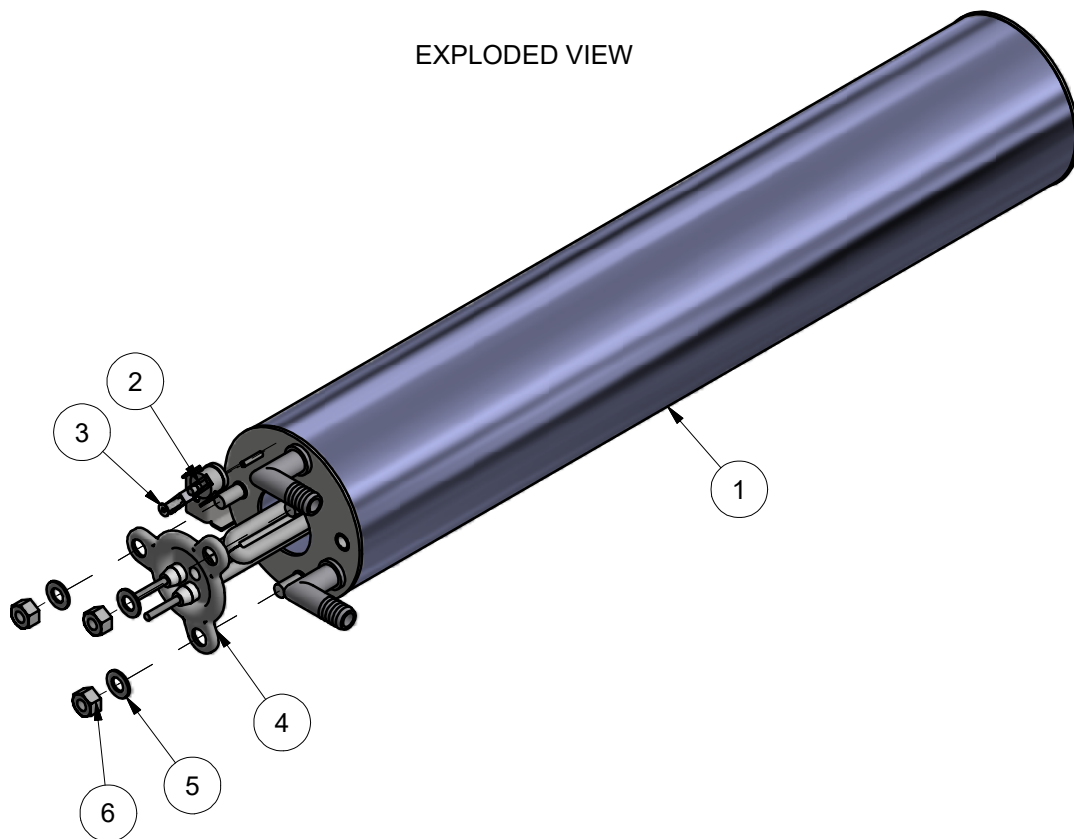
UD7 0003 6/08/2014 REV 3-A  
TO SERIAL NUMBER 139526



Parts List			
ITEM	PART NUMBER	DESCRIPTION	QTY
1	3342	SOLENOID VALVE 1 WAY	1
2	1247	INLET SOLENOID SUPPORT	1
3	400 90077	GLVUD\UDC WASH TEE	1
4	400 10205	RINSE TANK SS 550MM ASSEMBLY	1
5	400 30194	UE(5)/M1(3) LOWER WASH TEE	1
6	400 90076	SS RINSE TEE	1
7	ASS06	HOSE CLAMP	10
8	600 60073	HOSE HOTOTAL 11mm x 19mm	5
9	260 10098	UD-M2 RINSE ARM ASSY	1
10	260 10097	UD-PW1 RINSE ARM SUB ASSY	2
11	400 30073	M2 RINSE SPINDLE	2
12	400 30074	NUT M2 WASH SPINDLE	2
13	600 30324	RINSE AID INJECTOR	1
14	@600 30324	DETERGENT/RINSE AID TEE	1
15	400 20180	CHEMICAL PUMPS BRACKET	1

## XU2/UD7 RINSE TANK 550MM ASSEMBLY V2

400 10243 11/04/2016 REV 3-A  
FROM SERIAL NUMBER 144621



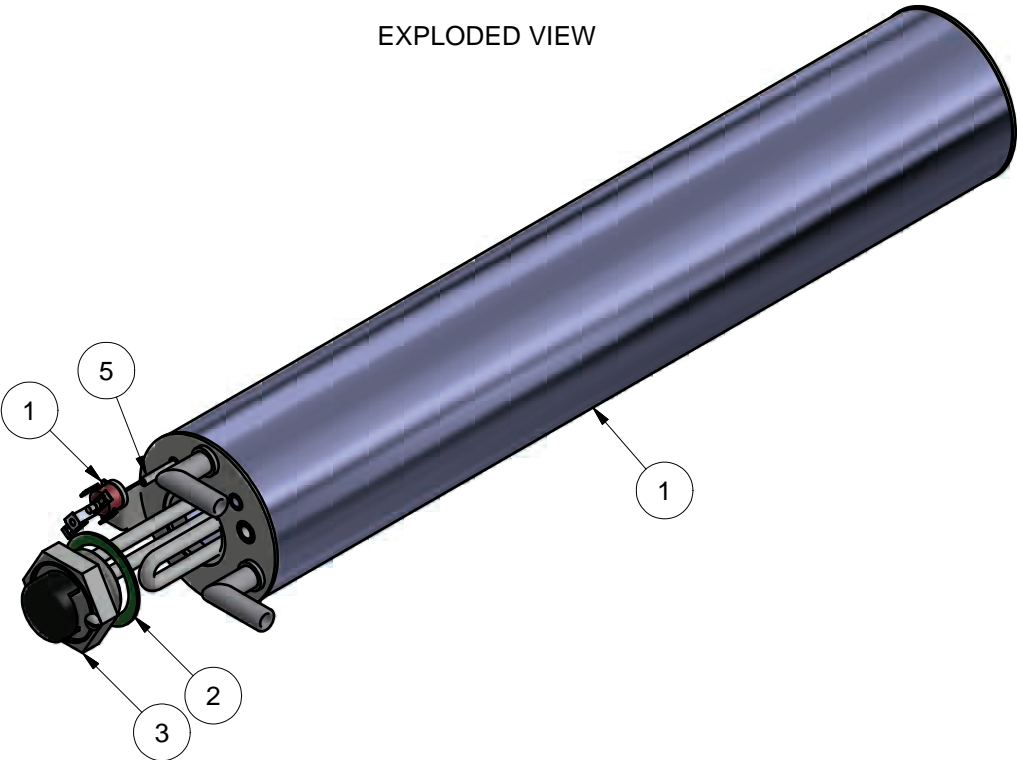
Parts List			
ITEM	PART NUMBER	DESCRIPTION	QTY
1	400 10242	XU2/UD7 RINSE TANK SS 550MM SUB ASSY V2	1
2	600 30088	TSTAT TY60/R-110C [WITH E BKT]	1
3	600 80064	STANDOFF M3 x 12	1
4	600 30495	Element 3kW Single Blade Rinse	1
5	600 80022	WASHER FL SS 304 M8x16x1.2mm	3
6	600 80063	NUT NYLOC SS M8	3

# RINSE TANK SS 550MM ASSEMBLY

400 10205 6/09/2013 REV 3-C

TO SERIAL NUMBER 144620

EXPLODED VIEW

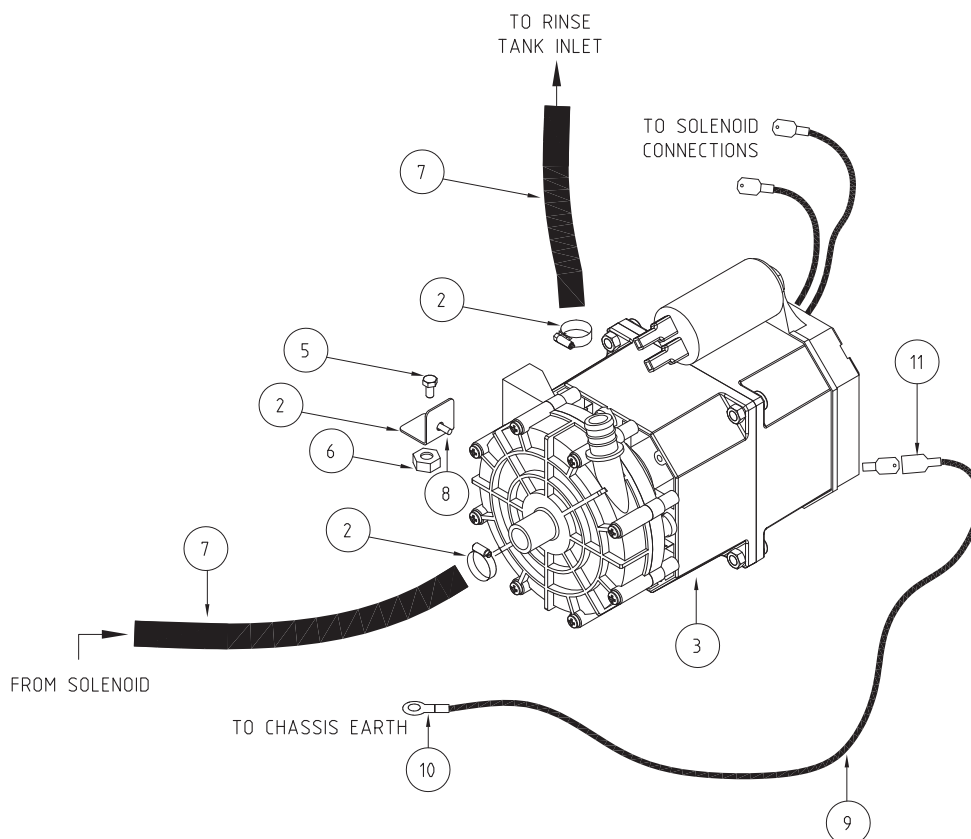


Parts List			
ITEM	PART NUMBER	DESCRIPTION	QTY
1	400 10200	RINSE TANK SS 550MM SUB ASSEMBLY	1
2	3006	ELEMENT GASKET	1
3	600 30249	3KW ELEMENT	1
4	600 30088	TSTAT TY60/R-110C [WITH E BKT]	1
5	600 80064	STANDOFF M3 x 12	1

# Appendices

## RINSE PUMP KIT TYPE L - P/N 0440021

400 90142-1 31-05-10 1H



PARTS LIST - LGB RINSE PUMP KIT 0440021			
ITEM	CODE	DESCRIPTION	QTY
1	273 20013	BRACKET -RINSE PUMP	2
2	ASS06	HOSE CLIP ASS6	2
3	600 30400	0.25 kW RINSE PUMP WITH CAPACITOR 5uf	1
4	H1909B	DOUBLE ADAPTOR	2
5	88461	BOLT M6 x 12 S/S HEX	1
6	8106	NUT M6 HEX SS	1
7	600 60073	HOSE HOTAL 11mm x 19mm	0.7M
8	8801	MS PAN POZI ZP M4x12	1
9	600 30014	WIRE 0.75mm GREEN/YELLOW	0.5M
10	H4115	RING TERMINAL RED	1
11	H3560	TERMINAL SPADE RED	1
12	400 90142	RINSE PUMP KIT RETROFIT DIAGRAM	1

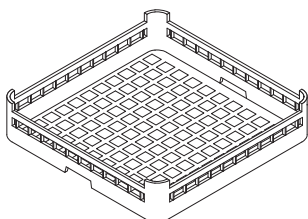
1. Install rinse pump using the bracket and bolts provided
2. Remove hose from solenoid and reconnect it to rinse pump outlet using hose clamp provided
3. Connect hose #7 supplied in kit from pump inlet to solenoid using hose clamp provided
4. Earth pump on chasis earth stud with green\yellow wire provided in wiring loom.
5. Connect pump wiring according to electrical diagrams provided in service manual or schematic diagram, supplied with the machine.

# Accessories

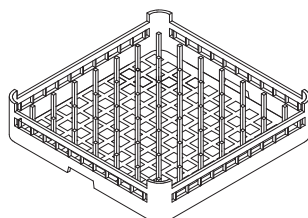
## WASHTECH UD ACCESSORIES

---

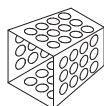
UD7 ACS 19/19/13 1A



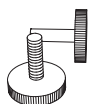
**600 70029**  
**CUPRACK CB 500mm X 75mm high**



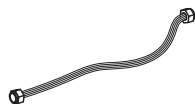
**600 70028**  
**DISHRACK P12/18 500mm 18 DISH**



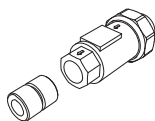
**C660503**  
**CUTLERY CONTAINER G**



**C440201**  
**RUBBER FOOT D.60 X 10**



**600 60080**  
**HOSE SS 2M**



**400 10118**  
**DUAL CHECK VALVE ASSY**

Information supplied in this manual is copyright. No part of this work may be reproduced or copied in any form or by any means, electronic or mechanical without the express permission of the author / publisher.



Distributed In  
Australia by

**MOFFAT®**

740 Springvale Road, Mulgrave 3170, Victoria, Tel 03 9518 3888 Fax 03 9518 3818

Service 1 800 622 216  
Parts 1 800 337 963

