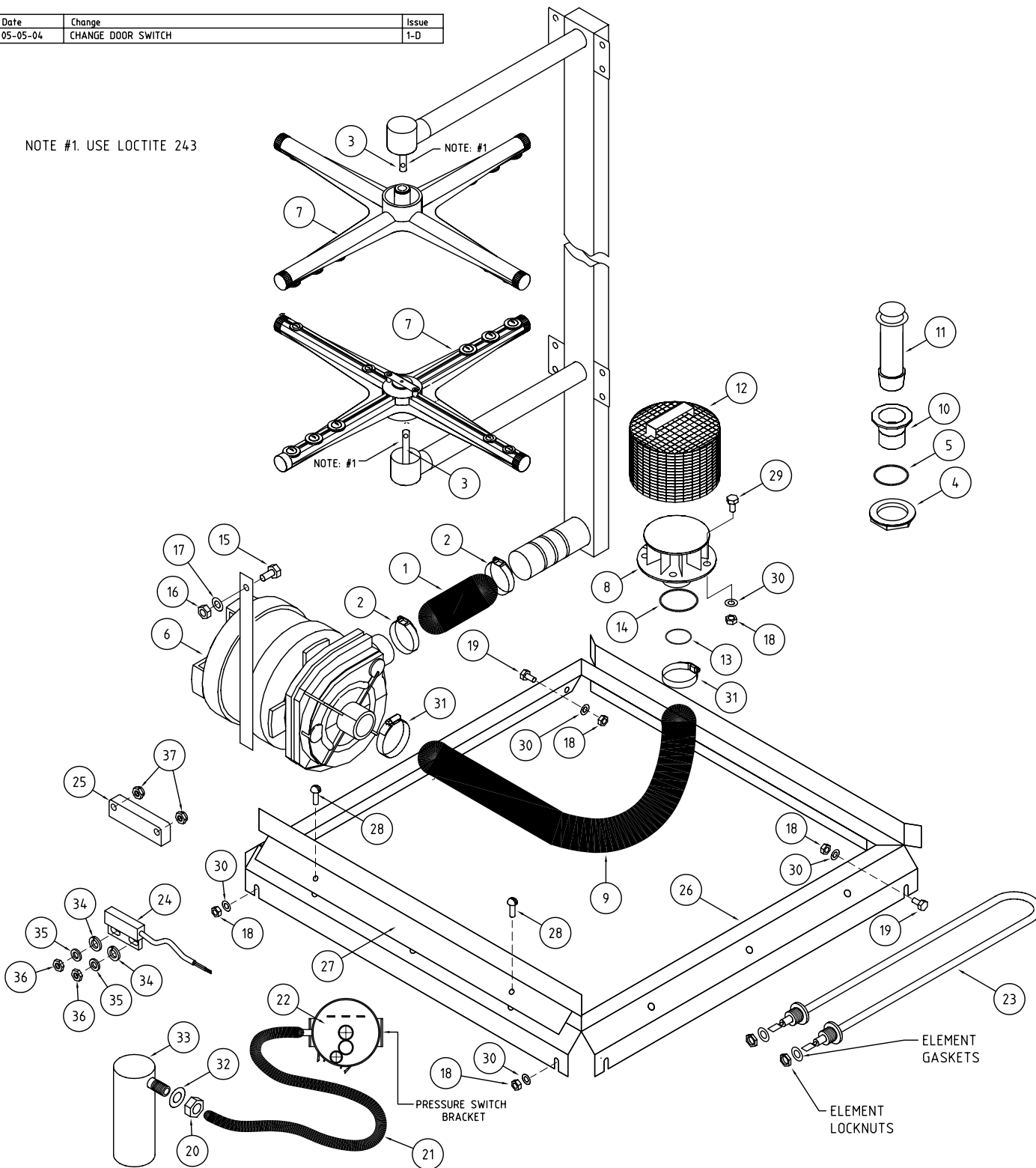


Date	Change	Issue
05-05-04	CHANGE DOOR SWITCH	1-D

NOTE #1. USE LOCTITE 243



ITEM	CODE	DESCRIPTION	QTY
1	325 90001	HOSE OUTLET M2 (38mm x 200mm)	1
2	ASS24	HOSECLIP ASS24	2
3	400 30000	SPINDLE M1/M2	2
4	6037	BACKNUT 126x40mm	1
5	1896	DRAIN WASTE GASKET	1
6	3904	PUMP WASH Mz 1HP	1
7	C420526	PLASTIC WASH/RINSE ARM	2
8	C160603	PUMP INLET FLANGE	1
9	24.38210	HOSE INLET M2	1
10	C160301	DRAIN OUTLET 1.1/2" 107063	1
11	C180704	OVERFLOW PIPE DRAIN UPSTAND	1
12	1238	WASH INLET FILTER 100mm CIRC	1
13	ARP229	O-RING 'ARP229'	1
14	ARP241	O-RING 'ARP241'	1
15	600 80030	MS HX SS 304 M8X20	1
16	600 80023	NUT SS 304 HEX M8	1
17	600 80022	WASHER FL SS 304 M8 x 16 x 1.25	1
18	8106	NUT Hx SS M6	8

ITEM	CODE	DESCRIPTION	QTY
19	88461	MS Hx SS M6 x 12	2
20	600 80009	NUT SS 304 HEX M10	1
21	30675	HOSE M2/AL PRESSURE SWITCH	1
22	30634	SWITCH M2 PRESSURE	1
23	600 30159	ELEMENT WASH 2.5KW STRAIGHT	1
24	600 30183	REED SWITCH STEM	1
25	600 30182	MAGNETIC UNIT	1
26	1557	ASSY M2 RACKSLIDE	1
27	1560	BRACKET M2 RACK SLIDE	1
28	600 80017	MS TRUSS HEAD M5 x 12	2
29	600 80015	MS Hx SS M6 x 16	4
30	8566	WASHER SPRING SS 1/4"	8
31	ASS36	ASS36 HOSE CLIP	2
32	400 90010	GASKET	1
33	30663	PRESSURE BELL	1
34	600 80081	M4 WASHER 304	2
35	8567	WASHER SPRING SS 304 MS	2
36	8112	NUT HEX SS 304 M4	2
37	600 80079	NYLOC NUT M4 304	2

UNIT 1, 27 ALLGAS STREET, SLACKS CREEK,
QUEENSLAND 4127, AUSTRALIA
PH: (07) 3290-2877 FX: (07) 3290-2974

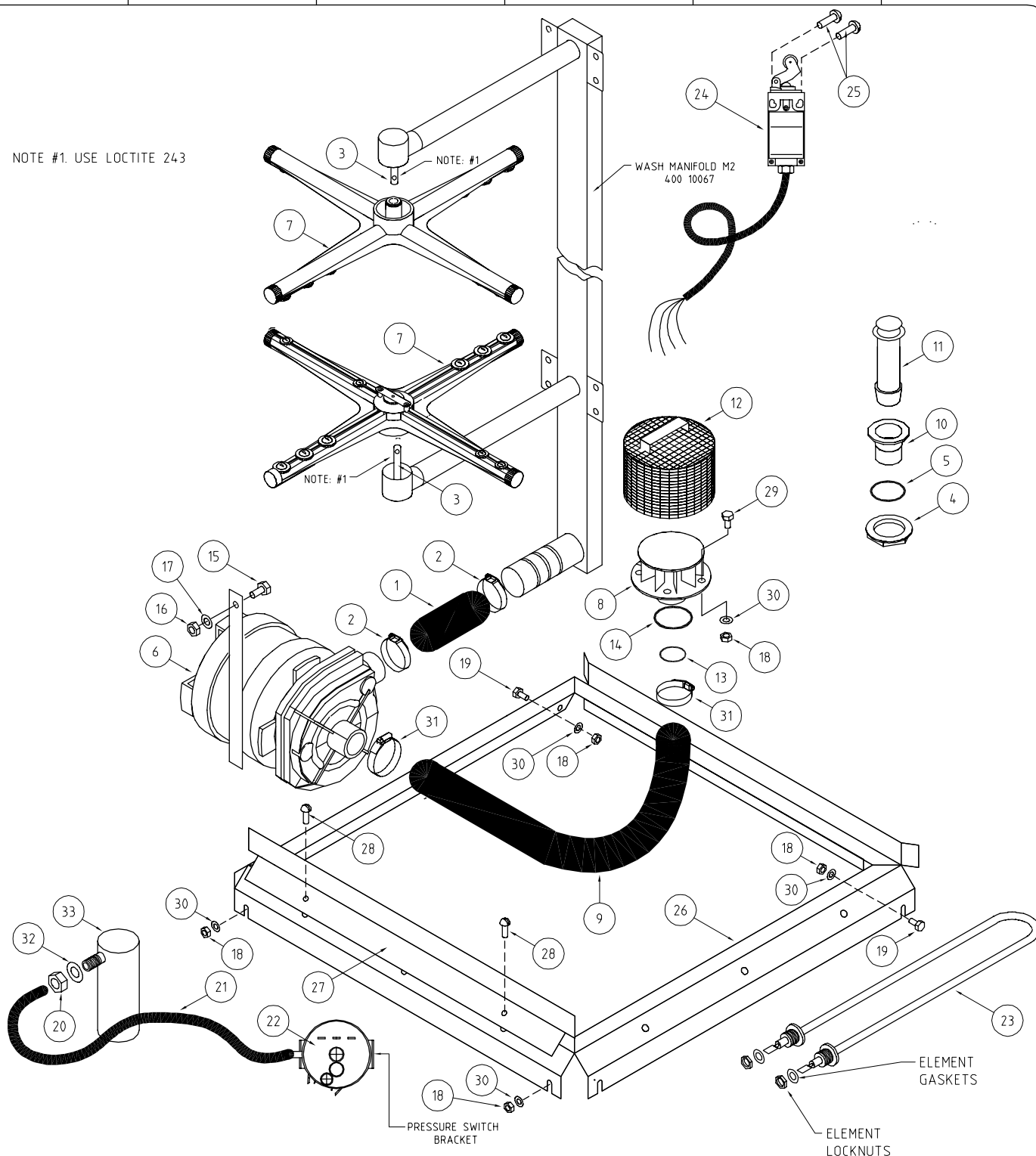
Washtech ©

9 CORBAN AVENUE, PO Box 21-342
HENDERSON, AUCKLAND, NEW ZEALAND
PH: (09) 837-2372 FX: (09) 837-0880

Drawing No. M220002	ISSUE NO. 1	Rev. D	Description: M2 (2) WASH SYSTEM (WASHTECH)	Scale NTS	Units mm	Proj. 	Tolerance: REF	Checked by:
	Issue Date: 05-05-04			FINISH:				
	Drawn by: M.K.H			Material:				
	©Washtech Ltd, October 2015							

APPROVED
Alexander Jouk

Drawing No:
M220002



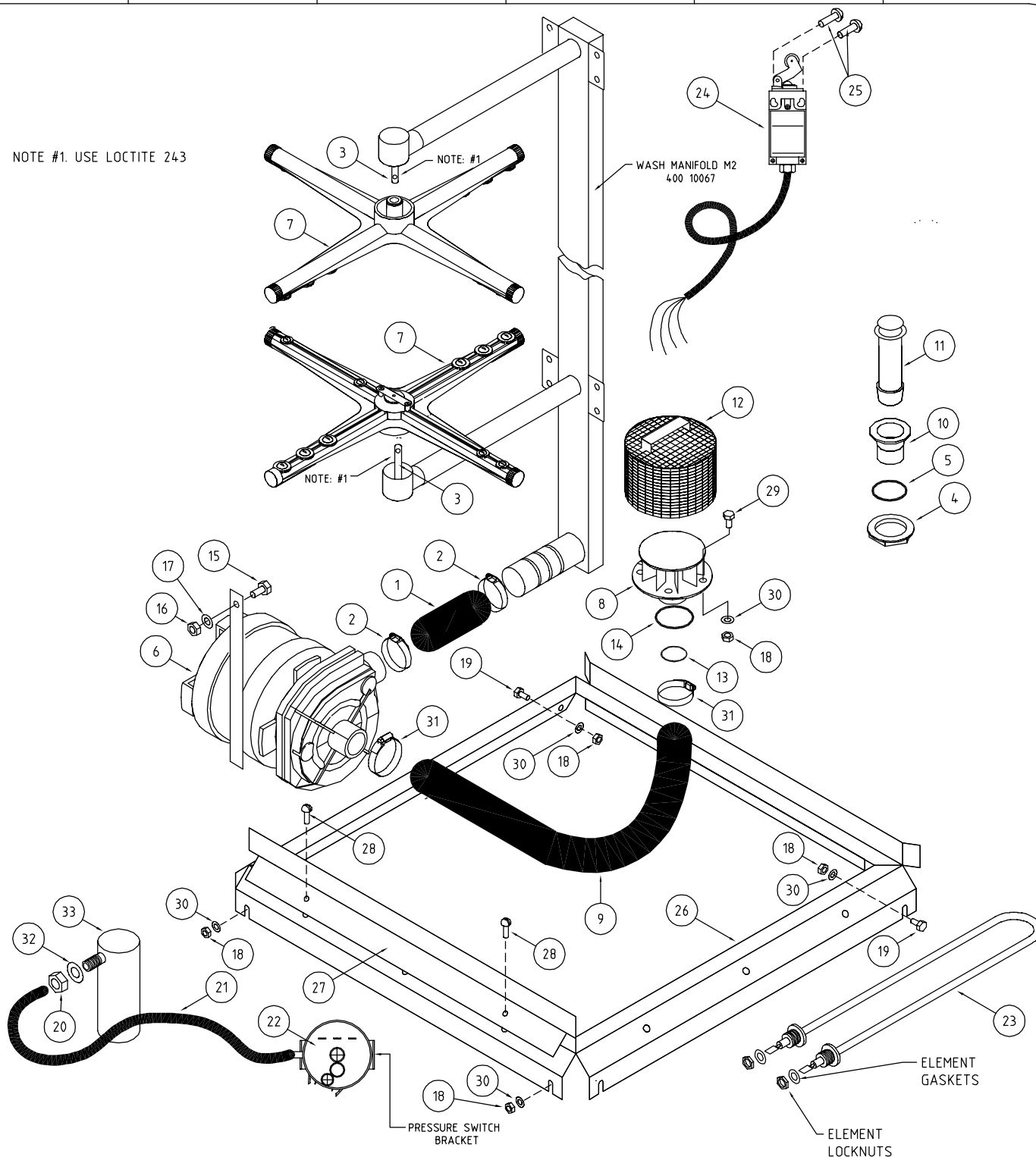
ITEM	CODE	DESCRIPTION	QTY
19	88461	MS Hx SS M6 x 12	2
20	600 80009	NUT SS 304 HEX M10	1
21	30675	HOSE M2/AL PRESSURE SWITCH	1
22	30634	SWITCH M2 PRESSURE	1
23	600 30159	ELEMENT WASH 25KW STRAIGHT	1
24	600 30092	PASS THROUGH DOOR SWITCH	1
25	88021	MS PAN POZ1 ZP M4 x 30	2
26	1557	ASSY M2 RACKSLIDE	1
27	1560	BRACKET M2 RACK SLIDE	1
28	600 80017	MS TRUSS HEAD M5 x 12	1
29	600 80015	MS Hx SS M6 x 16	4
30	8566	WASHER SPRING SS 1/4"	8
31	ASS36	ASS36 HOSE CLIP	2
32	400 90010	GASKET	1
33	30663	PRESSURE BELL	1

Ian Mcleod

9 CORBAN AVENUE, PO Box 21-342
HENDERSON, AUCKLAND, NEW ZEALAND
PH: (09) 837-2372 FX: (09) 837-0880

Drawing No:
M220002

NOTE #1. USE LOCTITE 243



ITEM	CODE	DESCRIPTION	QTY
1	325 90001	HOSE OUTLET M2 (38mm x 200mm)	1
2	ASS24	HOSECLIP ASS24	2
3	400 30000	SPINDLE M1/M2	2
4	6037	BACKNUT 126x40mm	1
5	1896	DRAIN WASTE GASKET	1
6	3904	PUMP WASH Mz 1HP	1
7	C420526	PLASTIC WASH/RINSE ARM	2
8	C160603	PUMP INLET FLANGE	1
9	24.38210	HOSE INLET M2	1
10	C160301	DRAIN OUTLET 1.1/2" 107063	1
11	C180704	OVERFLOW PIPE DRAIN UPSTAND	1
12	1238	WASH INLET FILTER 100mm CIRC	1
13	ARP229	O-RING 'ARP229'	1
14	ARP241	O-RING 'ARP241'	1
15	600 80030	MS HX SS 304 M8X20	1
16	600 80023	NUT SS 304 HEX M8	1
17	600 80022	WASHER FL SS 304 M8 x 16 x 125	1
18	8106	NUT Hx SS M6	8

ITEM	CODE	DESCRIPTION	QTY
19	88461	MS Hx SS M6 x 12	2
20	600 80009	NUT SS 304 HEX M10	1
21	30675	HOSE M2/AL PRESSURE SWITCH	1
22	30634	SWITCH M2 PRESSURE	1
23	600 30159	ELEMENT WASH 2.5KW STRAIGHT	1
24	400 60001	ASSY P/T DOOR SWITCH	1
25	88021	MS PAN POZ1 ZP M4 x 30	2
26	1557	ASSY M2 RACKSLIDE	1
27	1560	BRACKET M2 RACK SLIDE	1
28	600 80017	MS TRUSS HEAD M5 x 12	2
29	600 80015	MS Hx SS M6 x 16	4
30	8566	WASHER SPRING SS 1/4"	8
31	ASS36	ASS36 HOSE CLIP	2
32	400 90010	GASKET	1
33	30663	PRESSURE BELL	1

UNIT 1, 27 ALLGAS STREET, SLACKS CREEK,
QUEENSLAND 4127, AUSTRALIA
PH: (07) 3290-2877 FX: (07) 3290-2974

Washtech

9 CORBAN AVENUE, PO Box 21-342
HENDERSON, AUCKLAND, NEW ZEALAND
PH: (09) 837-2372 FX: (09) 837-0880

APPROVED

Alexander Jouk

ISSUE NO. **1**
Rev. **B**
Issue Date:
08-04-02
Drawn by:
M.K.H.

Description:
M2 (2) WASH SYSTEM (WASHTECH)

©Washtech Ltd, October 2015

Scale
NTS

Units:
mm

Proj:
REF

Tolerance:
REF

Checked by:

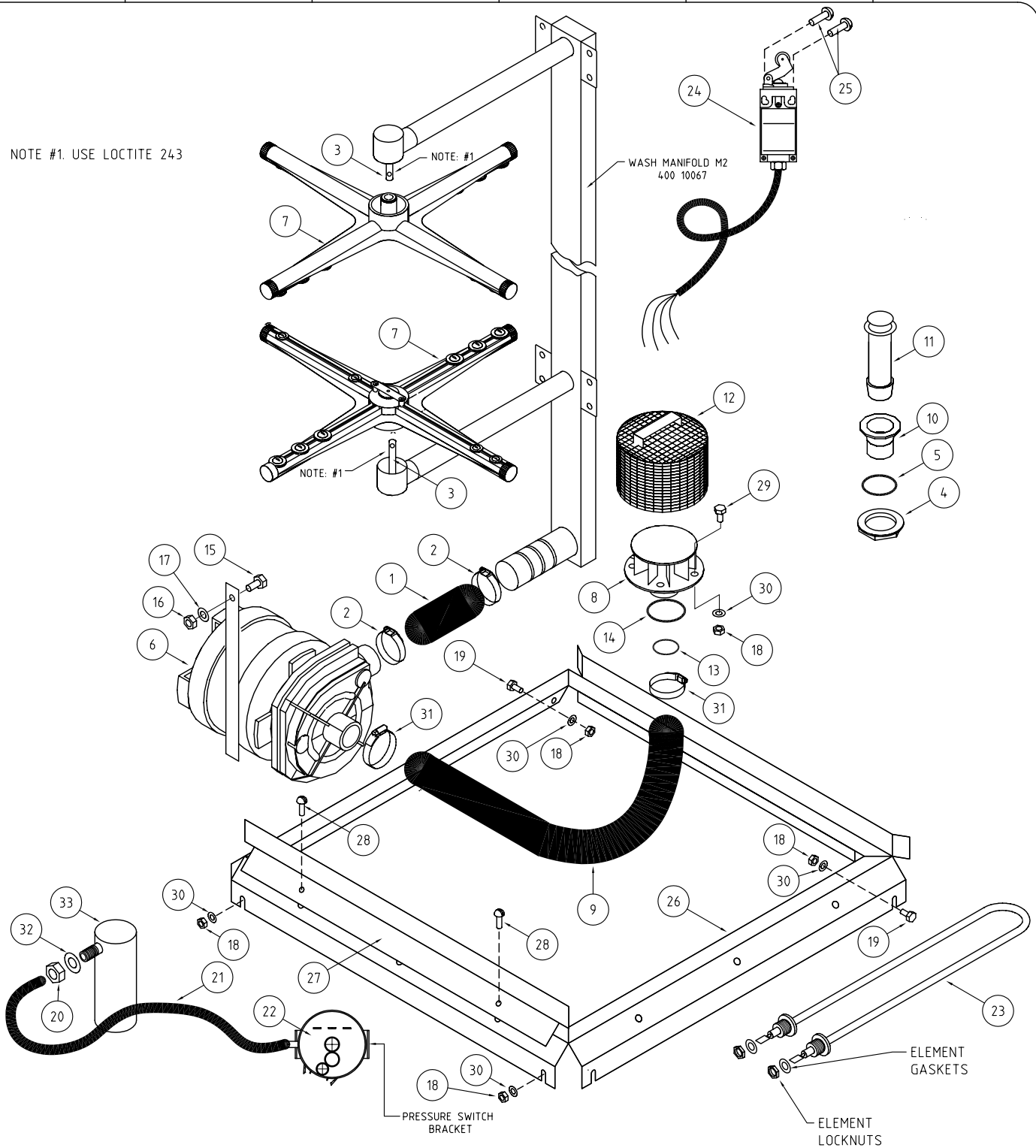
FINISH:

Material:

DO NOT SCALE - IF IN DOUBT ASK DWG SIZE A3 (390x265)

Drawing No:
M220002

NOTE #1. USE LOCTITE 243



ITEM	CODE	DESCRIPTION	QTY
1	325 90001	HOSE OUTLET M2 (38mm x 200mm)	1
2	ASS24	HOSECLIP ASS24	2
3	400 30000	SPINDLE M1/M2	2
4	6037	BACKNUT 126x40mm	1
5	1896	DRAIN WASTE GASKET	1
6	3904	PUMP WASH Mz 1HP	1
7	C420526	PLASTIC WASH/RINSE ARM	2
8	C160603	PUMP INLET FLANGE	1
9	24.38210	HOSE INLET M2	1
10	C160301	DRAIN OUTLET 1.1/2" 107063	1
11	C180704	OVERFLOW PIPE DRAIN UPSTAND	1
12	1238	WASH INLET FILTER 100mm CIRC	1
13	ARP229	O-RING 'ARP229'	1
14	ARP241	O-RING 'ARP241'	1
15	600 80030	MS HX SS 304 M8X20	1
16	600 80023	NUT SS 304 HEX M8	1
17	600 80022	WASHER FL SS 304 M8 x 16 x 1.25	1
18	8106	NUT Hx SS M6	8

ITEM	CODE	DESCRIPTION	QTY
19	88461	MS Hx SS M6 x 12	2
20	600 80009	NUT SS 304 HEX M10	1
21	30675	HOSE M2/AL PRESSURE SWITCH	1
22	30634	SWITCH M2 PRESSURE	1
23	30071	ELEMENT WASH 18KW STRAIGHT	1
24	400 60001	ASSY P/T DOOR SWITCH	1
25	88021	MS PAN POZ1 ZP M4 x 30	2
26	1557	ASSY M2 RACKSLIDE	1
27	1560	BRACKET M2 RACK SLIDE	1
28	600 80017	MS TRUSS HEAD M5 x 12	2
29	600 80015	MS Hx SS M6 x 16	4
30	8566	WASHER SPRING SS 1/4"	8
31	ASS36	ASS36 HOSE CLIP	2
32	400 90010	GASKET	1
33	30663	PRESSURE BELL	1

UNIT 1, 27 ALLGAS STREET, SLACKS CREEK,
QUEENSLAND 4127, AUSTRALIA
PH: (07) 3290-2877 FX: (07) 3290-2974

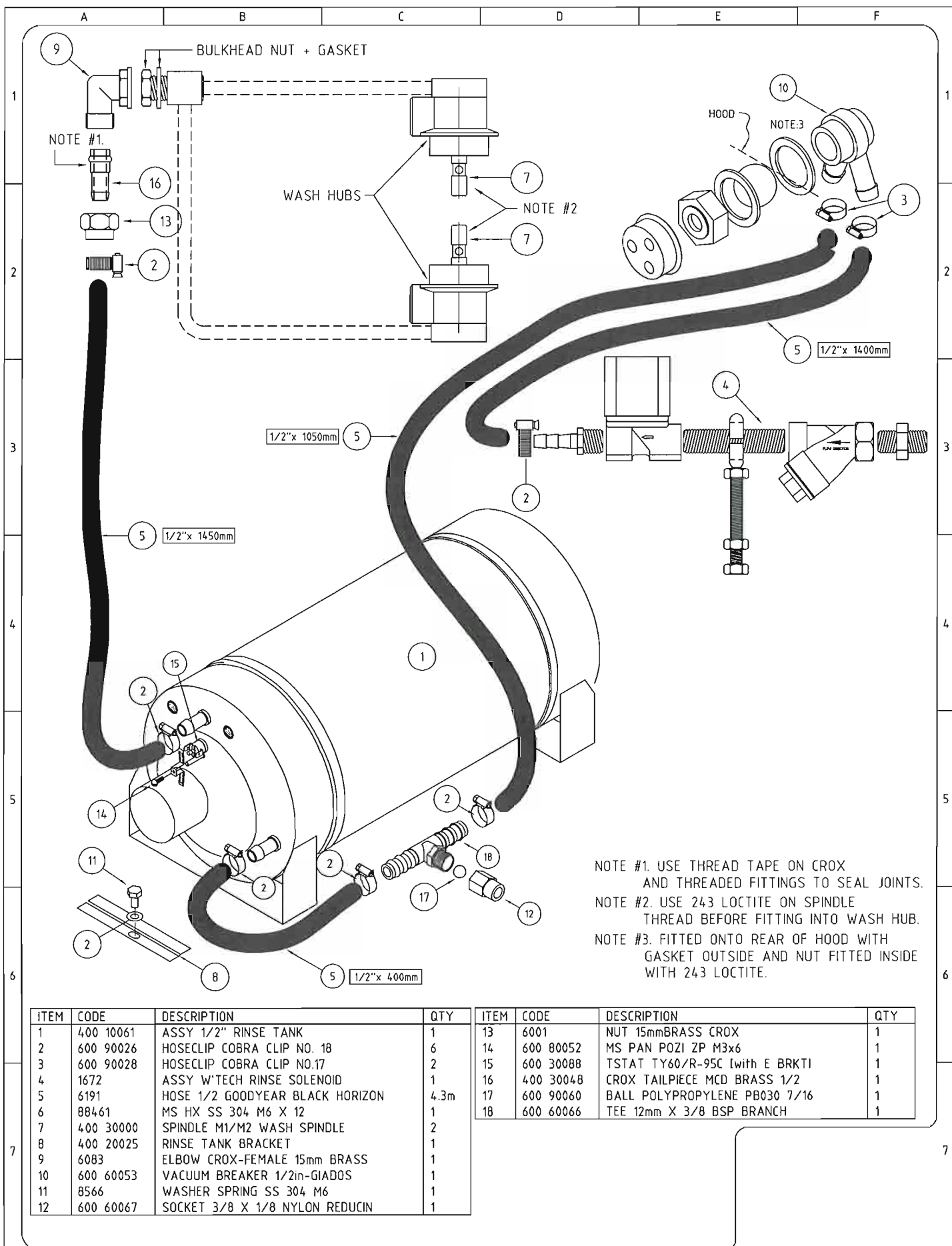
Washtech

9 CORBAN AVENUE, PO Box 21-342
HENDERSON, AUCKLAND, NEW ZEALAND
PH: (09) 837-2372 FX: (09) 837-0880

Drawing No. M220002	ISSUE NO. 1	Rev. A	Description: M2 (2) WASH SYSTEM (WASHTECH)	Scale NTS	Units: mm	Proj: 	Tolerance: REF	Checked by:
	Issue Date: 24-08-99			FINISH:				
	Drawn by: M.K.H			Material:				
	©Washtech Ltd, October 2015							

APPROVED

Drawing No.
M220002



3401 PACIFIC HIGHWAY, SLACKS CREEK,
QUEENSLAND 4127, AUSTRALIA
PH: (07) 3290-2877 FX: (07) 3290-2974

Wash[®]tech

9 CORBAN AVENUE, PO Box 21-342
HENDERSON, AUCKLAND, NEW ZEALAND
PH: (09) 837-2372 FX: (09) 837-0880

M20019

ISSUE NO. **1**
Rev. **1**
Issue Date:
14-05-99

Description:
RINSE SYSTEM M2 WASHTECH

©Washtech Ltd, October 2015

Scale 1:1 Units: mm Proj: Tolerance: ±0.5 ±1.0 checked by:

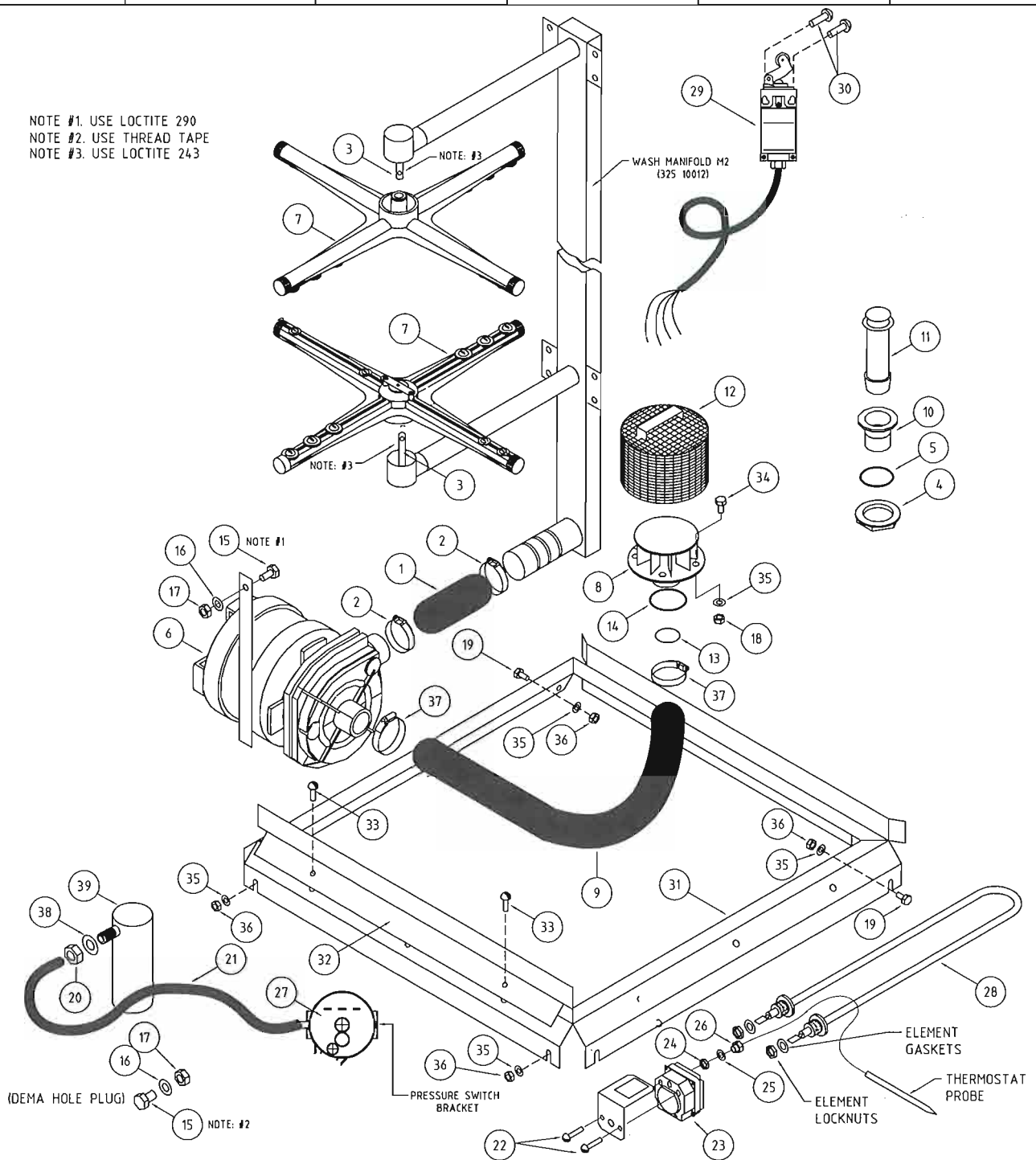
Material: AS SPECIFIED

FINISH:

Drawn by:
B.A.E

Drawing No:
M20019

NOTE #1. USE LOCTITE 290
NOTE #2. USE THREAD TAPE
NOTE #3. USE LOCTITE 243



ITEM	CODE	DESCRIPTION	QTY
1	325 90001	HOSE OUTLET M2 (38mm x 200mm)	1
2	ASS24	HOSECLIP ASS24	2
3	400 30000	SPINDLE M1/M2	2
4	6037	BACKNUT 126x40mm	1
5	1896	DRAIN WASTE GASKET	1
6	3904	PUMP WASH Mz 1HP	1
7	C420526	PLASTIC WASH/RINSE ARM	2
8	C160603	PUMP INLET FLANGE	1
9	24.38210	HOSE INLET M2	1
10	C160301	DRAIN OUTLET 1 1/2" 107063	1
11	C180704	OVERFLOW PIPE DRAIN UPSTAND	1
12	1238	WASH INLET FILTER 100mm CIRC	1
13	ARP229	O-RING 'ARP229'	1
14	ARP241	O-RING 'ARP241'	1
15	8835	SET SCREW 5/8 x 1/2	2
16	8568	WASHER SPRING 5/16"	2
17	8058	NUT 5/16"	2
18	8106	NUT Hx SS M6	4

ITEM	CODE	DESCRIPTION	QTY
19	88461	MS Hx SS M6 x 12	2
20	8120	NUT Hx ZP M10	1
21	30675	HOSE M2/AL PRESSURE SWITCH	1
22	8800	MS PAN PDZ1 ZP M4 x 6	2
23	30201	THERMOSTAT 1 POLE	1
24	3032	GLAND NUT	1
25	3033	GASKET GLAND	1
26	3031	GLAND BULKHEAD	1
27	30634	SWITCH M2 PRESSURE	1
28	30071	ELEMENT WASH 18KW STRAIGHT	1
29	400 60001	ASSY P/T DOOR SWITCH	1
30	88021	MS PAN PDZ1 ZP M4 x 30	2
31	1557	ASSY M2 RACKSLIDE	1
32	1560	BRACKET M2 RACK SLIDE	1
33	600 80017	MS TRUSS HEAD M5 x 12	2
34	600 80015	MS Hx SS M6 x 16	4
35	8566	WASHER SPRING SS 1/4"	8
36	8108	NUT DOME M6	4
37	ASS36	ASS36 HOSE CLIP	2
38	400 90010	GASKET	1
39	30663	PRESSURE BELL	1

UNIT 1, 27 ALLGAS STREET, SLACKS CREEK,
QUEENSLAND 4127, AUSTRALIA
PH: (07) 3290-2877 FX: (07) 3290-2974

Washtech ©

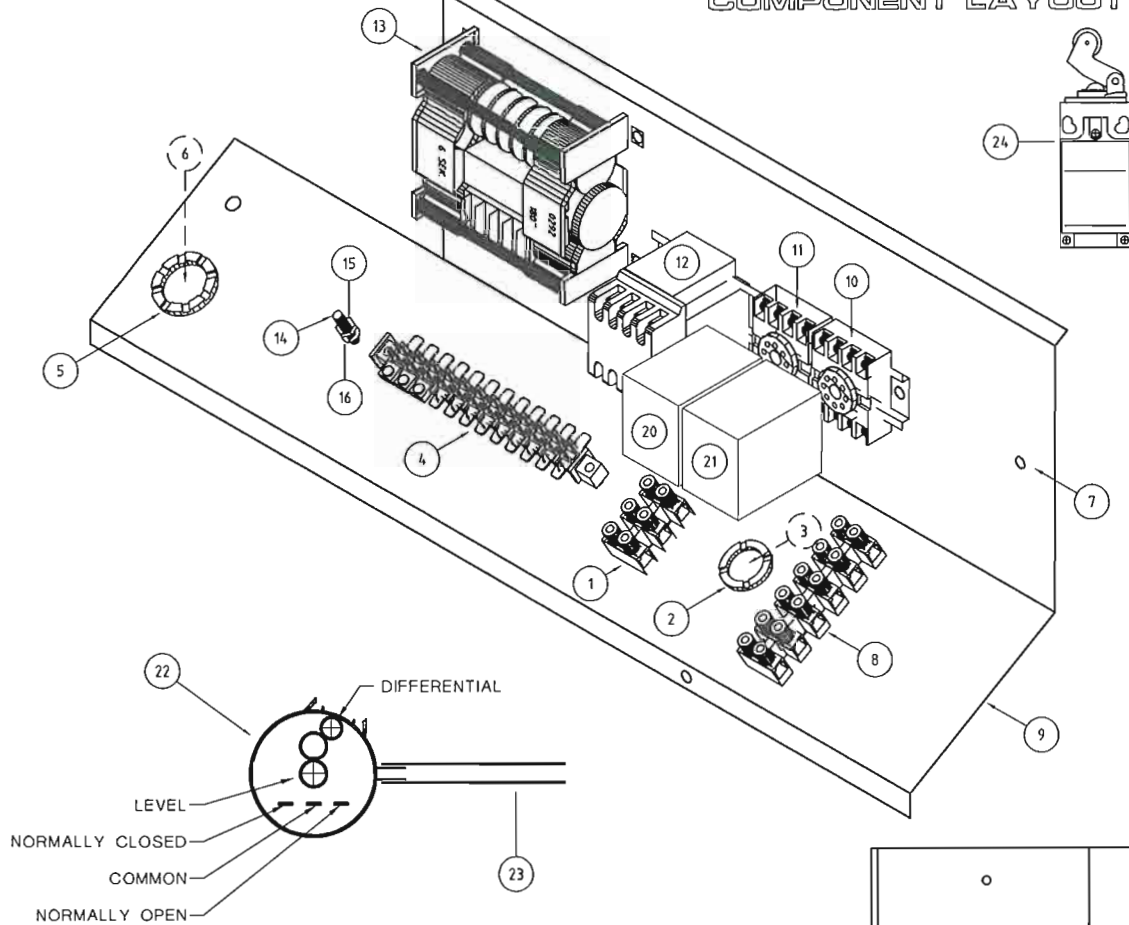
9 CORBAN AVENUE, PO Box 21-342
HENDERSON, AUCKLAND, NEW ZEALAND
PH: (09) 837-2372 FX: (09) 837-0880

Drawing No: M20020	ISSUE NO. 1	Rev. A	Description: M2 WASH SYSTEM (WASHTECH)	Scale NTS	Units mm	Proj. 	Tolerance: REF	Checked by:	
	Issue Date: 13-11-95			FINISH:					
	Drawn by: B.A.E			Material:					
	©Washtech Ltd, October 2015								

Drawing No:
M20020

A B C D E F

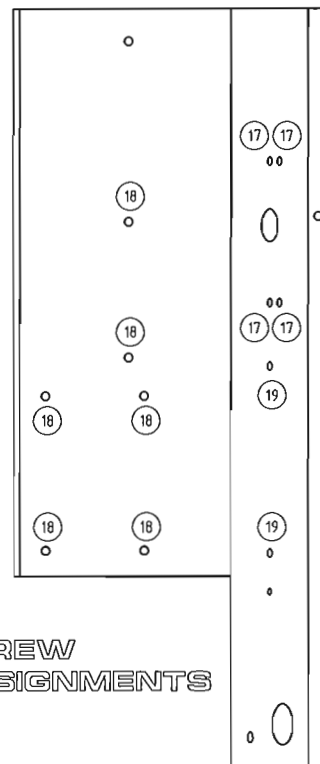
COMPONENT LAYOUT



KEY:

ITEM	CODE	DESCRIPTION	QTY
1	3227	TERMINAL STRIP 3 WAY	1
2	3246	BUSH 25mm MALE	1
3	3247	BUSH 25mm FEMALE	1
4	32285	TERMINAL BLOCK 12 WAY	1
5	3248	BUSH 32mm MALE	1
6	3249	BUSH 32mm FEMALE	1
7	3231	DIN RAIL ONLY DIN	150mm
8	32275	TERMINAL STRIP 6 WAY	1
9	16611	M2 WIRING TRAY SUB ASSEMBLY	1
10	3104	RELAY BASE 11 PIN	1
11	3103	RELAY BASE 8 PIN	1
12	3109	CONTACTOR 3 POLE S190 A2303001	1
13	3282	TIMER CDC7805 60:120:180 SEC	1
14	8816	MS RH BR 3/16" x 3/4"	1
15	8151	NUT HX BRASS 3/16" PRESSED	1
16	8565	WASHER F1 BR 3/16"	1
17	8802	MS PAN SLOT ZP M4x25	4
18	8800	MS PAN SLOT ZP M4x6	6
19	8801	MS PAN SLOT ZP M4x12	4
20	3101	RELAY START/WASH CH1-2W 240V	1
21	3102	RELAY ST/SL IM060-13 240V	1
22	30634	SWITCH PRESSURE	1
23	30675	HOSE M2/AL PRESSURE SWITCH	1
24	3051	DOOR SWITCH M1/M2/AL	1

SCREW ASSIGNMENTS

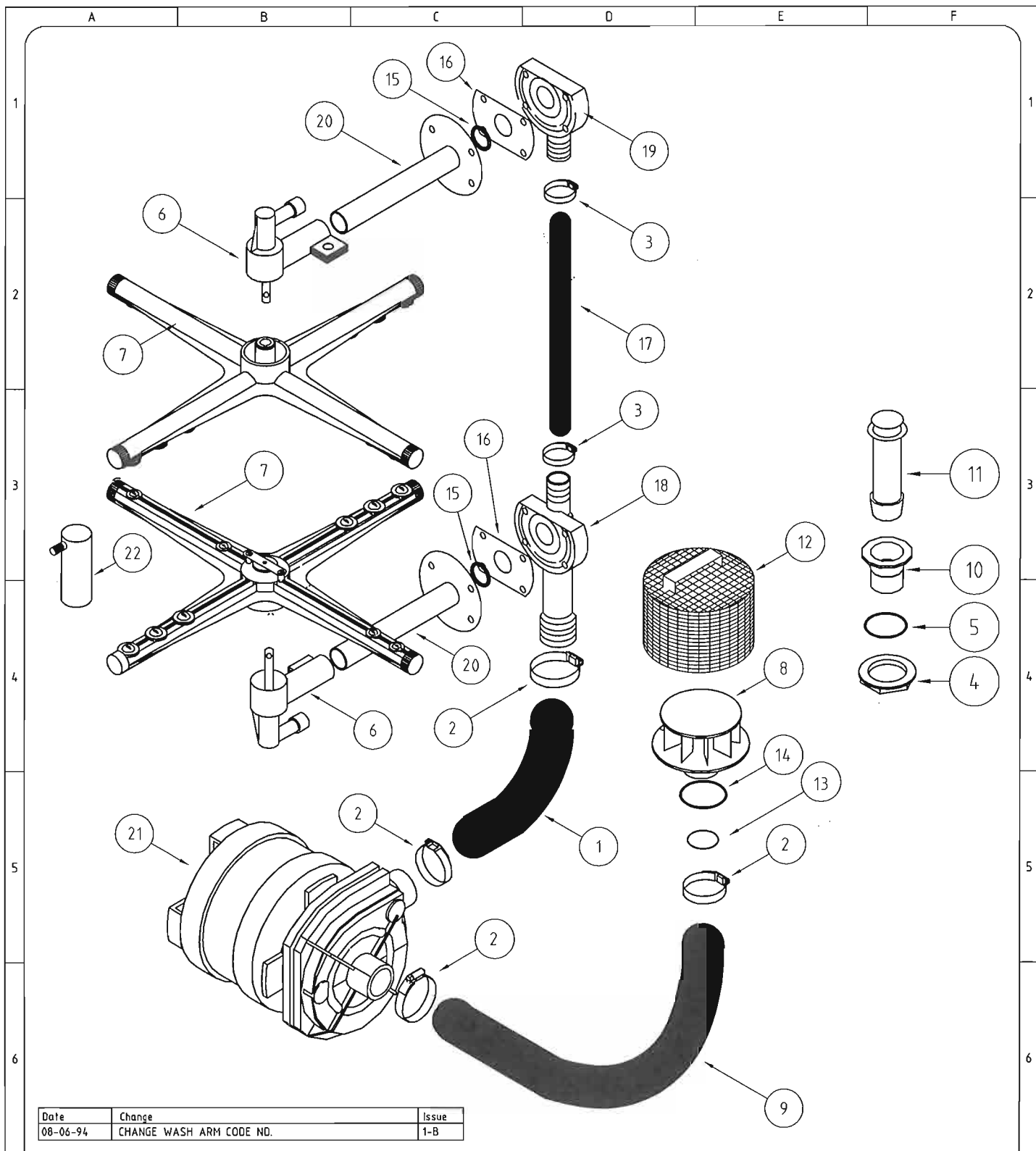


UNIT 1, 27 ALLGAS STREET, SLACKS CREEK,
QUEENSLAND 4127, AUSTRALIA
PH: (07) 3290-2877 FX: (07) 3290-2974

Washtech

9 CORBAN AVENUE, PO Box 21-342
HENDERSON, AUCKLAND, NEW ZEALAND
PH: (09) 837-2372 FX: (09) 837-0880

Drawing No: M206W	ISSUE NO: 1	Rev. B	Description: WIRING TRAY ASSEMBLY M2 (WASHTECH) ©Washtech Ltd, October 2015	Scale REF	Units: mm	Proj: Tolerance: ±0.5 ±1.0	Checked by:	
	Issue Date:			Material: AS SPECIFIED			Drawn by: B.A.E.	
				FINISH:			Drawing No: M206W	



Date	Change	Issue
08-06-94	CHANGE WASH ARM CODE NO.	1-B

ITEM	CODE	DESCRIPTION	QTY	ITEM	CODE	DESCRIPTION	QTY
1	24.38220	HOSE OUTLET M2	1	12	1238	WASH INLET FILTER 100mm CIRC	1
2	ASS28	HOSECLIP ASS28	4	13	ARP229	O-RING 'ARP229'	1
3	ASS16	HOSECLIP ASS16	2	14	ARP241	O-RING 'ARP241'	1
4	6037	BACKNUT 126x40mm	1	15	2234	GASKET M1/M2 WASH ADAPTOR	2
5	1896	DRAIN WASTE GASKET	1	16	200434	M2 UPPER WASH GASKET	2
6	C190206	SUPPORT WASH RINSE ARM C30	2	17	200356C	HOSE UPPER WASH M2	1
7	C420526	PLASTIC WASH/RINSE ARM	2	18	C180404	CONNECTOR EXT WASH HOSE LOWER	1
8	C160603	PUMP INLET FLANGE	1	19	C180405	CONNECTOR EXT WASH HOSE UPPER	1
9	24.38210	HOSE INLET M2	1	20	1614	ASSEMBLY M2 INTERNAL WASH PIPE	1
10	C160301	DRAIN OUTLET 1.1/2" 107063	1	21	3909	PUMP WASH M2 1HP	1
11	C180704	OVERFLOW PIPE DRAIN UPSTAND	1	22	30663	PRESSURE BELL M2	1

UNIT 1, 27 ALLGAS STREET, SLACKS CREEK,
QUEENSLAND 4127, AUSTRALIA
PH: (07) 3290-2877 FX: (07) 3290-2974

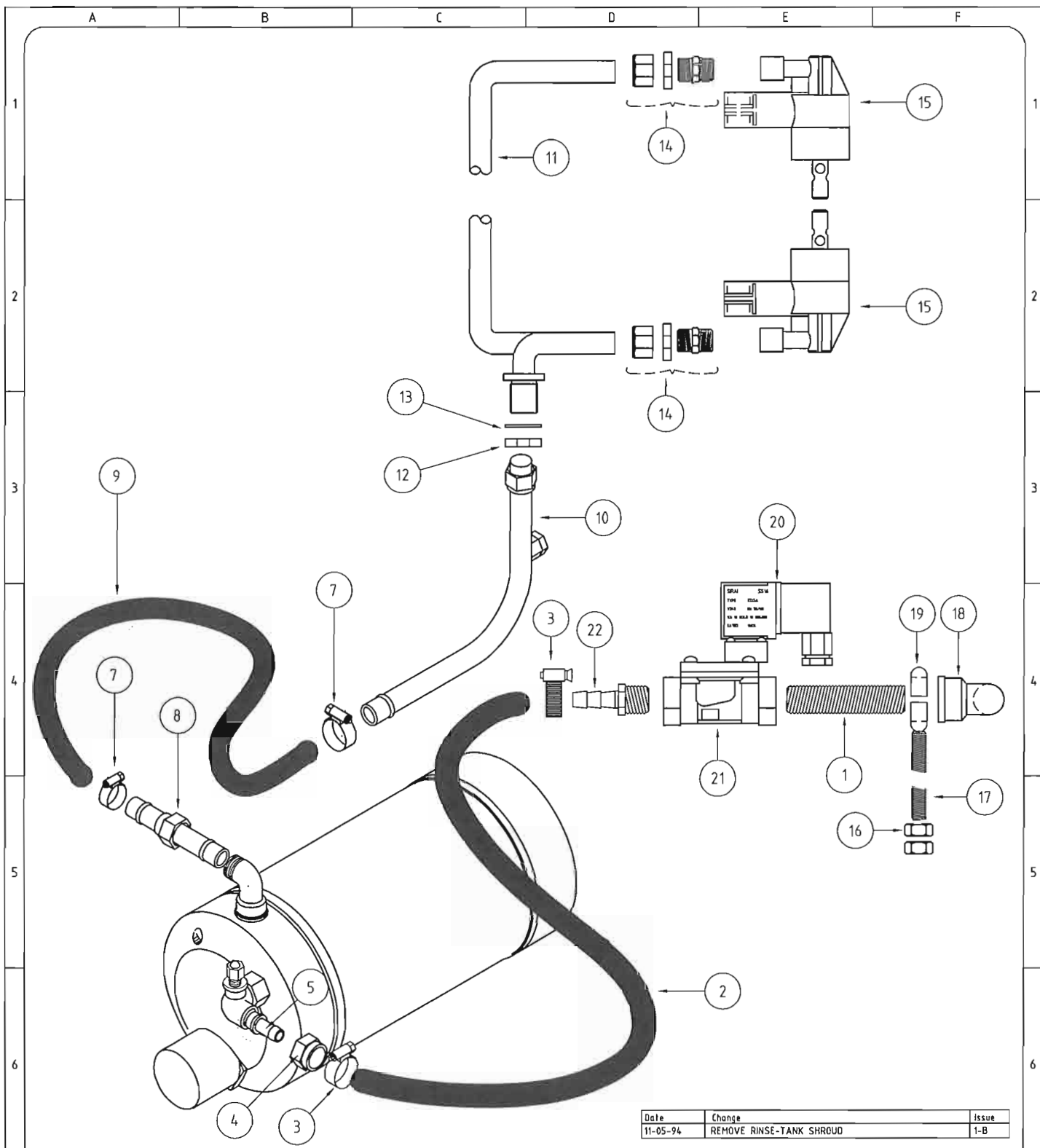
Washtech®

9 CORBAN AVENUE, PO Box 21-342
HENDERSON, AUCKLAND, NEW ZEALAND
PH: (09) 837-2372 FX: (09) 837-0880

Drawing No: M201W

ISSUE NO. 1	Rev. B	Description: WASH SYSTEM M2 WASHTECH	Scale REF	Units: mm	Proj: 	Tolerance: ±0.5 ±1.0	Checked by:
Issue Date:		©Washtech Ltd, October 2015	Material:				Drawn by: B.A.E.
			FINISH:				Drawing No: M201W

DO NOT SCALE - IF IN DOUBT ASK DWG SIZE A4 (180x265)



Item	CODE No.	Description	Qty	ITEM	CODE	DESCRIPTION	QTY
1	1572	NIPPLE W/TECH SOLENOID	1	12	1955	BULK HEAD NUT	1
2	16861	HOSE M2 RINSE TANK INLET	1	13	1894	GASKET BULKHEAD FITTING	1
3	ASS06	HOSECLIP	2	14	6228	WASH ADAPTOR CONNECTION	2
4	6001	CROX NUT	1	15	C190206	SUPPORT WASH/RINSE ARM	2
5	18211	CROX TAILPIECE	1	16	8060	NUT HEX S/S 3/8"	2
6	16632	RINSE TANK ASSY.	1	17	1573	STUD M2 WASHTECH SOLENOID MOUNT	1
7	ASS10	HOSECLIP	2	18	6083	ELBOW CROX FEMALE 15mm BRASS	1
8	6152	NUT & TAIL ASSEMBLY.	1	19	6074	MUNSEN RING (SADDLE CLAMP) 15mm	1
9	1668	HOSE M2 RINSE FEED	1	20	33301	COIL ASCO SOLENOID	1
10	1686	M2 RINSE TANK OUTLET PIPE	1	21	33302	BODY ASCO SOLENOID	1
11	16705	RINSE FEED PIPE ASSY. M2	1	22	6149	TAILPIECE 1/2"x3/8"	1

UNIT 1, 27 ALLGAS STREET, SLACKS CREEK,
QUEENSLAND 4127, AUSTRALIA
PH: (07) 3290-2877 FX: (07) 3290-2974

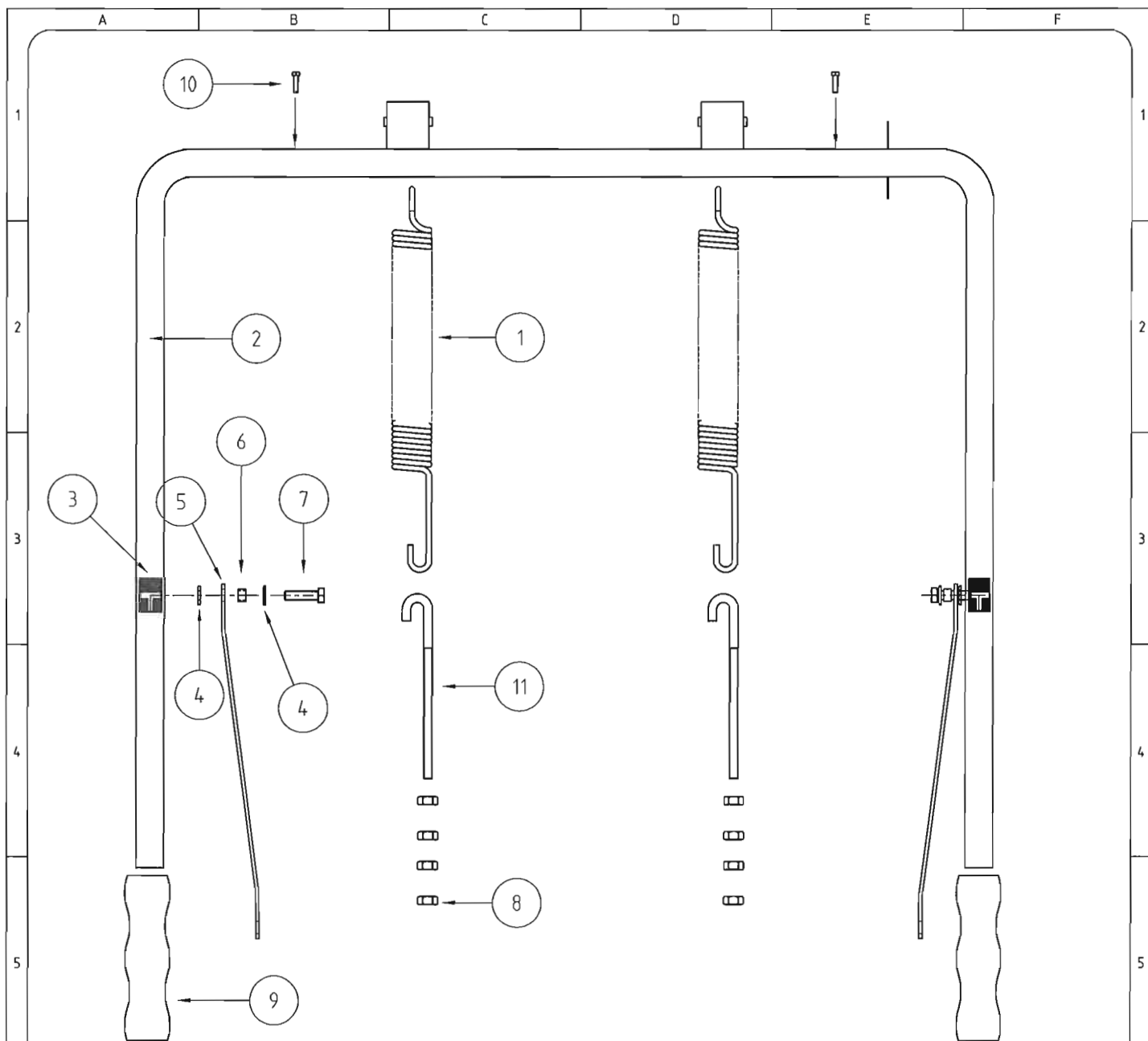
Washtech ©

9 CORBAN AVENUE, PO Box 21-342
HENDERSON, AUCKLAND, NEW ZEALAND
PH: (09) 837-2372 FX: (09) 837-0880

Drawing No: M205W

ISSUE NO. 1	Rev. C	Description: RINSE SYSTEM M2 "WASHTECH"	Scale REF	Units: mm	Proj: Tolerance: REF	Checked by:	Drawn by: B.A.E.
Issue Date:	©Washtech Ltd, October 2015		Material: AS SPECIFIED		FINISH:		Drawing No: M205W

DO NOT SCALE - IF IN DOUBT ASK DWG SIZE A4 (180x265)




Item	CODE No.	Description	Qty
1	16521	SPRING DOOR 37x355x5mm	2
2	1651	DOOR HANDLE M2	1
3	1655	HANDLE TRUNION	2
4	8506	WASHER FL SS 5/16"	2
5	1554	DOOR LINK GENERAL	2
6	1658	SPACER M1/M2/AL/LED	2
7	8840	MS HX SS 5/16"x5/4"	2
8	8119	NUT HX ZP M8	8
9	1884	HAND GRIP BLACK PVC #598	2
10	8842	MS HX SS 3/16"x1/2"	2
11	8899	J BOLT ZP M8 170	2

UNIT 1, 27 ALLGAS STREET, SLACKS CREEK,
QUEENSLAND 4127, AUSTRALIA
PH: (07) 3290-2877 FX: (07) 3290-2974

Washtech ©

9 CORBAN AVENUE, PO Box 21-342
HENDERSON, AUCKLAND, NEW ZEALAND
PH: (09) 837-2372 FX: (09) 837-0880

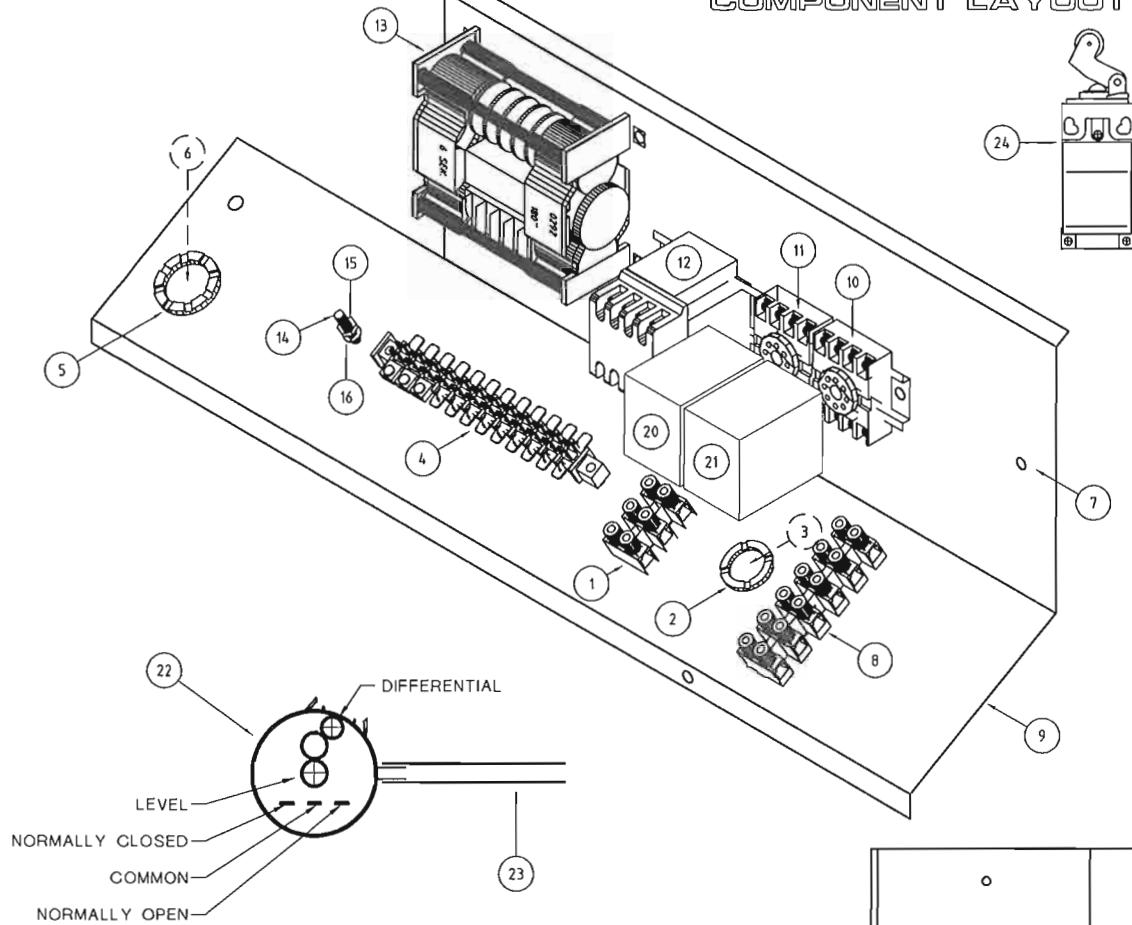
Drawing No:
M207W

ISSUE NO. 1	Rev. A	Description: DOOR HANDLE ASSEMBLY M2 "WASHTECH" ©Washtech Ltd, October 2015	Scale REF	Units: mm		Proj: Tolerance: ±0.5 ±1.0	Checked by:	
Issue Date:			Material: REF					Drawn by: B.A.E
			FINISH:					Drawing No: M207W

DO NOT SCALE - IF IN DOUBT ASK DWG SIZE A4 (180x265)

A B C D E F

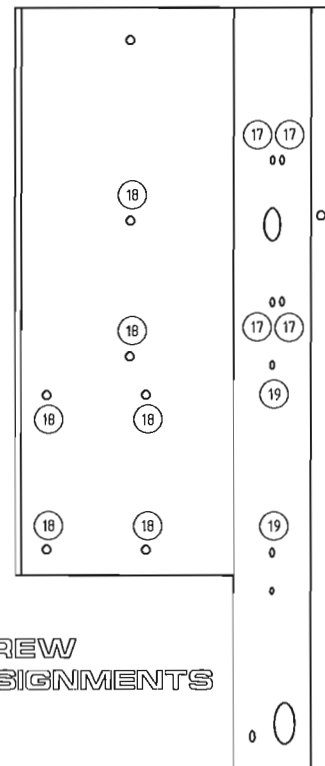
COMPONENT LAYOUT



KEY:

ITEM	CODE	DESCRIPTION	QTY
1	3227	TERMINAL STRIP 3 WAY	1
2	3246	BUSH 25mm MALE	1
3	3247	BUSH 25mm FEMALE	1
4	32285	TERMINAL BLOCK 12 WAY	1
5	3248	BUSH 32mm MALE	1
6	3249	BUSH 32mm FEMALE	1
7	3231	DIN RAIL ANLY DIN	150mm
8	32275	TERMINAL STRIP 6 WAY	1
9	16611	M2 WIRING TRAY SUB ASSEMBLY	1
10	3104	RELAY BASE 11 PIN	1
11	3103	RELAY BASE 8 PIN	1
12	3109	CONTACTOR 3 POLE S190 A2303001	1
13	3282	TIMER CDC7805 60:120:180 SEC	1
14	8816	MS RH BR 3/16" x 3/4"	1
15	8151	NUT HX BRASS 3/16" PRESSED	1
16	8565	WASHER F1 BR 3/16"	1
17	8802	MS PAN SLOT ZP M4x25	4
18	8800	MS PAN SLOT ZP M4x6	6
19	8801	MS PAN SLOT ZP M4x12	4
20	3101	RELAY START\WASH CH1-2W 240V	1
21	3102	RELAY ST/SL IM060-13 240V	1
22	30634	SWITCH PRESSURE	1
23	30675	HOSE M2/AL PRESSURE SWITCH	1
24	3051	DOOR SWITCH M1/M2/AL	1

SCREW ASSIGNMENTS



UNIT 1, 27 ALLGAS STREET, SLACKS CREEK,
QUEENSLAND 4127, AUSTRALIA
PH: (07) 3290-2877 FX: (07) 3290-2974

Washtech

9 CORBAN AVENUE, PO Box 21-342
HENDERSON, AUCKLAND, NEW ZEALAND
PH: (09) 837-2372 FX: (09) 837-0880

Drawing No: M206W

ISSUE NO: 1	Rev. B	Description: WIRING TRAY ASSEMBLY M2 (WASHTECH)	Scale REF	Units: mm	Proj: Tolerance: ±0.5 ±1.0	Checked by:
Issue Date:		©Washtech Ltd, October 2015	Material: AS SPECIFIED	FINISH:	Drawn by: B.A.E	Drawing No: M206W

DO NOT SCALE - IF IN DOUBT ASK DWG SIZE A4 (180x265)