

**M2**

**Series 3**

PASSTHROUGH DISHWASHER



# Parts Manual

# Spare Parts

---

DESCRIPTION	PART NO
<b>Cabinet &amp; Door</b>	
Control Panel Sub-Assembly	400 10140
Control Panel Label	400 70079
Door Slide Profile	326 30004
Door Switch Magnet	600 30182
Spring Door 27 x 735 x 5	326 30019
<b>Controls &amp; Indicators</b>	
Contactor	600 30229
Door Reed Switch	600 30183
Door Switch Relay	600 30223
Knob 4 Position	30415
Power Light	600 30161
Pressure Switch 140/60mm	600 30308
Ready Light	600 30162
Run Light	600 30163
Switch 4 Position	600 30269
Temperature Gauge	600 90080
Terminal Strip 12 Way	3229
Test Switch	3035
Timer	32822
<b>Heating Components</b>	
Over Temperature Thermostat	600 30088
Rinse Element 2 x 2.5 KW	3005
Rinse Tank Assembly	400 10117
Rinse Thermostat	3020
Wash Element 2.5 KW	600 30159
Wash Thermostat	30201
<b>Hoses &amp; Fittings</b>	
Lower Wash Connection Hose (75 mm long)	6196
Pressure Switch Hose (specify length)	3067
Rinse Hose (specify length)	600 60073
Rinse Tee SS	400 90076
Upper Wash Connection Hose (75 mm long)	6196
Upper Wash Hose (400 mm long)	61931
Wash Pump Inlet Hose (75 mm long)	6194
Wash Pump Outlet Hose (145 mm long)	6195

# Spare Parts

---

DESCRIPTION	PART NO
<b>Pumps &amp; Valves</b>	
Dual Check Valve	600 60108
Solenoid Valve Assembly	400 10121
Solenoid Valve Brass	600 30289
Solenoid Valve Plastic	3342
Strainer Line ½	6950
Wash Pump FIR	3904
Wash Pump ZF 320V SX	600 30299
Wash Pump Capacitor 12.5 mF	3892
<b>Wash Tank Components</b>	
Drain Upstand	400 10144
Nut M2 Wash Spindle	400 30074
Pressure Bell	400 90135
Rinse Arm	260 10097
Rinse Arm Bush	C190624
Rinse Arm End Plug	400 30200
Rinse Arm Jet	400 30087
Rinse Arm Spindle	400 30073
Scrap Tray	326 12003
Slip Ring Black Acetal	400 30190
Temperature Gauge Probe Clamp	400 20066
Wash Arm	326 10030
Wash Arm Bush	C190624
Wash Pump Inlet Filter	326 20010
Wash Arm End Screw Plug	600 80072
Wash Arm Securing Nut	400 30074
Wash Arm Spindle	400 30072

**Note:**

For more parts look in the section “Assembly Diagrams”.

# Wash Pump

## Part Number

600 30299

## Function

Pumps water from the wash tank to the wash arms providing a recirculating wash cycle.

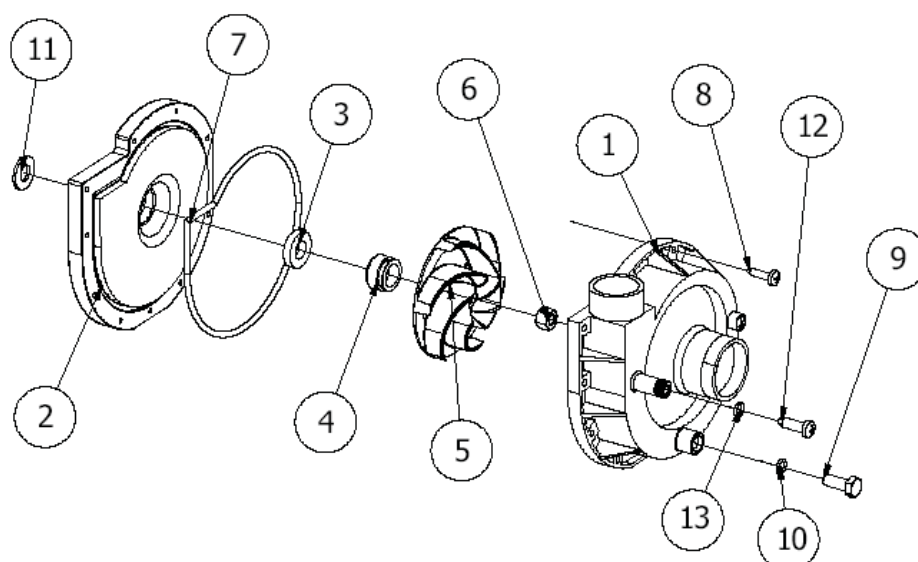
## Description

Electric Pump ZF 320V SX

Power:	HP 0.93 Kw 0.68	Speed	2800 rpm
Voltage:	230 V 50Hz	Protection:	IP 20
Amperes:	3.0 A	Hm Min:	1.0 m
Capacitor:	12.5 uF	Hm Max:	12.3 m

## Diagram

Hydraulic parts



ITEM	DESCRIPTION	PART #	ITEM	DESCRIPTION	PART #
1	Volute	600 41116	7	O-ring	600 41113
2	Pump flange	600 41117	8	Screw	-
3	Fixed seal	600 41110	9	Plug screw	-
4	Rotating seal	600 41111	10	O-ring plug	-
5	Impeller	600 41115	12	Screw hose connector	-
6	Nut	600 41112	13	O-ring hose connector	-

## Replacement

Drain the wash tank and switch off the power.

Disconnect the wires from the pump connectors and the pump capacitor. .

Release the hose clamps on the inlet and outlet pump hoses and remove the pump.

Replace in reverse order.

# Wash Pump

## Part Number

3904

## Function

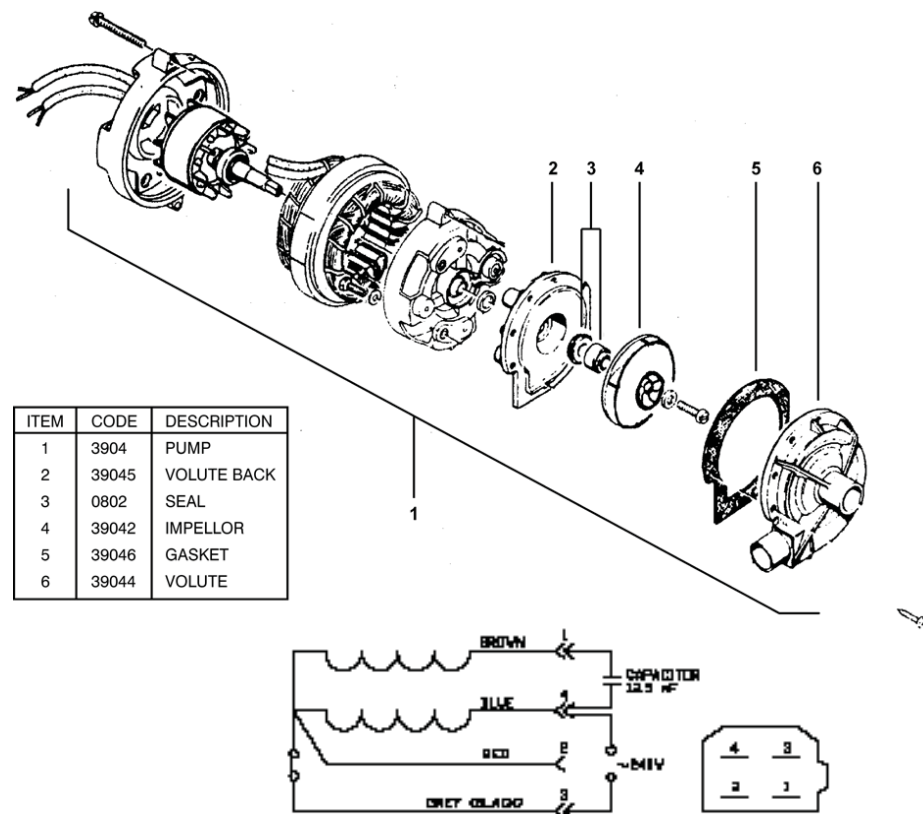
Pumps water from the wash tank to the wash arms providing a recirculating wash cycle.

## Description

Electric Pump FIR

Power:	HP 1 Kw 0.73	Speed:	2750 rpm
Voltage:	240 V	Amperes:	4.1 A
Frequency:	50 Hz	Capacitor:	12.5 uF/400 V

## Diagram



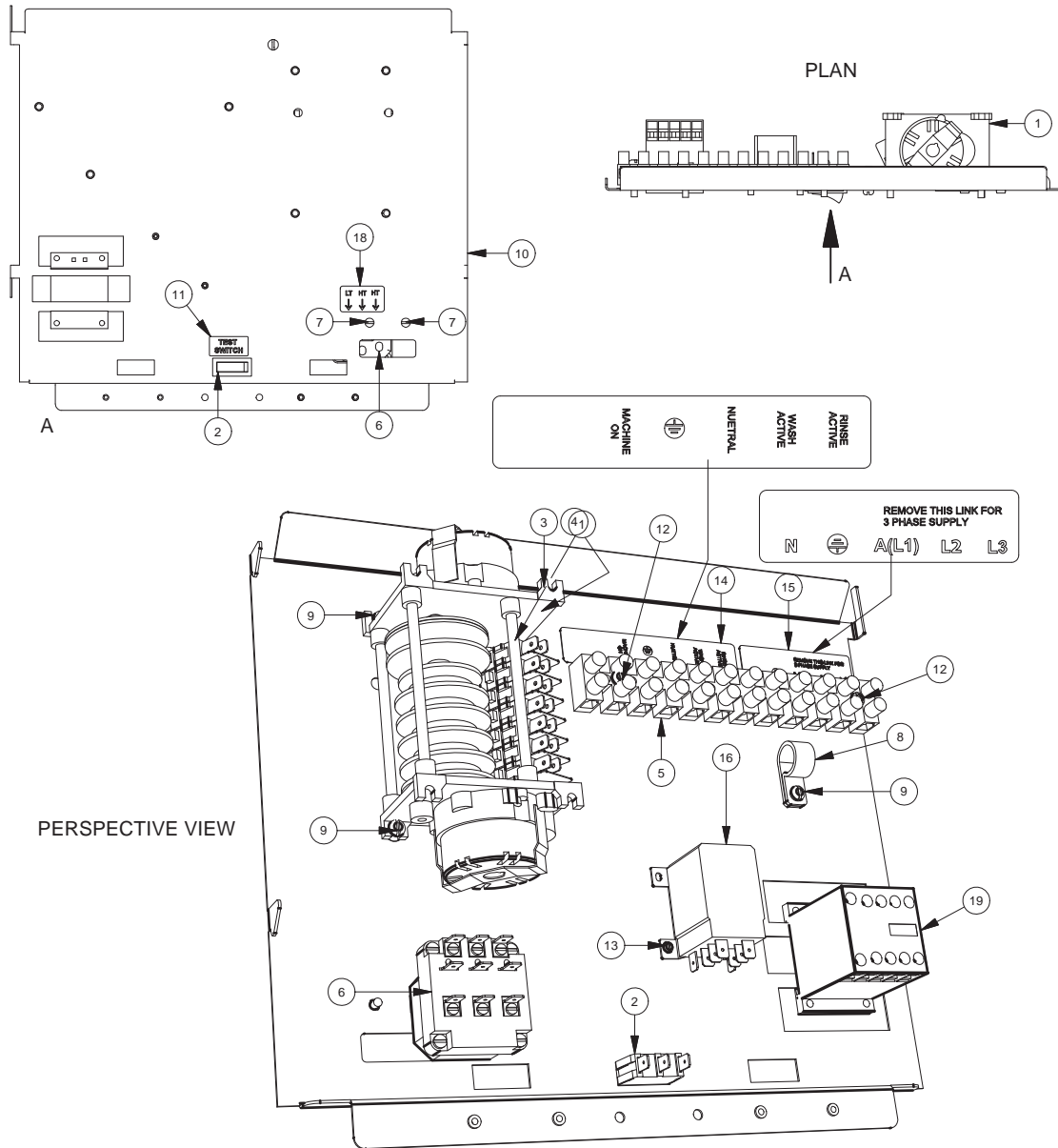
## Replacement

Drain the wash tank and switch off the power.  
Disconnect the wires from the pump connectors and the pump capacitor.  
Remove M6 bolt that fastens the pump to the floor of the machine.  
Release the hose clamps on the inlet and outlet pump hoses and remove the pump.  
Replace in reverse order.

# Assembly Diagrams

## M2 (3) WASHTECH WIRING TRAY ASSY

326 10221 14/10/2011 REV 3-D



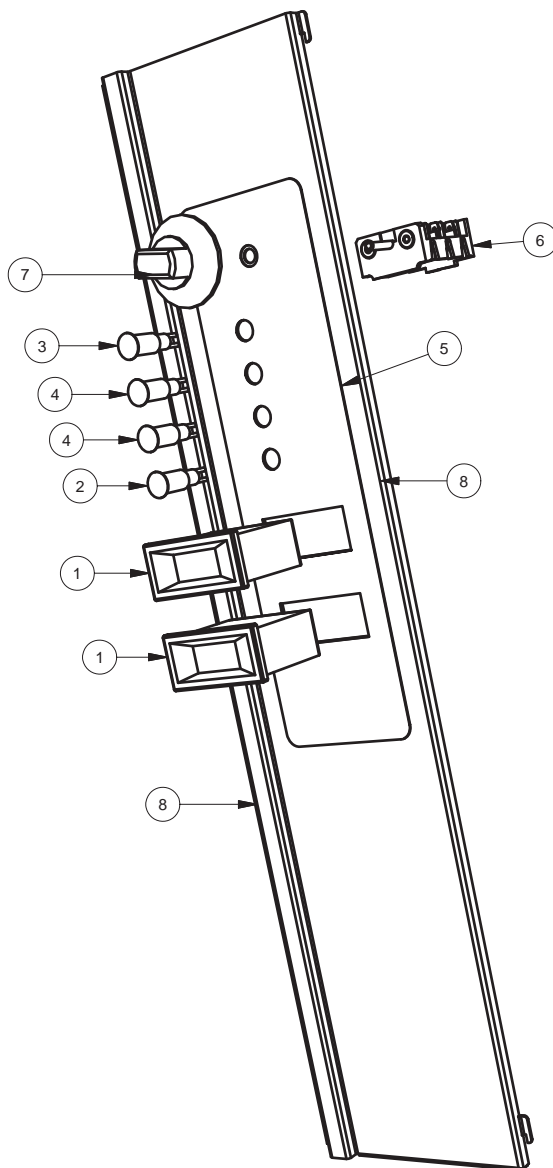
Parts List			
ITEM	PART NUMBER	DESCRIPTION	QTY
1	32822	TIMER4907DV(180/6 SEC)3 CYCLE	1
2	3035	SWITCH SINGLE POLE BIASED BLACK	1
3	8816	MS RH BRASS 3/16 X 3/4	1
4	8151	NUT HX BRASS 3/16" PRESSED	1
5	3229	TERMINAL STRIP 12 WAY	1
6	3020	3 POLE THERMOSTAT	1
7	8800	MS PAN POZI ZP M4x6	2
8	600 30131	P CLIP 20.8mm	1
9	8801	MS PAN POZI ZP M4x12	5
19	600 30337	CONTACTOR 20A 3NO/NC 230-240V	1

Parts List			
ITEM	PART NUMBER	DESCRIPTION	QTY
10	326 10216	M2 (3) WIRING TRAY SUB ASSEMBLY	1
11	REF	LABEL TEST SWITCH	1
12	8802	MS PAN POZI ZP M4x25	2
13	600 80052	MS RH ZP M3x6	2
14	REF	CHEMICAL CONNECTIONS LABEL	1
15	REF	POWER CONNECTIONS LABEL	1
16	600 30223	JQX-12F POWER RELAY	1
18	REF	LABEL THERMOSTAT ADJUSTMENTS	1
19	600 30337	CONTACTOR 20A 3NO/NC 230-240V	1

# AL/AL8/M2/PW3 CONTROL PANEL ASSY

400 10123 24/01/2008 REV 3-B

## EXPLODED PERSPECTIVE

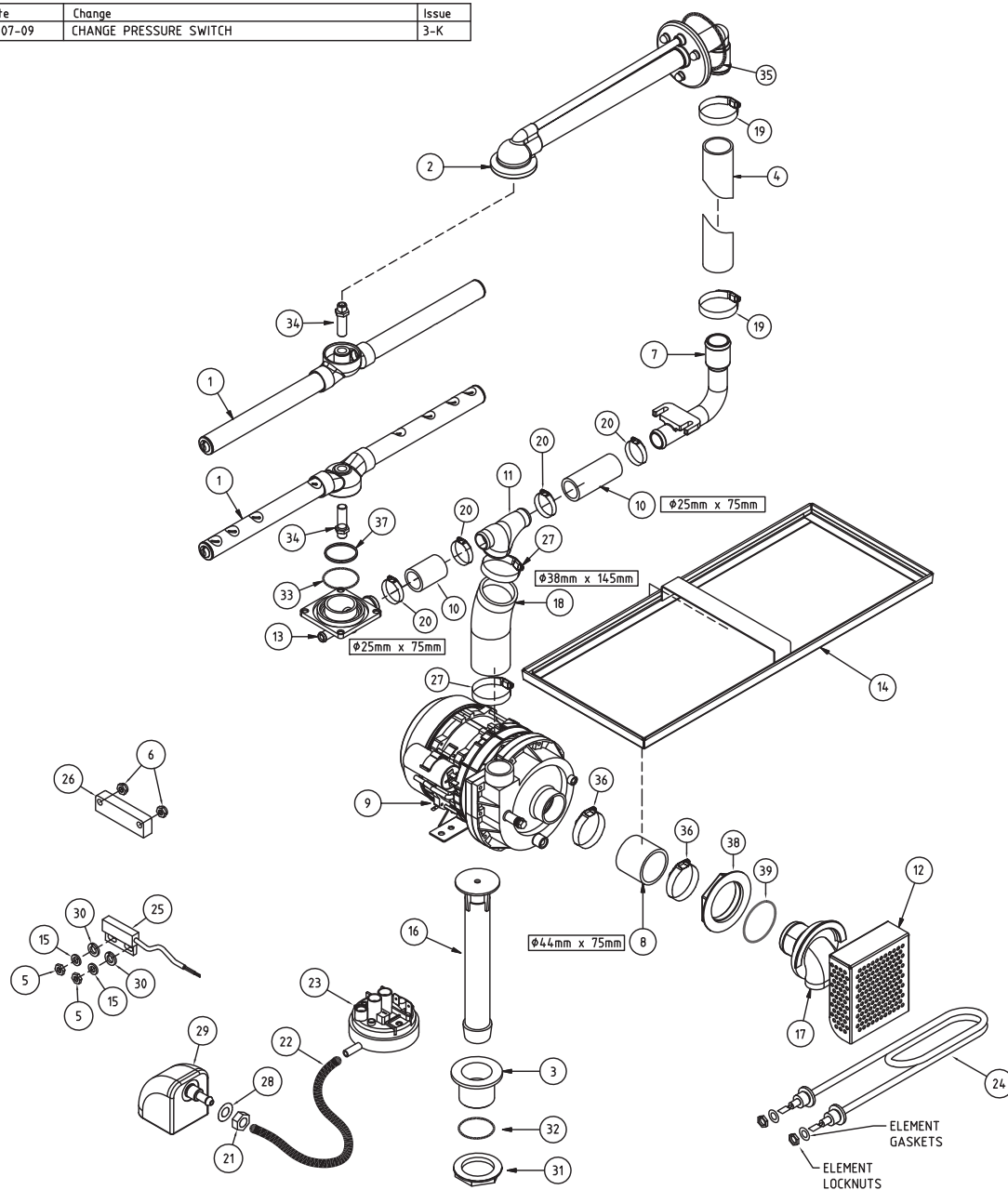


Parts List			
ITEM	PART NUMBER	DESCRIPTION	QTY
1	600 90080	TEMP GAUGE RECTANGULAR 58x25	2
2	600 30161	LENS & NEON ASSY (RED) 12mm	1
3	600 30163	LENS & NEON ASSY (GREEN) 12mm	1
4	600 30162	LENS & NEON ASSY (AMBER) 12mm	2
5	400 70079	M2 - AL CONTROL LABEL	1
6	600 30269	SWITCH 4 WAY QUICK CONNECT	1
7	30415	KNOB 4 POSITION	1
8	400 10140	M2 THROUGH TO PW3 CONTROL PANEL SUB-ASSY	1

# M2-3 WASH SYSTEM

M2 30001 31-07-09 3K

Date	Change	Issue
31-07-09	CHANGE PRESSURE SWITCH	3-K



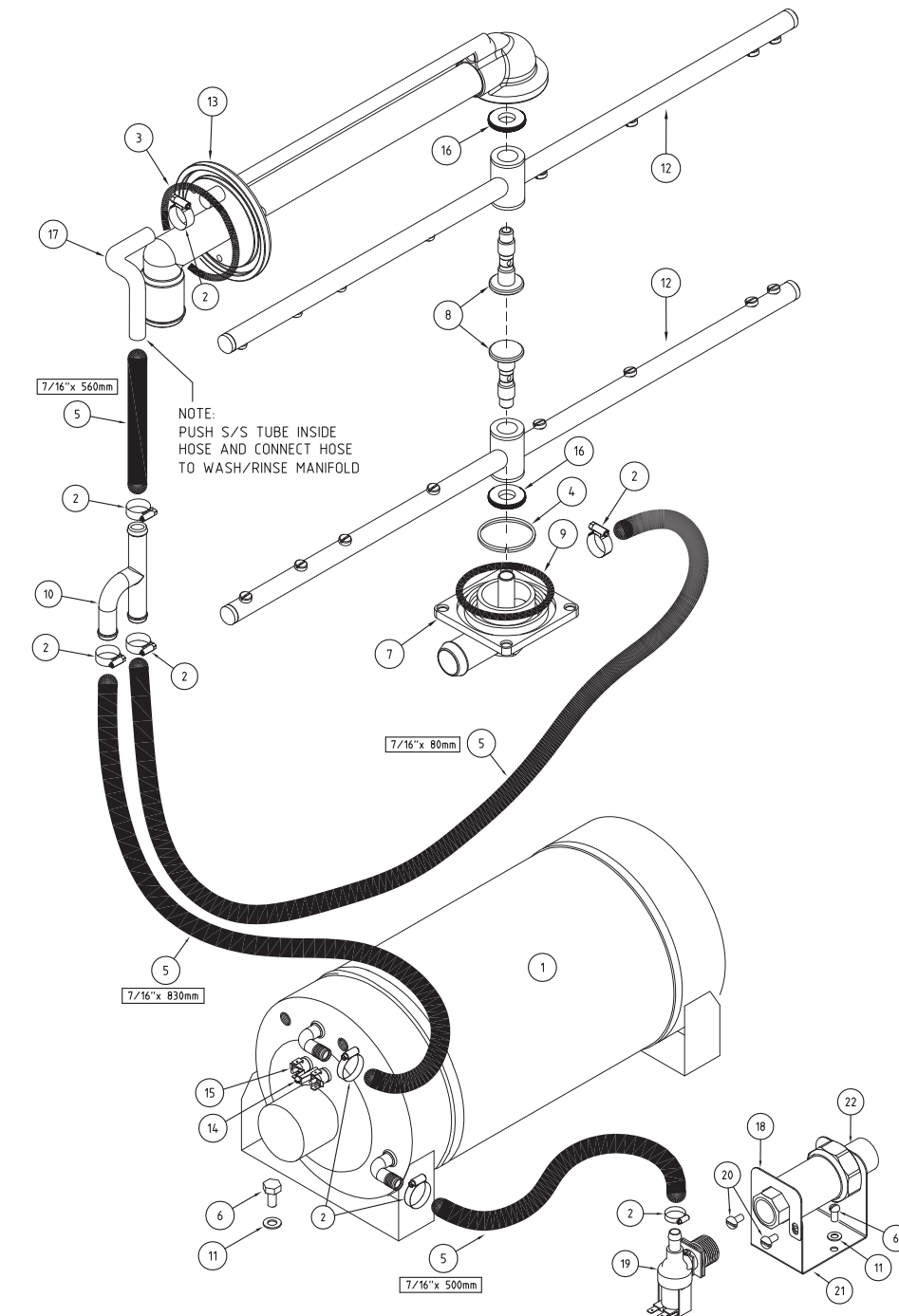
ITEM	CODE	DESCRIPTION	QTY
1	326 10030	M2(3) WASH ARM ASSEMBLY	2
2	326 10040	M2(3) UPPER MANIFOLD ASSY	1
3	400 30042	WASTE DRAIN PLASTIC 40mm PLASTIC	1
4	326 90004	M2(3) UPPER WASH HOSE	1
5	8112	NUT HEX SS 304 M4	2
6	600 80079	NYLOC NUT M4 304	2
7	400 90108	25mm DIA 90 DEG ELBOW	1
8	6194	HOSE 44mm 2 PLY RADIATOR HOSE	1
9	600 30299	PUMP WASH 1HP ZF 320V SX	1
10	6196	HOSE 25mm 2 PLY RADIATOR	2
11	400 90069	TEE 25/38MM REDUCER	1
12	326 20010	M2(3) WASH INLET FILTER	1
13	400 90077	GLV WASH TEE	1
14	326 12003	M2(3) SCRAP TRAY ASSEMBLY	1
15	8567	WASHER SPRING SS 304 MS	2
16	400 10144	277mm LONG UPSTAND 'K'	1
17	400 90114	M2 WASH PUMP INLET	1
18	6195	HOSE 38mm 2 PLY RADIATOR	1
19	ASS20	ASS20 HOSE CLIP	2
20	ASS16	HOSECLIP ASS16	4

ITEM	CODE	DESCRIPTION	QTY
21	600 80009	NUT SS 304 HEX M10	1
22	3067	HOSE PRESSURE SW VACUUM 4mm	1
23	600 30308	PRESSURE SWITCH METAFLEX 140/60mm	1
24	600 30159	ELEMENT WASH 2.5KW STRAIGHT	1
25	600 30183	REED SWITCH STEM	1
26	600 30182	MAGNETIC UNIT	1
27	ASS24	ASS24 HOSE CLIP	2
28	ARP205	O RING 205	1
29	400 90135	SQUARE PRESSURE BELL CASTING	1
30	600 80081	M4 WASHER 304	2
31	6037	BACKNUT 126x40mm	1
32	1896	DRAIN WASTE GASKET	1
33	ARP333	O-RING	1
34	400 30072	SPINDLE M2 WASH	1
35	ARP336	O-RING ARP336	1
36	ASS28	ASS28 HOSECLIP	2
37	400 30190	SLIP RING BLACK ACETAL	1
38	400 90115	1 3/4\" S/S BACKNUT	1
39	ARP331	O-RING ARP331	1



# RINSE SYSTEM M2(3) WASHTECH

M2 30002 7-09-10 3 G

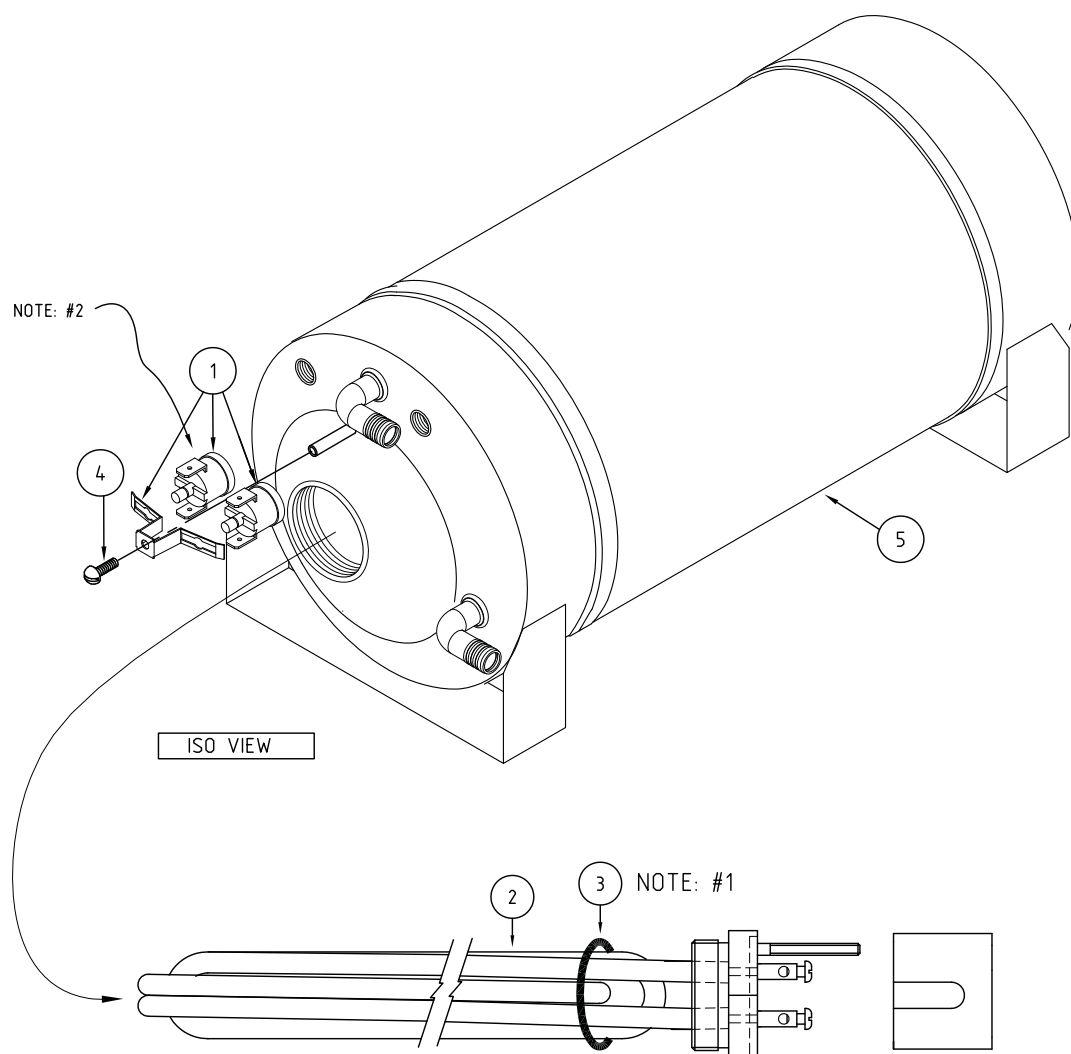


Date	Change	Issue
04-07-07	CHANGE RINSE TANK ASSEMBLY	3-E
11-08-10	CHANGE RINSE ARMS	3-F
7-09-10	CHANGE RINSE SOLENOID	3-G

ITEM	CODE	DESCRIPTION	QTY	ITEM	CODE	DESCRIPTION	QTY
1	400 10117	5 KW ASSY R/TANK 1/2" 2 THERMOSTATS	1	12	260 10097	UD-PW1 RINSE ARM ASSY	2
2	ASS6	HOSECLIP ASS6	8	13	326 10040	M2(3) UPPER MANIFOLD ASSY	1
3	ARP336	O-RING	1	14	600 80052	MS PAN POZI ZP M3x6	1
4	400 30189	SLIP RING WHITE ACETAL	1	15	600 30088	TSTAT TY60/R-95C (with E BRKT)	2
5	600 60073	HOTOTAL HOSE 11mm X 19mm	2m	16	400 30074	NUT M2 WASH SPINDLE	2
6	88461	MS HX SS 304 M6 X 12	3	17	326 31011	M2 UPPER RINSE TUBE	1
7	251 10031	WASH TEE ASSY UPPER/LOWER GLV/UD	1	18	400 20108	BRACKET DCV CLAMP	1
8	400 30073	SPINDLE M2 RINSE	2	19	3342	SOLENOID VALVE GL 1 WAY 90 DEG	1
9	ARP333	O-RING	1	20	8800	MS PAN POZI ZP M4 x 6	2
10	400 90076	SS RINSE TEE	1	21	400 20107	DCV BOTTOM BRACKET	1
11	8566	WASHER SPRING SS 304 M6	3	22	400 10132	DUAL CHECK VALVE ASSEMBLY	1

# 5 KW ASSY R/TANK 1/2" 2 THERMOSTATS

400 10117 11-11-05 1A



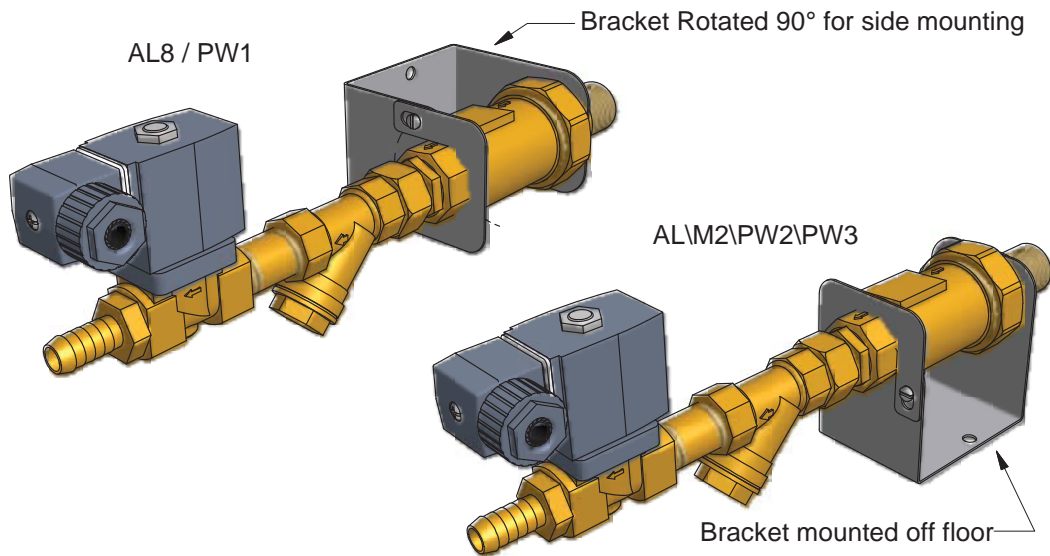
ITEM	CODE	DESCRIPTION	QTY
1	600 30088	THERMOSTAT TY60/R-95C [with E brkt]	2
2	3005	ELEMENT 5kw RINSE	1
3	3006	GASKET ELEMENT 54.0:1.6mm	1
4	600 80052	MS PAN SLOT ZP M3X6.	1
5	400 10114	RINSE TANK NEW SUB ASSY 1/2"	1

NOTE: 1. USE GRAPHITE JOINING COMPOUND ON BOTH SIDES OF GASKET BEFORE INSERTING ONTO ELEMENT.

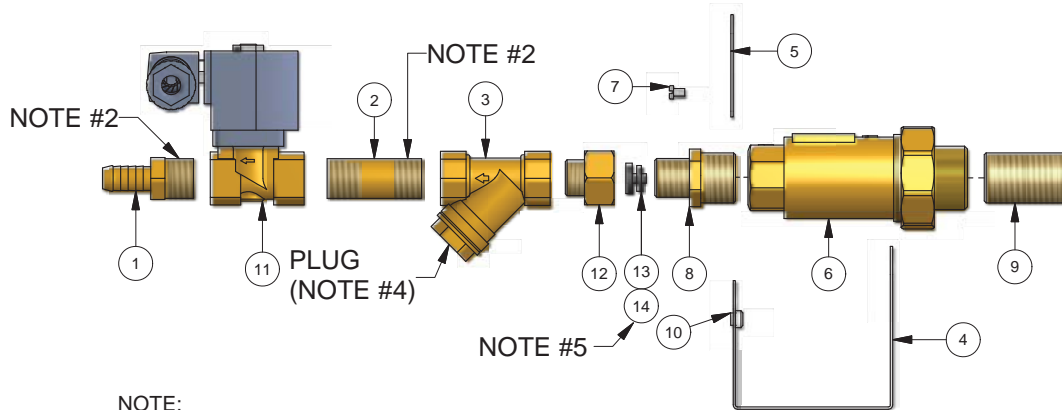
NOTE: 2. USE HEAT TRANSFER COMPOUND UNDER THERMOSTAT HEAD.

# ASSY RINSE SOLENOID M2/AL/PW(W)

400 10121 4/02/2010 REV 3-F



## EXPLODED PERSPECTIVE VIEW



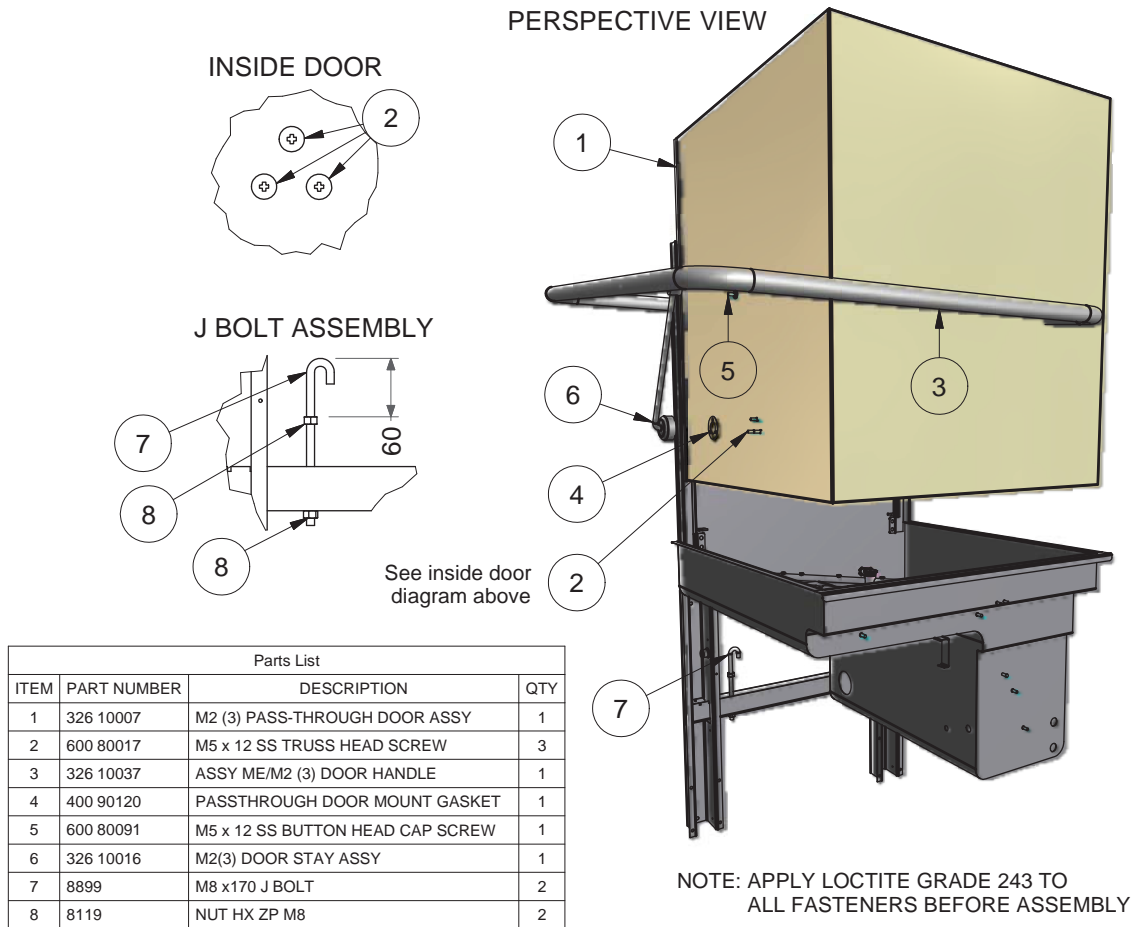
### NOTE:

1. USE LOCTITE 262 ON THIS THREAD
2. USE A131 PERMABOND ON ALL JOINTS
3. ENSURE SOLENOID, LINE STRAINER AND DCV FLOW DIRECTIONS ARE AS SHOWN
4. ANGLE LINE STRAINER PLUG 45 DEGREE FORWARD TO ALLOW REMOVAL.
5. USE 16L/MIN FLOW RESTRICTOR ON PW2 AND PW3 ONLY.

Parts List			
ITEM	PART NUMBER	DESCRIPTION	QTY
1	6153	TAILPIECE 1/2"x1/2" BSP	1
2	600 60003	NIPPLE 15mm x 50mm BRASS BARREL	1
3	6950	STRAINER LINE 1/2	1
4	400 20107	DCV BOTTOM BRACKET	1
5	400 20108	DCV TOP BRACKET	1
6	600 60108	DUAL CHECK VALVE	1
7	8800	MS PAN POZI ZP M4x6	2
8	6041	NIPPLE HEX REDUCING 20x15mm	1
9	600 60111	3/4" x 3/4" BRASS NIPPLE FOR DCV	1
10	8225	HANK BUSH 304 SS M4	2
11	600 30289	SOLENOID VALVE 1/2"	1
12	6053	CROX SOCKET	1
13	600 30309	FLOW RESTRICTOR 12L/MIN	1
14	600 30325	FLOW RESTRICTOR 16L/MIN	1

## M2 (3) DOOR LINK & J BOLT ASSY

326 10010 4/03/2011 REV 3-D



### INSTRUCTIONS FOR DOOR SPRING REPLACEMENT

**Hazard Warning - service work to be carried out only by qualified persons. Ensure machine is isolated from Electrical Supply.**

When replacing a broken door spring it is advisable that if possible the machine is disconnected from the services and moved out so work can be carried out from the back of the machine.

Begin with the door in the down position and remove item 5 M5 x 12 SS BUTTON HEAD CAPSCREW from the handle at both sides of the door. Whilst holding the door handle down, remove item 6 M2(3) DOOR STAY ASSY from the door handle at both sides of the door and then allow the door handle to rise to a vertical position.

**NOTE:- IT IS IMPORTANT THAT THE DOOR HANDLE IS HELD DOWN WHEN CARRYING OUT THE ABOVE STEPS AS RELEASING IT TOO SOON MAY CAUSE IT TO SWING UPWARDS IN AN UNCONTROLLED MANNER, CAUSING INJURY.**

Move to the back of the machine and remove any parts of broken spring and check the J bolt and the spring hanger bracket for signs of wear. If the spring hanger brkt is badly worn please refer to Technical Bulletin TB 9011 for the fitting of retrofit spring hanger brackets.

Hook the new spring in place on the J bolt and pull it up to hook onto the spring hanger brkt welded on the handle. If this is not possible the lower nut holding the J bolt in place should be unscrewed until the spring can be attached and then the lower nut should be tightened up to its original position.

Once the new spring is fitted the handle can be lowered so that the door stays can be refitted and the capscrows fitted and tightened up. The capscrows should have loctite or similar applied to them before fitting.

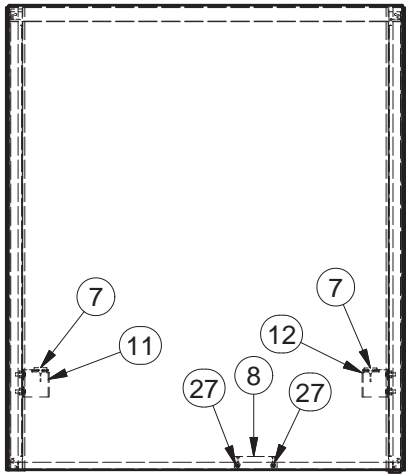
The door springs should be adjusted so that they hold the door against the door stops in the up position and the door does not lift by itself when in the down position.

If the machine cannot be moved out, the front panel must be removed and the lower nut on the J bolt accessed from the front of the machine. It will be necessary to immobilise the J bolt using vice grips clamped onto it to prevent it turning when adjusting the lower nut. The upper nuts should not be moved if at all possible.

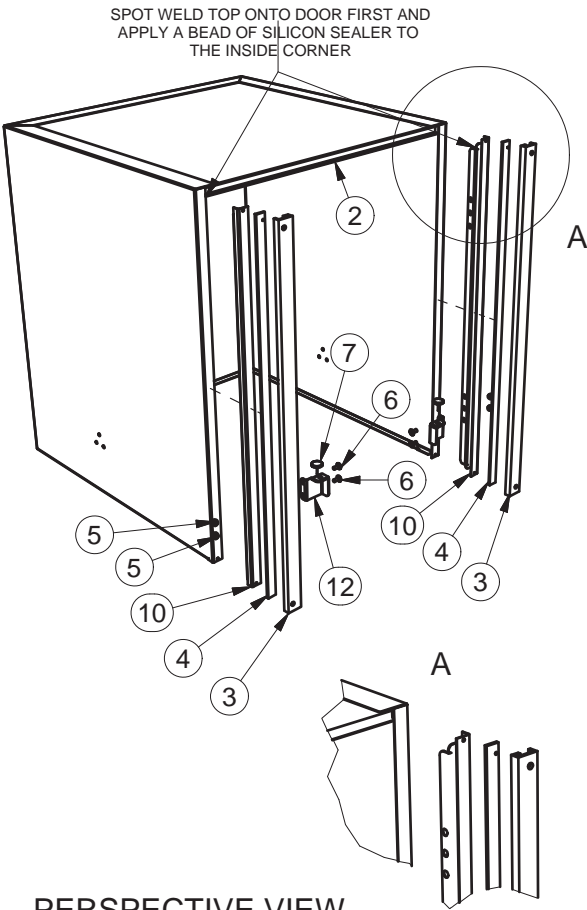
# M2 (3) PASS-THROUGH DOOR ASSY

326 10007 9/02/2010 REV 3-H

FRONT VIEW

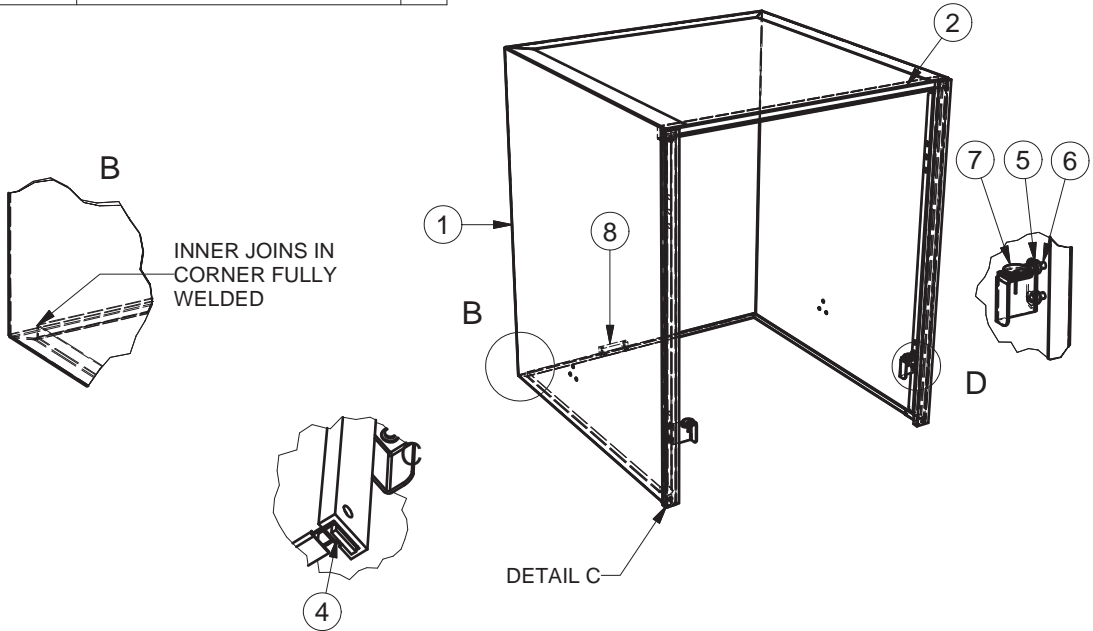


EXPLODED PERSPECTIVE VIEW



Parts List			
ITEM	PART NU	DESCRIPTION	QTY
1	326 20025	M2 (3) DOOR	1
2	326 20024	M2(3) DOOR UPPER INFILL	1
3	326 30004	M2 DOOR SLIDE	2
4	326 20007	M2(3) DOOR STRIP SPACER	2
5	600 80016	HANK BUSH 304 SS M5	4
6	600 80017	M5 x 12 SS TRUSS HEAD SCREW	4
7	1825	ANTI RATTLE BUTTON	2
8	600 30182	MAGNET	1
10	351 20074	AL(3) DOOR BACK RAIL SUPPORT	2
11	301 20009	M1(3) DOOR STOP BRACKET (LH)	1
12	301 20035	M1(3) DOOR STOP (RH)	1
27	600 80059	SCREW 6g 12mm T304 SS SELF TAP	2

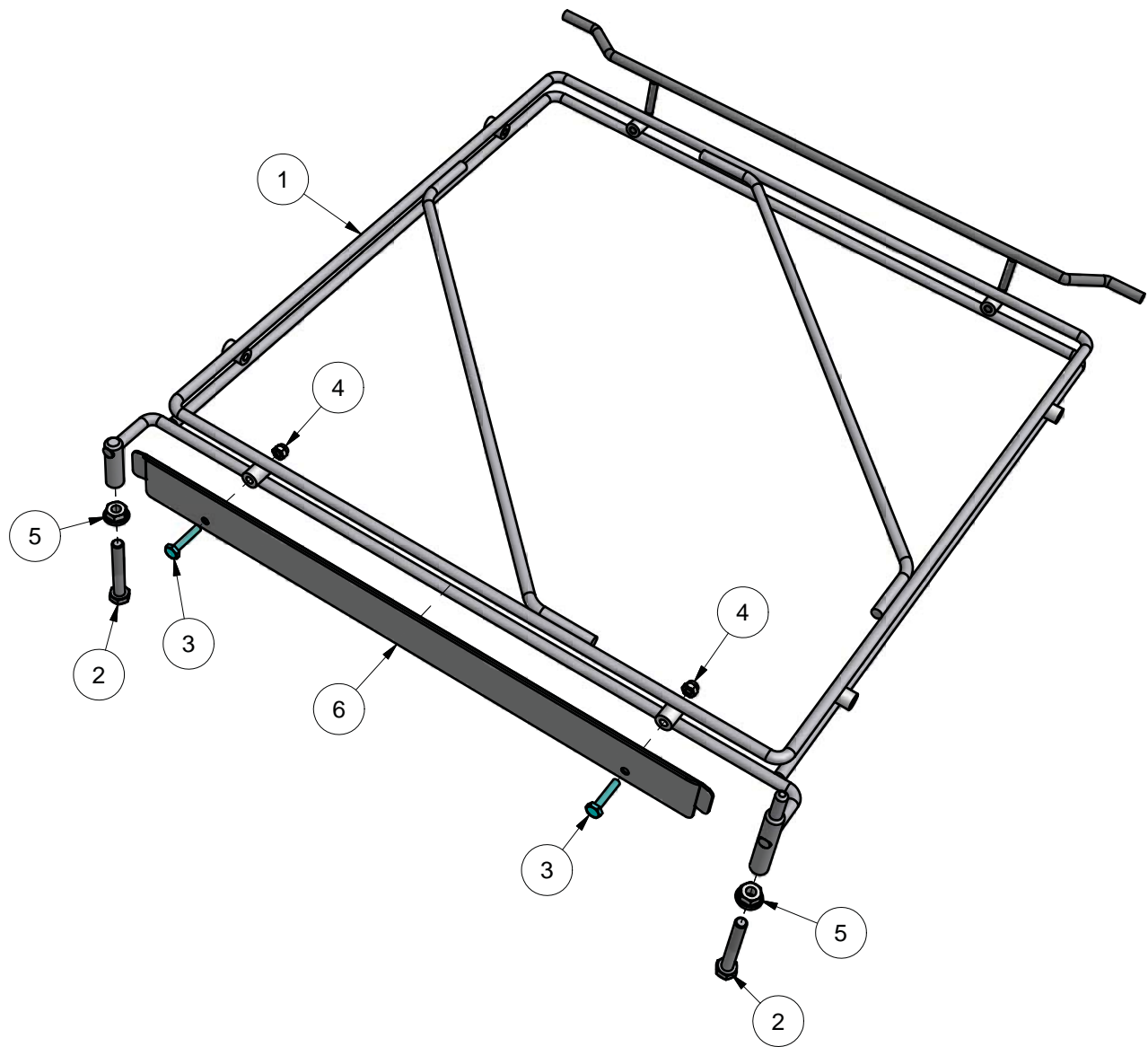
PERSPECTIVE VIEW



# M2 RACKSLIDE ASSY MK2

326 10011 8/10/2008 REV 3-C

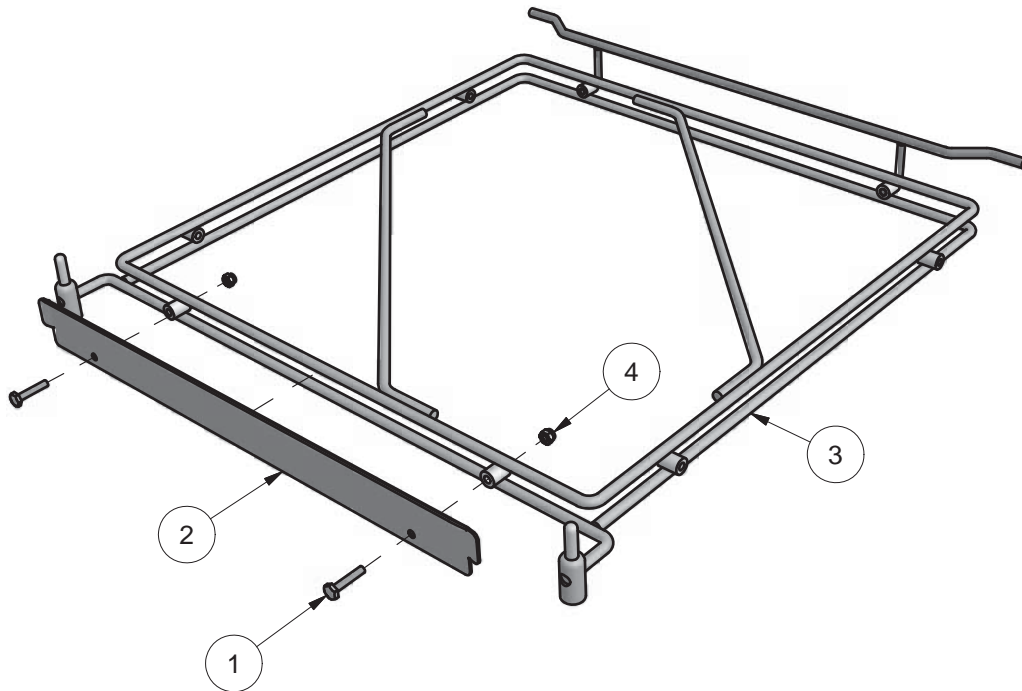
## PERSPECTIVE VIEW



Parts List			
ITEM	PART NUMBER	DESCRIPTION	QTY
1	326 10012	M2(3) RACK SLIDE SUB ASSY MK2	1
2	600 80097	M8x20 NYLON HEX HEAD MACHINE SCREW	2
3	600 80094	M5 x 25 SS HEX HD SETsCREW	2
4	600 80060	NUT NYLOC M5 S/S	2
5	600 80023	NUT SS 304 HEX M8	2
6	351 20060	AL RACK SLIDE GUIDE	1

## M2(3) RACK SLIDE ASSY MK1

326 13000 15/10/2008 REV 3-A

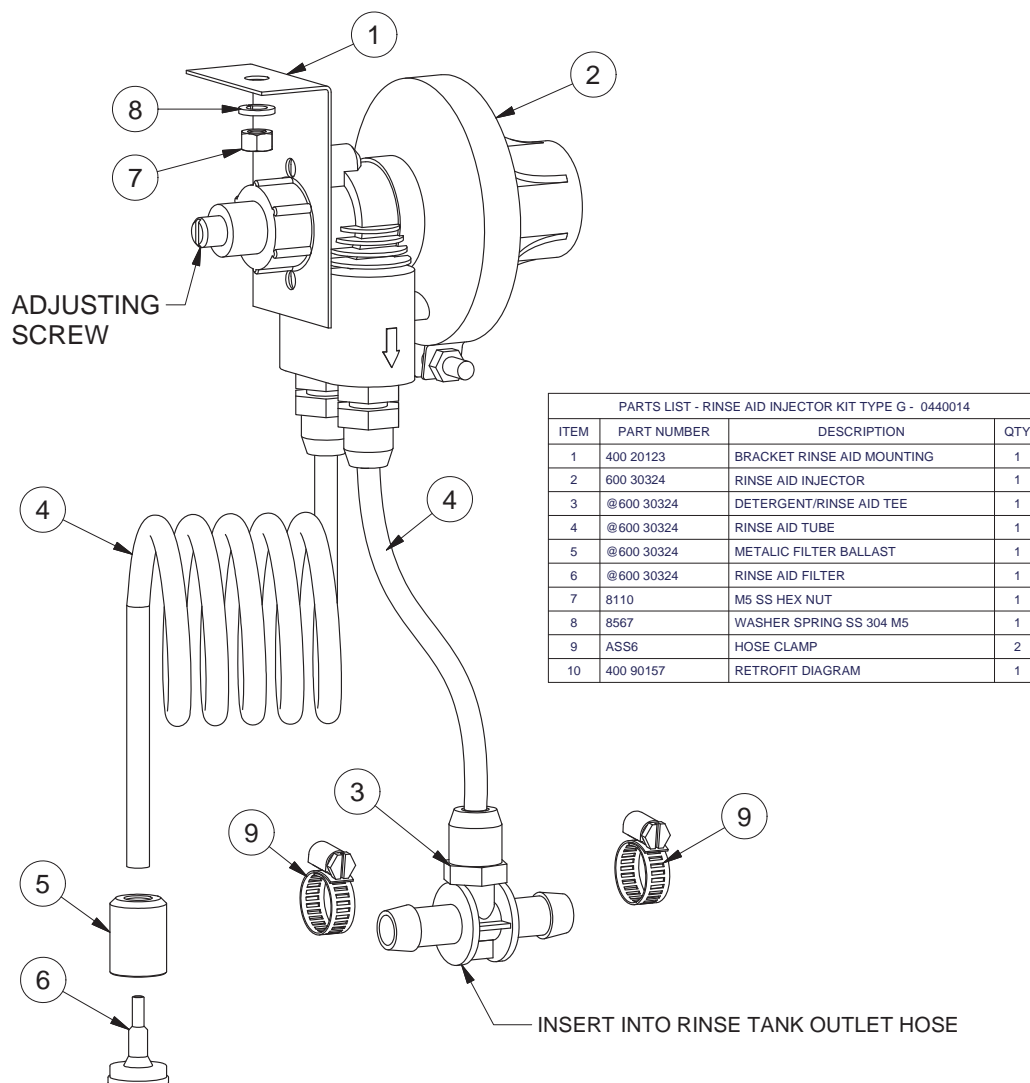


Parts List			
ITEM	PART NUMBER	DESCRIPTION	QTY
1	600 80094	M5 x 25 SS HEX HD SETsCREW	2
2	351 20060	AL RACK SLIDE GUIDE	1
3	326 13001	M2(3) RACK SLIDE SUB-ASSY MK1	1
4	600 80060	NUT NYLOC M5 S/S	2

# Appendices

## R/AID INJECTOR KIT TYPE G - P/N 0440014

400 90157 9/03/2010 REV 1-A



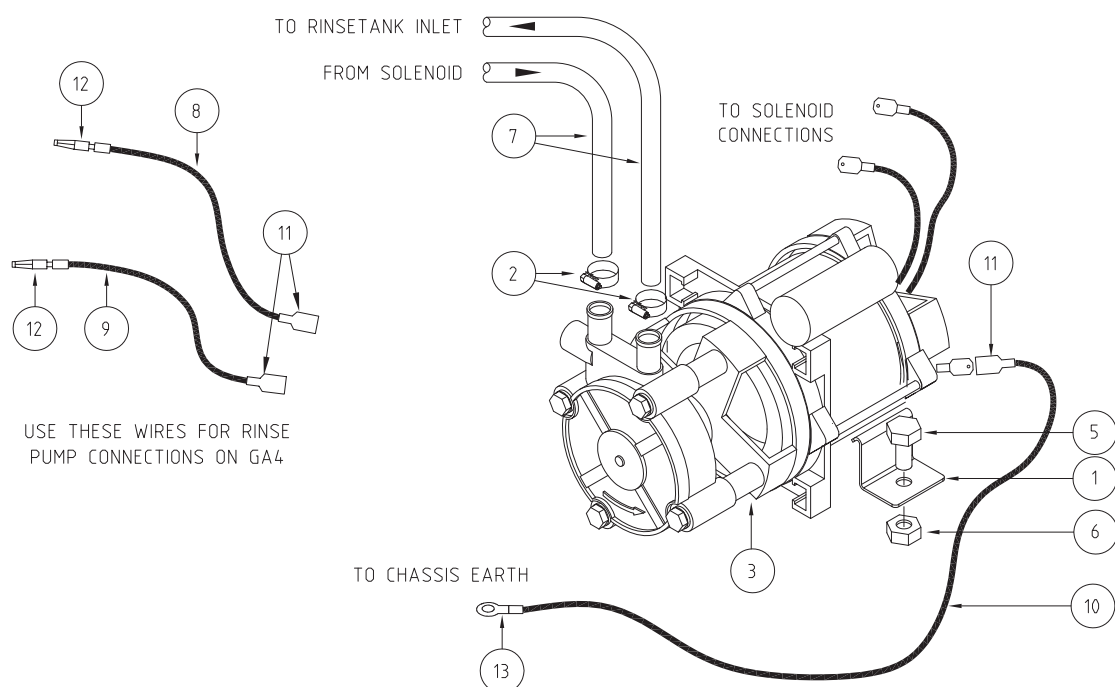
### INSTALLATION

1. MOUNT BRACKET 1 & INJECTOR 2 UNDERNEATH THE WASH TANK OF MACHINE ON THE STUD PROVIDED.
2. CUT RINSE TANK OUTLET HOSE AT AN APPROPRIATE POINT, INSERT PLASTIC TEE 3 BETWEEN HOSE ENDS AND SECURE WITH HOSE CLAMPS 9.
3. ASSEMBLE ALL COMPONENTS AS SHOWN ABOVE AND INSERT INJECTOR INLET TUBE INTO CHEMICAL CONTAINER.
4. RUN THE MACHINE. CHECK THE AMOUNT OF THE FLUID RISING UP INSIDE THE INLET TUBE DURING THE PULSE AT THE START OF THE RINSE CYCLE - A 75mm RISE WITHIN THE TUBE CORRESPONDS TO THE VOLUME OF 1 ml OF RINSE AID FLUID PER CYCLE. ROTATE ADJUSTING SCREW CLOCKWISE TO REDUCE FLOW AND ANTICLOCKWISE TO INCREASE FLOW. EVERY TURN OF THE ADJUSTING SCREW WILL INCREASE/DECREASE THE DOSE OF RINSE AID FLUID BY 0.4ml MORE/LESS. THE VOLUME OF RINSE AID FLUID WILL DEPEND ON FACTORS SUCH AS PRODUCT TYPE, WATER HARDNESS, ETC, BUT TYPICALLY 0.5ml PER LITRE OF WATER IS REQUIRED - REFER INSTALLATION INSTRUCTION FOR THE VOLUME OF RINSE WATER CONSUMED BY THE MACHINE PER CYCLE.



# RINSE PUMP KIT TYPE L - P/N 0440021

400 90142-1 31-05-10 1H



PARTS LIST - LGB RINSE PUMP KIT 0440021				
ITEM	CODE	DESCRIPTION	QTY	
1	400 20043	BRACKET -RINSE PUMP	2	
2	ASS06	HOSE CLIP ASS6	3	
3	600 30116	0.46kW RINSE PUMP WITH CAPACITOR 10uf	1	
4	H1909B	DOUBLE ADAPTOR	2	
5	88461	BOLT M6 x 12 S/S HEX	2	
6	8106	NUT M6 HEX SS	2	
7	600 60073	HOSE HOTAL 11mm x 19mm	0.7M	
8	600 30016	WIRE 0.75mm BLACK	0.5M	
9	600 30021	WIRE 0.75mm PINK	0.5M	
10	600 30014	WIRE 0.75mm GREEN/YELLOW	0.5M	
11	H3560	TERMINAL SPADE RED	3	
12	H3919	BULLET MALE RED	2	
13	H4115	RING TERMINAL RED	1	
14	600 60111	NIPPLE 3/4" WASHING MACHINE	1	
15	400 90142	RINSE PUMP KIT RETROFIT DIAGRAM	1	

1. Install rinse pump using the brackets and bolts provided
2. Remove hose from solenoid and reconnect it to rinse pump outlet using hose clamp provided
3. Connect hose #7 supplied in kit from pump inlet to solenoid using hose clamp provided
4. Earth pump on chasis earth stud with green\yellow wire provided in wiring loom.
5. Connect pump wiring according to electrical diagrams provided in service manual or schematic diagram, supplied with the machine.

400 90033-1 17/11/2008 REV 1-F



## Installation

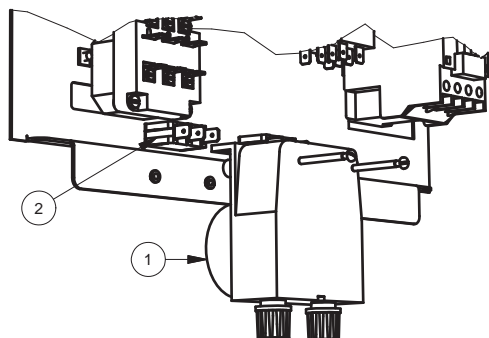
- Revision 1P

# DETERGENT PUMP KIT TYPE S - P/N 0440001

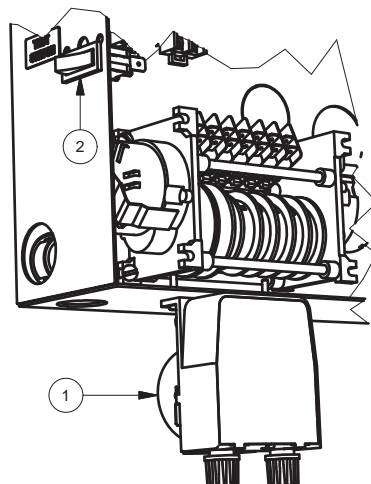
400 90033-2 17/11/2008 REV 1-F

## RETROFIT VARIANTS

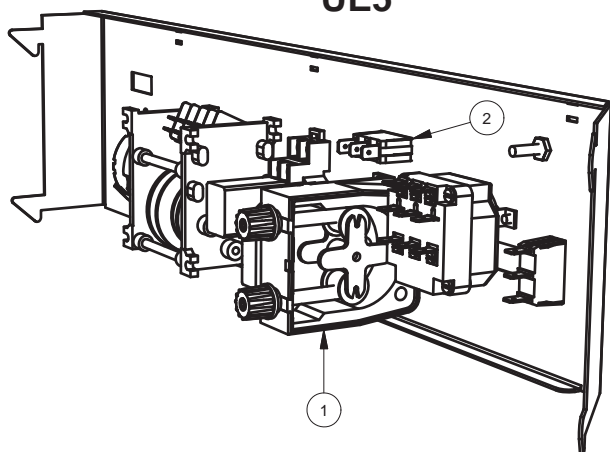
### M1 / ME / M2 / AL



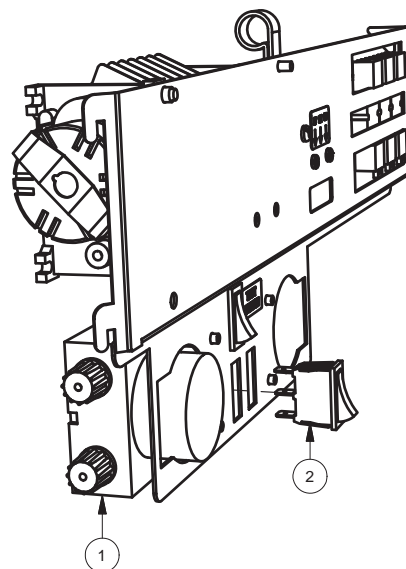
### AL8 / PW1 / PW2 / PW3



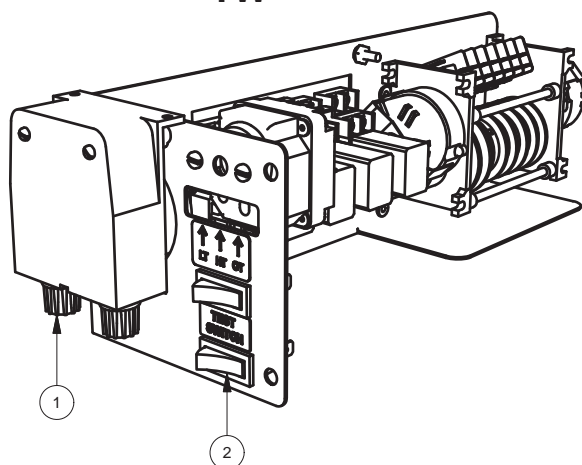
### UE5



### GLV5 \ UD5

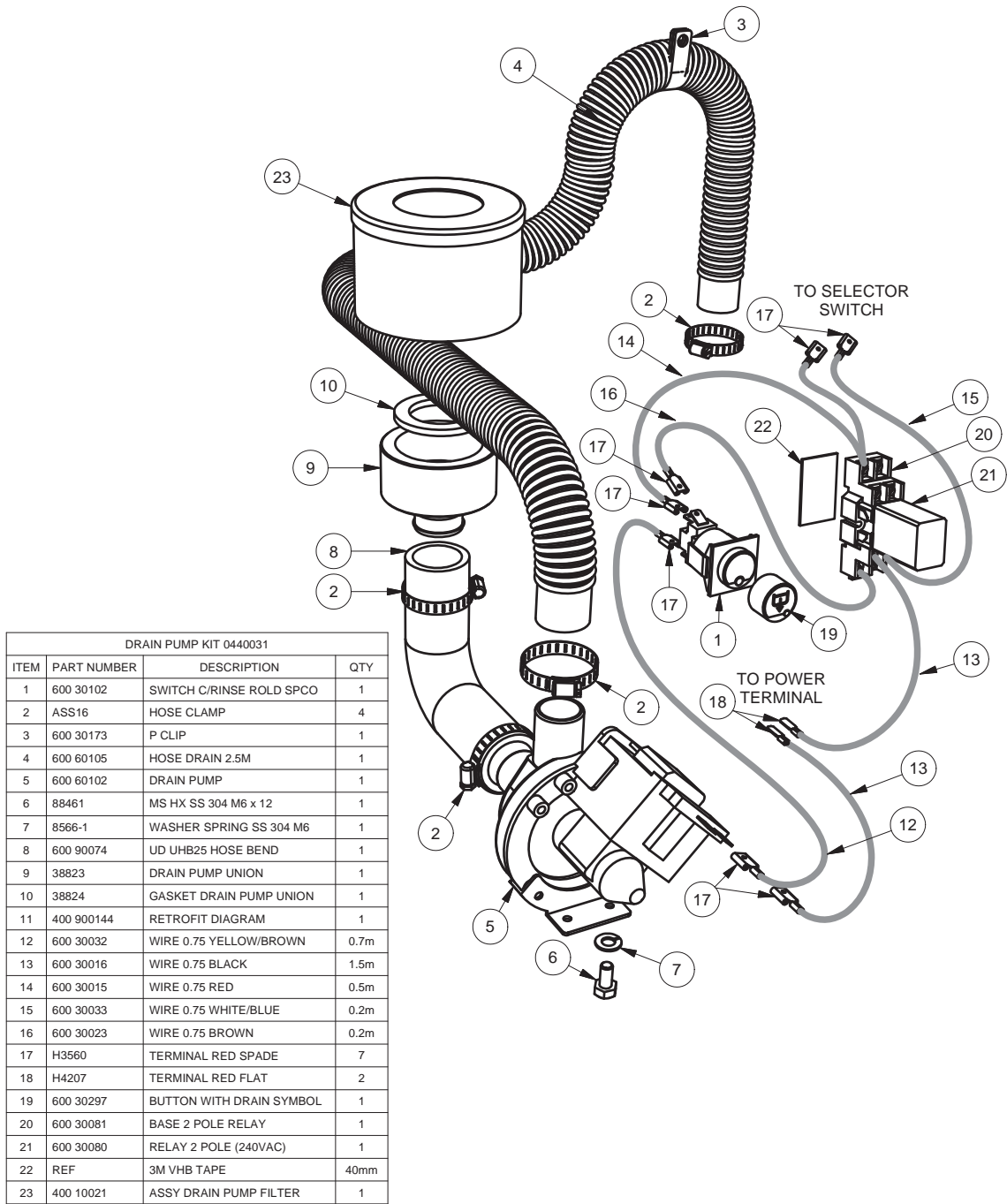


### TW



DRAIN PUMP KIT 0440031 - M2/AL/AL8/PW1-3

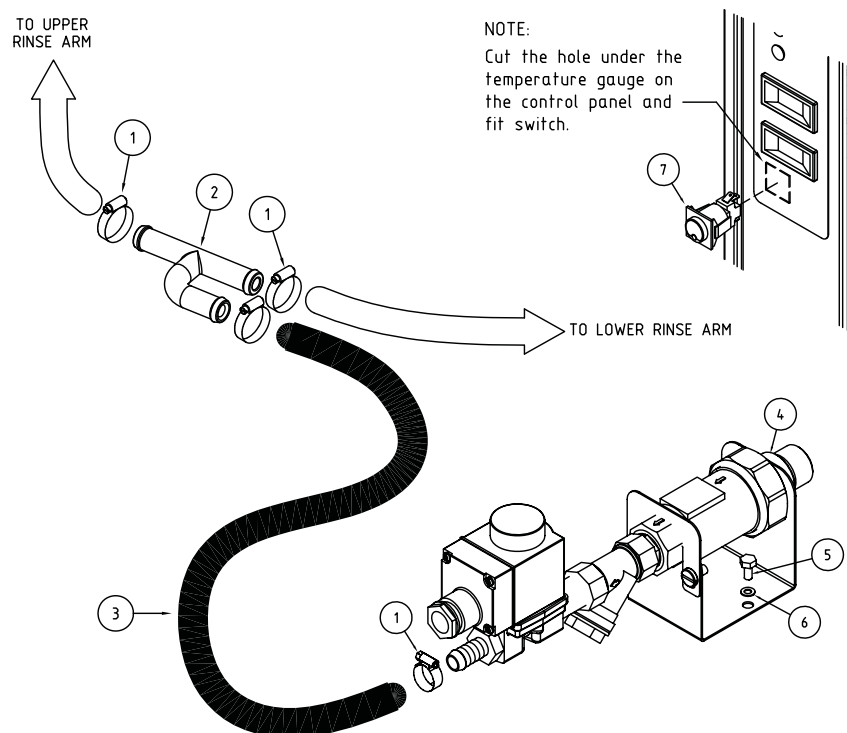
400 90144 24/11/2010 REV 1-F



1. Pre-assemble the drain pump with the flexible outlet hose #4, the inlet hose #8, the drain pump union #9. Secure the hoses with the supplied hose clamps #2.
2. Secure drain pump to base with M6 bolt #6 and the spring washer #7, provided in the kit.
3. Fit the drain union gasket #10 into the drain pump union #9. and screw the drain pump union #9 on to the drain waste of the machine.
4. Secure drain outlet hose above the water level using P clip #3 supplied in the kit.
5. Cut out the right side hole below the wash temperature gauge in the control panel label (if see from the front). and fit the drain switch #1. Fit the base and the relay #20 & 21 at the back of control panel using double-sided adhesive tape provided.
6. Wire the drain pump, the drain switch and the drain relay according to electrical diagrams, provided in service manual or schematic diagram, supplied with the machine.

# COLD RINSE KIT 0440042 - M2-3(W)

M2 30007 23-10-08 1D



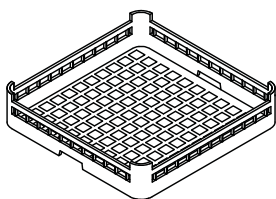
PARTS LIST - COLD RINSE RETROFIT KIT 0440042			
ITEM	CODE	DESCRIPTION	QTY
1	ASS 06	HOSE CLIP ASS 6	4
2	400 90076	SS RINSE TEE	1
3	600 60073	HOTOTAL HOSE 11mm X 19mm	1M
4	400 10121	ASSY RINSE SOLENOID M2/AL/PW1/PW2	1
5	88461	MS HX SS 304 M6 X 12	1
6	8566	WASHER SPRING SS 304 M6	1
7	600 30245	COLD RINSE SWITCH WITH SYMBOL	1
8	600 30017	BLUE 0.7mm APPLIANCE WIRE	3M
9	REF	TIMER ADJUSTING TOOL	1
10	080148	M2-3(W) COLD RINSE SCHEMATIC DIAGRAM	1
11	080248	M2-3(W) COLD RINSE WIRING DIAGRAM	1
12	M230007	M2-3(W) COLD RINSE RETROFIT DIAGRAM	1

1. Install Cold Rinse Solenoid and DCV assembly on base of machine.
2. Cut rinse hose between top & bottom arms and insert Rinse Tee # 2  
Connect Cold Rinse solenoid to Rinse Tee using hose # 3 and hose clamps # 1 supplied in the kit.
3. Fit cold rinse switch #7 on control panel as shown on the diagram.
4. Using timer adjusting tool, supplied in the kit, re-adjust timer cams T2, T3 and T7 according to the timing diagram on the drawing 080148.
5. Re-wire timer according to electrical diagrams 080148 and 080248 provided.
6. Using wires #8, supplied in the kit, wire cold rinse switch and cold solenoid according to electrical diagrams 080148 and 080248 provided.

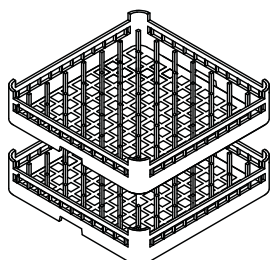
# Accessories

## M2(3)W ACCESSORIES

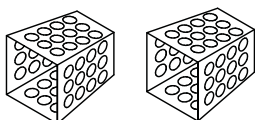
M2 (3) ACW 02-09-05 1A



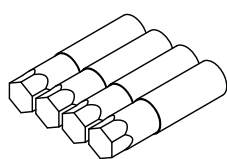
**C660702**  
**CUPRACK CB 500mm X 75mm high**



**C660312**  
**DISHRACK P12/18 500mm 18 DISH**



**C660503**  
**CUTLERY CONTAINER G**



**600 90023**  
**ASSY SL/M1/M2 LEG (INOX 50x240xM12)**

Information supplied in this manual is copyright. No part of this work may be reproduced or copied in any form or by any means, electronic or mechanical without the express permission of the author / publisher.



Distributed In  
Australia by

**MOFFAT®**

740 Springvale Road, Mulgrave 3170, Victoria, Tel 03 9518 3888 Fax 03 9518 3818

Service 1 800 622 216  
Parts 1 800 337 963

