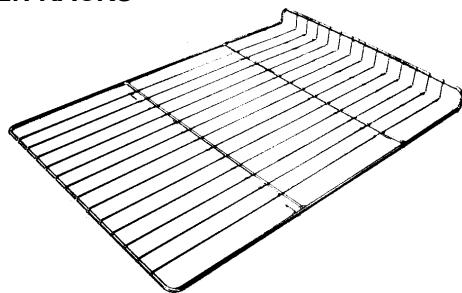


9. ACCESSORIES

OVEN RACKS



Part numbers:

| | |
|--------|----------|
| 015168 | E35-26 |
| 020993 | E35-30 |
| 025183 | E35GN-26 |

100 MM (FOUR INCH) LEG OPTION



Part number 021348 x 4

150 MM (SIX INCH) LEG OPTION



Part number 018724 x 4

DOUBLE STACKING KIT

(PART No. 021236[26"] / 021237[30"])



A26 STAINLESS STEEL STAND

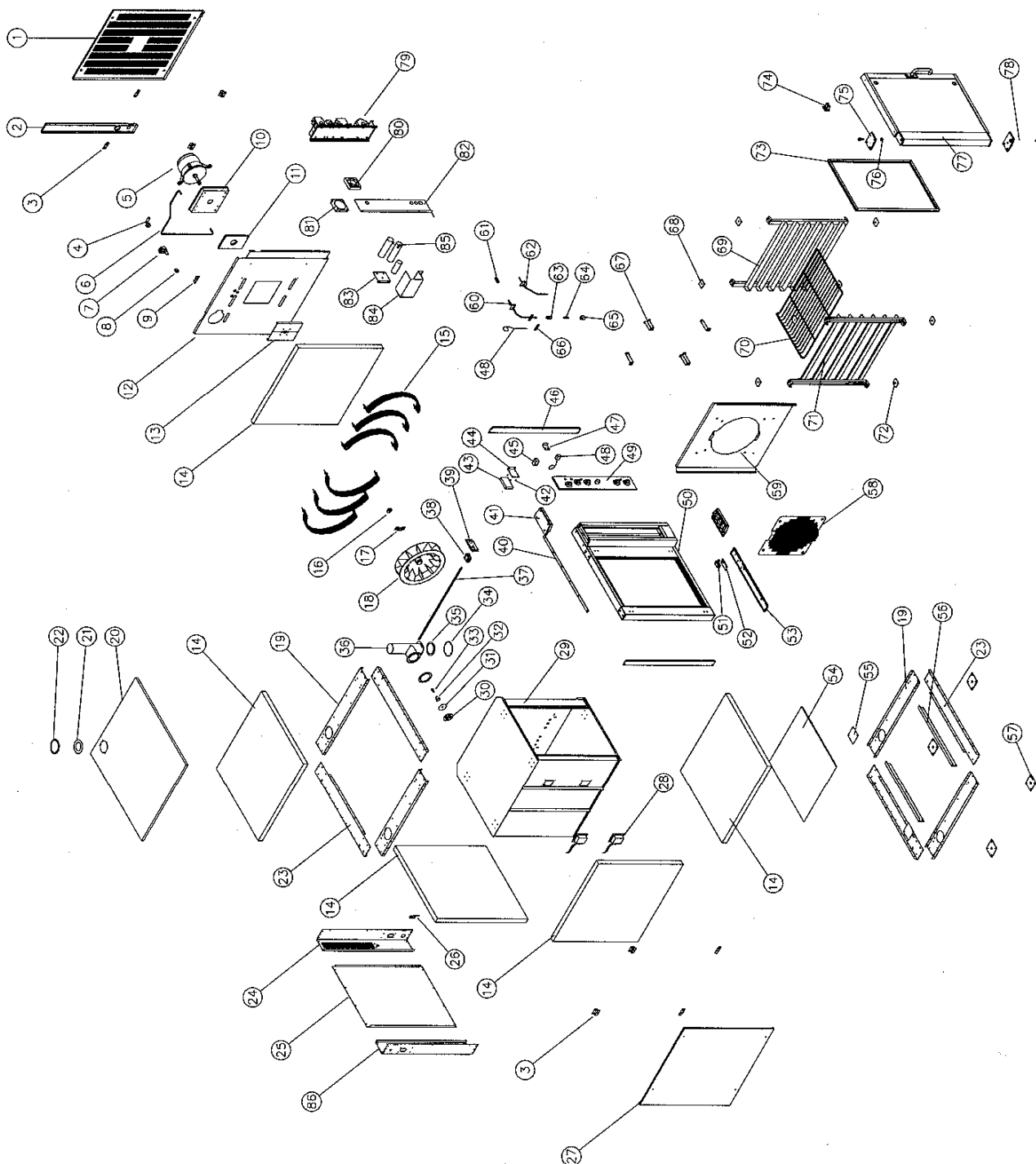


10. PARTS DIAGRAMS

| SECTION | PAGE NO. |
|---|-----------|
| 10.1 OVEN MAIN ASSEMBLY | 70 |
| 10.1.1 Main Assembly | 70 |
| 10.1.2 Front Upright Control Assembly | 74 |
| 10.1.3 Water Injection Assembly | 75 |
| 10.2 CONTROL PANEL ASSEMBLY | 76 |
| 10.3 GEAR PLATE ASSEMBLY | 77 |
| 10.3.1 Gear Plate Assembly 3 Phase Models (to lot no 0817999)..... | 77 |
| 10.3.2 Gear Plate Assembly 3 Phase Models (from lot no 0818001) | 79 |
| 10.3.3 Gear Plate Assembly 1 Phase Models (to lot no 0817999)..... | 81 |
| 10.3.4 Gear Plate Assembly 1 Phase Models (from lot no 0818001) | 83 |
| 10.4 OVEN DOOR ASSEMBLY | 87 |
| 10.4.1 Glass Door Assembly E35-26 / E35-30 (to lot no 0817999) | 87 |
| 10.4.2 Glass Door Assembly E35-26 / E35-30 (from lot no 0818001) | 88 |
| 10.4.3 Glass Door Assembly E35GN-26 (to lot no 0817999)..... | 89 |
| 10.4.4 Glass Door Assembly E35GN-26 (from lot no 0818001) | 90 |
| 10.4.5 Stainless Steel Door Assembly E35-26 / E35-30 (to lot no 0817999)..... | 91 |

10.1 OVEN MAIN ASSEMBLY

10.1.1 MAIN ASSEMBLY



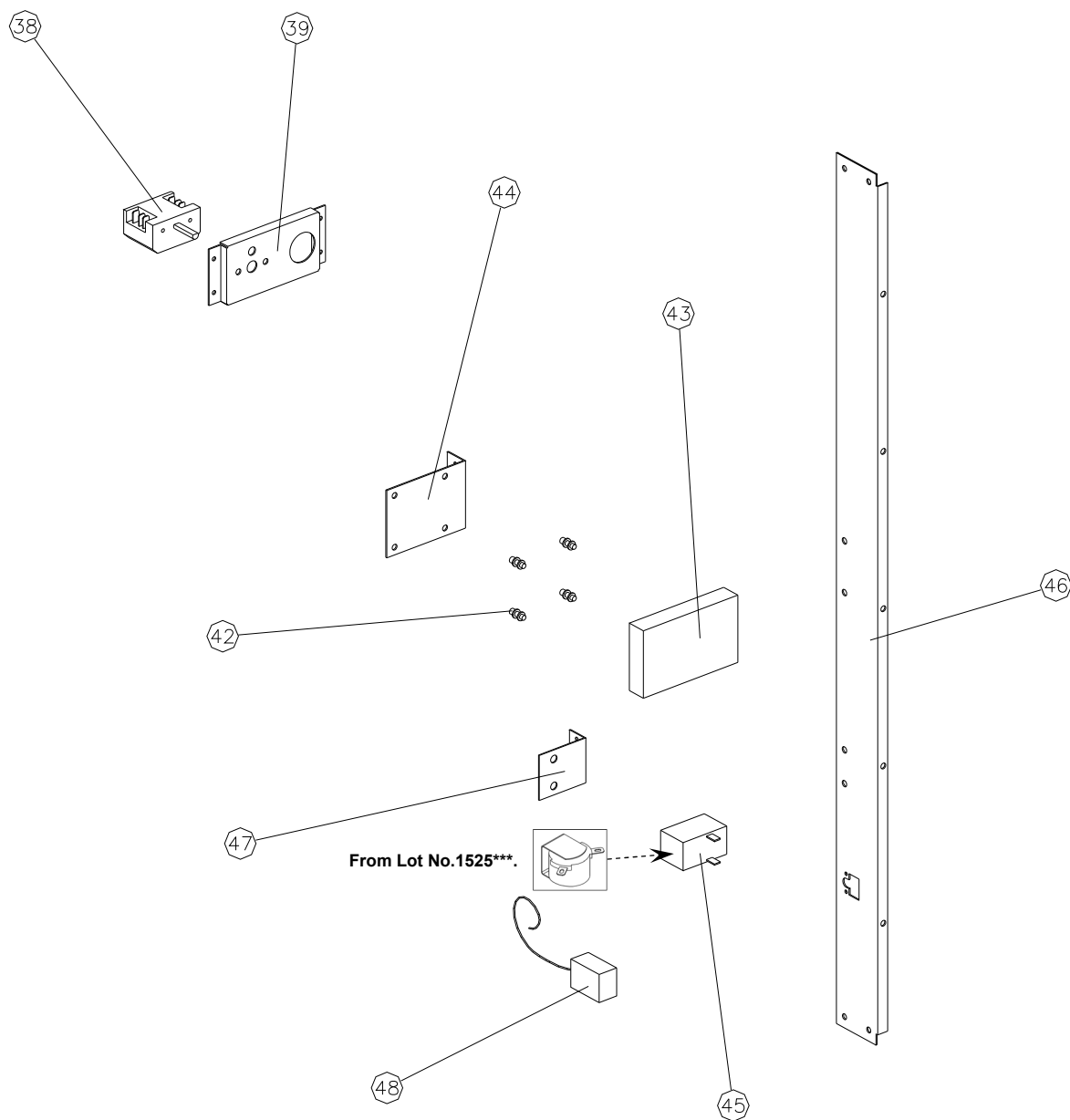
| Pos | Part No. | Description |
|-----|----------|---|
| 1 | 020788 | SIDE PANEL RH (E35-26 / E35GN-26 only, to Ser. No. 215839) (Replace with 023971) |
| | 023971 | SIDE PANEL RH (E35-26 / E35GN-26 only, from Ser. No. 215840) |
| | 020790 | SIDE PANEL RH (E35-30 only, to Ser. No. 215839) (Replace with 023972) |
| | 023972 | SIDE PANEL RH (E35-30 only, from Ser. No. 215840) |
| 2 | 020792 | SERVICE ENTRY PANEL |
| | 019213 | CABLE ENTRY BUSH (Not illustrated - to Ser. No. 205999) |
| 3 | 020785 | PANEL MOUNTING BRACKET |
| 4 | 021526 | WATER INLET ELBOW (Refer 10.1.3) |
| | 025922 | Adaptor Brass (not shown) (USA / Canada Only) |
| | 021527 | WATER INLET WASHER |
| 5 | 020745K | MOTOR (380-415V 50Hz 3ø) |
| | 020885K | MOTOR (220-240V 50Hz 1ø/3ø) |
| | 020886K | MOTOR (208-240V 60Hz 1ø/3ø) |
| | ----- | Motor Front Bearing - SKF 6204-2Z/C3LHT23. |
| | ----- | Motor Rear Bearing - NSK 6203Z. |
| | 025751 | FAN MOTOR HEAT FLINGER |
| 6 | 020860 | WATER SUPPLY TUBE (E35-26 / E35GN-26 only) (Refer 10.1.3) |
| | 020862 | WATER SUPPLY TUBE (E35-30 only) (Refer 10.1.3) |
| 7 | 020851 | WATER SOLENOID (Refer 10.1.3) |
| 8 | 020869 | CONNECTOR - 3/8"F x 1/4" COMPRESSION (Refer 10.1.3) |
| 9 | 020991 | MOUNTING BRACKET (Refer 10.1.3) |
| 10 | 020897 | MOTOR INSULATION PLATE |
| 11 | 020778 | MOTOR MOUNTING PLATE |
| 12 | 020797 | SIDE INSULATION PANEL (E35-26 / E35GN-26 only ,Up to Lot No. 0817999) |
| | 231798 | SIDE INSULATION PANEL (E35-26 / E35GN-26 only, From Lot No. 0818001) |
| | 020798 | SIDE INSULATION PANEL (E35-30 only, Up to Lot No. 0817999) |
| | 231808 | SIDE INSULATION PANEL (E35-30 only, From Lot No. 0818001) |
| 13 | 026638 | OVEN SIDE PLATE |
| 14 | 090416 | FIBREGLASS INSULATION 730x780x38 (E35-26 / E35GN-26 only) |
| | 090417 | FIBREGLASS INSULATION 730x880x38 (E35-30 only) |
| 15 | 020762 | ELEMENT - 220-240V 2000W (H,N,T only) |
| | 020763 | ELEMENT - 208-220V 2000W (P,X only) |
| | 022259 | ELEMENT - 208-220V 1250W (8kW units only - option) |
| | 015292 | SEALING WASHER |
| 16 | 020896 | MOTOR SHAFT SEAL |
| 17 | 020898 | MOTOR SEAL HOUSING |
| 18 | 025396 | FAN |
| 19 | 020780 | CHASSIS HORIZONTAL SIDE (E35-26 / E35GN-26 only) |
| | 020786 | CHASSIS HORIZONTAL SIDE (E35-30 only) |
| 20 | 020795 | TOP COVER (E35-26 only) |
| | 020796 | TOP COVER (E35-30 only) |
| | 025184 | TOP COVER (E35GN-26 only) |
| 21 | 022425 | VENT SEAL |
| 22 | 022426 | VENT SEAL FLANGE PLATE |
| 23 | 020781 | CHASSIS HORIZONTAL (E35-26 / E35-30 only) |
| | 025169 | CHASSIS HORIZONTAL (E35GN-26 only) |
| 24 | 023970 | CHASSIS VERTICAL REAR RH |
| 25 | 020791 | BACK PANEL (E35-26 / E35-30 only) |
| | 025189 | BACK PANEL (E35GN-26 only) |
| 26 | 020895 | CABLE GUIDE BRACKET |
| 27 | 020787 | SIDE PANEL LH (E35-26 / E35GN-26 only) |
| | 020789 | SIDE PANEL LH (E35-30 only) |
| 28 | 021351 | OVEN LAMP HOLDER (includes bulb) (Up to Lot No. 0817999) |
| | 232108 | OVEN LAMP HOLDER (does not include bulb) (From Lot No. 0818001) |
| | 021350 | OVEN LAMP BULB G4/20W (Up to Lot No. 0817999) |
| | 231814 | OVEN LAMP BULB G9/25W (From Lot No. 0818001) |
| | 021352 | OVEN LAMP - GLASS LENS |
| | 021354 | OVEN LAMP - GASKET |
| | 021353 | OVEN LAMP - SUPPORT FRAME |

| | | |
|----|---------|---|
| 29 | 004703 | OVEN WA - ENAMELLED (E35-26 only) |
| | 004704 | OVEN WA - ENAMELLED (E35-30 only) |
| | 004983 | OVEN WA - ENAMELLED (E35GN-26 only) |
| | 020874 | OVEN WA STAINLESS STEEL (E35-26 only) |
| | 020875 | OVEN WA STAINLESS STEEL (E35-30 only) |
| 30 | 020828 | VENT FLAP |
| 31 | 020827 | VENT OVER PRESSURE PLATE |
| 32 | 020819 | OVER PRESSURE SPRING |
| 33 | 041425 | SCREW - M4 x 6 PAN POZI |
| 34 | 016241 | VENT HOOD |
| 35 | 020824 | VENT GASKET |
| 36 | 020845 | VENT WA |
| 37 | 020821 | VENT OPERATING ROD (E35-30 only Up to Lot No. 0817999) |
| | 231810 | VENT OPERATING ROD (E35-30 only) From Lot No. 0818001) |
| | 020820 | VENT OPERATING ROD (E35-26 / E35GN-26 only Up to Lot No. 0817999) |
| | 231809 | VENT OPERATING ROD (E35-26 / E35GN-26 only From Lot No. 0818001) |
| 38 | 020822 | SELECTOR SWITCH (Refer 10.1.2 Up to Lot No. 0817999 Only) |
| 39 | 020834 | VENT SWITCH BRACKET (Refer 10.1. 2 Up to Lot No. 0817999) |
| | 231789 | VENT SWITCH BRACKET (From Lot No. 0818001) |
| 40 | 020761 | TOP BUTT STRAP |
| 41 | 020764 | CONTROL HOUSING CAP |
| | 020865 | SCREW CAP - BLACK |
| 42 | 018768 | STAND-OFF (Refer 10.1.2) |
| 43 | 020882K | THERMOSTAT - SOLID STATE (Refer 10.1.2) |
| 44 | 020775 | THERMOSTAT BOARD MOUNTING BRACKET (Refer 10.1.2) |
| 45 | 011794K | BUZZER (Refer 10.1.2) |
| 46 | 020783 | CHASSIS VERTICAL FRONT (Refer 10.1.2) |
| 47 | 014032 | BUZZER MOUNTING BRACKET (Refer 10.1.2) |
| 48 | 019369K | OVERTEMP THERMOSTAT KIT (Refer 10.1.2, 10.1.3) |
| | 013506 | GLAND WASHER |
| | 013507 | GLAND BUSH |
| | 013508 | GLAND NUT |
| | 020887 | SPLIT GLAND NUT ASSY (c/w Split nut, Seal & Washer) |
| | 020892 | GLAND BUSH MOUNTING PLATE |
| 49 | ----- | CONTROL PANEL ASSEMBLY (Refer 10.2) |
| 50 | 020841 | FACIA WA (E35-26 / E35-30 Up to Lot No. 0817999) |
| | 232080 | FACIA WA (E35-26 / E35-30 From Lot No. 0818001) |
| | 025173 | FACIA WA (E35GN-26 Up to Lot No. 0817999) |
| | 232121 | FACIA WA (E35GN-26 From Lot No. 0818001) |
| 51 | 020774 | MICROSWITCH |
| 52 | 020829 | MICROSWITCH MOUNTING BRACKET |
| 53 | 020830 | MICROSWITCH COVER PANEL (E35-26 / E35-30 Up to Lot No. 0817999) |
| | 232217 | MICROSWITCH COVER PANEL (E35-26 / E35-30 From Lot No. 0818001) |
| | 025172 | MICROSWITCH COVER PANEL (E35GN-26 Up to Lot No. 0817999) |
| | 232220 | MICROSWITCH COVER PANEL (E35GN-26 From Lot No. 0818001) |
| 54 | 020793 | BASE COVER SHEET (E35-26 only) |
| | 020794 | BASE COVER SHEET (E35-30 only) |
| | 025171 | BASE COVER SHEET (E35GN-26 only) |
| 55 | 020899 | BLANKING PLATE |
| 56 | 020784 | OVEN SUPPORT BRACKET (E35-26 / E35-30 only) |
| | 025170 | OVEN SUPPORT BRACKET (E35GN-26 only) |
| 57 | 230577 | LEG PLATE |
| | 021348 | LEG 100MM (Not illustrated) |
| | 230578 | LEG 150MM (Not illustrated) |
| 58 | 020881 | FAN GUARD |
| 59 | 020879 | FAN BAFFLE (E35-xxx-26 only) |
| | 020880 | FAN BAFFLE (E35-xxx-30 only) |
| 60 | 020857 | STEAM TUBE WA (Refer 10.1.3) |
| 61 | 020861 | COMPRESSION UNION ¼" (Refer 10.1.3) |
| 62 | 020883K | PROBE KIT (Refer 10.1.3) |
| | 020856 | GASKET |
| 63 | 016794 | MALE CONNECTOR (Refer 10.1.3) (From Ser. No. 261985) |
| | 020855 | FEMALE CONNECTOR (Refer 10.1.3) (Up to Ser. No. 261984) |

| | | |
|----|--------|--|
| 64 | 020852 | CHECK VALVE (Up to Ser. No. 261984) |
| 65 | 020853 | SPRAY BODY - WHIRLJET (Refer 10.1.3) |
| | 020856 | GASKET |
| 66 | 020890 | PROBE SECURING BRACKET (Refer 10.1.3) |
| 67 | 020844 | BAFFLE SPACER WA |
| 68 | 020802 | RACK LOCATION UPPER WA |
| 69 | 020810 | SIDE RACK 6 TRAY RH WA (E35-26 only) |
| | 020812 | SIDE RACK 6 TRAY RH WA (E35-30 only) |
| | 025180 | SIDE RACK 6 TRAY RH WA (E35GN-26 only) |
| | 023019 | SIDE RACK 8 TRAY RH WA (E35-30 only) |
| | 025090 | SIDE RACK 8 TRAY RH WA (E35-26 only) |
| | 025917 | SIDE RACK 4 TRAY RH WA (E35-26 only) |
| | 026787 | SIDE RACK 5 TRAY RH WA (E35-30 only) |
| 70 | 015168 | OVEN RACK (E35-26 only) |
| | 020993 | OVEN RACK (E35-30 only) |
| | 025179 | OVEN RACK (E35GN-26 only) |
| 71 | 020809 | SIDE RACK 6 TRAY LH WA (E35-26 only) |
| | 020811 | SIDE RACK 6 TRAY LH WA (E35-30 only) |
| | 025179 | SIDE RACK 6 TRAY LH WA (E35GN-26 only) |
| | 023018 | SIDE RACK 8 TRAY LH WA (E35-30 only) |
| | 025089 | SIDE RACK 8 TRAY LH WA (E35-26 only) |
| | 025916 | SIDE RACK 4 TRAY LH WA (E35-26 only) |
| | 026786 | SIDE RACK 5 TRAY LH WA (E35-30 only) |
| 72 | 020803 | RACK LOCATION LOWER WA |
| 73 | 231438 | DOOR SEAL (E35-26 / E35-30 only) |
| | 232119 | DOOR SEAL (E35GN-26 only) |
| 74 | 020754 | BOLT CATCH |
| 75 | 020737 | HINGE MOUNTING PLATE TOP (To Ser. No. 205999) |
| | 023050 | HINGE MOUNTING PLATE TOP (From Ser. No. 206000 ,Up to Lot No. 0817999) |
| | 230741 | HINGE MOUNTING PLATE TOP (From Lot No. 0818001) |
| | 020876 | TOP HINGE BOLT |
| | 020831 | DOOR PIVOT PIN (Up to Lot. No. 0817999) |
| | 230744 | DOOR PIVOT PIN (From Lot No. 0818001) |
| 76 | 020738 | HINGE BUSH (Up to Lot. No. 0817999) |
| | 230745 | HINGE BUSH (From Lot No. 0818001) |
| | 230746 | HINGE NUT (From Lot No. 0818001) |
| 77 | ----- | DOOR ASSEMBLY (Refer 10.4) |
| 78 | 020750 | HINGE MOUNTING PLATE BOTTOM (To Ser. No. 205999) |
| | 023051 | HINGE MOUNTING PLATE BOTTOM (From Ser No 206000,Up to Lot No. 0817999) |
| | 230742 | HINGE MOUNTING PLATE BOTTOM (From Lot No. 0818001) |
| 79 | ----- | GEAR PLATE (Refer 10.3) |
| 80 | 021156 | COOLING FAN |
| 81 | 021157 | COOLING FAN BRACKET |
| 82 | 021158 | HEAT BAFFLE (Up to Lot. No. 0817999) |
| | 231784 | HEAT BAFFLE (From Lot No. 0818001) |
| 83 | 021388 | CAPACITOR MOUNTING BRACKET (1ø ONLY) |
| 84 | 021389 | CAPACITOR SHIELD (1ø ONLY) |
| 85 | 021551 | CAPACITOR 10uF (H AND X) (50Hz 1ø ONLY) |
| | 021553 | CAPACITOR 20uF (H AND X) (50Hz 1ø ONLY) |
| | 021554 | CAPACITOR 30uF (H AND X) (50Hz 1ø ONLY) |
| | 021552 | CAPACITOR 12uF (P AND T) (60Hz 1ø ONLY) |
| | 021555 | CAPACITOR 35uF (P AND T) (60Hz 1ø ONLY) |
| | | For models after Lot No. 0818000, refer to Section 10.3.4 for single phase Capacitors. |
| 86 | 020782 | CHASSIS VERTICAL REAR LH |

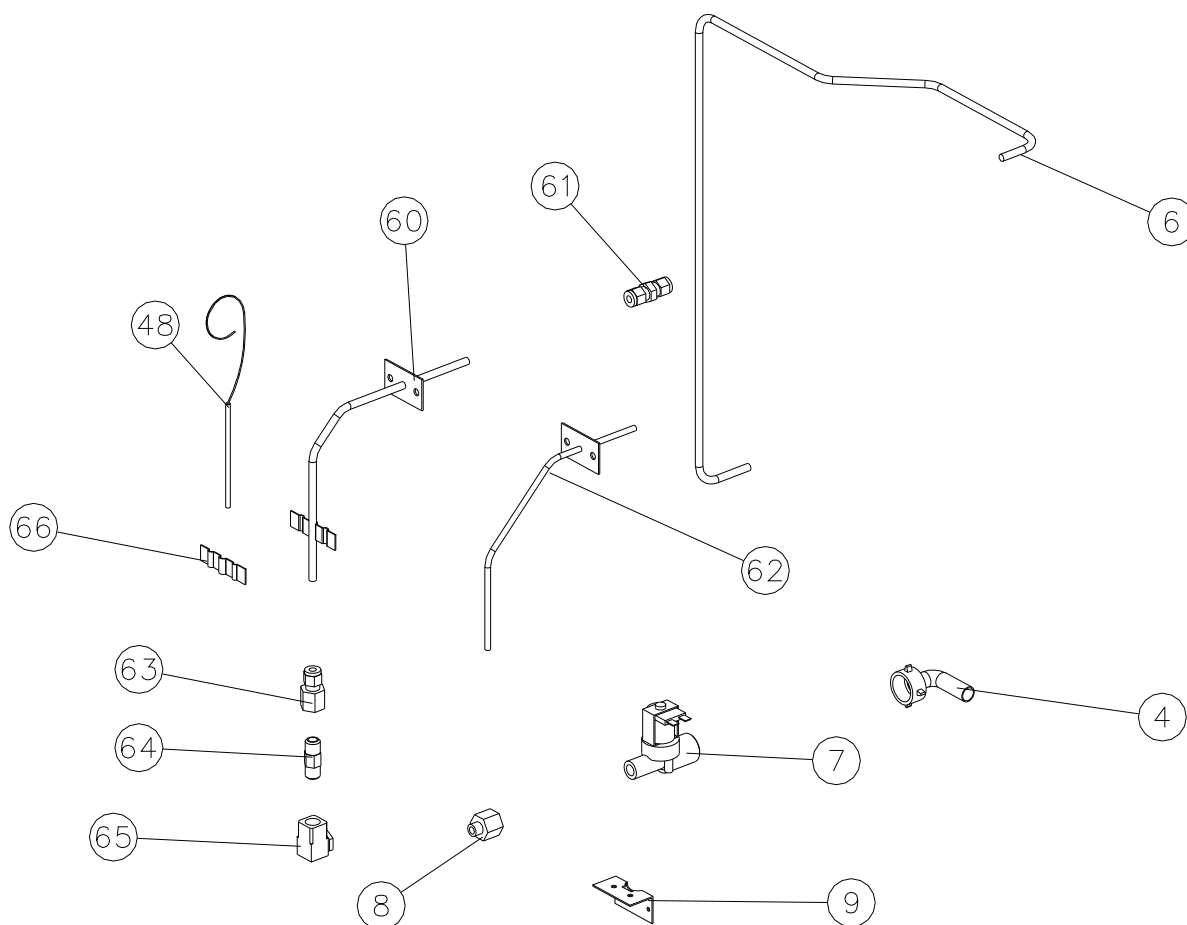
To Lot No.0817999

10.1.2 FRONT UPRIGHT CONTROL ASSEMBLY



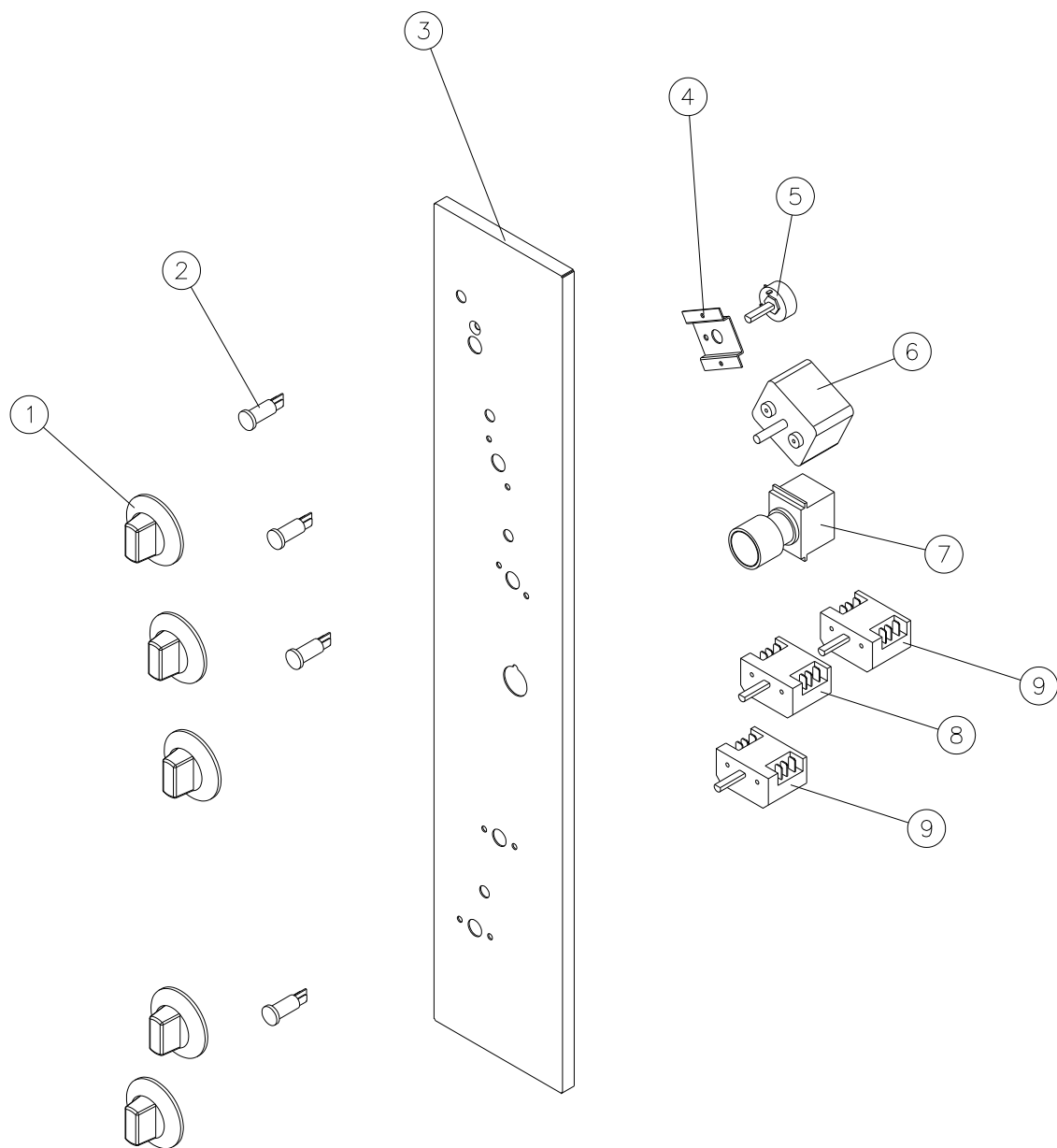
| Pos | Part No. | Description |
|-----|----------|--|
| 38 | 020822 | SELECTOR SWITCH (Up to Lot No. 0817999) |
| 39 | 020834 | VENT SWITCH BRACKET (Up to Lot No. 0817999) |
| | 231789 | VENT SWITCH BRACKET (From Lot No. 0818001) |
| 42 | 018768 | STAND-OFF |
| 43 | 020882K | THERMOSTAT - SOLID STATE (Kit includes Potentiometer) |
| 44 | 020775 | THERMOSTAT BOARD MOUNTING BRACKET |
| 45 | 011794K | BUZZER |
| 46 | 020783 | CHASSIS VERTICAL FRONT |
| 47 | 014032 | BUZZER MOUNTING BRACKET (Up to Lot No. 0817999) |
| | 231797 | BUZZER MOUNTING BRACKET (From Lot No. 0818001) |
| 48 | 019369K | OVERTEMP THERMOSTAT KIT |

10.1.3 WATER INJECTION ASSEMBLY



| Pos | Part No. | Description |
|-----|---|--|
| 4 | 021526 025922 | WASHER INLET ELBOW (c/w Washer) ADAPTOR BRASS (not shown) (USA / Canada Only) |
| 6 | 020860 020862 | WATER SUPPLY TUBE (E35-xxx-26 only) WATER SUPPLY TUBE (E35-xxx-30 only) |
| 7 | 020851 | WATER SOLENOID |
| 8 | 020869 | CONNECTOR - $\frac{3}{8}$ "F x $\frac{1}{4}$ " COMPRESSION |
| 9 | 020991 | MOUNTING BRACKET |
| 48 | 019369K 013506 013507 013508 020887 020892 | OVERTEMP THERMOSTAT KIT GLAND WASHER GLAND BUSH GLAND NUT SPLIT GLAND NUT ASSY (c/w Split Nut, Seal & Washer) GLAND BUSH MOUNTING PLATE |
| 60 | 020857 | STEAM TUBE WA |
| 61 | 020861 | COMPRESSION UNION $\frac{1}{4}$ " |
| 62 | 020883K 020856 | PROBE KIT GASKET |
| 63 | 016794 020855 | MALE CONNECTOR (From Ser. No. 261985) FEMALE CONNECTOR (To Ser. No. 261984) |
| 64 | 020852 | CHECK VALVE (To Ser. No. 261984) |
| 65 | 020853 020856 | SPRAY BODY - WHIRLJET GASKET |
| 66 | 020890 | PROBE SECURING BRACKET |

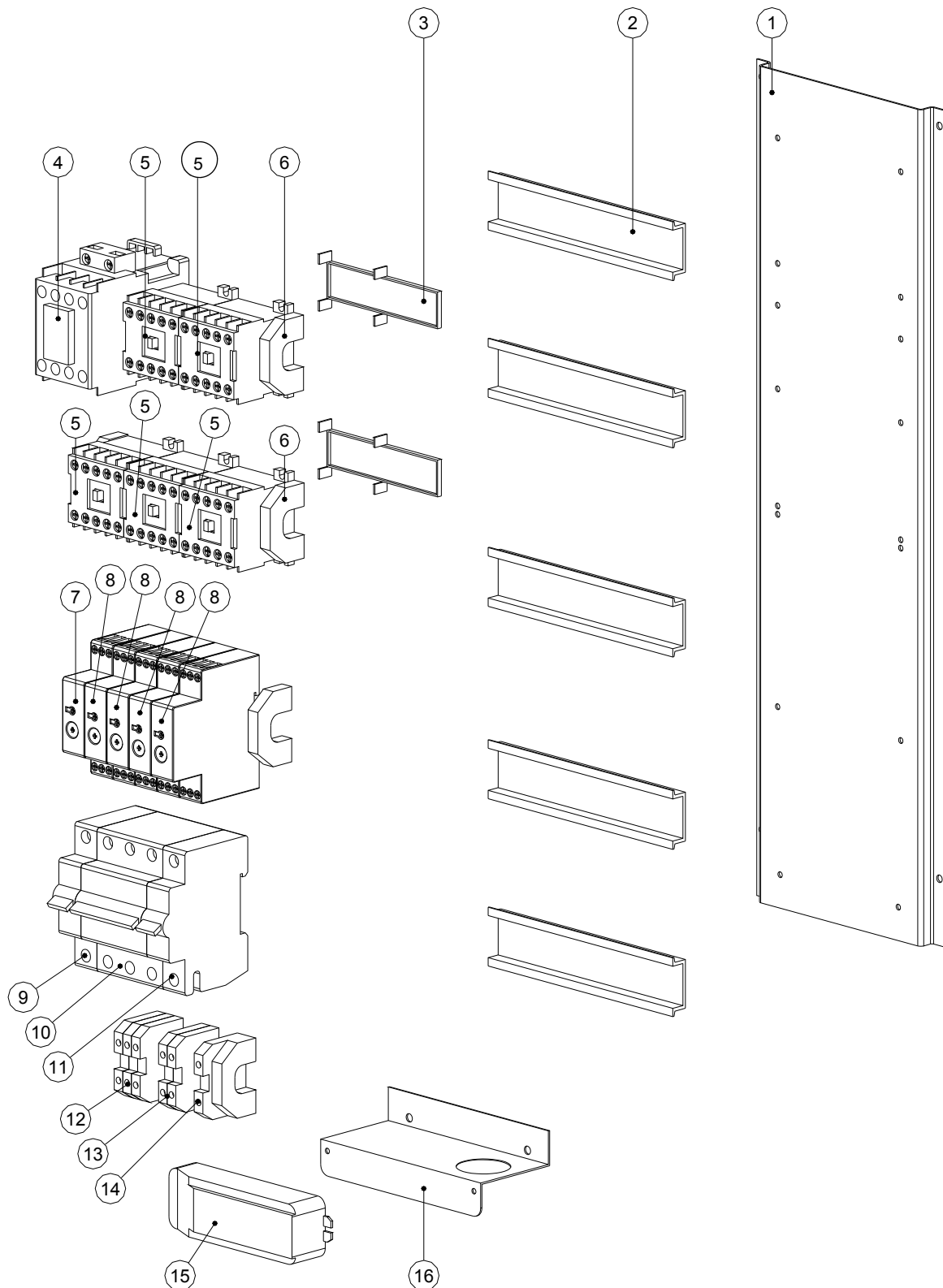
10.2 CONTROL PANEL ASSEMBLY



| Pos | Part No. | Description |
|-----|----------|--|
| 1 | 020823 | KNOB (Vent) |
| | 020848 | COMPRESSION RING |
| 2 | 020849 | NEON INDICATOR |
| 3 | 004705 | CONTROL PANEL °F (Up to Lot No. 0817999) |
| | 231812 | CONTROL PANEL °F (From Lot No. 0818001) |
| | 004706 | CONTROL PANEL °C (Up to Lot No. 0817999) |
| | 231819 | CONTROL PANEL °C (From Lot No. 0818001) |
| 4 | 020976 | POTENTIOMETER BRACKET |
| 5 | 020985K | POTENTIOMETER |
| 6 | 011760 | TIMER - (60 Minute) |
| 7 | 020893 | STEAM SWITCH ASSEMBLY (Up to Lot No 0817999) |
| | 232411 | STEAM SWITCH ASSEMBLY (From Lot No 0818000) |
| 8 | 020888 | SELECTOR SW. (Fan Speed) |
| 9 | 020822 | SELECTOR SWITCH (Fan Speed & Power) |

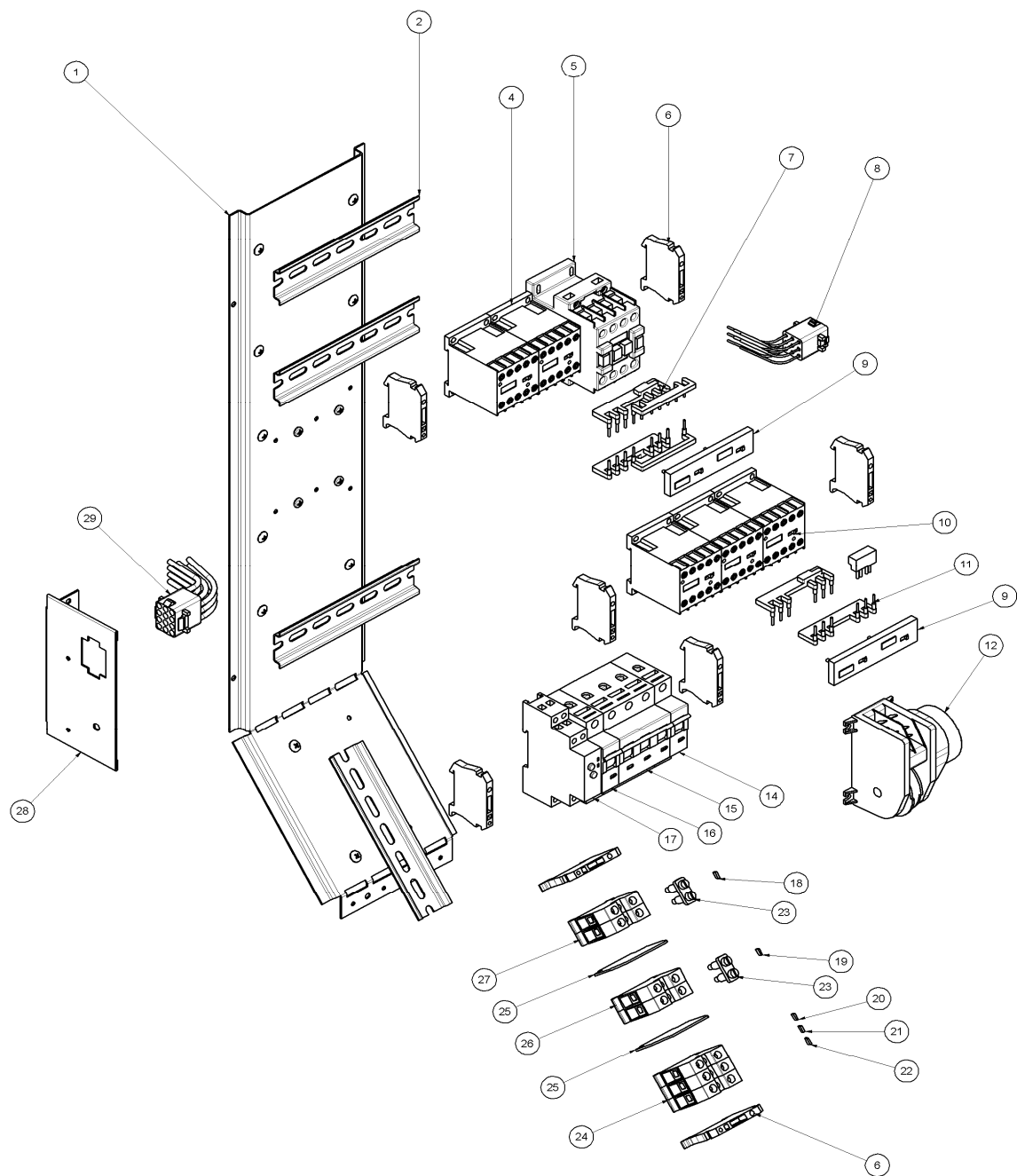
10.3 GEAR PLATE ASSEMBLY

10.3.1 GEAR PLATE ASSEMBLY (3 PHASE MODELS ONLY) Up to lot number 0817999



| Pos | Part No. | Description |
|------------|-----------------|--|
| 1 | 020891 | GEAR PLATE |
| 2 | 020990 | DIN RAIL |
| 3 | 020769 | CONTACTOR INTERLOCK (C2&C3 AND C5&C6) |
| 4 | 015966 | HEATING CONTACTOR 50Hz |
| | 020974 | HEATING CONTACTOR 50Hz (X253 ONLY) |
| | 020772 | HEATING CONTACTOR 60Hz |
| 5 | 020768 | MOTOR CONTACTOR |
| 6 | 020995 | END ANCHOR |
| 7 | 020863 | TIMER - FAN DIRECTION (TO Ser. No. 204012) |
| | 023059 | TIMER - FAN DIRECTION (FROM Ser. No. 204013) |
| 8 | 020773 | TIMER - FAN DWELL / STEAM DOSE (TO Ser. No. 204012) |
| | 023058 | TIMER - FAN DWELL / STEAM DOSE (FROM Ser. No. 204013) |
| 9 | 020770 | SHUNT TRIP (VYNKIER) (50Hz to Ser. No. 230810) |
| | 021345 | SHUNT TRIP (AB) (50Hz FROM Ser. No. 230811; 60Hz All) |
| 10 | 020776 | CIRCUIT BREAKER - 3ø 25A (VYNKIER) (To Ser. No. 230810) |
| | 021563 | CIRCUIT BREAKER - 3ø 25A (AB) (From Ser. No. 230811) |
| | 020975 | CIRCUIT BREAKER - 3ø 40A (AB) (263 & 253 UNITS ONLY) |
| 11 | 020777 | CIRCUIT BREAKER - 6A (VYNKIER) (50Hz To Ser. No. 230810) |
| | 021344 | CIRCUIT BREAKER - 6A (AB) (50Hz From Ser. No. 230811; 60Hz All) |
| 12 | 025715 | TERMINAL BLOCK - M10 RED (From Ser. No. 261183) |
| | 020999 | TERMINAL BLOCK - M6 RED (To Ser. No. 261182) |
| 13 | 025714 | TERMINAL BLOCK - M10 GREY (From Ser. No. 261183) |
| | 020998 | TERMINAL BLOCK - M6 GREY (To Ser. No. 261182) |
| | 025716 | CENTRE JUMPER - 2 POLE M10 (From Ser. No. 261183) |
| | 020996 | CENTRE JUMPER - 2 POLE M6 (To Ser. No. 261182) |
| 14 | 025713 | TERMINAL BLOCK - M10 GREEN (From Ser. No. 261183) |
| | 020997 | TERMINAL BLOCK - M6 GREEN (To Ser. No. 261182) |
| 15 | 020213 | LIGHTING TRANSFORMER |
| 16 | 021159 | TRANSFORMER BRACKET |

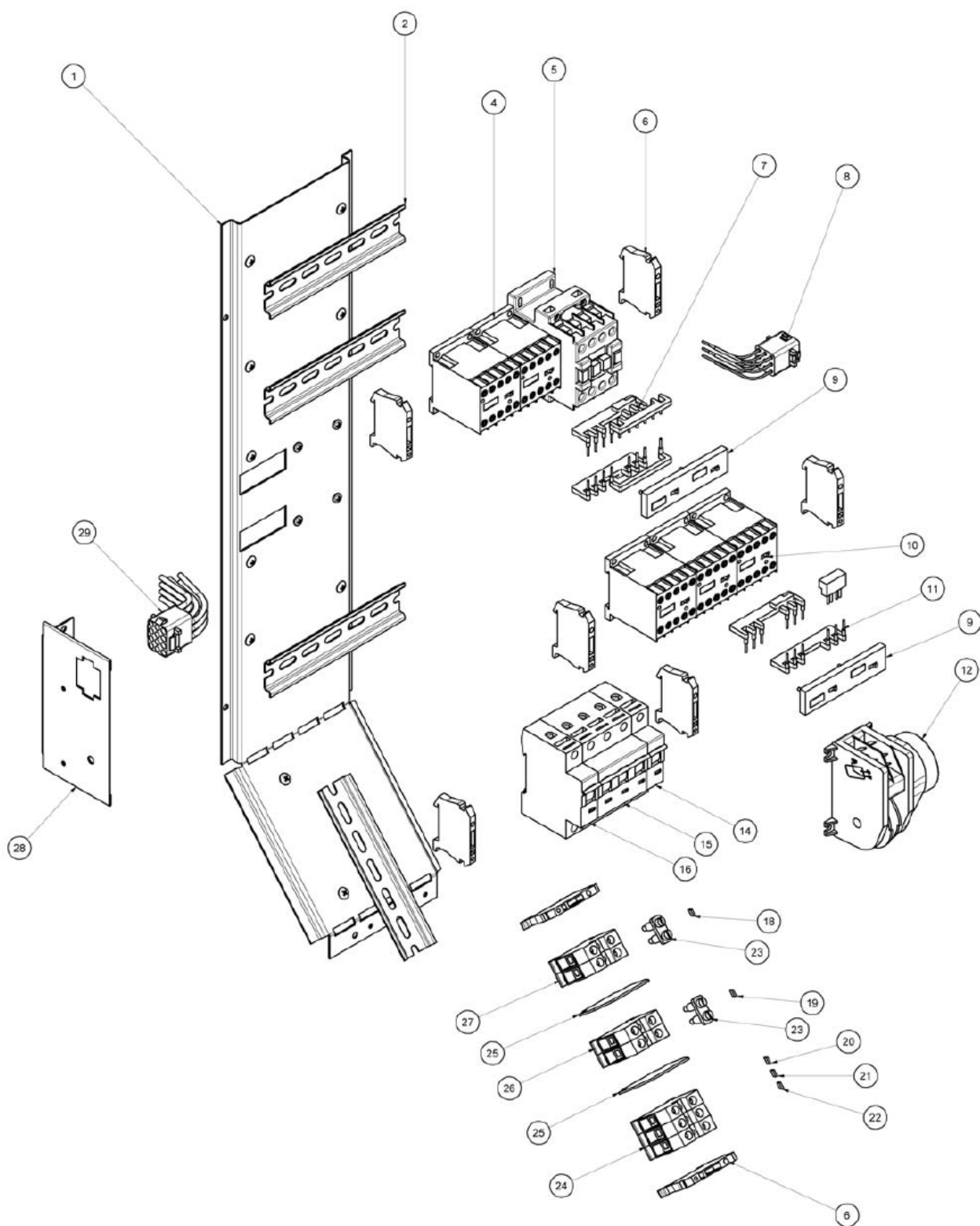
10.3.2 GEAR PLATE ASSEMBLY (3 PHASE MODELS ONLY) From lot number 0818001



| Pos | Part No | Description |
|-----|---------|--|
| 1 | 231510 | GEAR PLATE |
| 2 | 020990 | DIN RAIL |
| 4 | 231742 | CONTACTOR 11BG0601A230 |
| 5 | 231739 | CONTACTOR LOVATO BF1810A230 (3 phase 380-415 Volts Models) |
| | 231740 | CONTACTOR 11BF3200A230 (3 phase 208-240 Volt Models) |
| 6 | 020995 | END ANCHOR |
| 7 | 231745 | REVERSING STARTER KIT SMX9022 |
| 8 | 232466 | MOTOR WIRING LOOM |
| 9 | 231743 | CONTACTOR INTERLOCK 11BGX5000 |
| 10 | 231741 | CONTACTOR No. 11BG0610A230 |
| 11 | 231745 | REVERSING STARTER KIT SMX9022 |
| 12 | 024567 | MOTOR TIMER |
| 14 | 232407 | CIRCUIT BREAKER 6A |
| 15 | 232408 | CIRCUIT BREAKER 25A 3PH. |
| 16 | 232410 | SHUNT TRIP |
| 17 | 231748 | ON DELAY TIMER 24-240VAC |
| 18 | 021229 | TERMINAL MARKING TAG - E |
| 19 | 021228 | TERMINAL MARKING TAG - N |
| 20 | 021227 | TERMINAL MARKING TAG - L3 |
| 21 | 021226 | TERMINAL MARKING TAG - L2 |
| 22 | 021225 | TERMINAL MARKING TAG - L1 |
| 23 | 022297 | CENTER JUMPER 2 POLE |
| 24 | 231759 | TERMINAL BLOCK 16mm RED |
| 25 | 022296 | PARTITION PLATE |
| 26 | 022295 | TERMINAL BLOCK 16mm GREY |
| 27 | 231760 | TERMINAL BLOCK 16mm GREEN |
| 28 | 231511 | CONNECTION BRACKET |
| 29 | 232577 | WIRE LOOM GEAR PLATE |

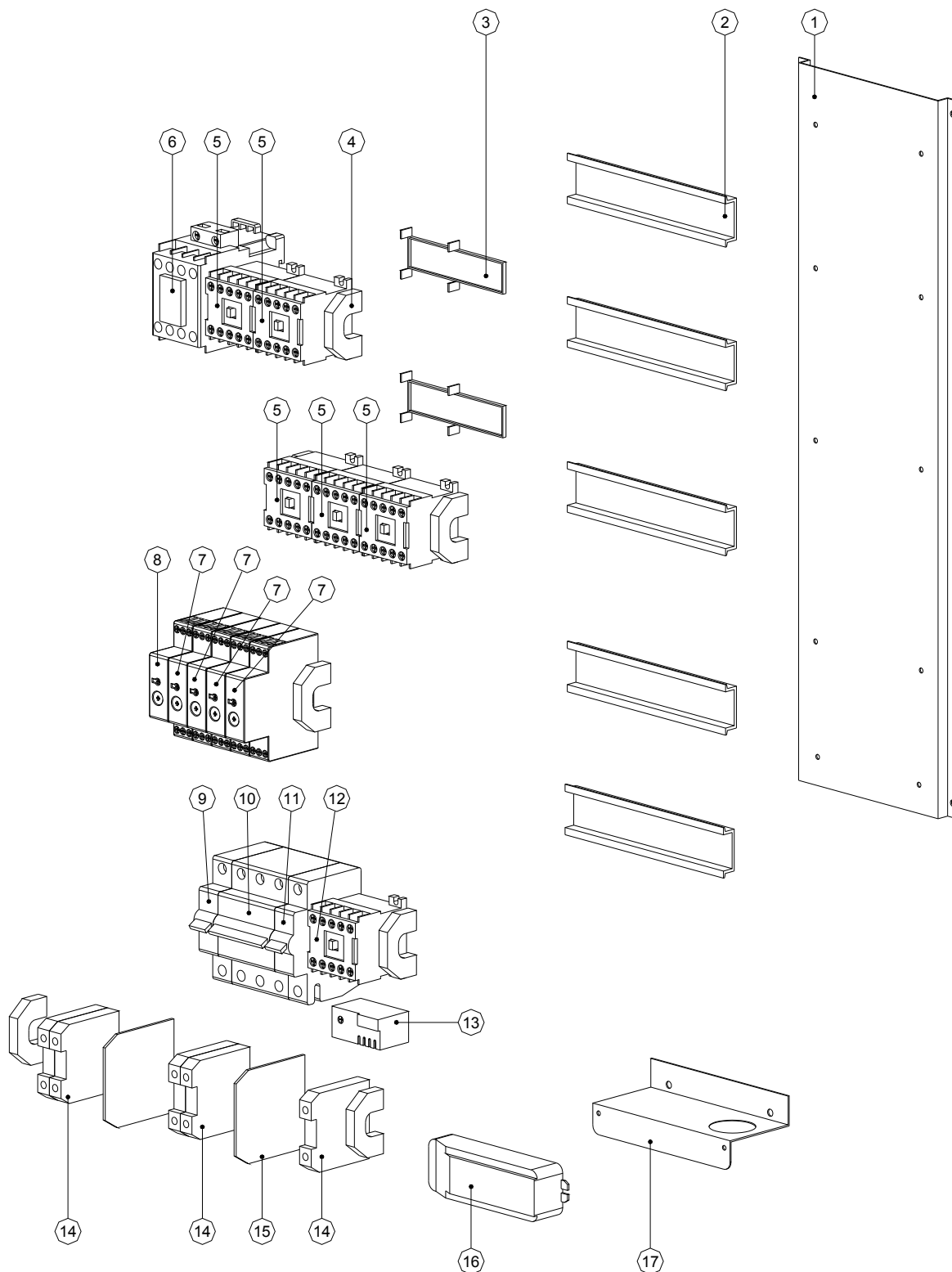
10.3.2 E35C GEAR PLATE ASSEMBLY (3 PHASE MODELS ONLY)

From lot number 1049000



| Pos | Part No | Description |
|-----|---------|--|
| 1 | 231510 | GEAR PLATE |
| 2 | 020990 | DIN RAIL |
| 4 | 231742 | CONTACTOR 11BG0601A230 |
| 5 | 231739 | CONTACTOR LOVATO BF1810A230 (3 phase 380-415 Volts Models) |
| | 231740 | CONTACTOR 11BF3200A230 (3 phase 208-240 Volt Models) |
| 6 | 020995 | END ANCHOR |
| 7 | 231745 | REVERSING STARTER KIT SMX9022 |
| 8 | 232466 | MOTOR WIRING LOOM |
| 9 | 231743 | CONTACTOR INTERLOCK 11BGX5000 |
| 10 | 231742 | CONTACTOR NC. 11BG0601A230 |
| 11 | 231744 | STAR-DELTA KIT |
| 12 | 024567 | MOTOR TIMER |
| 14 | 232407 | CIRCUIT BREAKER 6A |
| 15 | 232408 | CIRCUIT BREAKER 25A 3PH. |
| 16 | 232410 | SHUNT TRIP |
| 18 | 021229 | TERMINAL MARKING TAG - E |
| 19 | 021228 | TERMINAL MARKING TAG - N |
| 20 | 021227 | TERMINAL MARKING TAG - L3 |
| 21 | 021226 | TERMINAL MARKING TAG - L2 |
| 22 | 021225 | TERMINAL MARKING TAG - L1 |
| 23 | 022297 | CENTER JUMPER 2 POLE |
| 24 | 231759 | TERMINAL BLOCK 16mm RED |
| 25 | 022296 | PARTITION PLATE |
| 26 | 022295 | TERMINAL BLOCK 16mm GREY |
| 27 | 231760 | TERMINAL BLOCK 16mm GREEN |
| 28 | 231511 | CONNECTION BRACKET |
| 29 | 232577 | WIRE LOOM GEAR PLATE |

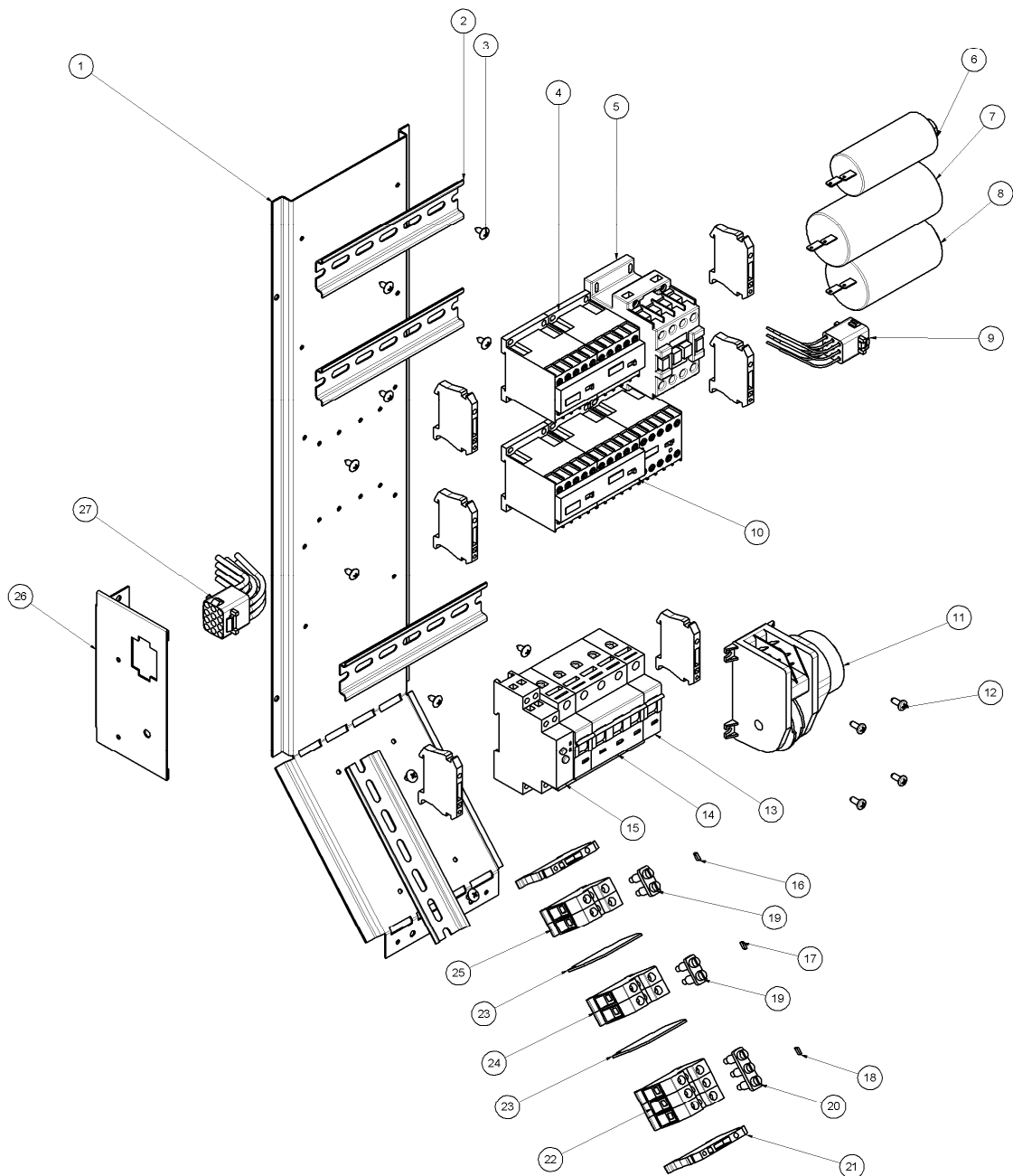
10.3.3 GEAR PLATE ASSEMBLY (1 PHASE MODELS ONLY) Up to lot number 0817999



| Pos | Part No. | Description |
|-----|----------|--|
| 1 | 020891 | GEAR PLATE |
| 2 | 020990 | DIN RAIL |
| 3 | 020769 | CONTACTOR INTERLOCK (C2&C3 AND C5&C6) |
| 4 | 020995 | END ANCHOR |
| 5 | 020768 | MOTOR CONTACTOR |
| 6 | 015966 | HEATING CONTACTOR 50Hz |
| | 020772 | HEATING CONTACTOR 60Hz |
| 7 | 020773 | TIMER - FAN DWELL / STEAM DOSE (To Ser. No. 204013) |
| | 023058 | TIMER - FAN DWELL / STEAM DOSE (From Ser. No. 204014) |
| 8 | 020863 | TIMER - FAN DIRECTION (To Ser. No. 204013) |
| | 023059 | TIMER - FAN DIRECTION (From Ser. No. 204014) |
| 9 | 020770 | SHUNT TRIP (VYNKIER) (50Hz To Ser. No. 230810) |
| | 021345 | SHUNT TRIP (AB) (50Hz From Ser. No. 230811; 60Hz All) |
| 10 | 020776 | CIRC. BREAKER 3 POLE 25A (VYNKIER) (50Hz to Ser. No. 230810) |
| | 021563 | CIRC. BREAKER 3 POLE 25A (AB) (50Hz From Ser. No. 230811; 60Hz All) |
| 11 | 020777 | CIRCUIT BREAKER - 1ø 6A (VYNKIER) (50Hz to Ser. No. 230810) |
| | 021344 | CIRCUIT BREAKER - 1ø 6A (AB) (50Hz From Ser. No. 230810; 60Hz All) |
| 12 | 022281 | CONTACTOR (MOTOR START CAPACITOR) |
| 13 | 021562 | TIMER - ON DELAY 1-30 SECOND (MOTOR START CAPACITOR) |
| 14 | 022295 | TERMINAL BLOCK - 16mm GREY |
| | 022297 | CENTRE JUMPER - 2 POLE (Not Illustrated) |
| 15 | 022296 | PARTITION PLATE |
| 16 | 020213 | LIGHTING TRANSFORMER |
| 17 | 021159 | TRANSFORMER BRACKET |

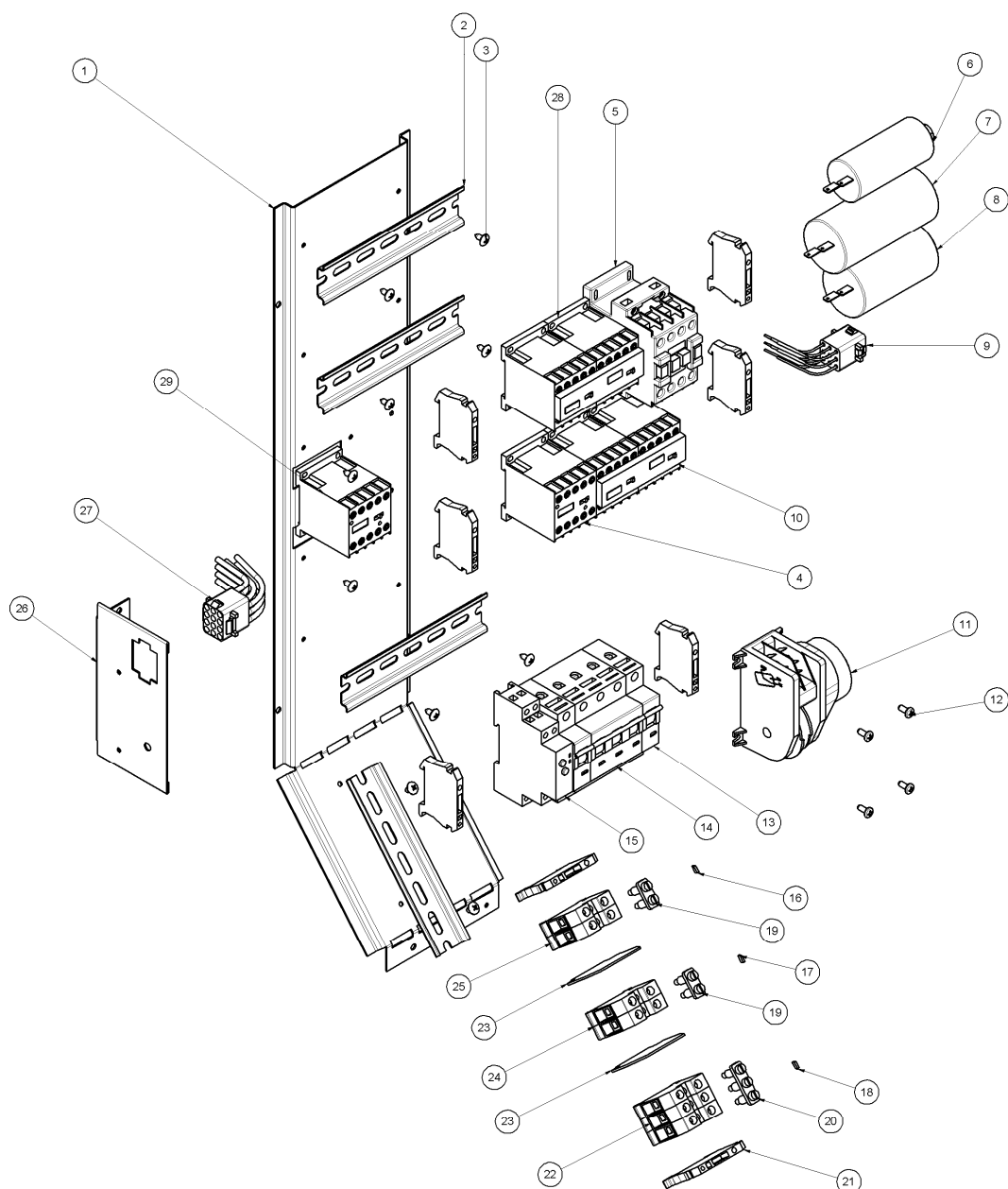
10.3.4 GEAR PLATE ASSEMBLY (1 PHASE MODELS ONLY)

from lot number 0818001 to lot number 0938xxx



| Pos | Part No | DESCRIPTION |
|-----|---------|------------------------------------|
| 1 | 231510 | GEAR PLATE |
| 2 | 020990 | DIN RAIL |
| 3 | 041045 | SCREW 8x3/8" TRUSS HD PHL NP |
| 4 | 231741 | CONTACTOR NO 11BG0610A230 |
| 5 | 231739 | CONTACTOR LOVATO BF1810A230 |
| 6 | 232551 | CAPACITOR 10 mF (for 50Hz models) |
| | 232552 | CAPACITOR 12 mF (for 60Hz models) |
| 7 | 232554 | CAPACITOR 30 mF (for 50Hz models) |
| | 232555 | CAPACITOR 35 mF (for 60Hz models) |
| 8 | 232553 | CAPACITOR 20 mF (for 50Hz models) |
| | 232555 | CAPACITOR 35 mF (for 60Hz models) |
| 9 | 232466 | MOTOR WIRING LOOM |
| 10 | 231743 | CONTACTOR INTERLOCK 11BGX5000 |
| 11 | 024567 | MOTOR TIMER |
| 12 | 041036 | SCREW 3/8"X8B PAN PH NP |
| 13 | 232407 | CIRCUIT BREAKER 6A |
| 14 | 232410 | SHUNT TRIP |
| 14 | 232408 | CIRCUIT BREAKER 25A 3PH. |
| 15 | 231748 | ON DELAY TIMER 24-240VAC |
| 16 | 021229 | TERMINAL MARKING TAG - E |
| 17 | 021228 | TERMINAL MARKING TAG - N |
| 18 | 021225 | TERMINAL MARKING TAG - L1 |
| 19 | 022297 | CENTER JUMPER 2 POLE |
| 20 | 022527 | CENTER JUMPER 3 POLE |
| 21 | 020995 | END ANCHOR |
| 22 | 231759 | TERMINAL BLOCK 16mm RED |
| 23 | 022296 | PARTITION PLATE |
| 24 | 022295 | TERMINAL BLOCK 16mm GREY |
| 25 | 231760 | TERMINAL BLOCK 16mm GREEN |
| 26 | 231511 | CONNECTION BRACKET |
| 27 | 232577 | WIRE LOOM GEAR PLATE |

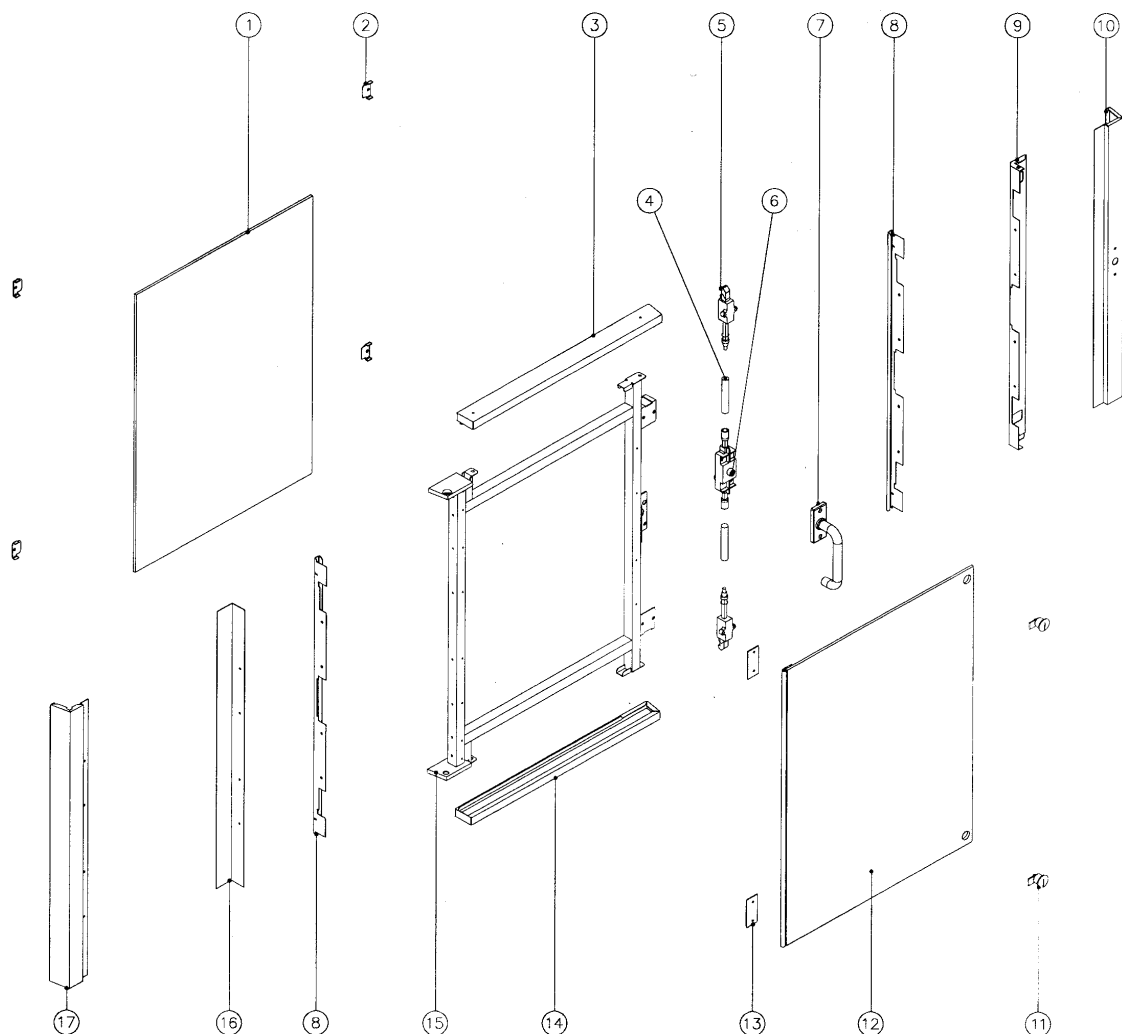
10.3.5 GEAR PLATE ASSEMBLY (1 PHASE MODELS ONLY) from lot number 0938xxx



| Pos | Part No | DESCRIPTION |
|-----|---------|------------------------------------|
| 1 | 231510 | GEAR PLATE |
| 2 | 020990 | DIN RAIL |
| 3 | 041045 | SCREW 8x3/8" TRUSS HD PHL NP |
| 4 | 231741 | CONTACTOR NO 11BG0610A230 |
| 5 | 231739 | CONTACTOR LOVATO BF1810A230 |
| 6 | 232551 | CAPACITOR 10 mF (for 50Hz models) |
| | 232552 | CAPACITOR 12 mF (for 60Hz models) |
| 7 | 232554 | CAPACITOR 30 mF (for 50Hz models) |
| | 232555 | CAPACITOR 35 mF (for 60Hz models) |
| 8 | 232553 | CAPACITOR 20 mF (for 50Hz models) |
| | 232555 | CAPACITOR 35 mF (for 60Hz models) |
| 9 | 232466 | MOTOR WIRING LOOM |
| 10 | 231743 | CONTACTOR INTERLOCK 11BGX5000 |
| 11 | 024567 | MOTOR TIMER |
| 12 | 041036 | SCREW 3/8"X8B PAN PH NP |
| 13 | 232407 | CIRCUIT BREAKER 6A |
| 14 | 232410 | SHUNT TRIP |
| 14 | 232408 | CIRCUIT BREAKER 25A 3PH. |
| 15 | 231748 | ON DELAY TIMER 24-240VAC |
| 16 | 021229 | TERMINAL MARKING TAG - E |
| 17 | 021228 | TERMINAL MARKING TAG - N |
| 18 | 021225 | TERMINAL MARKING TAG - L1 |
| 19 | 022297 | CENTER JUMPER 2 POLE |
| 20 | 022527 | CENTER JUMPER 3 POLE |
| 21 | 020995 | END ANCHOR |
| 22 | 231759 | TERMINAL BLOCK 16mm RED |
| 23 | 022296 | PARTITION PLATE |
| 24 | 022295 | TERMINAL BLOCK 16mm GREY |
| 25 | 231760 | TERMINAL BLOCK 16mm GREEN |
| 26 | 231511 | CONNECTION BRACKET |
| 27 | 232577 | WIRE LOOM GEAR PLATE |
| 28 | 231742 | CONTACTOR |
| 29 | 234033 | CONTACTOR 2NC 11BG09T2A230 |

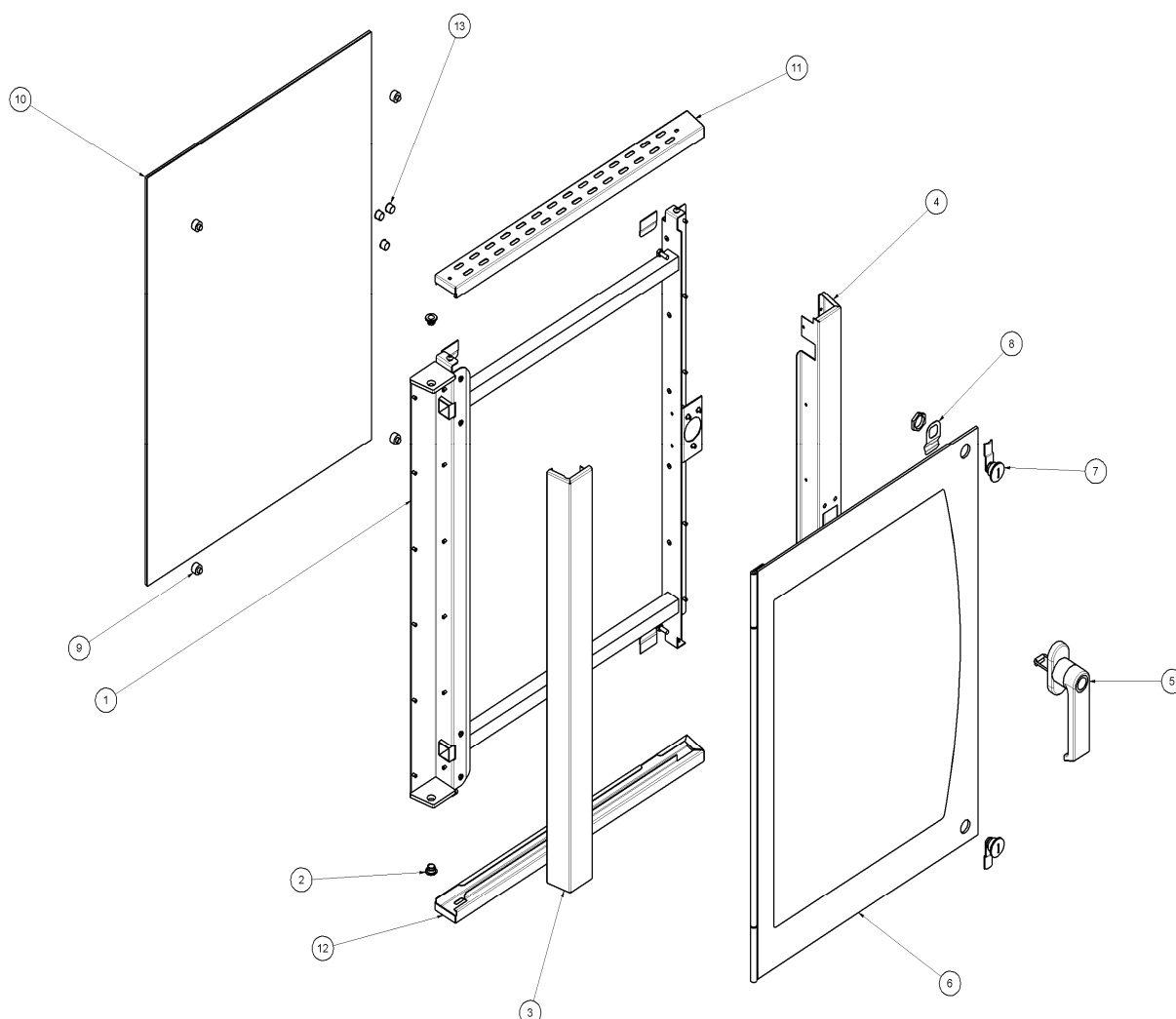
10.4 OVEN DOOR ASSEMBLY

10.4.1 GLASS DOOR ASSEMBLY - E35-26 / E35-30 Up to lot number 0817999



| Pos | Part No. | Description |
|-----|---------------|---|
| 1 | 020713K | DOOR INNER GLASS (745.5mmx536mm) |
| | 022314 | GLASS SEAL |
| | 022311 | INNER GLASS UPGRADE KIT (Up to Ser. No. 39600) (745.5mmx536mm) |
| 2 | 022308 | GLASS CLAMP |
| 3 | 004715 | DOOR COVER TOP |
| 4 | 020833 | DOOR BOLT CONNECTING ROD |
| | 047308 | SPLIT PIN - 32x3.2 ST/ST |
| 5 | 020753 | BOLTING ELEMENT |
| 6 | 020752 | HANDLE GEAR |
| 7 | 020751K | DOOR HANDLE KIT |
| | 020865 | SCREW CAP - BLACK |
| 8 | 022309 | GLASS SPACER TRIM |
| 9 | 020730 | DOOR TRIM INNER RH |
| 10 | 020731 | DOOR TRIM OUTER RH |
| 11 | 020766 | LATCH ASSEMBLY |
| 12 | 021154 | OUTER GLASS HINGED (744mmx553mm) |
| | 090014 | GLASS SEAL - 750mm (INSEAL 10 x 6mm) |
| 13 | 021153 | HINGE SPACER PLATE |
| 14 | 004716 | DOOR COVER BOTTOM |
| 15 | 020725 | DOOR FRAME |
| 16 | 020732 | DOOR TRIM INNER LH |
| 17 | 020733 | DOOR TRIM OUTER LH |
| | SD7031 | COMPLETE DOOR ASSEMBLY |

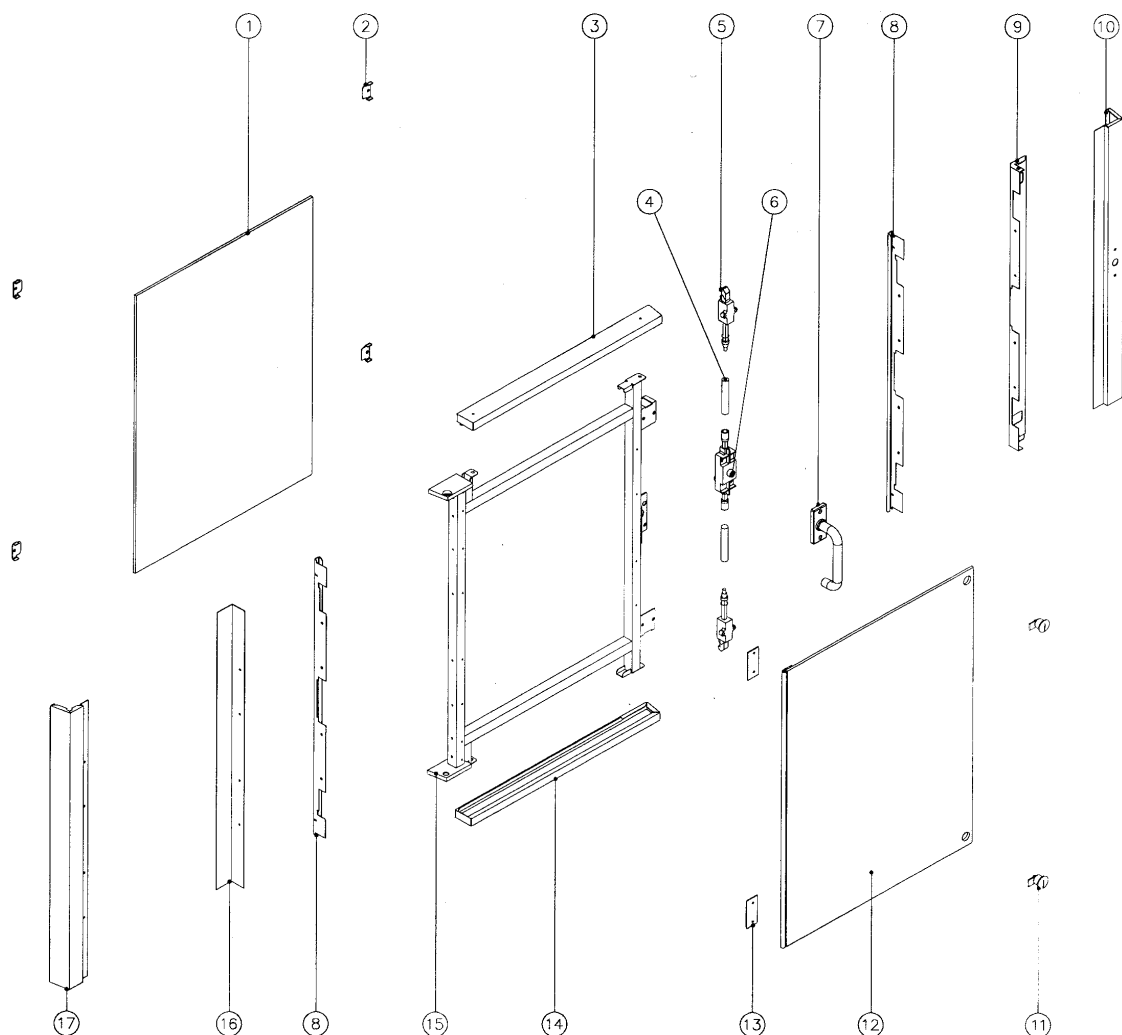
10.4.2 GLASS DOOR ASSEMBLY - E35-26 / E35-30 From lot number 0818001



| Pos | Part No | Description |
|-----|---------|--|
| 1 | 230725 | DOOR FRAME WA E35 |
| 2 | 230745 | HINGE BUSH |
| | 230744 | HINGE PIN |
| | 230746 | HINGE NUT |
| 3 | 230735 | DOOR TRIM LH |
| 4 | 230736 | DOOR TRIM RH |
| 5 | 231494 | HANDLE / LOCK - SLAMSHUT |
| | 231804 | SINGLE STEP LOCKING DOG |
| | 231805 | DUAL STEP LOCKING DOG |
| 6 | 232134 | DOOR OUTER GLASS ASSEMBLY(744mmx525mm) |
| 7 | 232588 | QUAD LATCH |
| 8 | 232364 | DOOR OUTER GLASS SPRING |
| 9 | 231801 | DOOR INNER GLASS BUFFER |
| 10 | 231803 | DOOR INNER GLASS E35(745.5mmx536mm) |
| 11 | 231773 | DOOR TRIM TOP WA |
| 12 | 231774 | DOOR TRIM BOTTOM WA |
| 13 | 020866 | DOME PLUG DIA. 12.7 |

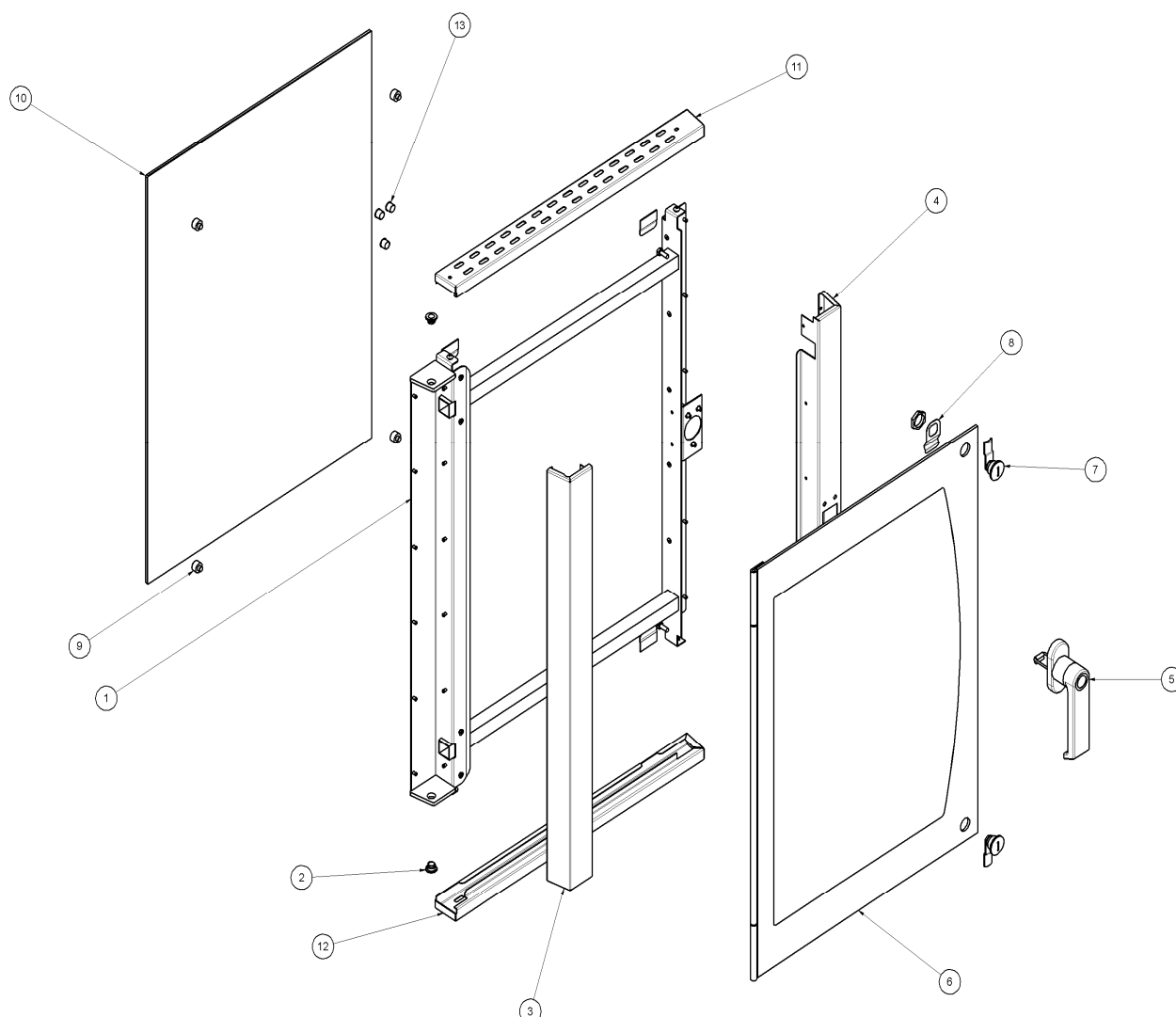
232103 DOOR ASSEMBLY

10.4.3 GLASS DOOR ASSEMBLY - E35GN-26 Up to lot number 0817999



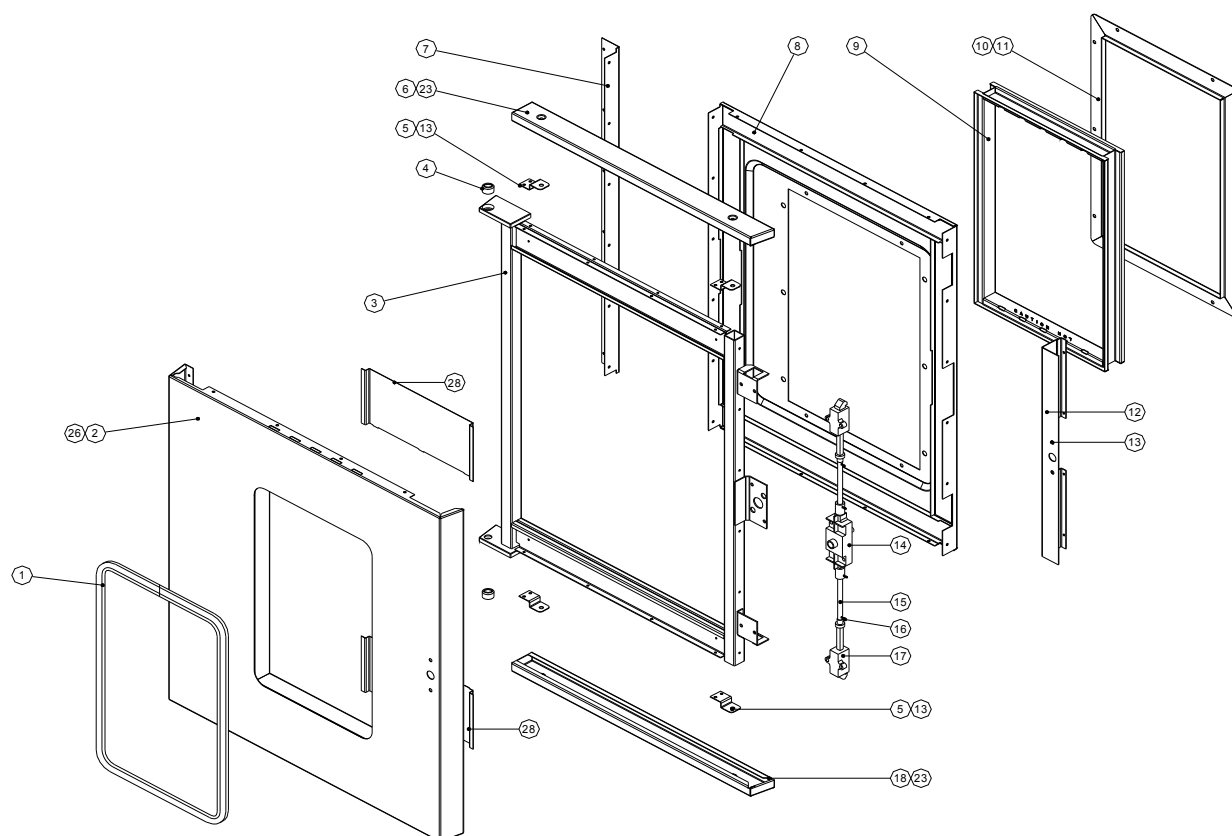
| Pos | Part No. | Description |
|-----|----------|---------------------------------------|
| 1 | 025161 | DOOR INNER GLASS E35GN (744mmx626mm) |
| | 022314 | GLASS SEAL |
| 2 | 022308 | GLASS CLAMP |
| 3 | 004981 | DOOR COVER TOP E35GN |
| 4 | 020833 | DOOR BOLT CONNECTING ROD |
| | 047308 | SPLIT PIN - 32x3.2 ST/ST |
| 5 | 020753 | BOLTING ELEMENT |
| 6 | 020752 | HANDLE GEAR |
| 7 | 020751K | DOOR HANDLE KIT |
| | 020865 | SCREW CAP - BLACK |
| 8 | 022309 | GLASS SPACER TRIM |
| 9 | 020730 | DOOR TRIM INNER RH |
| 10 | 020731 | DOOR TRIM OUTER RH |
| 11 | 020766 | LATCH ASSEMBLY |
| 12 | 025159 | OUTER GLASS HINGED E3GN (744mmx643mm) |
| | 090014 | GLASS SEAL - 750mm (INSEAL 10 x 6mm) |
| 13 | 021153 | HINGE SPACER PLATE |
| 14 | 004982 | DOOR COVER BOTTOM E3GN |
| 15 | 025162 | DOOR FRAME E35GN |
| 16 | 020732 | DOOR TRIM INNER LH |
| 17 | 020733 | DOOR TRIM OUTER LH |

10.4.4 GLASS DOOR ASSEMBLY - E35GN-26 From lot number 0818001



| Pos | Part No | Description |
|-----|---------|---|
| 1 | 232122 | DOOR FRAME WA E35GN |
| 2 | 230745 | HINGE BUSH |
| | 230744 | HINGE PIN |
| | 230746 | HINGE NUT |
| 3 | 230735 | DOOR TRIM LH |
| 4 | 230736 | DOOR TRIM RH |
| 5 | 231494 | HANDLE / LOCK - SLAMSHUT |
| | 231804 | SINGLE STEP LOCKING DOG |
| | 231805 | DUAL STEP LOCKING DOG |
| 6 | 232135 | DOOR OUTER GLASS ASSEMBLY E35GN (744mmx615mm) |
| 7 | 232588 | QUAD LATCH |
| 8 | 232364 | DOOR OUTER GLASS SPRING |
| 9 | 231801 | DOOR INNER GLASS BUFFER |
| 10 | 232123 | DOOR INNER GLASS E35GN (745.5mmx626mm) |
| 11 | 232125 | DOOR TRIM TOP WA E35GN |
| 12 | 232126 | DOOR TRIM BOTTOM WA E35GN |
| 13 | 020866 | DOME PLUG DIA. 12.7 |
| | 232118 | E35GN-26 DOOR ASSEMBLY |

10.4.5 STAINLESS STEEL DOOR ASSEMBLY - E35-26 / E35-30 Up To lot number 0817999



| Pos | Part No. | Description |
|-----|----------|---------------------------------|
| 1 | 024103 | OUTER GLASS SEAL |
| 2 | 024079 | DOOR OUTER PANEL WA |
| 3 | 004892 | DOOR FRAME WA |
| 4 | 020738 | HINGE BUSH |
| 5 | 024098 | COVER SUPPORT BRACKET |
| 6 | 004893 | DOOR COVER TOP |
| 7 | 024099 | DOOR TRIM INNER LH |
| 8 | 024083 | DOOR INNER PANEL WA |
| 9 | 024090 | GLASS MODULE(480mmx310mm) |
| 10 | 024104 | INNER GLASS SEAL |
| 11 | 024087 | GLASS CLAMP WA |
| 12 | 024101 | HANDLE SUPPORT |
| 13 | 047100 | NUTSERT 3/16" |
| 14 | 020752 | HANDLE GEAR RH |
| 15 | 020833 | DOOR BOLT CONNECTING ROD |
| 16 | 047308 | SPLIT PIN 32 x 3.2 |
| 17 | 020753 | BOLTING ELEMENT |
| 18 | 004894 | DOOR COVER BOTTOM |
| 19 | 041409 | SCREW M5 x 25 MUSH SLOT |
| 20 | 045410 | WASHER M5 SPRING |
| 21 | 044017 | NUT M5 HEX |
| 22 | 041045 | SCREW 3/8" x 8 TRUSS |
| 23 | 041436 | SCREW 3/4" x 3/16 SD POZI BLACK |
| 24 | 090005 | SILICONE RTV CLEAR |
| 25 | 090402 | FIBREGLASS |
| 26 | 044206 | NUT SPIRE M5 |
| 27 | 041411 | SCREW M5 x 16 PAN SLT 304 SS |
| 28 | 024242 | WINDOW VENT |