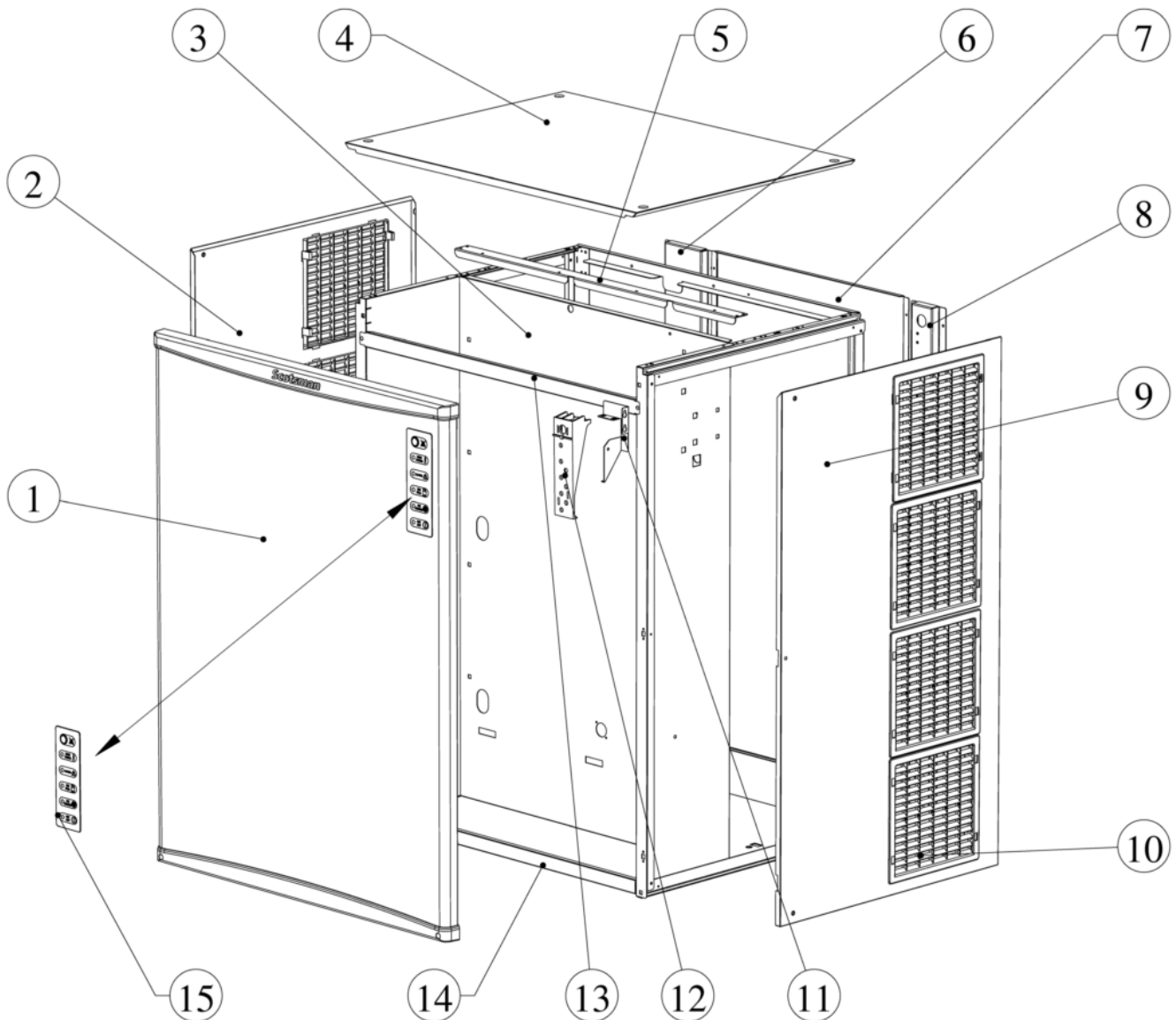
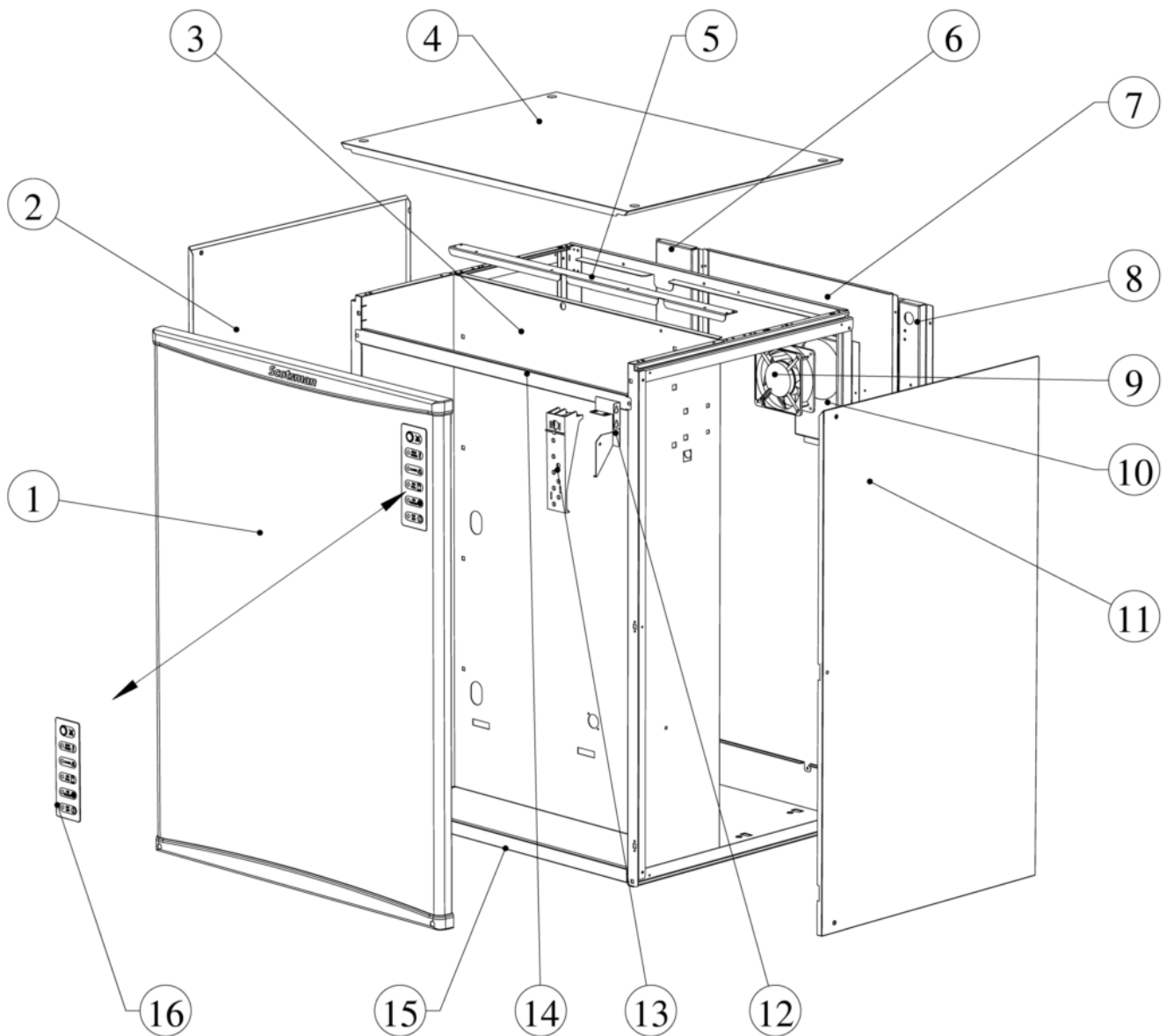


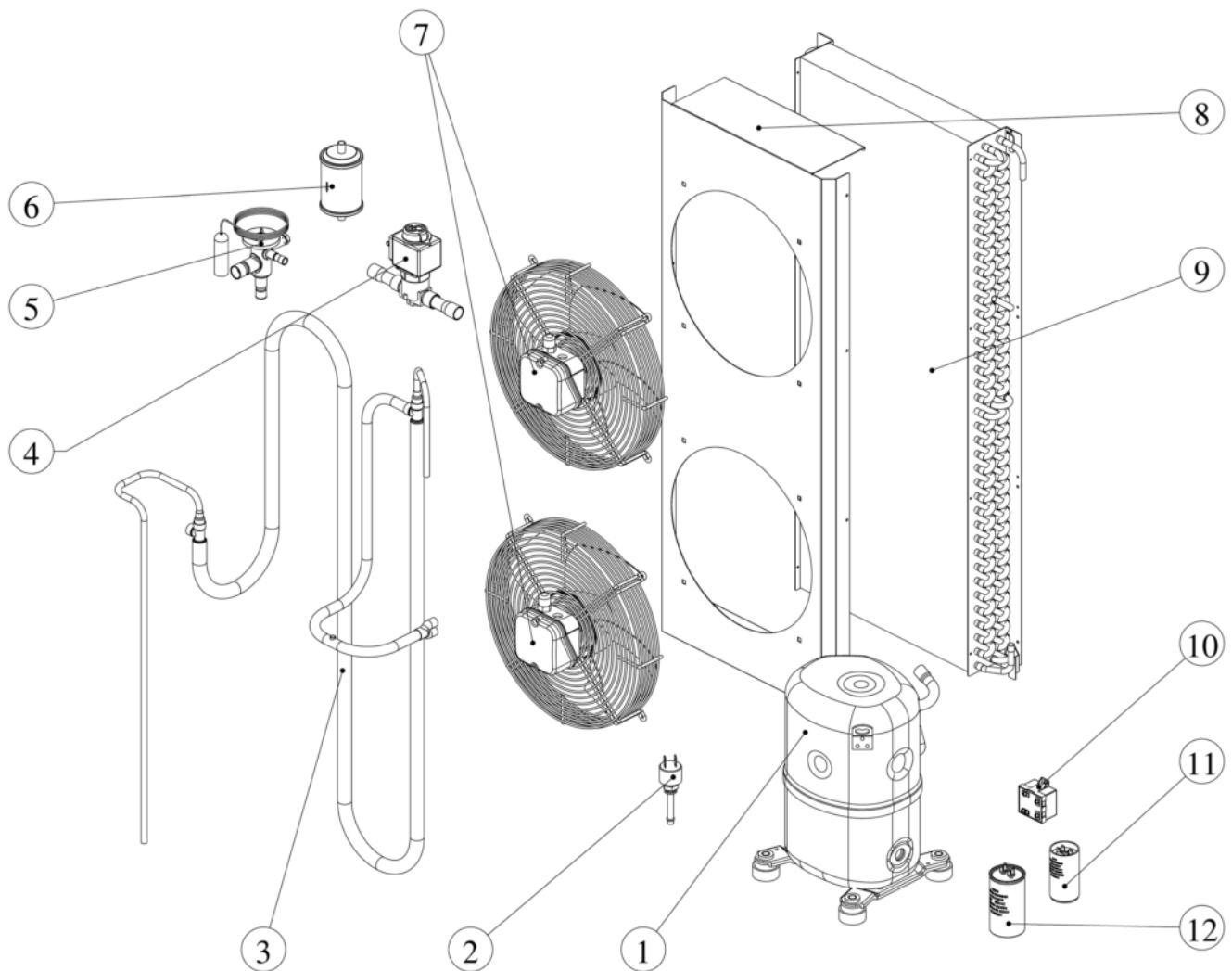
| Pos | Code | Description |
|------|------------------|----------------------------------|
| 0001 | SCSC 91000037-10 | FRONT PANEL 1008 |
| 0002 | SCSC 11000458-00 | LEFT SIDE PANEL |
| 0004 | SCSC 81453600-00 | TOP PANEL |
| 0006 | SCSC 80000014-00 | AIR FILTER |
| 0008 | SCSC 11000197-00 | METAL BRACKET FOR FITTING |
| 0009 | SCSC 11000459-00 | RIGHT SIDE PANEL |
| 0010 | SCSC 11000255-00 | AIR FILTER SEAT |
| 0011 | SCSC 41000038-01 | PLASTIC SHUTTER |
| 0013 | SCSC 41000008-00 | LED CARD HOLDER |
| 0016 | SCSC 98020201-02 | MONITORING LED LABEL - NW series |



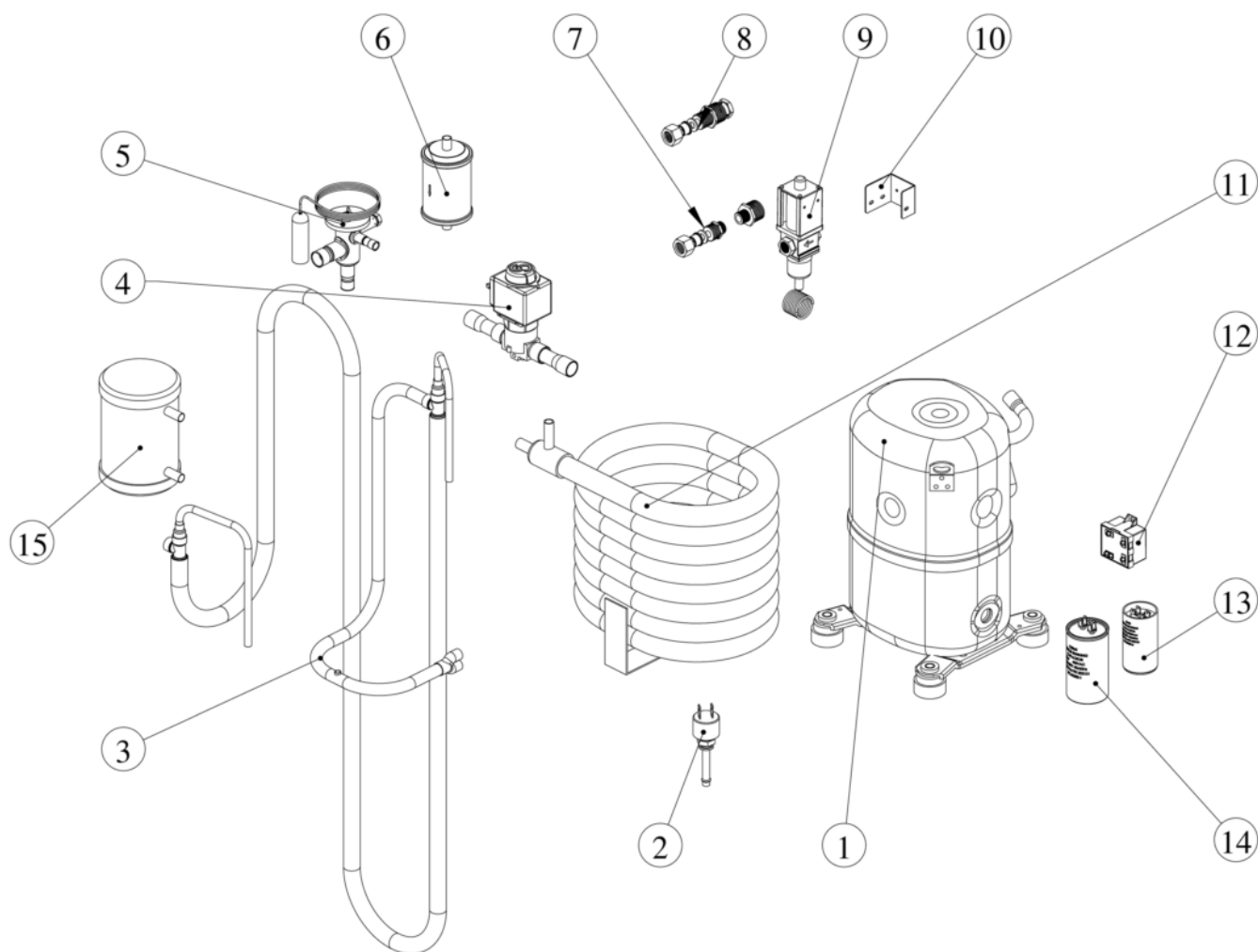
| Pos | Code | Description |
|------|------------------|----------------------------------|
| 0001 | SCSC 91000037-10 | FRONT PANEL 1008 |
| 0002 | SCSC 11000458-00 | LEFT SIDE PANEL |
| 0004 | SCSC 81453600-00 | TOP PANEL |
| 0008 | SCSC 11000197-00 | METAL BRACKET FOR FITTING |
| 0009 | SCSC 11000459-00 | RIGHT SIDE PANEL |
| 0010 | SCSC 41000038-01 | PLASTIC SHUTTER |
| 0012 | SCSC 41000008-00 | LED CARD HOLDER |
| 0015 | SCSC 98020201-02 | MONITORING LED LABEL - NW series |



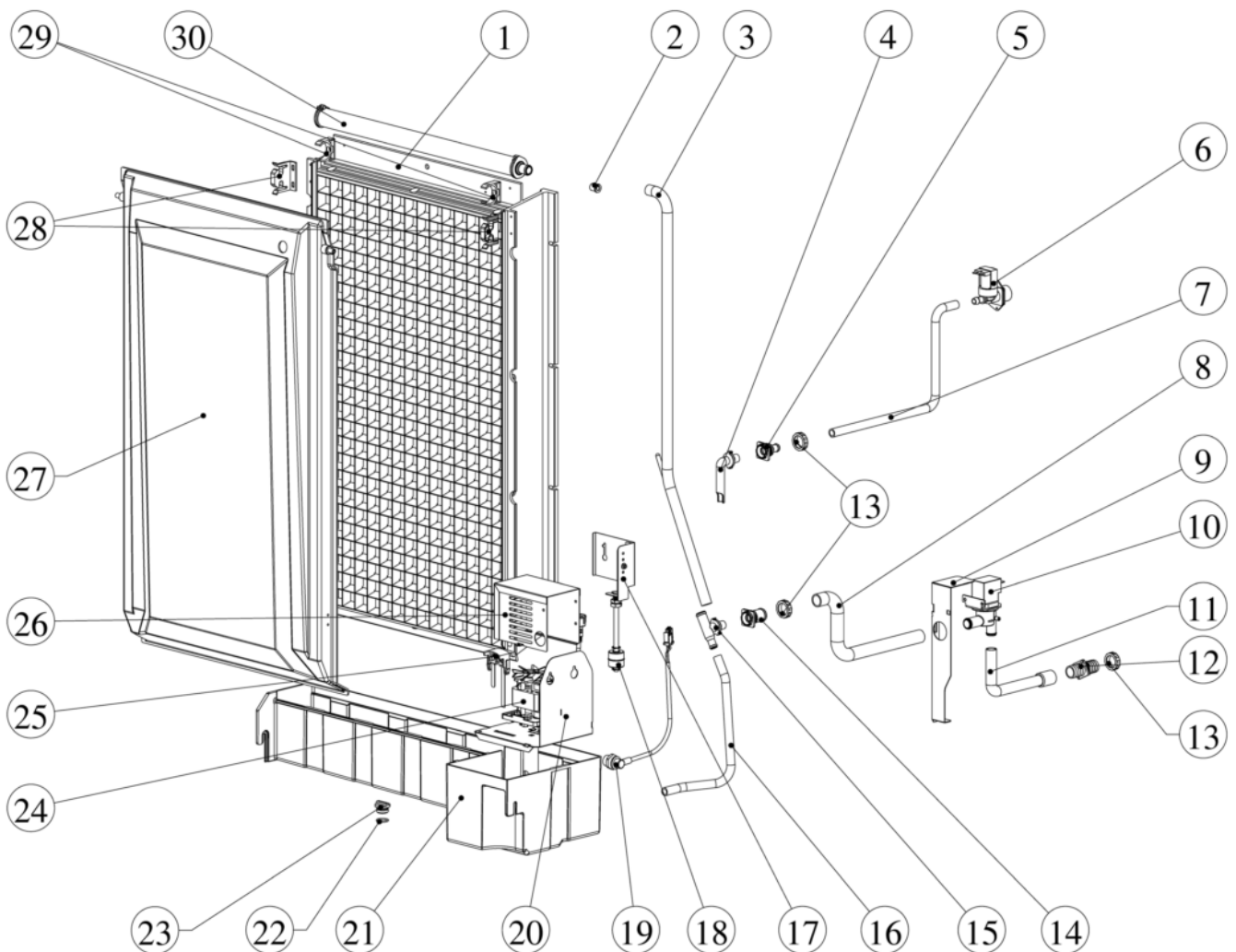
| Pos | Code | Description |
|------|------------------|----------------------------------|
| 0001 | SCSC 91000037-10 | FRONT PANEL 1008 |
| 0002 | SCSC 11000458-00 | LEFT SIDE PANEL |
| 0004 | SCSC 81453600-00 | TOP PANEL |
| 0008 | SCSC 11000197-00 | METAL BRACKET FOR FITTING |
| 0009 | SCSC 30000082-00 | FAN |
| 0010 | SCSC 11000460-00 | FAN BRACKET |
| 0011 | SCSC 11000459-00 | RIGHT SIDE PANEL |
| 0013 | SCSC 41000008-00 | LED CARD HOLDER |
| 0016 | SCSC 98020201-02 | MONITORING LED LABEL - NW series |



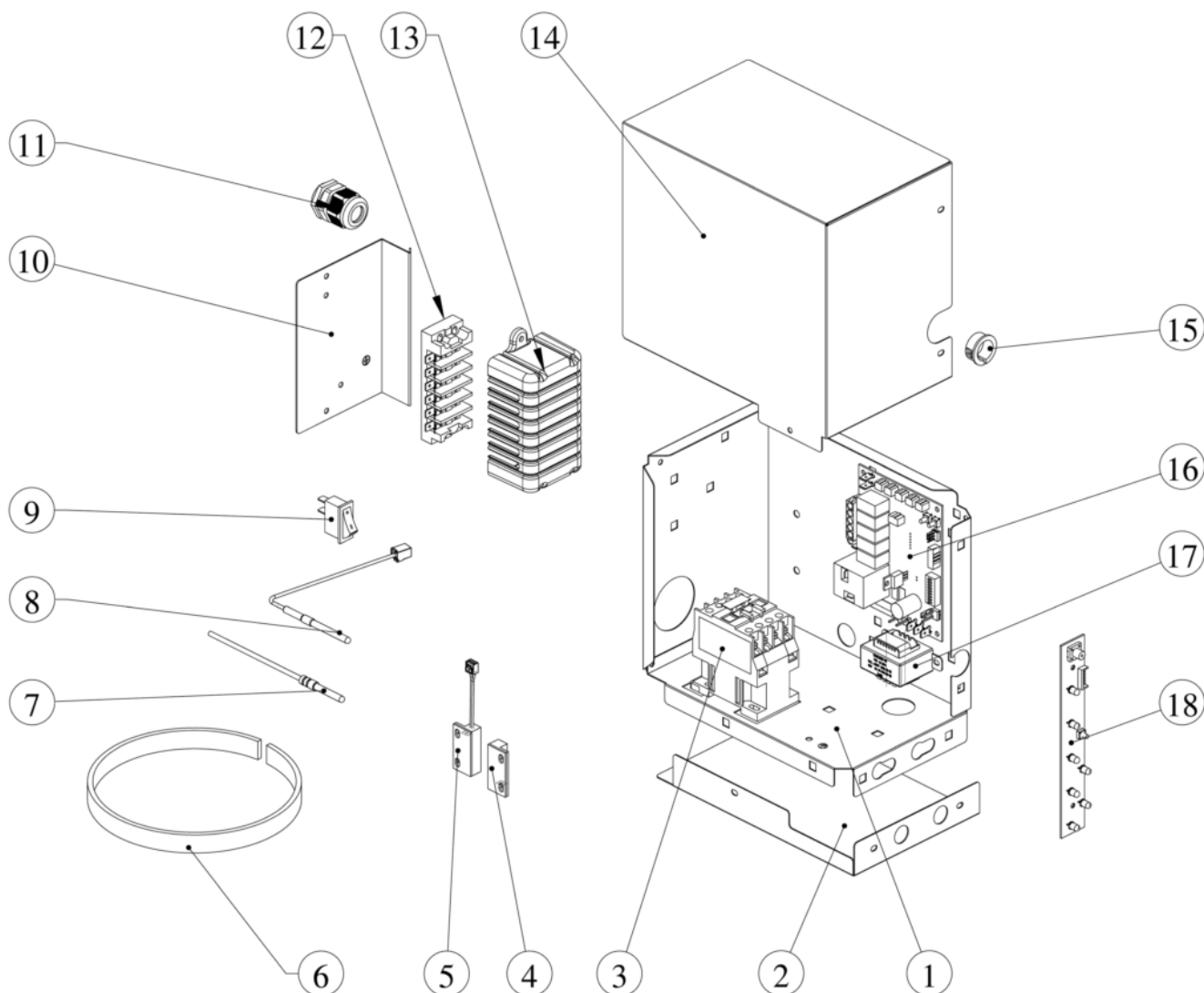
| Pos | Code | Description |
|------|------------------|--------------------------|
| 0001 | SCSC 81000118-00 | COMPRESSOR - 230/50/1 |
| 0002 | SCSC 19550628-00 | HI PRESSURE CTRL |
| 0004 | SCSC 81000218-00 | HOT GAS VALVE |
| 0005 | SCCM 25410096 | TXV INSULATION |
| 0005 | SCSC 81000048-00 | TXV |
| 0006 | SCSC 19300355-00 | DRIER |
| 0007 | SCSC 80000013-00 | FAN MOTOR - 230/50-60 |
| 0009 | SCSC 81000045-00 | CONDENSER |
| 0010 | SCSC 30000118-00 | RELAY 230/50/1 |
| 0010 | SCSC 30000121-00 | RELAY 220/60/1 |
| 0011 | SCSC 30000117-00 | START CAPACITOR 230/50/1 |
| 0011 | SCSC 30000120-00 | START CAPACITOR 220/60/1 |
| 0012 | SCSC 30000116-00 | RUN CAPACITOR 230/50/1 |
| 0012 | SCSC 30000119-00 | RUN CAPACITOR 220/60/1 |



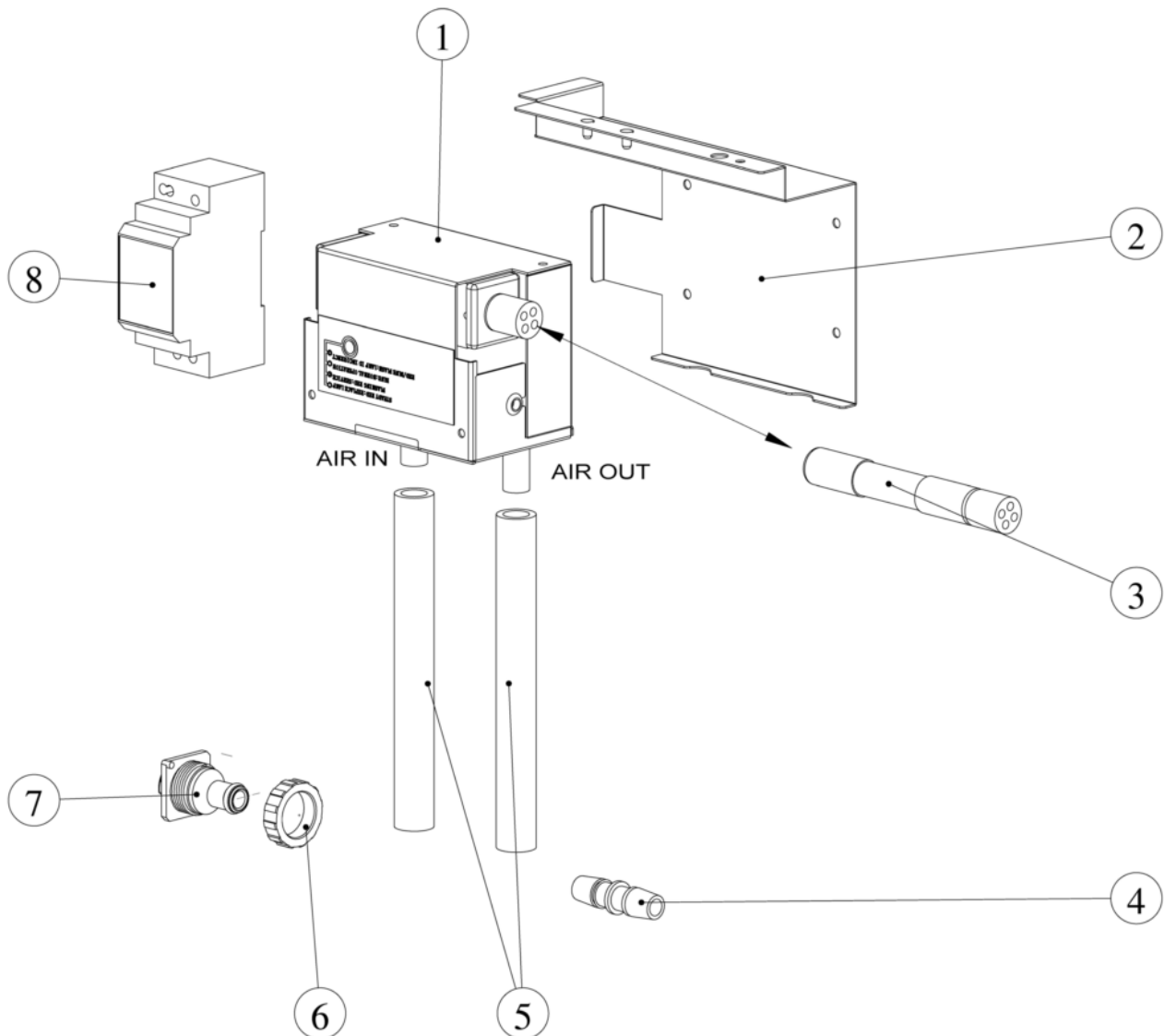
| Pos | Code | Description |
|------|------------------|--------------------------|
| 0001 | SCSC 81000118-00 | COMPRESSOR - 230/50/1 |
| 0002 | SCSC 19550628-00 | HI PRESSURE CTRL |
| 0004 | SCSC 81000218-00 | HOT GAS VALVE |
| 0005 | SCSC 81000048-00 | TXV |
| 0006 | SCSC 19300355-00 | DRIER |
| 0007 | SCSC 94000011 | USE SCSC 94000011-00 |
| 0008 | SCSC 94000012 | USE SCSC 94000012-00 |
| 0009 | SCSC 81000006-00 | WATER REGULATING VALVE |
| 0010 | SCSC 11000050-00 | METAL SUPPORT |
| 0011 | SCSC 81000119-00 | WATER CONDENSER |
| 0012 | SCSC 30000118-00 | RELAY 230/50/1 |
| 0012 | SCSC 30000121-00 | RELAY 220/60/1 |
| 0013 | SCSC 30000117-00 | START CAPACITOR 230/50/1 |
| 0013 | SCSC 30000120-00 | START CAPACITOR 220/60/1 |
| 0014 | SCSC 30000116-00 | RUN CAPACITOR 230/50/1 |
| 0014 | SCSC 30000119-00 | RUN CAPACITOR 220/60/1 |



| Pos | Code | Description |
|------|------------------|-----------------------------------|
| 0004 | SCSC 41000098-00 | WATER INLET FITTING ELBOW |
| 0005 | SCSC 97000196-00 | WATER INLET FITTING |
| 0010 | SCSC 82000017-99 | WATER PROOF DRAIN VALVE 230 V |
| 0011 | SCSC 25792106-00 | TUBE |
| 0012 | SCSC 41000007-00 | WATER DRAIN FITTING |
| 0013 | SCSC 66053500-00 | PLASTIC NUT |
| 0014 | SCSC 97000197-00 | WATER DRAIN JOINT ASSY |
| 0015 | SCSC 41000100-00 | T CONNECTOR |
| 0016 | SCSC 22000033-00 | TUBE |
| 0017 | SCSC 91000151-01 | ASSY BRACKET FOR 30" MODELS |
| 0018 | SCSC 95000004-00 | WATER LEVEL SWITCH |
| 0019 | SCSC 31000040-00 | WATER PUMP POWER CORD |
| 0022 | SCSC 87000001-00 | O RING |
| 0023 | SCSC 41000005-00 | DRAIN PLUG |
| 0024 | SCSC 82000009-00 | WATER PUMP - 230/60/1 |
| 0024 | SCSC 82000010-00 | WATER PUMP - 230/50/1 |
| 0025 | SCSC 99300311-02 | WATER LEVEL SENSOR HARNESS NW1408 |
| 0027 | SCSC 97000069-10 | ICE DEFLECTOR |
| 0028 | SCSC 25726473-00 | ICE DEFLECTOR BRACKET |
| 0029 | SCSC 41000017-00 | CLAMP |
| 0030 | SCSC 94000052-00 | WATER DISTRIBUTOR 458-1408 |



| Pos | Code | Description |
|------|------------------|--------------------------|
| 0001 | SCSC 11000014-00 | CONTROL BOX |
| 0002 | SCSC 11000016-00 | METAL PLATE |
| 0003 | SCSC 30000033-00 | CONTACTOR |
| 0004 | SCSC 98050102-00 | MAGNET |
| 0005 | SCSC 98050103-00 | MAGNET SWITCH |
| 0007 | SCSC 30000068-00 | CONDENSER SENSOR |
| 0008 | SCSC 99300306-00 | WATER TEMPERATURE SENSOR |
| 0009 | SCSC 98050108-00 | START DELAY SWITCH |
| 0014 | SCSC 11000015-00 | CONTROL BOX COVER |
| 0015 | SCSC 99200205-00 | SNAP BUSHING |
| 0016 | SCSC 98050101-00 | PC BOARD |
| 0017 | SCSC 99020404-00 | TRANSFORMER |
| 0018 | SCSC 98050105-00 | MONITORING LED ASSY |



| Pos | Code | Description |
|------|------------------|----------------------------|
| 0001 | SC620649 00 | OZONIZER XSAFE X-20 |
| 0002 | SCSC 97000203-00 | X20 HOLDER FOR 458/608 |
| 0003 | SC630102 00 | BULB FOR XSAFE X-20 |
| 0004 | SCSC 41000118-00 | OZONE AIR OUTLET CONNECTOR |
| 0005 | SC281822 02 | PLASTIC HOSE - PER METER |
| 0006 | SCSC 66053500-00 | PLASTIC NUT |
| 0007 | SCSC 41000097-00 | AIR SLUFT UCTION CONNECTOR |
| 0008 | SCSC 30000102-00 | DC12V TRANSFORMER |
| 0009 | SCSC 30000102-00 | DC12V TRANSFORMER |