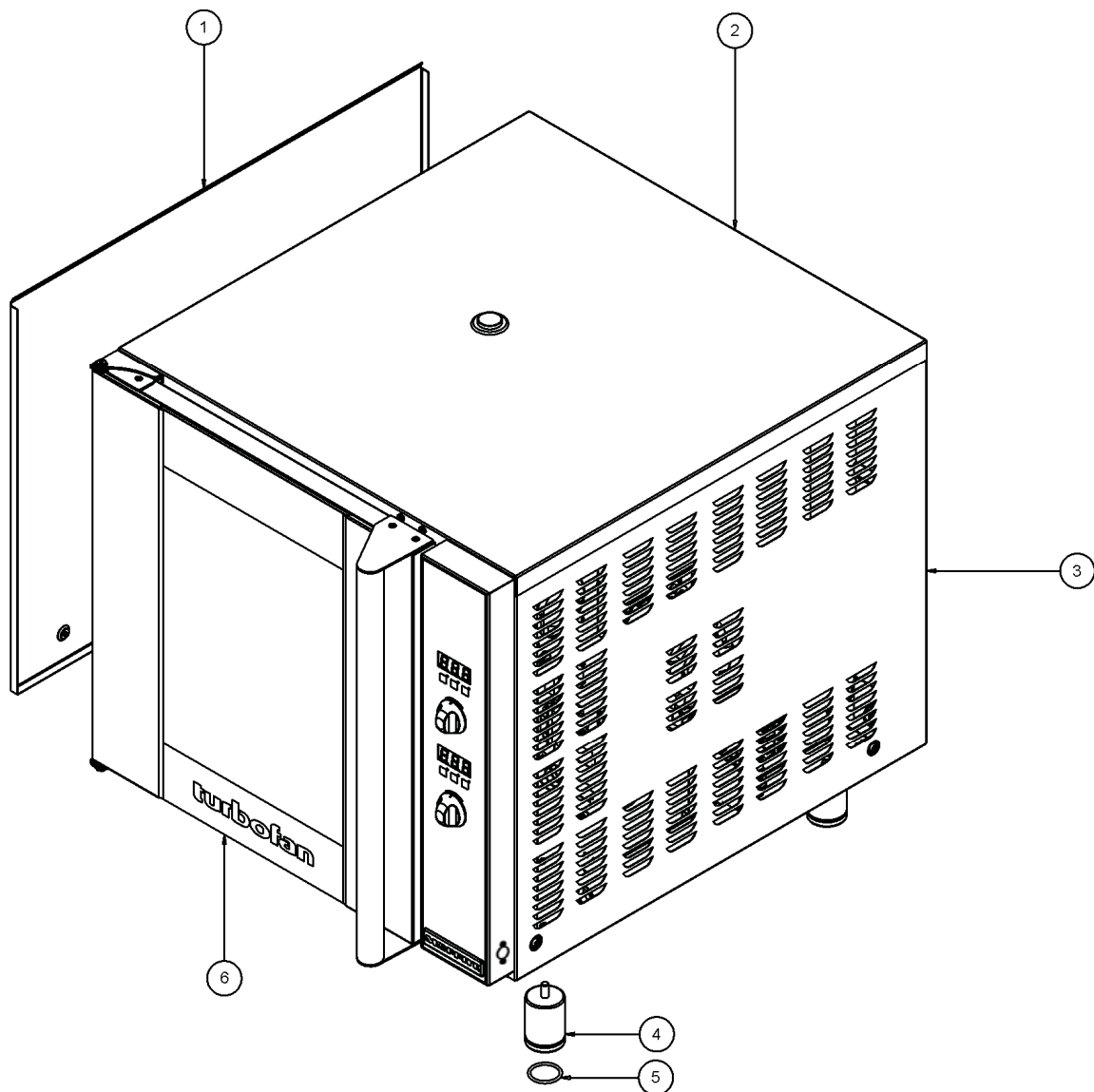


Outer Assembly

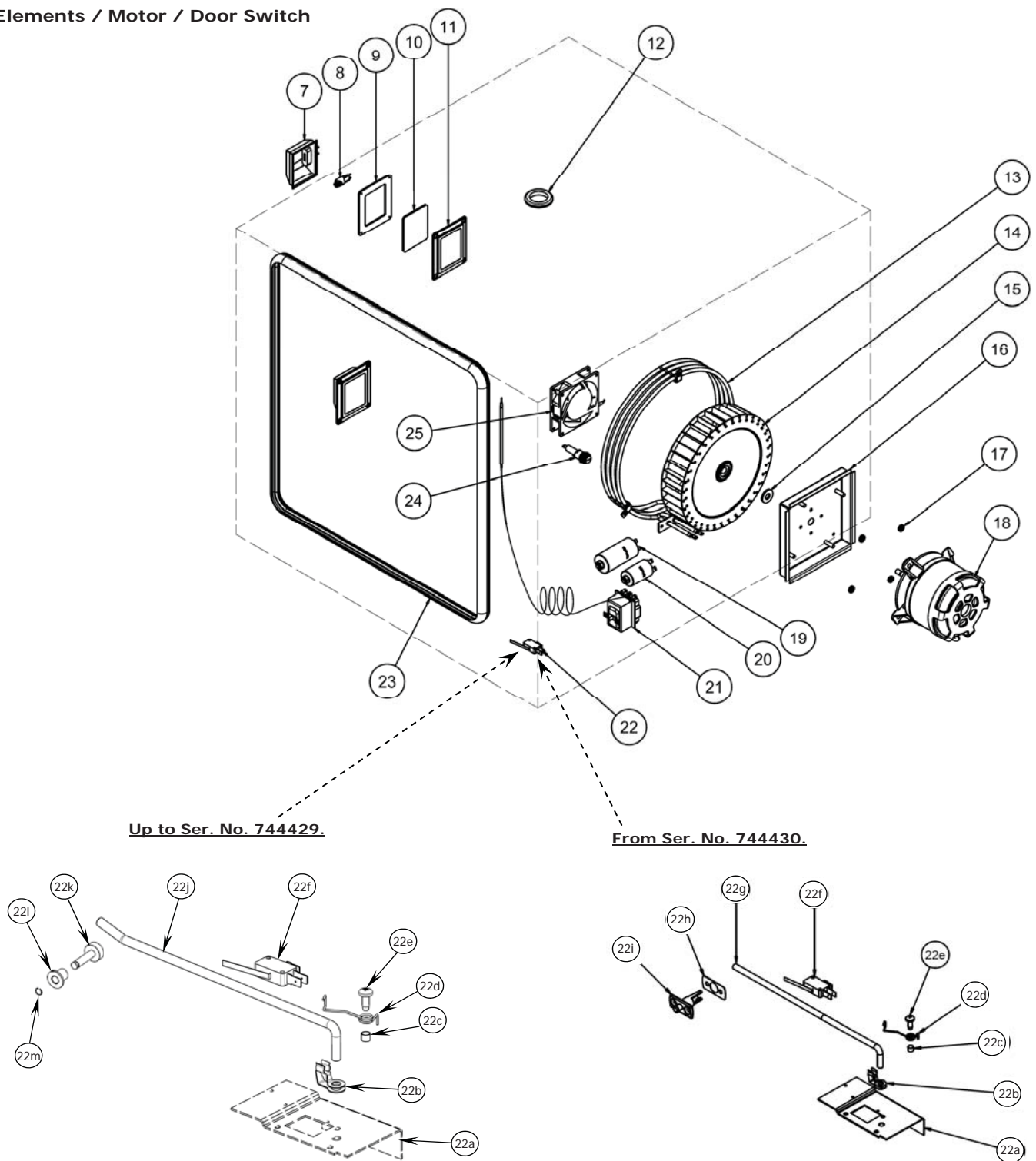


Item	Part No.	Description	*RPL
1	234224	SIDE COVER LH	D
2	233583	TOP PANEL	D
3	233585	SIDE COVER RH	D
4	232379	ADJUSTABLE LEG 3" / 76mm	D
5	232380	FOOT O-RING	C
6	234583	DOOR ASSEMBLY (COMPLETE)	C

* Recommended Parts Level	
RPL	Number of Units In-Service.
A	1-5
A+B	5-10
A+B+C	10-50
A+B+C+D	50+

9 Exploded Parts Listings

Elements / Motor / Door Switch



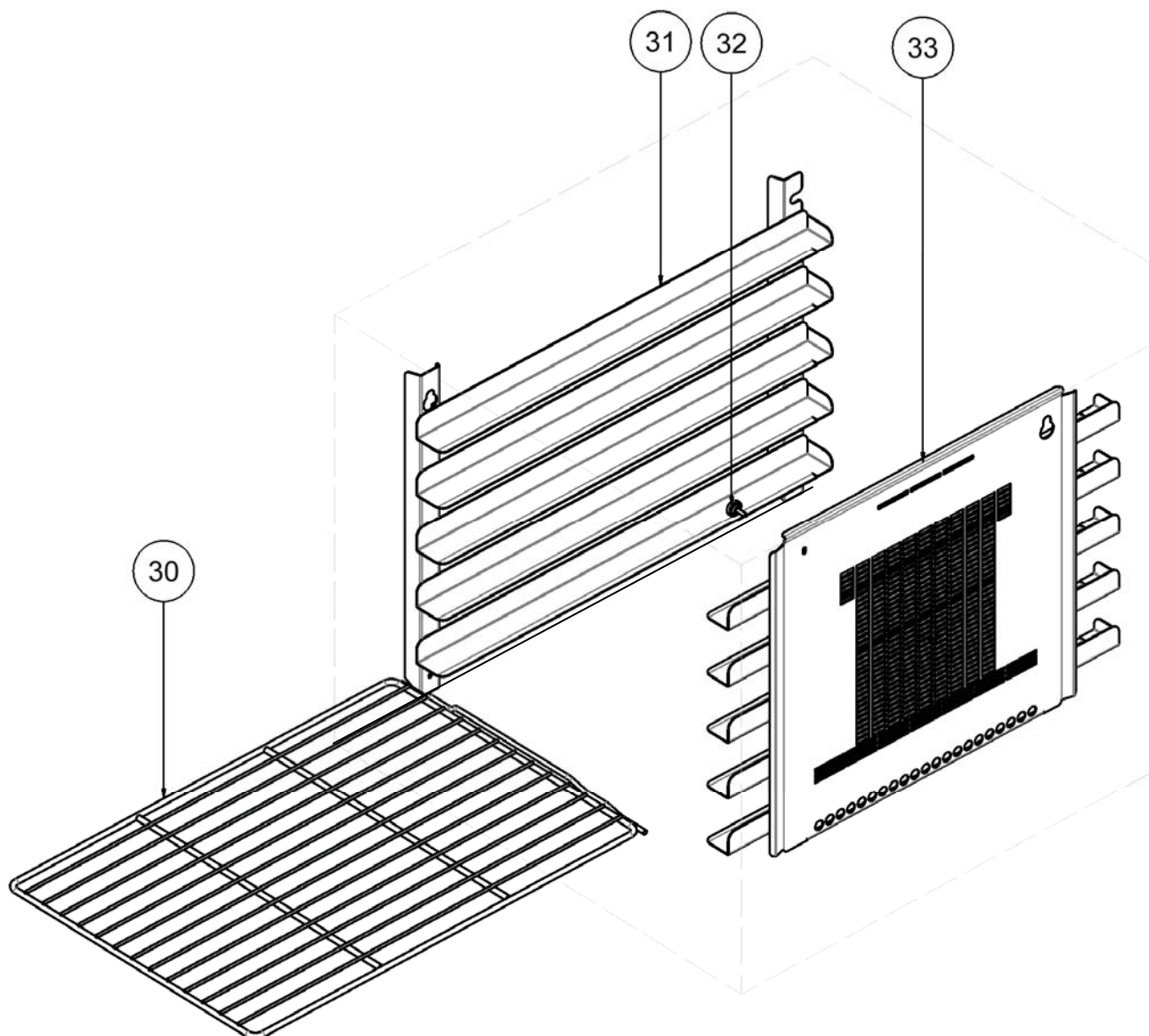
Elements / Motor / Door Switch - Parts List

Item	Part No.	Description	*RPL
7	236214	LAMP HOLDER (Bulb Included).	B
8	231814	LAMP G9/25W 230V HALOGEN.	A
9	021354	GASKET.	A
10	021352	GLASS LENS.	A
11	021353	SUPPORT FRAME.	A
12	010761	GROMMET 1½" RUBBER	D
13	236107K	OVEN ELEMENT KIT 6300W 240V	B
	236108K	OVEN ELEMENT KIT 6300W 220V	B
---	236264	ELEMENT GASKET (not shown)	B
14	234138	FAN D220 x H50 (For 50Hz)	C
	234625	FAN D200 x H50 (For 60Hz)	C
----	235420	FAN PULLER / TIGHTENER (not shown)	C
15	235610	MOTOR SHAFT SEAL	B
16	237342	MOTOR MOUNTING PLATE, E32	B
17	237482	SPACER D12-6.5x3	D
18	237335	FAN MOTOR L7- EB50 2/4 pole 2 speed	C
19	236053	MOTOR CAPACITOR 6.3uF 60HZ ONLY (Up to Ser No. 744429)	B
	236054	MOTOR CAPACITOR 8uF 50HZ ONLY (Up to Ser No. 744429)	B
	234252	CAPACITOR 10uF QC (From Ser No. 744430)	B
20	234875	CAPACITOR 3uF DOUBLE QC M8 STUD (From Ser No. 744430)	B
21	234821	OVERTEMP THERMOSTAT 355°C / 670°F	A
22	-----	MICROSWITCH ASSY	--
22a	232911	Microswitch Bracket	D
22b	017929	Damper Rod Clip	D
22c	003397	Spacer Plated	D
22d	235354	Microswitch Return Spring E32	C
22e	041043	Screw M5 x 12 Tapitite PHIL	D
22f	024802	Door Microswitch	A
22g	236886	Microswitch Rod (From Ser No. 744430)	D
22h	236885	Microswitch Button Gasket	D
22i	236880	Microswitch Button Assy	D
22j	234403	Microswitch Rod (Up to Ser No. 744429)	D
22k	021637	Microswitch Button	D
22l	013610	Pivot Bush	D
22m	021638	Pin Circlip	D
23	232666	OVEN SEAL	D
24	234802	FUSE HOLDER 16A 250V (not Korea)	D
---	234803	FUSE 10A (not Korea) (not shown)	A
25	234460	COOLING FAN 92x92x25 230V 50/60Hz	B

* Recommended Parts Level	
RPL	Number of Units In-Service.
A	1-5
A+B	5-10
A+B+C	10-50
A+B+C+D	50+

9 Exploded Parts Listings

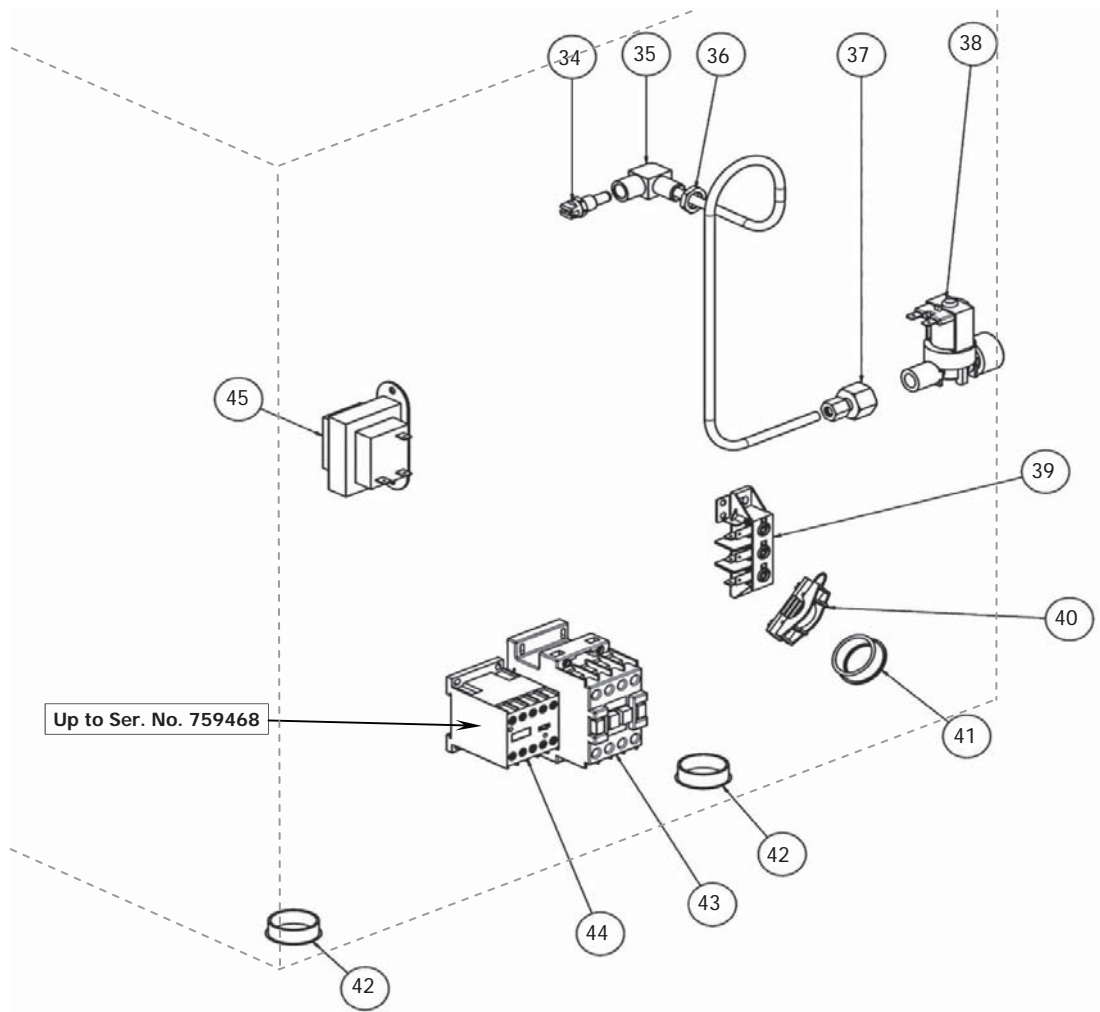
Oven Racks



Item	Part No.	Description	*RPL
30	233649	OVEN RACK	D
31	234658	SIDE RACK LH 5 TRAY	D
---	234656	SIDE RACK LH 4 TRAY	D
---	238410	SIDE RACK LH 4 TRAY (400 x 600)	D
---	235260	SIDE RACK LH 5 TRAY GN	D
---	234660	SIDE RACK LH 3 TRAY	D
32	233552	THUMBSCREW	D
33	236546	SIDE RACK RH 5 TRAY	D
---	234657	SIDE RACK RH 4 TRAY	D
---	238411	SIDE RACK RH 4 TRAY (400 x 600)	D
---	235263	SIDE RACK RH 5 TRAY GN	D
---	234663	SIDE RACK RH 3 TRAY	D
Not Shown.	235262	FAN BAFFLE FOR GN RACKS	D

* Recommended Parts Level	
RPL	Number of Units In-Service.
A	1-5
A+B	5-10
A+B+C	10-50
A+B+C+D	50+

Gear Plate / Water Connection Components

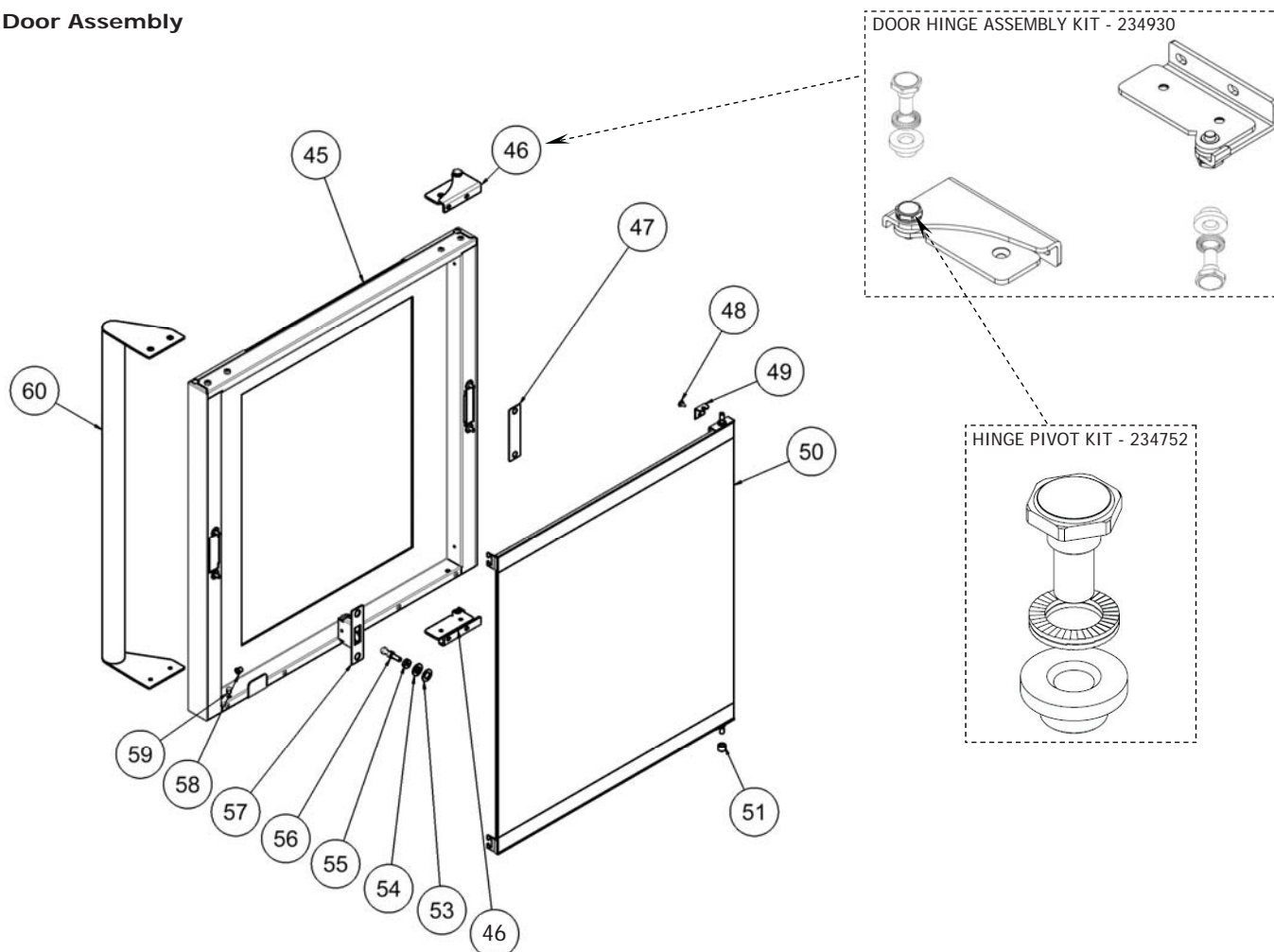


Item	Part No.	Description	*RPL
34	021057	SPRAY NOZZLE	C
35	234774	WATER TUBE	D
36	013215	NUT BRASS	D
37	020869	FEMALE CONNECTOR	D
38	020851	WATER SOLENOID	A
Not Shown	025922	ADAPTOR BRASS 3/4" BSP. (USA / CANADA ONLY)	D
	021527	WASHER RUBBER. (USA / CANADA ONLY)	A
39	026160	TERMINAL BLOCK	D
40	026161	CABLE CLAMP	D
41	019213	SNAP BUSH Ø31.5	D
42	022997	DOME PLUG 32mm	D
43	231738	CONTACTOR 25A 3P+1NO 230V50/60	B
44	231742	CONTACTOR MINI 3P+1NC, 230V (Up to Ser. No.759468 Only)	B
45	234429	TRANSFORMER 208/240V x 12VAC SEC 20VA	B

* Recommended Parts Level	
RPL	Number of Units In-Service.
A	1-5
A+B	5-10
A+B+C	10-50
A+B+C+D	50+

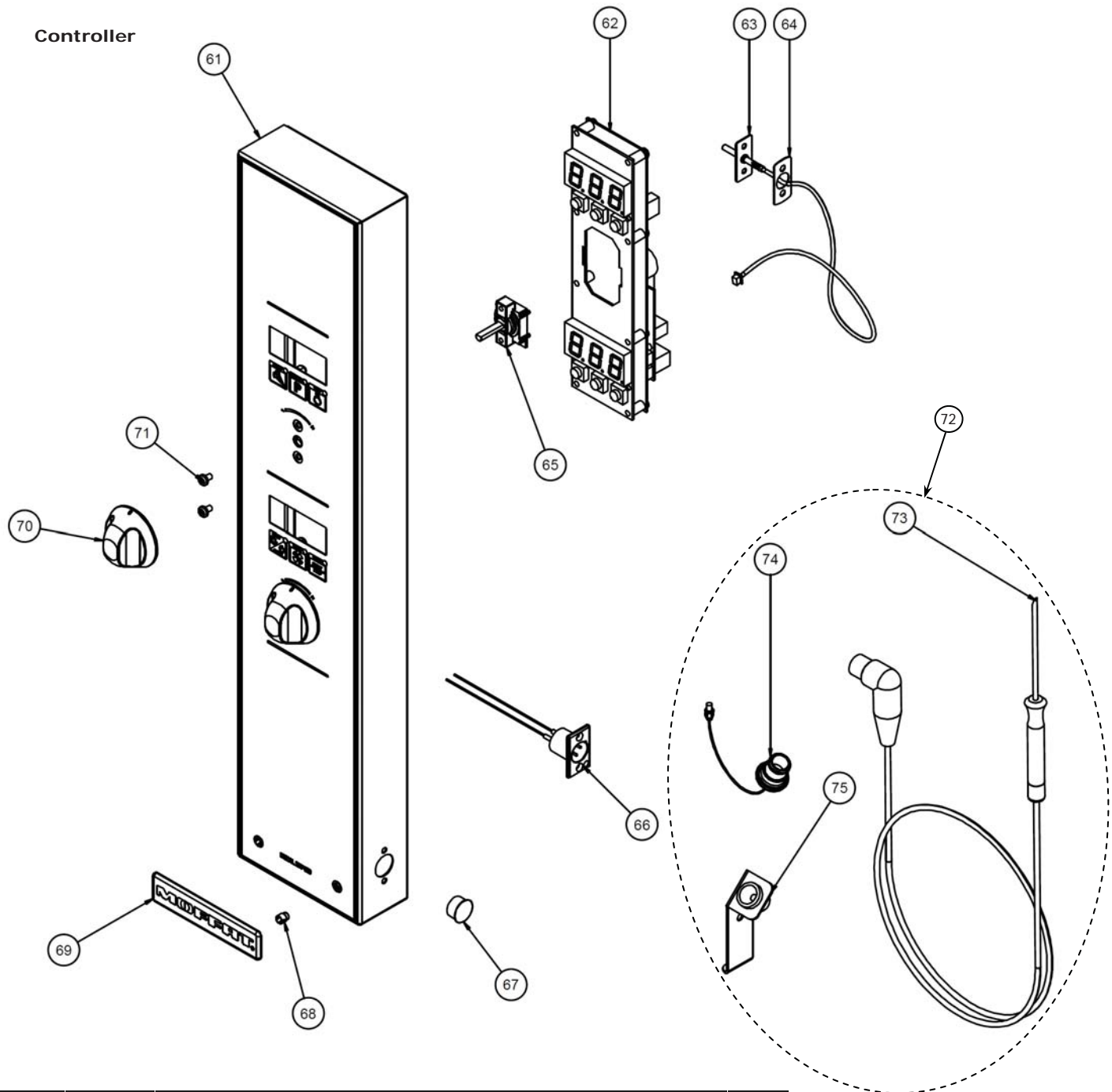
9 Exploded Parts Listings

Door Assembly



Item	Part No.	Description	*RPL
45	235275	DOOR OUTER GLASS ASSEMBLY	C
46	234930	DOOR HINGE ASSEMBLY KIT - which includes:-	B
		<i>Door Hinge Assy Bottom</i>	
		<i>Door Hinge Assy Top</i>	
---	234752	HINGE PIVOT KIT - which includes the following:-	
		<i>Door Hinge Pivot Pin</i>	
		<i>Washer M8 Nord-Lock T316</i>	
		<i>Door Hinge Pivot Bush</i>	
47	234725	DOOR CATCH BLANKING PLATE	C
48	041045	SCREW 8 x 3/8" TRUSS HD PHL NP	D
49	234779	INNER GLASS RETAINING CLIP	C
50	234757	DOOR INNER GLASS ASSY	C
51	234767	INNER GLASS PIVOT SPACER	D
53	235105	DOOR STRIKE ESCUTCHEON WASHER	C
54	235104	DOOR STRIKE PIN ESCUTCHEON	C
55	235278	STRIKE LOCKING NUT	C
56	235277	DOOR ROLLER CATCH STRIKE PIN	C
57	234580	DOOR ROLLER CATCH	C
58	234818	INNER GLASS LATCHING BUSH	D
59	234835	DOME PLUG	D
60	234581	DOOR HANDLE WA	D

* Recommended Parts Level	
RPL	Number of Units In-Service.
A	1-5
A+B	5-10
A+B+C	10-50
A+B+C+D	50+



Item	Part No.	Description	*RPL
61	235790	CONTROL PANEL LAMINATED E32D (<i>up to Ser. No. 759468</i>)	D
	237445	CONTROL PANEL LAMINATED E32D/E33D (<i>from Ser. No. 759469</i>)	D
62	236256	DIGITAL CONTROLLER KIT	B
63	237447	TEMP PROBE PT1000 31D/32D/33D	B
64	236885	TEMP PROBE GASKET	B
65	234450	ENCODER MOMENTARY	B
66	235846	PANEL SOCKET CORE TEMP - D SERIES	C
67	236192	DOME PLUG 15.9	D
68	228132	TUBE CLIP #5	D
69	233865	BADGE MOFFAT	D
70	234447	KNOB TURBOFAN INDEX	D
71	041425	SCREW M4 X 6 PAN HD PHIL NP	D
72	236060	CORE TEMP PROBE KIT (<i>which includes:-</i>)	B
73	235845	CORE TEMP PROBE (PT1000)	B
74	235847	DUST CAPE CORE TEMP SOCKET	D
75	236486	CORE TEMP PROBE HOLDER	C
Not Shown	748019	SCREW M4 x 10 TAPTITE PAN POZI ZP	D

* Recommended Parts Level	
RPL	Number of Units In-Service.
A	1-5
A+B	5-10
A+B+C	10-50
A+B+C+D	50+