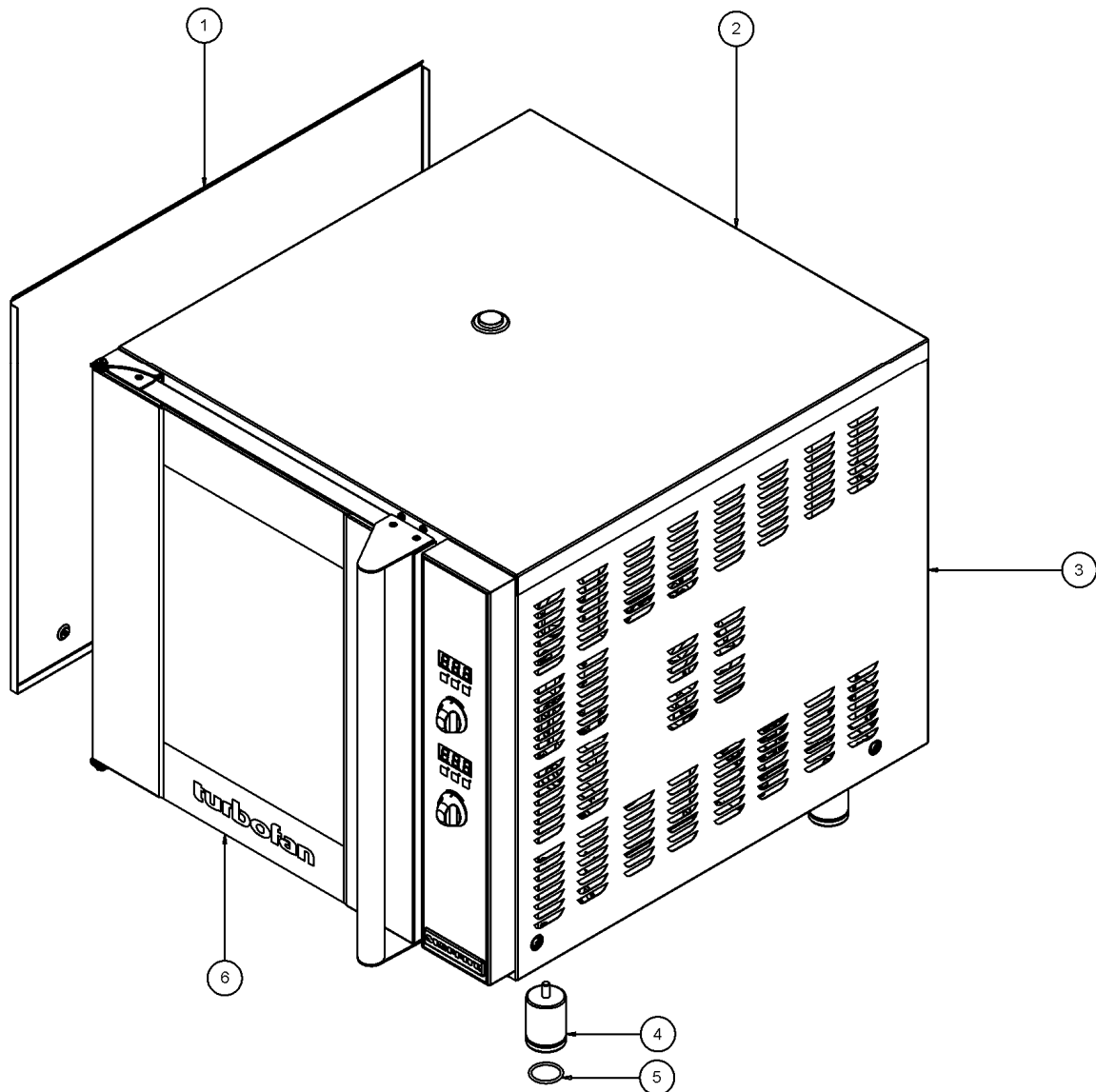


Outer Assembly

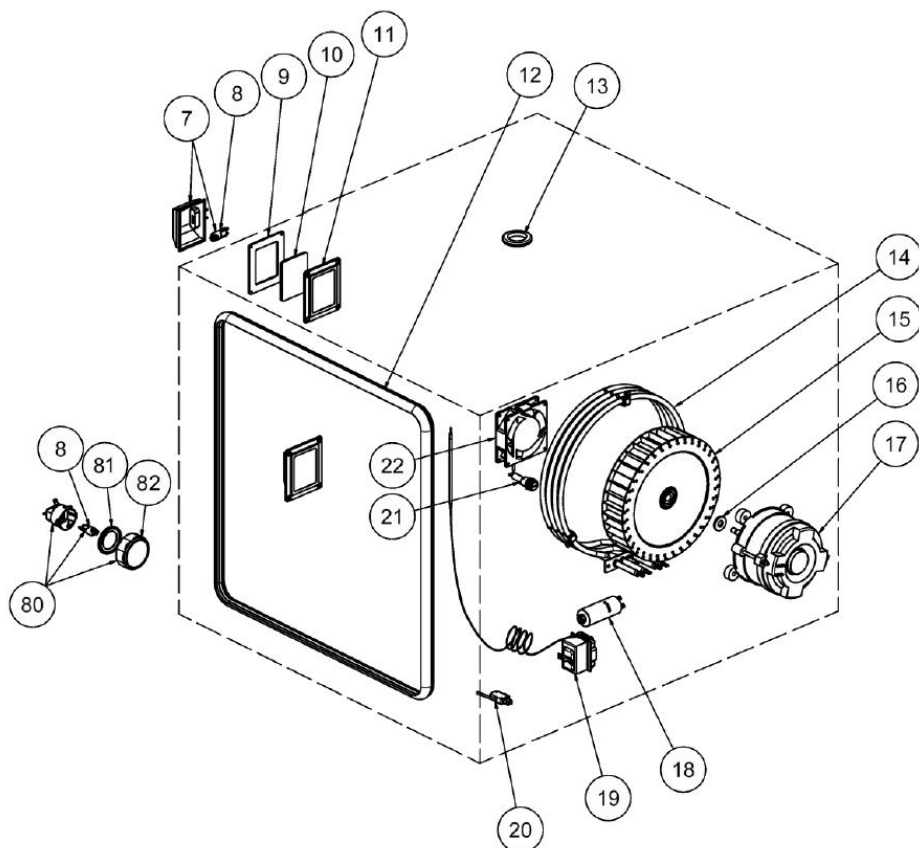


Item	Part No.	Description	*RPL
1	234224	SIDE COVER LH	D
2	233583	TOP PANEL	D
3	233585	SIDE COVER RH	D
4	232379	ADJUSTABLE LEG 3" / 76mm	D
5	232380	FOOT O-RING	C
6	234583	DOOR ASSEMBLY (COMPLETE)	C

*Recommended Parts Level	
RPL	Number of Units In-Service.
A	1-5
A+B	5-10
A+B+C	10-50
A+B+C+D	50+

9 Exploded Parts Listings

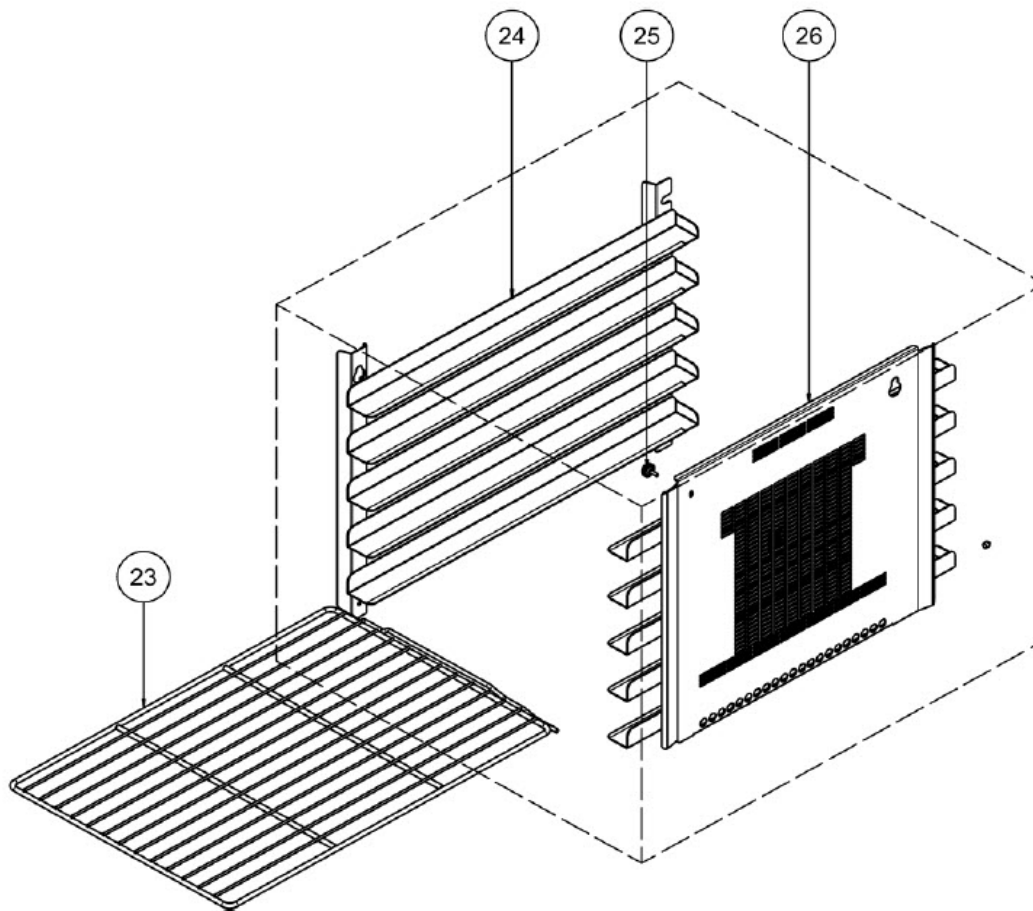
Elements & Motor



*Recommended Parts Level	
RPL	Number of Units In-Service.
A	1-5
A+B	5-10
A+B+C	10-50
A+B+C+D	50+

Item	Part No.	Description	*RPL
7	236214	LAMP HOLDER (Bulb Included).	B
8	231814	LAMP G9/25W 230V HALOGEN.	A
9	021354	GASKET.	A
10	021352	GLASS LENS.	A
11	021353	SUPPORT FRAME.	A
12	232666	OVEN SEAL	A
13	010761	GROMMET 1½" RUBBER	D
14	236107K	OVEN ELEMENT KIT 6300W 240V	B
	236108K	OVEN ELEMENT KIT 6300W 220V	B
	236264	ELEMENT GASKET (not shown)	B
15	234138	FAN 8½" / 220mm FOR 50 Hz	C
	234625	FAN 8⅞" / 200mm FOR 60 Hz	C
	235420	FAN PULLER / TIGHTENER (not shown)	C
17	234468	FAN MOTOR 200W 220-240V 50Hz AU, NZ, UK	C
	234595	FAN MOTOR 300W 208-240V 60Hz US, CAN, KR	C
16	235610	MOTOR SHAFT SEAL From Ser No. 708428	B
18	234252	CAPACITOR 10µF	B
19	025400	OVERTEMP THERMOSTAT 360°C / 680°F (1-POLE) To Lot # 1035999	A
	234821	OVERTEMP THERMOSTAT 355°C / 670°F (3-POLE) From Lot # 1036001	A
20	024802	MICROSWITCH	A
	235354	MICROSWITCH RETURN SPRING E32 (not shown) From Lot # 1105001	B
	235355	MICROSWITCH RETURN SPRING UPGRADE KIT To Lot # 1104999	C
21	234802	FUSE HOLDER 16A 250V (not Korea)	D
	234803	FUSE 10A (not Korea)	A
22	234460	COOLING FAN 92x92x25 230V 50/60Hz	B
80	233863	OVEN LAMP ASSY G9 58mm LENS 230V (COMPLETE)	A
81	233883	OVEN LAMP SEAL	A
82	233115	OVEN LAMP LENS	A

Oven Racks

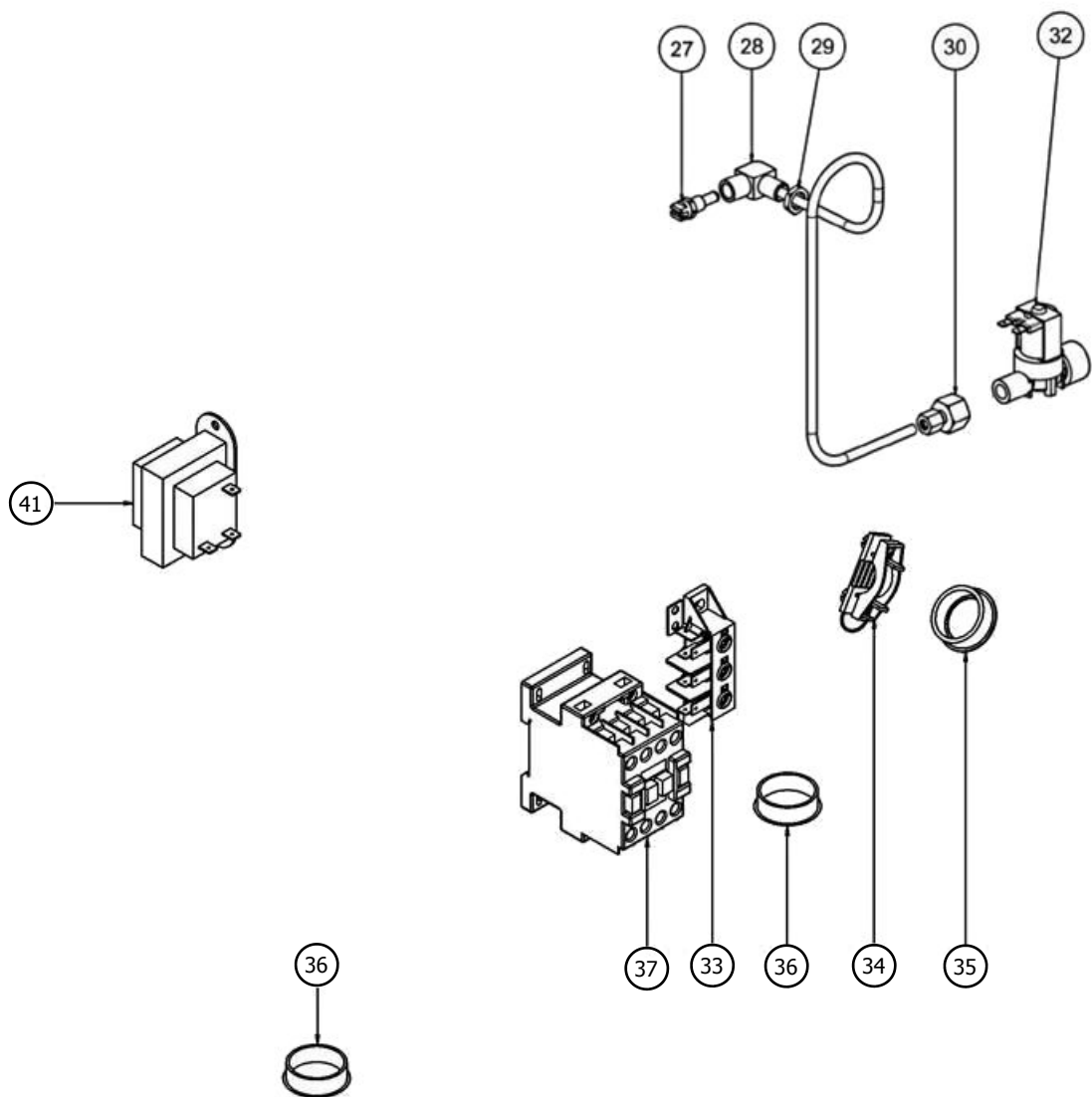


Item	Part No.	Description	*RPL
23	233649	OVEN RACK E32 18" x 26"	D
24	234658	SIDE RACK LH 5 TRAY	D
	234656	SIDE RACK LH 4 TRAY	D
	234660	SIDE RACK LH 3 TRAY	D
	235260	SIDE RACK LH 5xGN TRAY	D
25	233552	THUMBSCREW	D
26	234659	SIDE RACK RH 5 TRAY	D
	234657	SIDE RACK RH 4 TRAY	D
	234663	SIDE RACK RH 3 TRAY	D
	235263	SIDE RACK RH 5xGN TRAY	D
	235262	FAN BAFFLE FOR GN TRAY (Not Shown)	D

*Recommended Parts Level	
RPL	Number of Units In-Service.
A	1-5
A+B	5-10
A+B+C	10-50
A+B+C+D	50+

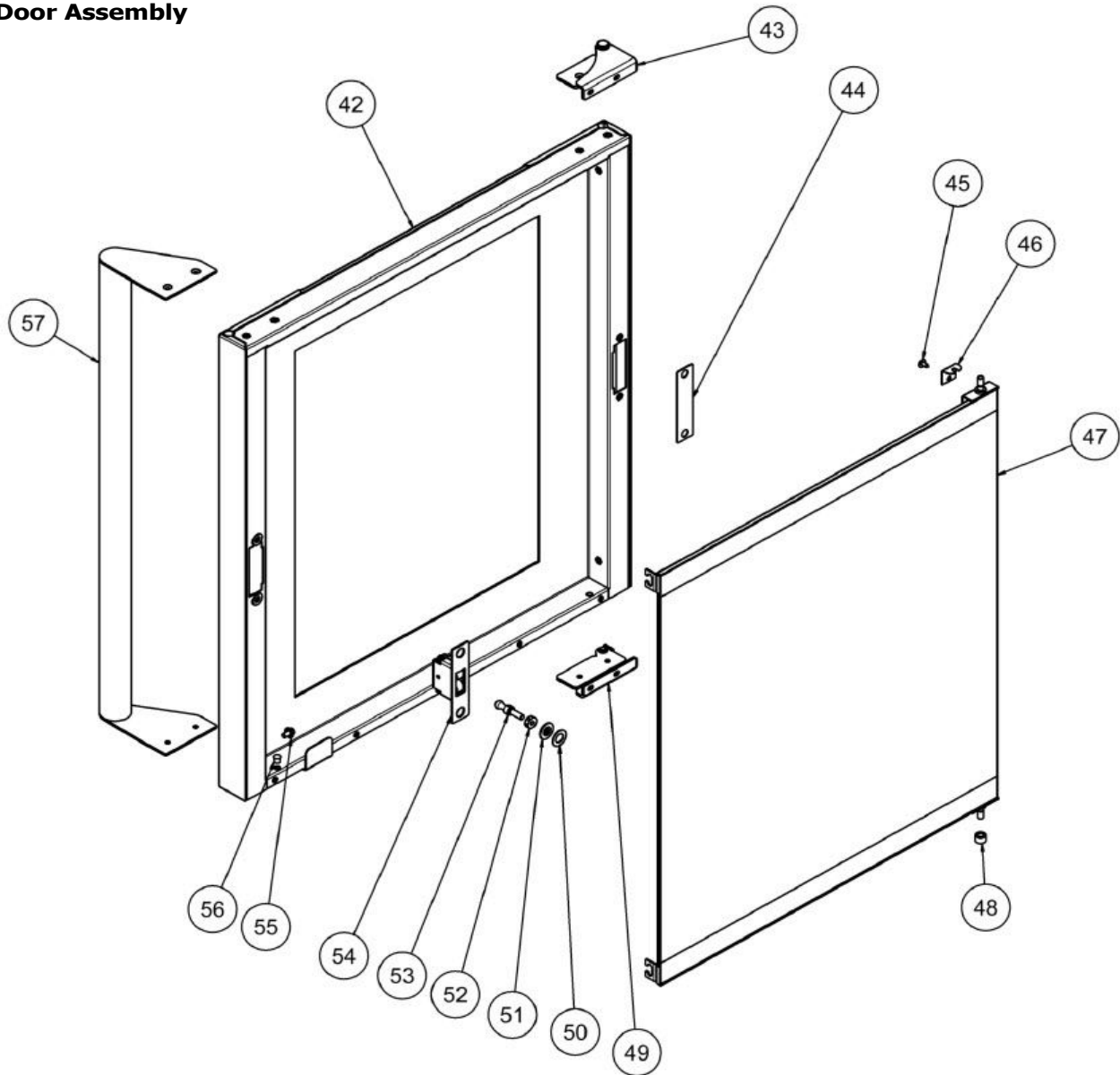
9 Exploded Parts Listings

Gear Plate



Item	Part No.	Description	*RPL
27	021057	SPRAY NOZZLE ASSEMBLY	C
28	234774	WATER TUBE	D
29	013215	BACK NUT BRASS ¼" BSP	D
30	020869	FEMALE CONNECTOR ⅜" BSP TO ¼" COMP	D
32	020851	WATER SOLENOID	A
Not Shown	025922	ADAPTOR BRASS ¾" BSP. (USA / CANADA ONLY)	D
	021527	WASHER RUBBER. (USA / CANADA ONLY)	A
33	026160	TERMINAL BLOCK	D
34	026161	CABLE CLAMP	D
35	019213	SNAP BUSH Ø31.5	D
36	022997	DOME PLUG 32mm	D
37	231738	CONTACTOR 25A 3P+1NO 230V50/60 E32D4 ONLY	B
41	234429	TRANSFORMER 208 / 240V x 12VAC SEC 20VA	B

*Recommended Parts Level	
RPL	Number of Units In-Service.
A	1-5
A+B	5-10
A+B+C	10-50
A+B+C+D	50+

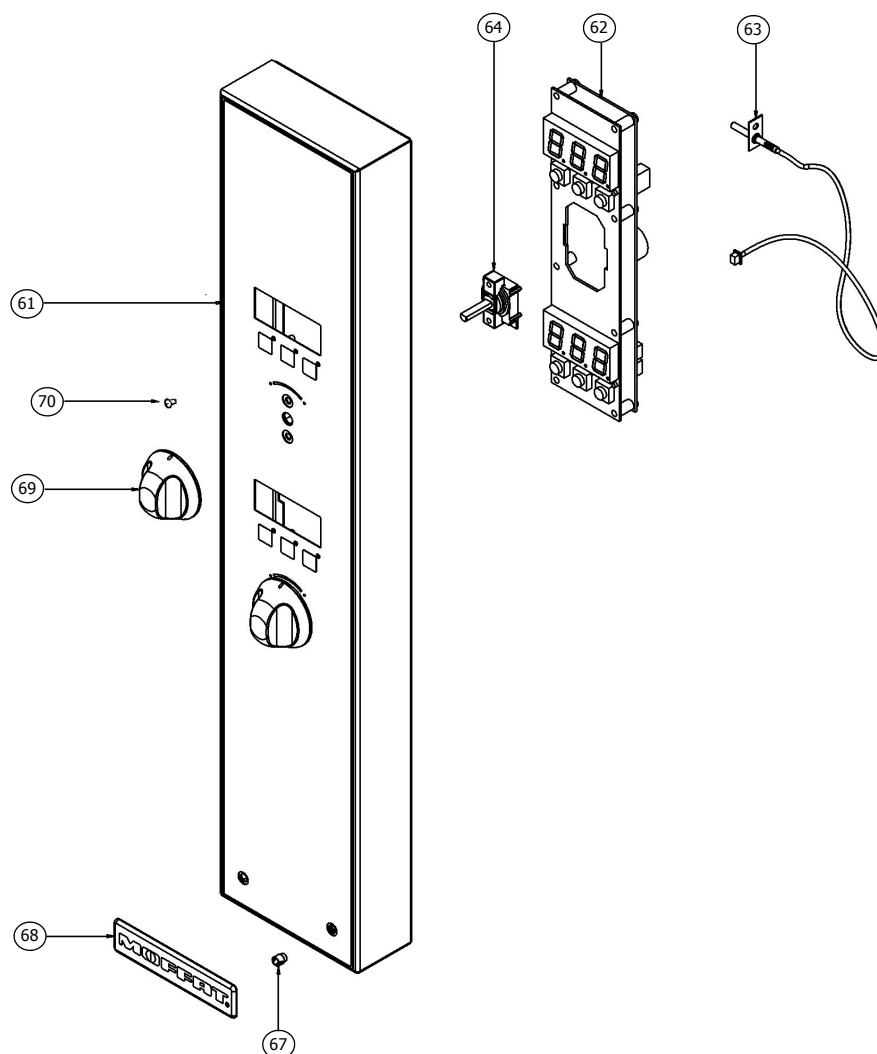
Door Assembly

Item	Part No.	Description	*RPL
42	235275	DOOR OUTER GLASS ASSEMBLY	C
43	234626	DOOR HINGE ASSEMBLY TOP	B
44	234725	DOOR CATCH BLANKING PLATE	C
45	041045	SCREW 8 x 3/8" TRUSS HD PHL NP	D
46	234779	INNER GLASS RETAINING CLIP	C
47	234757	DOOR INNER GLASS ASSY	C
48	234767	INNER GLASS PIVOT SPACER	D
49	234627	DOOR HINGE ASSEMBLY BOTTOM	B
50	235105	DOOR STRIKE ESCUTCHEON WASHER	C
51	235104	DOOR STRIKE PIN ESCUTCHEON	C
52	235278	STRIKE LOCKING NUT	C
53	235277	DOOR ROLLER CATCH STRIKE PIN	C
54	234580	DOOR ROLLER CATCH	B
55	234818	INNER GLASS LATCHING STUD	D
56	234835	DOME PLUG	D
57	234581	DOOR HANDLE WA	D

*Recommended Parts Level	
RPL	Number of Units In-Service.
A	1-5
A+B	5-10
A+B+C	10-50
A+B+C+D	50+

9 Exploded Parts Listings

Controller



Item	Part No.	Description	*RPL
61	234448	CONTROL PANEL LAMINATED E32D	D
62	234906	DIGITAL CONTROL BOARD KIT (SINGLE SPEED FAN)	B
63	234434	OVEN TEMPERATURE PROBE	B
64	234450	ENCODER MOMENTARY	B
67	228132	TUBE CLIP #5	D
68	233865	BADGE MOFFAT	D
69	234447	KNOB TFAN INDEX	D
70	041425	SCREW M4 X 6 PAN HD PHIL NP	D

*Recommended Parts Level	
RPL	Number of Units In-Service.
A	1-5
A+B	5-10
A+B+C	10-50
A+B+C+D	50+