

XL Series 2

Parts Manual



WASHTECH®
PROFESSIONAL WASH SYSTEMS



Spare Parts

DESCRIPTION	PART NO
Cabinet & Door	
Control Panel Sub-Assembly	303 10008
Control Panel Label	400 70189
Spring Door 27 x 735 x 5	326 30019
Controls & Indicators	
Contactor	600 30337
Door Reed Switch	600 30183
Door Relay	600 30223
Electronic Timer	600 30513
Pressure Switch 140/60mm	600 30479
Ready Light	600 30529
Run Light	600 30528
Selector Switch 4 Position	600 30269
Selector Switch Knob	600 30524
Temperature Gauge Sensor 1.8m	600 30604
Temperature Gauge	600 30546
Terminal Strip 12 Way	3229
Heating Components	
Over Temperature Thermostat	600 30088
Rinse Element 5 KW	600 30497
Rinse Tank Assembly	303 10029
Rinse Thermostat	30201
Wash Element 2.5 KW	600 30226
Wash Thermostat	30201
Hoses & Fittings	
Hose Clip ASS05	ASS05
Pressure Switch Hose	3067
Rinse Hose	600 60073
Wash Pump Inlet Hose	C200359
Wash Pump Outlet Hose	61941
Wash Tee Connection Hose	6195
Wash Tee to Manifold Hose	6195

Spare Parts

DESCRIPTION	PART NO
Pumps & Solenoids	
Detergent Pump Hose	600 30148
Detergent Pump	600 30526
Detergent Squeeze Tube	600 30134
Rinse Aid Pump	600 30480
Rinse Aid Squeeze Tube	600 30119
Solenoid Valve	3342
Wash Pump Capacitor 16 μ F	3894
Wash Pump	600 30412
Wash Tank Components	
Drain Upstand	400 10145
Pressure Bell	400 90135
Pressure Bell O Ring	ARP 205
Scrap Tray	351 12003
Wash Pump Filter	352 10026

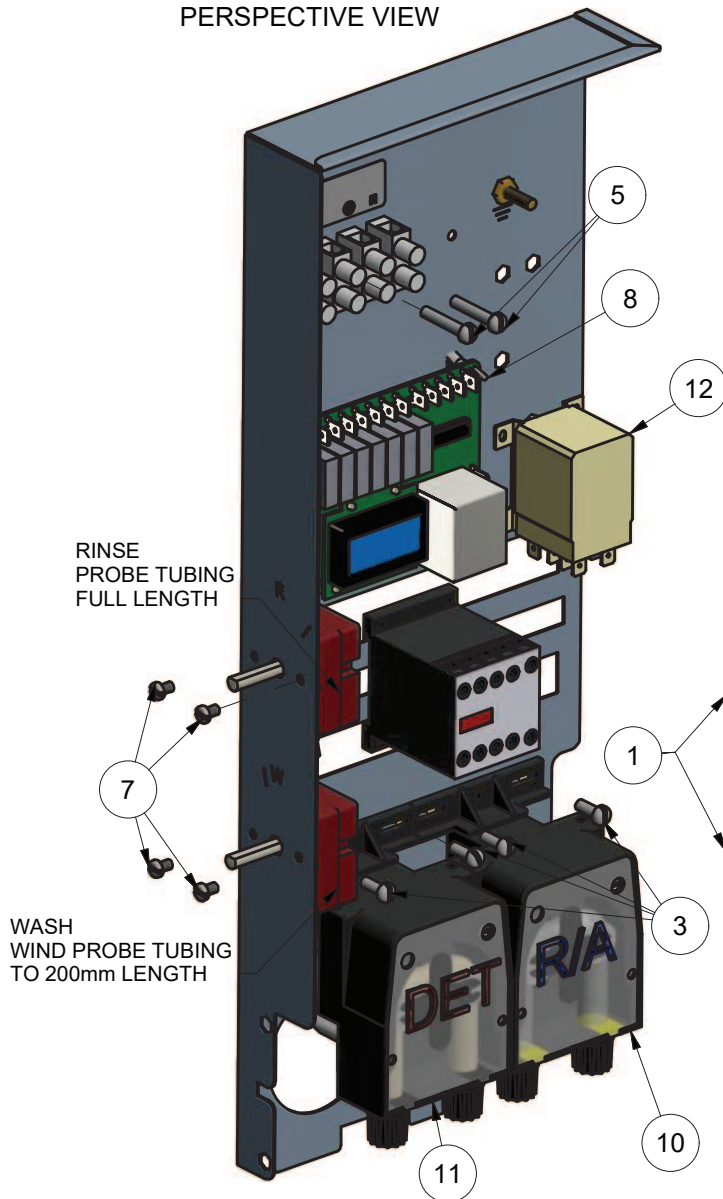
Note:

For more parts look in the section “Assembly Diagrams”.

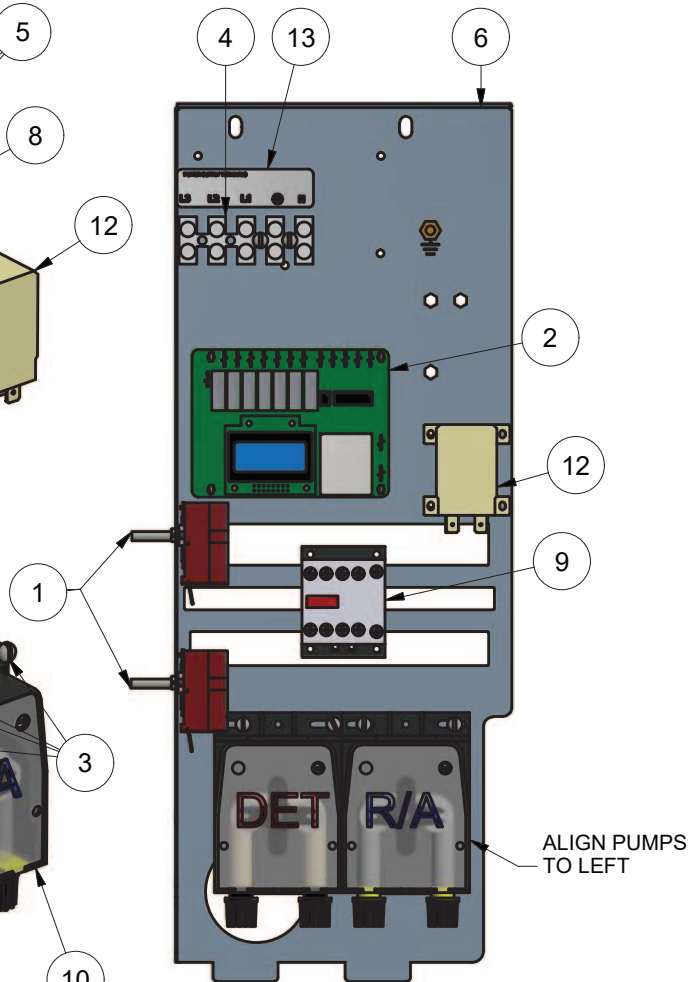
XL-2 WIRING TRAY

351 14020 2/08/2017 REV 1-B

PERSPECTIVE VIEW



FRONT VIEW

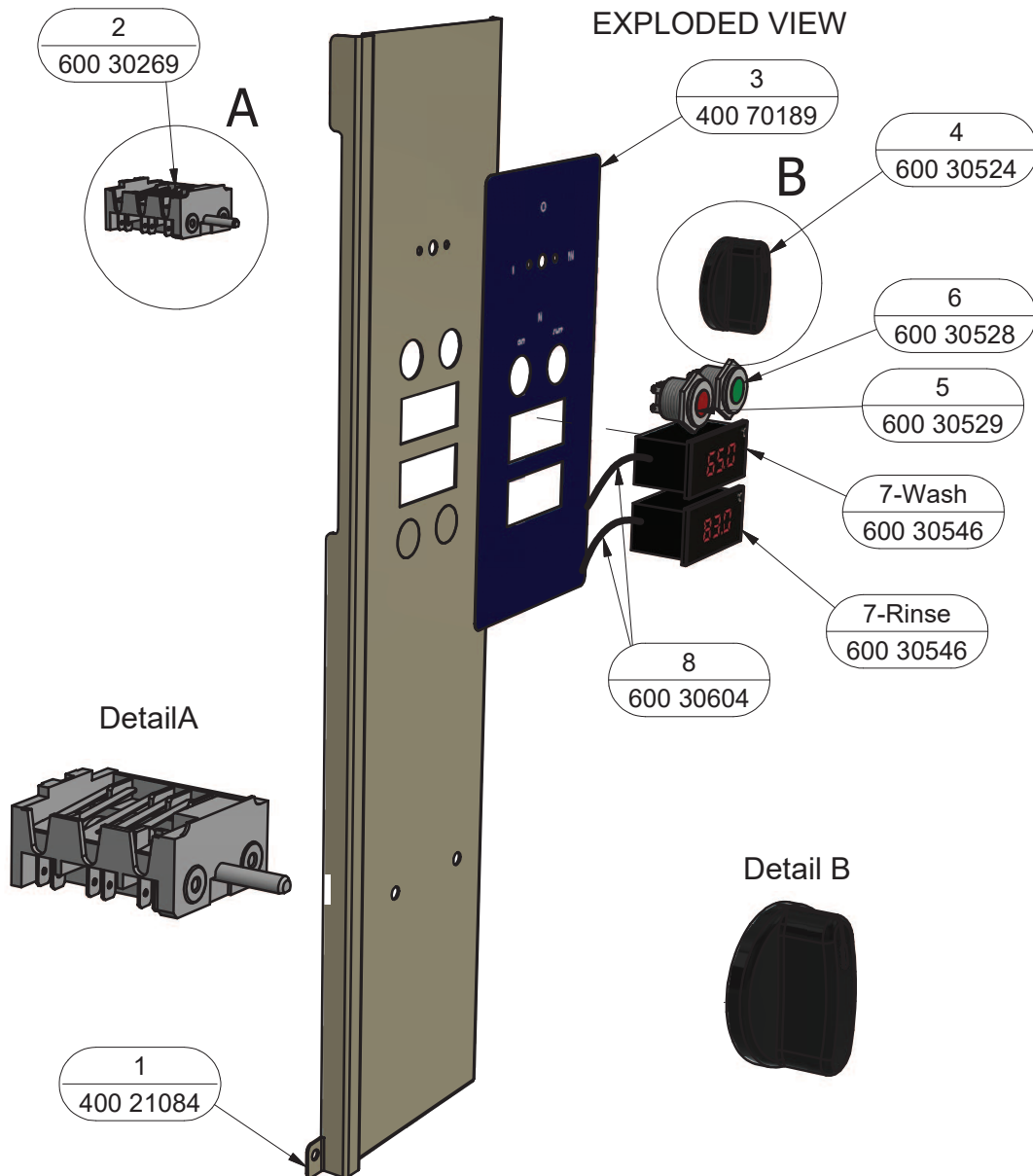


Parts List

ITEM	PART NUMBER	DESCRIPTION	QTY
1	30201	THERMOSTAT 1 POLE	2
2	600 30513	TIMER ELECTRONIC	1
3	8801	MS PAN POZI ZP M4x12	4
4	3229	TERMINAL STRIP 12 WAY x 0.5	1
5	8802	MS PAN POZI ZP M4x25	2
6	302 10019	X-RANGE WIRING TRAY SUB-ASSEMBLY	1
7	8800	MS PAN POZI ZP M4x6	4
8	600 30527	PCB SUPPORT-END DOME HEAD	4
9	600 30337	CONTACTOR 20A 3NO/NC 230-240V	1
10	600 30480	PERISTALTIC RINSE AID PUMP ADJUSTABLE	1
11	600 30526	PERISTALTIC DETERGENT PUMP ADJUSTABLE	1
12	600 30223	JQX-12F POWER RELAY	1
13	LABEL	POWER SUPPLY TERMINAL LABEL	1

XP/XL CONTROL PANEL ASSY

303 10008 6/12/2019 REV 3-C

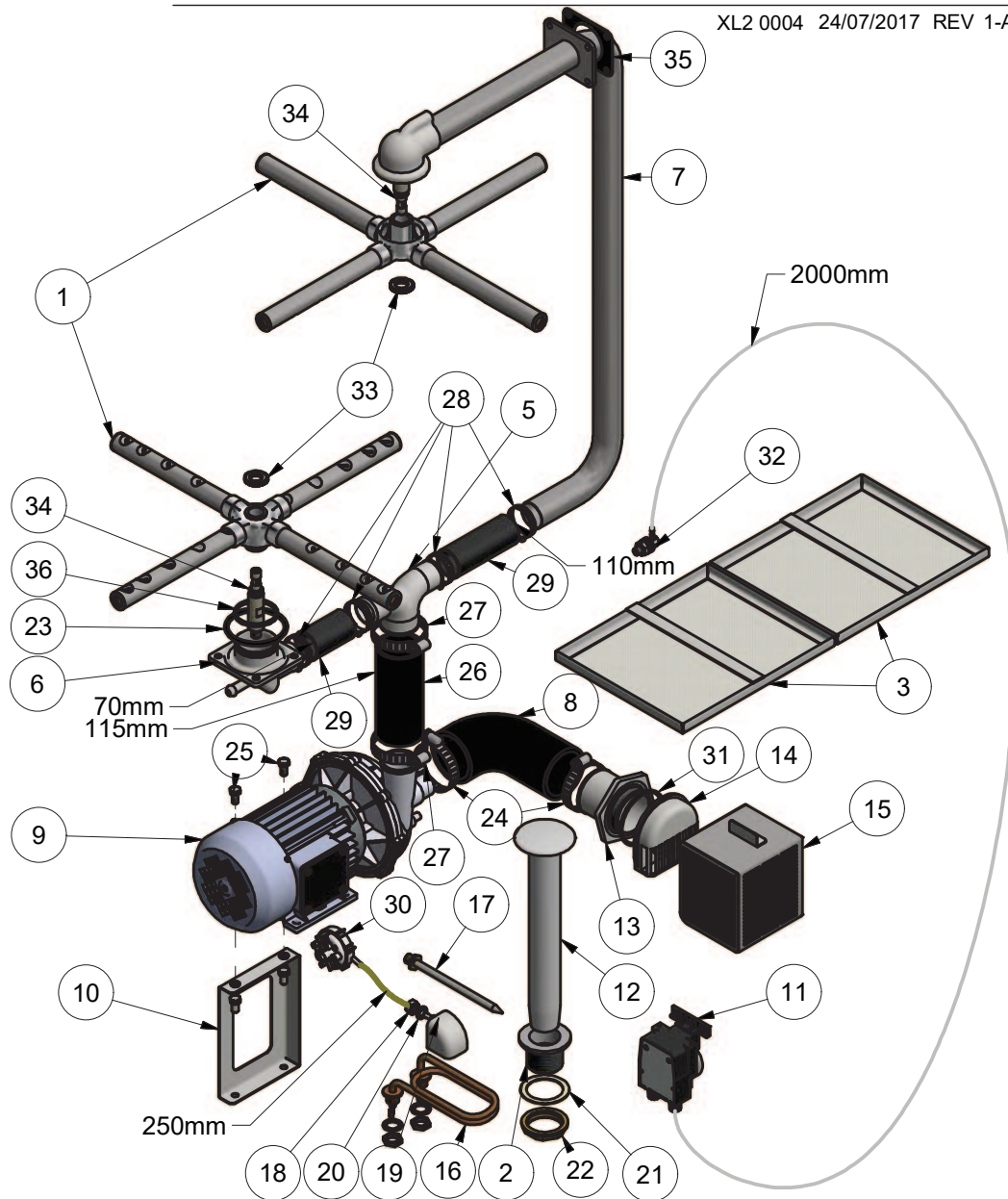


Parts List			
ITEM	PART NUMBER	DESCRIPTION	QTY
1	400 21084	M1-4/XP CONTROL PANEL	1
2	600 30269	SWITCH 4 WAY QUICK CONNECT	1
3	400 70189	Label XP/M1 Control Panel	1
4	600 30524	Knob Selector Switch	1
5	600 30529	Light Red 22mm 220VAC LED Stainless Steel	1
6	600 30528	Light Green 22mm 220VAC LED Stainless Steel	1
7	600 30546	TEMPERATURE GAUGE AG-903 (MALE TERMINAL)	2
8	600 30604	SENSOR TEMPERATURE 1.8M V3 METAL CAP (FEMALE TERMINAL)	2

DATE	DESCRIPTION	REV
6/12/19	CHANGE TEMP GAUGES, ADD SENSORS	3-C

XL-2 WASH SYSTEM

XL2 0004 24/07/2017 REV 1-A



Parts List				Parts List			
ITEM	PART NUMBER	DESCRIPTION	QTY	ITEM	PART NUMBER	DESCRIPTION	QTY
1	400 10077	Arm AL(3) Wash	2	19	400 90135	PRESSURE BELL CASTING	1
2	400 30042	WASTE DRAIN PLASTIC 40mm PLASTIC	1	20	ARP205	O-RING 11IDx18OD	1
3	351 12003	ASSEMBLY SCRAP TRAY AL(3)	2	21	1896	GASKET FOR 40mm DRAIN WASTE	1
4	600 30183	REED SWITCH STEM	1	22	6037	BACKNUT 126 x 40mm	1
5	400 90126	50mm x 38mm REDUCER TEE	1	23	ARP336	O-RING ARP336	1
6	400 90140	AL LOWER WASH TEE	1	24	ASS44	HOSE CLAMP ASS44	2
7	351 10016	AL3/XL-2 WASH PIPE ASSEMBLY	1	25	600 80029	M8x12 HEX HD SET SCREW T304	4
8	C200359	Hose C34 Wash Inlet	1	26	61941	Hose 50mm 2 Ply Radiator	115mm
9	600 30412	PUMP WASH 1.5Hp	1	27	ASS36	HOSE CLAMP ASS36	2
10	351 24087	XL2 WASH PUMP SUPPORT BRKT	1	28	ASS24	HOSE CLAMP ASS24	4
11	600 30526	PUMP PERI DETERGENT ADJUSTABLE	1	29	6195	HOSE 38mm 2 PLY RADIATOR	70mm + 110mm
12	400 10145	UPSTAND 305mm LETTER M	1	30	600 30479	PRESSURE SWITCH 140/60MM	1
13	400 90160	AL WASH PUMP INLET CASTING EXTERNAL	1	31	ARP233	O-RING ARP233	1
14	400 90171	AL WASH PUMP INLET CASTING INNER	1	32	600 30170	Detergent INLET SS FITTING	1
15	352 10026	AL(4) WASH PUMP INLET FILTER ASSY	1	33	280409C	Locknut SS M18	2
16	600 30226	ELEMENT 2500W 240V (THREE LOOP)	1	34	400 30362	Spindle Lower AL Wash	2
17	400 10065	ASSY THERM PROBE POCKET	1	35	400 90095	Wash Manifold Gasket Ex. 1.5mm Caf	1
18	600 80009	M10 SS HX NUT	1	36	400 30191	BLACK ACETAL SLIP RING AL	1

Wash Pump

Part Number

600 30412

Function

Pumps water from the wash tank to the wash arms providing a recirculating wash cycle.

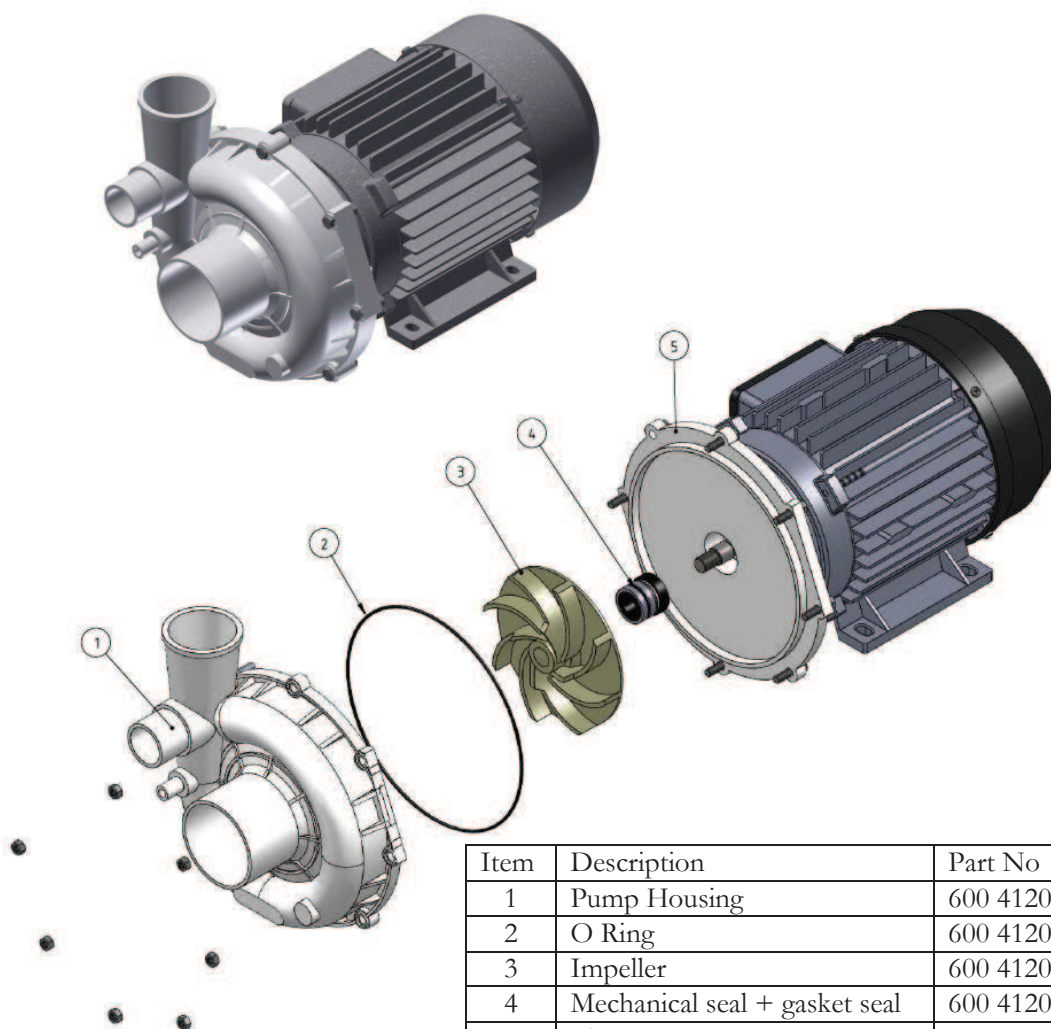
Description

Wash Pump

Power: HP 1.5 Kw 1.1
Voltage: 220-240 V 50 Hz
Amperes: 5 A

Capacitor: 16 uF 450 V
Thermal Protection: 160°C
Speed: 2750 RPM

Diagram



Item	Description	Part No
1	Pump Housing	600 41204
2	O Ring	600 41205
3	Impeller	600 41206
4	Mechanical seal + gasket seal	600 41207
5	Flange	600 41208
	Capacitor	3894

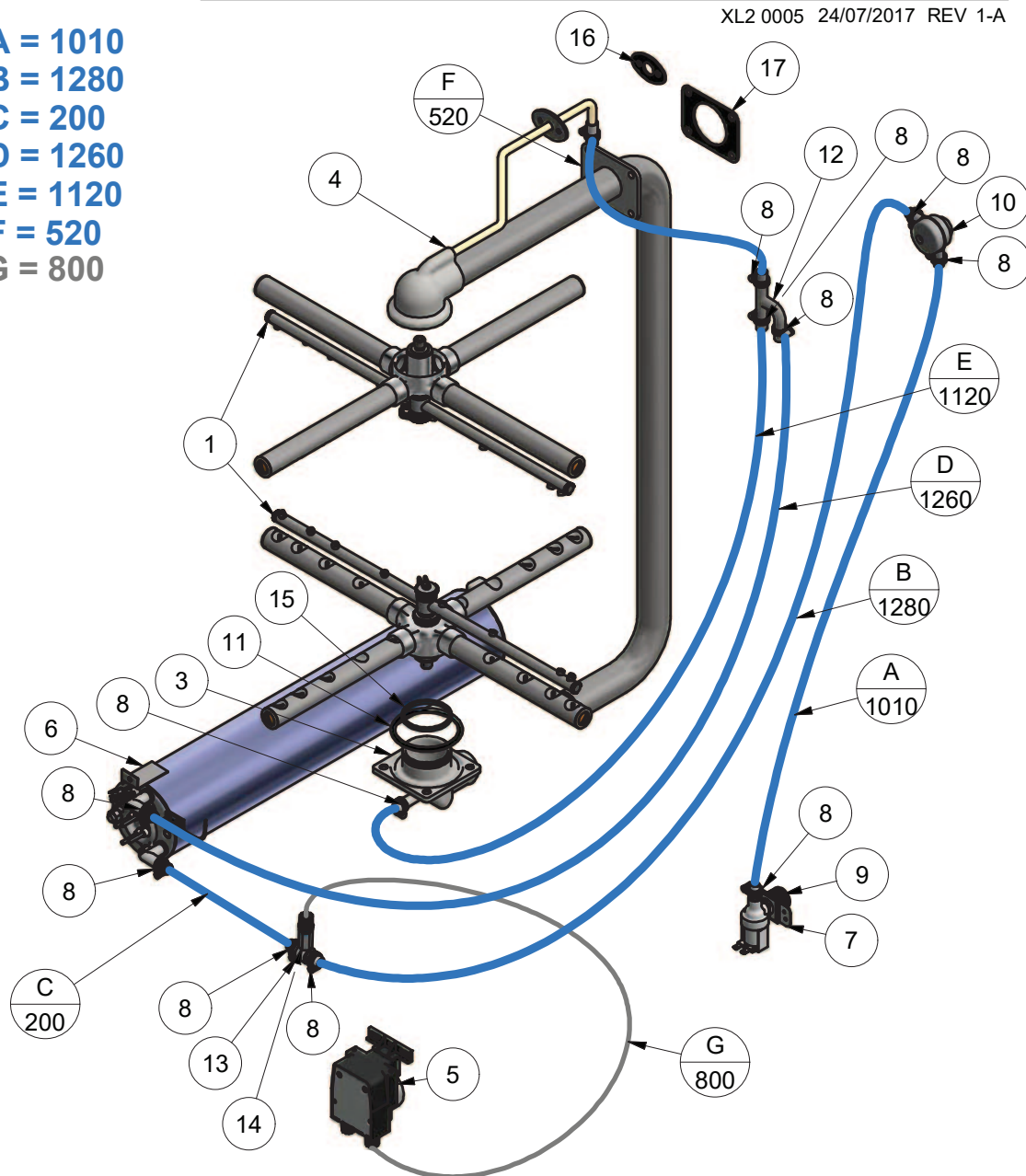
Replacement

Drain the wash tank and switch off the power.
Disconnect the wires from the pump connectors and the pump capacitor. .
Release the hose clamps on the inlet and outlet pump hoses and remove the pump.
Replace in reverse order.

XL-2 RINSE SYSTEM

XL2 0005 24/07/2017 REV 1-A

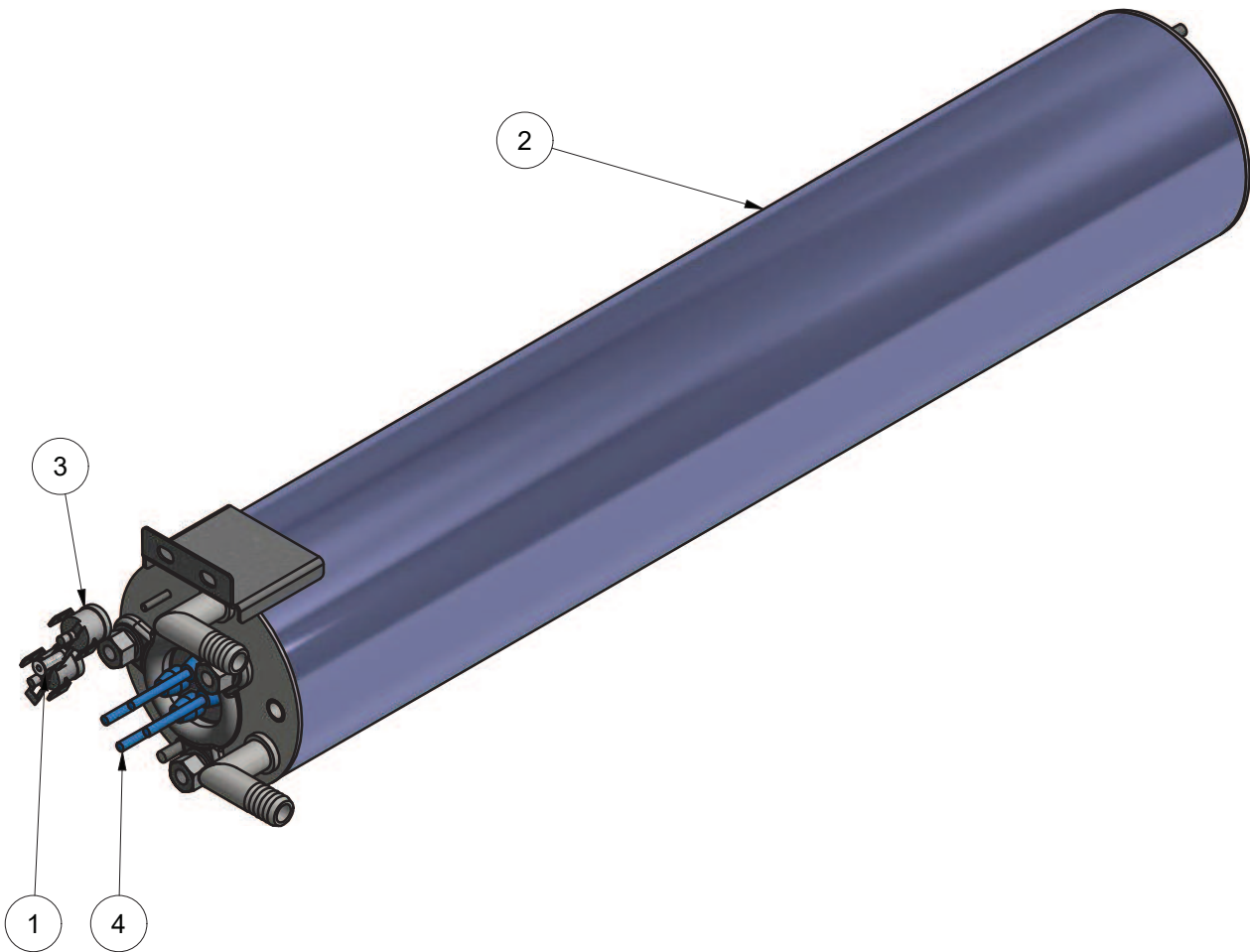
A = 1010
B = 1280
C = 200
D = 1260
E = 1120
F = 520
G = 800



Parts List				Parts List			
ITEM	PART NUMBER	DESCRIPTION	QTY	ITEM	PART NUMBER	DESCRIPTION	QTY
1	400 10239	RINSE ARM 490mm ASSEMBLY	2	9	3342	SOLENOID VALVE 1 WAY 90 DEG	1
2	600 30183	REED SWITCH STEM	1	10	600 60053	VACUUM BREAKER 1/2" ASSY	1
3	400 90140	AL LOWER WASH TEE	1	11	ARP336	O-RING ARP336	1
4	351 10016	AL3/XL-2 WASH PIPE ASSEMBLY	1	12	600 60230	HOSE TEE SS 12 X 12 X 12MM	1
5	400 30480	RINSE AID PERI PUMP ADJUSTABLE	1	13	280 30003	TEE BRACKTON RINSE AID	1
6	303 10029	XP-3(W)/XL-2 RINSE TANK SS ASSEMBLY	1	14	600 30487	NON RETURN VALVE	1
7	1247	INLET SOLENOID SUPPORT	1	15	400 30191	BLACK ACETAL SLIP RING AL	1
8	ASS05	HOSE CLAMP	12	16	400 90096	RINSE DISTRIBUTION GASKET	1
				17	400 90095	WASH MANIFOLD GASKET	1

XP-3(S)/XL2 RINSE TANK SS ASSEMBLY

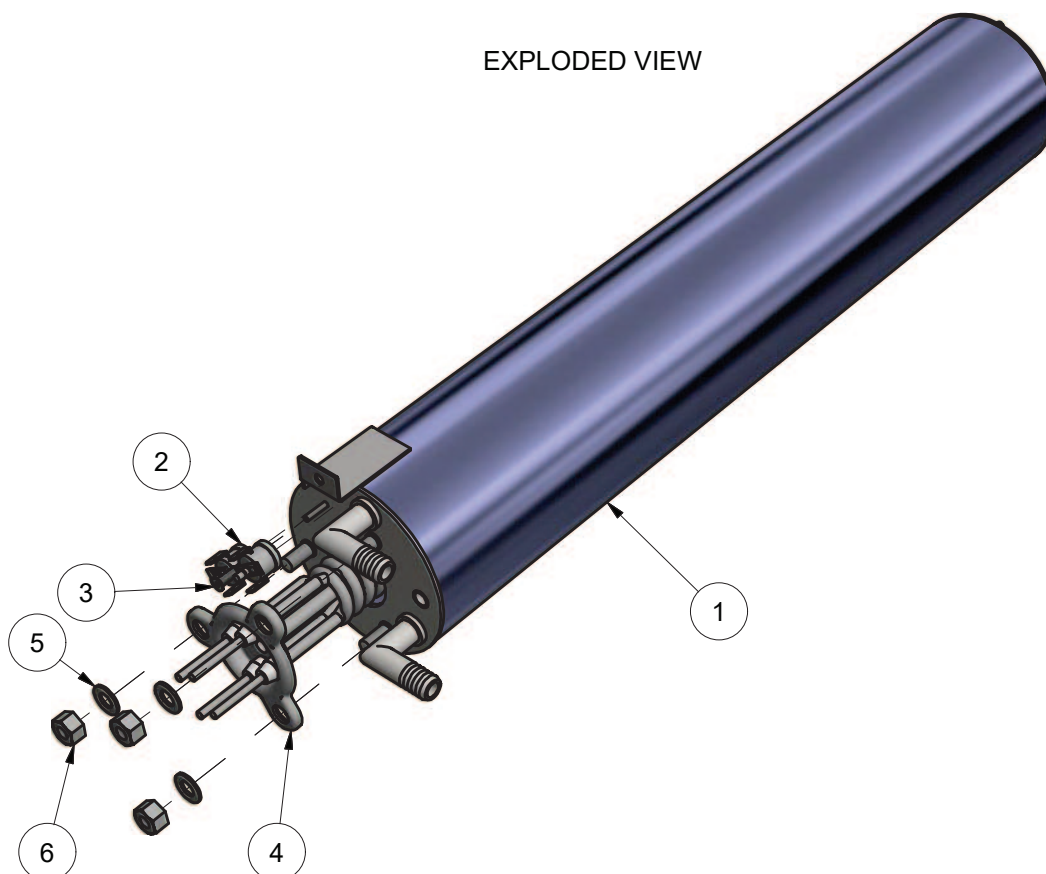
303 10028 5/08/2020 3-B



PARTS LIST			
ITEM	PART NUMBER	DESCRIPTION	QTY
1	600 80064	STANDOFF M3 x 12	1
2	303 10017	XP3/XL2 RINSE TANK SS SUB ASSEMBLY 538MM	1
3	600 30088	TSTAT TY60/R-110C [WITH E BKT]	1
4	600 30497	ELEMENT RINSE DOUBLE 5kW	1

XP-3(S)/XL2 RINSE TANK SS ASSEMBLY

303 10028 18/04/2017 REV 3-A

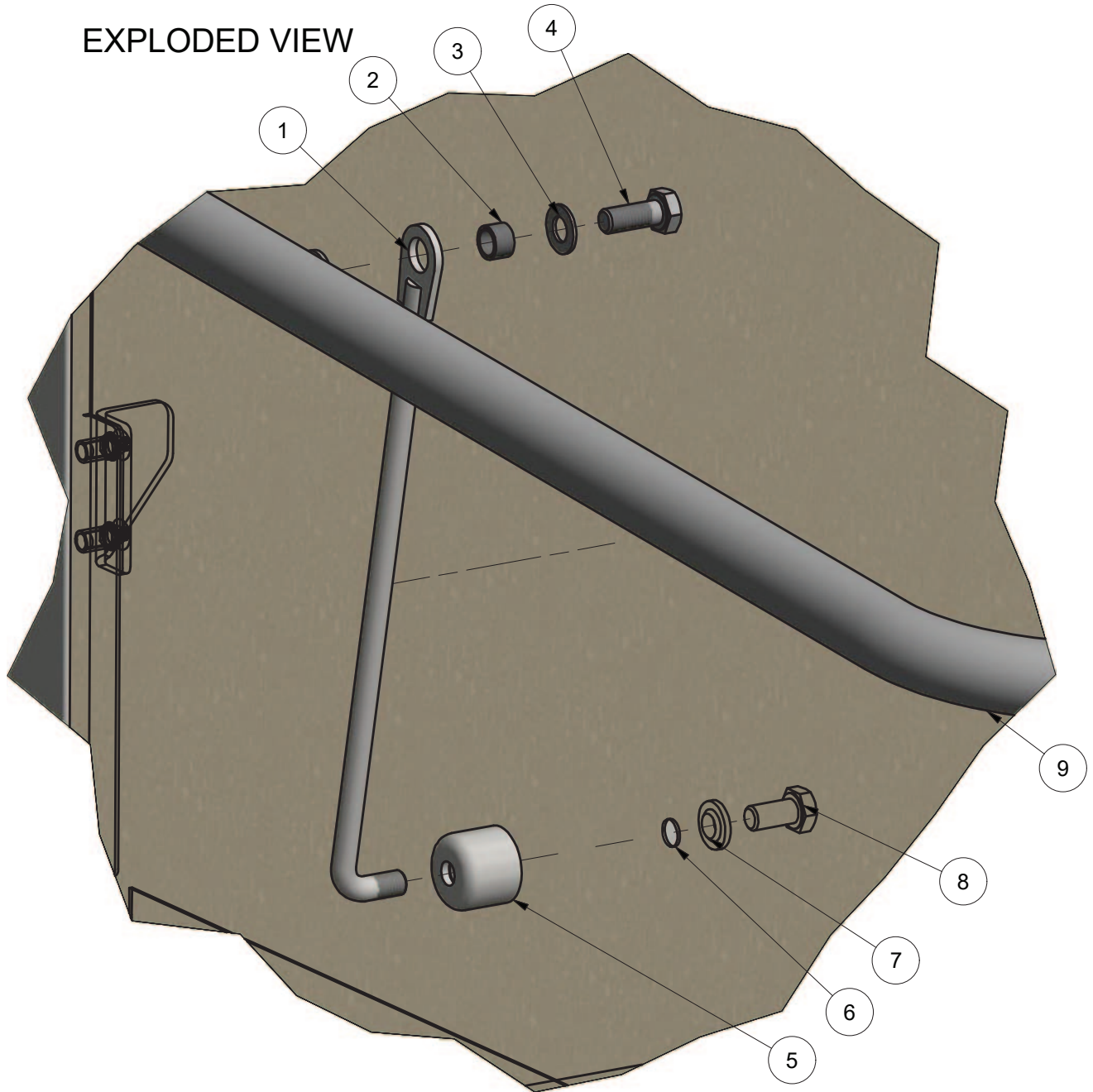


Parts List			
ITEM	PART NUMBER	DESCRIPTION	QTY
1	303 10017	XP3/XL2 RINSE TANK SS SUB ASSEMBLY 538MM	1
2	600 30088	TSTAT TY60/R-110C [WITH E BKT]	2
3	600 80064	STANDOFF M3 x 12	1
4	600 30497	ELEMENT RINSE DOUBLE 5kW	1
5	600 80022	WASHER FL SS 304 M8x16x1.2mm	3
6	600 80063	NUT NYLOC SS M8	3

XL2 DOOR LINK ASSY

351 14001 11/08/2017 REV 1-A

EXPLODED VIEW

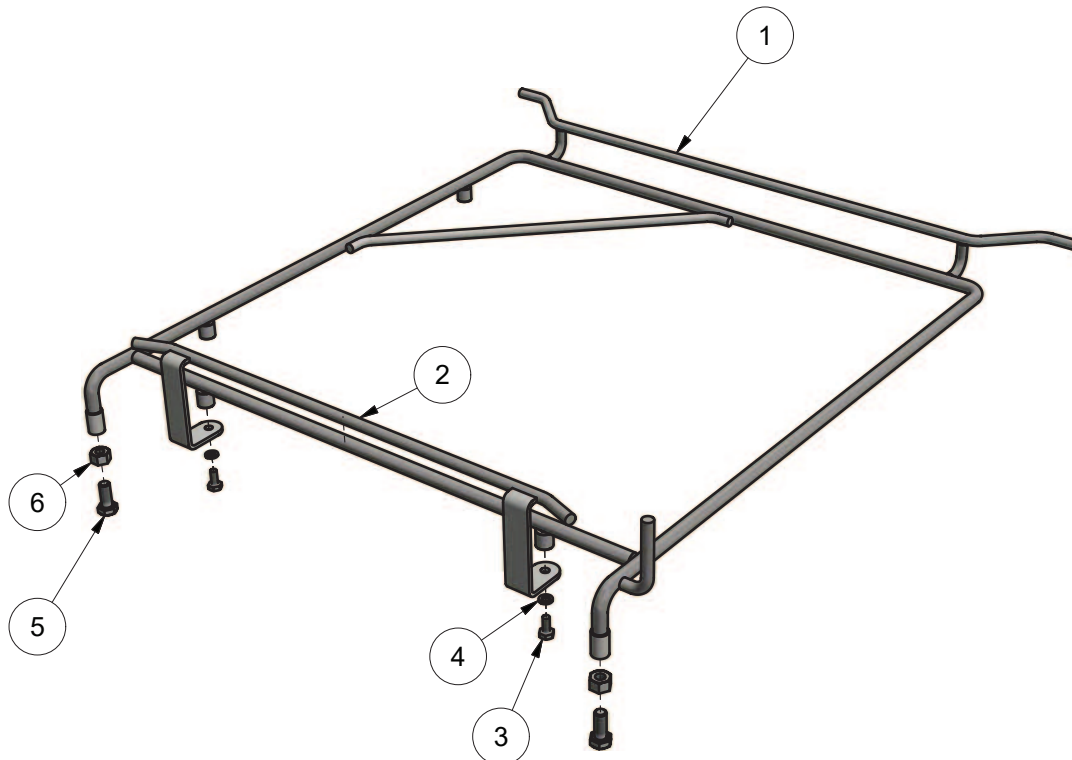


Parts List			
ITEM	PART NUMBER	DESCRIPTION	QTY
1	400 10206	PASSTHROUGH DOOR STAY ASSY	2
2	1658	SPACER	2
3	600 80022	WASHER FL SS 304 M8x16x1.2mm	2
4	600 80030	M8x20 HEX HD SET SCREW T304	2
5	400 30225	PASSTHROUGH DOOR STAY MOUNT	2
6	351 14035	XL2 PASSTHRU DOOR ASSY	1
7	600 80158	8mm TYPE A SEALING WASHER	2
8	600 80029	M8x12 HEX HD SET SCREW T304	6
9	351 14037	XL2 DOOR HANDLE ASSY	1

XL RACKSLIDE ASSEMBLY

351 10082 1/06/2017 REV 3-A

EXPLODED VIEW

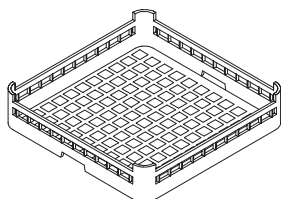


Parts List			
ITEM	PART NUMBER	DESCRIPTION	QTY
1	351 10081	XL RACKSLIDE ASSEMBLY	1
2	328 10008	RACK GUIDE ROD ASSEMBLY	1
3	600 80135	M5 x 12 SS HEX HD SET SCREW	2
4	8567	WASHER SPRING SS 304 M5	2
5	600 80030	M8x20 HEX HD SET SCREW T304	2
6	600 80063	NUT NYLOC SS M8	2

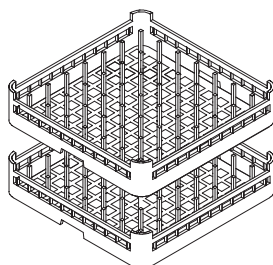
Accessories

XL2 ACCESSORIES

XL2 AC 11/08/17 1A



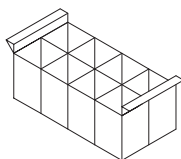
600 70029
CUPRACK 500mm OPEN



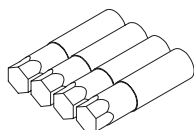
600 70028
DISHRACK 500mm 9 x 9 DIVISION



C660503
CUTLERY CONTAINER G



C660508
CUTLERY BASKET CP8 for 500mm



600 90154
SS LEG (63D x 225-325mm x M12)

Information supplied in this manual is copyright.
No part of this work may be reproduced or copied
in any form or by any means, electronic or
mechanical without the express permission of the
author/publisher

Distributed in Australia by Moffat Pty Limited



740 Springvale Road
Mulgrave 3170
Victoria
Australia



SPARES
WEBSTORE

spares.moffat.com.au



1300 263 107



sparesinfo@moffat.com.au

ISO9001

All Washtech products are designed and
manufactured by Washtech using the
internationally recognised ISO9001 quality
management system, covering design,
manufacture and final inspection, ensuring
consistent high quality at all times.

In line with policy to continually develop and
improve its products, Washtech Ltd reserves the
right to change specifications and design without
prior notice.

an Ali Group Company



The Spirit of Excellence