

**XL**

Series 1

PASSTHROUGH DISHWASHER



# Parts Manual

# Spare Parts XL

---

## DESCRIPTION

## PART NO

### Cabinet & Door

Control Panel Sub-Assembly	326 10008
Control Panel Label	400 70079
Door Assembly	351 11035
Door Switch Magnet	600 30182
Spring Door 27 x 735 x 5	326 30019

### Controls & Indicators

Contactor	600 30337
Door Reed Switch	600 30183
Knob 4 Position	30415
Power Light	600 30161
Pressure Switch	600 30308
Relay 2 pole 240V	600 30080
Relay Base	600 30081
Ready Light	600 30162
Run Light	600 30163
Switch 4 Position	600 30269
Temperature Gauge	600 90080
Terminal Strip 12 Way	3229
Test Switch	3035
Timer 40/60/90 sec	32782

### Heating Components

Over Temperature Thermostat	600 30088
Rinse Element 5 KW	3005
Rinse Tank Assembly	400 10122
Rinse Thermostat	3020
Wash Element 2.5 KW	600 30159
Wash Thermostat	30201

### Hoses & Fittings

Lower & Upper Wash Connection Hose	6195
Pressure Switch Hose (specify length)	3067
Rinse Hose (specify length)	600 60073
Rinse Tee SS	400 90076
Upper Wash Hose (640 mm long)	6194
Wash Pump Inlet Hose (75 mm long)	61942
Wash Pump Outlet Hose (140 mm long)	61941

# Spare Parts XL

---

DESCRIPTION	PART NO
<b>Pumps &amp; Valves</b>	
Detergent Pump	600 30094
Detergent Squeeze Tube	600 30134
Dual Check Valve	600 60108
Rinse Aid Injector	600 30324
Solenoid Valve Assembly	400 10121
Solenoid Valve	600 30403
Strainer Line 1/2	6950
Wash Pump	3906
<b>Wash Tank Components</b>	
Drain Upstand	400 10145
Locknut Wash Arm	280409C
Pressure Bell	400 90135
Rack Slide Assembly	351 10081
Rinse Arm Assembly	260 10097
Rinse Arm Bush	C190624
Rinse Arm Cap Screw	261004C
Rinse Arm End Plug	400 30200
Rinse Arm Jet	400 30087
Rinse Arm Spring Retainer Screw	C450218
Scrap Tray	351 12003
Slip Ring AL(3) Black Acetal	400 30191
Temperature Gauge Probe Clamp	400 20066
Wash Arm Assembly	400 10077
Wash Arm Bush	190621C
Wash Arm End Plug	400 30101
Wash Arm End Screw	600 80072
Wash Pump Inlet Filter	351 11026
Wash Spindle AL	400 30014 [to SN145566] 400 30362 [from SN145567]

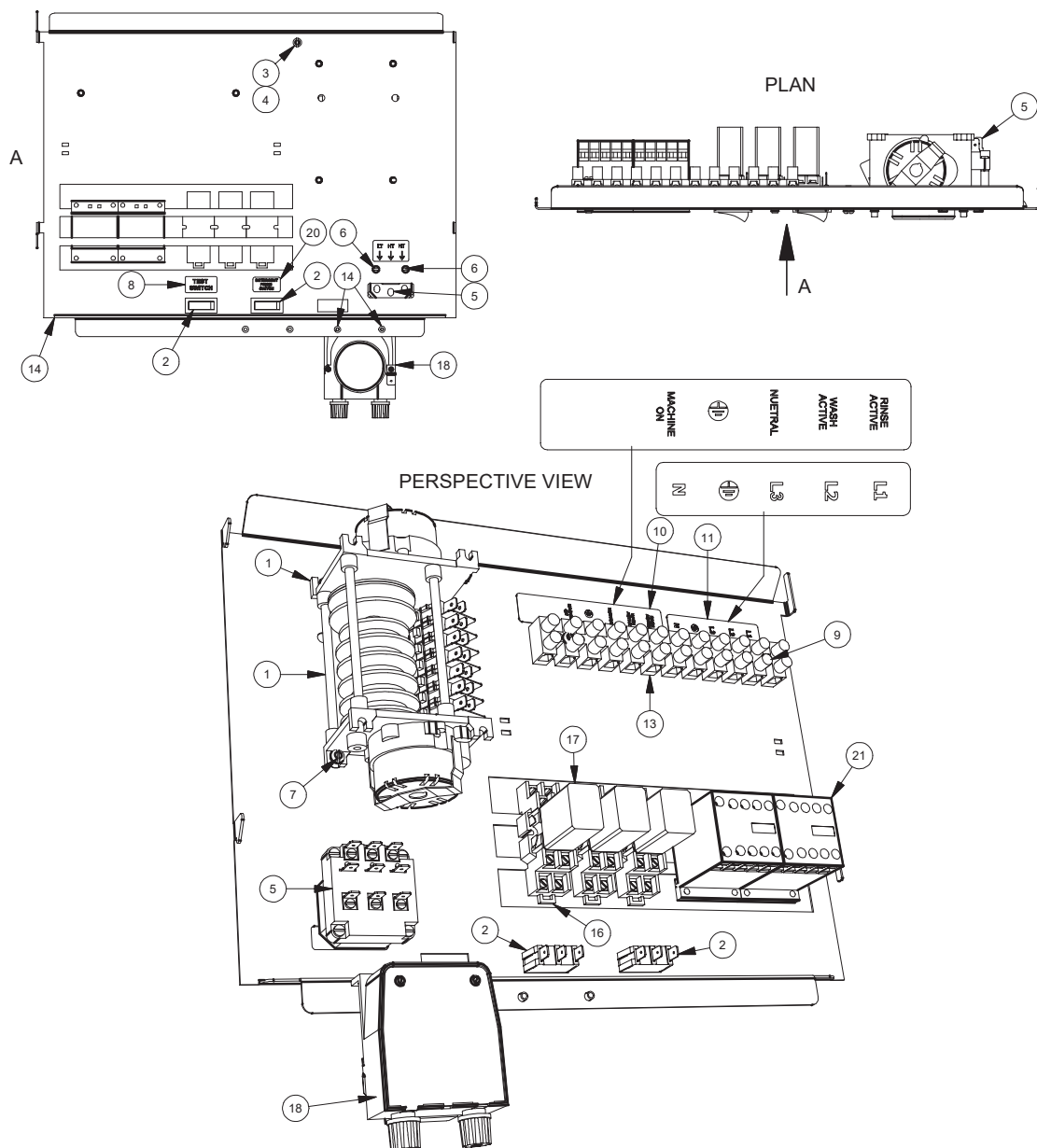
**Note:**

For more parts look in the section “Assembly Diagrams”.

# Assembly Diagrams

## XL(W) WIRING TRAY ASSY

351 10120 10/03/2016 REV 1-A



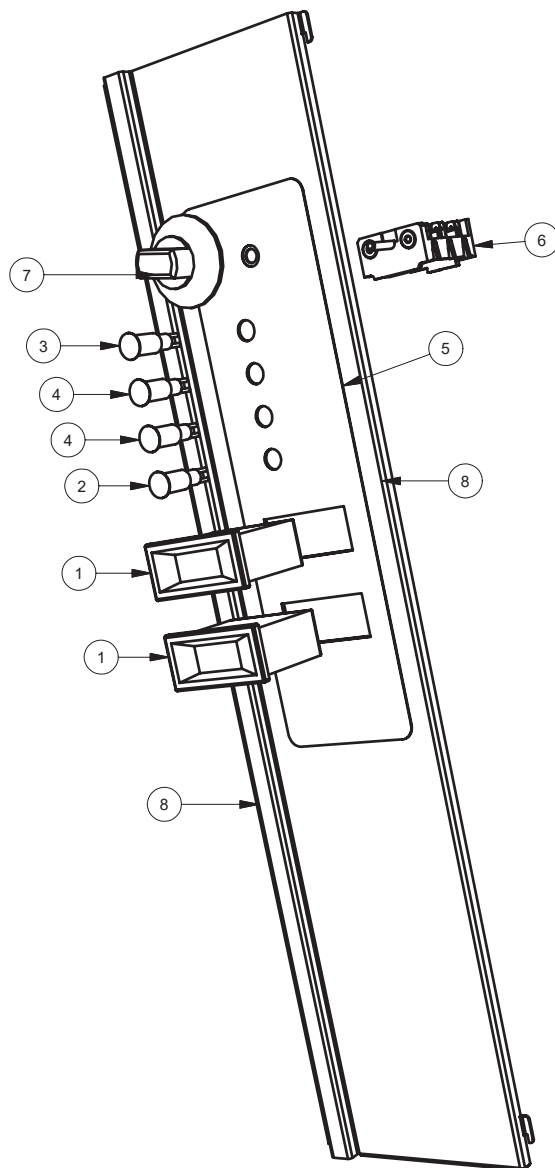
Parts List			
ITE	PART NUMBER	DESCRIPTION	QTY
1	32782	TIMER4907DV (40, 60, 90 SEC) 3 CYCLE	1
2	3035	SWITCH SINGLE POLE BIASED BLACK	2
3	8816	MS RH BRASS 3/16 X 3/4	1
4	8151	NUT HX BRASS 3/16" PRESSED	1
5	3020	3 POLE THERMOSTAT	1
6	8800	MS PAN POZI ZP M4x6	2
7	8801	MS PAN POZI ZP M4x12	4
8	REF	LABEL TEST SWITCH	1
9	8802	MS PAN POZI ZP M4x25	2
10	REF	CHEMICAL CONNECTIONS LABEL	1
21	600 30337	CONTACTOR 20A 3NO/NC 230-240V	2

Parts List			
ITEM	PART NUMBER	DESCRIPTION	QTY
11	REF	POWER CONNECTIONS LABEL	1
12	REF	LABEL THERMOSTAT ADJUSTMENTS	1
13	3229	TERMINAL STRIP 12 WAY	1
14	351 10216	AL(3) WIRING TRAY SUB ASSEMBLY	1
16	600 30081	BASE 2 POLE RELAY	3
17	600 30080	RELAY 2 POLE (240VAC)	3
18	600 30094	PERI PUMP 1.5L/H SEKO-KIT	1
19	@600 30094	MS RH ZP M3x30	2
20	REF	LABEL DETERGENT PRIME SWITCH	1
21	600 30337	CONTACTOR 20A 3NO/NC 230-240V	2

# AL/AL8/M2/PW3 CONTROL PANEL ASSY

400 10123 24/01/2008 REV 3-B

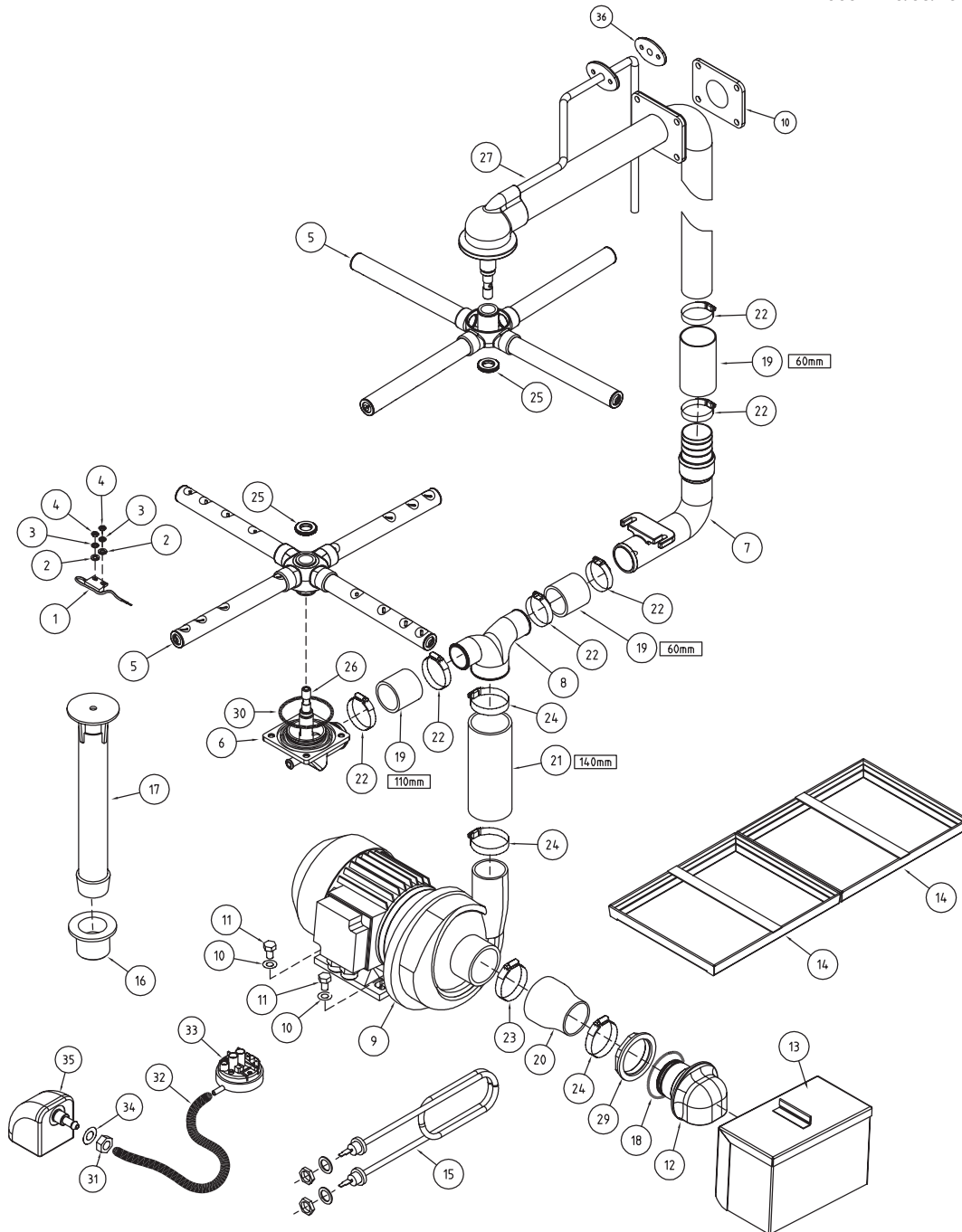
## EXPLODED PERSPECTIVE



Parts List			
ITEM	PART NUMBER	DESCRIPTION	QTY
1	600 90080	TEMP GAUGE RECTANGULAR 58x25	2
2	600 30161	LENS & NEON ASSY (RED) 12mm	1
3	600 30163	LENS & NEON ASSY (GREEN) 12mm	1
4	600 30162	LENS & NEON ASSY (AMBER) 12mm	2
5	400 70079	M2 - AL CONTROL LABEL	1
6	600 30269	SWITCH 4 WAY QUICK CONNECT	1
7	30415	KNOB 4 POSITION	1
8	400 10140	M2 THROUGH TO PW3 CONTROL PANEL SUB-ASSY	1

# XL WASH SYSTEM

XL 0002 10/03/16 1A



ITEM	CODE	DESCRIPTION	QTY	ITEM	CODE	DESCRIPTION	QTY
1	600 30183	REED SWITCH STEM	1	20	400 90153	HOSE 2HP WASH PUMP INLET	1
2	600 80081	M4 WASHER 304	2	21	61941	HOSE 50mm 2 PLY RADIATOR	0.14M
3	8567	WASHER SPRING SS 304 MS	2	22	ASS24	HOSECLIP ASS24	6
4	8112	NUT HEX SS 304 M4	2	23	ASS44	HOSECLIP ASS44	1
5	400 10077	AL/ALB WASH ARM ASSY	2	24	ASS36	HOSECLIP ASS36	3
6	400 90140	AL LOWER WASH TEE	1	25	280409C	LOCKNUT M18	2
7	351 10026	AL(3) LOWER WASH ELBOW ASSY	1	26	400 30014	SPINDLE AL WASH [to SN145566]	2
8	400 90126	53mm x 38mm REDUCER TEE	1	27	351 10016	AL3 WASH PIPE ASSEMBLY	1
9	3906	PUMP WASH AL 2HP 3PH	1	28	400 30191	AL(3) BLACK ACETAL SLIP RING	1
10	400 90095	WASH MANIFOLD GASKET	1	29	6039	50mm BACKNUT	1
11	600 80029	MS HX SS 304 M8x12	2	30	ARP336	ARP336 O-RING	1
12	400 90139	2" AL WASH PUMP COLLECTOR	1	31	600 80009	NUT SS 304 HEX M10	1
13	351 11026	AL INLET FILTER ASSY	1	32	3067	HOSE PRESSURE SW VACUUM 4mm	1
14	351 12003	ASSEMBLY SCRAP TRAY AL(3)/PW1	2	33	600 30308	PRESSURE SWITCH METAFLEX 140/60mm	1
15	600 30159	ELEMENT 2500W STRAIGHT ELEMENT	1	34	ARP205	O RING 205	1
16	400 30042	WASTE DRAIN PLASTIC 40mm PLASTIC	1	35	400 90135	SQUARE PRESSURE BELL CASTING	1
17	400 10145	305mm LONG UPSTAND "M"	1	36	400 90096	RINSE DISTRIBUTION GASKET	1
18	ARP333	O-RING	1				
19	6195	HOSE 38mm 2 PLY RADIATOR	0.23M				

400 30362 from SN145567

# Wash Pump

## Part Number

3906

## Function

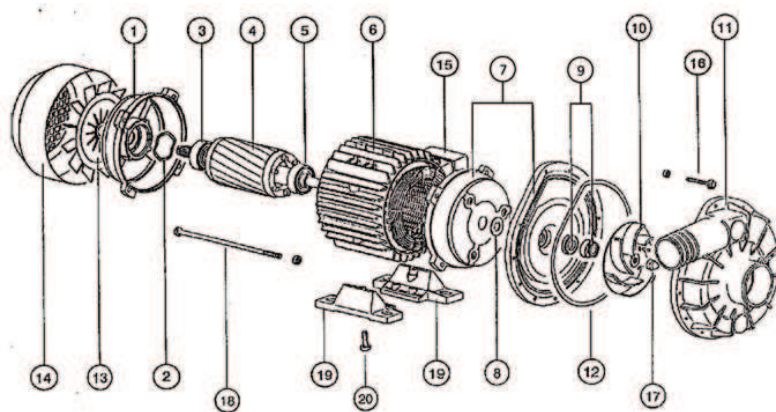
Pumps water from the wash tank to the wash arms providing a recirculating wash cycle.

## Description

Electric Pump FIR

Power:	HP 2 Kw 1.4	Speed:	2800 rpm
Voltage:	415 V	Amperes:	3.1 A
Frequency:	50 Hz	Construction:	IP44

## Diagram



ITEM	DESCRIPTION	FIR CODE	WASHTECH CODE
1	Pump Complete 2HP Housing	1204	3906
2	Compensation Ring	LMKAS 40	-
3	Ball Bearing	6203-2Z	6203
4	Rotor	-	-
5	Ball Bearing	6203-2Z	6203
6	Stator	-	-
7	Pump Support	1204320	C630223
8	Water Protect.Ring	1200316	-
9	Seal	12-24-14/13-26-8	C630501
10	Impeller	1204315	C631618
11	Volute	1204303	C630114
12	Gasket	1200317	C630411
13	Fan	141404213	C630306
14	Fan Protection	1414041	C630216
15	Terminal Box Cover	1486090	-
16	Pump Housing Screw	TE M4x25	-
17	Impeller Nut	M8 Autobloc.INOX	-
18	Tie Rod	TE M5x138	-
19	Foot	1484001	-
20	Foot Screw	-	-

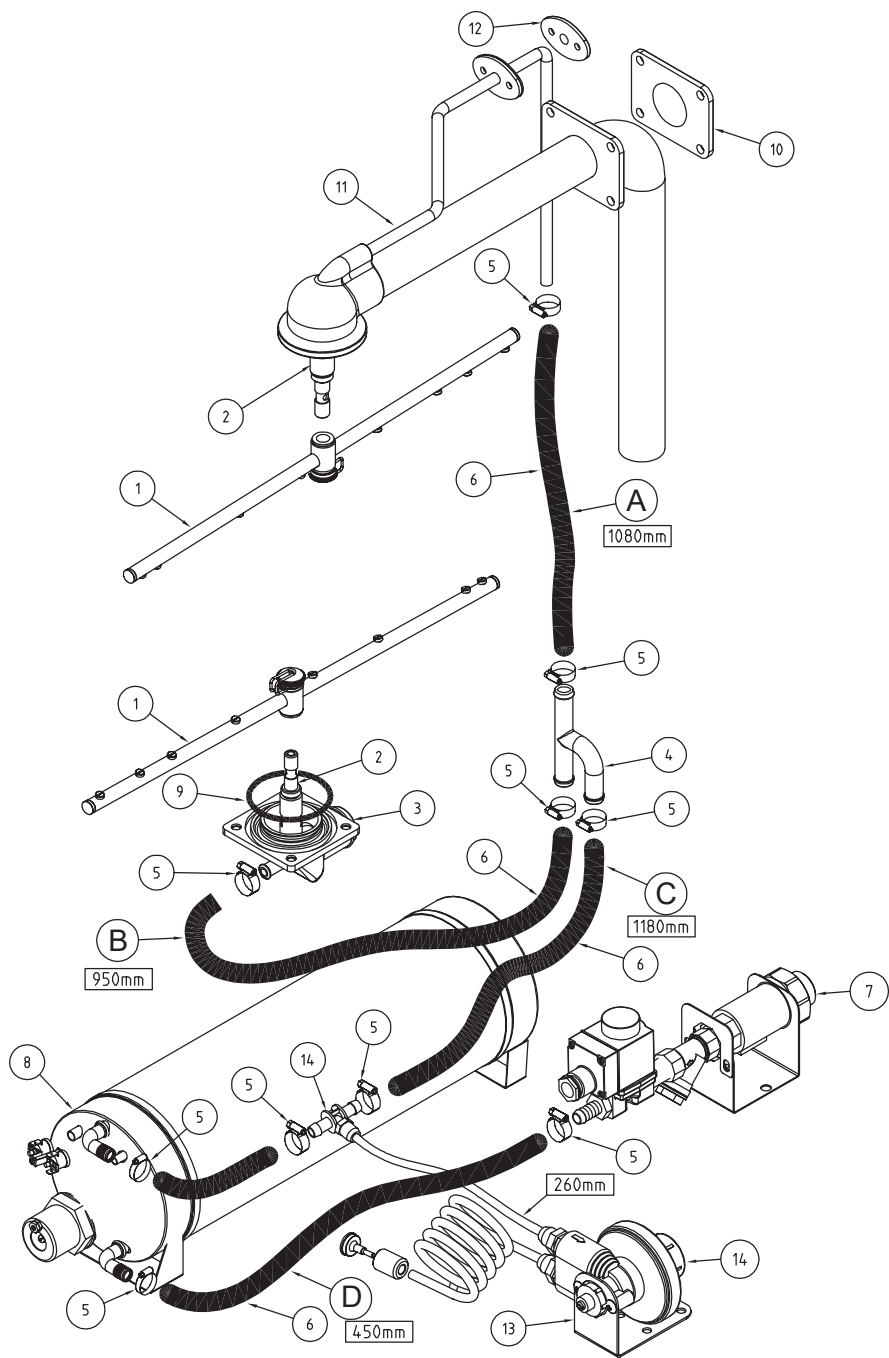
## Replacement

Drain the wash tank and switch off the power.  
 Disconnect the wires from the wiring connectors inside the pump junction box.  
 Remove two M8 bolts that fasten the pump to the platform.  
 Release the hose clamps on the inlet and outlet pump hoses and remove the pump.  
 Replace in reverse order.



# XL RINSE SYSTEM

XL 0001 9/03/16 1A



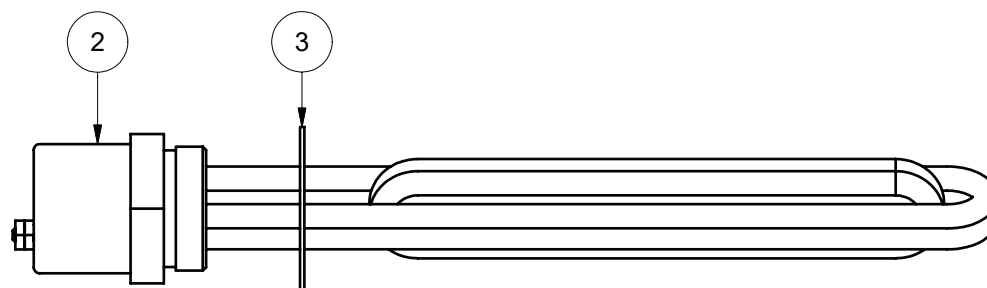
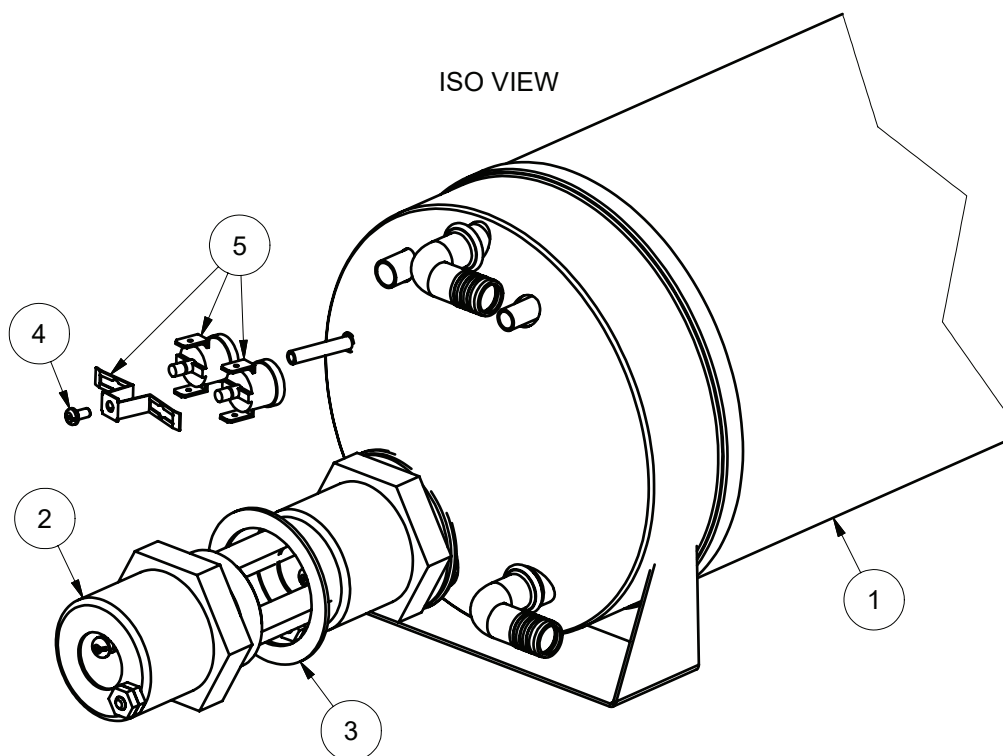
ITEM	CODE	DESCRIPTION	QTY
1	815 10013	AL/AL8/PW1 RINSE ARM ASSY	2
2	400 30014	SPINDLE AL WASH [to SN 145566]	2
3	400 90140	AL LOWER WASH TEE	1
4	400 90076	SS RINSE TEE	1
5	ASS06	HOSECLIP ASS06	10
6	600 60073	HOTOTAL HOSE 11mm x 19mm	3.66m
7	400 10121	ASSY RINSE SOLENOID M2/AL/PW1/PW2	1
8	400 10122	ASSY RINSE TANK	1
9	ARP336	O-RING	1
10	400 90095	WASH MANIFOLD GASKET	1
11	351 10016	AL3 WASH PIPE ASSEMBLY	1
12	400 90096	RINSE DISTRIBUTION GASKET	1
13	400 20176	RINSE AID INJECTOR BRACKET	1
14	600 30324	RINSE AID INJECTOR KIT	1

400 30362 from SN145567



# ASSY RINSE TANK 1/2" AL/PW1

400 10122 7/07/2008 REV 1-B

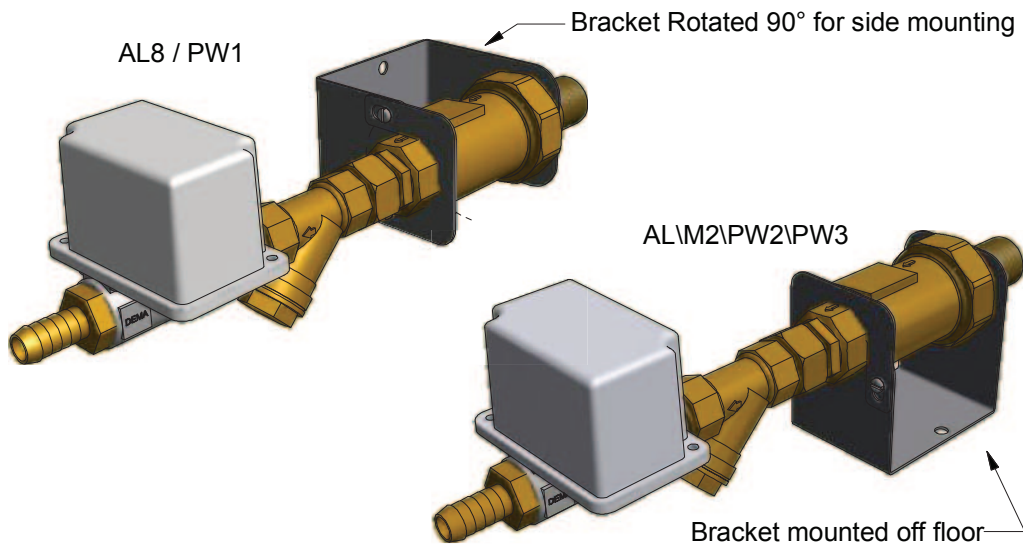


NOTE:  
USE GRAPHITE JOINING COMPOUND ON BOTH SIDES  
OF GASKET BEFORE INSERTING ONTO ELEMENT.

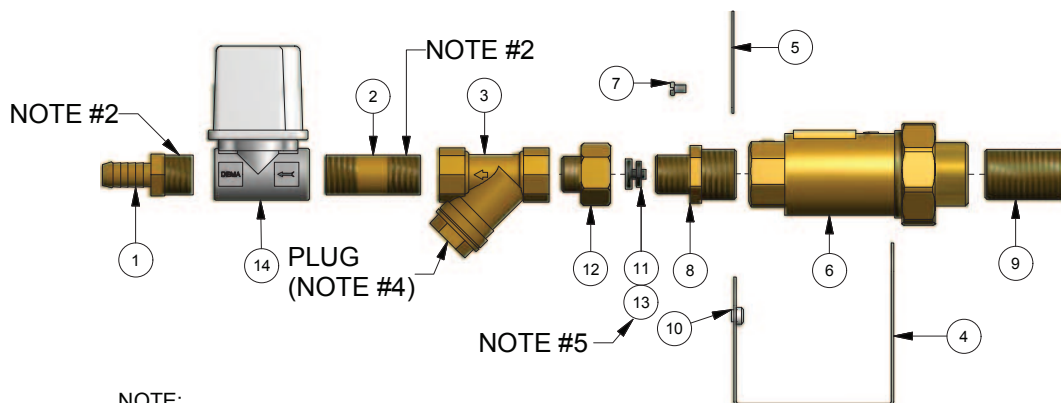
Parts List			
ITEM	PART NUMBER	DESCRIPTION	QTY
1	400 10130	AL(3) RINSE TANK SUB ASSY	1
2	3005	5KW RINSE ELEMENT	1
3	3006	ELEMENT GASKET	1
4	600 80052	MS RH ZP M3x6	1
5	600 30088	TSTAT TY60/R-110C [WITH E BKT]	2

# ASSY RINSE SOLENOID AL8/AL/PW(W)

400 10121 25/07/2012 REV 3-H



## EXPLODED PERSPECTIVE VIEW



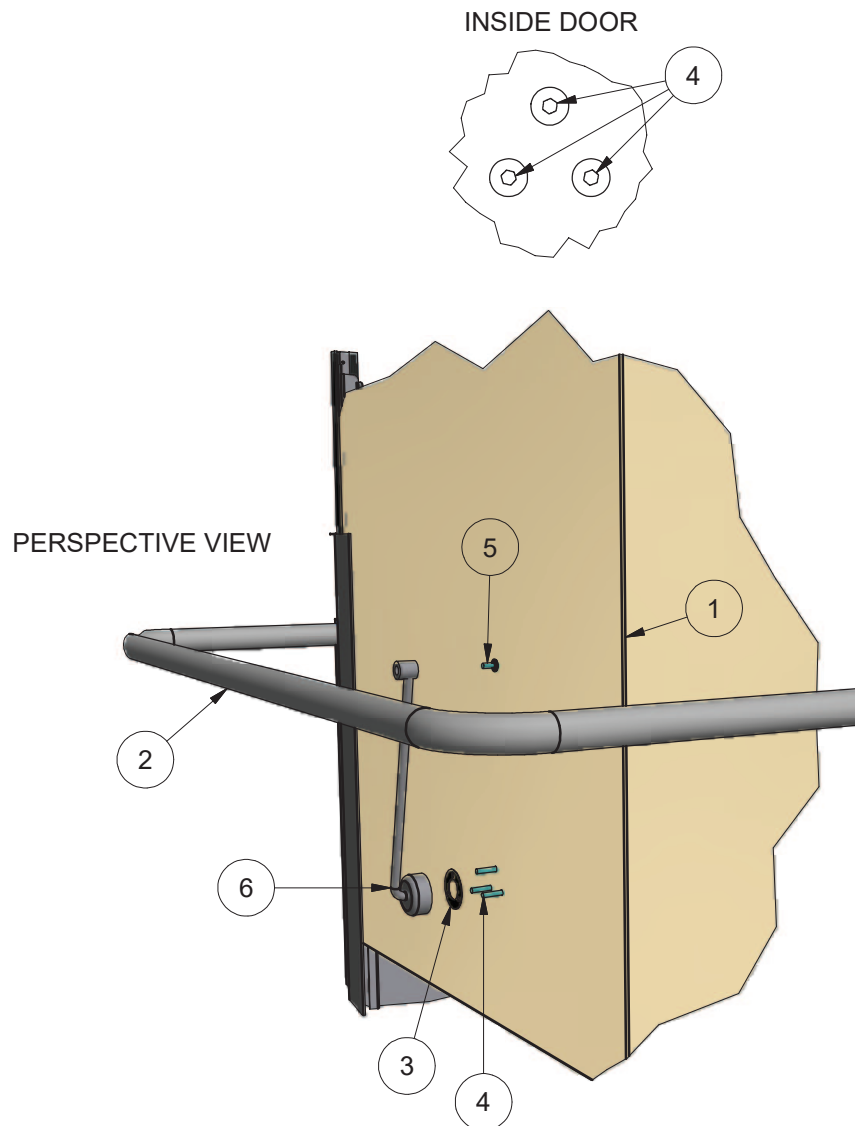
### NOTE:

1. USE LOCTITE 262 ON THIS THREAD
2. USE A131 PERMABOND ON ALL JOINTS
3. ENSURE SOLENOID, LINE STRAINER AND DCV FLOW DIRECTIONS ARE AS SHOWN
4. ANGLE LINE STRAINER PLUG 45 DEGREE FORWARD TO ALLOW REMOVAL.
5. USE 16L/MIN FLOW RESTRICTOR ON PW2 AND PW3 ONLY.

Parts List			
ITEM	PART NUMBER	DESCRIPTION	QTY
1	6153	TAILPIECE 1/2"x1/2" BSP	1
2	600 60003	NIPPLE 15mm x 50mm BRASS BARREL	1
3	6950	STRAINER LINE 1/2	1
4	400 20107	DCV BOTTOM BRACKET	1
5	400 20108	DCV TOP BRACKET	1
6	600 60108	DUAL CHECK VALVE	1
7	8800	MS PAN POZI ZP M4x6	2
8	6041	NIPPLE HEX REDUCING 20x15mm	1
9	600 60111	3/4" x 3/4" BRASS NIPPLE FOR DCV	1
10	8225	HANK BUSH 304 SS M4	2
11	600 30309	FLOW RESTRICTOR 12L/MIN	1
12	6053	CROX SOCKET	1
13	600 30325	FLOW RESTRICTOR 16L/MIN	1
14	600 30403	SOLENOID VALVE w COVER	1

# XL DOOR LINK ASSY

351 10110 10/03/2016 REV 1-A



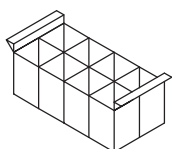
NOTE: APPLY LOCTITE GRADE 243 TO ALL FASTENERS BEFORE ASSEMBLY

Parts List			
ITEM	PART NUMBER	DESCRIPTION	QTY
1	351 10007	AL(3) PASSTHRU INSULATED DOOR ASSY	1
2	351 10037	ASSY AL(3) DOOR HANDLE	1
3	400 90120	PASSTHROUGH DOOR MOUNT GASKET	1
4	600 80092	25 x M5 x RND HD POZI SCREW	3
5	600 80091	M5 x 12 SS BUTTON HD CAP	1
6	326 10016	M2(3) DOOR STAY ASSY	1

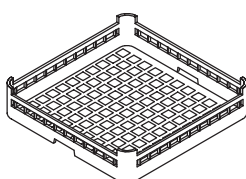
# Accessories

## XL ACCESSORIES

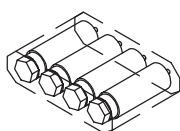
XL ACS 10/03/16 1A



**C660508**  
**CUTLERY BASKET CP8 for 500mm**

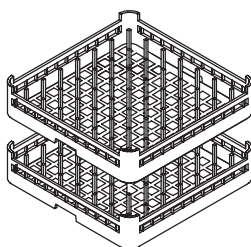


**600 70029**  
**CUPRACK CB 500mm X 75mm high**

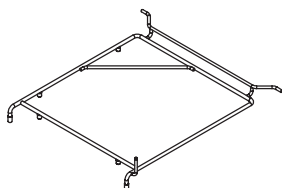


**600 90023**  
**ASSY SL/M1/M2/ LEG 50x240xM12**

**7026@**  
**BAG MINIGRIP 230 x 305 x 70mu**



**600 70028**  
**DISHRACK P12/18 500mm 18 DISH**



**351 10081**  
**RACK SLIDE ASSEMBLY**



**TIMER ADJUSTMENT TOOL**

Information supplied in this manual is copyright. No part of this work may be reproduced or copied in any form or by any means, electronic or mechanical without the express permission of the author / publisher.



Distributed In  
Australia by

740 Springvale Road, Mulgrave 3170, Victoria

