

XP

Parts Manual



WASHTECH®
PROFESSIONAL WASH SYSTEMS

Spare Parts

DESCRIPTION

PART NO

Cabinet & Door

• Control Panel Sub-Assembly	302 10008
• Control Panel Label	400 70189
• Front Panel	303 20030
• Lower Rear Panel	303 20040
• Door	303 10007
• Door Handle	303 10037
• Door Springs	326 30019

Controls & Indicator

• Contactor	600 30337
• Door Reed Switch	600 30183
• Knob 4 Position	600 30524
• Power Light	600 30529
• Pressure Switch	600 30479
• Cycle Light	600 30528
• Switch 4 Position	600 30269
• Temperature Gauge	600 30546
• Temperature Gauge Sensor 1.8m	600 30604
• Terminal Strip 5 Way	3229
• Power Relay	600 30223
• Timer Electronic	600 30513

Heating Components

• Over Temperature Thermostat	600 30088
• Rinse Element 6 kW	600 30496
• Rinse Tank Assembly	303 10029
• Rinse Thermostat	30201
• Wash Element 2.5 kW	600 30226
• Wash Thermostat	30201

Hoses

• Detergent Hose	600 30148
• Pressure Switch Hose	3067
• Rinse Hose	600 60073
• Wash Pump Inlet Hose	6194
• Left Wash Pump Outlet Hose	6195
• Lower Wash Tee Hose	6196
• Drain hose	600 60105

Spare Parts

DESCRIPTION

PART NO

Pumps and Solenoids

• Detergent Pump	600 30526
• Detergent Squeeze Tube	600 30134
• Rinse Aid Pump	600 30480
• AVB	600 60053
• Solenoid Valve	3342
• Wash Pump	600 30299
• Rinse Pump	600 30400
• Drain Pump	600 60102

Wash Tank Components

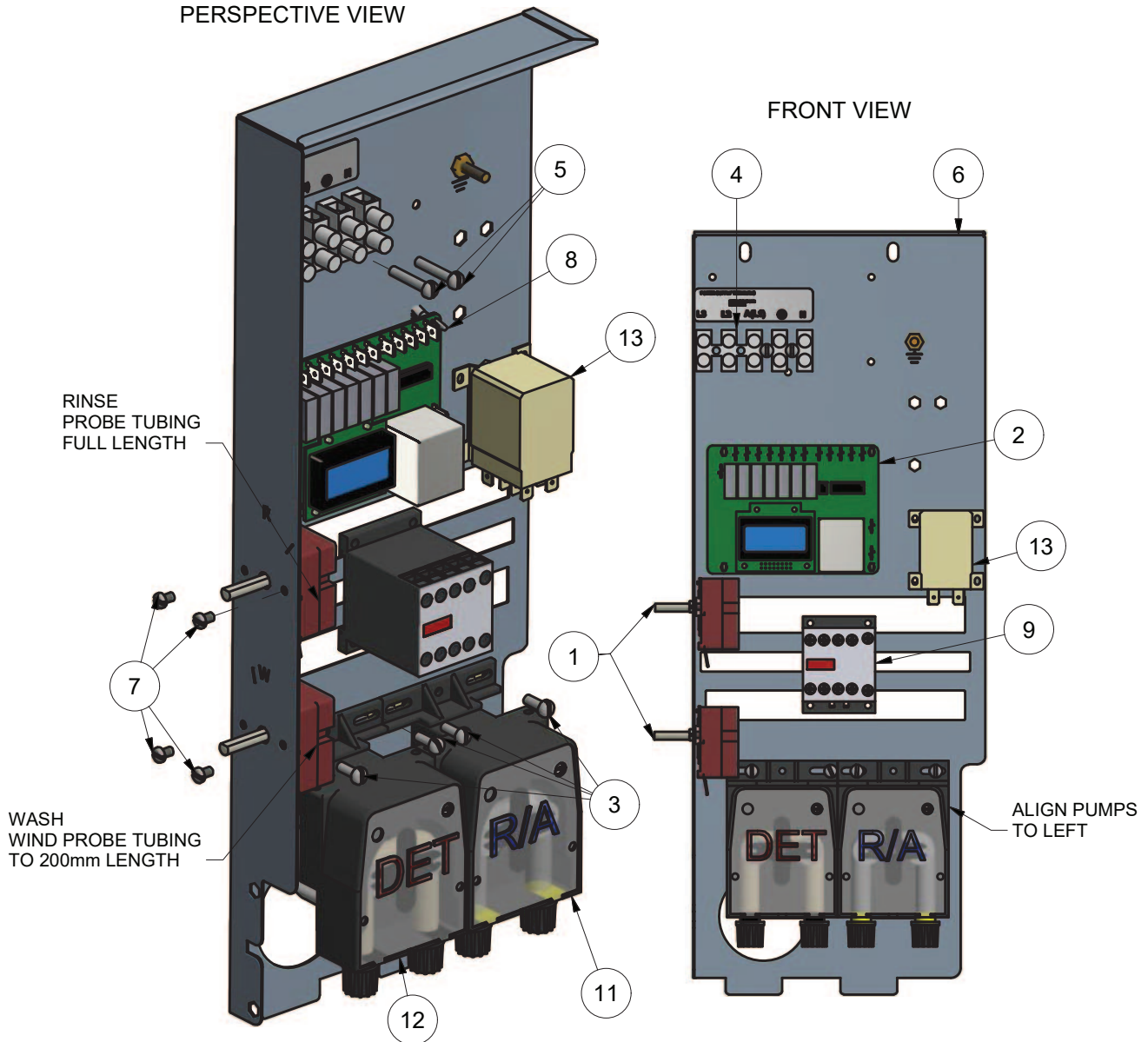
• Drain Upstand	400 10144
• Rack Slide Assembly	328 10026
• Wash & Rinse Arm Assembly	600 41148
• Scrap Tray	329 15002
• Temperature Gauge Pocket	400 10065
• Wash Pump Inlet Filter	326 20010
• Wash & Rinse Spindle	400 30223

XP-3 WIRING TRAY ASSEMBLY

303 10020 3/08/2017 REV 1-B

PERSPECTIVE VIEW

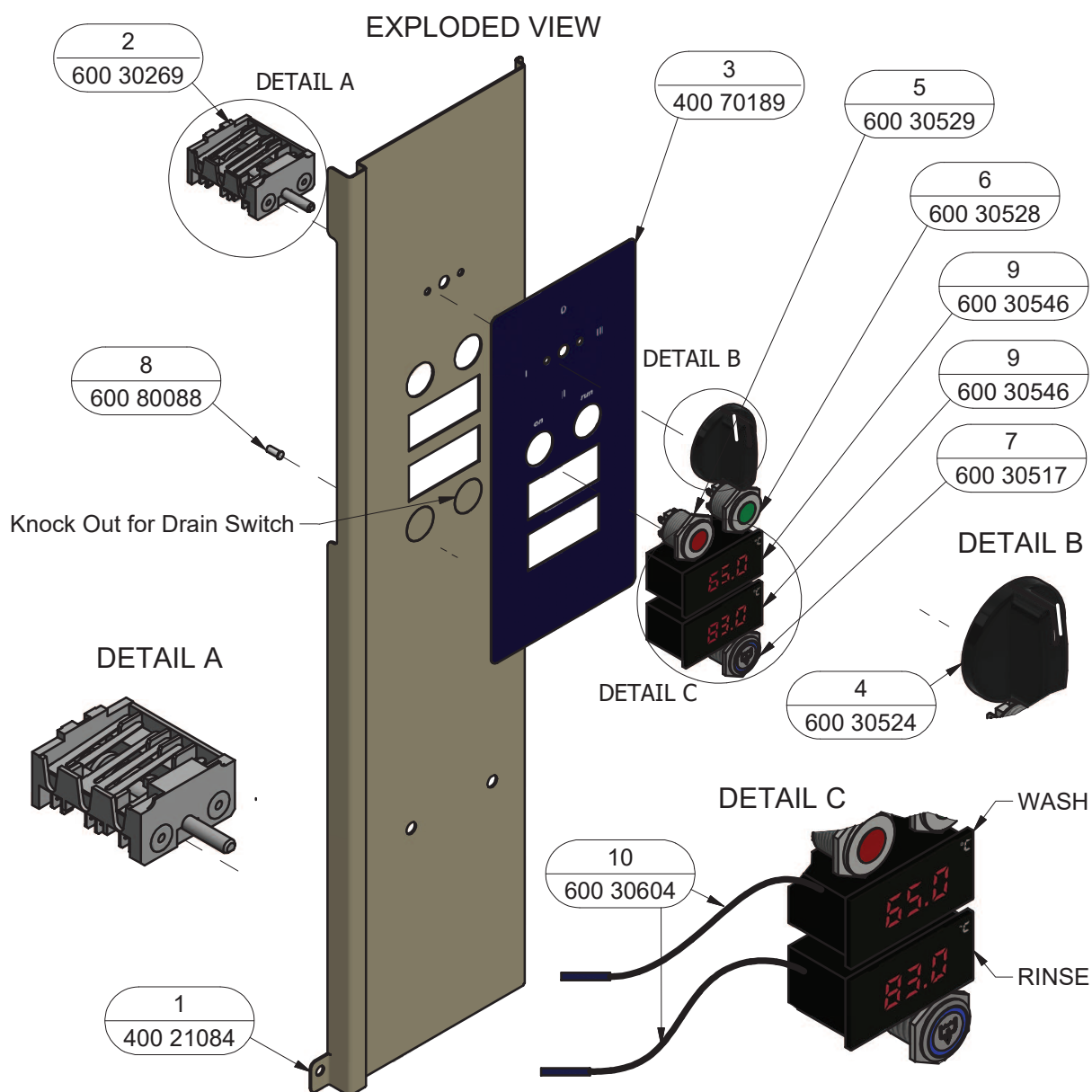
FRONT VIEW



Parts List			
ITEM	PART NUMBER	DESCRIPTION	QTY
1	30201	THERMOSTAT 1 POLE	2
2	600 30513	TIMER ELECTRONIC	1
3	8801	MS PAN POZI ZP M4x12	4
4	3229	TERMINAL STRIP 12 WAY x 0.5	1
5	8802	MS PAN POZI ZP M4x25	2
6	302 10019	X-RANGE WIRING TRAY SUB-ASSEMBLY	1
7	8800	MS PAN POZI ZP M4x6	4
8	600 30527	PCB SUPPORT-END DOME HEAD	4
9	600 30337	CONTACTOR 20A 3NO/NC 230-240V	1
10	LABEL	POWER SUPPLY TERMINAL LABEL	1
11	600 30480	PERISTALTIC RINSE AID PUMP ADJUSTABLE	1
12	600 30526	PERISTALTIC DETERGENT PUMP ADJUSTABLE	1
13	600 30223	JQX-12F POWER RELAY	1

XM/M1(4)/XP(D) CONTROL PANEL ASSY

302 10008 6/12/2019 REV 3-B



Parts List			
ITEM	PART NUMBER	DESCRIPTION	QTY
1	400 21084	M1-4/XP CONTROL PANEL	1
2	600 30269	SWITCH 4 WAY QUICK CONNECT	1
3	400 70189	Label XP/M1 Control Panel	1
4	600 30524	Knob Selector Switch	1
5	600 30529	Light Red 22mm 220VAC LED Stainless Steel	1
6	600 30528	Light Green 22mm 220VAC LED Stainless Steel	1
7	600 30517	Switch Drain 22mm Maintained 2 Poles 220V Blue	1
8	600 80088	M4 X 10 S/S WELD STUD	1
9	600 30546	TEMPERATURE GAUGE AG-903 (MALE TERMINAL)	2
10	600 30604	SENSOR TEMPERATURE 1.8M V3 METAL CAP (FEMALE TERMINAL)	2

DATE	DESCRIPTION	REV
6/12/19	CHANGE TEMP GAUGES & SENSORS	3-B

© Washtech Ltd, January 2021

MOFFAT
www.moffat.com.au



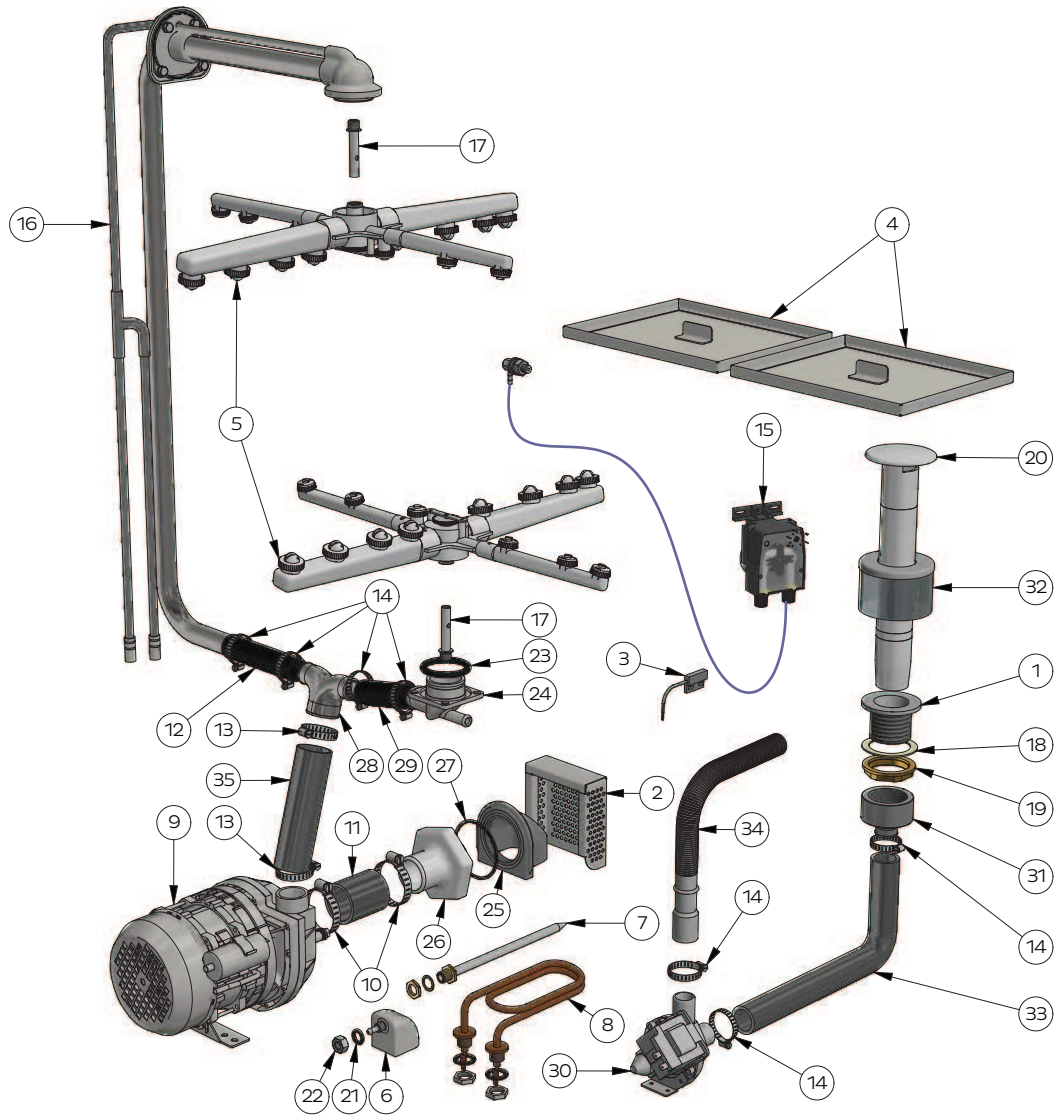
SPARES
WEBSTORE spares.moffat.com.au

1300 263 107

sparesinfo@moffat.com.au

XP-3 cw Drain Pump

XP 30007 15/07/2019 1-A



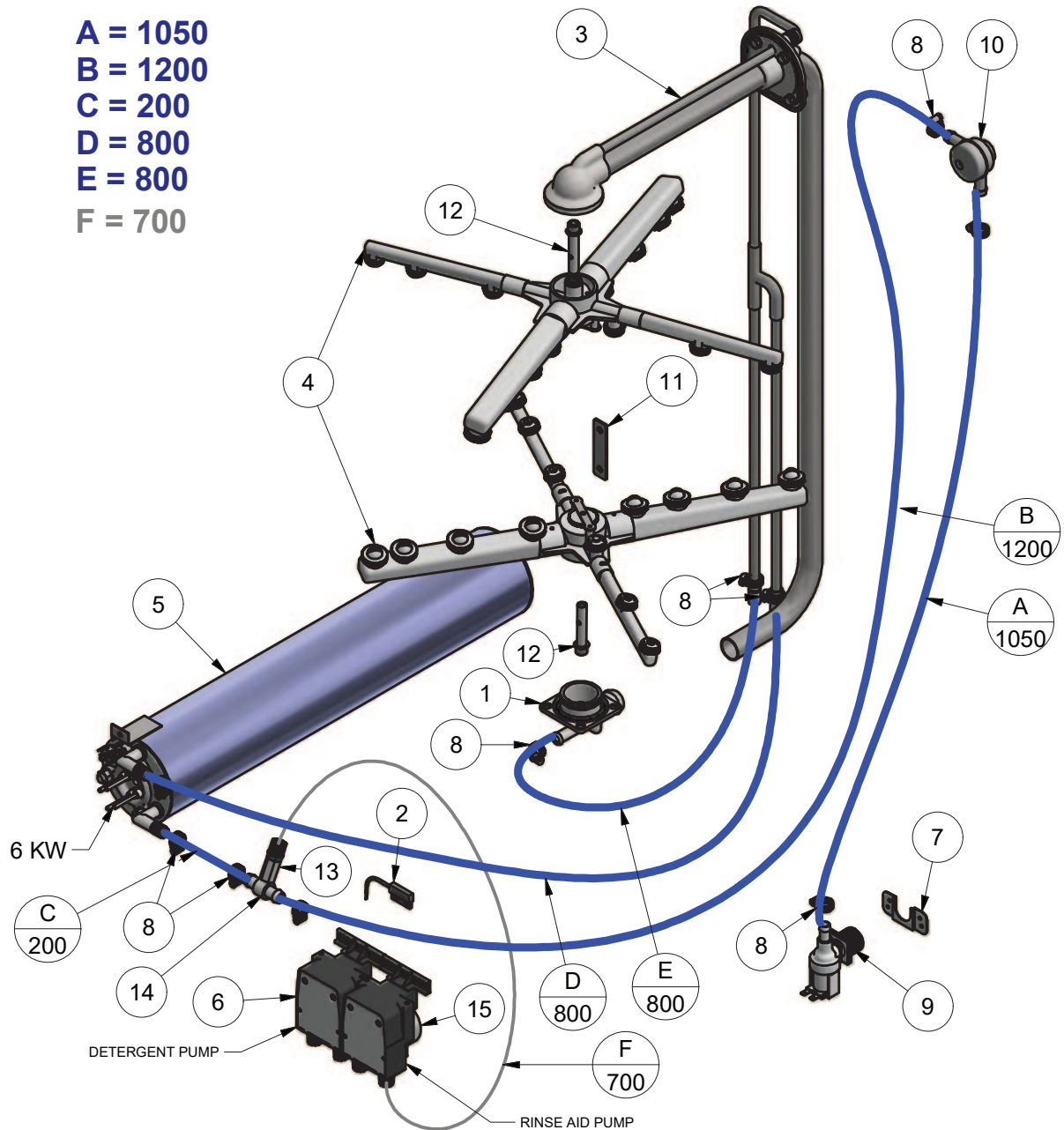
Parts List				Parts List			
ITEM	PART NUMBER	DESCRIPTION	QTY	ITEM	PART NUMBER	DESCRIPTION	QTY
1	400 30042	WASTE DRAIN PLASTIC 40mm PLASTIC	1	19	6037	BACKNUT 126 x 40mm	1
2	326 20010	M2(3) WASH INLET FILTER	1	20	400 10144	UPSTAND "K"	1
3	600 30183	REED SWITCH STEM	1	21	ARP205	O-RING 11IDx18OD	1
4	329 15002	ASSEMBLY SCRAP TRAY XP	2	22	600 80009	M10 SS HX NUT	1
5	600 41148	WASH/RINSE ARM	2	23	ARP328	O-RING 47.35IDx54OD	1
6	400 90135	PRESSURE BELL CASTING	1	24	400 90078	GM/GL WASH TEE	1
7	400 10065	ASSY THERM PROBE POCKET	1	25	400 90178	WASH INLET CASTING	1
8	600 30226	ELEMENT 2500W/240V (THREE LOOP)	1	26	400 90193	PLASTIC WASH PUMP INLET EXTERNAL	1
9	600 30299	WASH PUMP 1HP	1	27	ARP233	O-RING ARP233	1
10	ASS28	HOSE CLAMP ASS28	2	28	400 90069	38mm x 25mm REDUCER TEE	1
11	6194	HOSE 44mm 2 PLY RADIATOR	125 mm	29	6196	HOSE 25mm 2 PLY RADIATOR	75 mm
12	6196	HOSE 25mm 2 PLY RADIATOR	120 mm	30	600 60102	DRAIN PUMP B20-6 220-240V 50Hz	1
13	ASS24	HOSE CLAMP ASS24	2	31	38823	DRAIN PUMP UNION	1
14	ASS16	HOSE CLAMP ASS16	7	32	400 10021	ASSY DRAIN PUMP FILTER	1
15	600 30526	PERISTALTIC DETERGENT PUMP ADJUSTABLE	1	33	400 90012	HOSE GLV & UD UPPER WASH	250 x 120 mm
16	303 10003	XP-4/M2-4&C WASH/RINSE MANIFOLD ASSEMBLY	1	34	600 60105	Hose LHCXP6 Drain	1
17	400 30223	WASH/RINSE SPINDLE	2	35	6195	HOSE 38mm 2 PLY RADIATOR	145 mm
18	1896	GASKET FOR 40mm DRAIN WASTE	1				

© Washtech Ltd, January 2021

XP-3 WASHTECH RINSE SYSTEM

XP 30002 14/06/2017 REV 1-A

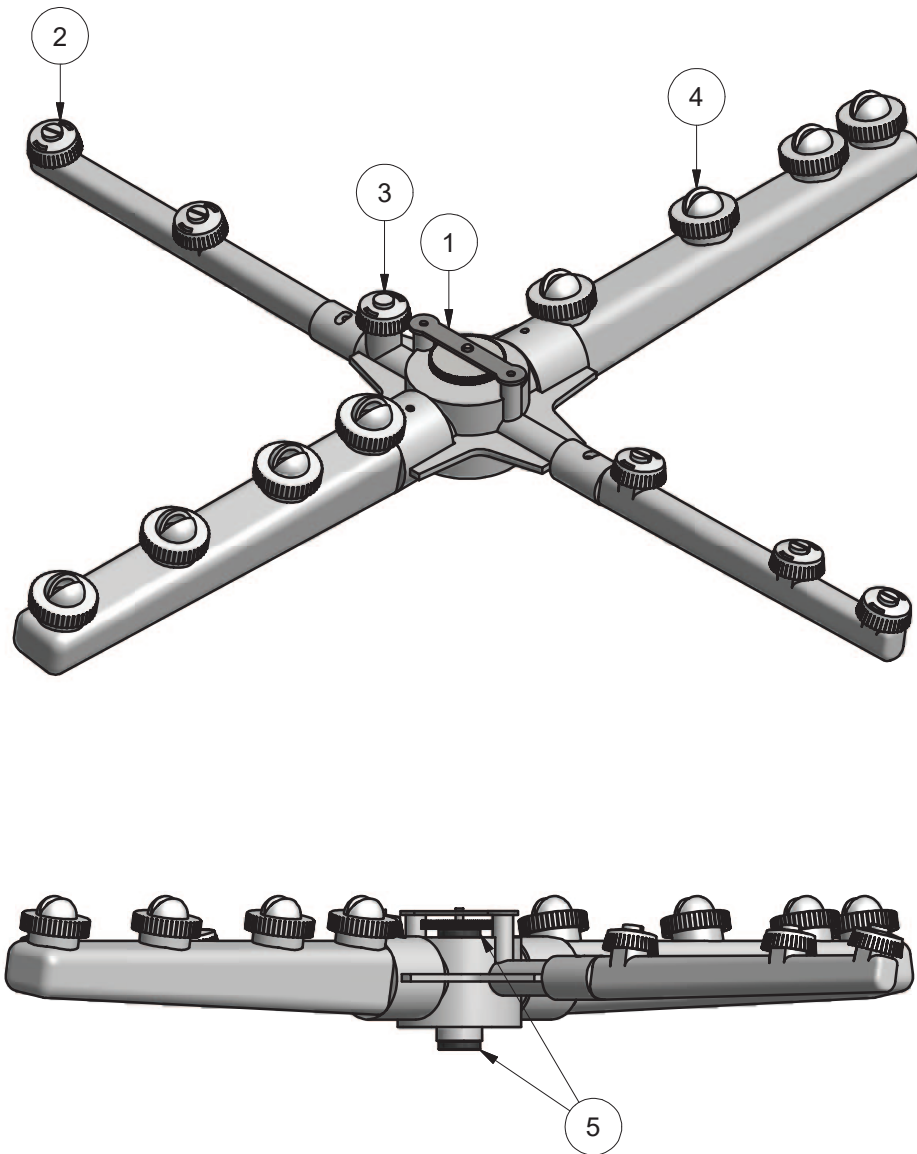
A = 1050
B = 1200
C = 200
D = 800
E = 800
F = 700



Parts List				Parts List			
ITEM	PART #	DESCRIPTION	QTY	ITEM	PART #	DESCRIPTION	QTY
1	400 90078	GM/GL WASH TEE	1	8	ASS05	HOSE CLAMP	10
2	600 30183	REED SWITCH STEM	1	9	3342	SOLENOID VALVE 1 WAY 90 DEG	1
3	303 10003	XP-4 WASH/RINSE MANIFOLD ASSEMBLY	1	10	600 60053	VACUUM BREAKER 1/2" ASSY	1
4	600 41148	WASH/RINSE ARM	2	11	400 21088	RINSE TANK SUPPORT BRKT	1
5	303 10029	XP-3 WASHTECH RINSE TANK SS ASSEMBLY	1	12	400 30223	WASH/RINSE SPINDLE	2
6	600 30526	PUMP PERISTALTIC DETERGENT ADJUSTABLE	1	13	600 30487	NON RETURN VALVE	1
7	1247	INLET SOLENOID SUPPORT	1	14	280 30003	TEE BRACKTON RINSE AID	1
				15	600 30480	PUMP PERISTALTIC RINSE AID ADJUSTABLE	1

WASH/RINSE ARM ASSEMBLY

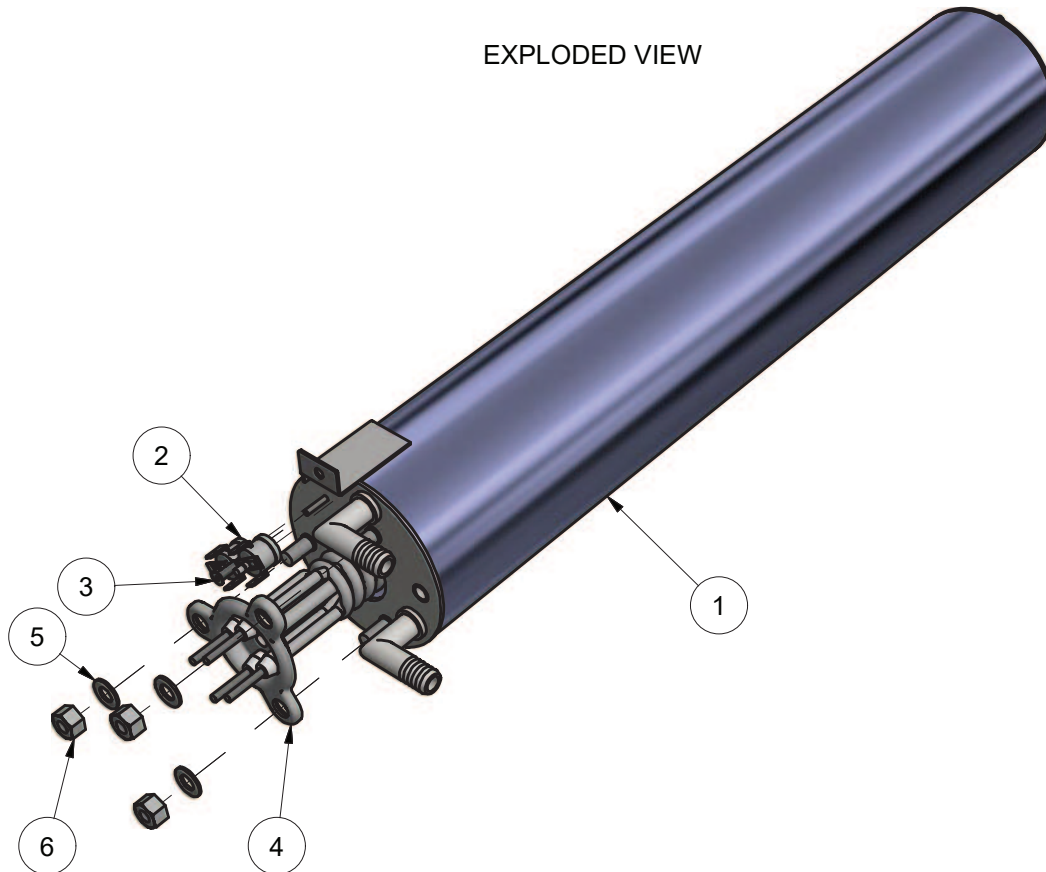
600 41148 8/05/2015 REV 1-D



Parts List			
ITEM	PART NUMBER	DESCRIPTION	QTY
1	600 41191	THUMB SCREW RETAINING PLATE	1
2	600 40049	JET GM5 RINSE	5
3	600 40050	JET GM5 BLIND RINSE	1
4	600 40015	PLASTIC WASH JET EP/EU	8
5	600 40064	WASH/RINSE ARM BUSH	2

XP-3(W) RINSE TANK SS ASSEMBLY

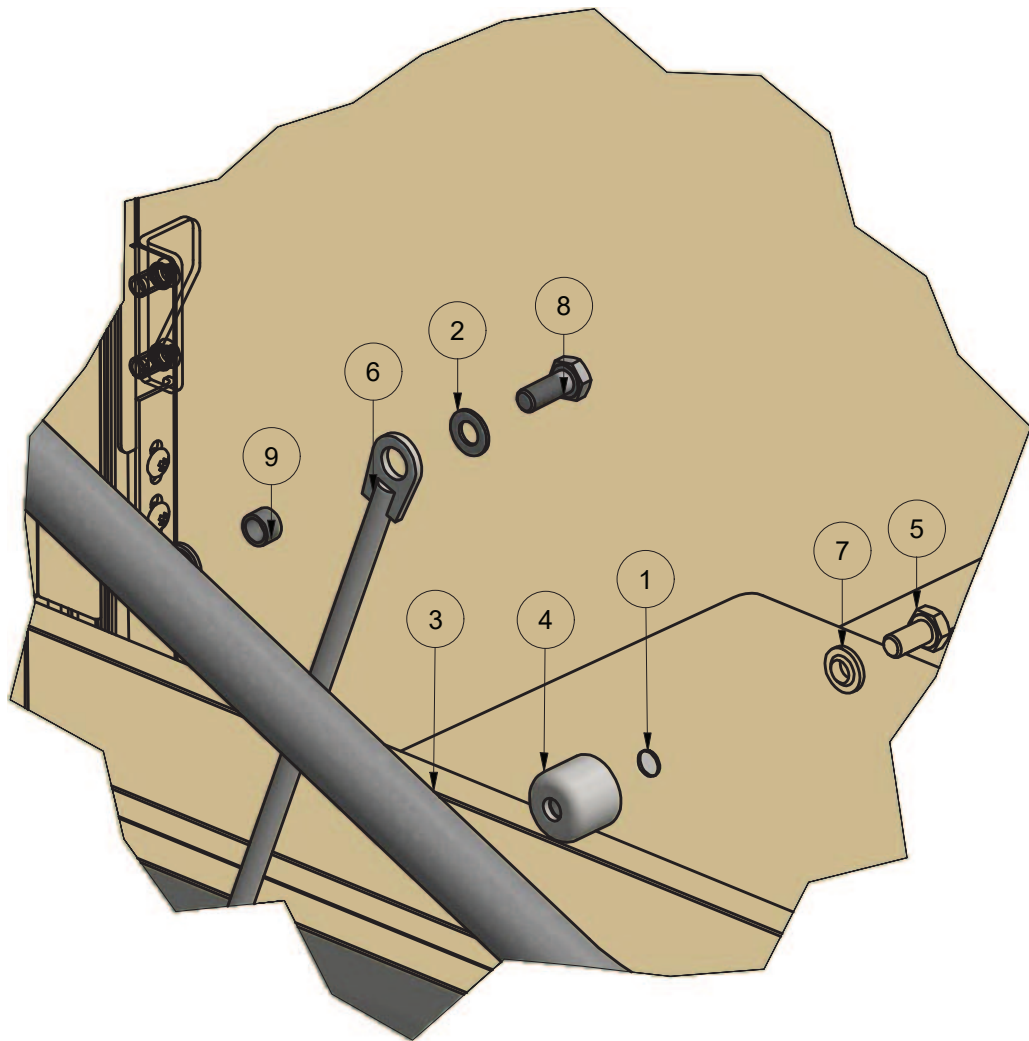
303 10029 18/04/2017 REV 3-A



Parts List			
ITEM	PART NUMBER	DESCRIPTION	QTY
1	303 10017	XP3/XL2 RINSE TANK SS SUB ASSEMBLY 538MM	1
2	600 30088	TSTAT TY60/R-110C [WITH E BKT]	2
3	600 80064	STANDOFF M3 x 12	1
4	600 30496	ELEMENT RINSE 6kW	1
5	600 80022	WASHER FL SS 304 M8x16x1.2mm	3
6	600 80063	NUT NYLOC SS M8	3

XP-3 DOOR LINK ASSEMBLY

303 10001 7/12/2018 REV 1-B

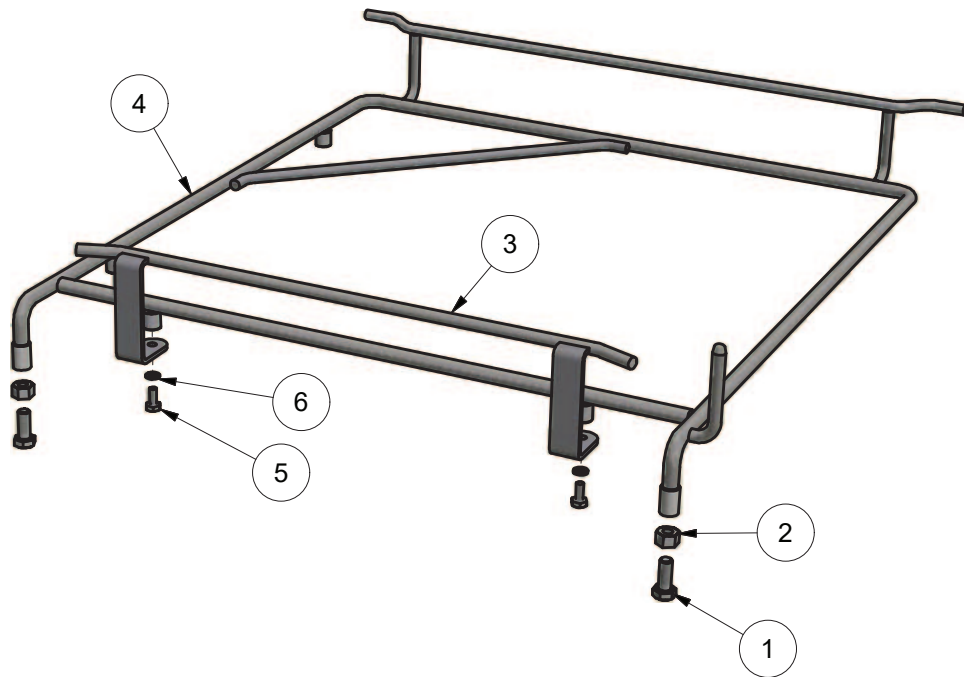


Parts List			
ITEM	PART NUMBER	DESCRIPTION	QTY
1	303 10007	XP-3 DOOR ASSY	1
2	600 80022	WASHER FL SS 304 M8x16x1.2mm	1
3	328 10012	M2(4) ASSY DOOR HANDLE	1
4	400 30225	PASSTHROUGH DOOR STAY MOUNT	1
5	600 80029	M8x12 HEX HD SET SCREW T304	1
6	400 10206	PASSTHROUGH DOOR STAY ASSY	1
7	600 80158	8mm TYPE A SEALING WASHER	1
8	600 80030	M8x20 HEX HD SET SCREW T304	1
9	1658	SPACER	1

M2 RACKSLIDE ASSEMBLY

328 10026 30/05/2016 REV 3-B

EXPLODED VIEW

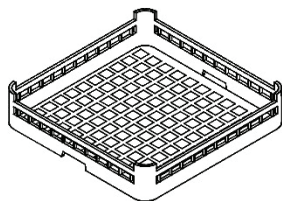


Parts List			
ITEM	PART NUMBER	DESCRIPTION	QTY
1	600 80030	M8x20 HEX HD SET SCREW T304	2
2	600 80063	NUT NYLOC SS M8	2
3	328 10008	RACK GUIDE ROD ASSEMBLY	1
4	328 10024	M2 RACKSLIDE SUB-ASSEMBLY	1
5	600 80135	M5 x 12 SS HEX HEAD BOLT	2
6	8567	WASHER SPRING SS 304 M5	2

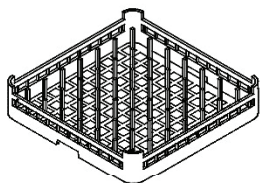
Accessories

XP3 Accessories

- Part #: XP3 ACW
- Date: 04/12/2018
- Version: 1-B



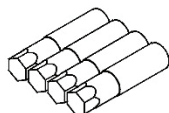
600 70029
CUPRACK CB 500mm X 75mm high



600 70028
DISHRACK P12/18 500mm 18 DISH



C660503
CUTLERY CONTAINER G



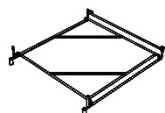
600 90154
SS LEG 63 D x 225 - 325mm x M12



329 15002
XP SCRAP TRAY ASSEMBLY



600 90080
2M S/S HOSE



328 10026
M2(4) RACK SLIDE ASSEMBLY

Information supplied in this manual is copyright. No part of this work may be reproduced or copied in any form or by any means, electronic or mechanical without the express permission of the author/publisher

Distributed in Australia by Moffat Pty Limited



740 Springvale Road
Mulgrave 3170
Victoria
Australia

24HR Service 1300 264 217
Parts 1300 263 107
Tel 03 9518 3888
Fax 03 9518 3818
E-mail sales@moffat.com.au
web www.moffat.com.au

ISO9001

All Washtech products are designed and manufactured by Washtech using the internationally recognised ISO9001 quality management system, covering design, manufacture and final inspection, ensuring consistent high quality at all times.

In line with policy to continually develop and improve its products, Washtech Ltd reserves the right to change specifications and design without prior notice.

an Ali Group Company



The Spirit of Excellence

