

XP

Service Manual



WASHTECH®
PROFESSIONAL WASH SYSTEMS



Spare Parts XP-3

DESCRIPTION	PART NO	REC. STOCK
-------------	---------	------------

Controls & Door

Control Panel Sub-Assembly	303 10008
Control Panel Label	400 70189
Spring Door 27 x 735 x 5	326 30019

Controls & Indicators

Contactora	600 30337
Door Reed Switch	600 30183
Door Relay	600 30223
Electronic Timer	600 30513
Power Cord Set 15A	600 30452
Pressure Switch 140/60mm	600 30479
Ready Light	600 30529
Run Light	600 30528
Selector Switch 4 Position	600 30269
Selector Switch Knob	600 30524
Temperature Gauge	600 30546
Temperature Gauge Sensor 1.8m	600 30604
Terminal Strip 12 Way	3229

Heating Components

Over Temperature Thermostat	600 30088
Rinse Element 6 KW	600 30496
Rinse Tank Assembly	303 10029
Rinse Thermostat	30201
Wash Element 2.5 KW	600 30226
Wash Thermostat	30201

Hoses & Fittings

Hose Clip ASS05	ASS05
Pressure Switch Hose	3067
Rinse Hose	600 60073
Wash Pump Inlet Hose	6194
Wash Pump Outlet Hose	1261
Wash Tee Connection Hose	6196
Wash Tee to Manifold Hose	6196

Spare Parts XP-3

DESCRIPTION	PART NO	REC. STOCK
-------------	---------	------------

Pumps & Solenoids

Detergent Pump Hose	600 30148
Detergent Pump	600 30526
Detergent Squeeze Tube	600 30134
Rinse Aid Pump	600 30480
Rinse Aid Squeeze Tube	600 30119
Solenoid Valve	3342
Wash Pump Capacitor 12.5 μ F	3892
Wash Pump	600 30299

Wash Tank Components

Drain Upstand	400 10144
Pressure Bell	400 90135
Pressure Bell O Ring	ARP 205
Rinse Nozzle Closed Head	600 40050
Rinse Nozzle Opened Head	600 40049
Rinse Nozzle O-Ring (OR R6 NBR)	600 40051
Scrap Tray 329 15002	
Wash Nozzle Opened head	600 40025
Wash Nozzle O-Ring (OR 2050 NBR)	600 40048
Wash Pump Filter (From SN 156993)	303 20045
Wash Pump Filter (Prior to SN 156993)	326 20010
Wash / Rinse Arm Assembly	600 41148
Wash / Rinse Arm Bush	400 40064

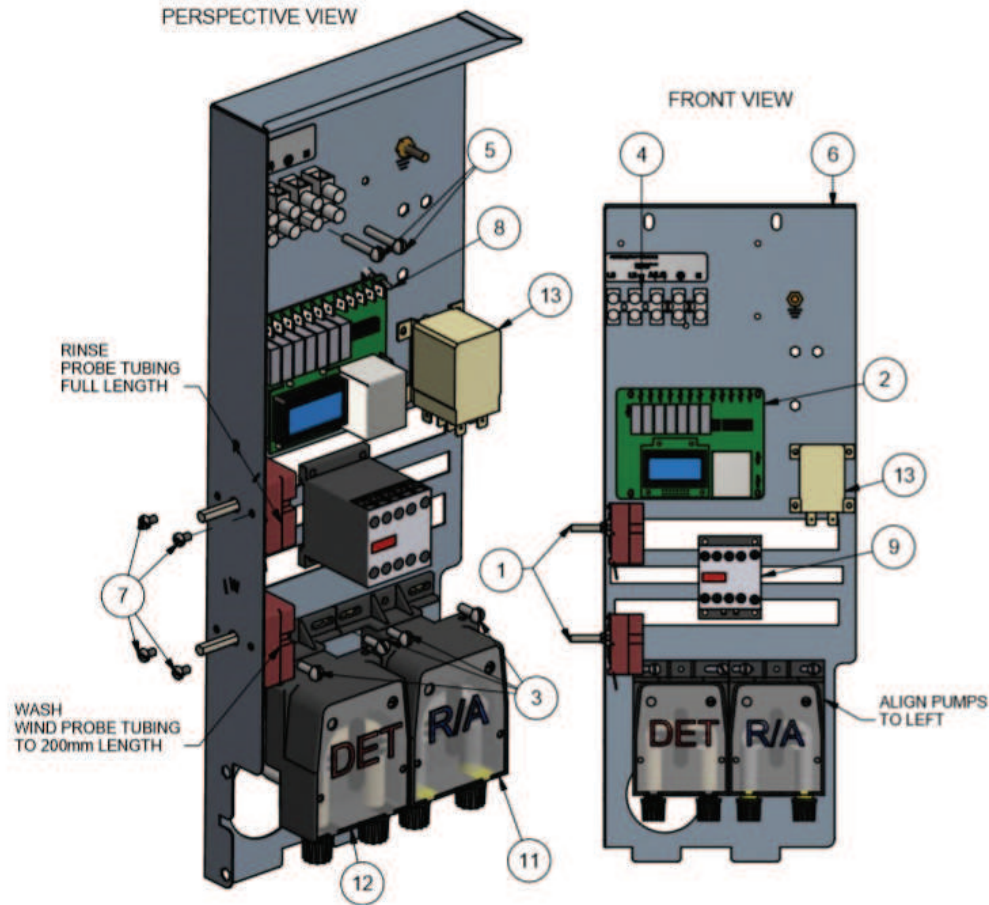
Note:

For more parts look in the section "Assembly Diagrams".

Assembly Diagram

XP-3 WIRING TRAY ASSEMBLY

- Part #: 303 10020
- Date: 3/08/2017
- Version: 1-B

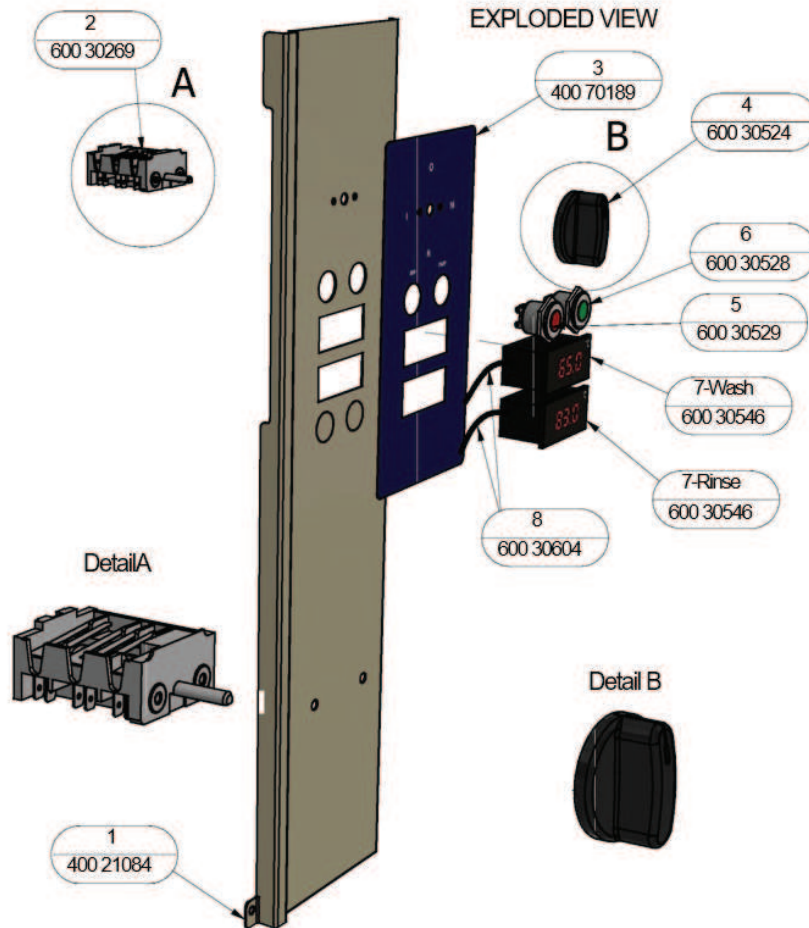


Parts List			
ITEM	PART NUMBER	DESCRIPTION	QTY
1	30201	THERMOSTAT 1 POLE	2
2	600 30513	TIMER ELECTRONIC	1
3	8801	MS PAN POZI ZP M4x12	4
4	3229	TERMINAL STRIP 12 WAY x 0.5	1
5	8802	MS PAN POZI ZP M4x25	2
6	302 10019	X-RANGE WIRING TRAY SUB-ASSEMBLY	1
7	8800	MS PAN POZI ZP M4x6	4
8	600 30527	PCB SUPPORT-END DOME HEAD	4
9	600 30337	CONTACTOR 20A 3NO/NC 230-240V	1
10	LABEL	POWER SUPPLY TERMINAL LABEL	1
11	600 30480	PERISTALTIC RINSE AID PUMP ADJUSTABLE	1
12	600 30526	PERISTALTIC DETERGENT PUMP ADJUSTABLE	1
13	600 30223	JQX-12F POWER RELAY	1

Assembly Diagram

XP / XL CONTROL PANEL ASSY

- Part #: 303 10008
- Date: 6/12/2019
- Version: 3-C



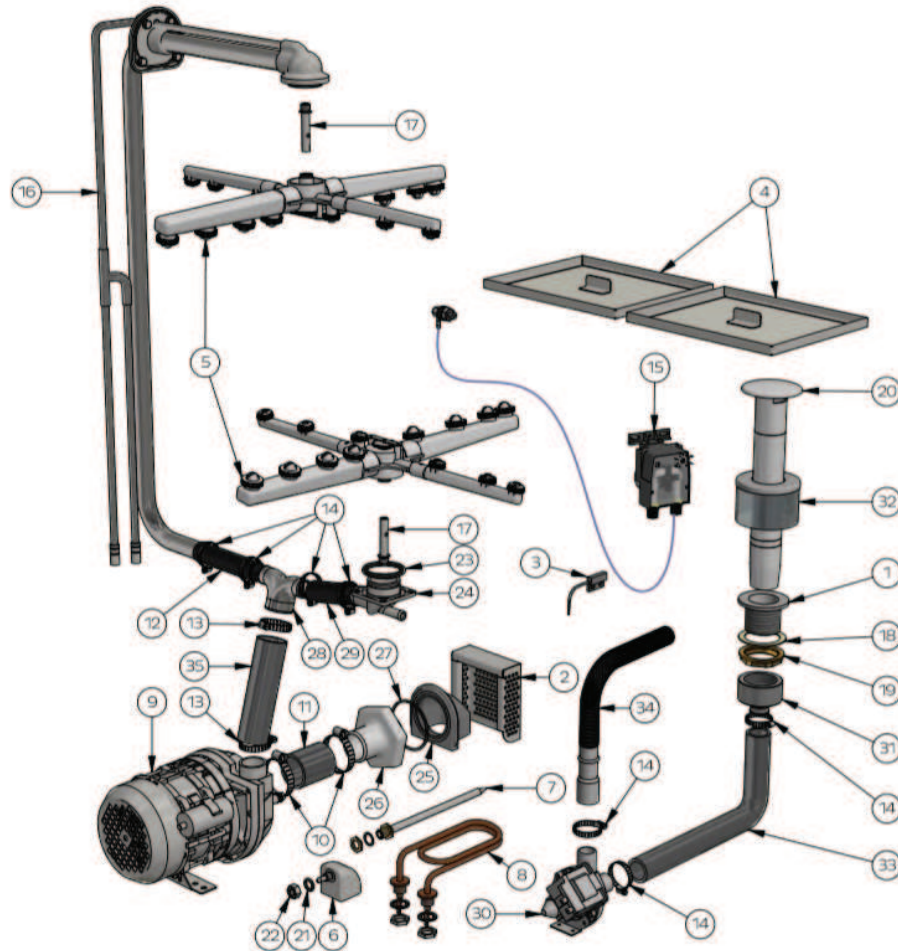
Parts List			
ITEM	PART NUMBER	DESCRIPTION	QTY
1	400 21084	M1-4/XP CONTROL PANEL	1
2	600 30269	SWITCH 4 WAY QUICK CONNECT	1
3	400 70189	Label XP/M1 Control Panel	1
4	600 30524	Knob Selector Switch	1
5	600 30529	Light Red 22mm 220VAC LED Stainless Steel	1
6	600 30528	Light Green 22mm 220VAC LED Stainless Steel	1
7	600 30546	TEMPERATURE GAUGE AG-903 (MALE TERMINAL)	2
8	600 30604	SENSOR TEMPERATURE 1.8M V3 METAL CAP (FEMALE TERMINAL)	2

DATE	DESCRIPTION	REV
6/12/19	CHANGE TEMP GAUGES, ADD SENSORS	3-C

Assembly Diagram

XP-3 CW DRAIN PUMP

- Part #: XP 30007
- Date: 15/07/2019
- Version: 1-A



Parts List				Parts List			
ITEM	PART NUMBER	DESCRIPTION	QTY	ITEM	PART NUMBER	DESCRIPTION	QTY
1	400 30042	WASTE DRAIN PLASTIC 40mm PLASTIC	1	19	6037	BACKNUT 126 x 40mm	
2	326 20010	M2(3) WASH INLET FILTE	1	20	400 10144	UPSTAND "K"	1
3	600 30183	REED SWITCH STEM	1	21	ARP205	O-RING 11IDx18OD	1
4	329 15002	ASSEMBLY SCRAP TRAY XP	2	22	600 80009	M10 SS HX NUT	1
5	600 41148	WASH/RINSE ARM	2	23	ARP328	O-RING 47.35IDx54OD	1
6	400 90135	PRESSURE BELL CASTING	1	24	400 90078	GM/GL WASH TEE	1
7	400 10065	ASSY THERM PROBE POCKET	1	25	400 90178	WASH INLET CASTING	1
8	600 30226	ELEMENT 2500W 240V (THREE LOOP)	1	26	400 90193	PLASTIC WASH PUMP INLET EXTERNAL	1
9	600 30299	WASH PUMP 1Hp	1	27	ARP233	O-RING ARP233	1
10	ASS28	HOSE CLAMP ASS28	2	28	400 90069	38mm x 25mm REDUCER TEE	1
11	6194	HOSE 44mm 2 PLY RADIATOR	125mm	29	6196	HOSE 25mm 2 PLY RADIATOR	75mm
12	6196	HOSE 25mm 2 PLY RADIATOR	120mm	30	600 60102	DRAIN PUMP B20-6 220-240V 50Hz	1
13	ASS24	HOSE CLAMP ASS24	2	31	38823	DRAIN PUMP UNION	1
14	ASS16	HOSE CLAMP ASS16	7	32	400 10021	ASSY DRAIN PUMP FILTER	1
15	600 30526	PERISTALTIC DETERGENT PUMP ADJUSTABLE	1	33	400 90012	HOSE GLV & UD UPPER WASH	250 x 120mm
16	303 10003	XP-4/M2-4&C WASH/RINSE MANIFOLD ASSEMBLY	1	34	600 60105	Hose LHCXP6 Drain	1
17	400 30223	WASH/RINSE SPINDLE	2	35	6195	HOSE 38mm 2 PLY RADIATOR	145mm
18	1896	GASKET FOR 40mm DRAIN WASTE	1				

© Washtech Ltd, January 2021

MOFFAT
www.moffat.com.au



SPARES
WEBSTORE spares.moffat.com.au



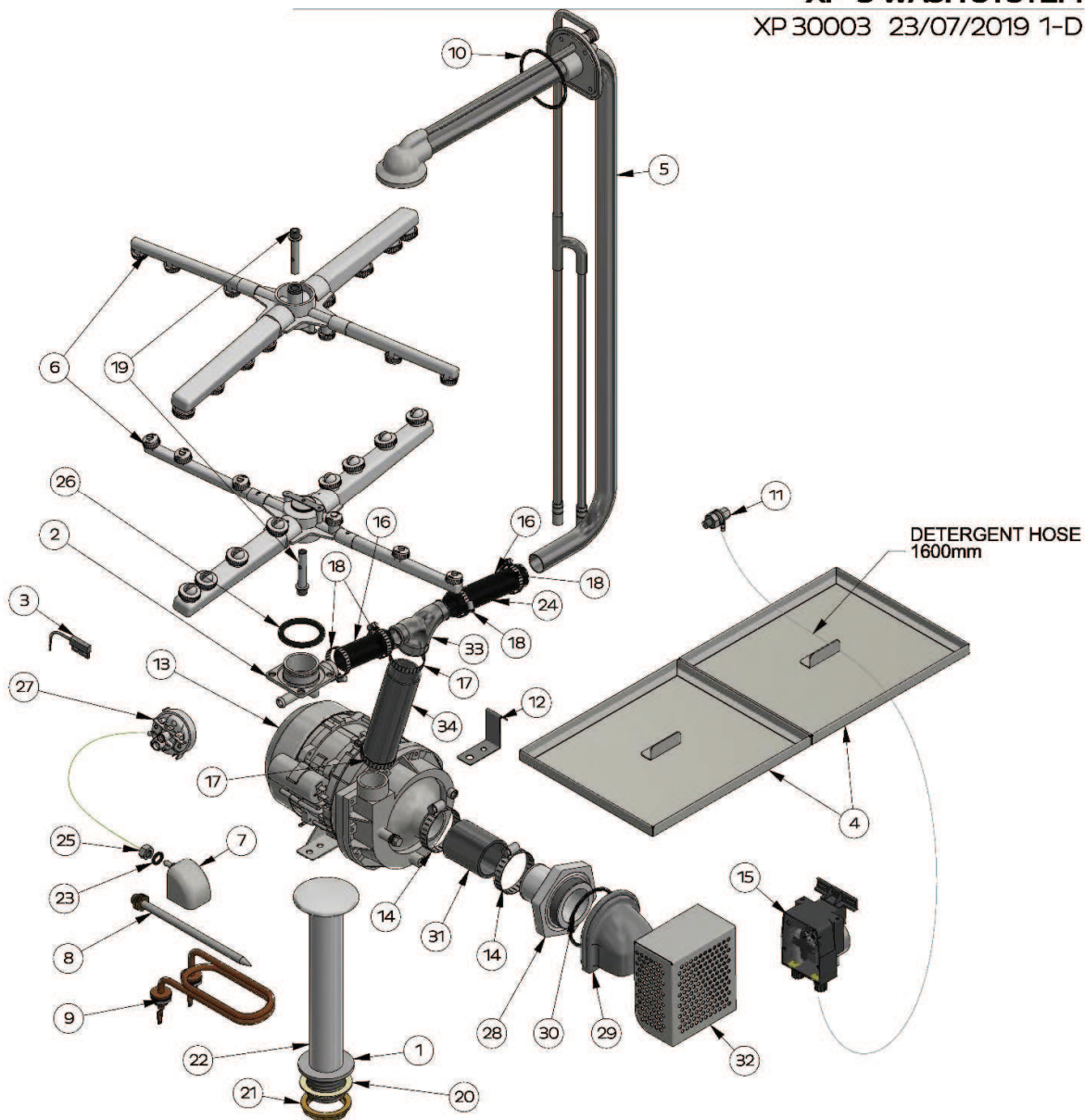
1300 263 107



sparesinfo@moffat.com.au

XP-3 WASH SYSTEM

XP 30003 23/07/2019 1-D



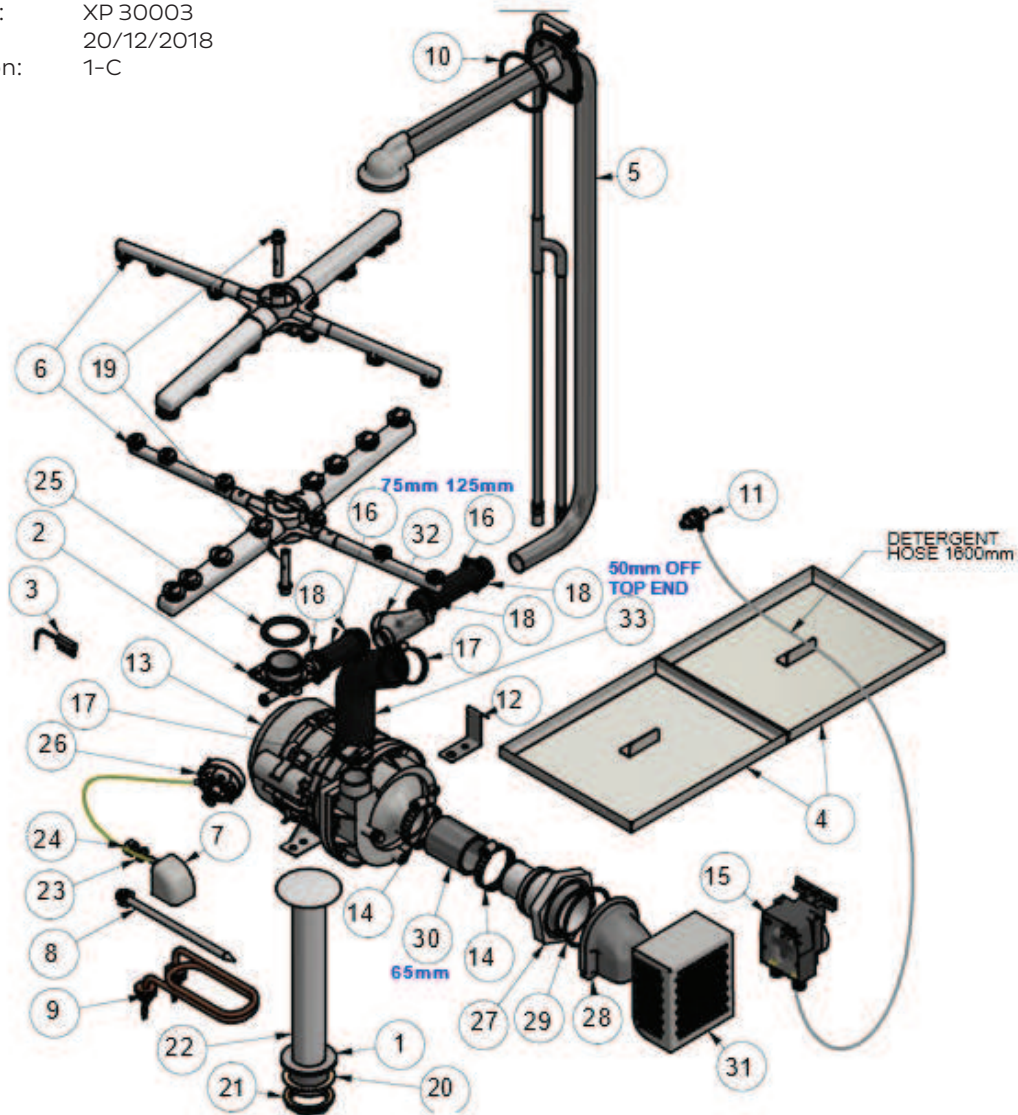
Parts List				Parts List			
ITEM	PART NUMBER	DESCRIPTION	QTY	ITEM	PART NUMBER	DESCRIPTION	QTY
1	400 30042	WASTE DRAIN 40mm PLASTIC	1	18	ASS16	HOSE CLAMP ASS16	4
2	400 90078	G.M.G.C. WASH TEE	1	19	400 90225	WASH/RINSE SPINDLE	2
3	600 30183	REED SWITCH STEM	1	20	1896	GASKET 40mm DRAIN WASTE	1
4	329 15002	ASSEMBLY SCRAP TRAY XP	2	21	6037	BACKNUT 126 x 40mm	1
5	303 10003	XP-3 MANIFOLD ASSEMBLY	1	22	400 10144	UPSTAND 277mm LETTER K	1
6	600 41148	WASH/RINSE ARM	2	23	ARP205	O-RING 11IDx18OD	1
7	400 90135	PRESSURE BELL CASTING	1	24	6196	HOSE 25mm 2 PLY RADIATOR	120 mm
8	400 10065	ASSY THERM PROBE POCKET	1	25	600 80009	M10 SS HX NUT	1
9	600 30226	ELEMENT 2500W/240V	1	26	ARP328	O-RING 47.35IDx54OD	1
10	ARP235	O-RING ARP235	1	27	600 30479	PRESSURE SWITCH 140/60MM	1
11	600 30170	SS INLET FITTING	1	28	400 90193	AL WASH PUMP INLET CASTING EXT	1
12	326 20071	M2(3) WASH PUMP BRACKET	1	29	400 90178	AL WASH PUMP INLET CASTING INT	1
13	600 30299	WASH PUMP 1HP	1	30	ARP233	O-RING ARP233	1
14	ASS28	HOSE CLAMP ASS28	2	31	6194	HOSE 44mm 2 PLY RADIATOR	60mm
15	600 30526	DET PUMP PERI ADJUSTABLE	1	32	303 20045	XP(3) WASH INLET FILTER	1
16	6196	HOSE 25mm 2 PLY RADIATOR	75 mm	33	400 90069	38mm x 25mm REDUCER TEE	1
17	ASS24	HOSE CLAMP ASS24	2	34	6195	HOSE 38mm 2 PLY RADIATOR	145 mm

© Washtech Ltd. January 2021

Assembly Diagram

XP-3 WASH SYSTEM

- Part #: XP 30003
- Date: 20/12/2018
- Version: 1-C



Parts List				Parts List			
ITEM	PART NUMBER	DESCRIPTION	QTY	ITEM	PART NUMBER	DESCRIPTION	QTY
1	400 30042	WASTE DRAIN 40mm PLASTIC	1	18	ASS16	HOSE CLAMP ASS16	4
2	400 90078	GM/GL WASH TEE	1	19	400 30223	WASH/RINSE SPINDLE	2
3	600 30183	REED SWITCH STEM	1	20	1896	GASKET 40mm DRAIN WASTE	1
4	329 15002	ASSEMBLY SCRAP TRAY XP	2	21	6037	BACKNUT 126 x 40mm	1
5	303 10003	XP-3 MANIFOLD ASSEMBLY	1	22	400 10144	UPSTAND 277mm LETTER K	1
6	600 41148	WASH/RINSE ARM	2	23	ARP205	O-RING 11IDx18OD	1
7	400 90135	PRESSURE BELL CASTING	1	24	600 80009	M10 SS HX NUT	1
8	400 10065	ASSY THERM PROBE POCKET	1	25	ARP328	O-RING 47.35IDx54OD	1
9	600 30226	ELEMENT 2500W 240V	1	26	600 30479	PRESSURE SWITCH 140/60MM	1
10	ARP235	O-RING ARP235	1	27	400 90180	AL WASH PUMP INLET CASTING EXT	1
11	600 30170	SS INLET FITTING	1	28	400 90178	AL WASH PUMP INLET CASTING INT	1
12	326 20071	M2(3) WASH PUMP BRACKET	1	29	ARP233	O-RING ARP233	1
13	600 30299	WASH PUMP 1HP	1	30	6194	HOSE 44mm 2 PLY RADIATOR	65mm
14	ASS28	HOSE CLAMP ASS28	2	31	303 20045	XP(3) WASH INLET FILTER	1
15	600 30526	DET PUMP PERI ADJUSTABLE	1	32	400 90069	38mm x 25mm REDUCER TEE	1
16	6196	HOSE 25mm 2 PLY RADIATOR	200mm	33	1261	UHB38 HOSE ELBOW	1
17	ASS24	HOSE CLAMP ASS24	2				

© Washtech Ltd, January 2021

MOFFAT
www.moffat.com.au



SPARES
WEBSTORE spares.moffat.com.au



1300 263 107

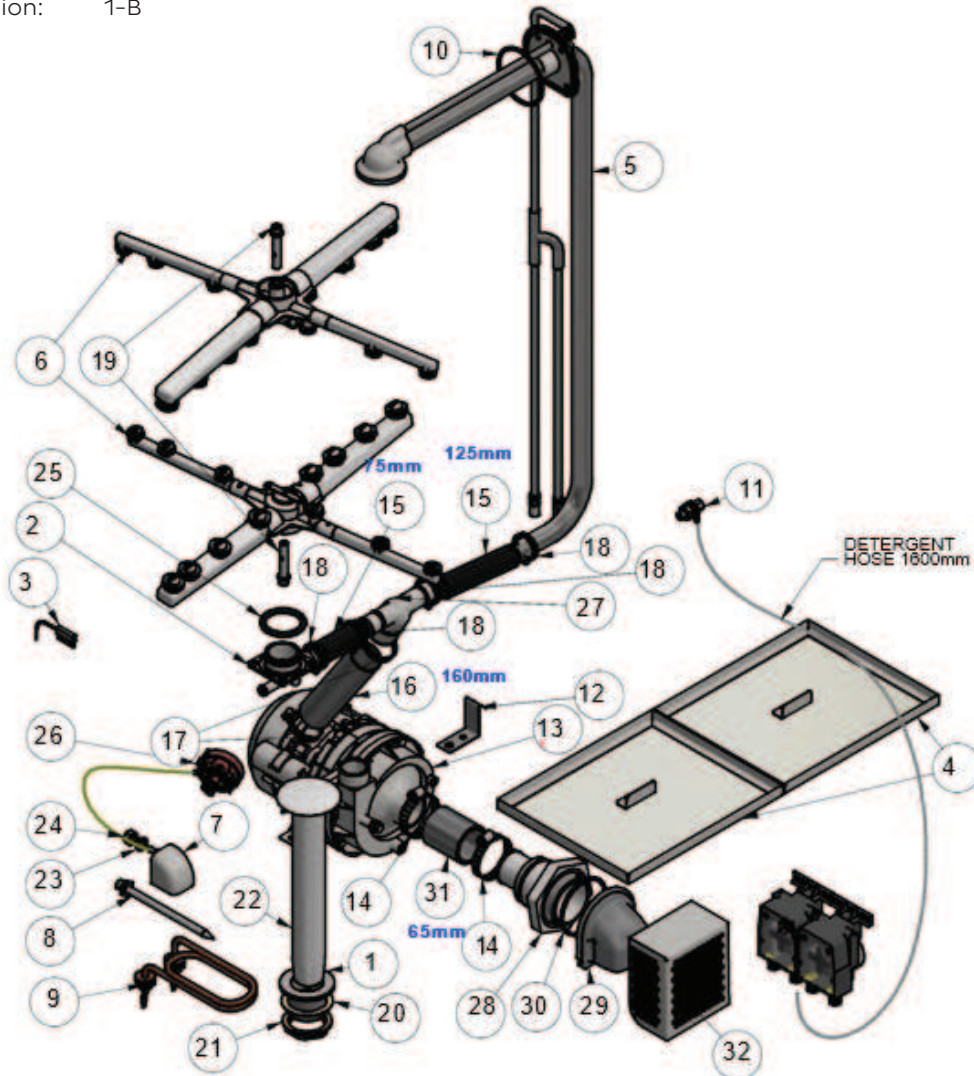


sparesinfo@moffat.com.au

Assembly Diagram

XP-3 WASH SYSTEM

- Part #: XP 30003
- Date: 2/07/2018
- Version: 1-B

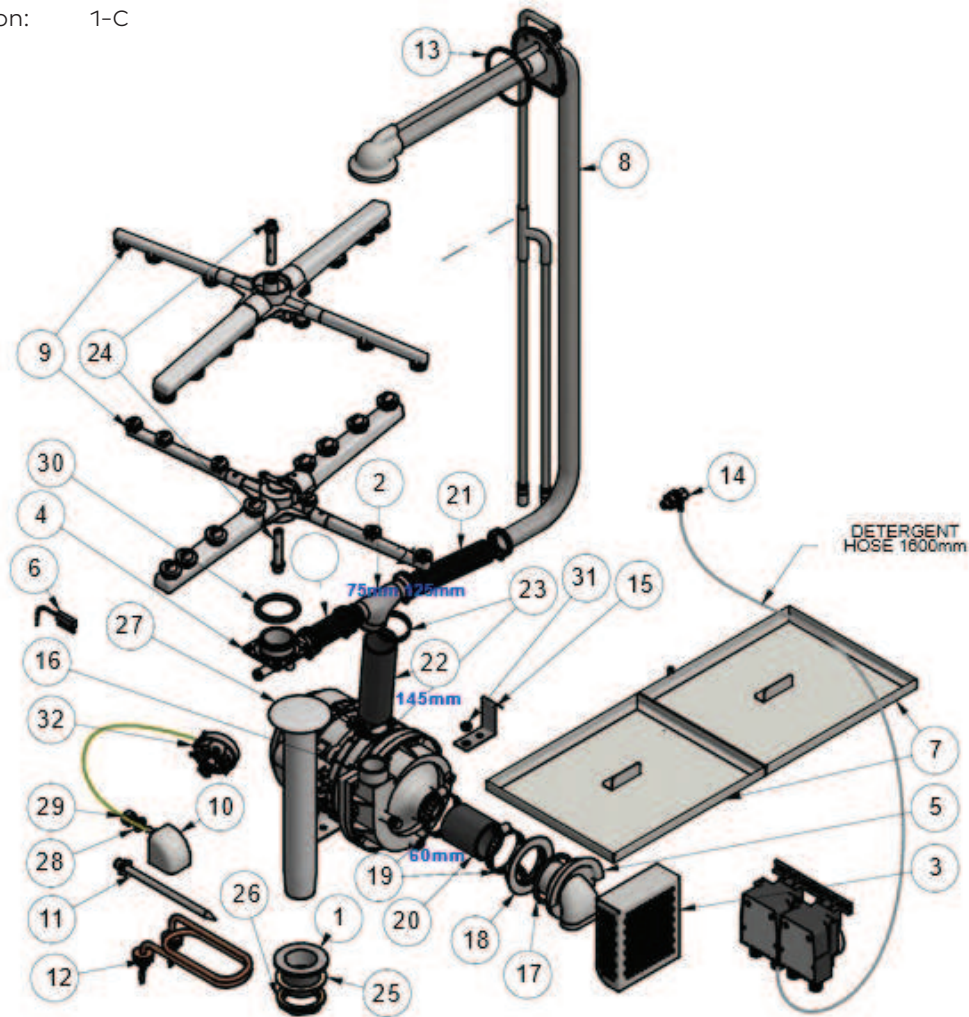


Parts List				Parts List			
ITEM	PART NUMBER	DESCRIPTION	QTY	ITEM	PART NUMBER	DESCRIPTION	QTY
1	400 30042	WASTE DRAIN 40mm PLASTIC	1	17	ASS24	HOSE CLAMP ASS24	2
2	400 90078	GM/GL WASH TEE	1	18	ASS16	HOSE CLAMP ASS16	4
3	600 30183	REED SWITCH STEM	1	19	400 30223	WASH/RINSE SPINDLE	2
4	329 15002	ASSEMBLY SCRAP TRAY XP	2	20	1896	GASKET 40mm DRAIN WASTE	1
5	303 10003	XP-3 MANIFOLD ASSEMBLY	1	21	6037	BACKNUT 126 x 40mm	1
6	600 41148	WASH/RINSE ARM	2	22	400 10144	UPSTAND 277mm LETTER K	1
7	400 90135	PRESSURE BELL CASTING	1	23	ARP205	O-RING 11IDx18OD	1
8	400 10065	ASSY THERM PROBE POCKET	1	24	600 80009	M10 SS HX NUT	1
9	600 30226	ELEMENT 2500W 240V	1	25	ARP328	O-RING 47.35IDx54OD	1
10	ARP235	O-RING ARP235	1	26	600 30479	PRESSURE SWITCH 140/60MM	1
11	600 30170	SS INLET FITTING	1	27	400 91069	38mm x 25mm REDUCER TEE	1
12	326 20071	M2(3) WASH PUMP BRACKET	1	28	400 90180	AL WASH PUMP INLET CASTING EXT	1
13	600 30299	WASH PUMP 1HP	1	29	400 90178	AL WASH PUMP INLET CASTING INT	1
14	ASS28	HOSE CLAMP ASS28	2	30	ARP233	O-RING ARP233	1
15	6196	HOSE 25mm 2 PLY RADIATOR	200mm	31	6194-60	HOSE 44mm 2 PLY RADIATOR	65mm
16	6195	HOSE 38mm 2 PLY RADIATOR	160mm	32	303 20045	XP(3) WASH INLET FILTER	1

Assembly Diagram

XP-3 WASH SYSTEM

- Part #: XP 30003
- Date: 20/12/2018
- Version: 1-C



Parts List				Parts List			
ITEM	PART NUMBER	DESCRIPTION	QTY	ITEM	PART NUMBER	DESCRIPTION	QTY
1	400 30042	WASTE DRAIN 40mm PLASTIC	1	17	ARP331	O-RING 47.35IDx54OD	1
2	400 90069	38mm x 25mm REDUCER TEE	1	18	400 90115	13/4" S/S BACKNUT	1
3	326 20010	M2(3) WASH INLET FILTER	1	19	ASS28	HOSE CLAMP ASS28	2
4	400 90078	GM/GL WASH TEE	1	20	6194	HOSE 44mm 2 PLY RADIATOR	1
5	400 90114	M2 WASH PUMP INLET	1	21	6196	HOSE 25mm 2 PLY RADIATOR	1
6	600 30183	REED SWITCH STEM	1	22	6195	HOSE 38mm 2 PLY RADIATOR	1
7	329 15002	ASSEMBLY SCRAP TRAY XP	2	23	ASS24	HOSE CLAMP ASS24	2
8	303 10003	XP-4 MANIFOLD ASSEMBLY	1	24	400 30223	WASH/RINSE SPINDLE	2
9	600 41148	WASH/RINSE ARM	2	25	1896	GASKET 40mm DRAIN WASTE	1
10	400 90135	PRESSURE BELL CASTING	1	26	6037	BACKNUT 126 x 40mm	1
11	400 10065	ASSY THERM PROBE POCKET	1	27	400 10144	UPSTAND 277mm LETTER K	1
12	600 30226	ELEMENT 2500W 240V	1	28	ARP205	O-RING 11IDx18OD	1
13	ARP235	O-RING ARP235	1	29	600 80009	M10 SS HX NUT	1
14	600 30170	SS INLET FITTING	1	30	ARP328	O-RING 47.35IDx54OD	1
15	326 20071	M2(3) WASH PUMP BRACKET	1	31	600 80101	HANK BUSH 304 SS M6	1
16	600 30299	WASH PUMP 1HP	1	32	600 30479	PRESSURE SWITCH 140/60MM	1

© Washtech Ltd, January 2021

MOFFAT
www.moffat.com.au

SPARES
WEBSTORE spares.moffat.com.au

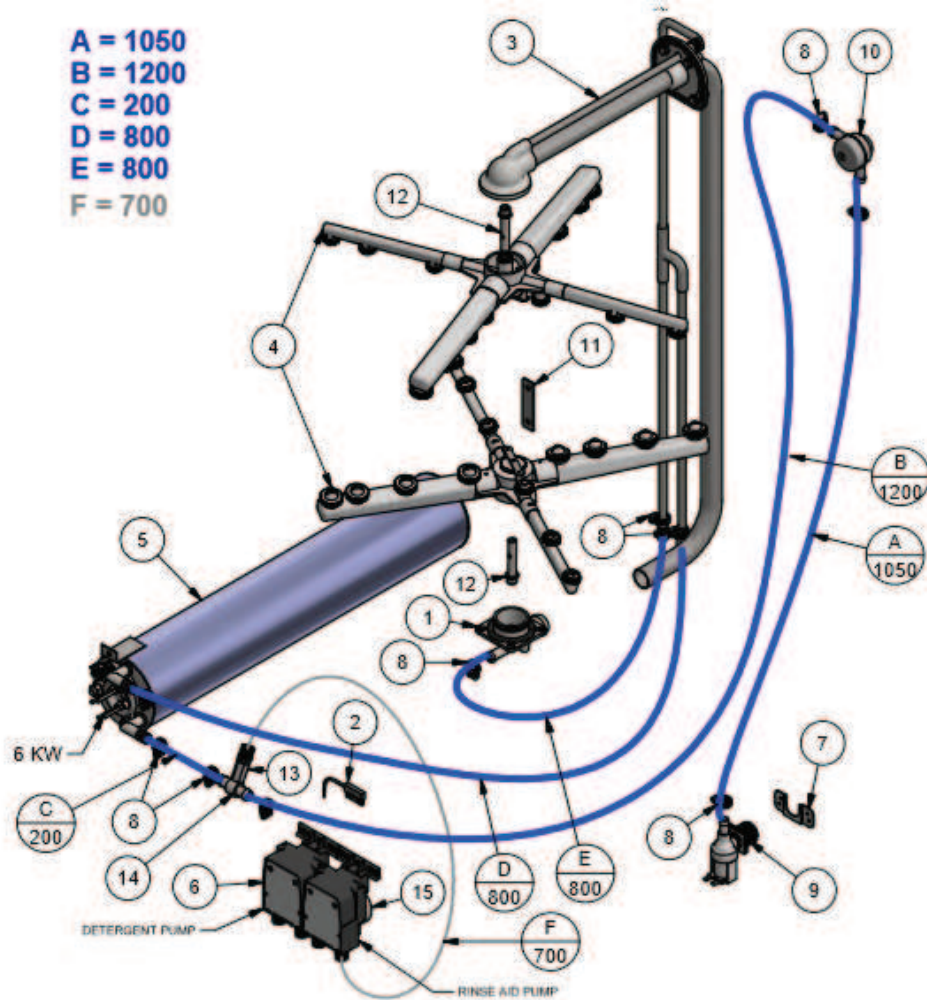
1300 263 107

sparesinfo@moffat.com.au

Assembly Diagram

XP-3 WASHTECH RINSE SYSTEM

- Part #: XP 30002
- Date: 14/06/2017
- Version: 1-A

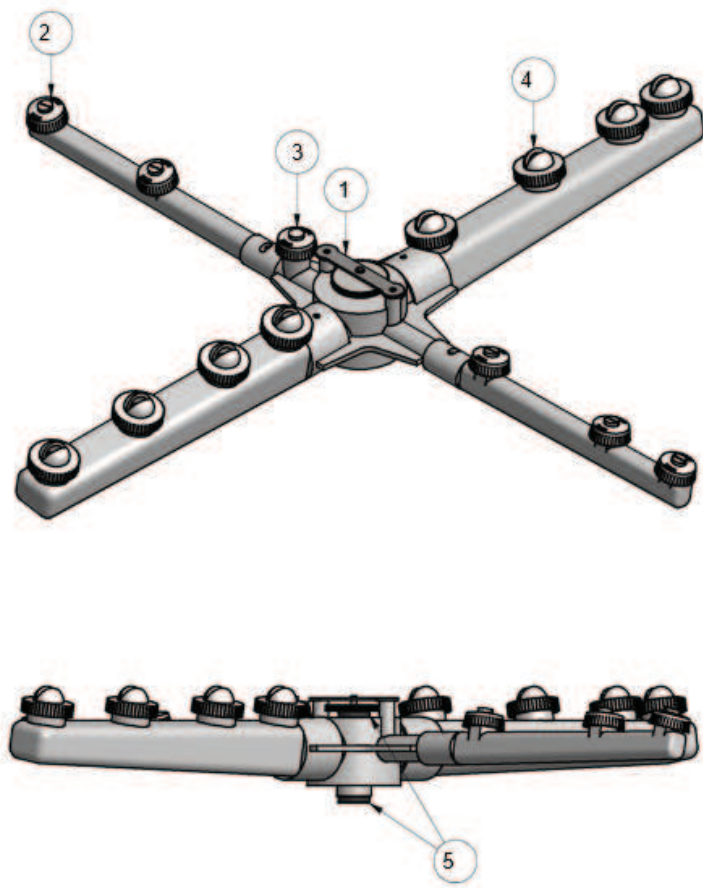


Parts List				Parts List			
ITEM	PART #	DESCRIPTION	QTY	ITEM	PART #	DESCRIPTION	QTY
1	400 90078	GM/GL WASH TEE	1	8	ASS05	HOSE CLAMP	10
2	600 30183	REED SWITCH STEM	1	9	3342	SOLENOID VALVE 1 WAY 90 DEG	1
3	303 10003	XP-4 WASH/RINSE MANIFOLD ASSEMBLY	1	10	600 60053	VACUUM BREAKER 1/2" ASSY	1
4	600 41148	WASH/RINSE ARM	2	11	400 21088	RINSE TANK SUPPORT BRKT	1
5	303 10029	XP-3 WASHTECH RINSE TANK SS ASSEMBLY	1	12	400 30223	WASH/RINSE SPINDLE	2
6	600 30526	PUMP PERISTALTIC DETERGENT ADJUSTABLE	1	13	600 30487	NON RETURN VALVE	1
7	1247	INLET SOLENOID SUPPORT	1	14	280 30003	TEE BRACKTON RINSE AID	1
				15	600 30480	PUMP PERISTALTIC RINSE AID ADJUSTABLE	1

Assembly Diagram

WASH / RINSE ARM ASSEMBLY

- Part #: 600 41148
- Date: 8/05/2015
- Version: 1-D

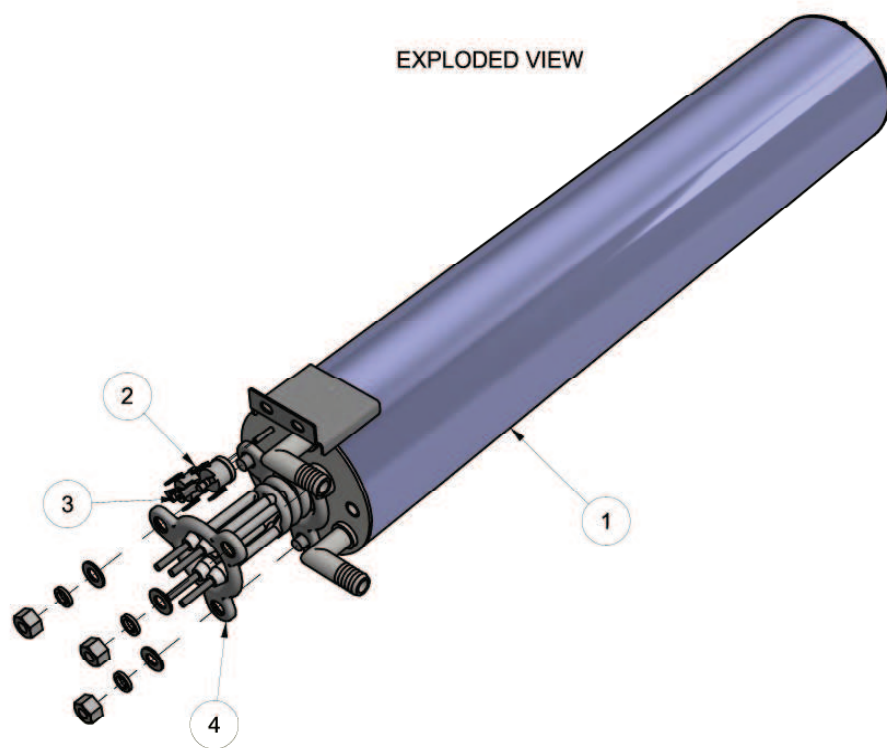


Parts List			
ITEM	PART NUMBER	DESCRIPTION	QTY
1	600 41191	THUMB SCREW RETAINING PLATE	1
2	600 40049	JET GM5 RINSE	5
3	600 40050	JET GM5 BLIND RINSE	1
4	600 40015	PLASTIC WASH JET EP/EU	8
5	600 40064	WASH/RINSE ARM BUSH	2

Assembly Diagram

XP-3 (W) RINSE TANK SS ASSEMBLY

- Part #: 303 10029
- Date: 07/09/2020
- Version: 3-B

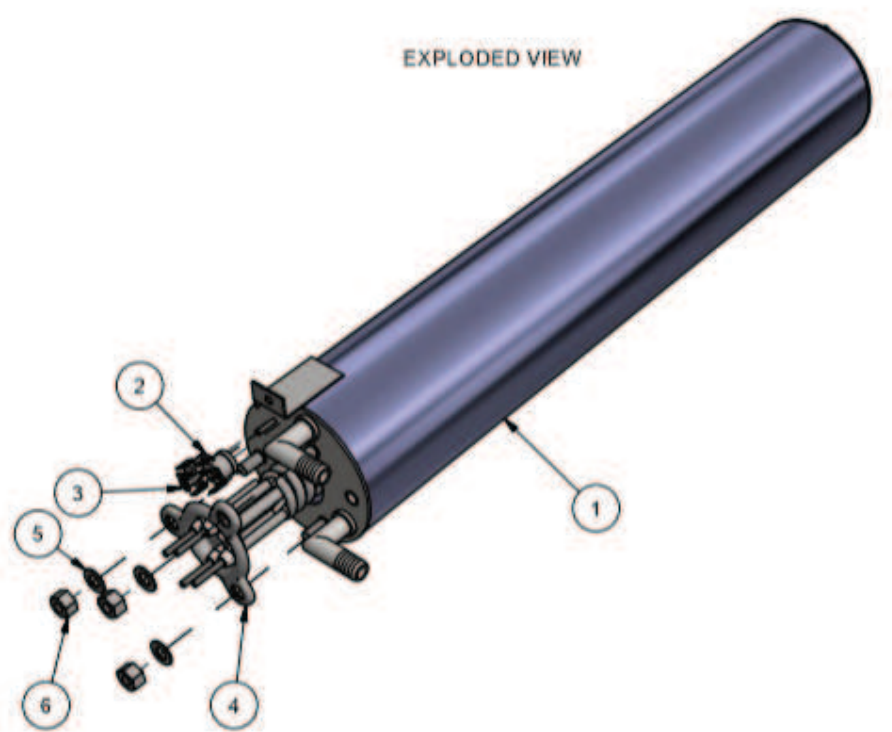


Parts List			
ITEM	PART NUMBER	DESCRIPTION	QTY
1	303 10017	XP3/XL2 RINSE TANK SS SUB ASSEMBLY 538MM	1
2	600 30088	TSTAT TY60/R-110C [WITH E BKT]	2
3	600 80064	STANDOFF M3 x 12	1
4	600 30496	ELEMENT RINSE 6kW	1

Assembly Diagram

XP-3 (W) RINSE TANK SS ASSEMBLY

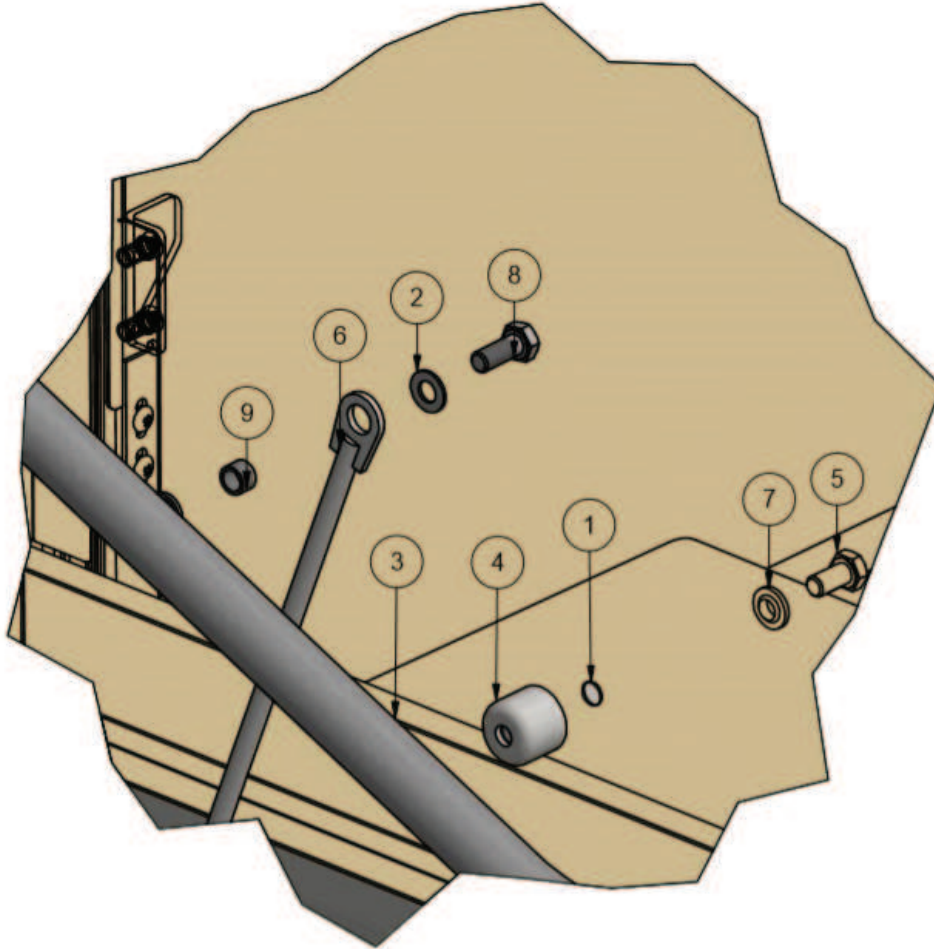
- Part #: 303 10029
- Date: 18/04/2017
- Version: 3-A



Parts List			
ITEM	PART NUMBER	DESCRIPTION	QTY
1	303 10017	XP3/XL2 RINSE TANK SS SUB ASSEMBLY 538MM	1
2	600 30088	TSTAT TY60/R-110C [WITH E BKT]	2
3	600 80064	STANDOFF M3 x 12	1
4	600 30496	ELEMENT RINSE 6kW	1
5	600 80022	WASHER FL SS 304 M8x16x1.2mm	3
6	600 80063	NUT NYLOC SS M8	3

Assembly Diagram

XP-3 DOOR LINK ASSEMBLY

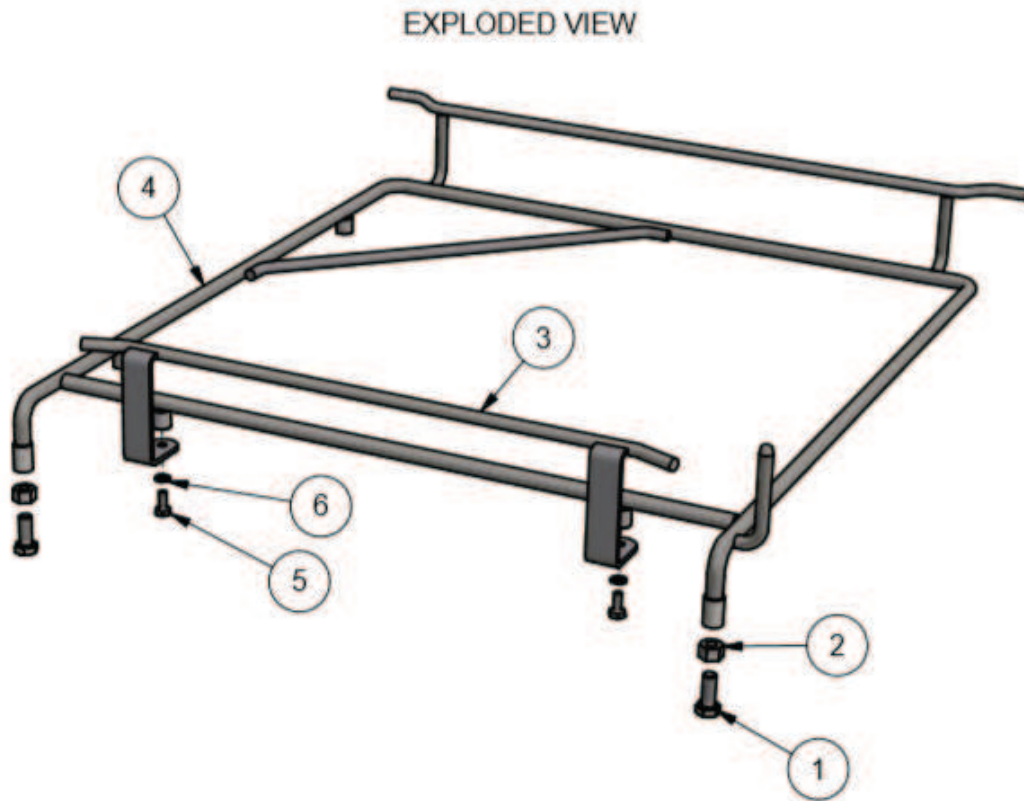


Parts List			
ITEM	PART NUMBER	DESCRIPTION	QTY
1	303 10007	XP-3 DOOR ASSY	1
2	600 80022	WASHER FL SS 304 M8x16x1.2mm	1
3	328 10012	M2(4) ASSY DOOR HANDLE	1
4	400 30225	PASSTHROUGH DOOR STAY MOUNT	1
5	600 80029	M8x12 HEX HD SET SCREW T304	1
6	400 10206	PASSTHROUGH DOOR STAY ASSY	1
7	600 80158	8mm TYPE A SEALING WASHER	1
8	600 80030	M8x20 HEX HD SET SCREW T304	1
9	1658	SPACER	1

Assembly Diagram

M2 RACKSLIDE ASSEMBLY

- Part #: 328 10026
- Date: 30/05/2016
- Version: 3-B

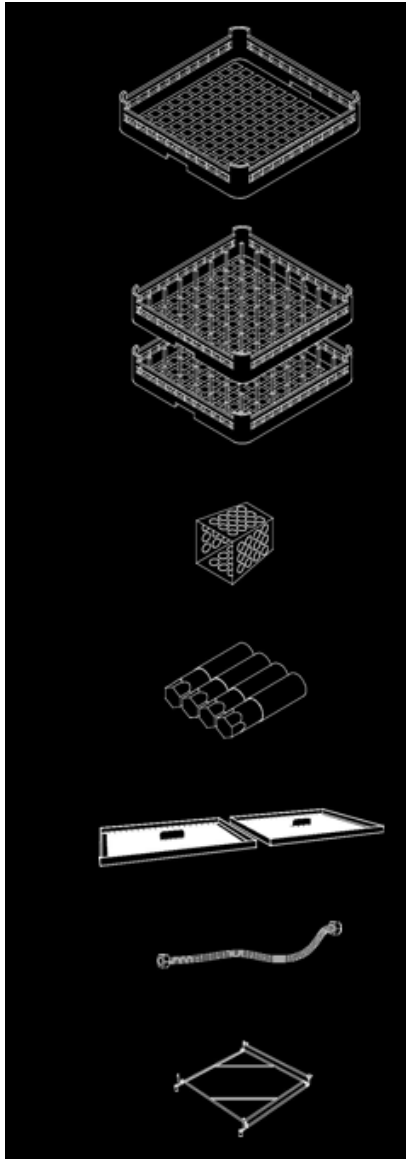


Parts List			
ITEM	PART NUMBER	DESCRIPTION	QTY
1	600 80030	M8x20 HEX HD SET SCREW T304	2
2	600 80063	NUT NYLOC SS M8	2
3	328 10008	RACK GUIDE ROD ASSEMBLY	1
4	328 10024	M2 RACKSLIDE SUB-ASSEMBLY	1
5	600 80135	M5 x 12 SS HEX HEAD BOLT	2
6	8567	WASHER SPRING SS 304 M5	2

Accessories

M2(4) Accessories

- Part #: XP3 ACW
- Date: 04/12/2018
- Version: 1-B



600 70029
CUPRACK 500mm X 75mm HIGH

600 70028
DISHRACK P12/18 500mm 18 DISH

C660503
CUTLERY CONTAINER G

600 90154
SS LEG (63D x 225-325mm x M12)

329 15002
XP SCRAP TRAY ASSEMBLY

600 90080
2M S/S HOSE

328 10026
M2 (4) RACK SLIDE ASSEMBLY

Information supplied in this manual is copyright.
No part of this work may be reproduced or
copied in any form or by any means, electronic or
mechanical without the express permission of
the author/publisher

Distributed in Australia by Moffat Pty Limited



740 Springvale
Road Mulgrave
3170 Victoria
Australia

ISO9001

All Washtech products are designed and
manufactured by Washtech using the
internationally recognised ISO9001 quality
management system, covering design,
manufacture and final inspection, ensuring
consistent high quality at all times.

In line with policy to continually develop and
improve its products, Washtech Ltd reserves the
right to change specifications and design
without prior notice.

an Ali Group Company



The Spirit of Excellence



SPARES
WEBSTORE

spares.moffat.com.au



1300 263 107



sparesinfo@moffat.com.au