

XP

Series 2

PASSTHROUGH DISHWASHER



Parts Manual

Spare Parts XP

DESCRIPTION	PART NO	REC. STOCK
Cabinet & Door		
Door Switch Magnet	600 30182	1
Spring Door 27 x 735 x 5	326 30019	1
Controls & Indicators		
Contact	600 30337	1
Auxiliary Contact	600 30339	1
Door Reed Switch	600 30183	1
Door Switch Relay	600 30223	1
Knob Selector Switch	600 30467	
Power Light	600 30161	1
Pressure Switch	600 30308	1
Ready Light	600 30162	1
Run Light	600 30163	1
Switch 4 position	600 30269	1
Terminal Strip 12 Way	3229	
Test Switch	3035	
Timer	32822	1
Temperature Gauge	600 90080	1
Heating Components		
Over Temperature Thermostat	600 30088	1
Rinse Element 6 KW	3007	1
Rinse Tank Assembly	400 10169	
Rinse Thermostat	3020	1
Wash Element 2.5 KW	600 30159	1
Wash Thermostat	30201	1
Hoses & Fittings		
Lower Wash Connection Hose	6196	100mm
Pressure Switch Hose	3067	300mm
Rinse Hose	600 60073	2000mm
Upper Wash Connection Hose	6196	100mm
Upper Wash Manifold	326 30020	
Wash Pump Inlet Hose	6194	100mm
Wash Pump Outlet Hose	6195	150mm

Spare Parts XP

DESCRIPTION	PART NO	REC.STOCK
Pumps & Solenoids		
Detergent Pump 1.5 L/H	600 30094	1
Detergent Pump Hose	600 30148	1
Detergent Squeeze Tube	600 30134	1
Dual Check Valve Assembly	400 10132	1
Rinse Aid Injector	600 30324	1
Solenoid Valve	3342	1
Wash Pump ZF 320V SX	600 30299	1
Wash Pump Capacitor 12.5 mF	3892	
Wash Tank Components		
Drain Upstand	400 10144	1
Rinse Nozzle Closed Head	600 40050	1
Rinse Nozzle Opened Head	600 40049	1
Rinse Nozzle O-Ring (OR R6 NBR)	600 40051	2
Scrap Tray	327 15001	1
Wash Nozzle Opened head	600 40015	1
Wash Nozzle O-Ring (OR 2050 NBR)	600 40048	1
Wash Pump Filter	326 20010	1
Wash / Rinse Arm Assembly	600 41148	
Wash / Rinse Spindle	400 30223	

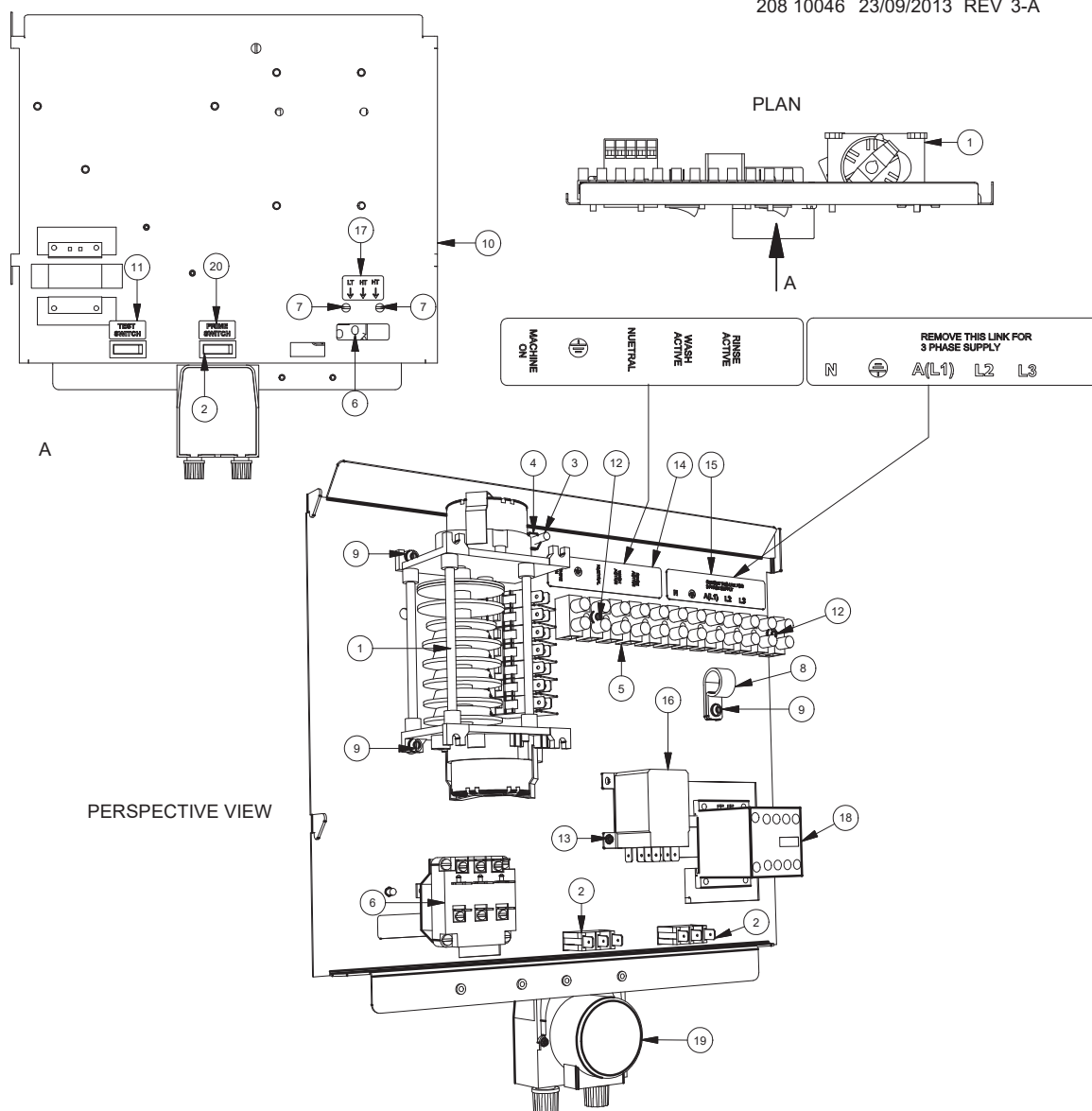
Note:

For more parts look in the section “Assembly Diagrams”.

Assembly Diagrams

XP WASHTECH WIRING TRAY ASSY

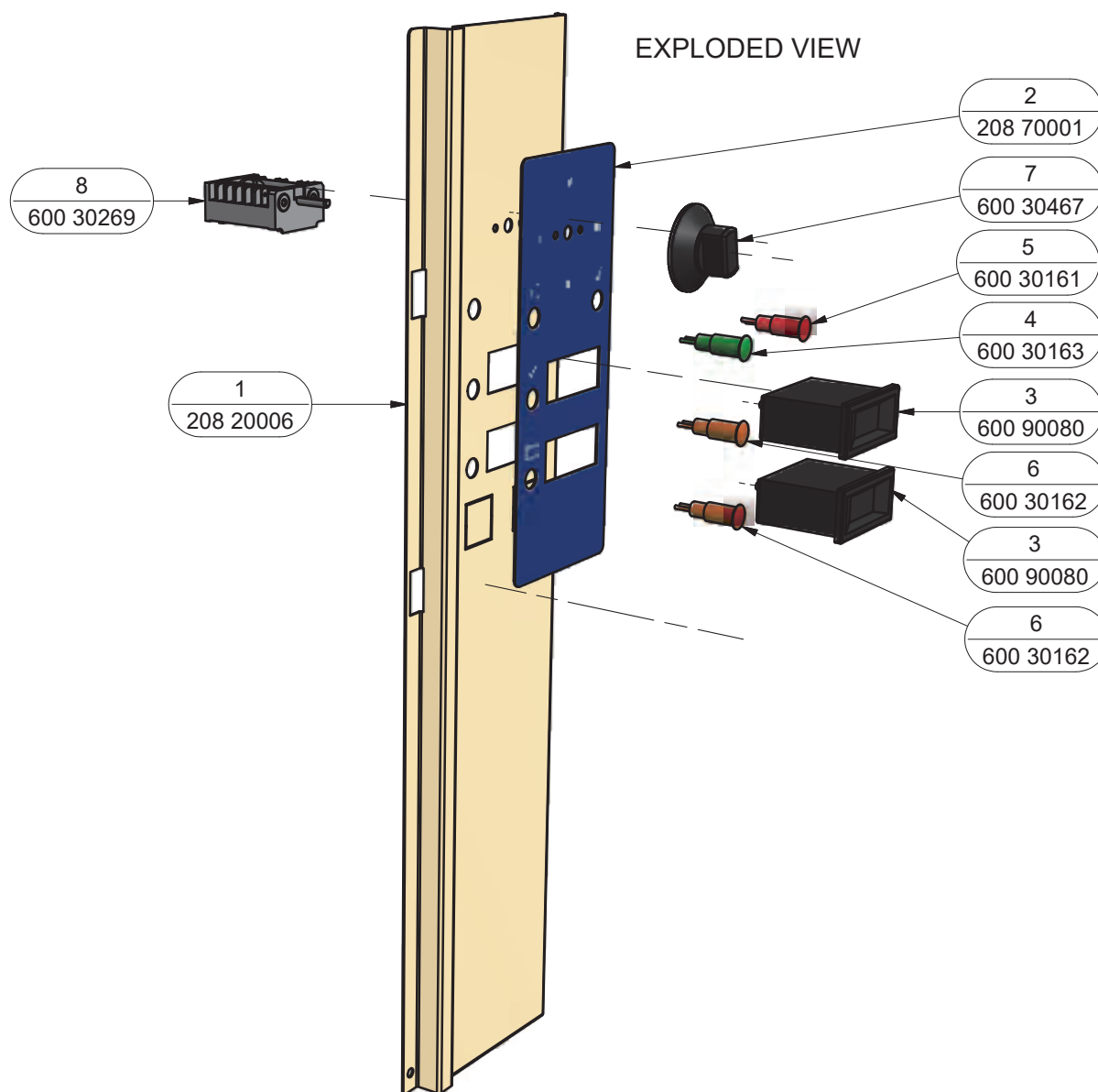
208 10046 23/09/2013 REV 3-A



Parts List				Parts List			
ITEM	PART NUMBER	DESCRIPTION	QTY	ITEM	PART NUMBER	DESCRIPTION	QTY
1	32822	TIMER4907DV(180/6 SEC)3 CYCLE	1	11	REF	LABEL TEST SWITCH	1
2	3035	SWITCH SINGLE POLE BIASED BLACK	2	12	8802	MS PAN POZI ZP M4x25	2
3	8816	MS RH BRASS 3/16 X 3/4	1	13	600 80052	MS RH ZP M3x6	2
4	8151	NUT HX BRASS 3/16" PRESSED	1	14	REF	CHEMICAL CONNECTIONS LABEL	1
5	3229	TERMINAL STRIP 12 WAY	1	15	REF	POWER CONNECTIONS LABEL	1
6	3020	3 POLE THERMOSTAT	1	16	600 30223	JQX-12F POWER RELAY	1
7	8800	MS PAN POZI ZP M4x6	2	17	Label	LABEL THERMOSTAT ADJUSTMENTS	1
8	600 30131	P CLIP 20.8mm	1	18	600 30337	CONTACTOR 20A 3NO/NC 230-240V	1
9	8801	MS PAN POZI ZP M4x12	5	19	600 30094-2	PERI PUMP 1.5L/H SEKO-KIT	1
10	326 10216	M2 (3) WIRING TRAY SUB ASSEMBLY	1	20	REF	LABEL PRIME SWITCH	1

XP CONTROL PANEL ASSY

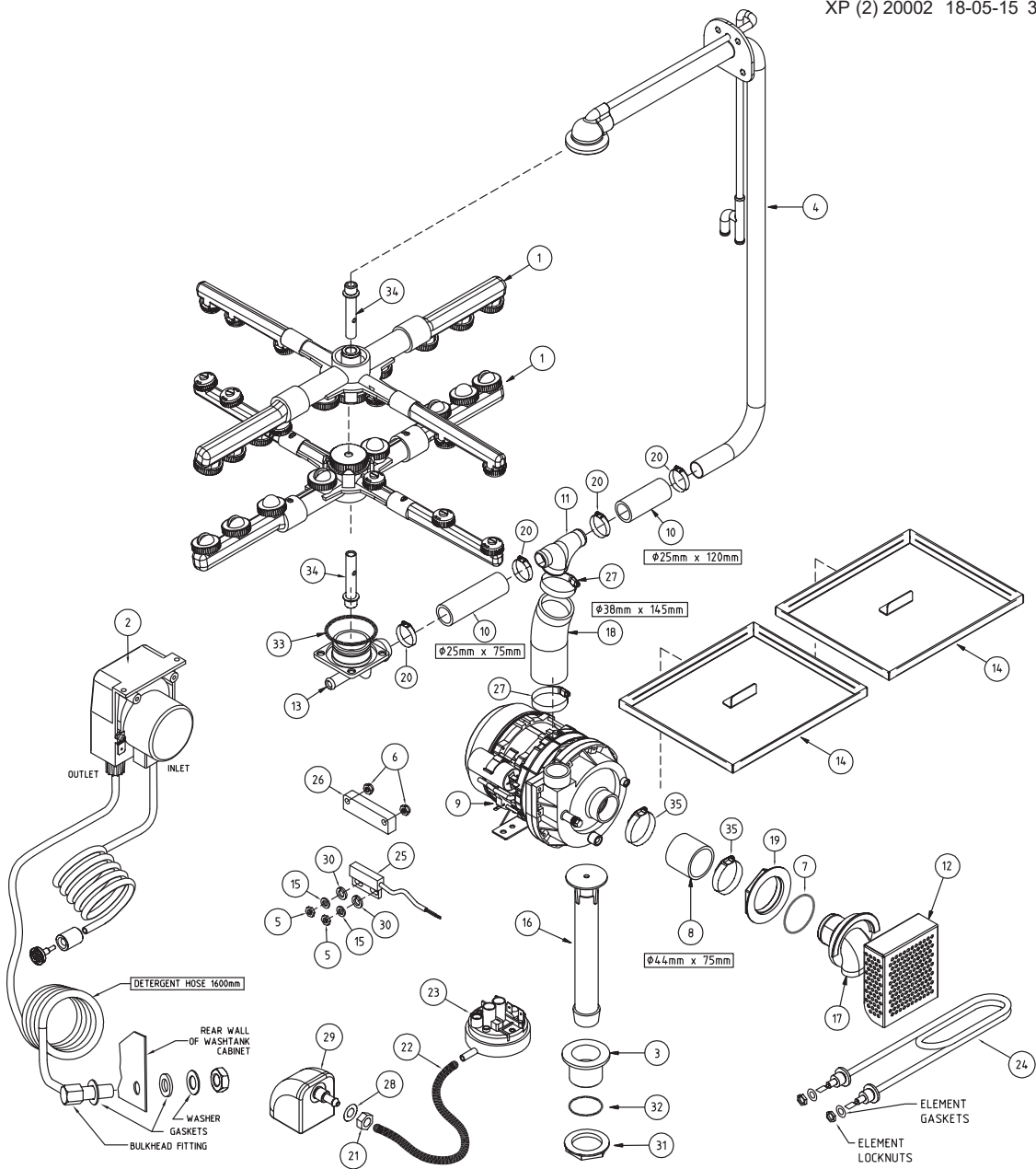
208 10045 26/09/2013 REV 3-A



Parts List			
ITEM	PART NUMBER	DESCRIPTION	QTY
1	208 20006	XP (3) CONTROL PANEL	1
2	208 70001	XP CONTROL LABEL	1
3	600 90080	TEMP GAUGE RECTANGULAR 58x25	2
4	600 30163	LENS & NEON ASSY (GREEN) 12mm	1
5	600 30161	LENS & NEON ASSY (RED) 12mm	1
6	600 30162	LENS & NEON ASSY (AMBER) 12mm	2
7	600 30467	KNOB SELECTOR SWITCH	1
8	600 30269	SWITCH 4 WAY QUICK CONNECT	1

XP WASH SYSTEM

XP (2) 20002 18-05-15 3D



ITEM	CODE	DESCRIPTION	QTY
1	600 41148	WASH/RINSE ARM	2
2	600 30094	PERI PUMP 15L/H SEKO-KIT	1
3	400 30042	WASTE DRAIN PLASTIC 40mm PLASTIC	1
4	329 10015	XP WASH MANIFOLD ASSEMBLY	1
5	8112	NUT HEX SS 304 M4	2
6	600 80079	NYLOC NUT M4 304	2
7	ARP331	O-RING ARP331	1
8	6194	HOSE 44mm 2 PLY RADIATOR HOSE	1
9	600 30299	PUMP WASH 1HP ZF 320V SX	1
10	6196	HOSE 25mm 2 PLY RADIATOR	2
11	400 90069	TEE 25/38MM REDUCER	1
12	326 20010	M2(3) WASH INLET FILTER	1
13	400 90078	WASH TEE CASTING	1
14	327 15001	XP (2) FILTER ASSEMBLY	2
15	8567	WASHER SPRING SS 304 MS	2
16	400 10144	277mm LONG UPSTAND 'K'	1
17	400 90114	M2 WASH PUMP INLET	1
18	6195	HOSE 38mm 2 PLY RADIATOR	1
19	400 90115	1 3/4" S/S BACKNUT	1

ITEM	CODE	DESCRIPTION	QTY
20	ASS16	HOSECLIP ASS16	4
21	600 80009	NUT SS 304 HEX M10	1
22	3067	HOSE PRESSURE SW VACUUM 4mm	1
23	600 30308	PRESSURE SWITCH METAFLEX 140/60mm	1
24	600 30159	ELEMENT WASH 2.5KW STRAIGHT	1
25	600 30183	REED SWITCH STEM	1
26	600 30182	MAGNETIC UNIT	1
27	ASS24	ASS24 HOSE CLIP	2
28	ARP205	O RING 205	1
29	400 90135	SQUARE PRESSURE BELL CASTING	1
30	600 80081	M4 WASHER 304	2
31	6037	BACKNUT 126x40mm	1
32	1896	DRAIN WASTE GASKET	1
33	ARP328	O-RING	1
34	400 30223	WASH & RINSE SPINDLE	2
35	ASS28	ASS28 HOSECLIP	2

Wash Pump

Part Number

600 30299

Function

Pumps water from the wash tank to the wash arms providing a recirculating wash cycle.

Description

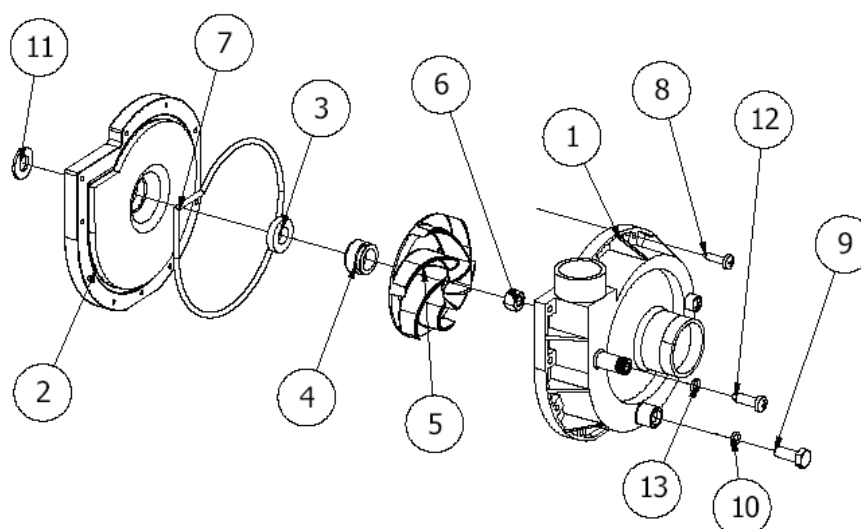
Electric Pump ZF 320V SX

Power: HP 0.93 Kw 0.68
Voltage: 230 V 50Hz
Amperes: 3.0 A
Capacitor: 12.5 uF

Speed 2800 rpm
Protection: IP 20
Hm Min: 1.0 m
Hm Max: 12.3 m

Diagram

Hydraulic parts



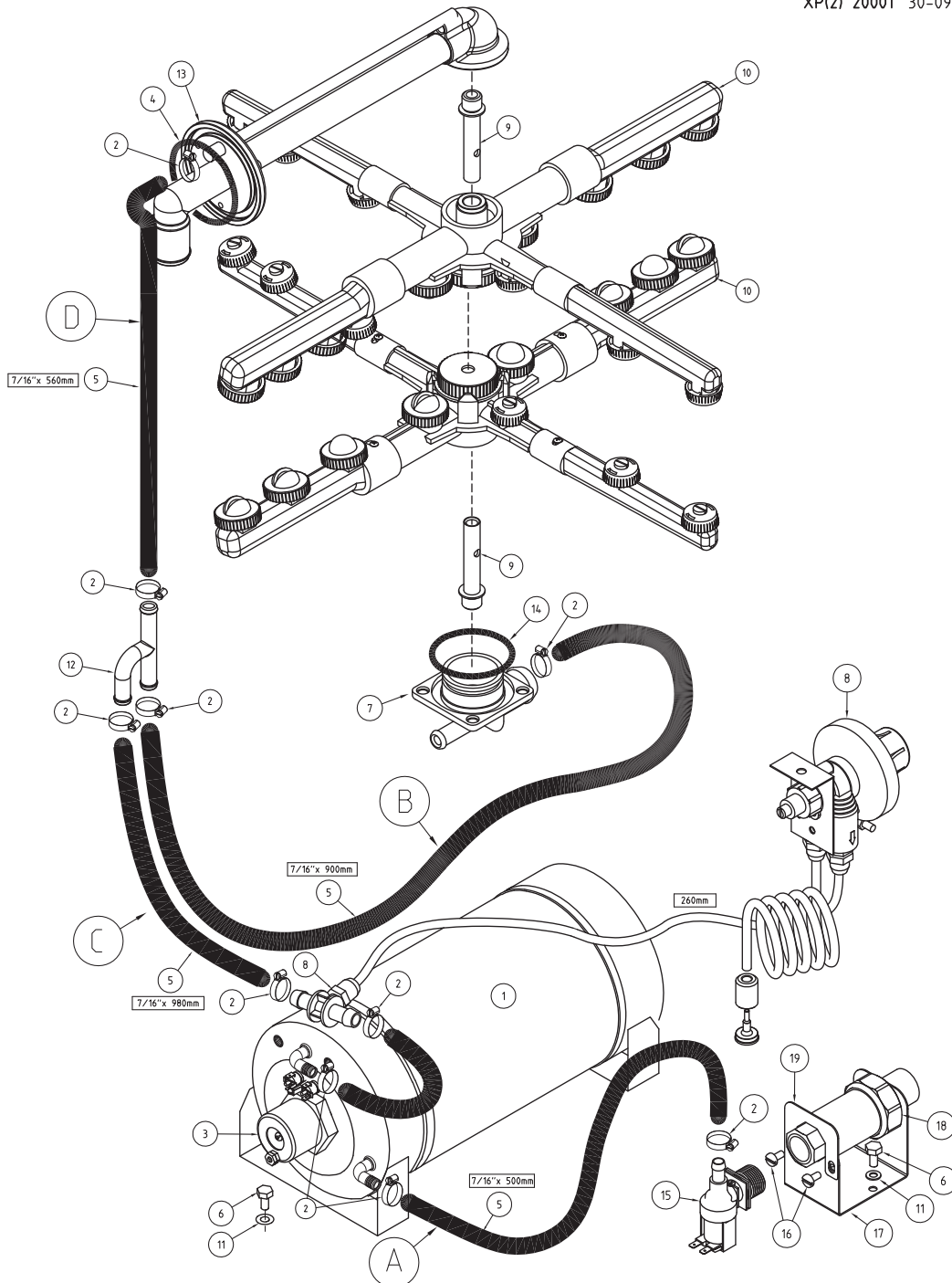
ITEM	DESCRIPTION	PART #	ITEM	DESCRIPTION	PART #
1	Volute	600 41116	7	O-ring	600 41113
2	Pump flange	600 41117	8	Screw	-
3	Fixed seal	600 41110	9	Plug screw	-
4	Rotating seal	600 41111	10	O-ring plug	-
5	Impeller	600 41115	12	Screw hose connector	-
6	Nut	600 41112	13	O-ring hose connector	-

Replacement

Drain the wash tank and switch off the power.
Disconnect the wires from the pump connectors and the pump capacitor. .
Release the hose clamps on the inlet and outlet pump hoses and remove the pump.
Replace in reverse order.

WASHTECH XP(2) RINSE SYSTEM

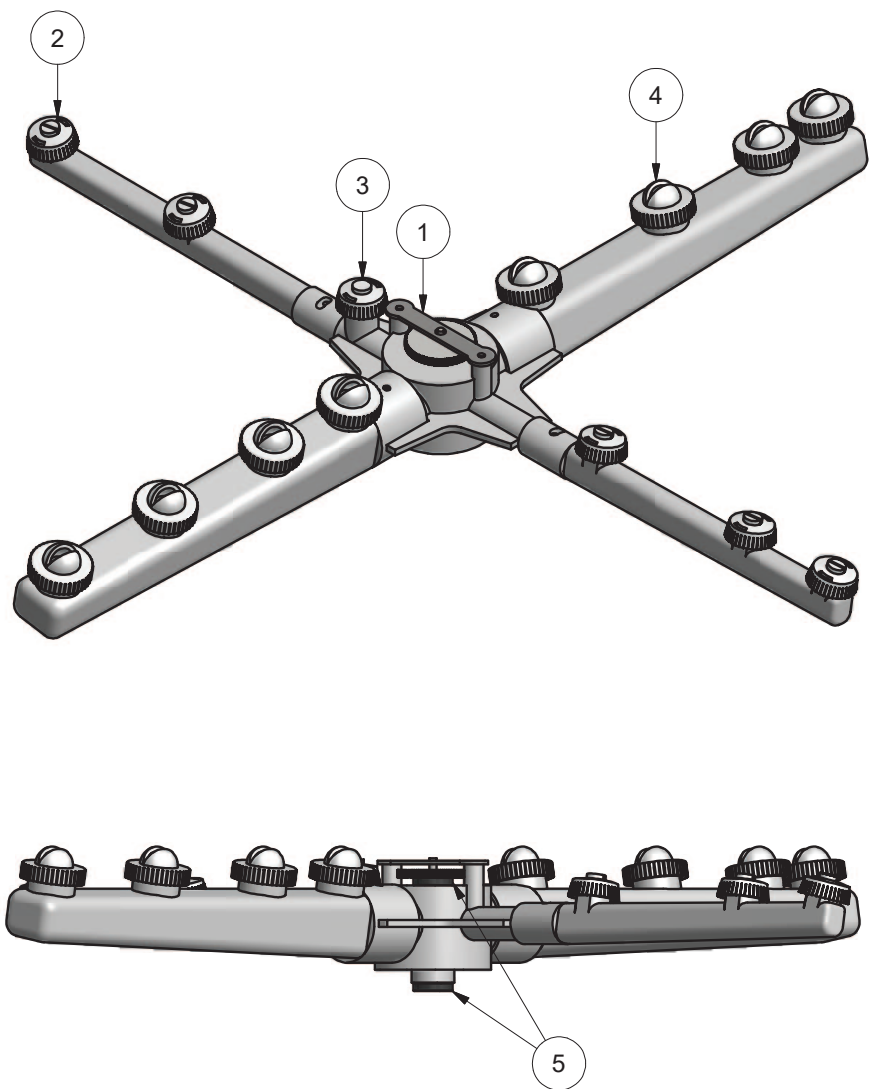
XP(2) 20001 30-09-13 3 C



ITEM	CODE	DESCRIPTION	QTY	ITEM	CODE	DESCRIPTION	QTY
1	400 10169	RINSE TANK ASSY 6kW 2 THERMOSTATS	1	11	8566	WASHER SPRING SS 304 M6	2
2	ASS6	HOSECLIP ASS6	10	12	600 60230	SS RINSE TEE	1
3	3007	6KW RINSE ELEMENT	1	13	326 10040	M2(3) UPPER MANIFOLD ASSY	1
4	ARP336	O-RING	1	14	ARP333	O-RING	1
5	600 60073	HOTOTAL HOSE 11mm X 19mm	2.8m	15	3342	SOLENOID VALVE GL 1 WAY 90°	1
6	884.61	MS HX SS 304 M6 X 12	2	16	8800	MS PAN POZI ZP M4 x 6	2
7	400 90078	WASH TEE CASTING	1	17	400 20107	DCV BOTTOM BRACKET	1
8	600 30324	RINSE AID KIT	1	18	400 20107	DUAL CHECK VALVE ASSY	1
9	400 30223	WASH & RINSE SPINDLE	2	19	400 20108	BRACKET DCV CLAMP	1
10	600 41148	WASH/RINSE ARM	2	20	3007	6KW RINSE ELEMENT	1

WASH/RINSE ARM ASSEMBLY

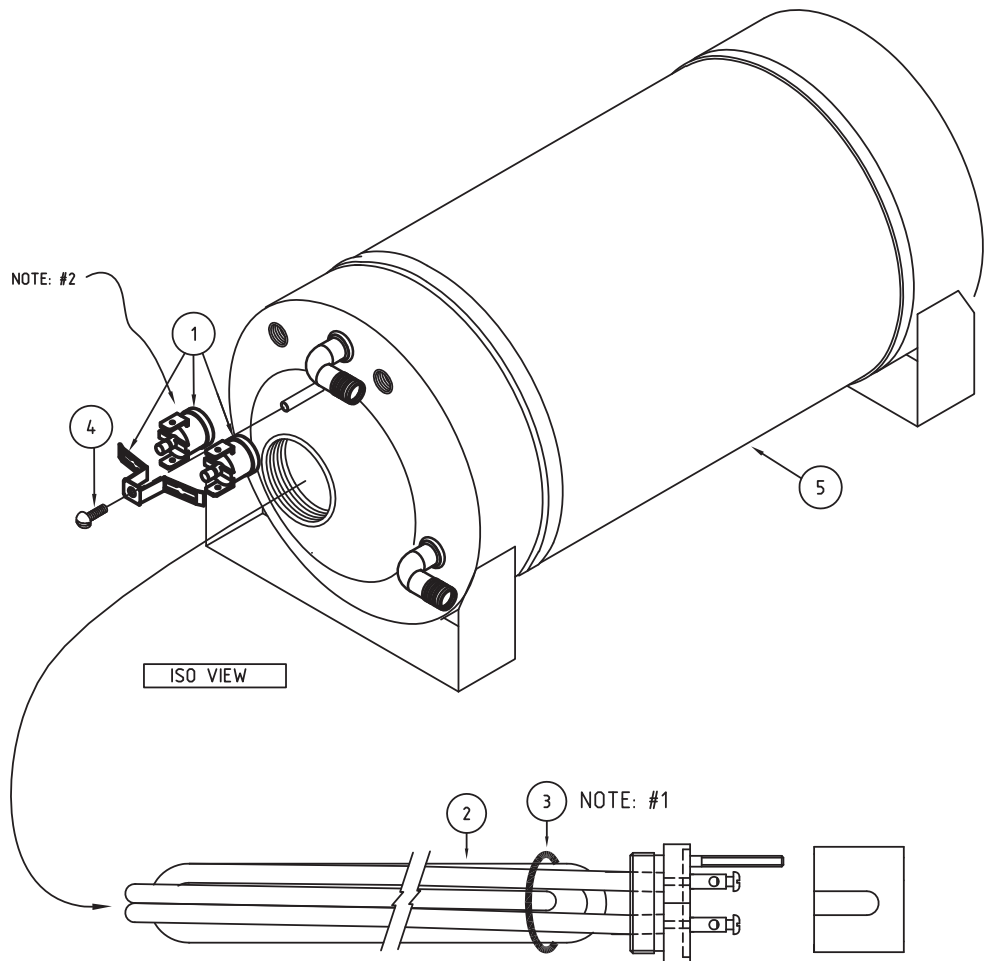
600 41148 20/04/2015 REV 1-C



Parts List			
ITEM	PART NUMBER	DESCRIPTION	QTY
1	600 41191	THUMB SCREW RETAINING PLATE	1
2	600 40049	JET GM5 RINSE	5
3	600 40050	JET GM5 BLIND RINSE	1
4	600 40046	JET GM5 WASH	8
5	600 40064	WASH/RINSE ARM BUSH	2

XP/W 6KW ASSY R/TANK 1/2" 2 THERMOSTATS

400 10169 11-07-13 1 A



ITEM	CODE	DESCRIPTION	QTY
1	600 30088	THERMOSTAT TY60/R-95C [with E brkt]	2
2	3007	ELEMENT 6kW RINSE	1
3	3006	GASKET ELEMENT 54.0:1.6mm	1
4	600 80052	MS PAN SLOT ZP M3X6.	1
5	400 10114	RINSE TANK NEW SUB ASSY 1/2"	1

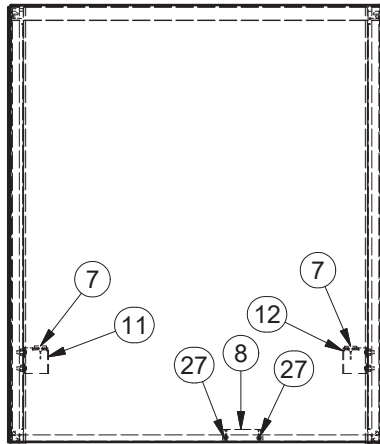
NOTE: 1. USE GRAPHITE JOINING COMPOUND ON BOTH SIDES OF GASKET BEFORE INSERTING ONTO ELEMENT.

NOTE: 2. USE HEAT TRANSFER COMPOUND UNDER THERMOSTAT HEAD.

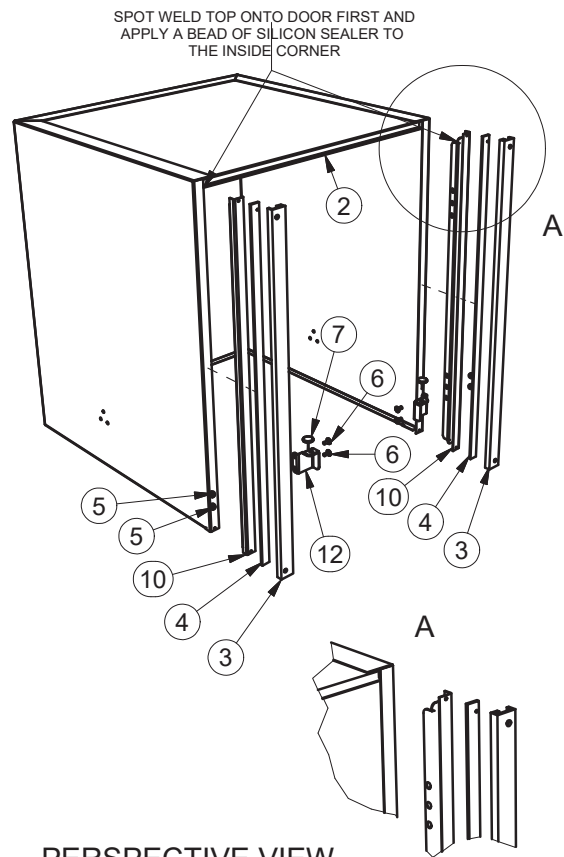
M2 (3) PASS-THROUGH DOOR ASSY

326 10007 9/02/2010 REV 3-H

FRONT VIEW

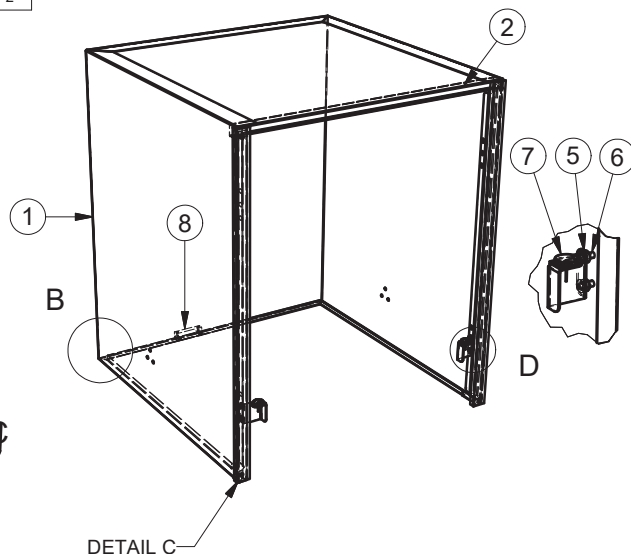
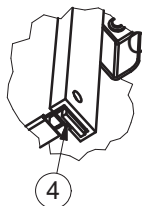
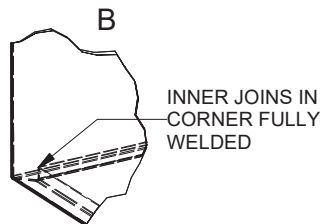


EXPLODED PERSPECTIVE VIEW



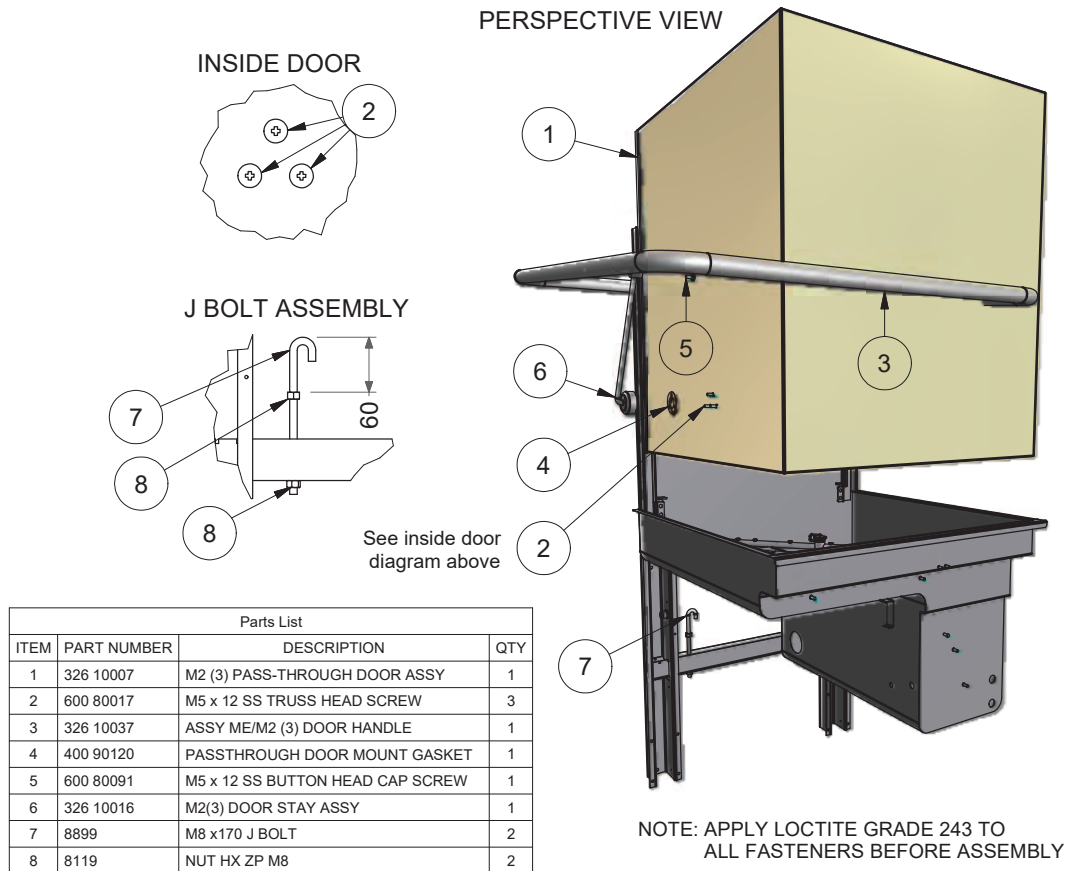
PERSPECTIVE VIEW

Parts List			
ITEM	PART NU	DESCRIPTION	QTY
1	326 20025	M2 (3) DOOR	1
2	326 20024	M2(3) DOOR UPPER INFILL	1
3	326 30004	M2 DOOR SLIDE	2
4	326 20007	M2(3) DOOR STRIP SPACER	2
5	600 80016	HANK BUSH 304 SS M5	4
6	600 80017	M5 x 12 SS TRUSS HEAD SCREW	4
7	1825	ANTI RATTLE BUTTON	2
8	600 30182	MAGNET	1
10	351 20074	AL(3) DOOR BACK RAIL SUPPORT	2
11	301 20009	M1(3) DOOR STOP BRACKET (LH)	1
12	301 20035	M1(3) DOOR STOP (RH)	1
27	600 80059	SCREW 6g 12mm T304 SS SELF TAP	2



M2 (3) DOOR LINK & J BOLT ASSY

326 10010 4/03/2011 REV 3-D



INSTRUCTIONS FOR DOOR SPRING REPLACEMENT

Hazard Warning - service work to be carried out only by qualified persons. Ensure machine is isolated from Electrical Supply.

When replacing a broken door spring it is advisable that if possible the machine is disconnected from the services and moved out so work can be carried out from the back of the machine.

Begin with the door in the down position and remove Item 5 M5 x 12 SS BUTTON HEAD CAPSCREW from the handle at both sides of the door. Whilst holding the door handle down, remove item 6 M2(3) DOOR STAY ASSY from the door handle at both sides of the door and then allow the door handle to rise to a vertical position.

NOTE:- IT IS IMPORTANT THAT THE DOOR HANDLE IS HELD DOWN WHEN CARRYING OUT THE ABOVE STEPS AS RELEASING IT TOO SOON MAY CAUSE IT TO SWING UPWARDS IN AN UNCONTROLLED MANNER, CAUSING INJURY.

Move to the back of the machine and remove any parts of broken spring and check the J bolt and the spring hanger bracket for signs of wear. If the spring hanger brkt is badly worn please refer to Technical Bulletin TB 9011 for the fitting of retrofit spring hanger brackets.

Hook the new spring in place on the J bolt and pull it up to hook onto the spring hanger brkt welded on the handle. If this is not possible the lower nut holding the J bolt in place should be unscrewed until the spring can be attached and then the lower nut should be tightened up to its original position.

Once the new spring is fitted the handle can be lowered so that the door stays can be refitted and the cap screws fitted and tightened up. The cap screws should have loctite or similar applied to them before fitting.

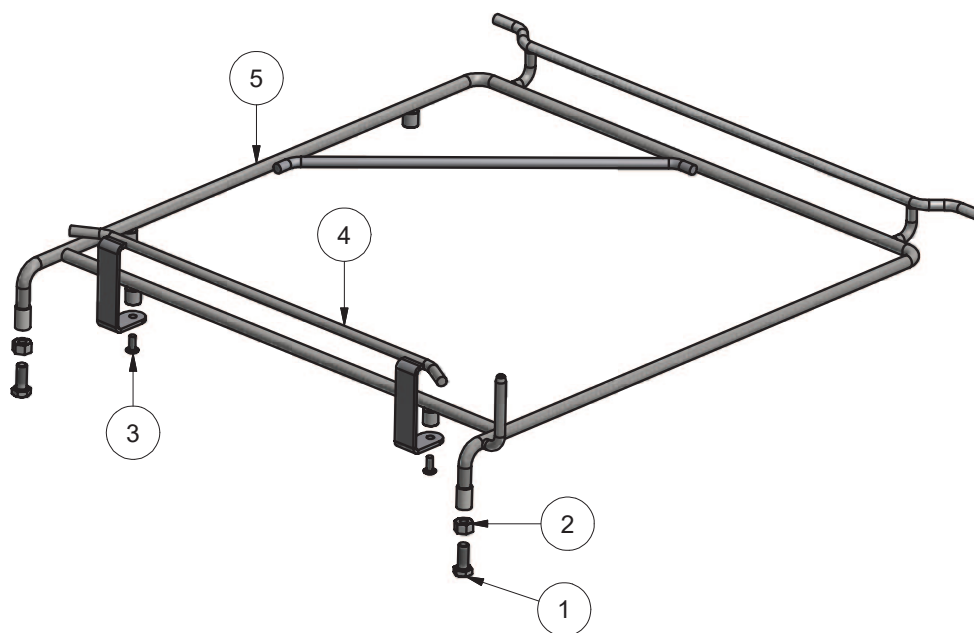
The door springs should be adjusted so that they hold the door against the door stops in the up position and the door does not lift by itself when in the down position.

If the machine cannot be moved out, the front panel must be removed and the lower nut on the J bolt accessed from the front of the machine. It will be necessary to immobilise the J bolt using vice grips clamped onto it to prevent it turning when adjusting the lower nut. The upper nuts should not be moved if at all possible.

XP RACKSLIDE ASSEMBLY

329 10026 19/09/2014 REV 3-A

EXPLODED VIEW

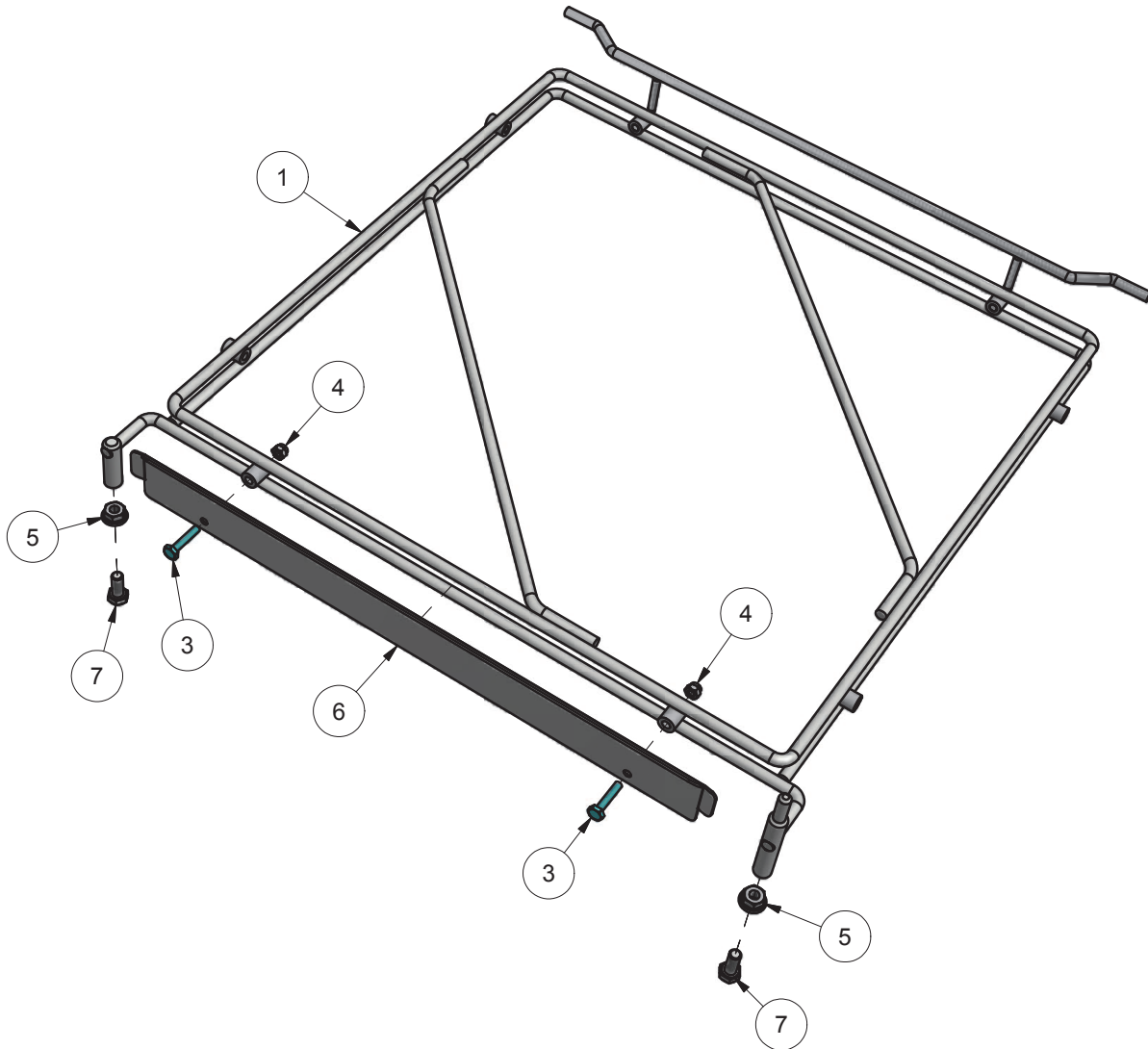


Parts List			
ITEM	PART NUMBER	DESCRIPTION	QTY
1	600 80030	M8x20mm Hex-Head Bolt	2
2	600 80063	NUT NYLOC SS M8	2
3	600 80017	M5 x 12 SS TRUSS HEAD SCREW	2
4	328 10008	M2 RACK GUIDE ROD ASSEMBLY	1
5	329 10025	XP RACKSLIDE SUB-ASSEMBLY	1

M2 \ XP RACKSLIDE ASSY

326 10011 16/09/2013 REV 3-D

PERSPECTIVE VIEW

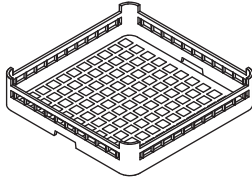


Parts List			
ITEM	PART NUMBER	DESCRIPTION	QTY
1	326 10012	M2(3) RACK SLIDE SUB ASSY MK2	1
3	600 80094	M5 x 25 SS HEX HD SETsCREW	2
4	600 80060	NUT NYLOC M5 S/S	2
5	600 80023	NUT SS 304 HEX M8	2
6	351 20060	AL RACK SLIDE GUIDE	1
7	600 80030	M8x20mm Hex-Head Bolt	2

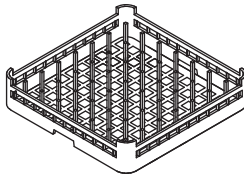
Accessories

XP W ACCESSORIES

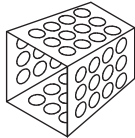
XP ACW 23-09-13 1A



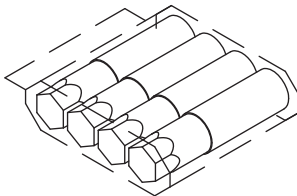
600 70029
CUPRACK CB 500mm X 75mm high



600 70028
DISHRACK P12/18 500mm 18 DISH



C660503
CUTLERY CONTAINER G



7026@
BAG MINIGRIP 230 x 305 x 70mu

600 90023
ASSY SL/M1/M2 LEG (INOX 50x240xM12)



600 90080
2M S/S HOSE

Information supplied in this manual is copyright. No part of this work may be reproduced or copied in any form or by any means, electronic or mechanical without the express permission of the author / publisher.



Distributed In
Australia by

740 Springvale Road, Mulgrave 3170, Victoria

