

**XP**

**Series 1**

PASSTHROUGH DISHWASHER



# Parts Manual

# Spare Parts

---

DESCRIPTION	PART NO
<b>Cabinet &amp; Door</b>	
Control Panel Sub-Assembly	327 20031
Control Panel Label	327 70001
Door Switch Magnet	600 30182
Spring Door 27 x 735 x 5	326 30019
<b>Controls &amp; Indicators</b>	
Contactor	600 30229
Door Reed Switch	600 30183
Door Switch Relay	600 30223
Power Light	600 30161
Power Switch	600 30214
Pressure Switch	600 30308
Ready Light	600 30162
Run Light	600 30163
Terminal Strip 12 Way	3229
Test Switch	3035
Timer	32661 001
<b>Heating Components</b>	
Over Temperature Thermostat	600 30088
Rinse Element 5 KW	3005
Rinse Tank Assembly	400 10116
Rinse Thermostat	3020
Wash Element 2.5 KW	600 30159
Wash Thermostat	30201
<b>Hoses &amp; Fittings</b>	
Lower Wash Connection Hose (75 mm long)	6196
Pressure Switch Hose (specify length)	3067
Rinse Hose (specify length)	600 60073
Rinse Tee SS	400 90076
Upper Wash Connection Hose (75 mm long)	6196
Upper Wash Hose (400 mm long)	61931
Wash Pump Inlet Hose (75 mm long)	6194
Wash Pump Outlet Hose (145 mm long)	6195

# Spare Parts

---

DESCRIPTION	PART NO
<b>Pumps &amp; Solenoids</b>	
Dual Check Valve Assembly	400 10132
Solenoid Valve	3342
Wash Pump FIR	3904
Wash Pump ZF 320V SX	600 30299
Wash Pump Capacitor 12.5 mF	3892
<b>Wash Tank Components</b>	
Drain Upstand	400 10144
Nut M2 Wash Spindle	400 30074
Pressure Bell	400 90135
Rinse Arm	260 10097
Rinse Arm Bush	C190624
Rinse Arm End Plug	400 30200
Rinse Arm Jet	600 20001
Rinse Arm Spindle	400 30073
Scrap Tray	326 12003
Slip Ring White Acetal	400 30189
Wash Arm	326 10030
Wash Arm Bush	C190624
Wash Pump Inlet Filter	326 20010
Wash Arm End Screw Plug	600 80072
Wash Arm Securing Nut	400 30074
Wash Arm Spindle	400 30072

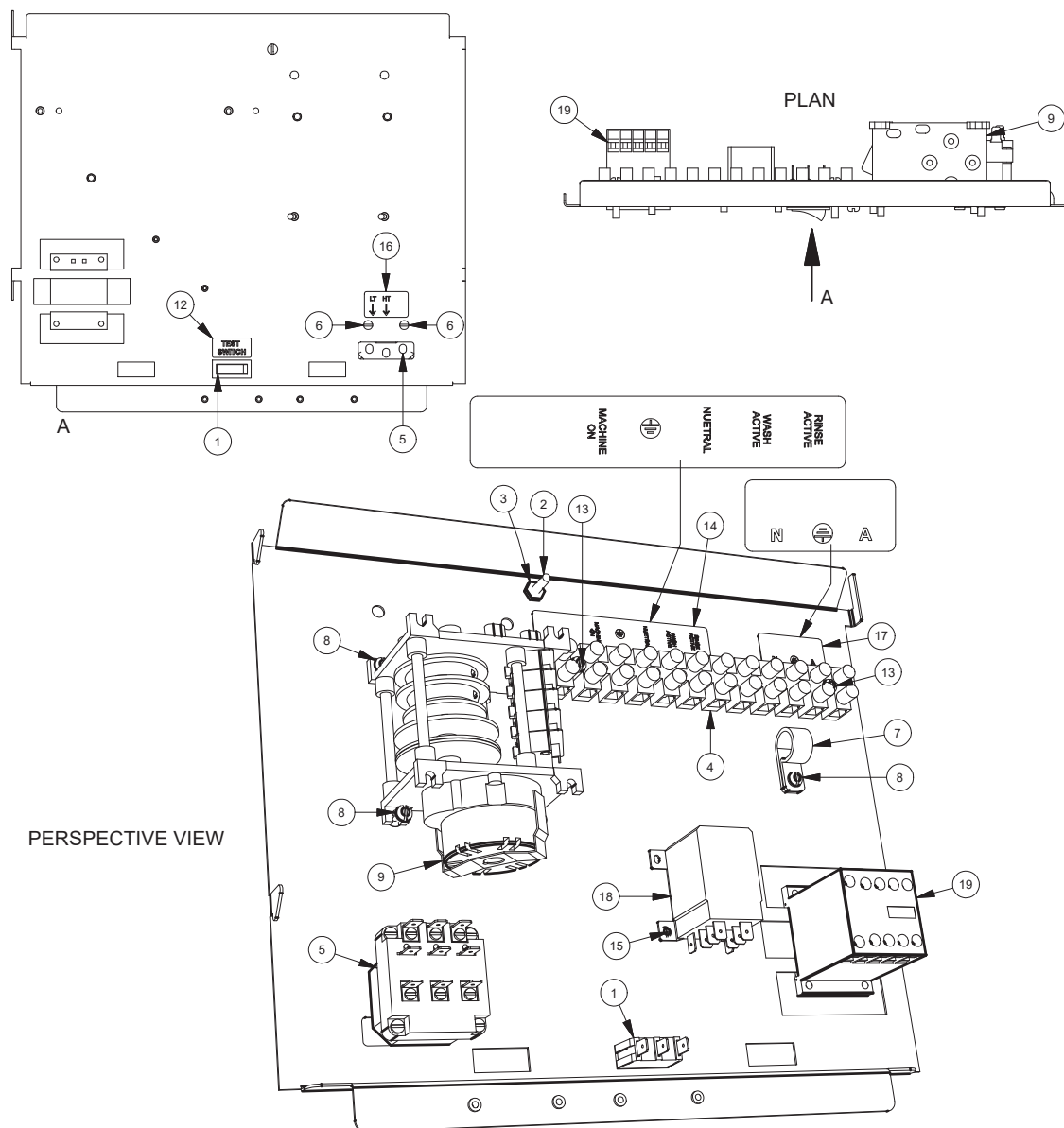
**Note:**

For more parts look in the section “Assembly Diagrams”.

# Assembly Diagrams

## XP/ME (3) WASHTECH WIRING TRAY ASSY

327 10221 3/10/2011 REV 3-F

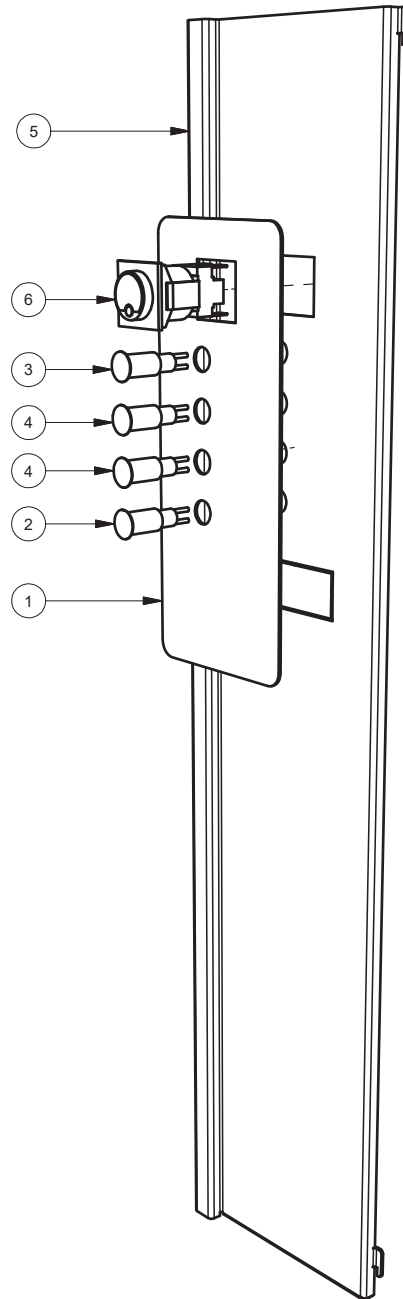


Parts List			
ITEM	PART NUMBER	DESCRIPTION	QTY
1	3035	SWITCH SINGLE POLE BIASED BLACK	1
2	8816	MS RH BRASS 3/16 X 3/4	1
3	8151	NUT HX BRASS 3/16" PRESSED	1
4	3229	TERMINAL STRIP 12 WAY	1
5	3020	3 POLE THERMOSTAT	1
6	8800	MS PAN POZI ZP M4x6	2
7	600 30131	P CLIP 20.8mm	1
8	8801	MS PAN POZI ZP M4x12	5
9	32661 001	TIMER 120sec 5 CAM	1
10	327 10216	ME (3) WIRING TRAY SUB ASSEMBLY	1
19	600 30337	CONTACTOR 20A 3NO/NC 230-240V	1

Parts List			
ITEM	PART NUMBER	DESCRIPTION	QTY
12	REF	LABEL TEST SWITCH	1
13	8802	MS PAN POZI ZP M4x25	2
14	REF	CHEMICAL CONNECTIONS LABEL	1
15	600 80052	MS RH ZP M3x6	2
16	REF	LABEL THERMOSTAT ADJUSTMENT	1
17	label ME	POWER CONNECTIONS LABEL	1
18	600 30223	JQX-12F POWER RELAY	1
19	600 30337	CONTACTOR 20A 3NO/NC 230-240V	1

# XP/ME (3) CONTROL PANEL ASSEMBLY

327 10017 21/10/2005 REV 3-A

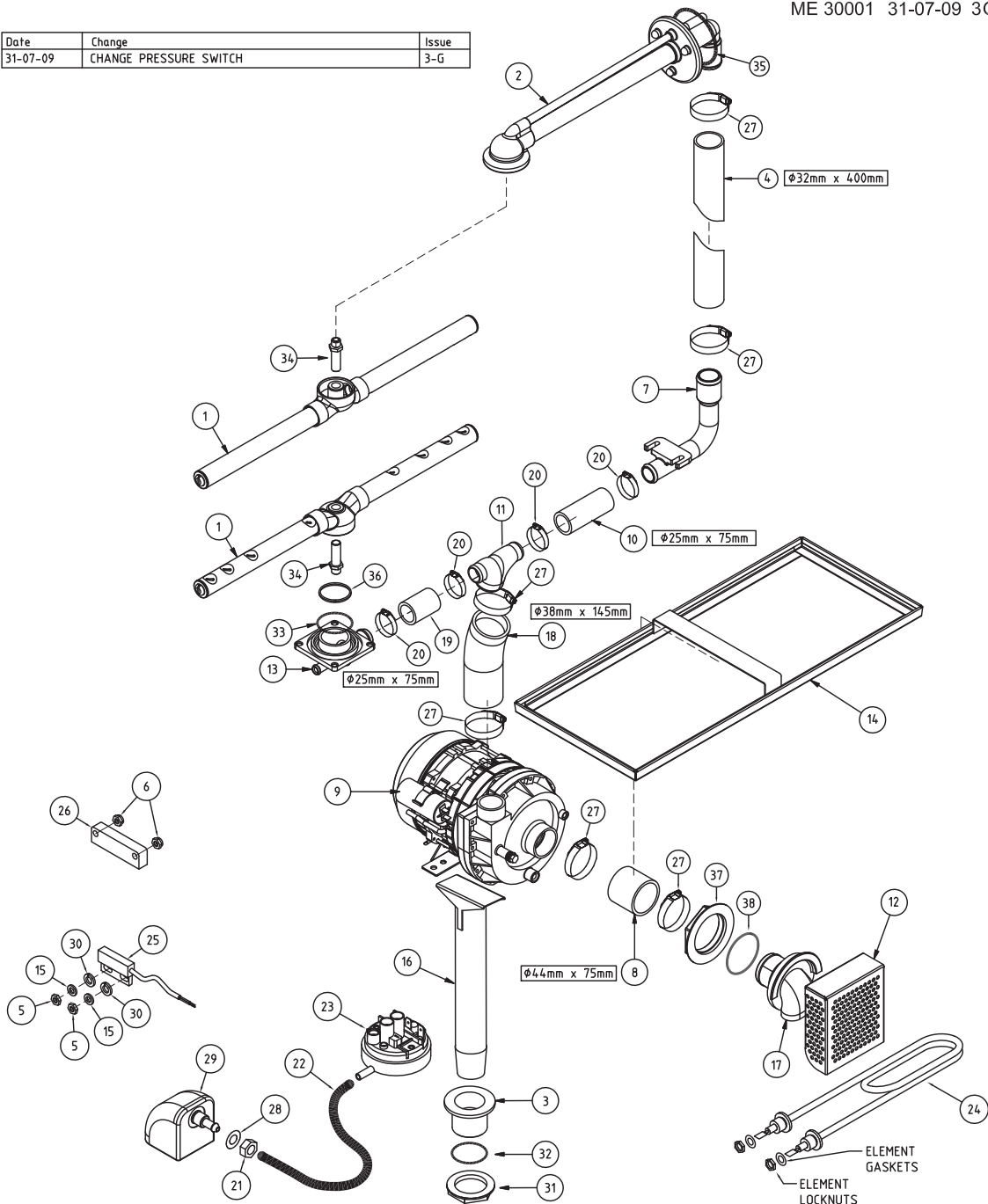


Parts List			
ITEM	PART NUMBER	DESCRIPTION	QTY
1	327 70001	LABEL ME/M1(3) THROUGH CONTROL PANEL	1
2	600 30161	LENS & NEON ASSY (RED) 12mm	1
3	600 30163	LENS & NEON ASSY (GREEN) 12mm	1
4	600 30162	LENS & NEON ASSY (AMBER) 12mm	2
5	327 20031	ME/M1(3) CONTROL PANEL	1
6	600 30214	SWITCH POWER 2P NO/NO LATCHED	1

# XP / ME (3) WASH SYSTEM

ME 30001 31-07-09 3G

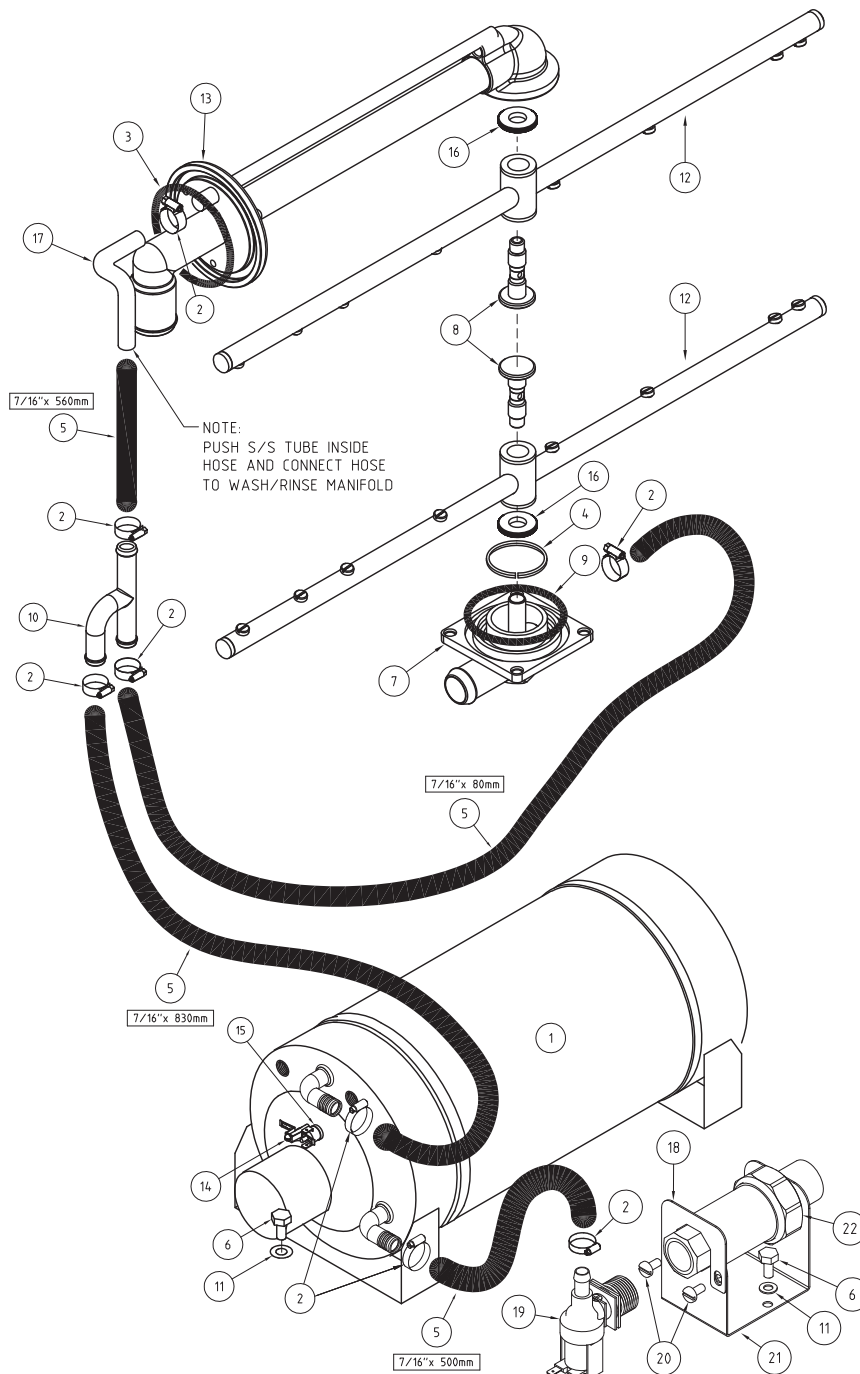
Date	Change	Issue
31-07-09	CHANGE PRESSURE SWITCH	3-G



ITEM	CODE	DESCRIPTION	QTY	ITEM	CODE	DESCRIPTION	QTY
1	326 10030	M2(3) WASH ARM ASSEMBLY	2	20	ASS24	HOSECLIP ASS24	2
2	326 10040	M2(3) UPPER MANIFOLD ASSY	1	21	600 80009	NUT SS 304 HEX M10	1
3	400 30042	WASTE DRAIN PLASTIC 40mm PLASTIC	1	22	3067	HOSE PRESSURE SW VACUUM 4mm	1
4	61931	HOSE 32mm 2 PLY RADIATOR HOSE	1	23	600 30308	PRESSURE SWITCH METAFLEX 140/60mm	1
5	8112	NUT HEX SS 304 M4	2	24	600 30159	ELEMENT WASH 2.5KW STRAIGHT	1
6	600 80079	NYLOC NUT M4 304	2	25	600 30183	REED SWITCH STEM	1
7	400 90108	25mm DIA 90 DEG ELBOW	1	26	600 30182	MAGNETIC UNIT	1
8	6194	HOSE 44mm 2 PLY RADIATOR HOSE	1	27	ASS36	ASS36 HOSE CLIP	2
9	600 30299	PUMP WASH 1HP ZF 320V SX	1	28	ARP205	O RING 205	1
10	6196	HOSE 25mm 2 PLY RADIATOR	1	29	400 90135	SQUARE PRESSURE BELL CASTING	1
11	400 90069	TEE 25/38MM REDUCER	2	30	600 80081	M4 WASHER 304	2
12	326 20010	M2(3) WASH INLET FILTER	2	31	6037	BACKNUT 126x40mm	1
13	400 90077	GLV WASH TEE	2	32	1896	DRAIN WASTE GASKET	1
14	326 12003	M2(3) SCRAP TRAY ASSEMBLY	2	33	ARP333	O-RING	1
15	8567	WASHER SPRING SS 304 MS	2	34	400 30072	SPINDLE M2 WASH	1
16	326 10118	M2(3) UPSTAND ASSEMBLY	1	35	ARP336	O-RING ARP336	1
17	400 90114	M2 WASH PUMP INLET	1	36	400 30189	SLIP RING WHITE ACETAL	1
18	6195	HOSE 38mm 2 PLY RADIATOR	1	37	400 90115	1 3/4\" S/S BACKNUT	1
19	6196	HOSE 25mm 2 PLY RADIATOR	1	38	ARP331	O-RING ARP331	1

# RINSE SYSTEM XP/ME (3) WASHTECH

ME 30002 11-08-10 3 F



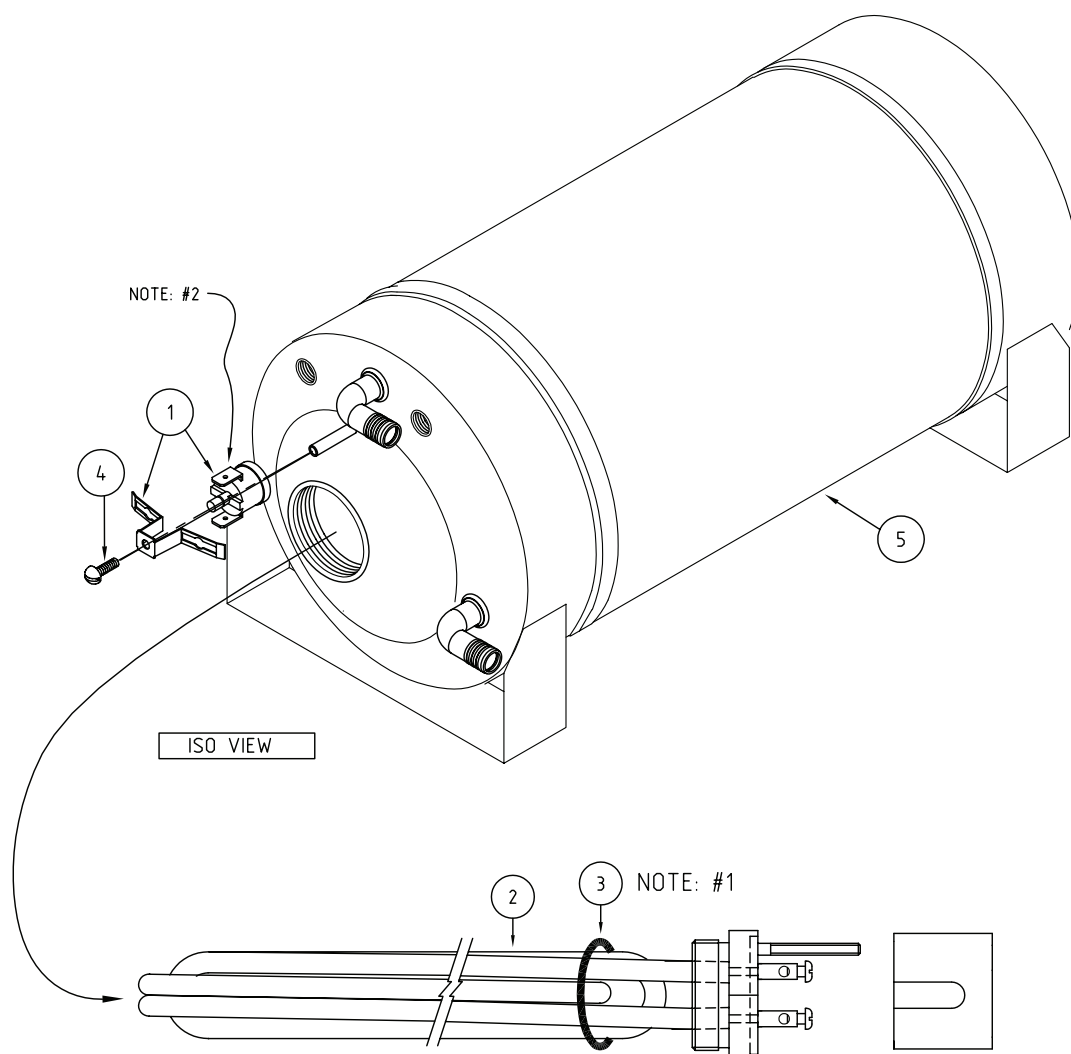
Date	Change	Issue
08-12-06	CHANGE DCV ASSY	3-E
11-8-10	CHANGE RINSE ARMS	3-F

ITEM	CODE	DESCRIPTION	QTY
1	400 10116	5 KW ASSY R/TANK 1/2" 1 THERMOSTAT	1
2	ASS6	HOSECLIP ASS6	8
3	ARP336	O-RING	1
4	400 30189	SLIP RING WHITE ACETAL	1
5	600 60073	HOTOTAL HOSE 11mm X 19mm	5m
6	88461	MS HX SS 304 M6 X 12	2
7	251 10031	WASH TEE ASSY UPPER/LOWER GLV/UD	1
8	400 30073	SPINDLE M2 RINSE	2
9	ARP333	O-RING	1
10	400 90076	SS RINSE TEE	1
11	8566	WASHER SPRING SS 304 M6	2
12	260 10097	UD-PW1 RINSE ARM ASSY	2

ITEM	CODE	DESCRIPTION	QTY
13	326 10040	M2 UPPER WASH/RINSE MANIFOLD ASSY	1
14	600 80052	MS PAN POZI ZP M3x6	1
15	600 30088	TSTAT TY60/R-95C (with E BRKT)	1
16	400 30074	NUT M2 WASH SPINDLE	2
17	326 31011	M2 UPPER RINSE TUBE	1
18	400 20108	BRACKET DCV CLAMP	1
19	3342	SOLENOID VALVE GL 1 WAY 90°	1
20	8800	MS PAN POZI ZP M4 X 6	2
21	400 20107	DCV BOTTOM BRACKET	1
22	400 10132	DUAL CHECK VALVE ASSY	1

# 5 KW ASSY R/TANK 1/2" 1 THERMOSTAT

400 10116 02-11-05 1A



ITEM	CODE	DESCRIPTION	QTY
1	600 30088	THERMOSTAT TY60/R-95C [with E bracket]	1
2	3005	ELEMENT 5kw RINSE	1
3	3006	GASKET ELEMENT 54.0:1.6mm	1
4	600 80052	MS PAN SLOT ZP M3X6.	1
5	400 10114	RINSE TANK NEW SUB ASSY 1/2"	1

NOTE: 1. USE GRAPHITE JOINING COMPOUND ON BOTH SIDES OF GASKET BEFORE INSERTING ONTO ELEMENT.

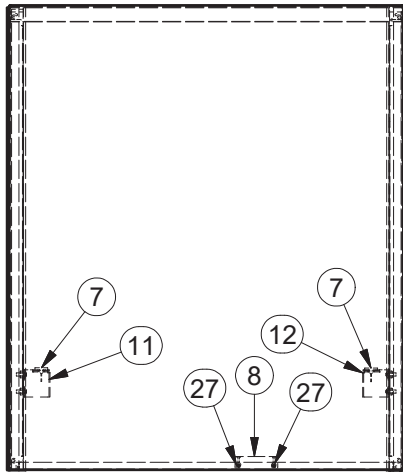
NOTE: 2. USE HEAT TRANSFER COMPOUND UNDER THERMOSTAT HEAD.



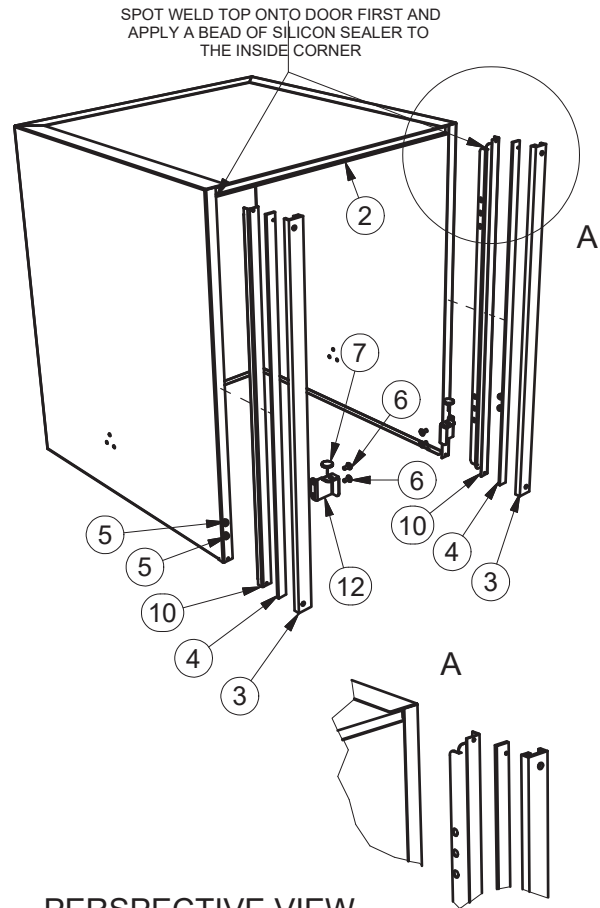
# M2 (3) PASS-THROUGH DOOR ASSY

326 10007 9/02/2010 REV 3-H

## FRONT VIEW

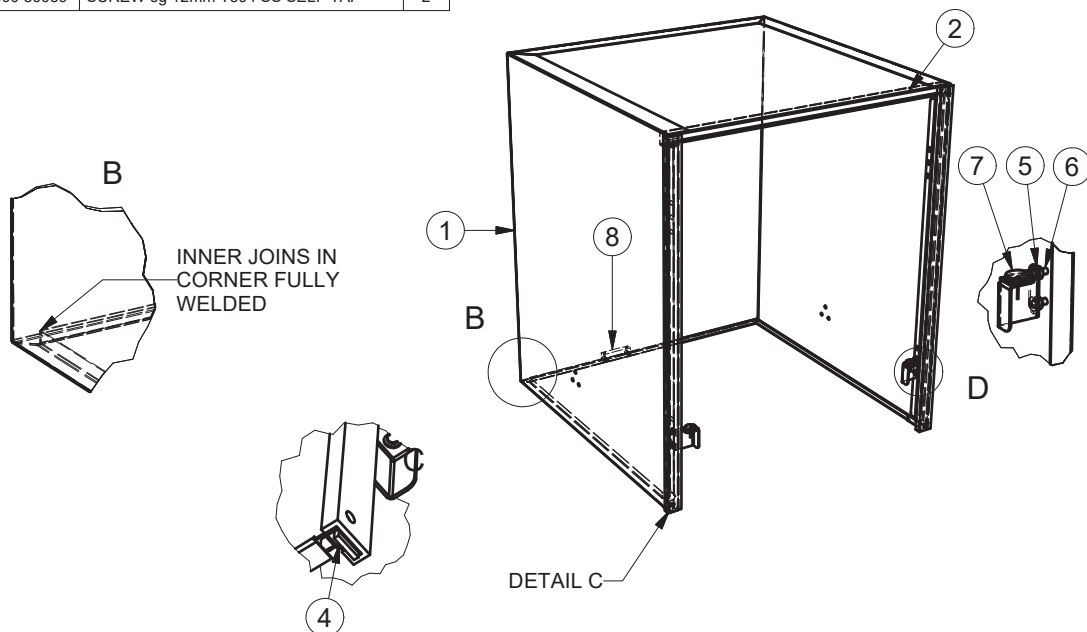


## EXPLODED PERSPECTIVE VIEW



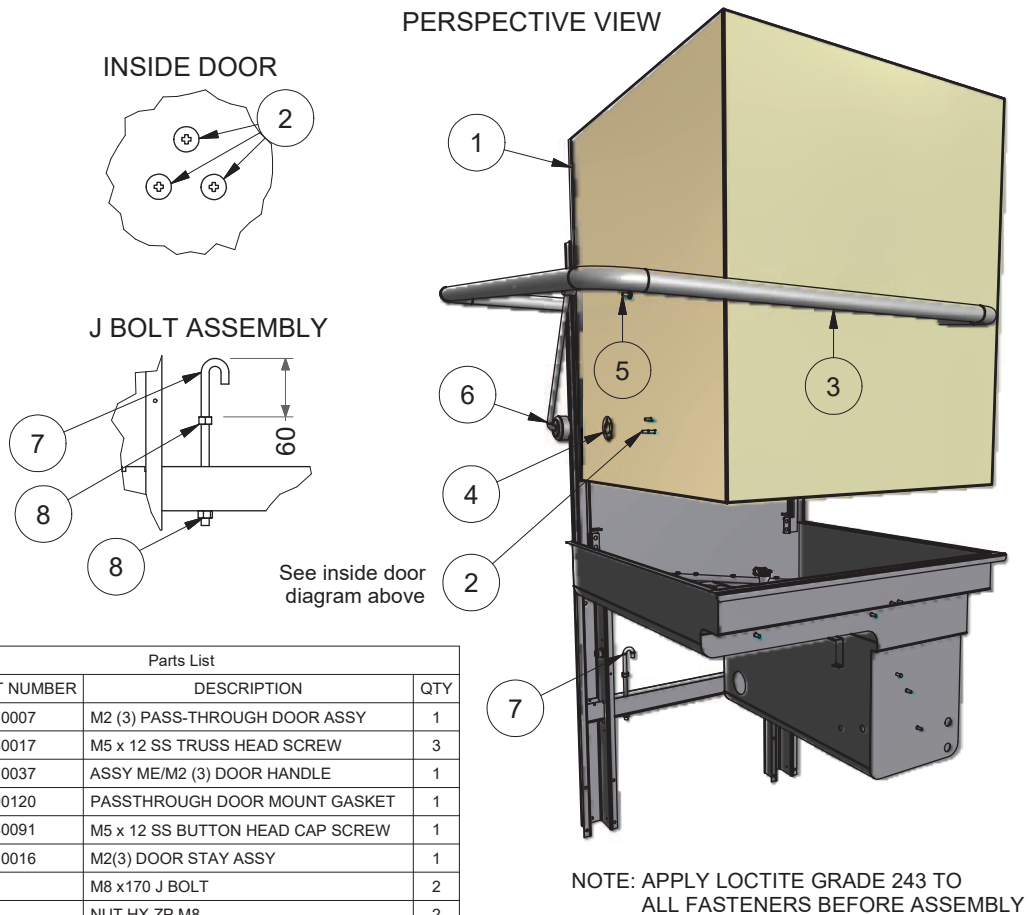
Parts List			
ITEM	PART NU	DESCRIPTION	QTY
1	326 20025	M2 (3) DOOR	1
2	326 20024	M2(3) DOOR UPPER INFILL	1
3	326 30004	M2 DOOR SLIDE	2
4	326 20007	M2(3) DOOR STRIP SPACER	2
5	600 80016	HANK BUSH 304 SS M5	4
6	600 80017	M5 x 12 SS TRUSS HEAD SCREW	4
7	1825	ANTI RATTLE BUTTON	2
8	600 30182	MAGNET	1
10	351 20074	AL(3) DOOR BACK RAIL SUPPORT	2
11	301 20009	M1(3) DOOR STOP BRACKET (LH)	1
12	301 20035	M1(3) DOOR STOP (RH)	1
27	600 80059	SCREW 6g 12mm T304 SS SELF TAP	2

## PERSPECTIVE VIEW



## M2 (3) DOOR LINK & J BOLT ASSY

326 10010 4/03/2011 REV 3-D



Parts List			
ITEM	PART NUMBER	DESCRIPTION	QTY
1	326 10007	M2 (3) PASS-THROUGH DOOR ASSY	1
2	600 80017	M5 x 12 SS TRUSS HEAD SCREW	3
3	326 10037	ASSY ME/M2 (3) DOOR HANDLE	1
4	400 90120	PASSTHROUGH DOOR MOUNT GASKET	1
5	600 80091	M5 x 12 SS BUTTON HEAD CAP SCREW	1
6	326 10016	M2(3) DOOR STAY ASSY	1
7	8899	M8 x170 J BOLT	2
8	8119	NUT HX ZP M8	2

### INSTRUCTIONS FOR DOOR SPRING REPLACEMENT

**Hazard Warning - service work to be carried out only by qualified persons. Ensure machine is isolated from Electrical Supply.**

When replacing a broken door spring it is advisable that if possible the machine is disconnected from the services and moved out so work can be carried out from the back of the machine.

Begin with the door in the down position and remove item 5 M5 x 12 SS BUTTON HEAD CAPSCREW from the handle at both sides of the door. Whilst holding the door handle down, remove item 6 M2(3) DOOR STAY ASSY from the door handle at both sides of the door and then allow the door handle to rise to a vertical position.

**NOTE:- IT IS IMPORTANT THAT THE DOOR HANDLE IS HELD DOWN WHEN CARRYING OUT THE ABOVE STEPS AS RELEASING IT TOO SOON MAY CAUSE IT TO SWING UPWARDS IN AN UNCONTROLLED MANNER, CAUSING INJURY.**

Move to the back of the machine and remove any parts of broken spring and check the J bolt and the spring hanger bracket for signs of wear. If the spring hanger brkt is badly worn please refer to Technical Bulletin TB 9011 for the fitting of retrofit spring hanger brackets.

Hook the new spring in place on the J bolt and pull it up to hook onto the spring hanger brkt welded on the handle. If this is not possible the lower nut holding the J bolt in place should be unscrewed until the spring can be attached and then the lower nut should be tightened up to its original position.

Once the new spring is fitted the handle can be lowered so that the door stays can be refitted and the capscrows fitted and tightened up. The capscrows should have loctite or similar applied to them before fitting.

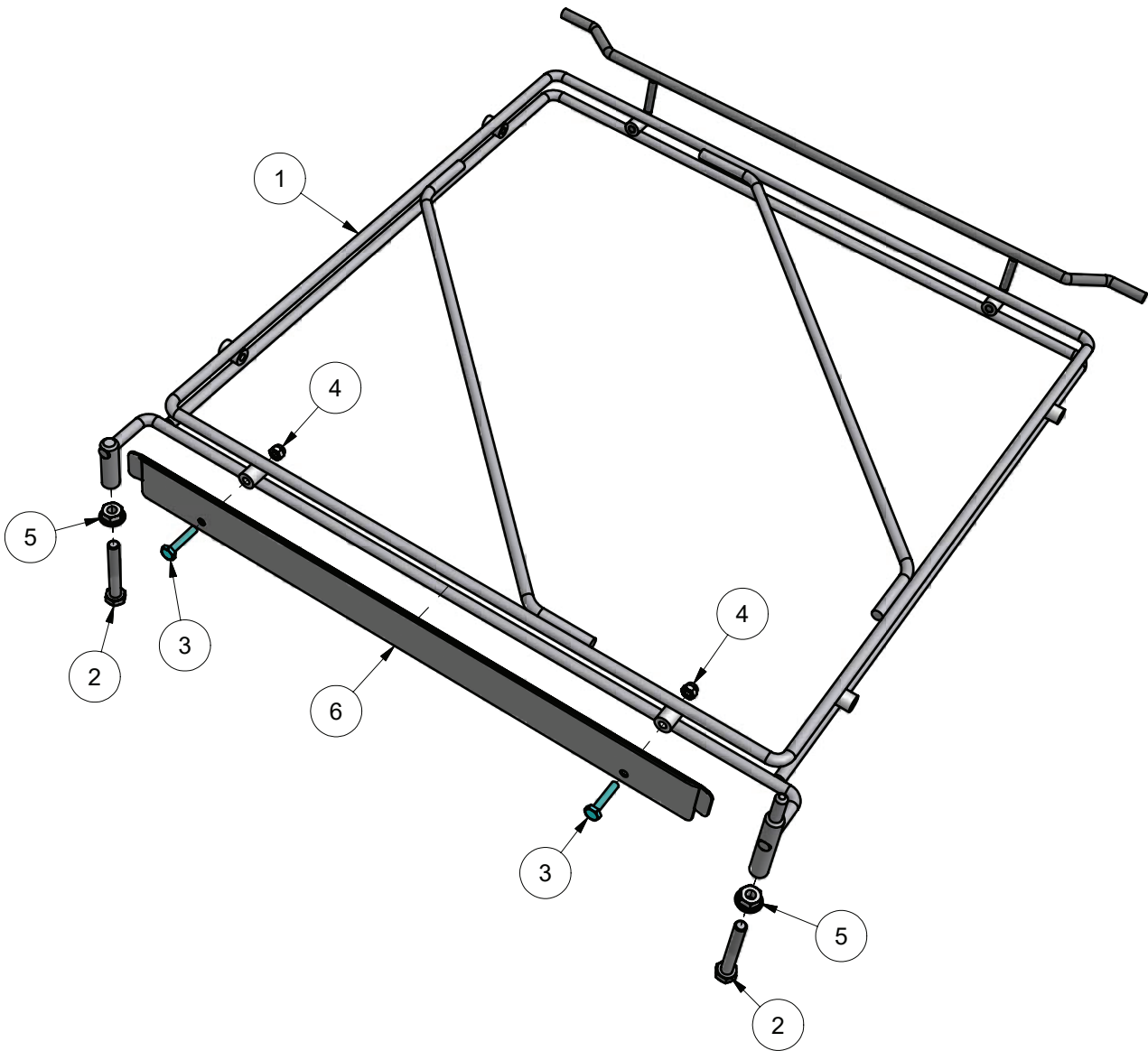
The door springs should be adjusted so that they hold the door against the door stops in the up position and the door does not lift by itself when in the down position.

If the machine cannot be moved out, the front panel must be removed and the lower nut on the J bolt accessed from the front of the machine. It will be necessary to immobilise the J bolt using vice grips clamped onto it to prevent it turning when adjusting the lower nut. The upper nuts should not be moved if at all possible.

# M2 RACKSLIDE ASSY MK2

326 10011 8/10/2008 REV 3-C

## PERSPECTIVE VIEW

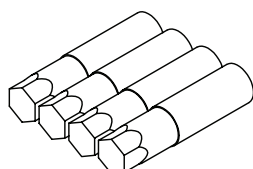


Parts List			
ITEM	PART NUMBER	DESCRIPTION	QTY
1	326 10012	M2(3) RACK SLIDE SUB ASSY MK2	1
2	600 80097	M8x20 NYLON HEX HEAD MACHINE SCREW	2
3	600 80094	M5 x 25 SS HEX HD SETsCREW	2
4	600 80060	NUT NYLOC M5 S/S	2
5	600 80023	NUT SS 304 HEX M8	2
6	351 20060	AL RACK SLIDE GUIDE	1

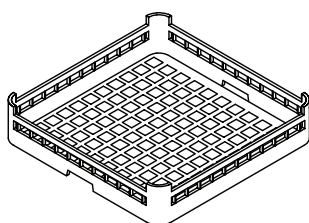
# Accessories

## ME(3)W ACCESSORIES

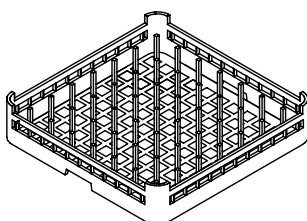
ME (3) ACW 20-10-05 1A



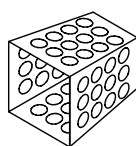
**600 90023**  
**ASSY SL/M1/M2 LEG (INOX 50x240xM12)**



**600 70029**  
**CUPRACK CB 500mm X 75mm high**



**600 70028**  
**DISHRACK P12/18 500mm 18 DISH**



**C660503**  
**CUTLERY CONTAINER G**

Information supplied in this manual is copyright. No part of this work may be reproduced or copied in any form or by any means, electronic or mechanical without the express permission of the author / publisher.



Distributed In  
Australia by

**MOFFAT®**

740 Springvale Road, Mulgrave 3170, Victoria, Tel 03 9518 3888 Fax 03 9518 3818

Service 1 800 622 216  
Parts 1 800 337 963