

WASHTECH

UD

GYf]Yg',

'Darts Manual



WASHTECH
PROFESSIONAL WASH SYSTEMS

Spare Parts

DESCRIPTION	PART NO
Cabinet & Door	
Door Assembly	207 10115
Door Catch Plunger Assembly	400 10104
Door Seal Gasket (540mm)	600 90064
Front Panel	207 20116
Hinge Guide	400 90113
Rear Safety Panel	207 20122
Rear Wheel	600 90003
Controls & Indicators	
Cord Set 15A	600 30452
Digital Temperature Sensor 500mm	600 30429
Digital Temperature Sensor 1000mm	600 30430
Door Reed Switch	600 30183
Loom LCD Interface 2.5m	600 30426
WI200 Controller PCBA	600 40081
WI200 Keypad Membrane	400 70160
WI200 LCD Interface PCBA	600 30420
Heating Components	
Over Temperature Thermostat	600 30088
Rinse Element 3 KW	600 30495
Rinse Tank Assembly	400 10207
Wash Element 2.5KW	600 30226
Hoses & Fittings	
Hose Clamp 6 mm	ASS 06
Hose Clamp 16 mm	ASS 16
Hose Drain Pump 2.5m	600 60105
Hose Drain Pump Inlet (200mm)	6196
Pressure Switch Hose (520mm)	3067
Rinse Hose (specify length)	600 60073
Wash Pump Inlet Hose	1262
Wash Pump Outlet Hose (75mm)	6195
Lower Wash Connection Hose (75mm)	6196
Upper Wash Hose	400 90012

Spare Parts

DESCRIPTION	PART NO
Pumps & Solenoids	
Detergent Pump	600 30094
Detergent Pump Hose	600 30148
Detergent Squeeze Tube	600 30134
Drain Pump	600 60102
Rinse Aid Pump Adjustable	600 30480
Rinse Aid Squeeze Tube	600 30119
Solenoid Valve	3342
Wash Pump	3888
Wash Tank Components	
Drain Upstand	207 10022
Filter Assembly	207 10004
Pressure Bell	400 90135
Pressure Bell O Ring	ARP 205
Rinse Arm Assembly	400 10239
Rinse Spindle	400 30339
Scrap Tray	207 20159
Wash Arm Assembly	400 10241
Wash Spindle	400 30072
Wash Spindle Nut	400 30074

Note:

For more parts look in the section “Assembly Diagrams”

Assembly Diagrams

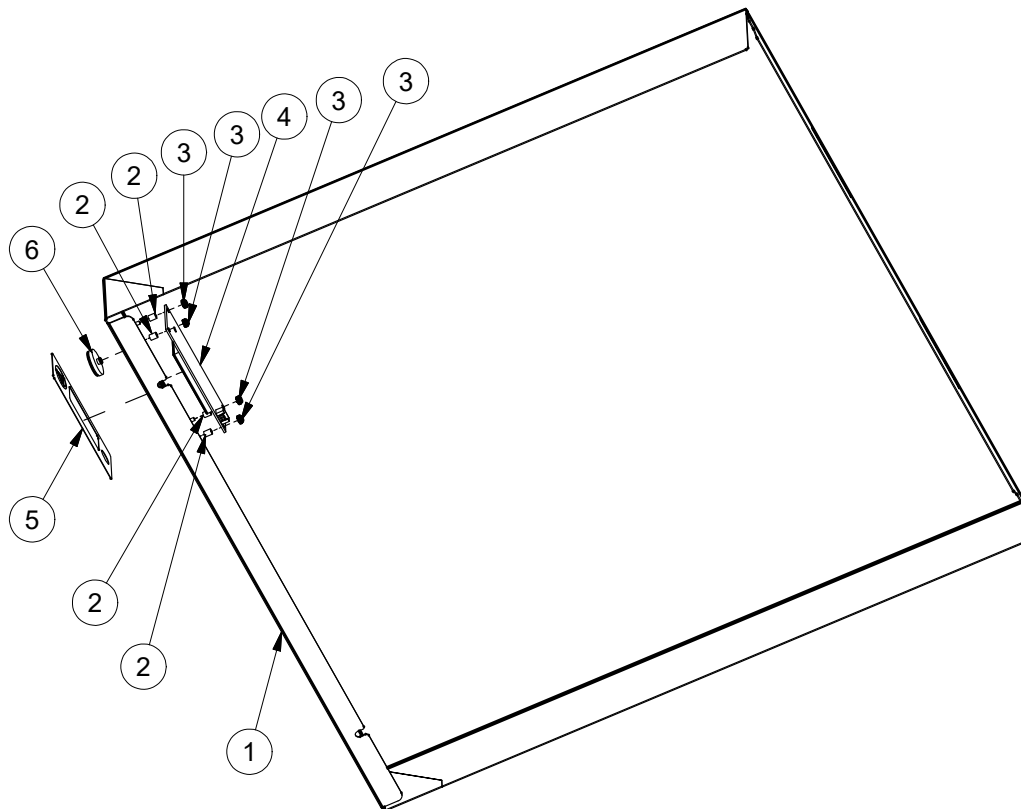
UD8 CONTROL PANEL ASSEMBLY

207 11043 19/02/2016 REV 1-A

FRONT VIEW



EXPLODED VIEW

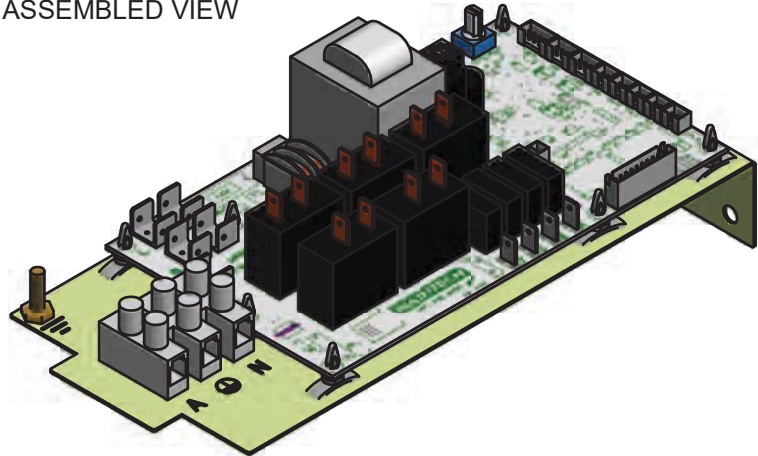


Parts List			
ITEM	PART NUMBER	DESCRIPTION	QTY
1	207 10018	CONTROL PANEL SUB-ASSEMBLY	1
2	600 30450	SPACER RETAINING M3 x 6.35MM	4
3	600 80122	M3 SS HEX NYLON NUT T304	4
4	KIT0440069	LCD INTERFACE PCBA	1
5	KIT0440047	WASHTECH KEYPAD MEMBRANE c/w Item	1
6	600 30421	LED DIFFUSER BUTTON	1

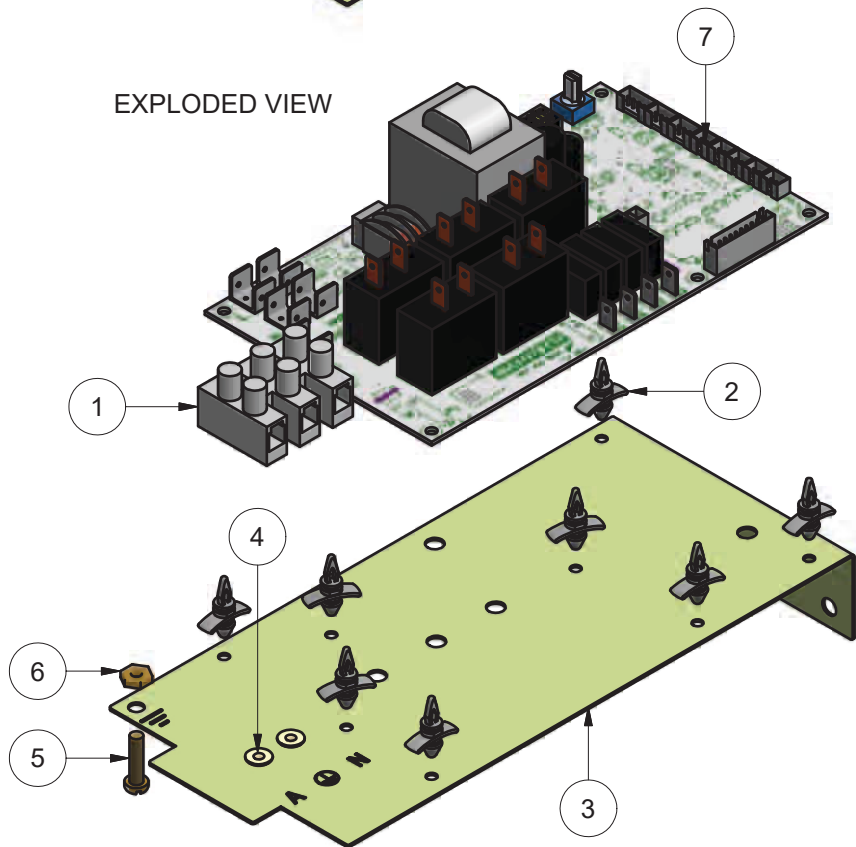
EP/EU/UD7 WIRING TRAY ASSEMBLY

208 10017 20/11/2012 REV 1-A

ASSEMBLED VIEW



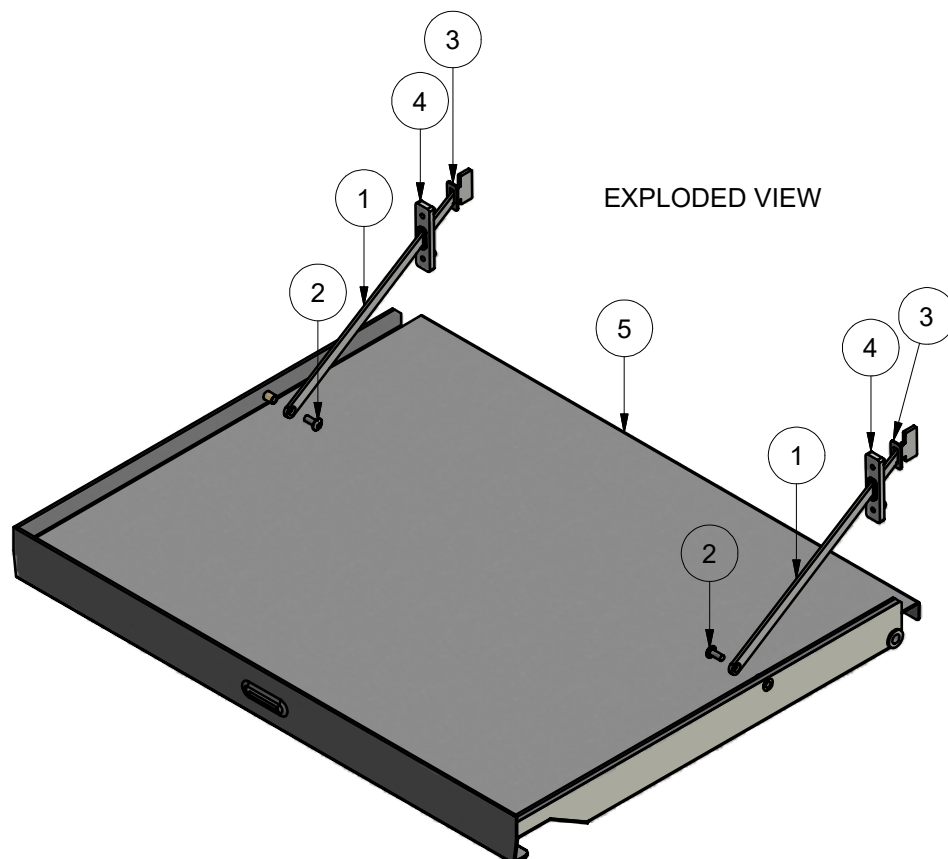
EXPLODED VIEW



Parts List			
ITEM	PART NUMBER	DESCRIPTION	QTY
1	3227	TERMINAL STRIP 4 WAY	1
2	600 30449	PCB SUPPORT NYLON 6.3MM	8
3	208 20005	EP/EU/XP/XU WIRING TRAY	1
4	600 80003	M4 NUTSERT	2
5	8816	MS RH BRASS 3/16 X 3/4	1
6	8151	NUT HX BRASS 3/16" PRESSED	1
7	KIT0440067	ELECTRONICS CONTROLLER KIT V2	1

UD8 DOOR & STAYS ASSEMBLY

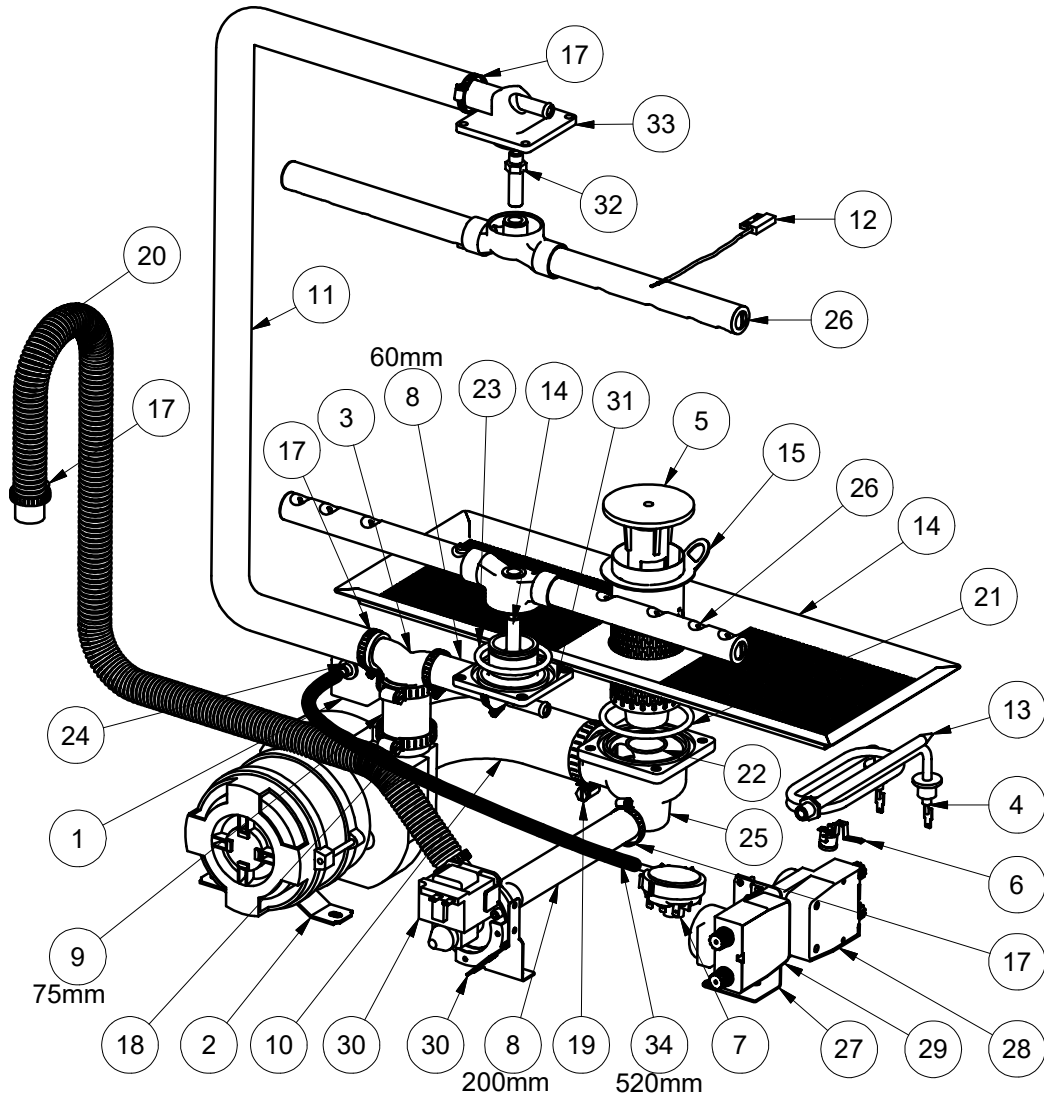
207 10120 29/01/2016 REV 1-A



Parts List			
ITEM	PART NUMBER	DESCRIPTION	QTY
1	207 20054	XU DOOR STAY	2
2	600 80017	M5 x 12 SS TRUSS HEAD SCREW	2
3	278 20066	GLV5\UD5\GL5 DOOR STOP BRKT	2
4	400 90113	HINGE GUIDE	2
5	207 10115	UD8 DOOR ASSEMBLY	1

UD8 WASH SYSTEM

UD8 0001 2/02/2016 REV 1-A

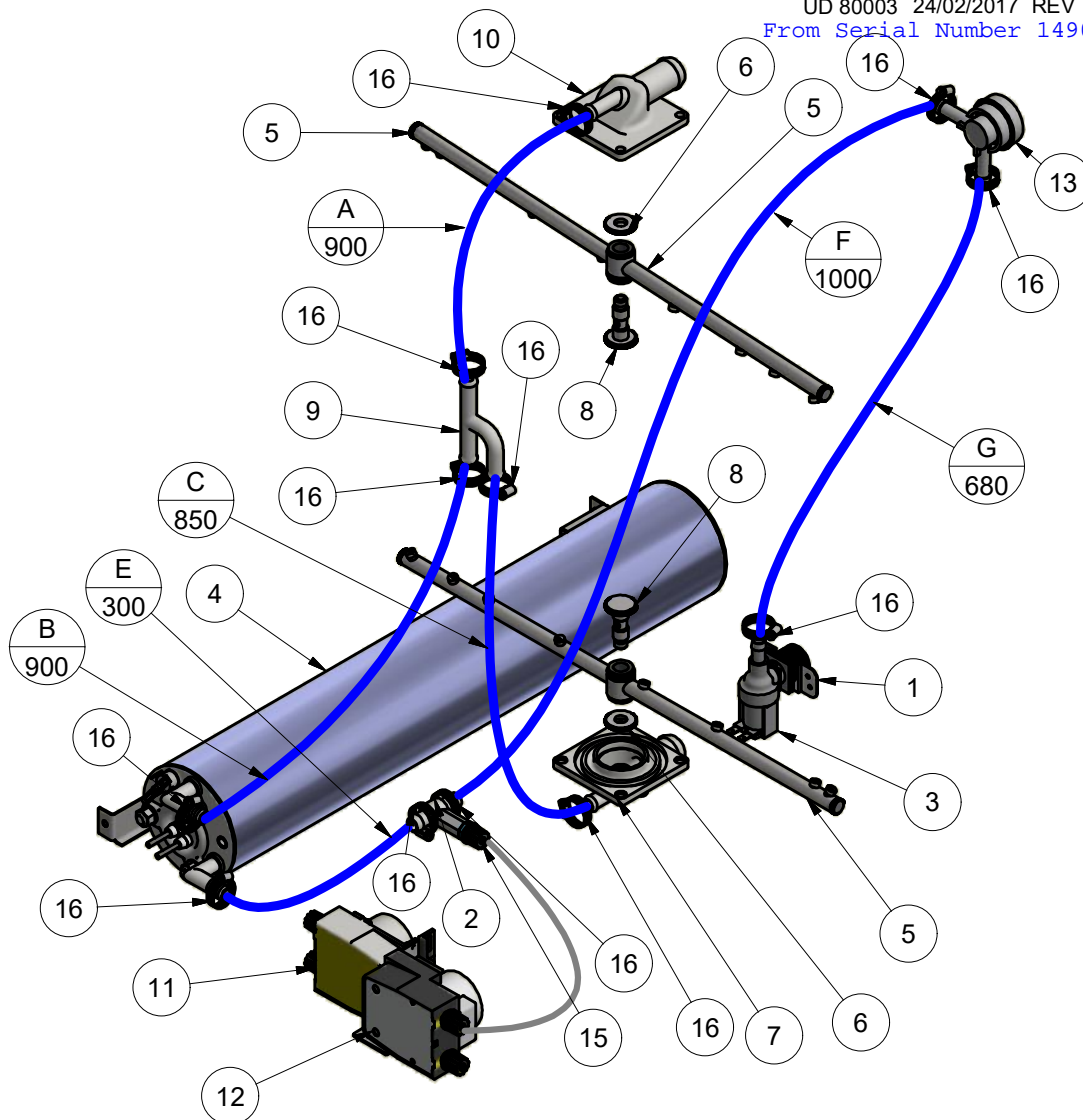


ITEM	PART No	DESCRIPTION	QTY	ITEM	PART No	DESCRIPTION	QTY
1	400 90135	PRESSURE BELL CASTING	1	18	ASS24	HOSE CLAMP ASS24	2
2	3888	PUMP WASH 0.5HP	1	19	ASS28	HOSE CLAMP ASS28	2
3	400 90069	38mm x 25mm REDUCER TEE	1	20	600 60105	HOSE DRAIN PUMP 2.5M	1
4	600 30226	ELEMENT 2500W 240V	1	21	ARP336	O-RING ARP336	1
5	207 10022	212mm UPSTAND 'F' w SLOTS	1	22	ARP38x2	O-RING ARP38x2 N70	1
6	600 30088	TSTAT TY60/R-110C [With BKT]	1	23	ARP333	O-RING ARP333	2
7	600 30478	PRESSURE SWITCH 50/20MM	1	24	ARP205	O-RING 11IDx18OD	1
8	6196	HOSE 25mm 2 PLY RADIATOR	1	25	400 30202	DRAIN/WASH INLET CASTING	1
9	6195	HOSE 38mm 2 PLY RADIATOR	1	26	400 10241	ASSY SS WASH ARM	2
10	1262	UHB44 W/PUMP INLET HOSE	1	27	400 20182	PERI PUMPS BRACKET	1
11	400 90012	HOSE UPPER WASH	1	28	600 30480	PERI PUMP RA ADJUSTABLE	1
12	600 30183	REED SWITCH STEM	1	29	600 30094	PERI PUMP 1.5L/H SEKO-KIT	1
13	400 10065	ASSY THERM PROBE POCKET	1	30	600 60102	DRAIN PUMP 220-240V 50Hz	1
14	207 20159	UD8 SCRAP TRAY	1	31	400 30194	UE/M1 LOWER WASH TEE	1
15	207 10004	XU/UD Filter	1	32	400 30072	M2 WASH SPINDLE	2
16	213 20032	WASH PUMP BRACKET	2	33	400 90077	GLV\UD\UDC WASH TEE	1
17	ASS16	HOSE CLAMP	12	34	3067	PRESSURE SWITCH HOSE	1

* 3892 Wash Pump Capacitor 12.5uF (not shown)

UD8(W) RINSE SYSTEM

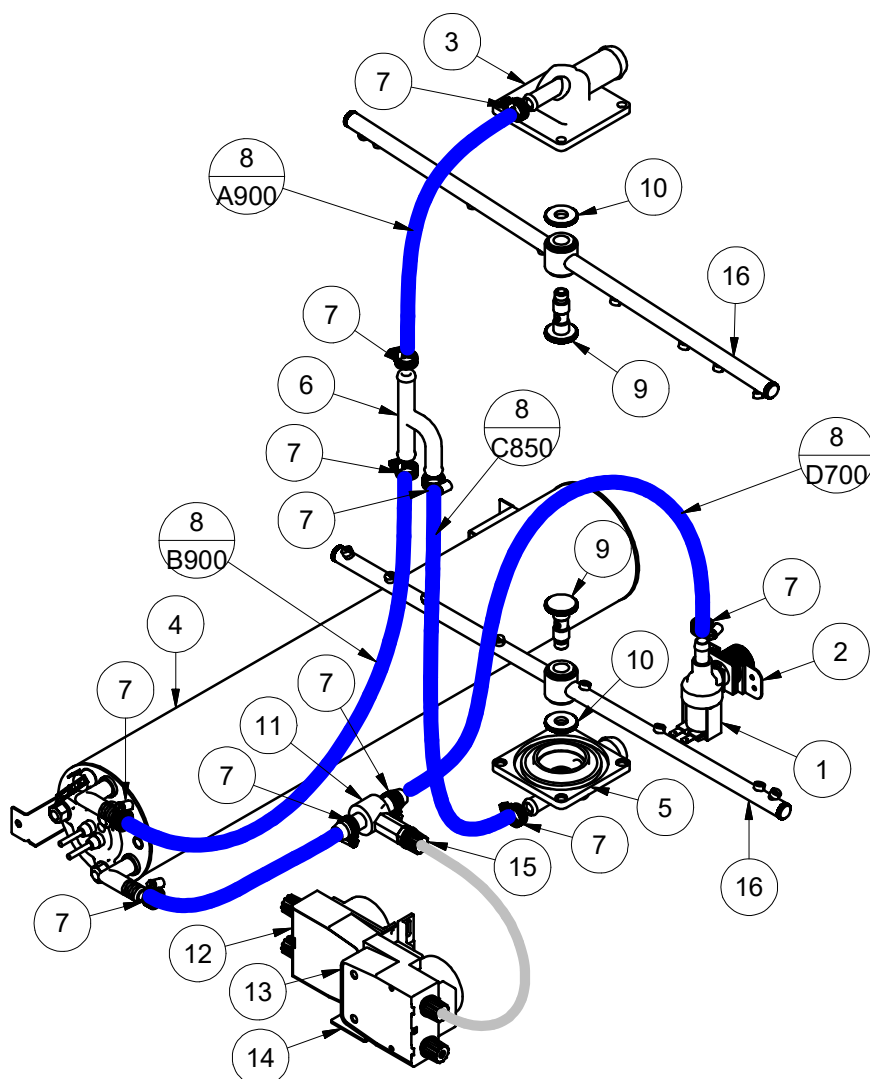
UD 80003 24/02/2017 REV 1-B
From Serial Number 149025



Parts List			
ITEM	PART NUMBER	DESCRIPTION	QTY
1	1247	INLET SOLENOID SUPPORT	1
2	280 30003	TEE BRACON RINSE AID	1
3	3342	SOLENOID VALVE 1 WAY	1
4	400 10208	RINSE TANK UD SS 550MM ASSEMBLY V2	1
5	400 10239	RINSE ARM 490mm ASSEMBLY w Bush	2
6	400 30074	NUT M2 WASH SPINDLE	2
7	400 30194	UE(5)/M1(3) LOWER WASH TEE	1
8	400 30339	RINSE SPINDLE SHORT	2
9	400 90076	SS RINSE TEE	1
10	400 90077	GLV\UD\UDC WASH TEE	1
11	600 30094	DETERGENT PUMP KIT	1
12	600 30480	RINSE AID PUMP ADJUSTABLE	1
13	600 60053	VACUUM BREAKER 1/2" ASSEMBLY	1
14	600 60073	HOSE HOTOTAL 11mm x 19mm	5
15	@600 30480	NON RETURN VALVE	1
16	ASS06	HOSE CLAMP	12

UD8(W) RINSE SYSTEM

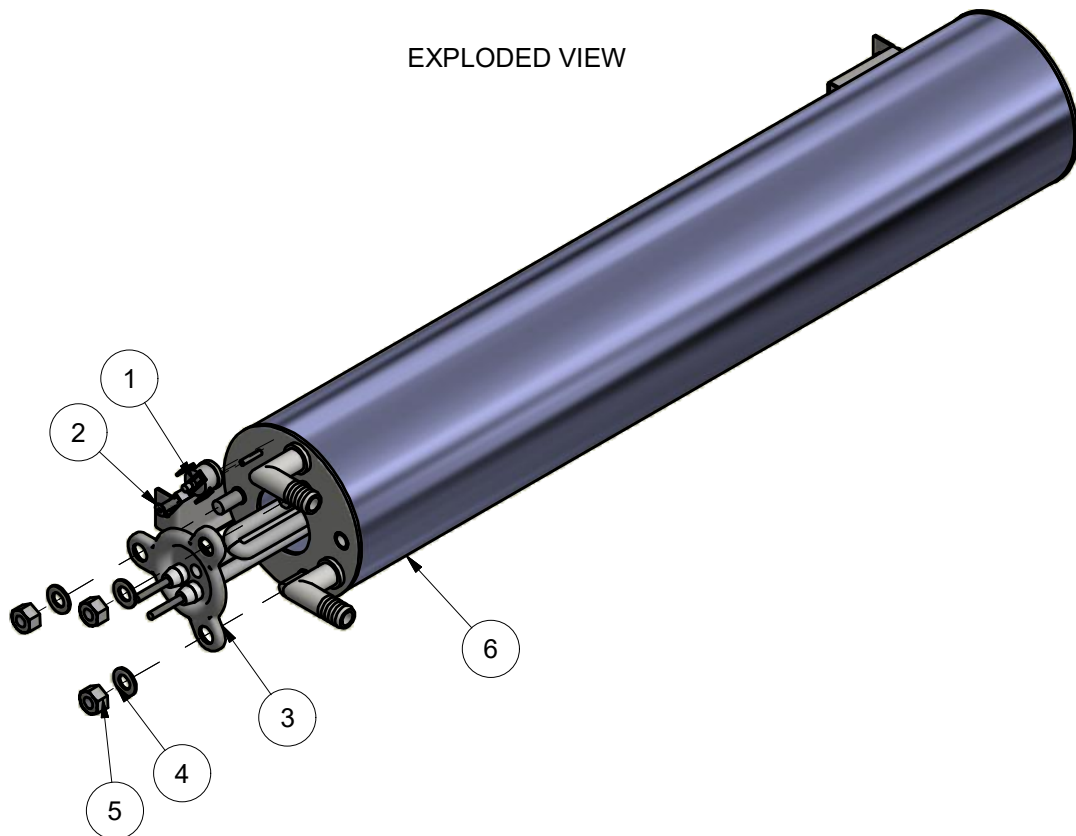
UD 80003 22/02/2016 REV 1-A
To Serial Number 149024



Parts List			
ITEM	PART NUMBER	DESCRIPTION	QTY
1	3342	SOLENOID VALVE 1 WAY	1
2	1247	INLET SOLENOID SUPPORT	1
3	400 90077	GLVUD\UDC WASH TEE	1
4	400 10208	RINSE TANK SS 550MM ASSEMBLY V2	1
5	400 30194	UE(5)/M1(3) LOWER WASH TEE	1
6	400 90076	SS RINSE TEE	1
7	ASS05	HOSE CLAMP	10
8	600 60073	HOSE HOTOTAL 11mm x 19mm	5
9	400 30339	RINSE SPINDLE SHORT	2
10	400 30074	NUT M2 WASH SPINDLE	2
11	280 30003	TEE BRACKTON RINSE AID	1
12	600 30094	PERI PUMP 1.5L/H SEKO-KIT	1
13	600 30480	PERI PUMP RA ADJUSTABLE	1
14	400 20182	PERISTALTIC PUMPS BRACKET	1
15	@600 30480	NON RETURN VALVE	1
16	400 10239	RINSE ARM 494mm ASSEMBLY w Bush	2

RINSE TANK UD SS 550MM ASSEMBLY V2

400 10208 9/01/2017 REV 3-B

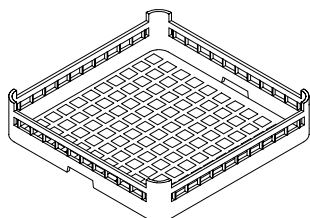


Parts List			
ITEM	PART NUMBER	DESCRIPTION	QTY
1	600 30088	TSTAT TY60/R-110C [WITH E BKT]	1
2	600 80064	STANDOFF M3 x 12	1
3	600 30495	Element 3kW Single Blade Rinse	1
4	600 80022	WASHER FL SS 304 M8x16x1.2mm	3
5	600 80063	NUT NYLOC SS M8	3
6	400 10329	RINSE TANK UD SS 550MM SUB ASSEMBLY V2 C/W STUDS	1

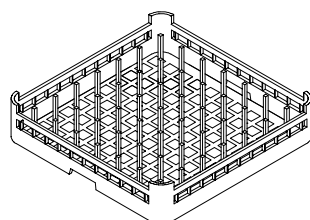
Accessories

WASHTECH UD8 ACCESSORIES

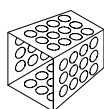
UD8 ACS 26/06/17 1B



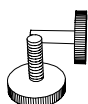
600 70029
CUPRACK CB 500mm X 75mm high



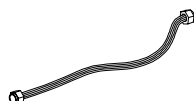
600 70028
DISHRACK P12/18 500mm 18 DISH



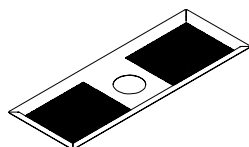
C660503
CUTLERY CONTAINER G



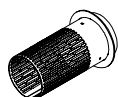
C440201
RUBBER FOOT D.60 X 10



600 60080
HOSE SS 2M



207 20159
SCRAP TRAY

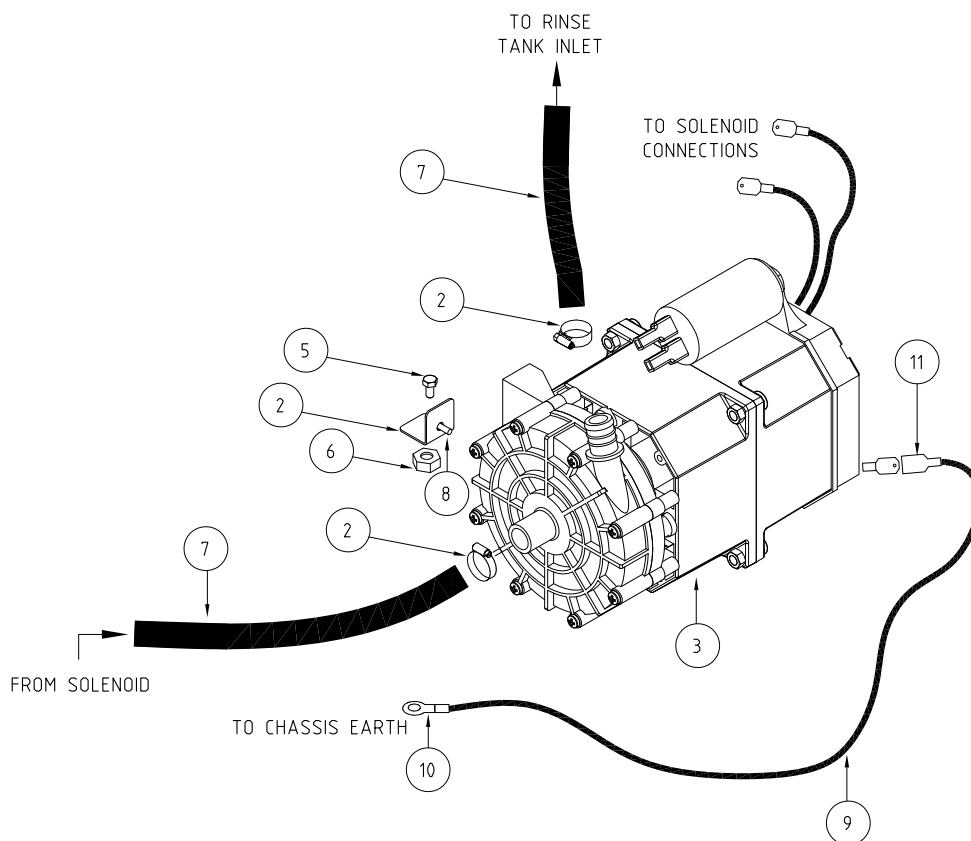


207 10004
FILTER ASSEMBLY

Appendices

RINSE PUMP KIT TYPE L - P/N 0440021

400 90142-1 31-05-10 1H



PARTS LIST - LGB RINSE PUMP KIT 0440021			
ITEM	CODE	DESCRIPTION	QTY
1	273 20013	BRACKET -RINSE PUMP	2
2	ASS06	HOSE CLIP ASS6	2
3	600 30400	0.25 kW RINSE PUMP WITH CAPACITOR 5uf	1
4	H1909B	DOUBLE ADAPTOR	2
5	88461	BOLT M6 x 12 S/S HEX	1
6	8106	NUT M6 HEX SS	1
7	600 60073	HOSE HOTAL 11mm x 19mm	0.7M
8	8801	MS PAN POZI ZP M4x12	1
9	600 30014	WIRE 0.75mm GREEN/YELLOW	0.5M
10	H4115	RING TERMINAL RED	1
11	H3560	TERMINAL SPADE RED	1
12	400 90142	RINSE PUMP KIT RETROFIT DIAGRAM	1

1. Install rinse pump using the bracket and bolts provided
2. Remove hose from solenoid and reconnect it to rinse pump outlet using hose clamp provided
3. Connect hose #7 supplied in kit from pump inlet to solenoid using hose clamp provided
4. Earth pump on chasis earth stud with green\yellow wire provided in wiring loom.
5. Connect pump wiring according to electrical diagrams provided in service manual or schematic diagram, supplied with the machine.

Information supplied in this manual is copyright.
No part of this work may be reproduced or copied
in any form or by any means, electronic or
mechanical without the express permission of the
author/publisher

Distributed in Australia by Moffat Pty Limited



740 Springvale Road
Mulgrave 3170
Victoria
Australia

24HR Service 1 800 622 216
Parts 1 800 337 963

Tel	03 9518 3888
Fax	03 9518 3818
E-mail	vsales@moffat.com.au
web	www.moffat.com.au

ISO9001

All Washtech products are designed and
manufactured by Washtech using the
internationally recognised ISO9001 quality
management system, covering design,
manufacture and final inspection, ensuring
consistent high quality at all times.

In line with policy to continually develop and
improve its products, Washtech Ltd reserves the
right to change specifications and design without
prior notice.

an Ali Group Company



The Spirit of Excellence