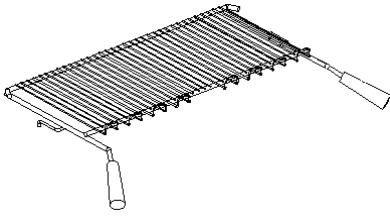
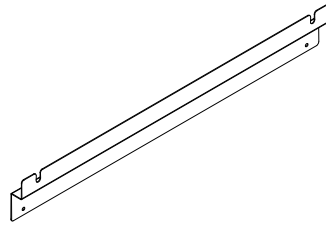


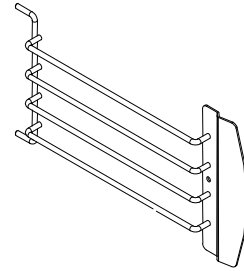
Salamander Rack (017963)
Rack Handle (013395)



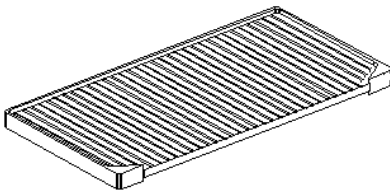
Wall Mounting Bracket (026096)



Side Rack (026093)



Branding Plate (013418)



Gas Conversion Kits Index

AU,NZ,XP Models Only

MODEL TYPE	CONVERT TO	CONVERSION KIT
G91 SALAMANDER (with PILOTS) <i>(To Ser No.401964).</i>	LPG	026300
	NAT	026301
	BUTANE	026307
	TOWNS	232051

MODEL TYPE	CONVERT TO	CONVERSION KIT
G91 SALAMANDER (without PILOTS) <i>(From Ser No.401965).</i>	LPG	232056
	NAT	232057
	BUTANE	232058
	TOWNS	232059

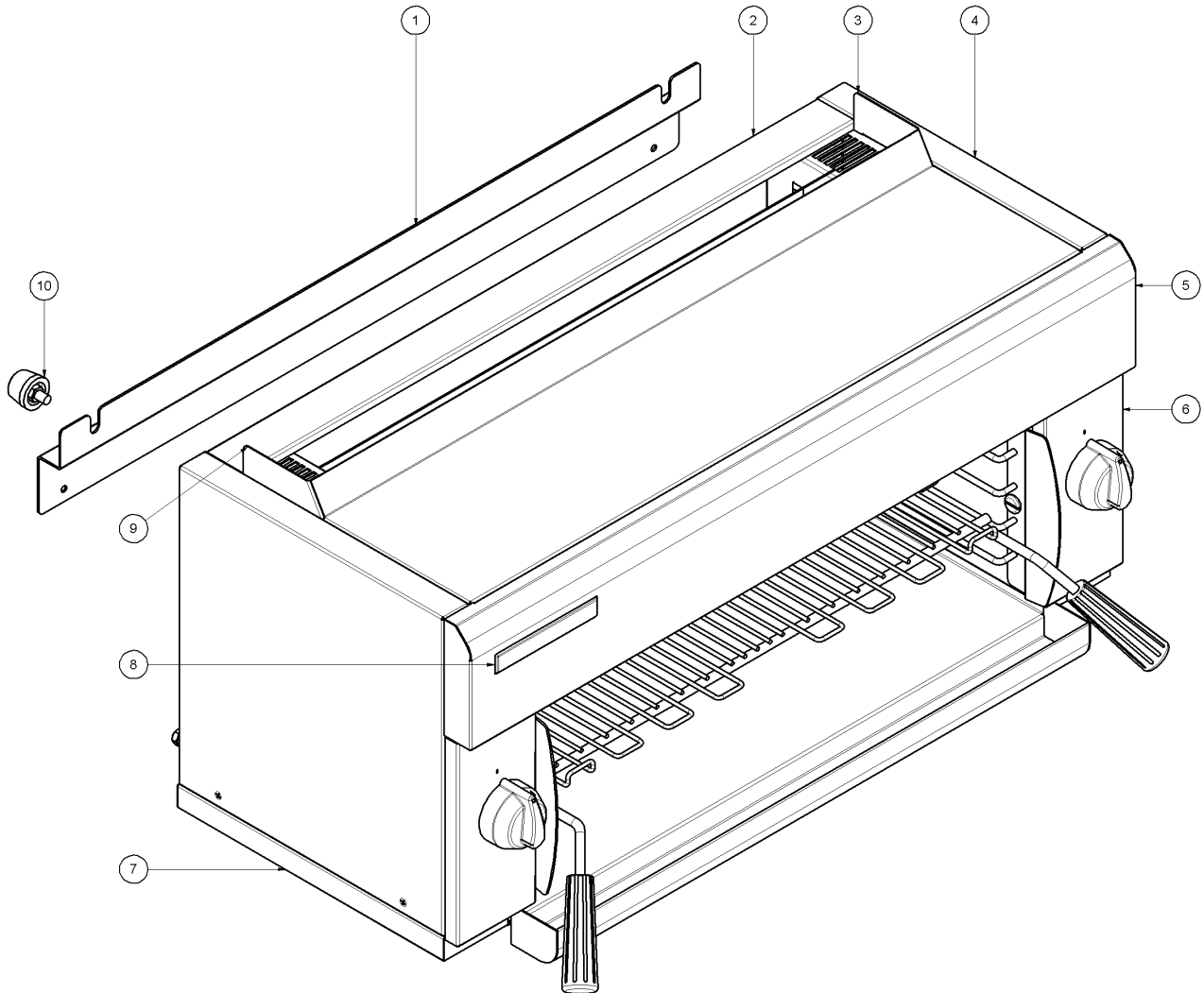
UK Models Only

MODEL TYPE	CONVERT TO	CONVERSION KIT
G91 SALAMANDER (with PILOTS) <i>(To Ser No.401964).</i>	Propane (G31)	026302
	NAT Gas (G20)	026303

MODEL TYPE	CONVERT TO	CONVERSION KIT
G91 SALAMANDER (without PILOTS) <i>(From Ser No.401965).</i>	Propane (G31)	232056
	NAT Gas (G20)	232057

8.1 G91 (up to Ser No.401964 - Models fitted with Pilot Burners)

8.1.1 G91 Main Assembly (to Ser. No. 401964)

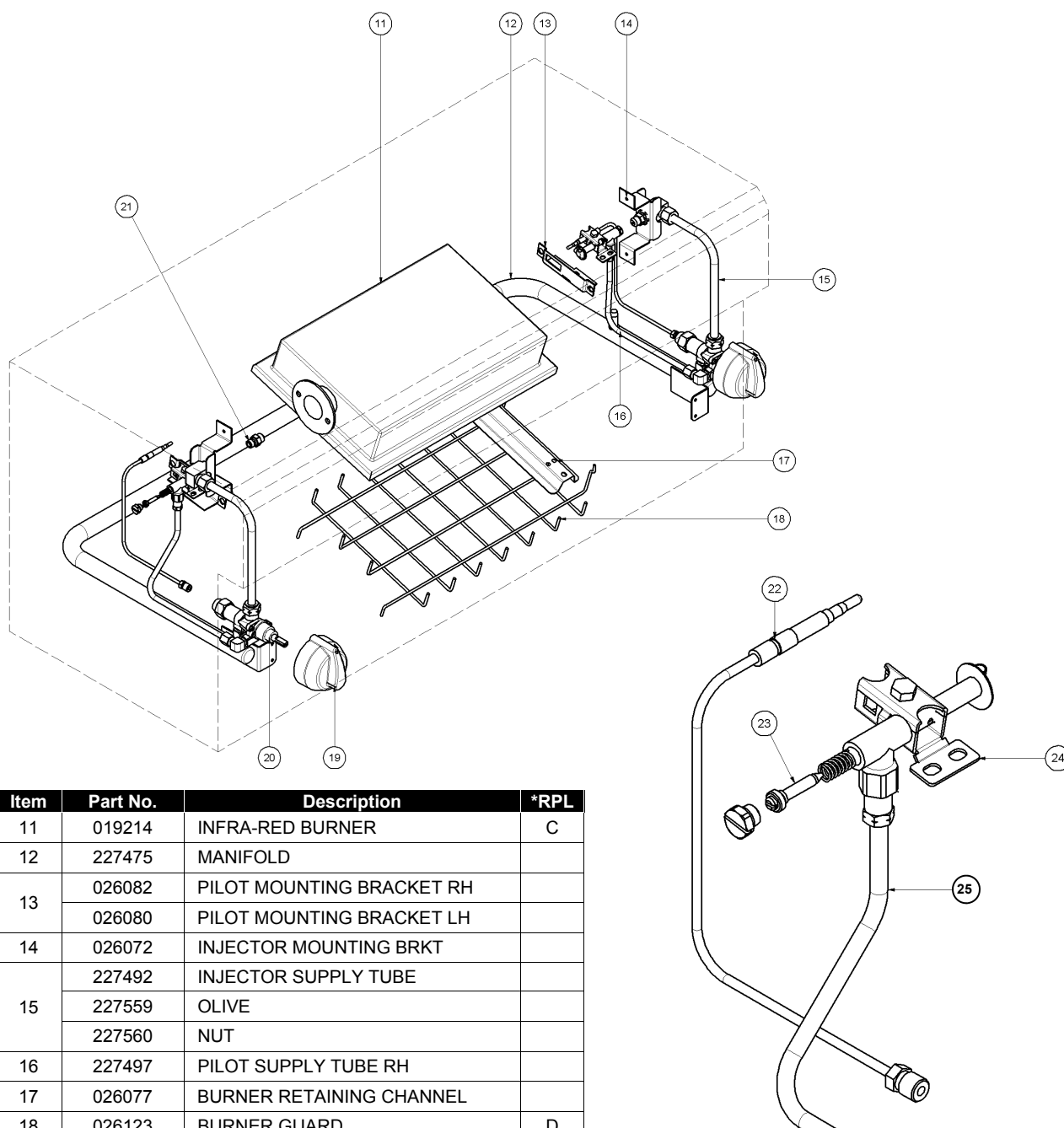


Item	Part No.	Description	*RPL
1	026096	WALL MOUNTING BRACKET	D
2	026086	BACK PANEL	D
3	026090	FLUE END RH	
4	026094	SIDE PANEL	D
5	227476	FRONT COVER	D
6	227490	CONTROL PANEL	D
7	026091	TRAY SUPPORT	
8	227960	BLUE SEAL BADGE	D
9	026089	FLUE END LH	
10	013908	SPACER FOOT ASSY	D

*Recommended Parts Level	
RPL	Number of units in service
A	1-5
A+B	5-10
A+B+C	10-50
A+B+C+D	50+

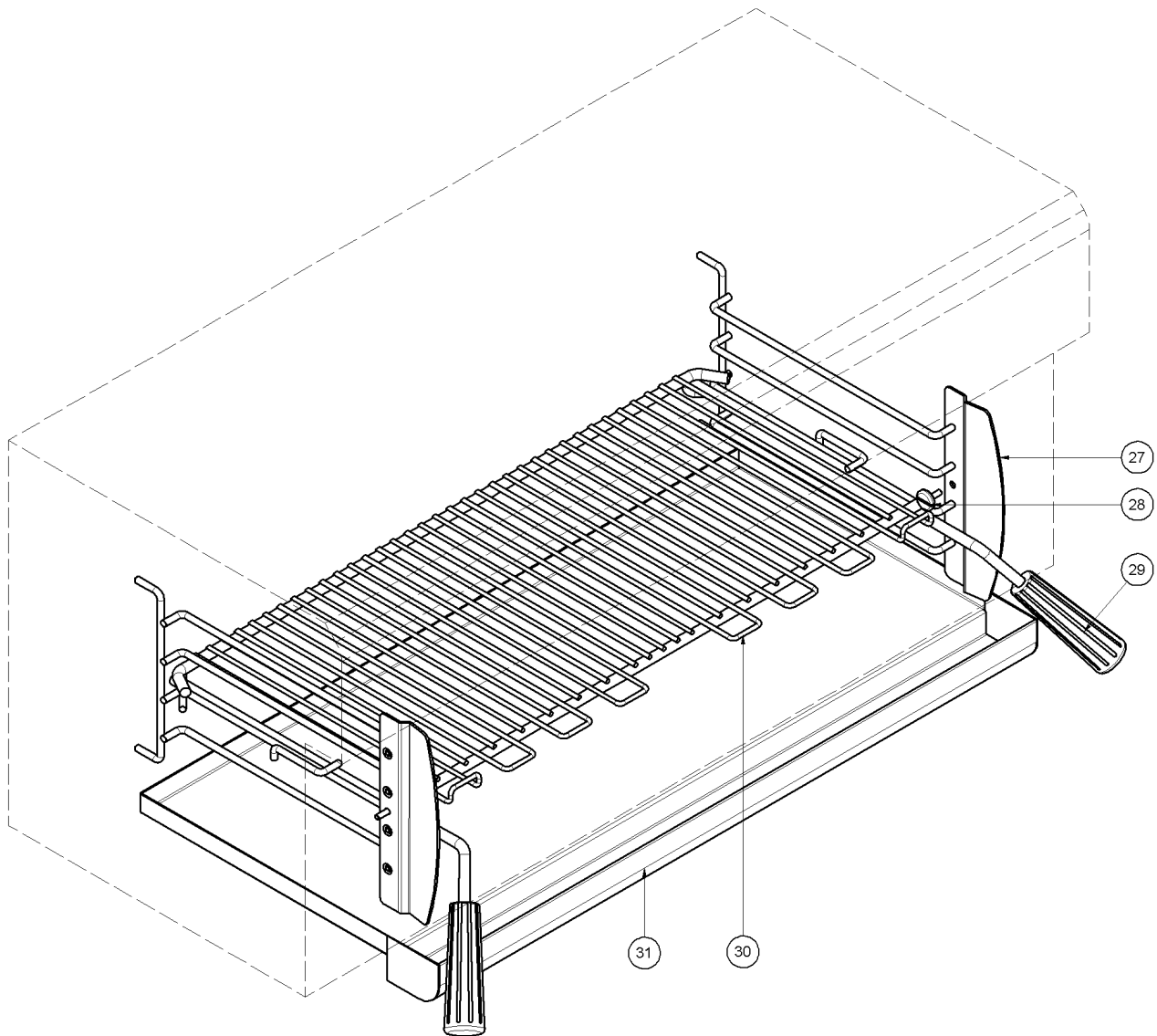
8 Exploded Parts Diagrams

8.1.2 G91 Gas Assembly (to Ser. No. 401964)



Item	Part No.	Description	*RPL
11	019214	INFRA-RED BURNER	C
12	227475	MANIFOLD	
13	026082	PILOT MOUNTING BRACKET RH	
13	026080	PILOT MOUNTING BRACKET LH	
14	026072	INJECTOR MOUNTING BRKT	
15	227492	INJECTOR SUPPLY TUBE	
15	227559	OLIVE	
15	227560	NUT	
16	227497	PILOT SUPPLY TUBE RH	
17	026077	BURNER RETAINING CHANNEL	
18	026123	BURNER GUARD	D
19	227378	KNOB BSEAL 8mm GAS PF	B
20	017800	GAS CONTROL	A
21	034115	INJECTOR 1.15mm LPG	C
21	034185	INJECTOR 1.85mm NAT	C
21	034110	INJECTOR 1.10mm BUTANE	C
21	229511	INJ ELBOW	
21	025093	NUT	
22	019218	THERMOCOUPLE 450mm	A
23	026134	PILOT INJECTOR Ø0.30mm NAT	A
23	026136	PILOT INJECTOR Ø0.20mm LPG	A
24	026133K	PILOT BURNER KIT	A
25	227493	PILOT SUPPLY TUBE	

*Recommended Parts Level	
RPL	Number of units in service
A	1-5
A+B	5-10
A+B+C	10-50
A+B+C+D	50+

8.1.3 G91 Racking Assembly (to Ser. No. 401964)

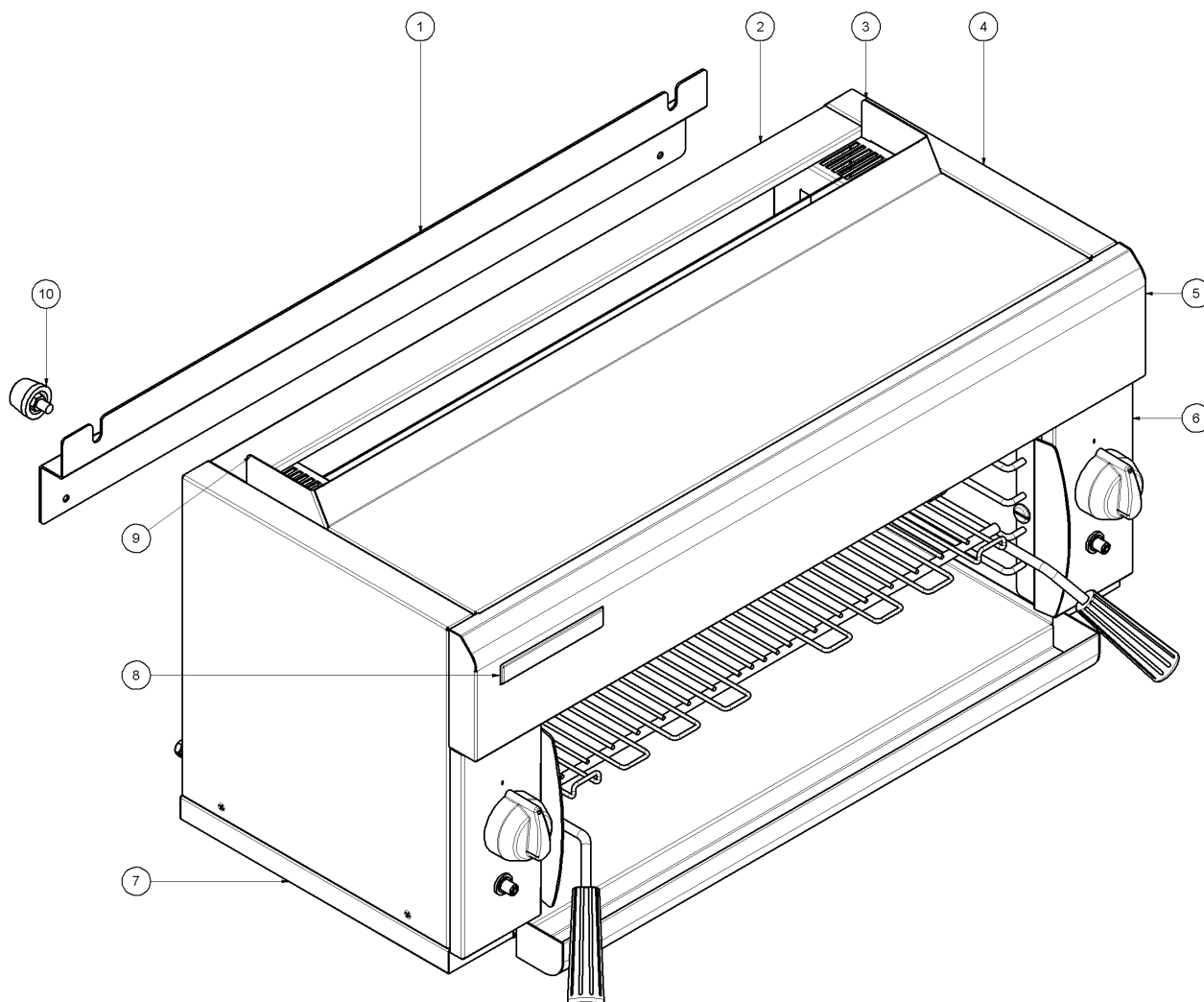
Item	Part No.	Description	*RPL
27	026093	SIDE RACK WA - SALAMANDER	D
28	227961	SIDE RACK SCREW	D
29	013395	RACK HANDLE	C
30	017963	RACK	D
31	227950	TROUGH TRAY WA	D

*Recommended Parts Level	
RPL	Number of units in service
A	1-5
A+B	5-10
A+B+C	10-50
A+B+C+D	50+

8 Exploded Parts Diagrams

8.2 G91 (from Ser No.401965 - Models without Pilot Burners)

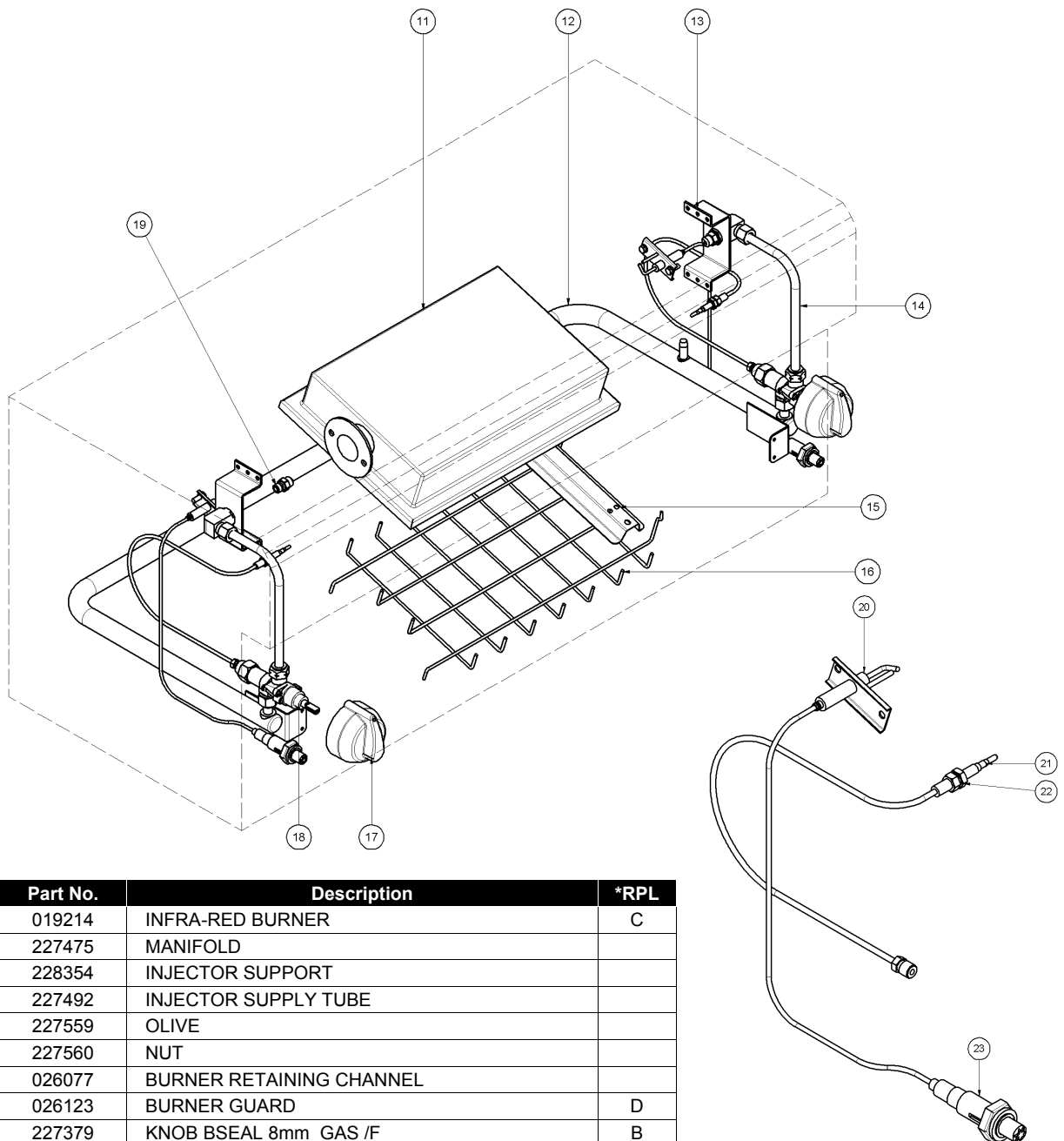
8.2.1 G91 Main Assembly (from Ser. No. 401965)



Item	Part No.	Description	*RPL
1	026096	WALL MOUNTING BRACKET	D
2	026086	BACK PANEL	D
3	026090	FLUE END RH	
4	026094	SIDE PANEL	D
5	227476	FRONT COVER	D
6	231541	CONTROL PANEL (Models with Piezo ignition)	D
	227490	CONTROL PANEL (Models without Piezo ignition)	D
7	026091	TRAY SUPPORT	
8	227960	BLUE SEAL BADGE	D
9	026089	FLUE END LH	
10	013908	SPACER FOOT ASSY	D

*Recommended Parts Level	
RPL	Number of units in service
A	1-5
A+B	5-10
A+B+C	10-50
A+B+C+D	50+

8.2.2 G91 Gas Assembly (from Ser. No. 401965)

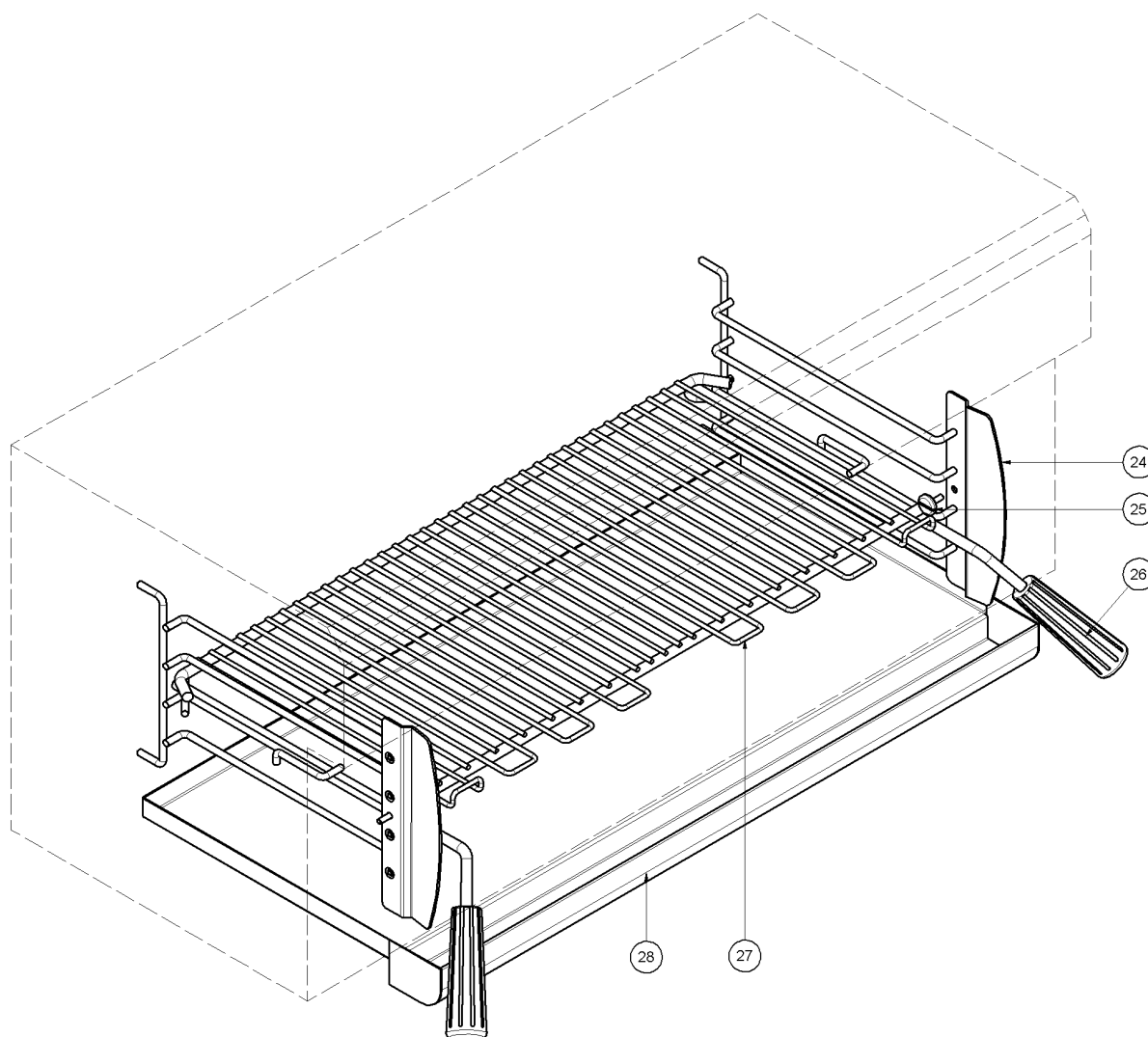


Item	Part No.	Description	*RPL
11	019214	INFRA-RED BURNER	C
12	227475	MANIFOLD	
13	228354	INJECTOR SUPPORT	
14	227492	INJECTOR SUPPLY TUBE	
	227559	OLIVE	
	227560	NUT	
15	026077	BURNER RETAINING CHANNEL	
16	026123	BURNER GUARD	D
17	227379	KNOB BSEAL 8mm GAS /F	B
18	019430	GAS CONTROL PINTOSI 20S-B	A
	017803	OLIVE	
	017804	NUT	
19	034115	INJECTOR 1.15 mm LPG	C
	034185	INJECTOR 1.85mm NAT	C
	034110	INJECTOR 1.10mm BUTANE	C
	229511	INJECTOR ELBOW	
	015152	NUT	
	015153	OLIVE	
	025093	NUT FOR ELBOW	
20	231536	IGNITION ELCTRODE (Includes HT Lead) (Except UK Model from Serial No. 450638)	A
21	232067	THERMOCOUPLE 500MM	A
22	024573	THERMOCOUPLE SLEEVE NUT M8x1	D
23	227508	PIEZO - SIT (Except UK Model from Serial No. 450638)	A

*Recommended Parts Level	
RPL	Number of units in service
A	1-5
A+B	5-10
A+B+C	10-50
A+B+C+D	50+

8 Exploded Parts Diagrams

8.2.3 G91 Racking Assembly (from Ser. No. 401965)



Item	Part No.	Description	*RPL
24	026093	SIDE RACK WA - SALAMANDER	D
25	227961	SIDE RACK SCREW	D
26	013395	RACK HANDLE	C
27	017963	RACK	D
28	227950	TROUGH TRAY WA	D

*Recommended Parts Level	
RPL	Number of units in service
A	1-5
A+B	5-10
A+B+C	10-50
A+B+C+D	50+