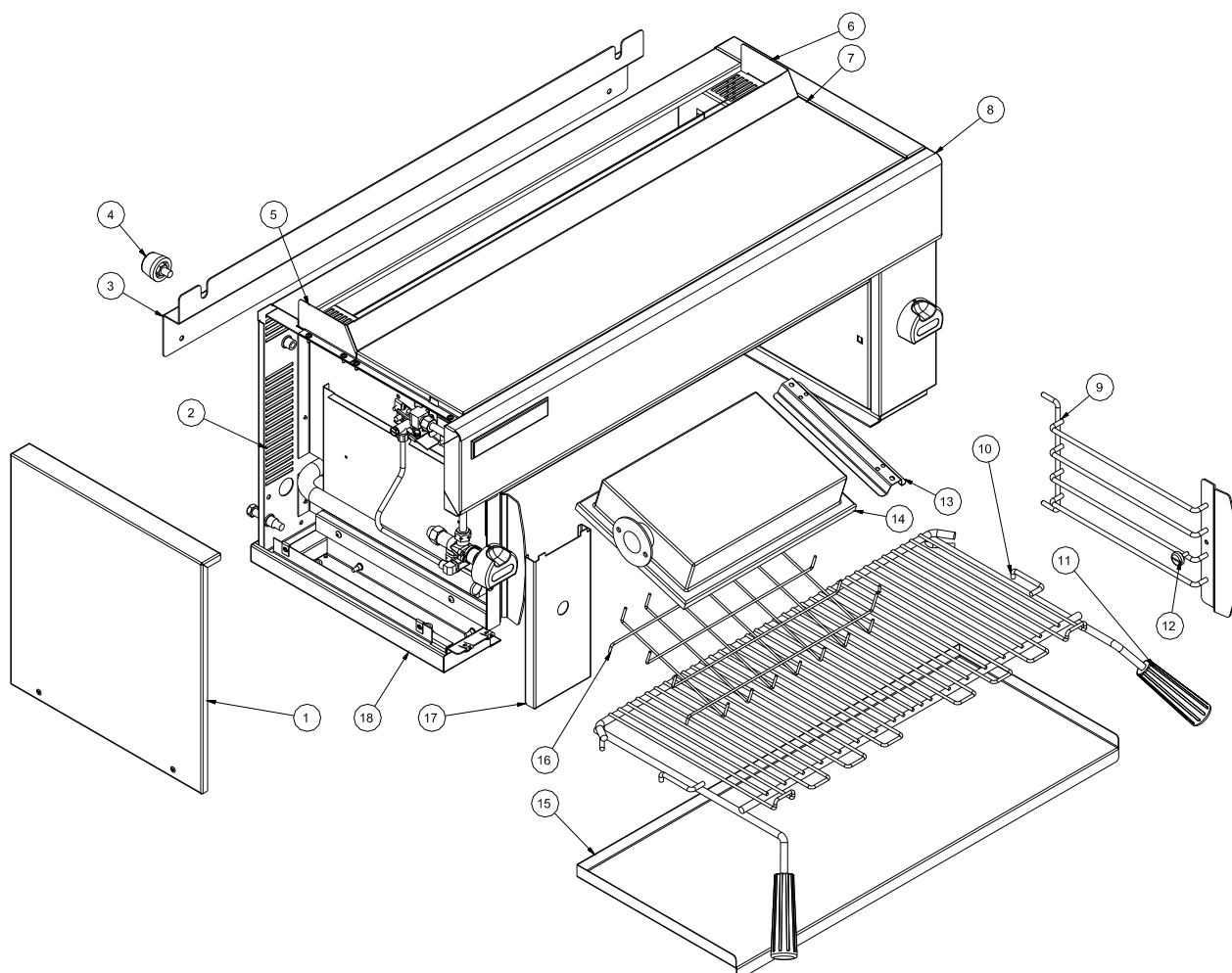


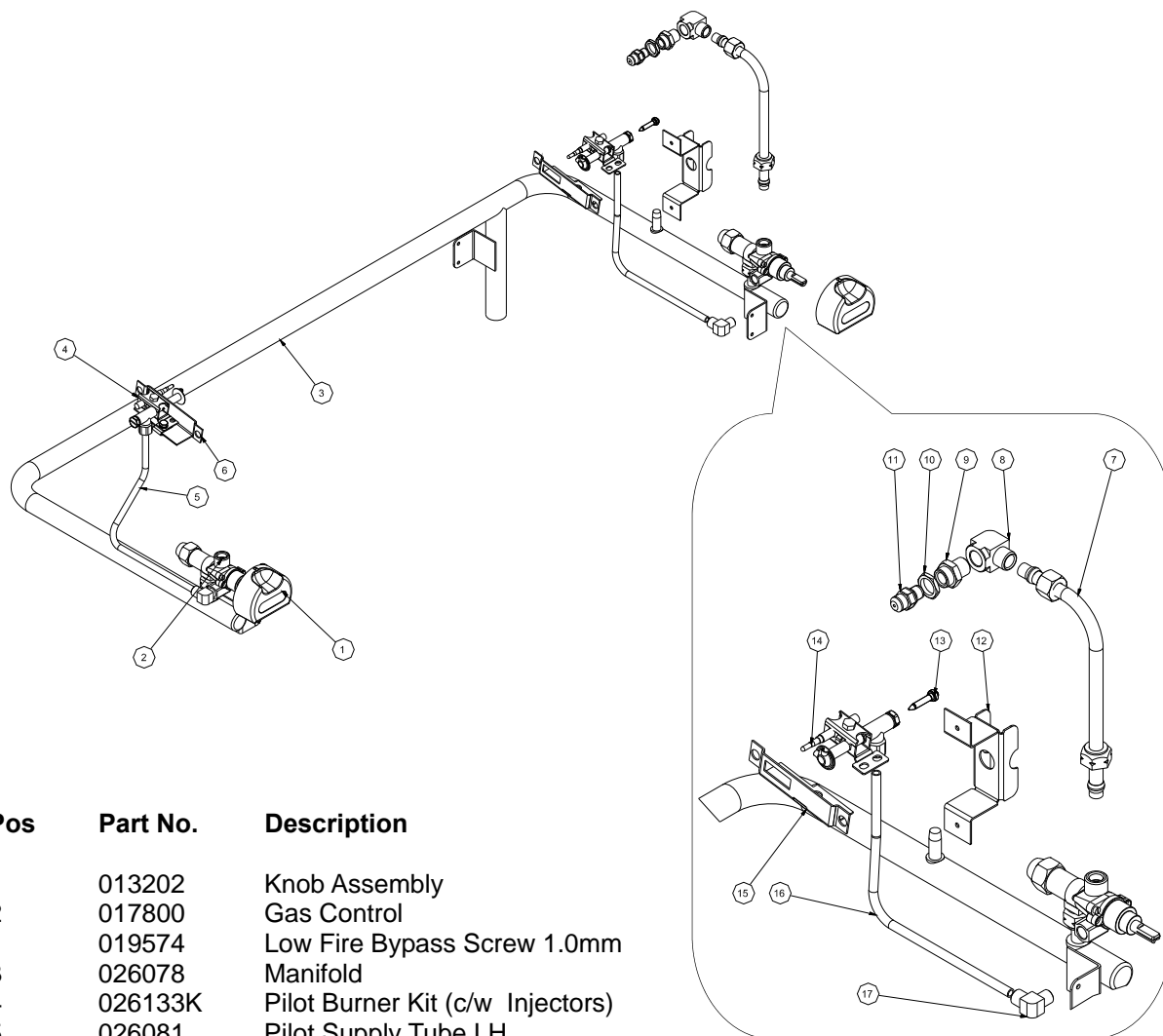
9. PARTS DIAGRAM

9.1 G91 MAIN ASSEMBLY a Ubi ZWfi fYX'Zca 'G/B'& , & , &''



| Pos | Part No. | Description |
|-----|----------|---------------------------|
| 1 | 026094 | Side Panel |
| 2 | 026086 | Back Panel |
| 3 | 026096 | Wall Mounting Bracket |
| 4 | 013908 | Spacer Assembly |
| 5 | 026089 | Flue End LH |
| 6 | 026090 | Flue End RH |
| 7 | 026113 | Top Cover Panel |
| 8 | 005013 | Front Cover WA Blue Seal |
| 9 | 026093 | Side Rack WA - Salamander |
| 10 | 017963 | Rack |
| 11 | 013395 | Rack Handle |
| 12 | 023068 | Side Rack Screw |
| 13 | 026077 | Burner Retaining Channel |
| 14 | 019214K | Infra-Red Burner Kit |
| 15 | 026095 | Crumb Tray |
| 16 | 026123 | Burner Guard |
| 17 | 005014 | Control Panel |
| 18 | 026091 | Tray Support |

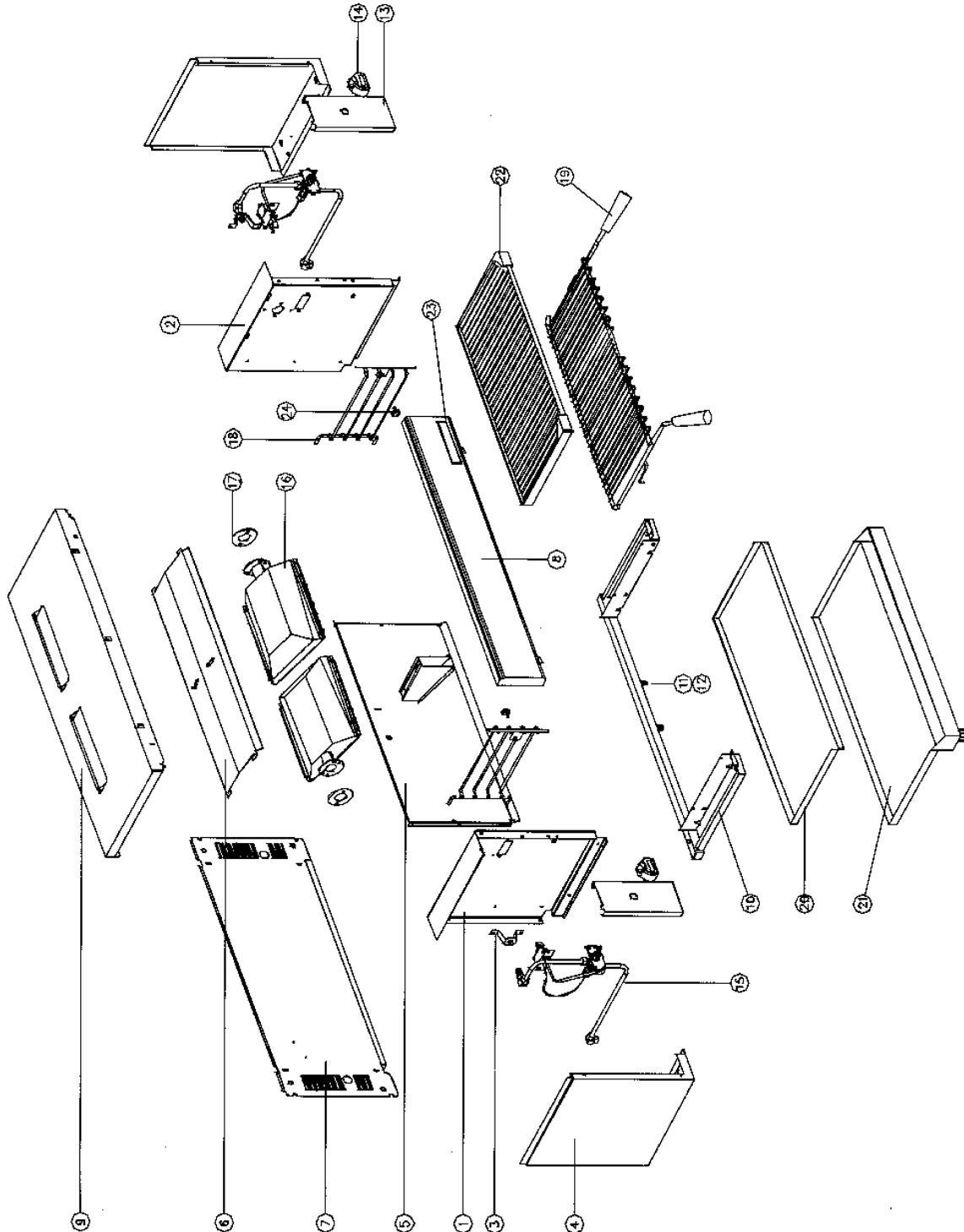
9.2 G91 GAS PIPING ASSEMBLY



| Pos | Part No. | Description |
|-----|----------|---|
| 1 | 013202 | Knob Assembly |
| 2 | 017800 | Gas Control |
| | 019574 | Low Fire Bypass Screw 1.0mm |
| 3 | 026078 | Manifold |
| 4 | 026133K | Pilot Burner Kit (c/w Injectors) |
| 5 | 026081 | Pilot Supply Tube LH |
| 6 | 026080 | Pilot Mounting Bracket LH |
| 7 | 026079 | Injector Supply Tube (pipe only) |
| | 017803 | Olive 10mm |
| | 017804 | Nut 10mm |
| | 015153 | Olive 60 x 6mm |
| | 018978 | Compression nut |
| 8 | 015155 | Elbow $\frac{3}{8}$ " Comp x $\frac{1}{4}$ " BSP Female Brass |
| 9 | 025091 | Mounting Bush |
| 10 | 025093 | Locknut M14x1 |
| 11 | 032120 | Injector LPG 1.20mm (Non-UK) |
| | 032190 | Injector Natural Gas 1.90mm (Non-UK) |
| | 032105 | Injector LPG 1.05mm (UK Only) |
| | 032165 | Injector Natural Gas 1.65mm (UK Only) |
| 12 | 026072 | Injector Mounting Bracket |
| 13 | 026134 | Pilot Injector Spud Ø0.30mm (Nat) |
| | 026136 | Pilot Injector Spud Ø0.20mm (LPG) |
| 14 | 019218 | Thermocouple 450mm |
| 15 | 026082 | Pilot Mounting Bracket RH |
| 16 | 026083 | Pilot Supply Tube RH |
| 17 | 013836 | Elbow $\frac{1}{4}$ "Tx $\frac{1}{4}$ " BSP Male |
| | 011286 | Olive 60 x 4mm |
| | 011287 | Nut 61 x 4mm |

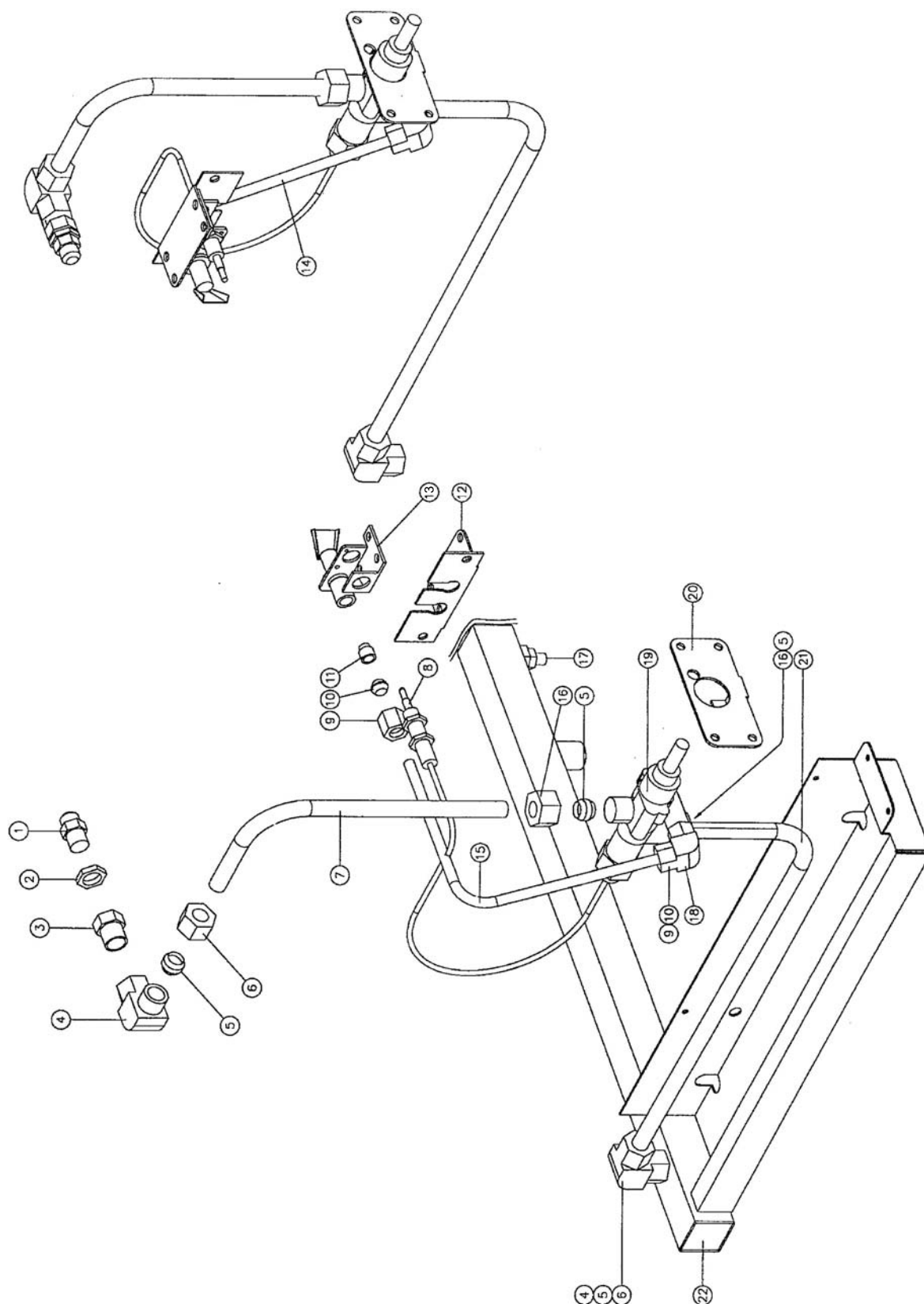
8. PARTS DIAGRAM

8.1.1 MAIN ASSEMBLY a Ubi ZWf fYX'hc`G#B`& , %



| Pos | Part No. | Description |
|----------------|----------|--|
| 1 | 004883 | INNER PANEL - L.H – FROM S/N 214584 |
| | 004040 | INNER PANEL - L.H – TO S/N 214583 |
| 2 | 004884 | INNER PANEL - R.H – FROM S/N 214584 |
| | 004041 | INNER PANEL - R.H – TO S/N 214583 |
| 3 | 017808 | INJECTOR SUPPORT BRACKET |
| 4 | 013879 | SIDE PANEL |
| 5 | 023958 | REAR REFLECTOR – FROM S/N 214584 |
| | 013332 | REAR REFLECTOR – TO S/N 214583 |
| 6 | 013331 | TOP REFLECTOR |
| 7 | 013872 | BACK PANEL |
| 8 | 004345 | FRONT COVER |
| 9 | 015487 | TOP COVER |
| 10 | 004519 | MANIFOLD |
| 11 | 019220 | PRESSURE TEST POINT |
| 12 | 011147 | REDUCING BUSH - 1/4" x 1/8" |
| 13 | 004046 | CONTROL PANEL |
| 14 | 013202 | KNOB ASSEMBLY |
| 15 | 017799 | PIPING ASSEMBLY (REFER SECTION 8.1.2) |
| 16 | 013336K | BURNER ASSEMBLY KIT (INCLUDES ITEM 17) |
| | 013366K | BURNER PLAQUE KIT - MODIFIED (INCLUDES ITEM 17) |
| | 014577 | BURNER GUARD |
| 17 | 013367 | BURNER GASKET |
| 18 | 023961 | SIDE RACK – FROM S/N 214584 |
| | 017965 | SIDE RACK – TO S/N 214583 |
| 19 | 017963 | RACK |
| | 013395 | RACK HANDLE |
| 20 | 013315 | BOTTOM TRAY |
| 21 | 004050 | TROUGH TRAY (G91B ONLY) |
| | 013362 | DRAIN VALVE (NOT SHOWN) |
| 22 | 013418 | BRANDING PLATE (G91B ONLY) |
| 23 | 004656 | NAME BADGE |
| | 013048 | LEG - 4" (NOT SHOWN) |
| | 015080 | FOOT PAD - 1" (NOT SHOWN) |
| | 013347 | WALL MOUNTING BRACKET (NOT SHOWN) |
| | 013908 | SPACER ASSEMBLY (NOT SHOWN) |
| 24 | 023068 | SIDE RACK SCREW – FROM S/N 214584 |
| GAS CONVERSION | | |
| | 012460 | NATURAL GAS TO LPG |
| | 012515 | LPG TO NATURAL GAS |

8.1.2 GAS PIPING ASSEMBLY



| Pos | Part No. | Description |
|-----|----------|---|
| 1 | 032100 | INJECTOR Ø1.00 mm - LPG |
| | 032165 | INJECTOR Ø1.65 mm - NATURAL GAS |
| 2 | 025093 | LOCKNUT (FROM S/N 246144) |
| | 011740 | JET BACKNUT (UP TO S/N 246143) |
| 3 | 025091 | MOUNTING BUSH (FROM S/N 246144) |
| | 011147 | REDUCING BUSH - 1/4" x 1/8" (UP TO S/N 246143) |
| 4 | 015155 | ELBOW 3/8" x 1/4" F |
| | 017815 | HEX NIPPLE 1/4" |
| 5 | 015153 | OLIVE - 3/8" |
| 6 | 018978 | COMPRESSION NUT |
| 7 | 017809 | INJECTOR SUPPLY PIPE |
| 8 | 013848 | THERMOCOUPLE |
| | 024573 | THERMOCOUPLE LOCK-NUT (NOT ILLUSTRATED) |
| 9 | 011287 | NUT - 1/4" |
| 10 | 011286 | OLIVE - 1/4" |
| 11 | 011650 | PILOT INJECTOR Ø0.010" - LPG |
| | 011651 | PILOT INJECTOR Ø0.018" - NATURAL GAS |
| 12 | 013342 | PILOT BRACKET |
| 13 | 020120K | PILOT BURNER KIT (INCLUDES ITEMS 9,10,11) |
| 14 | 017812 | PILOT TUBE - R.H |
| 15 | 017811 | PILOT TUBE - L.H |
| 16 | 018978 | NUT |
| 17 | 019220 | PRESSURE TEST POINT |
| 18 | 013836 | ELBOW |
| 19 | 017800 | GAS CONTROL |
| 20 | 017807 | GAS CONTROL BRACKET |
| 21 | 017810 | SUPPLY TUBE |
| 22 | 004519 | MANIFOLD |
| | 011853 | REGULATOR - NATURAL GAS ONLY (NOT ILLUSTRATED) |