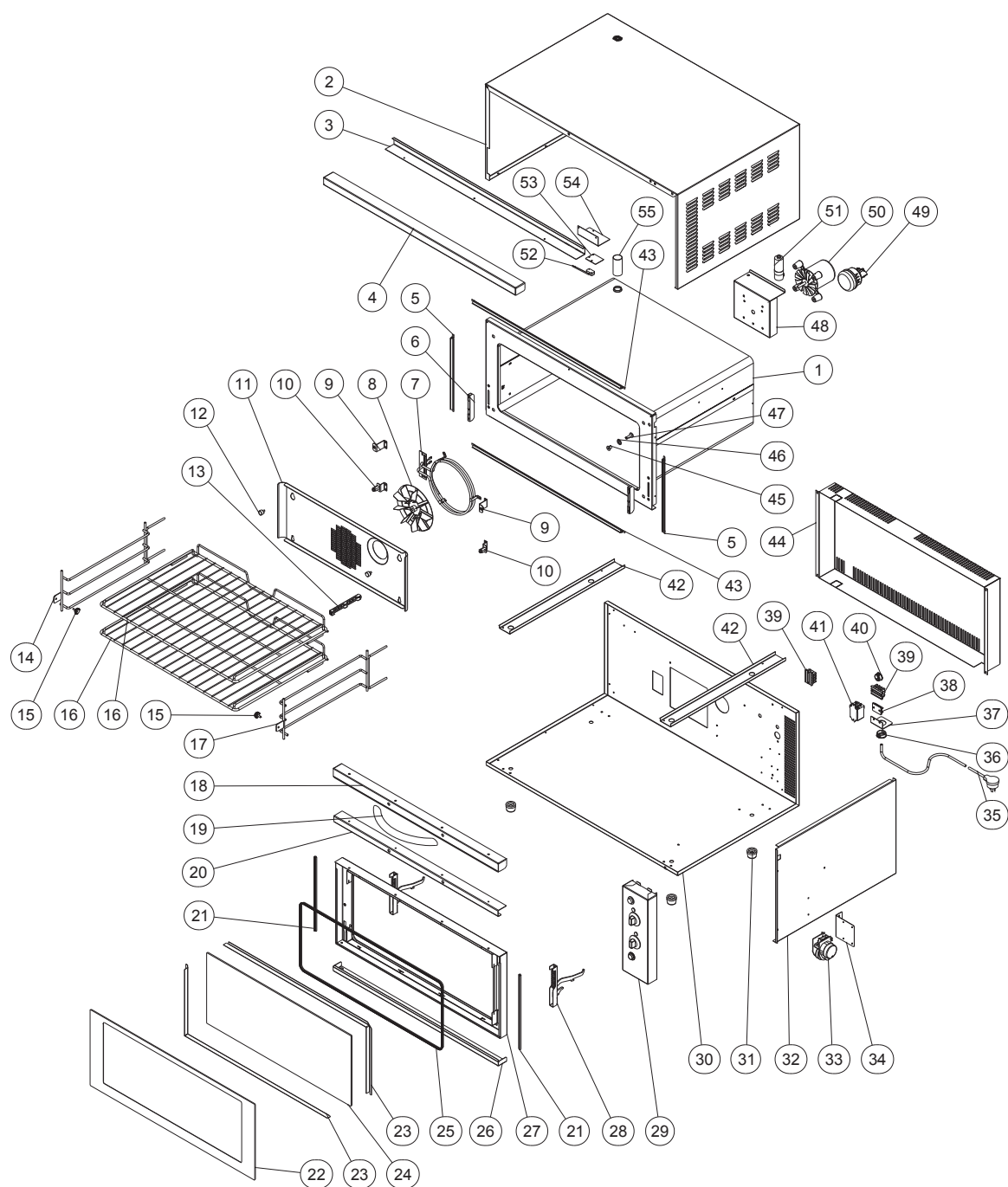


11. PARTS DIAGRAMS

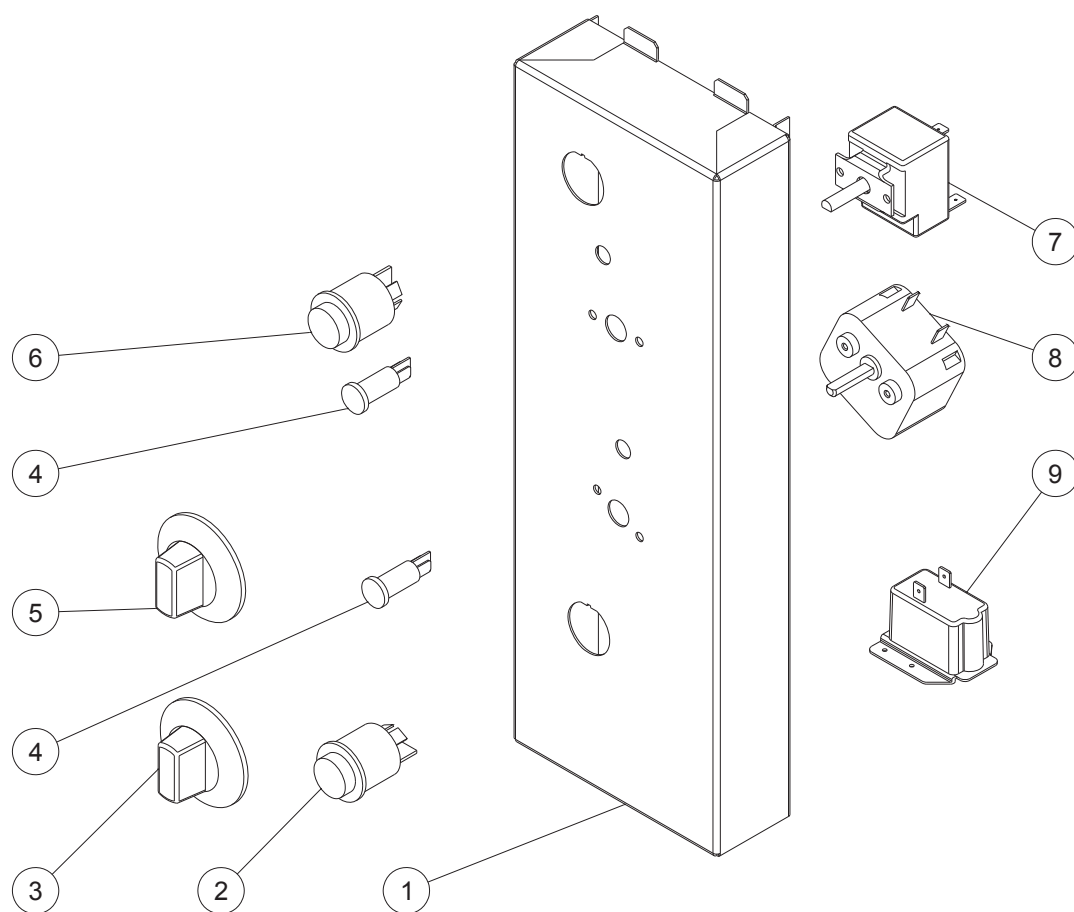
11.1 MAIN ASSEMBLY



Pos	Part No.	Description
1	004914	OVEN – ENAMELLED
2	024393	WRAPPER
3	024381	LINTEL SUPPORT
4	004913	LINTEL – ENAMELLED
5	024405	SIDE SEAL ASSEMBLY
6	023219	HINGE COUNTER BRACKET
7	024410	OVEN ELEMENT 2800W – 240V
	024409	OVEN ELEMENT 2800W – 208V
8	024433	OVEN FAN
9	024398	BAFFLE BRACKET TOP
10	024507	BAFFLE BRACKET BOTTOM
	014031	STANDOFF
11	024526	BAFFLE
12	021698	BAFFLE SCREW
13	017770	PHIAL GUARD
14	024406	LEFT HAND SIDE RACK
15	023068	SIDE RACK SCREW
16	024408	OVEN RACK (NORTH AMERICAN MODEL)
16	025349	OVEN RACK (ALL OTHER MODEL)
17	024407	RIGHT HAND SIDE RACK
18	024413	TOP TRIM (Refer Section 11.3 for E27MS Door Assembly)
19	021468	DOOR HANDLE (Refer Section 11.3 for E27MS Door Assembly)
20	024394	HANDLE STIFFENER (Refer Section 11.3 for E27MS Door Assembly)
21	024477	OUTER GLASS SEAL (Refer Section 11.3 for E27MS Door Assembly)
22	024377	DOOR OUTER GLASS (Refer Section 11.3 for E27MS Door Assembly)
23	004919	GLASS CLAMP ANGLE (Refer Section 11.3 for E27MS Door Assembly)
24	024378	DOOR INNER GLASS (Refer Section 11.3 for E27MS Door Assembly)
	090201	INNER GLASS SEAL (Per meter)
25	024392	INNER GLASS SEAL (Refer Section 11.3 for E27MS Door Assembly)
26	024414	BOTTOM TRIM (Refer Section 11.3 for E27MS Door Assembly)
27	004918	DOOR INNER PANEL (Refer Section 11.3 for E27MS Door Assembly)
28	023218	HINGE
29	SA1550	CONTROL PANEL ASSEMBLY BAKBAR (REFER SECTION 11.2)
	SA1549	CONTROL PANEL ASSEMBLY BLUE SEAL (REFER SECTION 11.2)
	SA1551	CONTROL PANEL ASSEMBLY MOFFAT (REFER SECTION 11.2)
30	024394	OVEN BODY
31	013908	FOOT ASSEMBLY
32	024396	INSULATION PANEL
33	024503	MOTOR TIMER 208-220V
	024567	MOTOR TIMER 220-240V
34	024504	MOTOR TIMER MOUNTING BRACKET
35	017185	CORDSET 15A – NZ/AUST
	010162	POWERFLEX CORD 15A – EXPORT
	017453	CORDSET 13A FUSED – UK
	012206	CORDSET 15A – USA/CANADA
36	019213	SNAP BUSH 32mm
37	018251	CABLE ENTRY BRACKET
38	002138	CABLE CLAMP
	002441	INSULATOR
39	013586	TERMINAL BLOCK
40	019238	SNAP BUSH 26mm
41	024505	RELAY 30A
42	024395	FOOT CHANNEL
43	024404	OVEN TOP/BOTTOM SEAL ASSEMBLY
44	024379	COVER PANEL
45	013610	MICROSWITCH BUTTON
	021638	PIN CIRCLIP

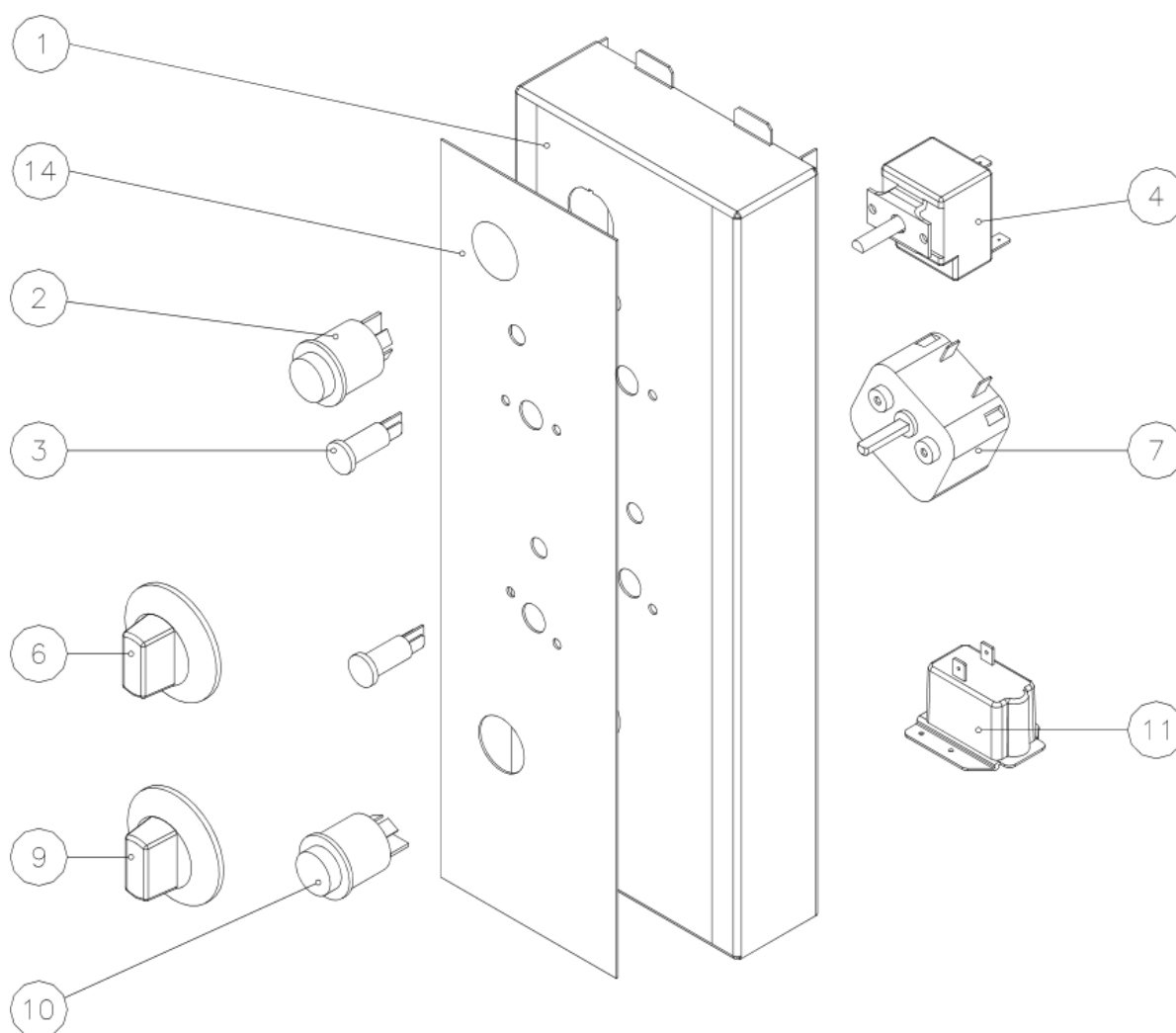
46	044210	SPIRE CLIP
47	021637	DOOR BUSH
48	003016	MOTOR MOUNTING PLATE
49	013520	OVEN LAMP ASSEMBLY
	003434	SILK GASKET
	013521	LAMP 40W
	003002	LIGHT GLASS
50	024431	MOTOR
	024478	MOTOR SHAFT SEAL
51	024432	CAPACITOR 3 μ F
52	003004	MICROSWITCH
53	013977	INSULATOR
54	023093	MICROSWITCH MOUNTING BRACKET
55	024399	VENT TUBE

11.2.1 CONTROL PANEL ASSEMBLY - E27



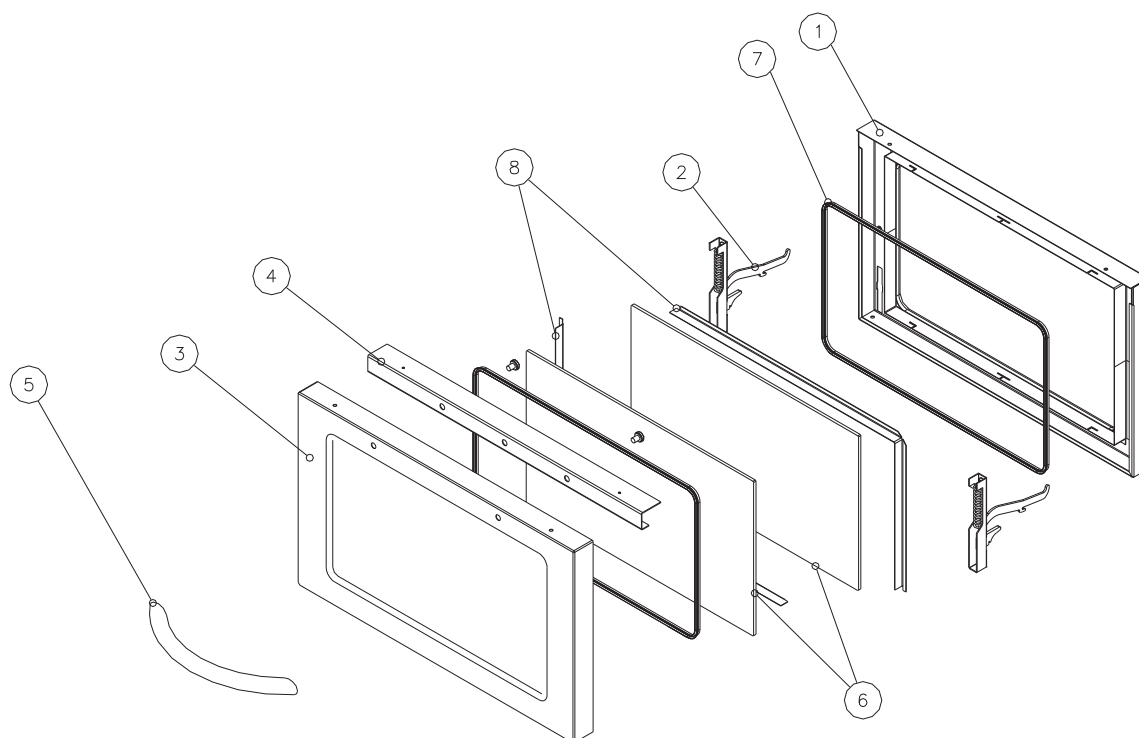
Pos	Part No.	Description
1	004916	CONTROL PANEL °C – BAKBAR
	004915	CONTROL PANEL °C – BLUE SEAL
	004917	CONTROL PANEL °F – MOFFAT
2	021474	LIGHT SWITCH
3	020823	TIMER KNOB
4	020849	INDICATOR NEON
5	021472	THERMOSTAT KNOB
6	021473	POWER SWITCH
7	023211	THERMOSTAT 50-250°C (120-480°F)
8	011760	TIMER – 60 MIN
9	011794	BUZZER

11.2.2 CONTROL PANEL ASSEMBLY - E27MS



Pos	Part No.	Description
1	026487	CONTROL PANEL
2	021473	POWER SWITCH
3	020849	INDICATOR NEON
4	023211	THERMOSTAT
6	021472	KNOB - THERMOSTAT
7	011760	1 HOUR TIMER
9	020823	KNOB - TIMER
10	021474	LIGHT SWITCH
11	011794	BUZZER
14	026613	OVERLAY - BLUE SEAL
	026496	OVERLAY - MOFFAT

11.3 E27MS DOOR ASSEMBLY



Pos	Part No.	Description
1	005038	DOOR INNER WA
2	023218	HINGE
3	026485	DOOR OUTER PANEL
4	026579	HANDLE STIFFENER
5	026498	DOOR HANDLE PLATED
6	024378	DOOR INNER GLASS
7	024392	INNER GLASS SEAL
	090201	INNER GLASS SEAL (Per meter)
8	026492	GLASS CLAMP ANGLE