
9. SPARE PARTS

PART NO	DESCRIPTION
---------	-------------

CONTROLS

021473	Switch - Power
023211	Thermostat
021472	Knob - Thermostat
020823	Knob - Bake Timer
020849	Neon Indicator
023212	Bake Timer Coupatan (To S/N 228661)
011760	Bake Timer Diehl (From S/N 228662)
011794	Buzzer
021474	Light Switch
003004	Microswitch
003002	Oven Lamp Glass
013520	Oven Lamp Assembly
013521	Oven Lamp - 240V 40W Miniature Edison Screw

MOTOR & ELEMENTS

023371	Oven Fan Element (240V)
023372	Oven Fan Element (220V)
013431K	Fan Motor (220 - 240V) (From S/N 250979)
022042	Fan
023215	Fan Motor (c/w fan) (Up to S/N 250978)

DOOR

023099	Oven Door Seal Strip Side
023192	Oven Door Seal Strip Top/Bottom
021468	Handle
023187	Handle Stiffener
023064	Door Outer Glass
023065	Door Inner Glass
023218	Door Hinge

RACKS/BAFFLES

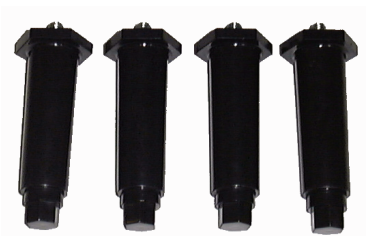
024835	Oven Side Rack LH
024836	Oven Side Rack RH
023068	Side Rack Screw
023273	Oven Rack
023382	Fan Baffle
023068	Fan Baffle Screw
004869	Bottom Baffle

10. ACCESSORIES

OVEN RACKS (PART NO 023273)



100 MM (FOUR INCH) FOOT OPTION (PART NO 13048)

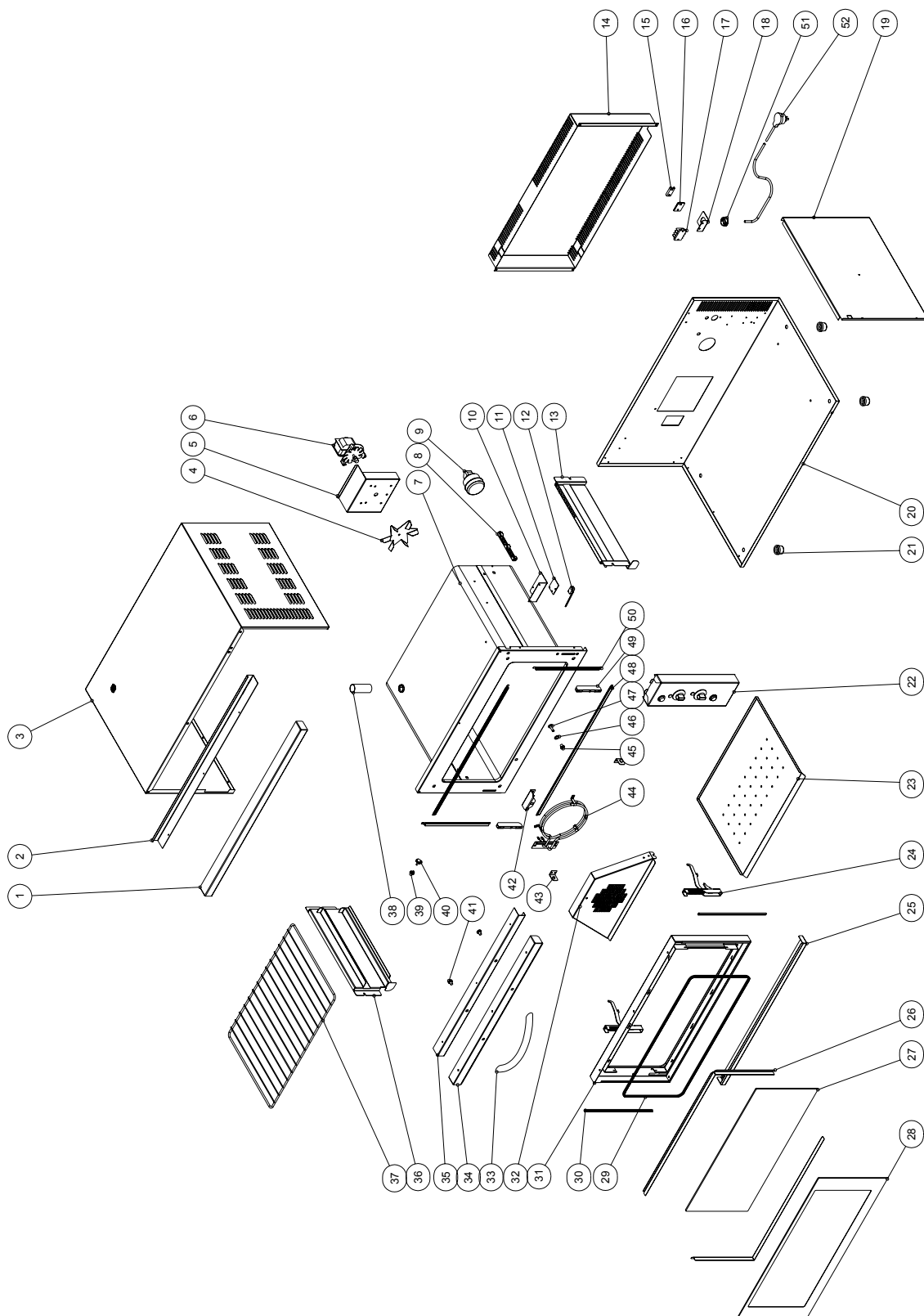


25 MM (ONE INCH) FOOT OPTION (PART NO 13908)



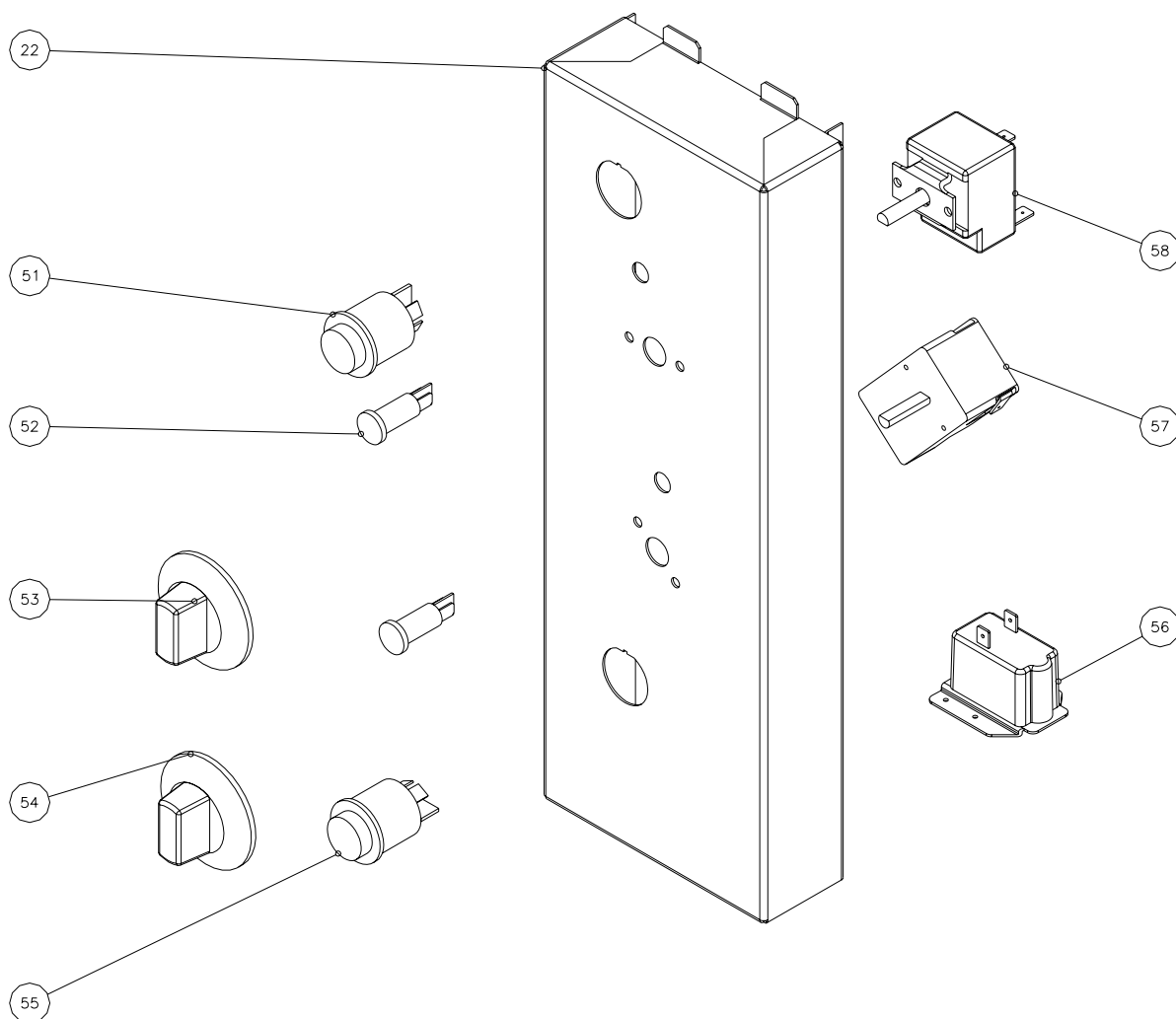
11. PARTS DIAGRAMS

11.1 MAIN ASSEMBLY - E26



Pos	Part No.	Description
1	004856	LINTEL
2	023172	LINTEL SUPPORT
3	023184	WRAPPER
4	-----	FAN (Refer Item 6)
5	003016	MOTOR PLATE
6	013431K	MOTOR (From S/N 250979)
	022042	FAN
	023215	MOTOR / FAN (Up to S/N 250978)
7	004858	OVEN
8	017770	PHIAL GUARD
9	013520	OVEN LIGHT ASSEMBLY
10	023093	MICROSWITCH MOUNTING BRACKET
11	013977	MICROSWITCH INSULATION
12	003004	MICROSWITCH
13	024836	RH SIDE RACK
14	023170	COVER PANEL
15	002138	CABLE CLAMP
16	002441	INSULATOR
17	013586	TERMINAL BLOCK
18	018251	CABLE ENTRY
19	023186	INSULATION PANEL
20	023185	BODY
21	013908	FOOT
22	004852	CONTROL PANEL
23	004869	BOTTOM BAFFLE
24	023218	DOOR HINGE
25	023284	BOTTOM TRIM
26	004862	GLASS CLAMP ANGLE
27	023065	INNER GLASS
28	023064	OUTER GLASS
29	023229	INNER GLASS SEAL
	090201	INNER GLASS SEAL (Per meter)
30	023230	OUTER GLASS SEAL
31	004855	DOOR INNER PANEL
32	023382	BAFFLE RA
33	021468	DOOR HANDLE
34	023283	TOP TRIM
35	023187	HANDLE STIFFENER
36	024835	LH SIDE RACK
37	023273	OVEN RACK
38	023095	VENT TUBE
39	044215	CAGE NUT
40	023068	SIDE RACK SCREW
41	041410	M8 X 20
42	023387	BAFFLE SUPPORT
43	023384	BAFFLE PIVOT WA
44	023371	FAN ELEMENT 2.4 kW 240V
	023372	FAN ELEMENT 2.4 kW 220V
45	013610	DOOR BUSH
46	044210	SPIRE CLIP
47	021637	MICROSWITCH BUTTON
48	023192	TOP SEAL
49	023219	HINGE COUNTER BRACKET
50	023099	SIDE SEAL
51	019213	SNAP BUSH - 32mm
52	002414	10A CORDSET (AUSTRALIA / NEW ZEALAND ONLY)
	017453	13A FUSED CORDSET (UK ONLY)

11.2 CONTROL PANEL ASSEMBLY - E26



Pos	Part No.	Description
22	004853	CONTROL PANEL—BAKBAR
22	004852	CONTROL PANEL—BLUE SEAL
51	021473	POWER SWITCH
52	020849	NEON
53	021472	KNOB THERMOSTAT
54	020823	KNOB TIMER
55	021474	LIGHT SWITCH
56	011794	BUZZER
57	023212	TIMER COUPATAN 60 MINUTE - TO S/N 228661
	011760	TIMER DIEHL 60 MINUTE - FROM S/N 228662
58	023211	THERMOSTAT