

## 9. SPARE PARTS

### PART NO DESCRIPTION

#### CONTROLS

021473	Switch - Power (220-240V)
021514	Switch - Power (110V)
023211	Thermostat (E25 only)
017121	Thermostat (E25B only)
021472	Knob - Thermostat (E25 only)
020823	Knob - Thermostat (E25B only)
020823	Knob - Bake Timer
020849	Neon Indicator
023212	Bake Timer - Coupatan (To S/N 228661)
011760	Bake Timer - Diehl (From S/N 228662)
011794	Buzzer (220-240V)
015822	Buzzer (110V)
021474	Light Switch
023213	Relay (E25B only)
003004	Microswitch
013520	Oven Lamp Assembly (220-240V)
023216	Oven Lamp Assembly (110V)
013521	Oven Lamp (220-240V) 40W Miniature Edison Screw
-----	Oven Lamp (110V) 40W Edison Screw

#### MOTOR & ELEMENTS

023071	Oven Fan Element (E25 only) (240 volt)
023069	Oven Fan Element (E25 only) (110 volt)
023072	Oven Top Element (E25B only) (110 volt)
023070	Oven Fan Element (E25B only) (110 volt)
013431K	Fan Motor (220-240V) (From S/N 251948)
022042	Fan (From S/N 251948)
023215	Fan Motor c/w Fan (220-240V) (Up to S/N 251947)
025387K	Fan Motor (110V)

#### DOOR

023099	Oven Door Seal Strip Side
014226	Oven Door Seal Strip Top / Bottom
021468	Handle (E25)
026498	Handle (E25MS)
023062	Door Outer Glass (E25)
023063	Door Inner Glass (E25)
023063	Door Glass Inner and Outer (E25MS)
023217	Door Hinge

#### RACKS / BAFFLES

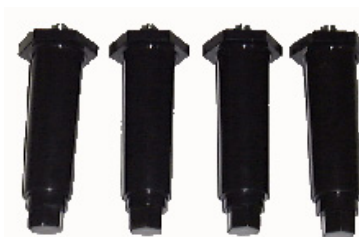
023066	Oven Side Rack LH
023067	Oven Side Rack RH
023068	Side Rack Screw
012809	Wire Oven Rack
023382	Fan Baffle
023068	Fan Baffle Screw
004868	Bottom Baffle

## 10. ACCESSORIES

**OVEN RACKS (PART NO 12809)**



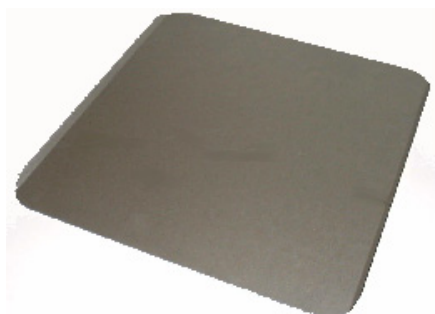
**100 MM (FOUR INCH) FOOT OPTION  
(PART NO 13048)**



**25 MM (ONE INCH) FOOT OPTION (PART  
NO 13908)**



**SCONE TRAYS (PART NO 02083)**



**DOUBLE STACKING KIT (PART NO 24290)**

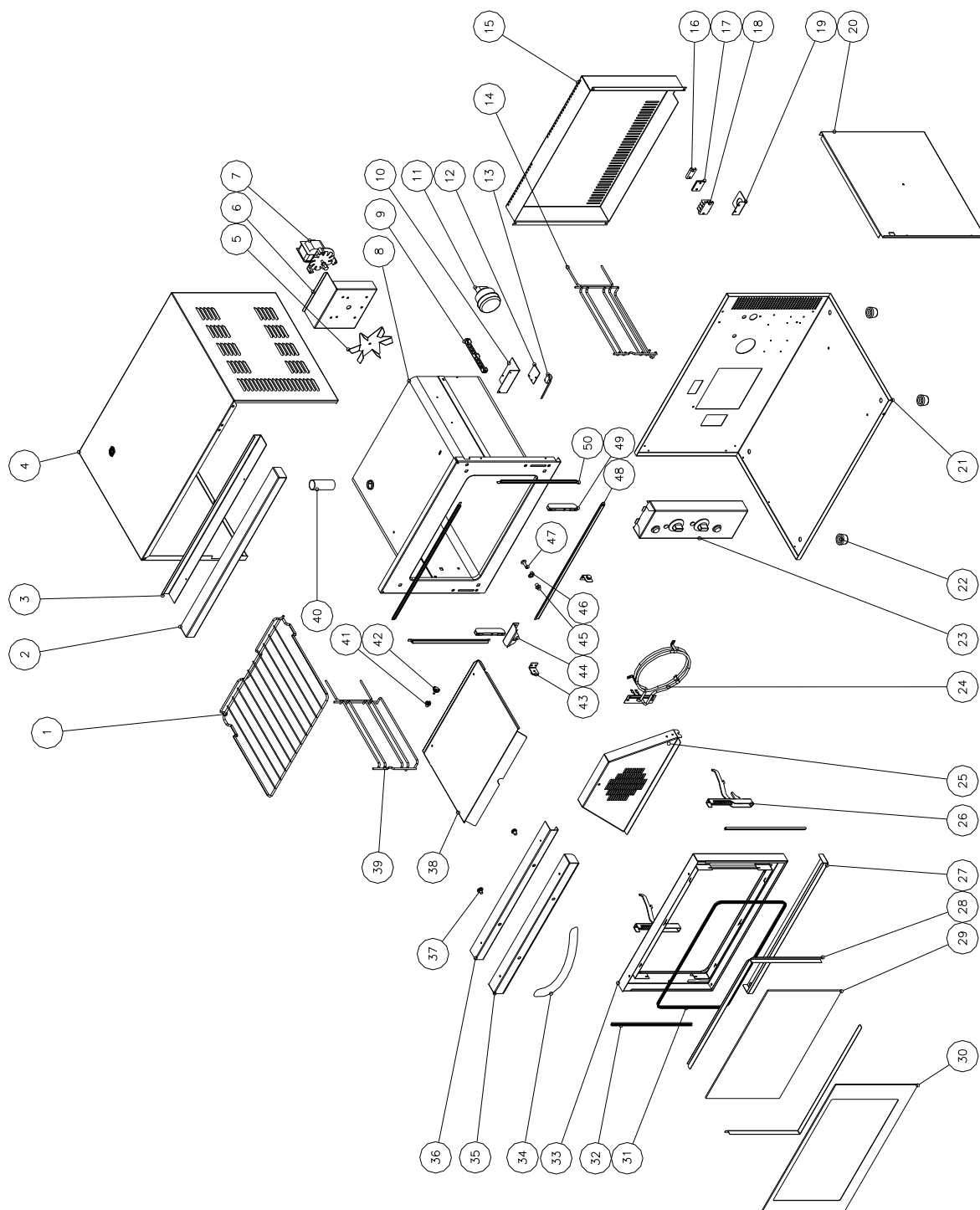


**A25 STAINLESS STEEL STAND**



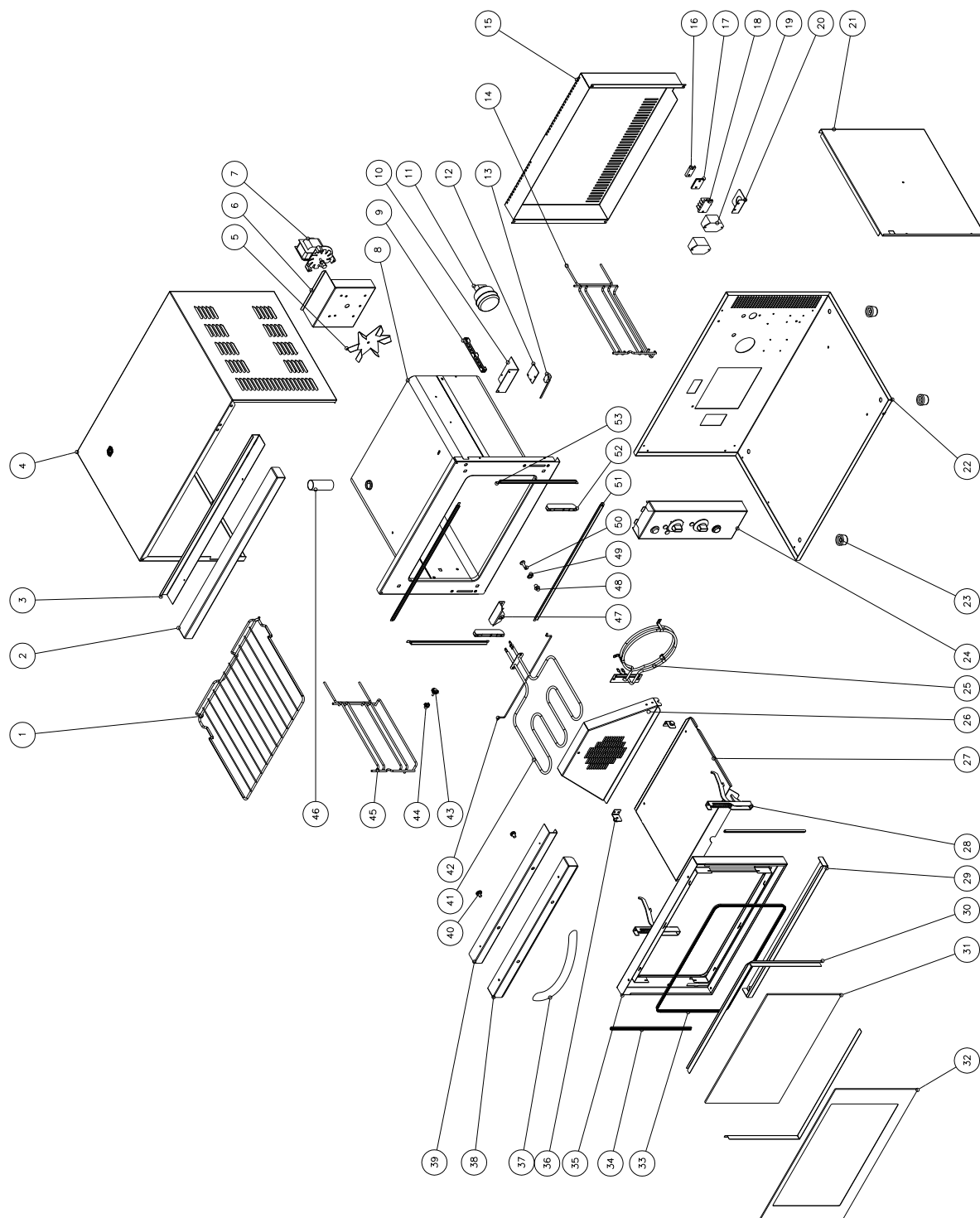
# 11. PARTS DIAGRAMS

## 11.1 MAIN ASSEMBLY - E25



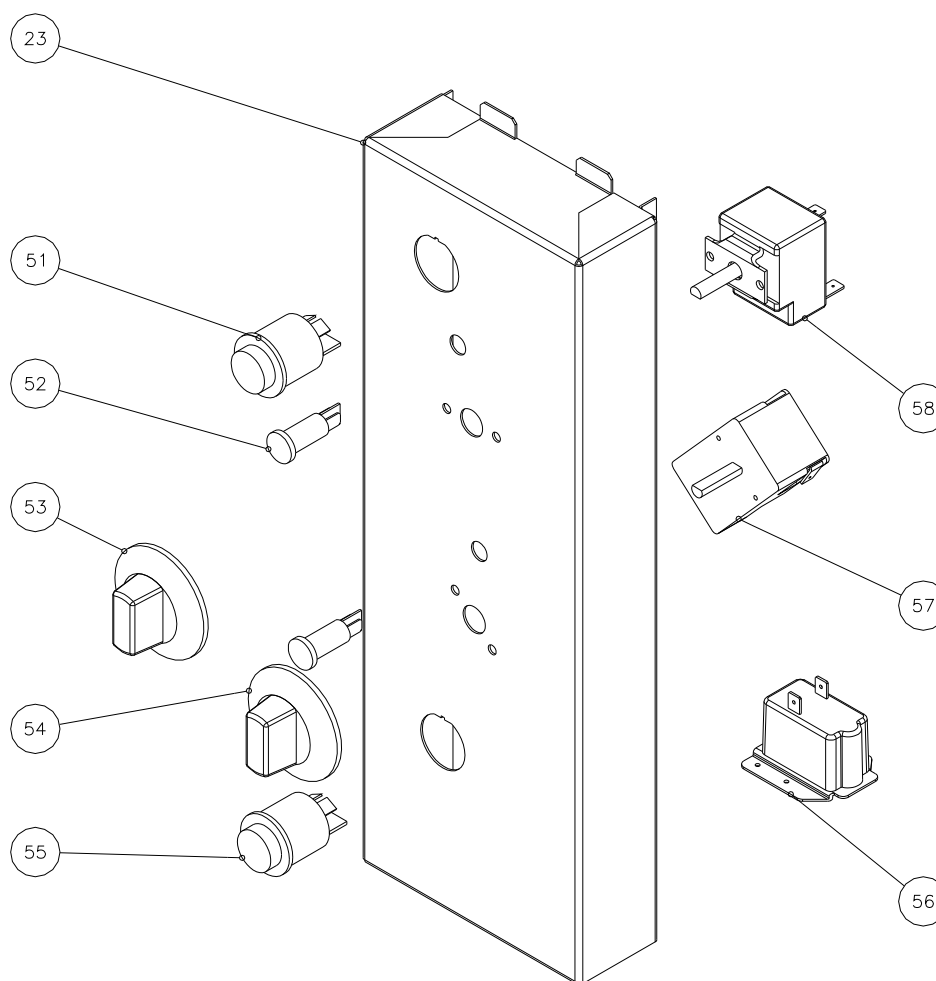
Pos	Part No.	Description
1	012809	OVEN RACK
2	011402	PIVOT TOP COVER - E25 / E25B
	005040	PIVOT TOP COVER - E25MS / E25BMS
3	023074	LINTEL SUPPORT
4	023087	WRAPPER
5	022042	FAN
6	003016	MOTOR PLATE
7	013431K	MOTOR - 240V (From S/N 251948)
	023215	MOTOR – 240V (Up to S/N 251947)
7	025387K	MOTOR – 110V
8	004857	OVEN
9	017770	PHIAL GUARD
10	023093	MICROSWITCH MOUNTING BRACKET
11	013520	OVEN LIGHT ASSEMBLY – 240V
11	023216	OVEN LIGHT ASSEMBLY – 110V
12	013977	MICROSWITCH INSULATION
13	003004	MICROSWITCH
14	023067	SIDE RACK RH
15	023073	COVER PANEL
16	002138	CABLE CLAMP
17	002441	INSULATOR
18	013586	TERMINAL BLOCK
19	018251	CABLE ENTRY
20	023089	INSULATION PANEL
21	023088	BODY
22	013908	FOOT
23	-----	CONTROL PANEL (Refer to section 11.3 / 11.4)
24	023071	FAN ELEMENT – 240V
24	023069	FAN ELEMENT – 110V
25	023382	BAFFLE RA
26	023217	DOOR HINGE
27	023282	BOTTOM TRIM
28	023091	GLASS CLAMP ANGLE (Refer to section 11.5 for E25MS door)
29	023063	INNER GLASS (Refer to section 11.5 for E25MS door)
30	023062	OUTER GLASS (Refer to section 11.5 for E25MS door)
31	023228	INNER GLASS SEAL (Refer to section 11.5 for E25MS door)
	090201	INNER GLASS SEAL (Per meter)
32	023230	OUTER GLASS SEAL (Refer to section 11.5 for E25MS door)
33	004854	DOOR INNER PANEL (Refer to section 11.5 for E25MS door)
34	021468	DOOR HANDLE (Refer to section 11.5 for E25MS door)
35	023281	TOP TRIM (Refer to section 11.5 for E25MS door)
36	023090	HANDLE STIFFENER (Refer to section 11.5 for E25MS door)
37	041410	M8 X 20
38	004868	BOTTOM BAFFLE
39	023066	SIDE RACK LH
40	023095	VENT TUBE
41	044215	CAGE NUT
42	023068	SIDE RACK SCREW
43	023384	BAFFLE PIVOT WA
44	023387	BAFFLE SUPPORT
45	013610	DOOR BUSH
46	044210	SPIRE CLIP
47	021637	MICROSWITCH BUTTON
48	014226	TOP SEAL
49	023219	HINGE COUNTER BRACKET
50	023099	SIDE SEAL

## 11.2 MAIN ASSEMBLY - E25B (110V ONLY)



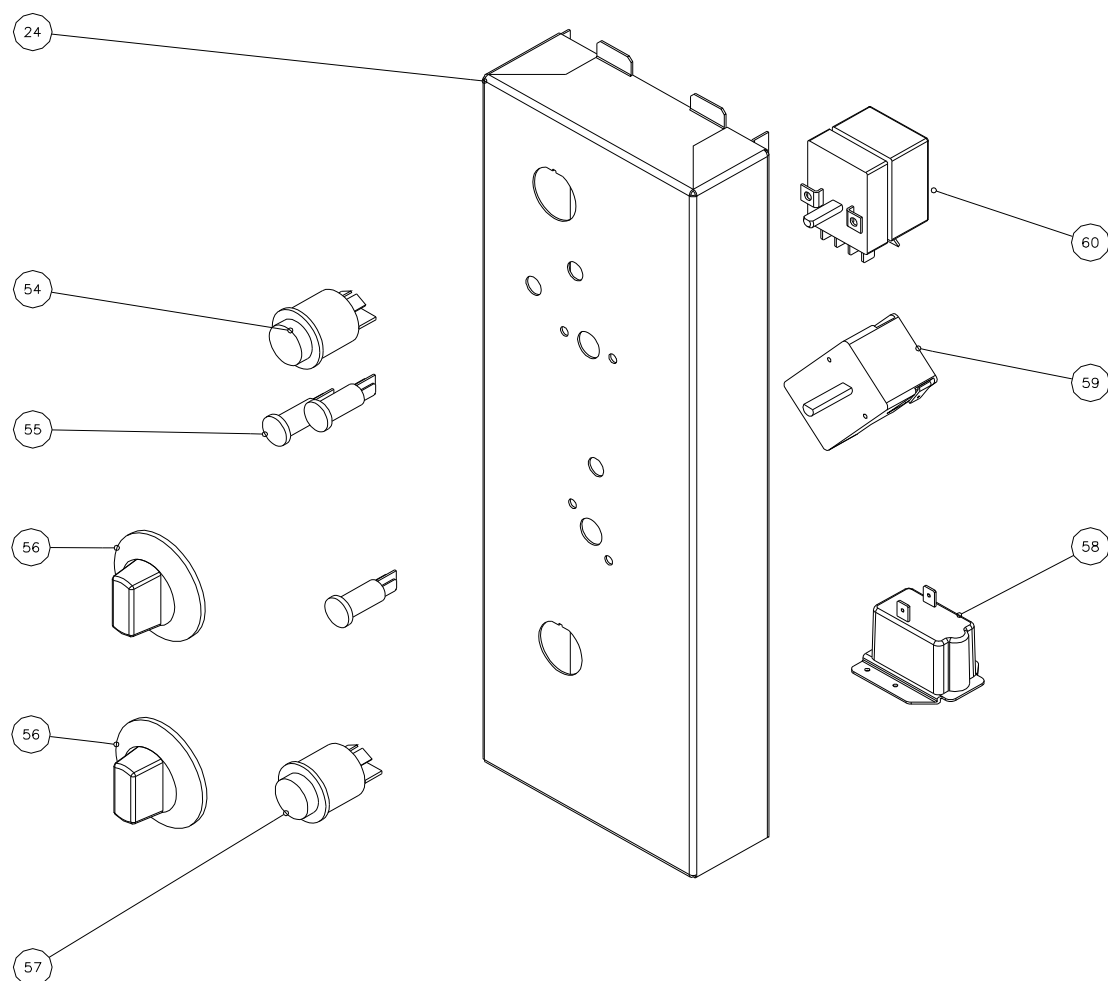
Pos	Part No.	Description
1	012809	OVEN RACK
2	011402	PIVOT TOP COVER - E25 / E25B
	005040	PIVOT TOP COVER - E25MS / E25BMS
3	023074	LINTEL SUPPORT
4	023087	WRAPPER
5	022042	FAN
6	003016	MOTOR PLATE
7	025387	MOTOR (110V)
8	023075	OVEN
9	017770	PHIAL GUARD
10	023093	MICROSWITCH MOUNTING BRACKET
11	023216	OVEN LIGHT ASSEMBLY (110V)
12	013977	MICROSWITCH INSULATION
13	003004	MICROSWITCH
14	023067	SIDE RACK RH
15	023073	COVER PANEL
16	002138	CABLE CLAMP
17	002441	INSULATOR
18	013586	TERMINAL BLOCK
19	023213	RELAY (110V)
20	018251	CABLE ENTRY
21	023089	INSULATION PANEL
22	023088	BODY
23	013908	FOOT
24	-----	CONTROL PANEL (refer to section 11.3 / 11.4)
25	023070	FAN ELEMENT (110V)
26	023382	BAFFLE RA
27	023389	BOTTOM BAFFLE
28	023217	DOOR HINGE
29	023282	BOTTOM TRIM
30	023091	GLASS CLAMP ANGLE (Refer to section 11.5 for E25MS door)
31	023063	INNER GLASS (Refer to section 11.5 for E25MS door)
32	023062	OUTER GLASS (Refer to section 11.5 for E25MS door)
33	023228	INNER GLASS SEAL (Refer to section 11.5 for E25MS door)
	090201	INNER GLASS SEAL (Per meter)
34	023230	OUTER GLASS SEAL (Refer to section 11.5 for E25MS door)
35	004854	DOOR INNER PANEL (Refer to section 11.5 for E25MS door)
36	023384	BAFFLE PIVOT WA (Refer to section 11.5 for E25MS door)
37	021468	DOOR HANDLE (Refer to section 11.5 for E25MS door)
38	023281	TOP TRIM (Refer to section 11.5 for E25MS door)
39	023090	HANDLE STIFFENER (Refer to section 11.5 for E25MS door)
40	041410	M8 X 20
41	023072	GRILL ELEMENT (110V)
42	003219	ELEMENT SUPPORT
43	023068	SIDE RACK SCREW
44	044215	CAGE NUT
45	023066	SIDE RACK LH
46	023095	VENT TUBE
47	023387	BAFFLE SUPPORT
48	013610	DOOR BUSH
49	044210	SPIRE CLIP
50	021637	MICROSWITCH BUTTON
51	014226	TOP SEAL
52	023219	HINGE COUNTER BRACKET
53	023099	SIDE SEAL

### 11.3.1 CONTROL PANEL ASSEMBLY - E25



Pos	Part No.	Description
23	004851	CONTROL PANEL - BAKBAR
	004880	CONTROL PANEL - BLUE SEAL
	004850	CONTROL PANEL - MOFFAT
51	021473	POWER SWITCH – 240V
51	021514	POWER SWITCH – 110V
52	020849	NEON INDICATOR - 240V
	023857	NEON INDICATOR - 110V
53	021472	KNOB
54	020823	KNOB
55	021474	LIGHT SWITCH
56	011794	BUZZER – 240V
56	015822	BUZZER – 110V
57	023212	TIMER - COUPATAN (TO S/N 228661)
	011760	TIMER - DIEHL (FROM S/N 228662)
58	023211	THERMOSTAT

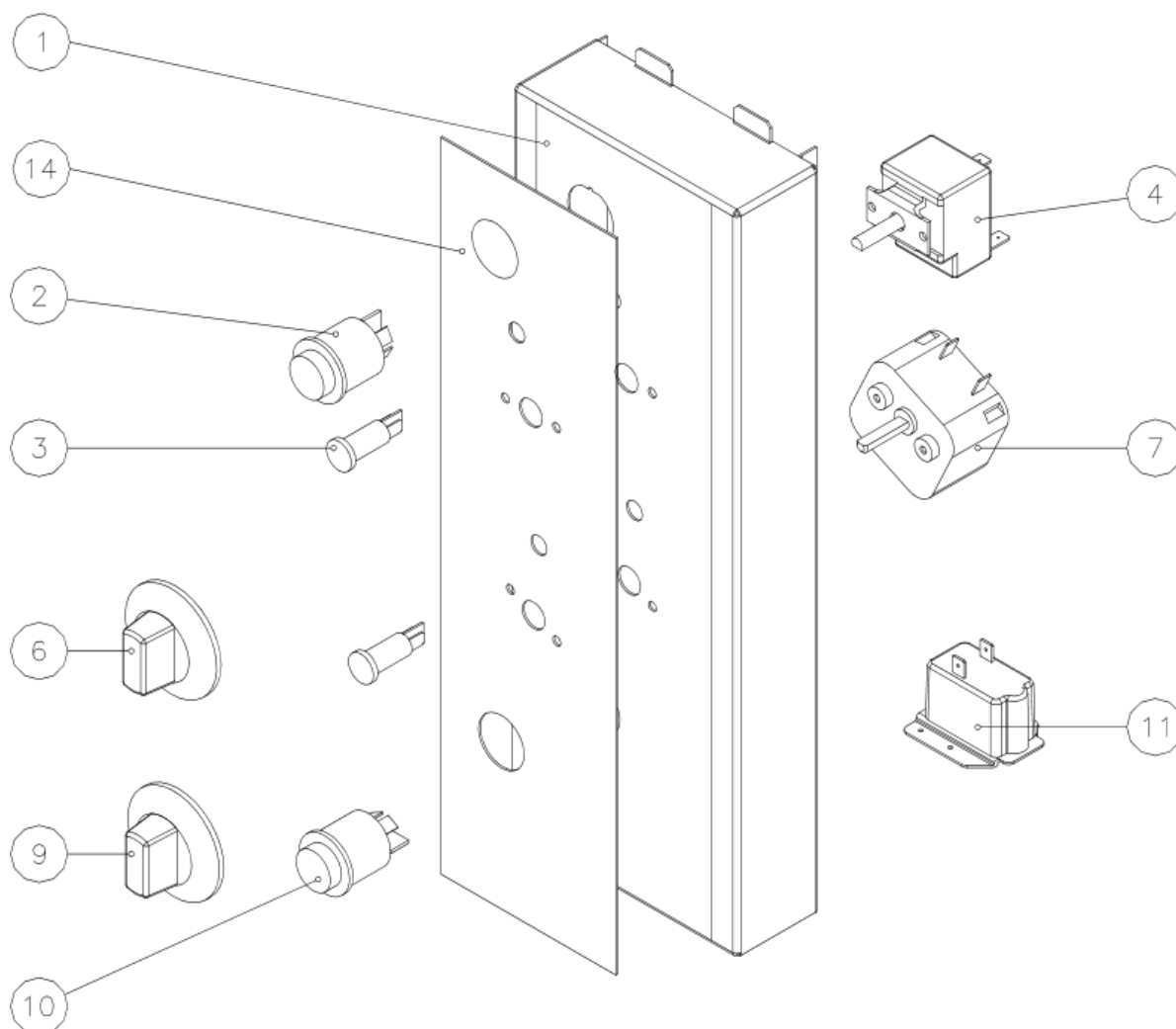
### 11.3.2 CONTROL PANEL ASSEMBLY - E25B (110V ONLY)



Pos	Part No.	Description
24	004849	CONTROL PANEL - MOFFAT
54	021514	POWER SWITCH - 110V
55	023857	NEON - 110V
56	020823	KNOB
57	021474	LIGHT SWITCH
58	015822	BUZZER - 110V
59	023212	TIMER - COUPATAN (TO S/N 228661)
	011760	TIMER - DIEHL (FROM S/N 228662)
60	017121	THERMOSTAT

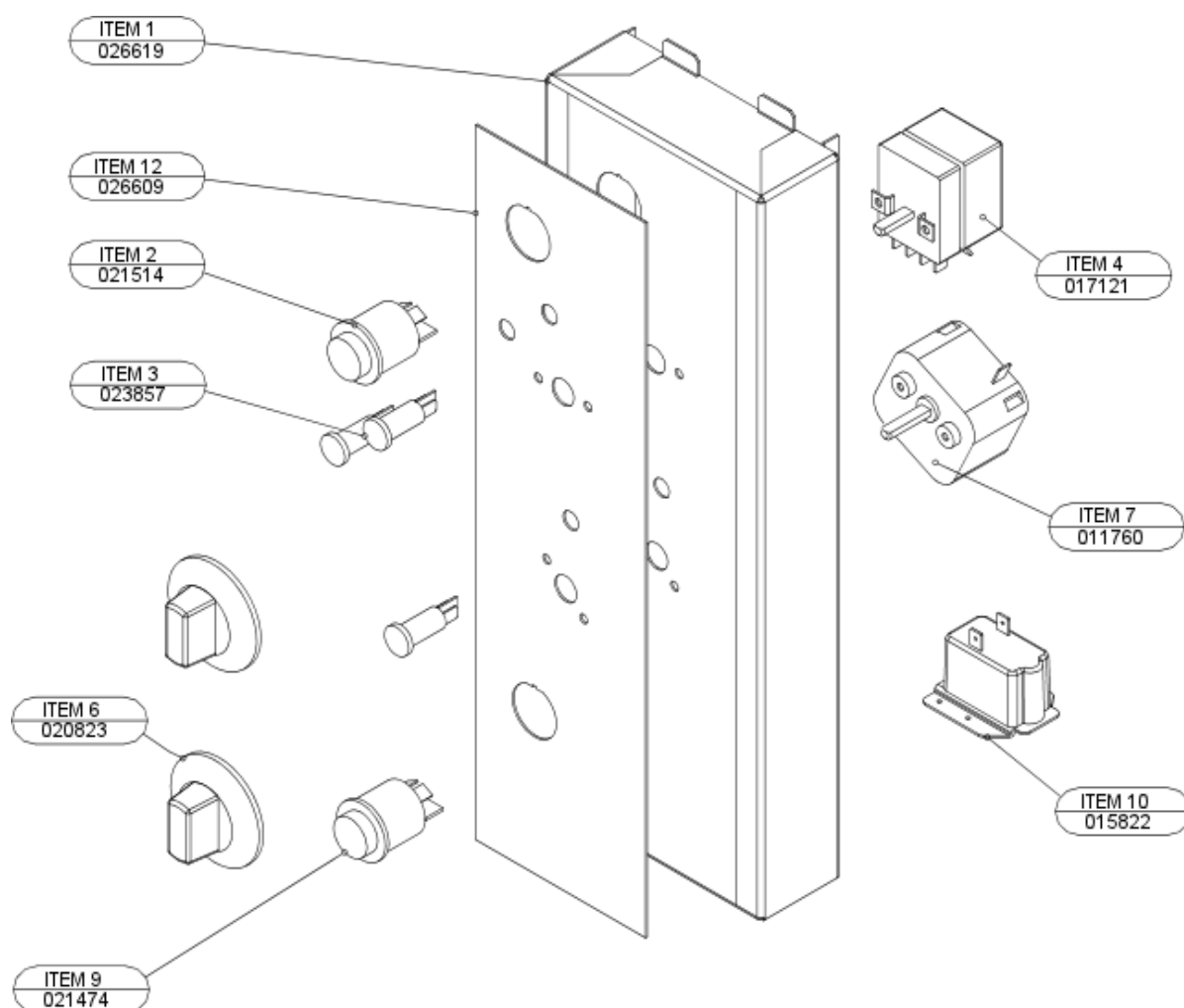


### 11.4.1 CONTROL PANEL ASSEMBLY - E25MS



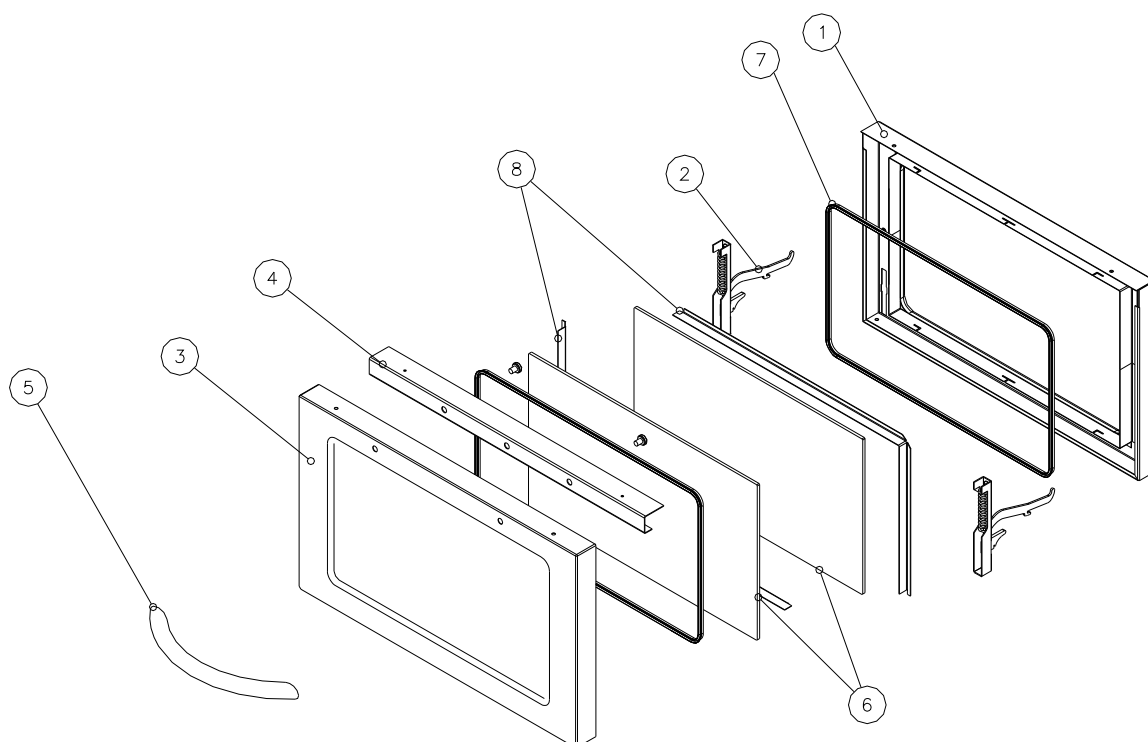
Pos	Part No.	Description
1	026487	CONTROL PANEL
2	021514	POWER SWITCH - 110V
	021473	POWER SWITCH - 240V
3	023857	NEON - 110V
	020849	NEON - 240V
4	023211	THERMOSTAT
6	021472	KNOB -THERMOSTAT
7	011760	1 HOUR TIMER
9	020823	KNOB TIMER
10	021474	LIGHT SWITCH
11	015822	BUZZER - 110V
	011794	BUZZER - 240V
14	026495	OVERLAY - MOFFAT
	026608	OVERLAY - BLUE SEAL

## 11.4.2 CONTROL PANEL ASSEMBLY - E25BMS



Pos	Part No.	Description
1	026487	CONTROL PANEL
2	021514	POWER SWITCH - 110V
3	023857	NEON INDICATOR - 110V
4	023211	THERMOSTAT
6	021472	KNOB -THERMOSTAT
7	011760	1 HOUR TIMER
9	021474	LIGHT SWITCH
10	015822	BUZZER - 120
12	026609	OVERLAY - MOFFAT

## 11.5 DOOR ASSEMBLY - E25MS



Pos	Part No.	Description
1	005037	DOOR INNER WA
2	023217	HINGE
3	026485	DOOR OUTER PANEL WA
4	026578	HANDLE STIFFENER
5	026498	DOOR HANDLE PLATED
6	023063	DOOR INNER GLASS
7	023228	INNER GLASS SEAL
	090201	INNER GLASS SEAL (Per meter)
8	026491	GLASS CLAMP ANGLE