

GAS CONVERSION KITS INDEX

AU, NZ, Models Only

MODEL TYPE	CONVERT TO	CONVERSION KIT
GT45E / GT46E / GT60E	LPG	231962
	NAT	231963
	BUTANE	231964

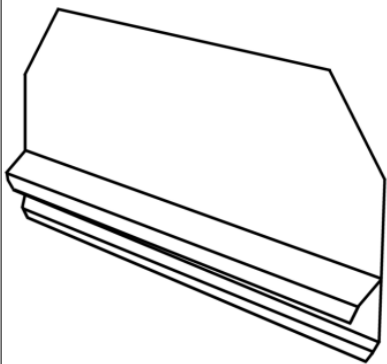
Splashguard

Fryer

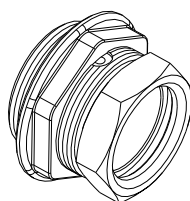
To Cooktop Open Burners
To Target Top
To Cooktop Electric

LH (Part no. 228898)

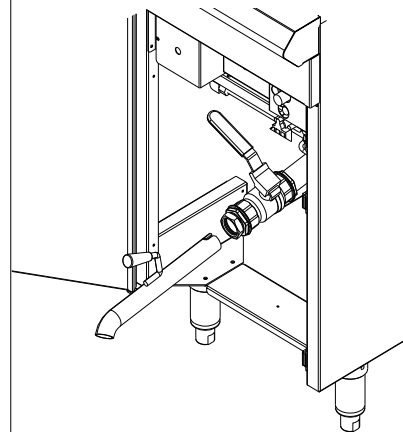
RH (Part no. 228899)



Drain adaptor (Part no. 024705)



Drain extension kit (Part no. 024710)



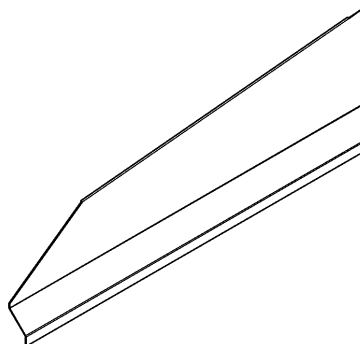
Splashguard

Fryer

To Cooktop Griddle
To Chargrill
To Griddle
To griddle Toaster
To Cooktop Electric-
griddle

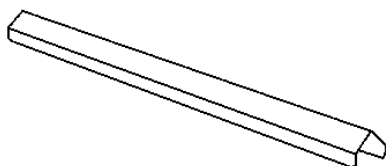
LH (Part no. 228894)

RH (Part no. 228895)



Joining strip

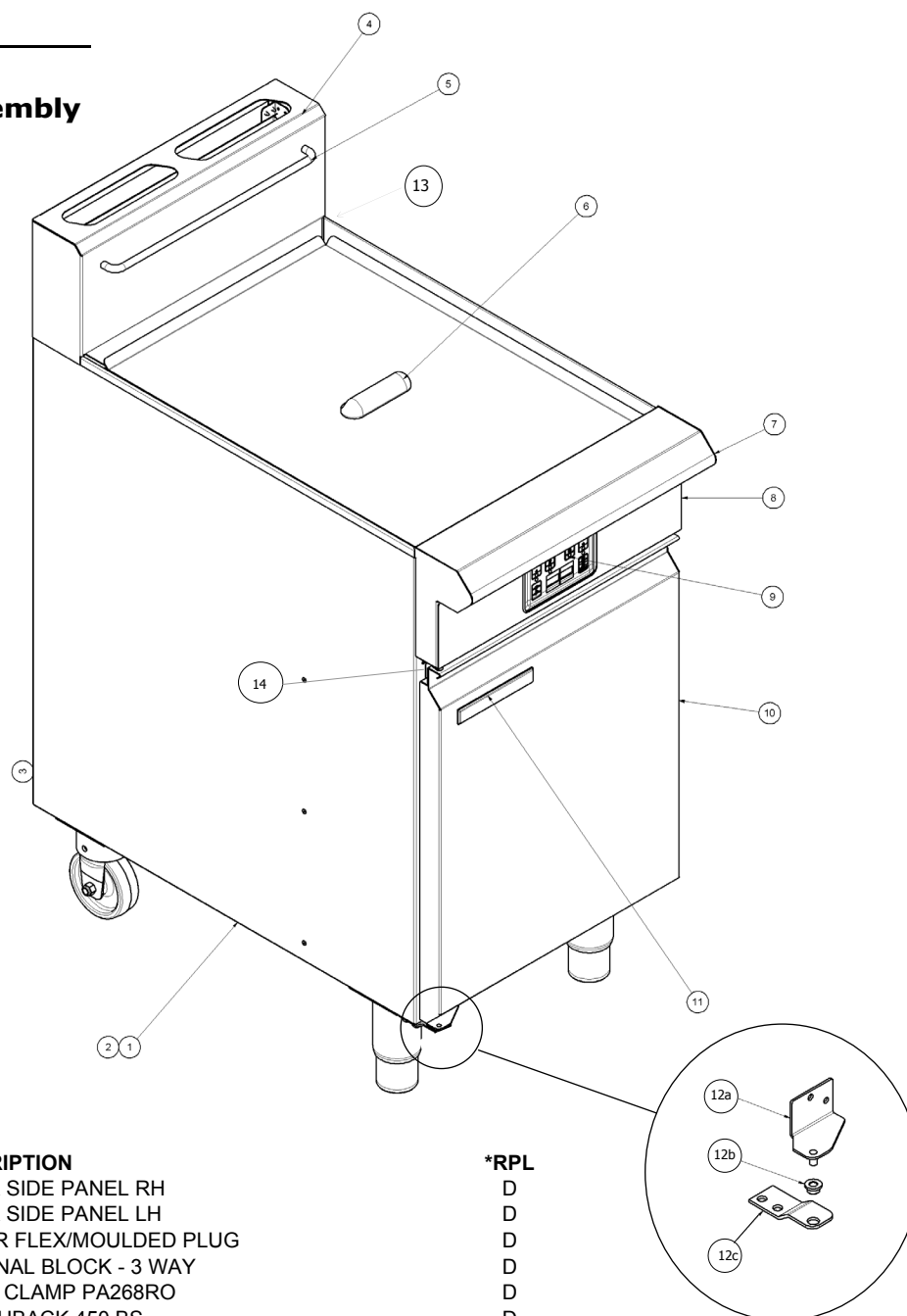
Fryer to Fryer
(Part no. 228600)



8 Exploded Parts Diagrams

8.1 GT45E

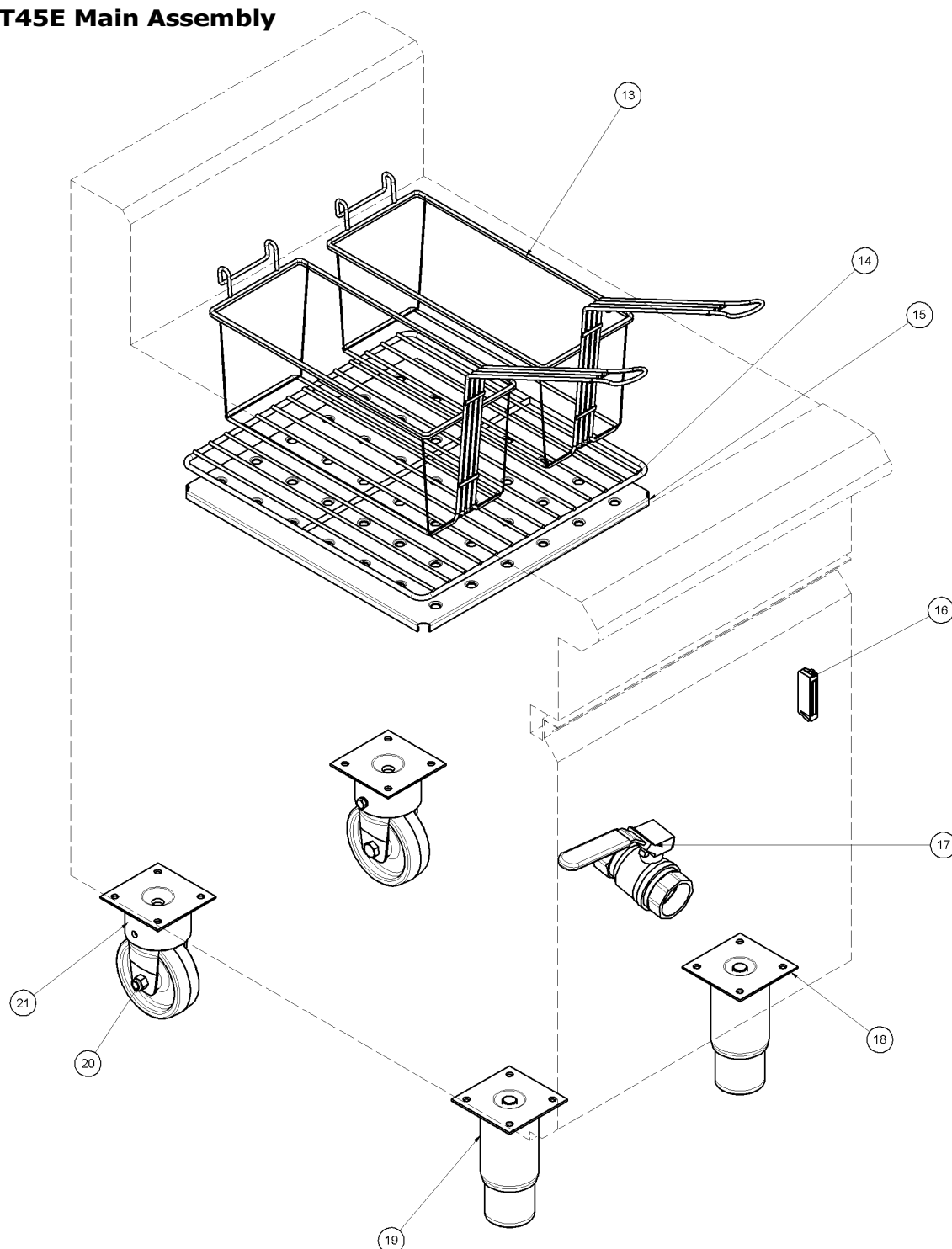
8.1.1 Main Assembly



ITEM	PART NO	DESCRIPTION	*RPL
1	227511	FRYER SIDE PANEL RH	D
2	227512	FRYER SIDE PANEL LH	D
3	002414	POWER FLEX/MOULDED PLUG	D
	025951	TERMINAL BLOCK - 3 WAY	D
	026161	CABLE CLAMP PA268RO	D
4	228770	SPLASHBACK 450 BS	D
5	227441	BASKET HANGER 370mm	D
6	228761	LID 450 FRYER	D
7	227762	HOB FRONT WA BSEAL	D
8	229530	CONTROL PANEL WA E43E GT45E	D
9	228707	FAST DIGITAL CONTROLLER (EXCLUDES OVERLAY)	D
	230101	OVERLAY DIGITAL 3 BASKET BSEAL	D
10	227449	DOOR HANDLE	D
	228846	DOOR OUTER	D
	234889	DOOR ASSEMBLY	D
	227466	FRYER CATCH RECEIVER	D
	228132	TUBE CLIP	D
11	227960	BADGE BLUESEAL	D
12a	228308	HINGE PIVOT WA	C
12b	228301	HINGE BUSH	C
12c	228300	HINGE PLATE	C
13	227216	FRYER TANK	D
14	228414	TOP PIVOT STUD	D
	045411	M5 SPRING WASHER	D
	044015	BSW NUT	D

Recommended Parts Level	
*RPL	Number of units in service
A	1-5
A+B	5-10
A+B+C	10-50
A+B+C+D	50+

8.1.2 GT45E Main Assembly

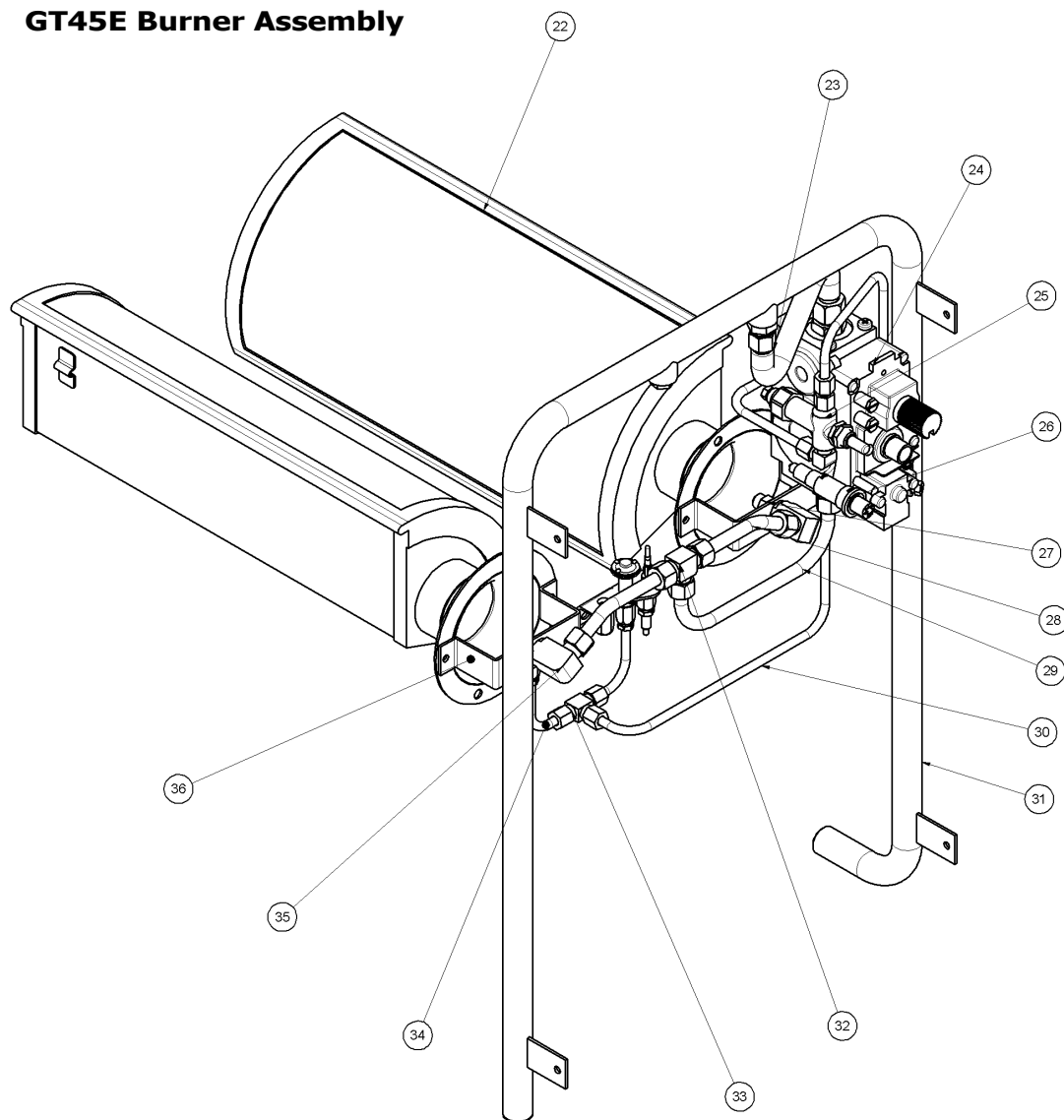


ITEM	PART NO	DESCRIPTION	*RPL
13	018019	FRYER BASKET -STANDARD	D
14	228576	BASKET TRAY 450mm 1 PAN GAS	D
15	228127	FISH PLATE GT45	D
16	227856	MAGNETIC CATCH 02-10-201-10	D
17	018358	BALL VALVE	D
18	227852	LEG PLATE	D
19	227850	LEG 150mm (FLUSH STUD)	D
20	229674	REAR ROLLER ASSY	D
21	229671	LEG RING PLATE THREADED	D

Recommended Parts Level	
*RPL	Number of units in service
A	1-5
A+B	5-10
A+B+C	10-50
A+B+C+D	50+

8 Exploded Parts Diagrams

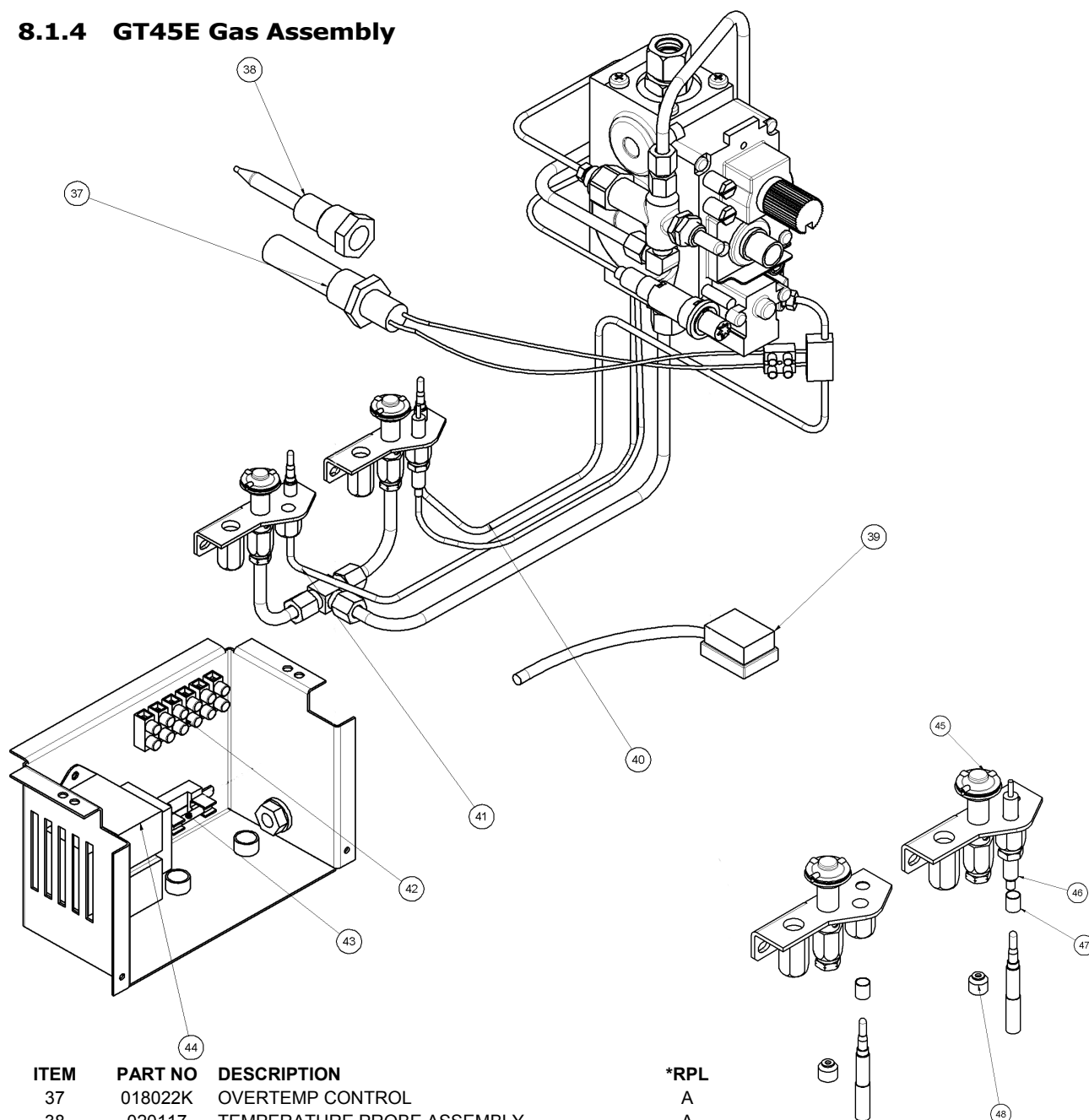
8.1.3 GT45E Burner Assembly



ITEM	PART NO	DESCRIPTION	*RPL
22	022575	BURNER KIT	B
23	022845	TUBE,FLEXIBLE,SS,1/2"O.Dx12"	D
	014408	MALE CONNECTOR ASSY	
24	228617	NOVA GAS CONTROL VALVE 24V	B
25	019237	FLAME FAILURE VALVE M1A/HP	B
	018904	FIXING NUT	D
	227640	FLAME FAILURE TUBE	D
	011742	CONNECTOR VALVE END	D
	013836	ELBOW	D
26	227508	PIEZO IGNITOR M18	A
27	032310	INJECTOR 3.10mm (NAT)	A
	032190	INJECTOR 1.90mm (LPG/PROPANE)	A
	032170	INJECTOR 1.70mm (BUTANE)	A
	032630	INJECTOR 6.3mm (TOWN GAS)	A
28	227636	INJECTOR SUPPLY TUBE	D
29	227638	SUPPLY TUBE	D
30	227639	PILOT SUPPLY TUBE	D
31	227131	MANIFOLD 450 FRYER	D
32	020628	TEE - 3/8" COMPRESSION	D
33	018111	TEE 64x4 TITON FITTING	D
34	227779	PILOT TUBE	D
35	229511	INJECTOR ELBOW x3/8T	D
	015152	NUT	D
	015153	OLIVE	D
36	227694	BURNER INJECTOR MTG BRACKET	D

Recommended Parts Level	
*RPL	Number of units in service
A	1-5
A+B	5-10
A+B+C	10-50
A+B+C+D	50+

8.1.4 GT45E Gas Assembly



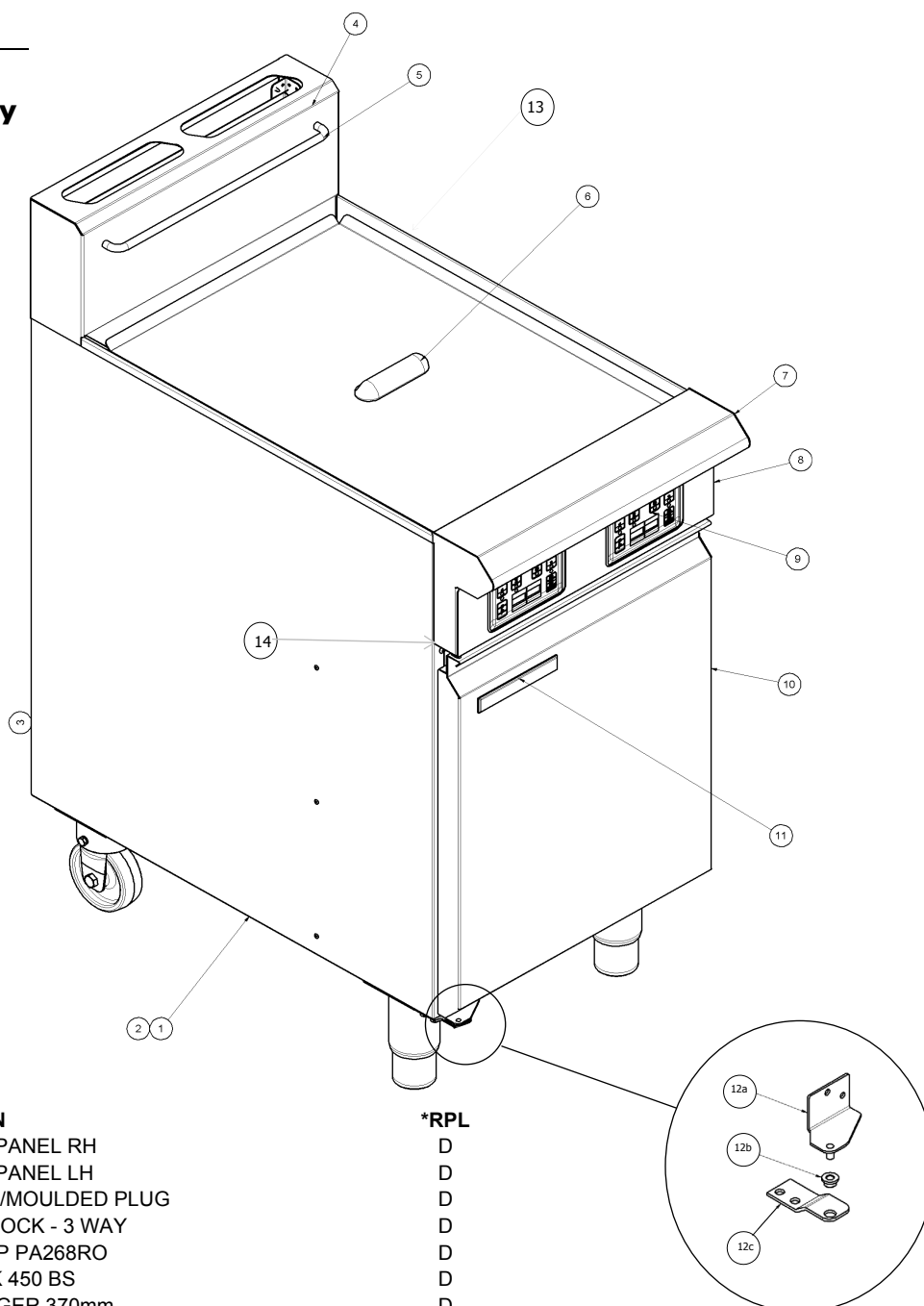
ITEM	PART NO	DESCRIPTION	*RPL
37	018022K	OVERTEMP CONTROL	A
38	020117	TEMPERATURE PROBE ASSEMBLY	A
39	229158	CABLE 24V 340mm	D
40	018094	THERMOCOUPLE INTERRUPTED	A
41	227865	THERMOCOUPLE 850mm M8	A
	018741	NUT	D
42	025948	TERMINAL BLOCK - 6 WAY	D
43	229033	FUSEHOLDER 6.3x32mm	D
	020109	GLASS FUSE 2AMP 250V 1¼ x ¼	C
44	228660	TRANSFORMER WORKED	C
45	018090K	PILOT BURNER KIT	A
	019487	OLIVE	D
	018740	NUT	D
46	018744	ELECTRODE	A
	018095	H.T LEAD 0.5m	A
47	018743	THERMOCOUPLE SPACER	D
48	018091	PILOT INJECTOR - NAT 0.62mm (NAT)	A
	018092	PILOT INJECTOR- LPG 0.35mm (LPG/BUTANE)	A
	018972	PILOT INJECTOR 0.45mm (UK NAT)	A
	018971	PILOT INJECTOR 0.30mm (UK PROPANE)	A
	026393	PILOT INJECTOR 0.75mm (TOWN GAS)	A

Recommended Parts Level	
*RPL	Number of units in service
A	1-5
A+B	5-10
A+B+C	10-50
A+B+C+D	50+

8 Exploded Parts Diagrams

8.2 GT46E

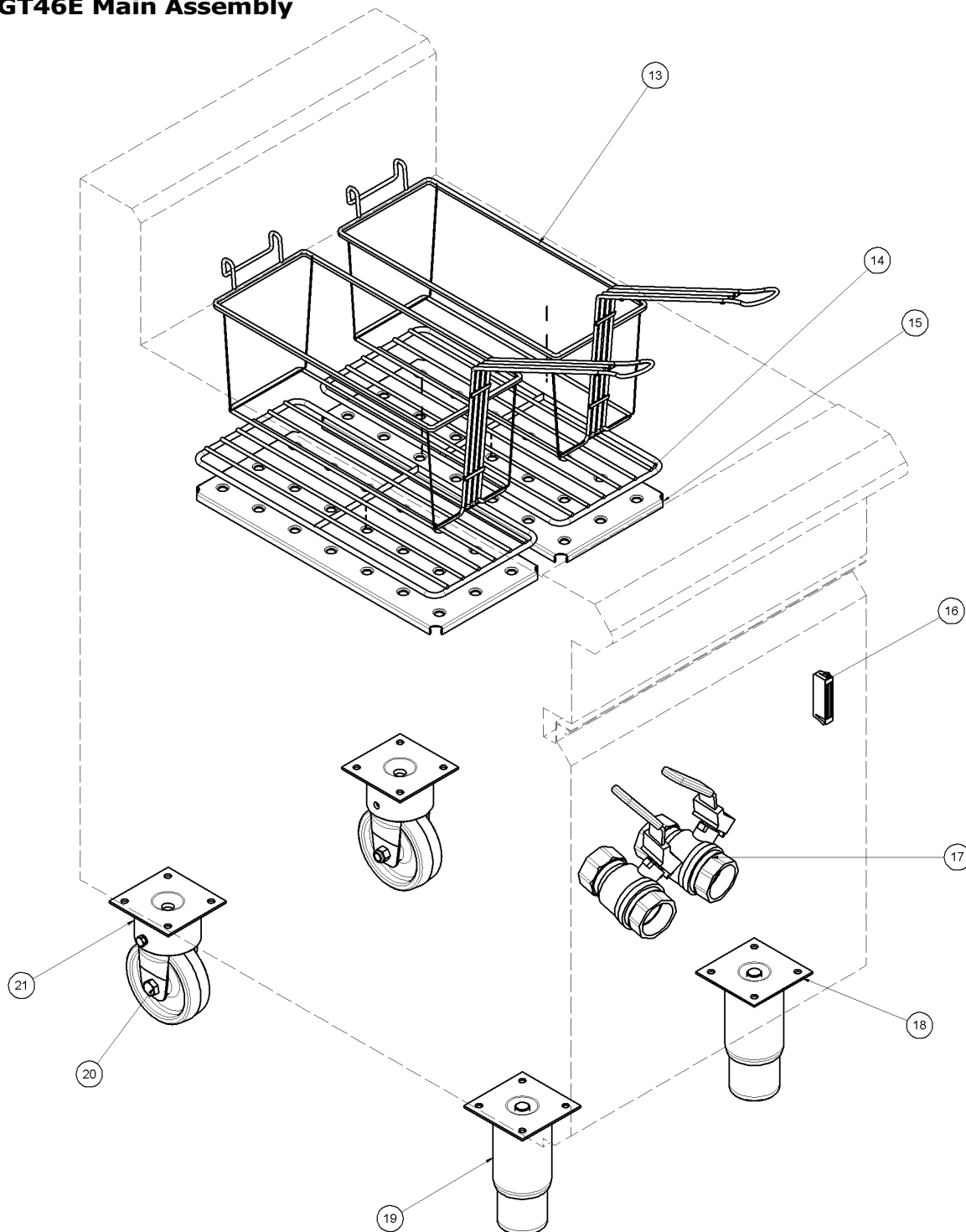
8.2.1 Main Assembly



ITEM	PART NO	DESCRIPTION	*RPL
1	227511	FRYER SIDE PANEL RH	D
2	227512	FRYER SIDE PANEL LH	D
3	002414	POWER FLEX/MOULDED PLUG	D
	025951	TERMINAL BLOCK - 3 WAY	D
	026161	CABLE CLAMP PA268RO	D
4	228770	SPLASHBACK 450 BS	D
5	227441	BASKET HANGER 370mm	D
6	228761	LID 450 FRYER	D
7	227762	HOB FRONT WA BSEAL	D
8	229533	CONTROL PANEL WA E44E GT46E	D
9	228707	FAST DIGITAL CONTROLLER (EXCLUDES OVERLAY)	D
	230101	OVERLAY DIGITAL 3 BASKET BSEAL	D
10	227449	DOOR HANDLE	D
	228846	DOOR OUTER	D
	234889	DOOR ASSEMBLY	D
	227466	FRYER CATCH RECEIVER	D
	228132	TUBE CLIP	D
11	227960	BADGE BLUESEAL	D
12a	228308	HINGE PIVOT WA	C
12b	228301	HINGE BUSH	C
12c	228300	HINGE PLATE	C
13	227221	FRYER TANK	D
14	228414	TOP PIVOT STUD	D
	045411	M5 SPRING WASHER	D
	044015	3/16 BSW NUT	D

Recommended Parts Level	
*RPL	Number of units in service
A	1-5
A+B	5-10
A+B+C	10-50
A+B+C+D	50+

8.2.2 GT46E Main Assembly

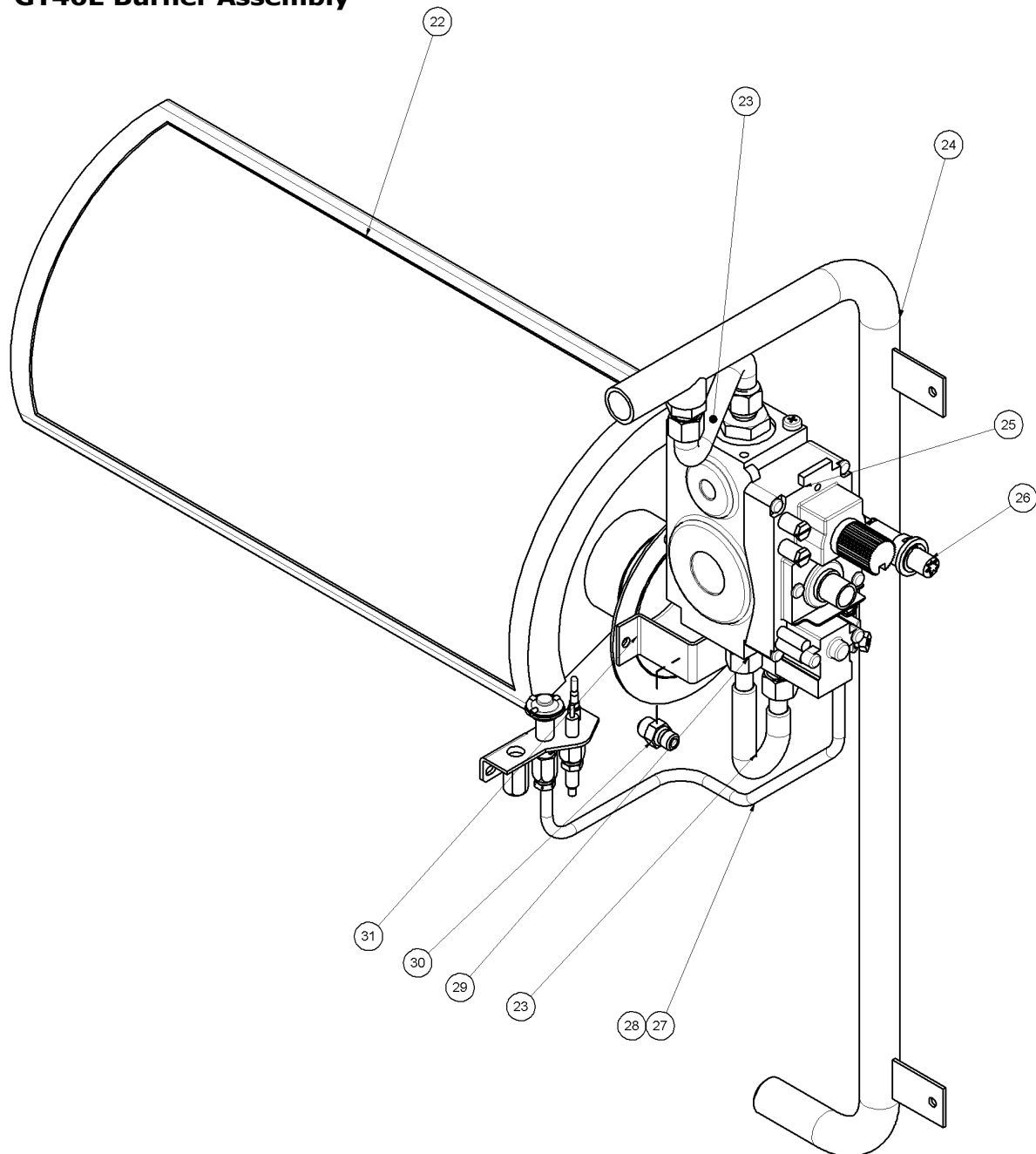


ITEM	PART NO	DESCRIPTION	*RPL
13	018019	FRYER BASKET -STANDARD	D
14	228577	BASKET TRAY 450mm 2 PAN GAS	D
15	228565	FISH PLATE GT46	D
16	227856	MAGNETIC CATCH 02-10-201-10	D
17	018358	BALL VALVE	D
18	227852	LEG PLATE	D
19	227850	LEG 150mm (FLUSH STUD)	D
20	229674	REAR ROLLER ASSY	D
21	229671	LEG RING PLATE THREADED	D

Recommended Parts Level	
*RPL	Number of units in service
A	1-5
A+B	5-10
A+B+C	10-50
A+B+C+D	50+

8 Exploded Parts Diagrams

8.2.3 GT46E Burner Assembly

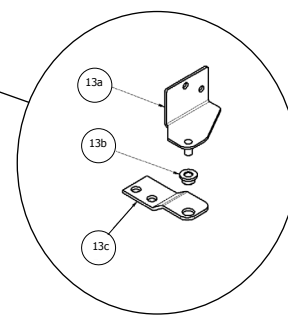


ITEM	PART NO	DESCRIPTION	*RPL
22	022575	BURNER KIT	B
23	022845	TUBE,FLEXIBLE,SS,1/2"O.Dx12"	D
	014408	MALE CONNECTOR ASSY	D
24	227131	MANIFOLD 450 FRYER	D
25	228617	NOVA GAS CONTROL VALVE 24V	B
26	227508	PIEZO IGNITOR M18	A
27	227649	PILOT SUPPLY TUBE RH	D
28	227647	PILOT SUPPLY TUBE LH	D
29	229511	INJECTOR ELBOW x3/8T	D
30	032310	INJECTOR 3.10mm (NAT)	A
	032190	INJECTOR 1.90mm (LPG/PROPANE)	A
	032170	INJECTOR 1.70mm (BUTANE)	A
	032630	INJECTOR 6.3mm (TOWN GAS)	A
31	227694	BURNER INJECTOR MTG BRACKET	D

Recommended Parts Level	
*RPL	Number of units in service
A	1-5
A+B	5-10
A+B+C	10-50
A+B+C+D	50+

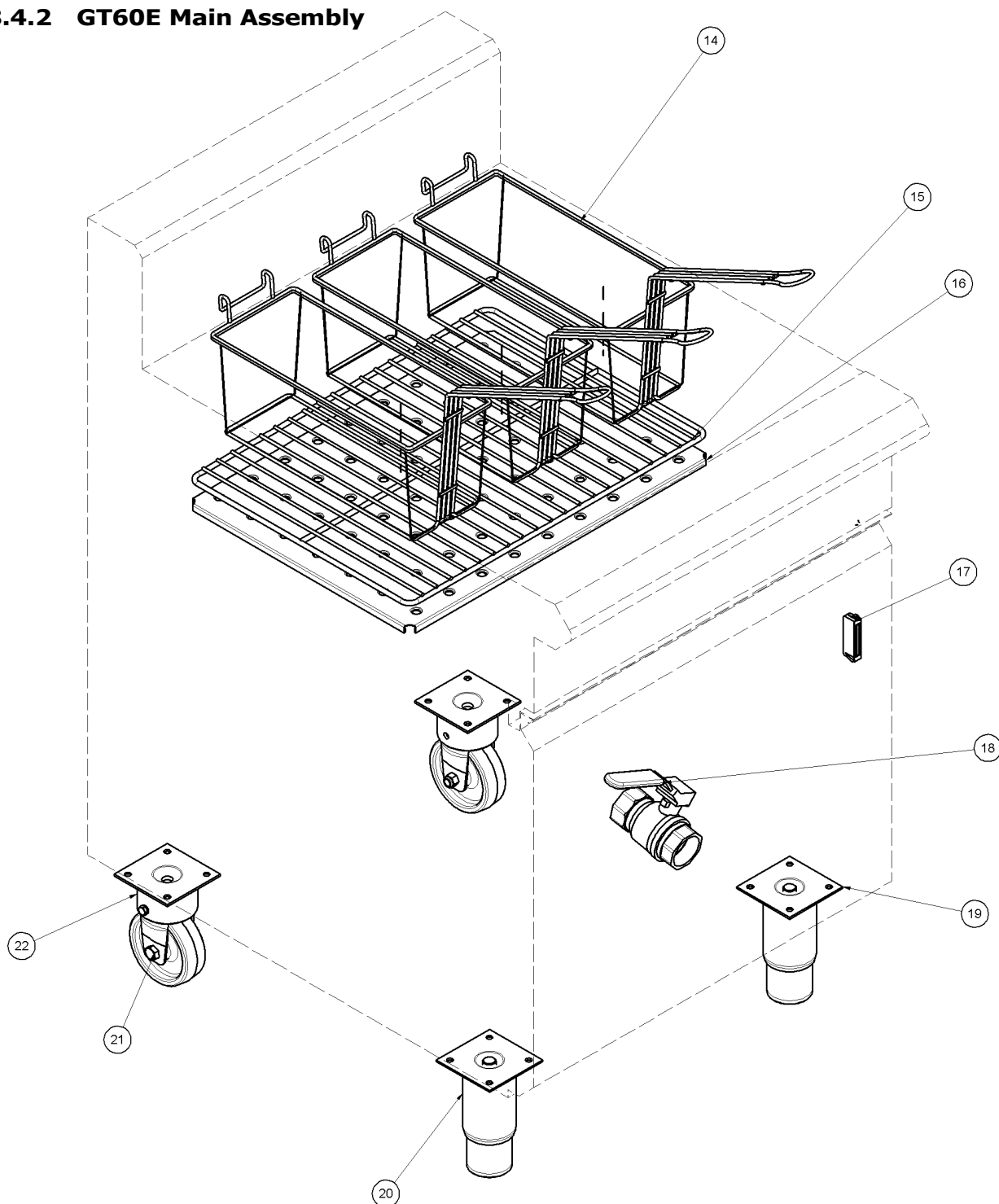
8

8.4.1 Main Assembly

[illegible]

Recommended Parts Level

8.4.2 GT60E Main Assembly

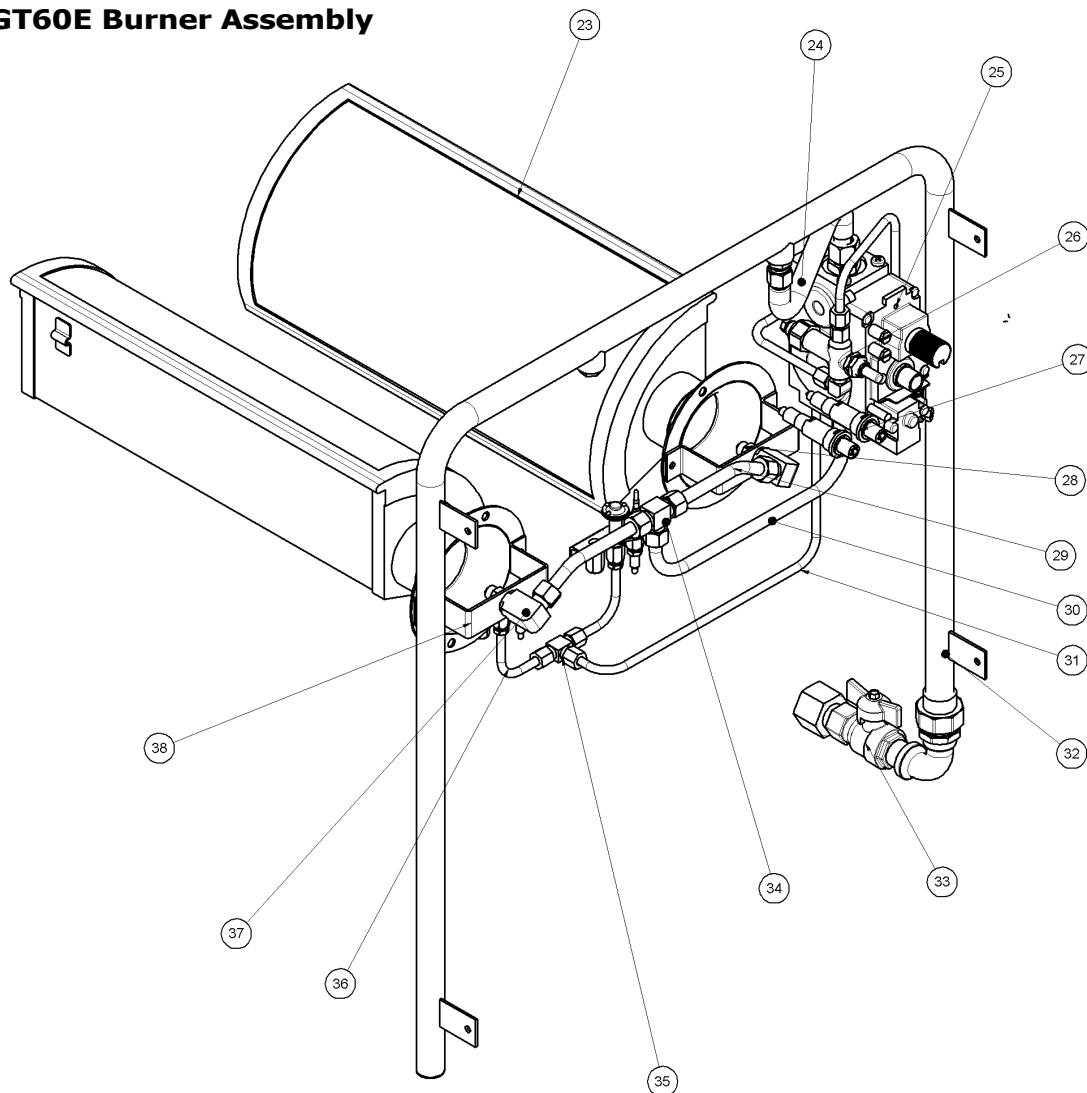


ITEM	PART NO	DESCRIPTION	*RPL
14	018019	FRYER BASKET -STANDARD	D
15	228578	BASKET TRAY 600mm	D
16	228128	FISH PLATE GT60	D
17	227856	MAGNETIC CATCH 02-10-201-10	D
18	018358	BALL VALVE	D
19	227852	LEG PLATE	D
20	227850	LEG 150mm (FLUSH STUD)	D
21	229674	REAR ROLLER ASSY	D
22	229671	LEG RING PLATE THREADED	D

Recommended Parts Level	
*RPL	Number of units in service
A	1-5
A+B	5-10
A+B+C	10-50
A+B+C+D	50+

8 Exploded Parts Diagrams

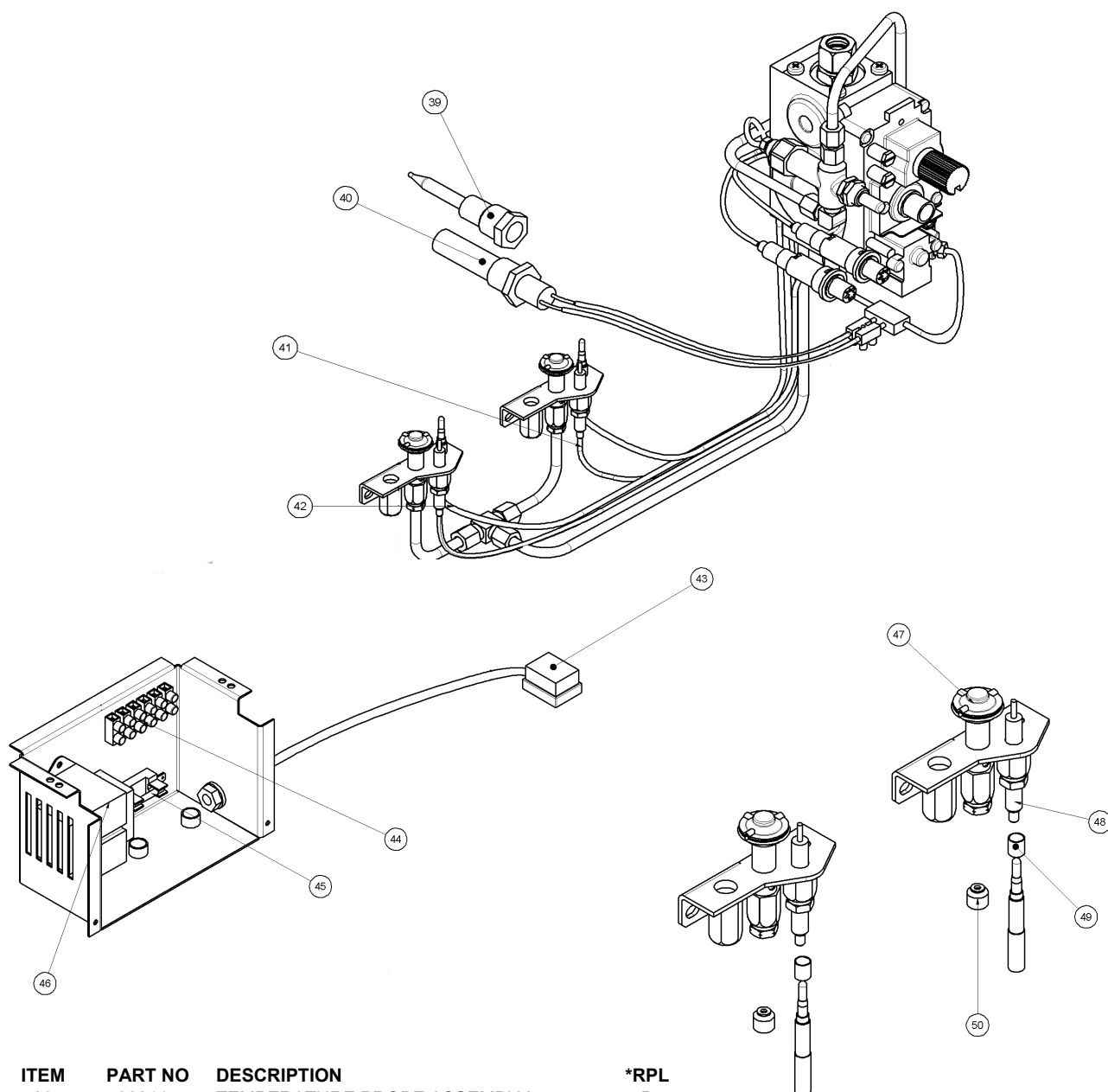
8.4.3 GT60E Burner Assembly



ITEM	PART NO	DESCRIPTION	*RPL
23	022575	BURNER KIT	B
24	022845	TUBE,FLEXIBLE,SS,1/2"O.Dx12"	D
	014408	MALE CONNECTOR ASSY	D
25	228617	NOVA GAS CONTROL VALVE 24V	B
26	019237	FLAME FAILURE VALVE M1A/HP	B
	018904	FIXING NUT	D
	227640	FLAME FAILURE TUBE	D
	011742	CONNECTOR VALVE END	D
	013836	ELBOW	D
27	227508	PIEZO IGNITOR M18	A
28	032310	INJECTOR 3.10mm (NAT)	A
	032190	INJECTOR 1.90mm (LPG/PROPANE)	A
	032170	INJECTOR 1.70mm (BUTANE)	A
	032630	INJECTOR 6.3mm (TOWN GAS)	D
29	227654	INJECTOR SUPPLY TUBE	D
30	227655	SUPPLY TUBE	D
31	227760	PILOT SUPPLY TUBE	D
32	227134	MANIFOLD 600 FRYER	D
33	023816	BALL VALVE 1/2" BSP M/F TEE	D
34	020628	TEE - 3/8" COMPRESSION	D
35	018111	TEE 64x4 TITON FITTING	D
36	227780	PILOT TUBE	D
37	229511	INJECTOR ELBOW x3/8T	D
	015152	NUT	D
	015153	OLIVE	D
38	227694	BURNER INJECTOR MTG BRACKET	D

Recommended Parts Level	
*RPL	Number of units in service
A	1-5
A+B	5-10
A+B+C	10-50
A+B+C+D	50+

8.4.4 GT60E Gas Assembly



ITEM	PART NO	DESCRIPTION	*RPL
39	020117	TEMPERATURE PROBE ASSEMBLY	B
40	018022K	OVERTEMP CONTROL	A
41	018094	THERMOCOUPLE INTERRUPTED	A
42	227865	THERMOCOUPLE 850mm M8	B
	018741	NUT	D
43	229158	CABLE 24V 340mm	D
44	025948	TERMINAL BLOCK - 6 WAY	D
45	229033	FUSEHOLDER 6.3x32mm	D
	020109	GLASS FUSE 2AMP 250V 1¼ x ¼	B
46	228660	TRANSFORMER WORKED	B
47	018090K	PILOT BURNER KIT	A
	019487	OLIVE	D
	018740	NUT	D
48	018744	ELECTRODE	A
	018095	H.T LEAD 0.5m	A
49	018743	THERMOCOUPLE SPACER	D
50	018091	PILOT INJECTOR 0.62mm (NAT)	A
	018092	PILOT INJECTOR 0.35mm (LPG)	A
	018972	PILOT INJECTOR 0.45mm (UK NAT)	A
	018971	PILOT INJECTOR 0.30mm (UK PROPANE)	A
	026393	PILOT INJECTOR 0.75mm (TOWN GAS)	D

Recommended Parts Level	
*RPL	Number of units in service
A	1-5
A+B	5-10
A+B+C	10-50
A+B+C+D	50+