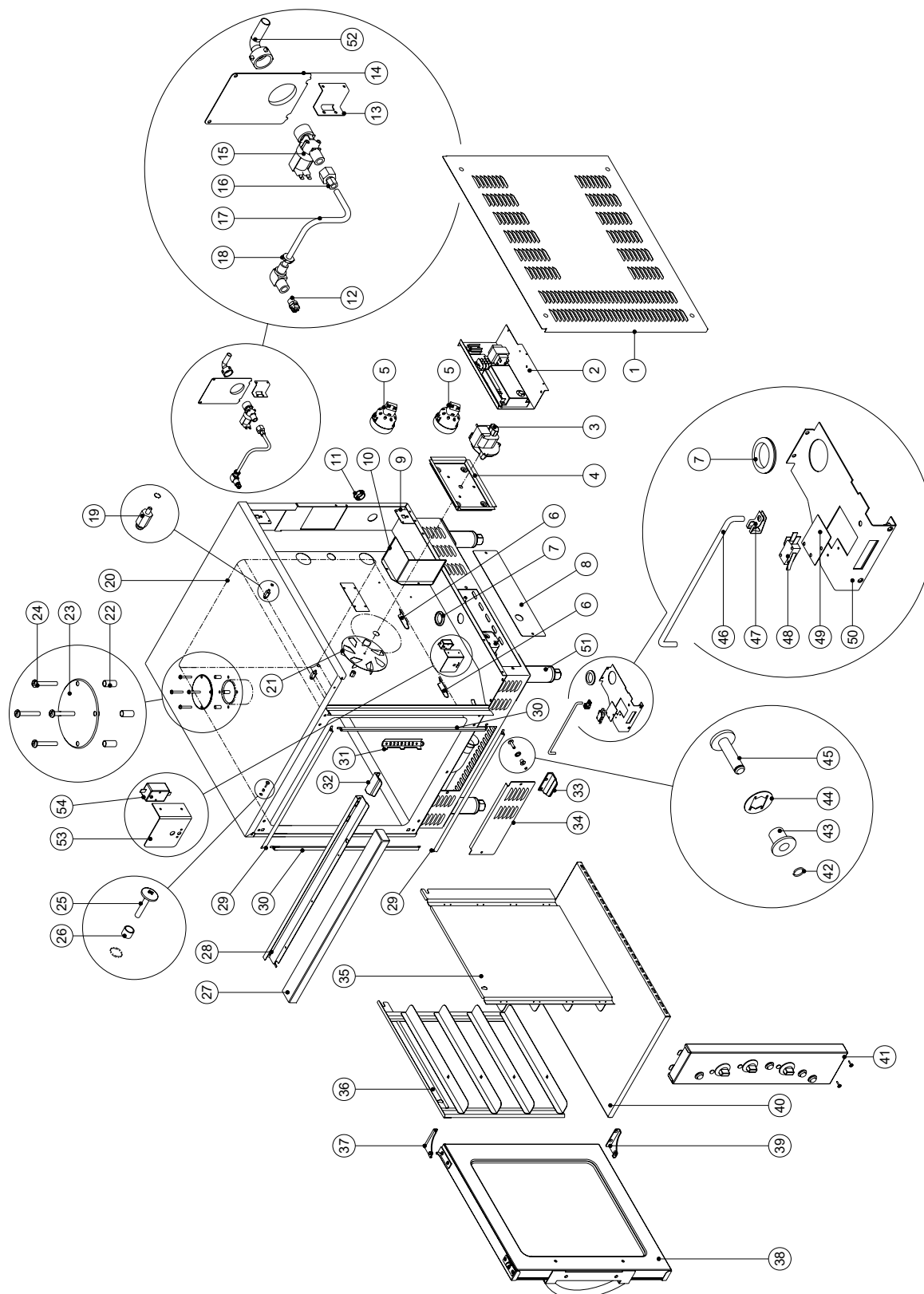


11. PARTS DIAGRAMS

11.1 MAIN ASSEMBLY

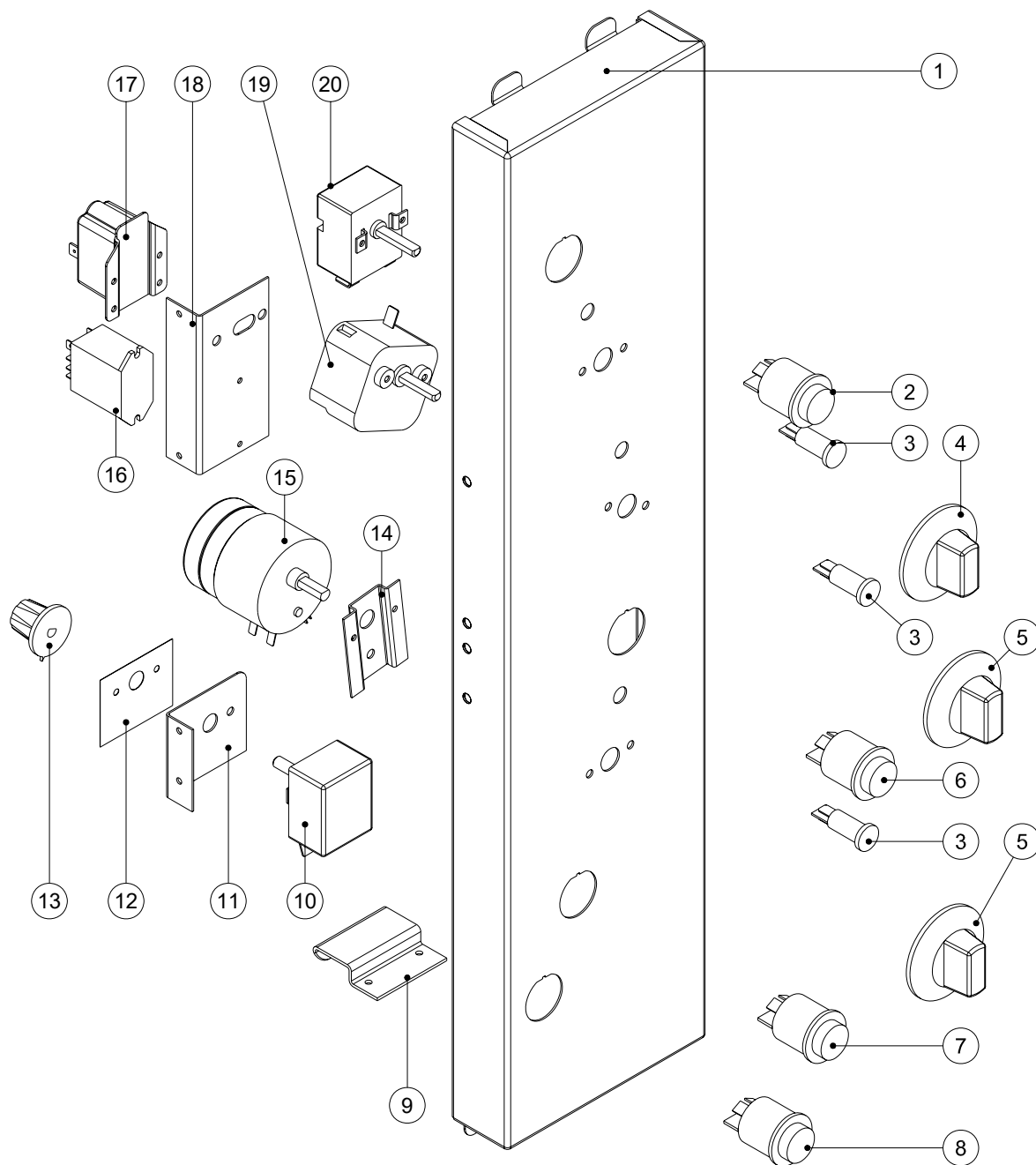


Pos	Part No.	Description
1	024683	SIDE COVER PANEL
2	-----	GEAR PLATE (REFER SECTION 11.4)
3	014672	FAN MOTOR (220-240V) – c/w HEAT INSULATION DISC
	015821	FAN MOTOR (110V) – c/w HEAT INSULATION DISC
4	014694	MOTOR MOUNTING PLATE
5	013520	OVEN LIGHT ASSEMBLY E14 (220-240V)
	013521	BULB 40W E14 (220-240V)
	023216	OVEN LIGHT ASSEMBLY E26 (110V)
	003434	SILK GASKET
	003002	LIGHT GLASS
6	024717	BAFFLE LOCATING BRACKET
7	010761	GROMMET $\varnothing 1\frac{1}{2}$ " RUBBER
8	004950	SIDE GAS SERVICE ACCESS PANEL
9	024689	SIDE COVER MOUNTING BRACKET
10	024852	HEAT DEFLECTOR
11	019239	SNAP BUSH 19mm
12	021057	SPRAY NOZZLE
13	024702	WATER SOLENOID MOUNTING BRACKET
14	021619	REAR SERVICE PANEL
15	020851	WATER SOLENOID (220-240V)
	021617	WATER SOLENOID (110V)
16	020869	CONNECTOR $\frac{3}{8}$ "F x $\frac{1}{4}$ "COMP
17	021058	WATER TUBE / ELBOW ASSEMBLY
18	013215	BACKNUT
19	014031	OVEN BAFFLE STUD
20	004925	OVEN LINER ENAMELLED
21	015598	FAN
22	016245	HOOD SPACER
23	016241	VENT HOOD PLATE
24	041401	SCREW M6 x 35 ST/ST
25	041405	SCREW $\frac{1}{2}$ " x $\frac{3}{16}$ "
26	003397	SPACER
27	004945	LINTEL ENAMELLED (G32M)
	024847	LINTEL ST/ST (G32MS)
28	024672	LINTEL SUPPORT
29	024785	TOP/BOTTOM DOOR SEAL
30	024784	LEFT/RIGHT DOOR SEAL
31	013974	PHIAL GUARD
32	024803	ROLLER STRIKE TOP
33	024804	ROLLER STRIKE BOTTOM
34	004949	INJECTOR ACCESS PANEL ENAMELLED
35	015656	FAN BAFFLE RH
36	015575	SIDE RACK LH
37	020082	TOP HINGE (ASSEMBLED WITH BUSH)
	017905	BUSH
38	-----	DOOR ASSEMBLY (REFER SECTION 11.5)
39	020083	BOTTOM HINGE (ASSEMBLED WITH BUSH)
	017905	BUSH
40	004397	RADIATION BAFFLE ENAMELLED
41	-----	CONTROL PANEL ASSEMBLY (REFER SECTION 11.2)
42	021638	PIN CIRCLIP
43	013610	BUSH
44	044210	SPIRE CLIP
45	021637	MICROSWITCH BUTTON
46	024791	MICROSWITCH ROD
47	017929	DAMPER ROD CLIP
48	024802	MICROSWITCH
49	013977	INSULATOR
50	024584	MICROSWITCH BRACKET

51	018724	LEG 6" (FROM S/N 251942(USA ONLY) 252730 (NON USA)
	018723	LEG PLATE (NOT ILLUSTRATED) (FROM S/N 251942(USA ONLY) 252730 (NON USA)
	015274	LEG ASSEMBLY 6" (UP TO S/N 251941(USA ONLY) 252729 (NON USA)
	015275	LEG TUBE WA – PLATED (UP TO S/N 251941(USA ONLY) 252729(NON USA)
	010990	ADJUSTABLE FOOT
52	021526	WATER INLET ELBOW
	021527	WATER INLET WASHER
53	019380	OVERTEMP BRACKET (UK ONLY)
54	019369K	OVERTEMP THERMOSTAT KIT (UK ONLY) (UP TO S/N 262065)
		(KIT INCLUDES 025400 OVERTEMP)
	025400	OVERTEMP THERMOSTAT (UK ONLY) (FROM S/N 262066)

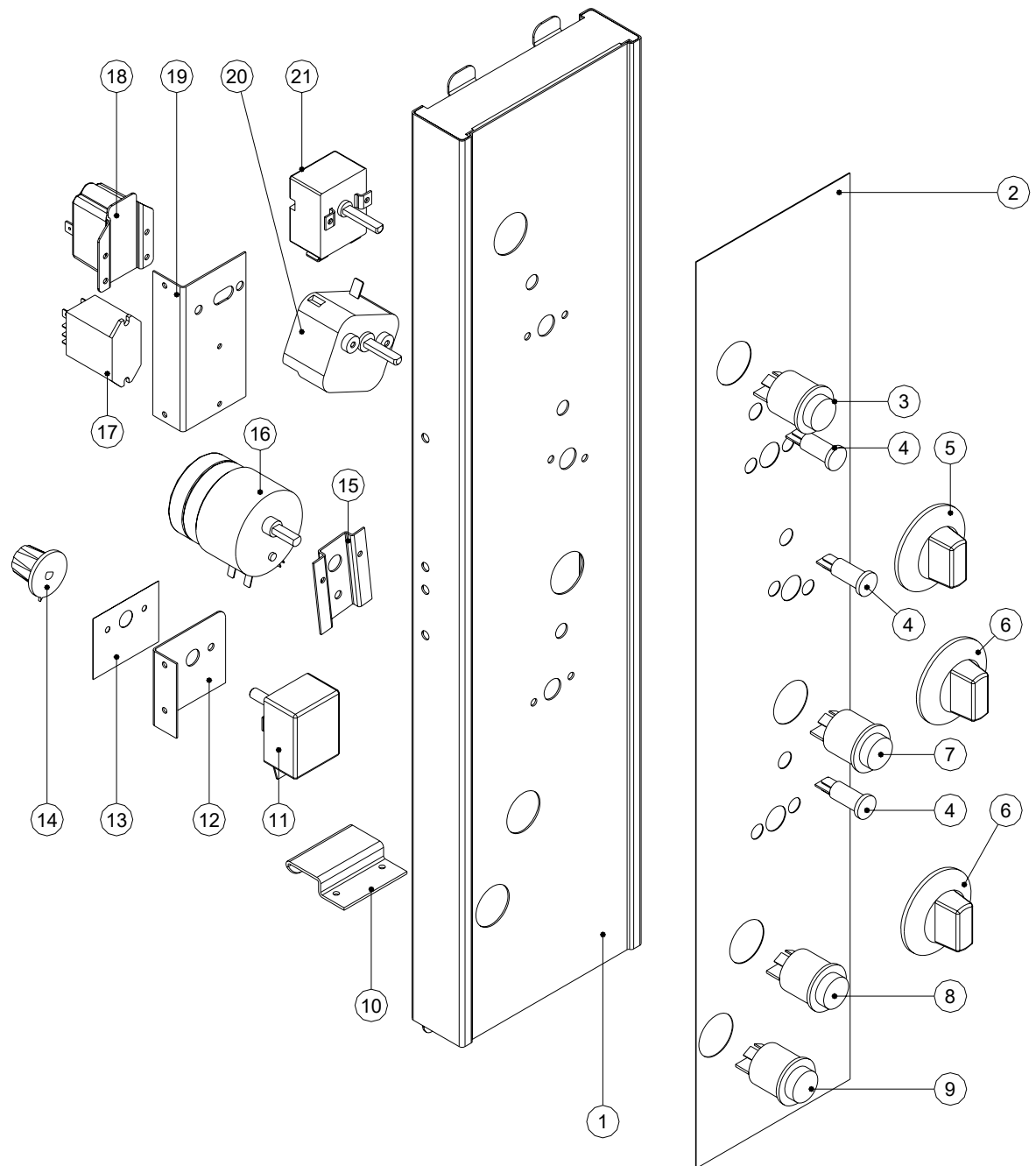
11.2 CONTROL PANEL ASSEMBLY

11.2.1 G32M CONTROL PANEL ASSEMBLY



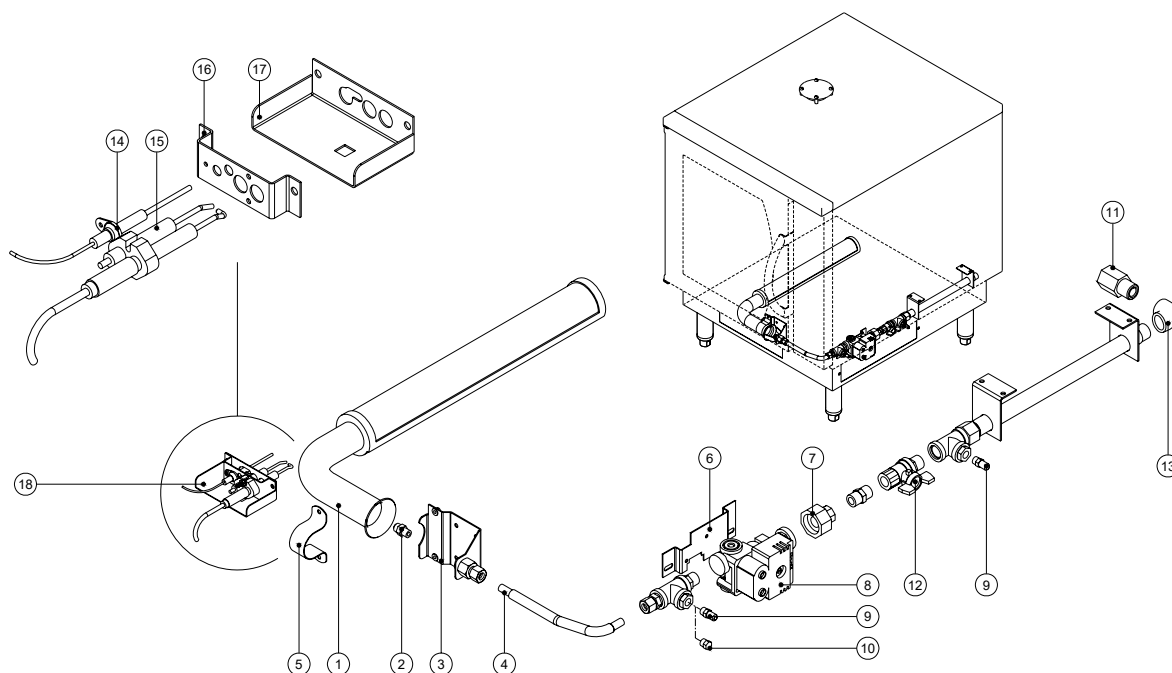
Pos	Part No.	Description
1	004955	CONTROL PANEL BAKBAR °C
	004956	CONTROL PANEL BLUE SEAL °C
2	021473	POWER SWITCH (240V)
	021514	POWER SWITCH (110V)
3	020849	INDICATOR LIGHT (240V)
	023857	INDICATOR LIGHT (110V)
4	021472	THERMOSTAT KNOB
5	020823	TIMER KNOB
6	021476	ROAST N HOLD SWITCH (240V)
	021515	ROAST N HOLD SWITCH (110V)
7	021474	STEAM SWITCH
8	024773	LIGHT SWITCH
9	024694	CONTROL PANEL HOOK
10	018223	HOLD THERMOSTAT
11	021538	HOLD STAT BRACKET
12	018209	HOLD STAT LABEL
13	018224	HOLD STAT KNOB
14	021442	TIMER MOUNTING PANEL
15	011419	3 HOUR TIMER (240V 50Hz)
	011983	3 HOUR TIMER (240V 60Hz)
	015823	3 HOUR TIMER (110V 60Hz)
16	021534	RELAY (240V)
	021535	RELAY (110V)
17	011794	BUZZER (240V)
	015822	BUZZER (110V)
18	024703	BUZZER/RELAY BRACKET
19	011760	60 MINUTE TIMER
20	024774	THERMOSTAT

11.2.2 G32MS CONTROL PANEL ASSEMBLY



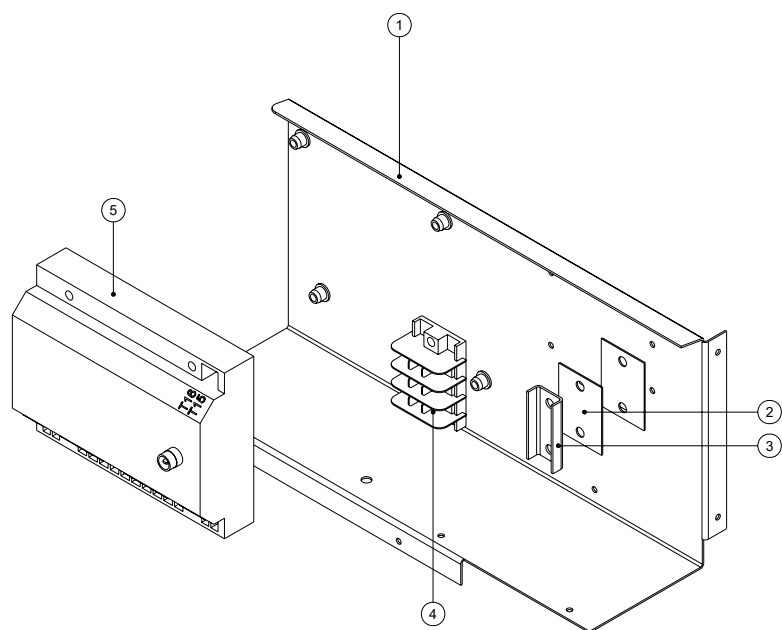
Pos	Part No.	Description
1	024805	CONTROL PANEL ST/ST
2	024778	OVERLAY BAKBAR °C
	024779	OVERLAY BLUE SEAL °C
	024777	OVERLAY MOFFAT °F
3	021473	POWER SWITCH (240V)
	021514	POWER SWITCH (110V)
4	020849	INDICATOR LIGHT (240V)
	023857	INDICATOR LIGHT (110V)
5	021472	THERMOSTAT KNOB
6	020823	TIMER KNOB
7	021476	ROAST N HOLD SWITCH (240V)
	021515	ROAST N HOLD SWITCH (110V)
8	021474	STEAM SWITCH
9	024773	LIGHT SWITCH
10	024694	CONTROL PANEL HOOK
11	018223	HOLD THERMOSTAT
12	021538	HOLD STAT BRACKET
13	018209	HOLD STAT LABEL
14	018224	HOLD STAT KNOB
15	021442	TIMER MOUNTING PANEL
16	011419	3 HOUR TIMER (240V 50Hz)
	011983	3 HOUR TIMER (240V 60Hz)
	015823	3 HOUR TIMER (110V 60Hz)
17	021534	RELAY (240V)
	021535	RELAY (110V)
18	011794	BUZZER (240V)
	015822	BUZZER (110V)
19	024703	BUZZER/RELAY BRACKET
20	011760	60 MINUTE TIMER
21	024774	THERMOSTAT 50-320°C

11.3 GAS ASSEMBLY

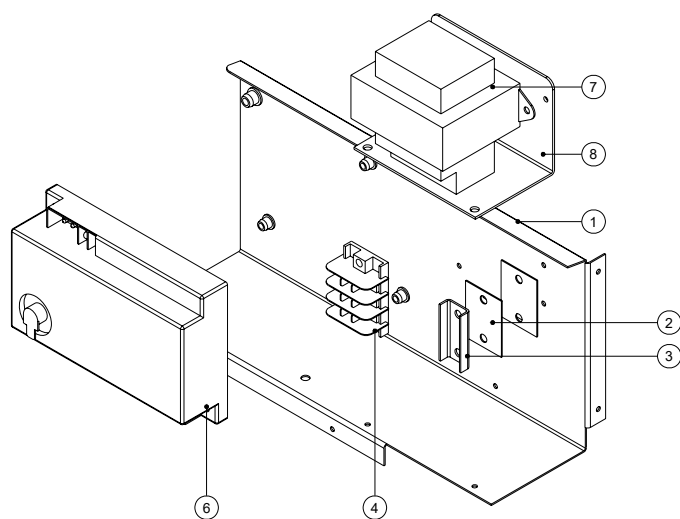


Pos	Part No.	Description
1	004952	BURNER
2	032280	INJECTOR 2.80mm (NAT) (FROM S/N 269436)
	032180	INJECTOR 1.80mm (LPG) (FROM S/N 269436)
	032270	INJECTOR 2.70mm (NAT) (TO S/N 269435)
	032170	INJECTOR 1.70mm (LPG) (TO S/N 269435)
	032260	INJECTOR 2.60mm (UK NAT ONLY)
	032155	INJECTOR 1.55mm (UK PROPANE ONLY)
3	SA1595	INJECTOR MOUNTING BRACKET ASSEMBLY
4	024156	FLEXTUBE 12" x $\frac{3}{8}$ " OD
5	024787	SADDLE 40mm
6	024765	GAS SOLENOID BRACKET
7	015313	MACK UNION
8	019370	GAS SOLENOID (240V)
	015626	GAS SOLENOID (110V UNITS ONLY)
9	019371	PRESSURE TEST POINT
10	015311	PLUG (110V USA/CANADA ONLY)
11	015314	ADAPTOR $\frac{1}{2}$ "NPT x $\frac{1}{2}$ "BSP (110V USA/CANADA ONLY)
12	025076	BALL VALVE $\frac{3}{8}$ " BSP (NON USA/CANADA)
	015310	BALL VALVE $\frac{3}{8}$ " BSP (USA/CANADA ONLY)
13	015176	ELBOW $\frac{1}{2}$ " BSP
14	025071	FLAME SENSOR WORKED (FROM S/N 246144)
	022902	FLAME SENSOR ELECTRODE (TO S/N 246143)
15	024127	SPARK ELECTRODES
16	025072	ELECTRODE MTG BRACKET (FROM S/N 246144)
	024106	ELECTRODE MOUNTING BRACKET (TO S/N 246143)
17	024105	IGNITION ELECTRODE BRACKET
18	022909	IGNITION ELECTRODE COMPLETE ASSEMBLY

11.4 GEAR PLATE ASSEMBLY



GEAR TRAY 240V

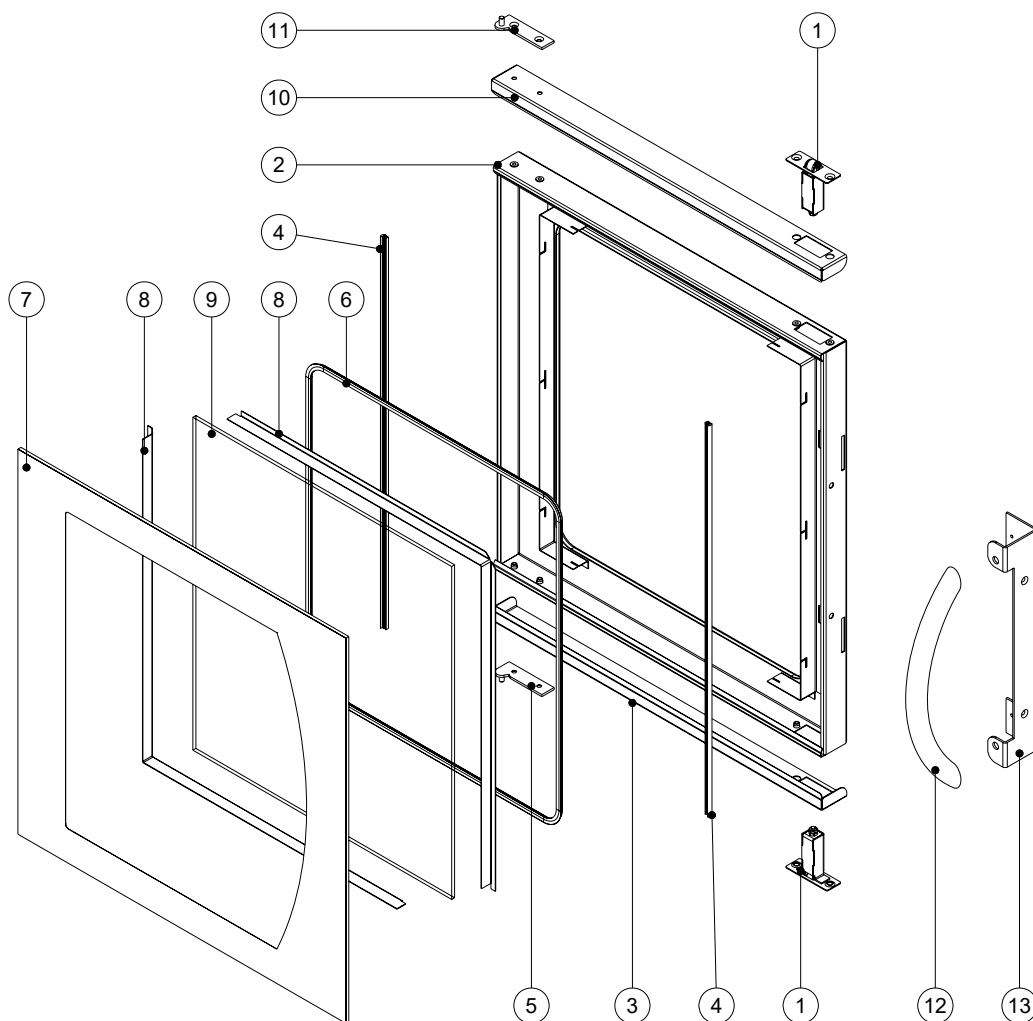


GEAR TRAY 110V

Pos	Part No.	Description
1	024853	GEAR TRAY
2	002441	INSULATOR
3	002138	CABLE CLAMP
4	013586	MAIN TERMINAL BLOCK
5	023025K	IGNITION BOX SIT (240V UNITS ONLY)
6	023024	IGNITION BOX FENWAL (110V UNITS ONLY)
7	024851	TRANSFORMER (110V UNITS ONLY)(FROM S/N 242773)
	023373	TRANSFORMER (110V UNITS ONLY)(TO S/N 242772)
8	024800	TRANSFORMER BRACKET (110V UNITS ONLY)(TO S/N 242772)

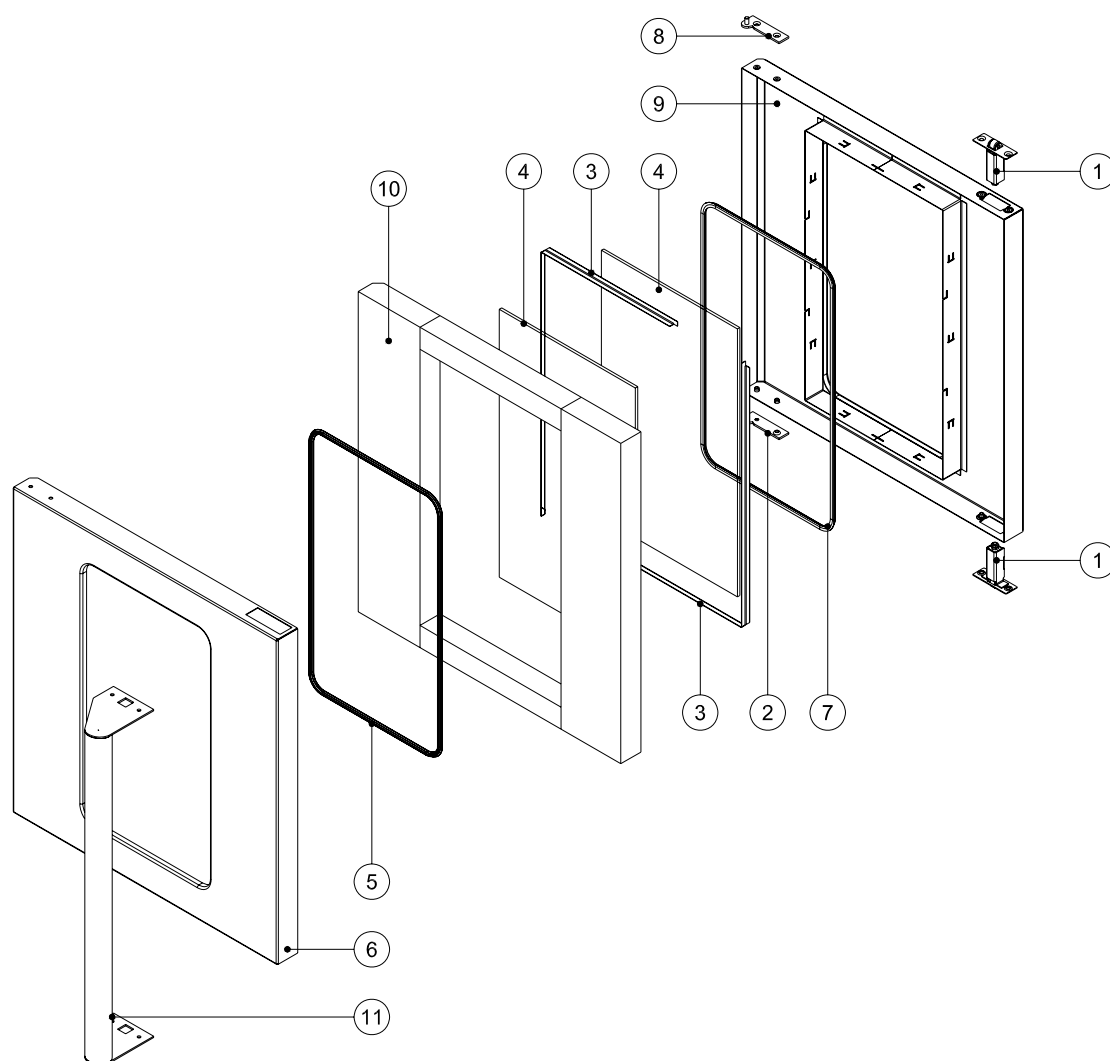
11.5 DOOR ASSEMBLY

11.5.1 G32M GLASS DOOR ASSEMBLY



Pos	Part No.	Description
1	024809	ROLLER CATCH ASSEMBLY
2	004928	DOOR INNER ENAMELLED
3	024602	DOOR TRIM BOTTOM
4	090225	GLASS SEAL EXTRUSION (1.14m)
5	020083	BOTTOM HINGE ASSEMBLY
6	090200	GLASS SEAL EXTRUSION (1.74m)
7	024844	DOOR OUTER GLASS
8	004452	GLASS CLAMP ANGLE PAINTED
9	002340	DOOR INNER GLASS
10	024601	DOOR TRIM TOP
11	020082	TOP HINGE ASSEMBLY
12	021468	DOOR HANDLE
13	024599	DOOR HANDLE BRACKET
	SA1586	DOOR COMPLETE (EXCLUDING HANDLE & BRACKET)

11.5.2 G32MS STAINLESS STEEL DOOR ASSEMBLY



Pos	Part No.	Description
1	024809	ROLLER CATCH ASSEMBLY
2	020083	BOTTOM HINGE ASSEMBLY
3	024605	GLASS CLAMP ANGLE
4	023063	DOOR WINDOW GLASS
5	090201	GLASS SEAL EXTRUSION (1.44m)
6	024845	DOOR OUTER PANEL
7	090200	GLASS SEAL EXTRUSION (1.44m)
8	020082	TOP HINGE ASSEMBLY
9	004957	DOOR INNER (ENAMELLED)
10	-----	INSULATION
11	024713	DOOR HANDLE
	SA1587	ST/ST DOOR COMPLETE