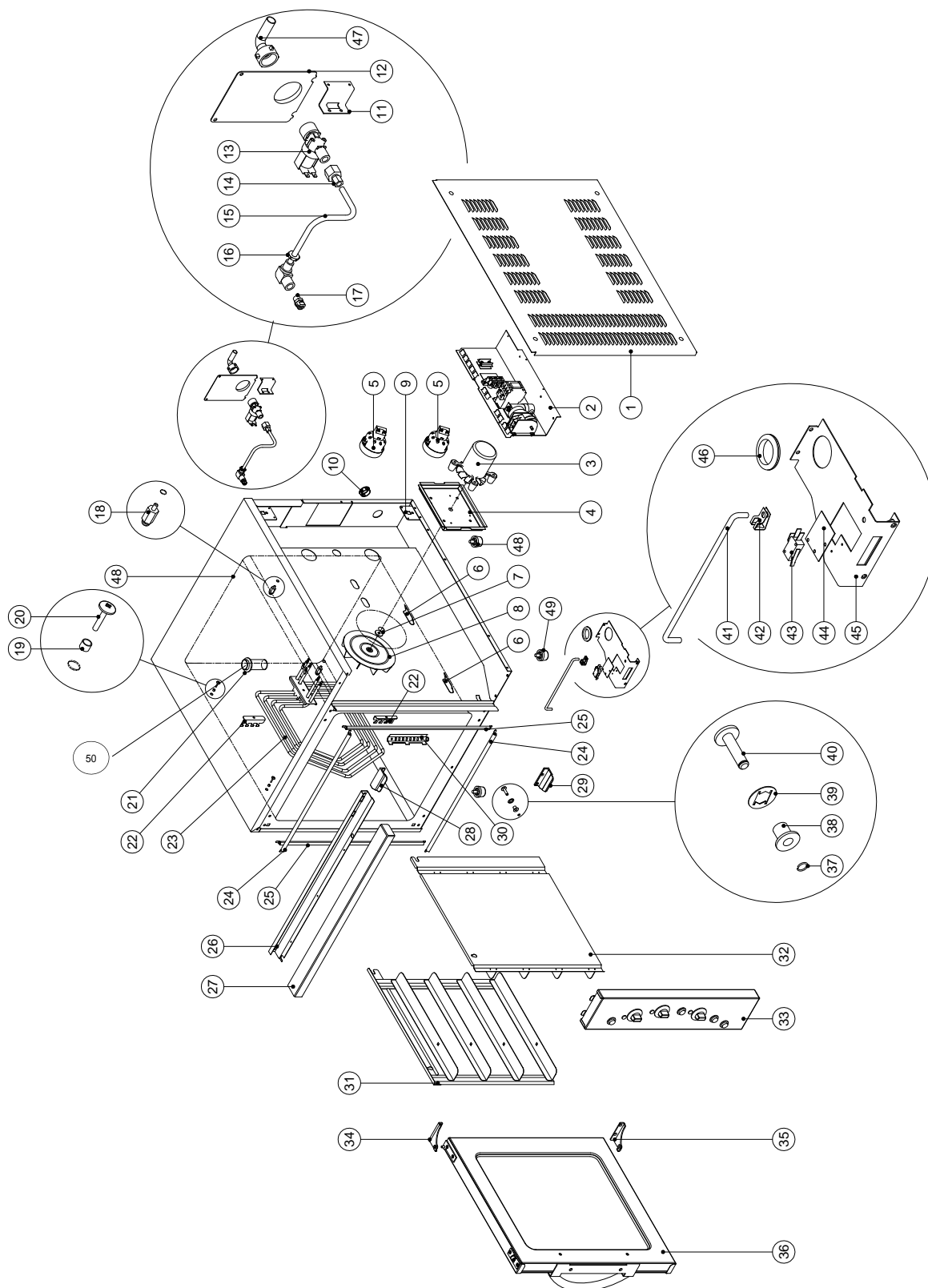


11. PARTS DIAGRAMS

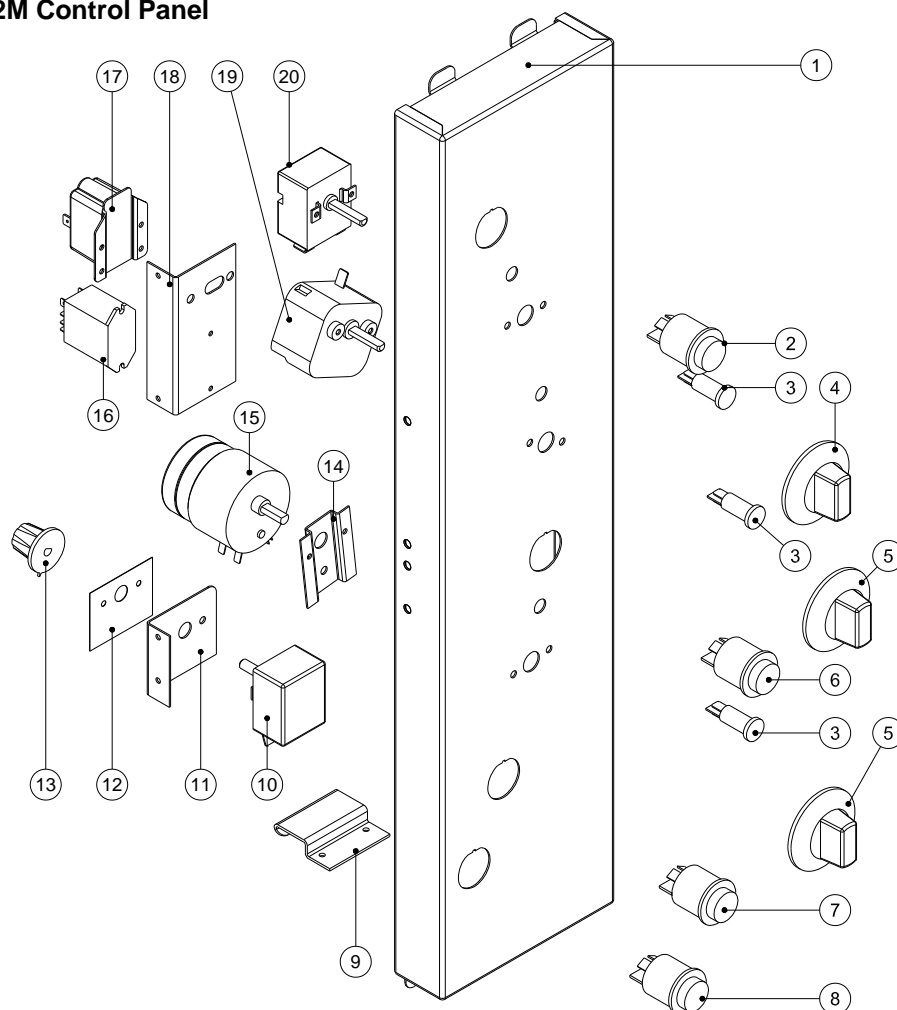
11.1 MAIN ASSEMBLY



Pos	Part No.	Description
1	024683	SIDE COVER RH
2	-----	GEAR TRAY (REFER SECTION 11.3)
3	024431	FAN MOTOR
4	024604	MOTOR MOUNTING PLATE
5	013520	OVEN LIGHT ASSEMBLY
	003434	SILK GASKET
	013521	LAMP - 40W
	003002	LIGHT GLASS
6	024717	BAFFLE LOCATING PLATE
7	024478	FAN SHAFT SEAL
8	024433	FAN
9	024689	SIDE PANEL MOUNTING BRACKET
10	019213	SNAP BUSH 32mm
11	024702	WATER SOLENOID MOUNTING BRACKET
12	021619	REAR SERVICE PANEL
13	020851	WATER SOLENOID
14	020869	CONNECTOR $\frac{3}{8}$ "F x $\frac{1}{4}$ "COMP
15	021058	WATER TUBE / ELBOW ASSEMBLY
16	013215	BACKNUT
17	021057	SPRAY NOZZLE
18	014031	OVEN BAFFLE STUD
19	003397	SPACER
20	041405	SCREW $\frac{1}{2}$ " x $\frac{3}{16}$ "
21	024760	VENT TUBE
50	010761	GROMMET $1\frac{1}{2}$ " RUBBER
22	015581	ELEMENT BRACKET
23	015360	ELEMENT ASSEMBLY (208-220V)
	015363	ELEMENT ASSEMBLY (220-240V)
24	024785	TOP/BOTTOM DOOR SEAL
25	024784	LEFT/RIGHT DOOR SEAL
26	024672	LINTEL SUPPORT
27	004945	LINTEL ENAMELLED (E32M)
	024847	LINTEL S/S (E32MS)
28	024803	ROLLER STRIKE TOP
29	024804	ROLLER STRIKE BOTTOM
30	013974	PHIAL GUARD
31	015575	SIDE RACK LH
32	015656	FAN BAFFLE
	015168	OVEN RACK (NOT ILLUSTRATED)
33	-----	CONTROL PANEL (REFER SECTION 11.2)
34	020082	TOP HINGE (ASSEMBLED WITH BUSH)
	017905	BUSH
35	020083	BOTTOM HINGE (ASSEMBLED WITH BUSH)
	017905	BUSH
36	-----	DOOR ASSEMBLY (REFER SECTION 11.4)
37	021638	PIN CIRCLIP
38	013610	BUSH
39	044210	SPIRE CLIP
40	021637	MICROSWITCH BUTTON
41	024791	MICROSWITCH ROD
42	017929	DAMPER ROD CLIP
43	024802	MICROSWITCH
44	013977	INSULATOR
45	024584	MICROSWITCH BRACKET
46	010761	GROMMET $\phi 1\frac{1}{2}$ " RUBBER
47	021526	WATER INLET ELBOW
	021527	WATER INLET WASHER
48	004924	OVEN LINER
49	013908	FOOT ASSEMBLY $\frac{3}{8}$ "
	013048	4" HI TEMP PLASTIC LEG (OPTIONAL) – NOT ILLUSTRATED

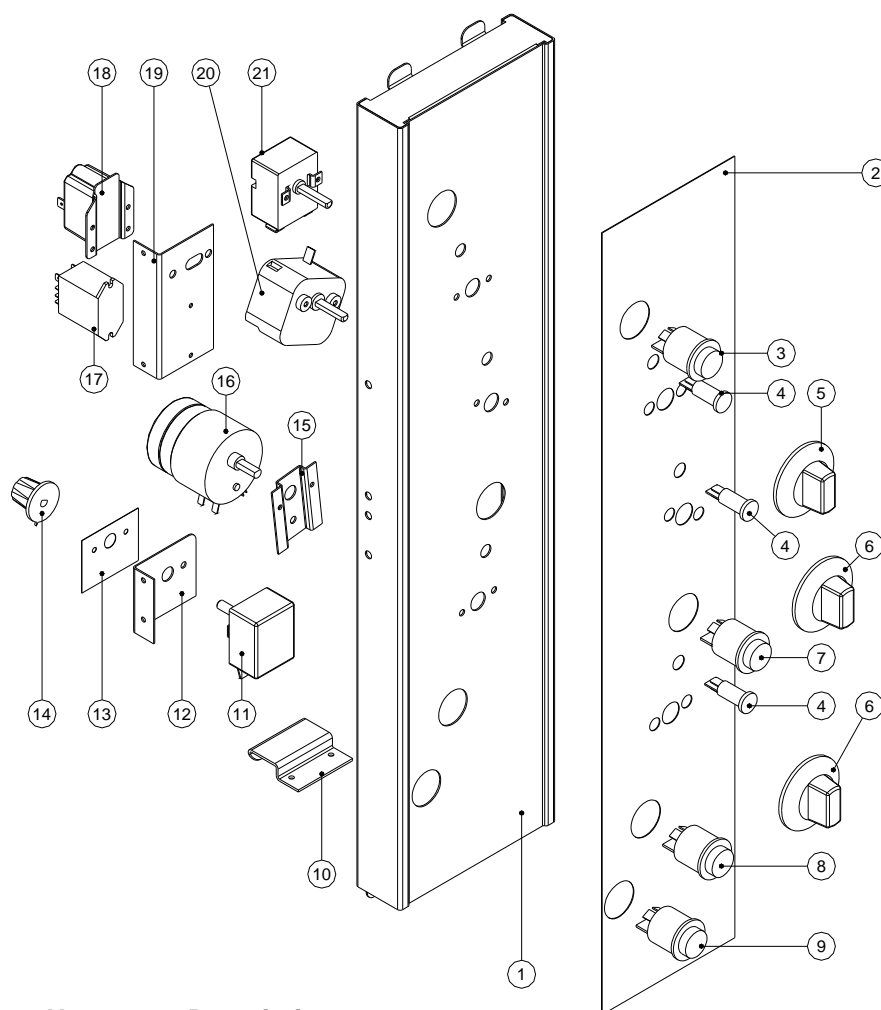
11.2 CONTROL PANEL ASSEMBLY

11.2.1 E32M Control Panel



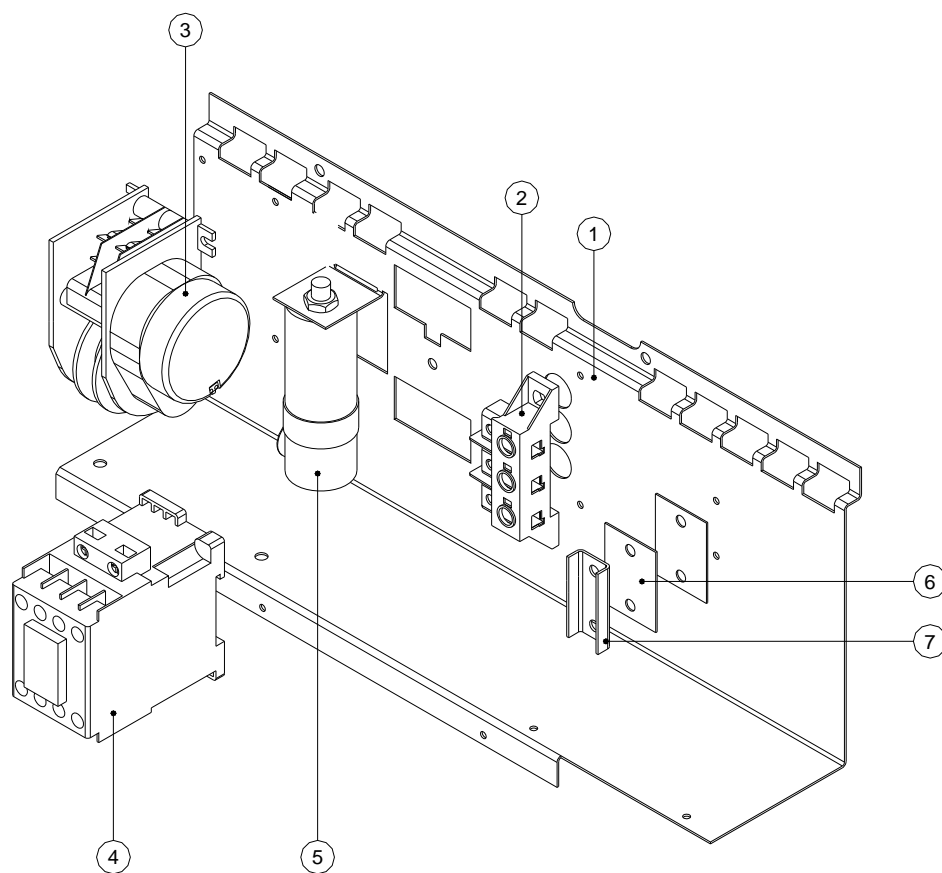
Pos	Part No.	Description
1	004953	CONTROL PANEL BAKBAR °C
	004954	CONTROL PANEL BLUE SEAL °C
2	021473	POWER SWITCH
3	020849	INDICATOR LIGHT
4	021472	THERMOSTAT KNOB
5	020823	TIMER KNOB
6	021476	ROAST N HOLD SWITCH
7	021474	STEAM SWITCH
8	024773	LIGHT SWITCH
9	024694	CONTROL PANEL HOOK
10	018223	HOLD THERMOSTAT
11	021538	HOLD STAT BRACKET
12	018209	HOLD STAT LABEL
13	018224	HOLD STAT KNOB
14	021442	TIMER MOUNTING PANEL
15	011419	3 HOUR TIMER (50Hz)
	011983	3 HOUR TIMER (60Hz)
16	021534	RELAY
17	011794	BUZZER
18	024703	BUZZER/RELAY BRACKET
19	011760	60 MINUTE TIMER
20	024774	THERMOSTAT

11.2.2 E32MS Control Panel



Pos	Part No.	Description
1	024805	CONTROL PANEL ST/ST
2	024775	OVERLAY BAKBAR °C
	024776	OVERLAY BLUE SEAL °C
	024777	OVERLAY MOFFAT °F
3	021473	POWER SWITCH
4	020849	INDICATOR LIGHT
5	021472	THERMOSTAT KNOB
6	020823	TIMER KNOB
7	021476	ROAST N HOLD SWITCH
8	021474	STEAM SWITCH
9	024773	LIGHT SWITCH
10	024694	CONTROL PANEL HOOK
11	018223	HOLD THERMOSTAT
12	021538	HOLD STAT BRACKET
13	018209	HOLD STAT LABEL
14	018224	HOLD STAT KNOB
15	021442	TIMER MOUNTING PANEL
16	011419	3 HOUR TIMER (50Hz)
	011983	3 HOUR TIMER (60Hz)
17	021534	RELAY
18	011794	BUZZER
19	024703	BUZZER/RELAY BRACKET
20	011760	60 MINUTE TIMER
21	024774	THERMOSTAT 50-320°C

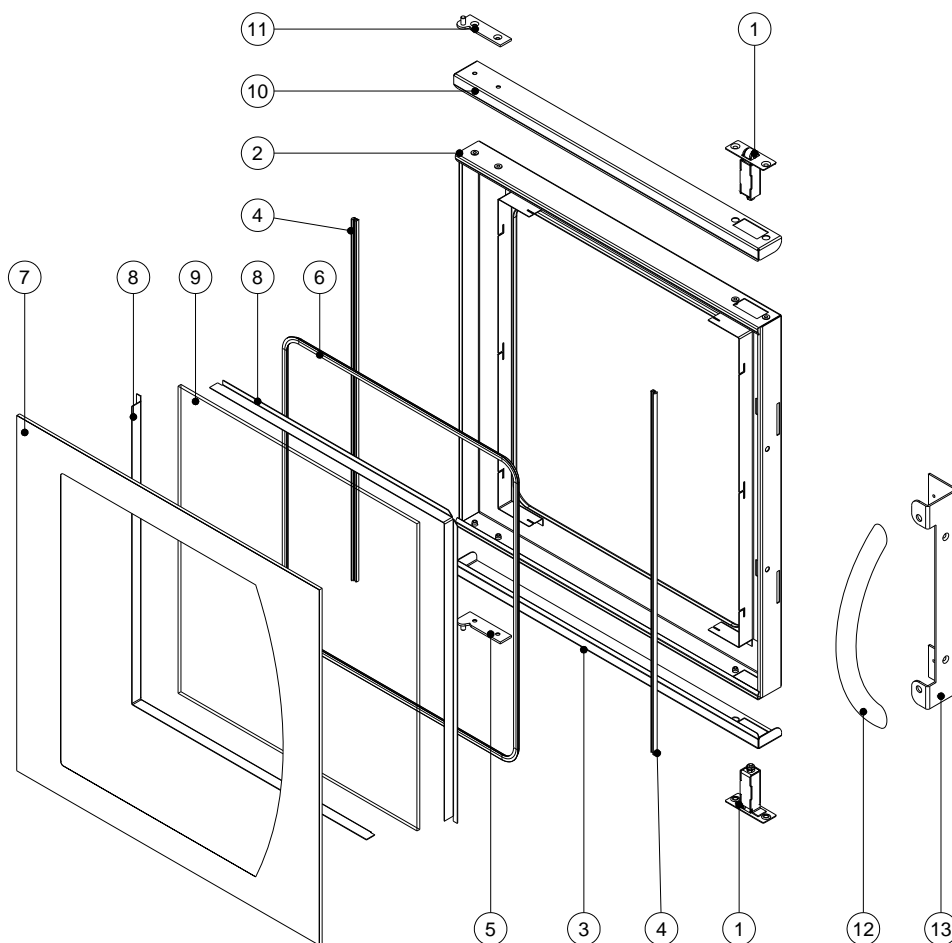
11.3 GEAR PLATE ASSEMBLY



Pos	Part No.	Description
1	024772	GEAR TRAY
2	014185	MAIN TERMINAL BLOCK
3	024567	MOTOR TIMER 240V
	024503	MOTOR TIMER 220V
4	015966	CONTACTOR
5	024432	CAPACITOR 3 μ F
6	002441	INSULATOR
7	002138	CABLE CLAMP

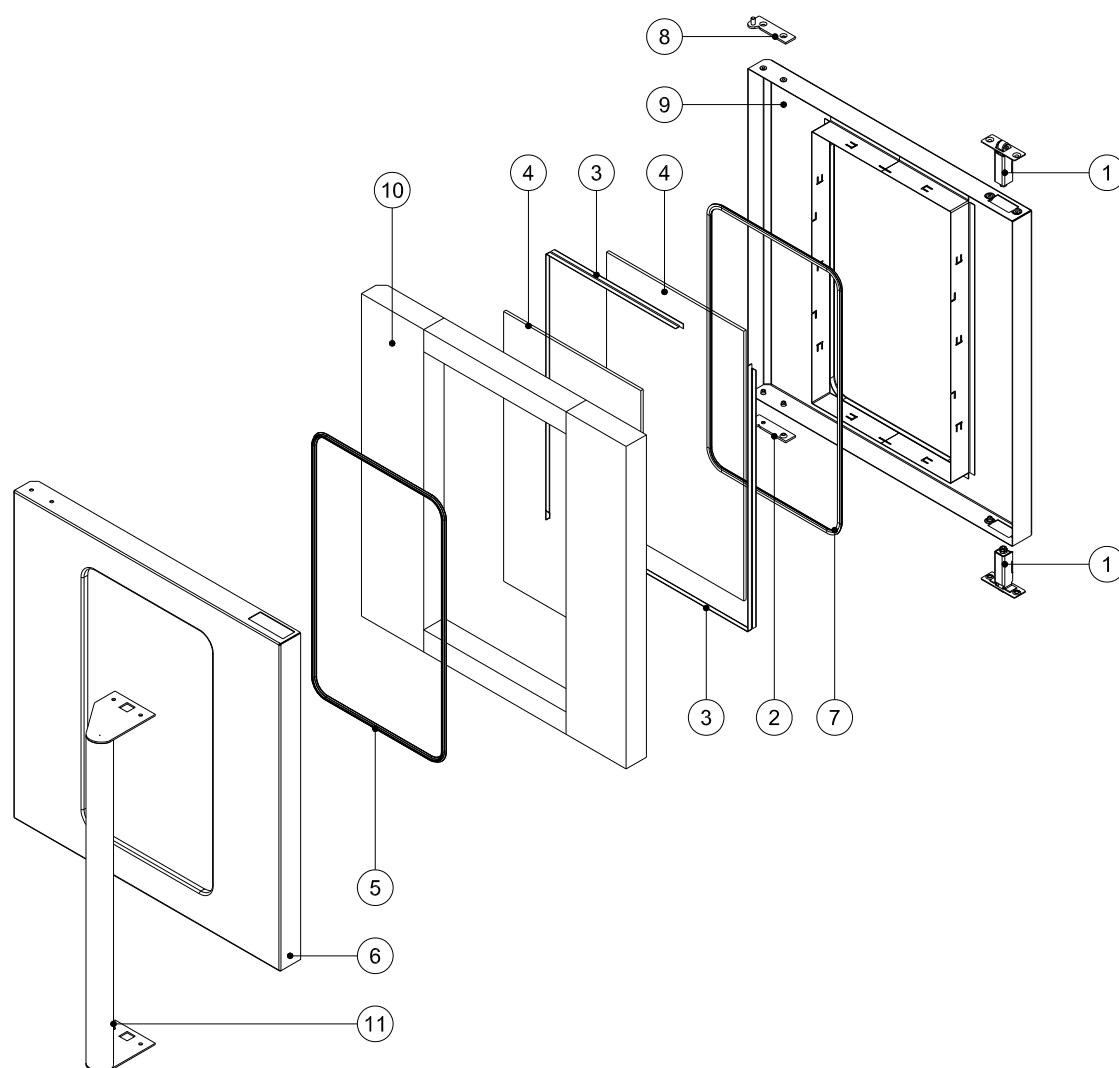
11.4 DOOR ASSEMBLY

11.4.1 E32M Glass Door Assembly



Pos	Part No.	Description
1	024809	ROLLER CATCH ASSEMBLY
2	004928	DOOR INNER ENAMELLED
3	024602	DOOR TRIM BOTTOM
4	090225	GLASS SEAL EXTRUSION (1.14m)
5	020083	BOTTOM HINGE ASSEMBLY
6	090201	GLASS SEAL EXTRUSION (1.74m)
7	024844	DOOR OUTER GLASS
8	004452	GLASS CLAMP ANGLE PAINTED
9	002340	DOOR INNER GLASS
10	024601	DOOR TRIM TOP
11	020082	TOP HINGE ASSEMBLY
12	021468	DOOR HANDLE
13	024599	DOOR HANDLE BRACKET
	SA1586	DOOR COMPLETE (EXCLUDES HANDLE & BRACKET)

11.4.2 E32MS Stainless Steel Door Assembly



Pos	Part No.	Description
1	024809	ROLLER CATCH ASSEMBLY
2	020083	BOTTOM HINGE ASSEMBLY
3	024605	GLASS CLAMP ANGLE
4	023063	DOOR WINDOW GLASS
5	090201	GLASS SEAL EXTRUSION (1.44m)
6	024845	DOOR OUTER PANEL
7	090201	GLASS SEAL EXTRUSION (1.44m)
8	020082	TOP HINGE ASSEMBLY
9	004957	DOOR INNER (ENAMELLED)
10	-----	INSULATION
11	024713	DOOR HANDLE
	SA1587	ST/ST DOOR COMPLETE