

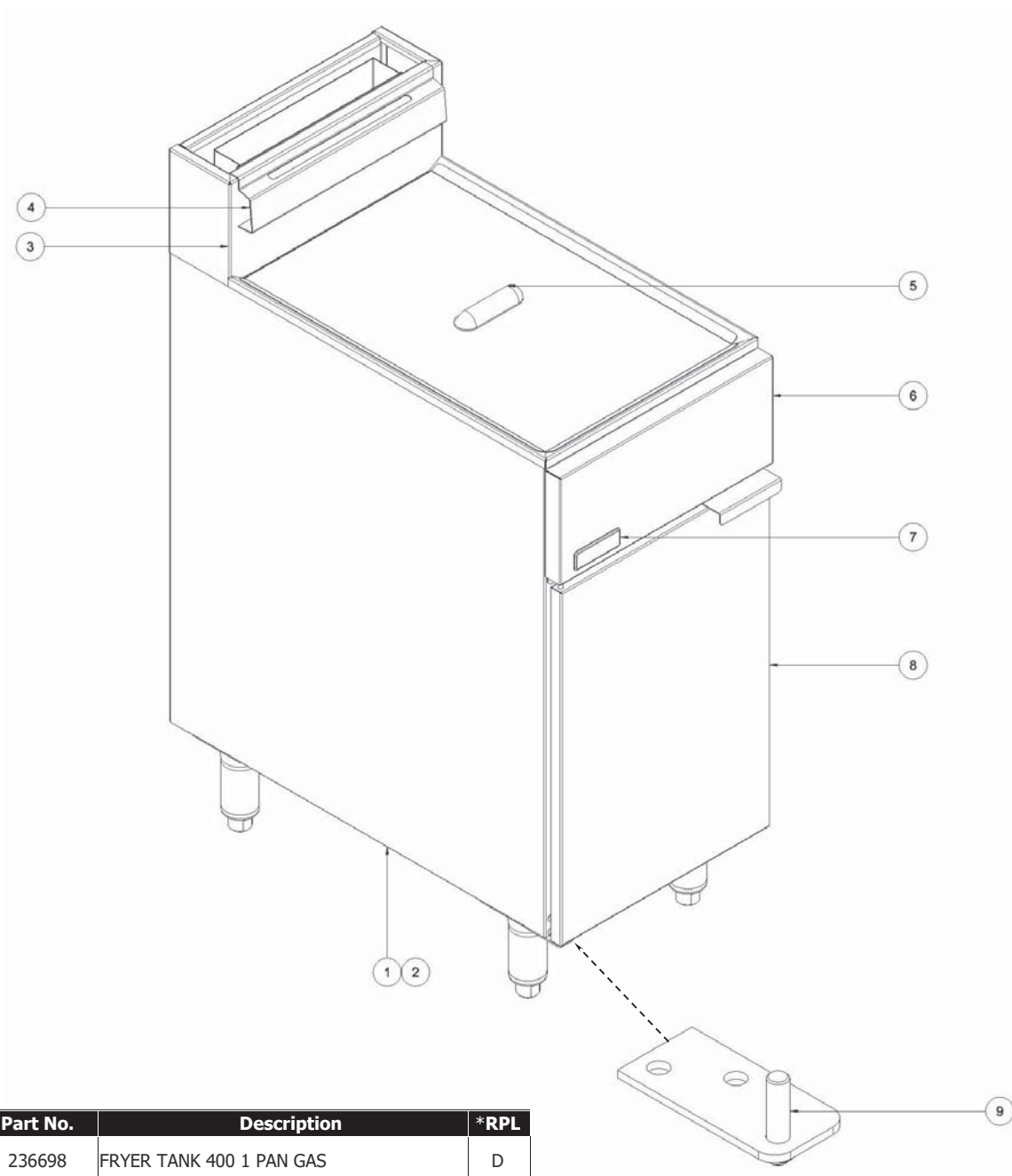
Gas Conversion Kits

Kit Part No.	Gas Type to Convert to	Markets
236934	Gas Conversion 400 Fryer - NAT GAS	AU / NZ / XP
236935	Gas Conversion 400 Fryer - LPG / PROPANE	AU / XP
236936	Gas Conversion 400 Fryer - LPG / BUTANE	NZ / XP
236937	Gas Conversion 400 Fryer - TOWNS	AU / NZ / XP
237021	Gas Conversion 400 Fryer - NAT (UK)	UK
237022	Gas Conversion 400 Fryer - PROPANE (UK)	UK

NOTE: A Gas Conversion Instruction Sheet is included with the Conversion Kit.

Exploded Parts Listings

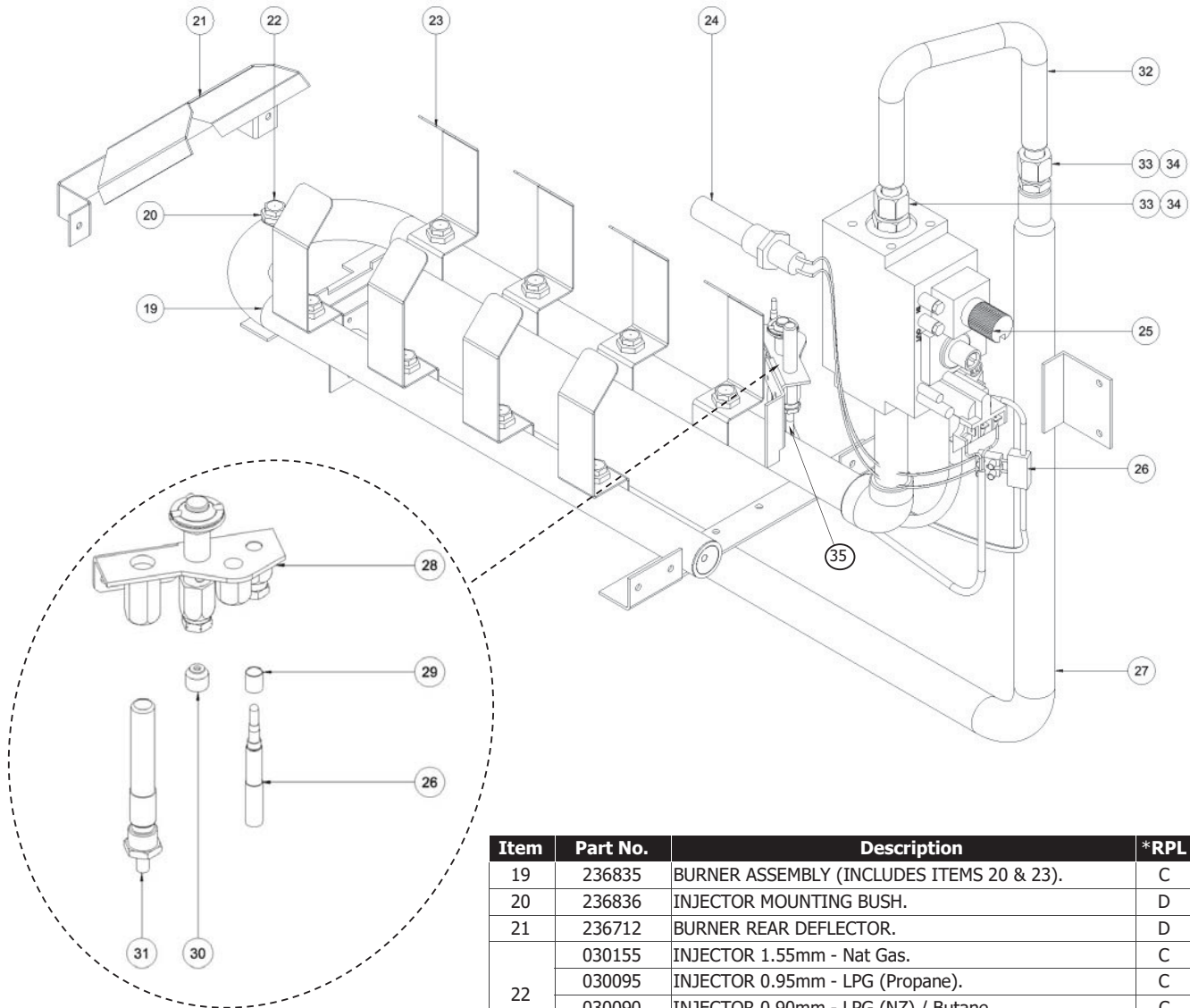
FastFri FF18 Fryer - Main Assembly



Item	Part No.	Description	*RPL
Not Shown	236698	FRYER TANK 400 1 PAN GAS	D
1	236722	FRYER SIDE PANEL LH	D
2	236720	FRYER SIDE PANEL RH	D
3	236719	SPLASHBACK FF18	D
4	236742	BASKET HANGER	D
5	236933	LID ASSY 400 FRYER	D
6	236847	FRONT COVER WA FF18	D
7	236952	BADGE FASTFRI	D
	228132	TUBE CLIP	D
	236976	DOOR ASSEMBLY FF18 (NO BADGE)	D
8	236823	DOOR HANDLE FF18	D
	236822	DOOR OUTER FF18	D
	236821	DOOR INNER FF18	D
9	236845	DOOR HINGE WA	D

* Recommended Parts Level	
RPL	Number of units in service
A	1-5
A+B	5-10
A+B+C	10-50
A+B+C+D	50+

FastFri FF18 Fryer - Burner Assembly

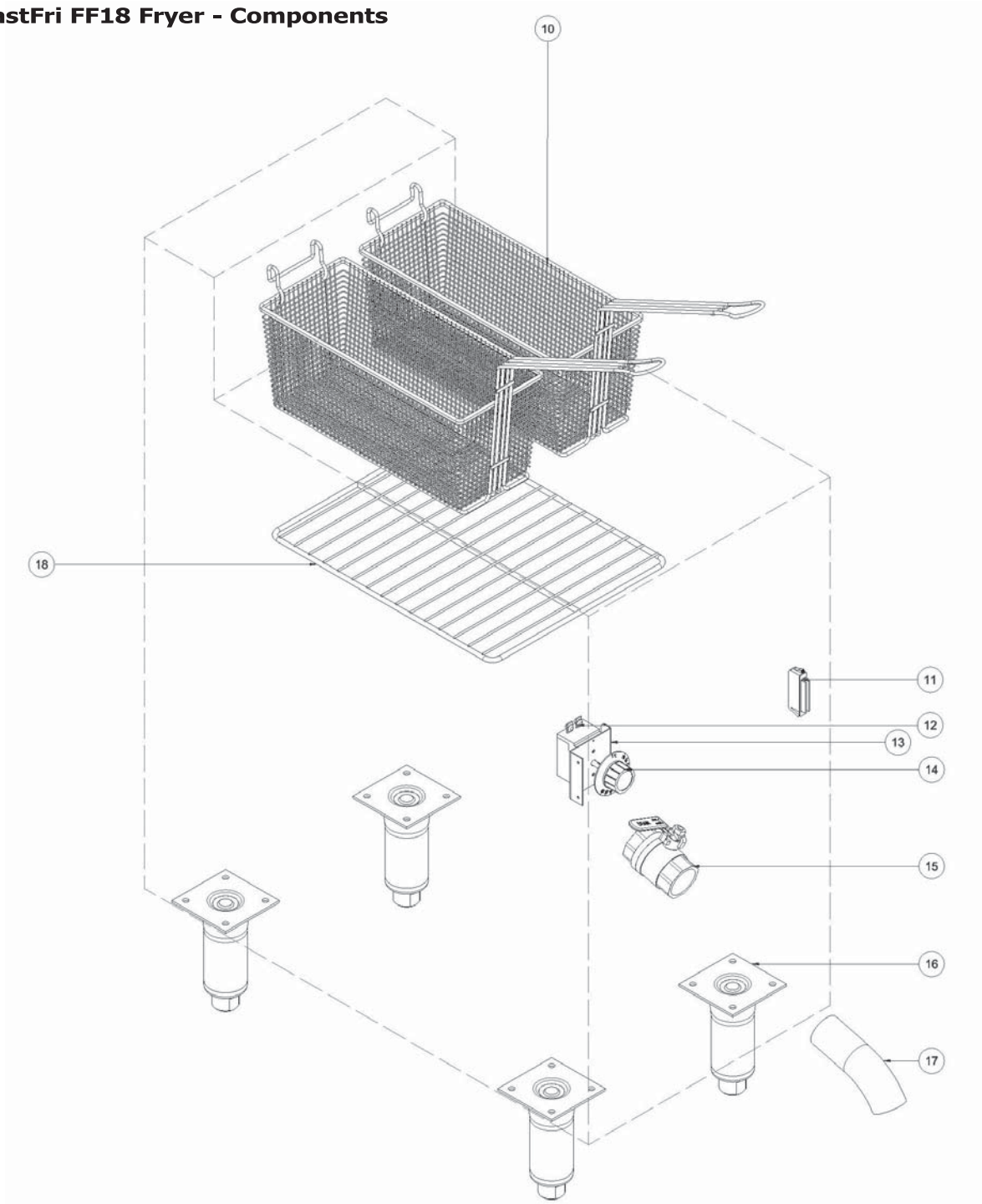


Item	Part No.	Description	*RPL
19	236835	BURNER ASSEMBLY (INCLUDES ITEMS 20 & 23).	C
20	236836	INJECTOR MOUNTING BUSH.	D
21	236712	BURNER REAR DEFLECTOR.	D
22	030155	INJECTOR 1.55mm - Nat Gas.	C
	030095	INJECTOR 0.95mm - LPG (Propane).	C
	030090	INJECTOR 0.90mm - LPG (NZ) / Butane.	C
	030260	INJECTOR 2.60mm - Town Gas.	C
23	236746	BURNER DEFLECTOR.	B
24	240851K	OVERTEMP CONTROL KIT.	A
25	018089K	GAS CONTROL SIT 820 MV KIT.	A
26	018094	THERMOCOUPLE INTERRUPTED.	A
27	236803	SUPPLY PIPE.	D
28	018090K	PILOT BURNER KIT (Not UK)	A
	025630K	PILOT BURNER KIT (UK Only)	A
	019487	OLIVE (Pilot Burner)	D
	018740	NUT (Pilot Burner)	D
29	018743	THERMOCOUPLE SPACER.	C
30	018091	PILOT INJECTOR - Nat Gas - 0.62mm (Non UK).	A
	018092	PILOT INJECTOR - LPG / Butane - 0.35mm (Non UK).	A
	018972	PILOT INJECTOR - Nat Gas (G20) - 0.45mm (UK Only).	A
	018971	PILOT INJECTOR - Propane (G31) - 0.30mm (UK Only).	A
	026393	PILOT INJECTOR - TOWNS - 0.75mm.	A
31	018093	THERMOPILE.	A
32	022845	TUBE FLEXIBLE SS 1/2" OD x 12".	D
33	233167	NUT (1/2" CC).	D
34	233168	OLIVE (1/2" CC).	D
35	237077	FLEXTUBE DORMONT T4 x 18".	D

* Recommended Parts Level

RPL	Number of units in service
A	1-5
A+B	5-10
A+B+C	10-50
A+B+C+D	50+

FastFri FF18 Fryer - Components



Item	Part No.	Description	*RPL
10	018019	FRYER BASKET -STANDARD	C
11	236804	MAGNET CATCH - EXTD POLES	C
12	236801	THERMOSTAT MV FRYER 100-190C	A
13	236820	THERMOSTAT MOUNTING BRACKET	C
14	236848	KNOB 100-190C FRYER	B
15	236795	BALL VALVE 1 1/4" 30mm NB	B
16	236769	LEG 150mm - ASSEMBLED	D
17	018147	DRAIN EXTENSION	D
18	236768	BASKET SUPPORT RACK	D

* Recommended Parts Level	
RPL	Number of units in service
A	1-5
A+B	5-10
A+B+C	10-50
A+B+C+D	50+