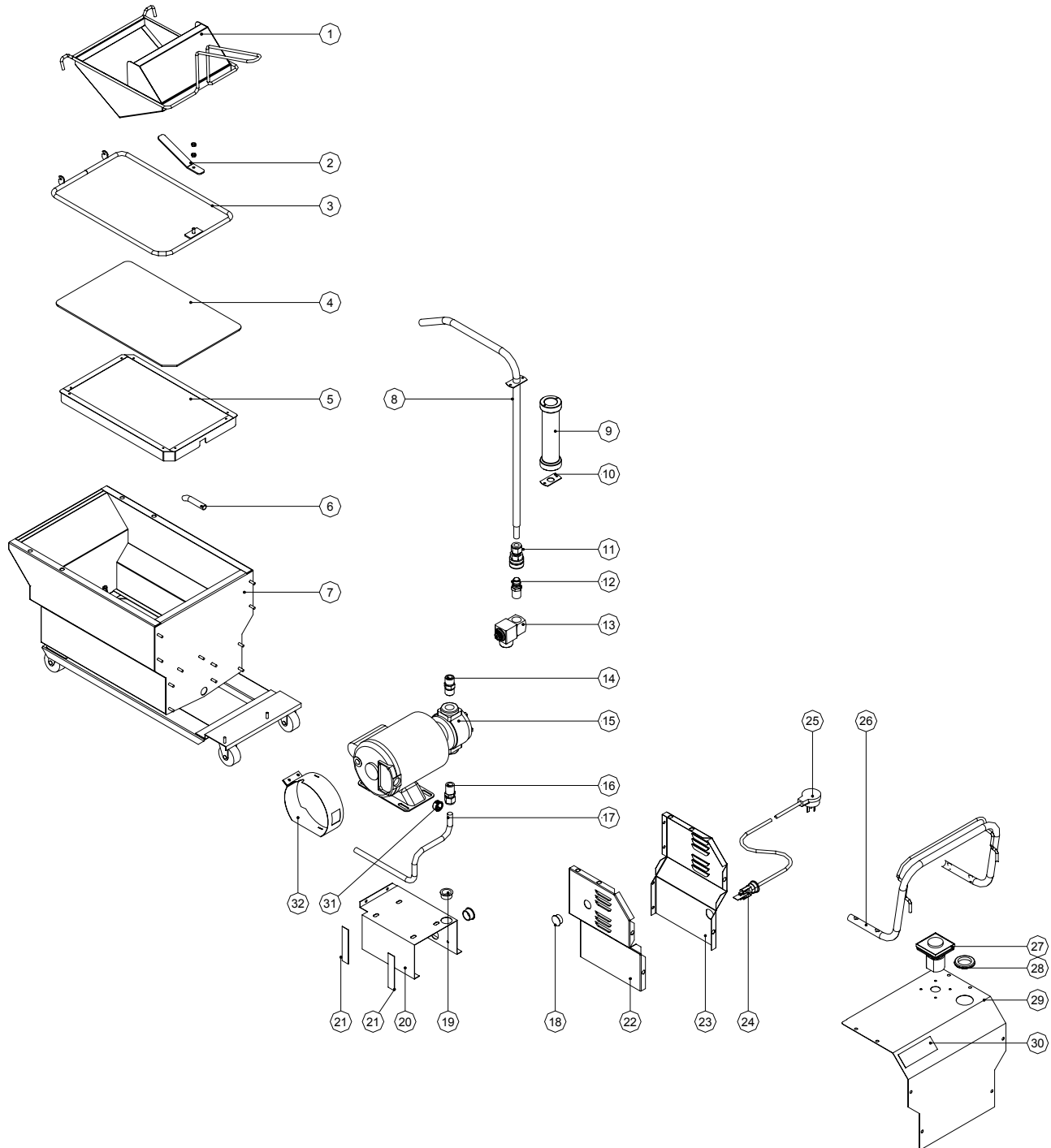


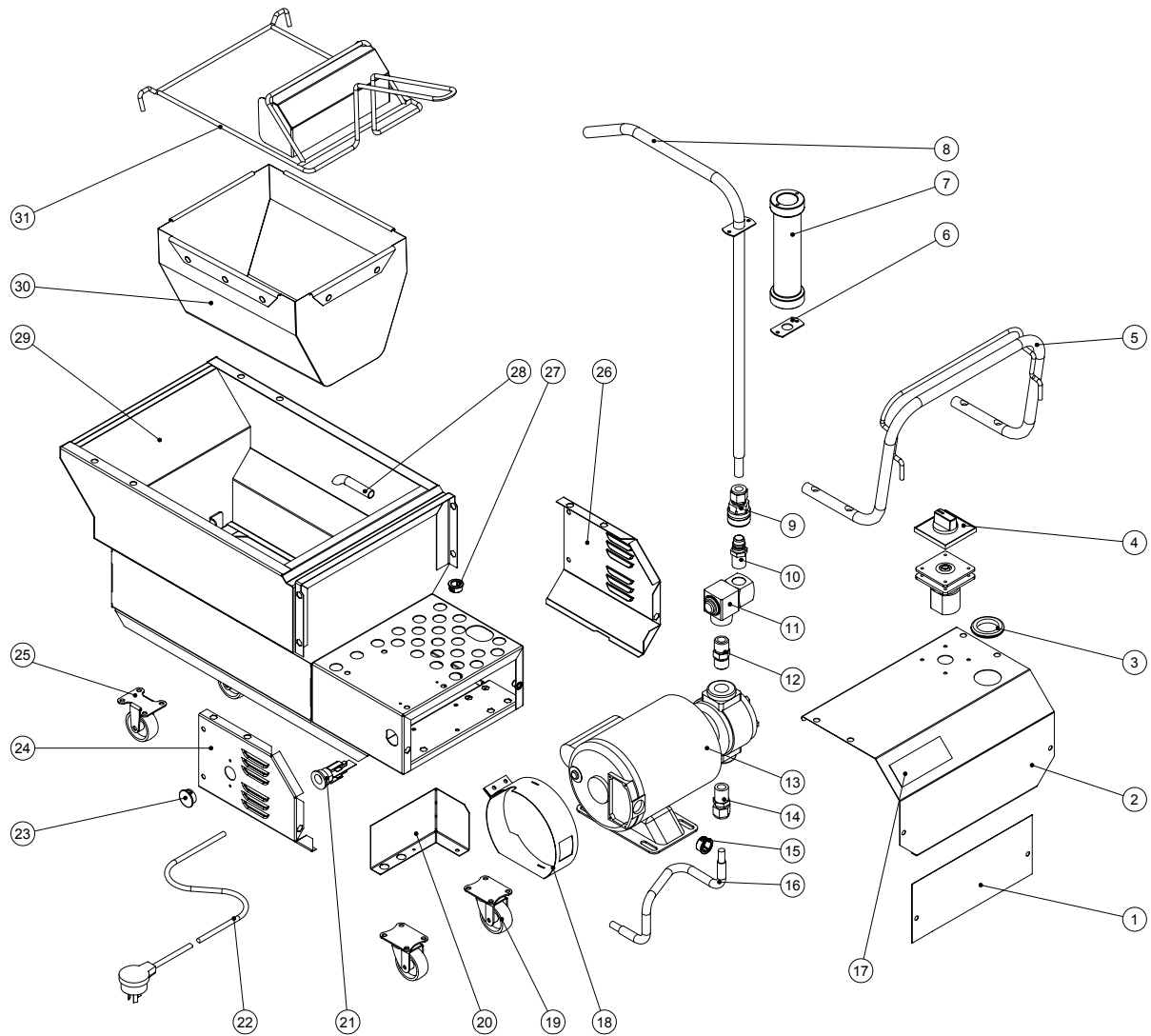
Pos	Part No.	Description
1	019784	FILTER BAG FRAME
2	019695	FILTER BAG
3	019697	PICK UP TUBE
4	019679	TANK
5	019774	RETURN TUBE
	020417	FLEXIBLE HOSE ASSY
	021224	LONG WAND ASSY
	021234	STANDARD WAND ASSY
	020934	RETURN TUBE - RED ROOSTER
	021235	RED ROOSTER WAND ASSY
6	019770	RETURN TUBE HANDLE
	020932	RETURN TUBE HANDLE – RED ROOSTER
7	019776	HANDLE STANDOFF
8	019684	COUPLING BODY
9	019683	CONNECT COUPLING
10	020717	SWIVEL UNION ASSY
11	019687	½" HEX NIPPLE
12	022115	PUMP & MOTOR ASSEMBLY
	025848	PUMP
	025754	PUMP MOTOR REPLACEMENT KIT
13	019688	2½ x ½" NIPPLE
14	019685	½" ELBOW
15	019808	PRY-OUT PLUG
16	019698	PUMP CONNECTION TUBE
17	019238	SNAP BUSH
18	019672	MOTOR MOUNTING BRACKET
19	090016	ADHESIVE TAPE
20	025672	SIDE PANEL - LH (FROM S/N 258529)
	019666	SIDE PANEL - LH (TO S/N 258528)
21	025673	SIDE PANEL - RH (FROM S/N 258529)
	019667	SIDE PANEL - RH (TO S/N 258528)
22	017369	CORD ENTRY CLAMP
23	002414	CORDSET (NZ & AUSTRALIA ONLY)
	020942	CORDSET 10 AMP – RED ROOSTER
	017453	CORDSET (UK ONLY)
	012877	CORDSET (ASIA ONLY)
24	019668	FRYER FILTER HANDLE
	020931	FRYER FILTER HANDLE – RED ROOSTER
25	023007	MOTOR SWITCH
	023008	MOTOR SWITCH SEAL KIT (UP TO S/N 130999) – NOT ILLUSTRATED
26	010761	GROMMET 1½"
27	019669	FRONT COVER PANEL
28	019772	NAME BADGE
29	024370	SNAP BUSH 22mm (FROM S/N 224820)
30	025677	MOTOR COWLING (FROM S/N 258529)



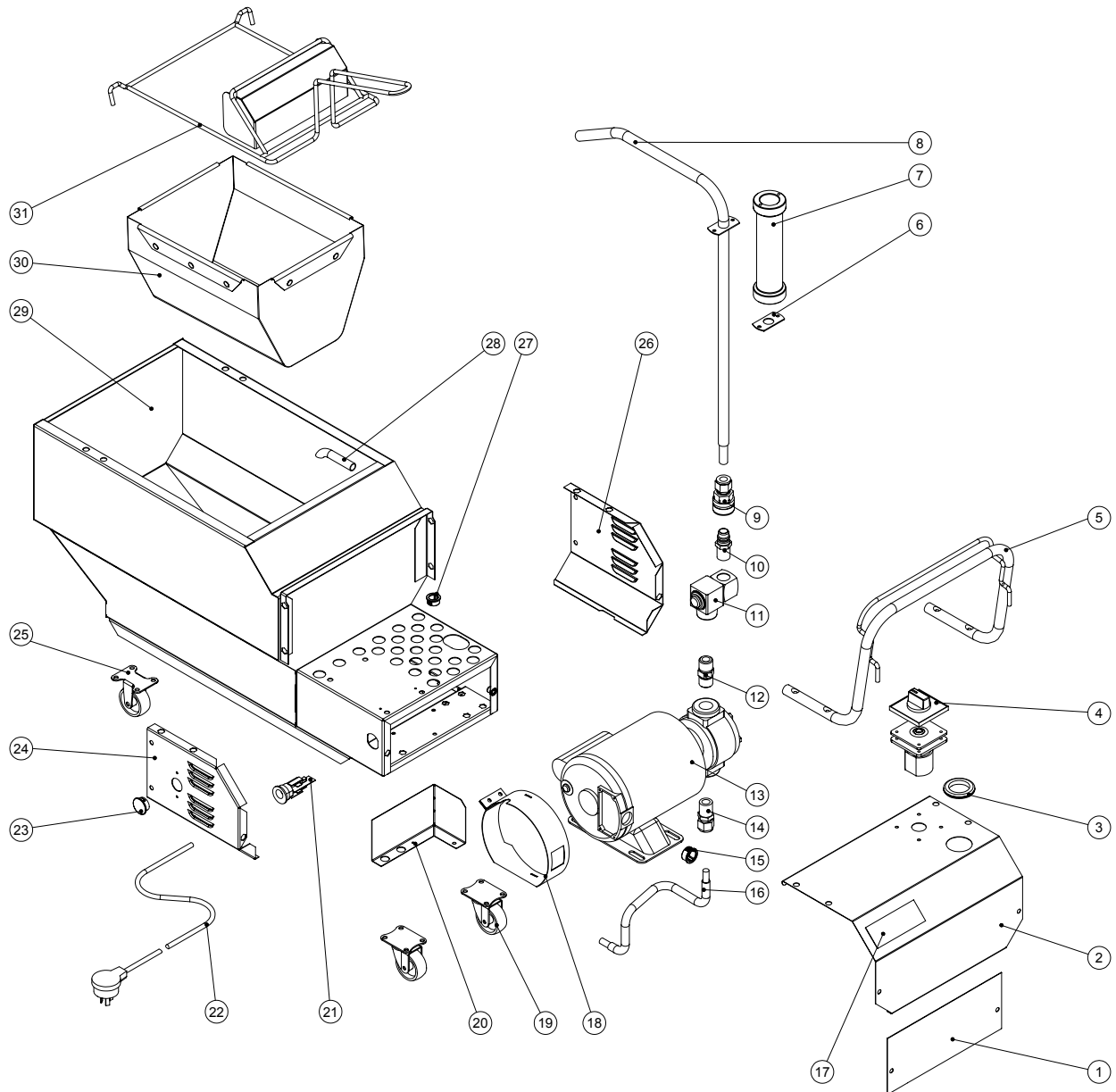
EF30P SPARE PARTS LIST

Page 2/2
3.2 MAIN ASSEMBLY
TO S/N 271803

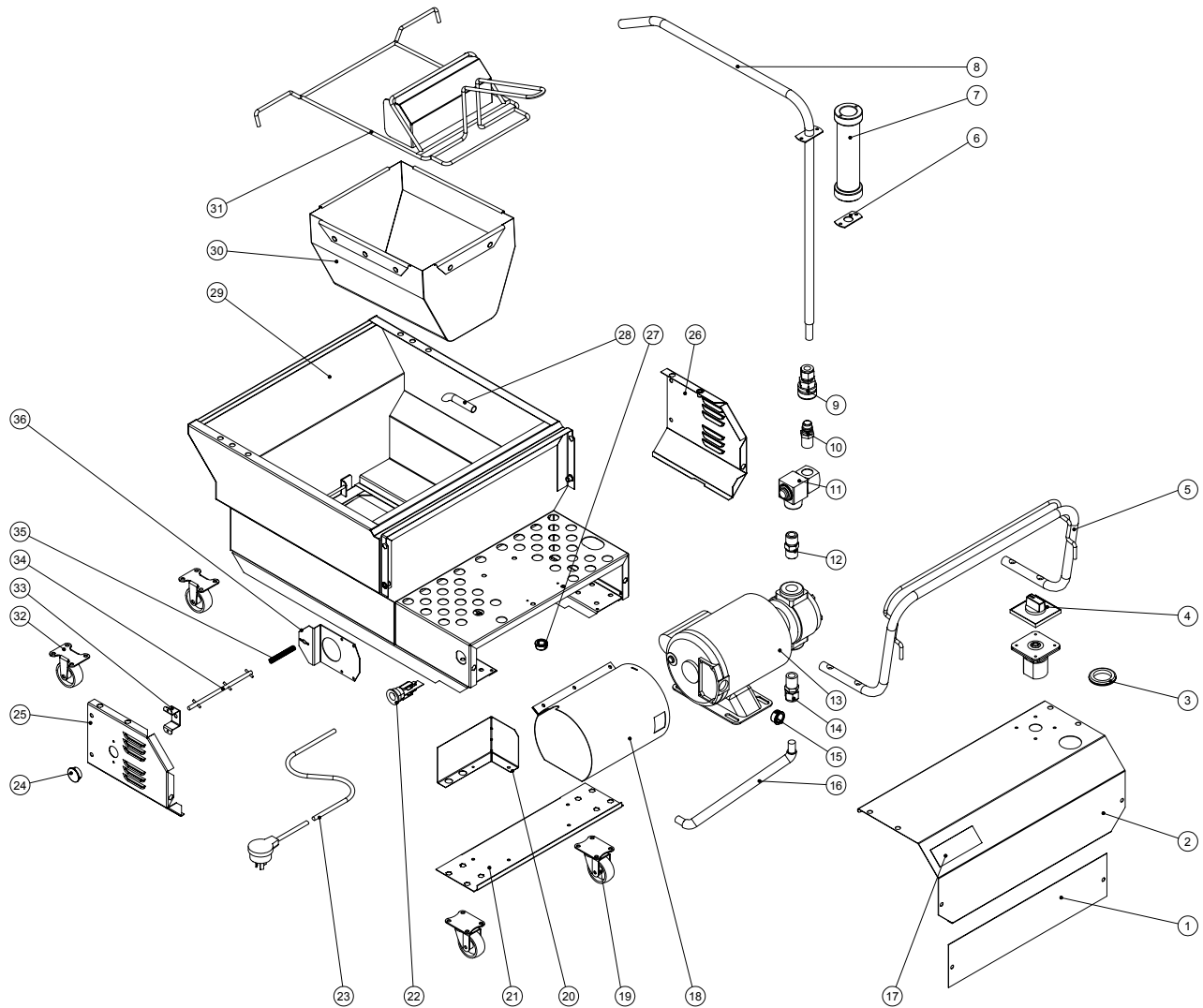
Pos	Part No.	Description
1	022806	STRAINER FRAME
2	022820	LATCH HANDLE
3	022816	FILTER CLAMP
4	022815	FILTER PAD, FILCO SUPER SORB (BOX OF 30)
5	022821	FILTER PLATE
6	022814	PICK-UP TUBE
7	022838	TANK GENERAL
8	019774	RETURN TUBE (SOLID TUBE ONLY)
8	020417	RETURN TUBE (FLEXIBLE TUBE ONLY)
9	019770	RETURN TUBE HANDLE (SOLID TUBE ONLY)
10	019776	HANDLE STAND-OFF (SOLID TUBE ONLY)
11	023209	COUPLING SLEEVED
12	019683	QUICK CONNECT COUPLING STEM
13	020717	SWIVEL UNION ASSEMBLY
14	019687	HEX NIPPLE 1/2"
15	022115	PUMP and MOTOR ASSEMBLY
	025848	PUMP
	025754	PUMP MOTOR REPLACEMENT KIT
16	022805	CONNECTOR 1/2"
17	022845	TUBE, 1/2" ST/ST FLEXIBLE
18	019808	PLUG ø22mm
19	019238	SNAP BUSH 26mm
20	019672	MOTOR MOUNTING BRACKET
21	090016	INSEAL 15mmx1.5mm 90mm LONG
22	025672	SIDE PANEL LH (FROM S/N 258529)
	019666	SIDE PANEL LH (TO S/N 258528)
23	025673	SIDE PANEL RH (FROM S/N 258529)
	019667	SIDE PANEL RH (TO S/N 258528)
24	017369	CORD ENTRY CLAMP
25	002414	CORDSET 10A (NZ & AUST ONLY)
	012877	POWERFLEX CORD (ASIA ONLY)
	017453	CORDSET 13 AMP (UK ONLY)
26	019668	FRYER FILTER HANDLE
27	023007	MOTOR SWITCH
28	010761	GROMMET 1½"
29	019669	FRONT COVER PANEL
	090020	INSEAL 18mmx3mm 322mm LONG
30	019772	NAME BADGE - BLUE SEAL
31	024370	SNAP BUSH 22mm (FROM S/N 224820)
32	025677	MOTOR COWLING (FROM S/N 258529)



Pos	Part No.	Description
1	025838	Electrical Cover Panel
2	025485	Front Cover Panel
3	010761	Grommet 1 1/2"
4	023007	Motor switch c/w Knob & Seal
5	019668	Handle
6	019776	Handle Standoff
7	019770	Return Tube Handle
8	019774	Return Tube
9	019684	Quick Connect Coupling Body
10	019683	Quick Connect Coupling Stem
11	020717	Swivel Union
12	019687	1/2" Hex Nipple
13	022115	Motor Pump Assembly
	025848	Pump
14	022805	1/2" Connector Male
15	024370	Snap Bush
16	022845	Flexible Tube
17	019772	Name Plate - Blue Seal Filtamax
18	025654	Motor Cowling
19	019691	Castor - Swivel
20	025518	Wiring Guard
21	017369	Cord Entry Clamp
22	002414	Cord Set (NZ & Australia only)
	012877	Cord Set (Asia only)
	017453	Cord Set (UK only)
	012289	Cord Set (110-120V only)
23	019808	Blanking Plug 22mm
24	025486	Side Panel LH
25	019692	Castor - Rigid
26	025487	Side Panel RH
27	019239	Snap Bush 19mm
28	022814	Pick Up Tube
29	025490	Tank WA
30	019695	Filter Bag
31	019784	Filter Bag Frame



Pos	Part No.	Description
1	025838	Electrical Cover Panel
2	025485	Front Cover Panel
3	010761	Grommet 1 1/2"
4	023007	Motor switch c/w Knob & Seal
5	019668	Handle
6	019776	Handle Standoff
7	019770	Return Tube Handle
8	019774	Return Tube
9	019684	Quick Connect Coupling Body
10	019683	Quick Connect Coupling Stem
11	020717	Swivel Union
12	019687	1/2" Hex Nipple
13	022115	Motor Pump Assembly
	025848	Pump
14	022805	1/2" Connector Male
15	024370	Snap Bush
16	022845	Flexible Tube
17	019772	Name Plate - Blue Seal Filtamax
18	025654	Motor Cowling
19	019691	Castor - Swivel
20	025518	Wiring Guard
21	017369	Cord Entry Clamp
22	002414	Cord Set (NZ & Australia only)
	012877	Cord Set (Asia only)
	017453	Cord Set (UK only)
	012289	Cord Set (110-120V only)
23	019808	Blanking Plug 22mm
24	025486	Side Panel LH
25	019692	Castor - Rigid
26	025487	Side Panel RH
27	019239	Snap Bush 19mm
28	022814	Pick Up Tube
29	025662	Tank WA
30	019695	Filter Bag
31	019784	Filter Bag Frame



Pos	Part No.	Description
1	025839	Electrical Cover Panel
2	025527	Front Cover Panel
3	010761	Grommet 1 1/2"
4	023007	Motor switch c/w Knob & Seal
5	024008	Handle
6	019776	Handle Standoff
7	019770	Return Tube Handle
8	024757	Return Tube
9	019684	Quick Connect Coupling Body
10	019683	Quick Connect Coupling Stem
11	020717	Swivel Union
12	019687	1/2" Hex Nipple
13	022115	Motor Pump Assembly
	025848	Pump
14	022805	1/2" Connector Male
15	024370	Snap Bush
16	022845	Flexible Tube
17	019772	Name Plate - Blue Seal Filtamax
18	025653	Motor Cowling
19	019691	Castor - Swivel
20	025518	Wiring Guard
21	025505	Front Channel
22	017369	Cord Entry Clamp
23	002414	Cord Set (NZ & Australia only)
	012877	Cord Set (Asia only)
	017453	Cord Set (UK only)
	012289	Cord Set (110-120V only)
24	019808	Blanking Plug 22mm
25	025486	Side Panel LH
26	025487	Side Panel RH
27	019239	Snap Bush 19mm
28	022814	Pick Up Tube
29	025542	Tank WA
30	019695	Filter Bag
31	025521	Filter Bag Frame
32	019692	Castor - Rigid
33	025540	Filter Reset Bracket
34	025496	Motor Reset Extension
35	024121	Motor Reset Spring
36	024116	Motor Reset Bracket