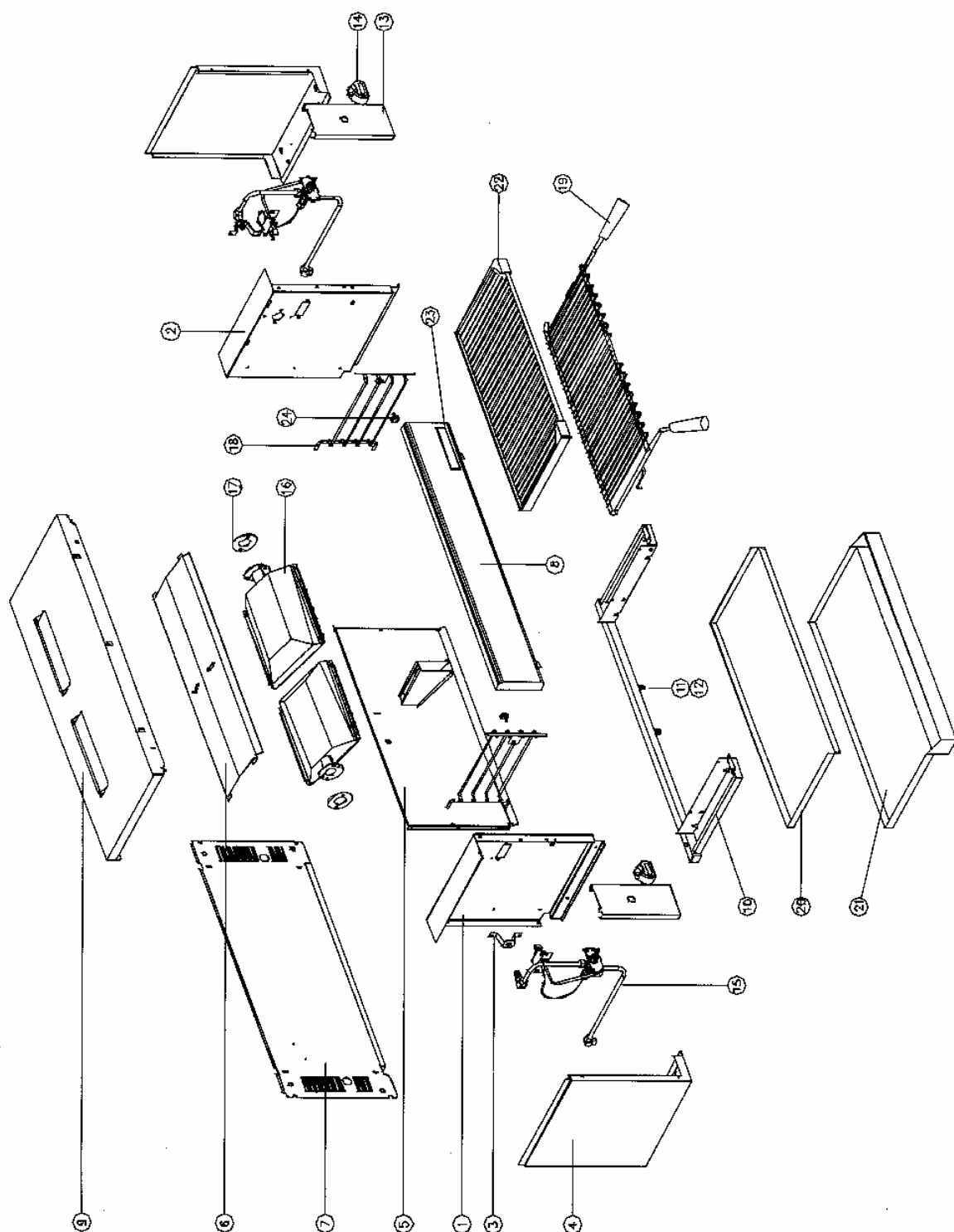


8. PARTS DIAGRAM

8.1 MAIN ASSEMBLY (to S/N 282981)

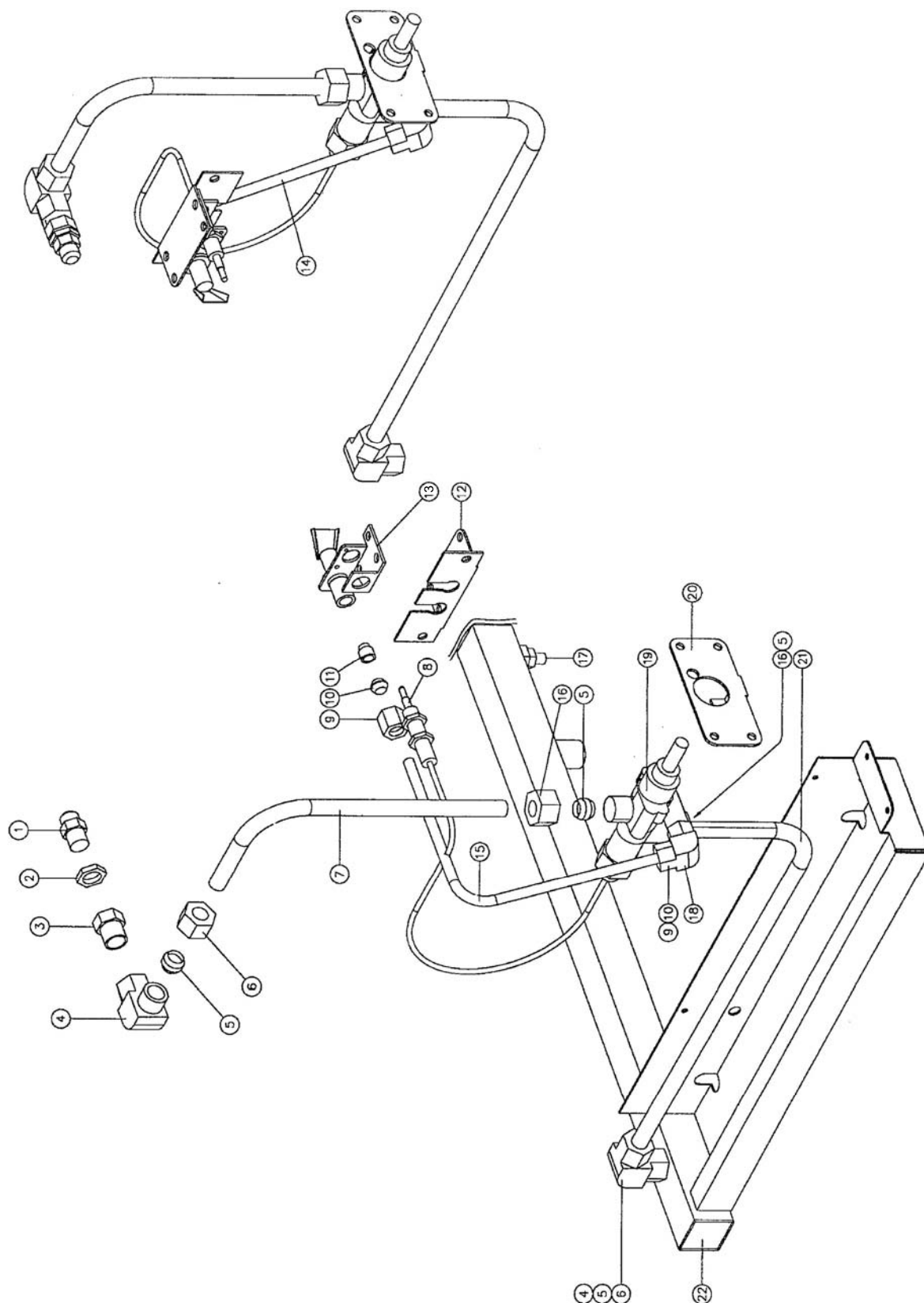


Pos	Part No.	Description
1	004040	INNER PANEL - L.H – TO S/N 214583
	004883	INNER PANEL - L.H – FROM S/N 214584
2	004041	INNER PANEL - R.H – TO S/N 214583
	004884	INNER PANEL - R.H – FROM S/N 214584
3	017808	INJECTOR SUPPORT BRACKET
4	013879	SIDE PANEL
5	013332	REAR REFLECTOR – TO S/N 214583
	023958	REAR REFLECTOR – FROM S/N 214584
6	013331	TOP REFLECTOR
7	013872	BACK PANEL
8	015488	FRONT COVER
9	015487	TOP COVER
10	004519	MANIFOLD (REFER SECTION 8.2)
11	019220	PRESSURE TEST POINT
12	011147	REDUCING BUSH - 1/4" x 1/8"
13	004119	CONTROL PANEL
14	014299	KNOB ASSEMBLY
15	017799	PIPING ASSEMBLY (REFER SECTION 8.2)
16	013336K	BURNER ASSEMBLY KIT (INCLUDES ITEM 17)
	013366K	BURNER PLAQUE KIT - MODIFIED (INCLUDES ITEM 17)
	014577	BURNER GUARD
17	013367	BURNER GASKET
18	017965	SIDE RACK – TO S/N 214583
	023961	SIDE RACK – FROM S/N 214584
19	017963	RACK
	013395	RACK HANDLE
20	013315	BOTTOM TRAY
21	004050	TROUGH TRAY (SN8200G-B ONLY)
	013362	DRAIN VALVE (NOT ILLUSTRATED)
22	013418	BRANDING PLATE (SN8200G-B ONLY)
23	020054	NAME BADGE
	013048	LEG - 4" (NOT ILLUSTRATED)
	015080	FOOT PAD - 1" (NOT ILLUSTRATED)
	013347	WALL MOUNTING BRACKET (NOT ILLUSTRATED)
	013908	SPACER ASSEMBLY (NOT ILLUSTRATED)
24	023068	SIDE RACK SCREW – FROM S/N 214584

GAS CONVERSIONS

012460	NAT -> LPG
012515	LPG -> NAT

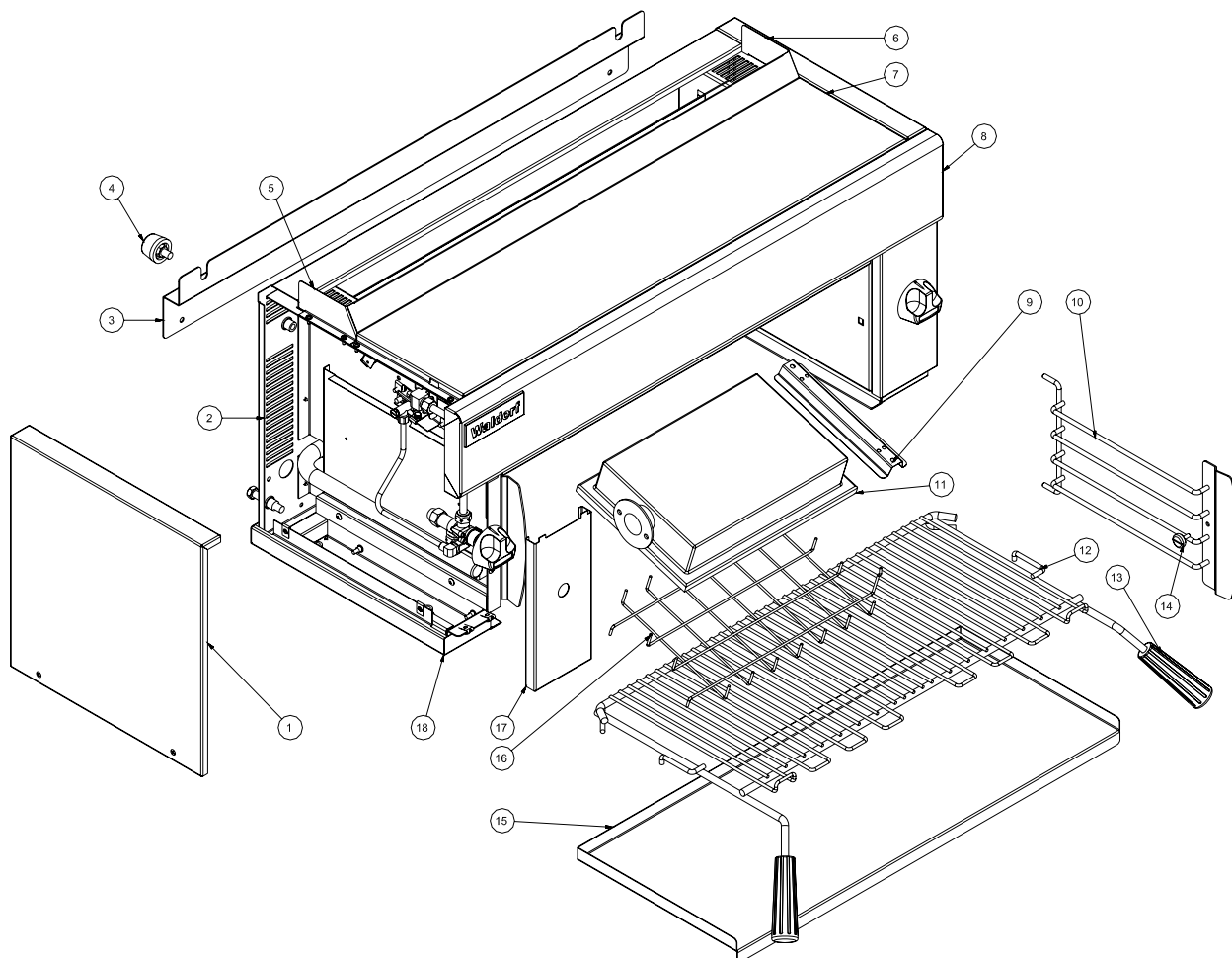
8.2 GAS PIPING ASSEMBLY (to S/N 282981)



Pos	Part No.	Description
1	032100	INJECTOR Ø1.00 mm - LPG
	032165	INJECTOR Ø1.65 mm - NATURAL GAS
2	025093	LOCKNUT (FROM S/N 246144)
	011740	JET BACKNUT (UP TO S/N 246143)
3	025091	MOUNTING BUSH (FROM S/N 246144)
	011147	REDUCING BUSH - $\frac{1}{4}$ " x $\frac{1}{8}$ " (UP TO S/N 246143)
4	015155	ELBOW $\frac{3}{8}$ " x $\frac{1}{4}$ " F
	017815	HEX NIPPLE $\frac{1}{4}$ "
5	015153	OLIVE - $\frac{3}{8}$ "
6	018978	COMPRESSION NUT
7	017809	INJECTOR SUPPLY PIPE
8	013848	THERMOCOUPLE
	024573	THERMOCOUPLE LOCK-NUT (NOT ILLUSTRATED)
9	011287	NUT - $\frac{1}{4}$ "
10	011286	OLIVE - $\frac{1}{4}$ "
11	011650	PILOT INJECTOR Ø0.010" - LPG
	011651	PILOT INJECTOR Ø0.018" - NATURAL GAS
12	013342	PILOT BRACKET
13	020120K	PILOT BURNER KIT (INCLUDES ITEMS 9,10,11)
14	017812	PILOT TUBE - R.H
15	017811	PILOT TUBE - L.H
16	018978	NUT
17	019220	PRESSURE TEST POINT
18	013836	ELBOW
19	017800	GAS CONTROL
20	017807	GAS CONTROL BRACKET
21	017810	SUPPLY TUBE
22	004519	MANIFOLD
	011853	REGULATOR - NATURAL GAS ONLY (NOT ILLUSTRATED)

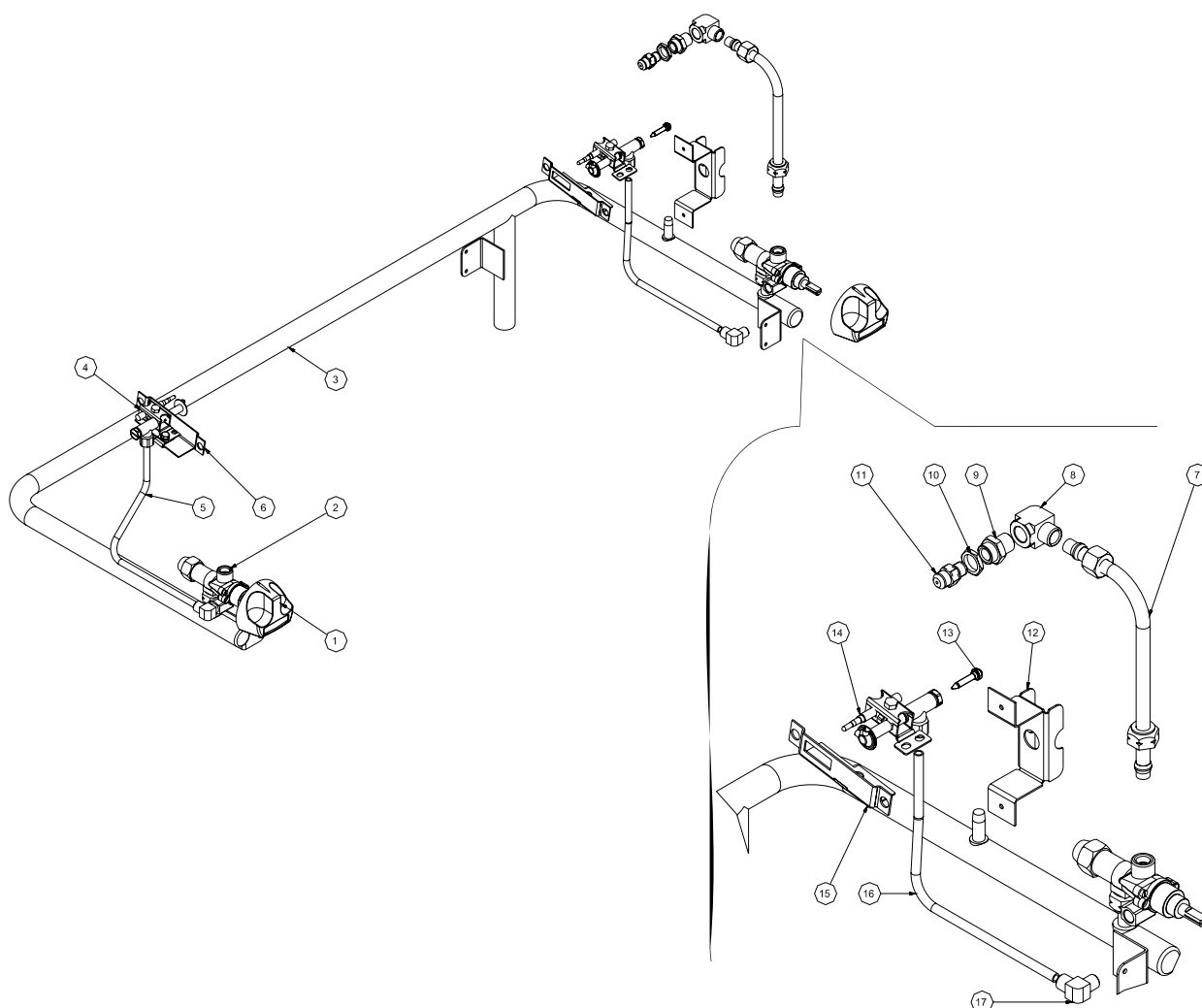
9. PARTS DIAGRAM

9.1 SN8200G MAIN ASSEMBLY (from S/N 282982)



Pos	Part No.	Description
1	026094	Side Panel
2	026086	Back Panel
3	026096	Wall Mounting Bracket
4	013908	Spacer Assembly
5	026089	Flue End LH
6	026090	Flue End RH
7	026113	Top Cover Panel
8	026130	Front Cover WA
9	026077	Burner Retaining Channel
10	026093	Side Rack WA - Salamander
11	019214K	Infra-Red Burner Kit
12	017963	Rack
13	013395	Rack Handle
14	023068	Side Rack Screw
15	026095	Crumb Tray
16	026123	Burner Guard
17	005016	Control Panel
18	026091	Tray Support

9.2 SN8200G GAS PIPING ASSEMBLY (from S/N 282982)



Pos	Part No.	Description
1	014299	Knob Assembly Waldorf
2	017800	Gas Control
3	026078	Manifold
4	026133K	Pilot Burner Kit (c/w Nat and LPG Injectors)
5	026081	Pilot Supply Tube LH
6	026080	Pilot Mounting Bracket LH
7	026079	Injector Supply Tube
8	015155	Elbow $\frac{3}{8}$ " Comp x $\frac{1}{4}$ " BSP Female Brass
9	025091	Mounting Bush
10	025093	Locknut M14x1
11	032120	Injector 1.20mm (LPG - Non-UK)
	032190	Injector 1.90mm (Natural Gas - Non-UK)
	032105	Injector 1.05mm (LPG - UK Only)
	032165	Injector 1.65mm (Natural Gas - UK Only)
12	026072	Injector Mounting Bracket
13	026134	Pilot Injector Spud Ø0.30mm (Natural Gas)
	026136	Pilot Injector Spud Ø0.20mm (LPG)
14	019218	Thermocouple 450mm
15	026082	Pilot Mounting Bracket RH
16	026083	Pilot Supply Tube RH
17	013836	Elbow $\frac{1}{4}$ "T x $\frac{1}{4}$ " BSP Male