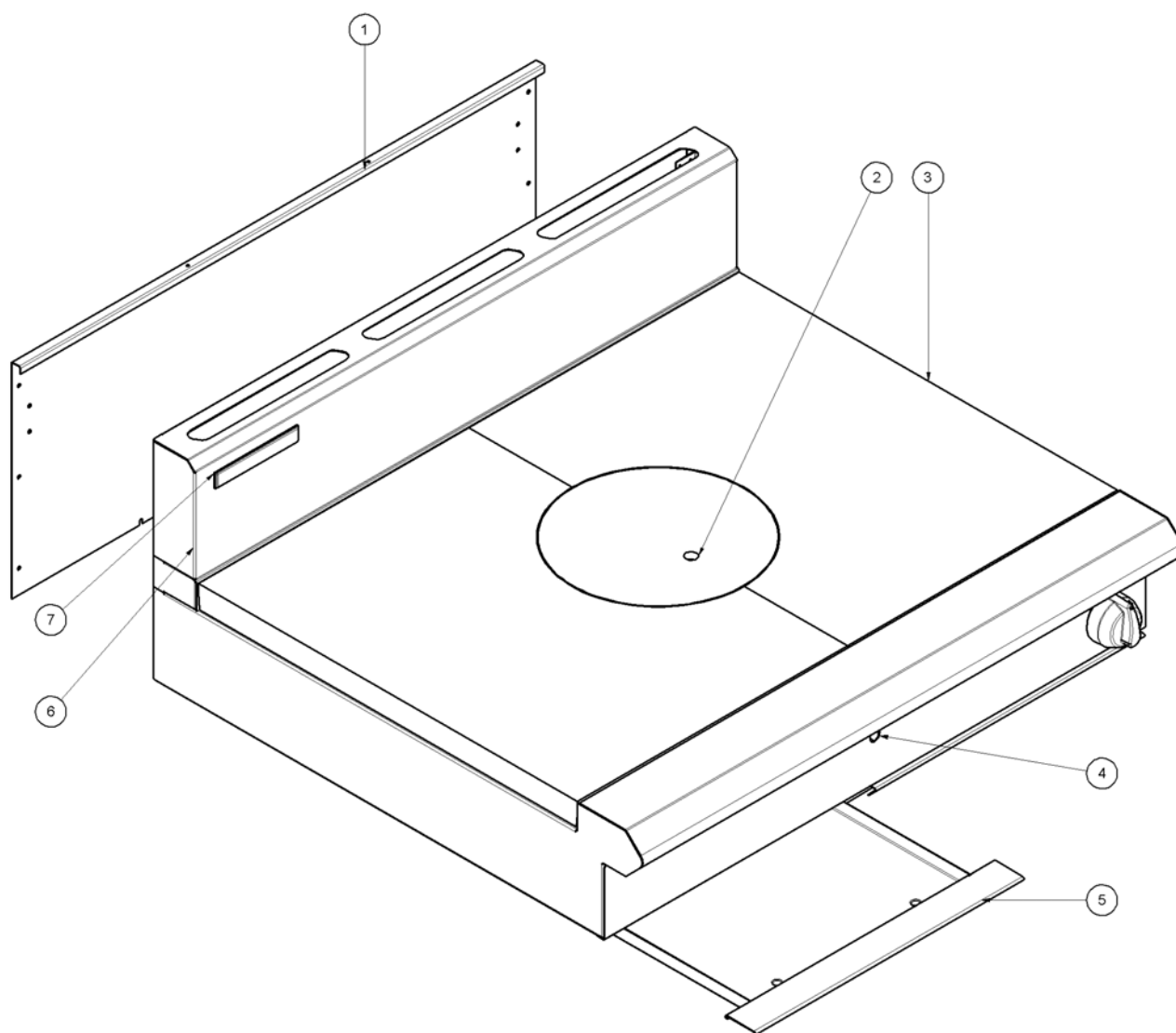


8.1 G57 Target Top

8.1.1 Main Assembly

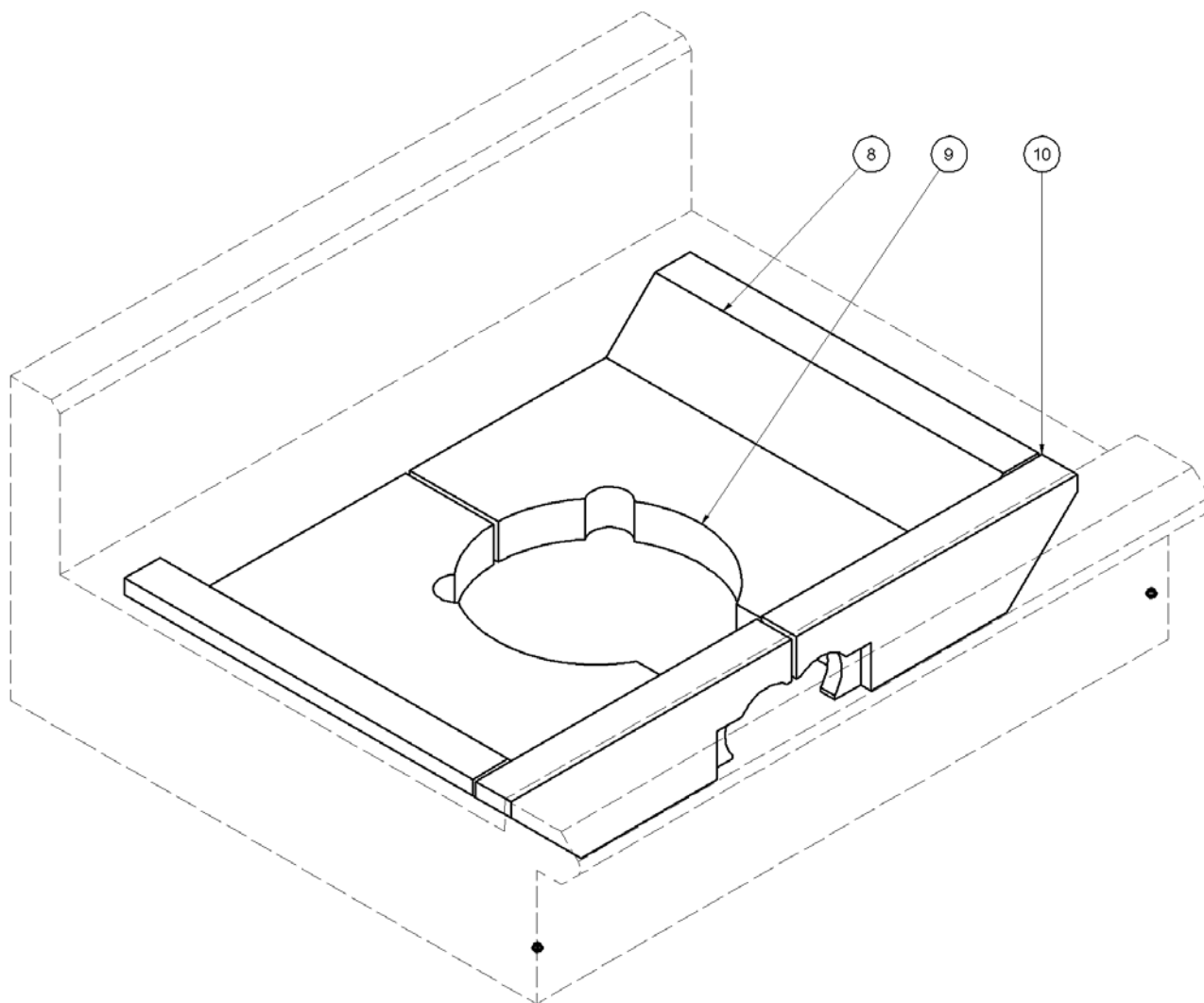


| ITEM | PART NO | DESCRIPTION | *RPL |
|------|---------|---------------------------|------|
| 1 | 227836 | BACK PANEL | D |
| 2 | 227012 | CENTRE RING CASTING | D |
| 3 | 227013 | HALF CASTING | D |
| 4 | 227552 | CONTROL PANEL | D |
| 5 | 230273 | SPELL TRAY 450mm WA BSEAL | D |
| 6 | 228673 | SPLASHBACK BSEAL | D |
| 7 | 227960 | BLUE SEAL BADGE | D |

| Recommended Parts Level | |
|-------------------------|----------------------------|
| *RPL | Number of units in service |
| A | 1-5 |
| B | 5-10 |
| C | 10-50 |
| D | 50+ |

8 Exploded Parts Diagrams

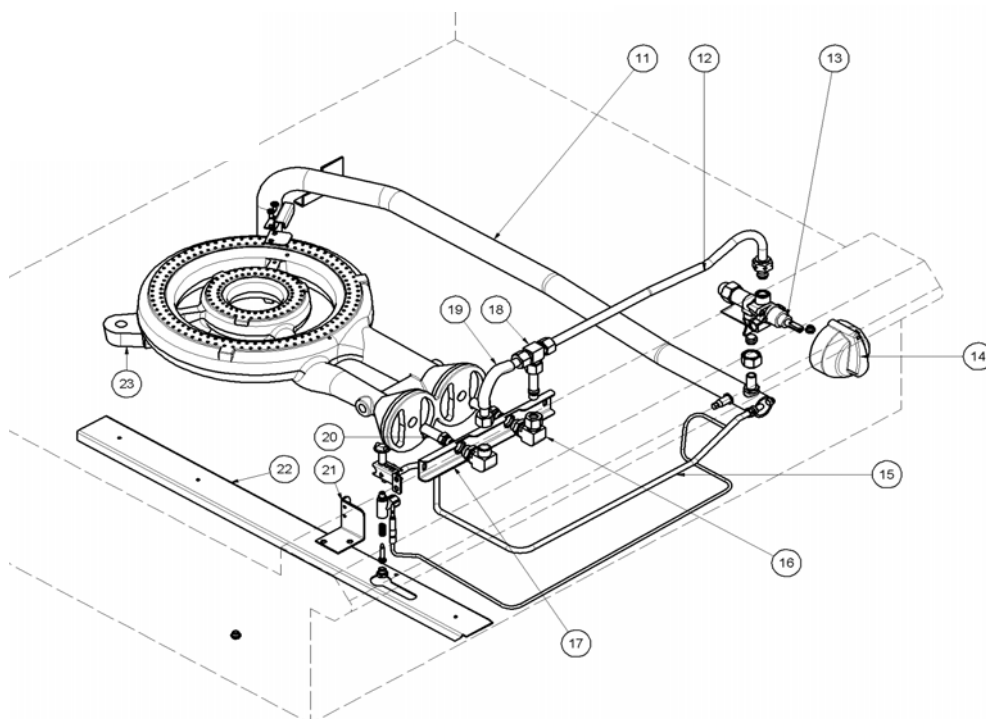
8.1.2 Insulation



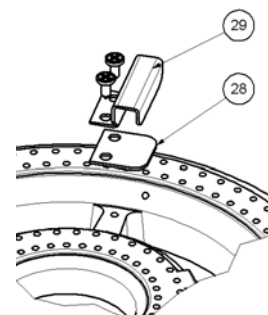
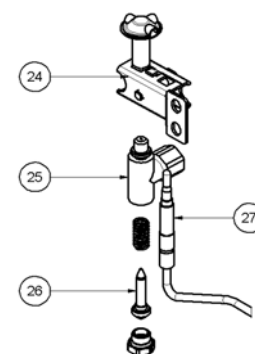
| ITEM | PART NO | DESCRIPTION | *RPL |
|------|---------|------------------------|------|
| 8 | 227009 | SIDE INSULATION BLOCK | D |
| 9 | 227008 | BASE INSULATION BLOCK | D |
| 10 | 227010 | FRONT INSULATION BLOCK | D |

| Recommended Parts Level | |
|-------------------------|----------------------------|
| *RPL | Number of units in service |
| A | 1-5 |
| B | 5-10 |
| C | 10-50 |
| D | 50+ |

8.1.3 Gas Assembly



| ITEM | PART NO | DESCRIPTION | *RPL |
|------|---------|--|------|
| 11 | 227011 | SUPPLY PIPE | D |
| 12 | 227289 | SUPPLY TUBE | D |
| | 227559 | OLIVE (VALVE END) | |
| | 227560 | NUT(VALVE END) | |
| 13 | 017800 | GAS CONTROL | A |
| | 017803 | OLIVE (VALVE CONNECTION) | |
| | 017804 | NUT (VALVE CONNECTION) | |
| 14 | 227378 | KNOB BLUE SEAL 8MM GAS PF | C |
| 15 | 227299 | PILOT TUBE | D |
| | 017806 | OLIVE | |
| | 017805 | NUT | |
| 16 | 229511 | INJECTOR ELBOW X 3-8 | D |
| | 015152 | NUT | |
| | 015153 | OLIVE | |
| 17 | 227079 | INJECTOR BRACKET | D |
| 18 | 020628 | TEE 3/8" COMPRESSION BRASS | D |
| | 227292 | TUBE | |
| 19 | 022686 | 6" FLEXITUBE | D |
| 20 | 031170 | INJECTOR 1.70mm - INNER RING (NAT GAS) | C |
| | 031260 | INJECTOR 2.60mm - OUTER RING (NAT GAS) | C |
| | 031110 | INJECTOR 1.10mm - INNER RING (LPG/PROP) | C |
| | 031155 | INJECTOR 1.55mm - OUTER RING (LPG/PROP) | C |
| | 031100 | INJECTOR 1.00mm - INNER RING (BUTANE) | C |
| | 031145 | INJECTOR 1.45mm - OUTER RING (BUTANE) | C |
| | 031420 | INJECTOR 4.20mm - INNER RING (TOWN GAS) | C |
| | 031630 | INJECTOR 6.30mm - OUTER RING (TOWN GAS) | C |
| 21 | 227090 | PILOT MOUNT BRACKET | D |
| 22 | 227089 | BURNER BOX STIFFENER | D |
| 23 | 228853 | BURNER KIT | C |
| 24 | 230511 | PILOT BURNER KIT | B |
| 25 | 230511 | PART OF ITEM 24 ABOVE | D |
| 26 | 227985 | PILOT INJECTOR Ø0.35 (NAT GAS) | C |
| | 227984 | PILOT INJECTOR Ø0.25 (LPG/PROPANE/BUTANE) | C |
| | 232210 | PILOT INJECTOR Ø0.70 (TOWN GAS) | C |
| 27 | 235347 | T/TOP NICKEL PLATED THERMOCOUPLE KIT | B |
| 28 | 228103 | CROSS LIGHTING HOOD BASE | D |
| 29 | 228199 | CROSS LIGHTING HOOD | D |



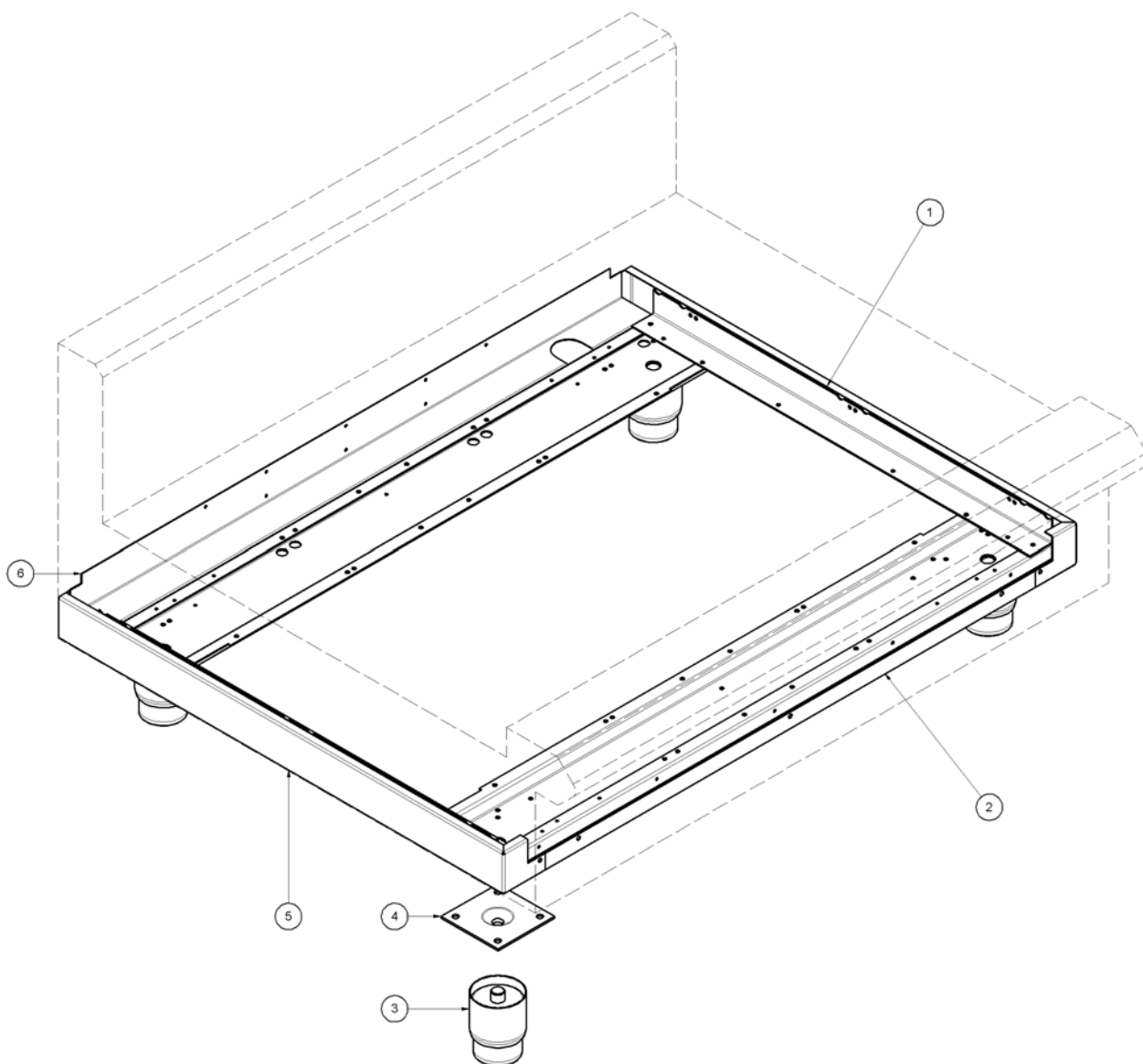
| Recommended Parts Level | |
|-------------------------|----------------------------|
| *R PL | Number of units in service |
| A | 1-5 |
| B | 5-10 |
| C | 10-50 |
| D | 50+ |

228531 REGULATOR (Natural Gas /LPG Gas [Propane-Convertible]3/4"BSP F/F,

8 Exploded Parts Diagrams

8.2 G57 Base Options

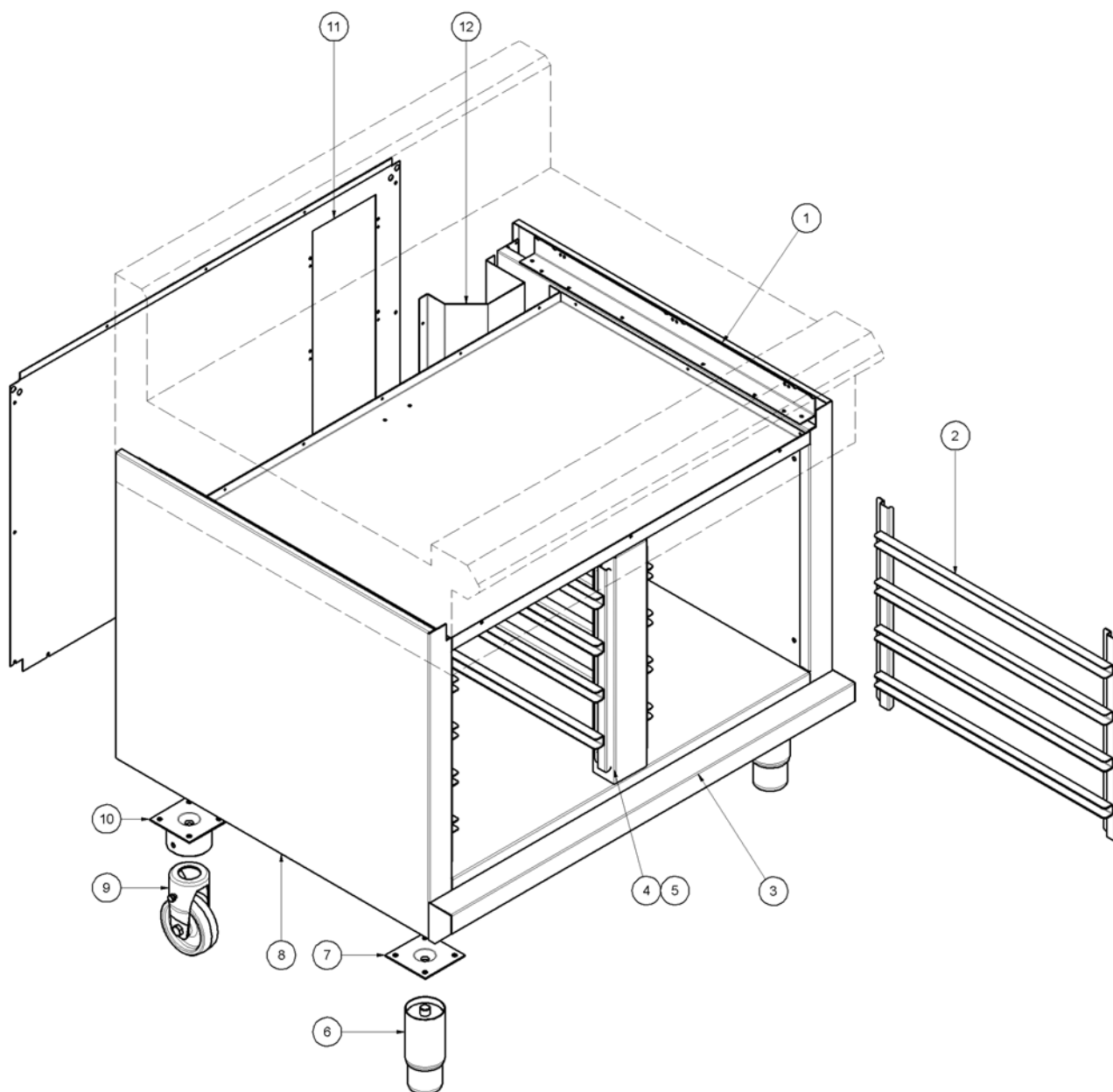
8.2.1 Bench Mount Base



| ITEM | PART NO | DESCRIPTION | *RPL |
|------|---------|------------------------------|------|
| 1 | 230354 | SIDE COVER RH | D |
| 2 | 227120 | TOP TRIM 900mm | D |
| 3 | 227855 | LEG 80MM X Ø63.5 | D |
| 4 | 227852 | LEG PLATE | D |
| 5 | 230355 | SIDE COVER LH | D |
| 6 | 227121 | HOB BACK PANEL SUPPORT 900mm | D |

| Recommended Parts Level | |
|-------------------------|----------------------------|
| *RPL | Number of units in service |
| A | 1-5 |
| B | 5-10 |
| C | 10-50 |
| D | 50+ |

8.2.2 Cabinet Base

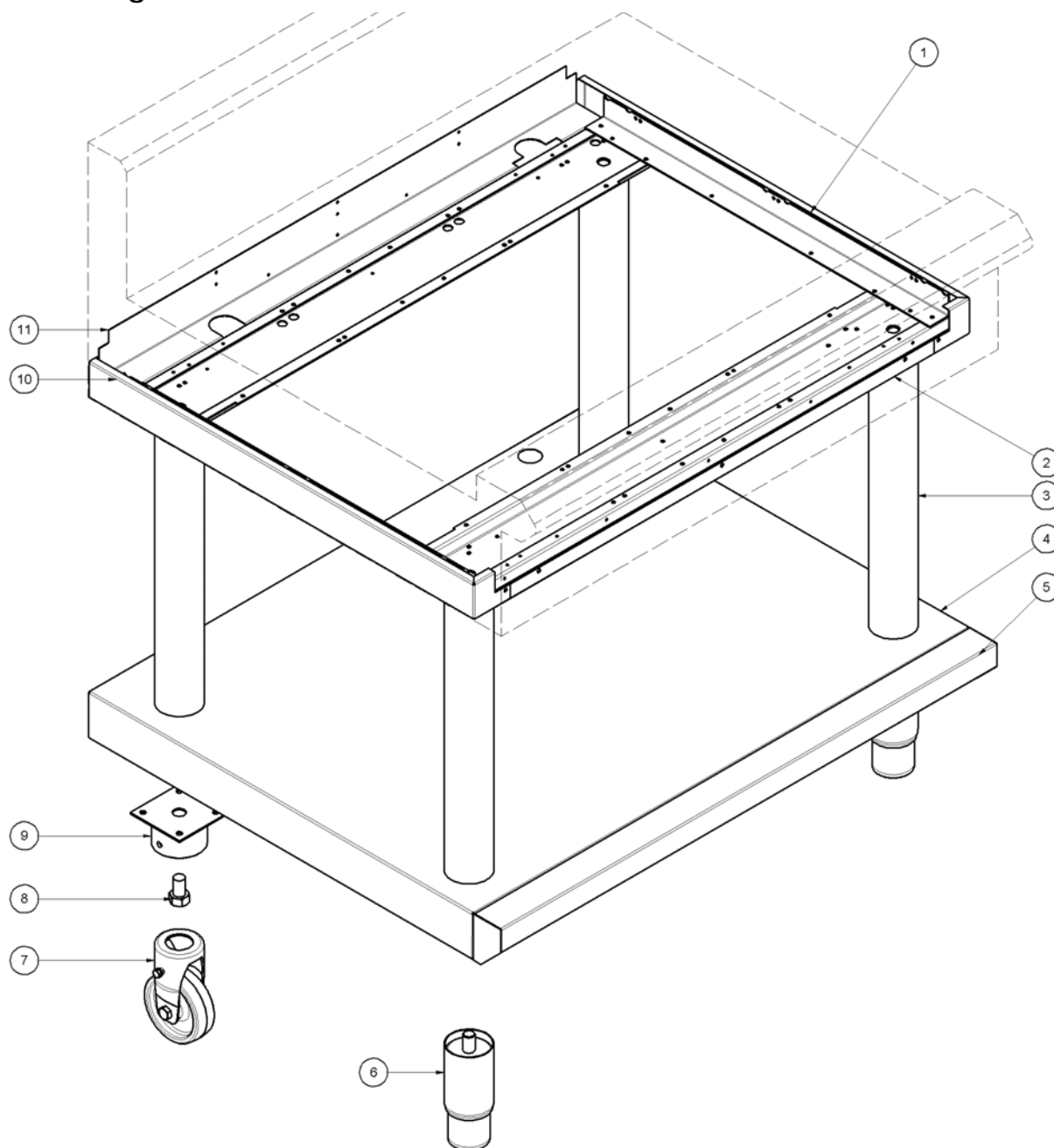


| ITEM | PART NO | DESCRIPTION | *RPL |
|------|---------|-------------------------|------|
| 1 | 227048 | SIDE PANEL RH | D |
| 2 | 228321 | SIDE RACK WA | D |
| 3 | 227901 | SILL 900MM WA | D |
| 4 | 227789 | FILLER | D |
| 5 | 227787 | CENTRE SUPPORT | D |
| 6 | 227850 | LEG 150MM X Ø63.5 | D |
| 7 | 227852 | LEG PLATE | D |
| 8 | 227049 | SIDE PANEL LH | D |
| 9 | 229674 | REAR ROLLER ASSEMBLY | D |
| 10 | 229671 | LEG RING PLATE THREADED | D |
| 11 | 227104 | BACK PANEL | D |
| 12 | 228935 | GAS HOUSING | D |
| 13 | 235490 | CABINET BASE KIT 900MM | D |

| Recommended Parts Level | |
|-------------------------|----------------------------|
| *RPL | Number of units in service |
| A | 1-5 |
| B | 5-10 |
| C | 10-50 |
| D | 50+ |

8 Exploded Parts Diagrams

8.2.3 Leg Base



| ITEM | PART NO | DESCRIPTION | *RPL |
|------|---------|--------------------------------------|------|
| 1 | 230354 | SIDE COVER RH | D |
| 2 | 227120 | TOP TRIM | D |
| 3 | 227853 | LEG EXTENSION 530 X Ø63.5 | D |
| 4 | 227407 | BASE TRAY | D |
| 5 | 227901 | SILL 900MM WA | D |
| 6 | 227851 | LEG 150MM X Ø63.5 EXTD THEARD | D |
| 7 | 229674 | REAR ROLLER ASSEMBLY | D |
| 8 | 748010 | SCREW 5/8"X1 HEX SET ZP | D |
| 9 | 229673 | LEG RING PLATE PLAIN | D |
| 10 | 230355 | SIDE COVER LH | D |
| 11 | 228312 | HOB BACK PANEL SUPPORT | D |
| | 231451 | BENCH TO LEG STAND KIT 900mm | D |
| | 235342 | CAB/FRIG BASE TO LEG STAND KIT 900MM | D |

| Recommended Parts Level | |
|-------------------------|----------------------------|
| *RPL | Number of units in service |
| A | 1-5 |
| B | 5-10 |
| C | 10-50 |
| D | 50+ |