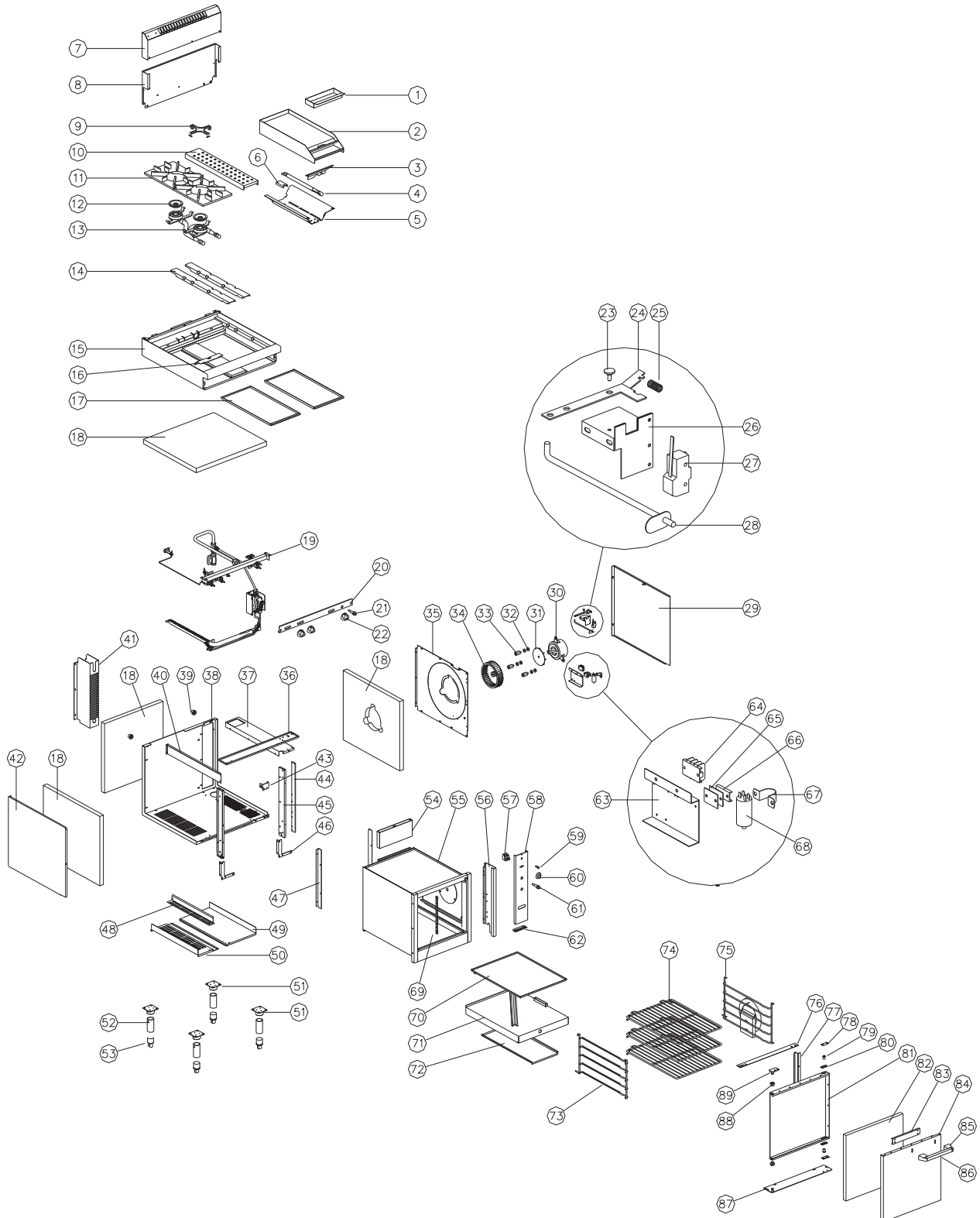

10. RN8410GC PARTS DIAGRAMS

SECTION	PAGE NO.
10.1 RN8410GC MAIN ASSEMBLY	45
10.1.1 Main Assembly - From S/N 224660	45
10.1.2 Main Assembly - To S/N 224659	48
10.2 RN8410GC GAS PIPING ASSEMBLY (STANDARD).....	51
10.2.1 Gas Piping Assembly (Standard) - From S/N 224660	51
10.2.2 Gas Piping Assembly (Standard) - From S/N 31201 to S/N 224659	53
10.2.3 Gas Piping Assembly (Standard) - To S/N 31200	56
10.3 RN8410GC GAS PIPING ASSEMBLY (FFP)	58
10.3.1 Gas Piping Assembly (FFP) - From S/N 224660	58
10.3.2 Gas Piping Assembly (FFP) - From S/N 31201 to S/N 224659	61
10.3.3 Gas Piping Assembly (FFP) - To S/N 31200	64

10.1 RN8410GC MAIN ASSEMBLY

10.1.1 RN8410GC Main Assembly - From S/N 224660



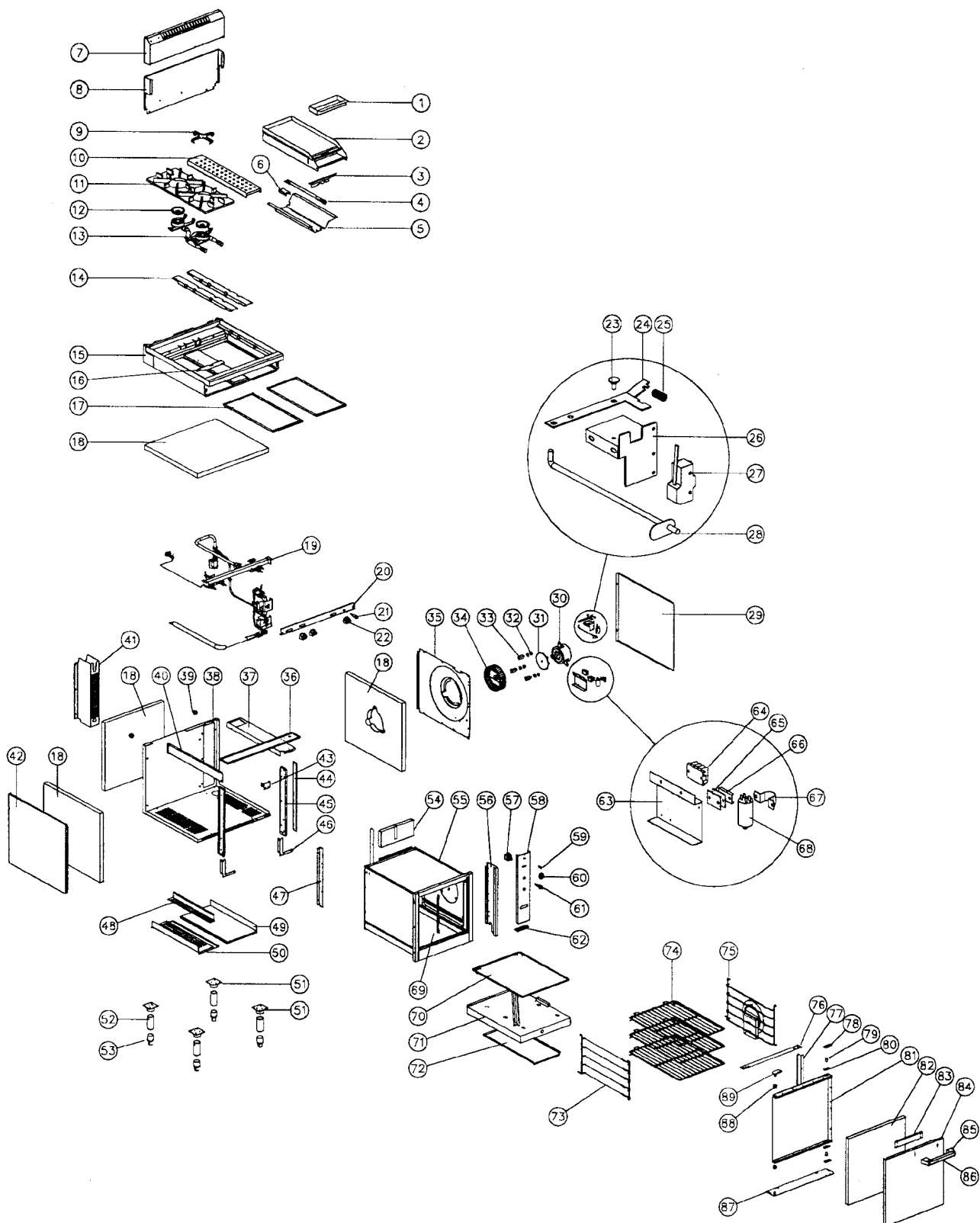
Pos	Part No	Description
1	016511	TROUGH TRAY
2	016385	GRIDDLE (300 mm)
3	017609	HEAT SHIELD
4	014105	GRIDDLE BURNER
5	019431	GRIDDLE REFLECTOR
6	014106	GRIDDLE BURNER BRACKET
7	015543	SPLASHBACK
8	012848	HOB BACK PANEL
9	016659	POT STAND SPIDER
10	004211	POT SUPPORT SPACER
11	004125	POT STAND
12	004078	BURNER CAP
13	004079	OPEN BURNER ASSEMBLY - FRONT
	004080	OPEN BURNER ASSEMBLY - REAR
14	015439	POT SUPPORT
15	016254	HOB
16	017609	HEAT SHIELD (-FFP UNITS ONLY)
17	004158	HOB TRAY
18	090415	INSULATION
19	-----	GAS CONTROL ASSEMBLY (SEE SECTION 10.2 & 10.3)
20	004757	HOB CONTROL PANEL RN8413GC (from S/N 30484)
	004758	HOB CONTROL PANEL RN8410GC (from S/N 30484)
	004494	HOB CONTROL PANEL RN8413GC -FFP
	004493	HOB CONTROL PANEL RN8410GC -FFP
21	020119	PIEZO IGNITOR
22	014451	KNOB ASSEMBLY - FRONT
	014452	KNOB ASSEMBLY - REAR
	014453	KNOB ASSEMBLY - PLATE
23	003396	PIVOT PIN
24	012362	LEVER ARM
25	014397	MICROSWITCH SPRING
26	012335	MICROSWITCH BRACKET
27	017928	MICROSWITCH
28	019484	MICROSWITCH ROD
29	015045	SIDE PANEL - R.H
30	019479K	FAN MOTOR KIT (INCLUDES ITEMS 31,30)
31	010866	COOLING DISC
32	010859	RUBBER BUSHES
33	013627	MOUNTING SPACER
34	010856	FAN WHEEL
35	015043	SIDE INSULATION PANEL
36	012365	TOP FRONT HORIZONTAL
37	012368	TOP PANEL - R.H
38	012363	BODY
39	014157	SPACER
40	012369	TOP PANEL - L.H
41	014798	GAS HOUSING
42	012374	SIDE PANEL - L.H
43	012423	INJECTOR SUPPORT BRACKET
44	012366	UPRIGHT - R.H
45	012367	DOOR UPRIGHT
46	012370	OVEN BRACE
47	012408	OVEN SECURING BRACKET
48	012607	BURNER SHIELD
49	012412	INSULATION TRAY
50	012411	BOTTOM BAFFLE
51	004634	LEG SUPPORT

52	014873	LEG TUBE - ADJUSTABLE
	014872	ADJUSTABLE LEG ASSEMBLY (52 & 53 ASSEMBLED)
53	010990	ADJUSTABLE FOOT
54	012233	VENT
55	004337	OVEN
56	012373	SPACER PANEL
57	011987	THERMOSTAT
58	004246	CONTROL PANEL
59	013528	PILOT LIGHT
60	015563	KNOB
61	020119	PIEZO IGNITOR
62	004144	HINGE
63	012077	TERMINAL BLOCK BRACKET
64	013586	TERMINAL BLOCK
65	002441	CABLE INSULATOR
66	002138	CABLE CLAMP
67	010023	SADDLE CLAMP
68	010909	CAPACITOR
69	017961	PHIAL GUARD
70	004140	BAFFLE TRAY
71	004142	BURNER BOX
72	011509	FLAME BAFFLE
73	011514	RACK SUPPORT - LH
74	012424	OVEN RACK
75	012610	RACK SUPPORT - R.H
76	012372	OVEN TOP TRIM
77	012371	OVEN TRIM - RH
78	010254	STRIKER PLATE
79	011005	BALL CATCH & LOCKNUT
80	018789	BALL CATCH PLATE
81	004263	DOOR INNER
82	090415	INSULATION
83	018138	HANDLE STIFFENER
84	012406	DOOR OUTER
85	014346	HANDLE END CAP
86	015545	DOOR HANDLE
87	013656	DOOR SUPPORT PLATE
88	013655	DOOR BUSH
89	013654	TOP HINGE PLATE

GAS TYPE CONVERSION KITS

Model	Serial Numbers		Country	Conversion Kit		
	From	To		→ LPG	→ Butane	→ Natural
RN8413GC	31290	→	Australia only	22921	Use NZ LPG kit	22931
			NZ / Other countries	26244		
	←	31289		16764 & 12448	On request	16752 & 12503
RN8410GC	31290	→	Australia only	22922	Use NZ LPG kit	22932
			NZ / Other countries	26245		
	←	31289		16765 & 12448	On request	16753 & 12503

10.1.2 RN8410GC Main Assembly - To S/N 224659



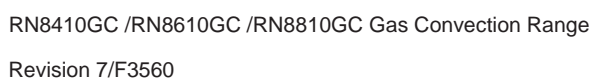
Pos	Part No	Description
1	016511	TROUGH TRAY
2	016385	GRIDDLE (300 mm)
3	017609	HEAT SHIELD
4	014105	GRIDDLE BURNER
5	019431	GRIDDLE REFLECTOR
6	014106	GRIDDLE BURNER BRACKET
7	015543	SPLASHBACK
8	012848	HOB BACK PANEL
9	016659	POT STAND SPIDER
10	004211	POT SUPPORT SPACER
11	004125	POT STAND
12	004078	BURNER CAP
13	004079	OPEN BURNER ASSEMBLY - FRONT
	004080	OPEN BURNER ASSEMBLY - REAR
14	015439	POT SUPPORT
15	016254	HOB
16	017609	HEAT SHIELD (-FFP UNITS ONLY)
17	004158	HOB TRAY
18	090415	INSULATION
19	-----	GAS CONTROL ASSEMBLY (SEE SECTION 10.2 & 10.3)
20	004420	HOB CONTROL PANEL RN8413GC (to S/N 30484)
	004757	HOB CONTROL PANEL RN8413GC (from S/N 30484)
	004421	HOB CONTROL PANEL RN8410GC (to S/N 30484)
	004758	HOB CONTROL PANEL RN8410GC (from S/N 30484)
	004494	HOB CONTROL PANEL RN8413GC -FFP
	004493	HOB CONTROL PANEL RN8410GC -FFP
21	020119	PIEZO IGNITOR
22	014451	KNOB ASSEMBLY - FRONT
	014452	KNOB ASSEMBLY - REAR
	014453	KNOB ASSEMBLY - PLATE
23	003396	PIVOT PIN
24	012362	LEVER ARM
25	014397	MICROSWITCH SPRING
26	012335	MICROSWITCH BRACKET
27	017928	MICROSWITCH
28	019484	MICROSWITCH ROD
29	015045	SIDE PANEL - R.H
30	019479K	FAN MOTOR KIT (INCLUDES ITEMS 31,32)
31	010866	COOLING DISC
32	010859	RUBBER BUSHES
33	013627	MOUNTING SPACER
34	010856	FAN WHEEL
35	015043	SIDE INSULATION PANEL
36	012365	TOP FRONT HORIZONTAL
37	012368	TOP PANEL - R.H
38	012363	BODY
39	014157	SPACER
40	012369	TOP PANEL - L.H
41	014798	GAS HOUSING
42	012374	SIDE PANEL - L.H
43	012423	INJECTOR SUPPORT BRACKET
44	012366	UPRIGHT - R.H
45	012367	DOOR UPRIGHT
46	012370	OVEN BRACE
47	012408	OVEN SECURING BRACKET
48	012607	BURNER SHIELD
49	012412	INSULATION TRAY
50	012411	BOTTOM BAFFLE

51	004634	LEG SUPPORT
52	014873	LEG TUBE - ADJUSTABLE
	014872	ADJUSTABLE LEG ASSEMBLY (52 & 53 ASSEMBLED)
53	010990	ADJUSTABLE FOOT
54	012233	VENT
55	004337	OVEN
56	012373	SPACER PANEL
57	011987	THERMOSTAT
58	004246	CONTROL PANEL
59	013528	PILOT LIGHT
60	015563	KNOB
61	020119	PIEZO IGNITOR
62	004144	HINGE
63	012077	TERMINAL BLOCK BRACKET
64	013586	TERMINAL BLOCK
65	002441	CABLE INSULATOR
66	002138	CABLE CLAMP
67	010023	SADDLE CLAMP
68	010909	CAPACITOR
69	017961	PHIAL GUARD
70	004140	BAFFLE TRAY
71	004142	BURNER BOX
72	011509	FLAME BAFFLE
73	011514	RACK SUPPORT - LH
74	012424	OVEN RACK
75	012610	RACK SUPPORT - R.H
76	012372	OVEN TOP TRIM
77	012371	OVEN TRIM - RH
78	010254	STRIKER PLATE
79	011005	BALL CATCH & LOCKNUT
80	018789	BALL CATCH PLATE
81	004263	DOOR INNER
82	090415	INSULATION
83	018138	HANDLE STIFFENER
84	012406	DOOR OUTER
85	014346	HANDLE END CAP
86	015545	DOOR HANDLE
87	013656	DOOR SUPPORT PLATE
88	013655	DOOR BUSH
89	013654	TOP HINGE PLATE

GAS TYPE CONVERSION KITS

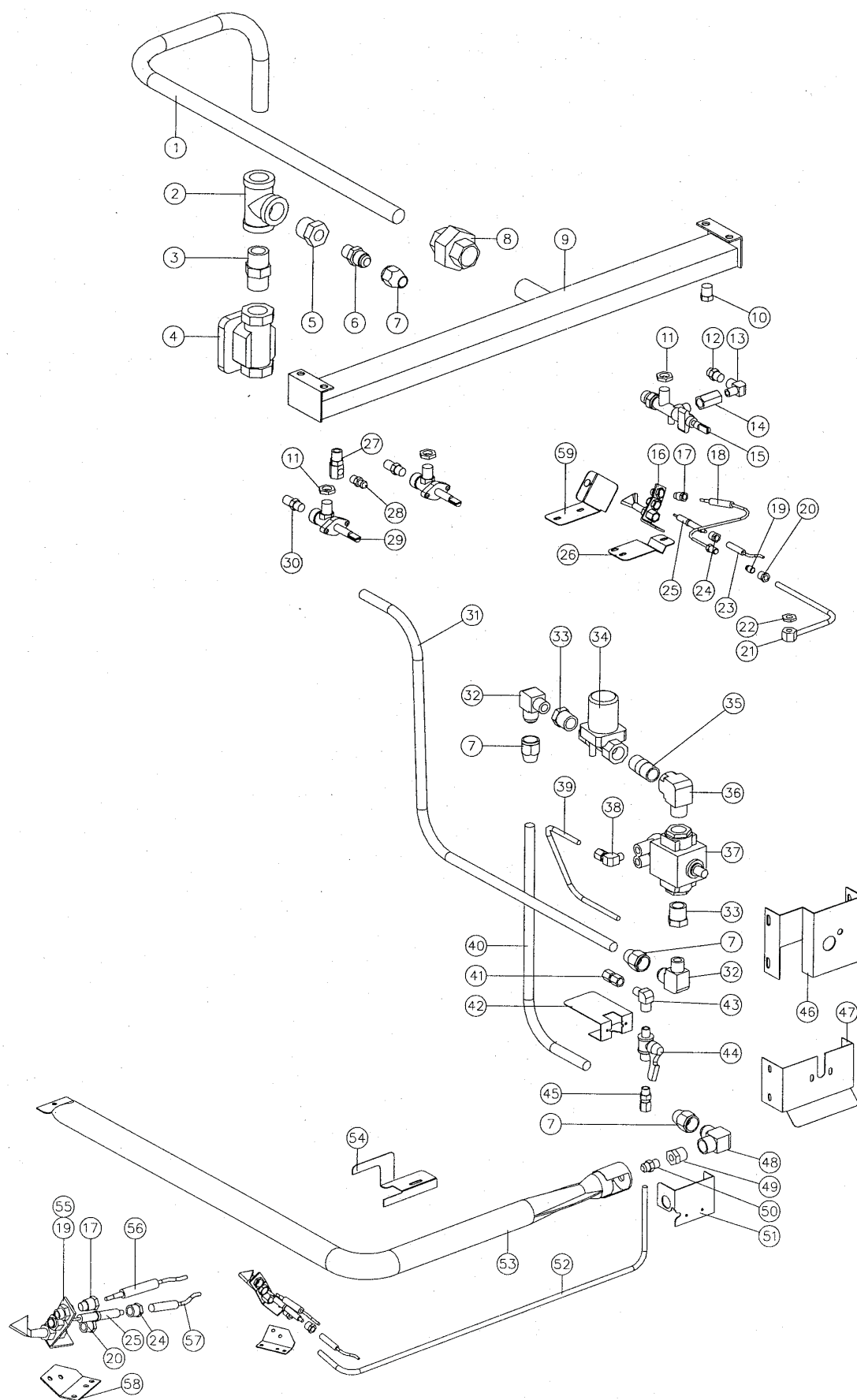
Model	Serial Numbers		Country	Conversion Kit		
	From	To		→ LPG	→ Butane	→ Natural
RN8413GC	31290	→	Australia only	22921	Use NZ LPG kit	22931
			NZ / Other countries	26244		
	←	31289		16764 & 12448	On request	16752 & 12503
RN8410GC	31290	→	Australia only	22922	Use NZ LPG kit	22932
			NZ / Other countries	26245		
	←	31289		16765 & 12448	On request	16753 & 12503

10.2.1 RN8410GC Gas Piping Assembly (Std) - From S/N 224660



Pos	Part No	Description
1	014803	HOB SUPPLY PIPE
2	011833	TEE - 3/4"
3	013473	NIPPLE
4	011853	REGULATOR (NATURAL GAS ONLY)
5	012048	REDUCING BUSH - 3/8" x 3/4"
8	011827	MACK UNION
9	004146	MANIFOLD RN8410GC
10	011148	PLUG - 1/4"
11	013215	BACKNUT - 1/4" BSP
12	032130	GRIDDLE INJECTOR Ø1.30 mm - LPG
	032210	GRIDDLE INJECTOR Ø2.10 mm - NATURAL GAS
13	011634	PILOT ELBOW (UP TO S/N 278399) (NOT AVAILABLE REFER ITEM 15, 016518)
	026022	PILOT ELBOW (FROM S/N 278400) (NOT AVAILABLE REFER ITEM 15, 016518)
14	012918	OUTLET CONNECTOR (NOT AVAILABLE REFER ITEM 15, 016518)
15	016518	GRIDDLE TAP ASSEMBLY (INCLUDES ITEMS 11,13,14,22)
16	019215K	GRIDDLE PILOT BURNER KIT (INCLUDES ITEMS 17,19,20,24,25)
17	018741	CLAMP NUT
18	019428	THERMOCOUPLE - GRIDDLE
	019575	M10 THERMOCOUPLE SPLIT NUT
19	018692	PILOT INJECTOR Ø0.20mm - LP GAS
	018693	PILOT INJECTOR Ø0.32mm - NATURAL GAS
20	018740	COMPRESSION NUT 1/4"
	018739	OLIVE
21	020656	GRIDDLE PILOT SUPPLY TUBE
22	012919	BACKNUT
23	018095	HIGH TENSION LEAD
24	018742	ELECTRODE NUT
25	018744	PILOT ELECTRODE
26	019425	GRIDDLE PILOT BRACKET
27	011741	PRESSURE ADAPTOR
28	019371	PRESSURE TEST POINT
29	020639	GAS TAP
30	034130	OPEN BURNER INJECTOR Ø1.30 mm - LPG
	034210	OPEN BURNER INJECTOR Ø2.10 mm - NATURAL GAS
31	013837	CONNECTOR
32	024136	CONTROL SUPPLY PIPE
33	024133	CONTROL MOUNTING BRACKET
34	020064	GAS VALVE BRACKET
35	014408	CONNECTOR
36	020103K	GAS CONTROL KIT (INCLUDES ITEM 56)
37	022689	INJECTOR CONNECTOR
38	022686	1/4" SS FLEXI PIPE
39	021288	CONNECTOR
40	024142	ELBOW – 3/8" BSP FF
41	011601	REDUCING BUSH
42	032150	OVEN INJECTOR Ø1.50mm - LPG
	032250	OVEN INJECTOR Ø2.50mm - NATURAL GAS
43	012248	OVEN BURNER
44	022248	BURNER RETAINING BRACKET
45	024137	PILOT SUPPLY TUBE
46	012753	CONNECTOR – 1/8" x 1/4"
47	018691K	OVEN PILOT BURNER KIT (INCLUDES ITEMS 20,48,49,52,53)
48	018692	PILOT INJECTOR Ø0.20mm - LPG
	018693	PILOT INJECTOR Ø0.32mm - NATURAL GAS
49	018741	CLAMP NUT
50	020253	THERMOCOUPLE – 1200mm
51	024267	OVEN PILOT BRACKET
52	018744	PILOT ELECTRODE
53	018742	ELECTRODE NUT
54	019407	HIGH TENSION LEAD
55	023863	GRIDDLE PILOT DRAFT BAFFLE

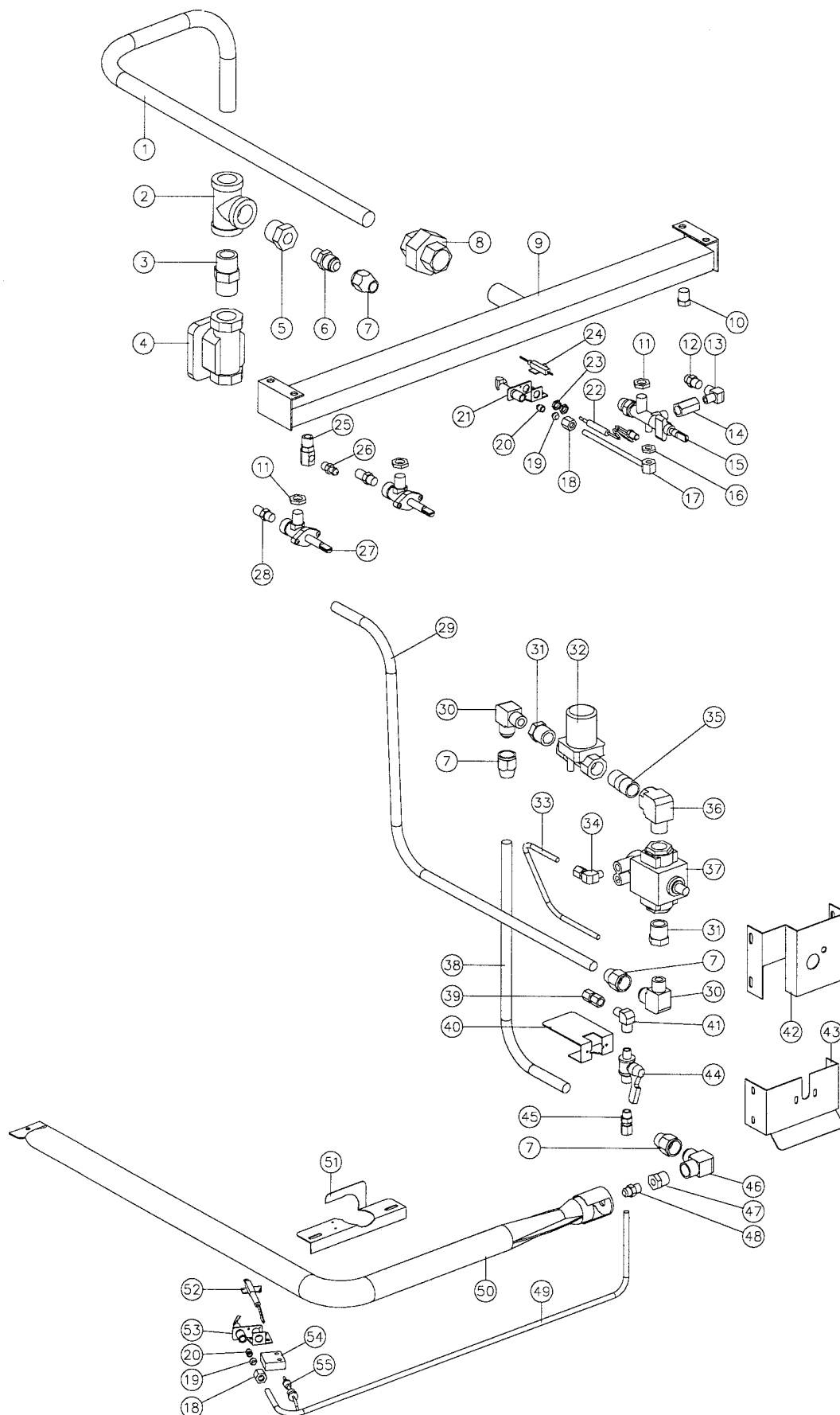
10.2.2 RN8410GC Gas Piping Assembly (Std) - From S/N 31201 to 224659



Pos	Part No	Description
1	014803	HOB SUPPLY PIPE
2	011833	TEE - 3/4"
3	013473	NIPPLE
4	011853	REGULATOR (NATURAL GAS ONLY)
5	012048	REDUCING BUSH - 3/8" x 3/4"
6	011003	CONNECTOR - 1/2" x 3/8"
7	011002	CONE NUT
8	011827	MACK UNION
9	004146	MANIFOLD
10	011148	PLUG - 1/4"
11	013215	BACKNUT - 1/4" BSP
12	032130	GRIDDLE INJECTOR Ø1.30 mm - LPG
	032210	GRIDDLE INJECTOR Ø2.10 mm - NATURAL GAS
13	011634	ELBOW PILOT (UP TO S/N 278399) (NOT AVAILABLE REFER ITEM 15, 016518)
	026022	PILOT ELBOW (FROM S/N 278400) (NOT AVAILABLE REFER ITEM 15, 016518)
14	012918	OUTLET CONNECTOR (NOT AVAILABLE REFER ITEM 15, 016518)
15	016518	GRIDDLE TAP ASSEMBLY (INCLUDES ITEMS 11,13,14,22)
16	019215K	GRIDDLE PILOT BURNER KIT (INCLUDES ITEMS 17,19,20,24,25)
17	018741	CLAMP NUT
18	019428	THERMOCOUPLE - GRIDDLE
	019575	M10 THERMOCOUPLE SPLIT NUT
19	018692	PILOT INJECTOR Ø0.20mm - LP GAS
	018693	PILOT INJECTOR Ø0.32mm - NATURAL GAS
20	018740	COMPRESSION NUT 1/4"
	018739	OLIVE
21	020656	GRIDDLE PILOT SUPPLY TUBE
22	012919	BACKNUT
23	018095	HIGH TENSION LEAD
24	018742	ELECTRODE NUT
25	018744	PILOT ELECTRODE
26	019425	GRIDDLE PILOT BRACKET
27	011741	PRESSURE ADAPTOR
28	019371	PRESSURE TEST POINT
29	020639	GAS TAP
30	034130	OPEN BURNER INJECTOR Ø1.30 mm - LPG
	034210	OPEN BURNER INJECTOR Ø2.10 mm - NATURAL GAS
31	014801	CONTROL SUPPLY PIPE
32	011747	ELBOW - 3/8" x 1/2"
33	011656	REDUCING BUSH - 3/8" x 1/2"
34	019454	SOLENOID VALVE
35	013235	NIPPLE - 1/2"
36	018350	ELBOW - 1/2"
37	013153	FLAME FAILURE CONTROL
38	013836	ELBOW - 1/8" X 1/4"
39	013190	PILOT SUPPLY TUBE
40	012250	OVEN SUPPLY TUBE
41	011742	CONNECTOR - 1/8" x 1/4"
42	013184	CLAMP BRACKET
43	011634	ELBOW - 1/8"
44	013155	BALL VALVE
45	012753	CONNECTOR - 1/8" x 1/4"
46	013182	SAFETY MOUNTING BRACKET
47	013183	BALL VALVE MOUNTING BRACKET
48	011600	ELBOW - 3/8" x 1/2"

49	011601	REDUCING BUSH - 3/8" x 1/8"
50	032150	OVEN INJECTOR Ø1.50mm - LPG
	032230	OVEN INJECTOR Ø2.30mm - NATURAL GAS
51	012423	INJECTOR SUPPORT BRACKET
52	019445	OVEN PILOT SUPPLY TUBE
53	012248	OVEN BURNER
54	022248	BURNER RETAINING BRACKET
55	018691K	OVEN PILOT BURNER KIT (INCLUDES ITEMS 17,19,20,24,25)
56	020253	THERMOCOUPLE- 1200mm
57	019407	HIGH TENSION LEAD
58	019330	OVEN PILOT BRACKET
59	023863	GRIDDLE PILOT DRAFT BAFFLE (FROM S/N 215176)

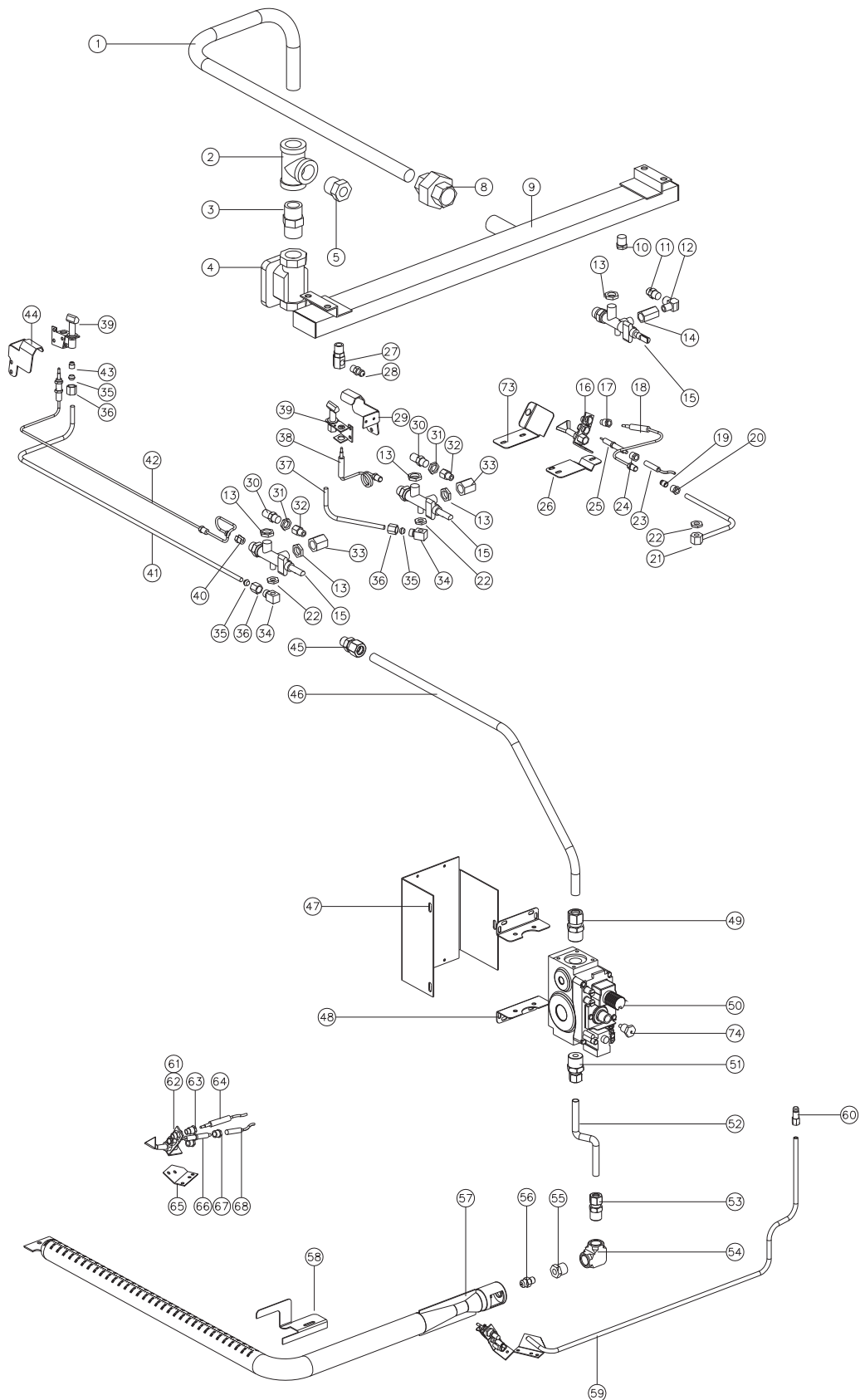
10.2.3 RN8410GC Gas Piping Assembly (Std) - To S/N 31200



Pos	Part No	Description
1	014803	HOB SUPPLY PIPE
2	011833	TEE - 3/4"
3	013473	NIPPLE
4	011853	REGULATOR (NATURAL GAS ONLY)
5	012048	REDUCING BUSH - 3/8" x 3/4"
6	011003	CONNECTOR - 1/2" x 3/8"
7	011002	CONE NUT
8	011827	MACK UNION
9	004146	MANIFOLD
10	011148	PLUG - 1/4"
11	013215	BACKNUT - 1/4" BSP
12	032130	GRIDDLE INJECTOR Ø1.30 mm - LPG
	032210	GRIDDLE INJECTOR Ø2.10 mm - NATURAL GAS
13	011634	PILOT ELBOW (UP TO S/N 278399) (NOT AVAILABLE REFER ITEM 15, 016518)
	026022	PILOT ELBOW (FROM S/N 278400) (NOT AVAILABLE REFER ITEM 15, 016518)
14	012918	OUTLET CONNECTOR (NOT AVAILABLE REFER ITEM 15, 016518)
15	016518	GRIDDLE TAP ASSY (ASSEMBLED WITH ITEMS 11,13,14,16)
16	012919	BACKNUT- 5/16" UNF
17	012921	PILOT TUBE ASSEMBLY
18	011287	NUT (PART OF ITEM 21)
19	011286	OLIVE (PART OF ITEM 21)
20	011650	PILOT SPUD - LPG
	011651	PILOT SPUD - NATURAL
21	012699K	GRIDDLE PILOT BURNER KIT (ASSEMBLED WITH ITEMS 18,19,20)
22	012916	THERMOCOUPLE - 300 mm
23	-----	THERMOCOUPLE NUTS (PART OF ITEM 22)
24	013801	PIEZO ELECTRODE
25	011741	PRESSURE ADAPTOR
26	011337	PRESSURE TEST POINT
27	020639	GAS TAP
28	034130	OPEN BURNER INJECTOR Ø1.30 mm - LPG
	034210	OPEN BURNER INJECTOR Ø2.10 mm - NATURAL GAS
29	014801	CONTROL SUPPLY PIPE
30	011747	ELBOW - 3/8" x 1/2"
31	011656	REDUCING BUSH - 3/8" x 1/2"
32	019454	SOLENOID VALVE
33	013190	PILOT SUPPLY TUBE
34	013836	ELBOW - 1/8" X 1/4"
35	013235	NIPPLE - 1/2"
36	018350	ELBOW - 1/2"
37	013153	FLAME FAILURE CONTROL
38	012250	OVEN SUPPLY TUBE
39	011742	CONNECTOR - 1/8" x 1/4"
40	013184	CLAMP BRACKET
41	011634	ELBOW - 1/8"
42	013182	SAFETY MOUNTING BRACKET
43	013183	BALL VALVE MOUNTING BRACKET
44	013155	BALL VALVE
45	012753	CONNECTOR - 1/8" x 1/4"
46	011600	ELBOW - 3/8" x 1/2"
47	011601	REDUCING BUSH - 3/8" x 1/8"
48	032150	OVEN INJECTOR Ø1.50mm - LPG
	032230	OVEN INJECTOR Ø2.30mm - NATURAL GAS
49	013263	OVEN PILOT SUPPLY TUBE
50	012248	OVEN BURNER
51	012608	PILOT BRACKET
52	018347	IGNITOR ELECTRODE - OVEN
	018252	ELECTRODE / HT LEAD ASSEMBLY (NOT ILLUSTRATED)
53	012331K	OVEN PILOT BURNER KIT (USES ITEM 20 PILOT SPUDS)
54	004154	PILOT SPACER
55	011771	THERMOCOUPLE

10.3 RN8410GC GAS PIPING ASSEMBLY (FFP)

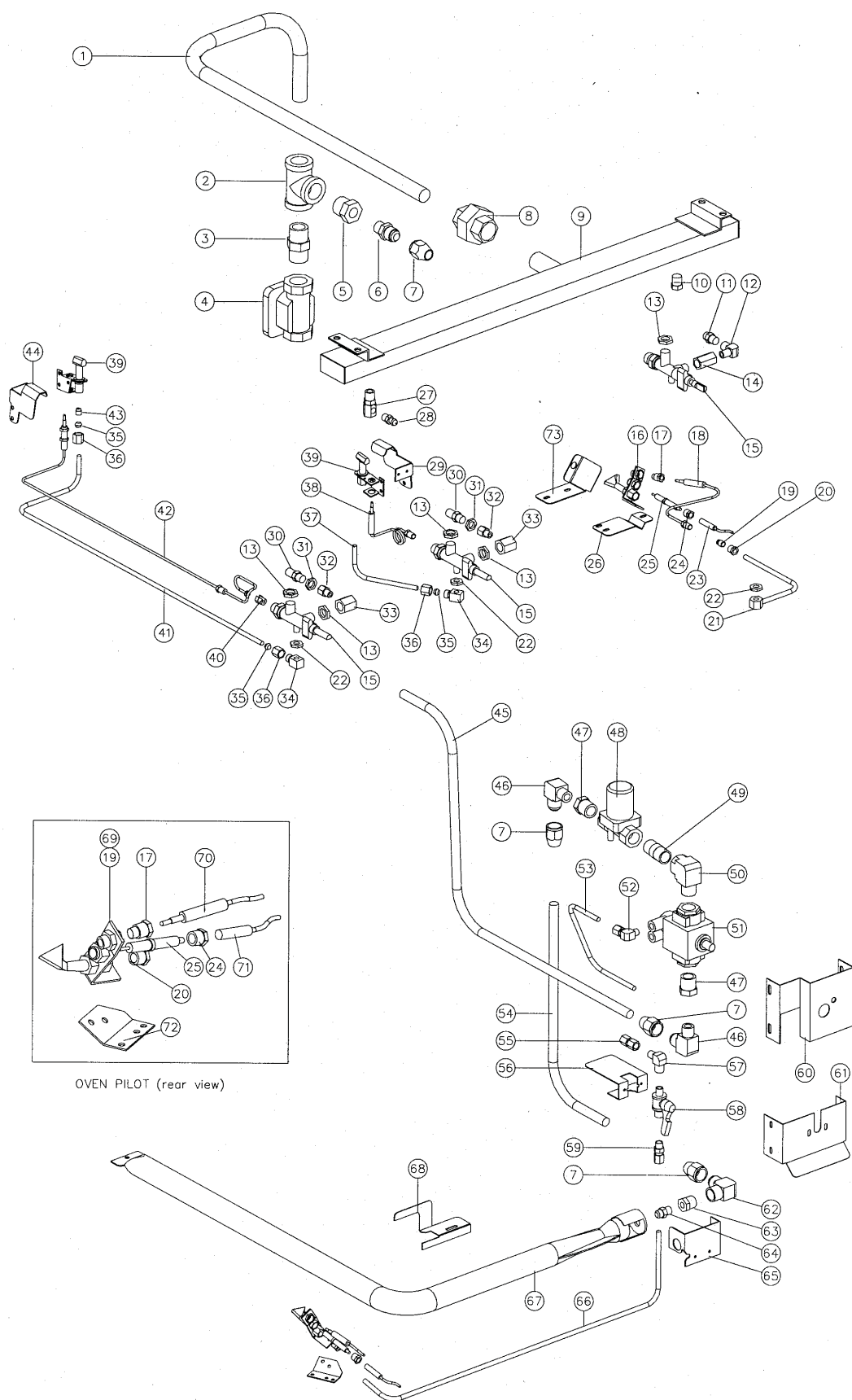
10.3.1 RN8410GC Gas Piping Assembly (FFP) - From S/N 224660



Pos	Part No	Description
1	014803	HOB SUPPLY PIPE
2	011833	TEE - 3/4"
3	013473	NIPPLE
4	011853	REGULATOR (NATURAL GAS ONLY)
5	012048	REDUCING BUSH - 3/8" x 3/4"
8	011827	MACK UNION
9	004146	MANIFOLD RN8410GC
10	011148	PLUG - 1/4"
11	013215	BACKNUT - 1/4" BSP
12	032130	GRIDDLE INJECTOR Ø1.30 mm - LPG
	032210	GRIDDLE INJECTOR Ø2.10 mm - NATURAL GAS
13	011634	PILOT ELBOW (UP TO S/N 278399) (NOT AVAILABLE REFER ITEM 15, 016518)
	026022	PILOT ELBOW (FROM S/N 278400) (NOT AVAILABLE REFER ITEM 15, 016518)
14	012918	OUTLET CONNECTOR (NOT AVAILABLE REFER ITEM 15, 016518)
15	016518	GRIDDLE TAP ASSEMBLY (INCLUDES ITEMS 11,13,14,22)
	017611	OPEN BURNER TAP ASSEMBLY (INCLUDES ITEMS 11,22,33)
16	019215K	GRIDDLE PILOT BURNER KIT (INCLUDES ITEMS 17,19,20,24,25)
17	018741	CLAMP NUT
18	019428	THERMOCOUPLE - GRIDDLE
	019575	M10 THERMOCOUPLE SPLIT NUT
19	018692	PILOT INJECTOR Ø0.20mm - LP GAS
	018693	PILOT INJECTOR Ø0.32mm - NATURAL GAS
20	018740	COMPRESSION NUT 1/4"
	018739	OLIVE
21	020656	GRIDDLE PILOT SUPPLY TUBE
22	012919	BACKNUT
23	018095	HIGH TENSION LEAD
24	018742	ELECTRODE NUT
25	018744	PILOT ELECTRODE
26	019425	GRIDDLE PILOT BRACKET
27	011741	PRESSURE ADAPTOR
28	019371	PRESSURE TEST POINT
29	017607	PILOT SHROUD - FRONT
30	034130	OPEN BURNER INJECTOR Ø1.30 mm - LPG
	034210	OPEN BURNER INJECTOR Ø2.10 mm - NATURAL GAS
31	011740	JET BACKNUT (UP TO S/N 246144)
32	017613	ADAPTOR - 1/8" BSP M/F (NOT AVAILABLE, REFER TO ITEM 15, 017611)
33	017612	INJECTOR ELBOW (UP TO S/N 278399) (NOT AVAILABLE, REFER TO ITEM 15, 017611)
	026023	INJECTOR ELBOW (FROM S/N 278400) (NOT AVAILABLE, REFER TO ITEM 15, 017611)
34	017079	PILOT OUTLET FITTING
35	011286	OLIVE
36	011287	NUT
37	017614	PILOT TUBE FRONT
38	012916	THERMOCOUPLE - 300 mm
	024573	THERMOCOUPLE LOCK-NUT (NOT ILLUSTRATED)
39	013000K	PILOT BURNER KIT (INCLUDES ITEM 43)
40	019575	THERMOCOUPLE SPLIT NUT
41	017615	PILOT TUBE REAR
42	017617	THERMOCOUPLE - 750 mm
	024573	THERMOCOUPLE LOCK-NUT (NOT ILLUSTRATED)
43	011650	PILOT SPUD - LPG
	011651	PILOT SPUD - NATURAL
44	017608	PILOT SHROUD - REAR
45	013837	CONNECTOR

46	024136	CONTROL SUPPLY PIPE
47	024133	CONTROL MOUNTING BRACKET
48	020064	GAS VALVE BRACKET
49	014408	CONNECTOR
50	020103K	GAS CONTROL KIT (INCLUDES ITEM 74)
51	022689	INJECTOR CONNECTOR
52	022686	¼" SS FLEXI PIPE
53	021288	CONNECTOR
54	024142	ELBOW – 3/8" BSP FF
55	011601	REDUCING BUSH
56	032150	OVEN INJECTOR Ø1.50 mm - LPG
	032250	OVEN INJECTOR Ø2.50 mm - NAT
57	012248	OVEN BURNER
58	022248	BURNER RETAINING BRACKET
59	024137	PILOT SUPPLY TUBE
60	012753	CONNECTOR – 1/8" x 1/4"
61	018691K	OVEN PILOT BURNER KIT (INCLUDES ITEMS 20,62,63,66,67)
62	018692	PILOT INJECTOR Ø0.20 mm - LPG
	018693	OVEN INJECTOR Ø0.32 mm – NAT
63	018741	CLAMP NUT
64	020253	THERMOCOUPLE – 1200mm
65	024267	OVEN PILOT BRACKET
66	018744	PILOT ELECTRODE
67	018742	ELECTRODE NUT
68	019407	HIGH TENSION LEAD
73	023863	GRIDDLE PILOT DRAFT BAFFLE
74	018096	REGULATOR KNOCK-OUT PIN (ALL GASES)

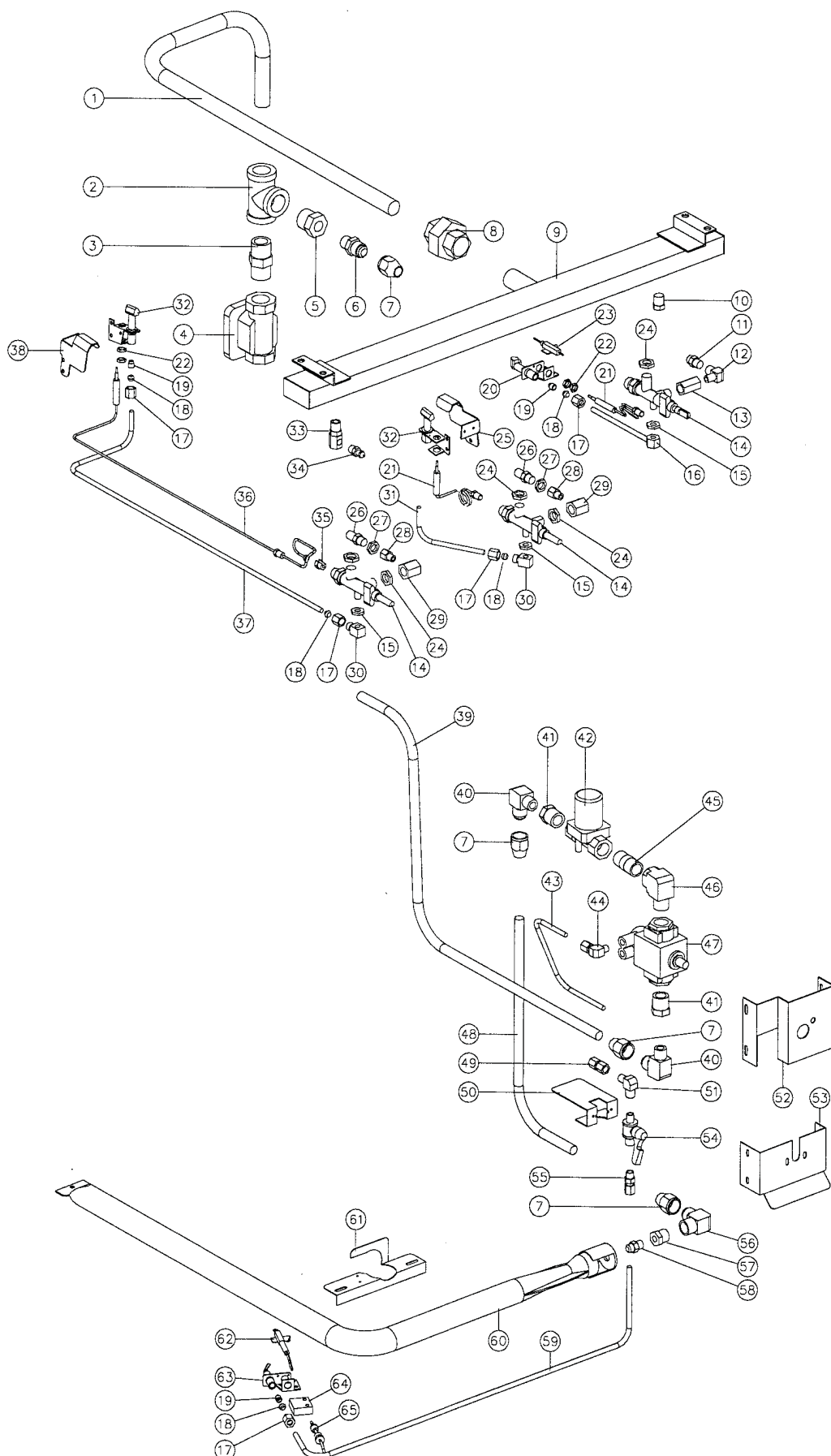
10.3.2 RN8410GC Gas Piping Assembly (FFP) - From S/N 31201 to 224659



Pos	Part No	Description
1	014803	HOB SUPPLY PIPE
2	011833	TEE - 3/4"
3	013473	NIPPLE
4	011853	REGULATOR (NATURAL GAS ONLY)
5	012048	REDUCING BUSH - 3/8" x 3/4"
6	011003	CONNECTOR - 1/2" x 3/8"
7	011002	CONE NUT
8	011827	MACK UNION
9	004146	MANIFOLD RN8410GC
10	011148	PLUG - 1/4"
11	013215	BACKNUT - 1/4" BSP
12	032130	GRIDDLE INJECTOR Ø1.30 mm - LPG
	032210	GRIDDLE INJECTOR Ø2.10 mm - NATURAL GAS
13	011634	PILOT ELBOW (UP TO S/N 278399) (NOT AVAILABLE REFER ITEM 15, 016518)
	026022	PILOT ELBOW (FROM S/N 278400) (NOT AVAILABLE REFER ITEM 15, 016518)
14	012918	OUTLET CONNECTOR (NOT AVAILABLE REFER ITEM 15, 016518)
15	016518	GRIDDLE TAP ASSEMBLY (INCLUDES ITEMS 11,13,14,22)
	017611	OPEN BURNER TAP ASSEMBLY (INCLUDES ITEMS 11,22,33)
16	019215K	GRIDDLE PILOT BURNER KIT (INCLUDES ITEMS 17,19,20,24,25)
17	018741	CLAMP NUT
18	019428	THERMOCOUPLE - GRIDDLE
	019575	M10 THERMOCOUPLE SPLIT NUT
19	018692	PILOT INJECTOR Ø0.20mm - LP GAS
	018693	PILOT INJECTOR Ø0.32mm - NATURAL GAS
20	018740	COMPRESSION NUT 1/4"
	018739	OLIVE
21	020656	GRIDDLE PILOT SUPPLY TUBE
22	012919	BACKNUT
23	018095	HIGH TENSION LEAD
24	018742	ELECTRODE NUT
25	018744	PILOT ELECTRODE
26	019425	GRIDDLE PILOT BRACKET
27	011741	PRESSURE ADAPTOR
28	019371	PRESSURE TEST POINT
29	017607	PILOT SHROUD - FRONT
30	034130	OPEN BURNER INJECTOR Ø1.30 mm - LPG
	034210	OPEN BURNER INJECTOR Ø2.10 mm - NATURAL GAS
31	011740	JET BACKNUT
32	017613	ADAPTOR - 1/8" BSP M/F (NOT AVAILABLE, REFER TO ITEM 15, 017611)
33	017612	INJECTOR ELBOW (UP TO S/N 278399)(NOT AVAILABLE, REFER TO ITEM 15, 017611)
	026023	INJECTOR ELBOW (FROM S/N 278400)(NOT AVAILABLE, REFER TO ITEM 15, 017611)
34	017079	PILOT OUTLET FITTING
35	011286	OLIVE
36	011287	NUT
37	017614	PILOT TUBE FRONT
38	012916	THERMOCOUPLE - 300 mm
	024573	THERMOCOUPLE LOCK-NUT (NOT ILLUSTRATED)
39	013000K	PILOT BURNER KIT (INCLUDES ITEM 43)
40	019575	M10 THERMOCOUPLE SPLIT NUT
41	017615	PILOT TUBE REAR
42	017617	THERMOCOUPLE - 750 mm
	024573	THERMOCOUPLE LOCK-NUT (NOT ILLUSTRATED)
43	011650	PILOT SPUD - LPG
	011651	PILOT SPUD - NATURAL

44	017608	PILOT SHROUD - REAR
45	014801	CONTROL SUPPLY PIPE
46	011747	ELBOW - 3/8" x 1/2"
47	011656	REDUCING BUSH - 3/8" x 1/2"
48	019454	SOLENOID VALVE
49	013235	NIPPLE - 1/2"
50	018350	ELBOW - 1/2"
51	013153	FLAME FAILURE CONTROL
52	013836	ELBOW - 1/8" X 1/4"
53	013190	PILOT SUPPLY TUBE
54	012250	OVEN SUPPLY TUBE
55	011742	CONNECTOR - 1/8" x 1/4"
56	013184	CLAMP BRACKET
57	011634	ELBOW - 1/8"
58	013155	BALL VALVE
59	012753	CONNECTOR - 1/8" x 1/4"
60	013182	SAFETY MOUNTING BRACKET
61	013183	BALL VALVE MOUNTING BRACKET
62	011600	ELBOW - 3/8" x 1/2"
63	011601	REDUCING BUSH - 3/8" x 1/8"
64	032150	OVEN INJECTOR Ø1.50mm - LPG
	032230	OVEN INJECTOR Ø2.30mm - NATURAL GAS
65	012423	INJECTOR SUPPORT BRACKET
66	019445	OVEN PILOT SUPPLY TUBE
67	012248	OVEN BURNER
68	022248	BURNER RETAINING BRACKET
69	018691K	OVEN PILOT BURNER KIT (INCLUDES ITEMS 17,19,20,24,25)
70	020253	THERMOCOUPLE- 1200mm
71	019407	HIGH TENSION LEAD
72	019330	OVEN PILOT BRACKET
73	023863	GRIDDLE PILOT DRAFT BAFFLE (FROM S/N 215176)

10.3.3 RN8410GC Gas Piping Assembly (FFP) - To S/N 31200



Pos	Part No	Description
1	014803	HOB SUPPLY PIPE
2	011833	TEE - 3/4"
3	013473	NIPPLE
4	011853	REGULATOR (NATURAL GAS ONLY)
5	012048	REDUCING BUSH - 3/8" x 3/4"
6	011003	CONNECTOR - 1/2" x 3/8"
7	011002	CONE NUT
8	011827	MACK UNION
9	004478	MANIFOLD
10	011148	PLUG - 1/4"
11	032130	GRIDDLE INJECTOR Ø1.30 mm - LPG
	032210	GRIDDLE INJECTOR Ø2.10 mm - NATURAL GAS
12	011634	PILOT ELBOW (UP TO S/N 278399) (NOT AVAILABLE REFER ITEM 14, 016518)
	026022	PILOT ELBOW (FROM S/N 278400) (NOT AVAILABLE REFER ITEM 14, 016518)
13	012918	OUTLET CONNECTOR (NOT AVAILABLE REFER ITEM 14, 016518)
14	016518	GRIDDLE TAP ASSY (ASSEMBLED WITH ITEMS 12,13,15,24)
	017611	OPEN BURNER TAP ASSEMBLY (INCLUDES ITEMS 12,15,29)
15	012919	BACKNUT- 5/16" UNF
16	012921	PILOT TUBE ASSEMBLY
17	011287	NUT (PART OF ITEM 20,63)
18	011286	OLIVE (PART OF ITEM 20,63)
19	011650	PILOT SPUD - LPG
	011651	PILOT SPUD - NATURAL
20	012699K	GRIDDLE PILOT BURNER KIT (ASSEMBLED WITH ITEMS 17,18,19)
21	012916	THERMOCOUPLE - 300 mm
22	024573	THERMOCOUPLE LOCK-NUT
23	013801	PIEZO ELECTRODE
24	013215	BACKNUT - 1/4" BSP
25	017607	PILOT SHROUD - FRONT
26	034130	OPEN BURNER INJECTOR Ø1.30 mm - LPG
	034210	OPEN BURNER INJECTOR Ø2.10 mm - NATURAL GAS
27	011740	JET BACKNUT
28	017613	ADAPTOR - 1/8" BSP M/F (NOT AVAILABLE, REFER TO ITEM 14, 017611)
29	017612	INJECTOR ELBOW (UP TO S/N 278399)(NOT AVAILABLE, REFER TO ITEM 14, 017611)
	026023	INJECTOR ELBOW (FROM S/N 278400)(NOT AVAILABLE, REFER TO ITEM 14, 017611)
30	017079	PILOT OUTLET FITTING
31	017614	PILOT TUBE FRONT
32	013000K	PILOT BURNER KIT (USES ITEM 19 PILOT SPUDS)
33	011741	PRESSURE ADAPTOR
34	011337	PRESSURE TEST POINT
35	019575	M10 THERMOCOUPLE SPLIT NUT
36	017617	THERMOCOUPLE - 750 mm
	024573	THERMOCOUPLE LOCK-NUT (NOT ILLUSTRATED)
37	017615	PILOT TUBE REAR
38	017608	PILOT SHROUD - REAR
39	014801	CONTROL SUPPLY PIPE
40	011747	ELBOW - 3/8" x 1/2"
41	011656	REDUCING BUSH - 3/8" x 1/2"
42	019454	SOLENOID VALVE
43	013190	PILOT SUPPLY TUBE
44	013836	ELBOW - 1/8" X 1/4"
45	013235	NIPPLE - 1/2"
46	018350	ELBOW - 1/2"
47	013153	FLAME FAILURE CONTROL

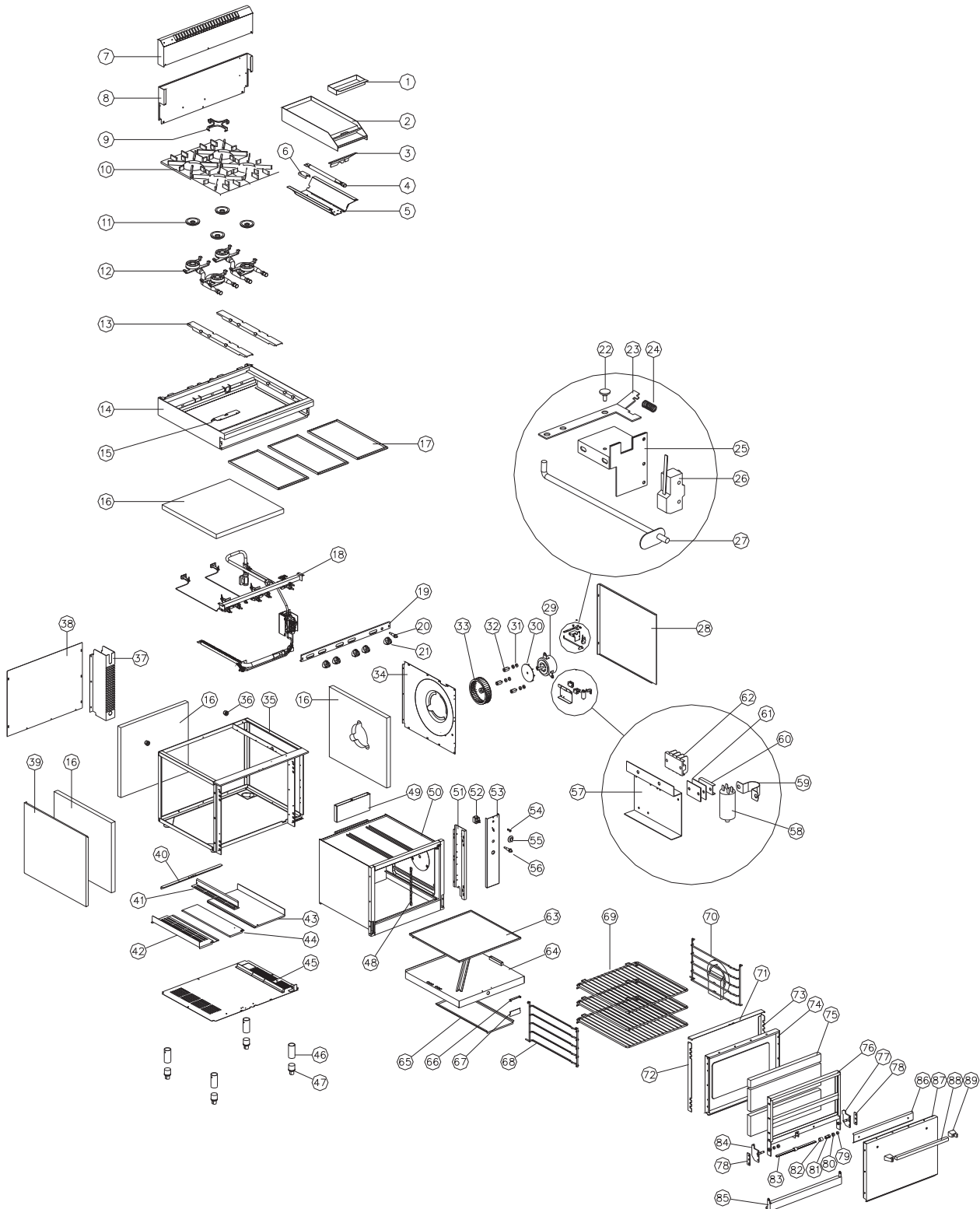
48	012250	OVEN SUPPLY TUBE
49	011742	CONNECTOR - 1/8" x 1/4"
50	013184	CLAMP BRACKET
51	011634	ELBOW - 1/8"
52	013182	SAFETY MOUNTING BRACKET
53	013183	BALL VALVE MOUNTING BRACKET
54	013155	BALL VALVE
55	012753	CONNECTOR - 1/8" x 1/4"
56	011600	ELBOW - 3/8" x 1/2"
57	011601	REDUCING BUSH - 3/8" x 1/8"
58	032150	OVEN INJECTOR Ø1.50mm - LPG
	032230	OVEN INJECTOR Ø2.30mm - NATURAL GAS
59	013263	OVEN PILOT SUPPLY TUBE
60	012248	OVEN BURNER
61	012608	PILOT BRACKET
62	018347	IGNITOR ELECTRODE - OVEN
	018252	ELECTRODE / HT LEAD ASSEMBLY (NOT ILLUSTRATED)
63	012331K	OVEN PILOT BURNER KIT (USES ITEM 19 PILOT SPUDS)
64	004154	PILOT SPACER
65	011771	THERMOCOUPLE

11. RN8610GC / RN8810GC PARTS DIAGRAMS

SECTION	PAGE NO.
11.1 RN8610GC / RN8810GC MAIN ASSEMBLY	68
11.1.1 Main Assembly - From S/N 224660	68
11.1.2 Main Assembly - To S/N 224659	72
11.2 RN8610GC / RN8810GC GAS PIPING ASSEMBLY (STANDARD).....	76
11.2.1 Gas Piping Assembly (Standard) - From S/N 224660	76
11.2.2 Gas Piping Assembly (Standard) - From S/N 31201 to S/N 224659.....	78
11.2.3 Gas Piping Assembly (Standard) - To S/N 31200	81
11.3 RN8610GC / RN8810GC GAS PIPING ASSEMBLY (FFP)	84
11.3.1 Gas Piping Assembly (FFP) - From S/N 224660	84
11.3.2 Gas Piping Assembly (FFP) - From S/N 31201 to S/N 224659.....	87
11.3.3 Gas Piping Assembly (FFP) - To S/N 31200	90

11.1 RN8610GC / RN8810GC MAIN ASSEMBLY

11.1.1 RN8610GC / RN8810GC Main Assembly - From S/N 224660



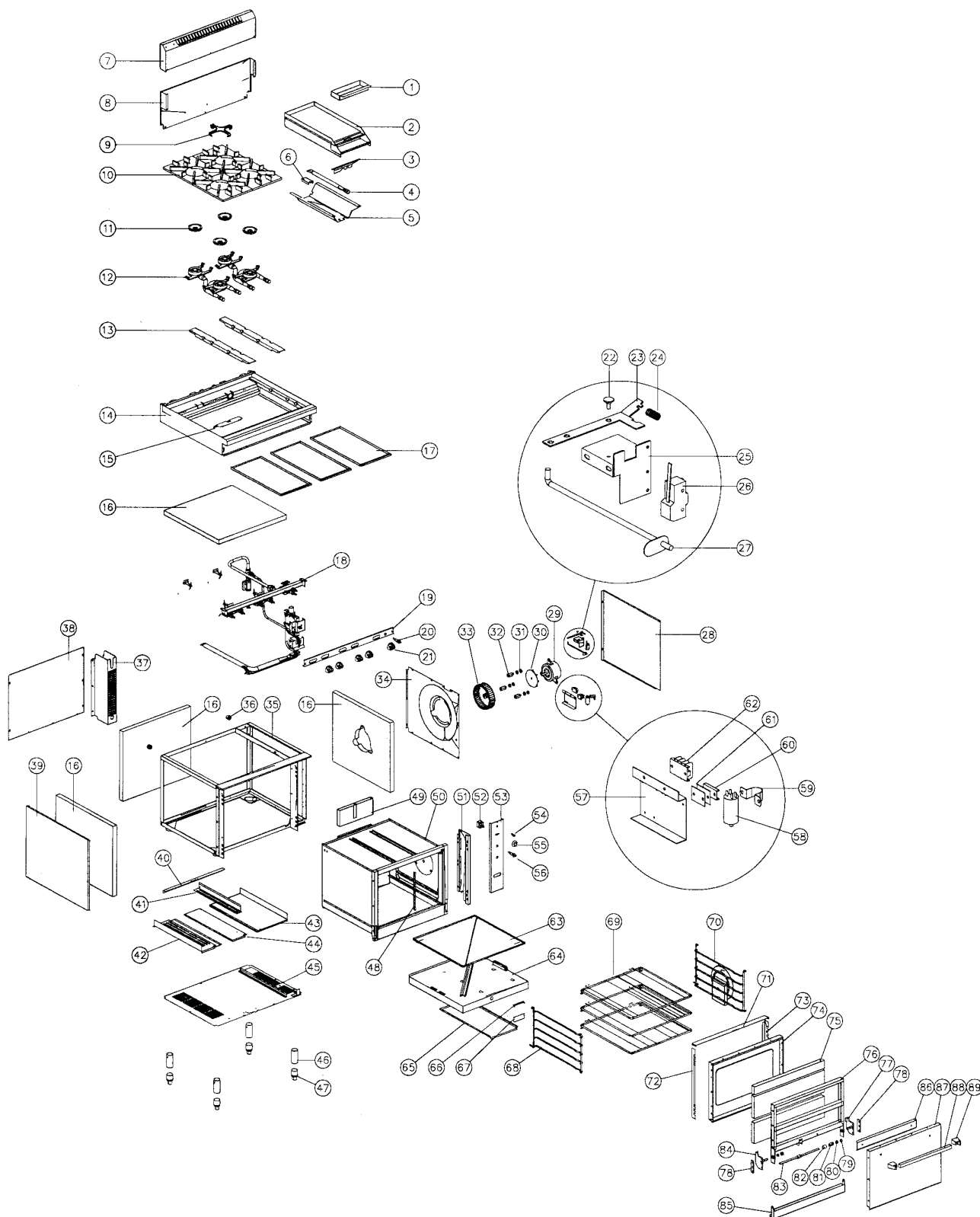
Pos	Part No	Description
1	016511	TROUGH TRAY
2	016387	GRIDDLE (900 mm)
	016386	GRIDDLE (600 mm)
	016385	GRIDDLE (300 mm)
3	017609	HEAT SHIELD
4	014105	GRIDDLE BURNER
5	019431	GRIDDLE REFLECTOR
6	014106	GRIDDLE BURNER BRACKET
7	014220	SPLASHBACK RN8610GC
	014221	SPLASHBACK RN8810GC
8	012849	HOB BACK PANEL RN8610GC
	012850	HOB BACK PANEL RN8810GC
9	016659	POT STAND SPIDER
10	004125	POT STAND
11	004078	BURNER CAP
12	004079	FRONT BURNER ASSEMBLY
	004080	REAR BURNER ASSEMBLY
13	015439	POT SUPPORT
14	014245	HOB - RN8610GC
	014246	HOB - RN8810GC
15	017609	HEAT SHIELD (-FFP UNITS ONLY)
16	090415	INSULATION
17	004158	HOB TRAY
18	-----	GAS PIPING ASSEMBLY (SEE SECTION 11.2 & 11.2)
19	004422	HOB CONTROL PANEL RN8619GC
	004759	HOB CONTROL PANEL RN8616GC
	004760	HOB CONTROL PANEL RN8613GC
	004761	HOB CONTROL PANEL RN8610GC
	004499	HOB CONTROL PANEL RN8616GC -FFP
	004498	HOB CONTROL PANEL RN8613GC -FFP
	004497	HOB CONTROL PANEL RN8610GC -FFP
	004762	HOB CONTROL PANEL RN8819GC
	004763	HOB CONTROL PANEL RN8816GC
	004764	HOB CONTROL PANEL RN8813GC
	004765	HOB CONTROL PANEL RN8810GC
	004503	HOB CONTROL PANEL RN8819GC -FFP
	004502	HOB CONTROL PANEL RN8816GC -FFP
	004501	HOB CONTROL PANEL RN8813GC -FFP
	004500	HOB CONTROL PANEL RN8810GC -FFP
20	020119	PIEZO IGNITOR
21	014451	KNOB ASSEMBLY - FRONT
	014452	KNOB ASSEMBLY - REAR
	014453	KNOB ASSEMBLY - PLATE
22	003396	PIVOT PIN
23	012362	LEVER ARM
24	014397	MICROSWITCH SPRING
25	012335	MICROSWITCH BRACKET
26	017928	MICROSWITCH
27	019484	MICROSWITCH ROD
28	015045	SIDE PANEL - R.H RN8610GC
	015046	SIDE PANEL - R.H RN8810GC
29	019479K	FAN MOTOR KIT (INCLUDES ITEMS 30,31)
30	010866	COOLING DISC
31	010859	RUBBER BUSHES
32	013627	MOUNTING SPACER
33	010856	FAN WHEEL
34	015043	SIDE INSULATION PANEL

35	004257	CHASSIS RN8610GC
	004258	CHASSIS RN8810GC
36	014157	SPACER FOOT
37	014798	GAS HOUSING
38	014804	BACK PANEL RN8610GC
	014925	BACK PANEL RN8810GC
39	014316	SIDE PANEL - LH
40	012606	BURNER SUPPORT ANGLE
41	012607	BURNER SHIELD
42	012411	BOTTOM BAFFLE
43	012412	INSULATION TRAY
44	012609	BAFFLE SPACER
45	019442	BOTTOM INSULATION PANEL
46	014873	LEG TUBE - ADJUSTABLE
	014872	ADJUSTABLE LEG ASSEMBLY (46 & 47 ASSEMBLED)
47	010990	ADJUSTABLE FOOT
48	017961	PIAL GUARD
49	012233	VENT
50	004260	OVEN
51	014317	SPACER PANEL
52	011987	THERMOSTAT
53	004896	OVEN CONTROL PANEL
54	013528	PILOT LIGHT
55	015563	THERMOSTAT KNOB
56	020119	PIEZO IGNITOR
57	012077	TERMINAL BLOCK BRACKET
58	010909	CAPACITOR
59	010023	SADDLE CLAMP
60	002138	CABLE CLAMP
61	002441	CABLE INSULATOR
62	013586	TERMINAL BLOCK
63	004141	BAFFLE TRAY
64	004516	BURNER BOX
65	011509	FLAME BAFFLE
66	012473	PILOT FLAP BRACKET
67	012472	PILOT FLAP
68	011514	RACK SUPPORT - LH
69	011515	OVEN RACK
70	012610	RACK SUPPORT
71	014314	OVEN TRIM - TOP
72	014318	OVEN TRIM - RH
73	014319	OVEN TRIM - LH
74	004263	DOOR INNER
75	090415	INSULATION
76	004264	DOOR FRAME
77	004224	PIVOT PLATE - R.H
78	014344	WASHER PLATE
79	015093	SPACER BUSH
80	044062	M12 HEX NUT
81	014306	TORSION ADJUSTOR
	041648	GRUB SCREW - M6 x 8 (NOT ILLUSTRATED)
82	014563	SLEEVE
83	014341	TORSION STRIP (5 STRIPS PER DOOR)
84	004223	PIVOT PLATE - L.H
85	014354	PILOT ACCESS PANEL
86	014347	HANDLE STIFFENER
87	014301	DOOR OUTER
88	014345	HANDLE
89	014346	HANDLE END CAP

GAS TYPE CONVERSION KITS

Model	Serial Numbers		Country	Conversion Kit		
	From	To		→ LPG	→ Butane	→ Natural
RN8619GC	31290	→	Australia only	22923	Use NZ LPG kit	22933
			NZ / Other countries	26246		
	←	31289		16766 & 12448	On request	16754 & 12503
RN8616GC	31290	→	Australia only	22924	Use NZ LPG kit	22934
			NZ / Other countries	26247		
	←	31289		16767 & 12448	On request	16755 & 12503
RN8613GC	31290	→	Australia only	22925	Use NZ LPG kit	22935
			NZ / Other countries	26248		
	←	31289		16768 & 12448	On request	16756 & 12503
RN8610GC	31290	→	Australia only	22926	Use NZ LPG kit	22936
			NZ / Other countries	26249		
	←	31289		16769 & 12448	On request	16757 & 12503
RN8819GC	31290	→	Australia only	22927	Use NZ LPG kit	22937
			NZ / Other countries	26250		
	←	31289		16770 & 12448	On request	16758 & 12503
RN8816GC	31290	→	Australia only	22928	Use NZ LPG kit	22938
			NZ / Other countries	26251		
	←	31289		16771 & 12448	On request	16759 & 12503
RN8813GC	31290	→	Australia only	22929	Use NZ LPG kit	22939
			NZ / Other countries	26252		
	←	31289		16772 & 12448	On request	16760 & 12503
RN8810GC	31290	→	Australia only	22930	Use NZ LPG kit	22940
			NZ / Other countries	26253		
	←	31289		16773 & 12448	On request	16761 & 12503

11.1.2 RN8610GC / RN8810GC Main Assembly - To S/N 224659



Pos	Part No.	Description
1	016511	TROUGH TRAY
2	016387	GRIDDLE (900 mm)
	016386	GRIDDLE (600 mm)
	016385	GRIDDLE (300 mm)
3	017609	HEAT SHIELD
4	014105	GRIDDLE BURNER
5	019431	GRIDDLE REFLECTOR
6	014106	GRIDDLE BURNER BRACKET
7	014220	SPLASHBACK RN8610GC
	014221	SPLASHBACK RN8810GC
8	012849	HOB BACK PANEL RN8610GC
	012850	HOB BACK PANEL RN8810GC
9	016659	POT STAND SPIDER
10	004125	POT STAND
11	004078	BURNER CAP
12	004079	FRONT BURNER ASSEMBLY
	004080	REAR BURNER ASSEMBLY
13	015439	POT SUPPORT
14	014245	HOB - RN8610GC
	014246	HOB - RN8810GC
15	017609	HEAT SHIELD (-FFP UNITS ONLY)
16	090415	INSULATION
17	004158	HOB TRAY
18	-----	GAS PIPING ASSEMBLY (SEE SECTION 11.2 & 11.3)
19	004422	HOB CONTROL PANEL RN8619GC
	004423	HOB CONTROL PANEL RN8616GC (to S/N 30483)
	004759	HOB CONTROL PANEL RN8616GC (from S/N 30484)
	004424	HOB CONTROL PANEL RN8613GC (to S/N 30483)
	004760	HOB CONTROL PANEL RN8613GC (from S/N 30484)
	004425	HOB CONTROL PANEL RN8610GC (to S/N 30483)
	004761	HOB CONTROL PANEL RN8610GC (from S/N 30484)
	004499	HOB CONTROL PANEL RN8616GC -FFP
	004498	HOB CONTROL PANEL RN8613GC -FFP
	004497	HOB CONTROL PANEL RN8610GC -FFP
	004426	HOB CONTROL PANEL RN8819GC (to S/N 30483)
	004762	HOB CONTROL PANEL RN8819GC (from S/N 30484)
	004427	HOB CONTROL PANEL RN8816GC (to S/N 30483)
	004763	HOB CONTROL PANEL RN8816GC (from S/N 30484)
	004428	HOB CONTROL PANEL RN8813GC (to S/N 30483)
	004764	HOB CONTROL PANEL RN8813GC (from S/N 30484)
	004429	HOB CONTROL PANEL RN8810GC (to S/N 30483)
	004765	HOB CONTROL PANEL RN8810GC (from S/N 30484)
	004503	HOB CONTROL PANEL RN8819GC -FFP
	004502	HOB CONTROL PANEL RN8816GC -FFP
	004501	HOB CONTROL PANEL RN8813GC -FFP
	004500	HOB CONTROL PANEL RN8810GC -FFP
20	020119	PIEZO IGNITOR
21	014451	KNOB ASSEMBLY - FRONT
	014452	KNOB ASSEMBLY - REAR
	014453	KNOB ASSEMBLY - PLATE
22	003396	PIVOT PIN
23	012362	LEVER ARM
24	014397	MICROSWITCH SPRING
25	012335	MICROSWITCH BRACKET
26	017928	MICROSWITCH
27	019484	MICROSWITCH ROD
28	015045	SIDE PANEL - R.H RN8610GC

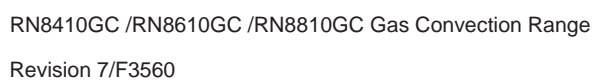
	015046	SIDE PANEL - R.H RN8810GC
29	019479K	FAN MOTOR KIT (INCLUDES ITEMS 30,31)
30	010866	COOLING DISC
31	010859	RUBBER BUSHES
32	013627	MOUNTING SPACER
33	010856	FAN WHEEL
34	015043	SIDE INSULATION PANEL
35	004257	CHASSIS RN8610GC
	004258	CHASSIS RN8810GC
36	014157	SPACER FOOT
37	014798	GAS HOUSING
38	014804	BACK PANEL RN8610GC
	014925	BACK PANEL RN8810GC
39	014316	SIDE PANEL - LH
40	012606	BURNER SUPPORT ANGLE
41	012607	BURNER SHIELD
42	012411	BOTTOM BAFFLE
43	012412	INSULATION TRAY
44	012609	BAFFLE SPACER
45	019442	BOTTOM INSULATION PANEL
46	014873	LEG TUBE - ADJUSTABLE
	014872	ADJUSTABLE LEG ASSEMBLY (46 & 47 ASSEMBLED)
47	010990	ADJUSTABLE FOOT
48	017961	PIRAL GUARD
49	012233	VENT
50	004260	OVEN
51	014317	SPACER PANEL
52	011987	THERMOSTAT
53	004246	OVEN CONTROL PANEL
54	013528	PILOT LIGHT
55	015563	THERMOSTAT KNOB
56	020119	PIEZO IGNITOR
57	012077	TERMINAL BLOCK BRACKET
58	010909	CAPACITOR
59	010023	SADDLE CLAMP
60	002138	CABLE CLAMP
61	002441	CABLE INSULATOR
62	013586	TERMINAL BLOCK
63	004141	BAFFLE TRAY
64	004516	BURNER BOX
65	011509	FLAME BAFFLE
66	012473	PILOT FLAP BRACKET (FROM S/N 30951)
67	012472	PILOT FLAP (FROM S/N 30951)
68	011514	RACK SUPPORT - LH
69	011515	OVEN RACK
70	012610	RACK SUPPORT
71	014314	OVEN TRIM - TOP
72	014318	OVEN TRIM - RH
73	014319	OVEN TRIM - LH
74	004263	DOOR INNER
75	090415	INSULATION
76	004264	DOOR FRAME
77	004224	PIVOT PLATE - R.H
78	014344	WASHER PLATE
79	015093	SPACER BUSH
80	044062	M12 HEX NUT
81	014306	TORSION ADJUSTOR
	041648	GRUB SCREW - M6 x 8 (NOT ILLUSTRATED)
82	014563	SLEEVE

83	014341	TORSION STRIP (5 STRIPS PER DOOR)
84	004223	PIVOT PLATE - L.H
85	014354	PILOT ACCESS PANEL
86	014347	HANDLE STIFFENER
87	014301	DOOR OUTER
88	014345	HANDLE
89	014346	HANDLE END CAP

GAS TYPE CONVERSION KITS

Model	Serial Numbers		Country	Conversion Kit		
	From	To		→ LPG	→ Butane	→ Natural
RN8619GC	31290	→	Australia only	22923	Use NZ LPG kit	22933
			NZ / Other countries	26246		
	←	31289		16766 & 12448	On request	16754 & 12503
RN8616GC	31290	→	Australia only	22924	Use NZ LPG kit	22934
			NZ / Other countries	26247		
	←	31289		16767 & 12448	On request	16755 & 12503
RN8613GC	31290	→	Australia only	22925	Use NZ LPG kit	22935
			NZ / Other countries	26248		
	←	31289		16768 & 12448	On request	16756 & 12503
RN8610GC	31290	→	Australia only	22926	Use NZ LPG kit	22936
			NZ / Other countries	26249		
	←	31289		16769 & 12448	On request	16757 & 12503
RN8819GC	31290	→	Australia only	22927	Use NZ LPG kit	22937
			NZ / Other countries	26250		
	←	31289		16770 & 12448	On request	16758 & 12503
RN8816GC	31290	→	Australia only	22928	Use NZ LPG kit	22938
			NZ / Other countries	26251		
	←	31289		16771 & 12448	On request	16759 & 12503
RN8813GC	31290	→	Australia only	22929	Use NZ LPG kit	22939
			NZ / Other countries	26252		
	←	31289		16772 & 12448	On request	16760 & 12503
RN8810GC	31290	→	Australia only	22930	Use NZ LPG kit	22940
			NZ / Other countries	26253		
	←	31289		16773 & 12448	On request	16761 & 12503

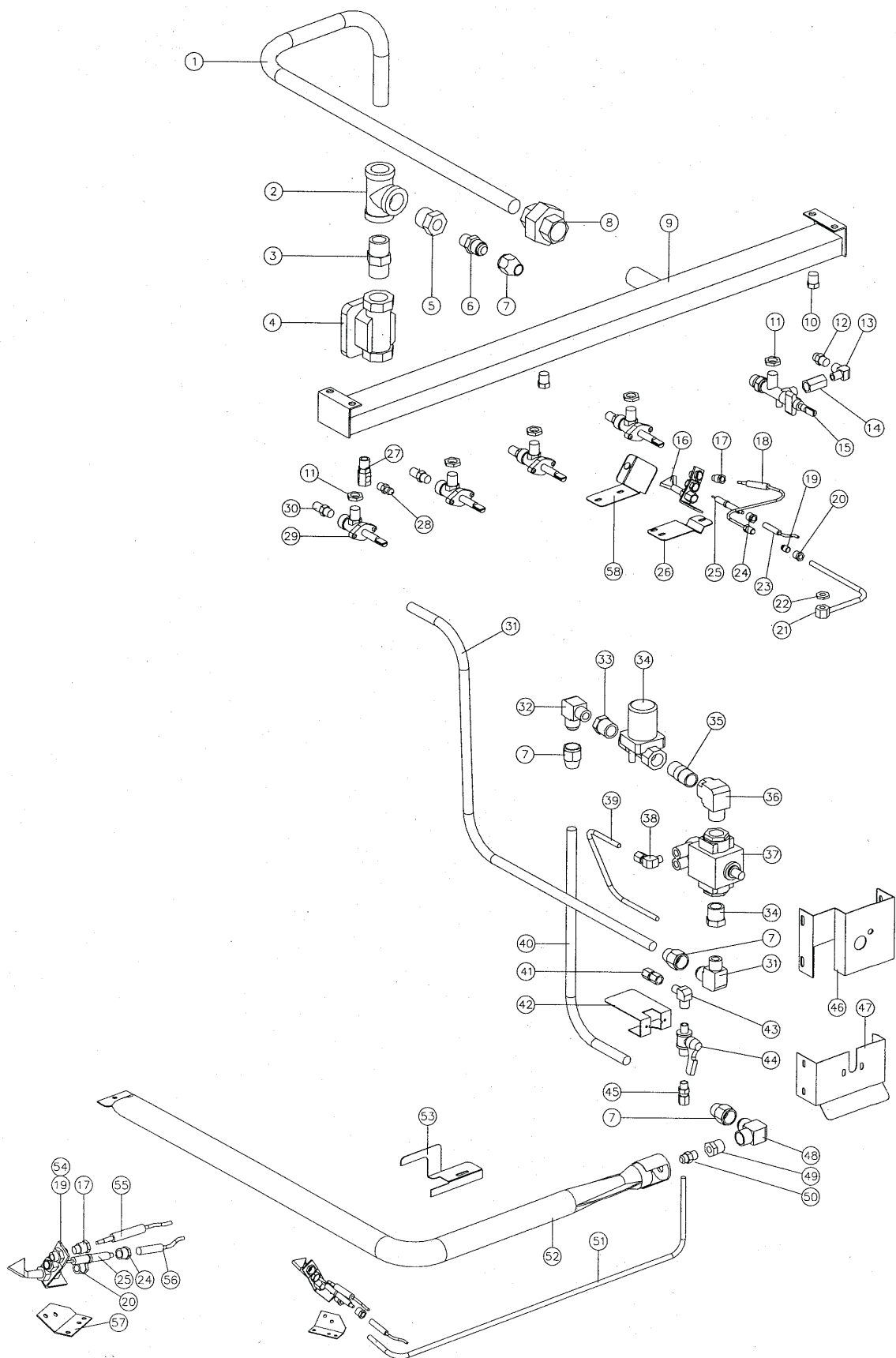
11.2.1 RN8610GC / RN8810GC Gas Piping Assembly (Std) - From S/N 224660



Pos	Part No	Description
1	014803	HOB SUPPLY PIPE
2	011833	TEE - 3/4"
3	013473	NIPPLE
4	011853	REGULATOR (NATURAL GAS ONLY)
5	012048	REDUCING BUSH - 3/8" x 3/4"
8	011827	MACK UNION
9	004147	MANIFOLD RN8610GC
	004148	MANIFOLD RN8810GC
10	011148	PLUG - 1/4"
11	013215	BACKNUT - 1/4" BSP
12	032130	GRIDDLE INJECTOR Ø1.30 mm - LPG
	032210	GRIDDLE INJECTOR Ø2.10 mm - NATURAL GAS
13	011634	INJECTOR ELBOW (UP TO S/N 278399)(NOT AVAILABLE, REFER TO ITEM 15, 017611)
	026023	INJECTOR ELBOW (FROM S/N 278400)(NOT AVAILABLE, REFER TO ITEM 15, 017611)
14	012918	OUTLET CONNECTOR (NOT AVAILABLE REFER ITEM 15, 016518)
15	016518	GRIDDLE TAP ASSEMBLY (INCLUDES ITEMS 11,13,14,22)
16	019215K	GRIDDLE PILOT BURNER KIT (INCLUDES ITEMS 17,19,20,24,25)
17	018741	CLAMP NUT
18	019428	THERMOCOUPLE - GRIDDLE
	019575	M10 THERMOCOUPLE SPLIT NUT
19	018692	PILOT INJECTOR Ø0.20mm - LP GAS
	018693	PILOT INJECTOR Ø0.32mm - NATURAL GAS
20	018740	COMPRESSION NUT 1/4"
	018739	OLIVE
21	020656	GRIDDLE PILOT SUPPLY TUBE
22	012919	BACKNUT
23	018095	HIGH TENSION LEAD
24	018742	ELECTRODE NUT
25	018744	PILOT ELECTRODE
26	019425	GRIDDLE PILOT BRACKET
27	011741	PRESSURE ADAPTOR
28	019371	PRESSURE TEST POINT
29	020639	GAS TAP
30	034130	OPEN BURNER INJECTOR Ø1.30 mm - LPG
	034210	OPEN BURNER INJECTOR Ø2.10 mm - NATURAL GAS
31	013837	CONNECTOR
32	024136	CONTROL SUPPLY PIPE
33	024133	CONTROL MOUNTING BRACKET
34	020064	GAS VALVE BRACKET
35	014408	CONNECTOR
36	020103K	GAS CONTROL KIT (INCLUDES ITEM 56)
37	022689	INJECTOR CONNECTOR
38	022686	¼" SS FLEXI PIPE
39	021288	CONNECTOR
40	024142	ELBOW – 3/8" BSP FF
41	011601	REDUCING BUSH
42	032150	OVEN INJECTOR Ø1.50mm - LPG
	032250	OVEN INJECTOR Ø2.50mm - NATURAL GAS
43	012248	OVEN BURNER
44	022248	BURNER RETAINING BRACKET
45	024137	PILOT SUPPLY TUBE
46	012753	CONNECTOR – 1/8" x 1/4"
47	018691K	OVEN PILOT BURNER KIT (INCLUDES ITEMS 20,48,49,52,53)
48	018692	PILOT INJECTOR Ø0.20mm - LPG
	018693	PILOT INJECTOR Ø0.32mm - NATURAL GAS
49	018741	CLAMP NUT

50	019429	THERMOCOUPLE – 850mm
51	024267	OVEN PILOT BRACKET
52	018744	PILOT ELECTRODE
53	018742	ELECTRODE NUT
54	019407	HIGH TENSION LEAD
55	023863	GRIDDLE PILOT DRAFT BAFFLE
56	018096	REGULATOR KNOCK-OUT PIN (ALL GASES)

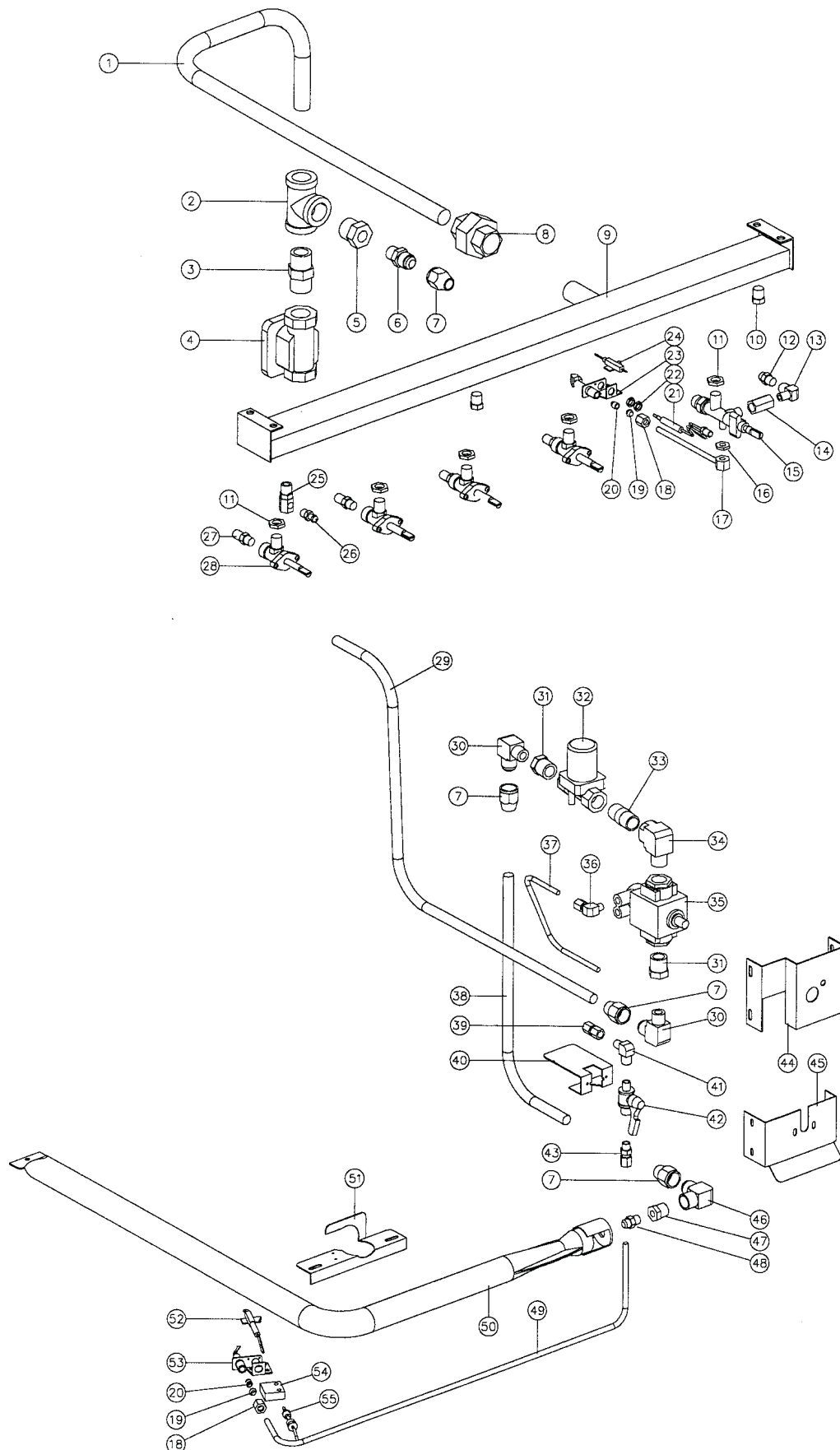
11.2.2 RN8610GC / RN8810GC Gas Piping Assembly (Std) - From S/N 31201 to 224659



Pos	Part No	Description
1	014803	HOB SUPPLY PIPE
2	011833	TEE - 3/4"
3	013473	NIPPLE
4	011853	REGULATOR (NATURAL GAS ONLY)
5	012048	REDUCING BUSH - 3/8" x 3/4"
6	011003	CONNECTOR - 1/2" x 3/8"
7	011002	CONE NUT
8	011827	MACK UNION
9	004147	MANIFOLD RN8610GC
	004148	MANIFOLD RN8810GC
10	011148	PLUG - 1/4"
11	013215	BACKNUT - 1/4" BSP
12	032130	GRIDDLE INJECTOR Ø1.30 mm - LPG
	032210	GRIDDLE INJECTOR Ø2.10 mm - NATURAL GAS
13	011634	PILOT ELBOW (UP TO S/N 278399) (NOT AVAILABLE REFER ITEM 15, 016518)
	026022	PILOT ELBOW (FROM S/N 278400) (NOT AVAILABLE REFER ITEM 15, 016518)
14	012918	OUTLET CONNECTOR (NOT AVAILABLE REFER ITEM 15, 016518)
15	016518	GRIDDLE TAP ASSEMBLY (INCLUDES ITEMS 11,13,14,22)
16	019215K	GRIDDLE PILOT BURNER KIT (INCLUDES ITEMS 17,19,20,24,25)
17	018741	CLAMP NUT
18	019428	THERMOCOUPLE - GRIDDLE
	019575	M10 THERMOCOUPLE SPLIT NUT
19	018692	PILOT INJECTOR Ø0.20mm - LP GAS
	018693	PILOT INJECTOR Ø0.32mm - NATURAL GAS
20	018740	COMPRESSION NUT 1/4"
	018739	OLIVE
21	020656	GRIDDLE PILOT SUPPLY TUBE
22	012919	BACKNUT
23	018095	HIGH TENSION LEAD
24	018742	ELECTRODE NUT
25	018744	PILOT ELECTRODE
26	019425	GRIDDLE PILOT BRACKET
27	011741	PRESSURE ADAPTOR
28	019371	PRESSURE TEST POINT
29	020639	GAS TAP
30	034130	OPEN BURNER INJECTOR Ø1.30 mm - LPG
	034210	OPEN BURNER INJECTOR Ø2.10 mm - NATURAL GAS
31	014801	CONTROL SUPPLY PIPE
32	011747	ELBOW - 3/8" x 1/2"
33	011656	REDUCING BUSH - 3/8" x 1/2"
34	019454	SOLENOID VALVE
35	013235	NIPPLE - 1/2"
36	018350	ELBOW - 1/2"
37	013153	FLAME FAILURE CONTROL
38	013836	ELBOW - 1/8" X 1/4"
39	013190	PILOT SUPPLY TUBE
40	012250	OVEN SUPPLY TUBE
41	011742	CONNECTOR - 1/8" x 1/4"
42	013184	CLAMP BRACKET
43	011634	ELBOW - 1/8"
44	013155	BALL VALVE
45	012753	CONNECTOR - 1/8" x 1/4"
46	013182	SAFETY MOUNTING BRACKET
47	013183	BALL VALVE MOUNTING BRACKET
48	011600	ELBOW - 3/8" x 1/2"

49	011601	REDUCING BUSH - 3/8" x 1/8"
50	032150	OVEN INJECTOR Ø1.50mm - LPG
	032230	OVEN INJECTOR Ø2.30mm - NATURAL GAS
51	019445	OVEN PILOT SUPPLY TUBE
52	012248	OVEN BURNER
53	022248	BURNER RETAINING BRACKET
54	018691K	OVEN PILOT BURNER KIT (INCLUDES ITEMS 17,19,20,24,25)
55	020253	THERMOCOUPLE - 1200mm
56	019407	HIGH TENSION LEAD
57	019330	OVEN PILOT BRACKET
58	023863	GRIDDLE PILOT DRAFT BAFFLE (FROM S/N 215176)

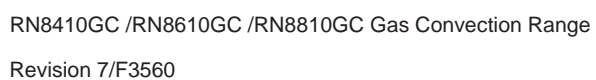
11.2.3 RN8610GC / RN8810GC Gas Piping Assembly (Std) - To S/N 31200



Pos	Part No	Description
1	014803	HOB SUPPLY PIPE
2	011833	TEE - 3/4"
3	013473	NIPPLE
4	011853	REGULATOR (NATURAL GAS ONLY)
5	012048	REDUCING BUSH - 3/8" x 3/4"
6	011003	CONNECTOR - 1/2" x 3/8"
7	011002	CONE NUT
8	011827	MACK UNION
9	004147	MANIFOLD RN8610GC
	004148	MANIFOLD RN8810GC
10	011148	PLUG - 1/4"
11	013215	BACKNUT - 1/4" BSP
12	032130	GRIDDLE INJECTOR Ø1.30 mm - LPG
	032210	GRIDDLE INJECTOR Ø2.10 mm - NATURAL GAS
13	011634	PILOT ELBOW (UP TO S/N 278399)
		(NOT AVAILABLE REFER ITEM 15, 016518)
	026022	PILOT ELBOW (FROM S/N 278400)
		(NOT AVAILABLE REFER ITEM 15, 016518)
14	012918	OUTLET CONNECTOR (NOT AVAILABLE REFER ITEM 15, 016518)
15	016518	GRIDDLE TAP ASSY (ASSEMBLED WITH ITEMS 11,13,14,16)
16	012919	BACKNUT- 5/16" UNF
17	012921	PILOT TUBE ASSEMBLY
18	011287	NUT (PART OF ITEM 23)
19	011286	OLIVE (PART OF ITEM 23)
20	011650	PILOT SPUD - LPG
	011651	PILOT SPUD - NATURAL
21	012916	THERMOCOUPLE - 300 mm
22	-----	THERMOCOUPLE NUTS (PART OF ITEM 21)
23	012699K	GRIDDLE PILOT BURNER KIT (ASSEMBLED WITH ITEMS 18,19,20)
24	013801	PIEZO ELECTRODE
25	011741	PRESSURE ADAPTOR
26	011337	PRESSURE TEST POINT
27	034130	OPEN BURNER INJECTOR Ø1.30 mm - LPG
	034210	OPEN BURNER INJECTOR Ø2.10 mm - NATURAL GAS
28	020639	GAS TAP (FROM S/N 125327)
	011154	GAS TAP (TO S/N 125326)
29	014801	CONTROL SUPPLY PIPE
30	011747	ELBOW - 3/8" x 1/2"
31	011656	REDUCING BUSH - 3/8" x 1/2"
32	019454	SOLENOID VALVE
33	013235	NIPPLE - 1/2"
34	018350	ELBOW - 1/2"
35	013153	FLAME FAILURE CONTROL
36	013836	ELBOW - 1/8" X 1/4"
37	013190	PILOT SUPPLY TUBE
38	012250	OVEN SUPPLY TUBE
39	011742	CONNECTOR - 1/8" x 1/4"
40	013184	CLAMP BRACKET
41	011634	ELBOW - 1/8"
42	013155	BALL VALVE
43	012753	CONNECTOR - 1/8" x 1/4"
44	013182	SAFETY MOUNTING BRACKET
45	013183	BALL VALVE MOUNTING BRACKET
46	011600	ELBOW - 3/8" x 1/2"
47	011601	REDUCING BUSH - 3/8" x 1/8"
48	032150	OVEN INJECTOR Ø1.50mm - LPG
	032230	OVEN INJECTOR Ø2.30mm - NATURAL GAS
49	013263	OVEN PILOT SUPPLY TUBE

50	012248	OVEN BURNER
51	012608	PILOT BRACKET
52	018347	IGNITION ELECTRODE - OVEN
	018252	ELECTRODE / HT LEAD ASSEMBLY (NOT ILLUSTRATED)
53	012331K	OVEN PILOT BURNER KIT
	011650	PILOT SPUD - LPG
	011651	PILOT SPUD - NATURAL
54	004154	PILOT SPACER
55	011771	THERMOCOUPLE

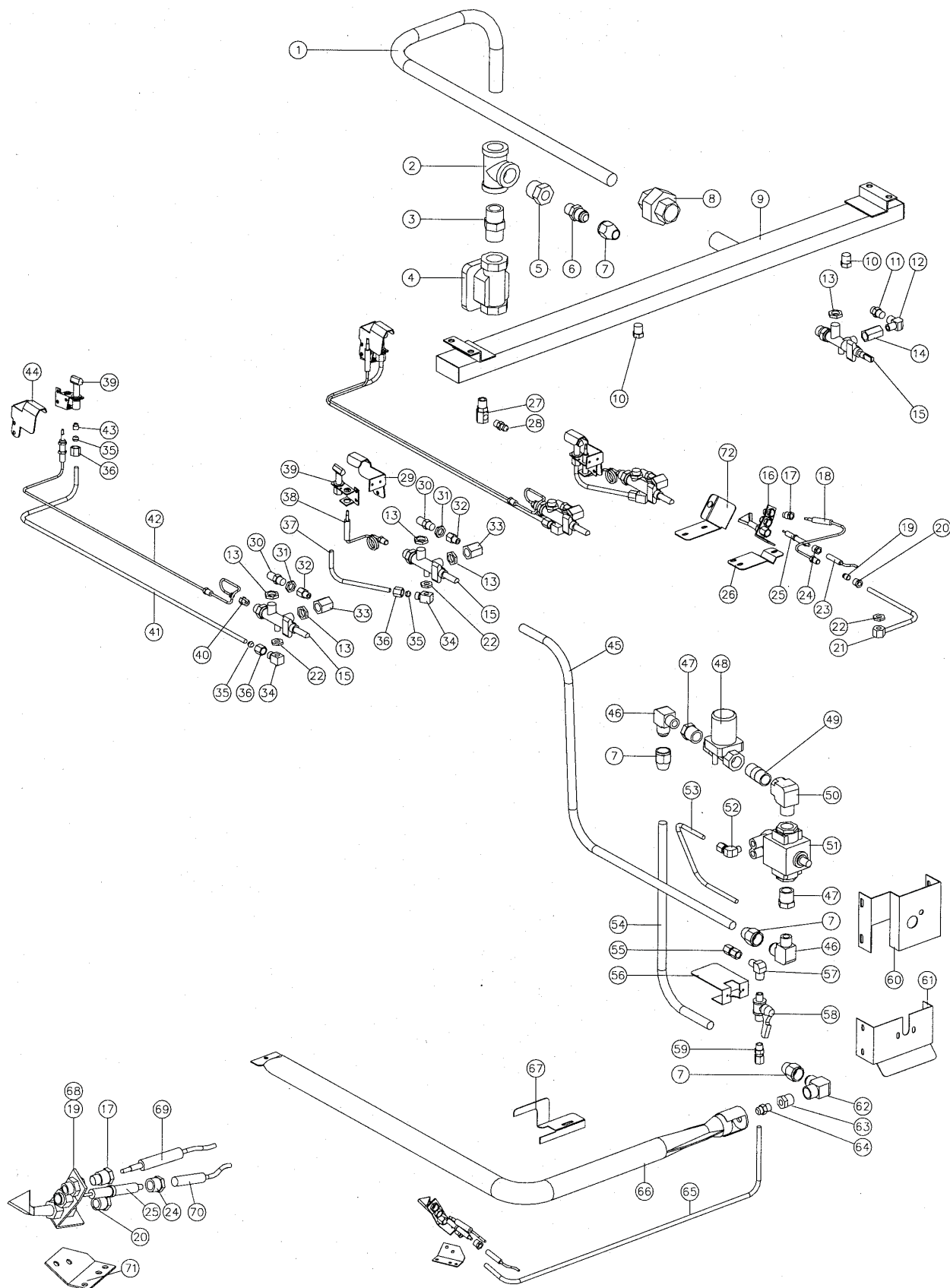
11.3.1 RN8610GC / RN8810GC Gas Piping Assembly (FFP) - From S/N 224660



Pos	Part No	Description
1	014803	HOB SUPPLY PIPE
2	011833	TEE - 3/4"
3	013473	NIPPLE
4	011853	REGULATOR (NATURAL GAS ONLY)
5	012048	REDUCING BUSH - 3/8" x 3/4"
6	011827	MACK UNION
7	004147	MANIFOLD RN8610GC
	004148	MANIFOLD RN8810GC
8	011148	PLUG - 1/4"
9	013215	BACKNUT - 1/4" BSP
10	032130	GRIDDLE INJECTOR Ø1.30 mm - LPG
	032210	GRIDDLE INJECTOR Ø2.10 mm - NATURAL GAS
11	011634	PILOT ELBOW (UP TO S/N 278399) (NOT AVAILABLE REFER ITEM 13, 016518)
	026022	PILOT ELBOW (FROM S/N 278400) (NOT AVAILABLE REFER ITEM 13, 016518)
12	012918	OUTLET CONNECTOR (NOT AVAILABLE REFER ITEM 13, 016518)
13	016518	GRIDDLE TAP ASSEMBLY (INCLUDES ITEMS 9,11,12,20)
	017611	OPEN BURNER TAP ASSEMBLY (INCLUDES ITEMS 9,20,31)
14	019215K	GRIDDLE PILOT BURNER KIT (INCLUDES ITEMS 15,17,18,22,23)
15	018741	CLAMP NUT
16	019428	THERMOCOUPLE - GRIDDLE
	019575	M10 THERMOCOUPLE SPLIT NUT
17	018692	PILOT INJECTOR Ø0.20mm - LP GAS
	018693	PILOT INJECTOR Ø0.32mm - NATURAL GAS
18	018740	COMPRESSION NUT 1/4"
	018739	OLIVE
19	020656	GRIDDLE PILOT SUPPLY TUBE
20	012919	BACKNUT
21	018095	HIGH TENSION LEAD
22	018742	ELECTRODE NUT
23	018744	PILOT ELECTRODE
24	019425	GRIDDLE PILOT BRACKET
25	011741	PRESSURE ADAPTOR
26	019371	PRESSURE TEST POINT
27	017607	PILOT SHROUD - FRONT
28	034130	OPEN BURNER INJECTOR Ø1.30 mm - LPG
	034210	OPEN BURNER INJECTOR Ø2.10 mm - NATURAL GAS
29	011740	JET BACKNUT
30	017613	ADAPTOR - 1/8" BSP M/F (NOT AVAILABLE, REFER TO ITEM 13, 017611)
31	017612	INJECTOR ELBOW (UP TO S/N 278399)(NOT AVAILABLE, REFER TO ITEM 13, 017611)
	026023	INJECTOR ELBOW (FROM S/N 278400)(NOT AVAILABLE, REFER TO ITEM 13, 017611)
32	017079	PILOT OUTLET FITTING
33	011286	OLIVE
34	011287	NUT
35	017614	PILOT TUBE FRONT
36	012916	THERMOCOUPLE - 300 mm
	024573	THERMOCOUPLE LOCK-NUT (NOT ILLUSTRATED)
37	013000K	PILOT BURNER KIT (INCLUDES ITEM 41)
38	019575	THERMOCOUPLE SPLIT NUT
39	017615	PILOT TUBE REAR
40	017617	THERMOCOUPLE - 750 mm
	024573	THERMOCOUPLE LOCK-NUT (NOT ILLUSTRATED)
41	011650	PILOT SPUD - LPG
	011651	PILOT SPUD - NATURAL

42	017608	PILOT SHROUD - REAR
43	013837	CONNECTOR
44	024136	CONTROL SUPPLY PIPE
45	024133	CONTROL MOUNTING BRACKET
46	020064	GAS VALVE BRACKET
47	014408	CONNECTOR
48	020103K	GAS CONTROL KIT (INCLUDES ITEM 69)
49	022689	INJECTOR CONNECTOR
50	022686	¼" SS FLEXI PIPE
51	021288	CONNECTOR
52	024142	ELBOW – 3/8" BSP FF
53	011601	REDUCING BUSH
54	032150	OVEN INJECTOR Ø1.50mm - LPG
	032250	OVEN INJECTOR Ø2.50mm - NATURAL GAS
55	012248	OVEN BURNER
56	022248	BURNER RETAINING BRACKET
57	024137	PILOT SUPPLY TUBE
58	012753	CONNECTOR – 1/8" x 1/4"
59	018691K	OVEN PILOT BURNER KIT (INCLUDES ITEMS 60,61,64,65,66)
60	018692	PILOT INJECTOR Ø0.20mm - LPG
	018693	PILOT INJECTOR Ø0.32mm - NATURAL GAS
61	018741	CLAMP NUT
62	019429	THERMOCOUPLE – 850mm
63	019407	HIGH TENSION LEAD
64	018742	ELECTRODE NUT
65	018744	PILOT ELECTRODE
66	018740	COMPRESSION NUT ¼"
	018739	OLIVE
67	024267	OVEN PILOT BRACKET
68	023863	GRIDDLE PILOT DRAFT BAFFLE
69	018096	REGULATOR KNOCK-OUT PIN (ALL GASES)

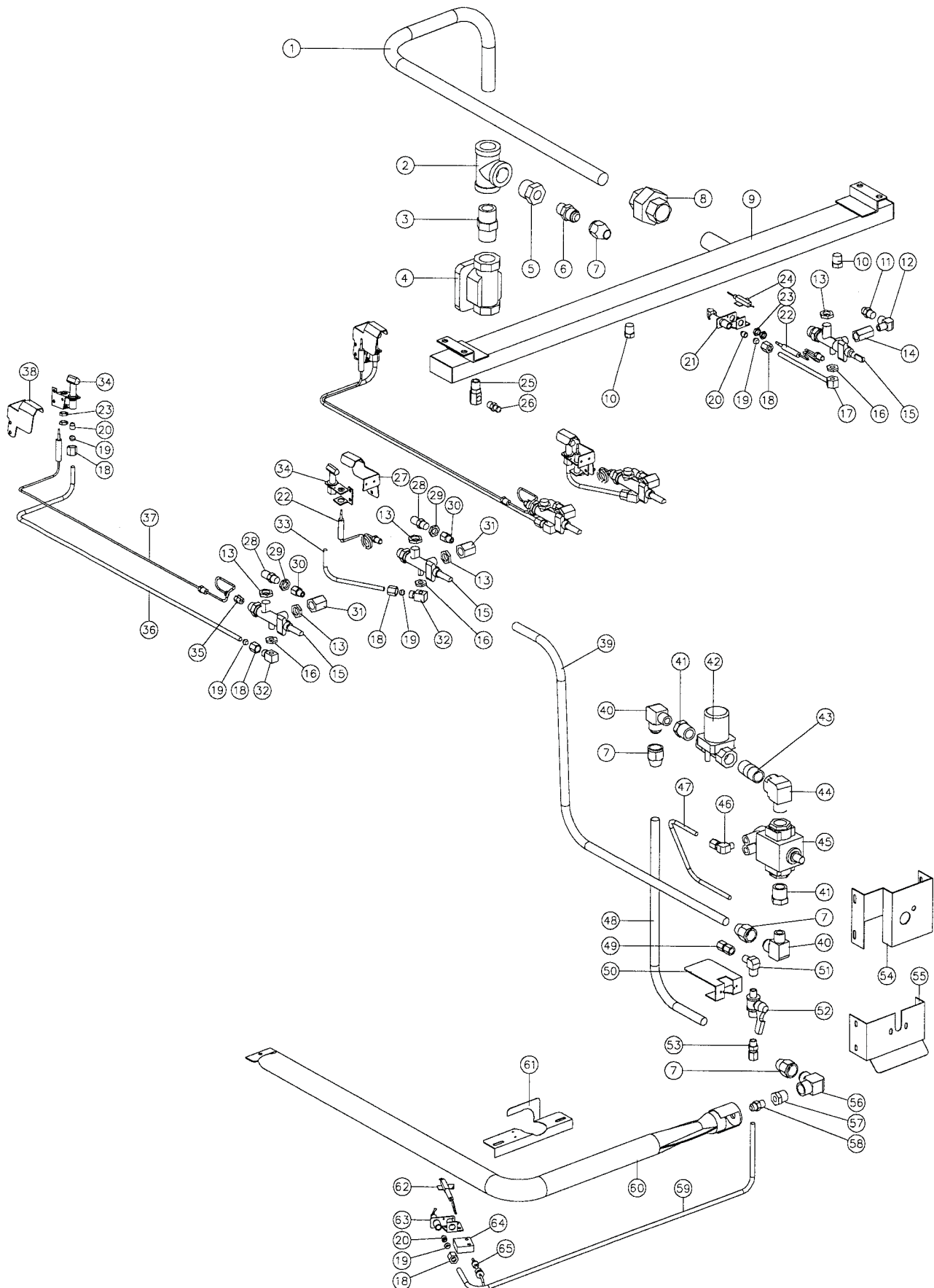
11.3.2 RN8610GC / RN8810GC Gas Piping Assembly (FFP) - From S/N 31201 to 224659



Pos	Part No	Description
1	014803	HOB SUPPLY PIPE
2	011833	TEE - 3/4"
3	013473	NIPPLE
4	011853	REGULATOR (NATURAL GAS ONLY)
5	012048	REDUCING BUSH - 3/8" x 3/4"
6	011003	CONNECTOR - 1/2" x 3/8"
7	011002	CONE NUT
8	011827	MACK UNION
9	004147	MANIFOLD RN8610GC
	004148	MANIFOLD RN8810GC
10	011148	PLUG - 1/4"
11	013215	BACKNUT - 1/4" BSP
12	032130	GRIDDLE INJECTOR Ø1.30 mm - LPG
	032210	GRIDDLE INJECTOR Ø2.10 mm - NATURAL GAS
13	011634	PILOT ELBOW (UP TO S/N 278399) (NOT AVAILABLE REFER ITEM 15, 016518)
	026022	PILOT ELBOW (FROM S/N 278400) (NOT AVAILABLE REFER ITEM 15, 016518)
14	012918	OUTLET CONNECTOR (NOT AVAILABLE REFER ITEM 15, 016518)
15	016518	GRIDDLE TAP ASSEMBLY (INCLUDES ITEMS 11,13,14,22)
	017611	OPEN BURNER TAP ASSEMBLY (INCLUDES ITEMS 11,22,33)
16	019215K	GRIDDLE PILOT BURNER KIT (INCLUDES ITEMS 17,19,20,24,25)
17	018741	CLAMP NUT
18	019428	THERMOCOUPLE - GRIDDLE
	019575	M10 THERMOCOUPLE SPLIT NUT
19	018692	PILOT INJECTOR Ø0.20mm - LP GAS
	018693	PILOT INJECTOR Ø0.32mm - NATURAL GAS
20	018740	COMPRESSION NUT 1/4"
	018739	OLIVE
21	020656	GRIDDLE PILOT SUPPLY TUBE
22	012919	BACKNUT
23	018095	HIGH TENSION LEAD
24	018742	ELECTRODE NUT
25	018744	PILOT ELECTRODE
26	019425	GRIDDLE PILOT BRACKET
27	011741	PRESSURE ADAPTOR
28	019371	PRESSURE TEST POINT
29	017607	PILOT SHROUD - FRONT
30	034130	OPEN BURNER INJECTOR Ø1.30 mm - LPG
	034210	OPEN BURNER INJECTOR Ø2.10 mm - NATURAL GAS
31	011740	JET BACKNUT
32	017613	ADAPTOR - 1/8" BSP M/F (NOT AVAILABLE, REFER TO ITEM 15, 017611)
33	017612	INJECTOR ELBOW (UP TO S/N 278399)(NOT AVAILABLE, REFER TO ITEM 15, 017611)
	026023	INJECTOR ELBOW (FROM S/N 278400)(NOT AVAILABLE, REFER TO ITEM 15, 017611)
34	017079	PILOT OUTLET FITTING
35	011286	OLIVE
36	011287	NUT
37	017614	PILOT TUBE FRONT
38	012916	THERMOCOUPLE - 300 mm
	024573	THERMOCOUPLE LOCK-NUT (NOT ILLUSTRATED)
39	013000K	PILOT BURNER KIT (INCLUDES ITEM 43)
40	019575	THERMOCOUPLE SPLIT NUT
41	017615	PILOT TUBE REAR
42	017617	THERMOCOUPLE - 750 mm
	024573	THERMOCOUPLE LOCK-NUT (NOT ILLUSTRATED)

43	011650	PILOT SPUD - LPG
	011651	PILOT SPUD - NATURAL
44	017608	PILOT SHROUD - REAR
45	014801	CONTROL SUPPLY PIPE
46	011747	ELBOW - 3/8" x 1/2"
47	011656	REDUCING BUSH - 3/8" x 1/2"
48	019454	SOLENOID VALVE
49	013235	NIPPLE - 1/2"
50	018350	ELBOW - 1/2"
51	013153	FLAME FAILURE CONTROL
52	013836	ELBOW - 1/8" X 1/4"
53	013190	PILOT SUPPLY TUBE
54	012250	OVEN SUPPLY TUBE
55	011742	CONNECTOR - 1/8" x 1/4"
56	013184	CLAMP BRACKET
57	011634	ELBOW - 1/8"
58	013155	BALL VALVE
59	012753	CONNECTOR - 1/8" x 1/4"
60	013182	SAFETY MOUNTING BRACKET
61	013183	BALL VALVE MOUNTING BRACKET
62	011600	ELBOW - 3/8" x 1/2"
63	011601	REDUCING BUSH - 3/8" x 1/8"
64	032150	OVEN INJECTOR Ø1.50mm - LPG
	032230	OVEN INJECTOR Ø2.30mm - NATURAL GAS
65	019445	OVEN PILOT SUPPLY TUBE
66	012248	OVEN BURNER
67	022248	BURNER RETAINING BRACKET
68	018691K	OVEN PILOT BURNER KIT (INCLUDES ITEMS 17,19,20,24,25)
69	020253	THERMOCOUPLE- 1200mm
70	019407	HIGH TENSION LEAD
71	019330	OVEN PILOT BRACKET
72	023863	GRIDDLE PILOT DRAFT BAFFLE (FROM S/N 215176)

11.3.3 RN8610GC / RN8810GC Gas Piping Assembly (FFP) - To S/N 31200



Pos	Part No	Description
1	014803	HOB SUPPLY PIPE
2	011833	TEE - 3/4"
3	013473	NIPPLE
4	011853	REGULATOR (NATURAL GAS ONLY)
5	012048	REDUCING BUSH - 3/8" x 3/4"
6	011003	CONNECTOR - 1/2" x 3/8"
7	011002	CONE NUT
8	011827	MACK UNION
9	004480	MANIFOLD RN8610GC
	004481	MANIFOLD RN8810GC
10	011148	PLUG - 1/4"
11	032130	GRIDDLE INJECTOR Ø1.30 mm - LPG
	032210	GRIDDLE INJECTOR Ø2.10 mm - NATURAL GAS
12	011634	PILOT ELBOW (UP TO S/N 278399) (NOT AVAILABLE REFER ITEM 15, 016518)
	026022	PILOT ELBOW (FROM S/N 278400) (NOT AVAILABLE REFER ITEM 15, 016518)
13	013215	BACKNUT - 1/4" BSP
14	012918	OUTLET CONNECTOR (NOT AVAILABLE REFER ITEM 15, 016518)
15	016518	GRIDDLE TAP ASSY (ASSEMBLED WITH ITEMS 12,13,14,16)
	017611	OPEN BURNER TAP ASSEMBLY (INCLUDES ITEMS 12,15,31)
16	012919	BACKNUT- 5/16" UNF
17	012921	PILOT TUBE ASSEMBLY
18	011287	NUT (PART OF ITEM 21,63)
19	011286	OLIVE (PART OF ITEM 21,63)
20	011650	PILOT SPUD - LPG
	011651	PILOT SPUD - NATURAL
21	012699K	GRIDDLE PILOT BURNER KIT (ASSEMBLED WITH ITEMS 18,19,20)
22	012916	THERMOCOUPLE - 300 mm
23	024573	THERMOCOUPLE LOCK-NUT
24	013801	PIEZO ELECTRODE
25	011741	PRESSURE ADAPTOR
26	011337	PRESSURE TEST POINT
27	017607	PILOT SHROUD - FRONT
28	034130	OPEN BURNER INJECTOR Ø1.30 mm - LPG
	034210	OPEN BURNER INJECTOR Ø2.10 mm - NATURAL GAS
29	011740	JET BACKNUT
30	017613	ADAPTOR - 1/8" BSP M/F (NOT AVAILABLE, REFER TO ITEM 15, 017611)
31	017612	INJECTOR ELBOW (UP TO S/N 278399)(NOT AVAILABLE, REFER TO ITEM 15, 017611)
	026023	INJECTOR ELBOW (FROM S/N 278400)(NOT AVAILABLE, REFER TO ITEM 15, 017611)
32	017079	PILOT OUTLET FITTING
33	017614	PILOT TUBE FRONT
34	013000K	PILOT BURNER KIT (USES ITEM 20 PILOT SPUDS)
35	019575	THERMOCOUPLE SPLIT NUT
36	017615	PILOT TUBE REAR
37	017617	THERMOCOUPLE - 750 mm
	024573	THERMOCOUPLE LOCK-NUT (NOT ILLUSTRATED)
38	017608	PILOT SHROUD - REAR
39	014801	CONTROL SUPPLY PIPE
40	011747	ELBOW - 3/8" x 1/2"
41	011656	REDUCING BUSH - 3/8" x 1/2"
42	019454	SOLENOID VALVE
43	013235	NIPPLE - 1/2"
44	018350	ELBOW - 1/2"
45	013153	FLAME FAILURE CONTROL

46	013836	ELBOW - 1/8" X 1/4"
47	013190	PILOT SUPPLY TUBE
48	012250	OVEN SUPPLY TUBE
49	011742	CONNECTOR - 1/8" x 1/4"
50	013184	CLAMP BRACKET
51	011634	ELBOW - 1/8"
52	013155	BALL VALVE
53	012753	CONNECTOR - 1/8" x 1/4"
54	013182	SAFETY MOUNTING BRACKET
55	013183	BALL VALVE MOUNTING BRACKET
56	011600	ELBOW - 3/8" x 1/2"
57	011601	REDUCING BUSH - 3/8" x 1/8"
58	032150	OVEN INJECTOR Ø1.50mm - PROPANE GAS
	032230	OVEN INJECTOR Ø2.30mm - NATURAL GAS
59	013263	OVEN PILOT SUPPLY TUBE
60	012248	OVEN BURNER
61	012608	PILOT BRACKET
62	018347	IGNITOR ELECTRODE - OVEN
	018252	ELECTRODE / HT LEAD ASSEMBLY (NOT ILLUSTRATED)
63	012331K	OVEN PILOT BURNER KIT (USES ITEM 20 PILOT SPUDS)
64	004154	PILOT SPACER
65	011771	THERMOCOUPLE