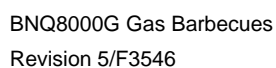


8.1.1 MAIN ASSEMBLY BQN8600G FROM SERIAL NUMBER 26932

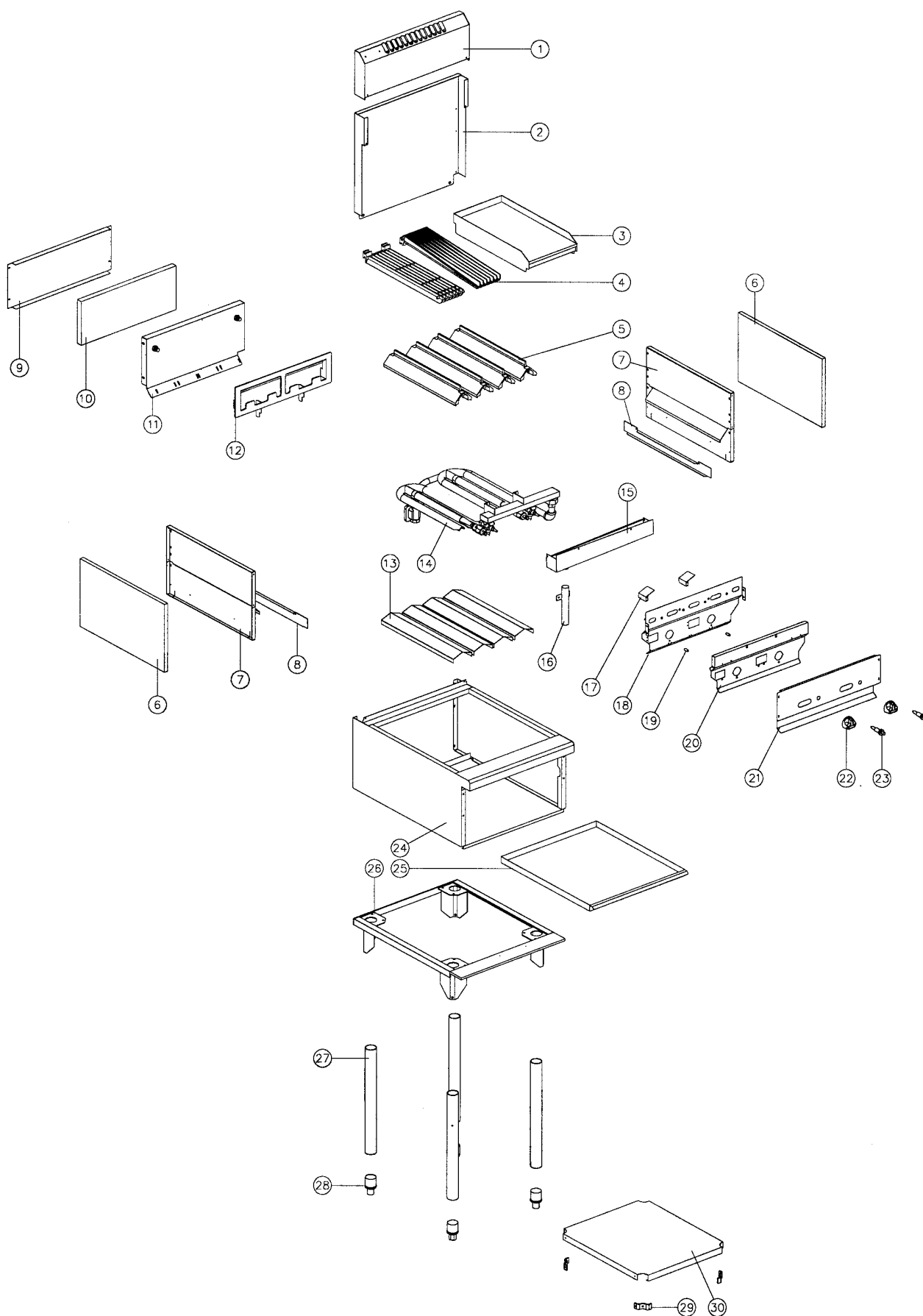


Pos	Part No.	Description
1	014222	SPLASHBACK
2	014506	HOB BACK PANEL
3	017230	GRIDDLE (BQN8603G ONLY)
4	014509	CASTING - BARBEQUE
5	014508	CASTING - RADIANT
6	090415	INSULATION
7	019465	BURNER BOX SIDE
8	014538	DRIP TRAY RUNNER
9	014550	REAR INSULATION PANEL
10	090415	INSULATION
11	014545	BURNER BOX REAR
12	014597	REAR CASTING SUPPORT
13	014552	BURNER SUPPORT
14	-----	GAS ASSEMBLY (SEE SECTION 8.2.1)
15	019613	DRAIN TROUGH
16	019606	DRAIN TUBE EXTENSION
17	019592	PILOT HOOD
18	019469	BURNER BOX FRONT
19	016245	SPACER
20	019473	BURNER BOX RADIATION PANEL
21	004526	CONTROL PANEL
22	014299	KNOB ASSEMBLY
23	020119	PIEZO IGNITOR
24	014412	HOB
25	014537	DRIP TRAY
26	004160	CHASSIS
27	014521	LEG TUBE
	014519	ADJUSTABLE LEG ASSEMBLY
28	010990	ADJUSTABLE FOOT (PART OF 014519)
29	013708	LEG TRAY BRACKET
30	014361	LEG TRAY

GAS CONVERSIONS

022915	NAT -> LPG (from S/N 26932)
022910	LPG -> NAT (from S/N 26932)

8.1.2 MAIN ASSEMBLY BQN8600G FROM SERIAL NUMBER 23930 to 26931



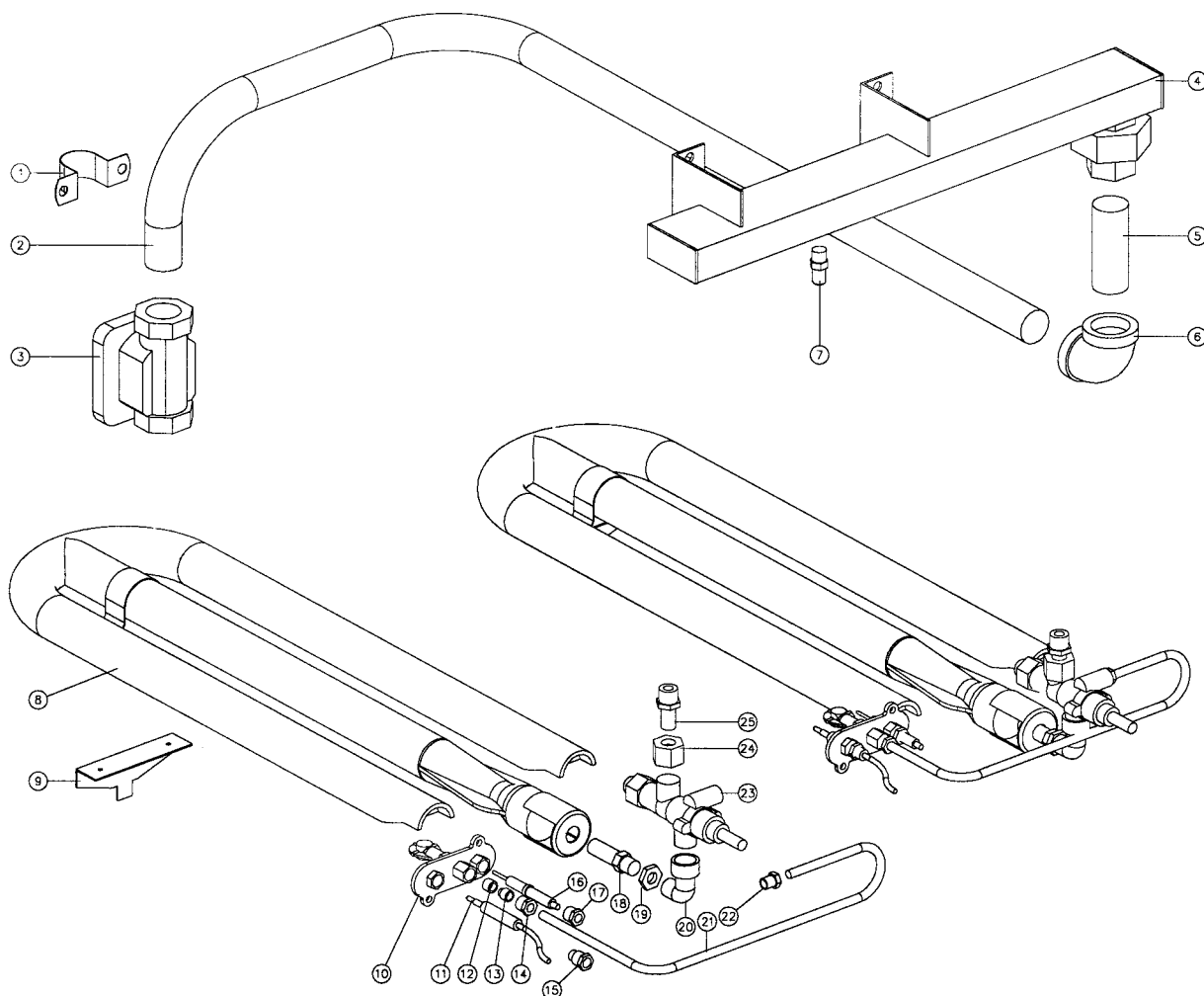
Pos	Part No.	Description
1	014222	SPLASHBACK
2	014506	HOB BACK PANEL
3	017230	GRIDDLE (BQN8603G ONLY)
4	014509	CASTING - BARBEQUE
5	014508	CASTING - RADIANT
6	090415	INSULATION
7	014573	BURNER BOX SIDE
8	014538	DRIP TRAY RUNNER
9	014550	REAR INSULATION PANEL
10	090415	INSULATION
11	014545	BURNER BOX REAR
12	014597	REAR CASTING SUPPORT
13	014552	BURNER SUPPORT
14	-----	GAS ASSEMBLY (SEE SECTION 8.2.2)
15	017916	DRAIN TROUGH
16	014604	DRAIN TUBE EXTENSION
17	017902	PILOT HOOD
18	017898	BURNER BOX FRONT
19	016245	SPACER
20	017896	BURNER BOX RADIATION PANEL
21	004526	CONTROL PANEL
22	014299	KNOB ASSEMBLY
23	020119	PIEZO IGNITOR
24	014412	HOB
25	014537	DRIP TRAY
26	004160	CHASSIS
27	014521	LEG TUBE
	014519	LEG TUBE ASSEMBLY
28	010990	ADJUSTABLE FOOT (PART OF 014519)
29	013708	LEG TRAY BRACKET
30	014361	LEG TRAY

GAS CONVERSIONS

017924	NAT -> LPG (from S/N 23930 to S/N 26931)
017923	LPG -> NAT (from S/N 23930 to S/N 26931)
014912	NAT -> LPG (from S/N 22517 to S/N 23929)
014915	LPG -> NAT (from S/N 22517 to S/N 23929)

8.2 BQN8600G GAS PIPING ASSEMBLY

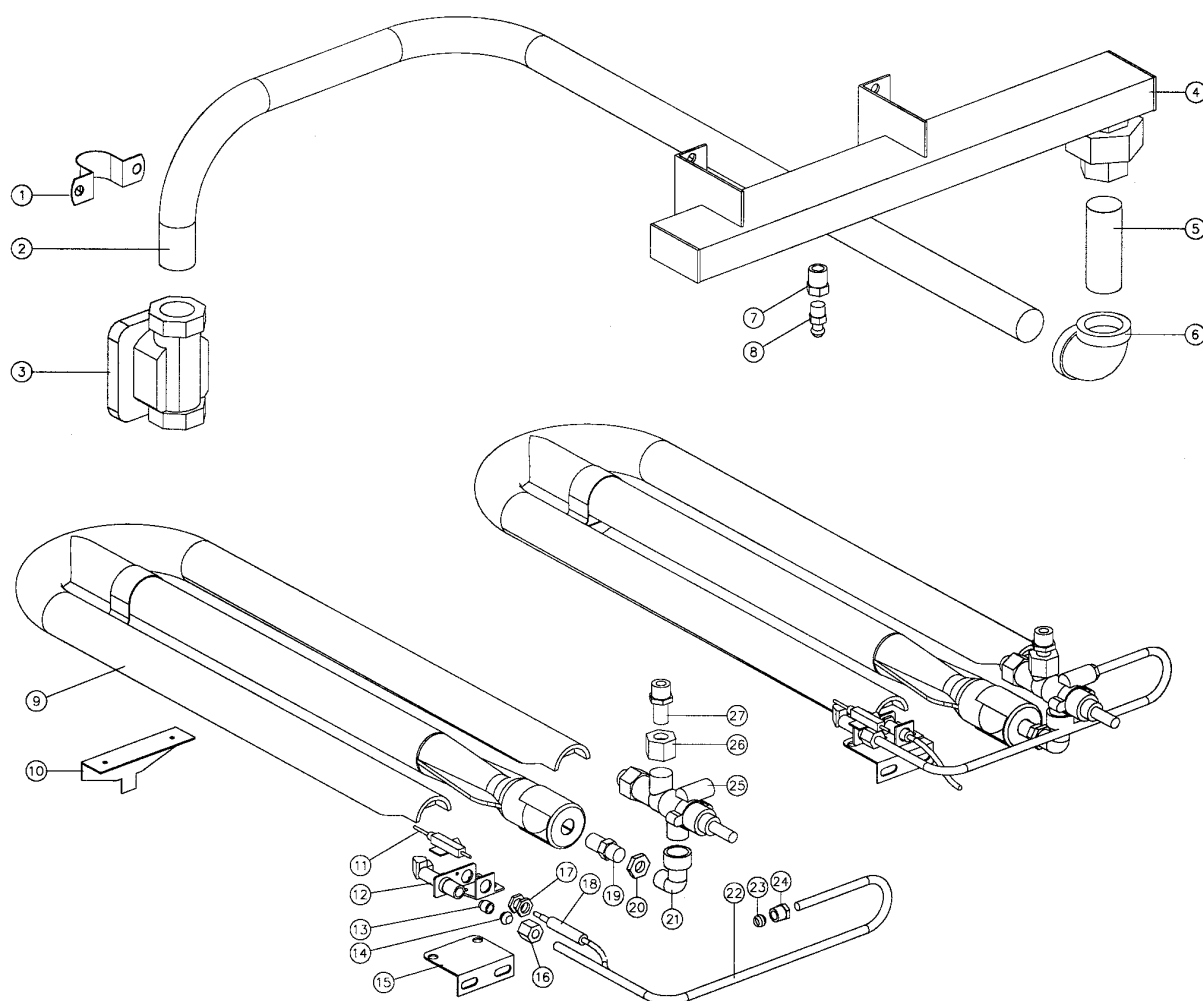
8.2.1 GAS ASSEMBLY BQN8600G FROM SERIAL NUMBER 26932



Pos	Part No.	Description
1	010023	SADDLE CLAMP
2	016777	SUPPLY PIPE
3	011853	REGULATOR - NATURAL GAS ONLY
4	004631	MANIFOLD
5	012436	NIPPLE
6	011830	ELBOW
7	019220	PRESSURE TEST POINT
8	011310	BURNER
9	014553	BURNER SUPPORT BRACKET
10	019464K	PILOT BURNER KIT (INCLUDES ITEMS 12,13,14,15,16,17)
11	019218	THERMOCOUPLE
12	019593	PILOT INJECTOR Ø0.41mm - NATURAL GAS (INCLUDED WITH ITEM 10)
	019594	PILOT INJECTOR Ø0.25mm - LPG (INCLUDED WITH ITEM 10)
13	019487	PILOT OLIVE (INCLUDED WITH ITEM 10)
14	018740	COMPRESSION NUT (INCLUDED WITH ITEM 10)
15	018741	CLAMP NUT (INCLUDED WITH ITEM 10)
16	019624	PILOT ELECTRODE (INCLUDED WITH ITEM 10)
	018095	HT LEAD (NOT ILLUSTRATED)
17	018742	ELECTRODE NUT (INCLUDED WITH ITEM 10)

18	031260	INJECTOR Ø2.60mm - NATURAL GAS
	031160	INJECTOR Ø1.60mm - LPG
19	011740	INJECTOR BACKNUT
20	018359	OUTLET ELBOW (INCLUDED WITH ITEM 23)
21	017889	PILOT SUPPLY TUBE
22	017805	COMPRESSION NUT
	017806	OLIVE (NOT ILLUSTRATED)
23	017801	GAS CONTROL
24	017804	COMPRESSION NUT
	017803	OLIVE (NOT ILLUSTRATED)
25	017802	INLET SPIGOT

8.2.2 GAS ASSEMBLY BQN8600G FROM SERIAL NUMBER 23930 to 26931



Pos	Part No.	Description
1	010023	SADDLE CLAMP
2	016777	SUPPLY PIPE
3	011853	REGULATOR - NATURAL GAS ONLY
4	004522	MANIFOLD
5	012436	NIPPLE - 2½"
6	011830	ELBOW
7	011147	REDUCING BUSH
8	019220	PRESSURE TEST POINT
9	011310	BURNER
10	014553	BURNER SUPPORT BRACKET
11	013801	IGNITOR ELECTRODE
	016512	HT LEAD (NOT ILLUSTRATED)
	090118	SLEEVE - 230 mm (NOT ILLUSTRATED)
12	012699K	PILOT BURNER KIT (INCLUDES ITEMS 13,14,16)
13	011650	PILOT SPUD Ø0.010" - LPG (INCLUDED WITH ITEM 12)
	011651	PILOT SPUD Ø0.018" - NATURAL GAS (INCLUDED WITH ITEM 12)
14	011286	OLIVE - 1/4" (INCLUDED WITH ITEM 12)
15	017899	PILOT MOUNTING BRACKET
16	011287	NUT - 1/4" (INCLUDED WITH ITEM 12)
17	013215	THERMOCOUPLE CLAMP NUT
18	013848	THERMOCOUPLE
19	034165	MAIN INJECTOR Ø1.65 mm - LPG
	034260	MAIN INJECTOR Ø2.60 mm - NATURAL GAS

20	011740	INJECTOR BACKNUT
21	018359	OUTLET ELBOW (INCLUDED WITH ITEM 25)
22	017889	PILOT SUPPLY TUBE
23	017806	OLIVE - GAS CONTROL
24	017805	NUT - GAS CONTROL
25	017801	GAS CONTROL
26	017804	NUT - 10 mm
	017803	OLIVE - 10 mm (NOT ILLUSTRATED)
27	017802	INLET SPIGOT

8.3.1 MAIN ASSEMBLY BQN8900G FROM SERIAL NUMBER 26932

This exploded view diagram illustrates the assembly of a kitchen cabinet. The components are numbered 1 through 32. The assembly process typically involves the following steps:

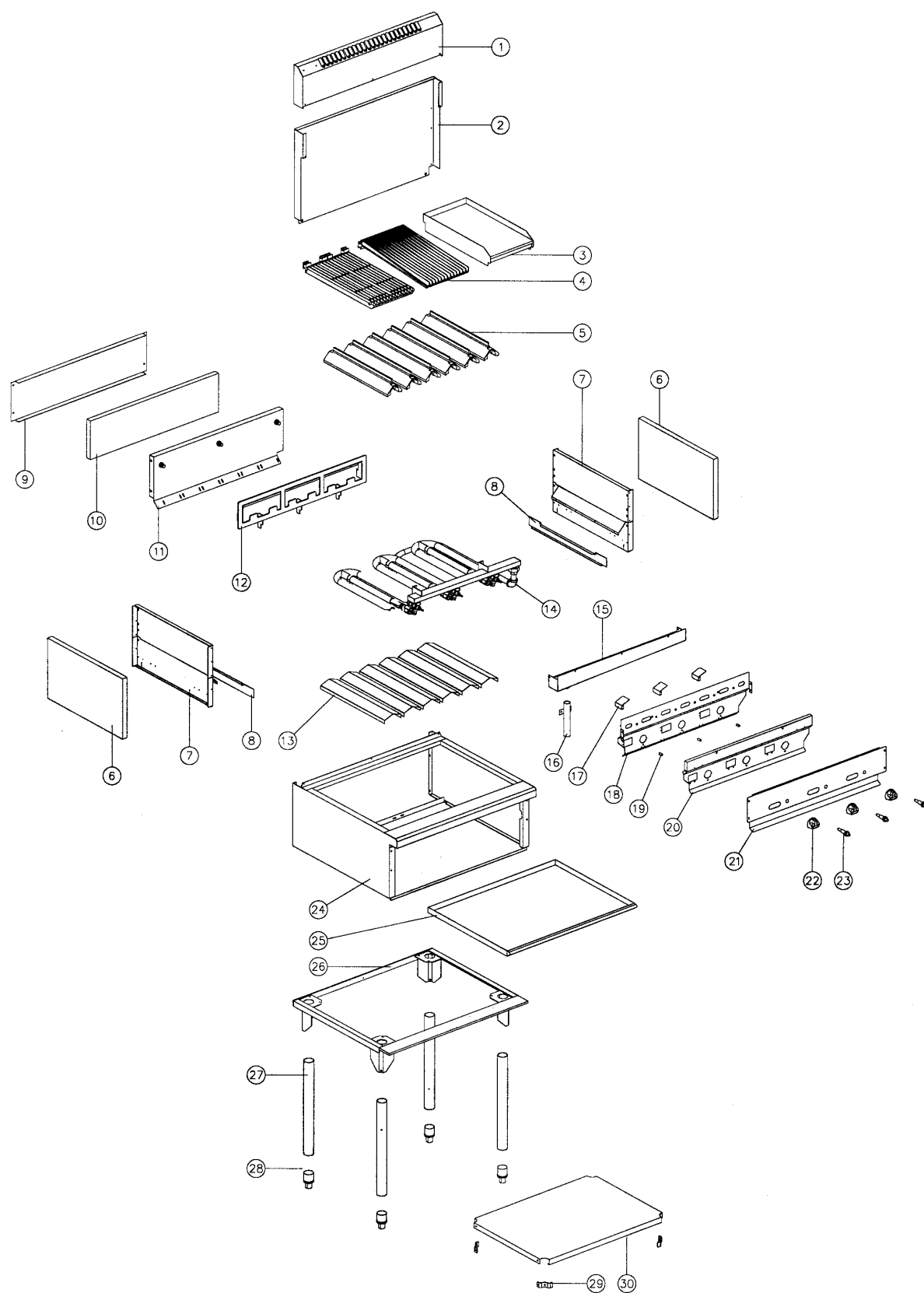
- Top Panel (1)** and **Back Panel (2)** are the main upper components.
- Drawer Fronts (3, 4)** and **Drawer Slats (5)** are prepared for the drawers.
- Side Panels (6)** and **Drawer Fronts (7)** are attached to the sides.
- Drawer Slats (8, 9)** are installed into the drawer fronts.
- Drawer Slats (10, 11)** are installed into the drawer fronts.
- Drawer Slats (12, 13)** are installed into the drawer fronts.
- Drawer Slats (14, 15)** are installed into the drawer fronts.
- Drawer Slats (16, 17)** are installed into the drawer fronts.
- Drawer Slats (18, 19)** are installed into the drawer fronts.
- Drawer Slats (20, 21)** are installed into the drawer fronts.
- Drawer Slats (22, 23)** are installed into the drawer fronts.
- Drawer Slats (24, 25)** are installed into the drawer fronts.
- Drawer Slats (26, 27)** are installed into the drawer fronts.
- Drawer Slats (28, 29)** are installed into the drawer fronts.
- Drawer Slats (30, 31)** are installed into the drawer fronts.
- Drawer Slats (32)** are installed into the drawer fronts.

Pos	Part No.	Description
1	014220	SPLASHBACK
2	014507	HOB BACK PANEL
3	017230	GRIDDLE (BQN8903G ONLY)
	017684	GRIDDLE (BQN8904G ONLY)
4	014509	CASTING - BARBEQUE
5	014508	CASTING - RADIANT
6	090415	INSULATION
7	019467	BURNER BOX SIDE
8	019467	BURNER BOX SIDE
9	014538	DRIP TRAY RUNNERS
10	014551	REAR INSULATION PANEL
11	090415	INSULATION
12	014547	BURNER BOX REAR
13	014598	REAR CASTING SUPPORT
14	014552	BURNER SUPPORT
15	-----	GAS ASSEMBLY (SEE SECTION 8.4.1)
16	019615	DRAIN TROUGH
17	019610	BURNER BOX BRACE
18	019606	DRAIN TUBE EXTENSION
19	019592	PILOT HOOD
20	019471	BURNER BOX FRONT
21	016245	SPACER
22	019474	BURNER BOX RADIATION PANEL
23	004527	CONTROL PANEL
24	014299	CONTROL KNOB
25	020119	PIEZO IGNITOR
26	014413	HOB
27	014539	DRIP TRAY
28	004161	CHASSIS
29	014521	LEG TUBE - FRONT ADJUSTABLE
	014519	ADJUSTABLE LEG ASSEMBLY (29 & 30 ASSEMBLED)
30	010990	ADJUSTABLE FOOT
31	013708	LEG TRAY BRACKET
32	014362	LEG TRAY

GAS CONVERSIONS

022917	NAT -> LPG (from S/N 26932)
022912	LPG -> NAT (from S/N 26932)

8.3.2 MAIN ASSEMBLY BQN8900G FROM SERIAL NUMBER 23930 to 26931



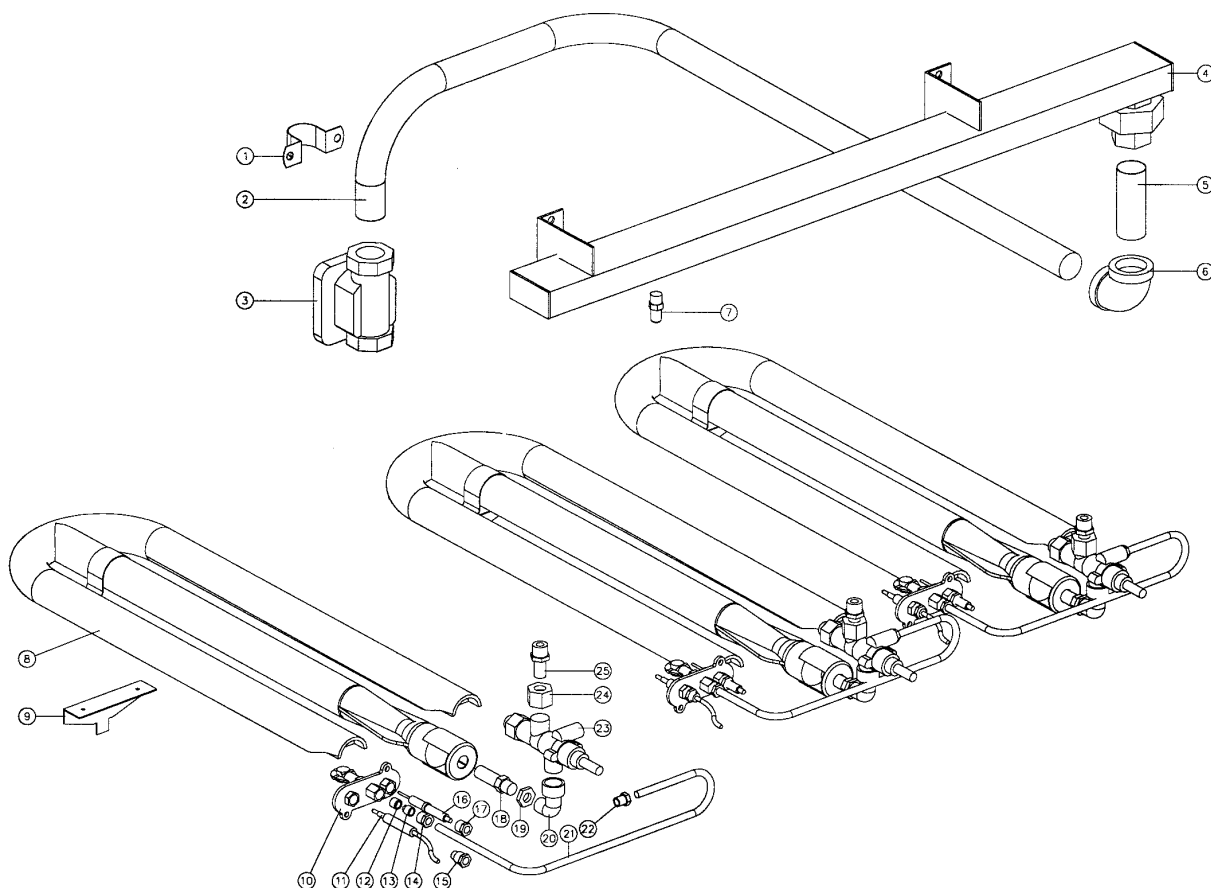
Pos	Part No.	Description
1	014220	SPLASHBACK
2	014507	HOB BACK PANEL
3	017230	GRIDDLE (BQN8903G ONLY)
	017684	GRIDDLE (BQN8904G ONLY)
4	014509	CASTING - BARBEQUE
5	014508	CASTING - RADIANT
6	090415	INSULATION
7	014549	BURNER BOX SIDE
8	014538	DRIP TRAY RUNNER
9	014551	REAR INSULATION PANEL
10	090415	INSULATION
11	014547	BURNER BOX REAR
12	014598	REAR CASTING SUPPORT
13	014552	BURNER SUPPORT
14	-----	GAS ASSEMBLY (SEE SECTION 8.4.2)
15	017915	DRAIN TROUGH
16	014604	DRAIN TUBE EXTENSION
17	017907	PILOT HOOD
18	017918	BURNER BOX FRONT
19	016245	SPACER
20	017895	BURNER BOX RADIATION PANEL
21	004527	CONTROL PANEL
22	014299	CONTROL KNOB
23	020119	PIEZO IGNITOR
24	014413	HOB
25	014539	DRIP TRAY
26	004161	CHASSIS
27	014521	LEG TUBE
	014519	LEG TUBE ASSEMBLY
28	010990	ADJUSTABLE FOOT (PART OF 014519)
29	013708	LEG TRAY BRACKET
30	014362	LEG TRAY

GAS CONVERSIONS

017926	NAT -> LPG (from S/N 23930 to S/N 26931)
017925	LPG -> NAT (from S/N 23930 to S/N 26931)
014913	NAT -> LPG (from S/N 22517 to S/N 23929)
014916	LPG -> NAT (from S/N 22517 to S/N 23929)

8.4 BQN8900G GAS PIPING ASSEMBLY

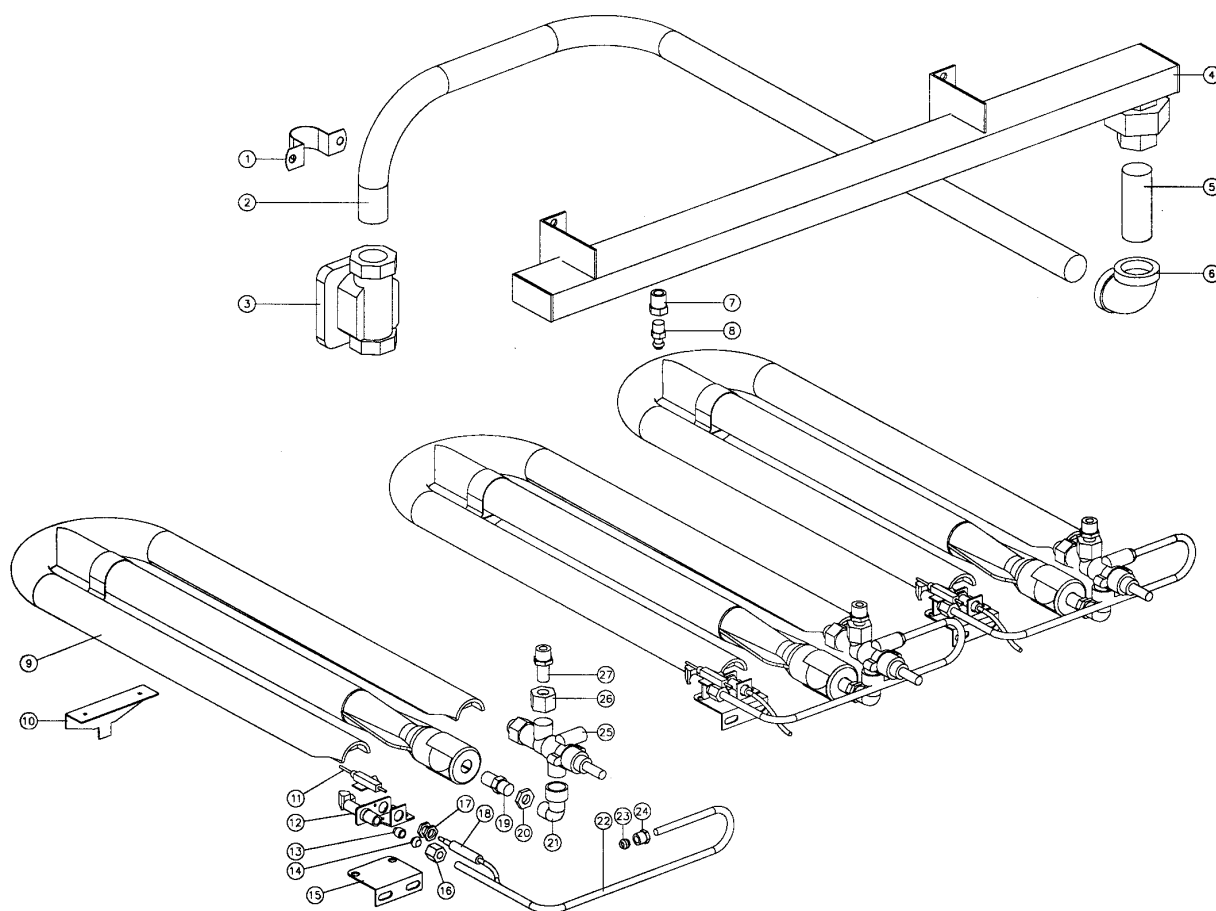
8.4.1 GAS ASSEMBLY BQN8900G FROM SERIAL NUMBER 26932



Pos	Part No.	Description
1	010023	SADDLE CLAMP
2	016777	SUPPLY PIPE
3	011853	REGULATOR - NATURAL GAS ONLY
4	004632	MANIFOLD
5	012436	NIPPLE
6	011830	ELBOW
7	019220	PRESSURE TEST POINT
8	011310	BURNER
9	014553	BURNER SUPPORT BRACKET
10	019464K	PILOT BURNER KIT (INCLUDES ITEMS 12,13,14,15,16,17)
11	019218	THERMOCOUPLE
12	019593	PILOT INJECTOR Ø0.41mm - NATURAL GAS (INCLUDED WITH ITEM 10)
	019594	PILOT INJECTOR Ø0.25mm - LPG (INCLUDED WITH ITEM 10)
13	019487	PILOT OLIVE (INCLUDED WITH ITEM 10)
14	018740	COMPRESSION NUT (INCLUDED WITH ITEM 10)
15	018741	CLAMP NUT (INCLUDED WITH ITEM 10)
16	019624	PILOT ELECTRODE (INCLUDED WITH ITEM 10)
17	018742	ELECTRODE NUT (INCLUDED WITH ITEM 10)
18	031260	INJECTOR Ø2.60mm - NATURAL GAS
	031160	INJECTOR Ø1.60mm - LPG
19	011740	INJECTOR BACKNUT (UP TO S/N 246144)
20	018359	OUTLET ELBOW (INCLUDED WITH ITEM 23)
21	017889	PILOT SUPPLY TUBE

22	017805	COMPRESSION NUT
	017806	OLIVE (NOT ILLUSTRATED)
23	017801	GAS CONTROL
24	017804	COMPRESSION NUT
	017803	OLIVE (NOT ILLUSTRATED)
25	017802	INLET SPIGOT

8.4.2 GAS ASSEMBLY BQN8900G FROM SERIAL NUMBER 23930 to 26931



Pos	Part No.	Description
1	010023	SADDLE CLAMP
2	016777	SUPPLY PIPE
3	011853	REGULATOR - NATURAL GAS ONLY
4	004523	MANIFOLD
5	012436	NIPPLE - 2½"
6	011830	ELBOW
7	011147	REDUCING BUSH
8	019220	PRESSURE TEST POINT
9	011310	BURNER
10	014553	BURNER SUPPORT BRACKET
11	013801	IGNITOR ELECTRODE
	018095	HT LEAD (NOT ILLUSTRATED)
	090118	SLEEVING - 230 mm (NOT ILLUSTRATED)
12	012699K	PILOT BURNER KIT (INCLUDES ITEMS 13,14,16)
13	011650	PILOT SPUD Ø0.010" - LPG (INCLUDED WITH ITEM 12)
	011651	PILOT SPUD Ø0.018" - NATURAL GAS (INCLUDED WITH ITEM 12)
14	011286	OLIVE - 1/4" (INCLUDED WITH ITEM 12)
15	017899	PILOT MOUNTING BRACKET
16	011287	NUT - 1/4" (INCLUDED WITH ITEM 12)
17	013215	THERMOCOUPLE CLAMP NUT
18	013848	THERMOCOUPLE
19	034165	MAIN INJECTOR Ø1.65 mm - LPG
	034260	MAIN INJECTOR Ø2.60 mm - NATURAL GAS
20	011740	INJECTOR BACKNUT
21	018359	OUTLET ELBOW (INCLUDED WITH ITEM 25)

22	017889	PILOT SUPPLY TUBE
23	017806	OLIVE - GAS CONTROL
24	017805	NUT - GAS CONTROL
25	017801	GAS CONTROL
26	017804	NUT - 10 mm
	017803	OLIVE - 10 mm (NOT ILLUSTRATED)
27	017802	INLET SPIGOT