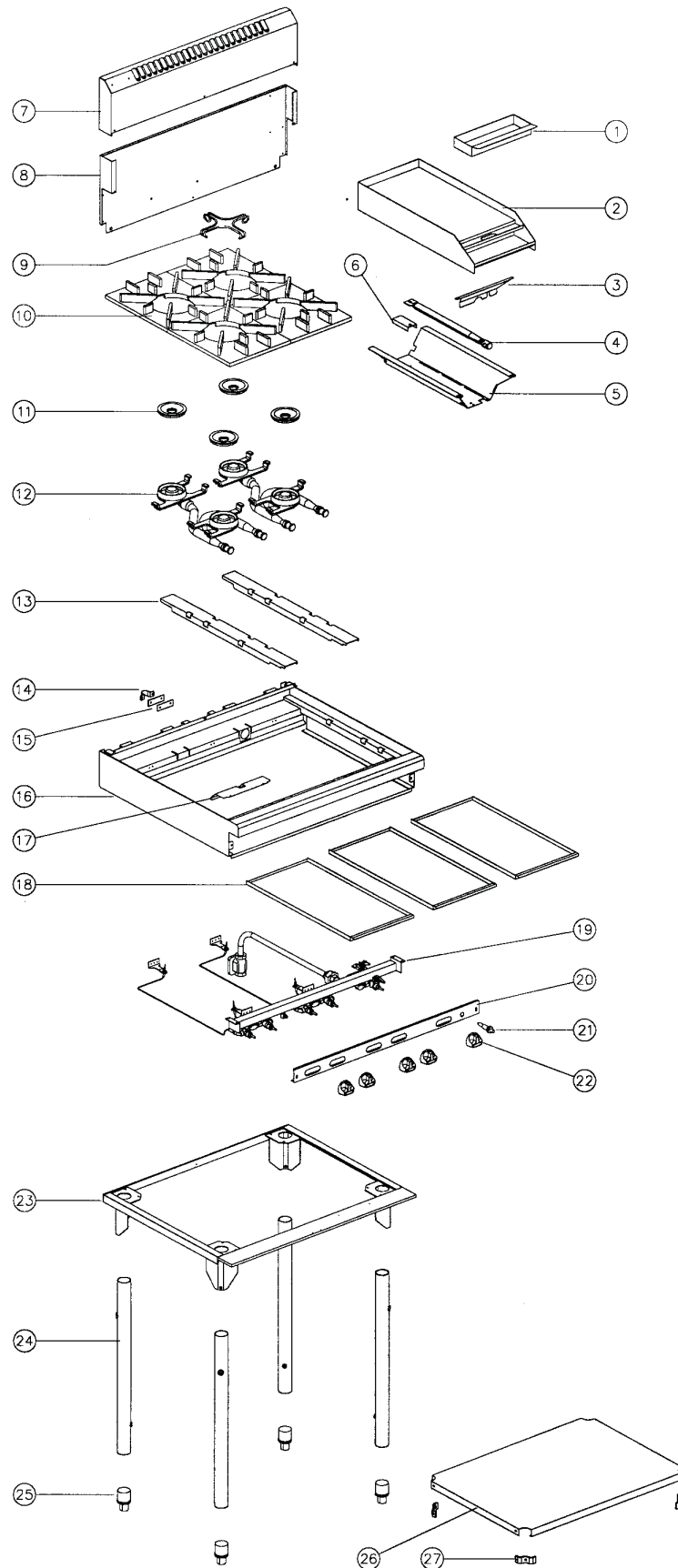


9. PARTS DIAGRAM

9.1 MAIN ASSEMBLY



Pos	Part No.	Description
1	016511	TROUGH TRAY
2	016387	GRIDDLE 900 mm
	016386	GRIDDLE 600 mm
	016385	GRIDDLE 300 mm
3	019424	HEAT SHIELD
4	014105	GRIDDLE BURNER
5	019431	GRIDDLE REFLECTOR
6	014106	GRIDDLE BURNER BRACKET
7	016194	SPLASHBACK RN8200G
	014222	SPLASHBACK RN8400G
	014220	SPLASHBACK RN8600G
	014221	SPLASHBACK RN8800G
8	015123	HOB BACK PANEL RN8200G
	012847	HOB BACK PANEL RN8400G
	012849	HOB BACK PANEL RN8600G
	012850	HOB BACK PANEL RN8800G
9	016659	POT STAND SPIDER
10	004125	POT STAND
11	004078	BURNER CAP
12	004079	FRONT BURNER ASSEMBLY
	004080	REAR BURNER ASSEMBLY
13	015439	POT SUPPORT
14	010023	SADDLE CLAMP
15	011842	PIPE SPACER
16	004392	HOB - RN8200G
	014247	HOB - RN8400G
	014245	HOB - RN8600G
	014246	HOB - RN8800G
17	017609	HEAT SHIELD (-FFP UNITS ONLY)
18	004158	HOB TRAY
19	-----	GAS PIPING ASSEMBLY (SEE SECTION 9.2 & 9.3)
20	004415	HOB CONTROL PANEL RN8203G (to S/N 30484)
	004745	HOB CONTROL PANEL RN8203G (from S/N 30484)
	004416	HOB CONTROL PANEL RN8200G
	004417	HOB CONTROL PANEL RN8406G
	004418	HOB CONTROL PANEL RN8403G (to S/N 30484)
	004746	HOB CONTROL PANEL RN8403G (from S/N 30484)
	004419	HOB CONTROL PANEL RN8400G (to S/N 30484)
	004747	HOB CONTROL PANEL RN8400G (from S/N 30484)
	004495	HOB CONTROL PANEL RN8403G -FFP
	004496	HOB CONTROL PANEL RN8400G -FFP
	004422	HOB CONTROL PANEL RN8619G
	004423	HOB CONTROL PANEL RN8616G (to S/N 30484)
	004759	HOB CONTROL PANEL RN8616G (from S/N 30484)
	004424	HOB CONTROL PANEL RN8613G (to S/N 30484)
	004760	HOB CONTROL PANEL RN8613G (from S/N 30484)
20	004425	HOB CONTROL PANEL RN8610G (to S/N 30484)
	004761	HOB CONTROL PANEL RN8610G (from S/N 30484)
	004499	HOB CONTROL PANEL RN8616G -FFP
	004498	HOB CONTROL PANEL RN8613G -FFP
	004497	HOB CONTROL PANEL RN8610G -FFP
	004426	HOB CONTROL PANEL RN8819G (to S/N 30484)
	004762	HOB CONTROL PANEL RN8819G (from S/N 30484)
	004427	HOB CONTROL PANEL RN8816G (to S/N 30484)
	004763	HOB CONTROL PANEL RN8816G (from S/N 30484)
	004428	HOB CONTROL PANEL RN8813G (to S/N 30484)
	004764	HOB CONTROL PANEL RN8813G (from S/N 30484)

	004429	HOB CONTROL PANEL RN8810G (to S/N 30484)
	004765	HOB CONTROL PANEL RN8810G (from S/N 30484)
	004503	HOB CONTROL PANEL RN8819G -FFP
	004502	HOB CONTROL PANEL RN8816G -FFP
	004501	HOB CONTROL PANEL RN8813G -FFP
	004500	HOB CONTROL PANEL RN8810G -FFP
21	020119	PIEZO IGNITOR
	018095	H.T LEAD (NOT ILLUSTRATED)
22	014451	KNOB ASSEMBLY - FRONT
	014452	KNOB ASSEMBLY - REAR
	014453	KNOB ASSEMBLY - PLATE
23	004160	CHASSIS RN8400G
	004161	CHASSIS RN8600G
	004273	CHASSIS RN8800G
24	014358	LEG TUBE - ADJUSTABLE
	014363	ADJUSTABLE LEG ASSEMBLY (24 & 25 ASSEMBLED)
25	010990	ADJUSTABLE FOOT (NOT RN8200G)
	021211	ADJUSTABLE FOOT - 38mm (RN8200G ONLY)
26	014361	LEG TRAY RN8400G
	014362	LEG TRAY RN8600G
	014939	LEG TRAY RN8800G
	004111	LEG TRAY FRAME (RN8800G ONLY) (NOT ILLUSTRATED)
	004153	LEG BRACE - 2 PER (RN8800G ONLY) (NOT ILLUSTRATED)
27	013708	LEG TRAY BRACKET (ALL UNITS EXCEPT RN8800G)

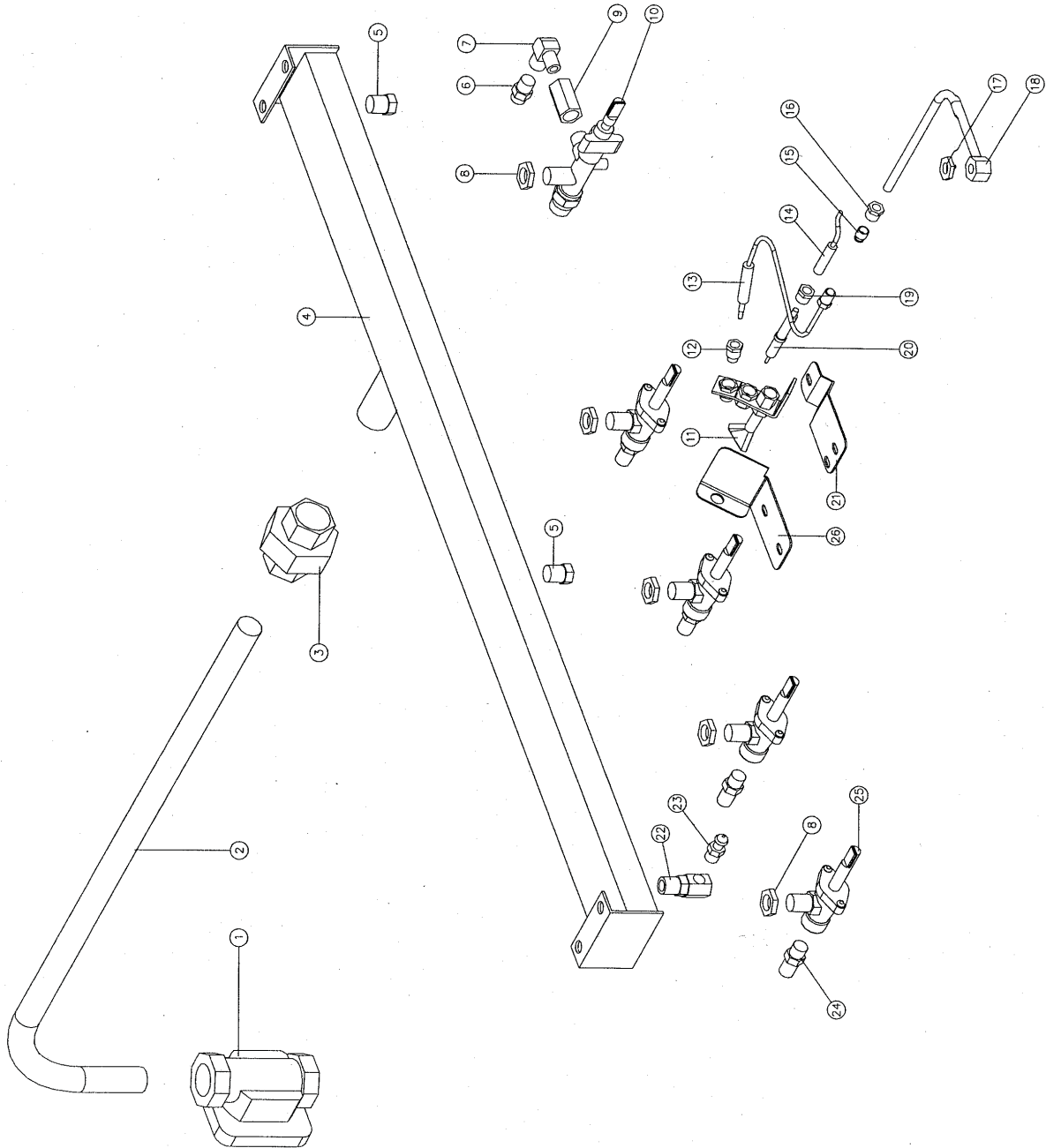
HOB TYPE CONVERSION KITS

	FROM	A	B	C	D
TO A		-	022247	022246	022245
TO B		022244	-	022243	022242
TO C		022241	022240	-	022239
TO D		022238	022237	022236	-

GAS TYPE CONVERSION KITS

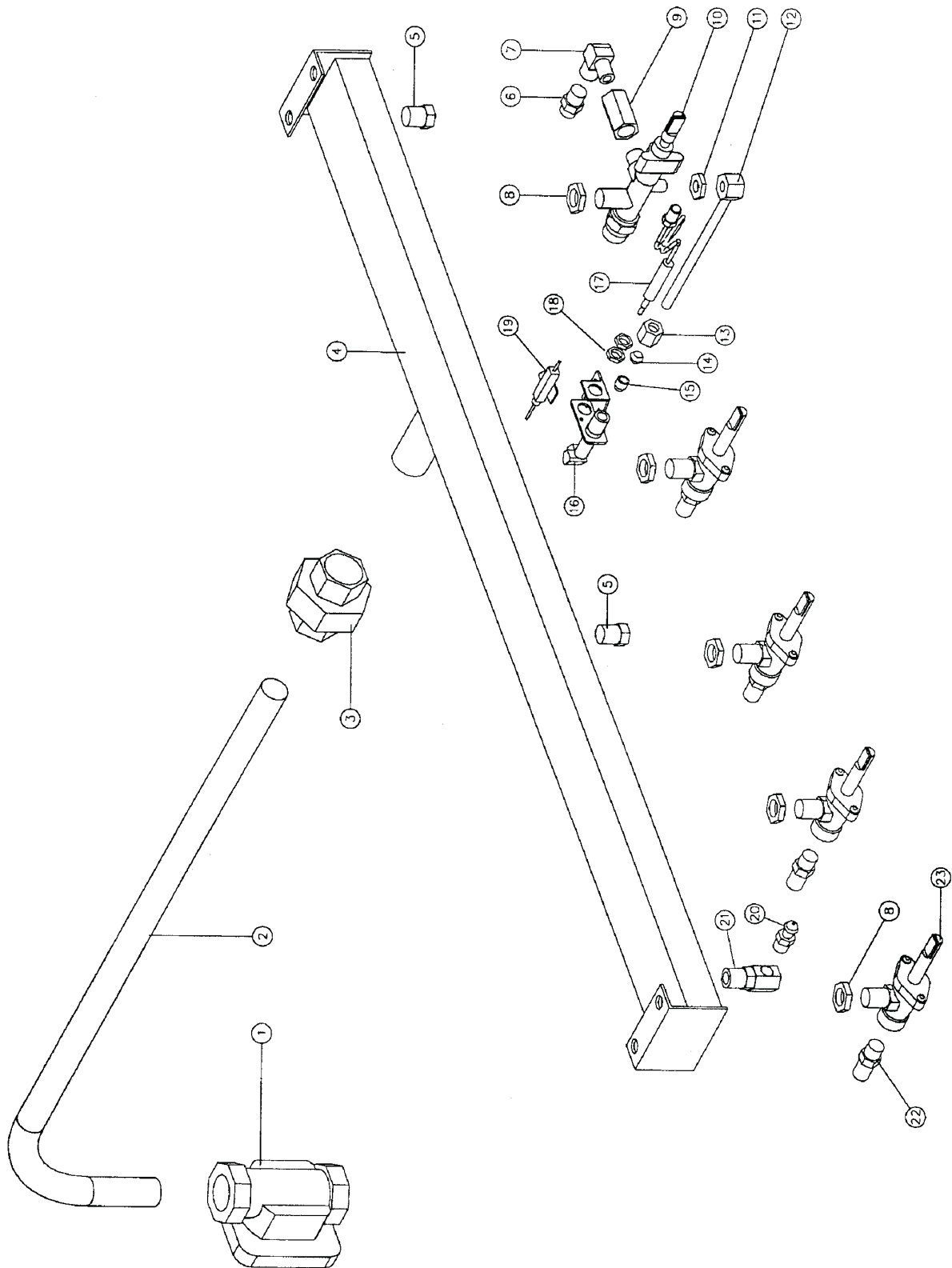
Model	Serial Numbers		Country	Conversion Kit		
	From	To		→ LPG	→ Butane	→ Natural
RN8203G	31290	→	Australia only	22942	Use NZ LPG kit	22955
			NZ/Other countries	26254		
	←	31289		16762	On request	16750
RN8200G	31290	→	Australia only	22943	Use NZ LPG kit	22956
			NZ/Other countries	26255		
	←	31289		16763	On request	16751
RN8406G	31290	→	Australia only	22944	Use NZ LPG kit	22957
			NZ/Other countries	26256		
	←	31289		16654	On request	16655
RN8403G	31290	→	Australia only	22945	Use NZ LPG kit	22958
			NZ/Other countries	26257		
	←	31289		16764	On request	16752
RN8400G	31290	→	Australia only	22946	Use NZ LPG kit	22959
			NZ/Other countries	26258		
	←	31289		16765	On request	16753
RN8609G	31290	→	Australia only	22947	Use NZ LPG kit	22960
			NZ/Other countries	26259		
	←	31289		16766	On request	16754
RN8606G	31290	→	Australia only	22948	Use NZ LPG kit	22961
			NZ/Other countries	26260		
	←	31289		16767	On request	16755
RN8603G	31290	→	Australia only	22949	Use NZ LPG kit	22962
			NZ/Other countries	26261		
	←	31289		16768	On request	16756
RN8600G	31290	→	Australia only	22950	Use NZ LPG kit	22963
			NZ/Other countries	26262		
	←	31289		16769	On request	16757
RN8809G	31290	→	Australia only	22951	Use NZ LPG kit	22964
			NZ/Other countries	26263		
	←	31289		16770	On request	16758
RN8806G	31290	→	Australia only	22952	Use NZ LPG kit	22965
			NZ/Other countries	26264		
	←	31289		16771	On request	16759
RN8803G	31290	→	Australia only	22953	Use NZ LPG kit	22966
			NZ/Other countries	26265		
	←	31289		16772	On request	16760
RN8800G	31290	→	Australia only	22954	Use NZ LPG kit	22967
			NZ/Other countries	26266		
	←	31289		16773	On request	16761

9.2.1 GAS PIPING ASSEMBLY - STD
From s/n 31290



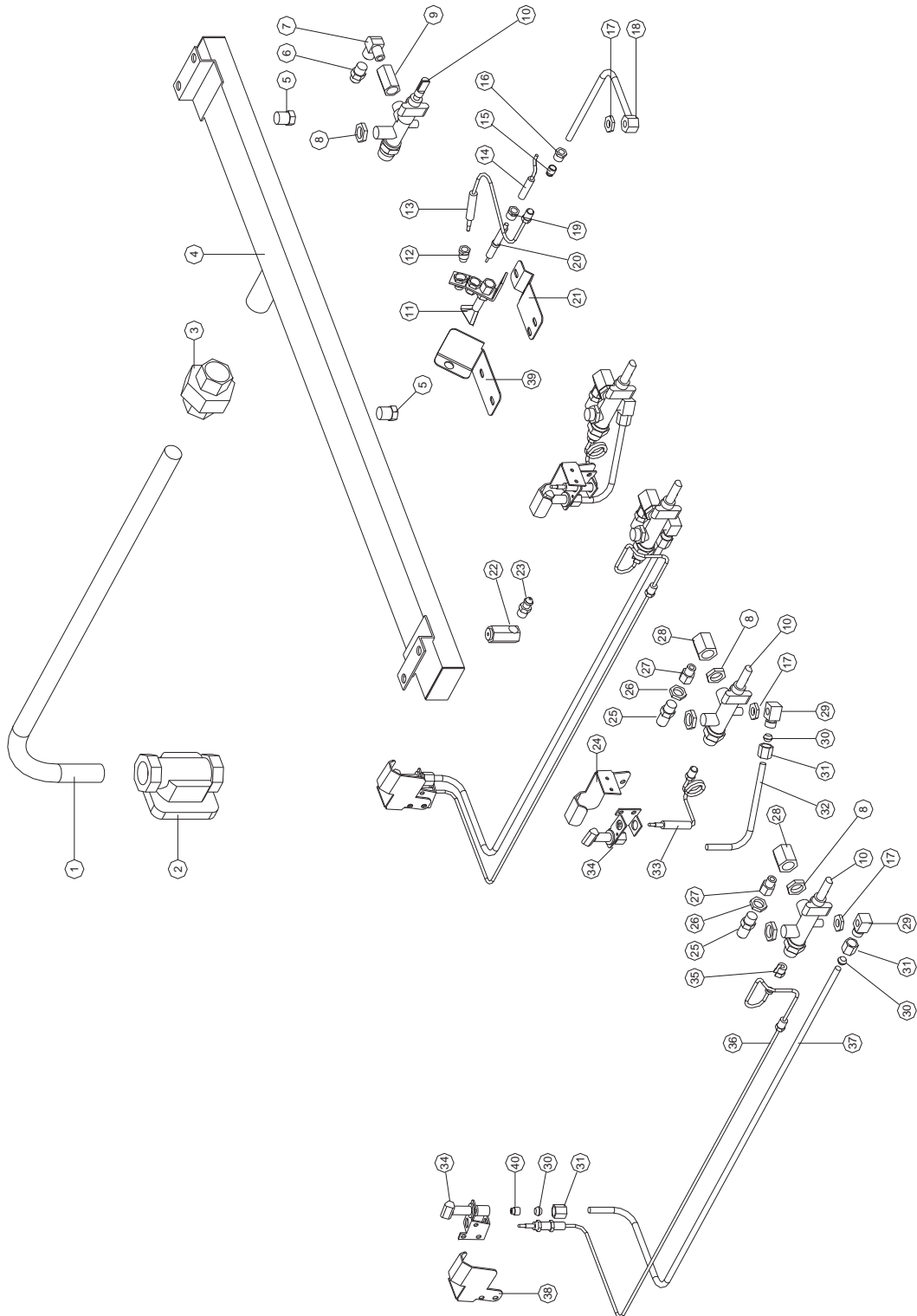
Pos	Part No.	Description
1	011853	REGULATOR (NATURAL GAS ONLY)
2	016776	HOB SUPPLY PIPE (NOT RN8200G)
	025402	HOB SUPPLY PIPE 3/8"
		(RN8200G ONLY - NOT SHOWN) (FROM S/N 256934)
	015127	HOB SUPPLY PIPE 1/2"
		(RN8200G ONLY - NOT SHOWN) (UP TO S/N 256933)
	015154	ELBOW – 3/8" COMPRESSION x 3/8"M
		(RN8200G ONLY - NOT SHOWN) (FROM S/N 256934)
	015128	ELBOW – 1/2" COMPRESSION x 3/8"M
		(RN8200G ONLY - NOT SHOWN) (UP TO S/N 256933)
	011656	REDUCING BUSH – 1/2" x 3/8" BSP (RN8200G ONLY)
	015086	SOCKET – 1/2" BSP (RN8200G ONLY)
3	011827	MACK UNION (NOT RN8200G)
4	004283	MANIFOLD RN8200G
	015154	ELBOW – 3/8" COMPRESSION x 3/8"M
		(RN8200G ONLY - NOT SHOWN) (FROM S/N 256934)
	015128	ELBOW – 1/2" COMPRESSION x 3/8"M
		(RN8200G ONLY - NOT SHOWN) (UP TO S/N 256933)
	004145	MANIFOLD RN8400G
	004147	MANIFOLD RN8600G
	004148	MANIFOLD RN8810G
5	011148	PLUG - 1/4"
6	032130	GRIDDLE INJECTOR Ø1.30 mm - LPG
	032210	GRIDDLE INJECTOR Ø2.10 mm - NATURAL GAS
7	011634	PILOT ELBOW (UP TO S/N 278399)
		(NOT AVAILABLE REFER ITEM 10, 016518)
	026022	PILOT ELBOW (FROM S/N 278400)
		(NOT AVAILABLE REFER ITEM 10, 016518)
8	013215	BACKNUT - 1/4" BSP
9	012918	OUTLET CONNECTOR (NOT AVAILABLE, REFER ITEM 10, 016518)
10	016518	GRIDDLE TAP ASSEMBLY (ASSEMBLED WITH ITEMS 7,8,9,17)
11	019215K	GRIDDLE PILOT BURNER KIT - R.H (INCLUDES ITEMS 12,15,16,19,20)
12	018741	TARGET CLAMP NUT
13	019428	THERMOCOUPLE - 320mm
	019575	M10 THERMOCOUPLE SPLIT NUT
14	018095	HIGH TENSION LEAD
15	018692	PILOT INJECTOR Ø0.20mm - LPG
	018693	PILOT SPUD Ø0.32mm - NATURAL
16	018739	TARGET OLIVE
	018740	TARGET NUT
17	012919	BACKNUT- 5/16" UNF
18	020656	PILOT TUBE ASSEMBLY
19	018742	ELECTRODE NUT
20	018744	PILOT ELECTRODE
21	019425	GRIDDLE PILOT BRACKET
22	011741	PRESSURE ADAPTOR
23	019371	PRESSURE TEST POINT
24	034130	OPEN BURNER INJECTOR Ø1.30 mm - LPG
	034210	OPEN BURNER INJECTOR Ø2.10 mm - NATURAL GAS
25	020639	GAS TAP
26	023863	GRIDDLE PILOT DRAFT BAFFLE (FROM S/N 215176)

9.2.2 GAS PIPING ASSEMBLY - STD
To s/n 31289



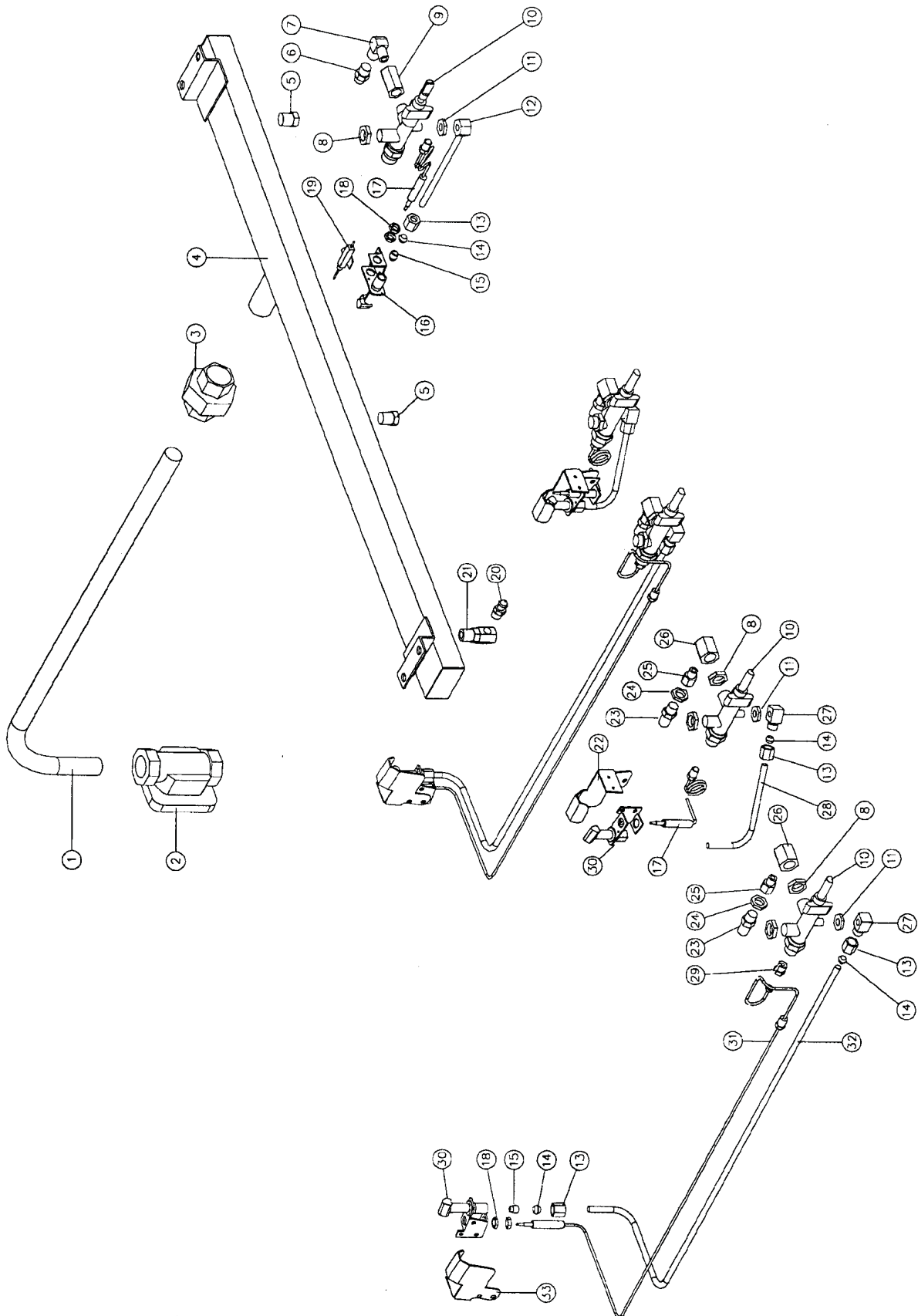
Pos	Part No.	Description
1	011853	REGULATOR (NATURAL GAS ONLY)
2	016776	HOB SUPPLY PIPE
3	011827	MACK UNION
4	004283	MANIFOLD RN8200G
	004145	MANIFOLD RN8400G
	004147	MANIFOLD RN8600G
	004148	MANIFOLD RN8800G
5	011148	PLUG - 1/4"
6	032130	GRIDDLE INJECTOR Ø1.30 mm - LPG
	032210	GRIDDLE INJECTOR Ø2.10 mm - NATURAL GAS
7	011634	PILOT ELBOW (UP TO S/N 278399) (NOT AVAILABLE REFER ITEM 10, 16518)
	026022	PILOT ELBOW (FROM S/N 278400) (NOT AVAILABLE REFER ITEM 10, 16518)
8	013215	BACKNUT - 1/4" BSP
9	012918	OUTLET CONNECTOR (NOT AVAILABLE, REFER ITEM 10, 016518)
10	016518	GRIDDLE TAP ASSEMBLY (ASSEMBLED WITH ITEMS 7,8,9,11)
11	012919	BACKNUT- 5/16" UNF
12	012921	PILOT TUBE ASSEMBLY
13	011287	NUT (PART OF ITEM 16)
14	011286	OLIVE (PART OF ITEM 16)
15	011650	PILOT SPUD - LPG
	011651	PILOT SPUD - NATURAL
16	012699K	GRIDDLE PILOT BURNER KIT (ASSEMBLED WITH ITEMS 13,14,15)
17	012916	THERMOCOUPLE - 300 mm
18	-----	THERMOCOUPLE NUTS (PART OF ITEM 17)
19	013801	PIEZO ELECTRODE
20	011741	PRESSURE ADAPTOR
21	011337	PRESSURE TEST POINT
22	034130	OPEN BURNER INJECTOR Ø1.30 mm - LPG
	034210	OPEN BURNER INJECTOR Ø2.10 mm - NATURAL GAS
23	011154	GAS TAP

9.3.1 GAS PIPING ASSEMBLY - FFP From s/n 31290



Pos	Part No.	Description
1	016776	HOB SUPPLY PIPE
2	011853	REGULATOR (NATURAL GAS ONLY)
3	011827	MACK UNION
4	004479	MANIFOLD RN8400G -FFP
	004480	MANIFOLD RN8600G -FFP
	004481	MANIFOLD RN8800G -FFP
5	011148	PLUG - 1/4"
6	032130	GRIDDLE INJECTOR Ø1.30 mm - LPG
	032210	GRIDDLE INJECTOR Ø2.10 mm - NATURAL GAS
7	011634	ELBOW (UP TO S/N 278399) (NOT AVAILABLE, REFER ITEM 10, 016518)
	026022	PILOT ELBOW (FROM S/N 278400) (NOT AVAILABLE, REFER ITEM 10, 016518)
8	013215	BACKNUT - 1/4" BSP
9	012918	OUTLET CONNECTOR (NOT AVAILABLE, REFER ITEM 10, 016518)
10	016518	GRIDDLE TAP ASSEMBLY (ASSEMBLED WITH ITEMS 7,8,9,17)
	017611	OPEN BURNER TAP ASSEMBLY (ASSEMBLED WITH ITEMS 8,17,28)
11	019215K	GRIDDLE PILOT BURNER KIT - R.H (INCLUDES ITEMS 12,15,16,19,20)
12	018741	TARGET CLAMP NUT
13	019428	THERMOCOUPLE - 320mm
	019575	M10 THERMOCOUPLE SPLIT NUT
14	018095	HT LEAD
15	018692	PILOT INJECTOR Ø0.20mm - LPG
	018693	PILOT INJECTOR Ø0.32mm - NATURAL
16	018739	TARGET OLIVE
	018740	TARGET NUT
17	012919	BACKNUT- 5/16" UNF
18	020656	PILOT TUBE ASSEMBLY
19	018742	ELECTRODE NUT
20	018744	PILOT ELECTRODE
21	019425	GRIDDLE PILOT BRACKET
22	019371	PRESSURE TEST POINT
23	011741	PRESSURE ADAPTOR
24	017607	PILOT SHROUD - FRONT
25	034130	OPEN BURNER INJECTOR Ø1.30 mm - LPG
	034210	OPEN BURNER INJECTOR Ø2.10 mm - NATURAL GAS
26	011740	JET BACKNUT (UP TO S/N 246144)
27	017613	ADAPTOR - 1/8" BSP M/F (NOT AVAILABLE, REFER TO ITEM 10, 017611 ASSEMBLY)
28	017612	INJECTOR ELBOW (UP TO S/N 278399)(NOT AVAILABLE, REFER TO ITEM 10, 017611 ASSEMBLY)
	026023	INJECTOR ELBOW (FROM S/N 278400)(NOT AVAILABLE, REFER ITEM 10, 017611 ASSEMBLY)
29	017079	PILOT OUTLET FITTING
30	011286	OLIVE
31	011287	NUT
32	017614	PILOT TUBE FRONT
33	012916	THERMOCOUPLE - 300 mm
	024573	THERMOCOUPLE LOCK-NUT (NOT ILLUSTRATED)
34	013000K	PILOT BURNER KIT (INCLUDES ITEM 40)
35	019575	THERMOCOUPLE SPLIT NUT
36	017617	THERMOCOUPLE - 750 mm
	024573	THERMOCOUPLE LOCK-NUT (NOT ILLUSTRATED)
37	017615	PILOT TUBE REAR
38	017608	PILOT SHROUD – REAR
39	023863	GRIDDLE PILOT DRAFT BAFFLE (FROM S/N 215176)
40	011650	PILOT SPUD – LPG 0.010"
	011651	PILOT SPUD – NAT 0.018"

9.3.2 GAS PIPING ASSEMBLY - FFP To s/n 31289



Pos	Part No.	Description
1	016776	HOB SUPPLY PIPE
2	011853	REGULATOR (NATURAL GAS ONLY)
3	011827	MACK UNION
4	004479	MANIFOLD RN8400G
	004480	MANIFOLD RN8600G
	004481	MANIFOLD RN8800G
5	011148	PLUG - 1/4"
6	032130	GRIDDLE INJECTOR Ø1.30 mm - LPG
	032210	GRIDDLE INJECTOR Ø2.10 mm - NATURAL GAS
7	011634	PILOT ELBOW (UP TO S/N 278399) (NOT AVAILABLE REFER ITEM 10, 016518)
	026022	PILOT ELBOW (FROM S/N 278400) (NOT AVAILABLE REFER ITEM 10, 016518)
8	013215	BACKNUT - 1/4" BSP
9	012918	OUTLET CONNECTOR (NOT AVAILABLE, REFER ITEM 10, 016518)
10	016518	GRIDDLE TAP ASSEMBLY (ASSEMBLED WITH ITEMS 7,8,9,11)
	017611	OPEN BURNER TAP ASSEMBLY (ASSEMBLED WITH ITEMS 8,11,26)
11	012919	BACKNUT- 5/16" UNF
12	012921	PILOT TUBE ASSEMBLY
13	011287	NUT
14	011286	OLIVE
15	011650	PILOT SPUD 0.010" - LPG
	011651	PILOT SPUD 0.018" - NATURAL
16	012699K	GRIDDLE PILOT BURNER KIT (ASSEMBLED WITH ITEMS 13,14,15)
17	012916	THERMOCOUPLE - 300 mm
18	024573	THERMOCOUPLE LOCK-NUT
19	013801	PIEZO ELECTRODE
20	011741	PRESSURE ADAPTOR
21	011337	PRESSURE TEST POINT
22	017607	PILOT SHROUD - FRONT
23	034130	OPEN BURNER INJECTOR Ø1.30 mm - LPG
	034210	OPEN BURNER INJECTOR Ø2.10 mm - NATURAL GAS
24	011740	JET BACKNUT
25	017613	ADAPTER - 1/8" BSP M/F (NOT AVAILABLE, REFER ITEM 10, 017611 ASSEMBLY)
26	017612	INJECTOR ELBOW (UP TO S/N 278399)(NOT AVAILABLE, REFER TO ITEM 10, 017611 ASSEMBLY)
	026023	INJECTOR ELBOW (FROM S/N 278400)(NOT AVAILABLE, REFER ITEM 10, 017611 ASSEMBLY)
27	017079	PILOT OUTLET FITTING
28	017614	PILOT TUBE FRONT
29	019575	THERMOCOUPLE SPLIT NUT
30	013000K	PILOT BURNER KIT (USES ITEM 15 PILOT SPUDS)
31	017617	THERMOCOUPLE - 750 mm
	024573	THERMOCOUPLE LOCK-NUT (NOT ILLUSTRATED)
32	017615	PILOT TUBE REAR
33	017608	PILOT SHROUD - REAR