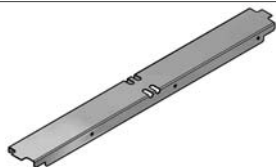


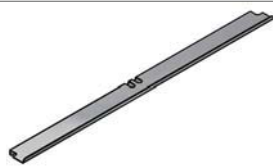
## JOINING CAPS



**228579**

Cooktop Open Burners  
To Cooktop Open Burners  
To Chargrill  
To Cooktop Griddle

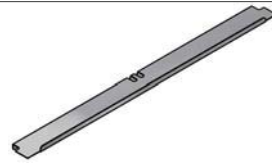
Cooktop Griddle  
To Chargrill



**228595**

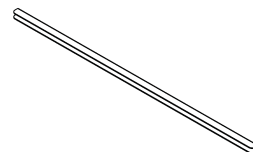
Cooktop Open Burners  
To Target Top

Cooktop Griddle  
To Target Top



**228587**

Cooktop Open Burners  
To Griddle



**228893**

Cooktop Griddle  
To Cooktop Griddle  
To Griddle  
To Griddle Toaster  
To Cooktop Electric- Griddle

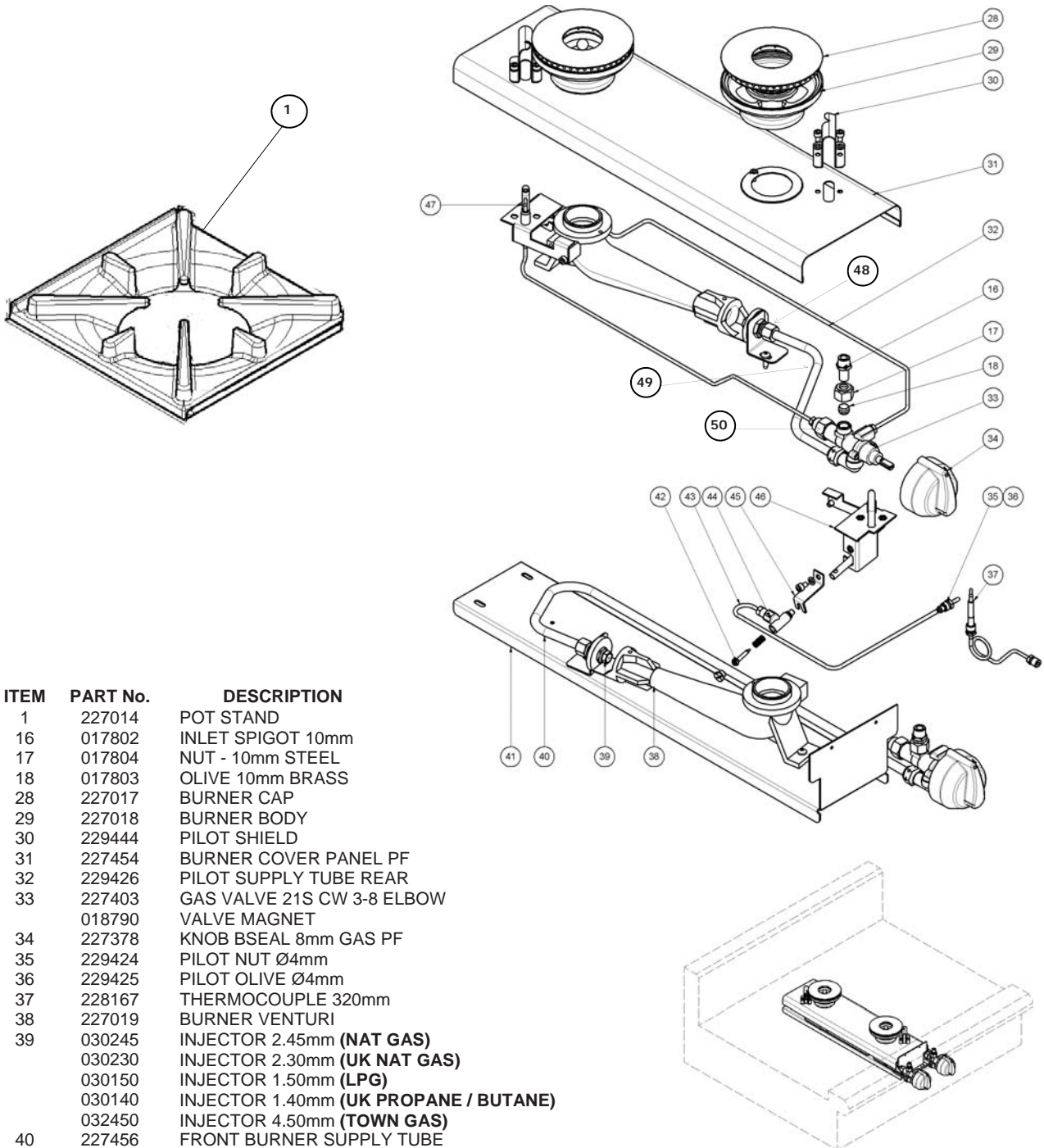
SIMMER PLATE 227016

## Section

## Page No.

<b>8.1</b>	<b>Convection Range Cooktop .....</b>	<b>52</b>
8.1.1	Cooktop Open Burners (F Models) - up to Ser. No. 718549 .....	52
8.1.2	Cooktop Open Burners (PF Models) - up to Ser. No. 718549.....	53
8.1.3	Cooktop Open Burners (F Models) - from to Ser. No. 718550 .....	54
8.1.4	Cooktop Open Burners (PF Models) - from to Ser. No. 718550 .....	55
8.1.5	Cooktop Griddle Burners .....	57
<b>8.2</b>	<b>G54 Oven Assembly.....</b>	<b>58</b>
8.2.1	Main Assembly .....	58
8.2.2	Door Assembly .....	59
8.2.3	Gas Assembly.....	60
8.2.4	Fan Motor Assembly .....	62
8.2.5	Racks.....	63
<b>8.3</b>	<b>G56 Oven Assembly.....</b>	<b>64</b>
8.3.1	Main Assembly .....	64
8.3.2	Door Assembly .....	65
8.3.3	Gas Assembly.....	66
8.3.4	Fan Motor Assembly .....	68
8.3.5	Racks.....	69
<b>8.4</b>	<b>G58 Oven Assembly.....</b>	<b>70</b>
8.4.1	Main Assembly .....	70
8.4.2	Door Assembly .....	71
8.4.3	Gas Assembly.....	72
8.4.4	Fan Motor Assembly .....	74
8.4.5	Racks.....	75

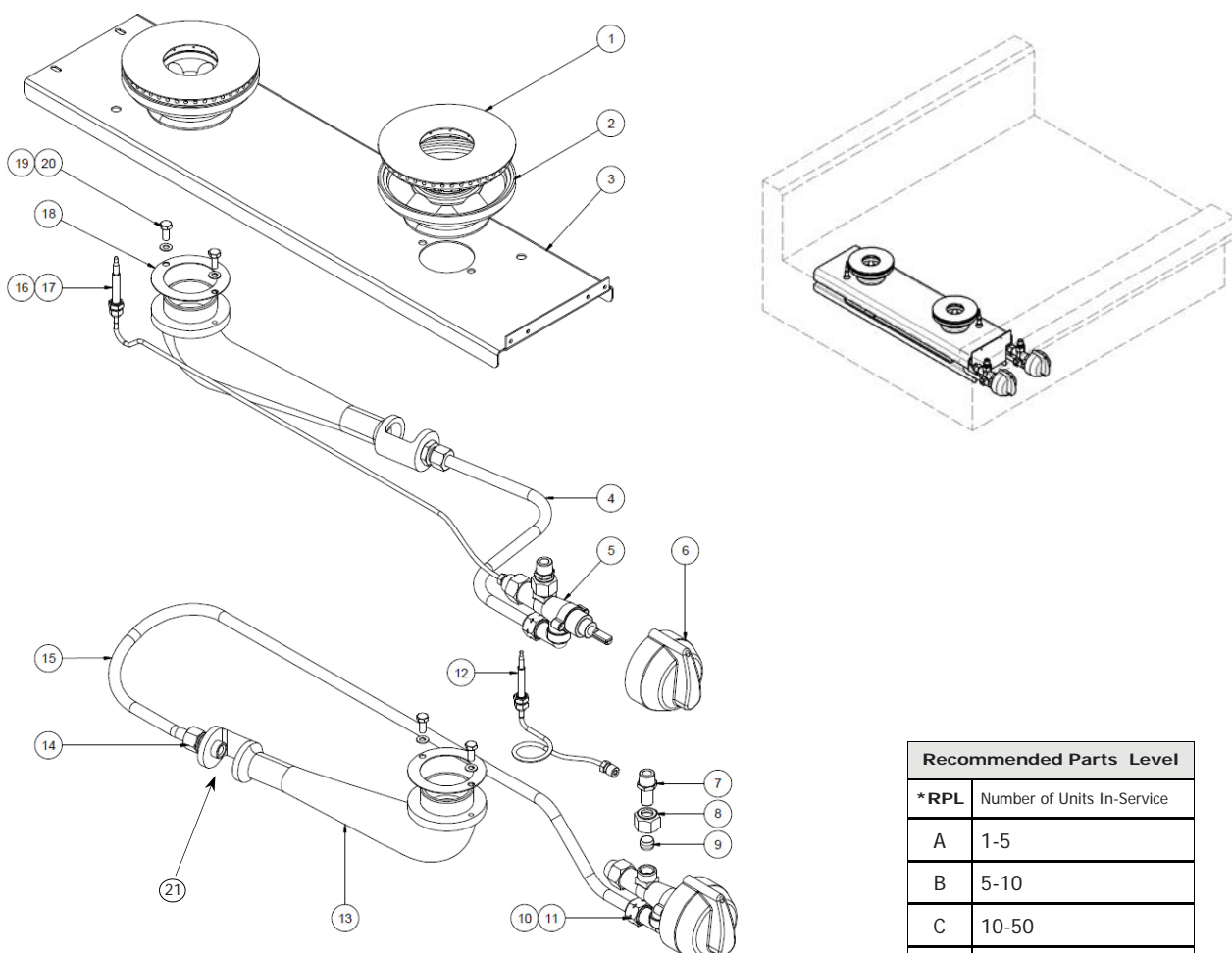
## 8.1.2 Cooktop Open Burners (PF Models) - up to Ser. No. 718549.



ITEM	PART No.	DESCRIPTION
1	227014	POT STAND
16	017802	INLET SPIGOT 10mm
17	017804	NUT - 10mm STEEL
18	017803	OLIVE 10mm BRASS
28	227017	BURNER CAP
29	227018	BURNER BODY
30	229444	PILOT SHIELD
31	227454	BURNER COVER PANEL PF
32	229426	PILOT SUPPLY TUBE REAR
33	227403	GAS VALVE 21S CW 3-8 ELBOW
	018790	VALVE MAGNET
34	227378	KNOB BSEAL 8mm GAS PF
35	229424	PILOT NUT Ø4mm
36	229425	PILOT OLIVE Ø4mm
37	228167	THERMOCOUPLE 320mm
38	227019	BURNER VENTURI
39	030245	INJECTOR 2.45mm (NAT GAS)
	030230	INJECTOR 2.30mm (UK NAT GAS)
	030150	INJECTOR 1.50mm (LPG)
	030140	INJECTOR 1.40mm (UK PROPANE / BUTANE)
	032450	INJECTOR 4.50mm (TOWN GAS)
40	227456	FRONT BURNER SUPPLY TUBE
41	227132	BURNER SUPPORT
42	026134	PILOT INJECTOR SPUD 0.30mm (NAT GAS)
	026136	PILOT INJECTOR SPUD 0.20mm (LPG / PROPANE / BUTANE)
	232309	PILOT INJECTOR SPUD 0.60mm (TOWN GAS)
43	229422	PILOT SUPPLY TUBE FRONT
44	229880	PILOT SIT 100 SERIES INJECTOR BASE
45	229443	PILOT INJECTOR BASE CLAMP
46	229442	PILOT BRACKET WA
47	228166	THERMOCOUPLE 600mm
48	227375	INJECTOR CONNECTOR ASSEMBLY (INCLUDES NUT & OLIVE)
	015152	NUT 3/8"
	015153	OLIVE 3/8"
49	227457	REAR BURNER SUPPLY PIPE
50	227560	NUT 3/8"
	227559	OLIVE 3/8"
	228790	OPEN BURNER 300mm MODULE (PF) KIT (Does not include Knobs or Pot Stands).
	230676	OPEN BURNER 300mm MODULE (PF) KIT - UK Only (Does not include Knobs or Pot Stands).

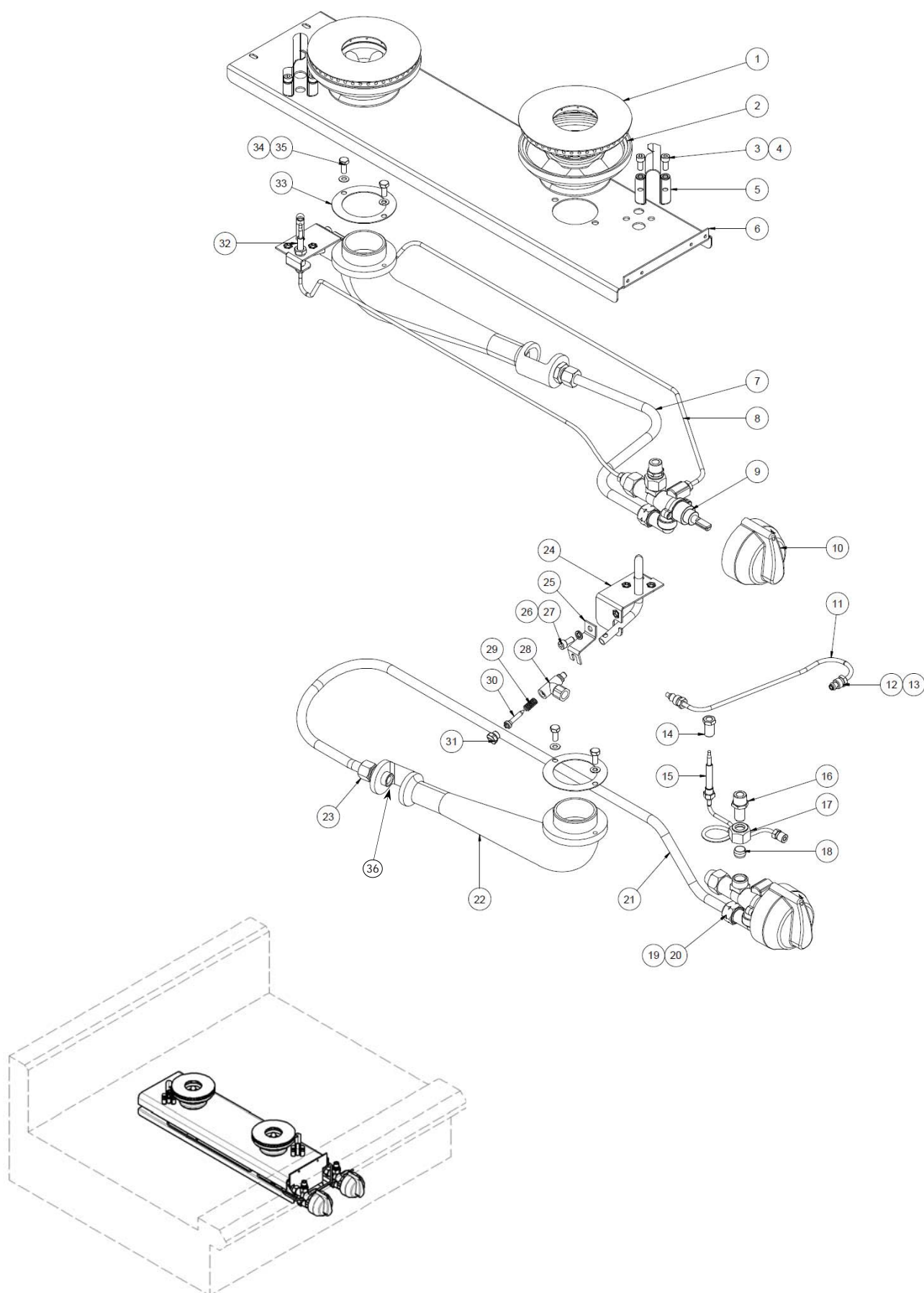
## 8 Exploded Parts Diagrams

### 8.1.3 Cooktop Open Burners (F Models) - from Ser. No. 718550



ITEM	PART No.	DESCRIPTION	*RPL
1	227017	BURNER CAP	C
2	235678	BURNER BODY	C
3	235699	BURNER MOUNTING RAIL	D
4	024156	FLEXTUBE T6 x 12"	D
5	227405	GAS VALVE 20S-B	D
6	227379	KNOB BSEAL 8mm GAS STD / F	B
7	017802	INLET SPIGOT 10mm	C
8	017804	NUT - 10mm STEEL	A
9	017803	OLIVE 10mm BRASS	B
10	227559	OLIVE 3/8"	A
11	227560	NUT 3/8"	D
12	235711	THERMOCOUPLE 200mm M9	A
13	235679	BURNER VENTURI	D
14	227375	INJECTOR CONNECTOR	A
15	236223	FLEXTUBE T6 x 30"	D
16	024573	THERMOCOUPLE SLEEVE NUT M8 x 1	C
17	235710	THERMOCOUPLE 600mm M9	A
18	235712	OPEN BURNER VENTURI GASKET	D
19	045024	WASHER M5 SS	D
20	041421	SCREW M5X12 HEX HD SS	D
21	030245	INJECTOR 2.45mm (NAT GAS)	A
--	030230	INJECTOR 2.30mm (UK NAT GAS)	A
--	030150	INJECTOR 1.50mm (LPG)	A
--	030140	INJECTOR 1.40mm (UK PROPANE)	A
--	030140	INJECTOR 1.40mm (BUTANE)	A
--	030450	INJECTOR 4.50mm (TOWN GAS)	A
	236237	OPEN BURNER 300mm MODULE (PF) KIT (Does not include Knobs or Pot Stands).	
	236239	OPEN BURNER 300mm MODULE (PF) KIT - UK Only (Does not include Knobs or Pot Stands).	

## 8.1.4 Cooktop Open Burners (PF Models) - from Ser. No. 718550



## 8 Exploded Parts Diagrams

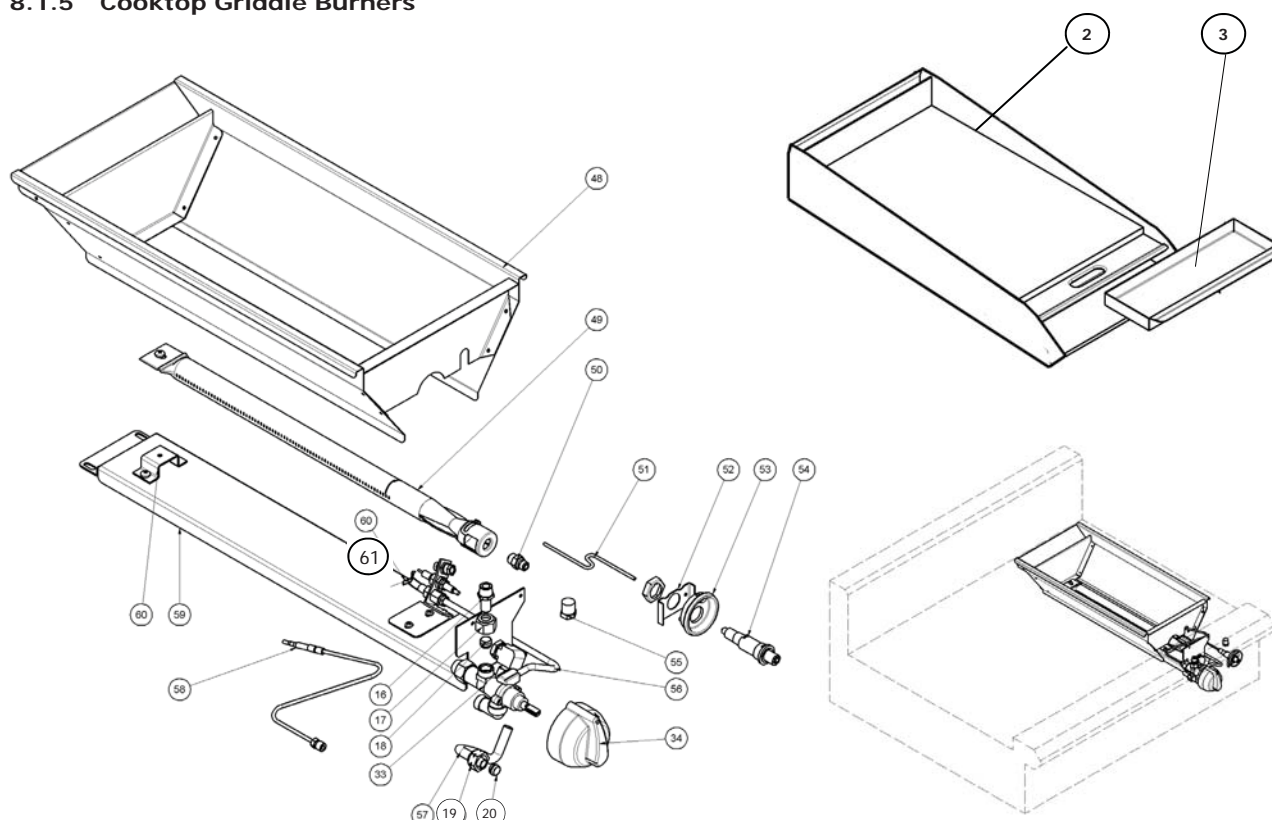
### 8.1.4 Cooktop Open Burners (PF Models) - from Ser. No. 718550 - Parts List (Contd)

ITEM	DWG No.	DESCRIPTION	*RPL
1	227017	BURNER CAP	C
2	235678	BURNER BODY	C
3	748014	SCREW M5 x 12 SKT HD CAP ST/ST	D
4	045024	WASHER M5 SS	D
5	229444	PILOT SHIELD	D
6	235726	BURNER MOUNTING RAIL - PILOT	D
7	024156	FLEXTUBE T6 x 12	A
8	236225	FLEXTUBE Ø4.0mm x 630mm	A
9	227403	GAS VALVE 21S CW 3-8 ELBOW	A
10	227378	KNOB BSEAL 8mm GAS PF	B
11	236224	FLEXTUBE Ø4.0mm x 260mm	A
12	229424	PILOT NUT Ø4mm	D
13	229425	PILOT OLIVE Ø4mm	D
14	236067	PILOT MODULE THERMOCOUPLE NUT	D
15	235711	THERMOCOUPLE 200mm M9	A
16	017802	INLET SPIGOT 10mm	A
17	017804	NUT - 10mm STEEL	D
18	017803	OLIVE 10mm BRASS	D
19	227559	OLIVE 3/8"	D
20	227560	NUT 3/8"	D
21	236223	FLEXTUBE T6 x 30	A
22	235679	BURNER VENTURI	D
23	227375	INJECTOR CONNECTOR ASSY 3-8 x M14	D
24	236213	PILOT TUBE WA	D
25	236215	OPEN BURNER PILOT INJECTOR BASE CLAMP	D
26	045411	WASHER M5 SPRING SS	D
27	748014	SCREW M5 x 12 SKT HD CAP ST/ST	D
28	229880	PILOT ASSY NAT	D
29	PART OF 28	PILOT BODY SPRING	D
30	026136	PILOT INJECTOR SPUD Ø0.20mm (LPG)	A
	026134	PILOT INJECTOR SPUD Ø0.30mm (NAT)	A
	232309	PILOT INJECTOR SPUD Ø0.60mm (TOWN GAS)	A
31	PART OF 28	PILOT BODY NUT	D
32	235710	THERMOCOUPLE 600mm M9	A
33	235712	OPEN BURNER VENTURI GASKET	D
34	045024	WASHER M5 SS	D
35	041421	SCREW M5 x 12 HEX HD SS	D
36	030245	INJECTOR 2.45mm ( <b>NAT GAS</b> )	A
--	030230	INJECTOR 2.30mm ( <b>UK NAT GAS</b> )	A
--	030150	INJECTOR 1.50mm ( <b>LPG</b> )	A
--	030140	INJECTOR 1.40mm ( <b>UK PROPANE</b> )	A
--	030140	INJECTOR 1.40mm ( <b>BUTANE</b> )	A
--	030450	INJECTOR 4.50mm ( <b>TOWN GAS</b> )	A
	236238	OPEN BURNER 300mm MODULE (PF) KIT (Does not include Knobs or Pot Stands).	
	236240	OPEN BURNER 300mm MODULE (PF) KIT - UK Only (Does not include Knobs or Pot Stands).	

Recommended Parts Level	
*RPL	Number of Units In-Service
A	1-5
B	5-10
C	10-50
D	50+



## 8.1.5 Cooktop Griddle Burners

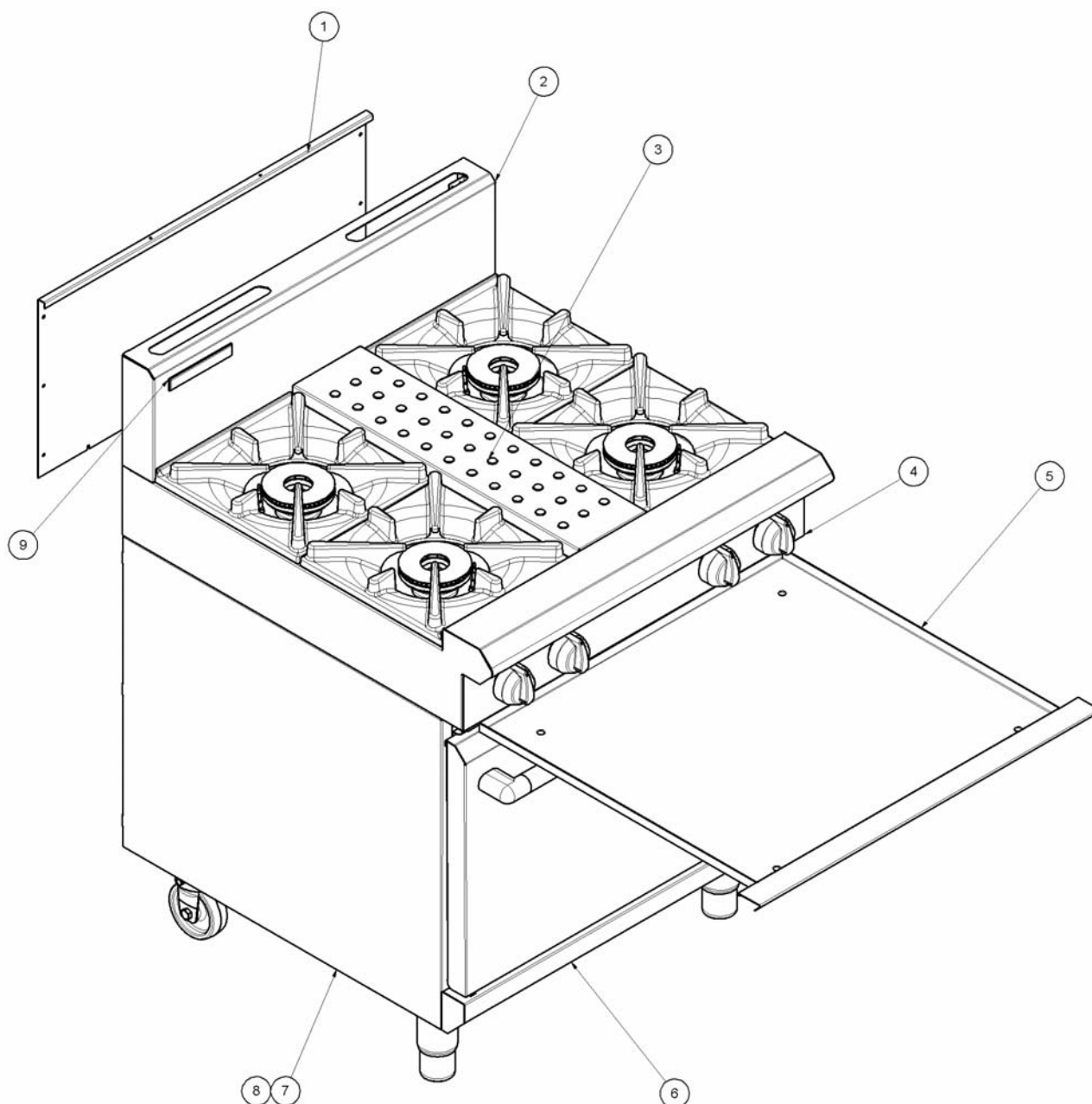


ITEM	PART No.	DESCRIPTION
2	PG312	GRIDDLE PLATE GAS 300mm WA
	PG612	GRIDDLE PLATE GAS 600mm WA
	PG912	GRIDDLE PLATE GAS 900mm WA
3	228288	GREASE TRAY
16	017802	INLET SPIGOT 10mm
17	017804	NUT - 10mm STEEL
18	017803	OLIVE 10mm BRASS
19	227560	NUT - 3/8" STEEL
20	227559	OLIVE 3/8" BRASS
33	227403	GAS VALVE 21S CW 3-8 ELBOW
	018790	VALVE MAGNET
34	227378	KNOB BSEAL 8mm GAS PF
35	229424	PILOT NUT Ø4mm
48	230213	GRIDDLE REFLECTOR ASSY
49	014105	GRIDDLE BURNER
50	032210	INJECTOR 2.1mm (NAT GAS)
50	032130	INJECTOR 1.3mm (LPG / PROPANE)
	032120	INJECTOR 1.4mm (BUTANE)
	032450	INJECTOR 4.5mm (TOWN GAS)
51	228047	HT LEAD 250mm
52	228223	PIEZO CLAMP
53	228010	PIEZO HOUSING
54	227508	PIEZO - SIT
55	011148	BRASS PLUG 3152 x 4
56	227594	PILOT SUPPLY TUBE
	017805	PILOT NUT 1/4" (VALVE END).
	017806	PILOT OLIVE 1/4" (VALVE END).
57	022686	FLEXTUBE DORMONT T6
58	019428	THERMOCOUPLE 320mm M9 x 1
59	227178	BURNER SUPPORT
60	227765	BURNER MOUNTING BRACKET
61	019215K	PILOT BURNER KIT
	026488	PILOT BURNER INJECTOR 0.35mm (NAT GAS)
	019217	PILOT BURNER INJECTOR 0.23mm (LPG / PROPANE / BUTANE)
	018067	PILOT BURNER INJECTOR 0.60mm (TOWN GAS)
	018744	PIEZO IGNITION ELECTRODE
	228713	GRIDDLE MODULE KIT

## 8 Exploded Parts Diagrams

### 8.2 G54

#### 8.2.1 G54 Main Assembly



ITEM	PART No.	DESCRIPTION
1	228450	BACK PANEL
2	228810	SPLASHBACK
3	228851	POT STAND SPACER 750
4	230110	CONTROL PANEL
5	230282	SPILL TRAY 750mm WA
6	229890	SILL WA 750mm
7	228401	SIDE PANEL RH
8	228078	SIDE PANEL LH
9	227960	BLUESEAL BADGE



## Section

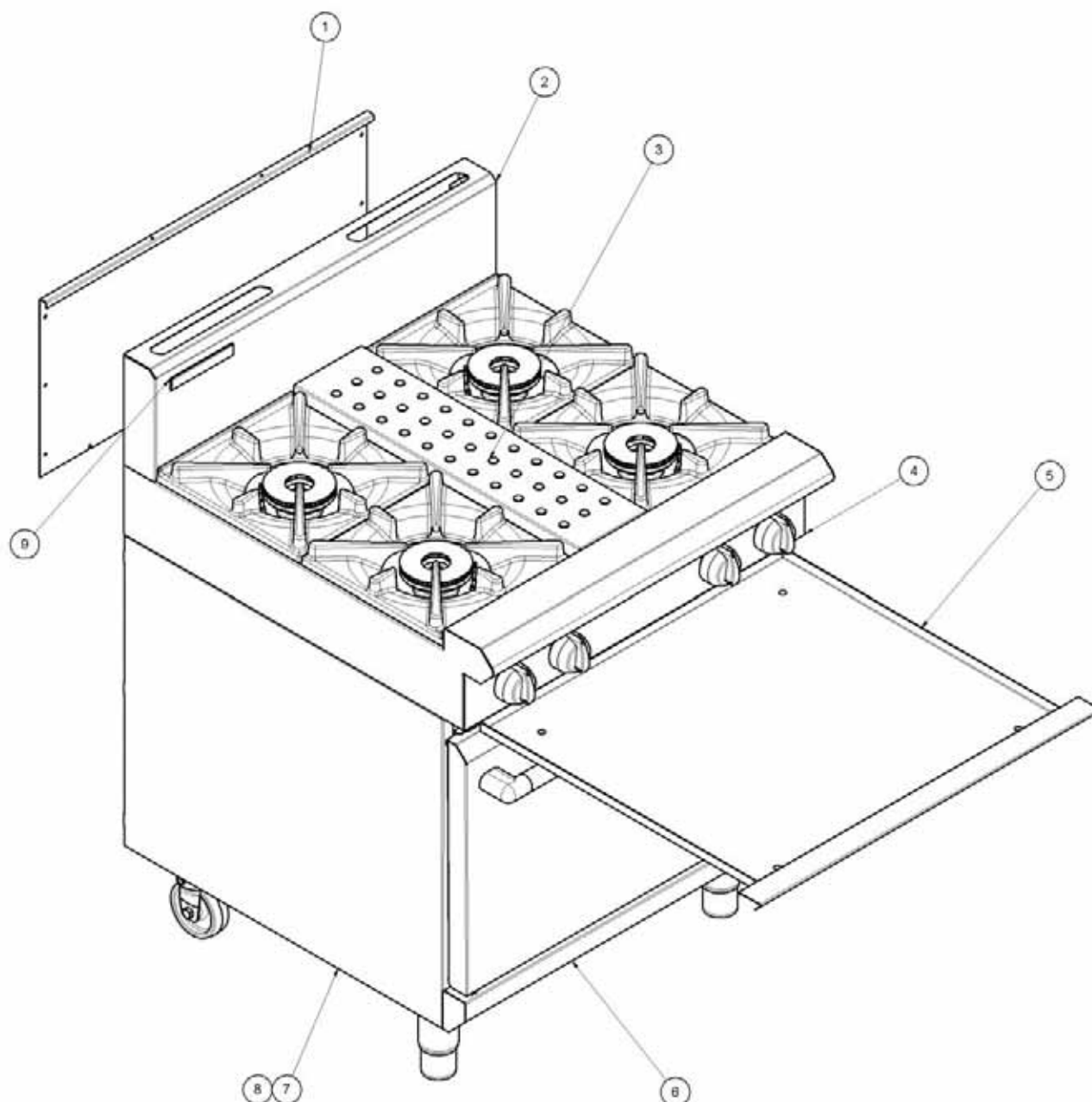
## Page No.

<b>8.1</b>	<b>Convection Range Cooktop .....</b>	<b>52</b>
8.1.1	Cooktop Open Burners (F Models) - up to Ser. No. 718549 .....	52
8.1.2	Cooktop Open Burners (PF Models) - up to Ser. No. 718549.....	53
8.1.3	Cooktop Open Burners (F Models) - from to Ser. No. 718550 .....	54
8.1.4	Cooktop Open Burners (PF Models) - from to Ser. No. 718550 .....	55
8.1.5	Cooktop Griddle Burners .....	57
<b>8.2</b>	<b>G54 Oven Assembly.....</b>	<b>58</b>
8.2.1	Main Assembly .....	58
8.2.2	Door Assembly .....	59
8.2.3	Gas Assembly.....	60
8.2.4	Fan Motor Assembly .....	62
8.2.5	Racks.....	63
<b>8.3</b>	<b>G56 Oven Assembly.....</b>	<b>64</b>
8.3.1	Main Assembly .....	64
8.3.2	Door Assembly .....	65
8.3.3	Gas Assembly.....	66
8.3.4	Fan Motor Assembly .....	68
8.3.5	Racks.....	69
<b>8.4</b>	<b>G58 Oven Assembly.....</b>	<b>70</b>
8.4.1	Main Assembly .....	70
8.4.2	Door Assembly .....	71
8.4.3	Gas Assembly.....	72
8.4.4	Fan Motor Assembly .....	74
8.4.5	Racks.....	75

## 8 Exploded Parts Diagrams

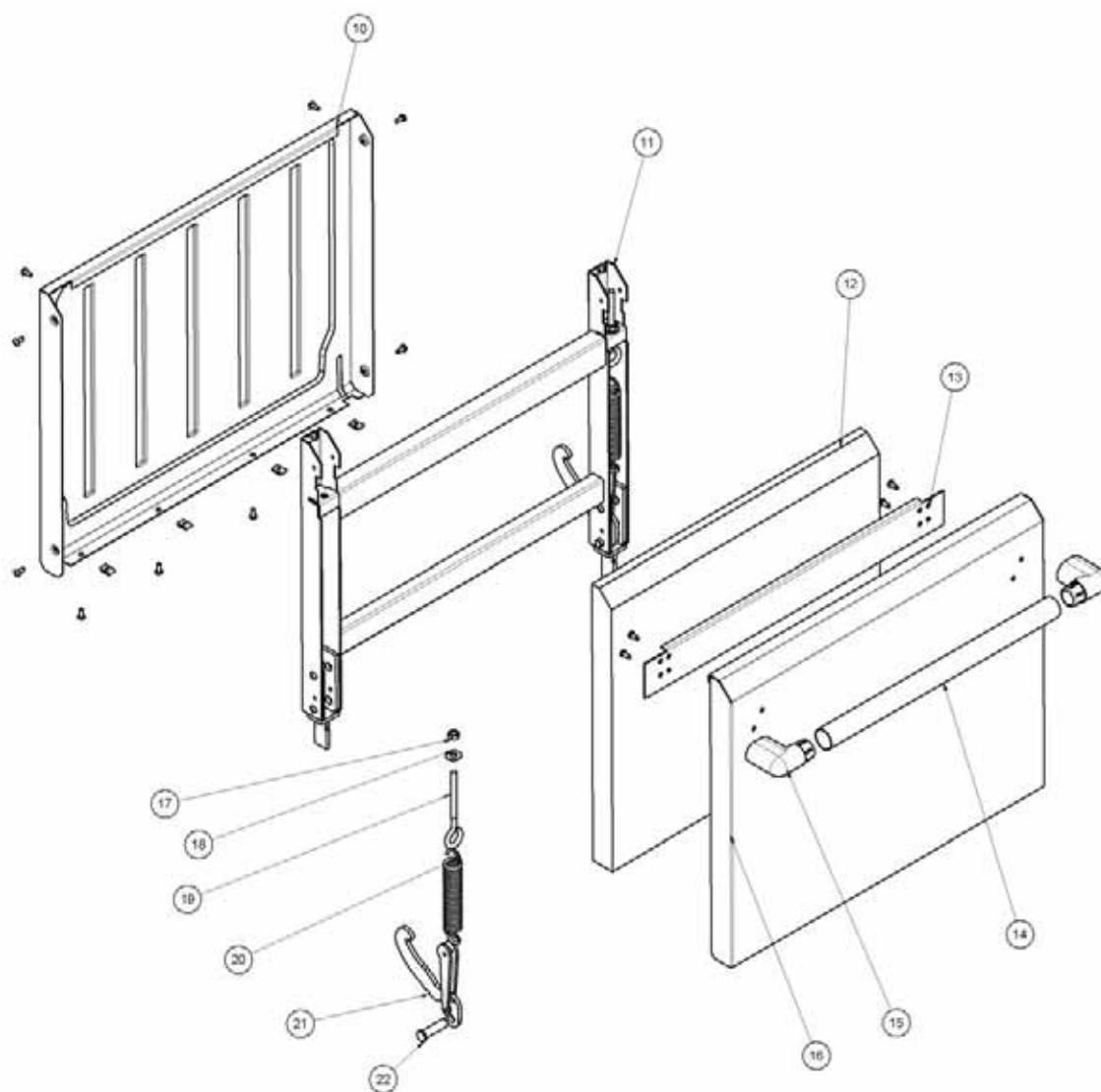
### 8.2 G54

#### 8.2.1 G54 Main Assembly



ITEM	PART No.	DESCRIPTION
1	228450	BACK PANEL
2	228810	SPLASHBACK
3	228851	POT STAND SPACER 750
4	230110	CONTROL PANEL
5	230282	SPILL TRAY 750mm WA
6	229890	SILL WA 750mm
7	228401	SIDE PANEL RH
8	228078	SIDE PANEL LH
9	227960	BLUESEAL BADGE

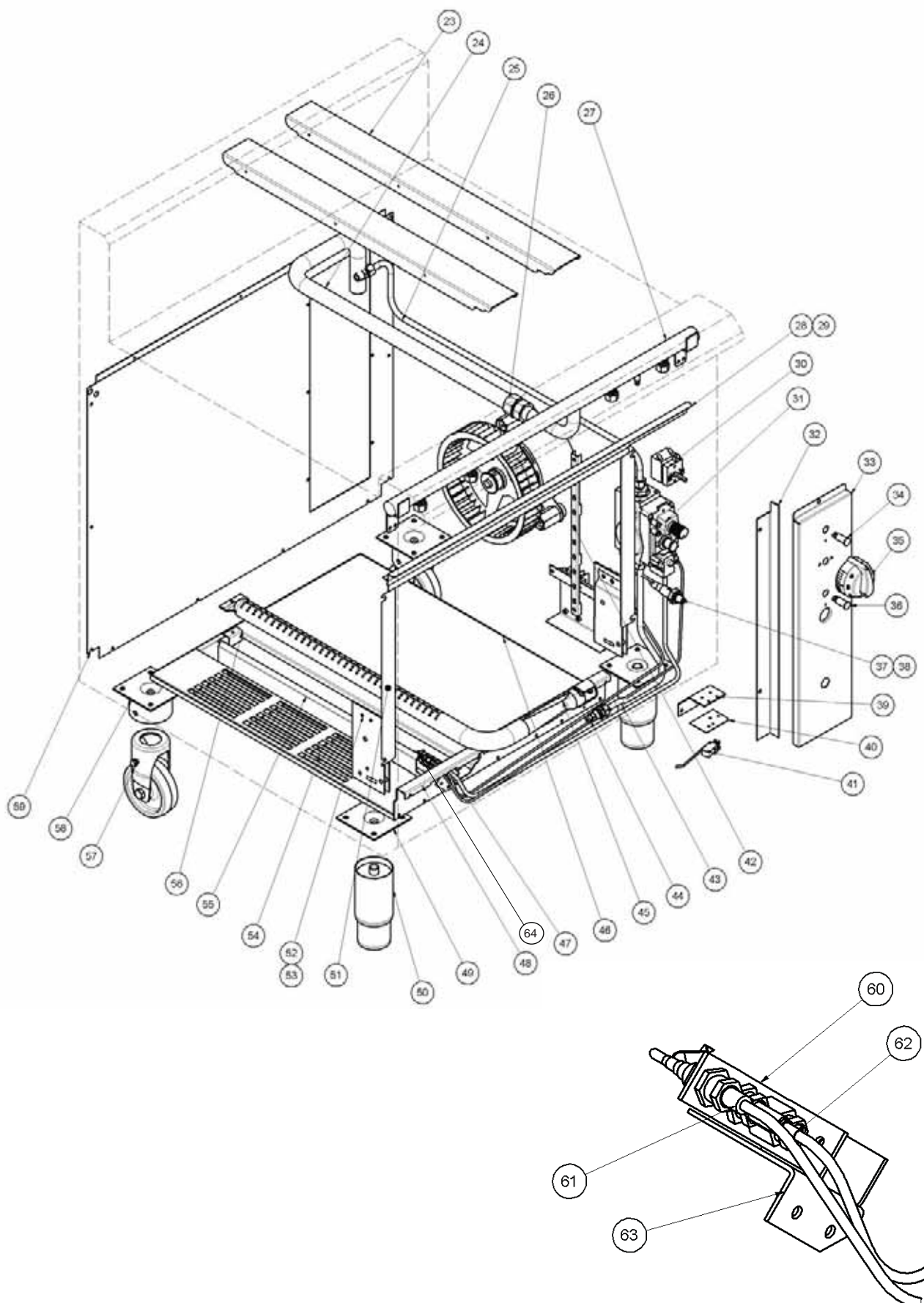
## 8.2.2 G54 Door Assembly



ITEM	PART No.	DESCRIPTION
10	228038	OVEN DOOR INNER (To Lot No 0837999)
	232864	OVEN DOOR INNER (From Lot No 0838000)
11	228040	DOOR FRAME (To Lot No 0837999)
	232833	DOOR FRAME (From Lot No 0838000)
12	228641	F/GLASS 520 x 460 x 38
13	228310	HANDLE STIFFENER
14	228023	DOOR HANDLE TUBE (To Lot No 0837999)
	232548	DOOR HANDLE TUBE (From Lot No 0838000)
15	237414	DOOR HANDLE SERVICE KIT (Includes 2 End Caps)
16	229889	OVEN DOOR OUTER (To Lot No 0837999)
	232863	OVEN DOOR OUTER (From Lot No 0838000)
17	044055	NUT M8 HEX MACHINE ZP
18	045030	WASHER 5/16 x 3/4 FLAT ZP
19	228481	DOOR EYEBOLT M8 x 125mm
20	228704	DOOR SPRING KIT ( <b>INCLUDES 2 SPRINGS</b> )
21	232402	DOOR HINGE KIT ( <b>INCLUDES 2 x ITEMS 21 &amp; 22</b> )
22	-----	PART OF 21 ABOVE
	232822	COMPLETE DOOR ASSEMBLY 750mm

## 8 Exploded Parts Diagrams

### 8.2.3 G54 Gas Assembly

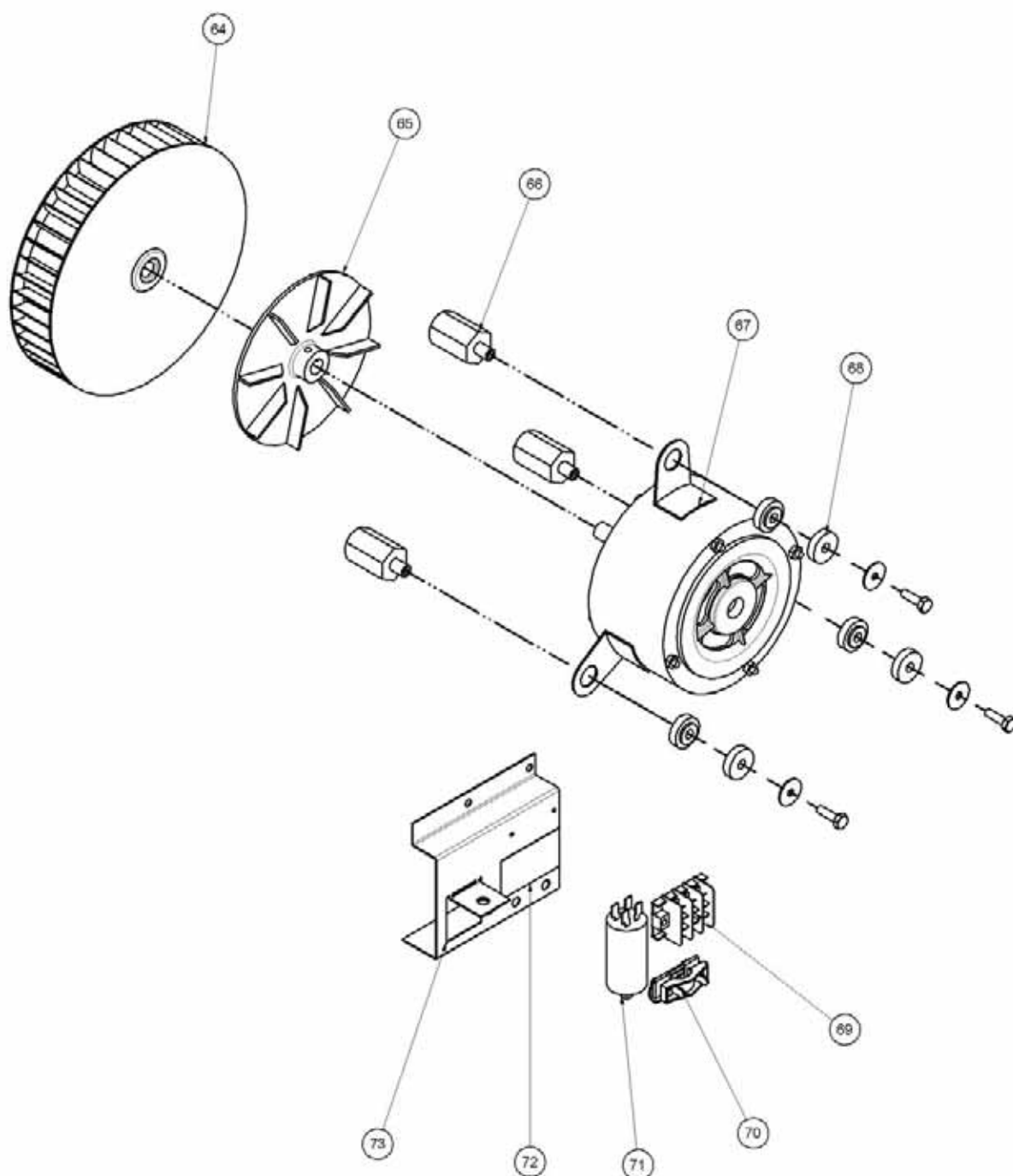


## 8.2.3 G54 Gas Assembly - Parts List (Cont'd)

ITEM	PART No.	DESCRIPTION
23	227185	POT STAND SUPPORT
24	227690	HOB - RANGE SUPPLY PIPE
25	230235	CONTROL SUPPLY PIPE
26	227330	UNION BRASS CONICAL ½ x ¾ BSPT
27	228610	MANIFOLD 750mm RANGE
28	228954	TOP TRIM
29	228888	DOOR TOP SEAL
30	011987	THERMOSTAT 50°- 320°C FAN SWCH
31	230312	GAS VALVE-NOVA KIT
32	228407	CONTROL PANEL GUIDE
33	230232	CONTROL PANEL
34	227963	NEON - ORANGE 4122000478
35	232234	KNOB BLUESEAL 6mm 300-50
36	228922	NEON - WHITE
37	227508	PIEZO IGNITOR M18
38	019407	HT CABLE
39	230071	MICROSWITCH MOUNTING BRACKET
40	230075	OVEN MICROSWITCH INSULATOR
41	228938	MICROSWITCH WORKED
42	017961	PHIAL GUARD
43	230263	FLEXTUBE DORMONT T6 x 18"
44	032260	INJECTOR 2.60mm <b>(NAT GAS)</b>
	032160	INJECTOR 1.60mm <b>(LPG / PROPANE)</b>
	032145	INJECTOR 1.45mm <b>(BUTANE)</b>
	032500	INJECTOR 5.00mm <b>(TOWN GAS)</b>
45	227933	OVEN BURNER
46	228351	INSULATION TRAY
47	230234	PILOT SUPPLY PIPE
48	229774	BASE GAS 750GC
49	227852	LEG PLATE
50	227850	LEG 150mm x Ø63.5
51	228885	DOOR SEAL SIDE DD
52	228024	DOOR HINGE MOUNTING LH
53	228031	DOOR HINGE MOUNTING RH
54	228768	BOTTOM BAFFLE
55	228352	BURNER SHIELD
56	228353	BURNER REAR SUPPORT
57	229674	REAR ROLLER
58	229671	LEG RING PLATE THREADED
59	228299	BACK PANEL 750
60	018691K	PILOT BURNER KIT
	026488	PILOT INJECTOR 0.35mm <b>(NAT GAS)</b>
	019217	PILOT INJECTOR 0.23mm <b>(LPG / PROPANE / BUTANE)</b>
	018067	PILOT INJECTOR 0.60mm <b>(TOWN GAS)</b>
61	020253	THERMOCOUPLE 1200mm
62	018744	ELECTRODE
63	228349	PILOT MOUTING BRACKET
	232211	CONTROL PANEL DRIP GUARD KIT (Not illustrated)
64	230661	PILOT SHIELD (Not Shown)
	228531	REGULATOR (Natural Gas / LPG Gas [Propane-Convertible] 3/4"BSP F/F,

## 8 Exploded Parts Diagrams

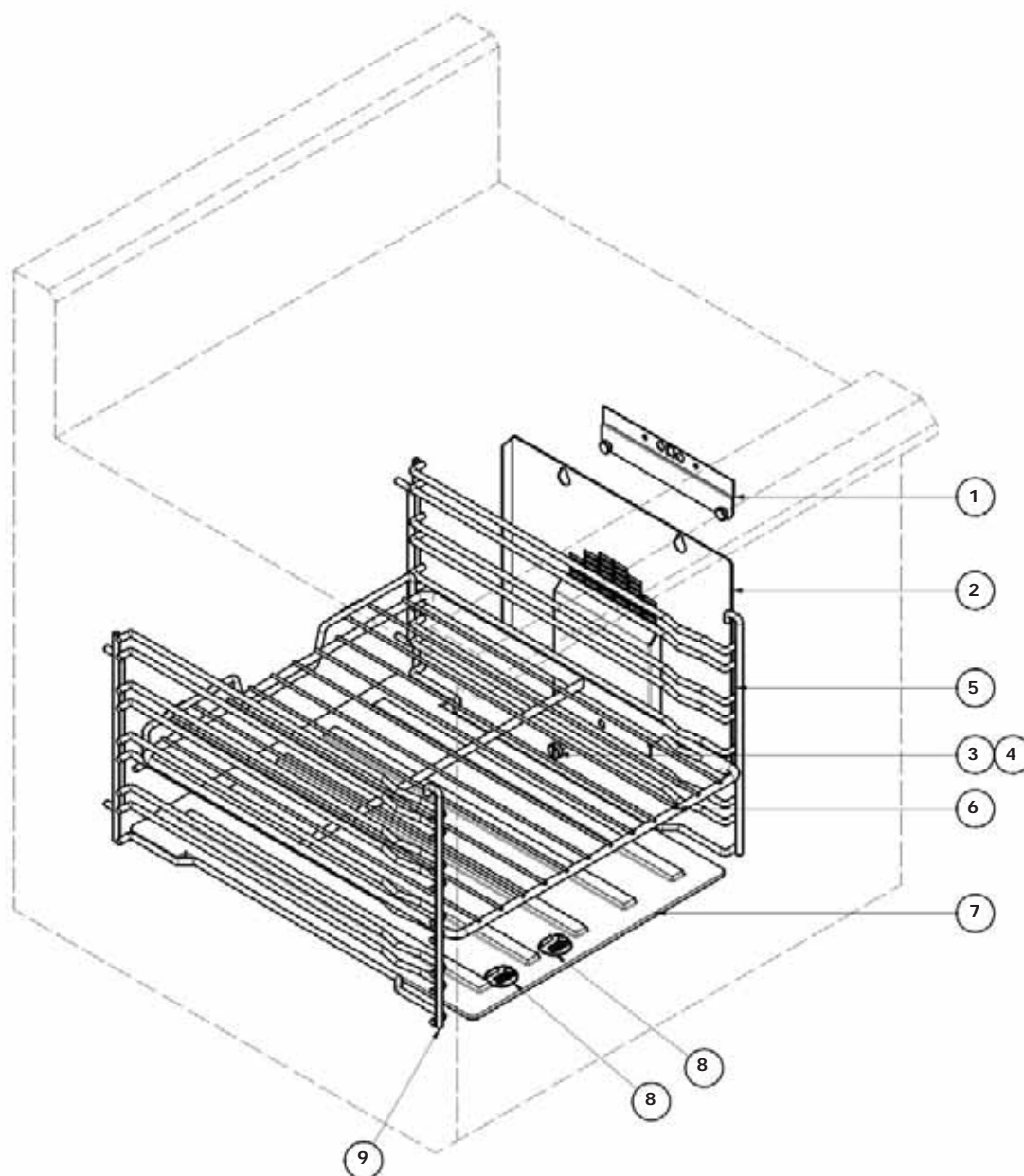
### 8.2.4 G54 Fan Motor Assembly



ITEM	PART No.	DESCRIPTION
64	228116	FAN WHEEL
65	010866	COOLING DISC - DRILLED ETC.
66	013627	MOTOR MOUNTING BUSH - PLATED
67	019479K	MOTOR KIT ( <b>INCLUDES ITEMS 65, 67, 68 &amp; 71</b> )
68	010859	MOUNTING - STEPPED
69	013586	TERMINAL BLOCK PA32
70	026161	CABLE CLAMP PA268RO
71	010909	CAPACITOR
72	019207	TERMINAL BLOCK LABEL
73	230256	ELECTRICAL GEAR PLATE



## 8.2.5 G54 Racks

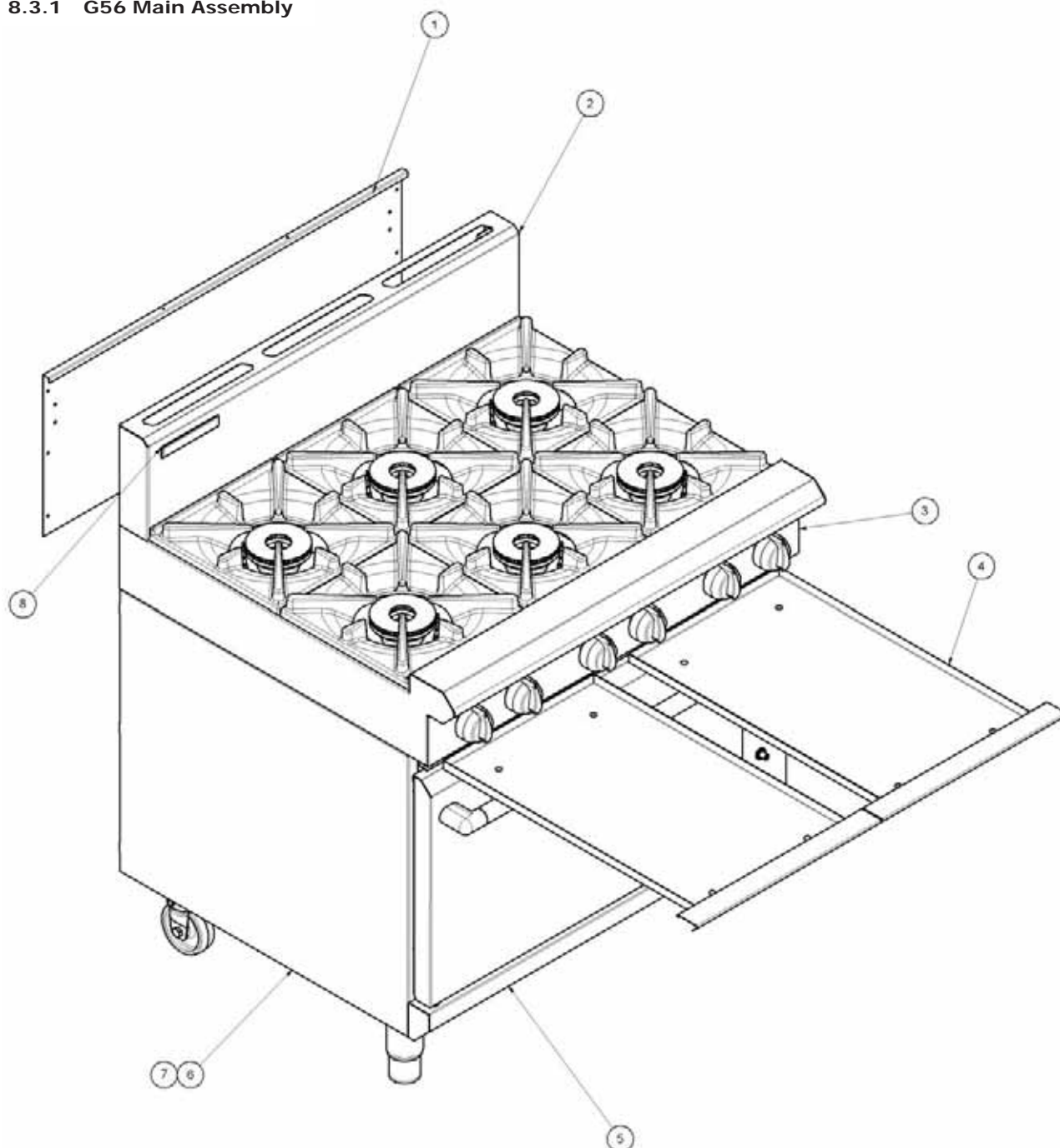


ITEM	PART No.	DESCRIPTION
1	232589	BAFFLE TOP SUPPORT WA (From Lot No. 0817xxx)
2	232603	FAN BAFFLE - GAS CONVECTION
3	44205	NUT SNU 0530 SPIRE ST (From Lot No. 0817xxx)
4	23068	SIDE RACK SCREW (From Lot No. 0817xxx)
5	227893	OVEN SIDE RACK RH (From Lot No. 0817xxx)
6	228106	OVEN RACK
7	228052	OVEN SOLE PLATE
8	230268	PILOT VIEWING HOLE LID
	748001	SCREW M5 x 16
	748016	NUT M5 NYLOC
9	227892	OVEN SIDE RACK LH
	232355	OVEN BAFFLE UPGRADE KIT (From Lot No. 0817xxx)

## 8 Exploded Parts Diagrams

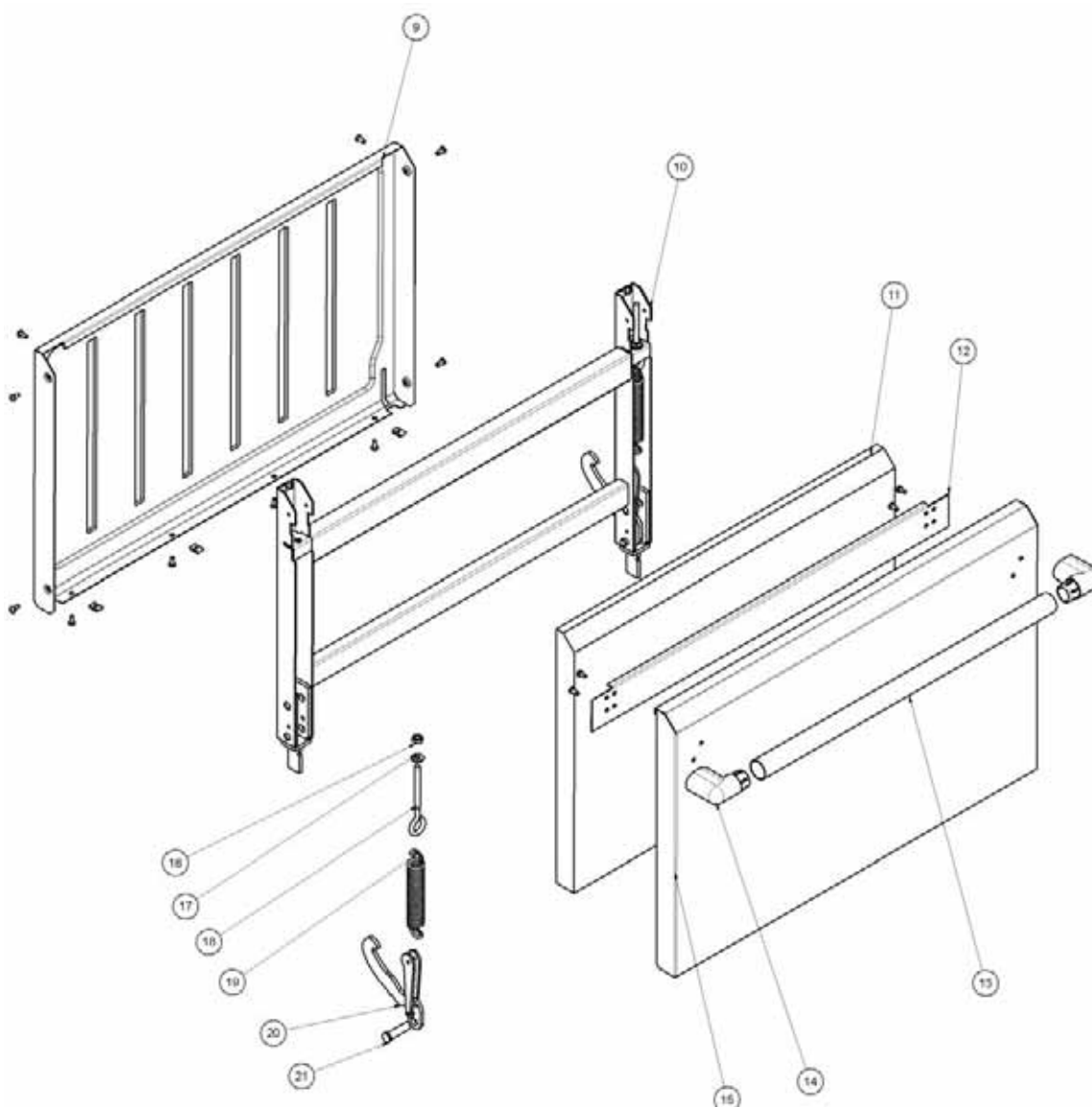
### 8.3 G56

#### 8.3.1 G56 Main Assembly



ITEM	PART No.	DESCRIPTION
1	227836	BACK PANEL
2	228669	SPLASHBACK
3	227537	CONTROL PANEL
4	230273	SPILL TRAY 450mm WA BSEAL (2 Piece Old Style).
	233515	SPILL TRAY 900mm WA BSEAL (1 Piece New Style).
5	229733	SILL WA 900mm
6	228401	SIDE PANEL RH
7	228078	SIDE PANEL LH
8	227960	BLUESEAL BADGE

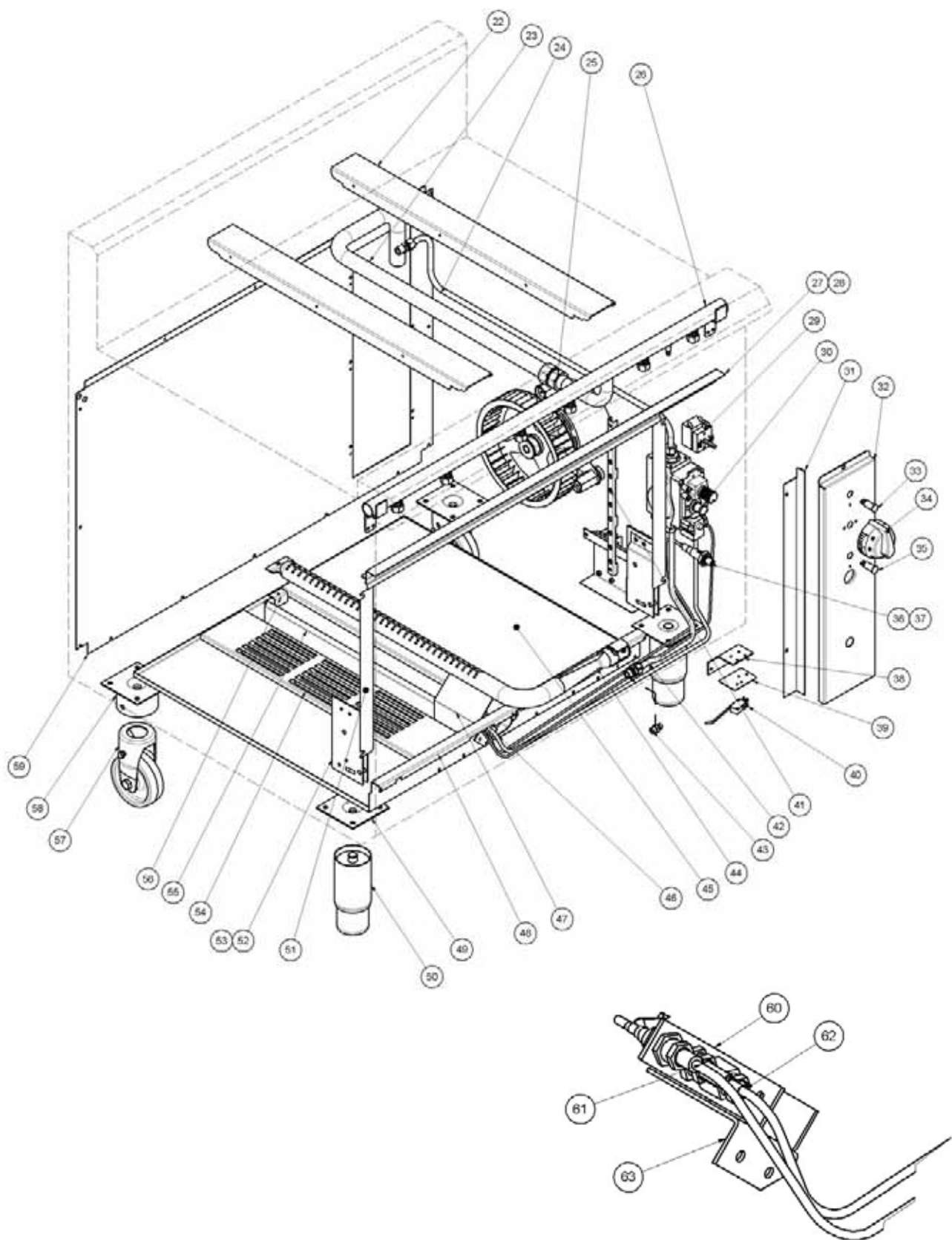
## 8.3.2 G56 Door Assembly



ITEM	PART No.	DESCRIPTION
9	227949	OVEN DOOR INNER (To Lot No 0837999)
	232812	OVEN DOOR INNER (From Lot No 0838000)
10	228042	DOOR FRAME (To Lot No 0837999)
	232813	DOOR FRAME (From Lot No 0838000)
11	228637	F/GLASS 670 x 460 x 38
12	228307	HANDLE STIFFENER
13	228021	DOOR HANDLE TUBE (To Lot No 0837999)
	232547	DOOR HANDLE TUBE (From Lot No 0838000)
14	237414	DOOR HANDLE SERVICE KIT (Includes 2 End Caps)
15	229732	OVEN DOOR OUTER (To Lot No 0837999)
	232840	OVEN DOOR OUTER (From Lot No 0838000)
16	044055	NUT M8 HEX MACHINE ZP
17	045030	WASHER 5/16 x 3/4 FLAT ZP
18	228481	DOOR EYEBOLT M8 x 125mm
19	228704	DOOR SPRING KIT ( <b>INCLUDES 2 SPRINGS</b> )
20	232402	DOOR HINGE KIT ( <b>INCLUDES 2 x ITEMS 20 &amp; 21</b> )
21	227968	PART OF 20 ABOVE
	232819	COMPLETE DOOR ASSEMBLY 900mm

## 8 Exploded Parts Diagrams

### 8.3.3 G56 Gas Assembly



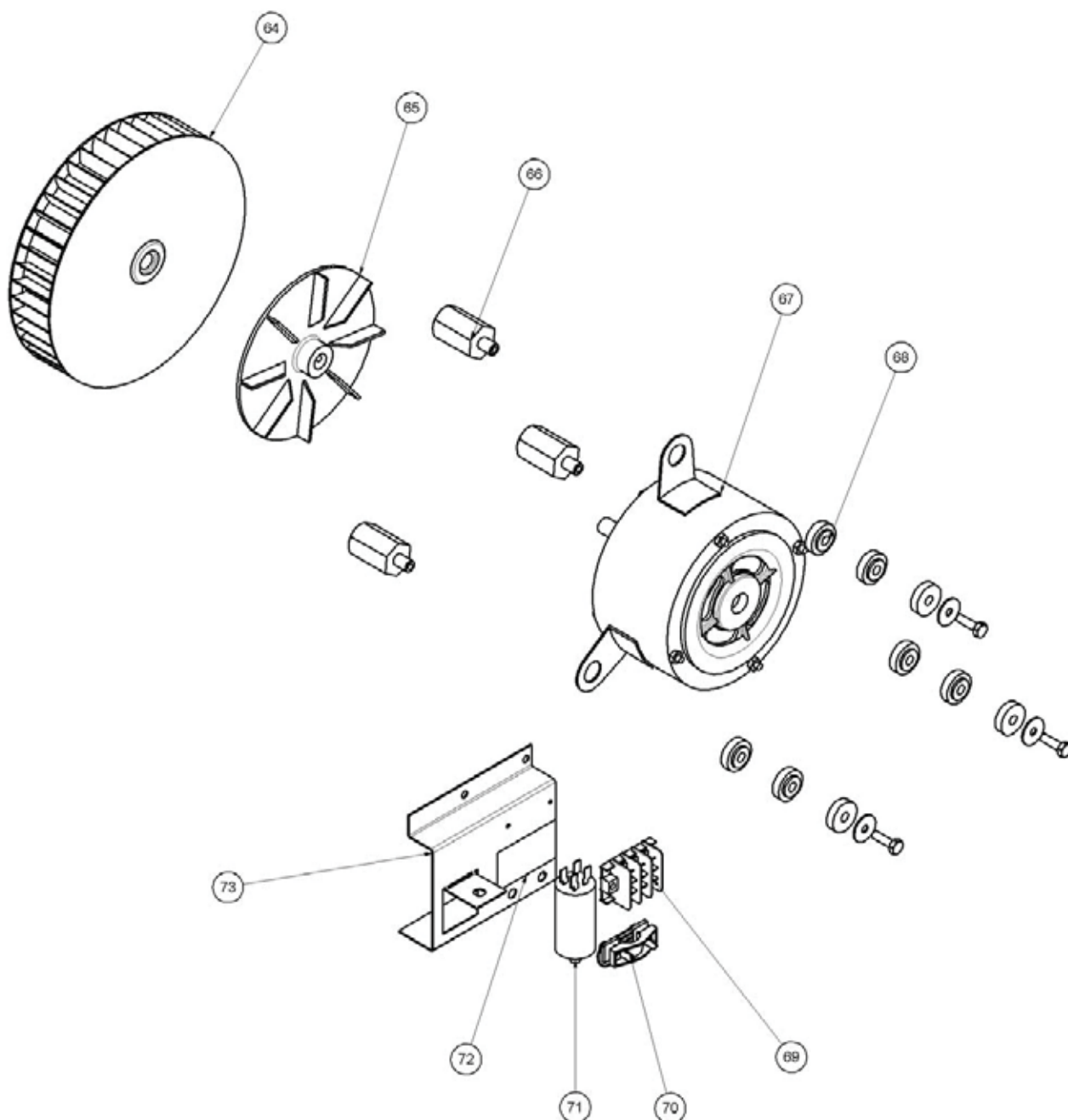
## 8.3.3 G56 Gas Assembly - Parts List (Cont'd)

ITEM	PART No.	DESCRIPTION
22	227185	POT STAND SUPPORT
23	227690	HOB - RANGE SUPPLY PIPE
24	230235	CONTROL SUPPLY PIPE
25	227330	UNION BRASS CONICAL ½ x ¾ BSPT
26	227278	MANIFOLD 900mm RANGE
27	228504	TOP TRIM
28	228505	DOOR TOP SEAL
29	011987	THERMOSTAT 50°- 320°C FAN SWCH
30	230312	GAS VALVE-NOVA KIT
31	228407	CONTROL PANEL GUIDE
32	230232	CONTROL PANEL
33	227963	NEON - ORANGE 4122000478
34	232234	KNOB BLUESEAL 6mm 300-50
35	228922	NEON - WHITE
36	227508	PIEZO IGNITOR M18
37	019407	HT CABLE
38	230071	MICROSWITCH MOUNTING BRACKET
39	230075	OVEN MICROSWITCH INSULATOR
40	228938	MICROSWITCH WORKED
41	017961	PHIAL GUARD
42	230263	FLEXTUBE DORMONT T6 x 18"
43	032260	INJECTOR 2.60mm <b>(NAT GAS)</b>
	032160	INJECTOR 1.60mm <b>(LPG / PROPANE)</b>
	032145	INJECTOR 1.45mm <b>(BUTANE)</b>
	032500	INJECTOR 5.00mm <b>(TOWN GAS )</b>
44	227933	OVEN BURNER G56
45	228351	INSULATION TRAY
46	230234	PILOT SUPPLY PIPE
47	230661	PILOT SHIELD
48	229795	BASE GAS 900GC
49	227852	LEG PLATE
50	227850	LEG 150mm x Ø63.5
51	228885	DOOR SEAL SIDE DD
52	228024	DOOR HINGE MOUNTING LH
53	228031	DOOR HINGE MOUNTING RH
54	228768	BOTTOM BAFFLE
55	228352	BURNER SHEILD
56	228353	BURNER REAR SUPPORT
57	229674	REAR ROLLER
58	229671	LEG RING PLATE THREADED
59	227104	BACK PANEL 900mm
60	018691K	PILOT BURNER KIT
	026488	PILOT INJECTOR 0.35mm <b>(NAT GAS)</b>
	019217	PILOT INJECTOR 0.23mm <b>(LPG / PROPANE / BUTANE)</b>
	018067	PILOT INJECTOR 060mm <b>(TOWN GAS)</b>
61	020253	THERMOCOUPLE 1200mm
62	018744	ELECTRODE
63	228349	PILOT MOUTING BRACKET
	232211	CONTROL PANEL DRIP GUARD KIT (not illustrated)
	228531	REGULATOR (Natural Gas / LPG Gas [Propane-Convertible) 3/4"BSP F/F,



## 8 Exploded Parts Diagrams

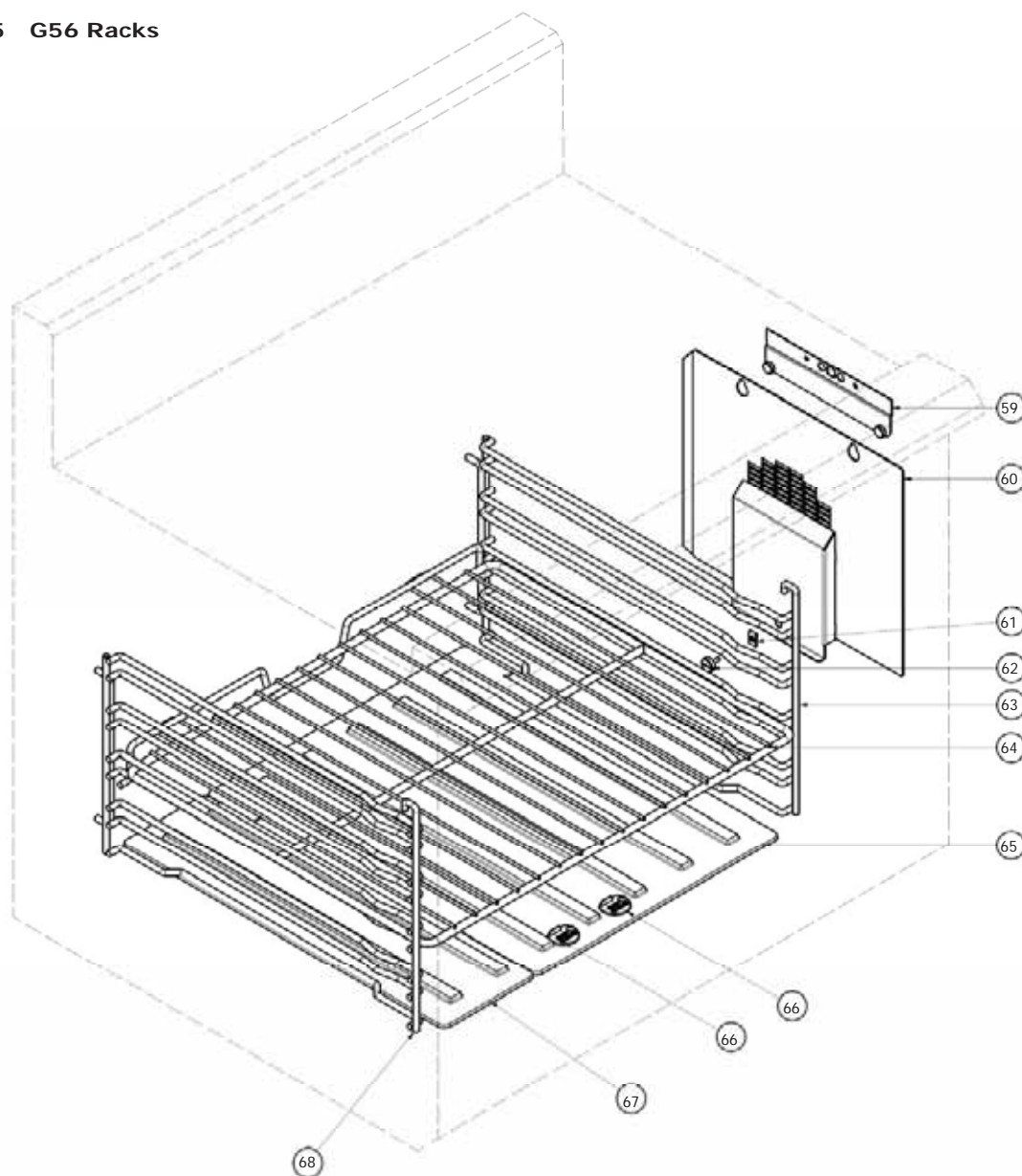
### 8.3.4 G56 Fan Motor Assembly



ITEM	PART No.	DESCRIPTION
64	228116	FAN WHEEL
65	010866	COOLING DISC - DRILLED ETC.
66	013627	MOTOR MOUNTING BUSH - PLATED
67	019479K	MOTOR KIT <b>(INCLUDES ITEMS 65, 67, 68 &amp; 71)</b>
68	010859	MOUNTING - STEPPED
69	013586	TERMINAL BLOCK PA32
70	026161	CABLE CLAMP PA268RO
71	010909	CAPACITOR
72	019207	TERMINAL BLOCK LABEL
73	230256	ELECTRICAL GEAR PLATE



## 8.3.5 G56 Racks

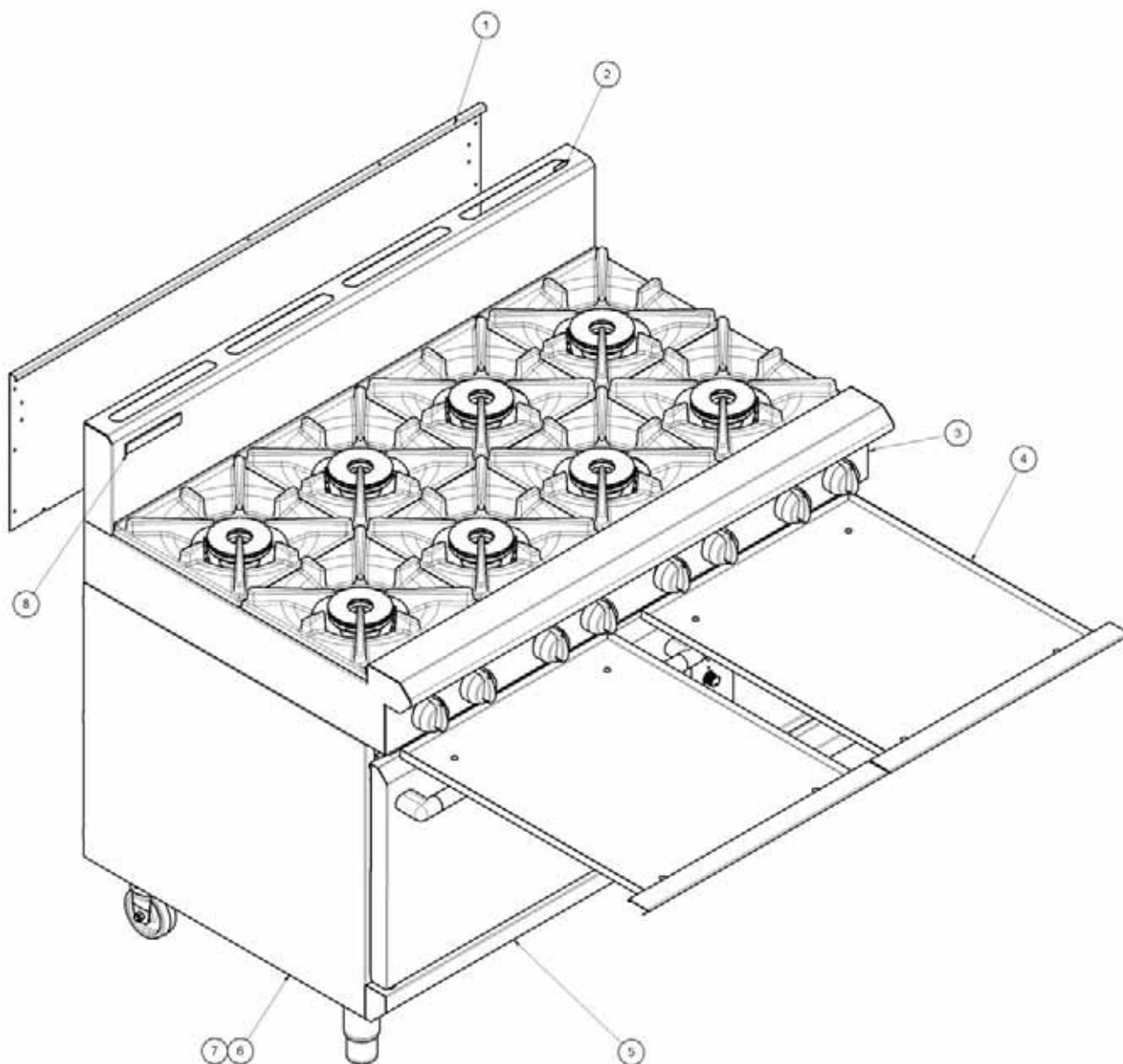


ITEM	PART No.	DESCRIPTION
59	232589	BAFFLE TOP SUPPORT WA (From Lot No. 0817xxx)
60	232603	FAN BAFFLE - GAS CONVECTION
61	44205	NUT SNU 0530 SPIRE ST (From Lot No. 0817xxx)
62	23068	SIDE RACK SCREW (From Lot No. 0817xxx)
63	227893	OVEN SIDE RACK RH (From Lot No. 0817xxx)
64	227896	OVEN RACK
65	228052	OVEN SOLE PLATE
66	230268	PILOT VIEWING HOLE LID
	748001	SCREW M5 x 16
	748016	NUT M5 NYLOC
67	228054	OVEN SOLE PLATE EXTENSION
68	227892	OVEN SIDE RACK LH
	232355	OVEN BAFFLE UPGRADE KIT (From Lot No. 0817xxx)

## 8 Exploded Parts Diagrams

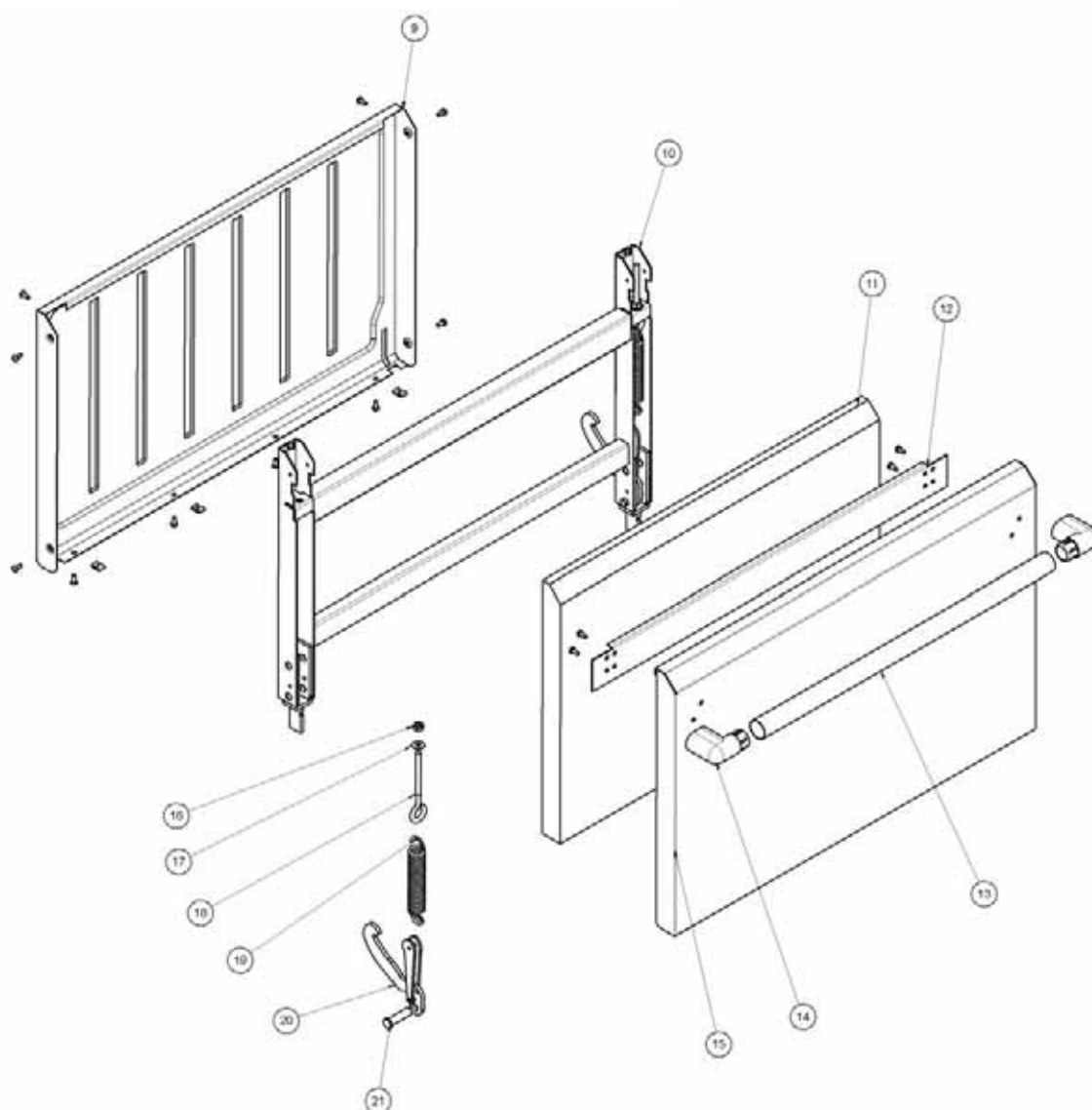
### 8.4 G58

#### 8.4.1 G58 Main Assembly



ITEM	PART No.	DESCRIPTION
1	228420	BACK PANEL
2	228662	SPLASHBACK
3	227536	CONTROL PANEL
4	230277	SPILL TRAY 600mm WA BSEAL (2 Piece Old Style).
	233517	SPILL TRAY WA 1200mm LH, BSEAL (1 Piece New Style).
	233518	SPILL TRAY WA 1200mm RH, BSEAL (1 Piece New Style).
5	229892	SILL WA 1200mm
6	228401	SIDE PANEL RH
7	228078	SIDE PANEL LH
8	227960	BLUESEAL BADGE

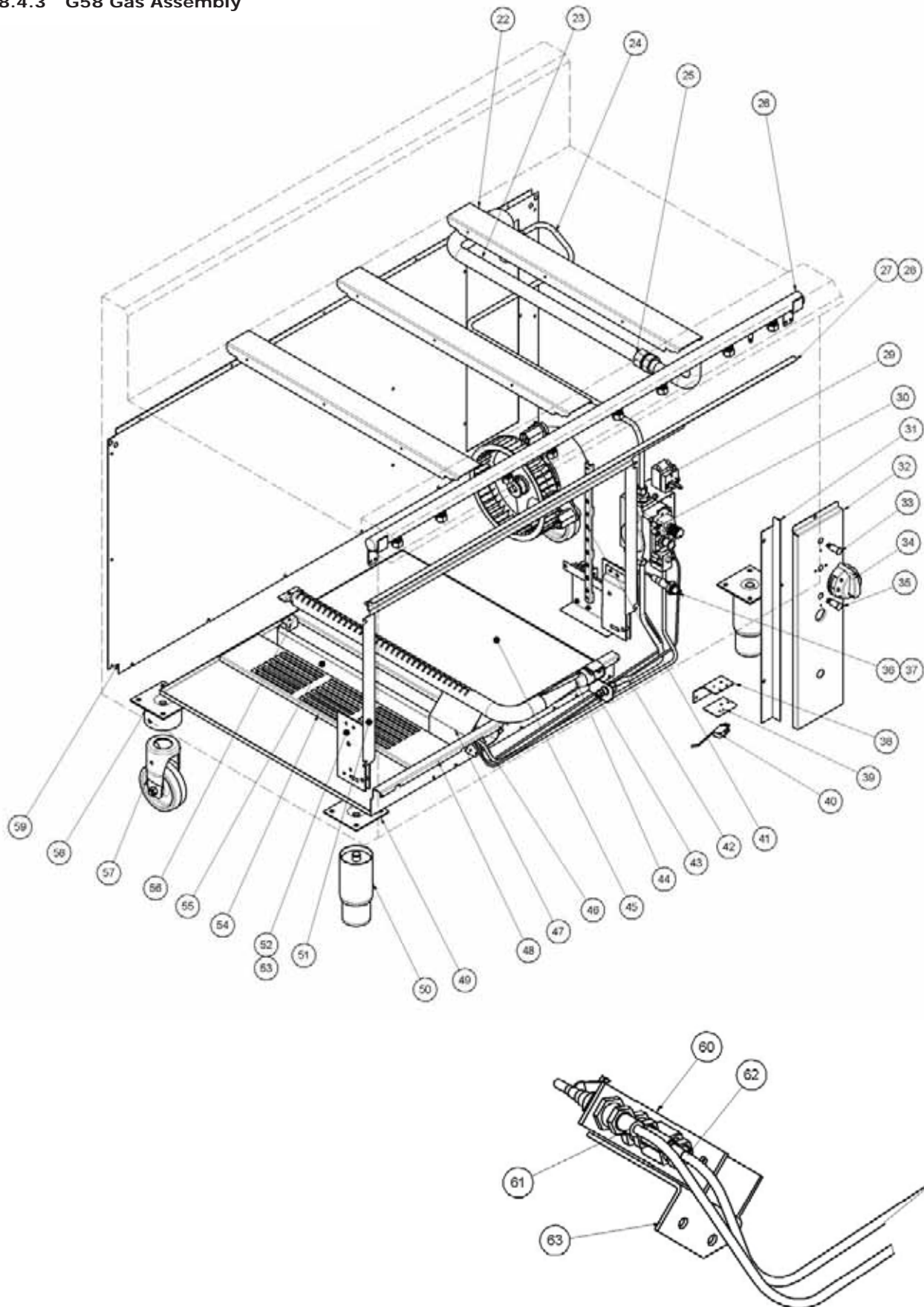
## 8.4.2 G58 Door Assembly



ITEM	PART No.	DESCRIPTION
9	227949	OVEN DOOR INNER (To Lot No 0837999)
	232812	OVEN DOOR INNER (From Lot No 0838000)
10	228042	DOOR FRAME (To Lot No 0837999)
	232813	DOOR FRAME (From Lot No 0838000)
11	228637	F/GLASS 670 x 460 x 38
12	228307	HANDLE STIFFENER
13	228021	DOOR HANDLE TUBE (To Lot No 0837999)
	232547	DOOR HANDLE TUBE (From Lot No 0838000)
14	237414	DOOR HANDLE SERVICE KIT (Includes 2 End Caps)
15	229732	OVEN DOOR OUTER (To Lot No 0837999)
	232840	OVEN DOOR OUTER (From Lot No 0838000)
16	044055	NUT M8 HEX MACHINE ZP
17	045030	WASHER 5/16 x 3/4 FLAT ZP
18	228481	DOOR EYEBOLT M8 x 125mm
19	228704	DOOR SPRING KIT <b>(INCLUDES 2 SPRINGS)</b>
20	232402	DOOR HINGE KIT (INCLUDES 2 x ITEMS 20 & 21)
21	227968	PART OF 20 ABOVE
	232819	COMPLETE DOOR ASSEMBLY 900mm

## 8 Exploded Parts Diagrams

### 8.4.3 G58 Gas Assembly



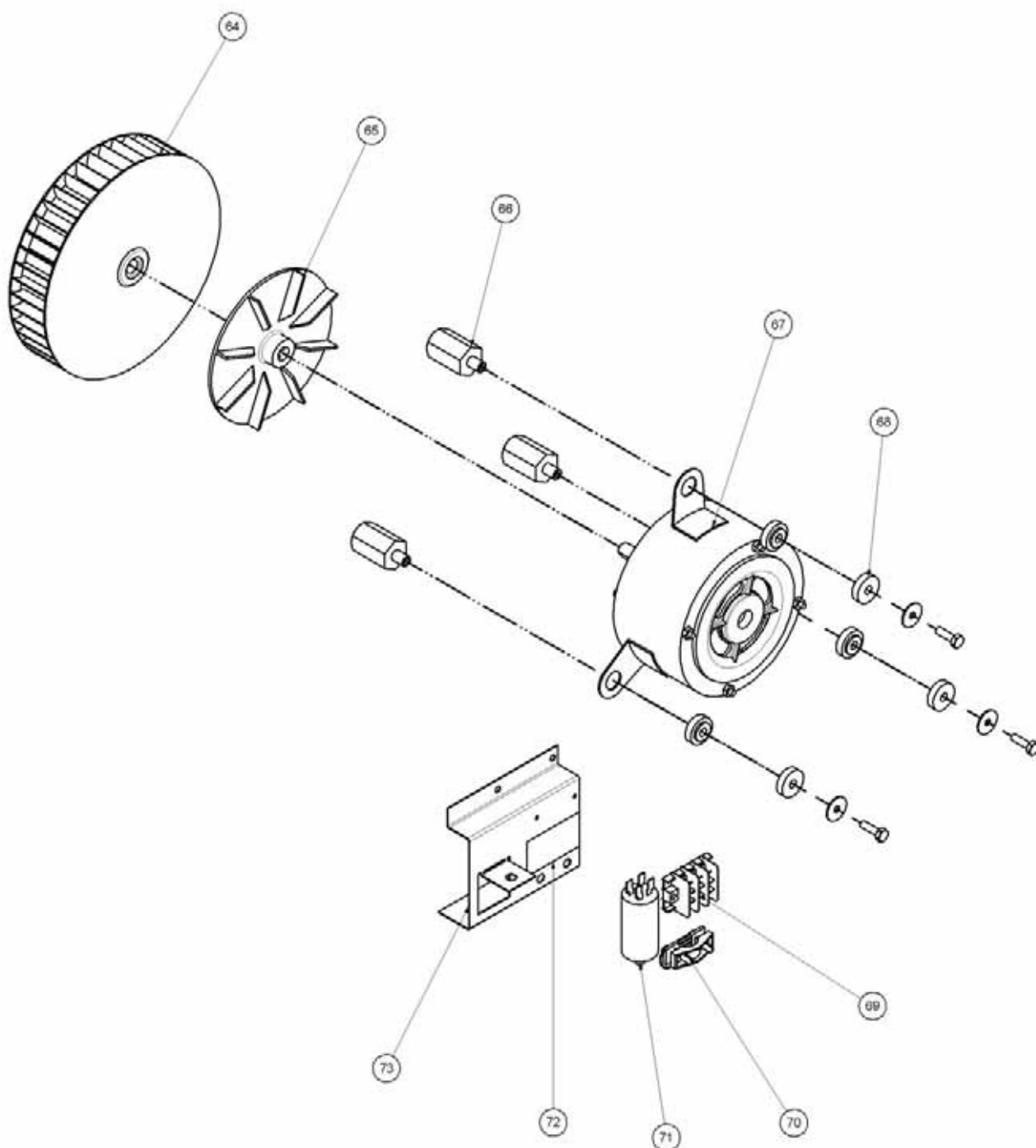
## 8.4.3 G58 Gas Assembly - Parts List (Cont'd)

ITEM	PART No.	DESCRIPTION
22	227185	POT STAND SUPPORT
23	227690	HOB - RANGE SUPPLY PIPE
24	230259	CONTROL SUPPLY PIPE
25	227330	UNION BRASS CONICAL ½ x ¾ BSPT
26	227279	MANIFOLD 1200mm
27	228534	TOP TRIM
28	228505	DOOR TOP SEAL
29	011987	THERMOSTAT 50° - 320°C FAN SWITCH
30	230312	GAS VALVE-NOVA KIT
31	228407	CONTROL PANEL GUIDE
32	230232	CONTROL PANEL
33	227963	NEON - ORANGE 4122000478
34	232234	KNOB BLUESEAL 6mm 300-50
35	228922	NEON - WHITE
36	227508	PIEZO IGNITOR M18
37	019407	HT CABLE
38	230071	MICROSWITCH MOUNTING BRACKET
39	230075	OVEN MICROSWITCH INSULATOR
40	228938	MICROSWITCH WORKED
41	017961	PIAL GUARD
42	230263	FLEXTUBE DORMONT T6 x 18"
43	032260	INJECTOR 2.60mm <b>(NAT GAS)</b>
	032160	INJECTOR 1.60mm <b>(LPG / PROPANE)</b>
	032145	INJECTOR 1.45mm <b>(BUTANE)</b>
	032500	INJECTOR 5.00mm <b>(TOWN GAS )</b>
44	227933	OVEN BURNER G56
45	228351	INSULATION TRAY
46	230234	PILOT SUPPLY PIPE
47	230661	PILOT SHIELD
48	229795	BASE GAS 900GC
49	227852	LEG PLATE
50	227850	LEG 150mm x Ø63.5
51	228885	DOOR SEAL SIDE DD
52	228024	DOOR HINGE MOUNTING LH
53	228031	DOOR HINGE MOUNTING RH
54	228768	BOTTOM BAFFLE
55	228352	BURNER SHEILD
56	228353	BURNER REAR SUPPORT
57	229674	REAR ROLLER
58	229671	LEG RING PLATE THREADED
59	227177	BACK PANEL 1200mm
60	018691K	PILOT BURNER KIT
	026488	PILOT INJECTOR 0.35mm <b>(NAT GAS)</b>
	019217	PILOT INJECTOR 0.23mm <b>(LPG / PROPANE / BUTANE)</b>
	018067	PILOT INJECTOR 0.60mm <b>(TOWN GAS)</b>
61	020253	THERMOCOUPLE 1200mm
62	018744	ELECTRODE
63	228349	PILOT MOUTING BRACKET
	232211	CONTROL PANEL DRIP GUARD KIT (not illustrated)
	228531	REGULATOR (Natural Gas / LPG Gas [Propane] - Convertible) 3/4"BSP F/F,



## 8 Exploded Parts Diagrams

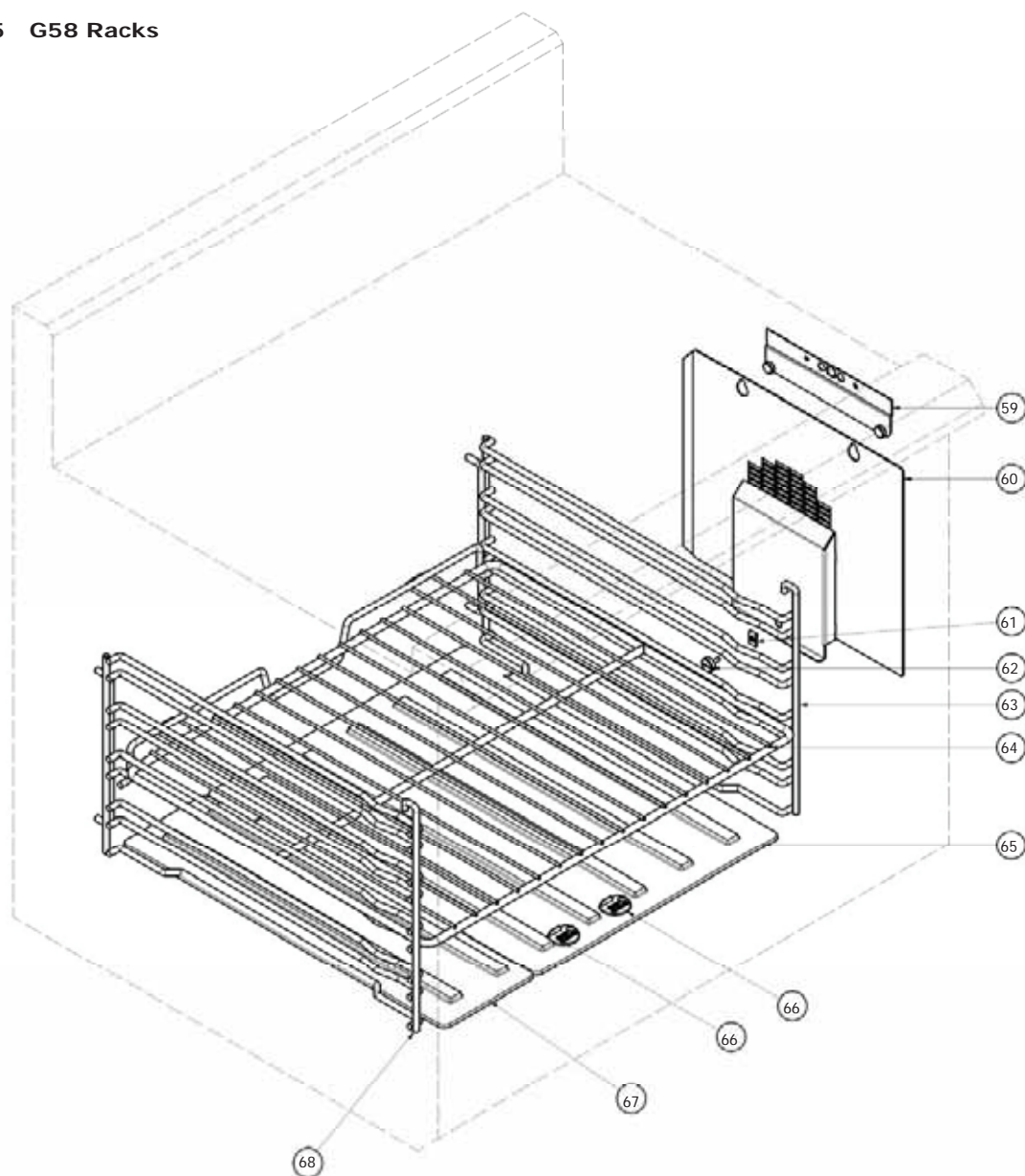
### 8.4.4 G58 Fan Motor Assembly



ITEM	PART No.	DESCRIPTION
64	228116	FAN WHEEL
65	010866	COOLING DISC - DRILLED ETC.
66	013627	MOTOR MOUNTING BUSH - PLATED
67	019479K	MOTOR KIT <b>(INCLUDES ITEMS 65, 67,68 &amp; 71)</b>
68	010859	MOUNTING - STEPPED
69	013586	TERMINAL BLOCK PA32
70	026161	CABLE CLAMP PA268RO
71	010909	CAPACITOR
72	019207	TERMINAL BLOCK LABEL
73	230256	ELECTRICAL GEAR PLATE



## 8.4.5 G58 Racks



ITEM	PART No.	DESCRIPTION
59	232589	BAFFLE TOP SUPPORT WA (From Lot No. 0817xxx)
60	232603	FAN BAFFLE - GAS CONVECTION
61	44205	NUT SNU 0530 SPIRE ST (From Lot No. 0817xxx)
62	23068	SIDE RACK SCREW (From Lot No. 0817xxx)
63	227893	OVEN SIDE RACK RH (From Lot No. 0817xxx)
64	227896	OVEN RACK
65	228052	OVEN SOLE PLATE
66	230268	PILOT VIEWING HOLE LID
	748001	SCREW M5 X 16
	748016	NUT M5 NYLOC
67	228054	OVEN SOLE PLATE EXTENSION
68	227892	OVEN SIDE RACK LH
	232355	OVEN BAFFLE UPGRADE KIT (From Lot No. 0817xxx)