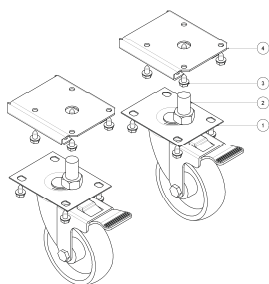


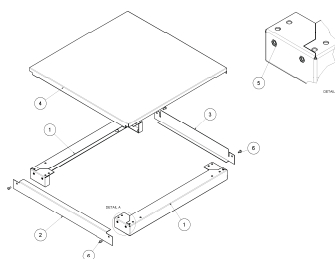
## GAS CONVERSION KITS INDEX

MODEL TYPE	CONVERT TO	CONVERSION KIT
FN8130GHPO FRYER	LPG	022695
	NAT	022696

## ACCESSORIES



Castor Kit  
Part No. 228807



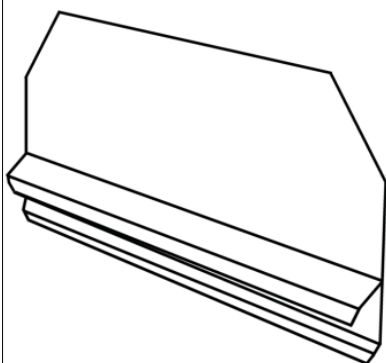
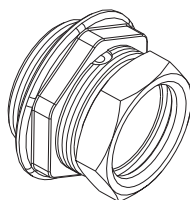
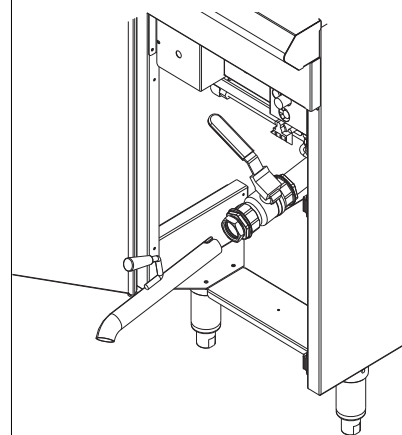
Plinth Kit  
Part No. 228794

Splashguard

Fryer

To Cooktop Open Burners  
To Target Top  
To Cooktop Electric

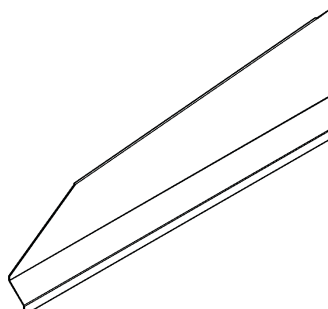
LH (Part No. 228898)  
RH (Part No. 228899)

Drain Adaptor  
(Part No. 024705)Drain Extension Kit  
(Part No. 024710)Splashguard

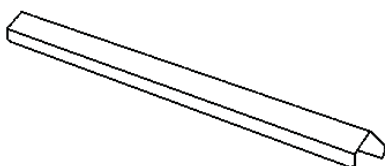
Fryer

To Cooktop Griddle.  
To Chargrill.  
To Griddle.  
To Griddle Toaster.  
To Cooktop Electric-Griddle.

LH (Part No. 228894).  
RH (Part No. 228895).

Joining Strip

Fryer to Fryer  
(Part No. 228600)



## 8 Exploded Parts Diagrams

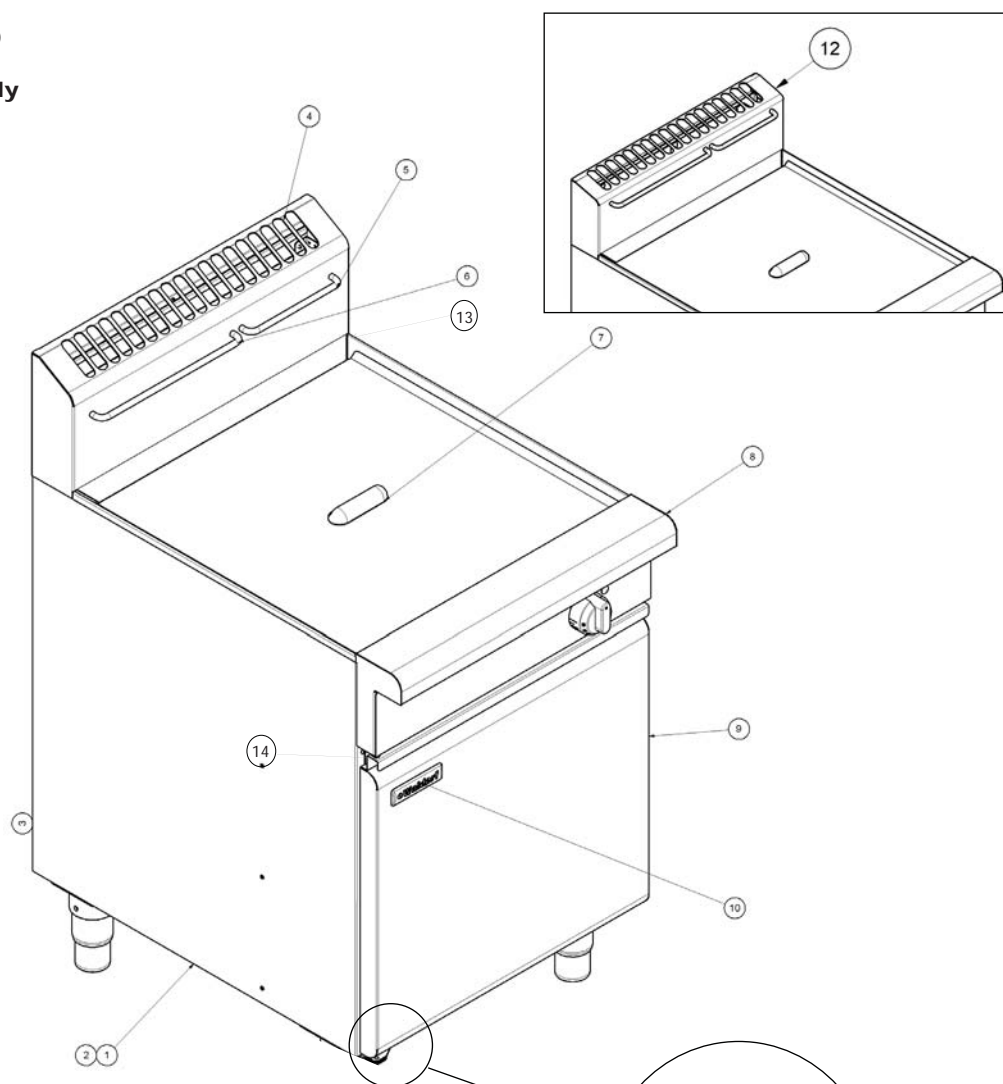
---

Section	Page No.
<b>8.1 FN8130GHPO Fryer .....</b>	<b>25</b>
8.1.1 Fryer Assembly.....	25
8.1.2 FN8130GHPO - Door Assembly.....	26
8.1.3 FN8130GHPO - Main Assembly.....	27
8.1.4 FN8130GHPO - Electrical Assembly (Up to Lot No. 1113999) .....	28
8.1.5 FN8130GHPO - Electrical Assembly (From Lot No. 1114000) .....	29
8.1.6 FN8130GHPO - Gas Assembly.....	30

8

## 8.1 FN8130HPO

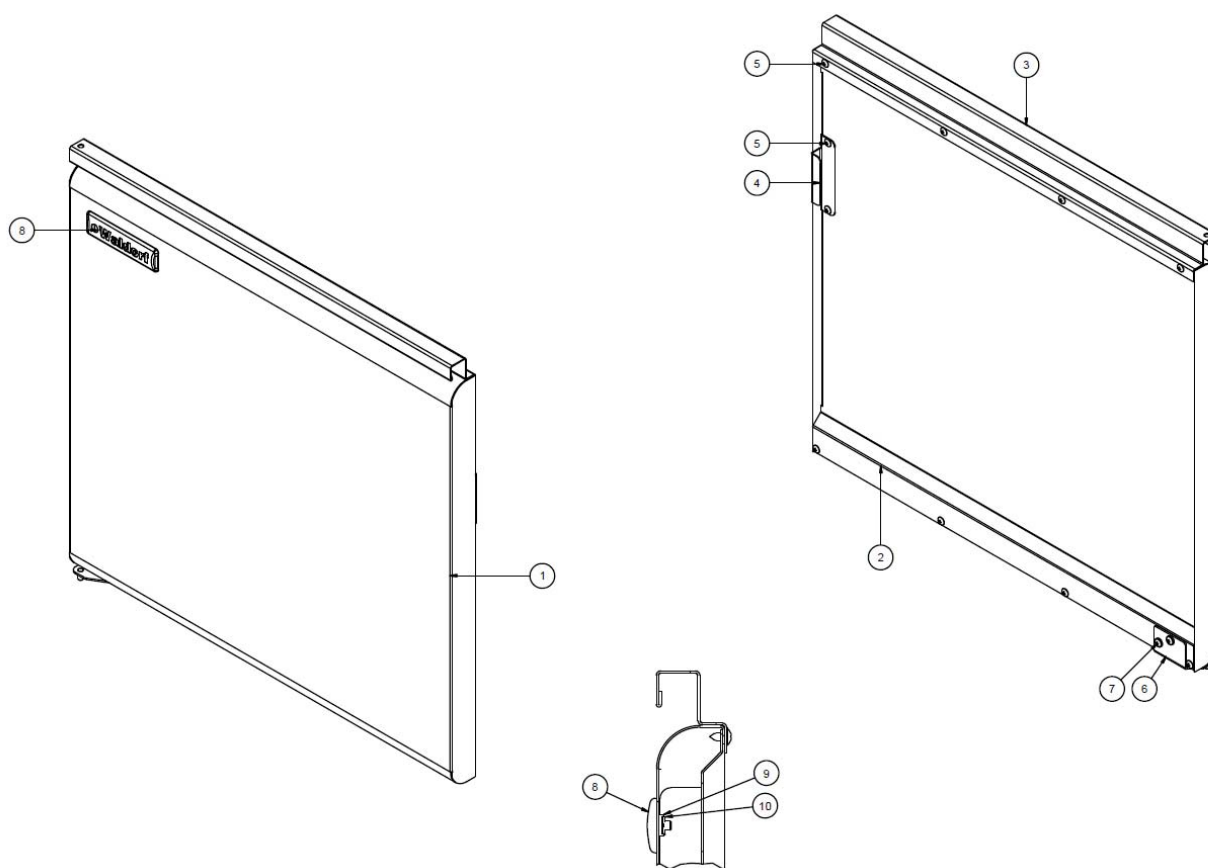
### 8.1.1 Fryer Assembly



ITEM	PART NO	DESCRIPTION
1	227511	FRYER SIDE PANEL RH
2	227512	FRYER SIDE PANEL LH
3	002414	POWER FLEX/MOULDED PLUG
	025951	TERMINAL BLOCK - 3 WAY
	026161	CABLE CLAMP PA268RO
4	227761	SPLASHBACK
5	227748	BASKET HANGER 195mm
6	227747	BASKET HANGER 305mm
7	228762	LID 600 FRYER
8	227904	HOB FRONT WA WLDF
9	235302	FRYER DOOR ASSY 600 (STAINLESS)
	235959	FRYER DOOR ASSY 600 (BLACK)
	237706	FRYER DOOR ASSY 600 (BURGUNDY)
	237612	FRYER DOOR ASSY 600 (CHILLI RED)
10	227618	WALDORF BADGE
11a	228308	HINGE PIVOT WA
11b	228301	HINGE BUSH
11c	228300	HINGE PLATE
12	233701	LB SPLASH BACK
13	227228	FRYER TANK
14	228414	TOP PIVOT STUD
	045411	M5 SPRING WASHER
	044015	3/16 BSW NUT

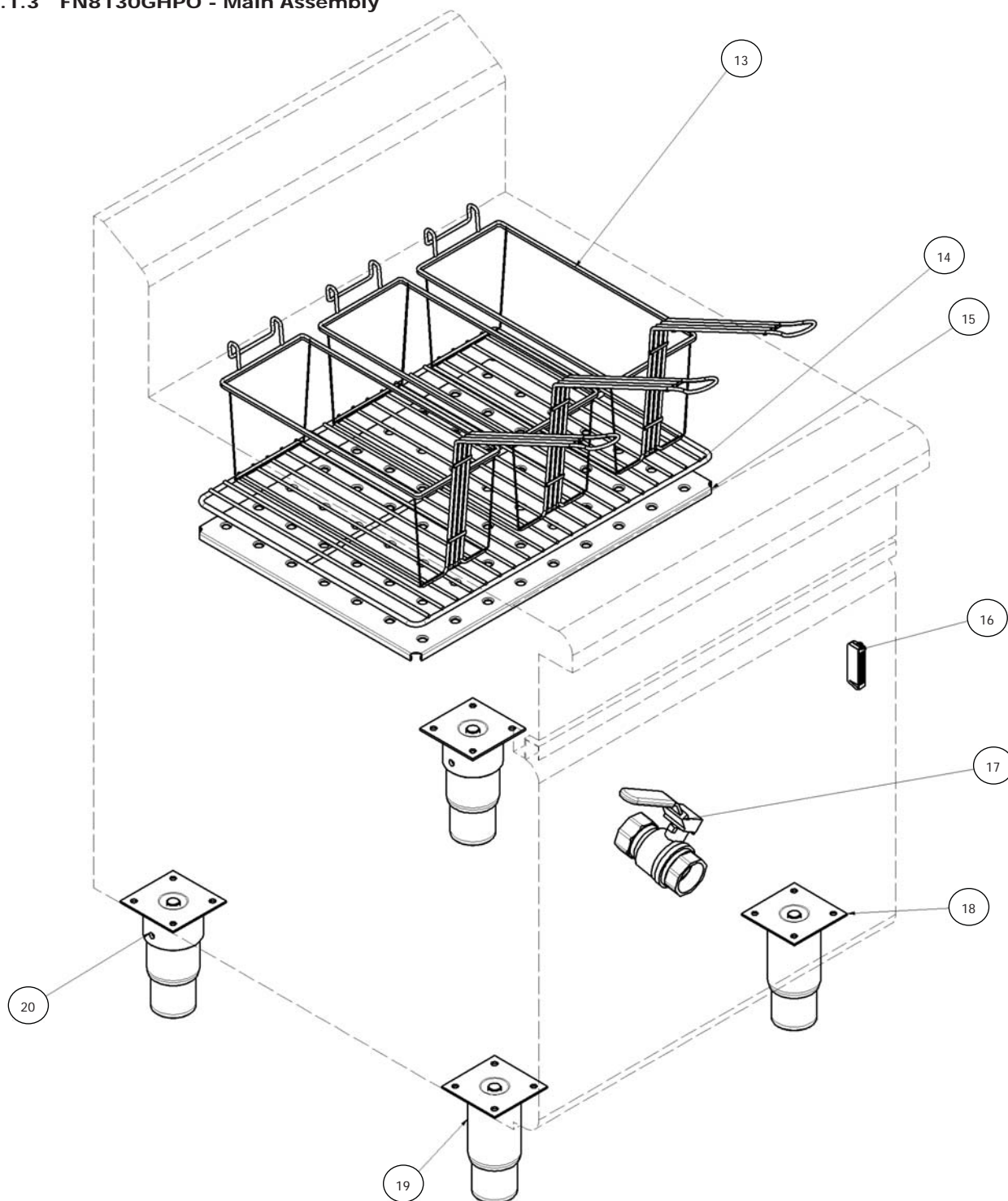
## 8 Exploded Parts Diagrams

### 8.1.2 FN8130GHPO - Door Assembly



DOOR COMPONENTS		
ITEM	PART No.	DESCRIPTION
1	227461	DOOR OUTER 600 WALDORF (STAINLESS)
	235690	DOOR OUTER 600 WALDORF (BLACK)
	237104	DOOR OUTER 600 WALDORF (BURGUNDY)
	237613	DOOR OUTER 600 WALDORF (CHILLI RED)
2	227462	DOOR INNER 600 WALDORF
3	227460	DOOR HANDLE
4	227466	DOOR CATCH RECEIVER
5	041045	SCREW 8 x 3/8" TRUSS HD PHL NP
6	228308	HINGE PIVOT WA
7	041043	SCREW M5 x 12 TAPTITE PH NP
8	227618	WALDORF BADGE
9	045800	WASHER NEOPRENE M5 x 12 x 3
10	044214	SPIRE PUSH-ON FIX Ø 5.0

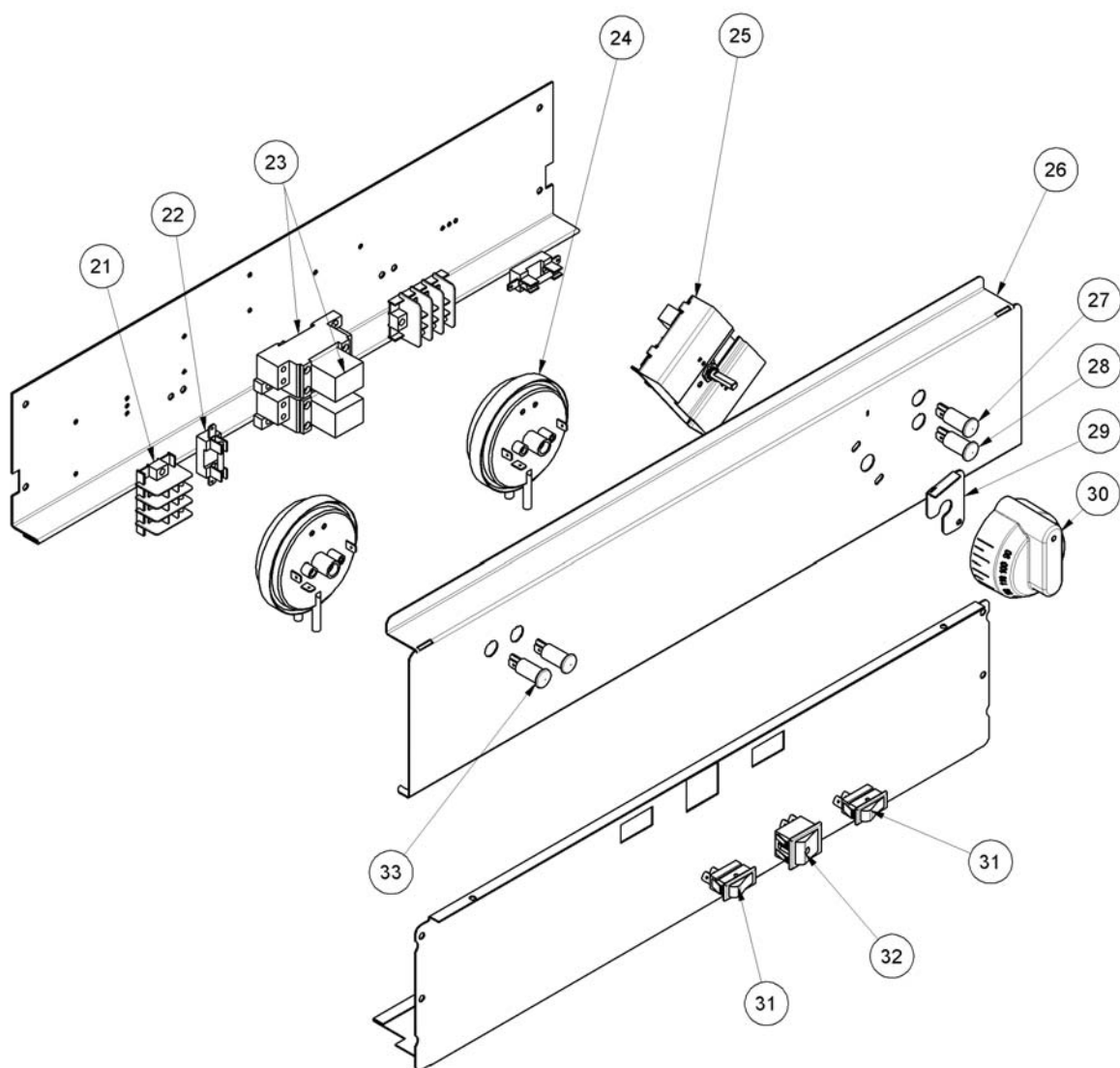
## 8.1.3 FN8130GHPO - Main Assembly



ITEM	PART NO	DESCRIPTION
13	018019	FRYER BASKET -STANDARD (143mm x 337mm)
	023220	FRYER BASKET - LARGE (220mm x 337mm)
14	228129	BASKET TRAY 600mm
15	228128	FISH PLATE GT60
16	227856	MAGNETIC CATCH 02-10-201-10
17	236795	DRAIN VALVE
18	227852	LEG PLATE
19	227850	LEG 150mm (FLUSH STUD)
20	229671	LEG RING PLATE THREADED

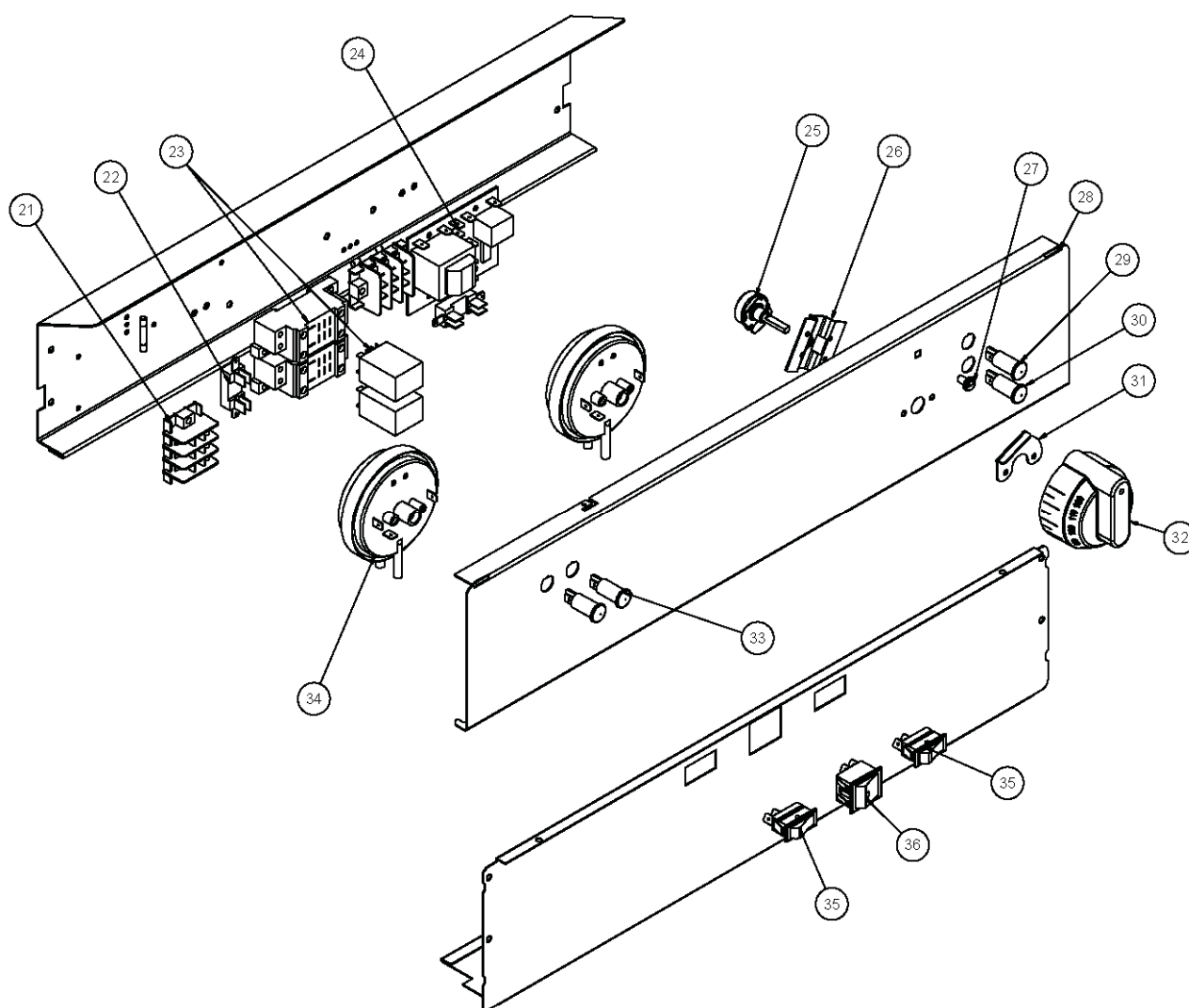
## 8 Exploded Parts Diagrams

### 8.1.4 FN8130GHPO - Electrical Assembly (Up to Lot # 1113999)



ITEM	PART NO	DESCRIPTION
21	013586	TERMINAL BLOCK PA32
22	229033	FUSEHOLDER 6.3 x 32mm
	020109	GLASS FUSE 2AMP 250V 1¼ x ¼
23	016674	RELAY OMRON LY2 240AC
	016673	BASE LY2
24	022596	DIFF.AIR PRESSURE SWITCH
25	023144	THERMOSTAT FAST G5
26	229241	CONTROL PANEL WA WLDF
27	227962	NEON-GREEN-412247030T
28	227963	NEON-ORANGE-4122000478
29	234082	KNOB STOP PLATE HPO WLDF (From Lot No. 1002000)
30	234146	KNOB WALDF 1/4" 195-90c
31	020258	RESET SWITCH
32	022449	POWER SWITCH
33	013528	NEON (UL APPROVED )

## 8.1.5 FN8130GHPO - Electrical Assembly (from Lot # 1114000)

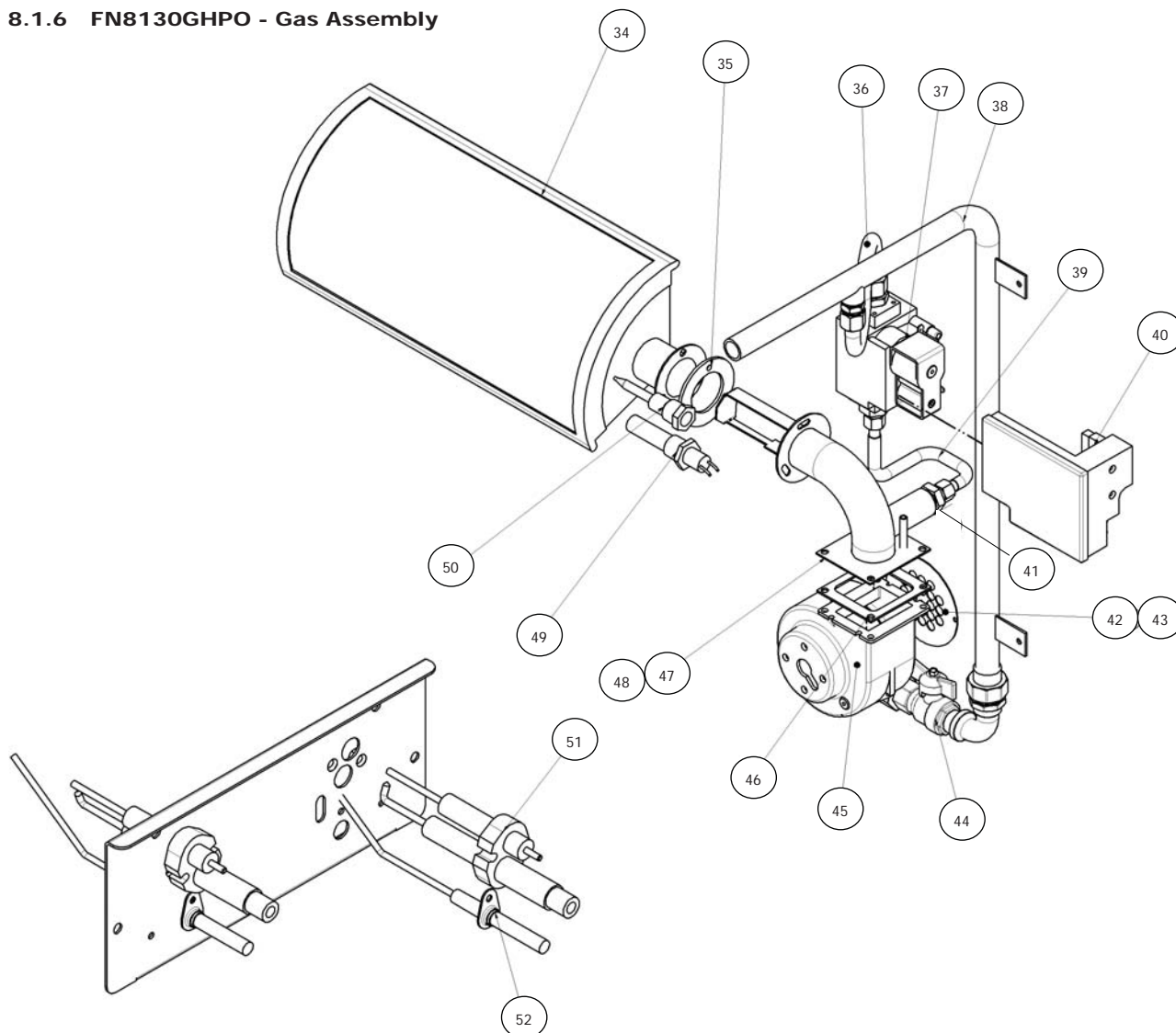


ITEM	PART NO	DESCRIPTION
21	013586	TERMINAL BLOCK PA32
22	229033	FUSEHOLDER 6.3 x 32mm
	020109	GLASS FUSE 2AMP 250V 1¼ x ¼
23	016674	RELAY OMRON LY2 240AC
	016673	BASE LY2
24	229685	CONTROL BOARD FAST
25	234151	POTENTIOMETER 6mm SHAFT,1Kohm
26	020976	POTENTIOMETER MOUNTING BRACKET
27	228571	INDEX MARK MOULDING
28	235360	CONTROL PANEL WA (STAINLESS)
	235956	CONTROL PANEL WA (BLACK)
	238949	CONTROL PANEL WA (BURGUNDY)
	238950	CONTROL PANEL WA (CHILLI RED)
29	228922	NEON - WHITE
30	227963	NEON - ORANGE-4122000478
31	235359	KNOB STOP PLATE
32	235356	KNOB Waldorf 6mm 100-195 °C
33	013528	NEON (UL APPROVED)
34	022596	DIFF. AIR PRESSURE SWITCH
35	020258	RESET SWITCH
36	022449	POWER SWITCH



## 8

### 8.1.6 FN8130GHPO - Gas Assembly



ITEM	PART NO	DESCRIPTION
34	023163K	BURNER KIT
35	022673	GASKET-BURNER FLANGE
36	022845	TUBE,FLEXIBLE,SS,1/2"O.D x 12"
	013837	CONNECTOR ASSY( MANIFOLD END)
	014408	CONNECTOR ASSY(VAIVE END )
37	022594	GAS CONTROL - SIT 840 Sigma
38	227134	MANIFOLD 600 FRYER
39	024156	FLEXTUBE DORMONT T6 x 12
40	234140	ELECTRONIC FLAME DEVICE
41	038430	INJECTOR 4.30mm <b>(NAT)</b>
	038240	INJECTOR 2.40mm <b>(LPG / PROPANE)</b>
42	025382	AERATION PLATE <b>(LPG / PROPANE)</b>
43	023153	AERATION PLATE <b>(NAT)</b>
	022689	CONNECTOR ASSY (VAIVE END)
44	023816	BALL VALVE 1/2" BSP M/F TEE
45	023160K	BLOWER KIT
46	022672	GASKET-BLOWER FLANGE
47	004988	MIXER TUBE RH WA
48	004987	MIXER TUBE LH WA
49	018022K	OVERTEMP CONTROL KIT
50	020117	TEMPERATURE PROBE ASSEMBLY
51	024792	SPARK ELECTRODE WORKED GT60HPO
52	025383	FLAME ELECTRODE WORKED