

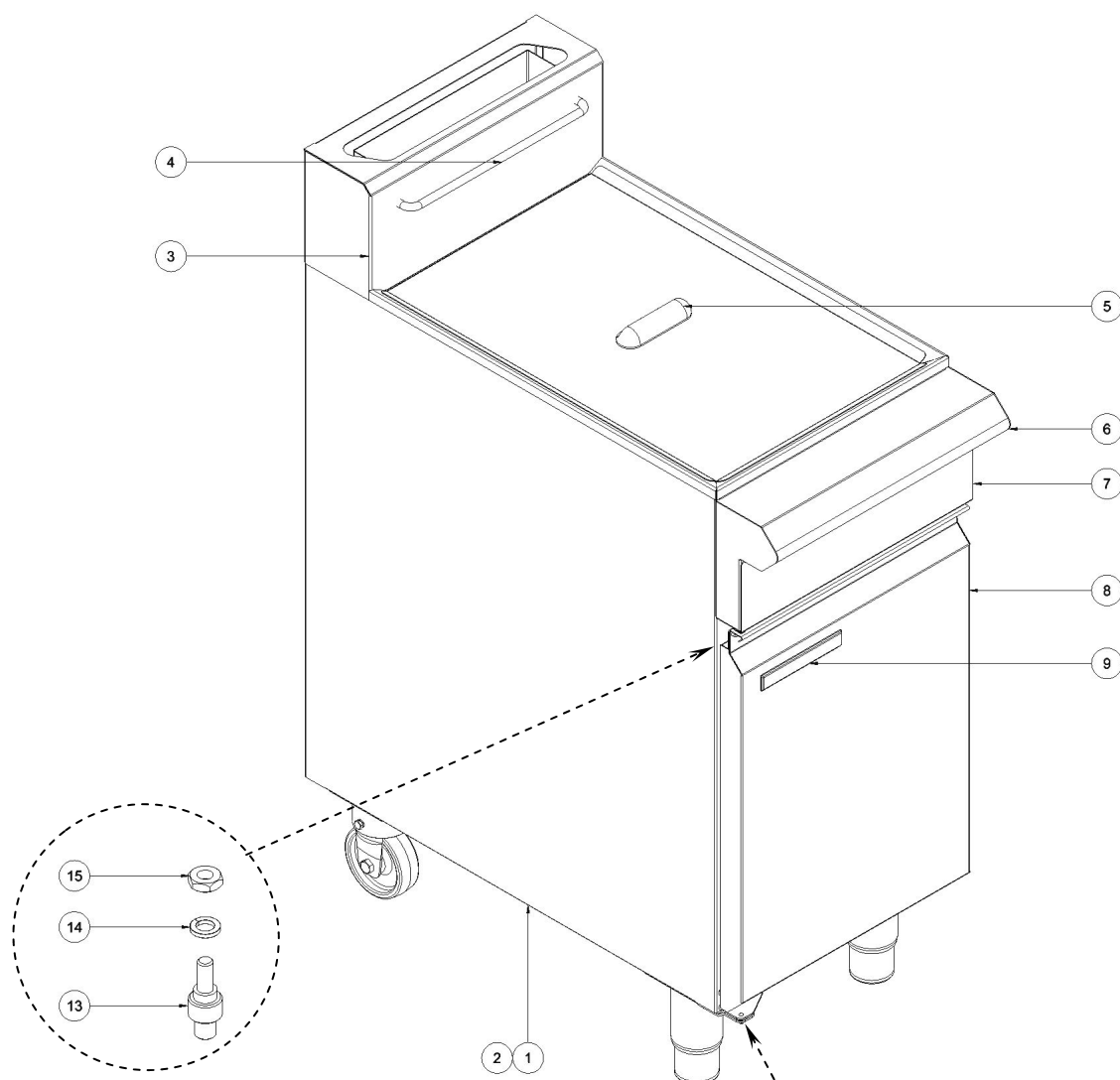
**Gas Conversion Kits**

<b>Kit Part No.</b>	<b>Gas Type to Convert to</b>	<b>Markets</b>
236934	Gas Conversion 400 Fryer - NAT GAS	<b>AU / NZ / XP</b>
236935	Gas Conversion 400 Fryer - LPG / PROPANE	<b>AU / XP</b>
236936	Gas Conversion 400 Fryer - LPG / BUTANE	<b>NZ / XP</b>
236937	Gas Conversion 400 Fryer - TOWNS	<b>AU / NZ / XP</b>
237021	Gas Conversion 400 Fryer - NAT (UK)	<b>UK</b>
237022	Gas Conversion 400 Fryer - PROPANE (UK)	<b>UK</b>

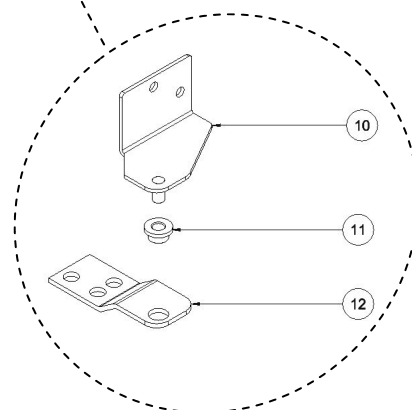
**NOTE:** A Gas Conversion Instruction Sheet is included with the Conversion Kit.

## 8 Exploded Parts Listings

### Blue Seal GT18 Fryer - Main Assembly

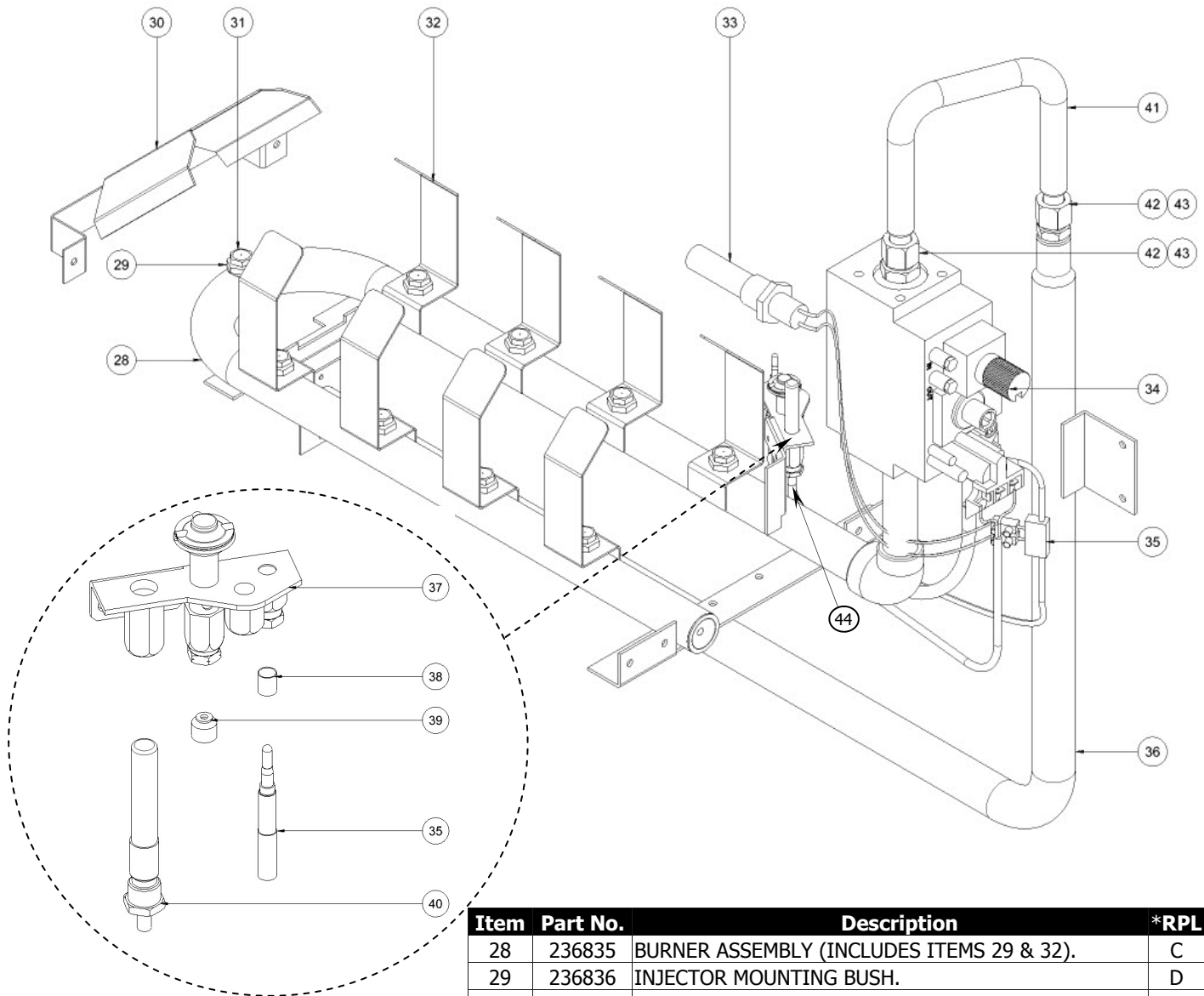


Item	Part No.	Description	*RPL
Not Shown	236698	FRYER TANK 400 1 PAN GAS	D
1	236722	FRYER SIDE PANEL LH	D
2	236720	FRYER SIDE PANEL RH	D
3	236877	SPLASHBACK GT18	D
4	227747	BASKET HANGER 305mm	D
5	236933	LID ASSY 400 FRYER	D
6	236871	HOB FRONT WA GT18	D
7	236951	CONTROL PANEL GT18	D
8	236975	DOOR ASSEMBLY GT18 (NO BADGE)	D
	236812	DOOR HANDLE GT18	D
	236809	DOOR OUTER GT18	D
	236810	DOOR INNER FN8118G/GT18	D
	227466	FRYER CATCH RECEIVER	D
	228132	TUBE CLIP	D
9	227960	BADGE BLUESEAL	D
10	228308	HINGE PIVOT WA	C
11	228300	HINGE PLATE	C
12	228301	HINGE BUSH	C
13	228414	HINGE PIVOT STUD	C
14	045411	WASHER M5 SPRING SS	D
15	044015	NUT 3/16" BSW HEX SS	D



* Recommended Parts Level	
RPL	Number of units in service
A	1-5
A+B	5-10
A+B+C	10-50
A+B+C+D	50+

Blue Seal GT18 Fryer - Burner Assembly

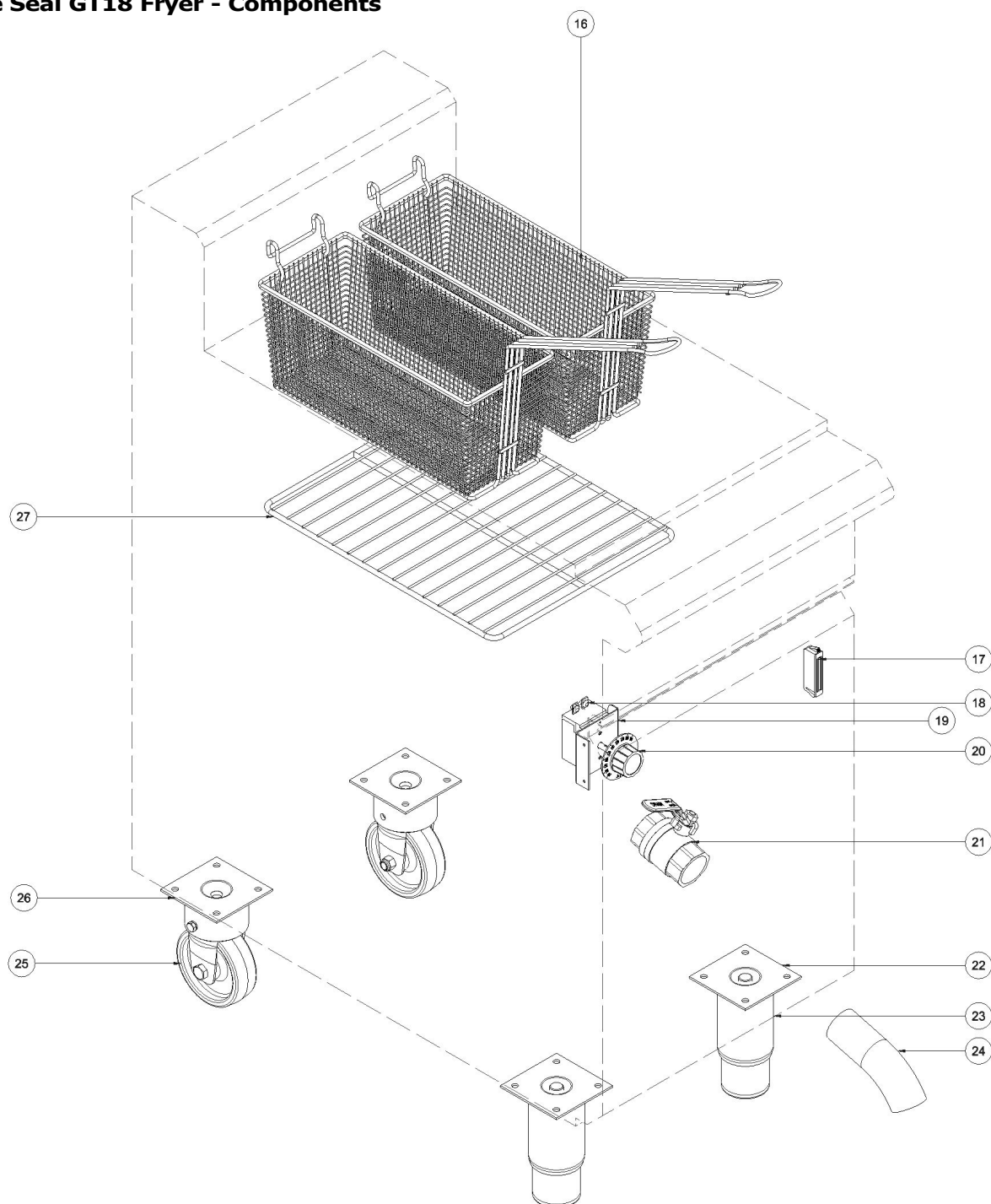


Item	Part No.	Description	*RPL
28	236835	BURNER ASSEMBLY (INCLUDES ITEMS 29 & 32).	C
29	236836	INJECTOR MOUNTING BUSH.	D
30	236712	BURNER REAR DEFLECTOR.	D
31	030155	INJECTOR 1.55mm - Nat Gas.	C
	030095	INJECTOR 0.95mm - LPG (Propane).	C
	030090	INJECTOR 0.90mm - LPG (NZ) / Butane.	C
	030260	INJECTOR 2.60mm - Town Gas.	C
32	236746	BURNER DEFLECTOR.	B
33	018022K	OVERTEMP CONTROL KIT.	A
34	018089K	GAS CONTROL SIT 820 MV KIT.	A
35	018094	THERMOSTAT INTERRUPTED.	A
36	236803	SUPPLY PIPE.	D
37	018090K	PILOT BURNER KIT.	A
38	018743	THERMOCOUPLE SPACER.	C
39	018091	PILOT INJECTOR - Nat Gas - 0.62mm (Non UK).	A
	018092	PILOT INJECTOR - LPG / Butane - 0.35mm (Non UK).	A
	018972	PILOT INJECTOR - Nat Gas (G20) - 0.45mm (UK Only).	A
	018971	PILOT INJECTOR - Propane (G31) - 0.30mm (UK Only).	A
	026393	PILOT INJECTOR - TOWNS - 0.75mm.	A
40	018093	THERMOPILE.	A
41	022845	TUBE FLEXIBLE SS ½" OD x 12".	D
42	233167	NUT (½" CC).	D
43	233168	OLIVE (½" CC).	D
44	237077	FLEXTUBE DORMONT T4 x 18".	D

* Recommended Parts Level	
RPL	Number of units in service
A	1-5
A+B	5-10
A+B+C	10-50
A+B+C+D	50+

## 8 Exploded Parts Listings

### Blue Seal GT18 Fryer - Components



Item	Part No.	Description	*RPL
16	018019	FRYER BASKET -STANDARD	C
17	227856	MAGNETIC CATCH 02-10-201-10	C
18	236801	THERMOSTAT MV FRYER 100-190C	A
19	236820	THERMOSTAT MOUNTING BRACKET	C
20	236848	KNOB 100-190C FRYER	B
21	236795	BALL VALVE 1 1/4" 30mm NB	B
22	227852	LEG PLATE	D
23	227850	LEG 150mm (FLUSH STUD)	D
24	018147	DRAIN EXTENSION	D
25	229674	REAR ROLLER ASSY	D
26	229671	LEG RING PLATE THREADED	D
27	236768	BASKET SUPPORT RACK	D

* Recommended Parts Level	
RPL	Number of units in service
A	1-5
A+B	5-10
A+B+C	10-50
A+B+C+D	50+