

GM

Series 7

UNDERCOUNTER GLASSWASHER



Parts Manual

Spare Parts

DESCRIPTION	PART NO
Cabinet & Door	
Door Assembly	214 10015
Door Latch	205 20046
Front Panel	214 20016
Rear Safety Panel	214 20020
Controls & Indicators	
Cord Set 15A	600 30452
Digital Temperature Sensor 500mm	600 30429
Digital Temperature Sensor 1000mm	600 30430
Door Reed Switch	600 30183
Electronic Controller Replacement Kit	KIT0440055
LCD Board Kit with Spacers	KIT0440048
Loom LCD Interface 2.5m	600 30426
WI200 Keypad Membrane	400 70160
Heating Components	
Over Temperature Thermostat	600 30088
Rinse Element 3 KW	600 30249
Rinse Tank Assembly	205 10205
Wash Element 2.5KW	600 30160
Hoses & Fittings	
Hose Clamp 6 mm	ASS 6
Hose Clamp 16 mm	ASS 16
Hose Drain Pump 2.5m	600 60105
Pressure Switch Hose (130mm)	3067
Rinse Hose (specify length)	600 60073
Wash Pump Inlet Hose (80mm)	6196
Wash Pump Outlet Hose (x 0.5)	400 90012

Spare Parts

DESCRIPTION

PART NO

Pumps & Solenoids

Detergent Pump	600 30094
Detergent Pump Squeeze Tube	600 30134
Drain Pump	600 60102
Flow Restrictor 10L.min	600 30328
Rinse Aid Pump Adjustable	600 30480
Solenoid Valve	3342
Wash Pump	600 30327

Wash Tank Components

Cap Screw	C261004
Filter Assembly	400 10038
Pressure Bell	400 90135
Pressure Bell O Ring	ARP 205
Rinse Arm Lower Assembly	400 10112
Rinse Spindle Lower	400 30073
Wash Arm Lower Assembly	301 10030
Wash/Rinse Arm Upper Assembly	214 10137
Wash Spindle Lower	400 30072
Wash Spindle Nut	400 30074
Wash/Rinse Spindle Upper	400 30007
Wash Tank Upstand	279 10018

Note:

For more parts look in the section “Assembly Diagrams”.

Assembly Diagrams

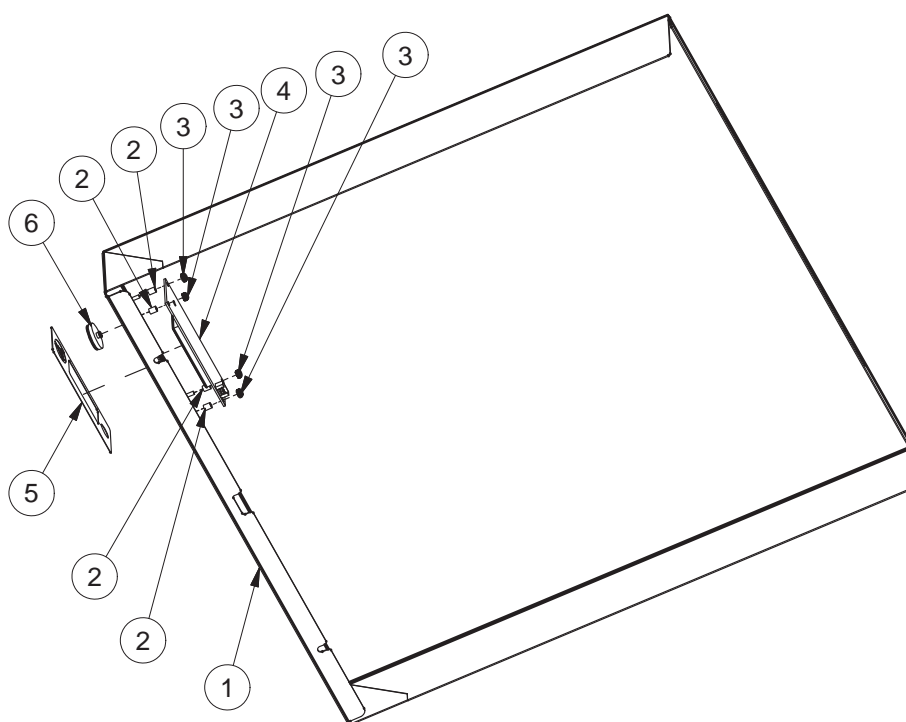
GM7 CONTROL PANEL ASSEMBLY

214 10043 31/07/2013 REV 1-A

FRONT VIEW



EXPLODED VIEW

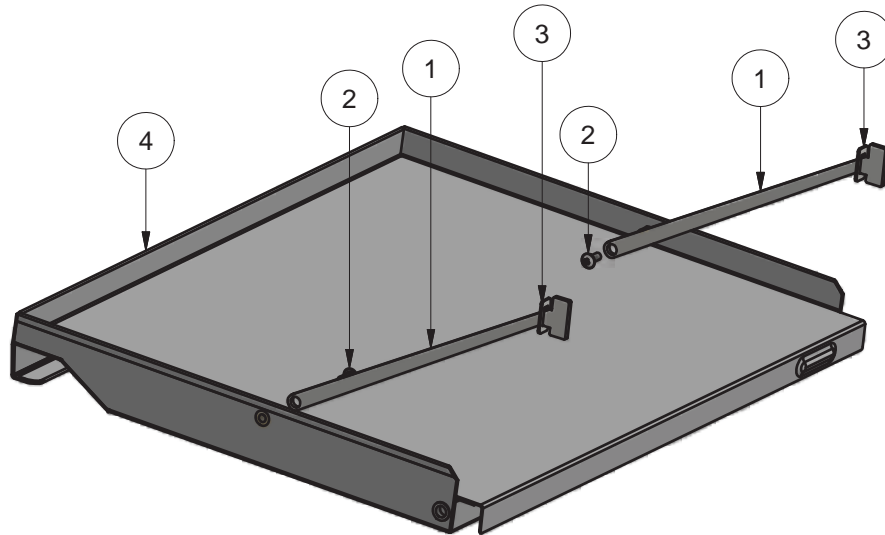


Parts List			
ITEM	PART NUMBER	DESCRIPTION	QTY
1	214 10018	GM7 CONTROL PANEL SUB-ASSEMBLY	1
2	600 30450	SPACER RETAINING M3 x 6.35MM	4
3	600 80122	M3 SS HEX NYLON NUT T304	4
4	600 30420	WI200 LCD INTERFACE PCBA	1
5	400 70160	WASHTECH WI200 KEYPAD MEMBRANE v2	1
6	600 30421	LED DIFFUSER BUTTON	1

GM7 DOOR & STAYS ASSEMBLY

214 10020 25/09/2013 REV 1-A

EXPLODED VIEW



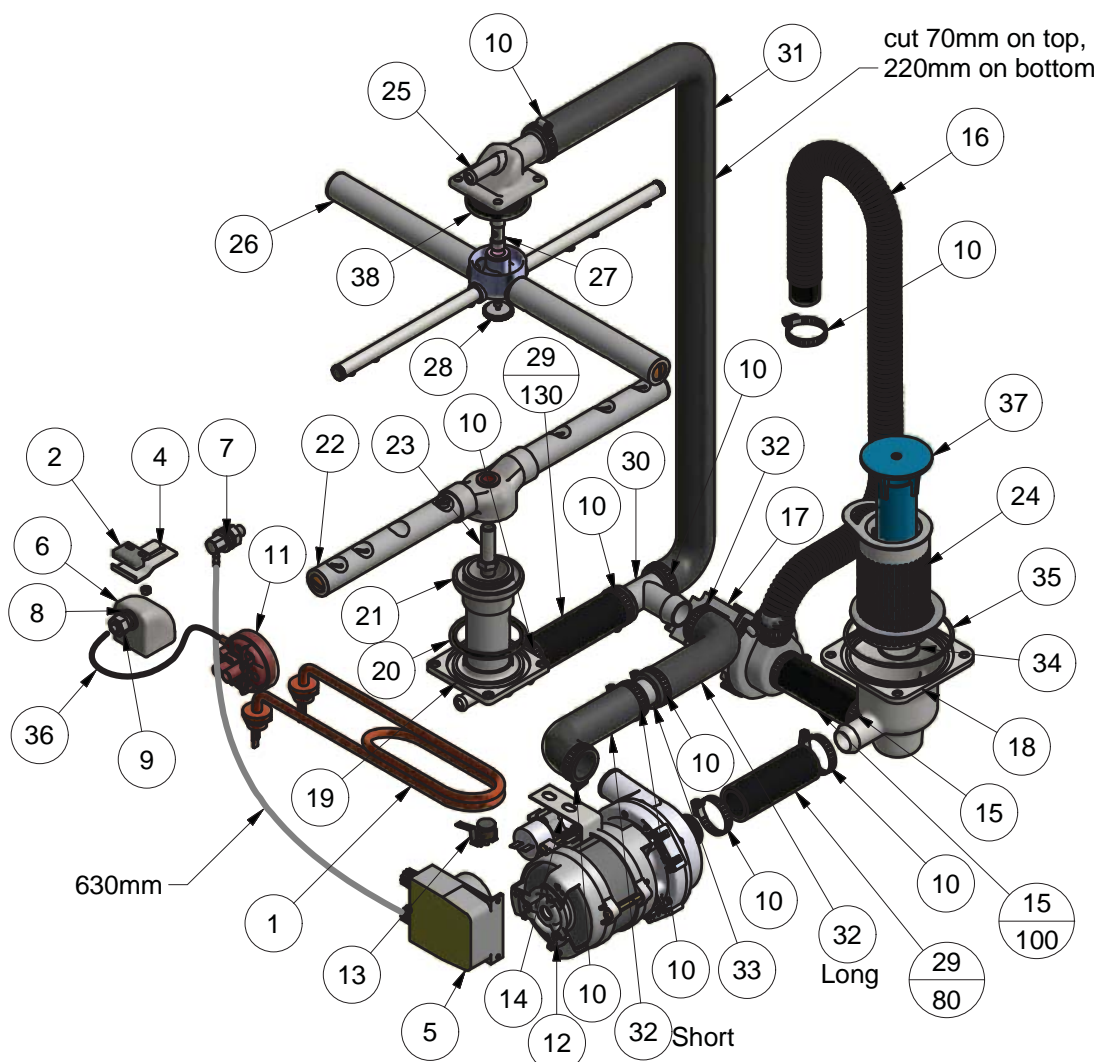
Parts List			
ITEM	PART NUMBER	DESCRIPTION	QTY
1	207 20054	XU DOOR STAY	2
2	600 80017	M5 x 12 SS TRUSS HEAD SCREW	2
3	278 20066	GLV5\UD5\GL5 DOOR STOP BRKT	2
4	214 10015	GM7 DOOR ASSEMBLY	1

GM7 0006 23/07/2014 REV 1-A

Revision 1D

GM7 WASH SYSTEM

GM7 0002 27/09/2013 REV 3-A



Parts List				Parts List			
ITEM	PART NUMBER	DESCRIPTION	QTY	ITEM	PART NUMBER	DESCRIPTION	QTY
1	600 30160	ELEMENT 2500W BENT ELEMENT	1	20	ARP333	O-RING ARP333	1
2	600 30183	REED SWITCH STEM	1	21	301 10139	M1(3) LOWER WASH COLLAR ASSY	1
3	8112	SS HEX NUT M4	1	22	301 10030	ASSY M1/GLV6 ALL SS WASH ARM ASSY	1
4	400 20115	DOOR SWITCH MAGNET CLAMP	1	23	400 30072	M2 WASH SPINDLE	1
5	600 30094	PERI PUMP 1.5L/H SEKO-KIT	1	24	400 10038	XG/GM Filter Assy	1
6	400 90135	SQUARE PRESSURE BELL CASTING	1	25	400 90078	GM/GL WASH TEE	1
7	INJECTOR	DETRGENT INJECTOR @600 30094	1	26	214 10137	GM7 UPPER WASH RINSE ARM ASSY	1
8	ARP205	O-RING 11IDx18OD	1	27	400 30007	SPINDLE G TYPE AL RINSE	1
9	600 80009	M10 SS HX NUT	1	28	261004	CAPSCREW M2/AL/GA	1
10	ASS16	HOSE CLAMP	14	29	6196	HOSE 25MM 2 PLY RADIATOR	2
11	600 30266	PRESSURE SWITCH 50/25MM	1	30	600 60229	25 x 25 x 25 MM SS HOSE TEE	1
12	600 30327	WASH PUMP 0.24kW	1	31	400 90012	HOSE GLV & UD UPPER WASH	1
13	600 30088	THERMOSTAT TY60/R-110C [With E Bkt]	1	32	400 90012 x 0.5	HOSE GLV & UD UPPER WASH	2
14	214 20005	WASH PUMP BRACKET	1	33	300 20002	TUBE JOINER SS	1
15	6197	HOSE 22mm x 100mm	1	34	ARP38x2	O-RING ARP38x2 N70	1
16	600 60105-eG	HOSE DRAIN PUMP 2.5M	1	35	ARP89x4	89 x 4 N70 O Ring	1
17	600 60102	DRAIN PUMP B20-6 220-240V 50Hz	1	36	3067	HOSE PRESSURE SWITCH x 130mm	1
18	400 30231	CASTING WASH & DRAIN MACHINED	1	37	279 10018	UPSTAND UD6 DRAIN	1
19	269 10050	LOWER WASH TEE SUB ASSY	1	38	ARP328	O-RING 47.35IDx54OD	1

Wash Pump

Part Number

600 30327

Function

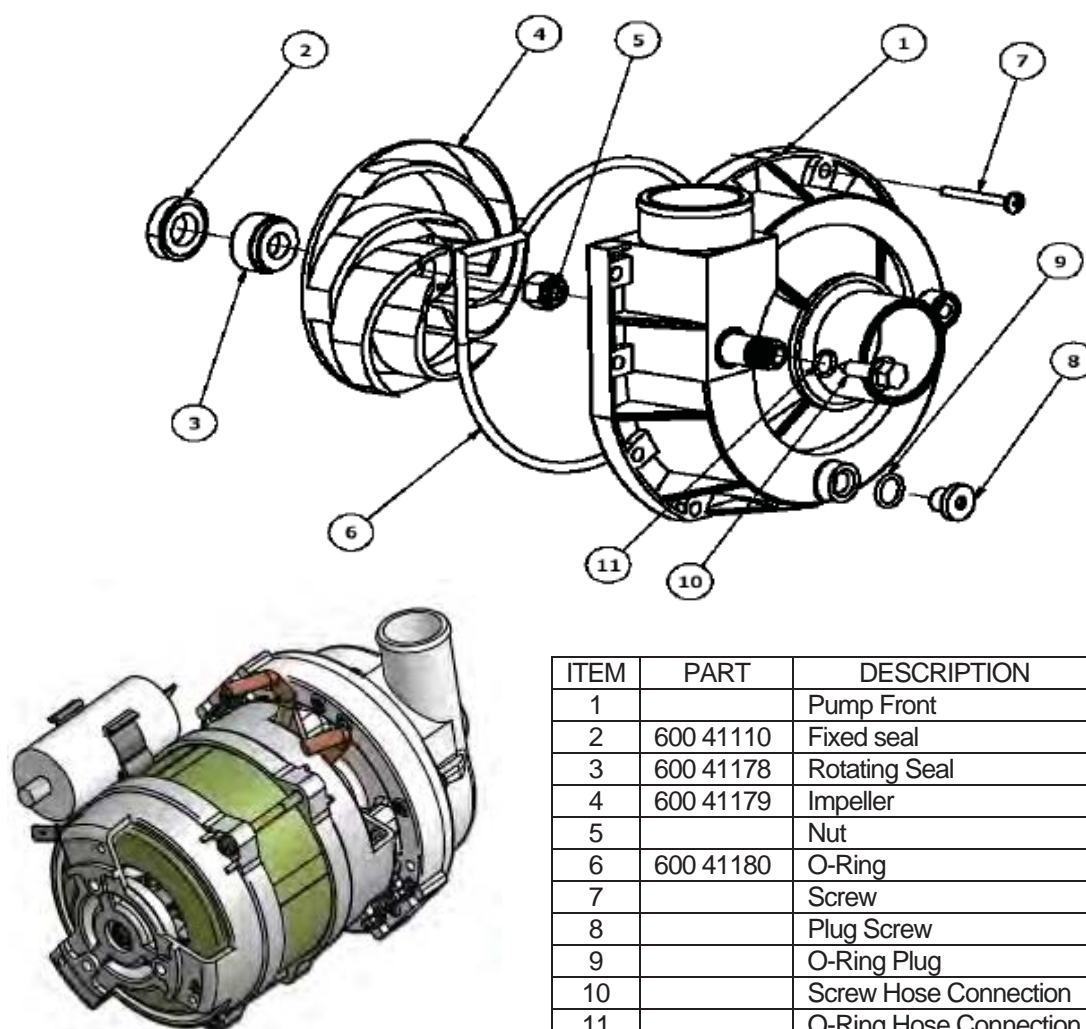
Pumps water from the wash tank to the wash arms providing a recirculating wash cycle.

Description

Electric Pump CRC-L/SX

Power:	0.24 kW	Speed:	2800 rpm
Voltage:	230 V	Amperes:	1.1 A
Frequency:	50 Hz	Capacitor:	5 uF

Diagram

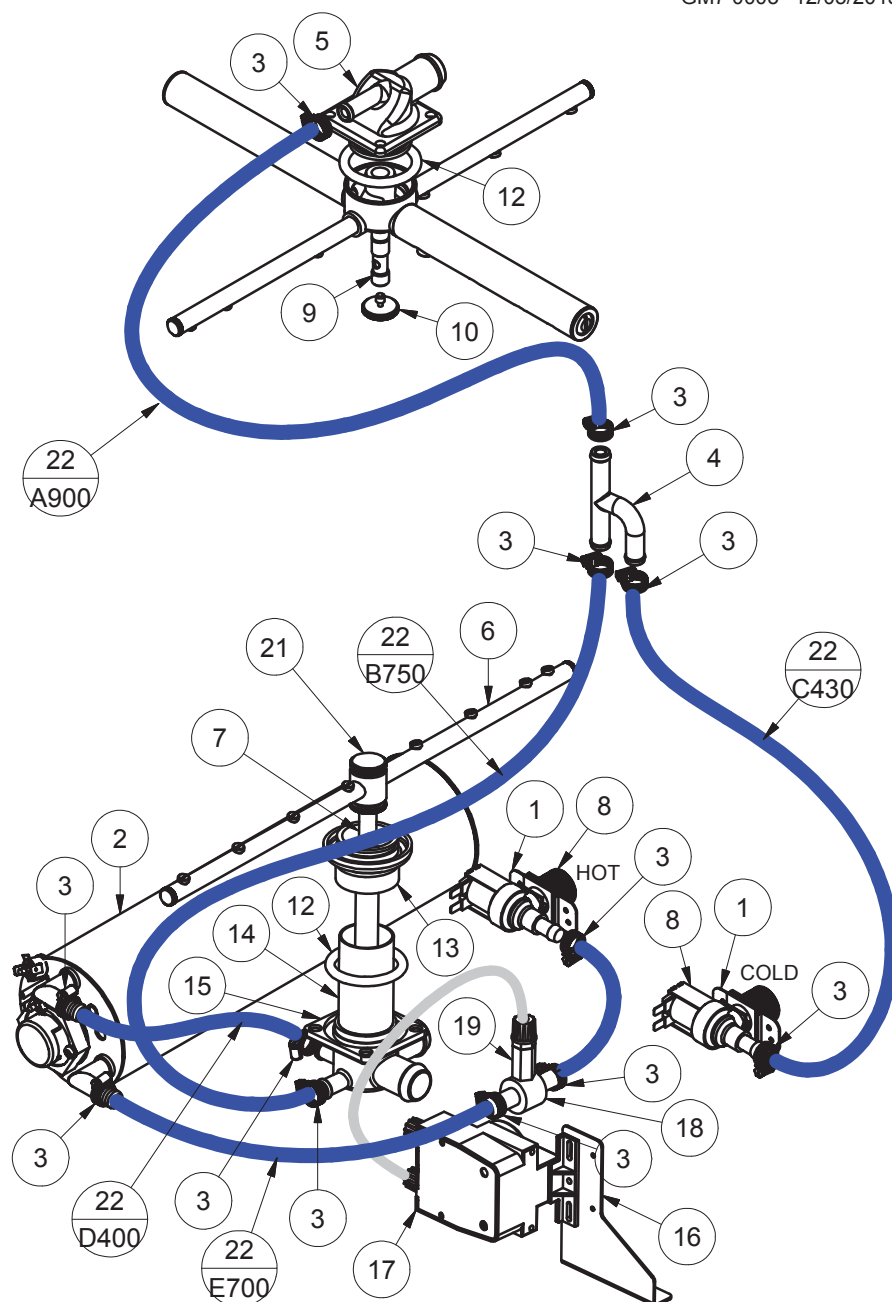


Replacement

Drain the wash tank and switch off the power.
Disconnect the wires from the wash pump connectors.
Release the hose clamps on the inlet and outlet pump hoses and remove the pump.
Replace in reverse order.

GM7(W) RINSE SYSTEM

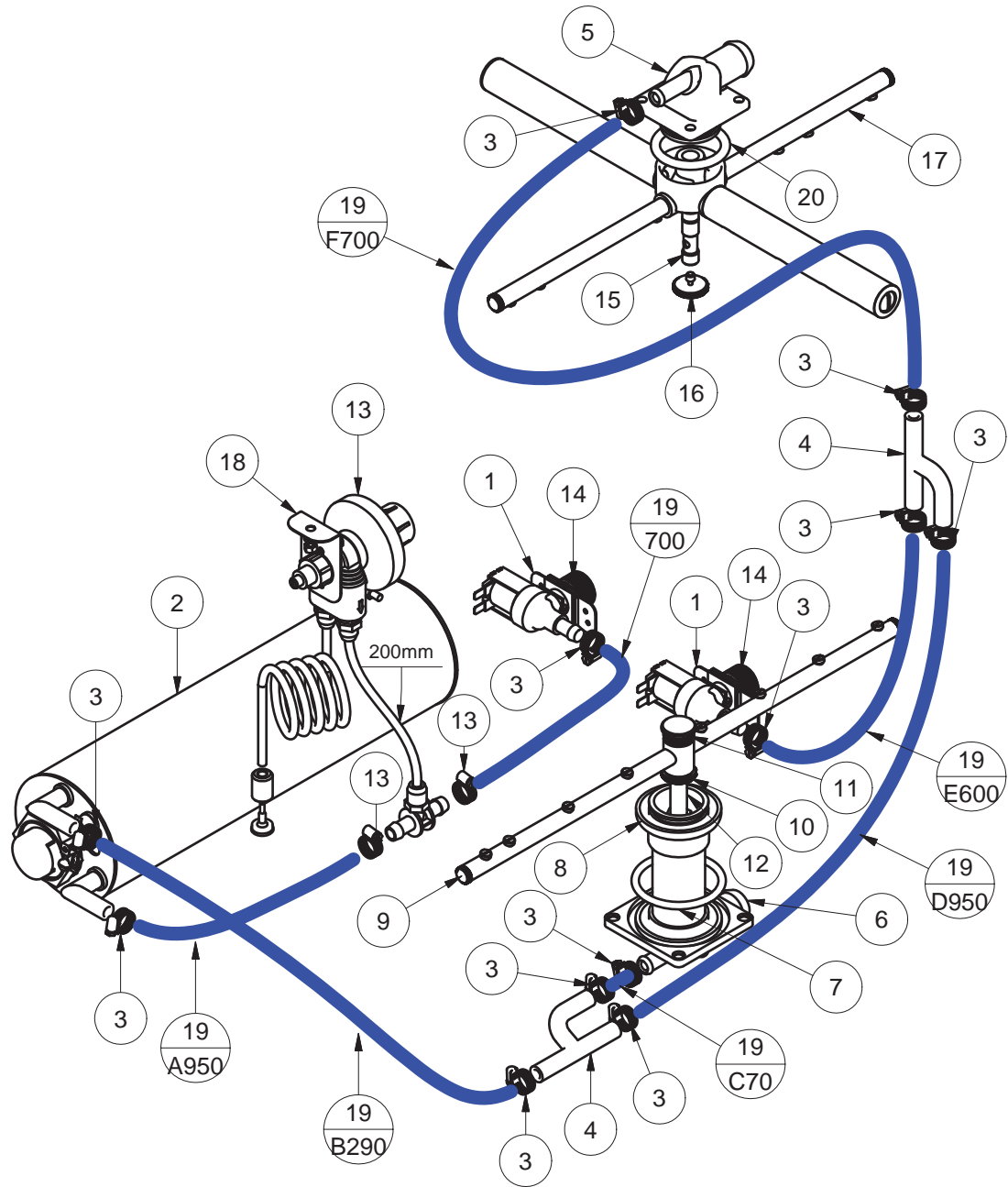
GM7 0003 12/05/2015 REV 3-D



Parts List				Parts List			
ITEM	PART NUMBER	DESCRIPTION	QTY	ITEM	PART NUMBER	DESCRIPTION	QTY
1	1247	INLET SOLENOID SUPPORT	2	12	ARP328	O-RING 47.35IDx54OD	2
2	205 10205	XG/GM7 RINSE TANK ASSEMBLY	1	13	214 10049	GM7 WASH COLLAR ASSY	1
3	ASS05	HOSE CLAMP	12	14	400 30195	LOWER WASH COLUMN TUBE	1
4	600 60230	SS RINSE TEE	1	15	400 90163	GM7 WASH TEE	1
5	400 90078	GM/GL WASH TEE	1	16	214 20062	GM7(W) CHEMICAL PUMPS BRACKET	1
6	400 10228	ASSY GM4/GL5/GLV5 RINSE ARM	1	17	600 30480	RINSE AID PUMP ADJUSTABLE	1
7	400 30072	M2 WASH SPINDLE	1	18	280 30003	TEE BRACKTON RINSE AID	1
8	3342	SOLENOID VALVE 1 WAY	2	19	@600 30480	NON RETURN VALVE	1
9	400 30007	SPINDLE G TYPE AL RINSE	1	20	400 30074	NUT M2 WASH SPINDLE	1
10	261004	CAPSCREW M2/AL/GA	1	21	400 30339	RINSE SPINDLE SHORT	1
11	214 10137	GM7 UPPER WASH RINSE ARM ASSY	1	22	600 60073	HOSE HOTOTAL 11X19MM	3

GM7 RINSE SYSTEM

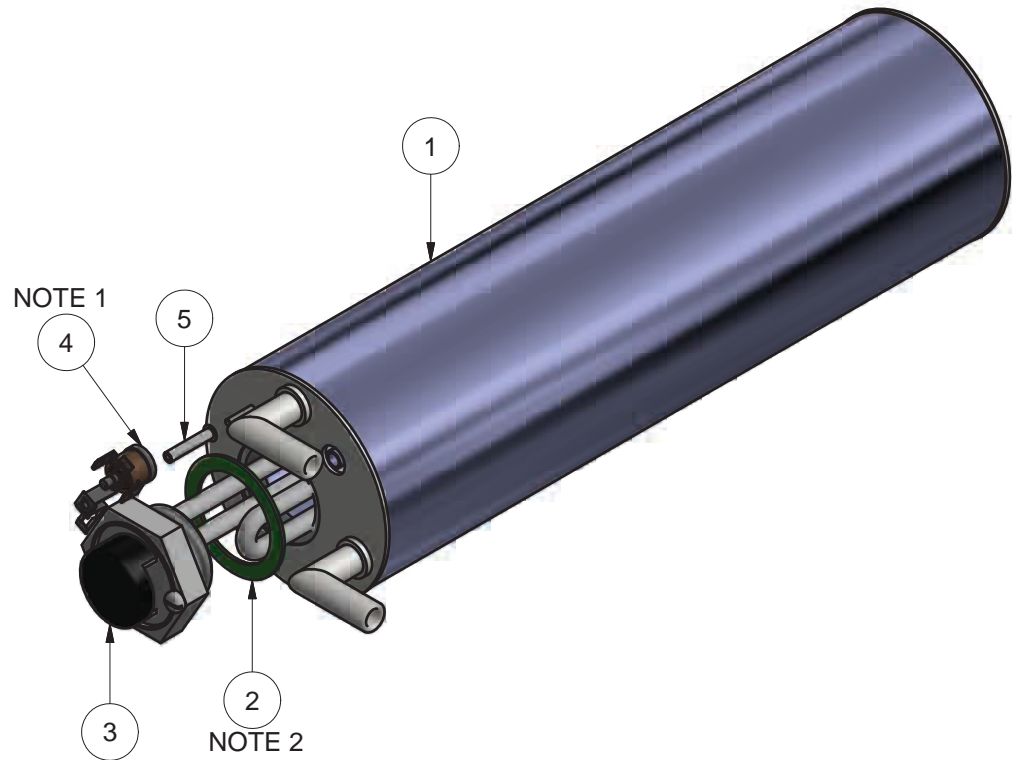
GM7 0003 2/08/2013 REV 1-A



Parts List				Parts List			
ITEM	PART NUMBER	DESCRIPTION	QTY	ITEM	PART NUMBER	DESCRIPTION	QTY
1	1247	INLET SOLENOID SUPPORT	2	11	400 30073	M2 RINSE SPINDLE	1
2	205 10205	XG RINSE TANK ASSEMBLY	1	12	400 30072	M2 WASH SPINDLE	1
3	ASS06	HOSE CLAMP	12	13	400 90157	R/AID INJECTOR KIT TYPE G	1
4	600 60230	12x12x12 SS HOSE TEE	2	14	3342	SOLENOID VALVE 1 WAY	2
5	400 90078	GM/GL WASH TEE	1	15	400 30007	SPINDLE G TYPE AL RINSE	1
6	269 10050	LOWER WASH TEE SUB-ASSY	1	16	261004	CAPSCREW M2/AL/GA	1
7	ARP333	O-RING ARP333	1	17	214 10137	GM7 UPPER WASH RINSE ARM ASSY	1
8	269 10139	UE(5) LOWER WASH COLLAR ASSY	1	18	400 20123	BRACKET RINSE AID MOUNTING	1
9	400 10112	ASSY GM4/GL5/GLV5 RINSE ARM	1	19	600 60073	HOSE HOTOTAL 11X19MM	3
10	400 30074	NUT M2 WASH SPINDLE	1	20	ARP328	O-RING 47.35IDx54OD	1

XG/GM7 RINSE TANK ASSEMBLY

205 10205 19/09/2013 REV 3-D



NOTE 1: USE GRAPHITE JOINING COMPOUND ON BOTH SIDES OF GASKET BEFORE INSERTING ONTO ELEMENT

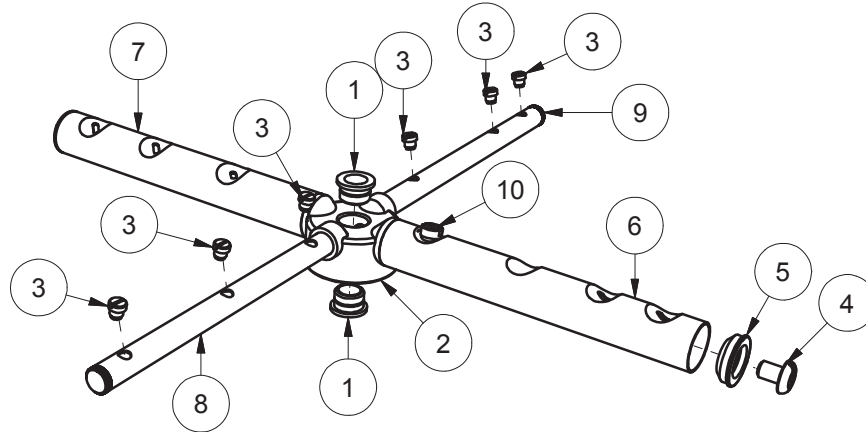
NOTE 2: USE HEAT TRANSFER COMPOUND UNDER THERMOSTAT HEAD

Parts List			
ITEM	PART NUMBER	DESCRIPTION	QTY
1	205 10200	XG RINSE TANK SUB ASSEMBLY	1
2	3006	ELEMENT GASKET	1
3	600 30249	3KW ELEMENT	1
4	600 30088	THERMOSTAT TY60/R-110C [With E Bkt]	1
5	600 80064	STANDOFF M3 x 12	1

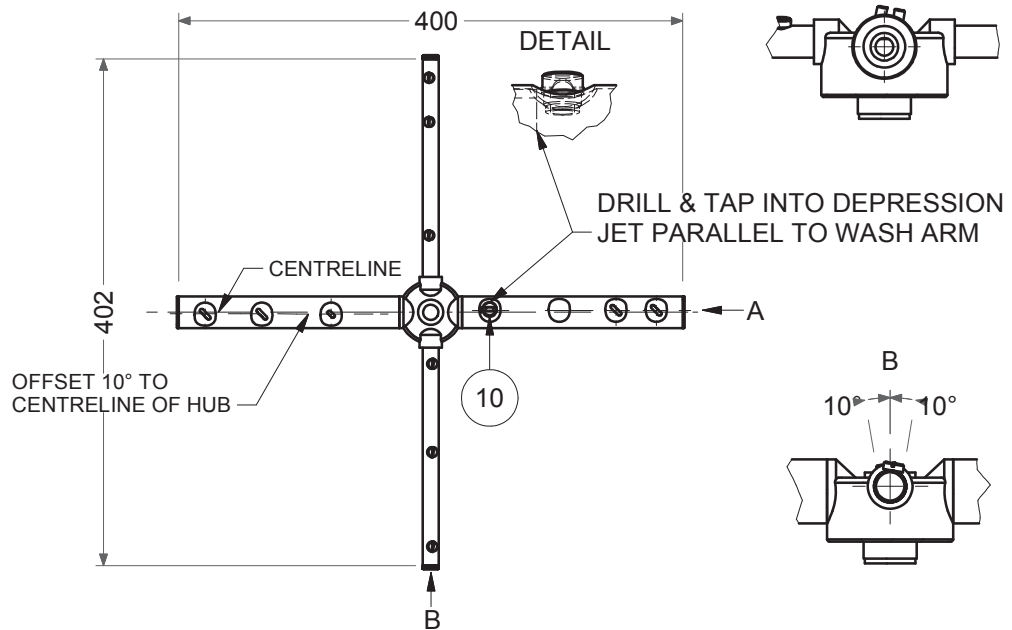
GM7 UPPER WASH RINSE ARM ASSEMBLY

214 10137 16/09/2014 REV 3-C

EXPLODED PERSPECTIVE VIEW



MAIN ELEVATION

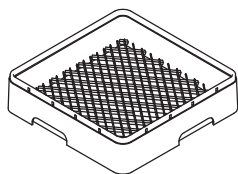


Parts List			
ITEM	PART NUMBER	DESCRIPTION	QTY
1	C190624	WASH/RINSE ARM BUSH	2
2	269 90009	WASH RINSE HUB UE	1
3	400 30087	G4 MACHINED RINSE JET	6
4	600 80072	M8 x 12 PAN SLOT SS MACHINE SCREW	2
5	400 30101	1" WASH ARM END PLUG	2
6	400 30012	WASH ARM TUBE UBA	1
7	400 30013	WASH ARM TUBE UBB	1
8	360 30016	RINSE ARM TYPE A ASSEMBLY	1
9	360 30017	RINSE ARM TYPE B ASSEMBLY	1
10	400 30088	MACHINED WASH JET	1

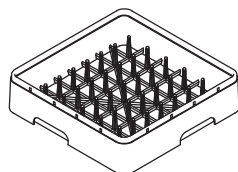
Accessories

WASHTECH GM7 ACCESSORIES

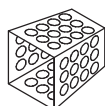
GM7 ACW 9/07/15 1C



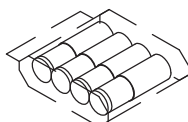
600 70080
450 mm PLASTIC CUPRACK



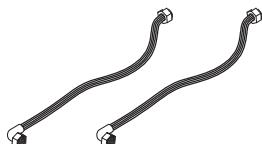
600 70081
450mm PLASTIC DISHRACK



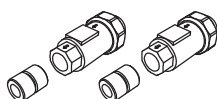
C660503
CUTLERY CONTAINER G



600 90021
ASSY GA/GM LEG (INOX 32x180xM10)



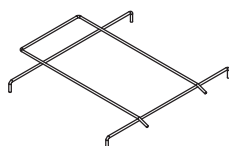
600 60080
2m HOSE ANGLE END



400 10118
DUAL CHECK VALVE ASSY



400 10038
GM / XG FILTER ASSEMBLY

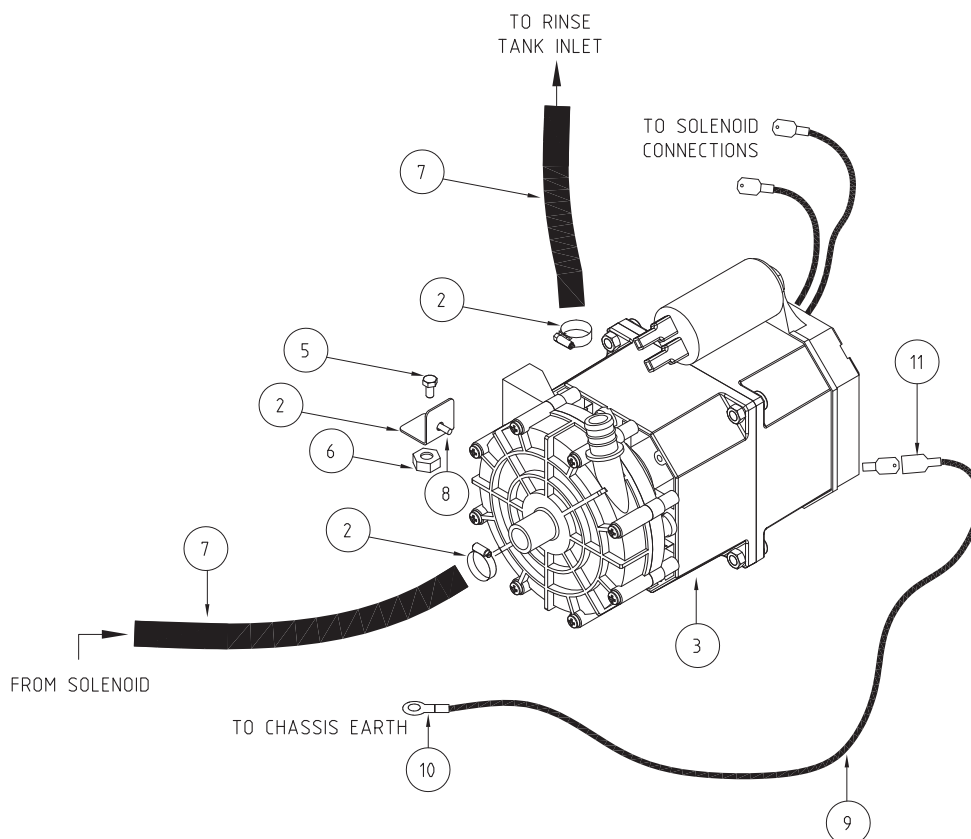


213 30001
RACK ADAPTOR

Appendices

RINSE PUMP KIT TYPE L - P/N 0440021

400 90142-1 31-05-10 1H



PARTS LIST - LGB RINSE PUMP KIT 0440021			
ITEM	CODE	DESCRIPTION	QTY
1	273 20013	BRACKET -RINSE PUMP	2
2	ASS06	HOSE CLIP ASS6	2
3	600 30400	0.25 kW RINSE PUMP WITH CAPACITOR 5uf	1
4	H1909B	DOUBLE ADAPTOR	2
5	88461	BOLT M6 x 12 S/S HEX	1
6	8106	NUT M6 HEX SS	1
7	600 60073	HOSE HOTAL 11mm x 19mm	0.7M
8	8801	MS PAN POZI ZP M4x12	1
9	600 30014	WIRE 0.75mm GREEN/YELLOW	0.5M
10	H4115	RING TERMINAL RED	1
11	H3560	TERMINAL SPADE RED	1
12	400 90142	RINSE PUMP KIT RETROFIT DIAGRAM	1

1. Install rinse pump using the bracket and bolts provided
2. Remove hose from solenoid and reconnect it to rinse pump outlet using hose clamp provided
3. Connect hose #7 supplied in kit from pump inlet to solenoid using hose clamp provided
4. Earth pump on chasis earth stud with green\yellow wire provided in wiring loom.
5. Connect pump wiring according to electrical diagrams provided in service manual or schematic diagram, supplied with the machine.

Information supplied in this manual is copyright. No part of this work may be reproduced or copied in any form or by any means, electronic or mechanical without the express permission of the author / publisher.



Distributed In
Australia by

MOFFAT®

740 Springvale Road, Mulgrave 3170, Victoria, Tel 03 9518 3888 Fax 03 9518 3818

Service 1 800 622 216
Parts 1 800 337 963

