

M2

Series 4

Parts Manual



WASHTECH®
PROFESSIONAL WASH SYSTEMS

Spare Parts M2-4(W)

DESCRIPTION	PART NO	REC. STOCK
Controls & Indicators		
Digital Temperature Sensor 500mm	600 30429	1
Digital Temperature Sensor 1000mm	600 30430	1
Door Switch	600 30183	1
Electronic Controller Kit	KIT0440067	1
LCD Board with Spacers Kit	KIT0440069	1
Pressure Switch Break Tank	400 10214	1
Pressure Switch Wash Tank	600 30479	1
Keypad Membrane	KIT0440047	1
Heating Components		
Over Temperature Thermostat	600 30088	
Rinse Element 2 x 3 kW (Prior to s/n144691)	3007	1
Rinse Element 2 x 3kW (from s/n 144691)	600 30496	1
Wash Element 2.5 kW	600 30159	1
Hoses		
Hose Drain Pump 2.5m	600 60105	1
Hose Drain Pump Inlet	600 90074	1
Pressure Switch Hose	3067	400mm
Rinse Hose	600 60073	2000mm
Wash Pump Inlet Hose	1262	1
Wash Pump Outlet Hose	6195	350mm
Lower Wash Connection Hose	6196	100mm
Pumps & Solenoids		
Detergent Pump	600 30094	1
Detergent Squeeze Tube	600 30134	1
Drain Pump	600 60102	1
Rinse Aid Pump	600 30480	
Rinse Aid Squeeze Tube	600 30119	1
Rinse Pump	600 30508	1
Solenoid Valve	3342	1
Wash Pump	600 30299	1
Wash Tank Components		
Drain Filter	328 10032	1
Drain Upstand	400 10145	1
Rinse Arm End Plug	400 30200	2
Rinse Jet Machined	400 30087	2
Scrap Tray	328 10003	
Wash Arm End Screw	600 80072	2
Wash Jet Machined	400 30088	
Wash/Rinse Arm Bush	C190624	4
Wash Inlet Filter	328 12018	1
Wash Spindle Nut	400 30074	1

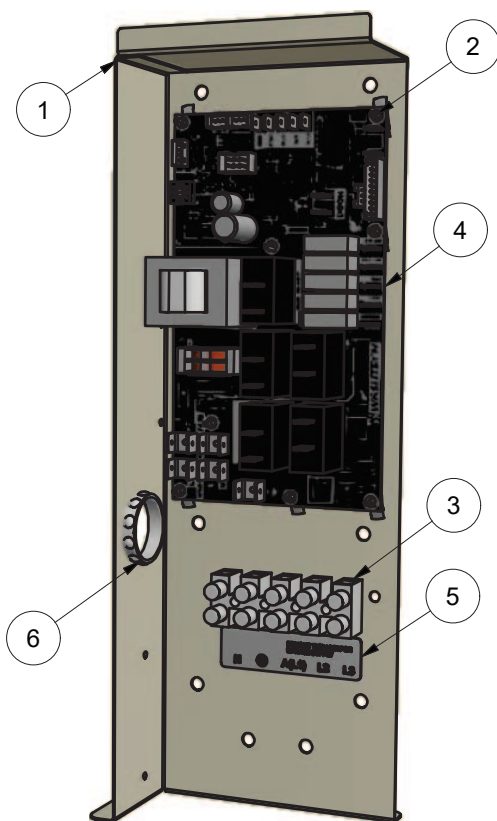
Note: For more parts look in the section "Assembly Diagrams"

Assembly Diagrams

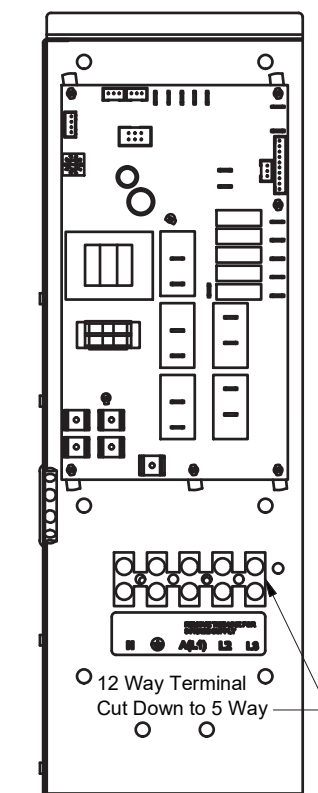
M2(4) WIRING TRAY ASSY

328 11017 23/08/2018 REV 3-C

PERSPECTIVE VIEW



FRONT VIEW

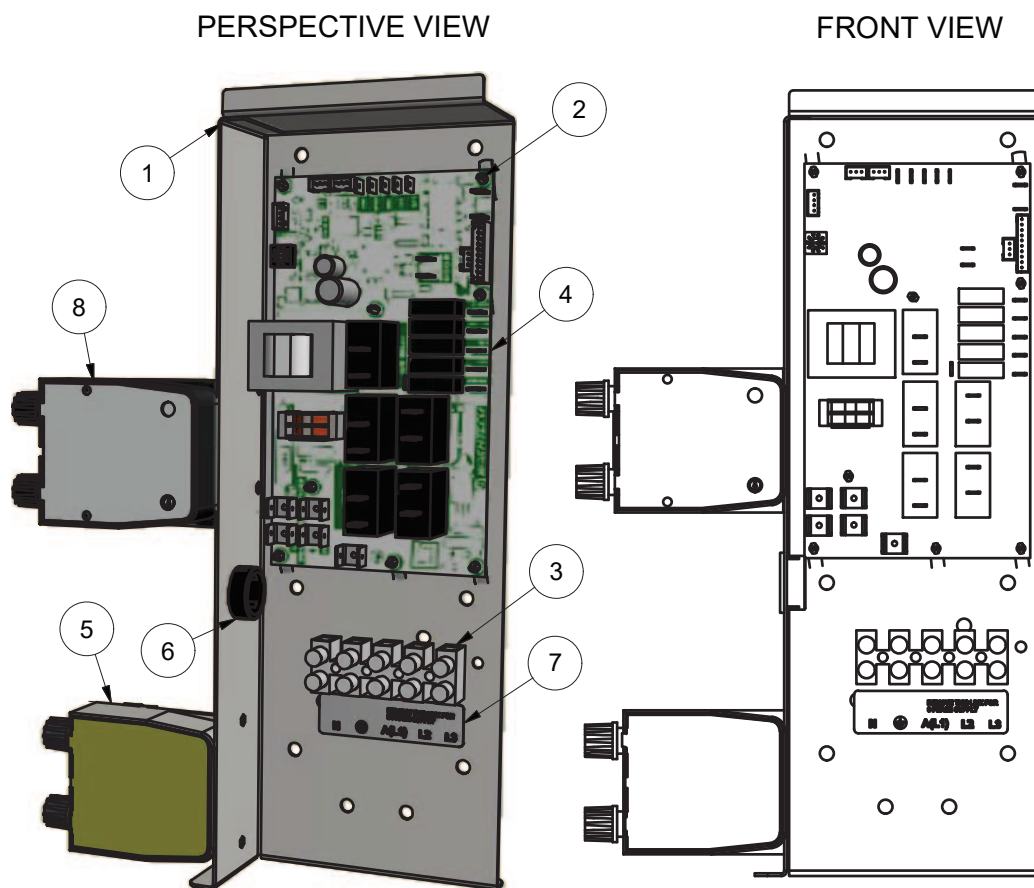


Parts List			
ITEM	PART NUMBER	DESCRIPTION	QTY
1	352 20008	M2(4) WIRING TRAY	1
2	600 30449	PCB SUPPORT NYLON 6.3MM	8
3	3229	TERMINAL STRIP 12 WAY x 0.5	0.5
4	600 30549	WI200 CONTROLLER PCBA	1
5	LABEL	POWER SUPPLY TERMINAL	1
6	600 30331	GROMMET 31.8 MM	1

Assembly Diagrams

M2(4) WIRING TRAY ASSY

328 11017 29/06/2017 REV 3-B

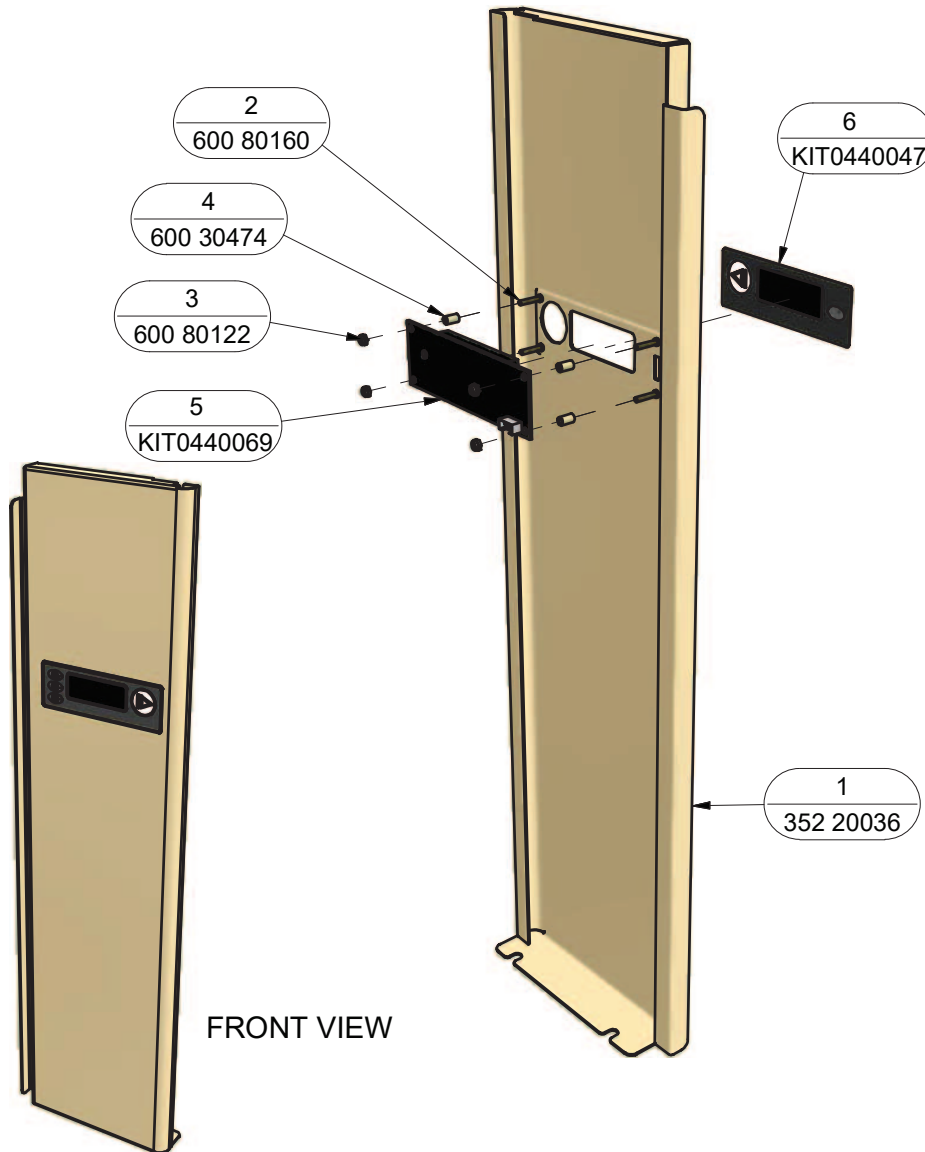


Parts List			
ITEM	PART NUMBER	DESCRIPTION	QTY
1	352 20008	M2(4) WIRING TRAY	1
2	600 30449	PCB SUPPORT NYLON 6.3MM	8
3	3229	TERMINAL STRIP 12 WAY x 0.5	0.5
4	KIT0440067	ELECTRONICS CONTROLLER KIT V2	1
5	600 30094	DETERGENT PUMP KIT	1
6	600 30089	BUSH SNAP - IN 25mm	1
7		POWER SUPPLY TERMINAL	1
8	600 30480	RINSE AID PUMP ADJUSTABLE	1

AL\M2 CONTROL PANEL ASSY

328 10020 29/06/2017 REV 3-F

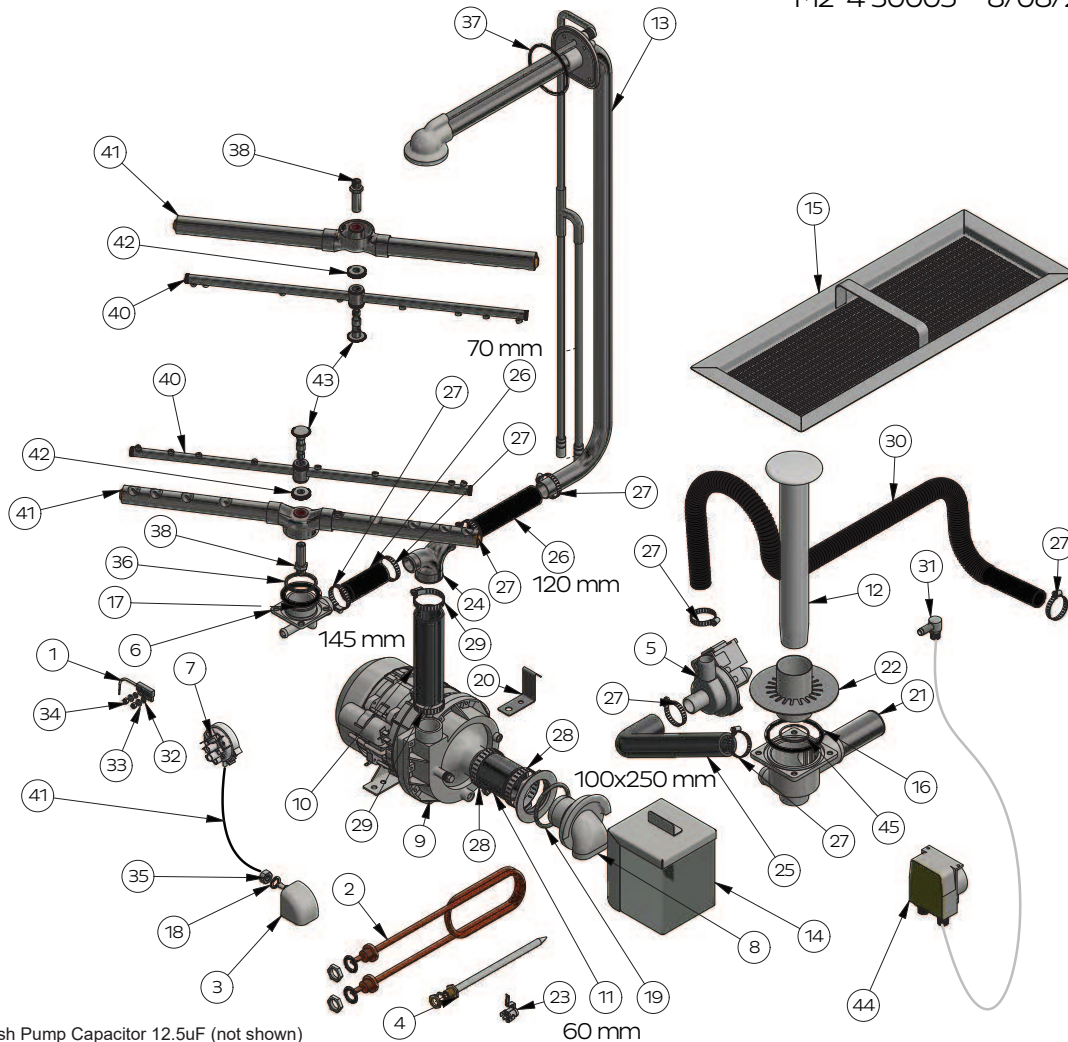
EXPLODED VIEW



Parts List			
ITEM	PART NUMBER	DESCRIPTION	QTY
1	352 20036	AL(4) TOUCH PAD CONTROL PANEL	1
2	600 80160	STUD S/S WELD STUD M3 x 16	4
3	600 80122	M3 SS HEX NYLON NUT T304	4
4	600 30474	SPACER RETAINING M3 x 8.5 MM	4
5	KIT0440069	KIT LCD BOARD WITH SPACERS	1
6	KIT0440047	KITPAD KIT	1

M2-4 WASH SYSTEM

M2-4 30005 8/08/2019 1-H

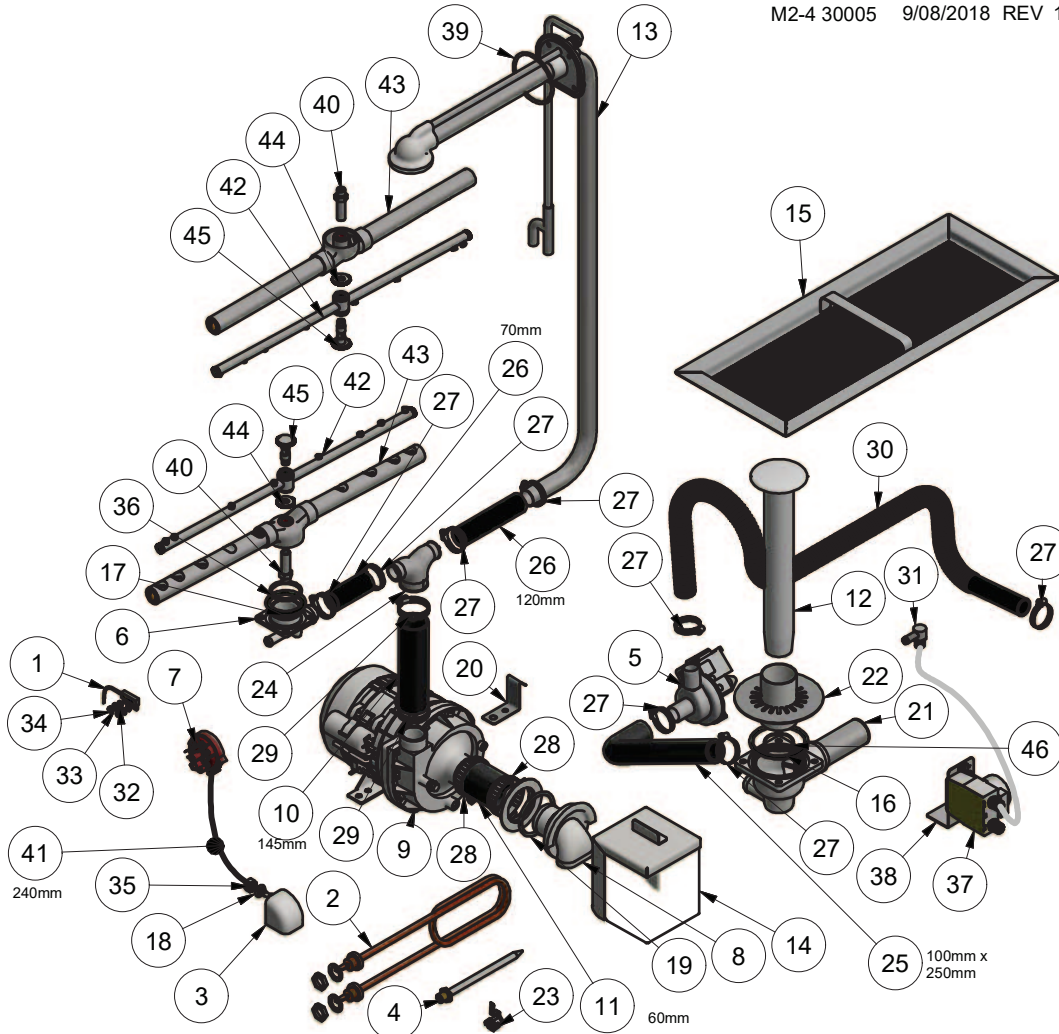


* 3892 Wash Pump Capacitor 12.5uF (not shown)

Parts List				Parts List			
ITEM	PART NUMBER	DESCRIPTION	QTY	ITEM	PART NUMBER	DESCRIPTION	QTY
1	600 30183	REED SWITCH STEM	1	24	400 90069	38mm x 25mm REDUCER TEE	1
2	600 30159	ELEMENT 2500W STRAIGHT	1	25	328 10037	HOSE M2-4/C DRAIN PUMP INLET	1
3	400 90135	PRESSURE BELL CASTING	1	26	6196	HOSE 25mm 2 PLY RADIATOR	120/70 mm
4	400 10065	ASSY THERM PROBE POCKET	1	27	ASS16	HOSE CLAMP ASS16	8
5	600 60102	DRAIN PUMP	1	28	ASS28	HOSE CLAMP ASS28	2
6	400 90078	GM/GL WASH TEE	1	29	ASS24	HOSE CLAMP ASS24	2
7	600 30479	PRESSURE SWITCH 140/60MM	1	30	600 60105	HOSE DRAIN 2.5M	1
8	400 90114	M2 WASH PUMP INLET	1	31	600 30170	DETERGENT BULK-HEAD FITTING	1
9	600 30299	WASH PUMP 1HP	1	32	600 80081	FLAT SS T304 M4 WASHER	2
10	6195	HOSE 38mm 2 PLY RADIATOR	145mm	33	8567	WASHER SPRING SS 304 M5	2
11	6194	HOSE 44mm 2 PLY RADIATOR	60mm	34	8112	SS HEX NUT M4	2
12	400 10145	UPSTAND 305mm LETTER M	1	35	600 80009	M10 SS HX NUT	1
13	303 10003	XP-4/M2-48C WASH/RINSE MANIFOLD ASSEMBLY	1	36	400 30190	BLACK ACETAL SLIP RING	1
14	328 12018	WASH PUMP FILTER ASSY M2-4	1	37	ARP235	O-RING ARP235	1
15	328 10003	M2 SCRAP TRAY ASSEMBLY	1	38	400 30072	M2 WASH SPINDLE	2
16	ARP336	O-RING ARP336	1	39	3067	P SW HOSE 4mm VACUUM	240mm
17	ARP328	O-RING 47.35IDx54OD	1	40	400 10239	RINSE ARM 490mm ASSEMBLY w Bush	2
18	ARP205	O-RING 11IDx18OD	1	41	326 10030	ASSY M2/ME/UD SS WASH ARM ASSY	2
19	ARP331	O-RING 47.35IDx54OD	1	42	400 30397	NUT WASH SPINDLE 6mm	2
20	326 20071	M2(3) WASH PUMP BRACKET	1	43	400 30398	RINSE SPINDLE SHORT V2	2
21	328 12016	M2(4) DRAIN CASTING ASSEMBLY	1	44	600 30094	DETERGENT PUMP	1
22	328 10032	M2-4 DRAIN FILTER ASSEMBLY	1	45	ARP38x2	O-RING ARP38x2 N70	1
23	600 30088	T/STAT TY60/R-110C & BRACKET	1				

M2-4 WASH SYSTEM

M2-4 30005 9/08/2018 REV 1-F

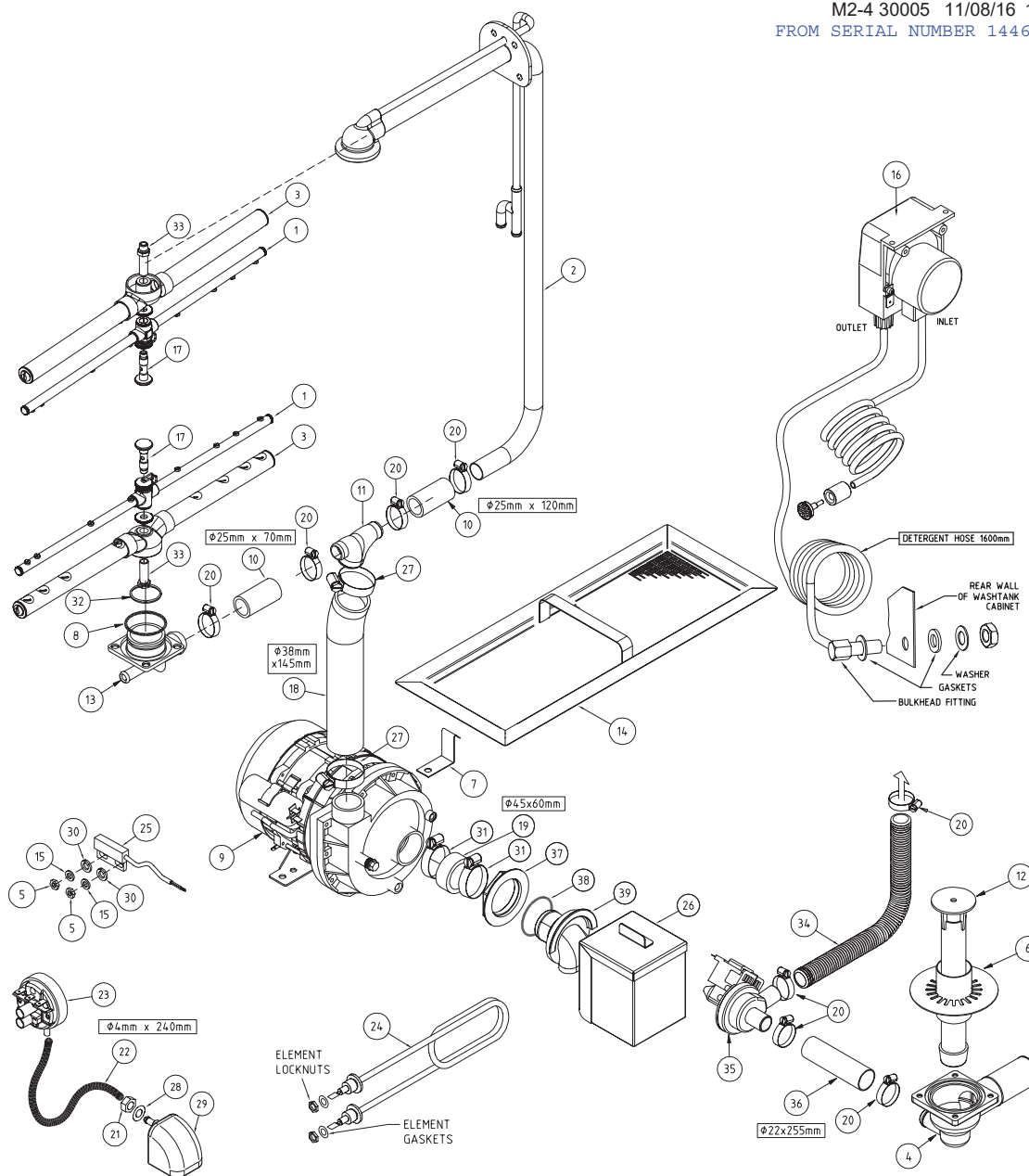


* 3892 Wash Pump Capacitor 12.5uF (not shown)

Parts List				Parts List			
ITEM	PART NUMBER	DESCRIPTION	QTY	ITEM	PART NUMBER	DESCRIPTION	QTY
1	600 30183	REED SWITCH STEM	1	24	400 90069	38mm x 25mm REDUCER TEE	1
2	600 30159	ELEMENT 2500W STRAIGHT	1	25	328 10037	HOSE M2-4/C DRAIN PUMP INLET	1
3	400 90135	PRESSURE BELL CASTING	1	26	6196	HOSE 25mm 2 PLY RADIATOR	190mm
4	400 10065	ASSY THERM PROBE POCKET	1	27	ASS16	HOSE CLAMP ASS16	8
5	600 60102	DRAIN PUMP	1	28	ASS28	HOSE CLAMP ASS28	2
6	400 90078	GM/GL WASH TEE	1	29	ASS24	HOSE CLAMP ASS24	2
7	600 30479	PRESSURE SWITCH 140/60MM	1	30	600 60105	HOSE DRAIN 2.5M	1
8	400 90114	M2 WASH PUMP INLET	1	31	600 30170	DETERGENT BULKHEAD FITTING	1
9	600 30299	WASH PUMP 1HP	1	32	600 80081	FLAT SS T304 M4 WASHER	2
10	6195	HOSE 38mm 2 PLY RADIATOR	145mm	33	8567	WASHER SPRING SS 304 M5	2
11	6194	HOSE 44mm 2 PLY RADIATOR	60mm	34	8112	SS HEX NUT M4	2
12	400 10145	UPSTAND 305mm LETTER M	1	35	600 80009	M10 SS HX NUT	1
13	329 10015	XP WASH MANIFOLD ASSEMBLY	1	36	400 30190	BLACK ACETAL SLIP RING	1
14	328 12018	WASH PUMP FILTER ASSY M2-4	1	37	600 30094	DETERGENT PUMP KIT	2
15	328 10003	M2 SCRAP TRAY ASSEMBLY	1	38	400 20182	PERISTALTIC PUMPS BRACKET	1
16	ARP336	O-RING ARP336	1	39	ARP235	O-RING ARP235	1
17	ARP328	O-RING 47.35IDx54OD	1	40	400 30072	M2 WASH SPINDLE	2
18	ARP205	O-RING 11IDx18OD	1	41	3067	P SW HOSE 4mm VACUUM	240mm
19	ARP331	O-RING 47.35IDx54OD	1	42	400 10239	RINSE ARM 490mm ASSEMBLY w Bush	2
20	326 20071	M2(3) WASH PUMP BRACKET	1	43	326 10030	ASSY M2/ME/UD SS WASH ARM ASSY	2
21	328 12016	M2(4) DRAIN CASTING ASSEMBLY	1	44	400 30074	NUT M2 WASH SPINDLE	2
22	328 10032	M2-4 DRAIN FILTER ASSEMBLY	1	45	400 30339	RINSE SPINDLE SHORT	2
23	600 30088	T/STAT TY60/R-110C & BRACKET	1	46	ARP38x2	O-RING ARP38x2 N70	1

M2-4 WASH SYSTEM

M2-4 30005 11/08/16 1E
FROM SERIAL NUMBER 144691



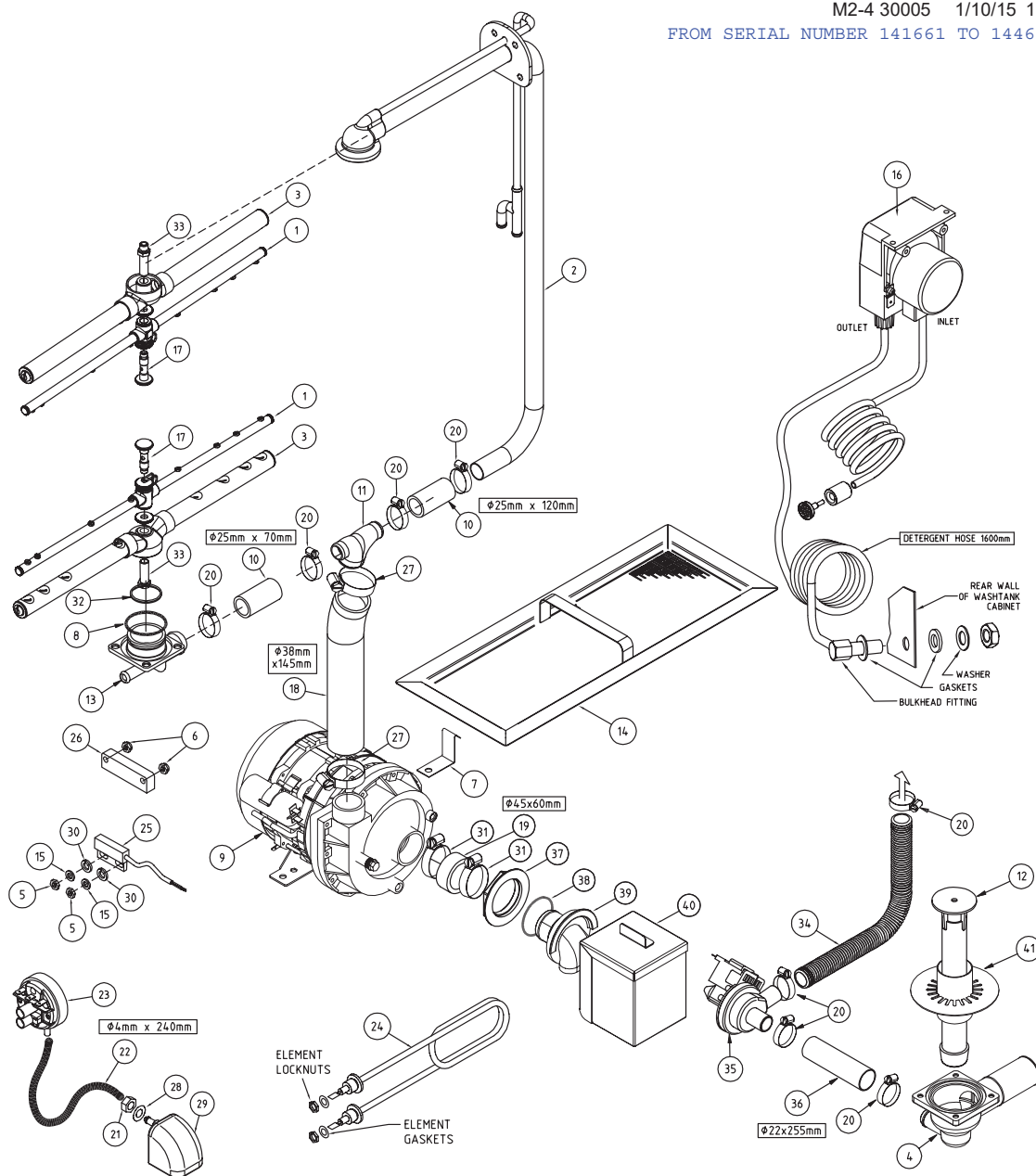
ITEM	CODE	DESCRIPTION	QTY
1	400 10239	RINSE ARM 490MM ASSEMBLY W BUSH	2
2	329 10015	XP WASH MANIFOLD ASSEMBLY	1
3	326 10030	ASSY M2/ME/UD SS WASH ARM ASSY	2
4	328 12016	M2(4) DRAIN CASTING ASSEMBLY	1
5	8112	NUT HEX SS 304 M4	2
6	328 10032	M2-4 DRAIN FILTER ASSEMBLY	1
7	326 20071	M2(3) WASH PUMP BRACKET	1
8	ARP328	O-RING	1
9	600 30299	PUMP WASH 1HP ZF 320V SX	1
10	6196	HOSE 25mm 2 PLY RADIATOR	190mm
11	400 90069	TEE 25/38MM REDUCER	1
12	400 10145	UPSTAND 305MM LETTER M	1
13	400 90078	GM/GL WASH TEE CASTING	1
14	328 10003	M2 SCRAP TRAY ASSY	2
15	8567	WASHER SPRING SS 304 MS	2
16	600 30094	PERI PUMP 15L/H SEKO-KIT	1
17	400 30339	RINSE SPINDLE SHORT	2
18	6195	HOSE 38mm 2 PLY RADIATOR	205mm
19	6194	HOSE 45mm 2 PLY RADIATOR	60mm
20	ASS16	HOSECLIP ASS16	7
21	600 80009	NUT SS 304 HEX M10	1

ITEM	CODE	DESCRIPTION	QTY
22	3067	HOSE PRESSURE SW VACUUM 4mm	300mm
23	600 30479	PRESSURE SWITCH 140/60MM	1
24	600 30159	ELEMENT WASH 2.5KW STRAIGHT	1
25	600 30183	REED SWITCH STEM	1
26	328 12018	M2(4) WASH PUMP FILTER ASSEMBLY	1
27	ASS24	ASS24 HOSE CLIP	2
28	ARP205	O RING 205	1
29	400 90135	SQUARE PRESSURE BELL CASTING	1
30	600 80081	M4 WASHER 304	2
31	ASS28	ASS28 HOSECLIP	2
32	400 30190	SLIP RING BLACK ACETAL	1
33	400 30072	M2 WASH SPINDLE	1
34	600 60105	DRAIN HOSE 2.5M	1
35	600 60102	DRAIN PUMP	1
36	6197	HOSE 22MM 2 PLY RADIATOR	225mm
37	400 90115	1 3/4" S/S BACKNUT	1
38	ARP331	O-RING ARP331	1
39	400 90114	M2 WASH PUMP INLET	1

* 3892 Wash Pump Capacitor 12.5uF (not shown)

M2-4 WASH SYSTEM

M2-4 30005 1/10/15 1C
FROM SERIAL NUMBER 141661 TO 144690

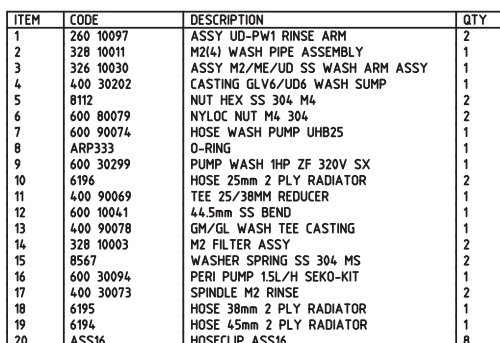


ITEM	CODE	DESCRIPTION	QTY
1	260 10097	ASSY UD-PW1 RINSE ARM	2
2	329 10015	XP WASH MANIFOLD ASSEMBLY	1
3	326 10030	ASSY M2/ME/UD SS WASH ARM ASSY	2
4	328 12016	M2(4) DRAIN CASTING ASSEMBLY	1
5	8112	NUT HEX SS 304 M4	2
6	600 80079	NYLOC NUT M4 304	2
7	326 20071	M2(3) WASH PUMP BRACKET	1
8	ARP328	O-RING	1
9	600 30299	PUMP WASH 1HP ZF 320V SX	1
10	6196	HOSE 25mm 2 PLY RADIATOR	190mm
11	400 90069	TEE 25/38MM REDUCER	1
12	400 10145	UPSTAND 305MM LETTER M	1
13	400 90078	GM/GL WASH TEE CASTING	1
14	328 10003	M2 SCRAP TRAY ASSY	1
15	8567	WASHER SPRING SS 304 MS	2
16	600 30094	PERI PUMP 15L/H SEKO-KIT	1
17	400 30073	SPINDLE M2 RINSE	2
18	6195	HOSE 38mm 2 PLY RADIATOR	205mm
19	6194	HOSE 45mm 2 PLY RADIATOR	60mm
20	ASS16	HOSECLIP ASS16	7
21	600 80009	NUT SS 304 HEX M10	1

ITEM	CODE	DESCRIPTION	QTY
22	3067	HOSE PRESSURE SW VACUUM 4mm	300mm
23	600 30479	PRESSURE SWITCH 140/60MM	1
24	600 30159	ELEMENT WASH 2.5KW STRAIGHT	1
25	600 30183	REED SWITCH STEM	1
26	600 30182	MAGNETIC UNIT	1
27	ASS24	ASS24 HOSE CLIP	2
28	ARP205	O RING 205	1
29	400 90135	SQUARE PRESSURE BELL CASTING	1
30	600 80081	M4 WASHER 304	2
31	ASS28	ASS28 HOSECLIP	2
32	400 30190	SLIP RING BLACK ACETAL	1
33	400 30072	M2 WASH SPINDLE	1
34	600 60105	DRAIN HOSE 2.5M	1
35	600 60102	DRAIN PUMP	1
36	6197	HOSE 22MM 2 PLY RADIATOR	225mm
37	400 90115	1 3/4" S/S BACKNUT	1
38	ARP331	O-RING ARP331	1
39	400 90114	M2 WASH PUMP INLET	1
40	328 12018	M2(4) WASH PUMP FILTER ASSEMBLY	1
41	328 10032	M2-4 DRAIN FILTER ASSEMBLY	1

* 3892 Wash Pump Capacitor 12.5uF (not shown)

M2-4 30001 25-07-14 3F
UP TO SERIAL NUMBER 141660



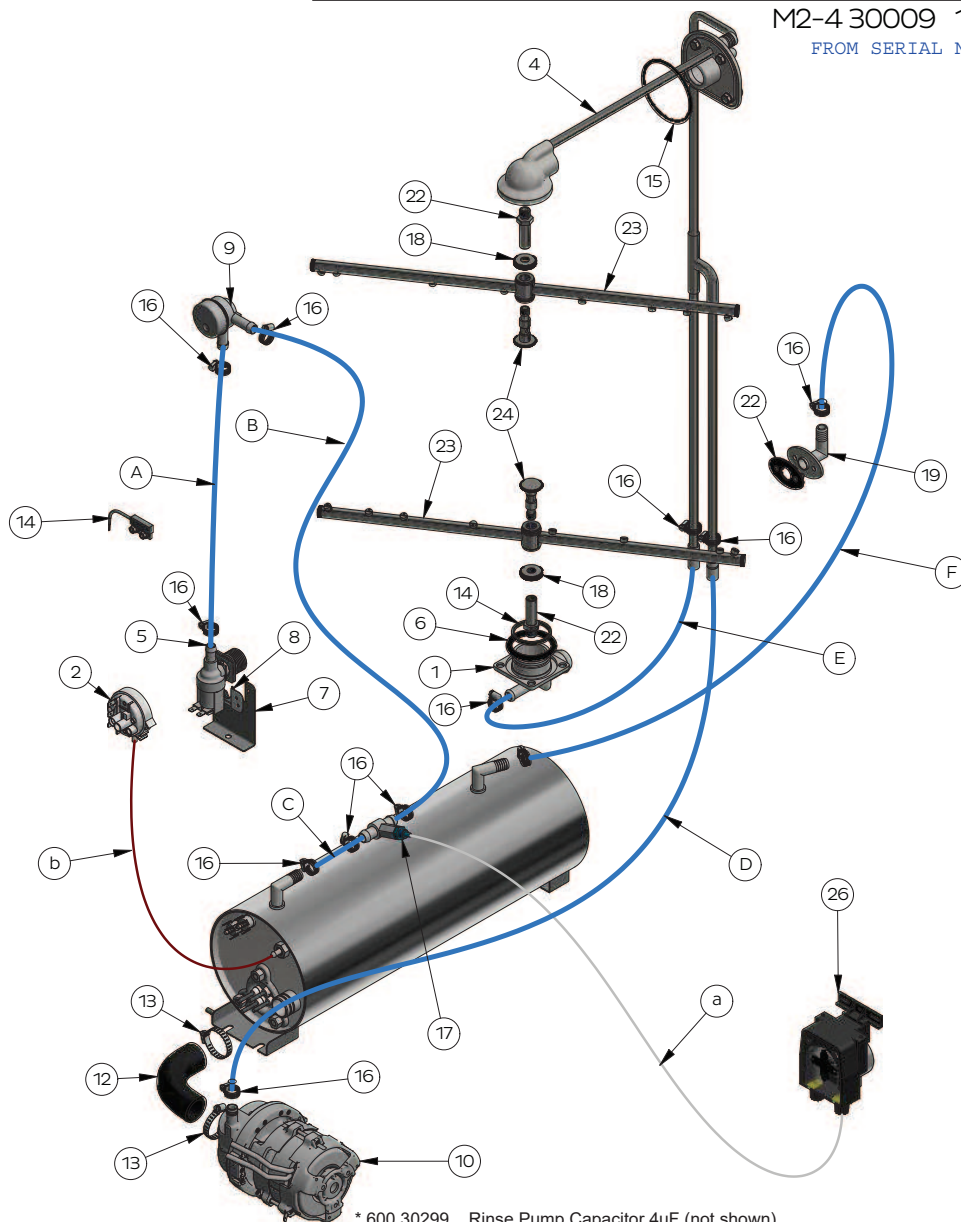
ITEM	CODE	DESCRIPTION	QTY
21	600 80009	NUt SS 304 HEX M10	1
22	3067	HOSE PRESSURE SW VACUUM 4mm	1
23	600 30479	PRESSURE SWITCH 140/60MM	1
24	600 30159	ELEMENT WASH 25KW STRAIGHT	1
25	600 30183	REED SWITCH STEM	1
26	600 30182	MAGNETIC UNIT	1
27	ASS24	ASS24 HOSE CLIP	2
28	ARP205	O RING 205	1
29	400 90135	SQUARE PRESSURE BELL CASTING	1
30	600 80081	M4 WASHER 304	2
31	ASS28	ASS28 HOSECLIP	4
32	400 30190	SLIP RING BLACK ACETAL	1
33	400 30072	M2 WASH SPINDLE	1
34	600 60105	DRAIN HOSE 2.5M	1
35	600 60102	DRAIN PUMP	1
36	328 10016	M2 UPSTAND ASSY	1

©Washtech Ltd, January 2021

M2-4 WASHTECH RINSE SYSTEM

M2-4 30009 12/08/2019 1-B

FROM SERIAL NUMBER 161551

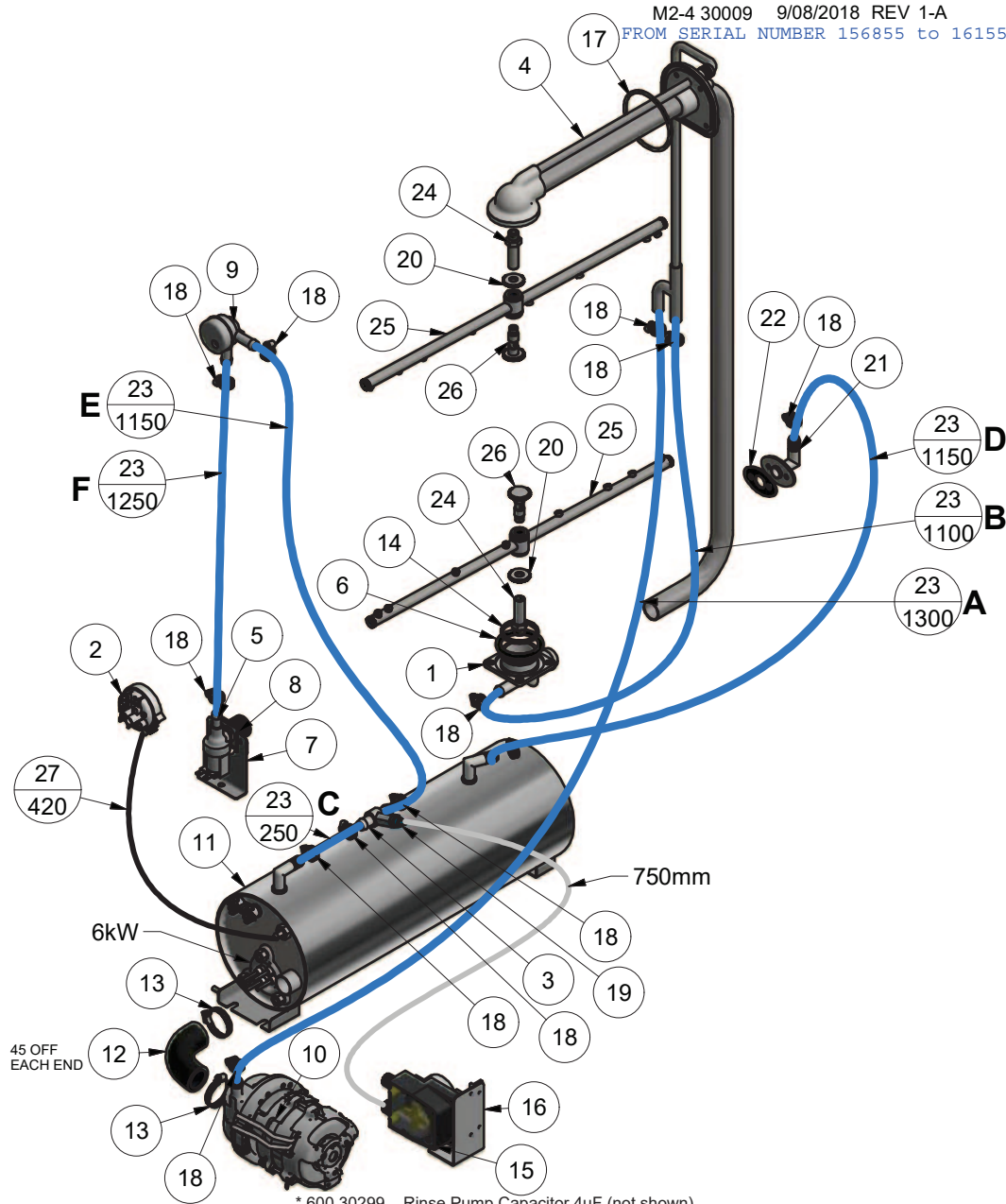


* 600 30299 Rinse Pump Capacitor 4uF (not shown)

Parts List				Parts List			
ITEM	PART NUMBER	DESCRIPTION	QTY	ITEM	PART NUMBER	DESCRIPTION	QTY
1	400 90078	GM/GL WASH TEE	1	18	400 30397	NUT WASH SPINDLE 6mm	2
2	600 30478	PRESSURE SWITCH 50/20MM	1	19	328 10022	M2 OVERFLOW TUBE ASSY	1
3	280 30003	TEE BRACON RINSE AID	1	20	400 90096	RINSE DISTRIBUTION GASKET	1
4	303 10003	XP-4/M2-48C WASH/RINSE MANIFOLD ASSEMBLY	1	21	600 60073	HOSE HOTOTAL 19 x 11mm	6.5m
5	3342	SOLENOID VALVE 1 WAY	1	22	400 30072	M2 WASH SPINDLE	2
6	ARP328	O-RING 47.35IDx54OD	1	23	400 10239	RINSE ARM 490mm ASSEMBLY w Bush	2
7	400 20038	BKT SOLENOID/DET.PUMP MOUNTING	1	24	400 30398	RINSE SPINDLE SHORT V2	2
8	1247	INLET SOLENOID SUPPORT	1	25	3067	P SW HOSE 4mm VACUUM	420mm
9	600 60053	VACUUM BREAKER 1/2" ASSY	1	26	600 30480	ADJUSTABLE RINSE AID PUMP	1
10	600 30508	RINSE PUMP 0.18KW	1	A	600 60073	HOSE HOTOTAL 19 x 11 mm	1250 mm
11	400 10354	RINSE TANK 150MM SS 6KW ASSY	1	B	600 60073	HOSE HOTOTAL 19 x 11 mm	1150 mm
12	600 90074	UHB25 HOSE BEND (CUT 45mm OFF EACH END)	1	C	600 60073	HOSE HOTOTAL 19 x 11 mm	250 mm
13	ASS16	HOSE CLAMP ASS16	10	D	600 60073	HOSE HOTOTAL 19 x 11 mm	1300 mm
14	400 30190	BLACK ACETAL SLIP RING	1	E	600 60073	HOSE HOTOTAL 19 x 11 mm	1100 mm
15	ARP235	O-RING ARP235	1	F	600 60073	HOSE HOTOTAL 19 x 11 mm	1150 mm
16	ASS05	HOSE CLAMP	12	a		RINSE AID TUBE	750 mm
17	600 30487	NON RETURN VALVE	1	b	3067	PRESSURE SWITCH HOSE 4mm VACUUM	420 mm

WASHTECH M2(4) RINSE SYSTEM

M2-4 30009 9/08/2018 REV 1-A
FROM SERIAL NUMBER 156855 to 161550

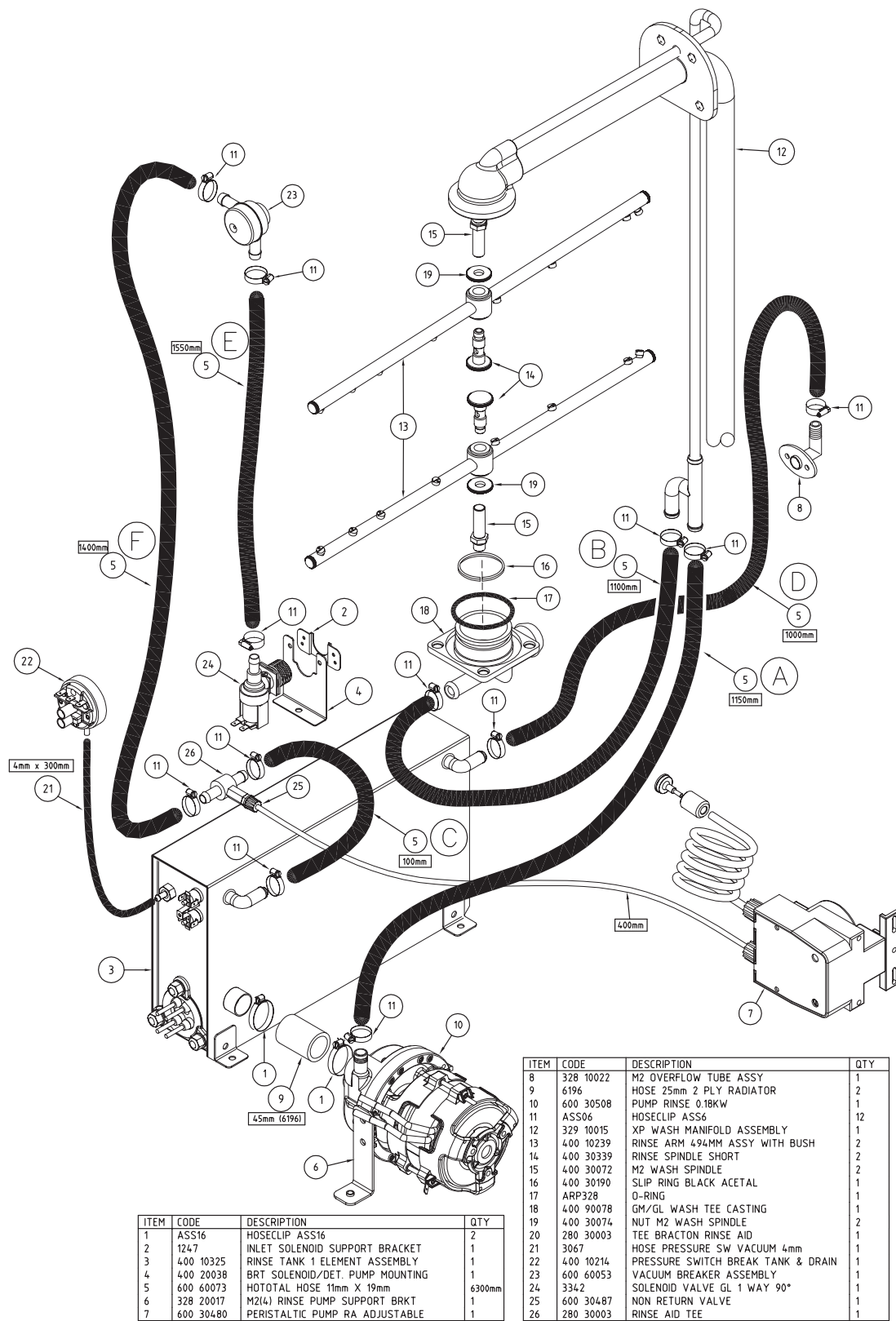


* 600 30299 Rinse Pump Capacitor 4uF (not shown)

Parts List				Parts List			
ITEM	PART NUMBER	DESCRIPTION	QTY	ITEM	PART NUMBER	DESCRIPTION	QTY
1	400 90078	GM/GL WASH TEE	1	15	600 30480	PERISTALTIC PUMP RA ADJUSTABLE	1
2	600 30478	PRESSURE SWITCH 50/20MM	1	16	400 20182	PERISTALTIC PUMPS BRACKET	1
3	280 30003	TEE BRACKTON RINSE AID	1	17	ARP235	O-RING ARP235	1
4	329 10015	XP WASH MANIFOLD ASSEMBLY	1	18	ASS05	HOSE CLAMP	12
5	3342	SOLENOID VALVE 1 WAY	1	19	600 30487	NON RETURN VALVE	1
6	ARP328	O-RING 47.35IDx54OD	1	20	400 30074	NUT M2 WASH SPINDLE	2
7	400 20038	BKT SOLENOID/DET.PUMP MOUNTING	1	21	328 10022	M2 OVERFLOW TUBE ASSY	1
8	1247	INLET SOLENOID SUPPORT	1	22	400 90096	RINSE DISTRIBUTION GASKET	1
9	600 60053	VACUUM BREAKER 1/2" ASSY	1	23	600 60073	HOSE HOTOTAL 19 x 11mm	6.5m
10	600 30508	RINSE PUMP 0.18KW	1	24	400 30072	M2 WASH SPINDLE	2
11	400 10354	RINSE TANK 150MM SS 6KW ASSY	1	25	400 10239	RINSE ARM 490mm ASSEMBLY w Bush	2
12	600 90074	UHB25 HOSE BEND	1	26	400 30339	RINSE SPINDLE SHORT	2
13	ASS16	HOSE CLAMP ASS16	10	27	3067	P SW HOSE 4mm VACUUM	420mm
14	400 30190	BLACK ACETAL SLIP RING	1				

WASHTECH M2(4) RINSE SYSTEM

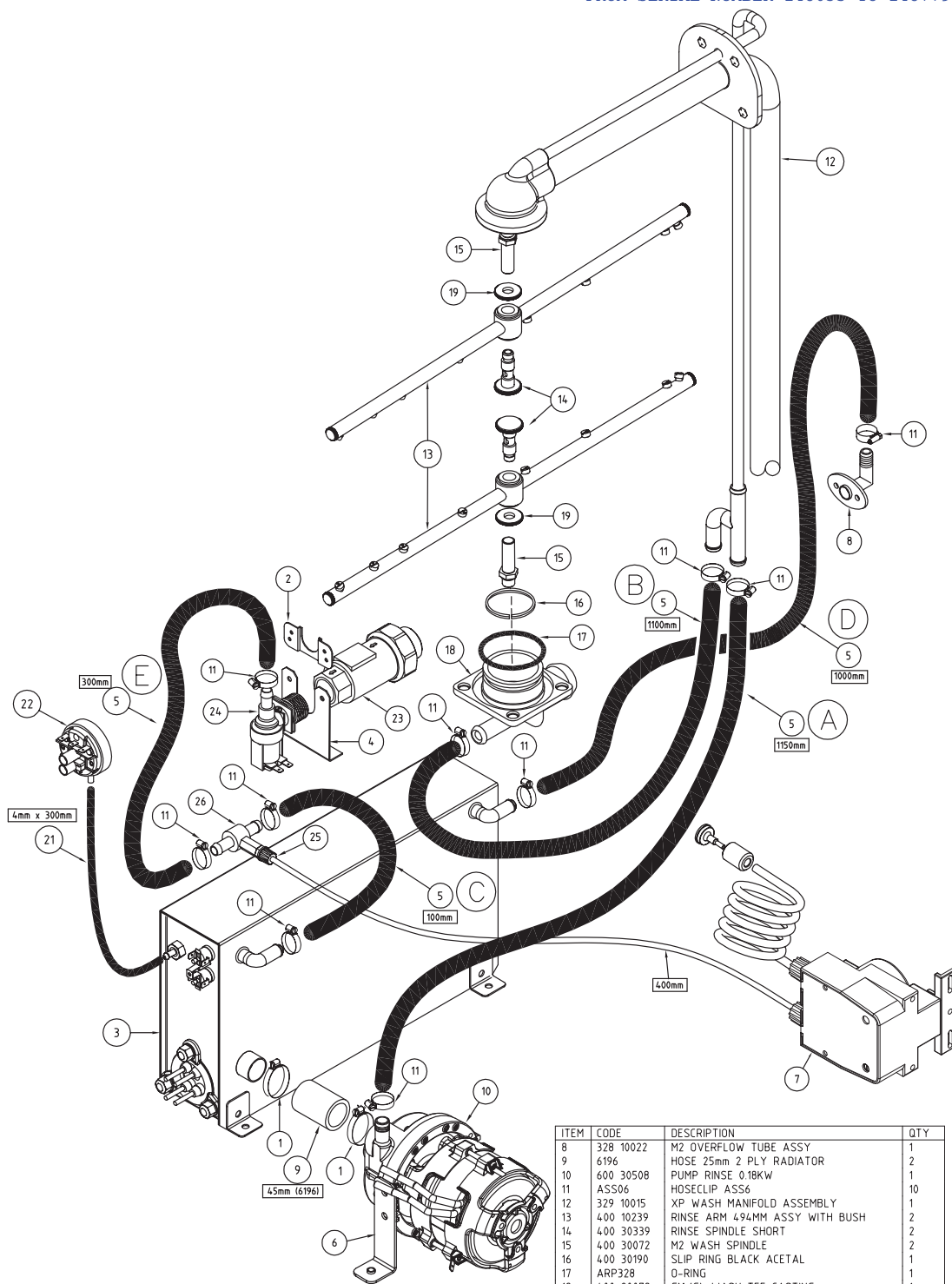
M2(4) 30002 26/04/17 3U
FROM SERIAL NUMBER 148780 to 156850



* 600 30299 Rinse Pump Capacitor 4uF (not shown)

WASHTECH M2(4) RINSE SYSTEM

M2(4) 30002 23/11/16 3T
FROM SERIAL NUMBER 148035 TO 148779



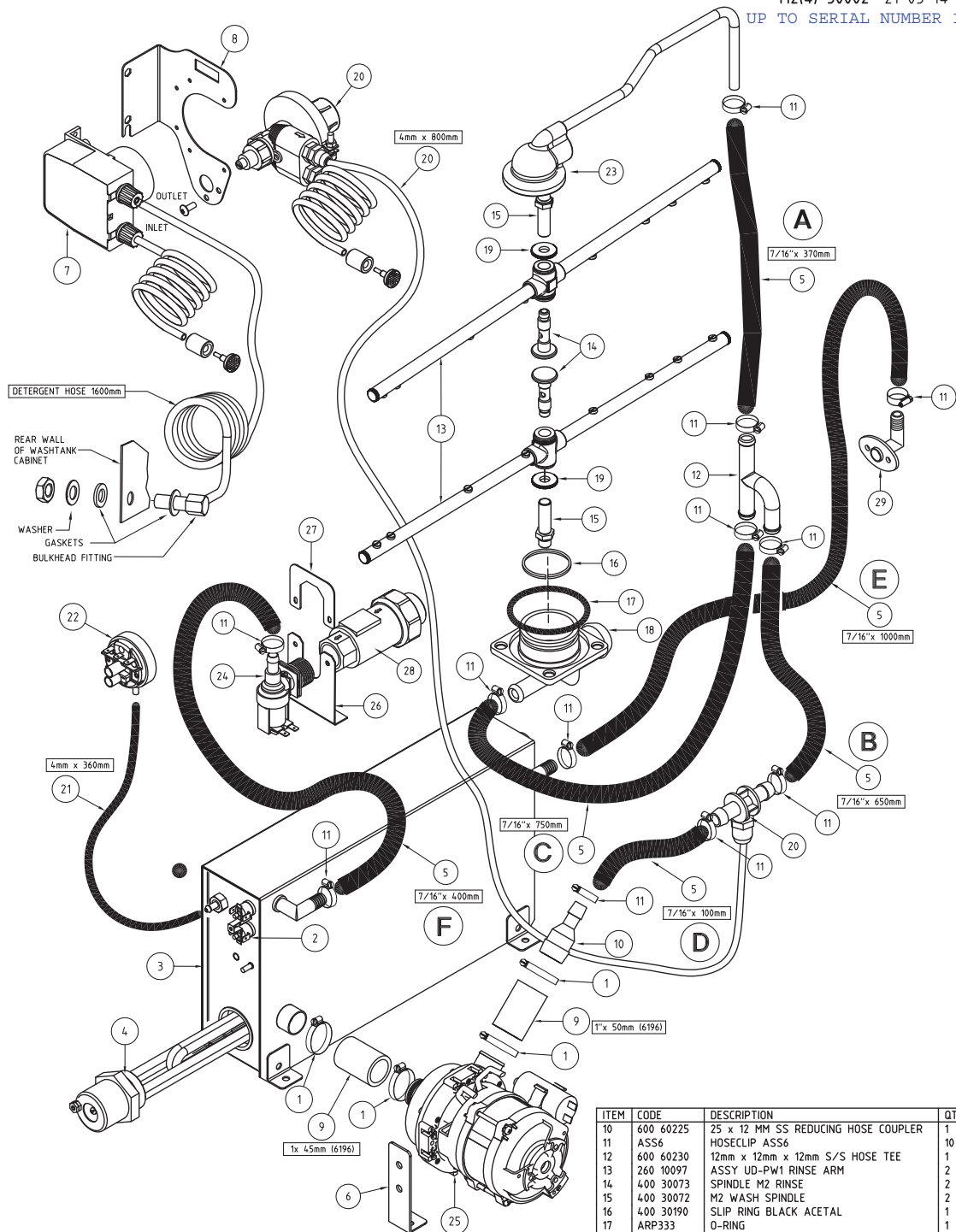
ITEM	CODE	DESCRIPTION	QTY
1	ASS16	HOSECLIP ASS16	2
2	1247	INLET SOLENOID SUPPORT BRACKET	1
3	400 10325	RINSE TANK 1 ELEMENT ASSEMBLY	1
4	400 20038	BRT SOLENOID/DET. PUMP MOUNTING	1
5	600 60073	HOTOTAL HOSE 11mm X 19mm	2840mm
6	328 20017	M2(4) RINSE PUMP SUPPORT BRKT	1
7	600 30480	PERISTALTIC PUMP RA ADJUSTABLE	1

ITEM	CODE	DESCRIPTION	QTY
8	328 10022	M2 OVERFLOW TUBE ASSY	1
9	6196	HOSE 25mm 2 PLY RADIATOR	2
10	600 30508	PUMP RINSE 0.18KW	1
11	ASS06	HOSECLIP ASS06	10
12	329 10015	XP WASH MANIFOLD ASSEMBLY	1
13	400 10239	RINSE ARM 494MM ASSY WITH BUSH	2
14	400 30339	RINSE SPINDLE SHORT	2
15	400 30072	M2 WASH SPINDLE	2
16	400 30190	SLIP RING BLACK ACETAL	1
17	ARP328	O-RING	1
18	400 90078	GM/GL WASH TEE CASTING	1
19	400 30074	NUT M2 WASH SPINDLE	2
20	280 30003	TEE BRACKTON RINSE AID	1
21	3067	HOSE PRESSURE SW VACUUM 4mm	1
22	400 10214	PRESSURE SWITCH BREAK TANK & DRAIN	1
23	400 10132	DUAL CHECK VALVE ASSY	1
24	3342	SOLENOID VALVE GL 1 WAY 90°	1
25	600 30487	NON RETURN VALVE	1
26	280 30003	RINSE AID TEE	1

* 600 30299 Rinse Pump Capacitor 4uF (not shown)

WASHTECH M2(4) RINSE SYSTEM

M2(4) 30002 21-03-14 3M
UP TO SERIAL NUMBER 148034

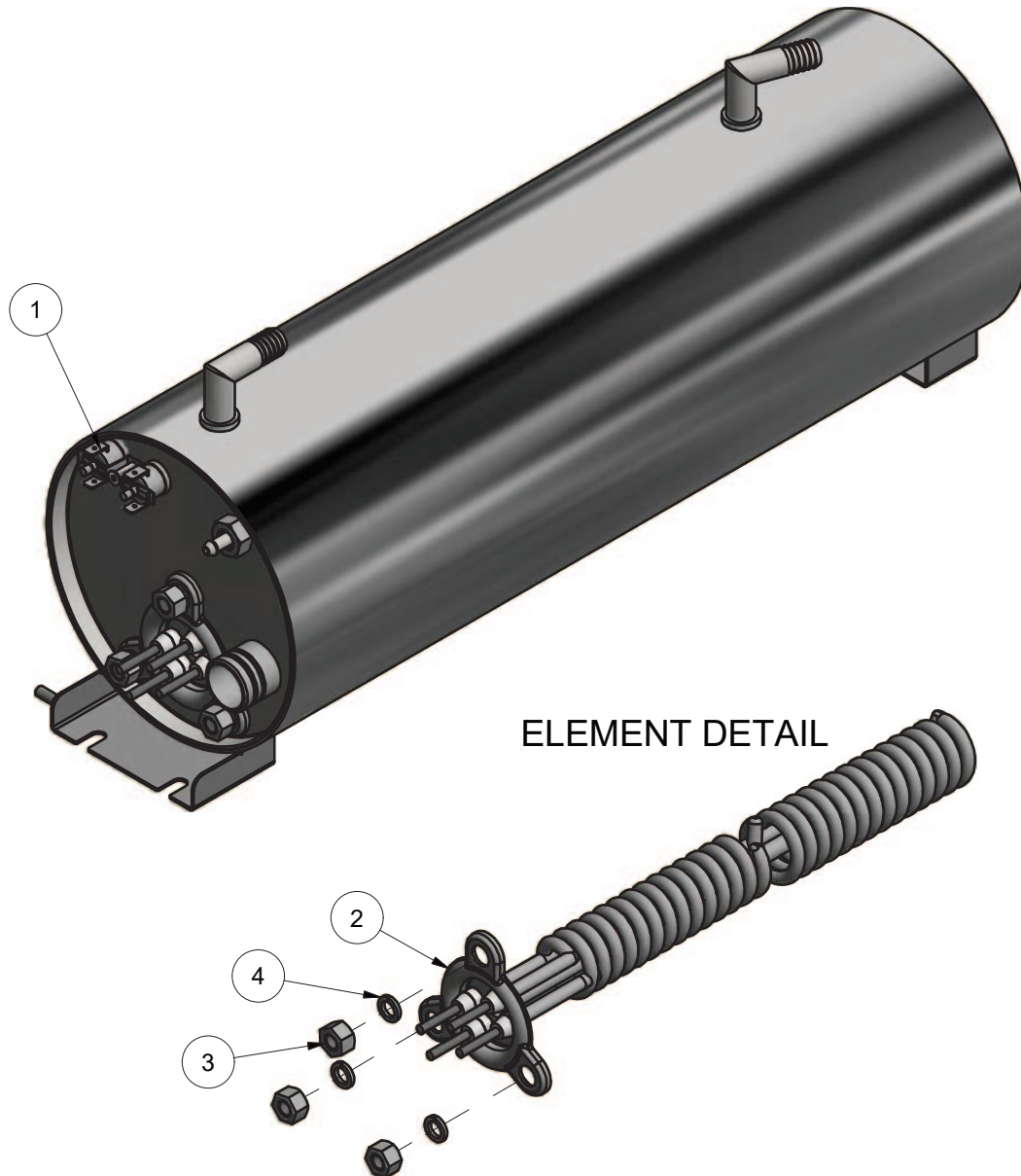


ITEM	CODE	DESCRIPTION	QTY
1	ASS16	HOSECLIP ASS16	2
2	600 30088	TSTAT TY60/R-110C (WITH E BKT)	2
3	400 10325	GL/UL/M2(4) RINSE TANK SUB-ASSEMBLY	1
4	3007	ELEMENT 6kW RINSE	1
5	600 60073	HOTOTAL HOSE 11mm X 19mm	2840mm
6	328 20017	M2(4) RINSE PUMP SUPPORT BRKT	1
7	600 30094	PERI PUMP 1.5L/H SEKO-KIT	1
8	400 20051	BRACKET SEKO CHEMICAL PUMP	1
9	6196	HOSE 25mm 2 PLY RADIATOR	2

ITEM	CODE	DESCRIPTION	QTY
10	600 60225	25 x 12 MM SS REDUCING HOSE COUPLER	1
11	ASS6	HOSECLIP ASS6	10
12	600 60230	12mm x 12mm x 12mm S/S HOSE TEE	1
13	260 10097	ASSY UD-PWT RINSE ARM	2
14	400 30073	SPINDLE M2 RINSE	2
15	400 30072	M2 WASH SPINDLE	2
16	400 30190	SLIP RING BLACK ACETAL	1
17	ARP333	O-RING	1
18	400 90078	GM/GL WASH TEE CASTING	1
19	400 30074	NUT M2 WASH SPINDLE	2
20	600 30324	RINSE AID INJECTOR KIT	1
21	3067	HOSE PRESSURE SW VACUUM 4mm	1
22	400 10214	PRESSURE SWITCH BREAK TANK & DRAIN	1
23	328 10011	M2(4) WASH PIPE ASSEMBLY	1
24	3342	SOLENOID VALVE GL 1 WAY 90°	1
25	600 30508	RINSE PUMP	1
26	400 20038	BKT SOLENOID/DET.PUMP MOUNTING	1
27	400 20108	BRACKET DCV CLAMP	1
28	400 10132	DUAL CHECK VALVE ASSY	1
29	328 10022	M2 OVERFLOW TUBE ASSY	1

RINSE TANK 150MM SS 6KW ELEMENT ASSEMBLY

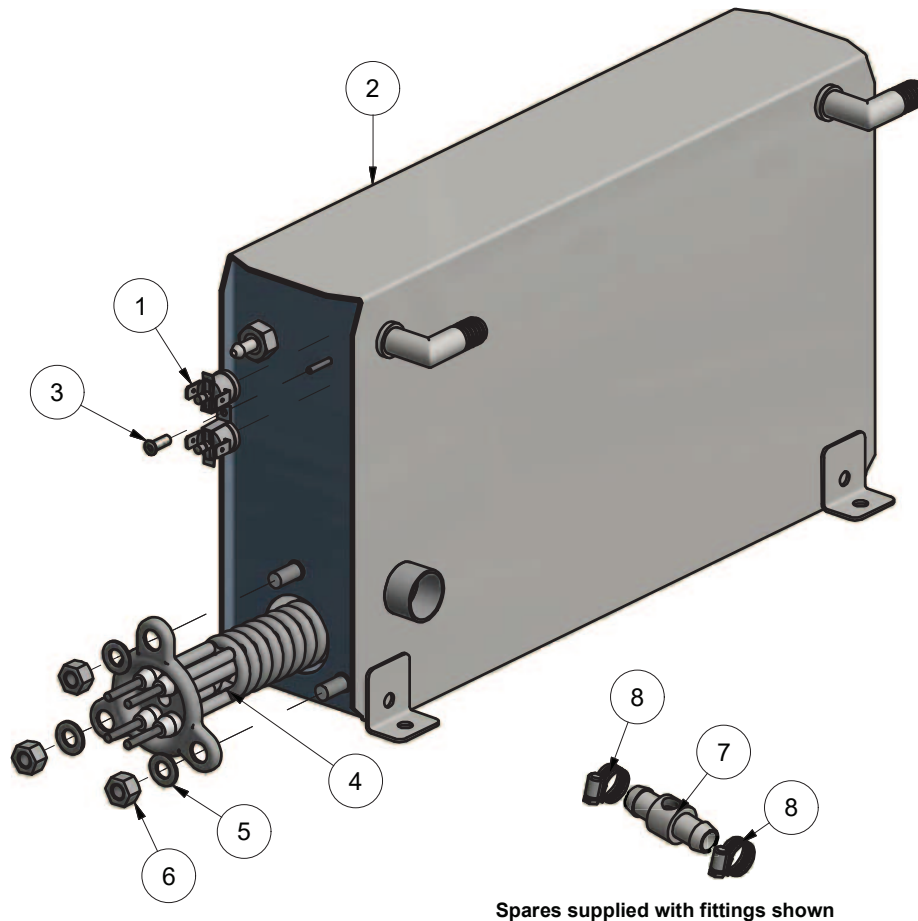
400 10354 11/06/2018 REV 1-A
FROM SERIAL NUMBER 156855



Parts List			
ITEM	PART NUMBER	DESCRIPTION	QTY
1	600 30088	TSTAT TY60/R-110C [WITH E BKT]	2
2	600 30496	ELEMENT RINSE 6kW	1
3	600 80023	NUT SS M8	3
4	8568	WASHER SPRING SS 304 M8	3

RINSE TANK 1 ELEMENT ASSEMBLY

400 10325 9/09/2016 REV 1-A
TO SERIAL NUMBER 156850



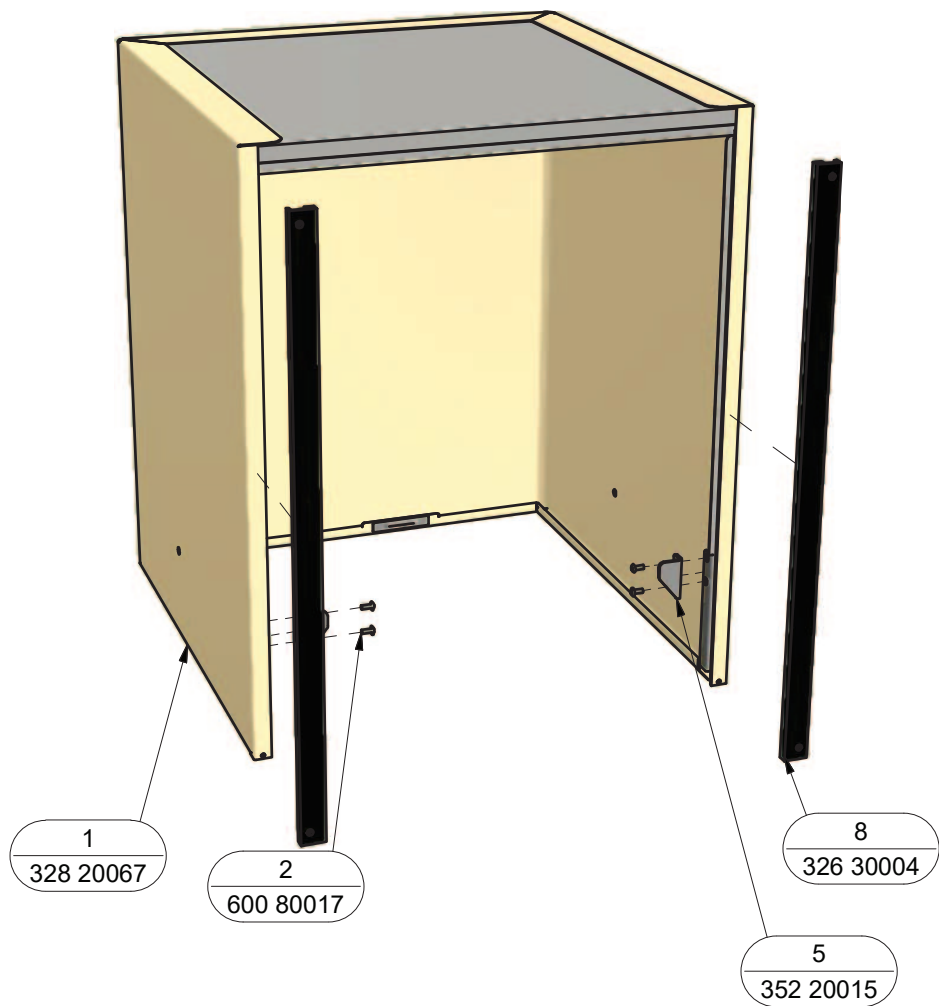
Parts List			
ITEM	PART NUMBER	DESCRIPTION	QTY
1	600 30088	TSTAT TY60/R-110C [WITH E BKT]	2
2	400 10249	RINSE TANK 1 ELEMENT WITH STUDS SUB-ASSEMBLY	1
3	600 80064	STANDOFF M3 x 12	1
4	600 30496	ELEMENT RINSE 6kW	1
5	600 80022	WASHER FL SS 304 M8x16x1.2mm	3
6	600 80063	NUT NYLOC SS M8	3
7	280 30003	TEE BRACON RINSE AID	1
8	ASS05	ASS05 HOSECLIP	2

**400 10325 RINSE TANK COMPLETE (ITEMS 1 -8)

M2(4) DOOR ASSY

328 12008 17/11/2015 REV 3-A
FROM SERIAL NUMBER 144691

EXPLODED VIEW



Parts List			
ITEM	PART NUMBER	DESCRIPTION	QTY
1	328 20067	M2(4) DOOR WRAP	1
2	600 80017	M5 x 12 SS TRUSS HEAD SCREW	4
5	352 20015	M2/AL DOOR STOP LH	1
8	326 30004	M2 DOOR SLIDE	2

**328 12008 DOOR COMPLETE

328 12007 19/05/2015 REV 3-A
UP TO SERIAL NUMBER 144690

Diagram illustrating the assembly of a cabinet door, showing the door panel (1) and the internal frame components (2, 3, 4, 5, 6) with their corresponding part numbers:

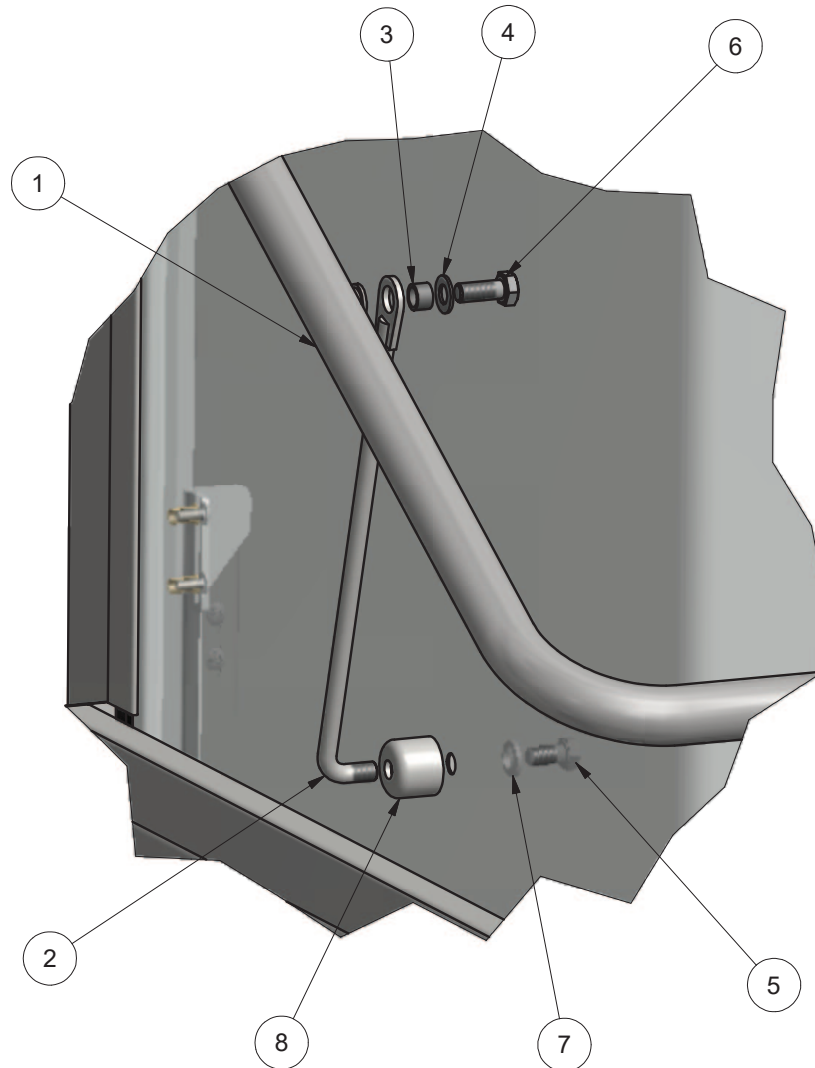
- 1: 328 20055
- 2: 600 80017
- 3: 400 20138
- 4: 600 30182
- 5: 352 20015
- 6: 326 30004

Parts List			
ITEM	PART NUMBER	DESCRIPTION	QTY
1	328 20055	M2(4) DOOR WRAP	1
2	600 80017	M5 x 12 SS TRUSS HEAD SCREW	4
3	400 20138	DOOR SWITCH MAGNT HOLDER	1
4	600 30182	MAGNET	1
5	352 20015	M2/AL DOOR STOP LH	1
6	326 30004	M2 DOOR SLIDE	2

©Washtech Ltd, January 2021

M2(4) DOOR LINK ASSEMBLY

328 12001 30/06/2015 REV 1-A

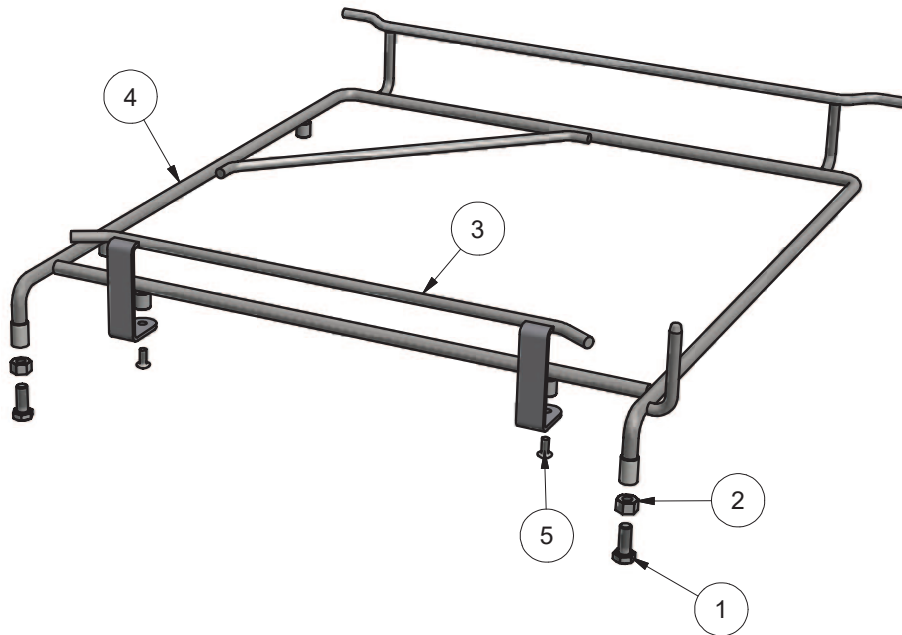


Parts List			
ITEM	PART NUMBER	DESCRIPTION	QTY
1	328 10012	M2(4) ASSY DOOR HANDLE	1
2	400 10206	PASSTHROUGH DOOR STAY ASSY	2
3	1658	SPACER	2
4	600 80022	WASHER FL SS 304 M8x16x1.2mm	2
5	600 80029	M8x12 HEX HD SET SCREW T304	2
6	600 80030	M8x20 HEX HD SET SCREW T304	2
7	600 80158	8mm TYPE A SEALING WASHER	2
8	400 30225	PASSTHROUGH DOOR STAY MOUNT	1

M2 RACKSLIDE ASSEMBLY

328 10026 28/08/2014 REV 3-A

EXPLODED VIEW

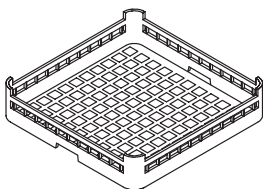


Parts List			
ITEM	PART NUMBER	DESCRIPTION	QTY
1	600 80030	M8x20mm Hex-Head Bolt	2
2	600 80063	NUT NYLOC SS M8	2
3	328 10008	M2 RACK GUIDE ROD ASSEMBLY	1
4	328 10024	M2 RACKSLIDE SUB-ASSEMBLY	1
5	600 80017	M5 x 12 SS TRUSS HEAD SCREW	2

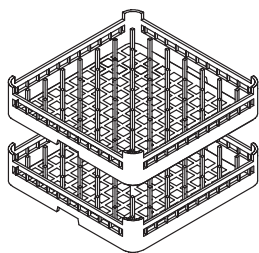
Accessories

M2(4) ACCESSORIES

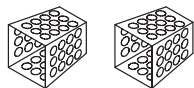
M2(4) ACS 14/01/16 1B



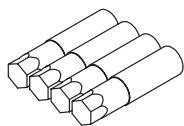
600 70029
CUPRACK 500mm OPEN



600 70028
DISHRACK 500mm 9 x 9 DIVISION



C660503
CUTLERY CONTAINER G

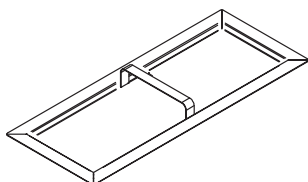


600 90154
SS LEG (63D x 225-325mm x M12)

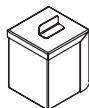


600 60080
2M S/S HOSE

OPTIONAL ACCESSORIES - NOT SUPPLIED WITH STANDARD MACHINE



328 10034
SCRAP TRAY FINE MESH



328 12019
WASH PUMP FINE MESH FILTER

Information supplied in this manual is copyright.
No part of this work may be reproduced or copied
in any form or by any means, electronic or
mechanical without the express permission of the
author/publisher

Distributed in Australia by Moffat Pty Limited



740 Springvale Road
Mulgrave 3170
Victoria
Australia

an Ali Group Company



SPARES
WEBSTORE

spares.moffat.com.au



1300 263 107



sparesinfo@moffat.com.au